

# V&V Reference Report

## L2 ASCDS Version : 8.4.3

Observation 12859 - L2 Version 2  
Chandra X-Ray Center

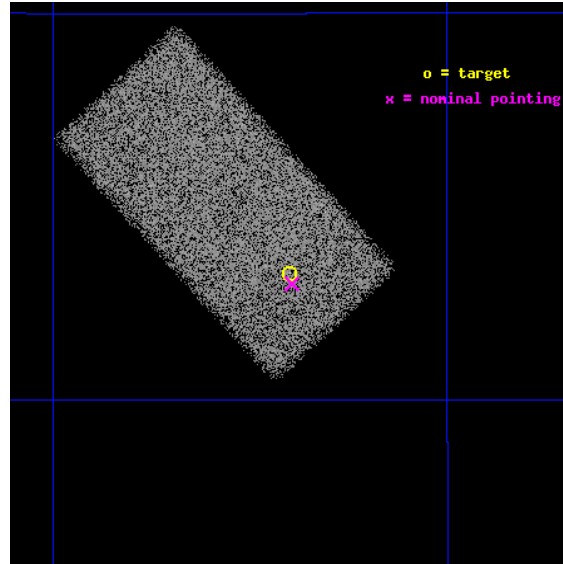
L2 Processing Date : Feb 12 2012

## Contents

<b>1</b>	<b>Front</b>	<b>2</b>
<b>2</b>	<b>OBI</b>	<b>3</b>
2.1	OBI . . . . .	3
2.1.1	Images . . . . .	3
2.1.2	Bias . . . . .	3
2.1.3	Parameters . . . . .	4
2.1.4	Events . . . . .	4
2.2	Compared Parameters . . . . .	5
2.3	Aspect . . . . .	6
2.4	Star Slots . . . . .	9
2.4.1	Slot 3 . . . . .	9
2.4.2	Slot 4 . . . . .	10
2.4.3	Slot 5 . . . . .	11
2.4.4	Slot 6 . . . . .	12
2.4.5	Slot 7 . . . . .	13
2.5	FID Slots . . . . .	14
2.5.1	Slot 0 . . . . .	14
2.5.2	Slot 1 . . . . .	15
2.5.3	Slot 2 . . . . .	16
<b>A</b>	<b>Summary</b>	<b>17</b>
A.1	Status . . . . .	17
A.2	Comments . . . . .	17

# 1 Front

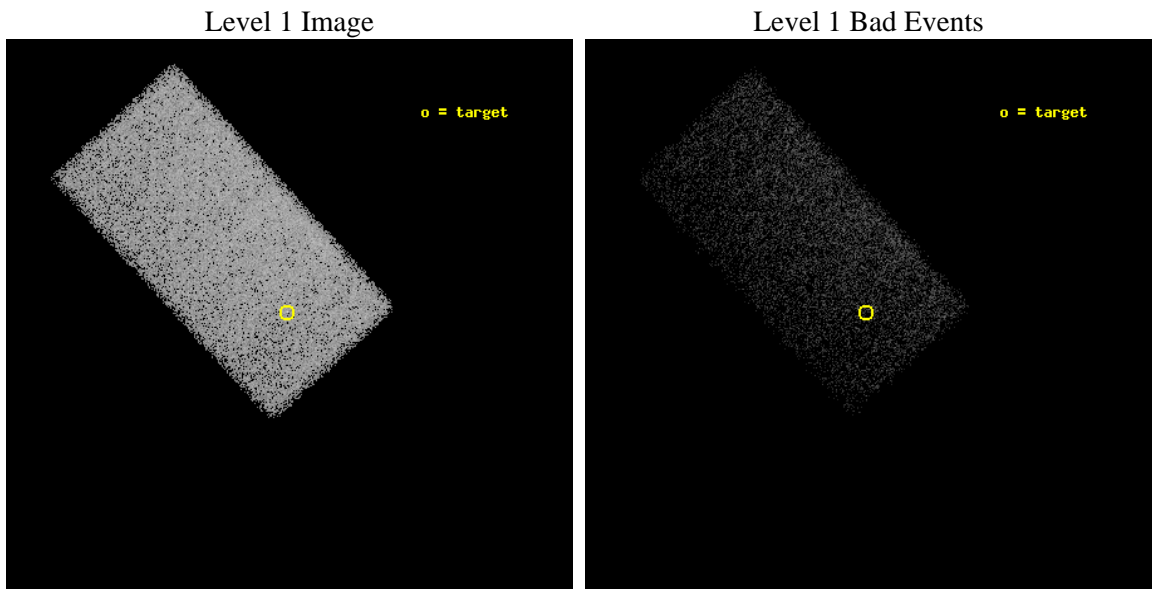
seq_num	702492	Sequence number
obs_id	12859	Observation id
title	Extreme Velocity Quasar Outflows and the Role of X-Ray Shielding	P
observer	Fred Hamann	Principal investigator
object	J142123.99+463317.88	Source name
dtcycle	0	&#160
cycle	P	events from which exps? Prim/Second/Both
ra_targ	215.35	Observer's specified target RA [deg]
dec_targ	46.554972	Observer's specified target Dec [deg]
ra_nom	215.3486580453	Nominal RA [deg]
dec_nom	46.550197702028	Nominal Dec [deg]
roll_nom	227.33632836007	Nominal Roll [deg]
revision	2	Processing version of data
ontime	24284.720783055	Sum of GTIs [s]
livetime	23637.985499781	Livetime [s]
ontime7	24284.720783055	Sum of GTIs [s]
l2events	44012	Number of level 2 events



## 2 OBI

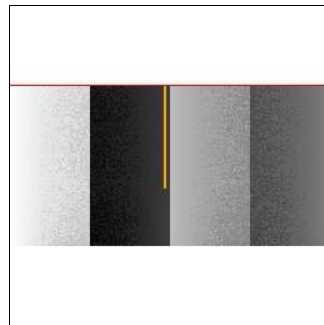
### 2.1 OBI

#### 2.1.1 Images



#### 2.1.2 Bias

Chip 7



### 2.1.3 Parameters

obi_num	0	Obi number	sched_exp_time	24236.000000	[s] Scheduled observation exposure time
ascdsver	8.4.3	Processing system revision	ontime	24284.720783055	Sum of GTIs [s]
caldbver	4.4.7	&#160	ontime7	24284.720783055	Sum of GTIs [s]
date	2012-02-12T14:05:09	Date and time of file creation	l1events	95369	Number of level 1 events
revision	2	Processing version of data			

### 2.1.4 Events

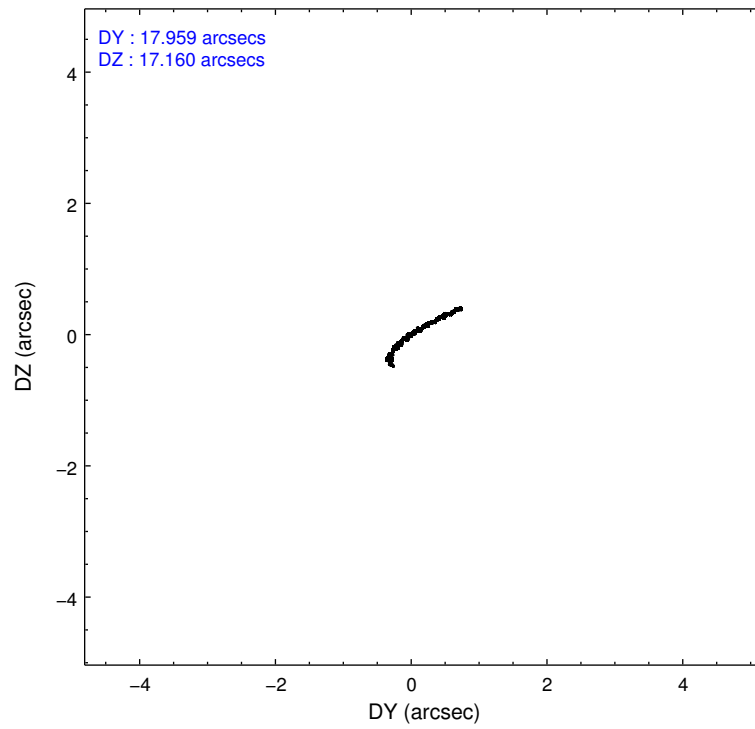
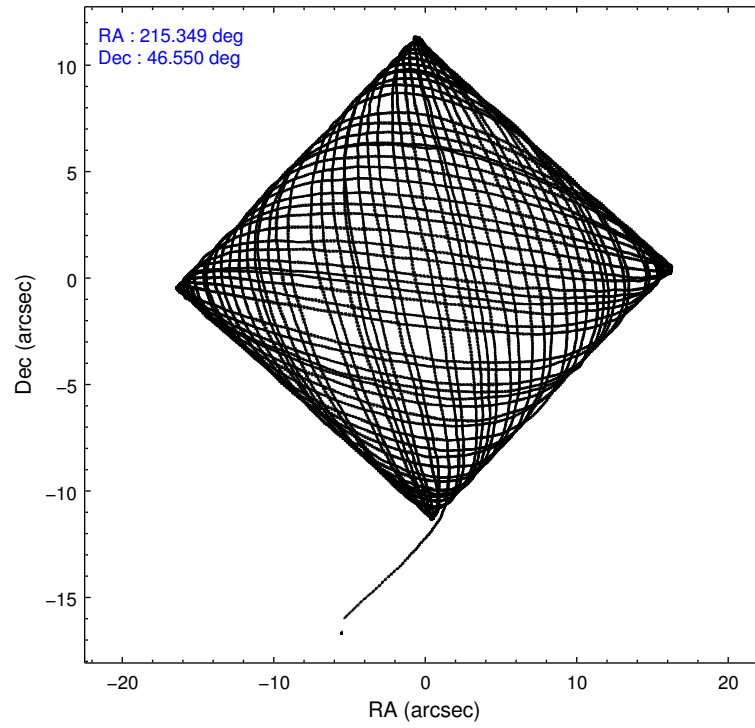
	<b>ccd 7</b>
level 1 events	95369
rejected events	50104
rejected %	52%

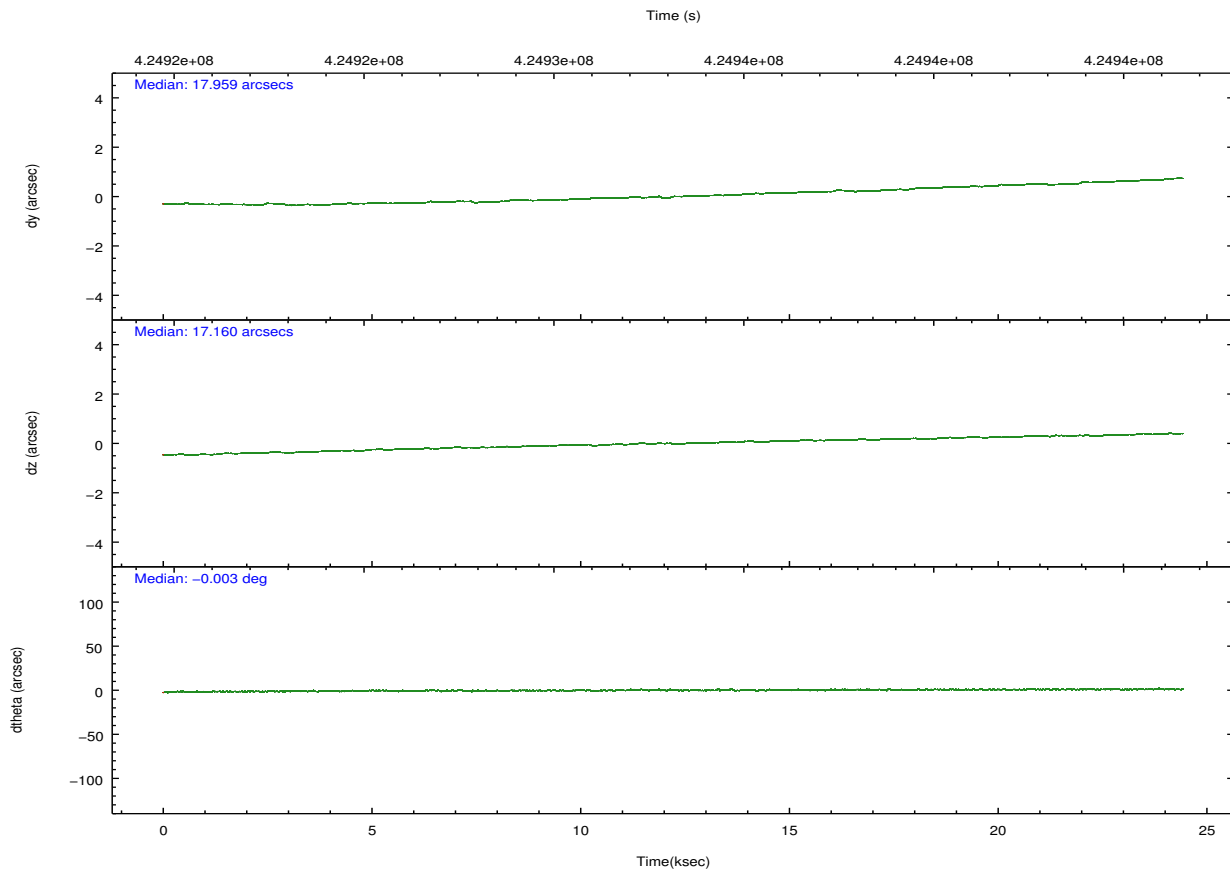
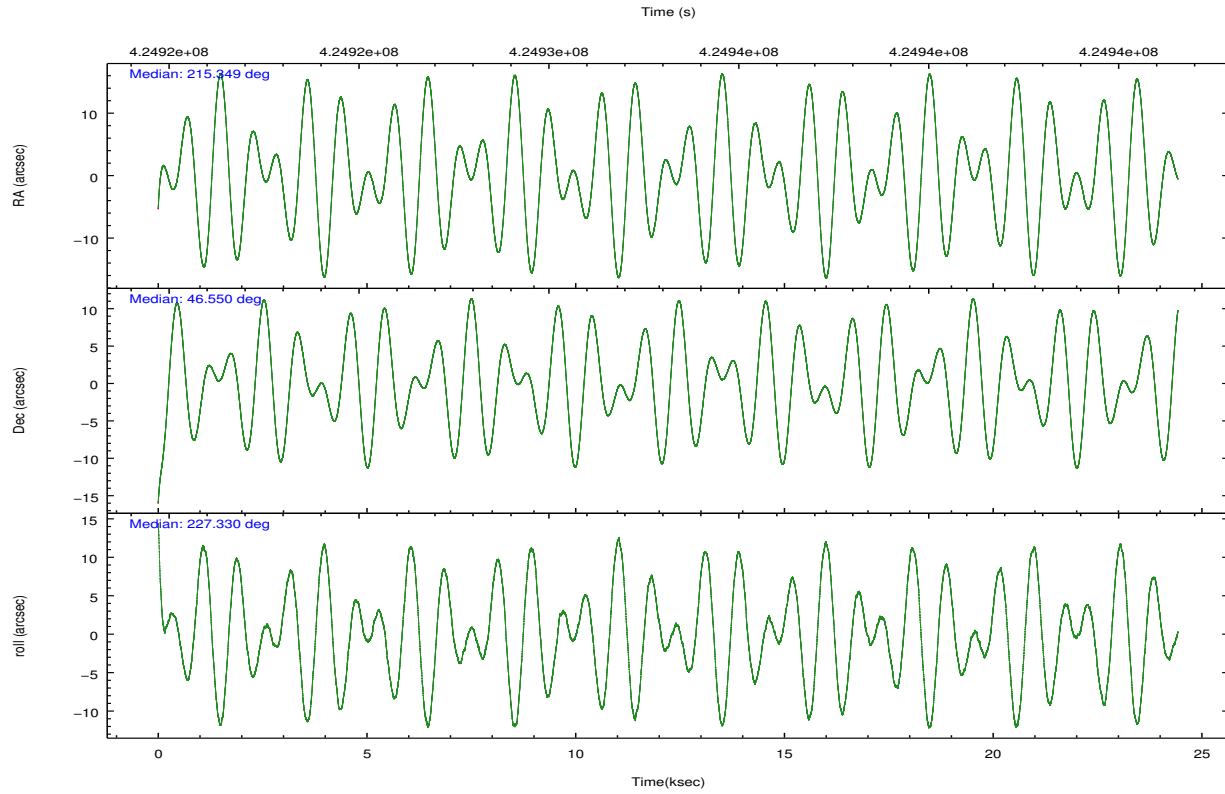
	<b>ccd 7</b>
grade 0 events	4426
	4%
grade 1 events	145
	0%
grade 2 events	9402
	9%
grade 3 events	4614
	4%
grade 4 events	4546
	4%
grade 5 events	10330
	10%
grade 6 events	22290
	23%
grade 7 events	39616
	41%

## 2.2 Compared Parameters

Parameter	Planned	Actual	Parameter	Planned	Actual
Instrument	ACIS	ACIS	Obspar format version number	7	7
Detector	ACIS-7	ACIS-7	Obspar file type	PREDICTED	ACTUAL
Grating	NONE	NONE	Obspar update status	NONE	UPDATED
Data mode	FAINT	FAINT	Number of optional ACIS chips dropped	0	0
Observation mode	POINTING	POINTING	On-chip summing requested	N	N
[deg] Pointing RA	215.356840	215.348658045298	Subarray requested	CUSTOM	1/2
[deg] Pointing Dec	46.576965	46.55019770202819	Subarray start row	257	257
[deg] Pointing Roll	227.173760	227.3363283600668	Subarray row count	512	512
[mm] SIM focus pos	-0.684267	-0.6828225247311905	Alternating exposures requested	N	N
[mm] SIM defocus	0	0.001444936568705701	[s] Primary exposure time	0.000000	1.5
[mm] SIM translation stage pos	-190.132523	-190.1400660498719			
[mm] SIM translation stage offset	0	0.00754346686406393			
[s] Observation start time (MET)	424921117.184000	424920259.57174			
Observation start date	2011-06-20T01:37:31	2011-06-20T01:24:19			
[s] Observation end time (MET)	424945353.184000	424945579.63555			
Observation end date	2011-06-20T08:21:27	2011-06-20T08:26:19			
Read mode	TIMED	TIMED			

## 2.3 Aspect



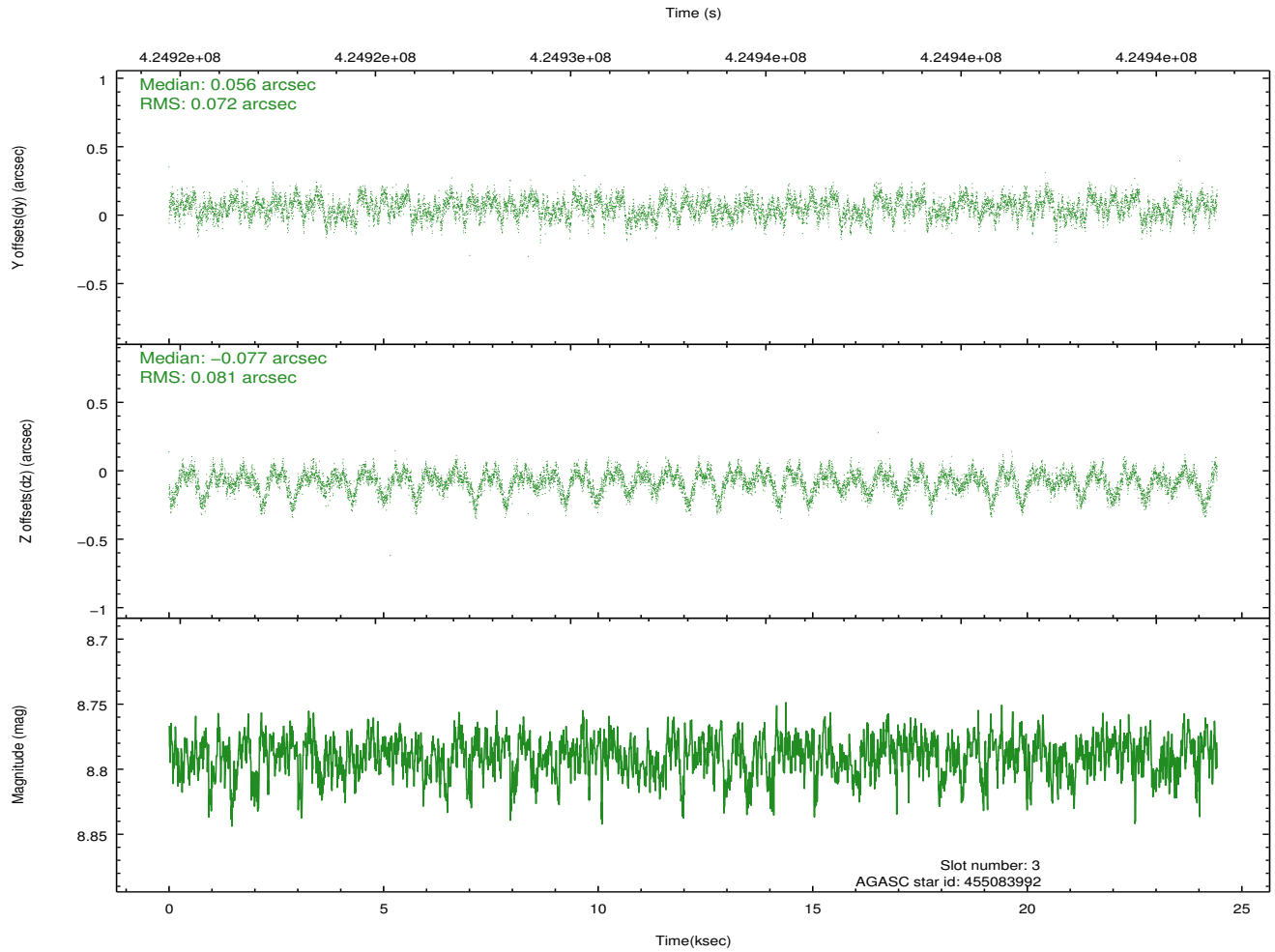
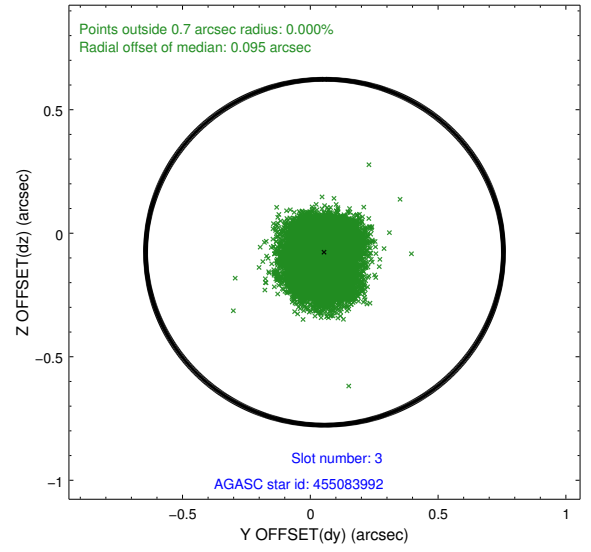
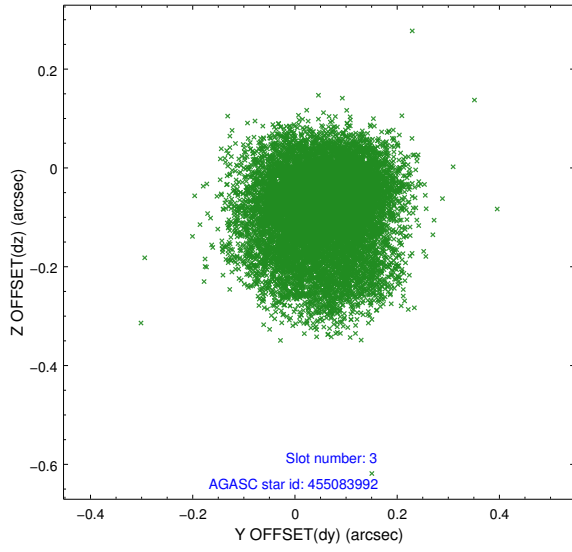


### Slot Statistics

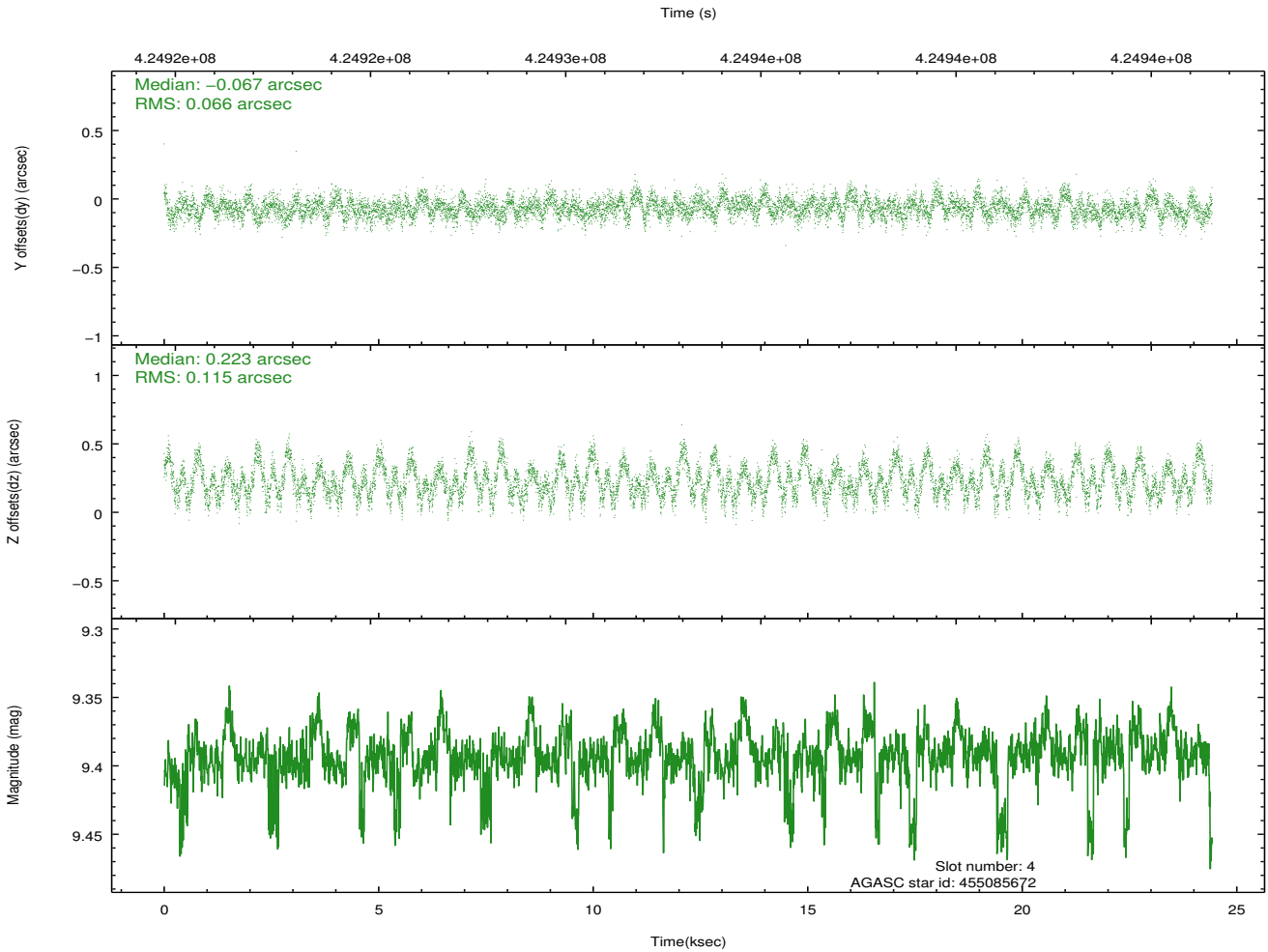
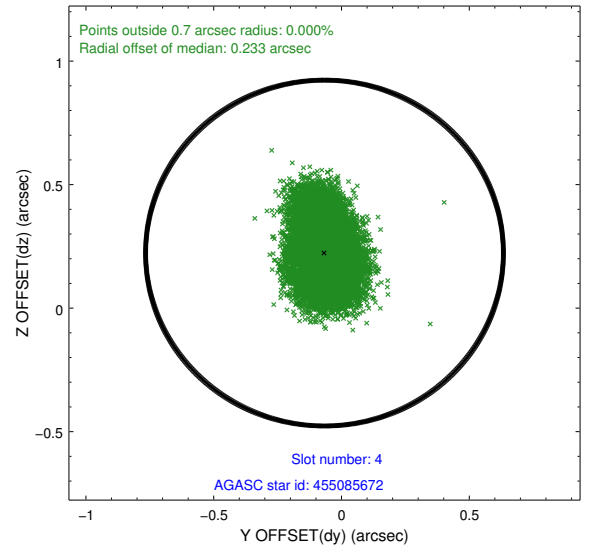
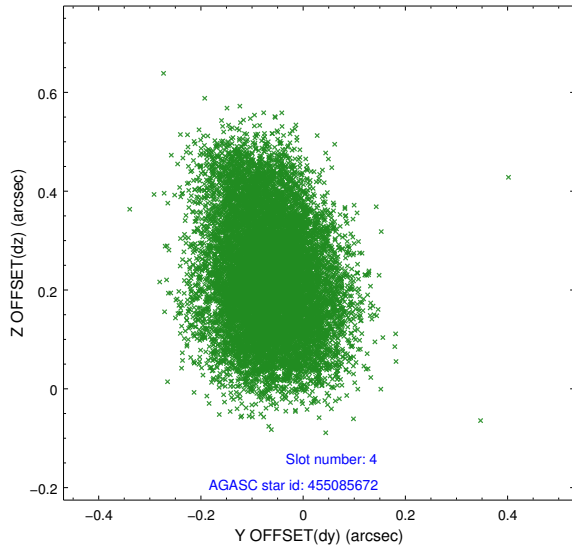
slot	status	id	mag	n_pts	med_dy	med_dz	dr1	dr2	ra	dec	mean_y	mean_z
0	FID	ACIS-S-2	6.92	5959	-0.074	-0.043	0.009	0.014	0.000000	0.000000	-771.17	-1738.61
1	FID	ACIS-S-4	6.99	5959	0.227	0.047	0.009	0.016	0.000000	0.000000	2142.38	169.78
2	FID	ACIS-S-5	7.02	5959	-0.184	0.005	0.010	0.018	0.000000	0.000000	-1823.94	163.62
3	GUIDE	455083992	8.79	11907	0.056	-0.077	0.116	0.188	214.489170	46.384559	1964.76	-1117.56
4	GUIDE	455085672	9.39	11909	-0.067	0.223	0.141	0.230	215.670896	46.931477	-1461.62	-302.12
5	GUIDE	455086288	8.21	11914	-0.100	-0.093	0.084	0.132	215.702797	46.116120	628.59	1759.98
6	GUIDE	455089024	8.05	11915	-0.076	0.006	0.082	0.136	216.032003	46.769703	-1644.50	743.34
7	GUIDE	455090032	8.08	11915	0.189	-0.055	0.077	0.127	214.125860	46.552613	2119.04	-2191.01

## 2.4 Star Slots

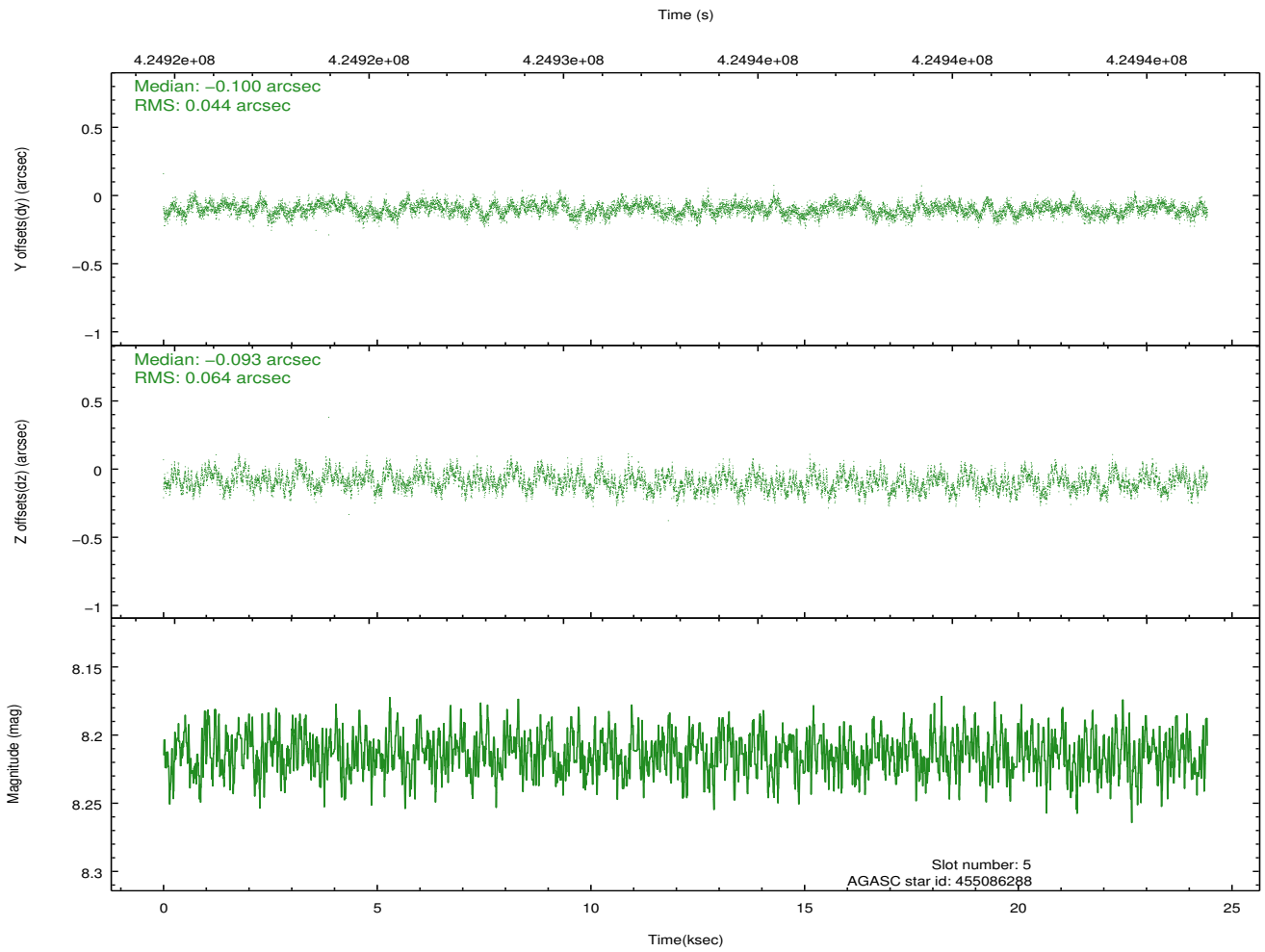
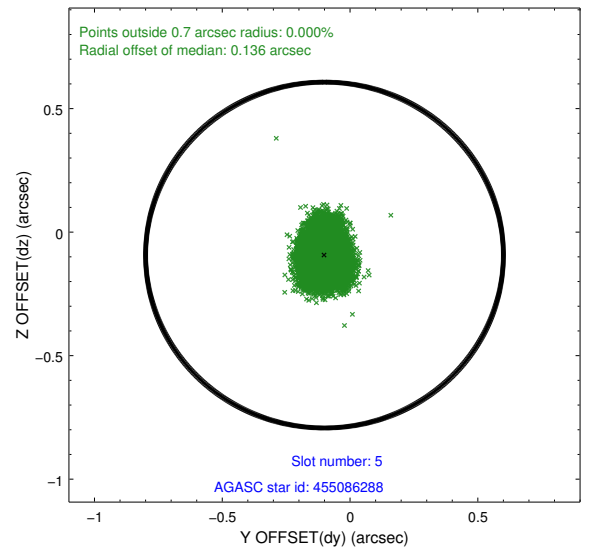
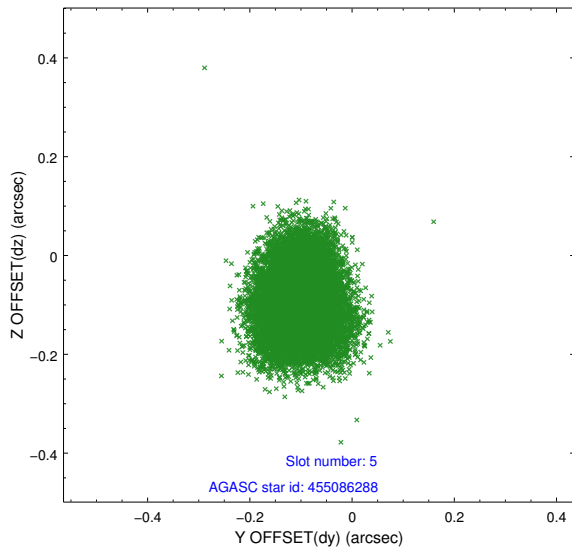
### 2.4.1 Slot 3



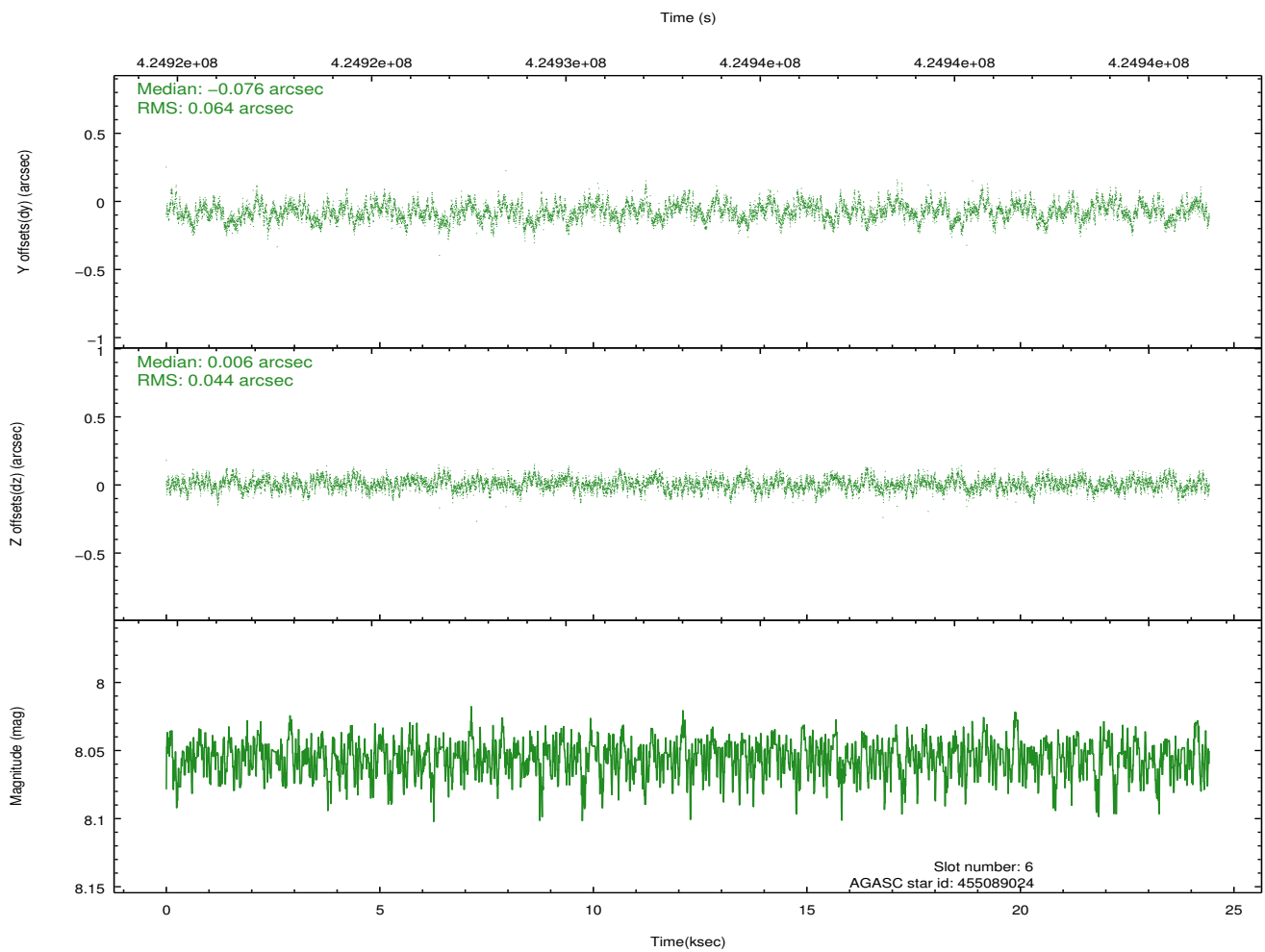
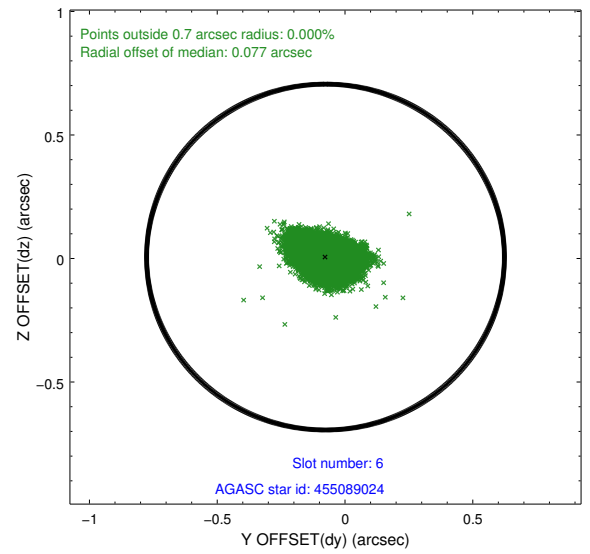
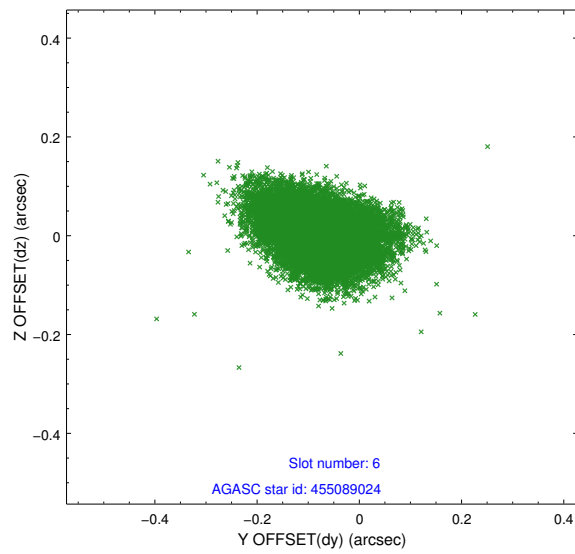
## 2.4.2 Slot 4



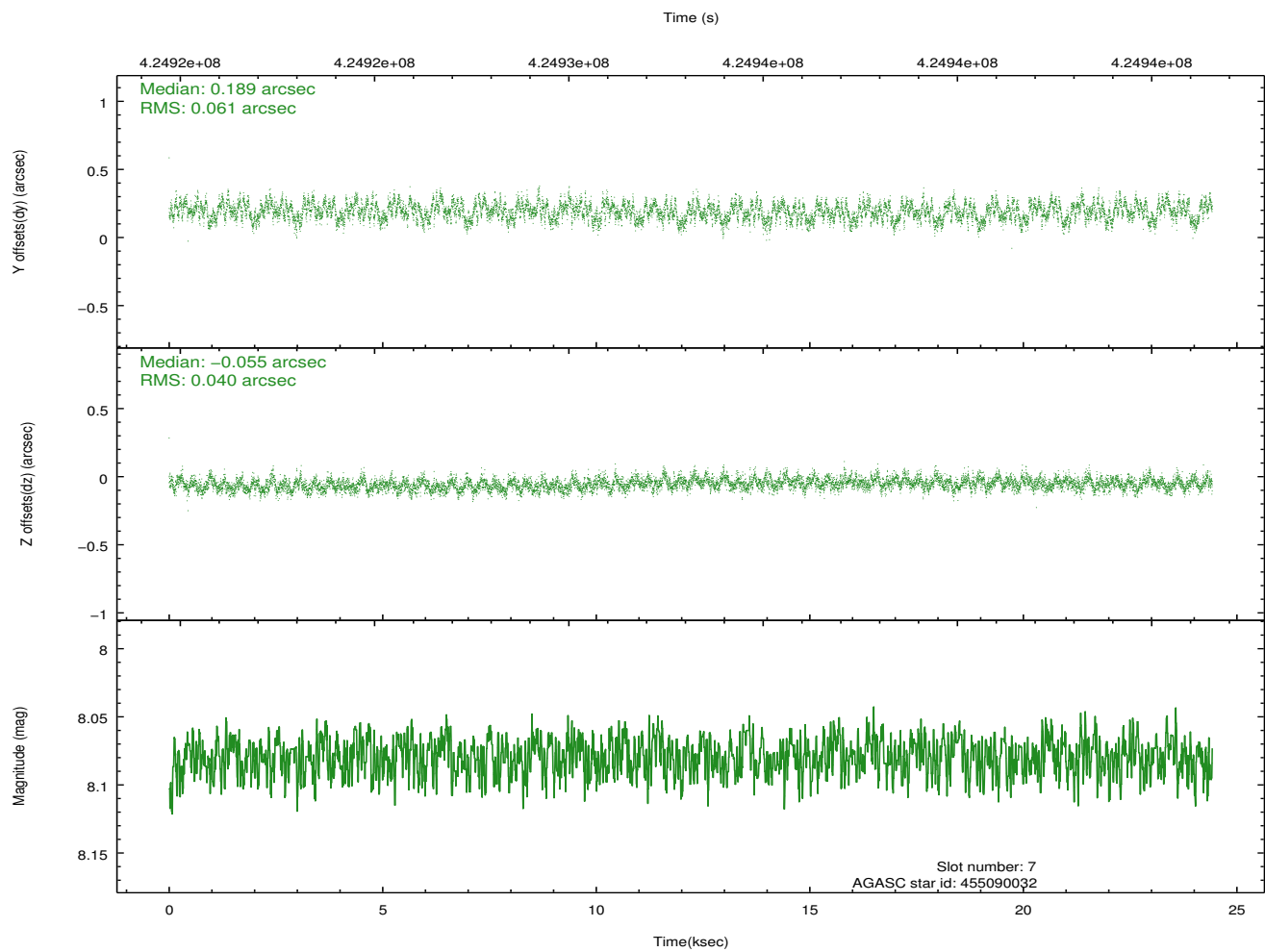
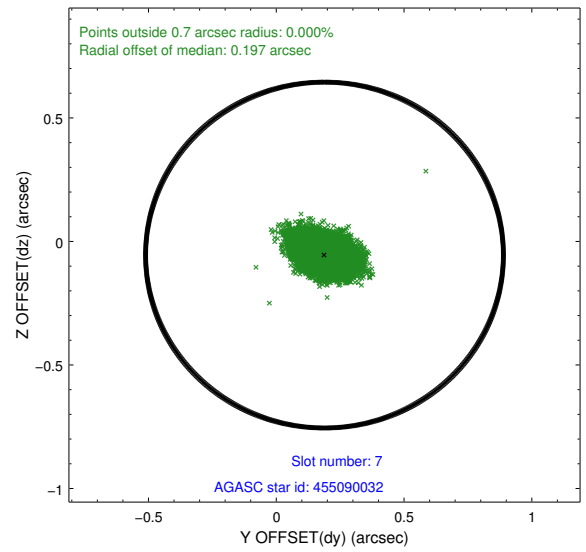
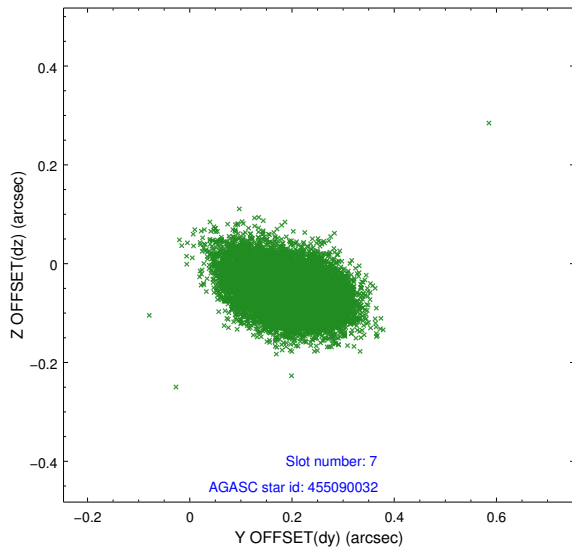
### 2.4.3 Slot 5



## 2.4.4 Slot 6

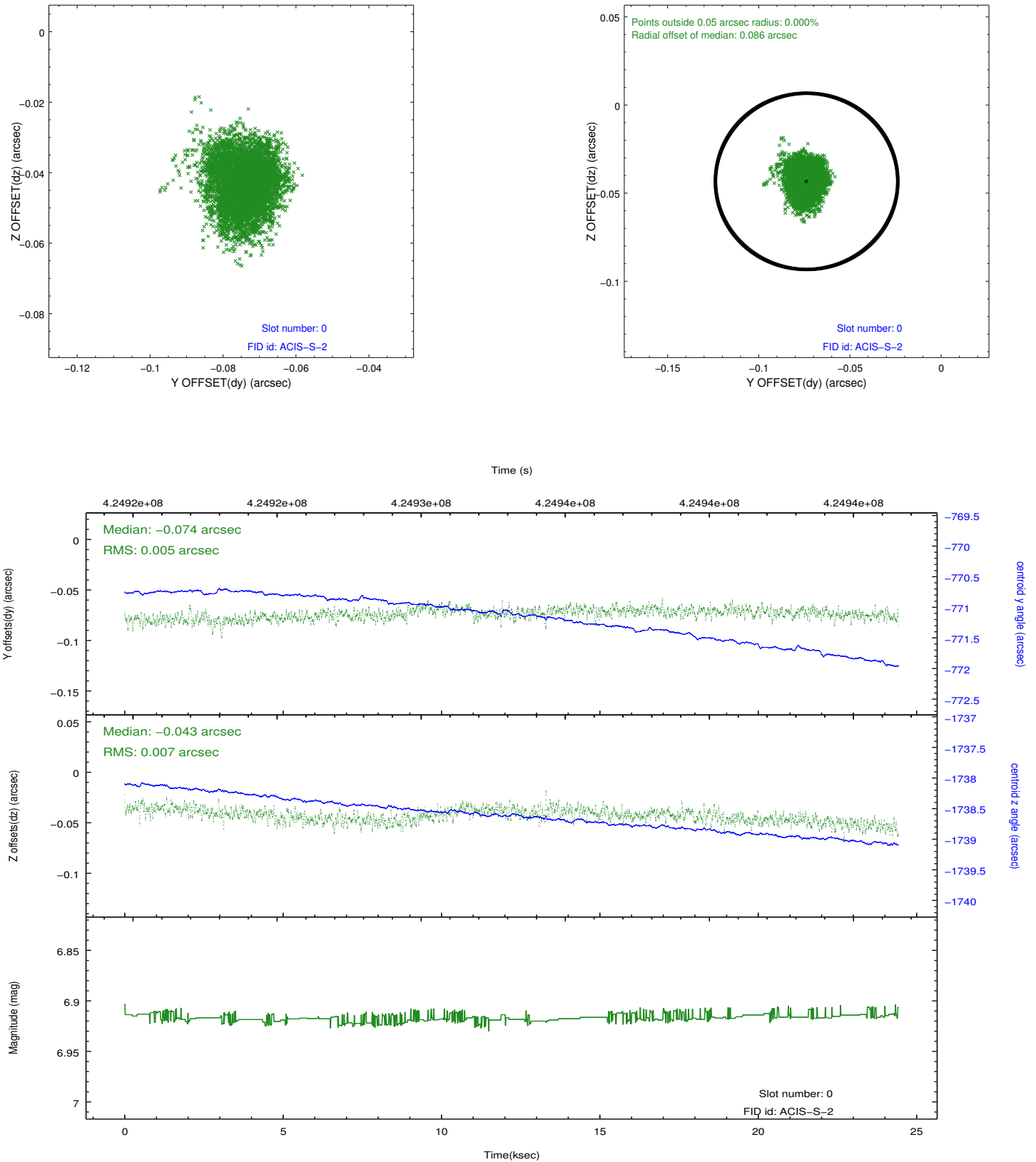


## 2.4.5 Slot 7

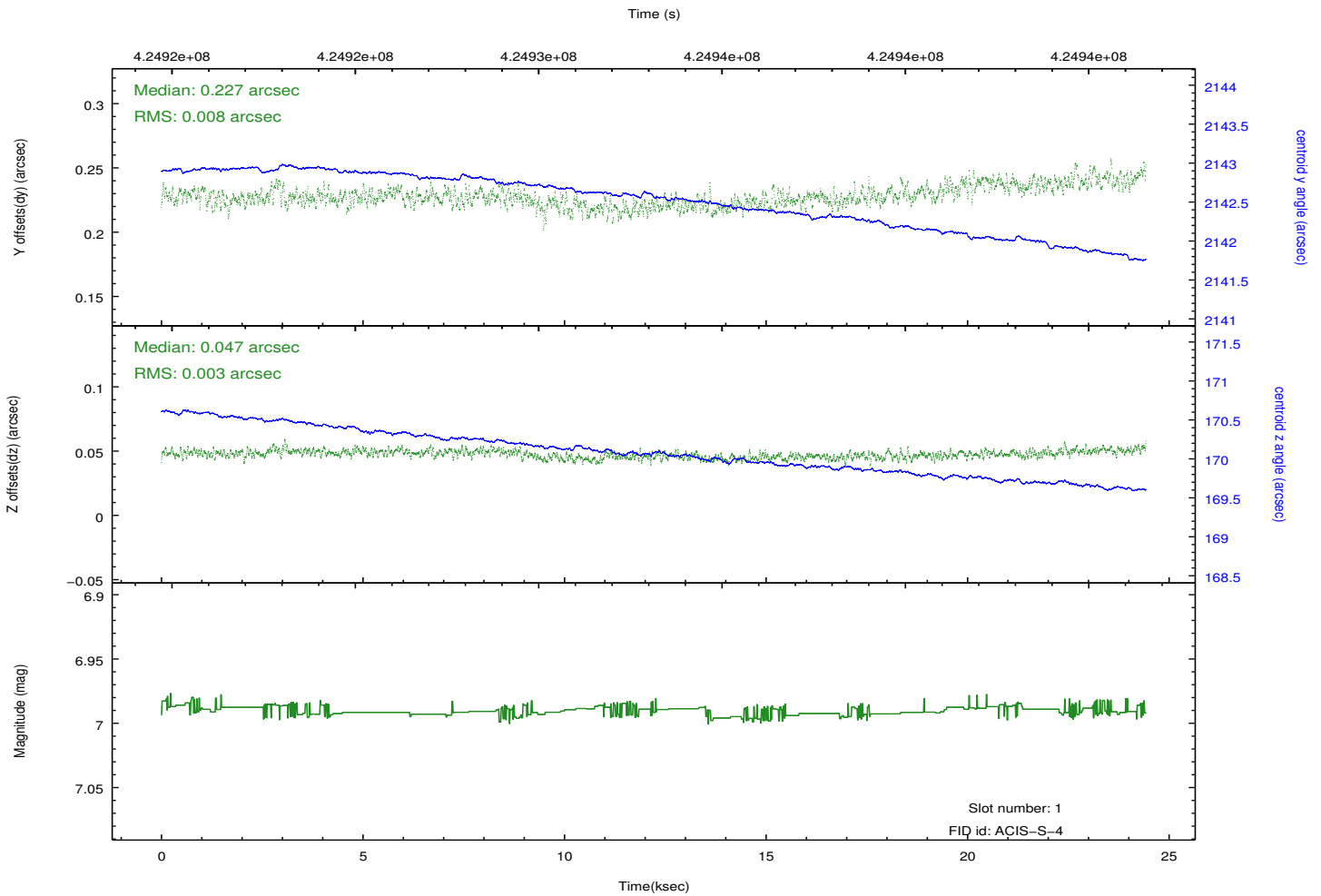
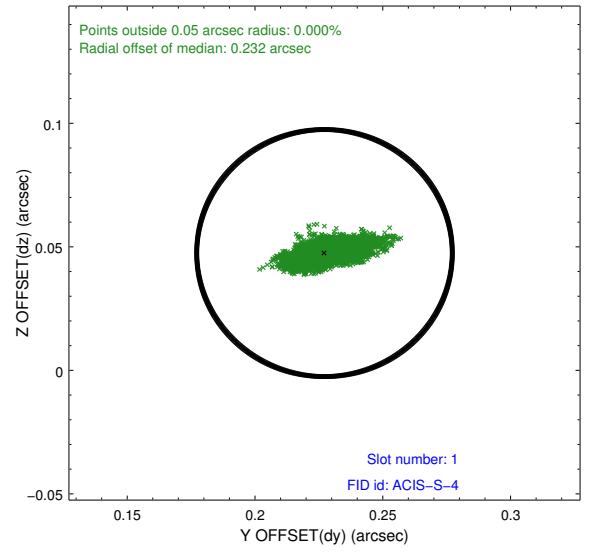
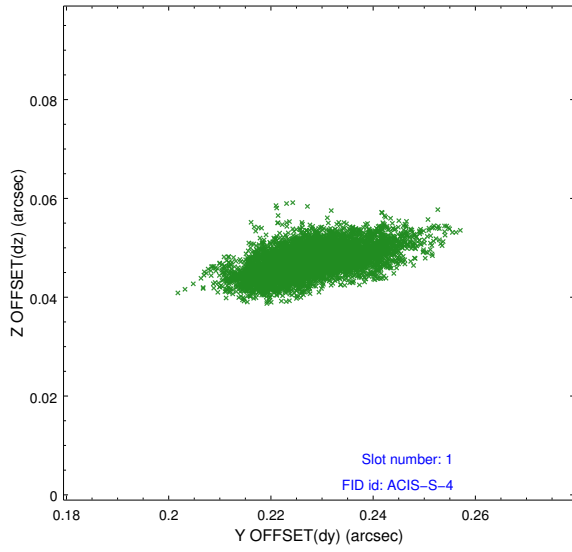


## 2.5 FID Slots

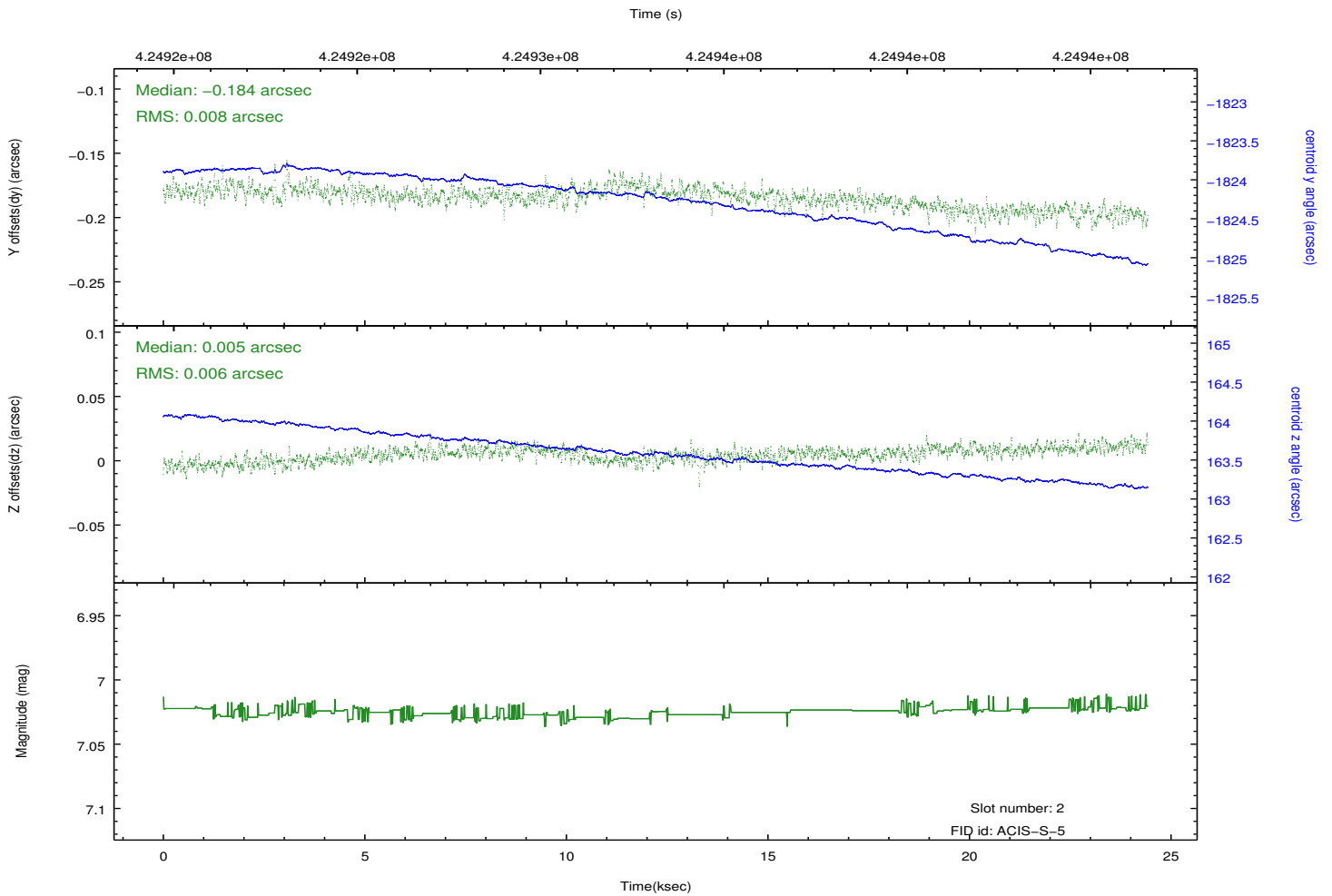
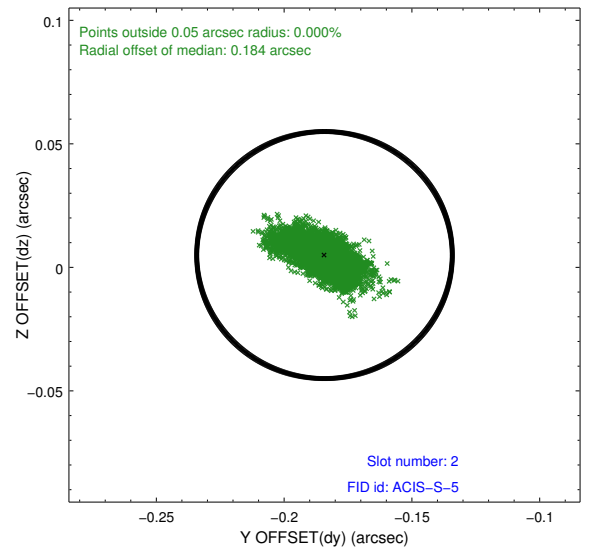
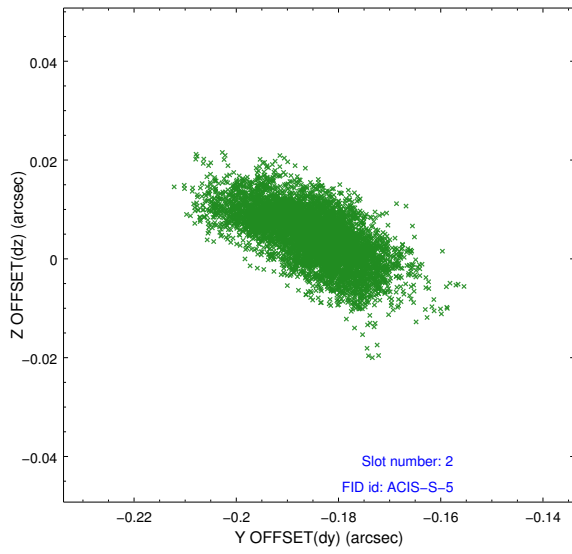
### 2.5.1 Slot 0



## 2.5.2 Slot 1



### 2.5.3 Slot 2



# A Summary

## A.1 Status

V&V Scientist	Jen Lauer
V&V Date (YYYY-MM-DD)	2012.02.14
V&V Edition	1
V&V Disposition and Status	OK
V&V Charge Time	24.284720774889

## A.2 Comments