

# V&V Reference Report

## L2 ASCDS Version : 8.4.3

Observation 13659 - L2 Version 1  
Chandra X-Ray Center

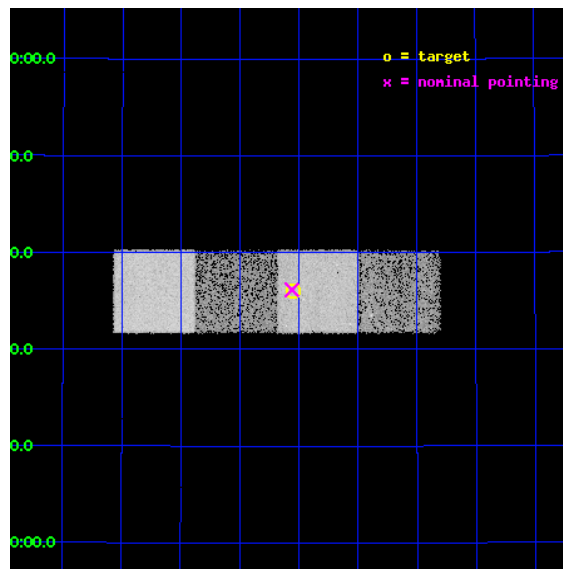
L2 Processing Date : Jan 7 2012

## Contents

<b>1</b>	<b>Front</b>	<b>2</b>
<b>2</b>	<b>OBI</b>	<b>3</b>
2.1	OBI . . . . .	3
2.1.1	Images . . . . .	3
2.1.2	Bias . . . . .	3
2.1.3	Parameters . . . . .	4
2.1.4	Events . . . . .	4
2.2	Compared Parameters . . . . .	5
2.3	Aspect . . . . .	6
2.4	Star Slots . . . . .	9
2.4.1	Slot 3 . . . . .	9
2.4.2	Slot 4 . . . . .	10
2.4.3	Slot 5 . . . . .	11
2.4.4	Slot 6 . . . . .	12
2.4.5	Slot 7 . . . . .	13
2.5	FID Slots . . . . .	14
2.5.1	Slot 0 . . . . .	14
2.5.2	Slot 1 . . . . .	15
2.5.3	Slot 2 . . . . .	16
<b>A</b>	<b>Summary</b>	<b>17</b>
A.1	Status . . . . .	17
A.2	Comments . . . . .	17

# 1 Front

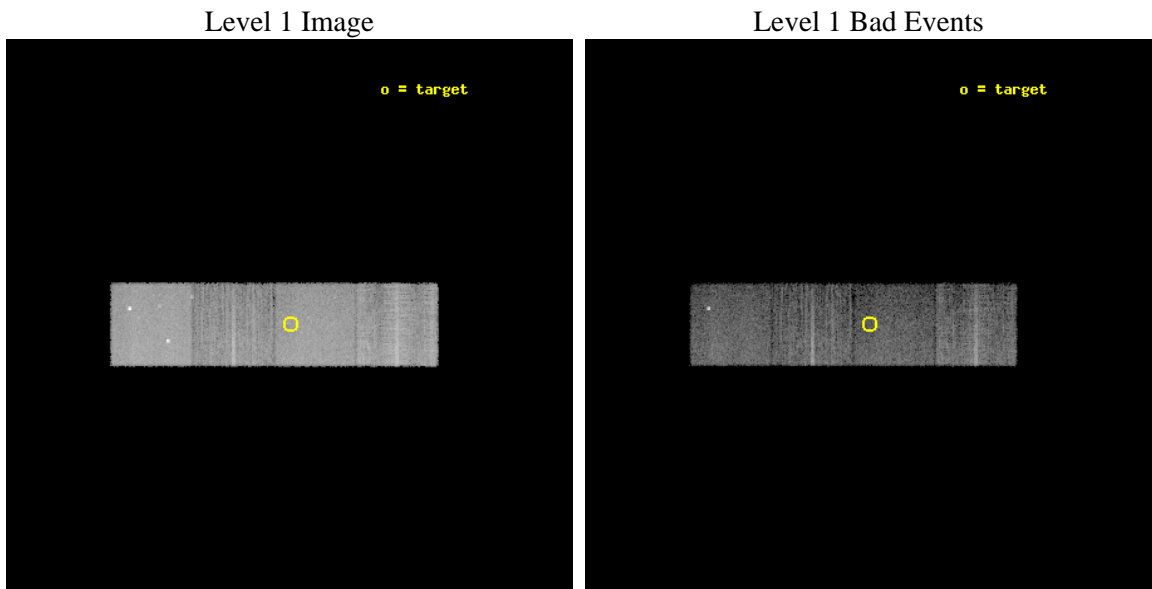
seq_num	200809	Sequence number
obs_id	13659	Observation id
title	Testing Star-Planet Interaction in Solar Analogs	Proposal title
observer	Brendan Miller	Principal investigator
object	HD 178911B	Source name
dtcycle	0	&#160
cycle	P	events from which exps? Prim/Second/Both
ra_targ	287.262917	Observer's specified target RA [deg]
dec_targ	34.599861	Observer's specified target Dec [deg]
ra_nom	287.26487016267	Nominal RA [deg]
dec_nom	34.602458565955	Nominal Dec [deg]
roll_nom	0.0084067367034318	Nominal Roll [deg]
revision	1	Processing version of data
ontime	10049.263078451	Sum of GTIs [s]
livetime	9917.9620581713	Livetime [s]
ontime5	10049.222038448	Sum of GTIs [s]
ontime6	10049.180998445	Sum of GTIs [s]
ontime7	10049.263078451	Sum of GTIs [s]
ontime8	10049.139958441	Sum of GTIs [s]
l2events	96545	Number of level 2 events



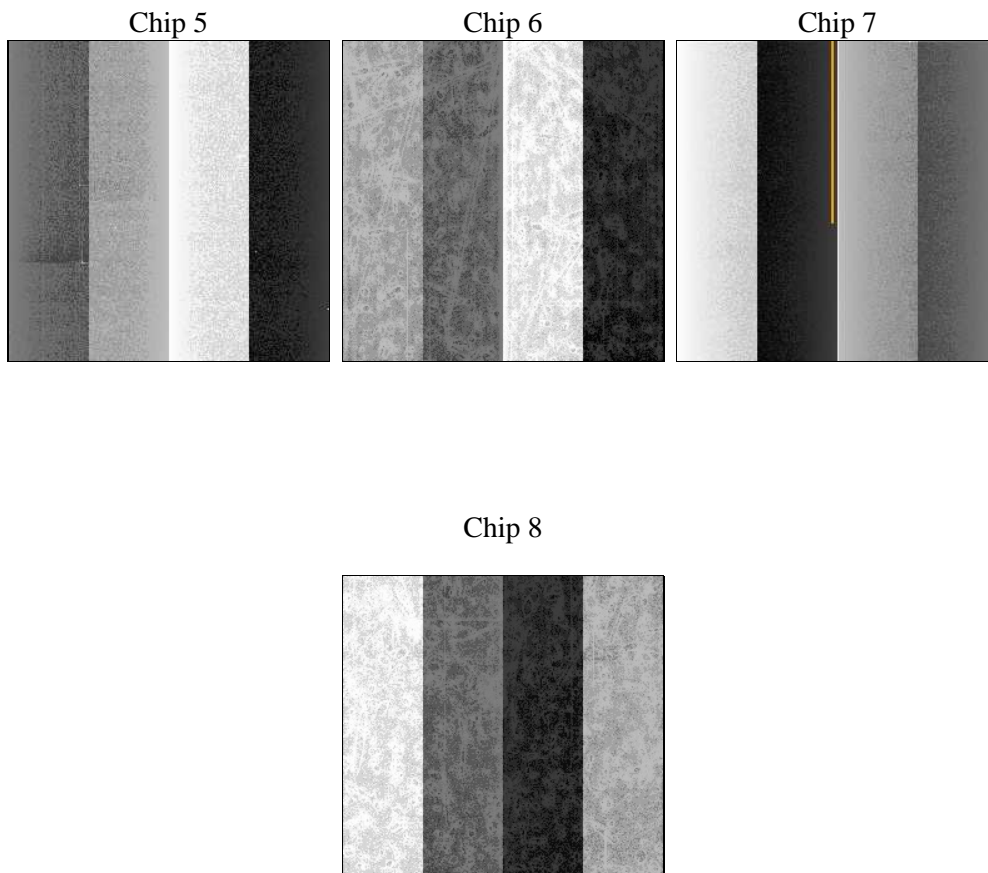
## 2 OBI

### 2.1 OBI

#### 2.1.1 Images



#### 2.1.2 Bias



### 2.1.3 Parameters

obi_num	0	Obi number	sched_exp_time	10000.000000	[s] Scheduled observation exposure time
ascdsver	8.4.3	Processing system revision	ontime	10049.263078451	Sum of GTIs [s]
caldbver	4.4.7	&#160	ontime5	10049.222038448	Sum of GTIs [s]
date	2012-01-07T06:46:14	Date and time of file creation	ontime6	10049.180998445	Sum of GTIs [s]
revision	1	Processing version of data	ontime7	10049.263078451	Sum of GTIs [s]
			ontime8	10049.139958441	Sum of GTIs [s]
			l1events	335877	Number of level 1 events

### 2.1.4 Events

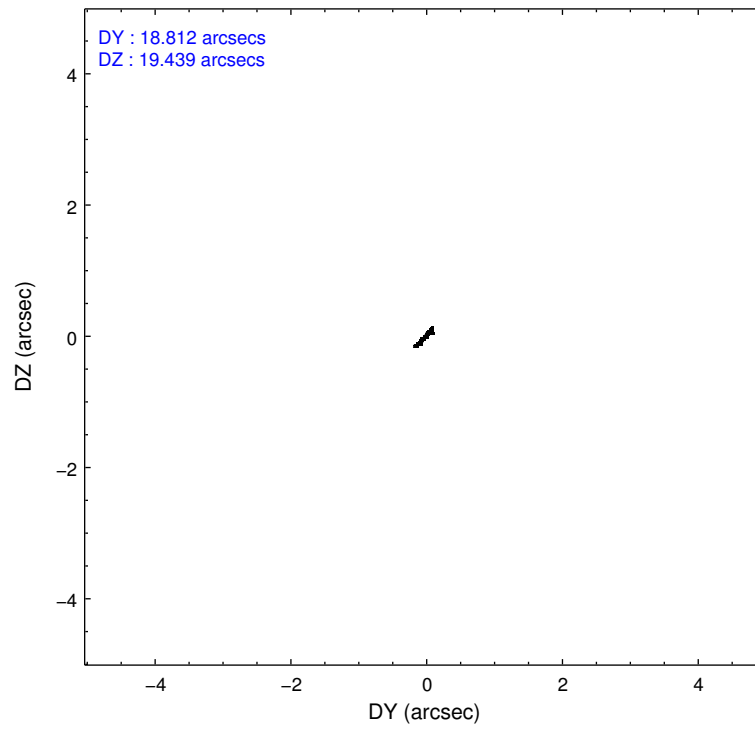
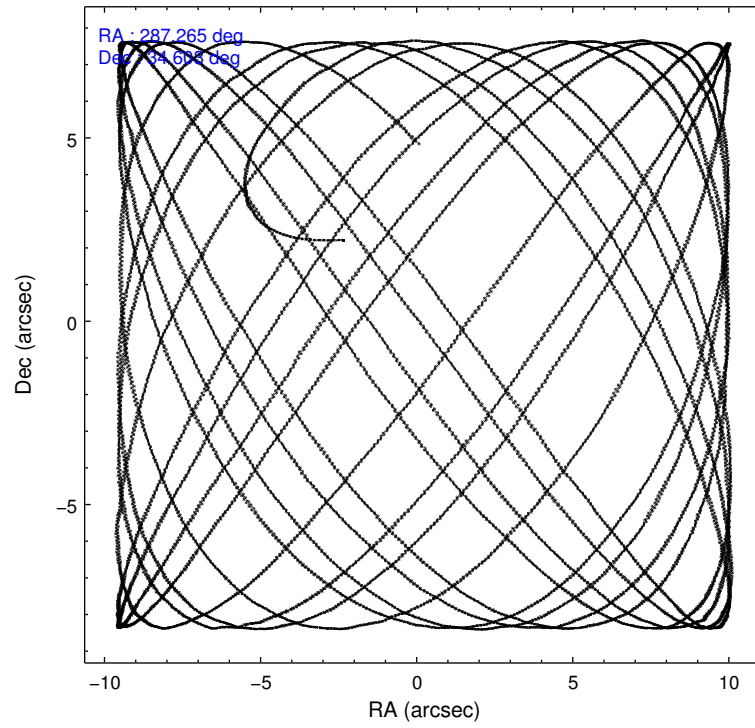
	ccd 5	ccd 6	ccd 7	ccd 8
level 1 events	104081	61830	82938	87028
rejected events	52842	54381	46015	63676
rejected %	50%	87%	55%	73%

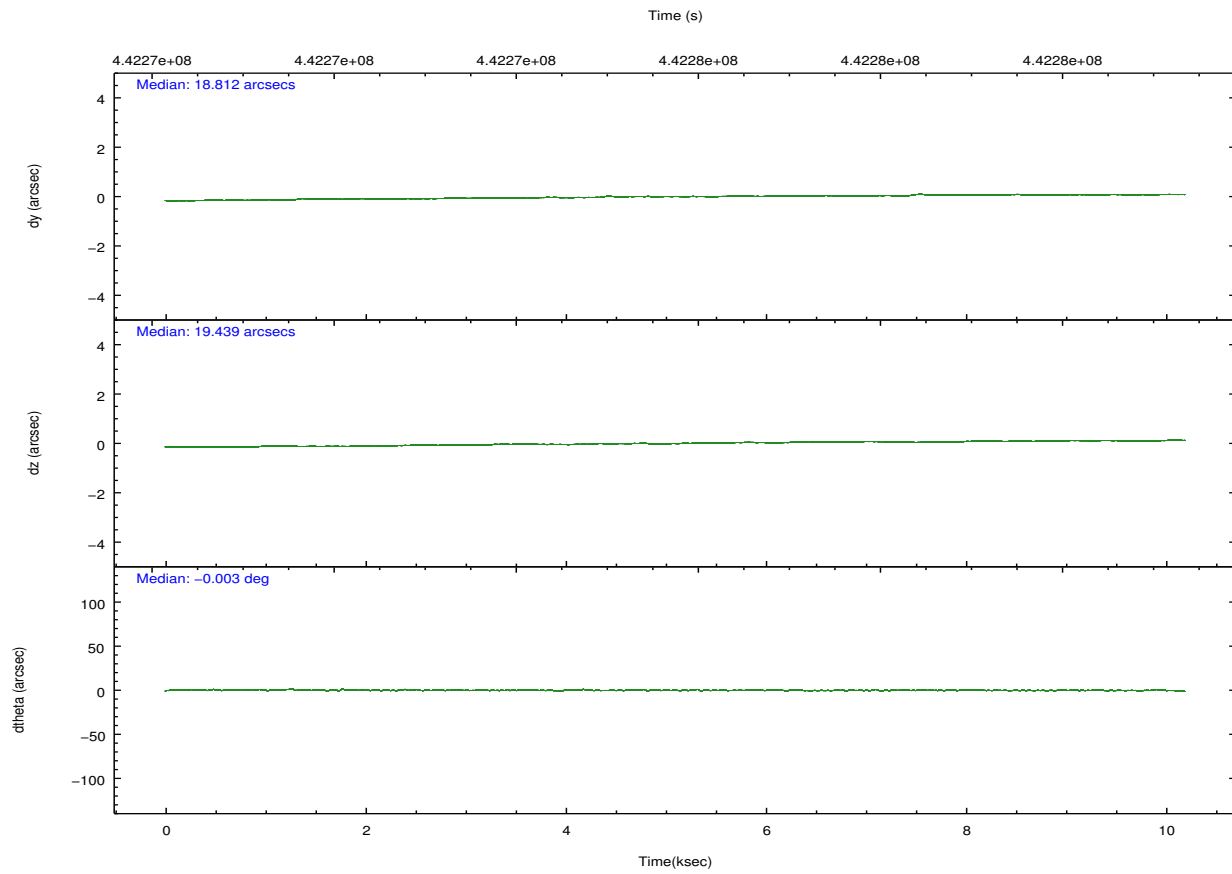
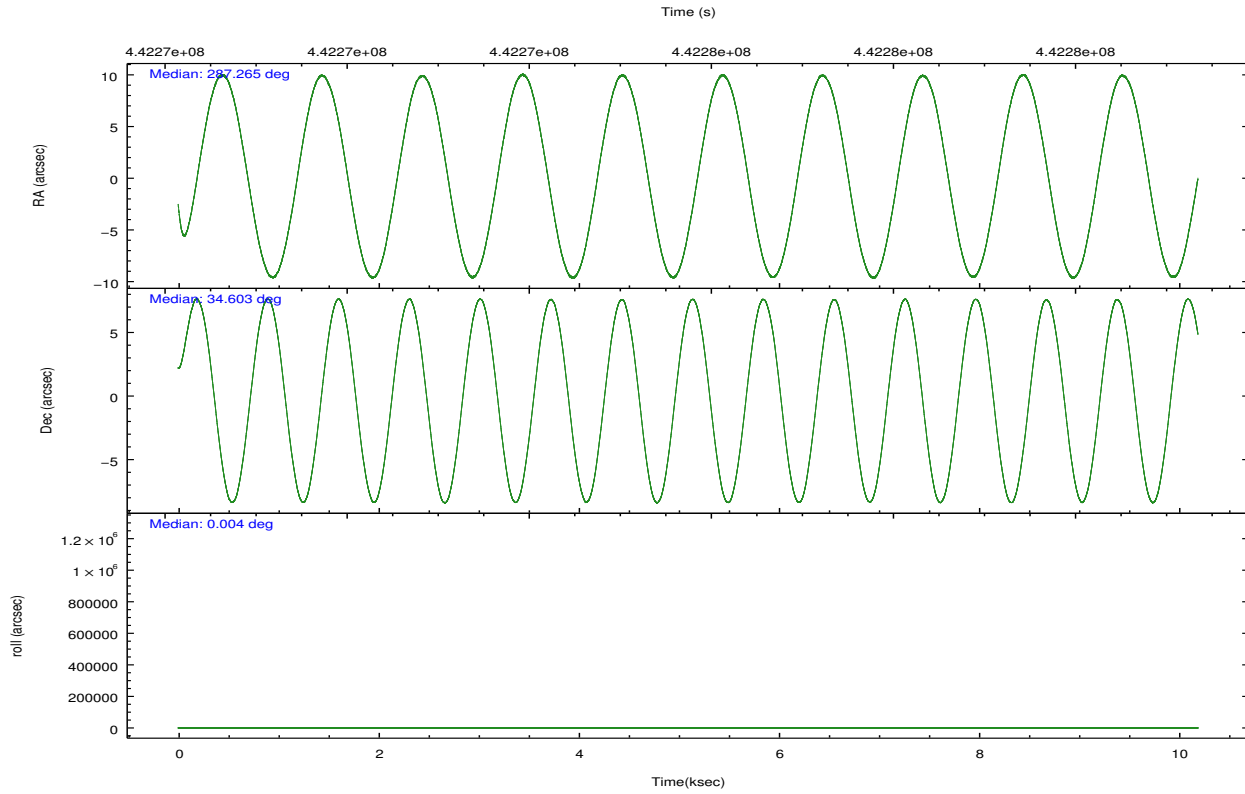
	ccd 5	ccd 6	ccd 7	ccd 8
grade 0 events	5574	2604	3368	6944
	5%	4%	4%	7%
grade 1 events	228	38	101	69
	0%	0%	0%	0%
grade 2 events	15908	1630	7523	5472
	15%	2%	9%	6%
grade 3 events	1810	772	3239	2357
	1%	1%	3%	2%
grade 4 events	1666	753	3193	2164
	1%	1%	3%	2%
grade 5 events	7783	3079	8617	4499
	7%	4%	10%	5%
grade 6 events	26312	1693	19625	6429
	25%	2%	23%	7%
grade 7 events	44800	51261	37272	59094
	43%	82%	44%	67%

## 2.2 Compared Parameters

Parameter	Planned	Actual	Parameter	Planned	Actual
Instrument	ACIS	ACIS	Obspar format version number	7	7
Detector	ACIS-5678	ACIS-5678	Obspar file type	PREDICTED	ACTUAL
Grating	NONE	NONE	Obspar update status	NONE	UPDATED
Data mode	VFAINT	VFAINT	CCD I0 on	N	N
Observation mode	POINTING	POINTING	CCD I1 on	N	N
[deg] Pointing RA	287.236359	287.264870162667	CCD I2 on	N	N
[deg] Pointing Dec	34.588410	34.60245856595517	CCD I3 on	N	N
[deg] Pointing Roll	359.867982	0.008406736703431769	CCD S0 on	N	N
[mm] SIM focus pos	-0.684267	-0.6828225247311905	CCD S1 on	O1	Y
[mm] SIM defocus	0	0.001444936568705701	CCD S2 on	O2	Y
[mm] SIM translation stage pos	-190.132523	-190.145094680475	CCD S3 on	Y	Y
[mm] SIM translation stage offset	0	0.01257209746719923	CCD S4 on	O3	Y
[s] Observation start time (MET)	442270837.184000	442269964.93509	CCD S5 on	N	N
Observation start date	2012-01-06T20:59:31	2012-01-06T20:46:04	Number of optional ACIS chips dropped	0	0
[s] Observation end time (MET)	442280837.184000	442281863.13572	On-chip summing requested	N	N
Observation end date	2012-01-06T23:46:11	2012-01-07T00:04:23	Subarray requested	NONE	NONE
Read mode	TIMED	TIMED	Alternating exposures requested	N	N
			[s] Primary exposure time	0.000000	3.1

## 2.3 Aspect



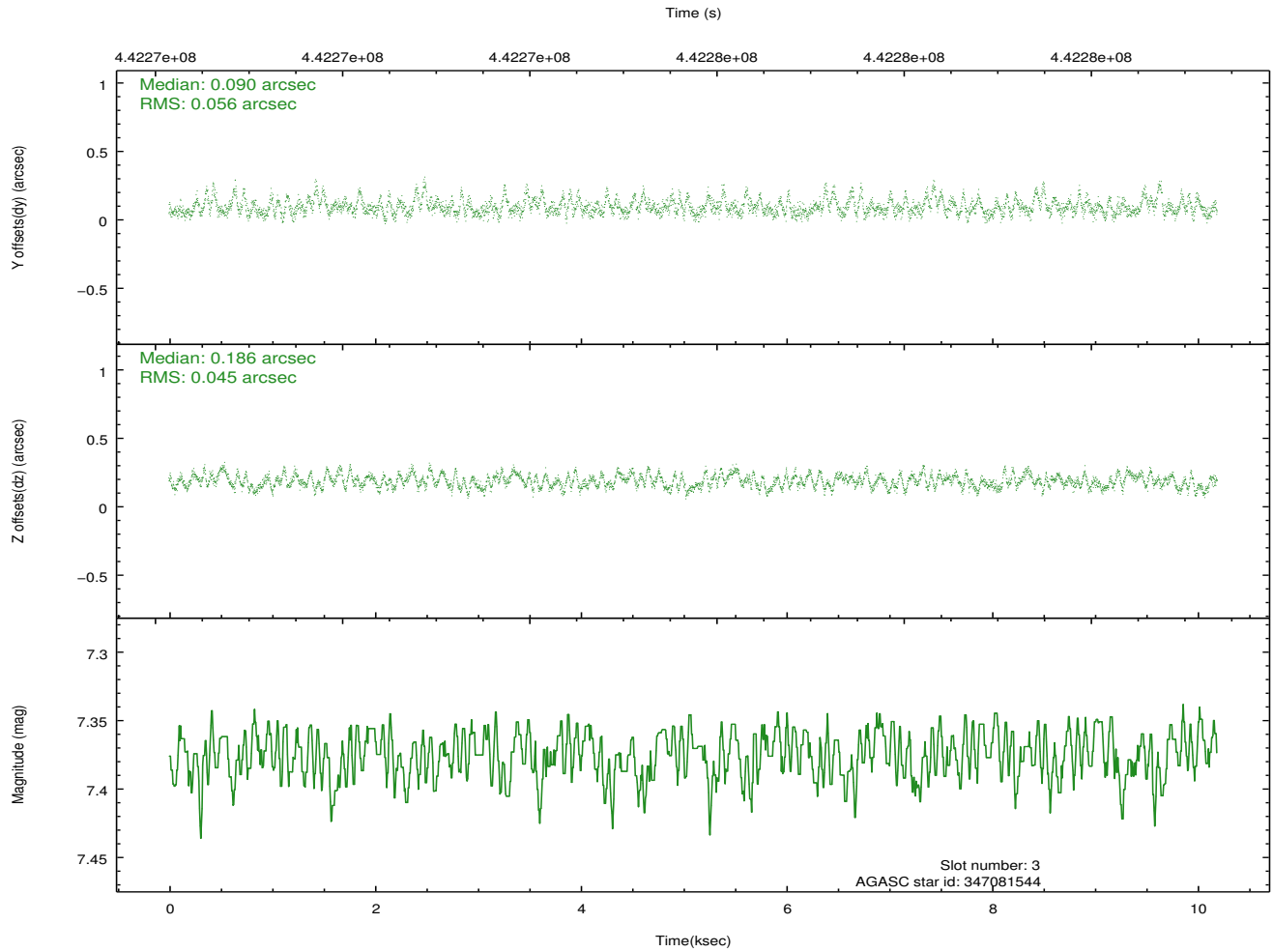
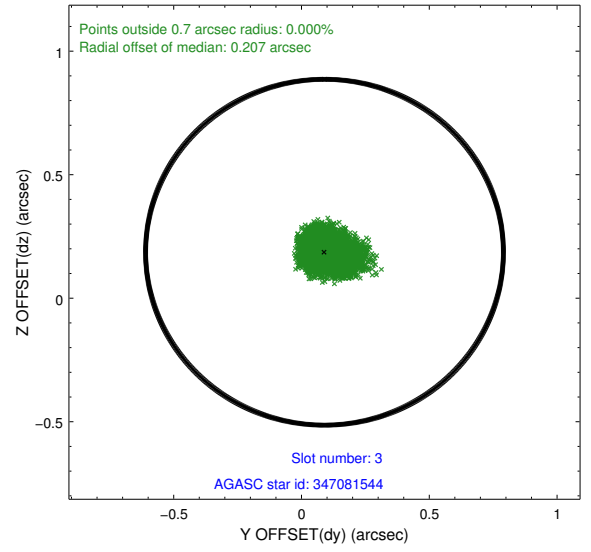
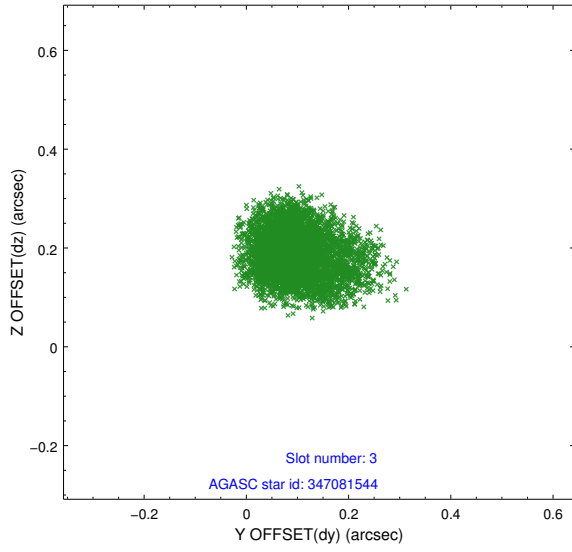


### Slot Statistics

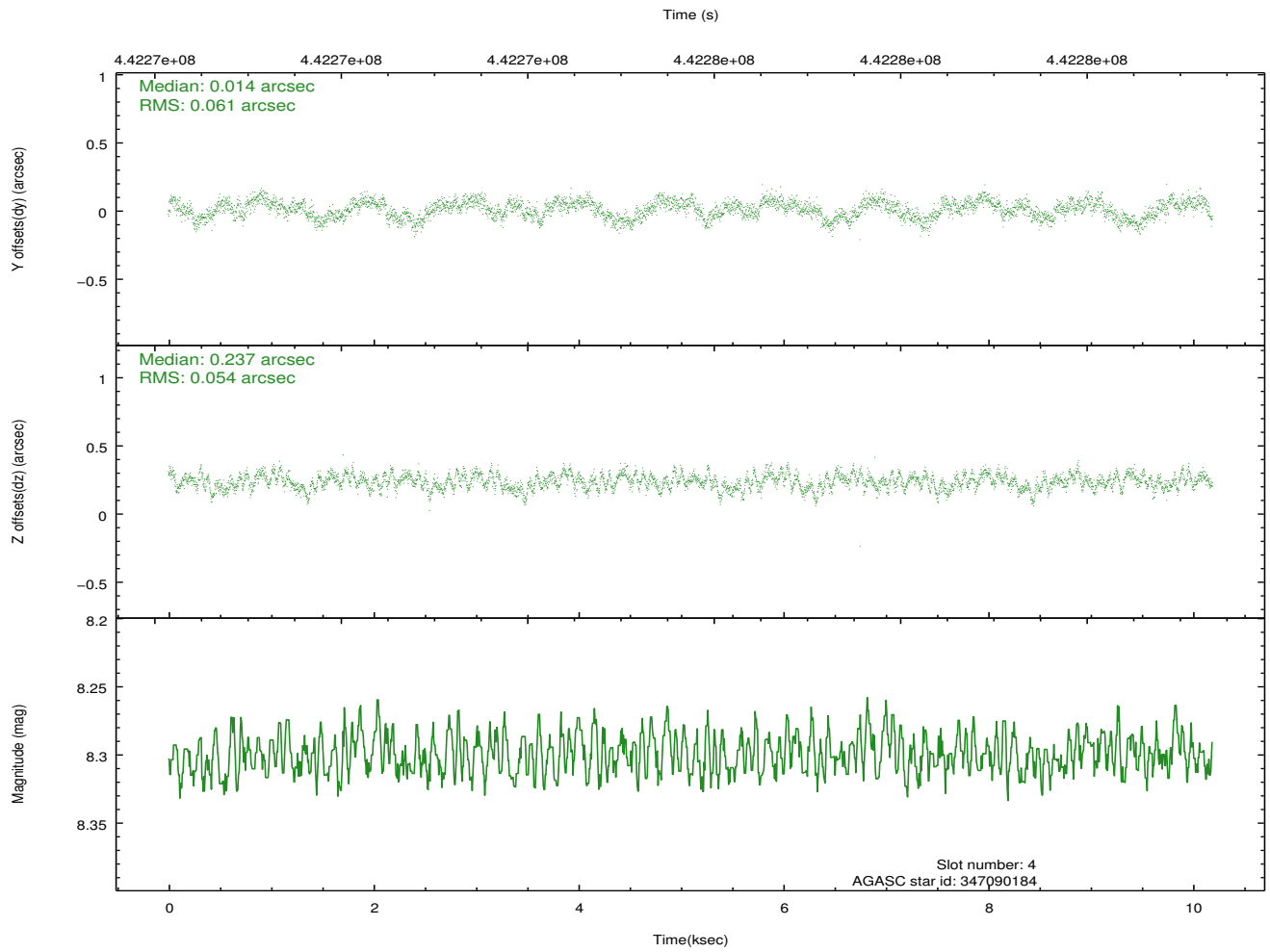
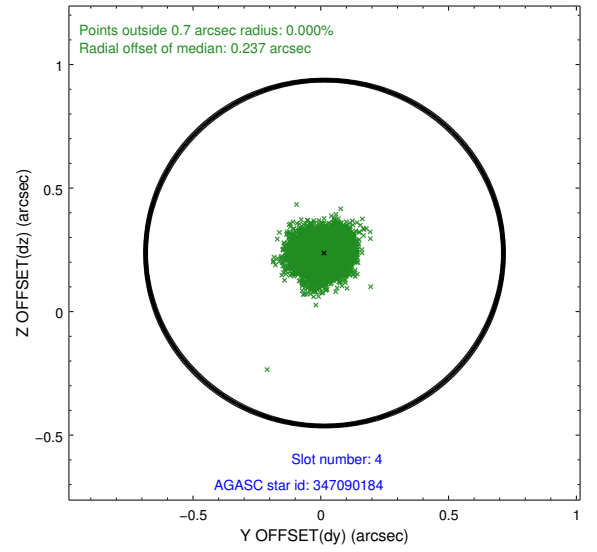
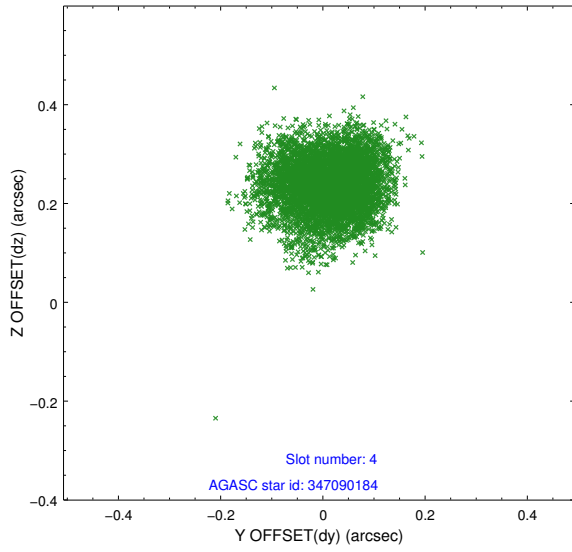
slot	status	id	mag	n_pts	med_dy	med_dz	dr1	dr2	ra	dec	mean_y	mean_z
0	FID	ACIS-S-2	6.91	2484	-0.118	-0.040	0.007	0.012	0.000000	0.000000	-772.00	-1740.86
1	FID	ACIS-S-4	6.99	2486	0.279	0.068	0.006	0.012	0.000000	0.000000	2141.45	167.16
2	FID	ACIS-S-5	7.02	2486	-0.192	-0.019	0.007	0.011	0.000000	0.000000	-1824.24	161.38
3	GUIDE	347081544	7.38	4972	0.090	0.186	0.076	0.127	286.890885	34.393102	-1024.10	-703.79
4	GUIDE	347090184	8.30	4972	0.014	0.237	0.088	0.137	286.707857	34.041847	-1571.72	-1967.39
5	GUIDE	347095176	8.68	4963	-0.030	0.008	0.083	0.139	287.895801	34.459203	1958.57	-454.68
6	GUIDE	348801416	9.06	4967	0.104	0.012	0.096	0.165	288.028222	34.147296	2363.95	-1573.50
7	GUIDE	347084400	7.88	4971	-0.179	-0.446	0.072	0.111	287.323011	35.185006	250.57	2147.52

## 2.4 Star Slots

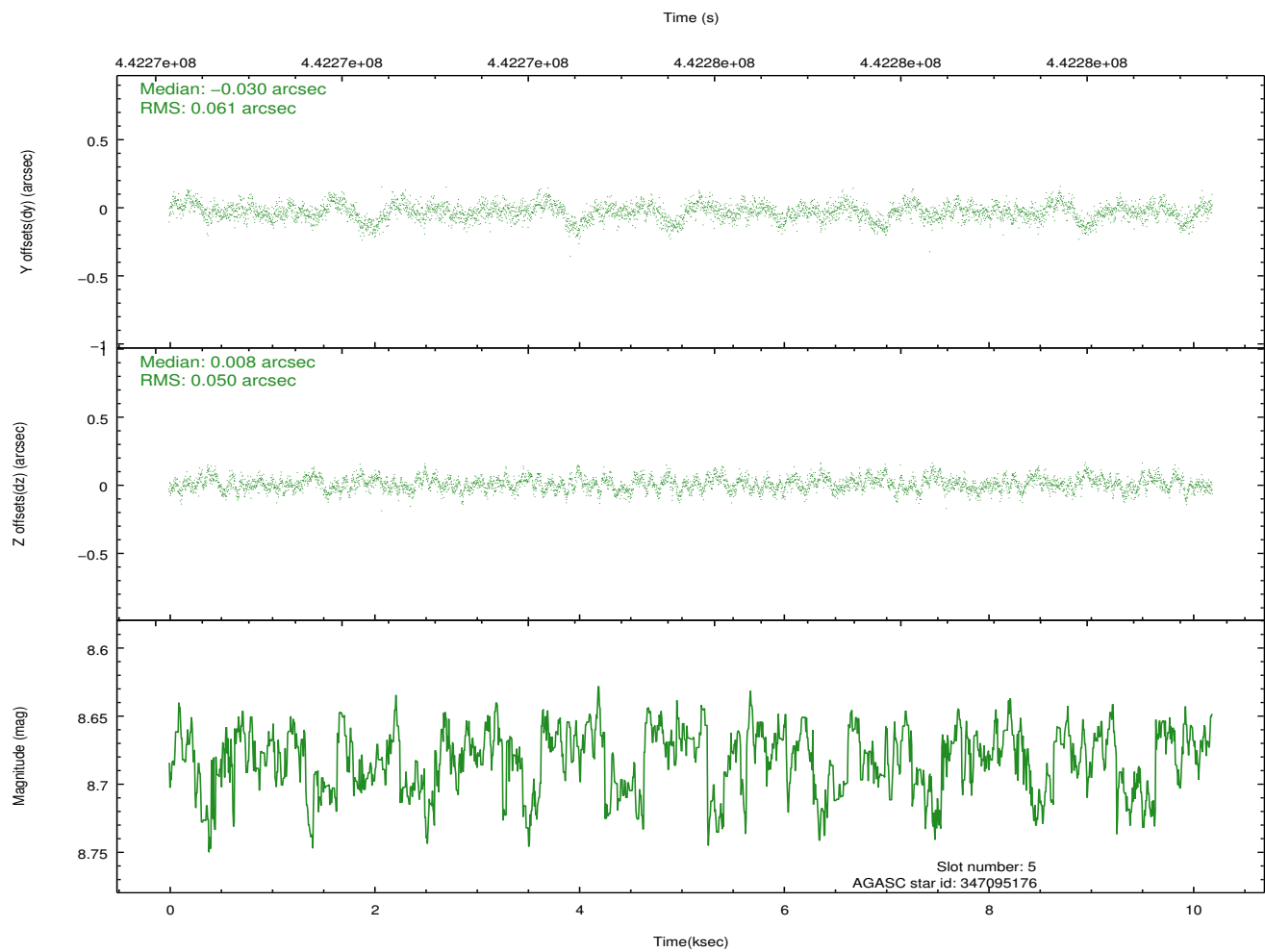
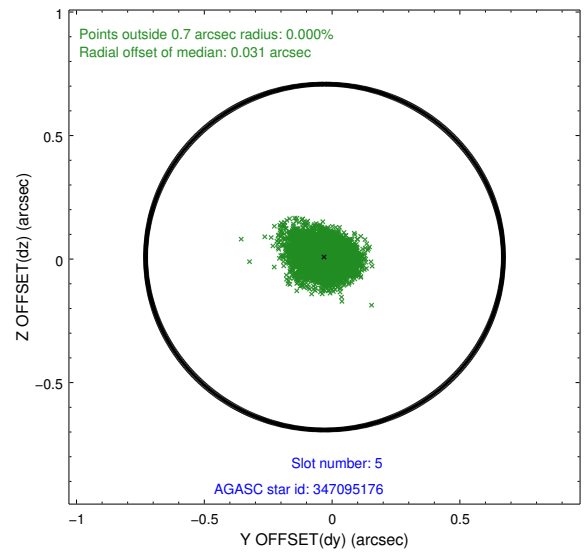
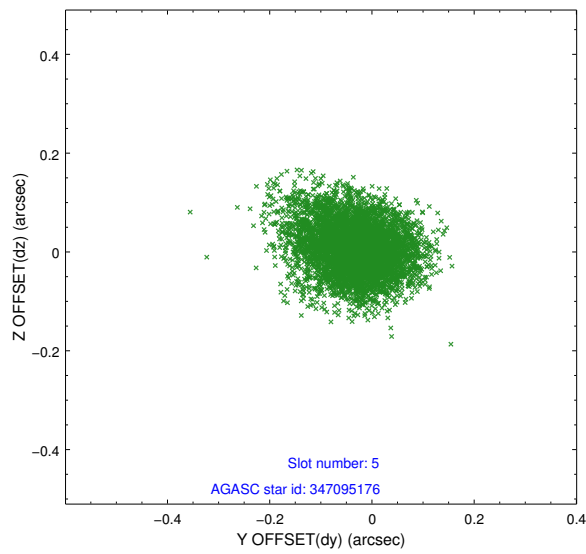
### 2.4.1 Slot 3



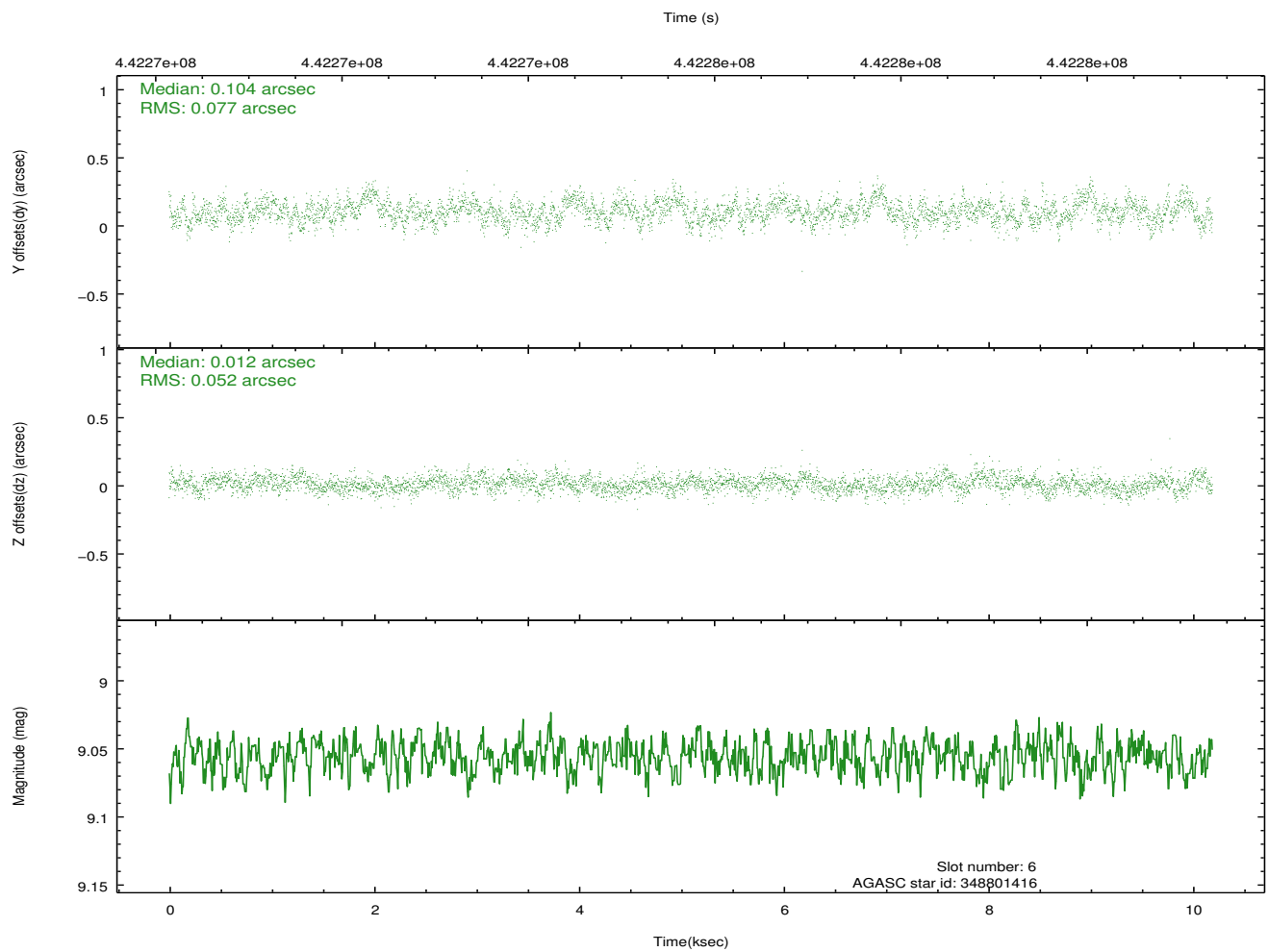
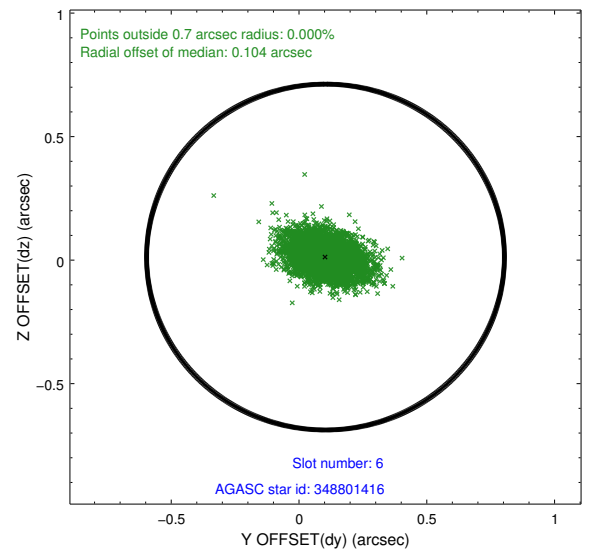
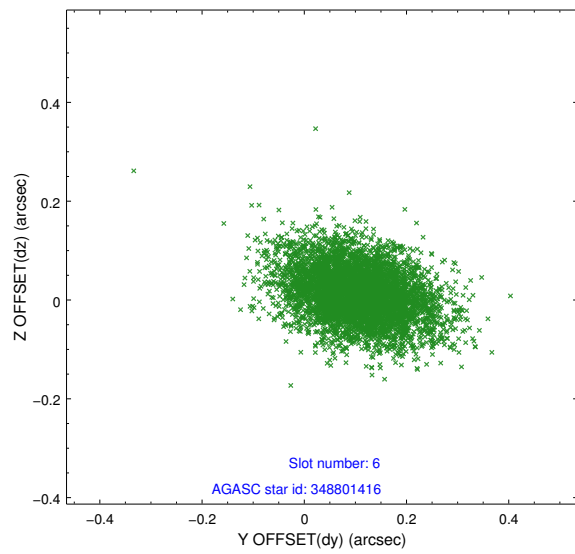
### 2.4.2 Slot 4



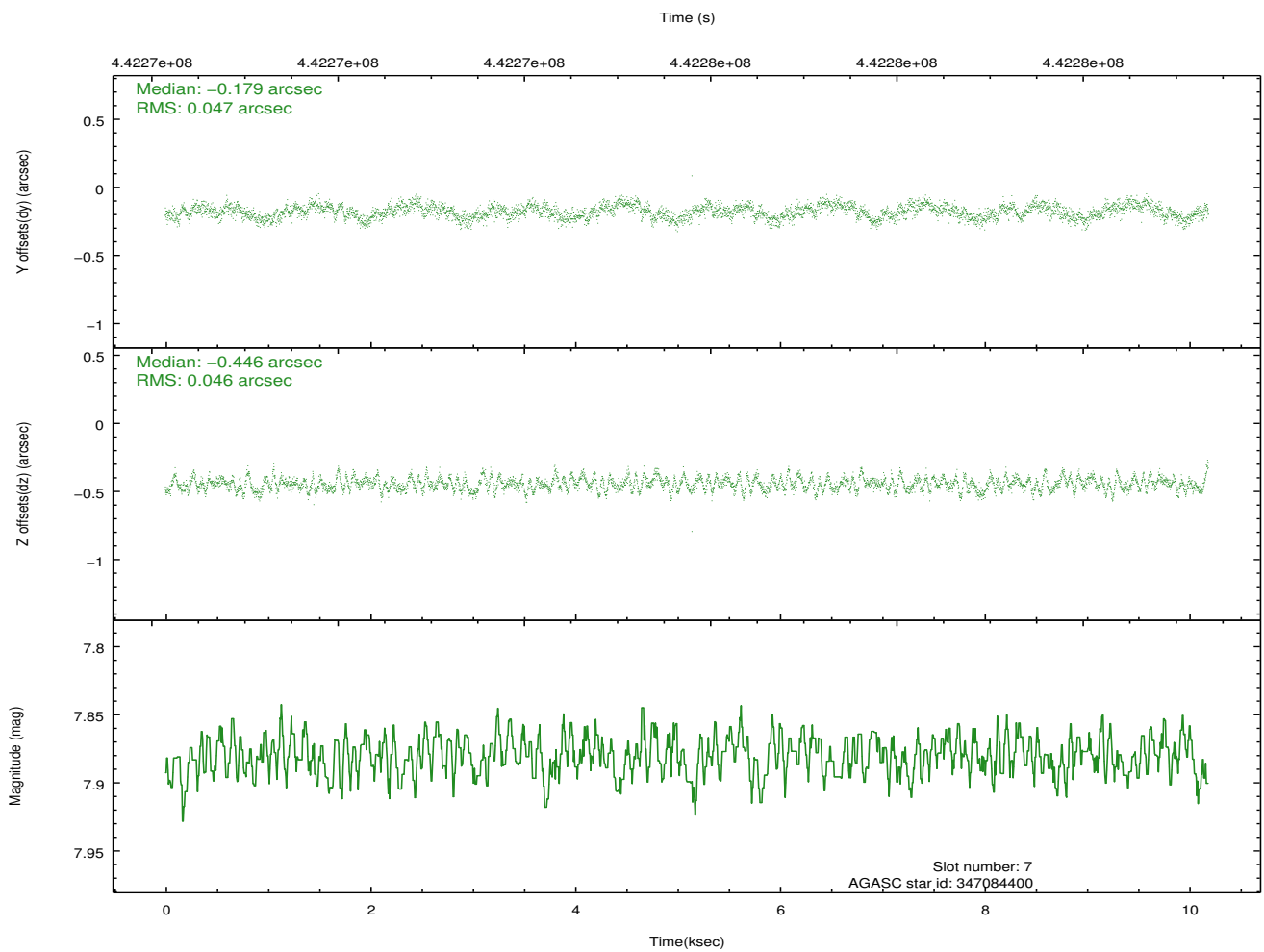
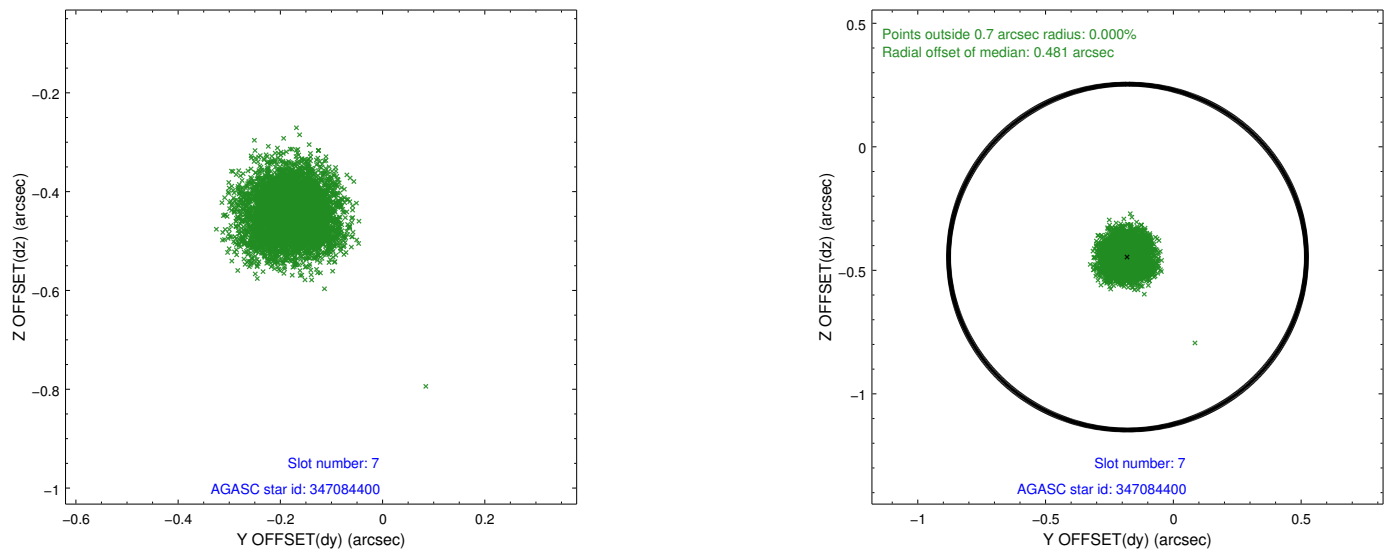
### 2.4.3 Slot 5



## 2.4.4 Slot 6

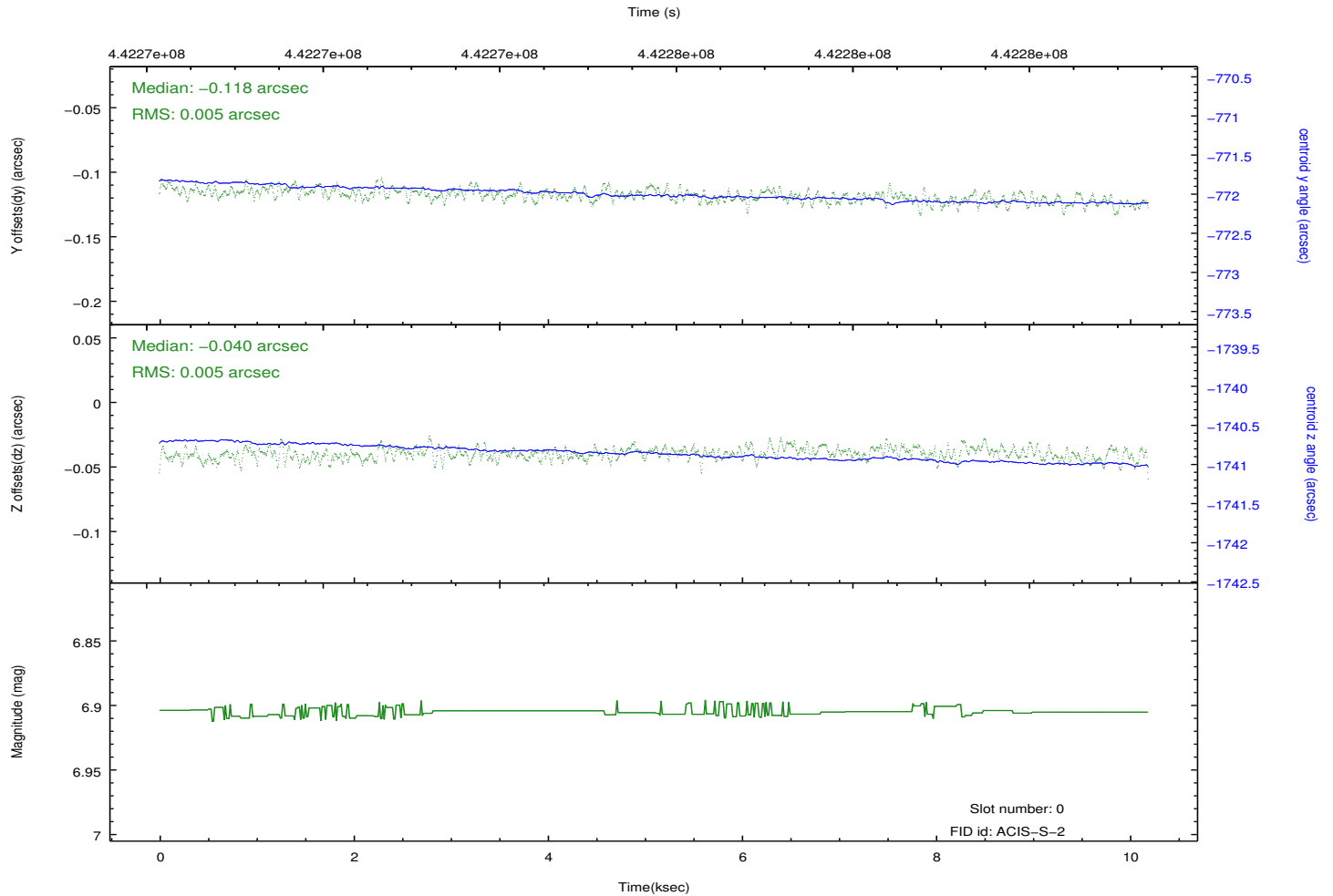
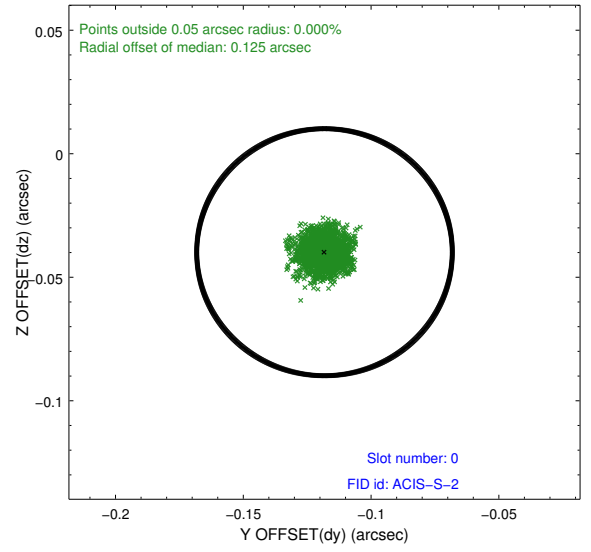
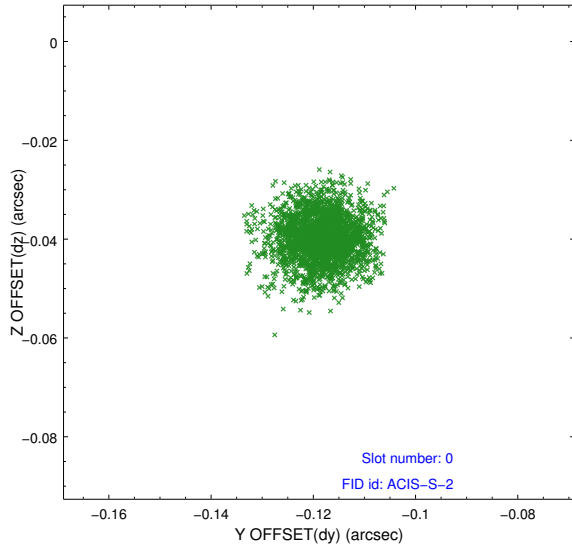


## 2.4.5 Slot 7

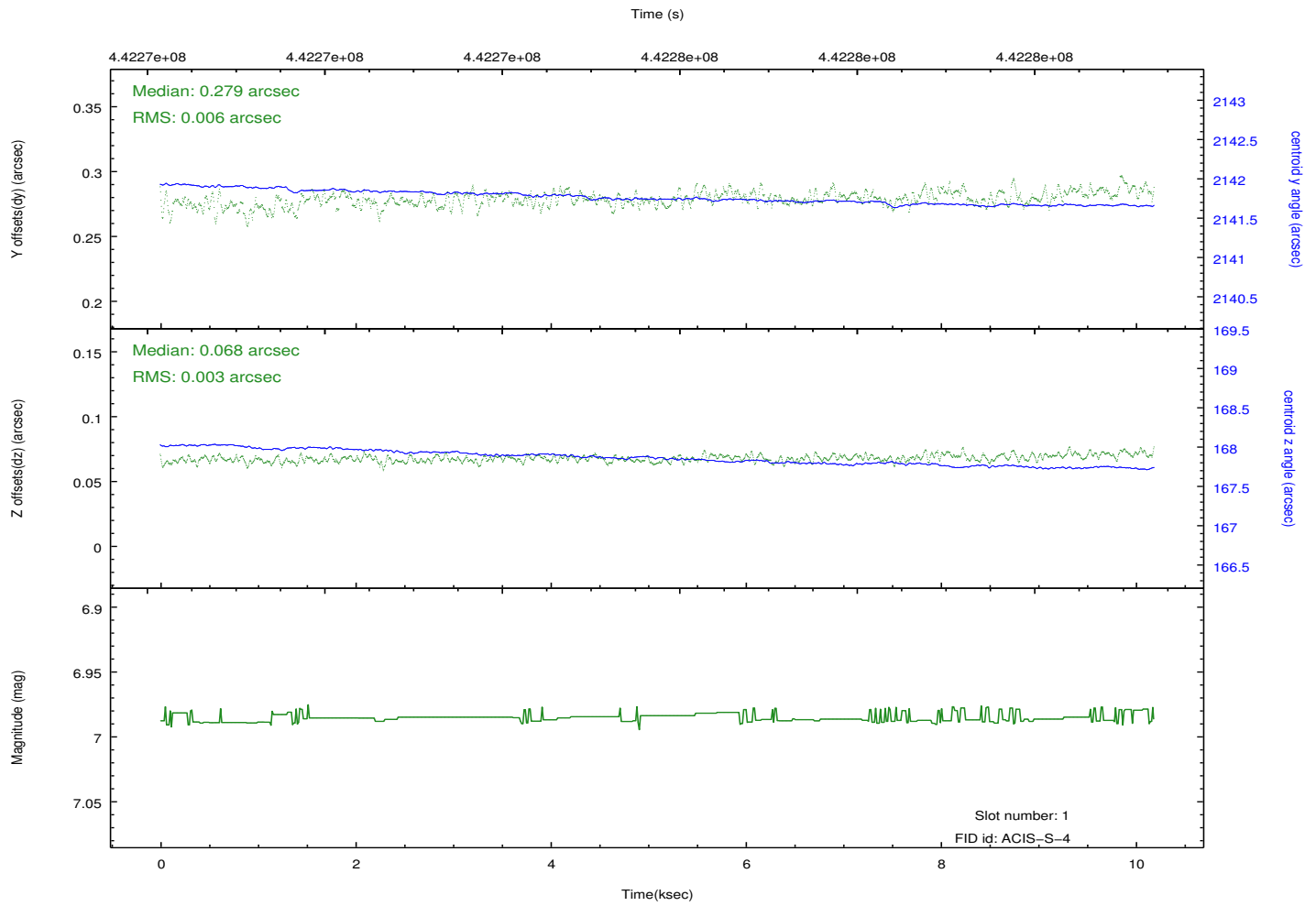
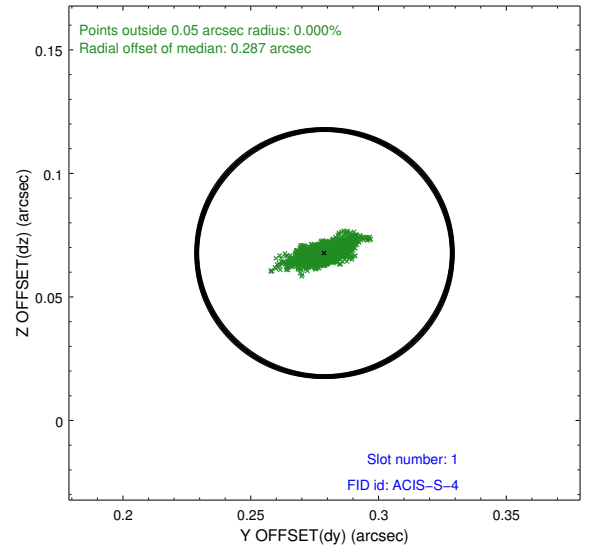
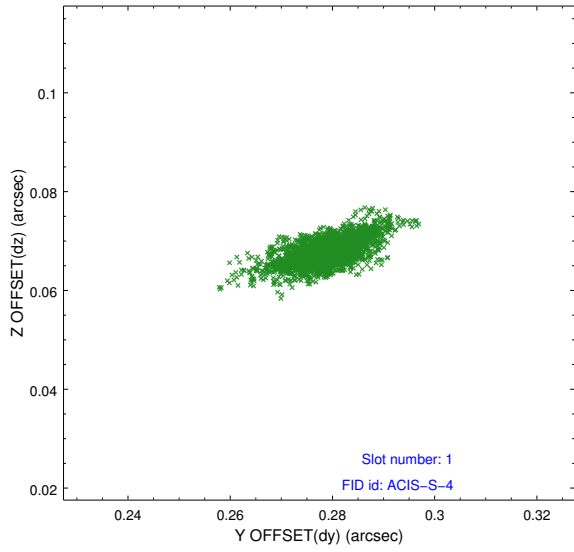


## 2.5 FID Slots

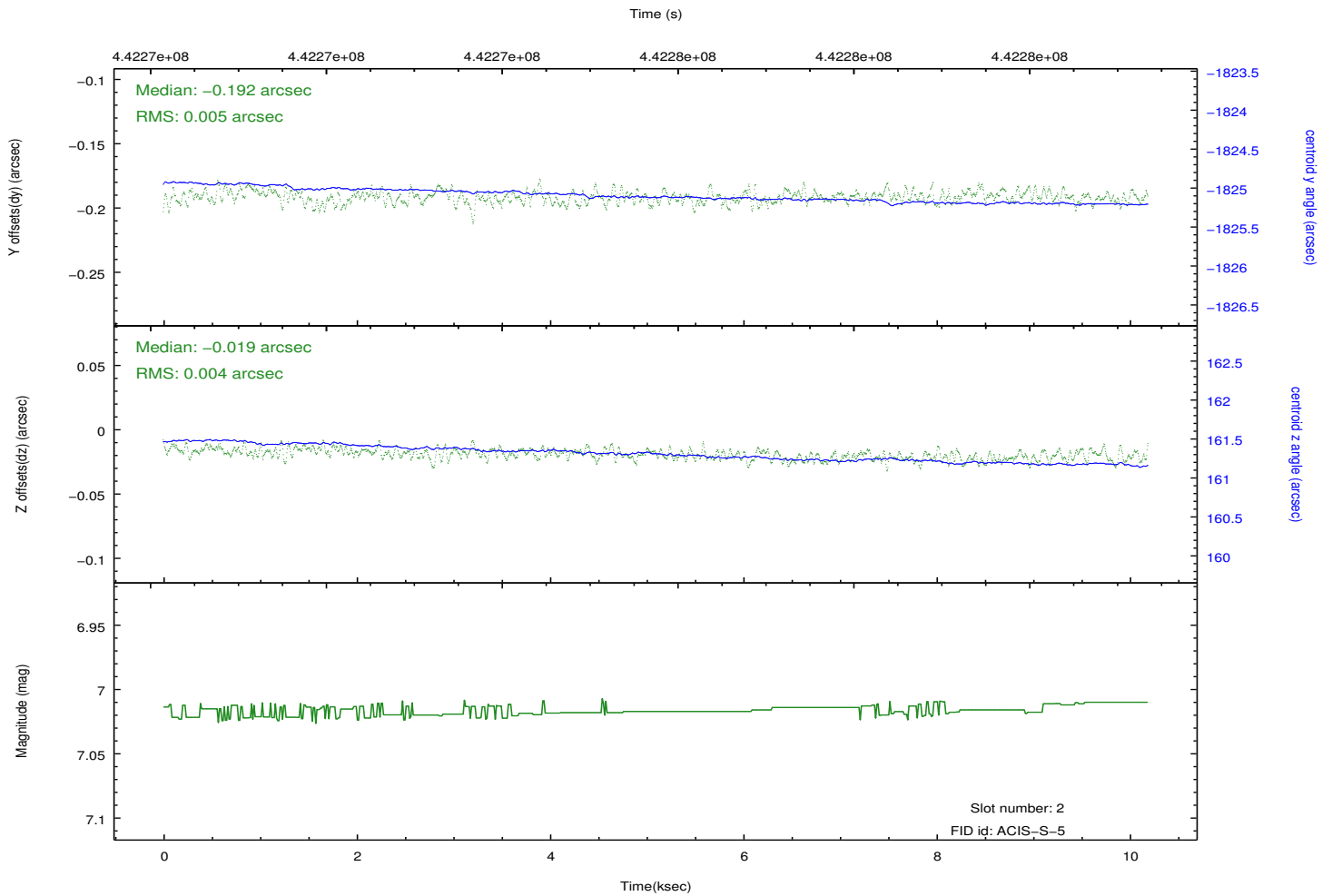
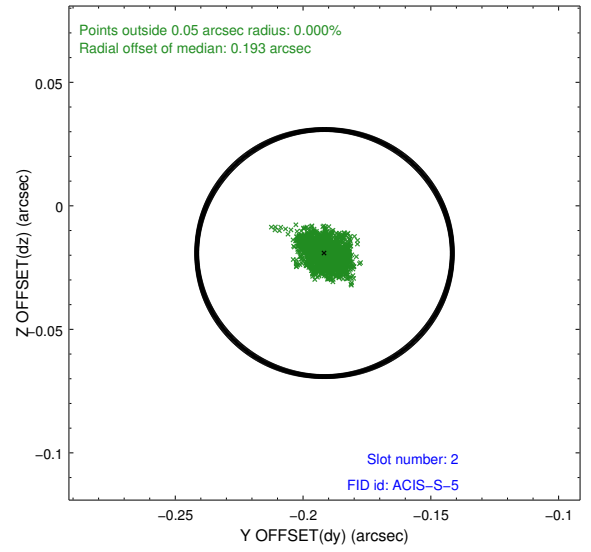
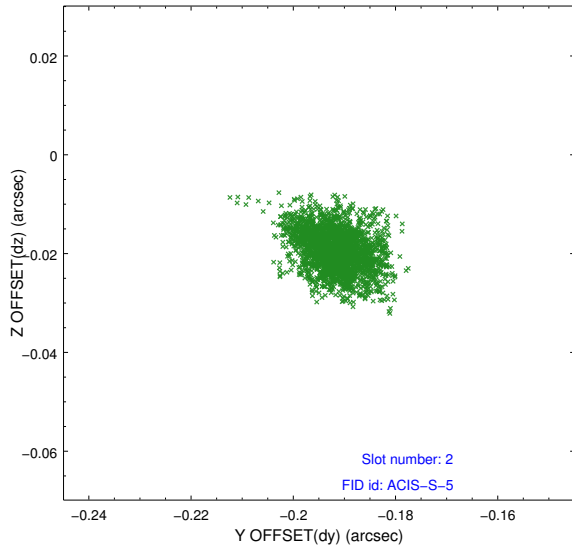
### 2.5.1 Slot 0



## 2.5.2 Slot 1



### 2.5.3 Slot 2



# A Summary

## A.1 Status

V&V Scientist	Beth Sundheim
V&V Date (YYYY-MM-DD)	2012.01.08
V&V Edition	1
V&V Disposition and Status	OK
V&V Charge Time	10.049263078451

## A.2 Comments