

V&V Reference Report

L2 ASCDS Version : 8.4.3

Observation 13989 - L2 Version 3
Chandra X-Ray Center

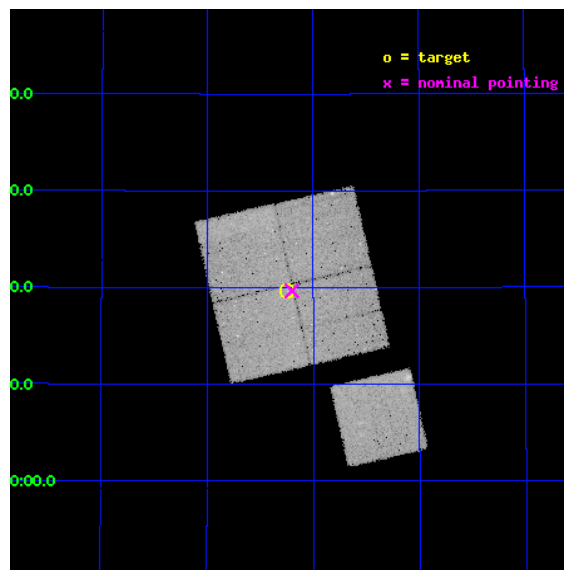
L2 Processing Date : Feb 26 2012

Contents

1	Front	2
2	OBI	3
2.1	OBI	3
2.1.1	Images	3
2.1.2	Bias	3
2.1.3	Parameters	4
2.1.4	Events	4
2.2	Compared Parameters	5
2.3	Aspect	6
2.4	Star Slots	9
2.4.1	Slot 3	9
2.4.2	Slot 4	10
2.4.3	Slot 5	11
2.4.4	Slot 6	12
2.4.5	Slot 7	13
2.5	FID Slots	14
2.5.1	Slot 0	14
2.5.2	Slot 2	15
A	Summary	16
A.1	Status	16
A.2	Comments	16

1 Front

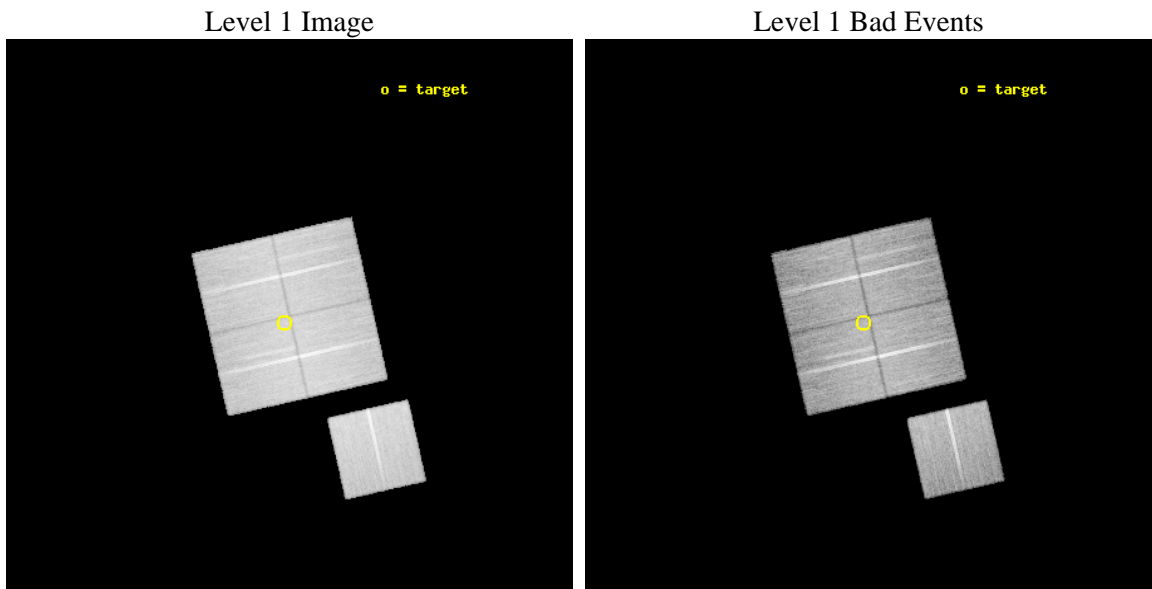
seq_num	801169	Sequence number
obs_id	13989	Observation id
title	Imaging gas clumping in the outskirts of nearby clusters of galaxies	
observer	Dr. Aurora Simionescu	Principal investigator
object	Perseus_NWclumping1	Source name
dtcycle	0	
cycle	P	events from which exps? Prim/Second/Both
ra_targ	49.31125	Observer's specified target RA [deg]
dec_targ	42.3285	Observer's specified target Dec [deg]
ra_nom	49.300362731804	Nominal RA [deg]
dec_nom	42.327865189	Nominal Dec [deg]
roll_nom	167.21600902181	Nominal Roll [deg]
revision	3	Processing version of data
ontime	38743.290177822	Sum of GTIs [s]
livetime	38237.080569254	Livetime [s]
ontime0	38740.026017547	Sum of GTIs [s]
ontime1	38740.067097485	Sum of GTIs [s]
ontime2	38740.108097553	Sum of GTIs [s]
ontime3	38743.290177822	Sum of GTIs [s]
ontime6	38736.843947291	Sum of GTIs [s]
l2events	126575	Number of level 2 events



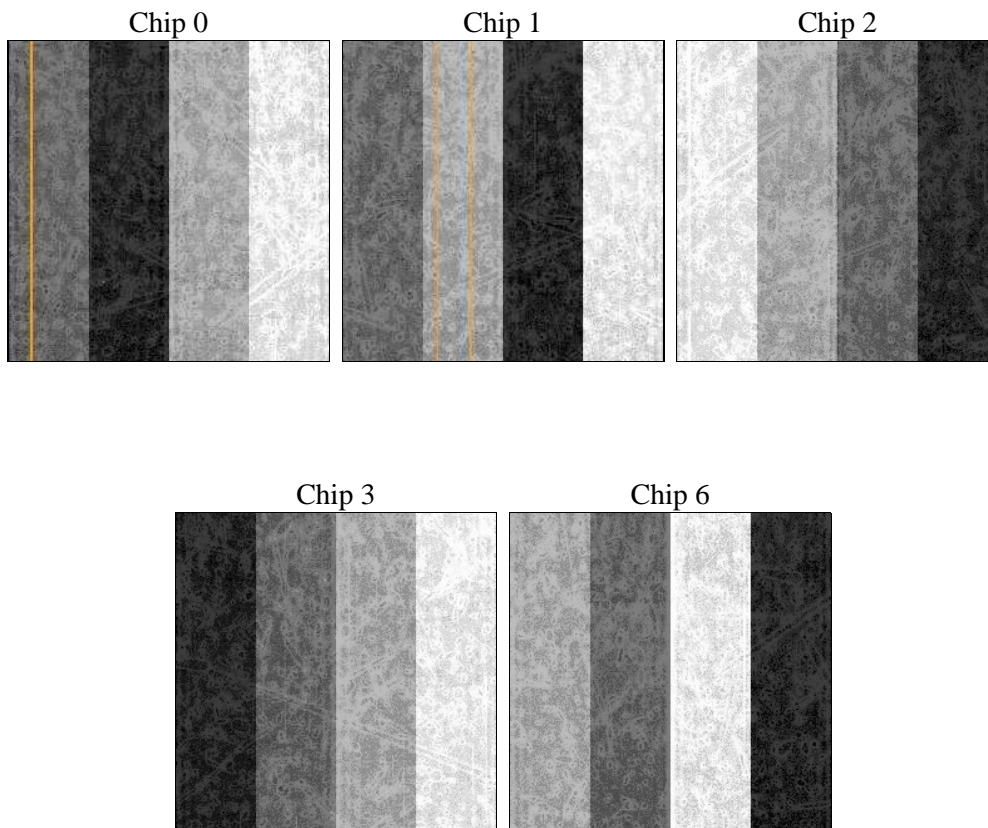
2 OBI

2.1 OBI

2.1.1 Images



2.1.2 Bias



2.1.3 Parameters

obi_num	0	Obi number	sched_exp_time	38685.328000	[s] Scheduled observation exposure time
ascdsver	8.4.3	Processing system revision	ontime	38743.290177822	Sum of GTIs [s]
caldbver	4.4.8	 	ontime0	38740.026017547	Sum of GTIs [s]
date	2012-02-26T22:58:55	Date and time of file creation	ontime1	38740.067097485	Sum of GTIs [s]
revision	3	Processing version of data	ontime2	38740.108097553	Sum of GTIs [s]
			ontime3	38743.290177822	Sum of GTIs [s]
			ontime6	38736.843947291	Sum of GTIs [s]
			l1events	1175072	Number of level 1 events

2.1.4 Events

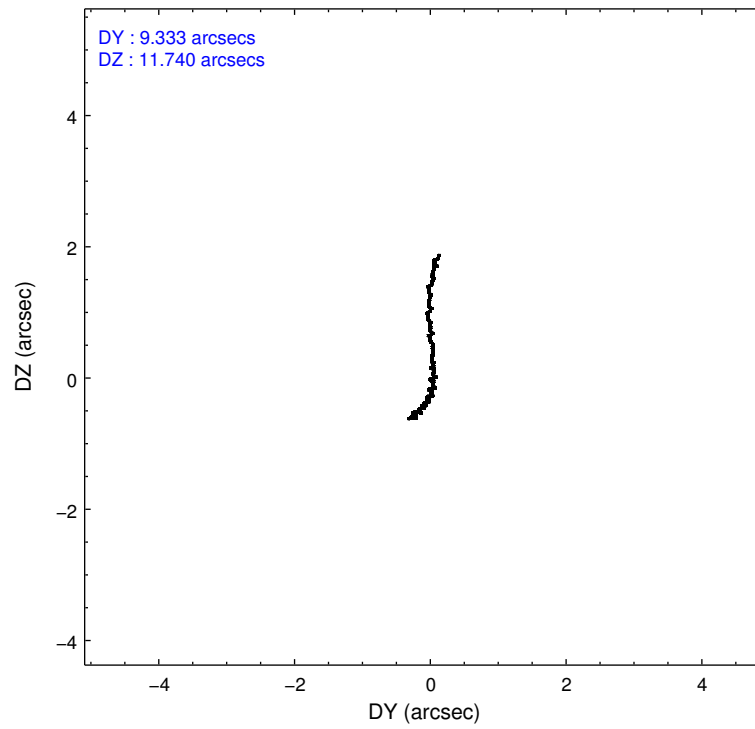
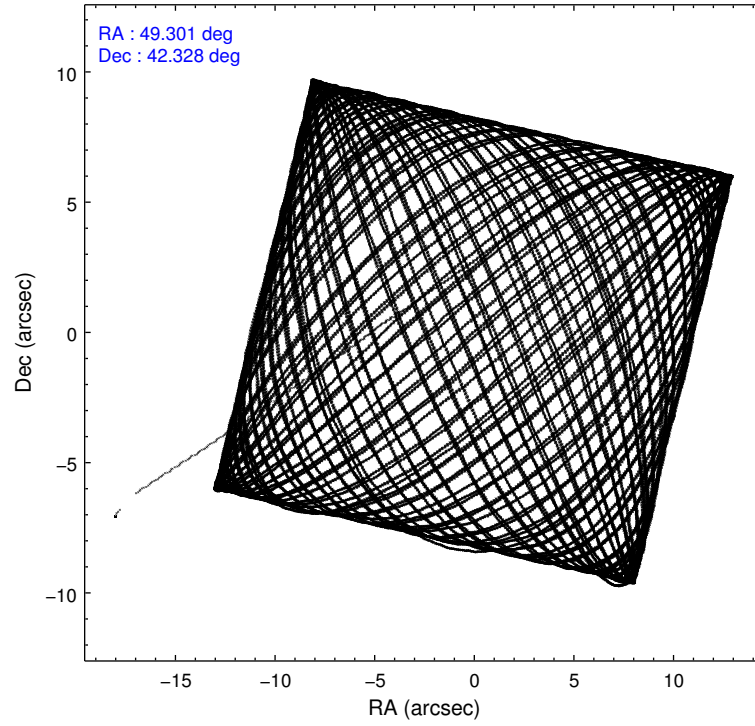
	ccd 0	ccd 1	ccd 2	ccd 3	ccd 6
level 1 events	221472	225511	244960	238089	245040
rejected events	192515	193310	216336	209953	214446
rejected %	86%	85%	88%	88%	87%

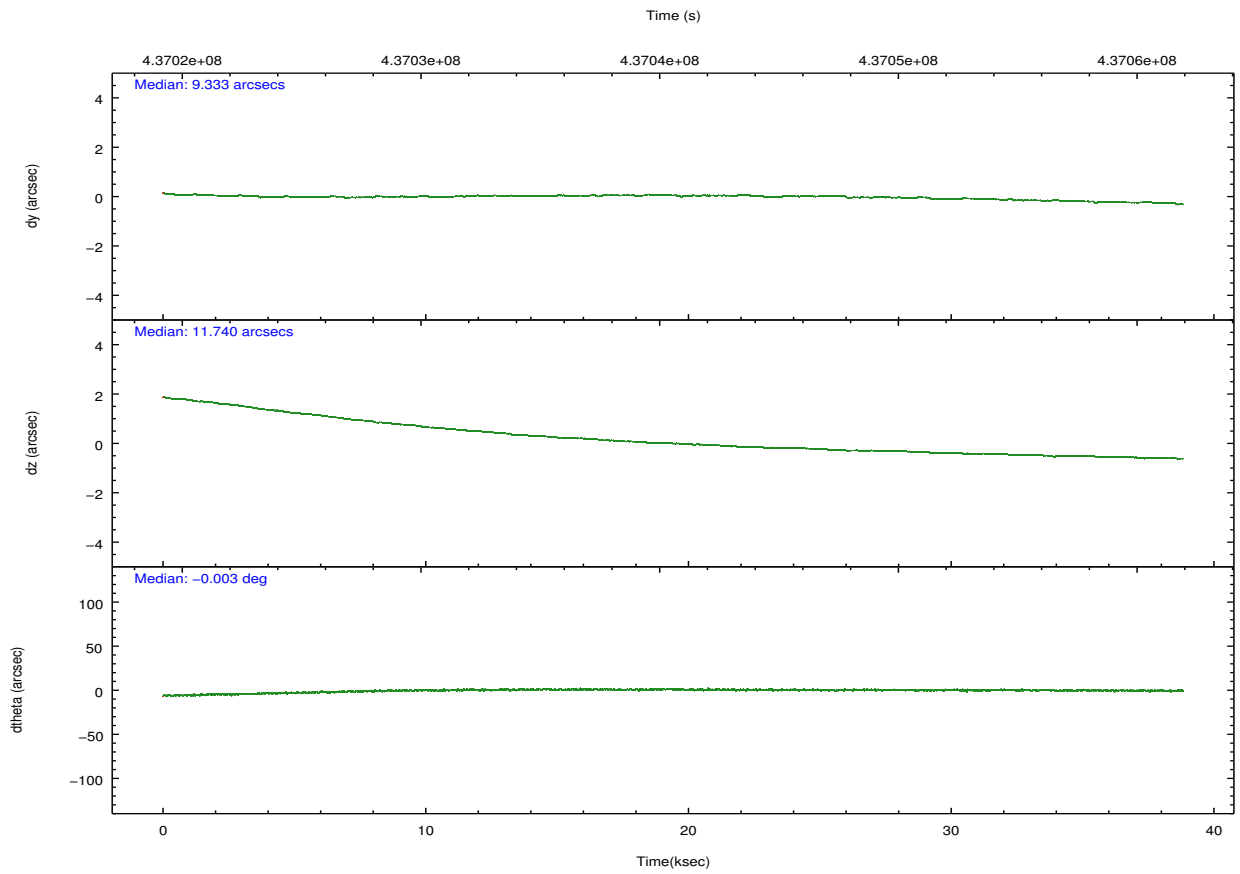
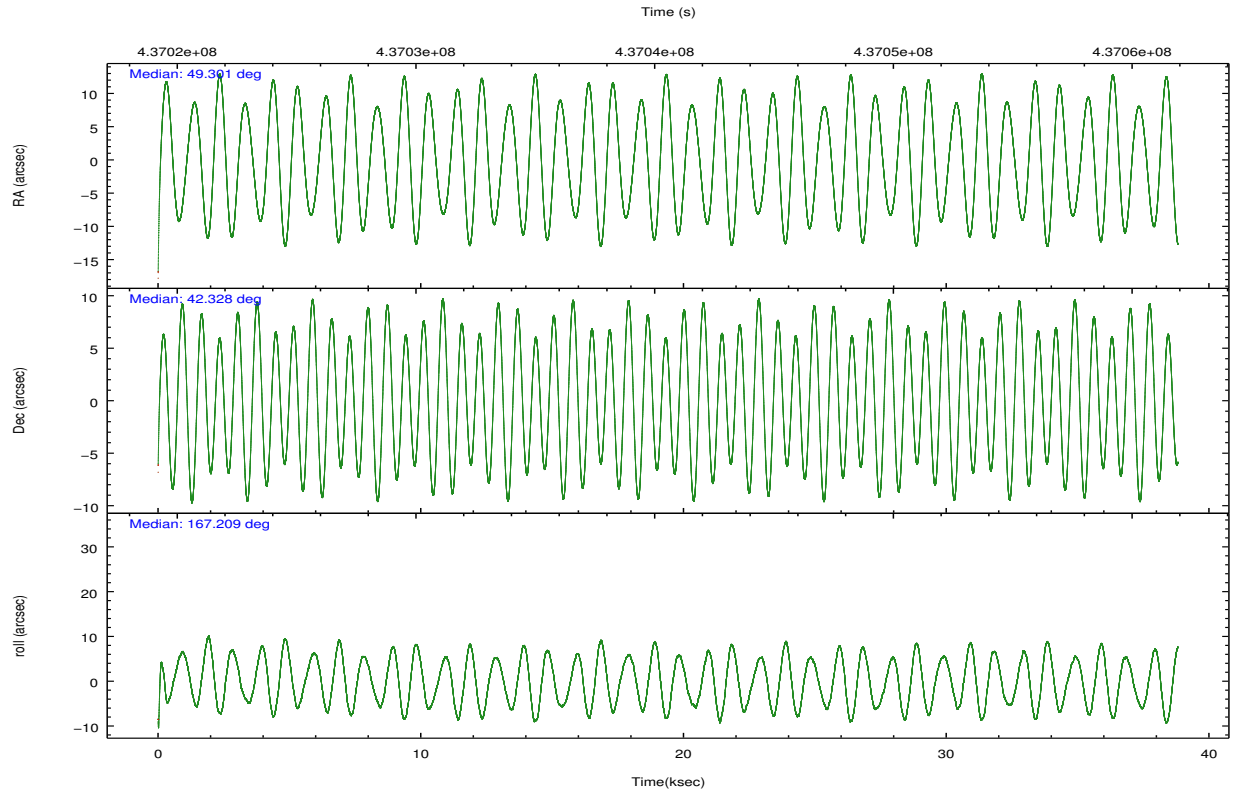
	ccd 0	ccd 1	ccd 2	ccd 3	ccd 6
grade 0 events	10781	12218	10910	10930	11977
	4%	5%	4%	4%	4%
grade 1 events	148	147	149	151	125
	0%	0%	0%	0%	0%
grade 2 events	6726	7293	6845	5993	6444
	3%	3%	2%	2%	2%
grade 3 events	2921	3108	2804	2906	2968
	1%	1%	1%	1%	1%
grade 4 events	2793	3042	2775	2884	3018
	1%	1%	1%	1%	1%
grade 5 events	10506	11197	10126	11914	11797
	4%	4%	4%	5%	4%
grade 6 events	5737	6547	5290	5427	6189
	2%	2%	2%	2%	2%
grade 7 events	181860	181959	206061	197884	202522
	82%	80%	84%	83%	82%

2.2 Compared Parameters

Parameter	Planned	Actual	Parameter	Planned	Actual
Instrument	ACIS	ACIS	Obspar format version number	7	7
Detector	ACIS-01236	ACIS-01236	Obspar file type	PREDICTED	ACTUAL
Grating	NONE	NONE	Obspar update status	NONE	UPDATED
Data mode	VFAINT	VFAINT	CCD I0 on	Y	Y
Observation mode	POINTING	POINTING	CCD I1 on	Y	Y
[deg] Pointing RA	49.335828	49.30036273180416	CCD I2 on	Y	Y
[deg] Pointing Dec	42.336100	42.32786518900013	CCD I3 on	Y	Y
[deg] Pointing Roll	166.983449	167.2160090218113	CCD S0 on	N	N
[mm] SIM focus pos	-0.782348	-0.7809083437167272	CCD S1 on	N	N
[mm] SIM defocus	0	0.001439871863259334	CCD S2 on	O2	Y
[mm] SIM translation stage pos	-233.592463	-233.5874344608287	CCD S3 on	O1	N
[mm] SIM translation stage offset	0	-0.005018542100998502	CCD S4 on	N	N
[s] Observation start time (MET)	437021287.184000	437020152.45818	CCD S5 on	N	N
Observation start date	2011-11-07T02:47:01	2011-11-07T02:29:12	Number of optional ACIS chips dropped	1	1
[s] Observation end time (MET)	437059973.184000	437060209.97279	On-chip summing requested	N	N
Observation end date	2011-11-07T13:31:47	2011-11-07T13:36:49	Subarray requested	NONE	NONE
Read mode	TIMED	TIMED	Alternating exposures requested	N	N
			[s] Primary exposure time	0.000000	3.1

2.3 Aspect



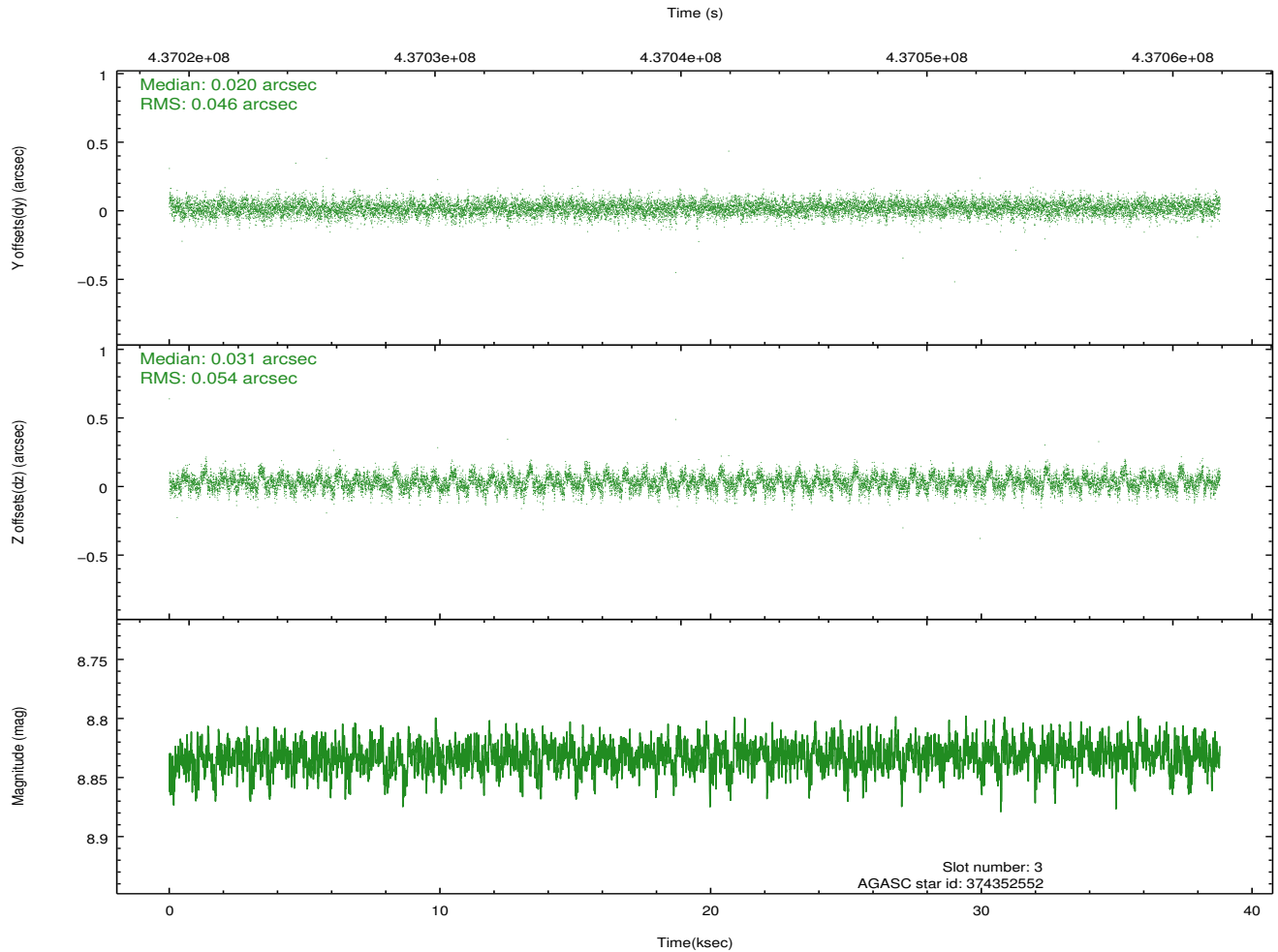
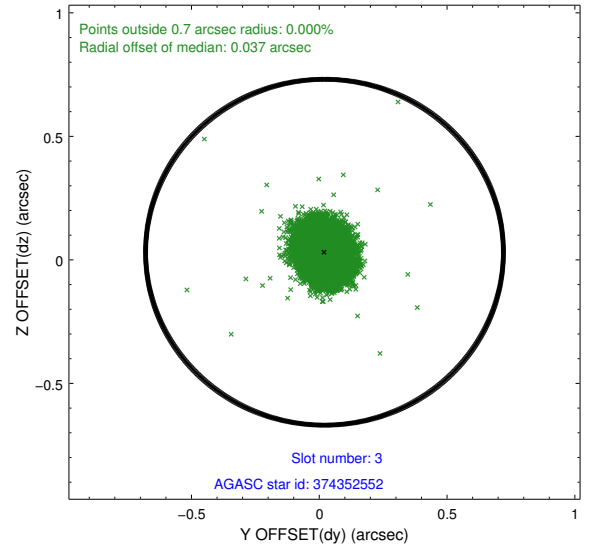
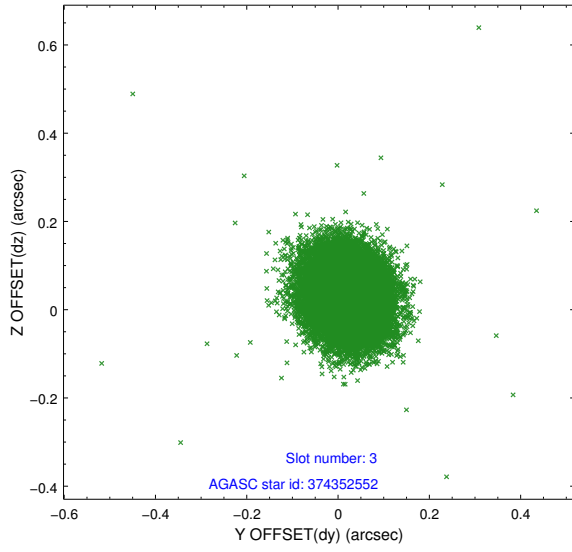


Slot Statistics

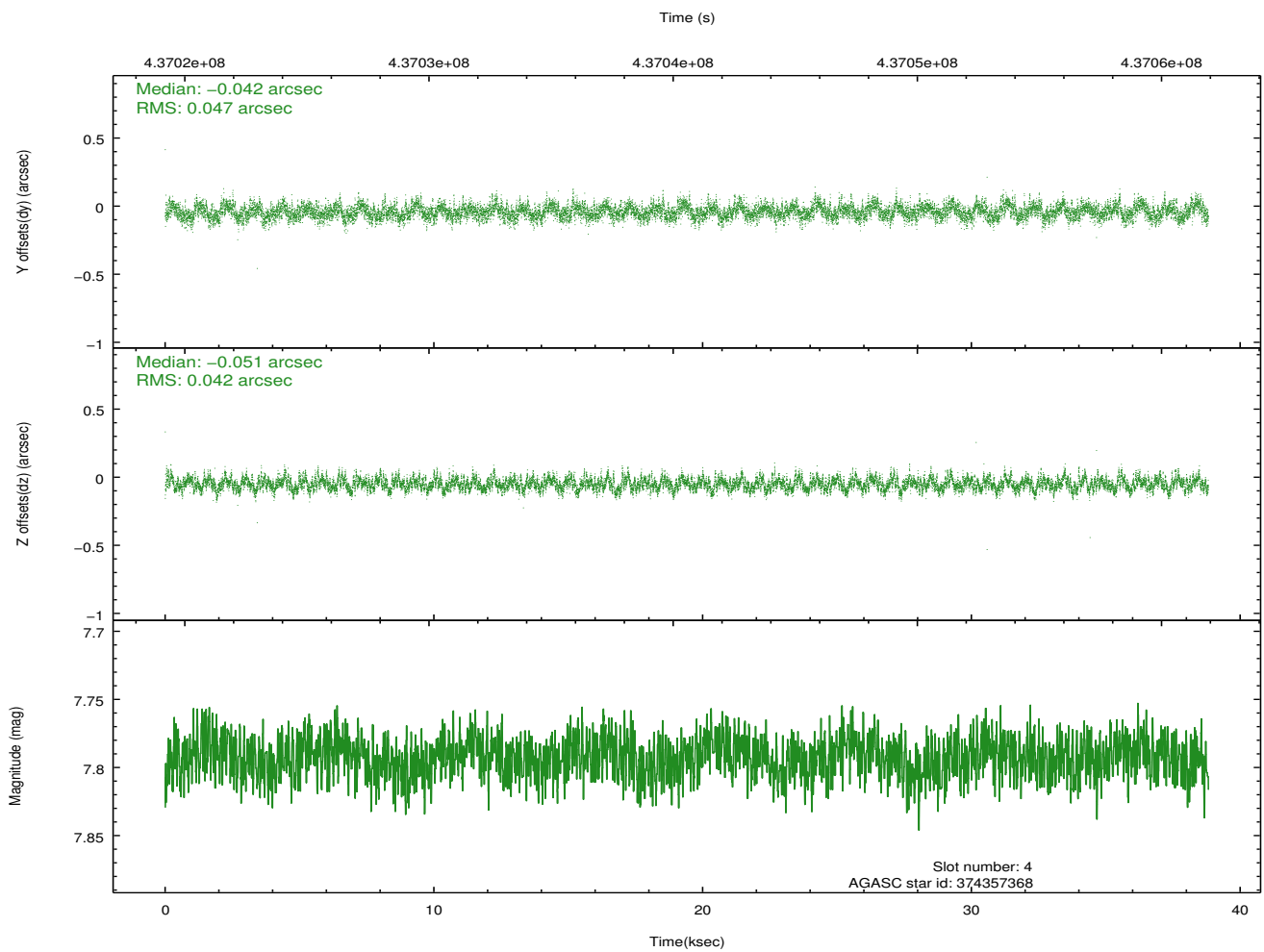
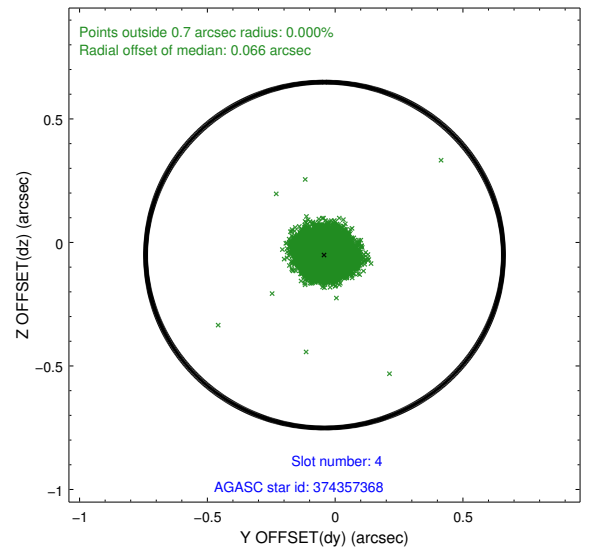
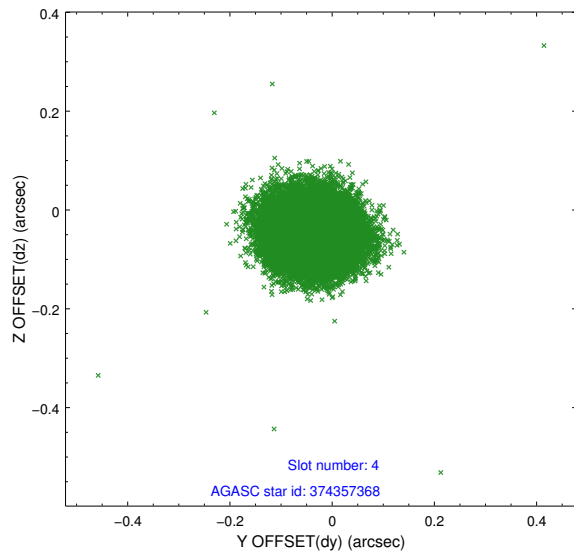
slot	status	id	mag	n_pts	med_dy	med_dz	dr1	dr2	ra	dec	mean_y	mean_z
0	FID	ACIS-I-1	7.06	9468	0.129	-0.085	0.009	0.018	0.000000	0.000000	930.46	-835.55
1	OMITTED		0.00	0	0.000	0.000	0.000	0.000	0.000000	0.000000	0.00	0.00
2	FID	ACIS-I-5	7.05	9468	-0.189	0.135	0.009	0.018	0.000000	0.000000	-1817.99	1062.10
3	GUIDE	374352552	8.83	18923	0.020	0.031	0.075	0.122	49.205176	42.496124	467.68	-482.36
4	GUIDE	374357368	7.79	18932	-0.042	-0.051	0.067	0.106	49.396079	42.675115	119.60	-1224.47
5	GUIDE	376064600	9.23	18915	0.038	0.143	0.118	0.181	50.213209	42.582691	-2062.77	-1400.03
6	GUIDE	374352808	8.74	18927	0.048	-0.131	0.079	0.128	49.969955	42.208621	-1749.19	60.32
7	GUIDE	376070040	8.40	18928	-0.062	0.007	0.077	0.137	50.072031	41.897206	-2276.09	1087.22

2.4 Star Slots

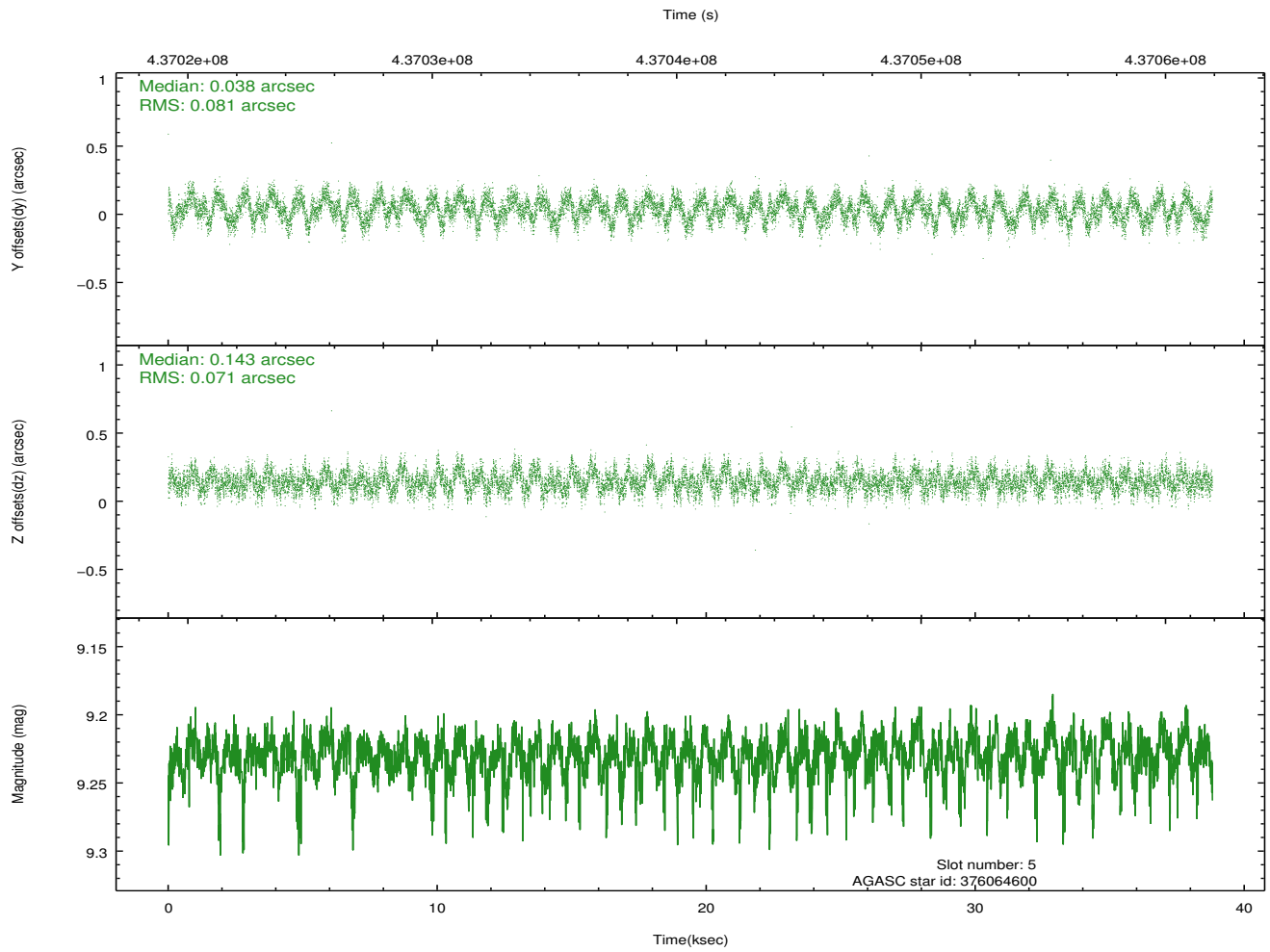
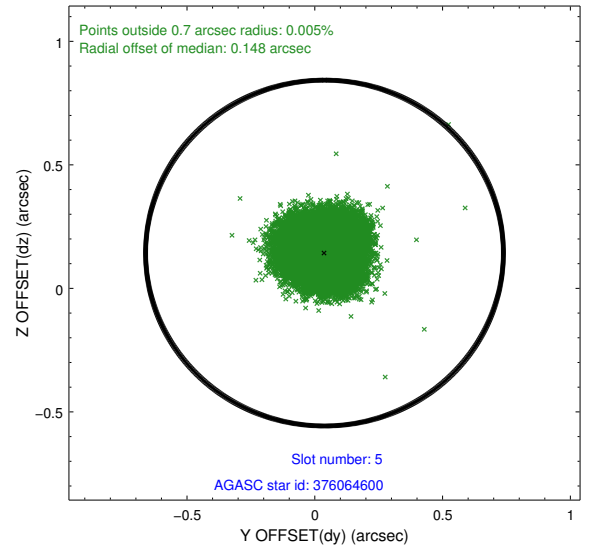
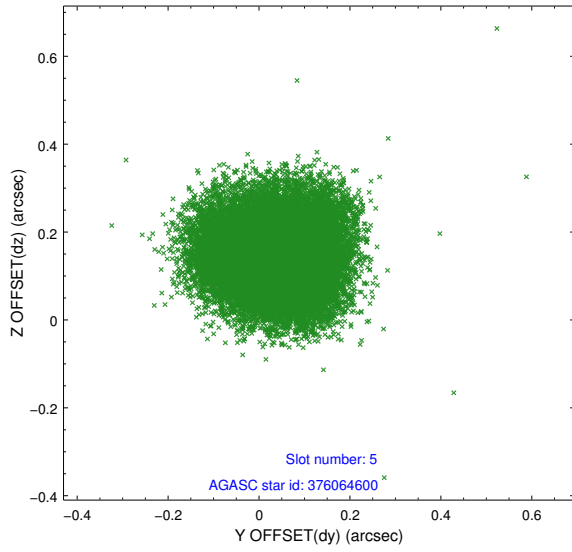
2.4.1 Slot 3



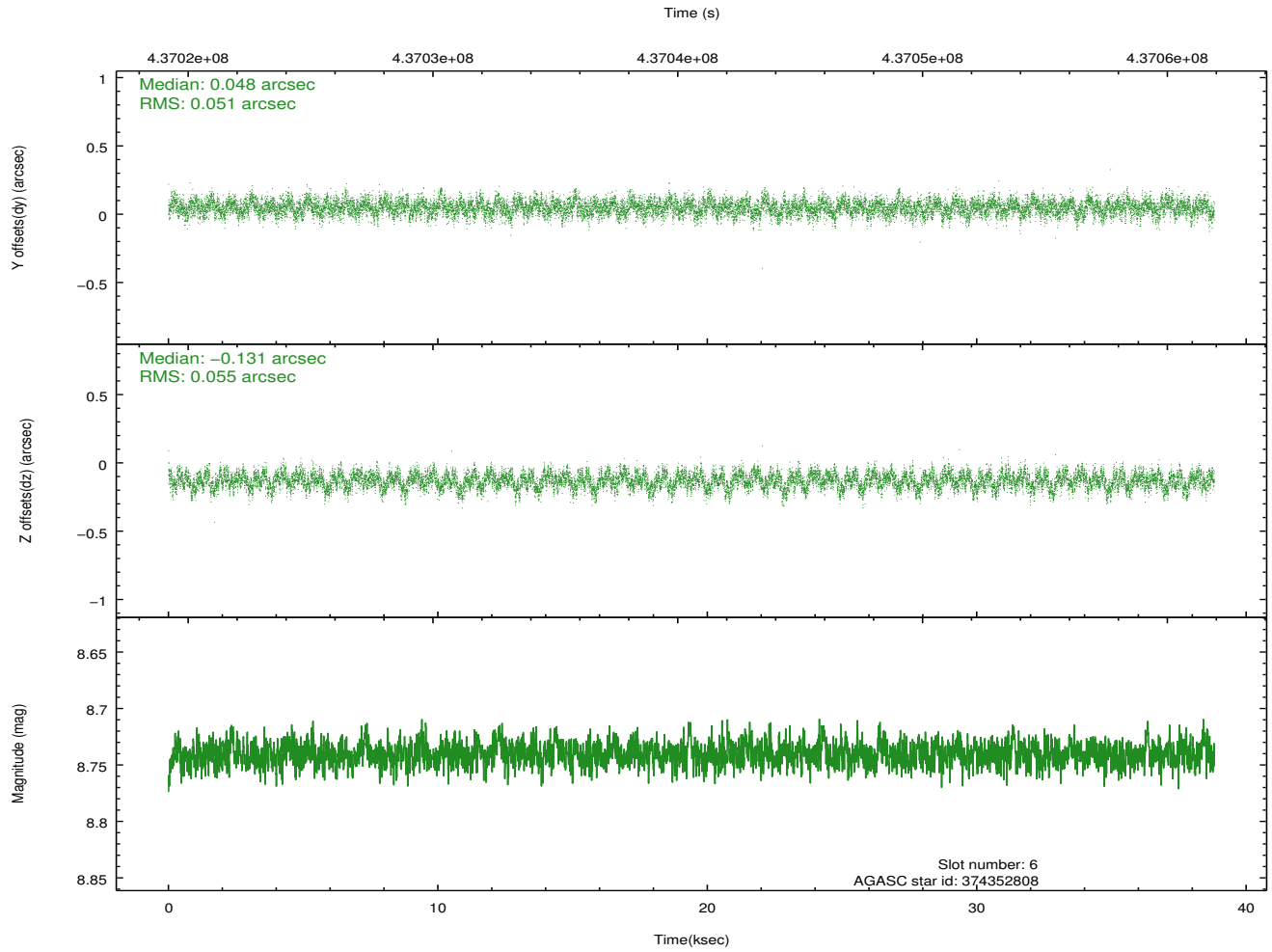
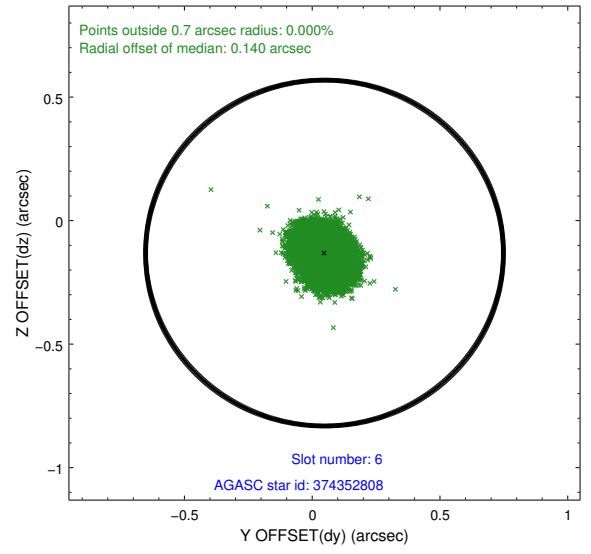
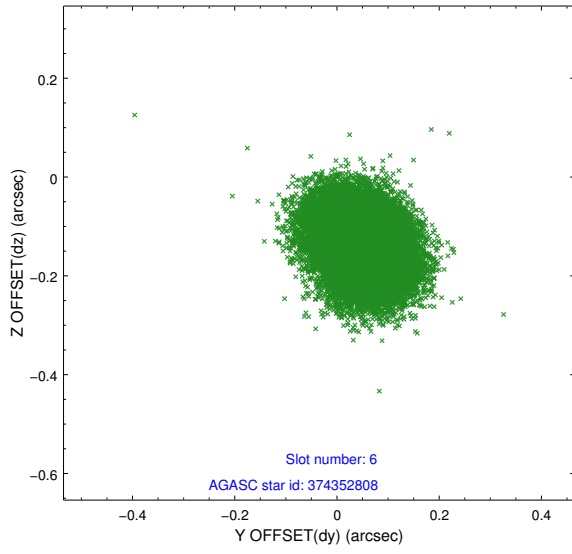
2.4.2 Slot 4



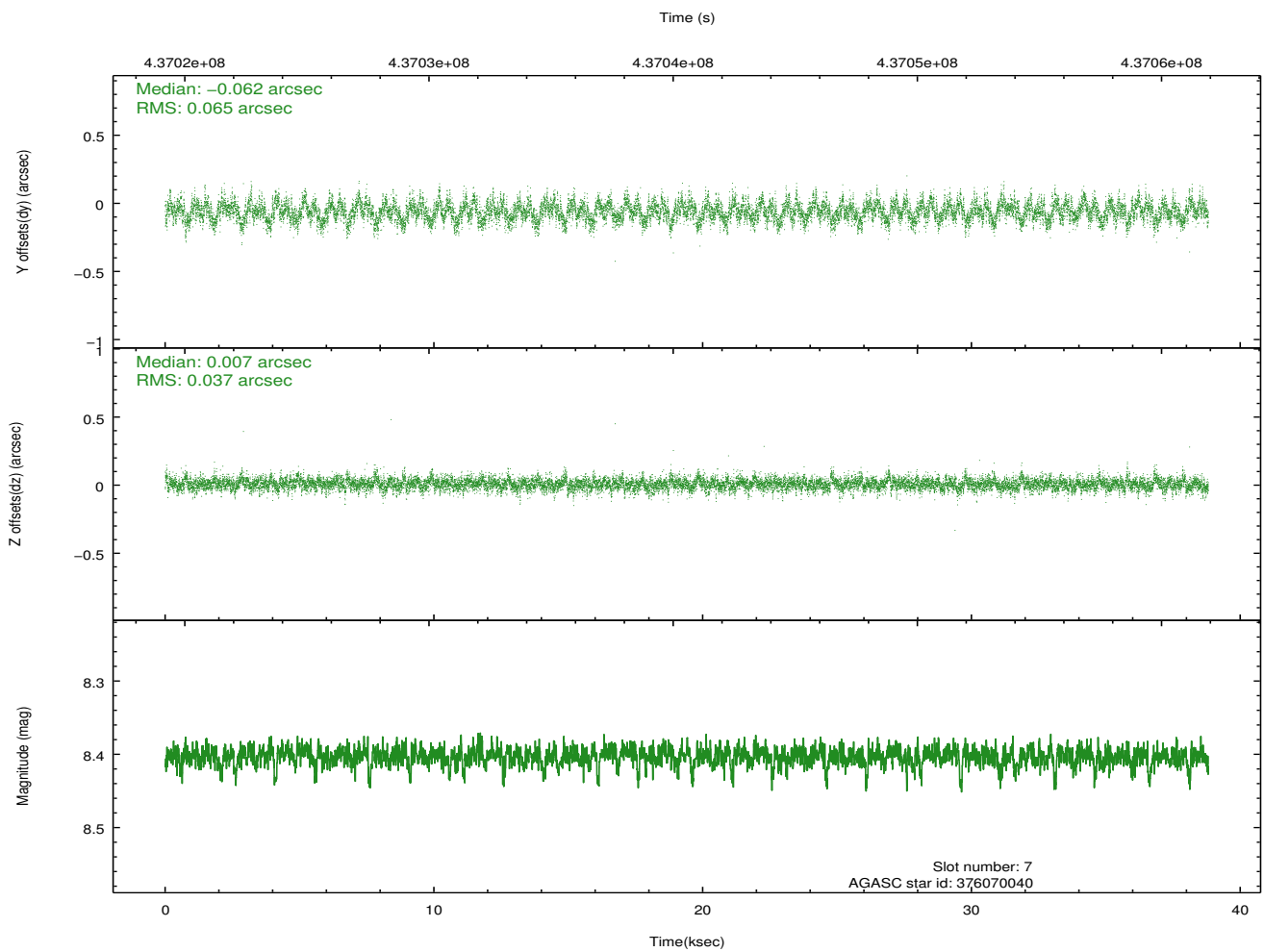
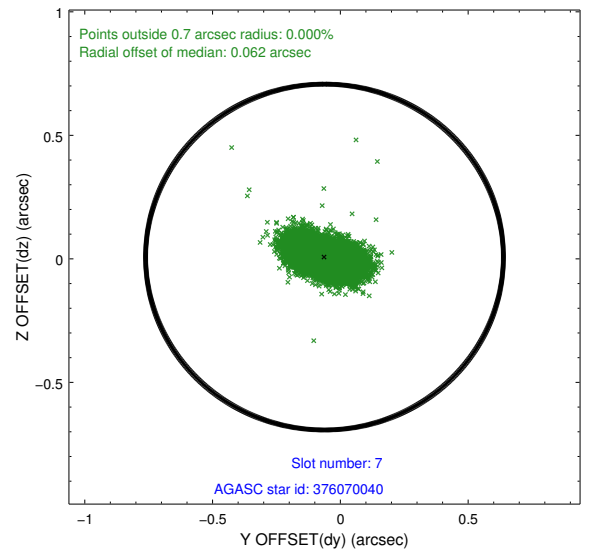
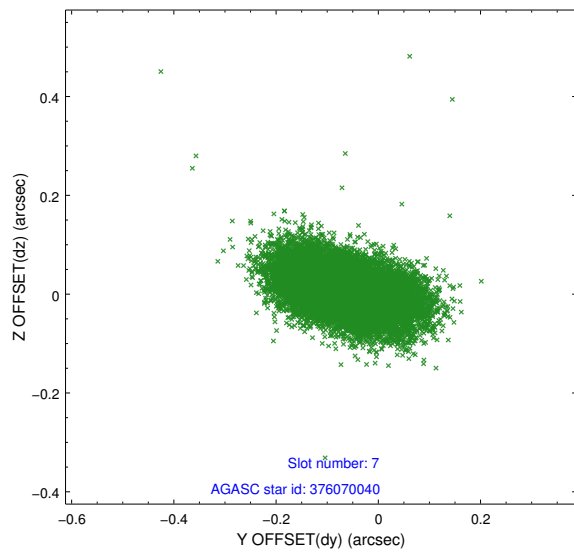
2.4.3 Slot 5



2.4.4 Slot 6

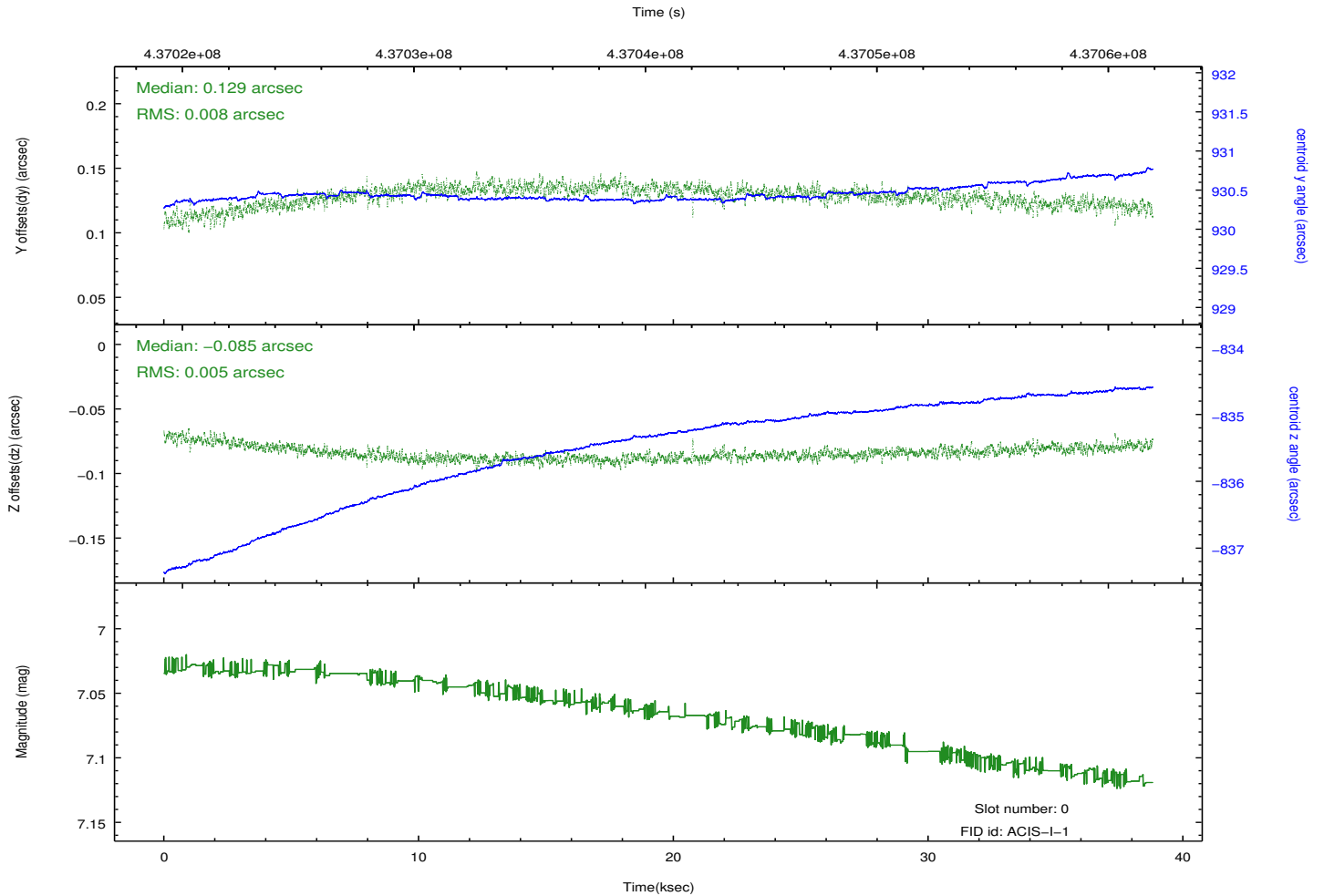
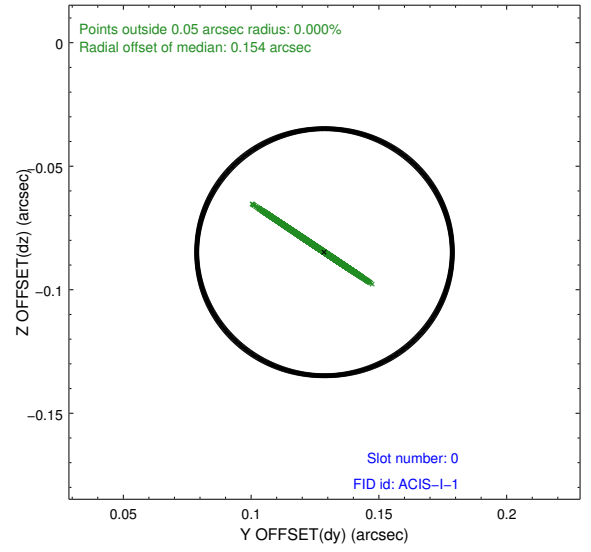
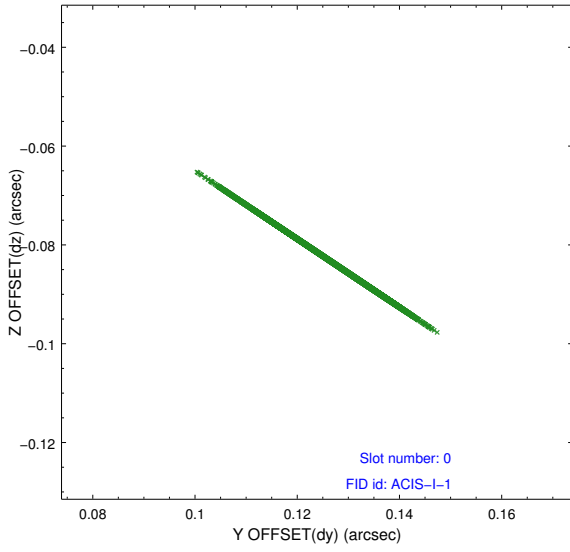


2.4.5 Slot 7

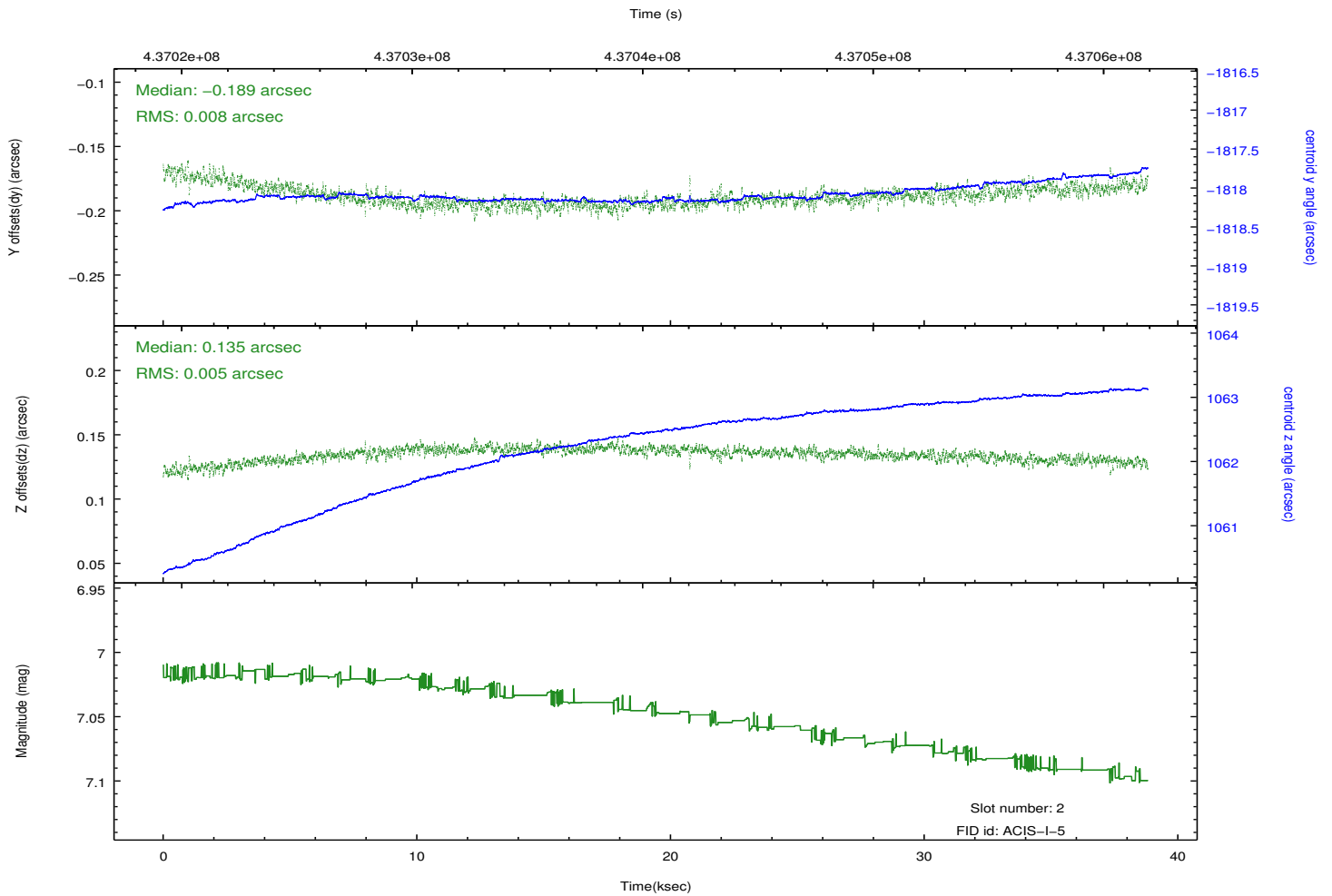
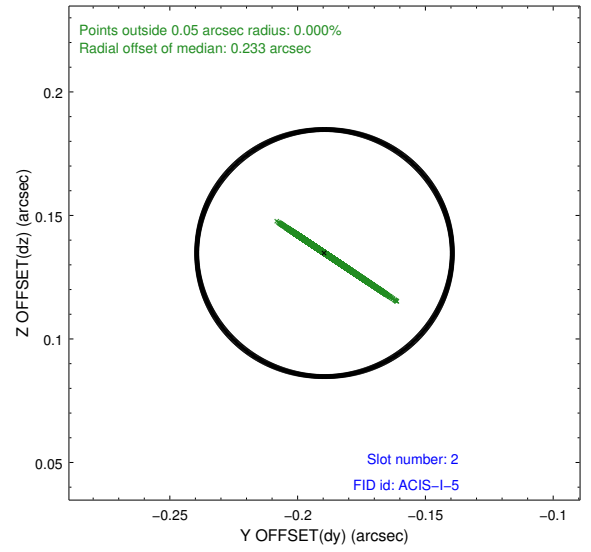
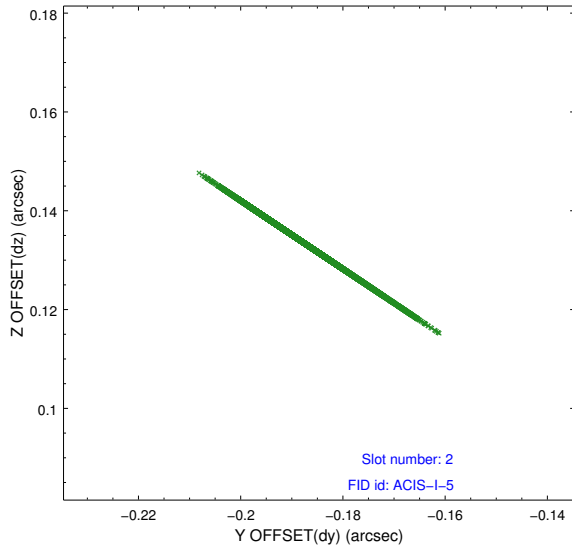


2.5 FID Slots

2.5.1 Slot 0



2.5.2 Slot 2



A Summary

A.1 Status

V&V Scientist	Jen Lauer
V&V Date (YYYY-MM-DD)	2012.02.28
V&V Edition	1
V&V Disposition and Status	OK
V&V Charge Time	38.743290180564

A.2 Comments

The fid light in slot 1 was removed from the aspect solution due to poor data quality. The aspect solution is improved by the removal of this fid light data.