

V&V Reference Report

L2 ASCDS Version : 8.4.5

Observation 14429 - L2 Version 1
Chandra X-Ray Center

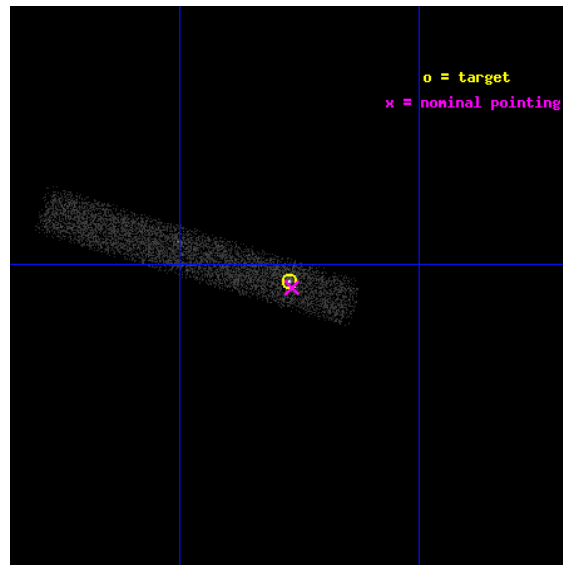
L2 Processing Date : Jun 7 2012

Contents

| | | |
|----------|-------------------------------|-----------|
| 1 | Front | 2 |
| 2 | OBI | 3 |
| 2.1 | OBI | 3 |
| 2.1.1 | Images | 3 |
| 2.1.2 | Bias | 3 |
| 2.1.3 | Parameters | 4 |
| 2.1.4 | Events | 4 |
| 2.2 | Compared Parameters | 5 |
| 2.3 | Aspect | 6 |
| 2.4 | Star Slots | 9 |
| 2.4.1 | Slot 3 | 9 |
| 2.4.2 | Slot 4 | 10 |
| 2.4.3 | Slot 5 | 11 |
| 2.4.4 | Slot 6 | 12 |
| 2.4.5 | Slot 7 | 13 |
| 2.5 | FID Slots | 14 |
| 2.5.1 | Slot 0 | 14 |
| 2.5.2 | Slot 1 | 15 |
| 2.5.3 | Slot 2 | 16 |
| A | Summary | 17 |
| A.1 | Status | 17 |
| A.2 | Comments | 17 |

1 Front

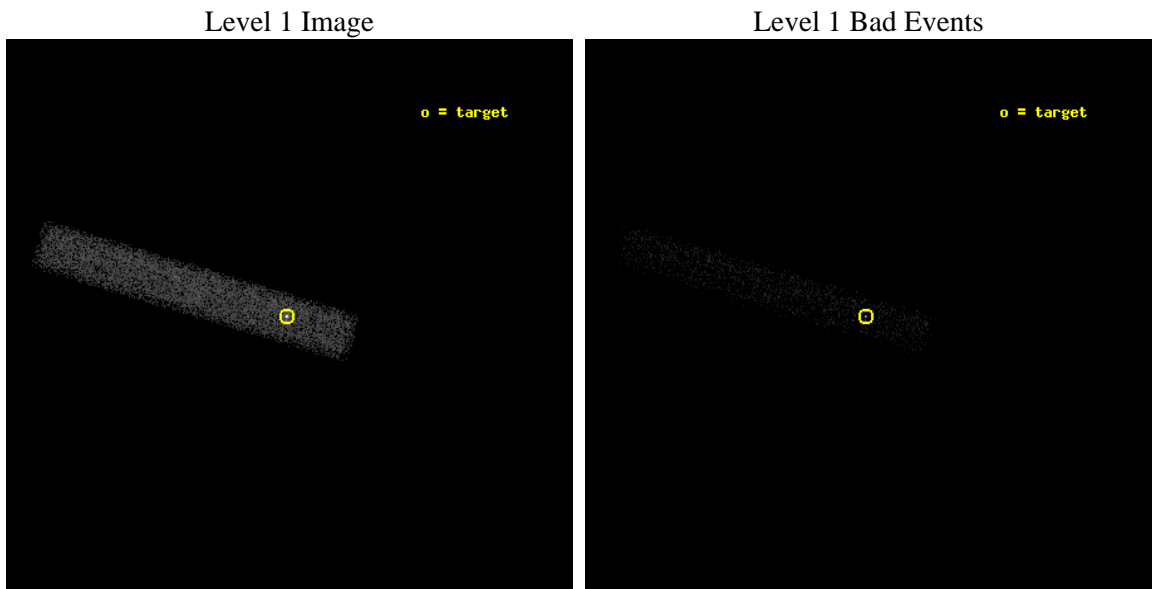
| | | |
|----------|---|---|
| seq_num | 401431 | Sequence number |
| obs_id | 14429 | Observation id |
| title | Crust cooling of accretion heated neutron stars | Proposal title |
| observer | Dr. Rudy Wijnands | Principal investigator |
| object | MAXI J0556-332 | Source name |
| dtycycle | 0 | |
| cycle | P | events from which exps? Prim/Second/Both |
| ra_targ | 89.1925 | Observer's specified target RA [deg] |
| dec_targ | -33.173972 | Observer's specified target Dec [deg] |
| ra_nom | 89.191496667824 | Nominal RA [deg] |
| dec_nom | -33.176850798804 | Nominal Dec [deg] |
| roll_nom | 196.62787986163 | Nominal Roll [deg] |
| revision | 1 | Processing version of data |
| ontime | 15069.999101758 | Sum of GTIs [s] |
| livetime | 13667.69372552 | Livetime [s] |
| ontime7 | 15069.999101758 | Sum of GTIs [s] |
| l2events | 12691 | Number of level 2 events |



2 OBI

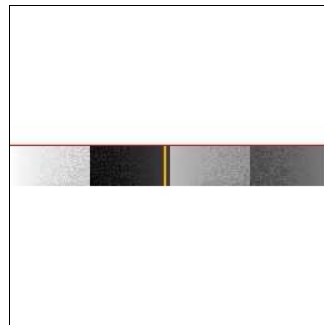
2.1 OBI

2.1.1 Images



2.1.2 Bias

Chip 7



2.1.3 Parameters

| | | | | | |
|----------|---------------------|--------------------------------|----------------|-----------------|---|
| obi_num | 0 | Obi number | sched_exp_time | 15000.160000 | [s] Scheduled observation exposure time |
| ascdsver | 8.4.5 | Processing system revision | ontime | 15069.999101758 | Sum of GTIs [s] |
| caldbver | 4.4.10 | | ontime7 | 15069.999101758 | Sum of GTIs [s] |
| date | 2012-06-07T15:00:36 | Date and time of file creation | l1events | 20647 | Number of level 1 events |
| revision | 1 | Processing version of data | | | |

2.1.4 Events

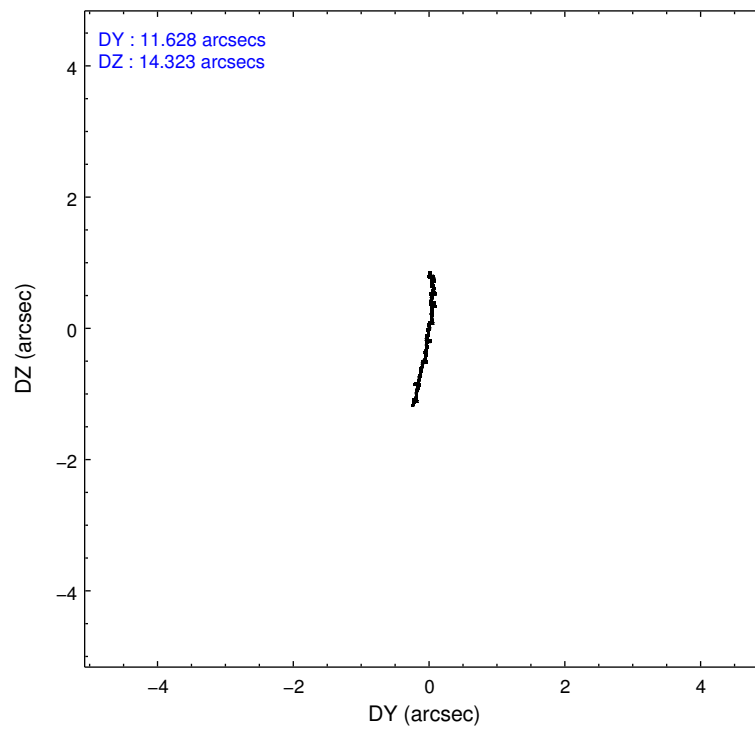
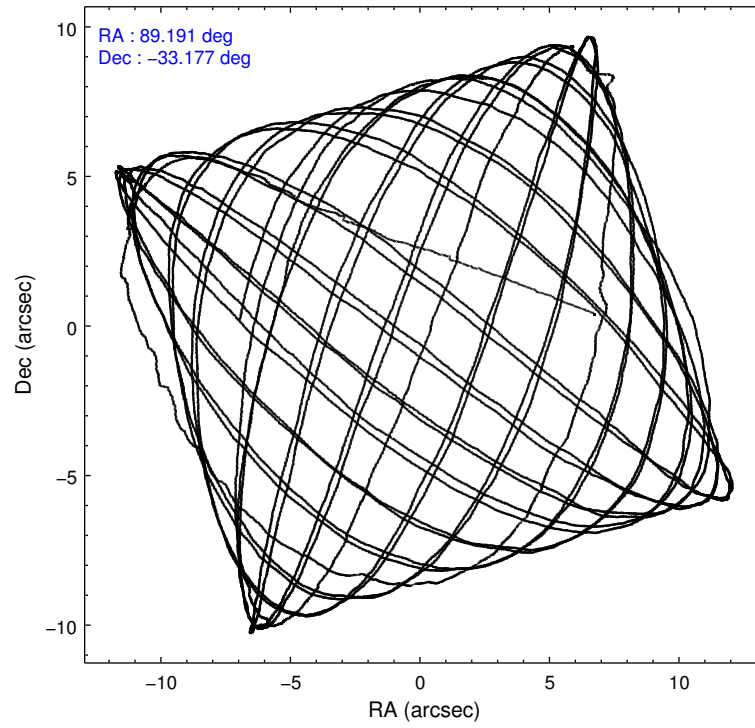
| | ccd 7 |
|-----------------|--------------|
| level 1 events | 20647 |
| rejected events | 7622 |
| rejected % | 36% |

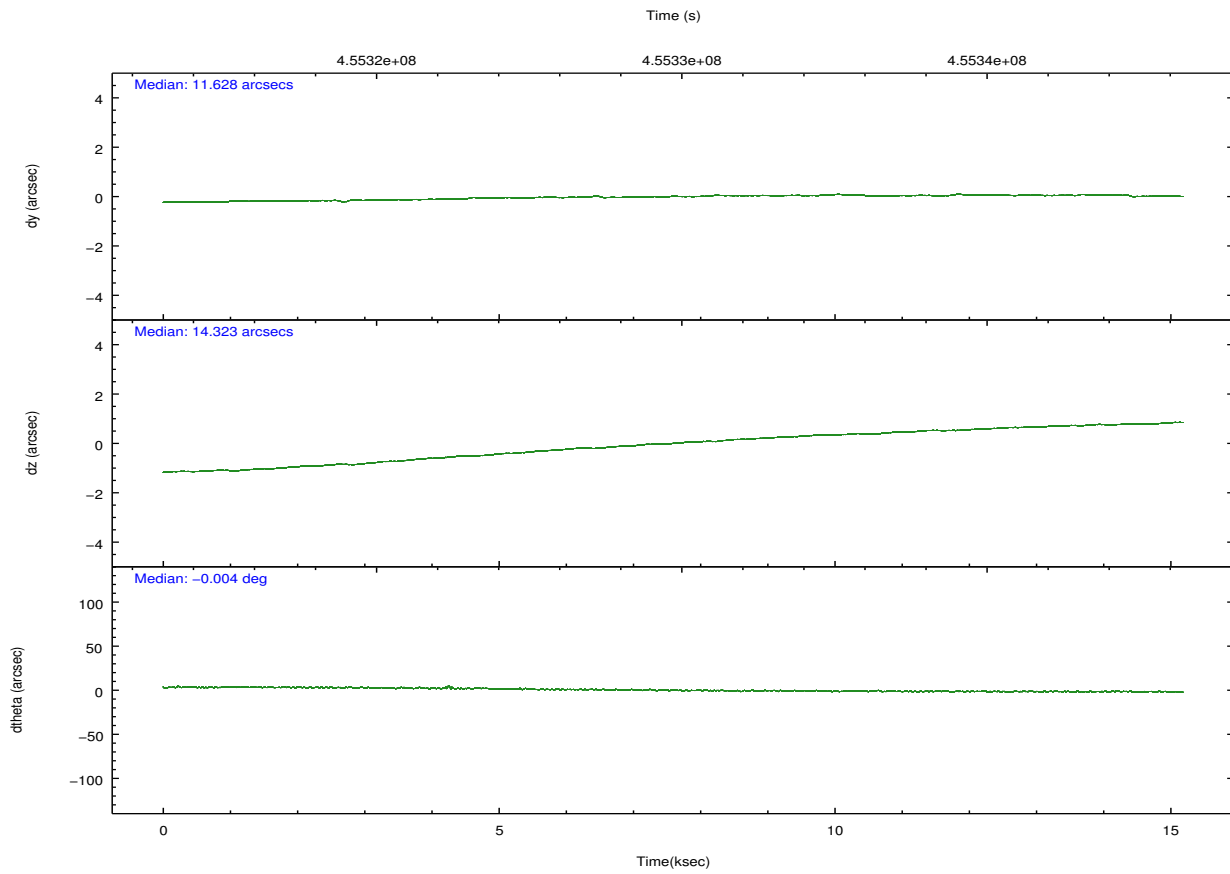
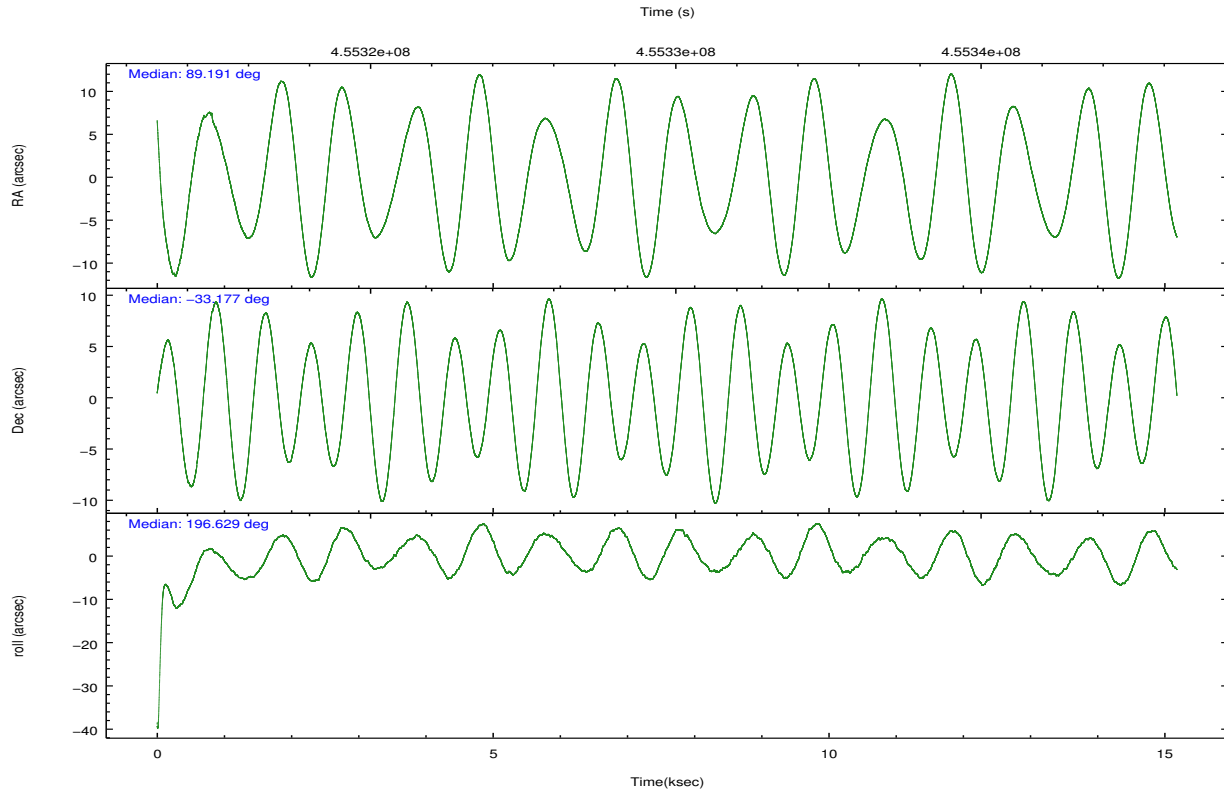
| | ccd 7 |
|----------------|--------------|
| grade 0 events | 2125 |
| | 10% |
| grade 1 events | 49 |
| | 0% |
| grade 2 events | 3040 |
| | 14% |
| grade 3 events | 1624 |
| | 7% |
| grade 4 events | 1561 |
| | 7% |
| grade 5 events | 1603 |
| | 7% |
| grade 6 events | 4675 |
| | 22% |
| grade 7 events | 5970 |
| | 28% |

2.2 Compared Parameters

| Parameter | Planned | Actual | Parameter | Planned | Actual |
|-----------------------------------|---------------------|----------------------|---------------------------------------|-----------|---------|
| Instrument | ACIS | ACIS | Obspar format version number | 7 | 7 |
| Detector | ACIS-7 | ACIS-7 | Obspar file type | PREDICTED | ACTUAL |
| Grating | NONE | NONE | Obspar update status | NONE | UPDATED |
| Data mode | FAINT | FAINT | Number of optional ACIS chips dropped | 0 | 0 |
| Observation mode | POINTING | POINTING | On-chip summing requested | N | N |
| [deg] Pointing RA | 89.213609 | 89.19149666782397 | Subarray requested | CUSTOM | 1/8 |
| [deg] Pointing Dec | -33.156746 | -33.17685079880381 | Subarray start row | 449 | 449 |
| [deg] Pointing Roll | 196.483390 | 196.6278798616308 | Subarray row count | 128 | 128 |
| [mm] SIM focus pos | -0.684267 | -0.6828225247311905 | Alternating exposures requested | N | N |
| [mm] SIM defocus | 0 | 0.001444936568705701 | [s] Primary exposure time | 0.000000 | 0.4 |
| [mm] SIM translation stage pos | -190.132523 | -190.1400660498719 | | | |
| [mm] SIM translation stage offset | 0 | 0.00754346686406393 | | | |
| [s] Observation start time (MET) | 455322450.184000 | 455321325.98587 | | | |
| Observation start date | 2012-06-05T22:26:24 | 2012-06-05T22:08:45 | | | |
| [s] Observation end time (MET) | 455337451.184000 | 455337680.37424 | | | |
| Observation end date | 2012-06-06T02:36:25 | 2012-06-06T02:41:20 | | | |
| Read mode | TIMED | TIMED | | | |

2.3 Aspect



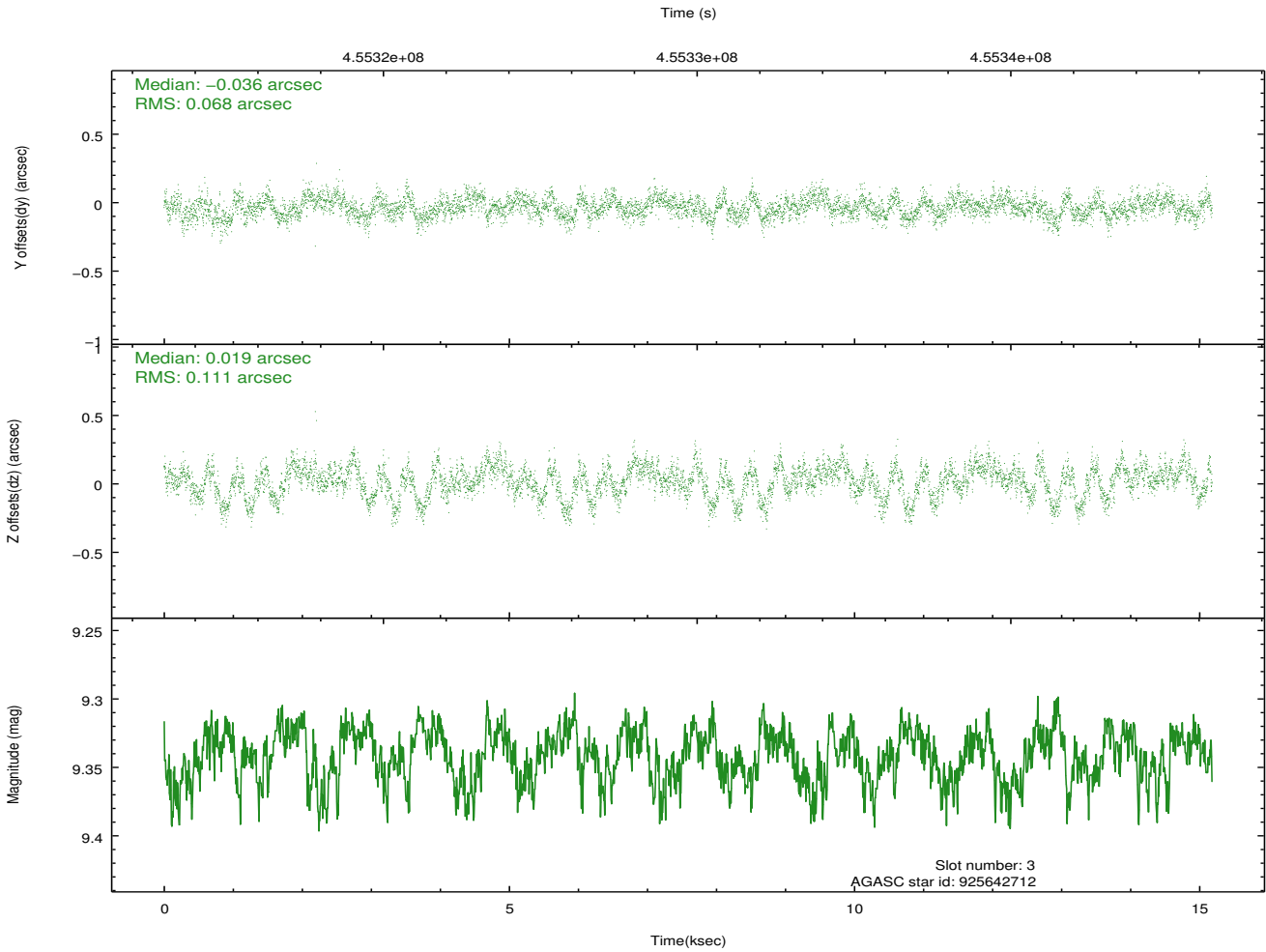
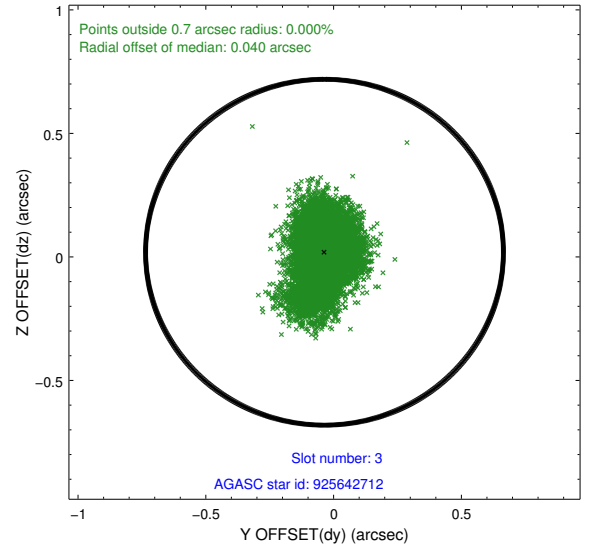
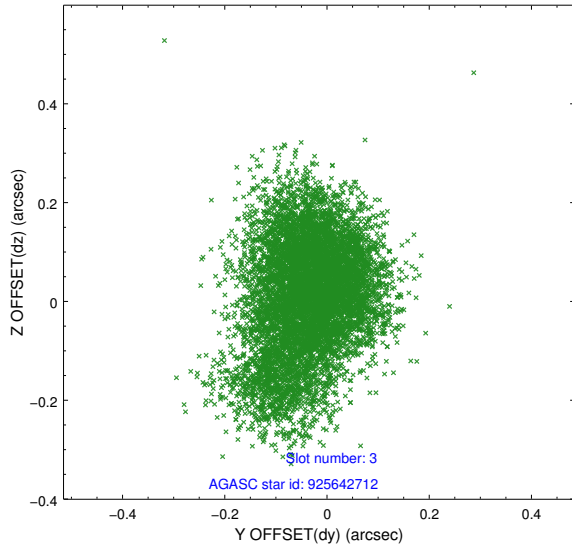


Slot Statistics

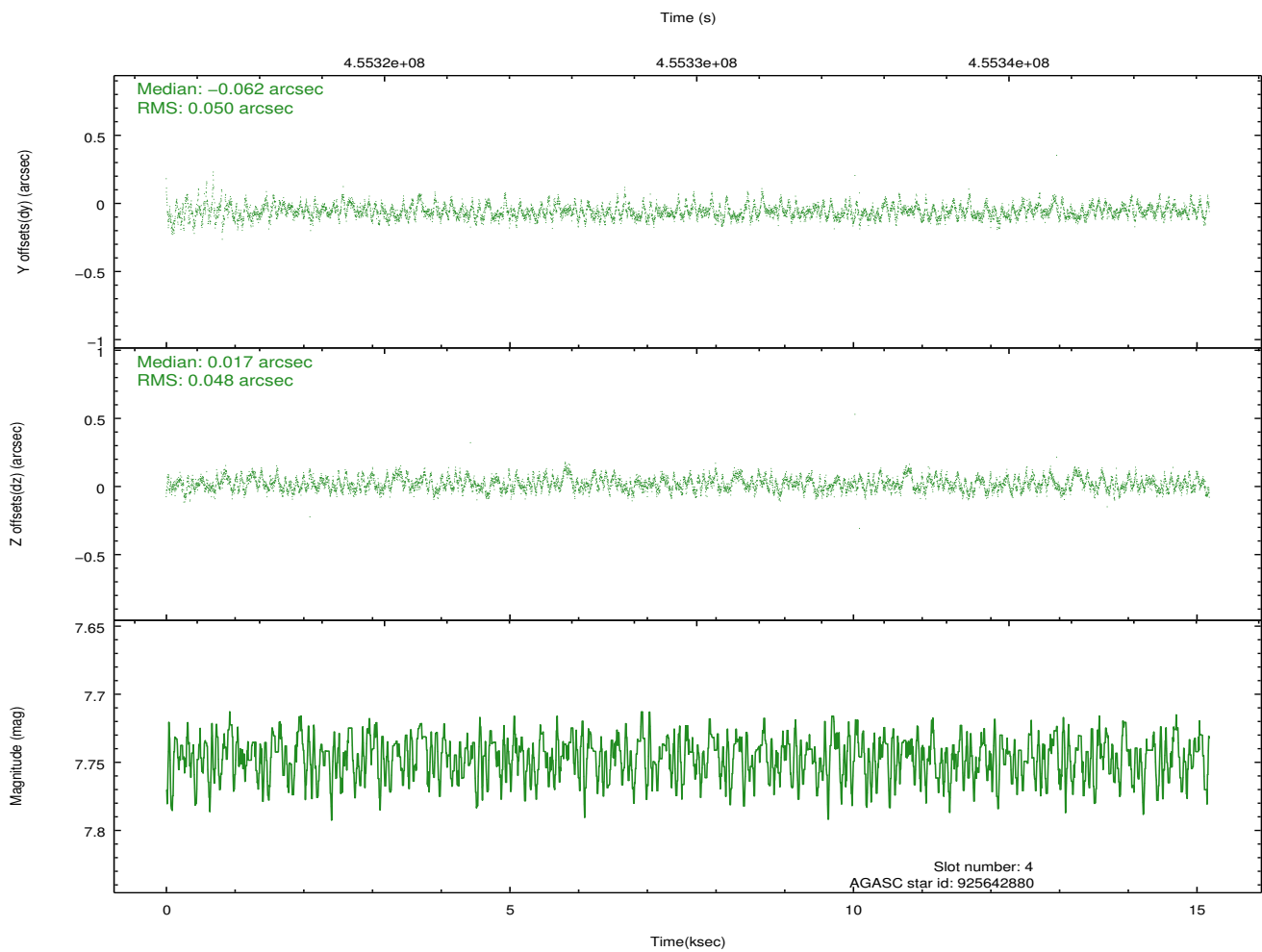
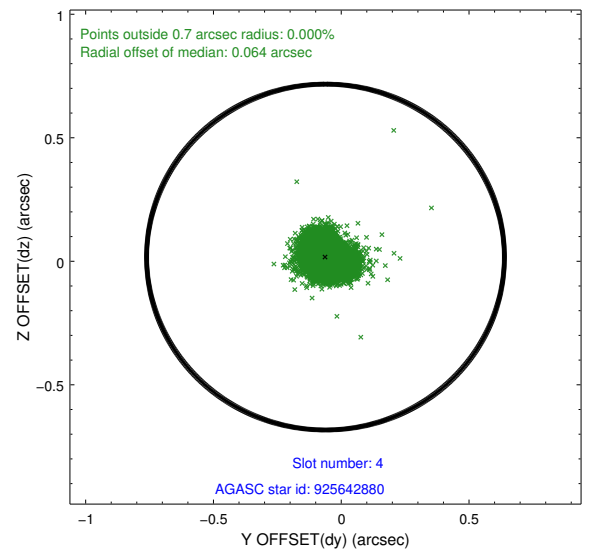
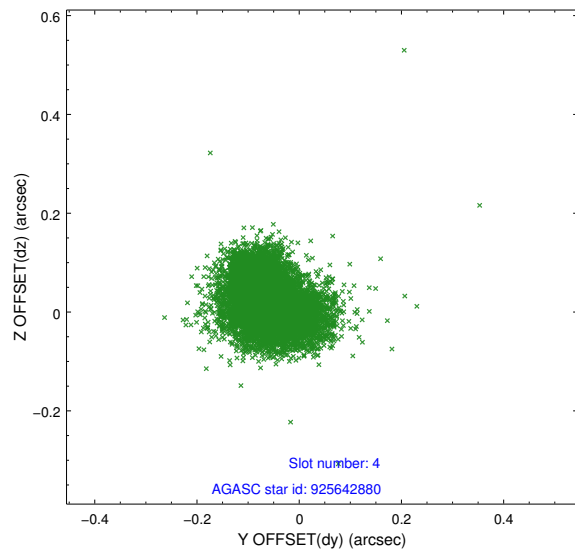
| slot | status | id | mag | n_pts | med_dy | med_dz | dr1 | dr2 | ra | dec | mean_y | mean_z |
|------|--------|-----------|------|-------|--------|--------|-------|-------|-----------|------------|----------|----------|
| 0 | FID | ACIS-S-2 | 6.94 | 3703 | -0.065 | -0.042 | 0.018 | 0.024 | 0.000000 | 0.000000 | -764.53 | -1735.65 |
| 1 | FID | ACIS-S-4 | 7.03 | 3703 | 0.196 | 0.042 | 0.009 | 0.018 | 0.000000 | 0.000000 | 2148.87 | 172.61 |
| 2 | FID | ACIS-S-5 | 7.06 | 3703 | -0.162 | 0.008 | 0.015 | 0.022 | 0.000000 | 0.000000 | -1817.09 | 166.58 |
| 3 | GUIDE | 925642712 | 9.34 | 7398 | -0.036 | 0.019 | 0.135 | 0.232 | 89.246145 | -33.485552 | 242.21 | 1163.21 |
| 4 | GUIDE | 925642880 | 7.75 | 7407 | -0.062 | 0.017 | 0.073 | 0.117 | 89.133148 | -33.434507 | 515.24 | 890.59 |
| 5 | GUIDE | 925645016 | 9.09 | 7402 | 0.011 | -0.072 | 0.102 | 0.160 | 89.945223 | -33.615732 | -1632.47 | 2214.46 |
| 6 | GUIDE | 925645552 | 7.57 | 7407 | -0.102 | -0.010 | 0.076 | 0.120 | 88.738097 | -33.665766 | 1886.62 | 1356.51 |
| 7 | GUIDE | 926158304 | 8.63 | 7402 | 0.187 | 0.055 | 0.072 | 0.115 | 88.773773 | -33.925420 | 2045.80 | 2283.55 |

2.4 Star Slots

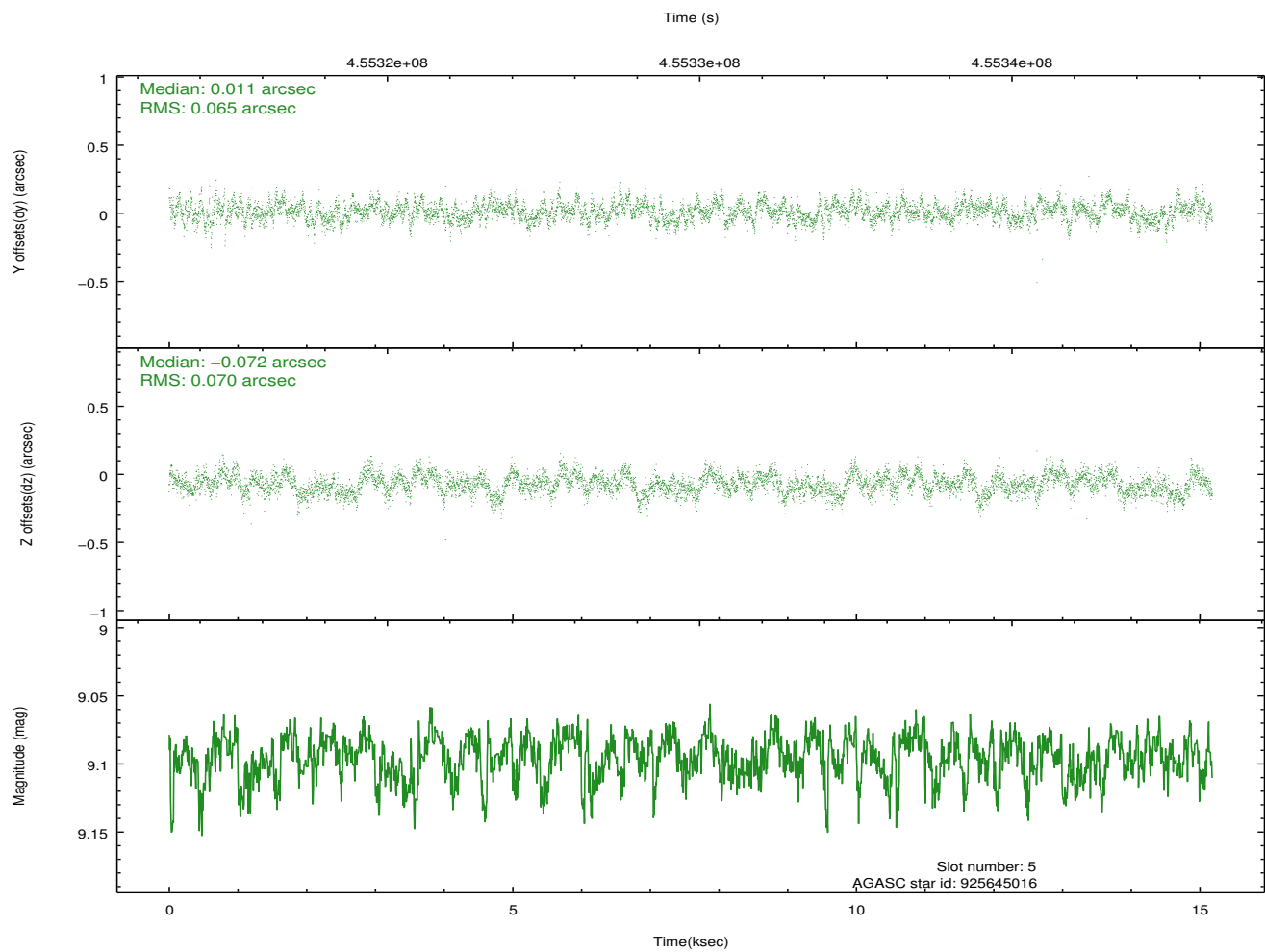
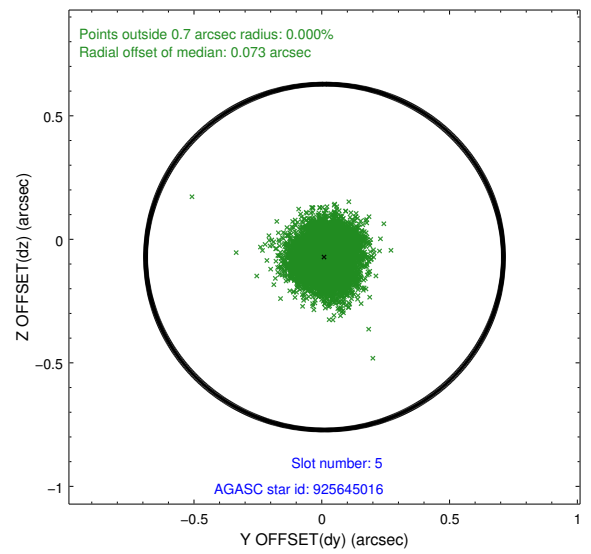
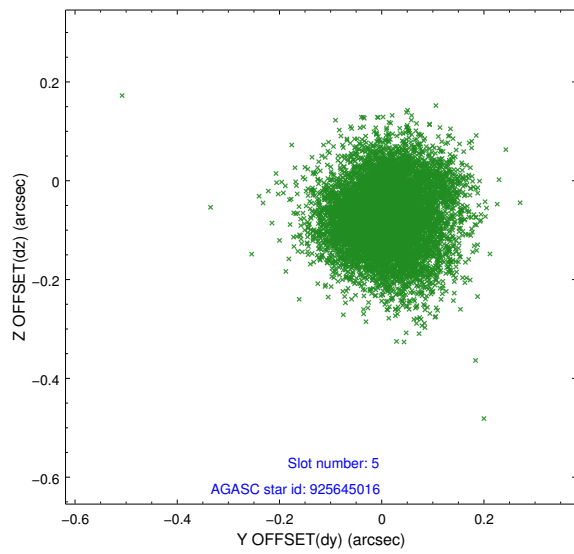
2.4.1 Slot 3



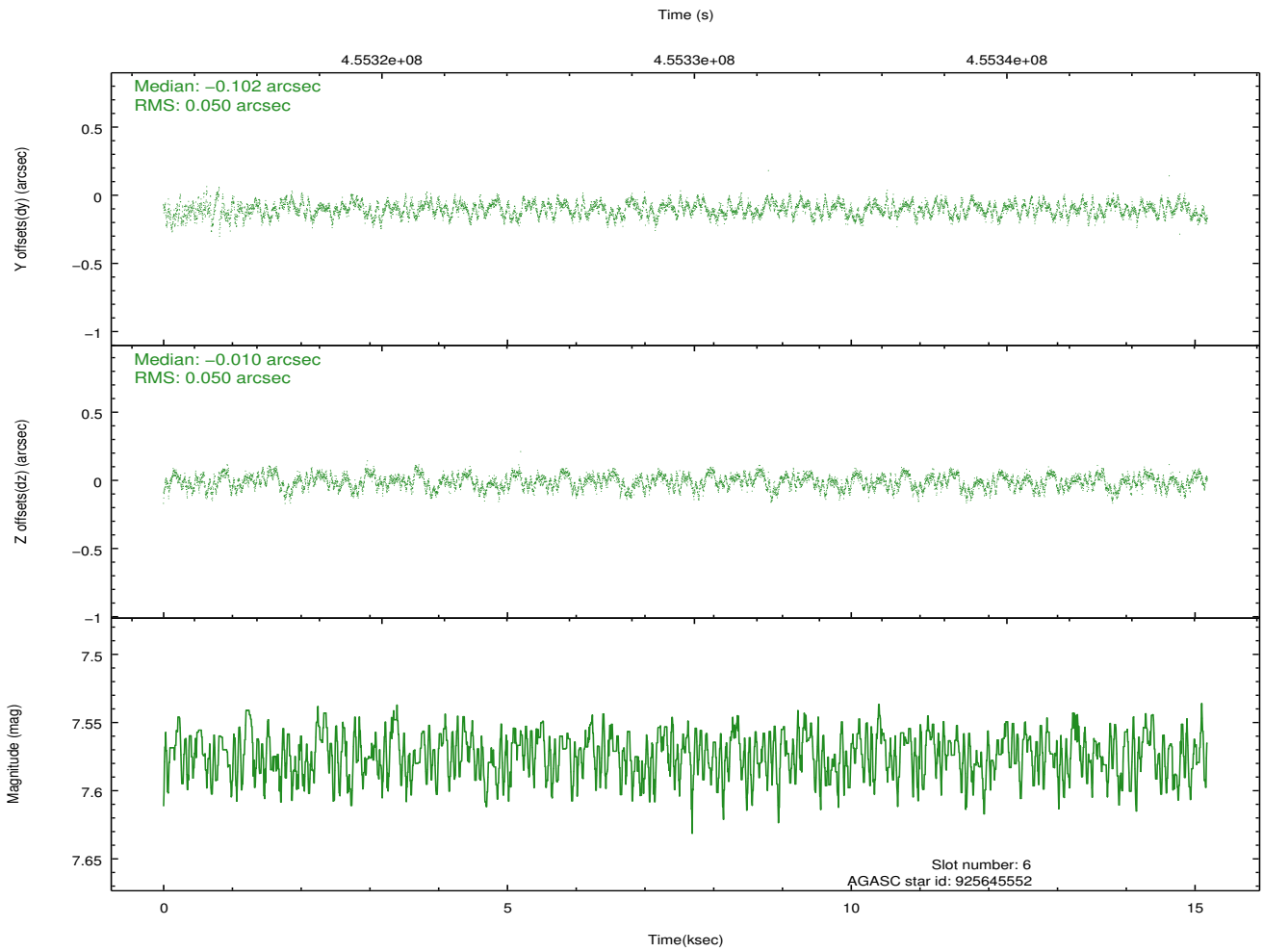
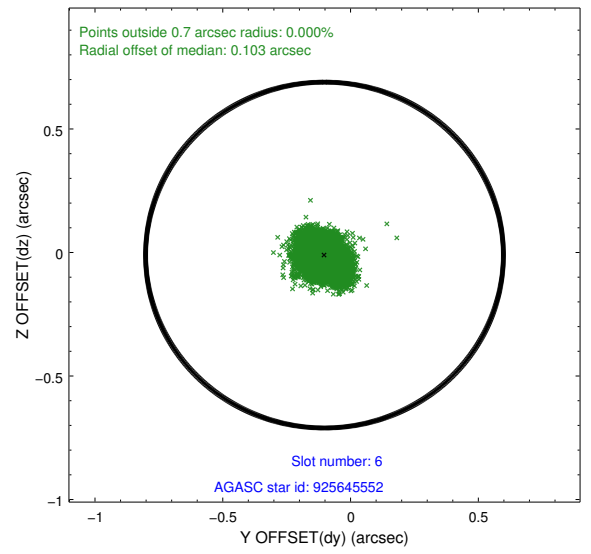
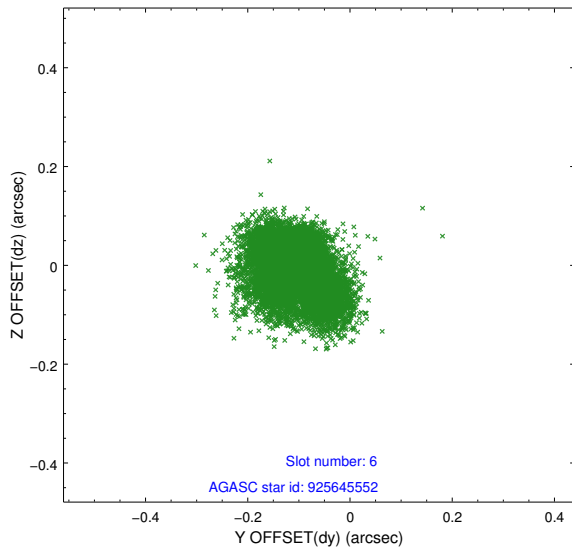
2.4.2 Slot 4



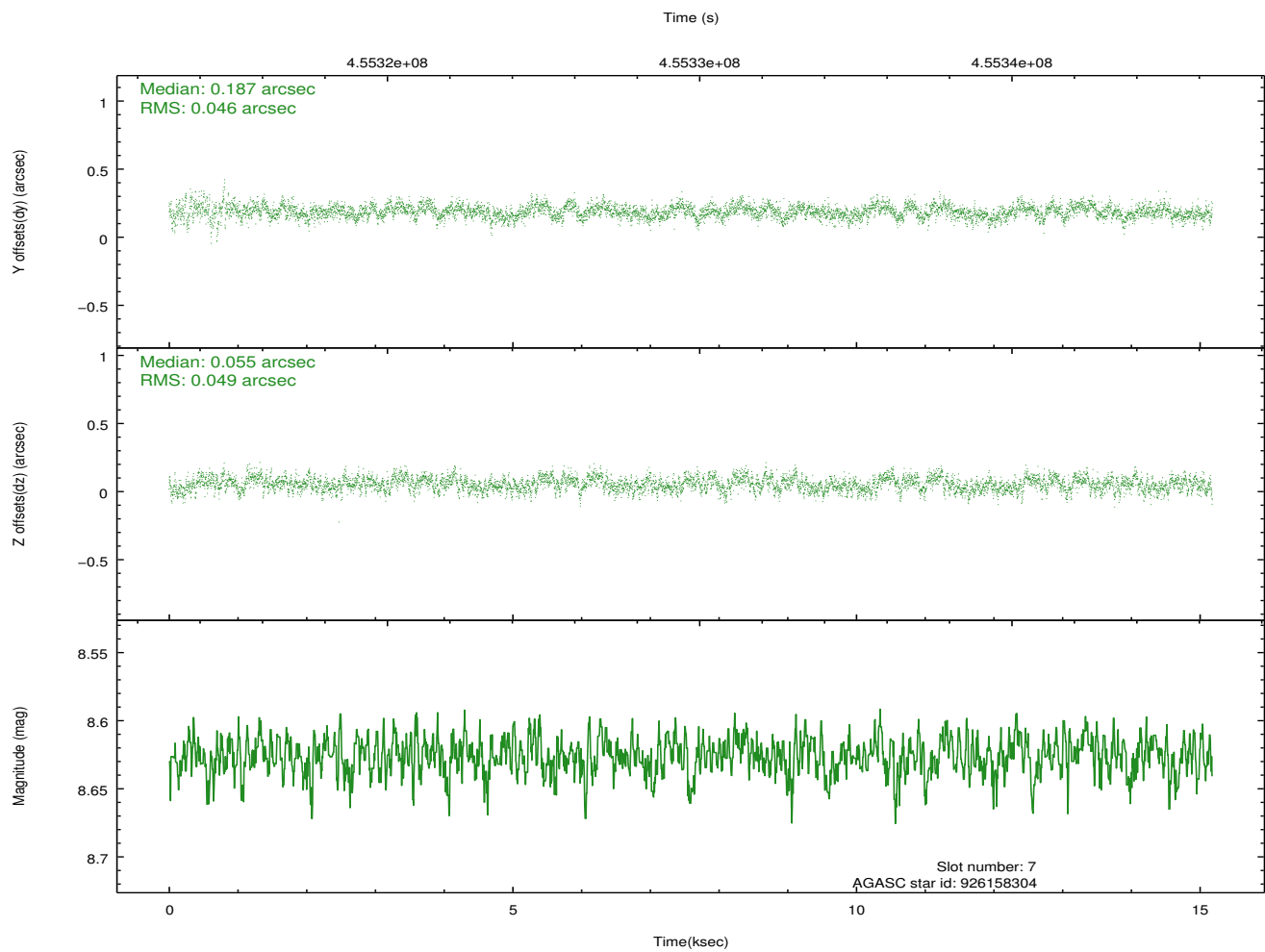
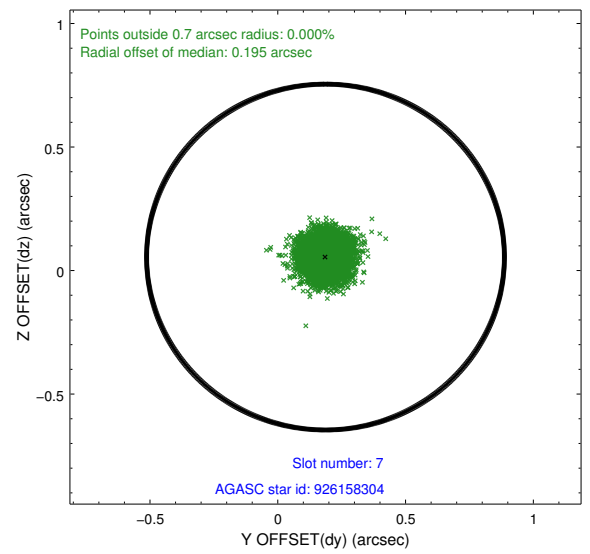
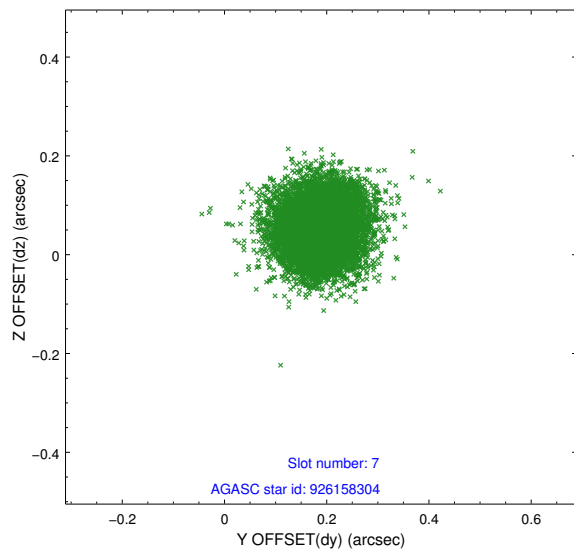
2.4.3 Slot 5



2.4.4 Slot 6

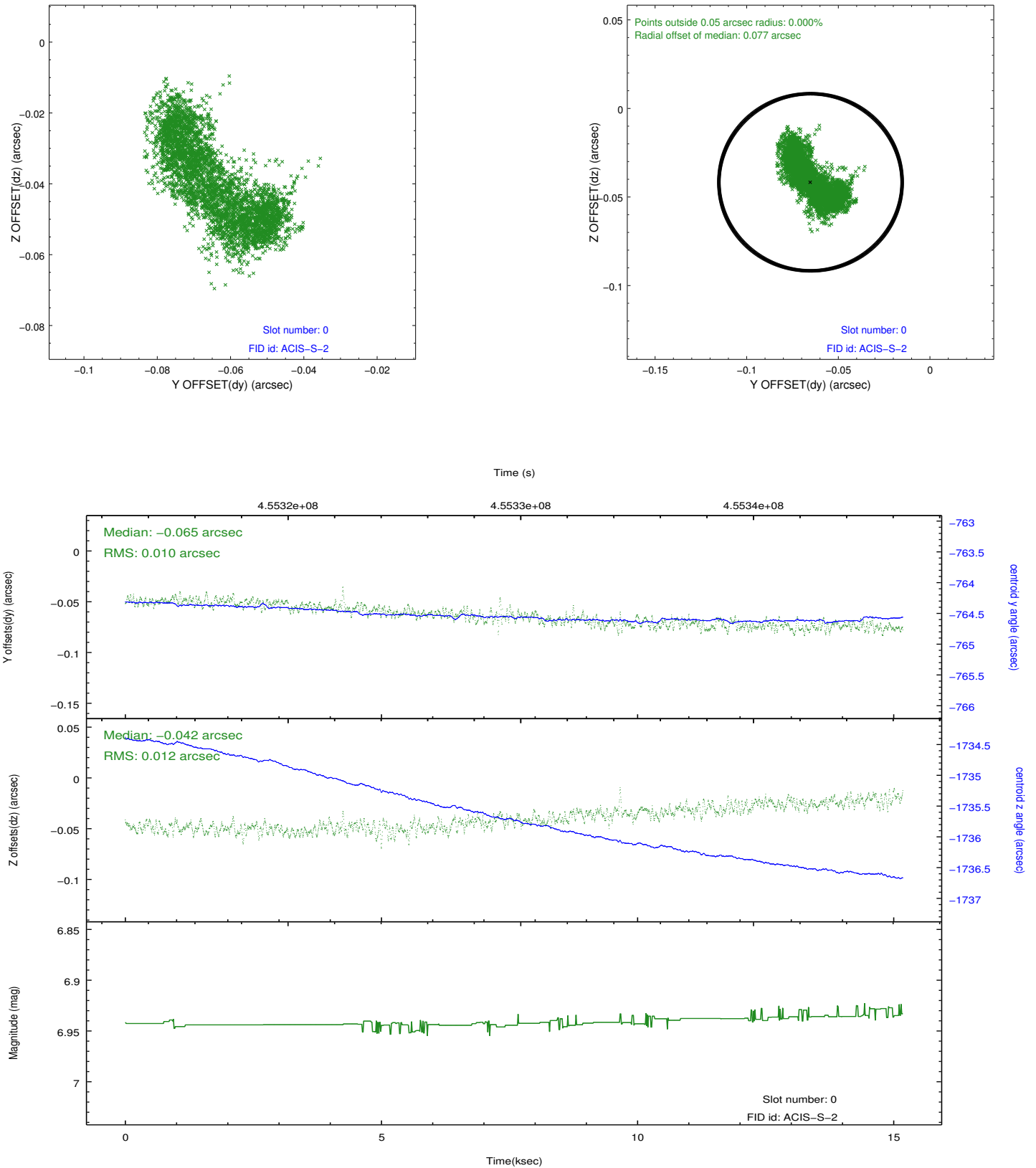


2.4.5 Slot 7

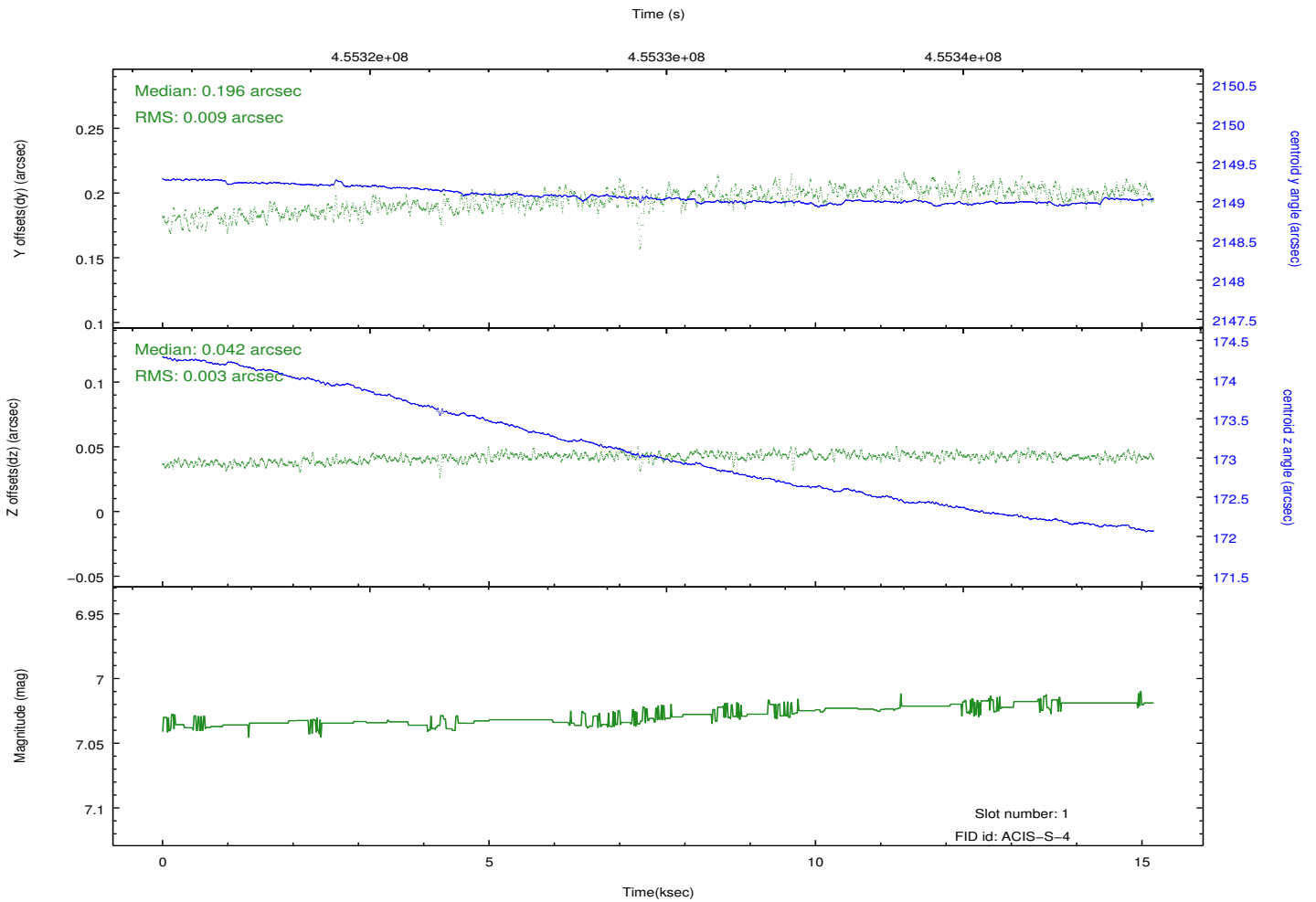
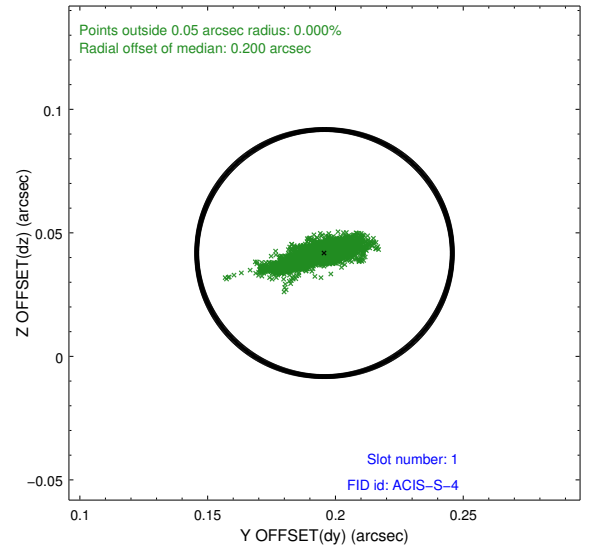
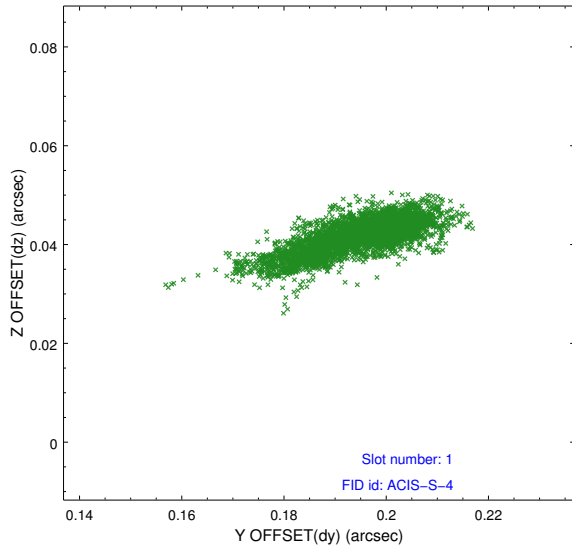


2.5 FID Slots

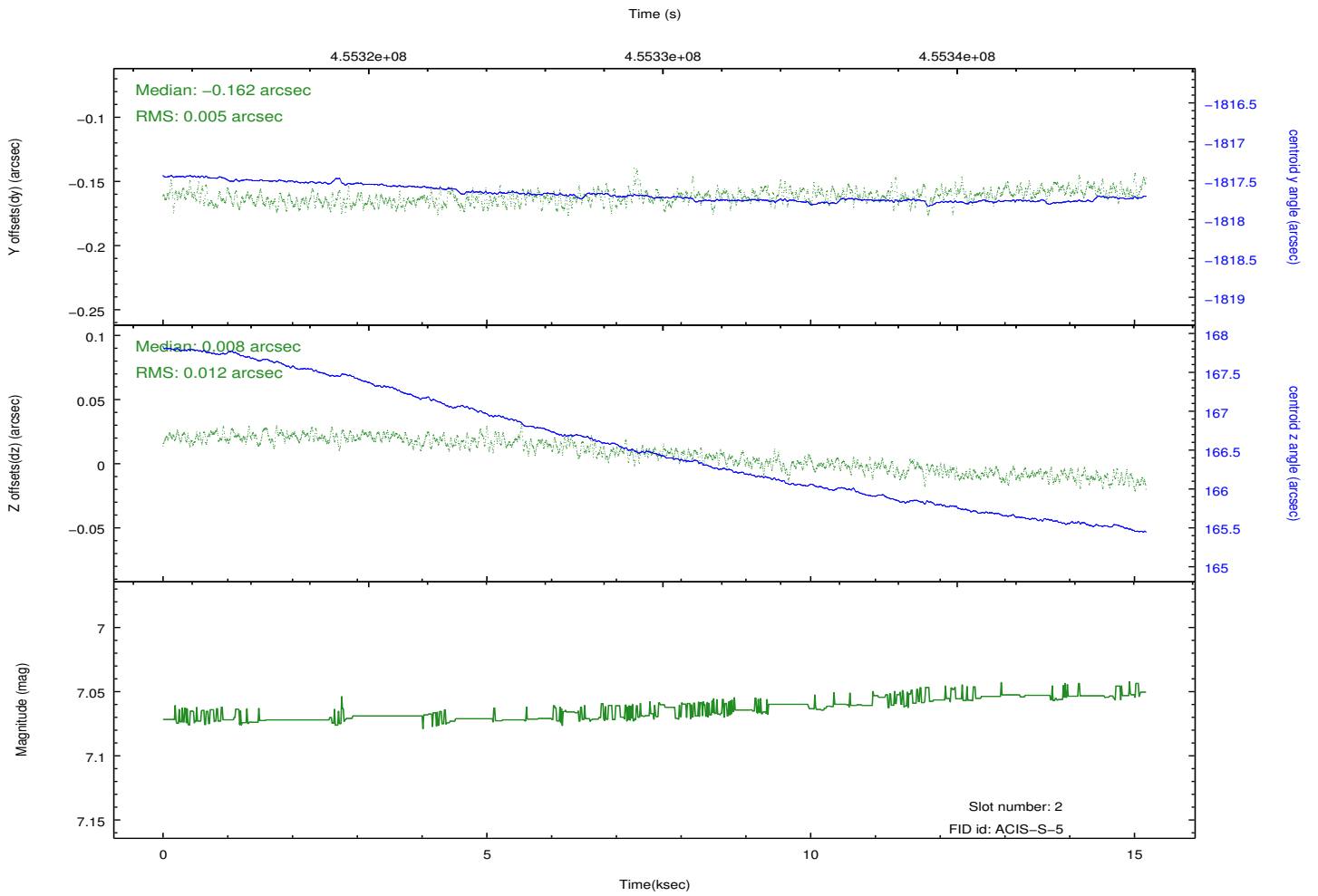
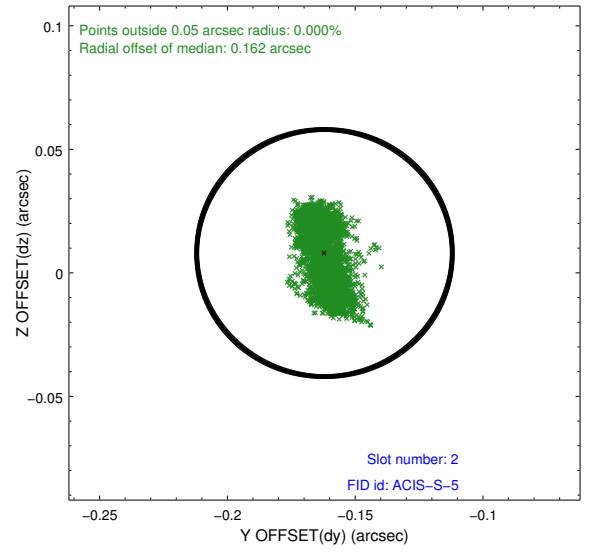
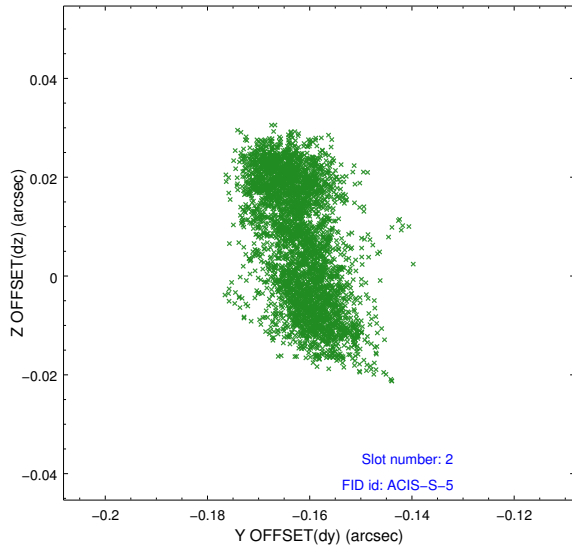
2.5.1 Slot 0



2.5.2 Slot 1



2.5.3 Slot 2



A Summary

A.1 Status

| | |
|----------------------------|-----------------|
| V&V Scientist | Jen Lauer |
| V&V Date (YYYY-MM-DD) | 2012.06.07 |
| V&V Edition | 1 |
| V&V Disposition and Status | OK |
| V&V Charge Time | 15.069999101758 |

A.2 Comments

Monitor constraint met.