

V&V Reference Report

L2 ASCDS Version : 8.4.5

Observation 14469 - L2 Version 1
Chandra X-Ray Center

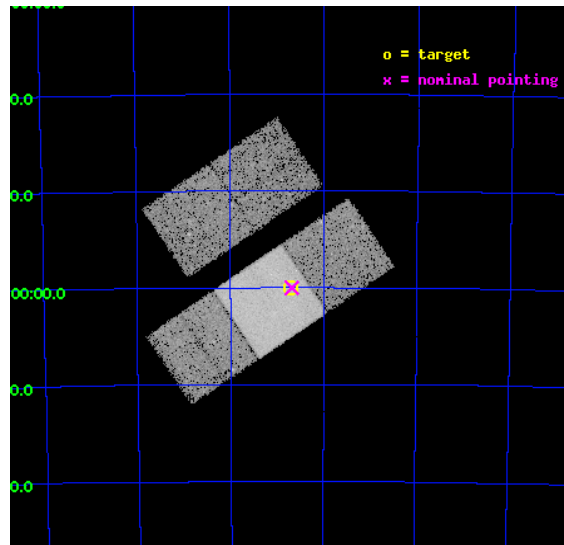
L2 Processing Date : Jul 31 2012

Contents

1	Front	2
2	OBI	3
2.1	OBI	3
2.1.1	Images	3
2.1.2	Bias	3
2.1.3	Parameters	4
2.1.4	Events	4
2.2	Compared Parameters	5
2.3	Aspect	6
2.4	Star Slots	9
2.4.1	Slot 3	9
2.4.2	Slot 4	10
2.4.3	Slot 5	11
2.4.4	Slot 6	12
2.4.5	Slot 7	13
2.5	FID Slots	14
2.5.1	Slot 0	14
2.5.2	Slot 1	15
2.5.3	Slot 2	16
A	Summary	17
A.1	Status	17
A.2	Comments	17

1 Front

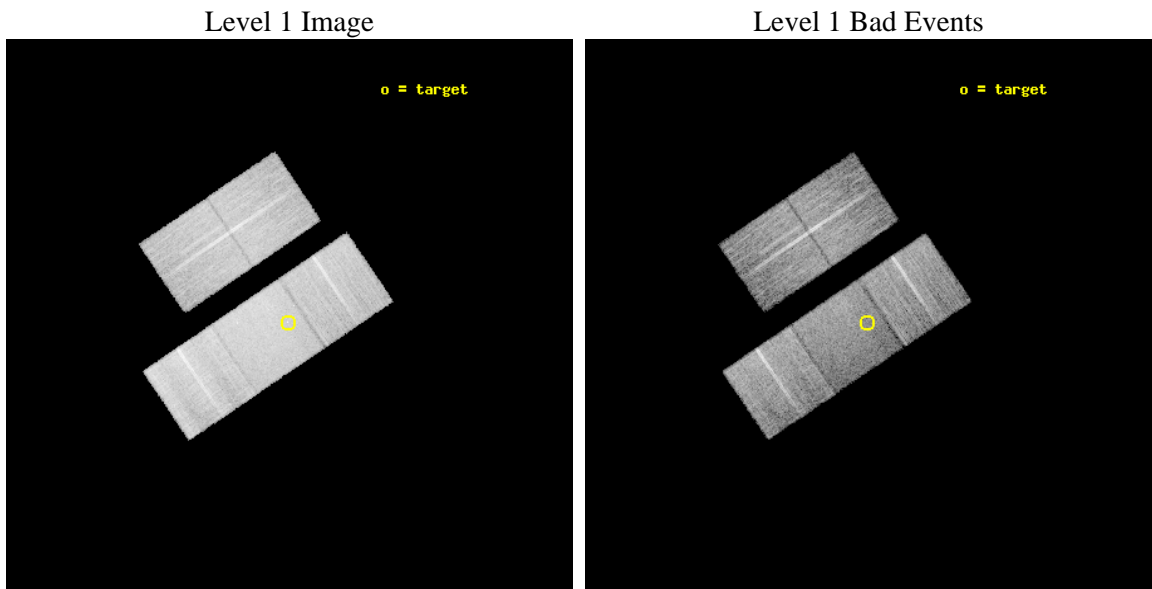
seq_num	501626	Sequence number
obs_id	14469	Observation id
title	The Astrophysics of the Most Energetic Gamma-Ray Bursts	Proposal t
observer	Dr. Andrew Fruchter	Principal investigator
object	GRB 120711A	Source name
dtcycle	0	
cycle	P	events from which exps? Prim/Second/Both
ra_targ	94.6785	Observer's specified target RA [deg]
dec_targ	-70.999111	Observer's specified target Dec [deg]
ra_nom	94.669973783995	Nominal RA [deg]
dec_nom	-71.000347243715	Nominal Dec [deg]
roll_nom	146.00157798591	Nominal Roll [deg]
revision	1	Processing version of data
ontime	20065.669392824	Sum of GTIs [s]
livetime	19803.496650076	Livetime [s]
ontime2	20065.505232811	Sum of GTIs [s]
ontime3	20065.587312818	Sum of GTIs [s]
ontime6	20065.628352821	Sum of GTIs [s]
ontime7	20065.669392824	Sum of GTIs [s]
ontime8	20065.546272814	Sum of GTIs [s]
l2events	106202	Number of level 2 events



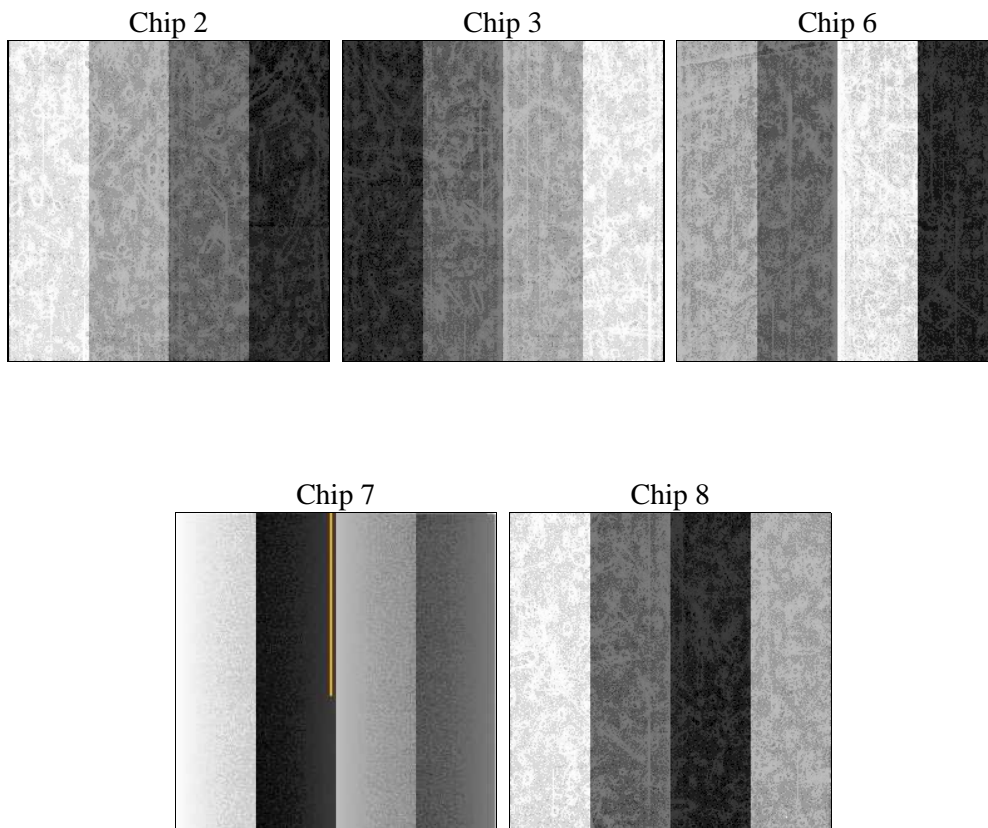
2 OBI

2.1 OBI

2.1.1 Images



2.1.2 Bias



2.1.3 Parameters

obi_num	0	Obi number	sched_exp_time	20000.598000	[s] Scheduled observation exposure time
ascdsver	8.4.5	Processing system revision	ontime	20065.669392824	Sum of GTIs [s]
caldbver	4.5.1	 	ontime2	20065.505232811	Sum of GTIs [s]
date	2012-08-01T01:16:29	Date and time of file creation	ontime3	20065.587312818	Sum of GTIs [s]
revision	1	Processing version of data	ontime6	20065.628352821	Sum of GTIs [s]
			ontime7	20065.669392824	Sum of GTIs [s]
			ontime8	20065.546272814	Sum of GTIs [s]
			l1events	604692	Number of level 1 events

2.1.4 Events

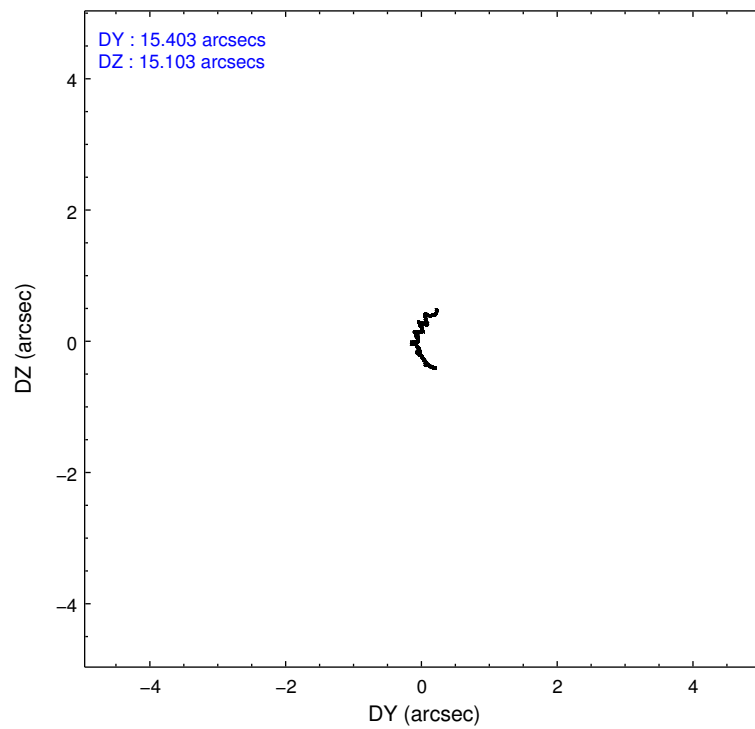
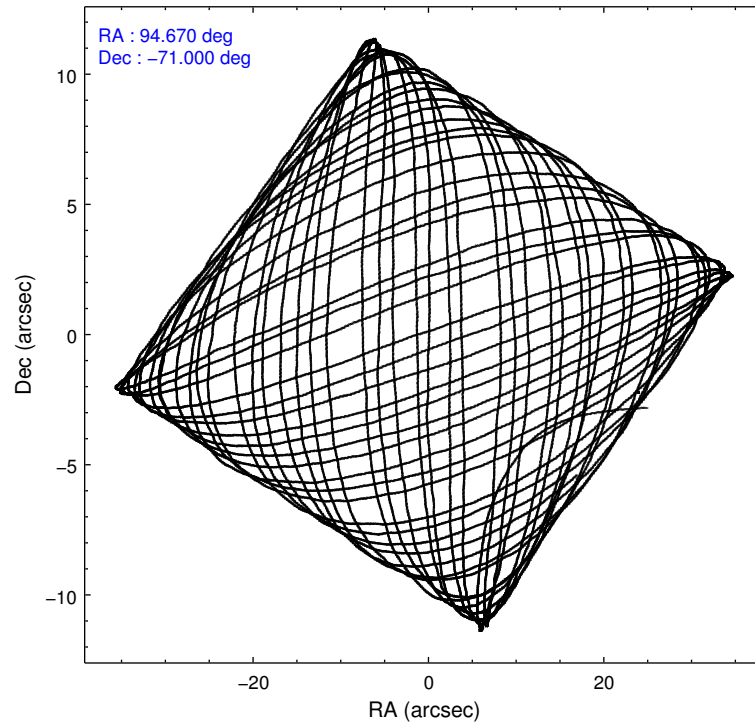
	ccd 2	ccd 3	ccd 6	ccd 7	ccd 8
level 1 events	105119	103554	110760	142249	143010
rejected events	93131	91606	97514	79632	104747
rejected %	88%	88%	88%	55%	73%

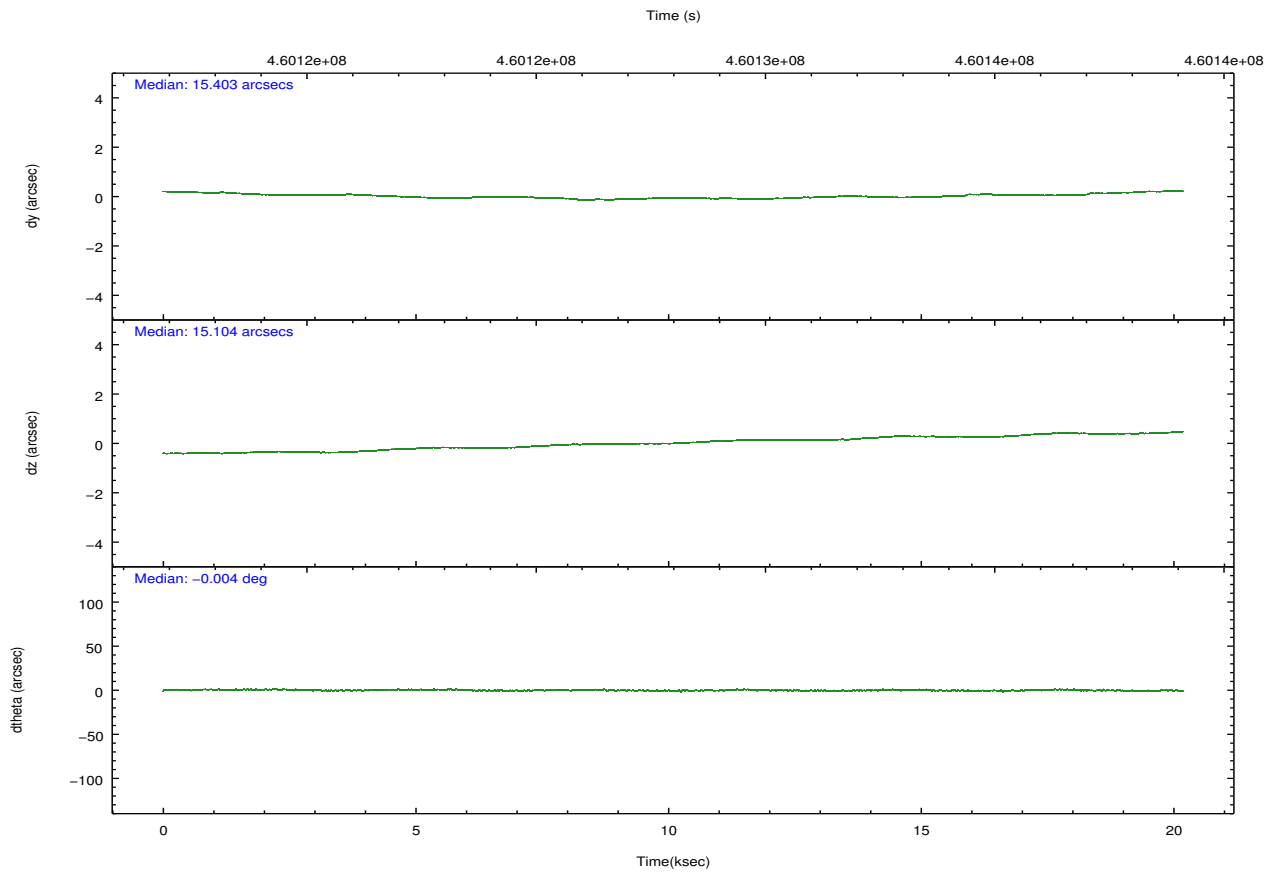
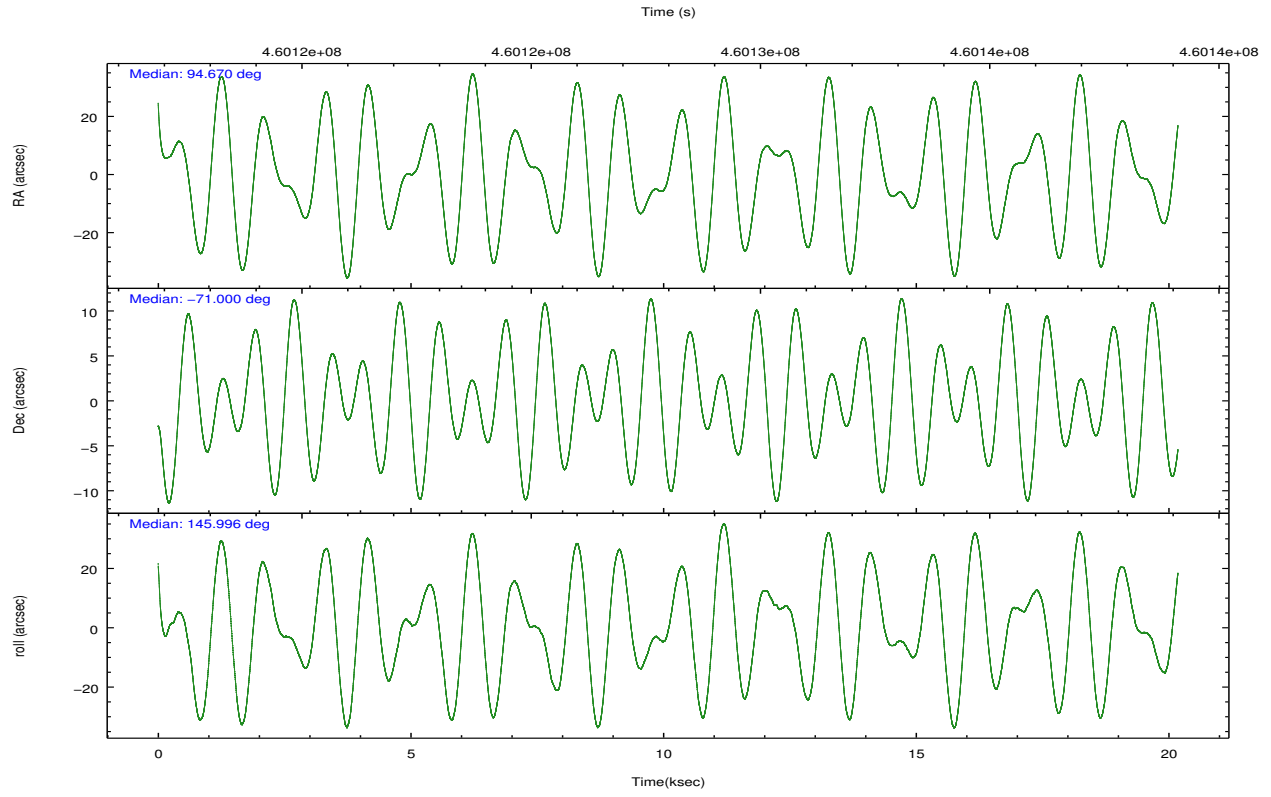
	ccd 2	ccd 3	ccd 6	ccd 7	ccd 8
grade 0 events	4309	4324	4616	5781	11304
	4%	4%	4%	4%	7%
grade 1 events	62	67	53	147	95
	0%	0%	0%	0%	0%
grade 2 events	2869	2658	2856	12765	8717
	2%	2%	2%	8%	6%
grade 3 events	1223	1260	1356	5405	4066
	1%	1%	1%	3%	2%
grade 4 events	1262	1251	1395	5229	3801
	1%	1%	1%	3%	2%
grade 5 events	4516	5354	5495	14432	7856
	4%	5%	4%	10%	5%
grade 6 events	2328	2459	3029	33457	10384
	2%	2%	2%	23%	7%
grade 7 events	88550	86181	91960	65033	96787
	84%	83%	83%	45%	67%

2.2 Compared Parameters

Parameter	Planned	Actual	Parameter	Planned	Actual
Instrument	ACIS	ACIS	Obspar format version number	7	7
Detector	ACIS-23678	ACIS-23678	Obspar file type	PREDICTED	ACTUAL
Grating	NONE	NONE	Obspar update status	NONE	UPDATED
Data mode	FAINT	FAINT	Number of optional ACIS chips dropped	0	0
Observation mode	POINTING	POINTING	On-chip summing requested	N	N
[deg] Pointing RA	94.753837	94.66997378399529	Subarray requested	NONE	NONE
[deg] Pointing Dec	-71.001856	-71.00034724371491	Alternating exposures requested	N	N
[deg] Pointing Roll	145.924247	146.0015779859126	[s] Primary exposure time	0.000000	3.1
[mm] SIM focus pos	-0.684267	-0.6828225247311905			
[mm] SIM defocus	0	0.001444936568705701			
[mm] SIM translation stage pos	-190.132523	-190.1400660498719			
[mm] SIM translation stage offset	0	0.00754346686406393			
[s] Observation start time (MET)	460118065.184000	460116909.17913			
Observation start date	2012-07-31T10:33:18	2012-07-31T10:15:09			
[s] Observation end time (MET)	460138066.184000	460138291.19274			
Observation end date	2012-07-31T16:06:39	2012-07-31T16:11:31			
Read mode	TIMED	TIMED			

2.3 Aspect



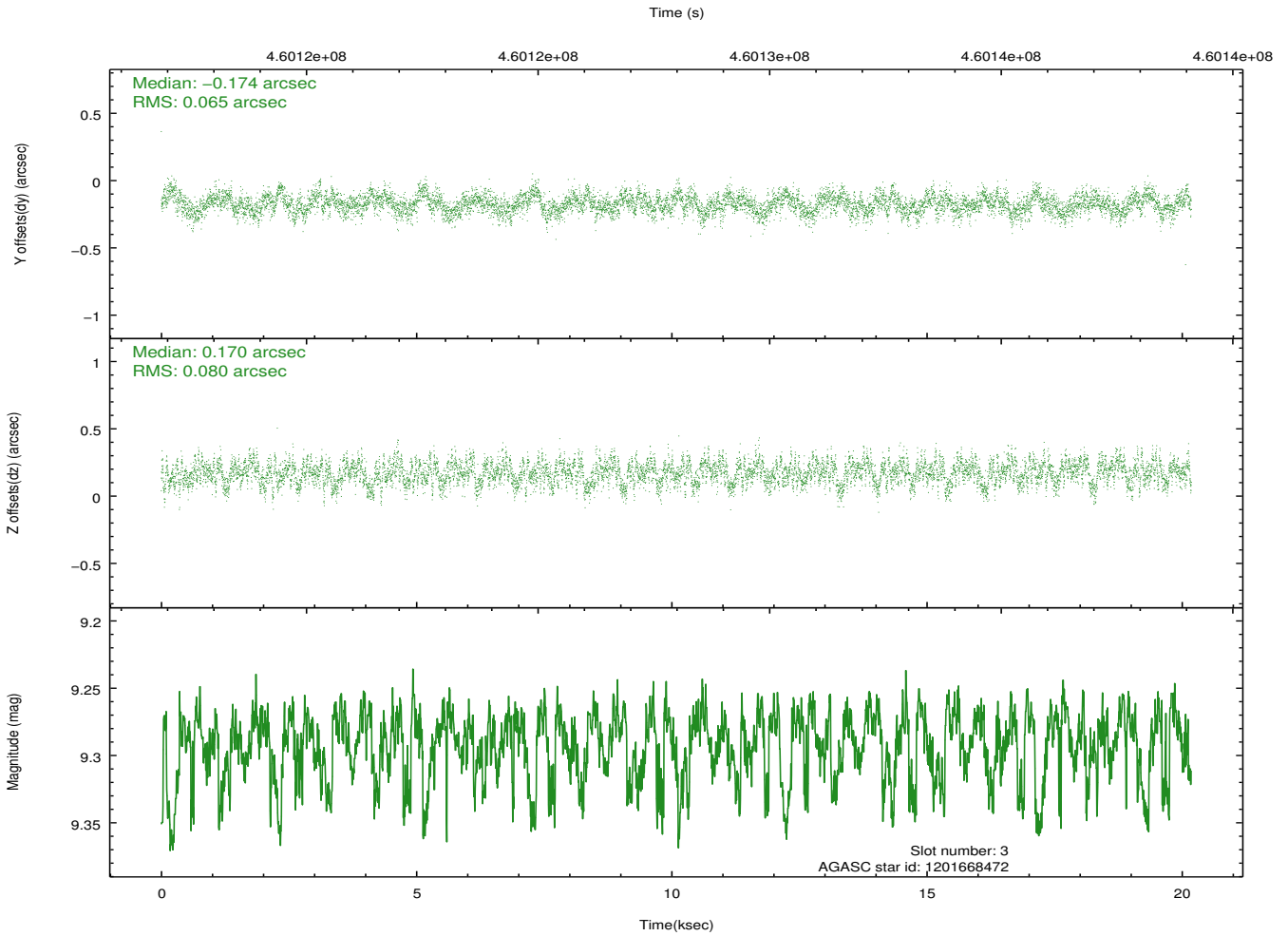
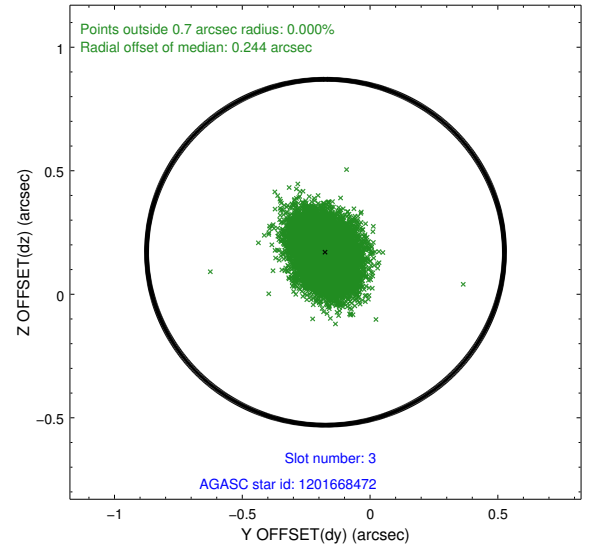
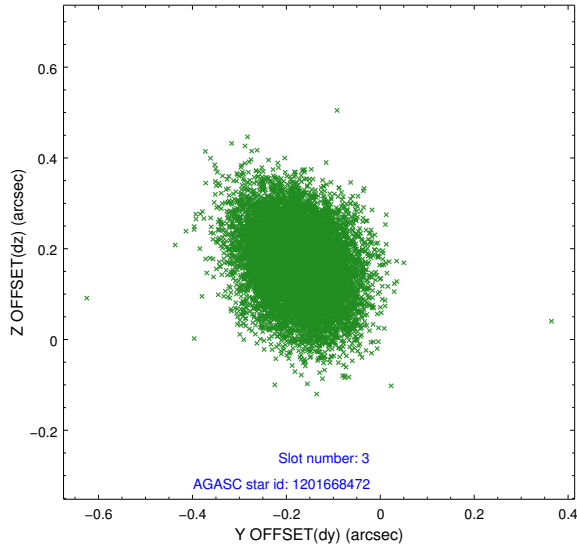


Slot Statistics

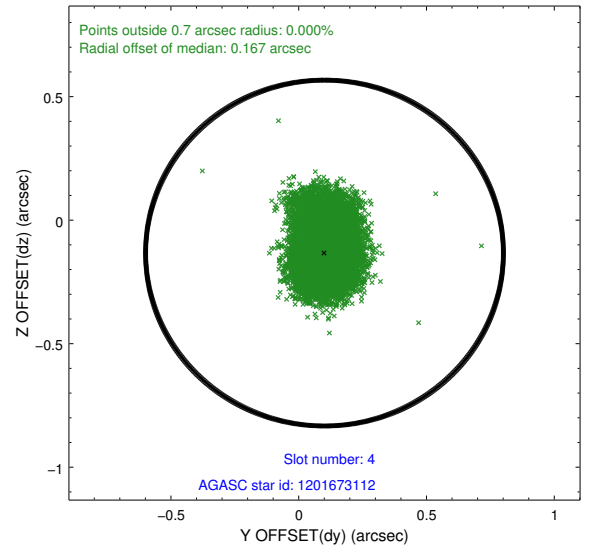
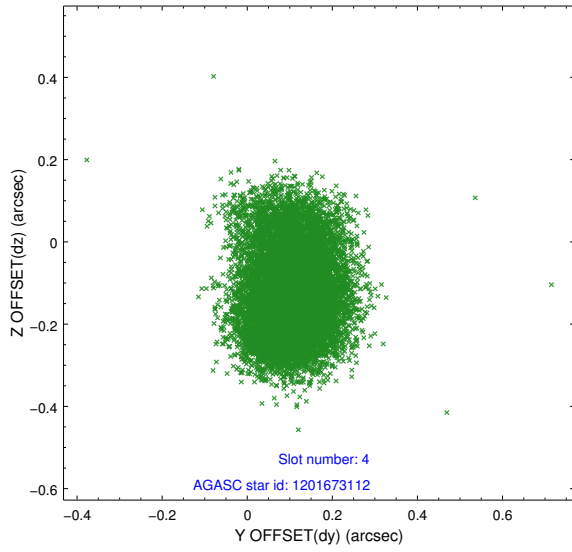
slot	status	id	mag	n_pts	med_dy	med_dz	dr1	dr2	ra	dec	mean_y	mean_z
0	FID	ACIS-S-2	7.01	4922	-0.133	-0.019	0.008	0.013	0.000000	0.000000	-768.52	-1736.53
1	FID	ACIS-S-4	7.10	4922	0.256	0.069	0.007	0.012	0.000000	0.000000	2145.04	171.87
2	FID	ACIS-S-5	7.13	4922	-0.154	-0.042	0.008	0.013	0.000000	0.000000	-1821.16	165.61
3	GUIDE	1201668472	9.29	9800	-0.174	0.170	0.110	0.177	95.162780	-70.551287	502.29	-1616.53
4	GUIDE	1201673112	9.02	9820	0.101	-0.133	0.133	0.216	93.755729	-70.460525	2082.41	-932.73
5	GUIDE	1201677552	9.34	9815	-0.167	0.187	0.144	0.218	93.710140	-70.598114	1841.29	-494.69
6	GUIDE	1201678376	9.28	9792	-0.073	0.013	0.113	0.181	92.122011	-71.119973	2263.49	2124.93
7	GUIDE	1202196968	9.15	9828	0.313	-0.232	0.125	0.218	94.954850	-71.380799	-955.09	1000.76

2.4 Star Slots

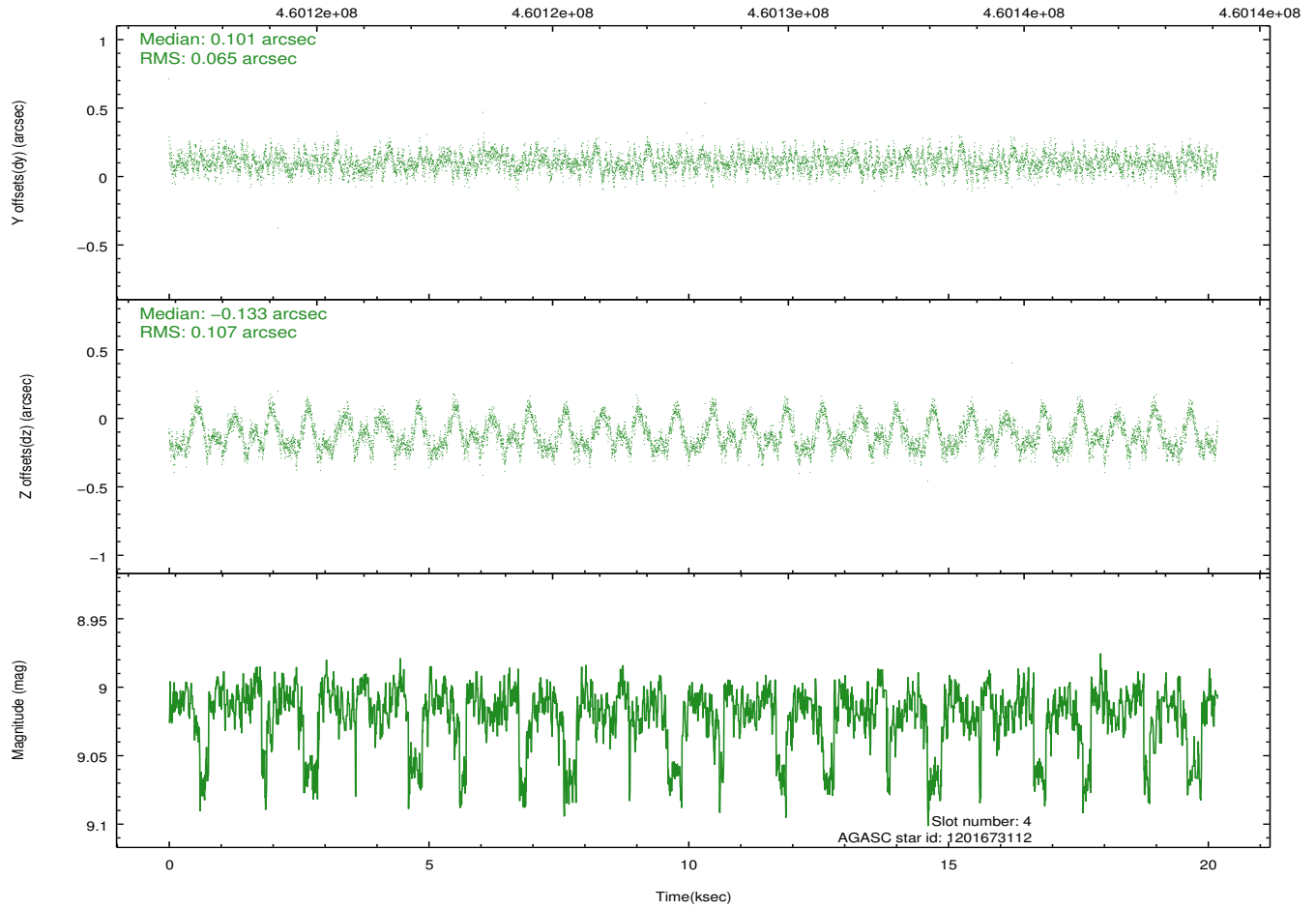
2.4.1 Slot 3



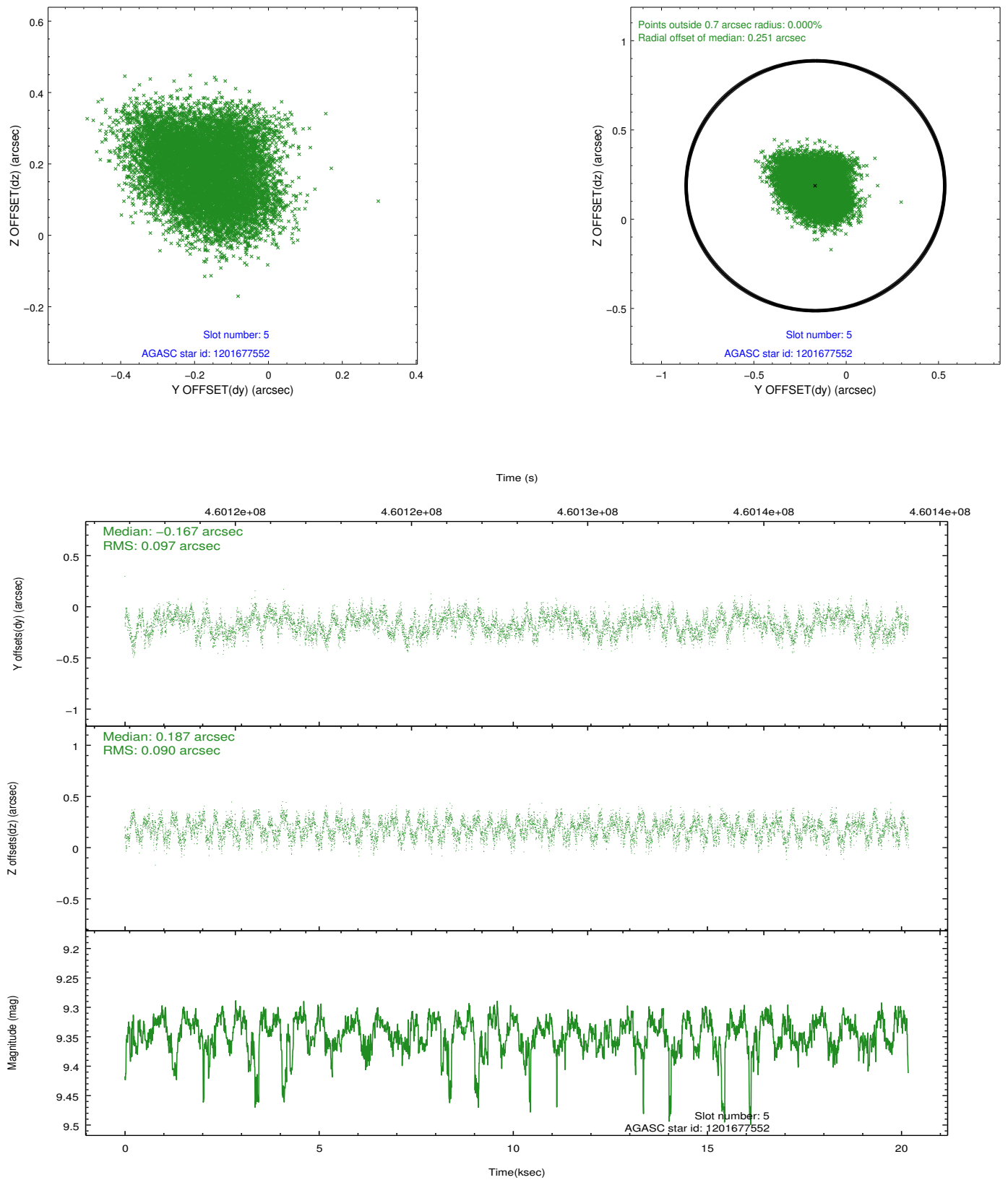
2.4.2 Slot 4



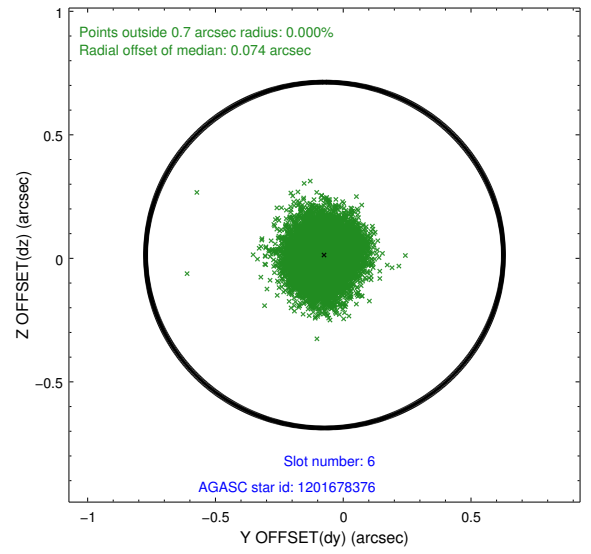
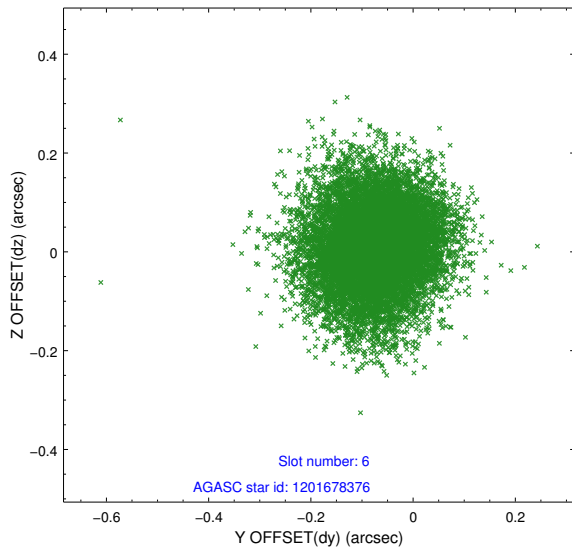
Time (s)



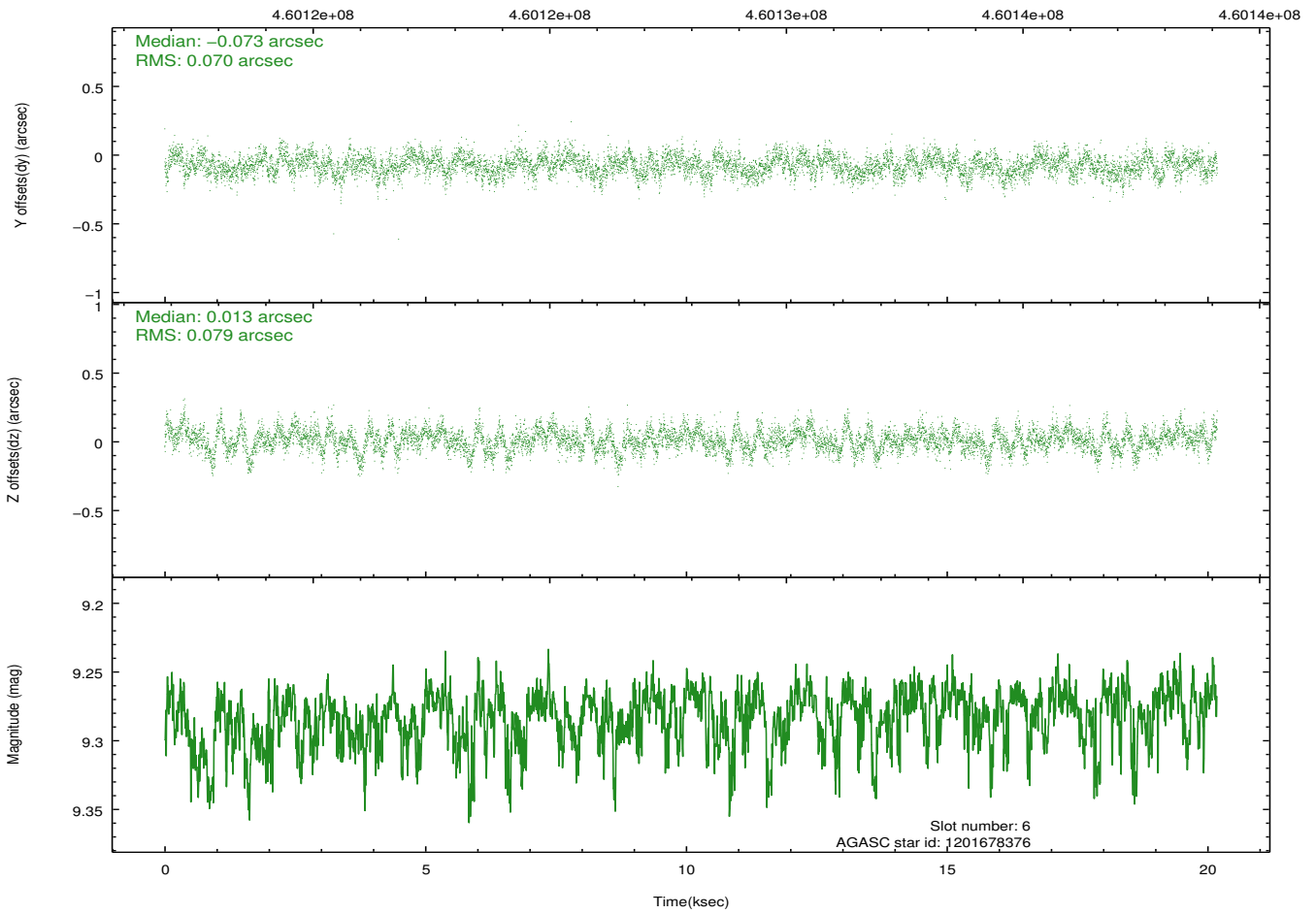
2.4.3 Slot 5



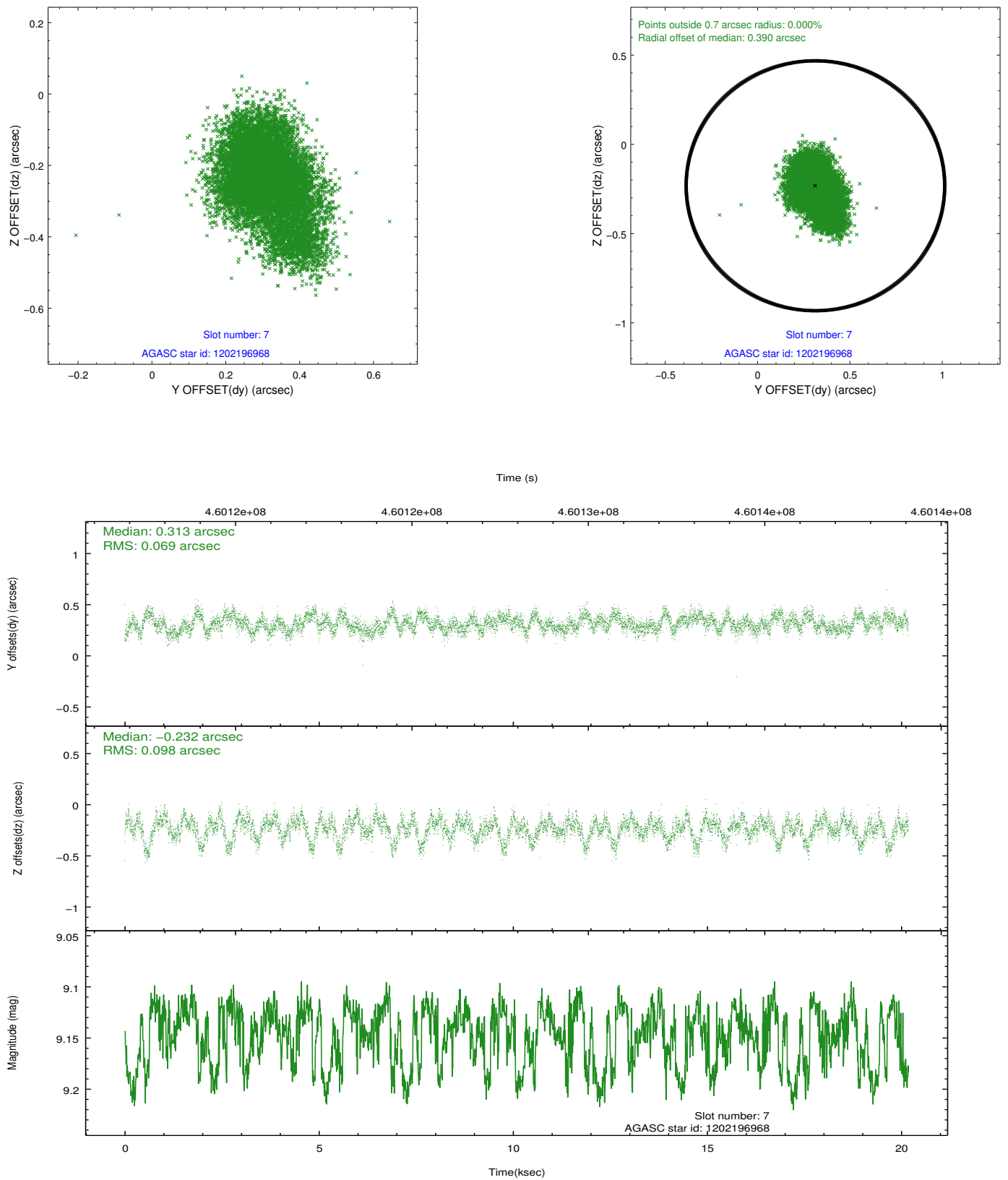
2.4.4 Slot 6



Time (s)

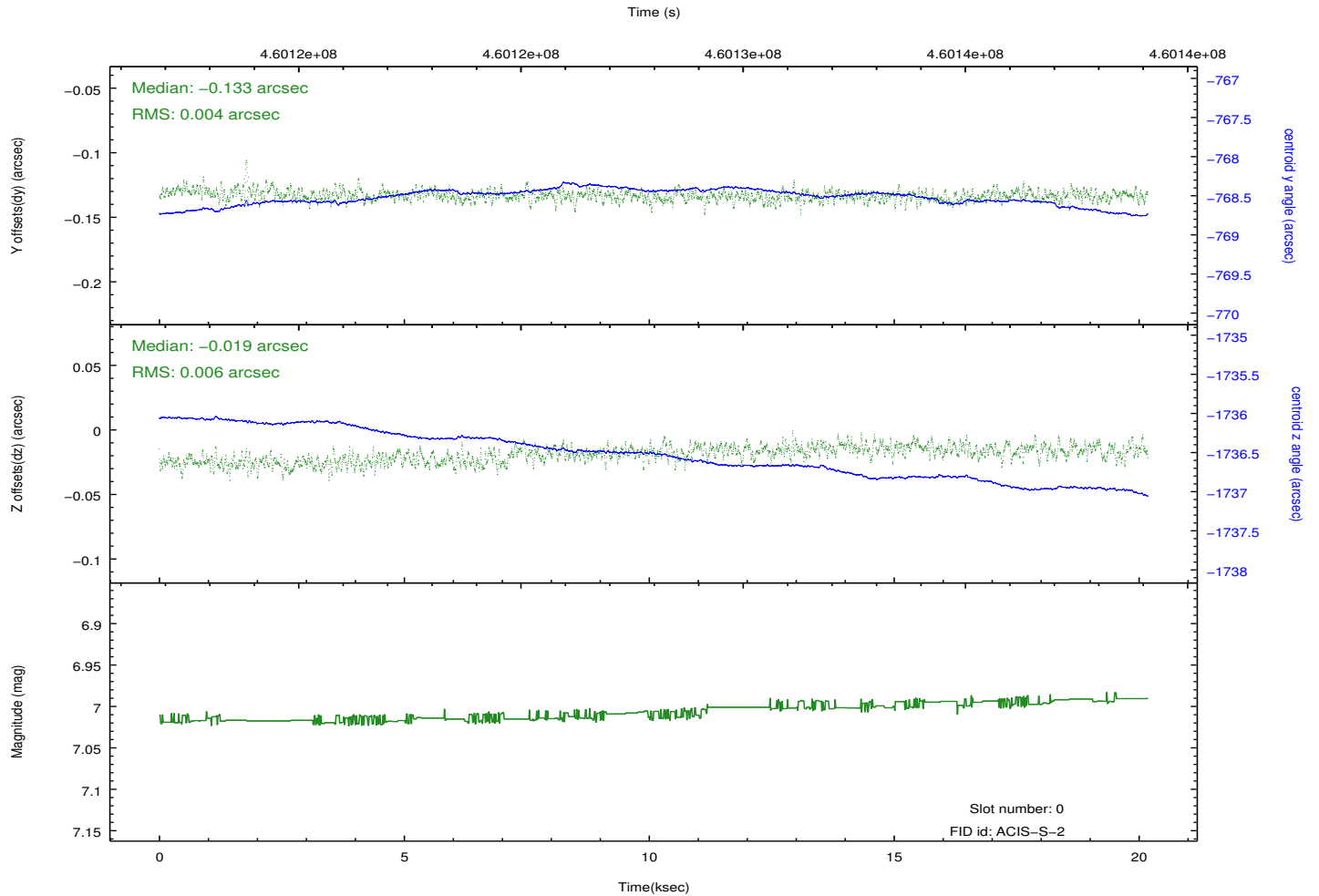
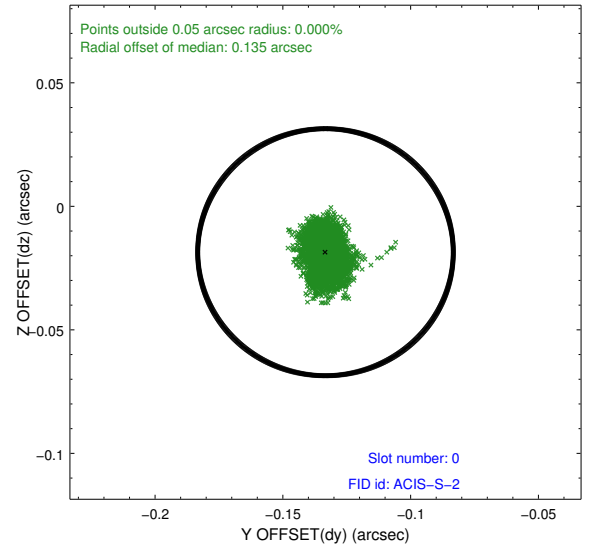
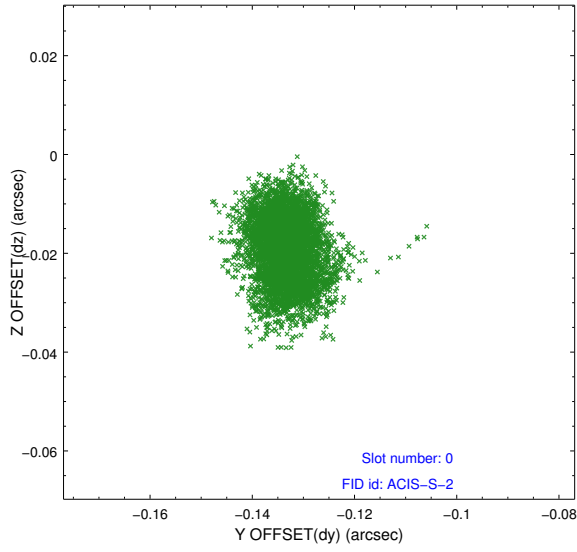


2.4.5 Slot 7

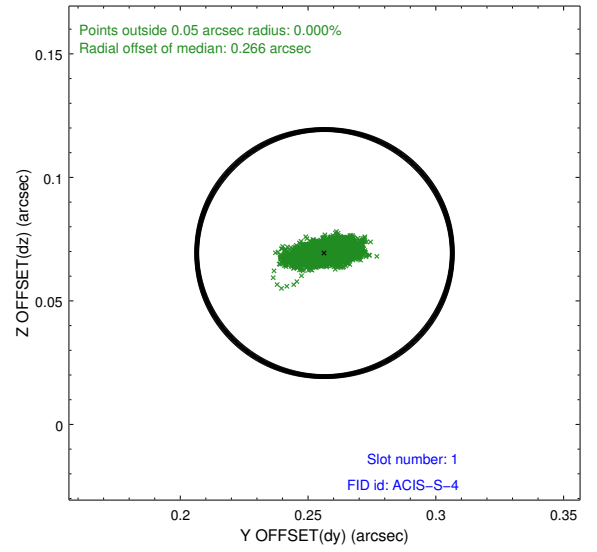
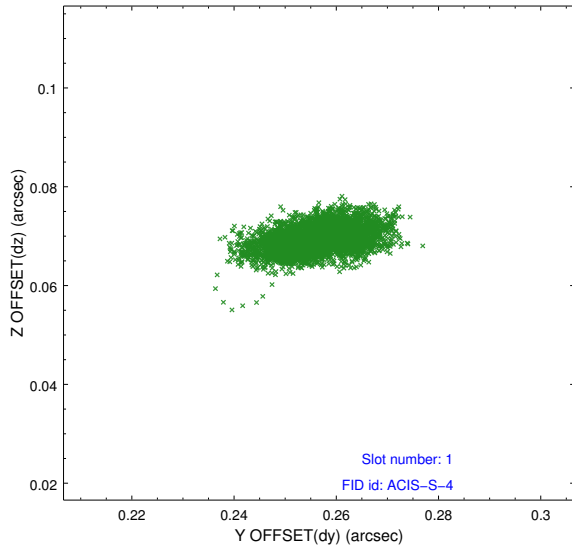


2.5 FID Slots

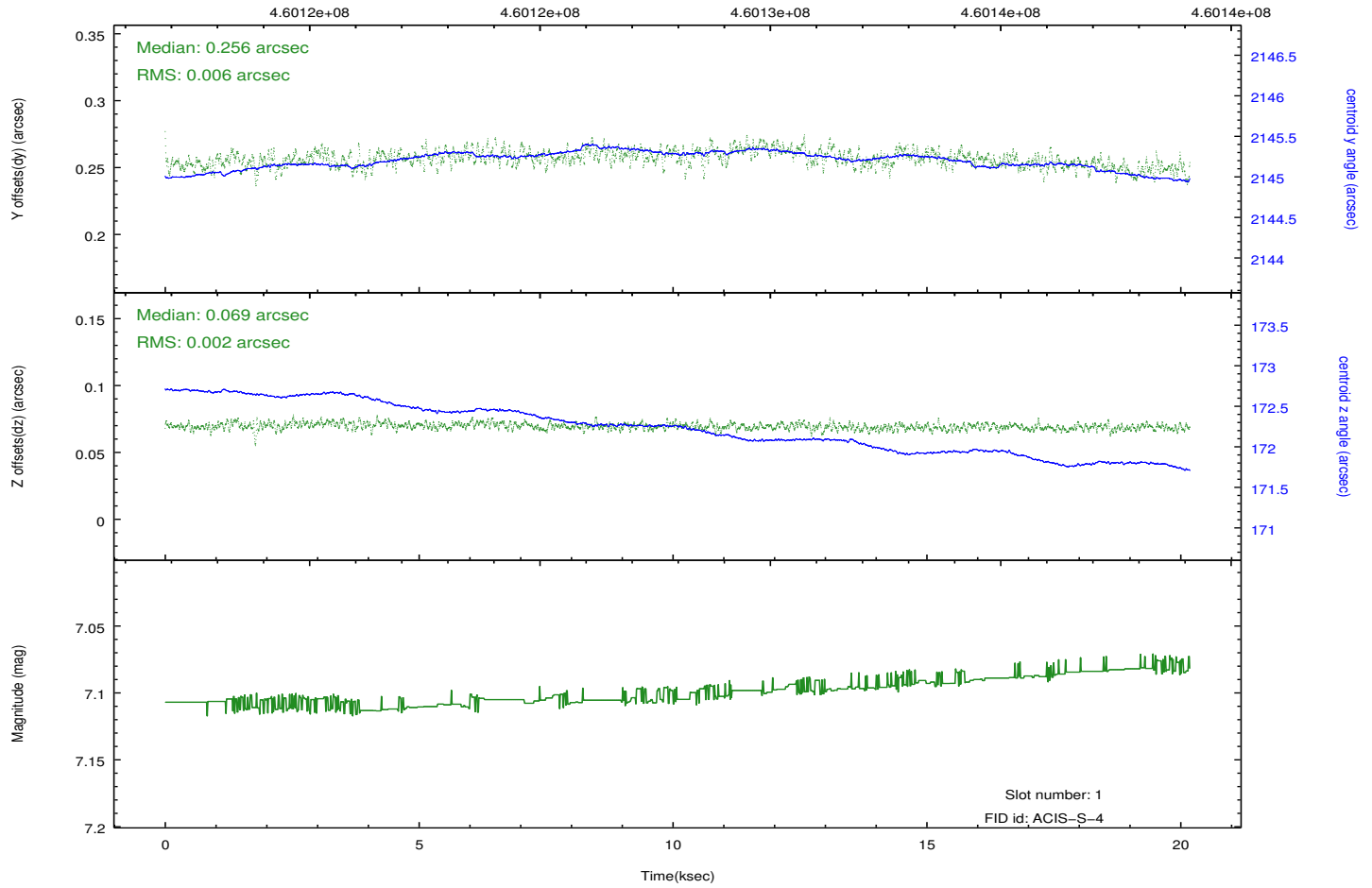
2.5.1 Slot 0



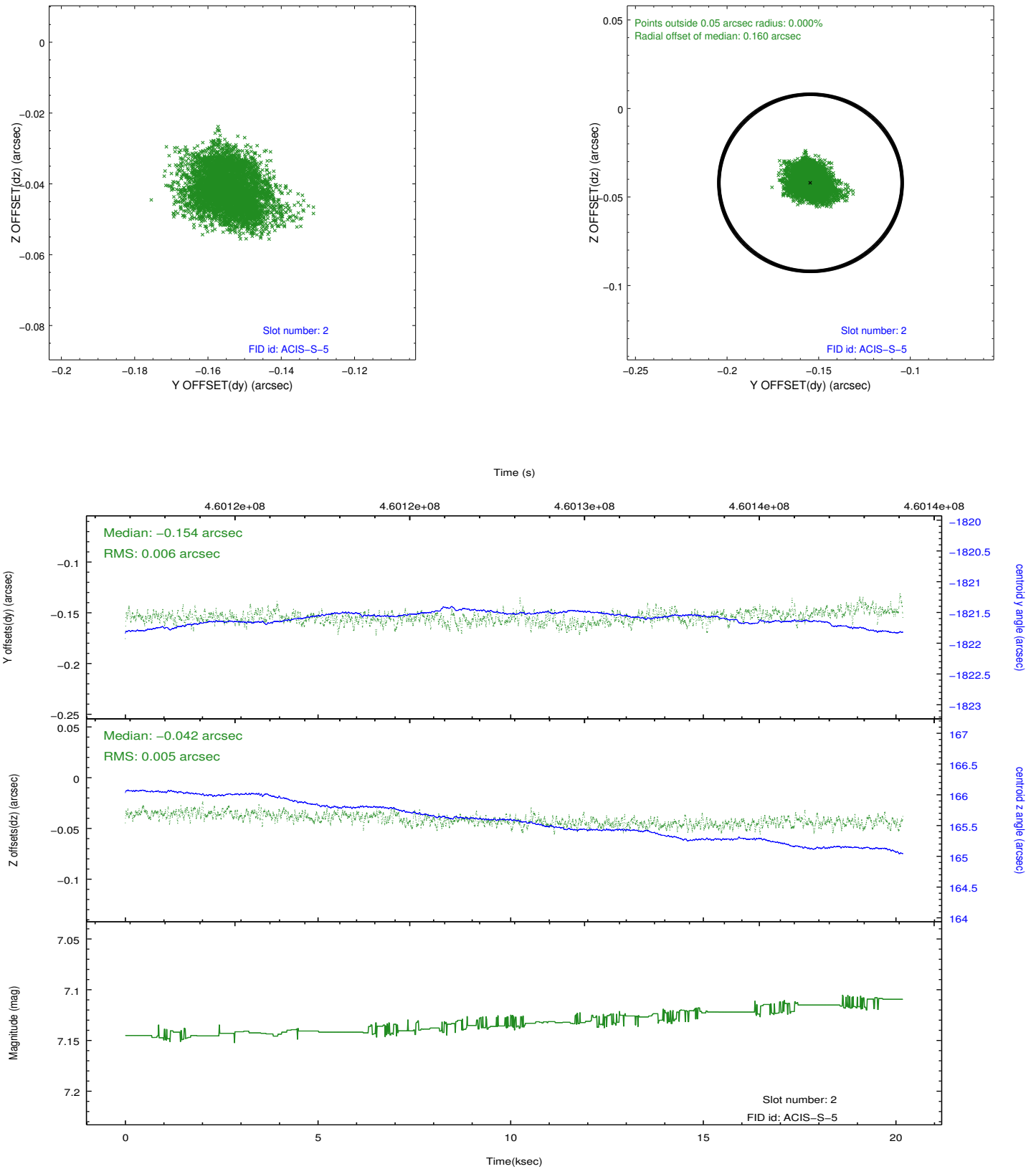
2.5.2 Slot 1



Time (s)



2.5.3 Slot 2



A Summary

A.1 Status

V&V Scientist	Joy Nichols
V&V Date (YYYY-MM-DD)	2012.08.01
V&V Edition	1
V&V Disposition and Status	OK
V&V Charge Time	20.065669392824

A.2 Comments

Joint proposal with HST.