

V&V Reference Report

L2 ASCDS Version : 10.2.4

Observation 17169 - L2 Version 1
Chandra X-Ray Center

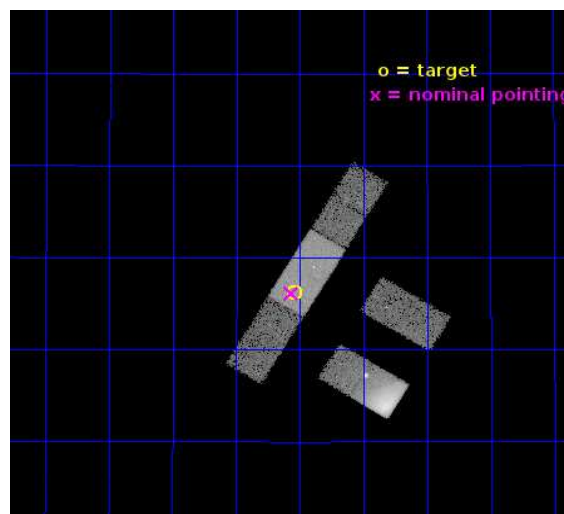
L2 Processing Date : Oct 5 2014

Contents

1	Front	2
2	OBI	3
2.1	OBI	3
2.1.1	Images	3
2.1.2	Bias	3
2.1.3	Parameters	4
2.1.4	Events	4
2.2	Compared Parameters	5
2.3	Aspect	6
2.4	Star Slots	9
2.4.1	Slot 3	9
2.4.2	Slot 4	10
2.4.3	Slot 5	11
2.4.4	Slot 6	12
2.4.5	Slot 7	13
2.5	FID Slots	14
2.5.1	Slot 0	14
2.5.2	Slot 1	15
2.5.3	Slot 2	16
A	Summary	17
A.1	Status	17
A.2	Comments	17

1 Front

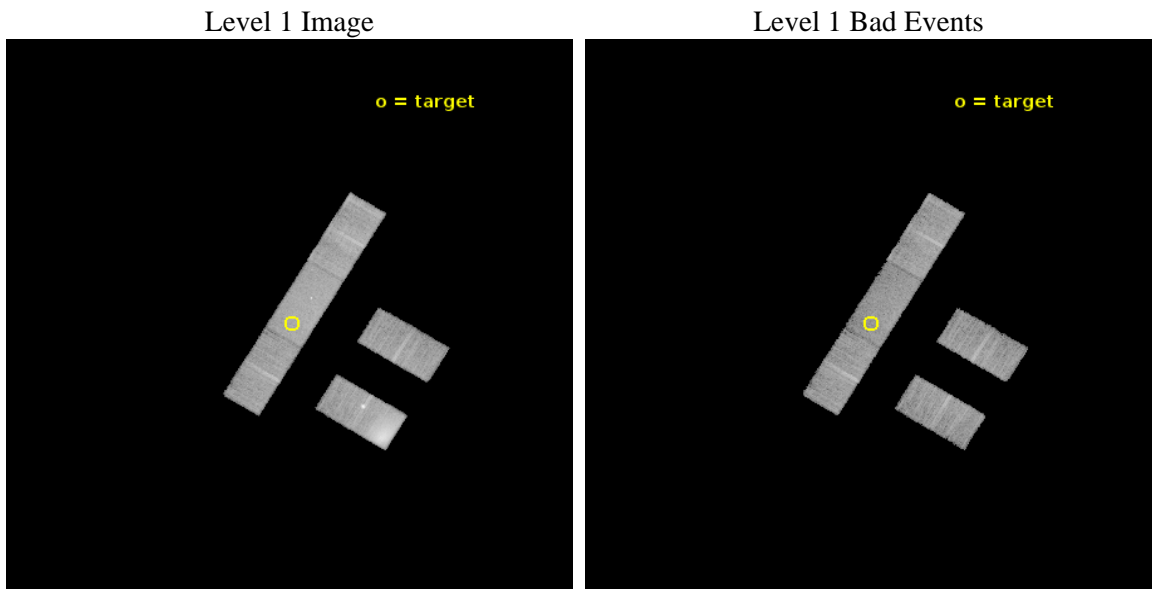
seq_num	801455	Sequence number
obs_id	17169	Observation id
title	Ram-pressure stripping and ICM physics in an infalling galaxy group	
observer	Dr Dominique Eckert	Principal investigator
object	A2142 NE	Source name
dtcycle	0	
cycle	P	events from which exps? Prim/Second/Both
ra_targ	239.760833	Observer's specified target RA [deg]
dec_targ	27.4375	Observer's specified target Dec [deg]
ra_nom	239.76658804123	Nominal RA [deg]
dec_nom	27.435647497131	Nominal Dec [deg]
roll_nom	301.15391799221	Nominal Roll [deg]
revision	1	Processing version of data
ontime	20063.399859369	Sum of GTIs [s]
livetime	19590.463034122	Livetime [s]
ontime2	20063.399859369	Sum of GTIs [s]
ontime3	20063.399859369	Sum of GTIs [s]
ontime6	20063.399859369	Sum of GTIs [s]
ontime7	20063.399859369	Sum of GTIs [s]
ontime8	20063.399859369	Sum of GTIs [s]
l2events	101020	Number of level 2 events



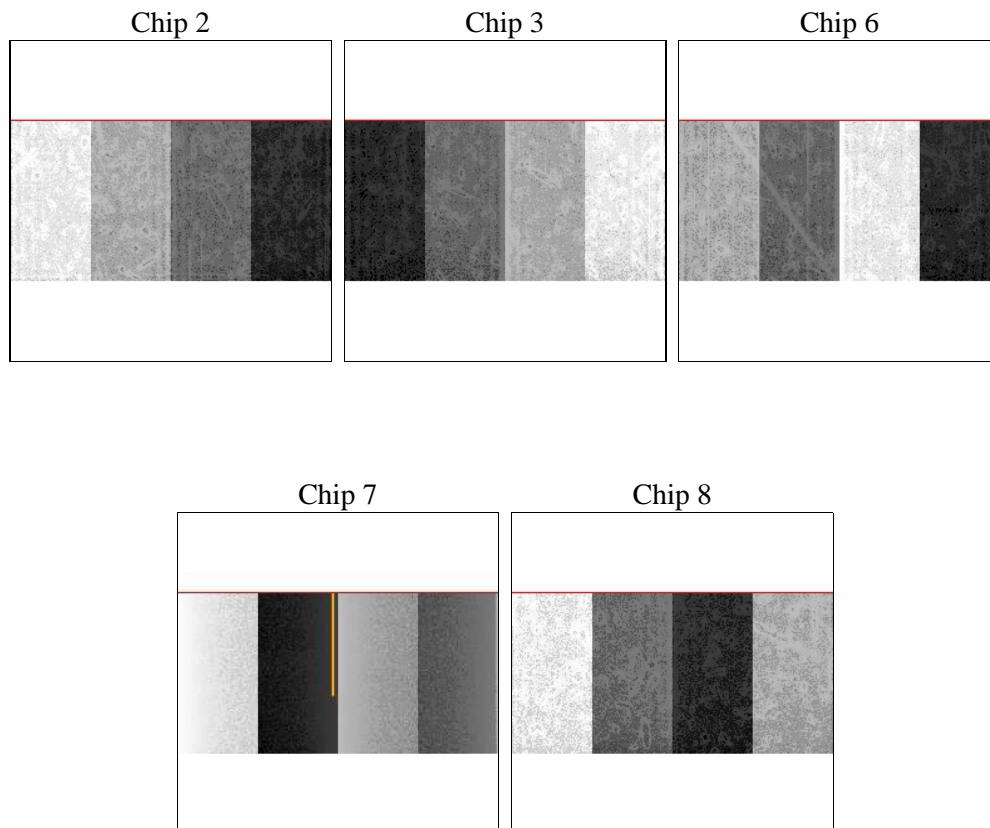
2 OBI

2.1 OBI

2.1.1 Images



2.1.2 Bias



2.1.3 Parameters

obi_num	0	Obi number	sched_exp_time	20000.000000	[s] Scheduled observation exposure time
ascdsver	10.2.4	Processing system revision	ontime	20063.399859369	Sum of GTIs [s]
caldsver	4.6.3	 	ontime2	20063.399859369	Sum of GTIs [s]
date	2014-10-05T12:10:08	Date and time of file creation	ontime3	20063.399859369	Sum of GTIs [s]
revision	1	Processing version of data	ontime6	20063.399859369	Sum of GTIs [s]
			ontime7	20063.399859369	Sum of GTIs [s]
			ontime8	20063.399859369	Sum of GTIs [s]
			l1events	350146	Number of level 1 events

2.1.4 Events

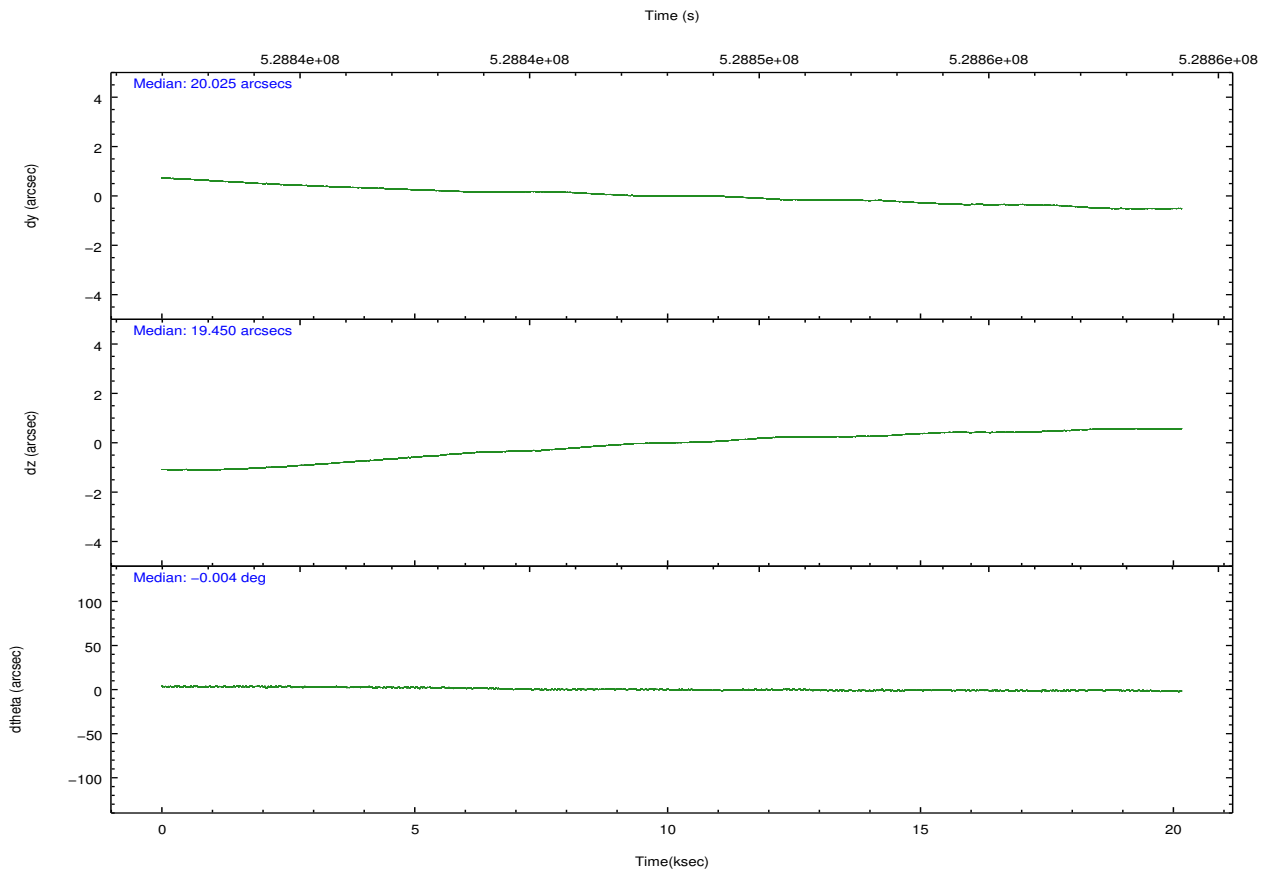
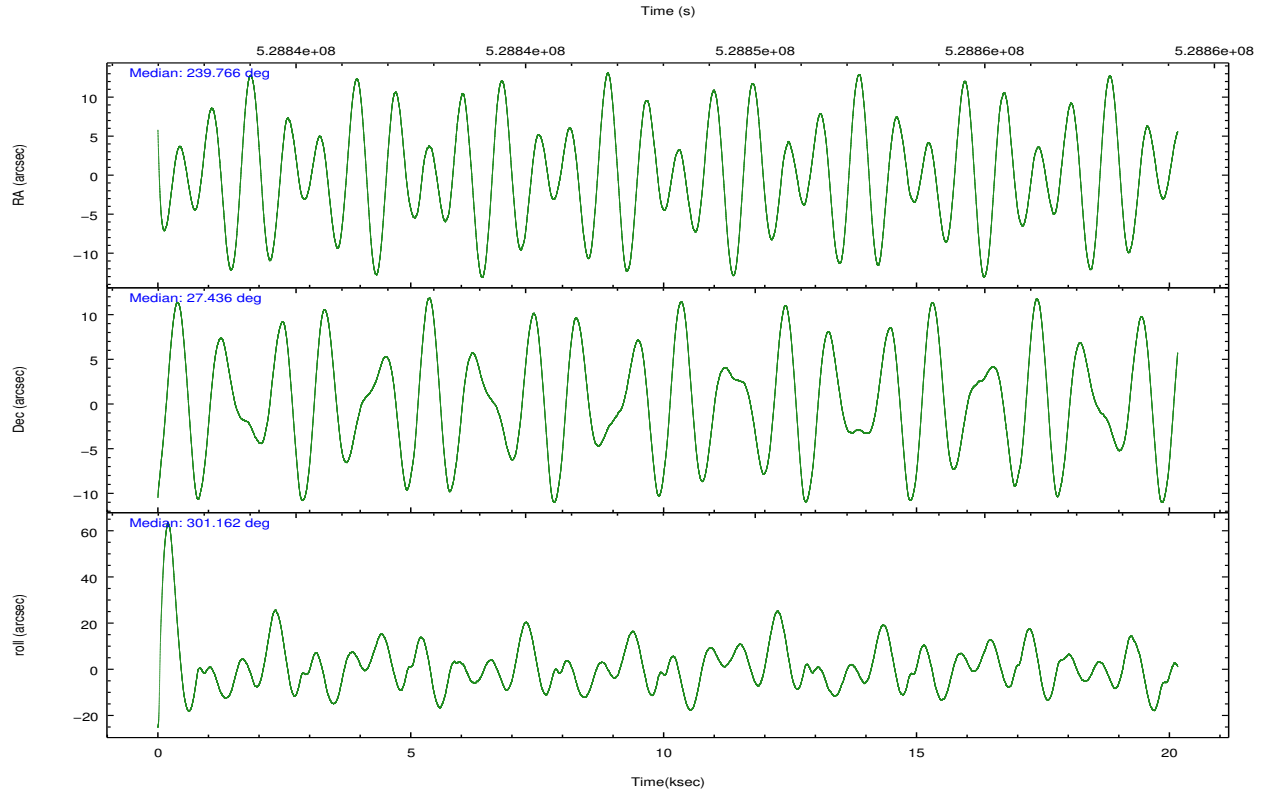
	ccd 2	ccd 3	ccd 6	ccd 7	ccd 8
level 1 events	100979	51946	55363	70698	71160
rejected events	44944	44723	48345	38707	53191
rejected %	44%	86%	87%	54%	74%

	ccd 2	ccd 3	ccd 6	ccd 7	ccd 8
grade 0 events	42346	2955	2493	3193	5342
	41%	5%	4%	4%	7%
grade 1 events	108	33	19	59	34
	0%	0%	0%	0%	0%
grade 2 events	6671	1347	1411	6671	4154
	6%	2%	2%	9%	5%
grade 3 events	2263	869	789	3036	1822
	2%	1%	1%	4%	2%
grade 4 events	2327	756	838	2867	1737
	2%	1%	1%	4%	2%
grade 5 events	2190	2684	2607	7068	3835
	2%	5%	4%	9%	5%
grade 6 events	2439	1298	1489	16233	4919
	2%	2%	2%	22%	6%
grade 7 events	42635	42004	45717	31571	49317
	42%	80%	82%	44%	69%

2.2 Compared Parameters

Parameter	Planned	Actual	Parameter	Planned	Actual
Instrument	ACIS	ACIS	Obspar format version number	7	7
Detector	ACIS-23678	ACIS-23678	Obspar file type	PREDICTED	ACTUAL
Grating	NONE	NONE	Obspar update status	NONE	UPDATED
Data mode	VFAINT	VFAINT	CCD I0 on	N	N
Observation mode	POINTING	POINTING	CCD I1 on	N	N
[deg] Pointing RA	239.739309	239.7665880412343	CCD I2 on	O2	Y
[deg] Pointing Dec	27.448571	27.43564749713071	CCD I3 on	O1	Y
[deg] Pointing Roll	301.009927	301.1539179922135	CCD S0 on	N	N
[mm] SIM focus pos	-0.684267	-0.6828225247311905	CCD S1 on	N	N
[mm] SIM defocus	0	0.001444936568705701	CCD S2 on	Y	Y
[mm] SIM translation stage pos	-190.132523	-190.1425803651734	CCD S3 on	Y	Y
[mm] SIM translation stage offset	0	0.01005778216563158	CCD S4 on	Y	Y
[s] Observation start time (MET)	528838181.184000	528836909.40278	CCD S5 on	N	N
Observation start date	2014-10-04T19:28:34	2014-10-04T19:08:29	Number of optional ACIS chips dropped	0	0
[s] Observation end time (MET)	528858181.184000	528858935.11651	On-chip summing requested	N	N
Observation end date	2014-10-05T01:01:54	2014-10-05T01:15:35	Subarray requested	CUSTOM	1/2
Read mode	TIMED	TIMED	Subarray start row	257	257
			Subarray row count	512	512
			Alternating exposures requested	N	N
			[s] Primary exposure time	0.000000	1.7

2.3 Aspect

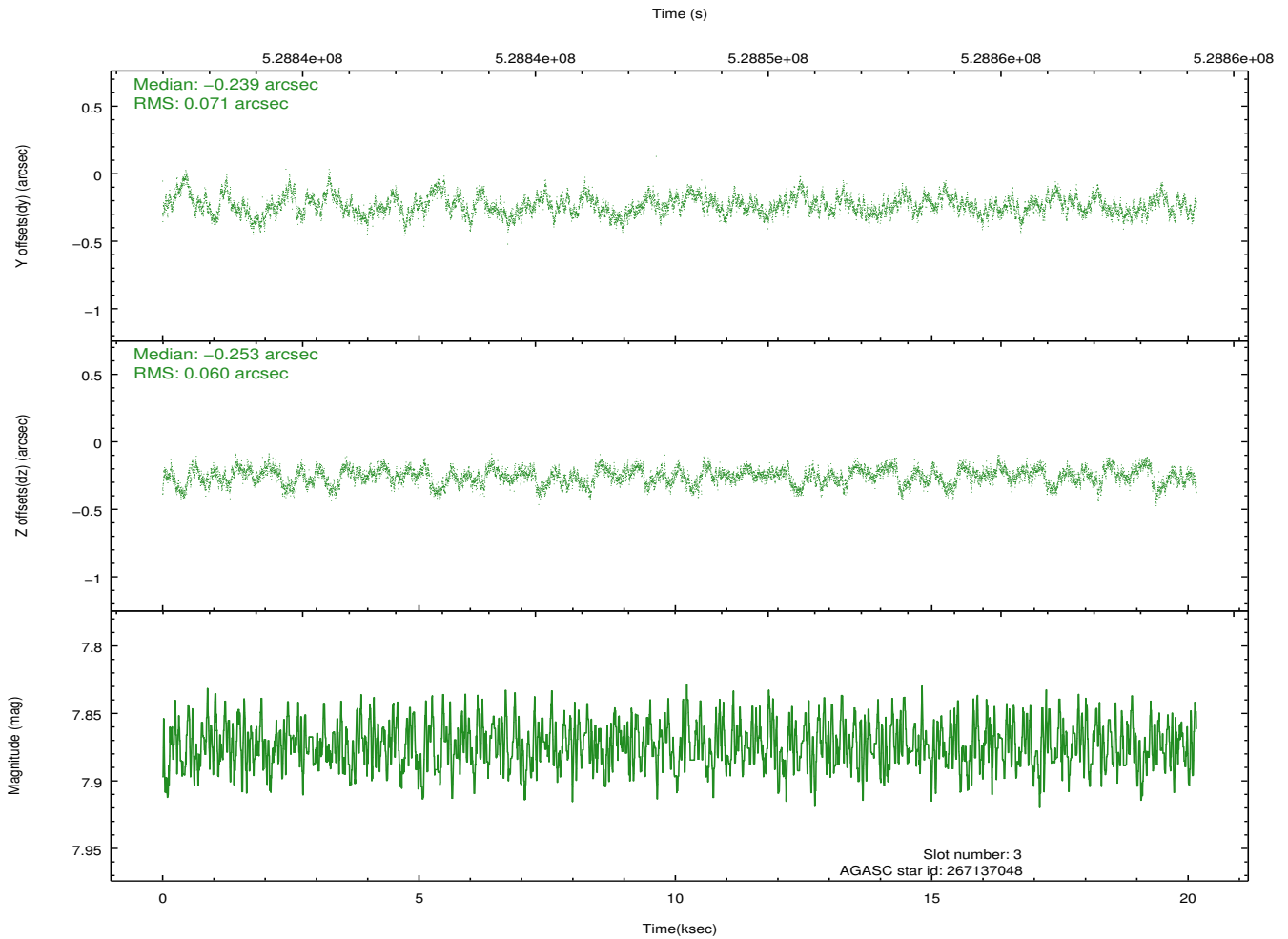
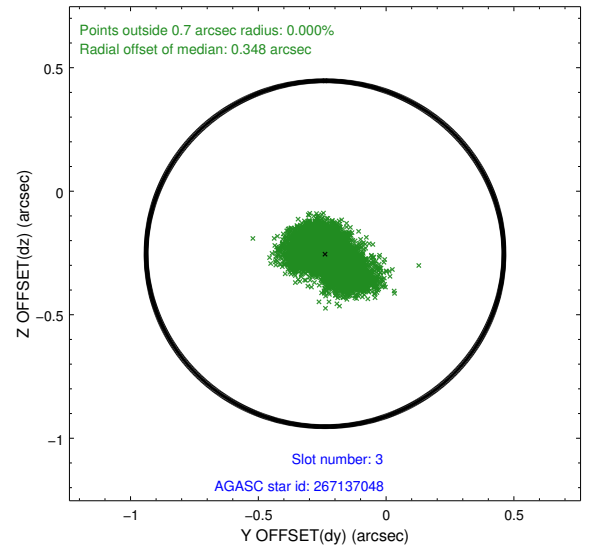
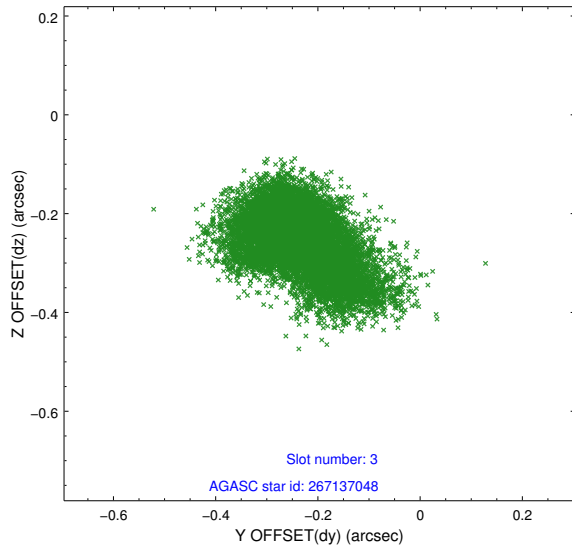


Slot Statistics

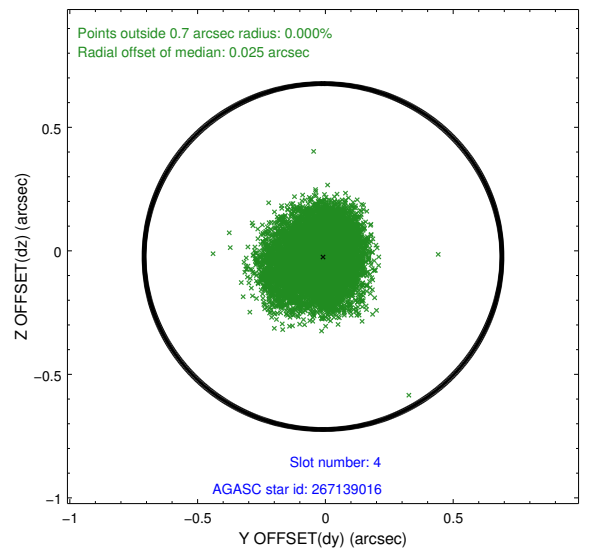
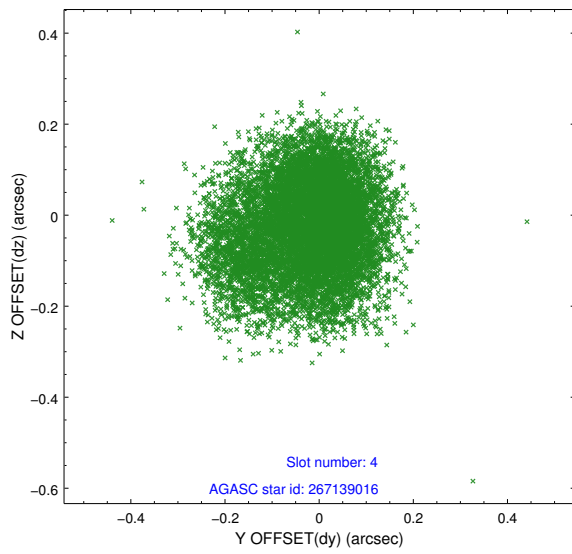
slot	status	id	mag	n_pts	med_dy	med_dz	dr1	dr2	ra	dec	mean_y	mean_z
0	FID	ACIS-S-2	7.07	4918	-0.149	-0.045	0.021	0.036	0.000000	0.000000	-773.30	-1740.81
1	FID	ACIS-S-4	7.16	4918	0.297	0.084	0.007	0.013	0.000000	0.000000	2140.35	167.59
2	FID	ACIS-S-5	7.19	4918	-0.180	-0.032	0.017	0.033	0.000000	0.000000	-1825.93	161.38
3	GUIDE	267137048	7.87	9831	-0.239	-0.253	0.096	0.166	240.280451	27.143889	1829.73	922.74
4	GUIDE	267139016	9.13	9831	-0.009	-0.023	0.142	0.225	240.326918	27.469213	899.97	1649.81
5	GUIDE	267530640	9.68	9826	-0.030	-0.023	0.149	0.240	240.062853	28.117718	-1536.13	2123.27
6	GUIDE	267004928	9.07	9829	-0.008	0.166	0.173	0.334	239.711277	26.663193	2376.58	-1533.30
7	GUIDE	267398208	10.27	9817	0.291	0.152	0.267	0.453	239.207175	27.898400	-2263.24	-614.26

2.4 Star Slots

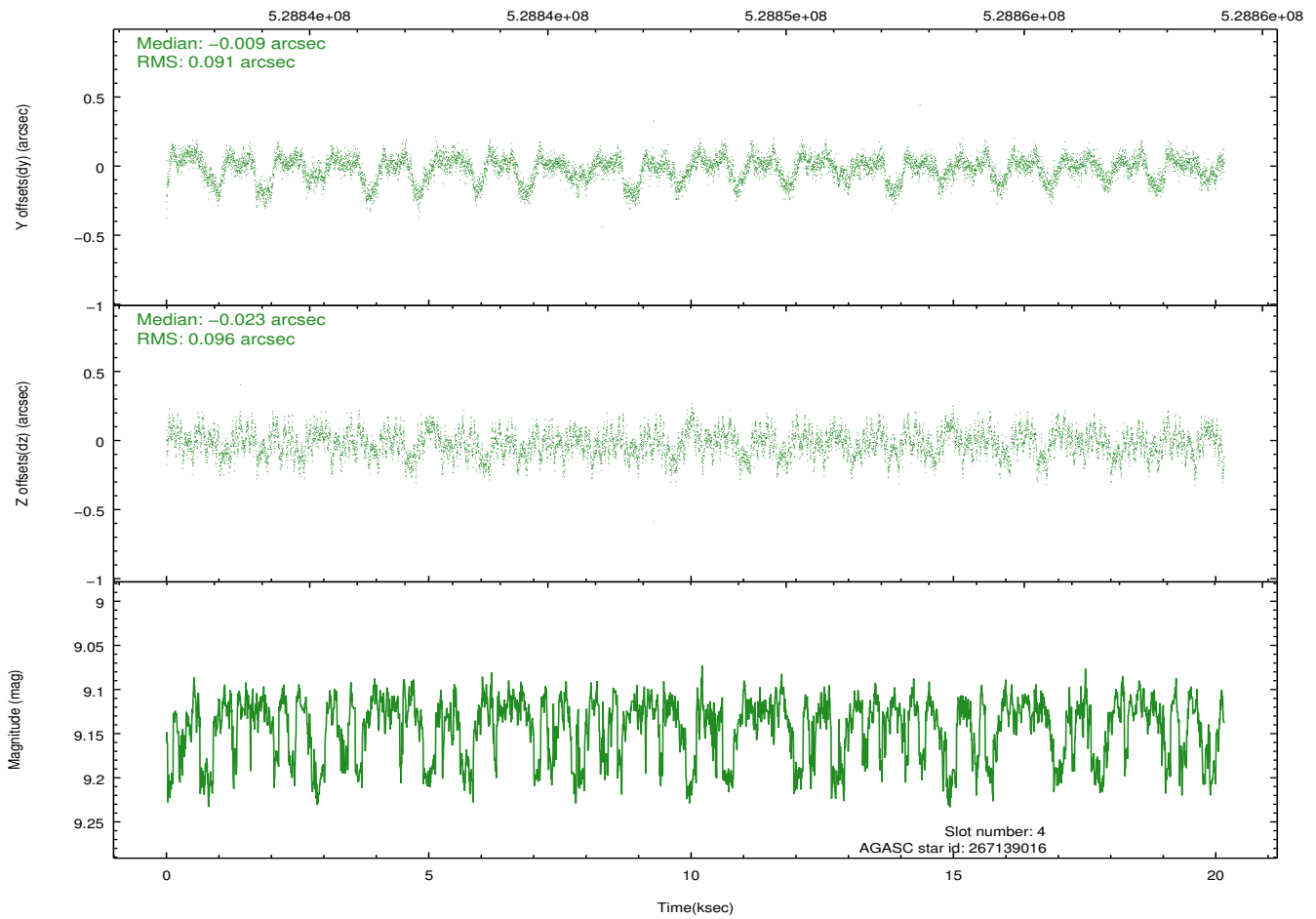
2.4.1 Slot 3



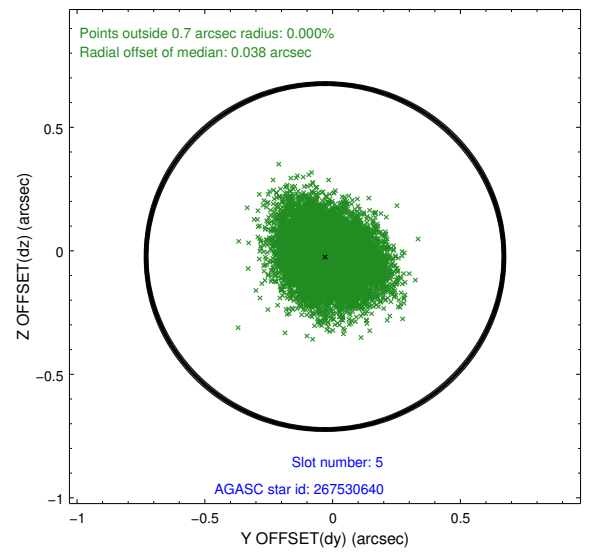
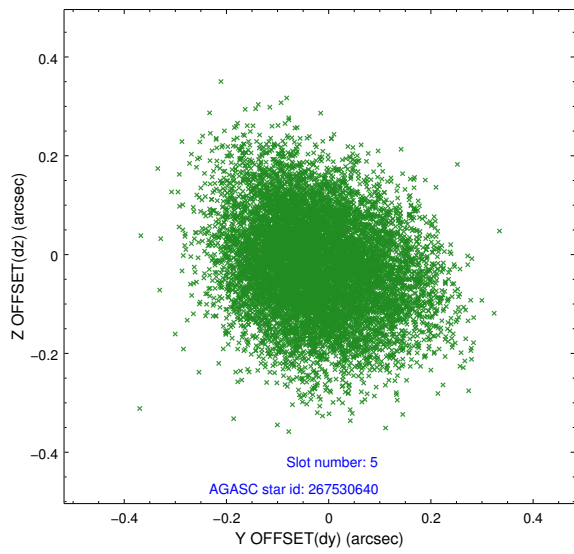
2.4.2 Slot 4



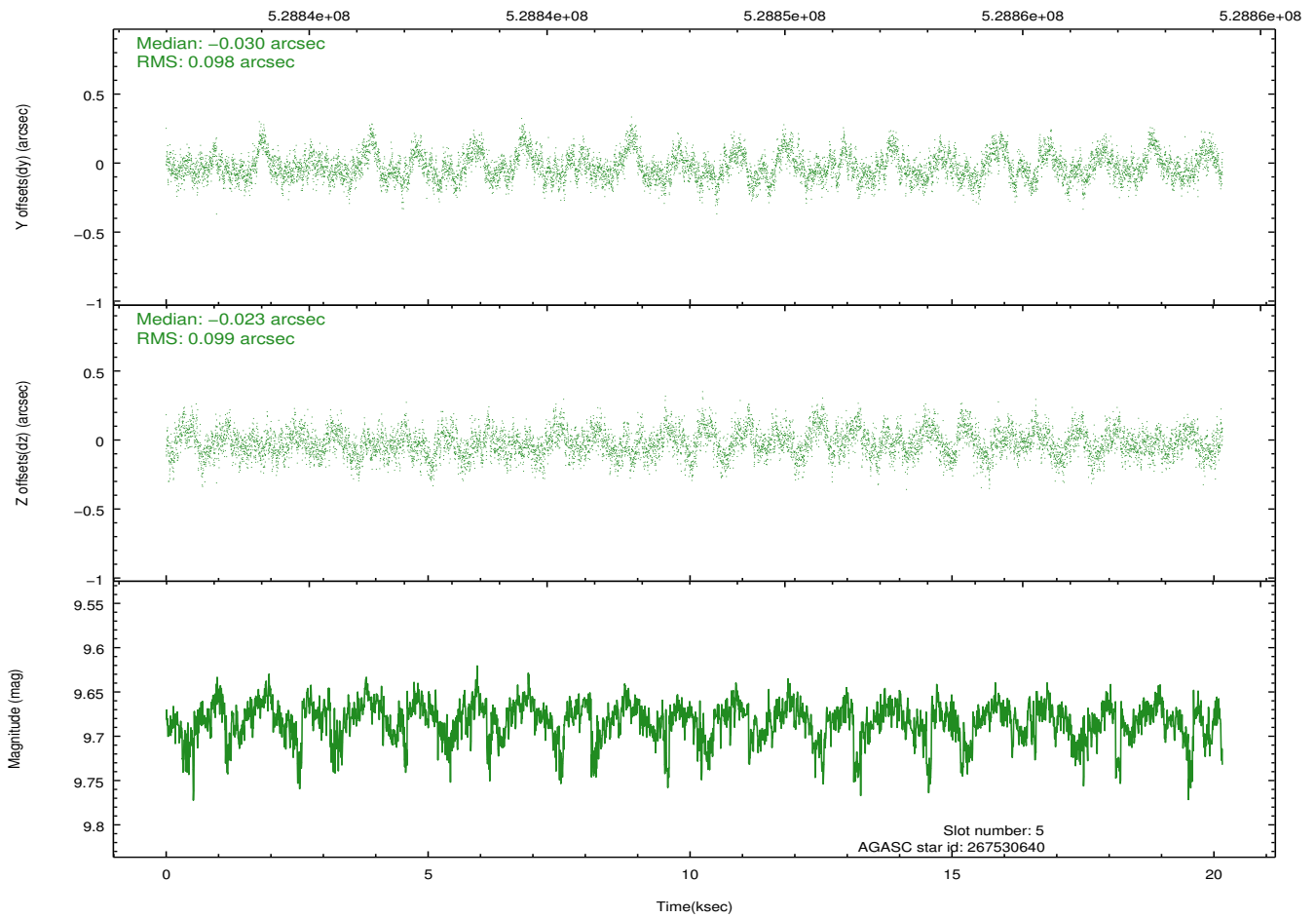
Time (s)



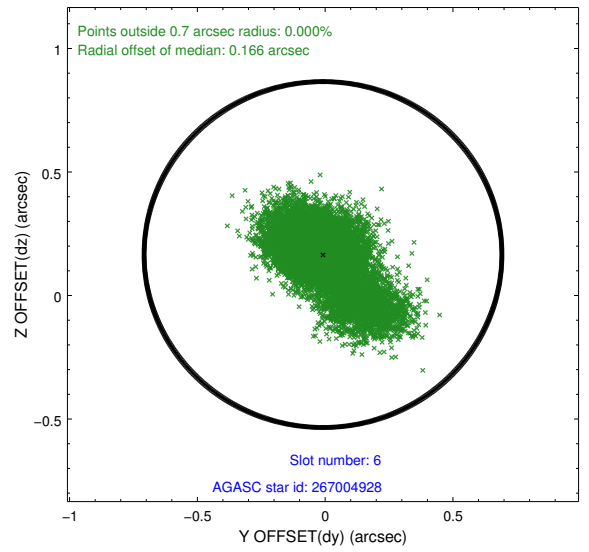
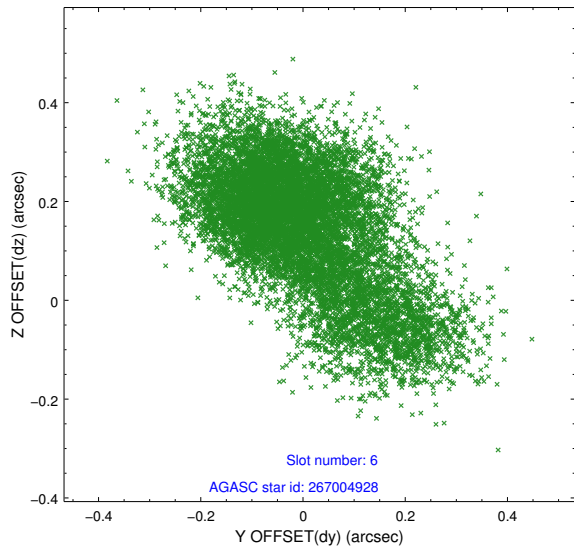
2.4.3 Slot 5



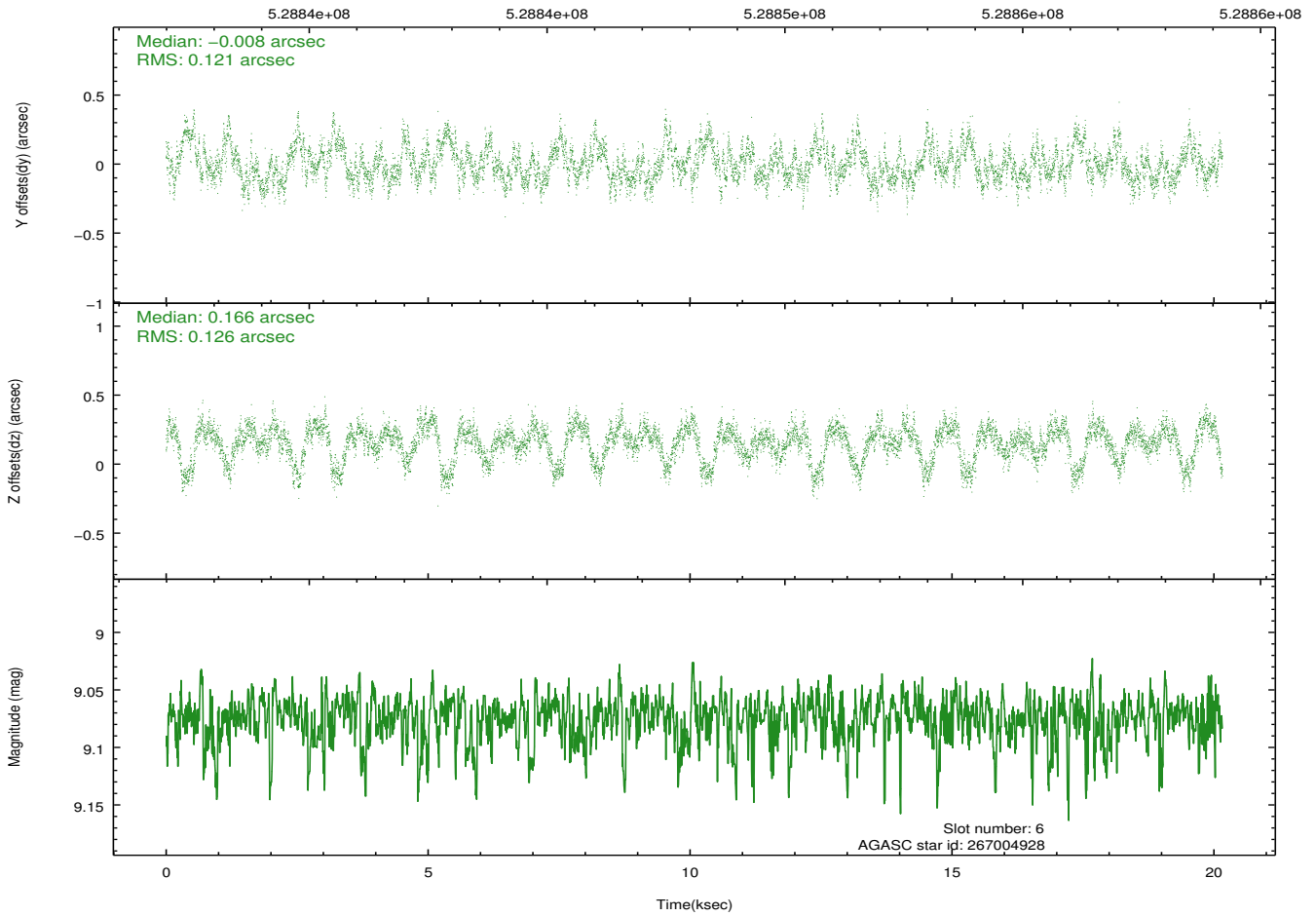
Time (s)



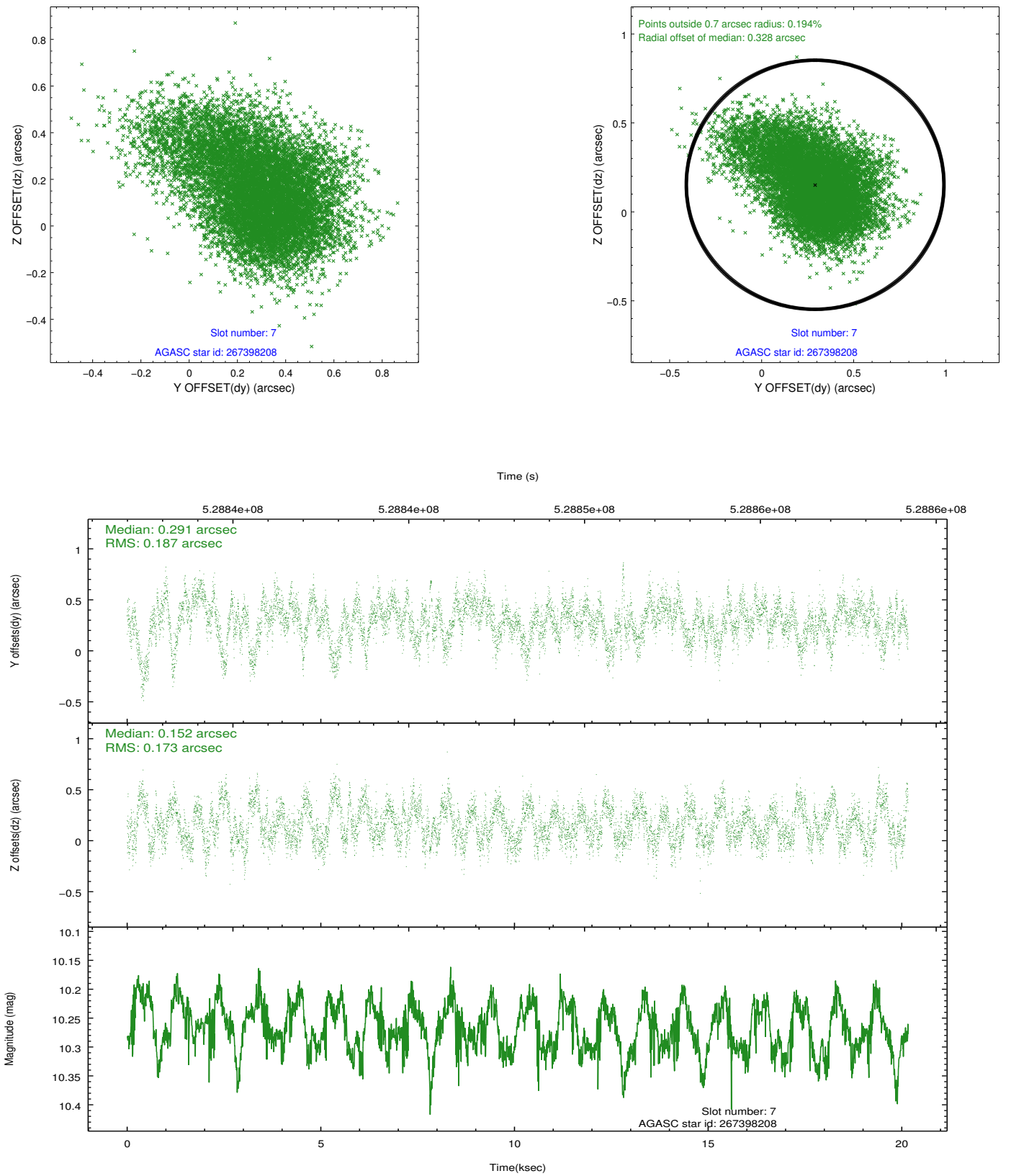
2.4.4 Slot 6



Time (s)

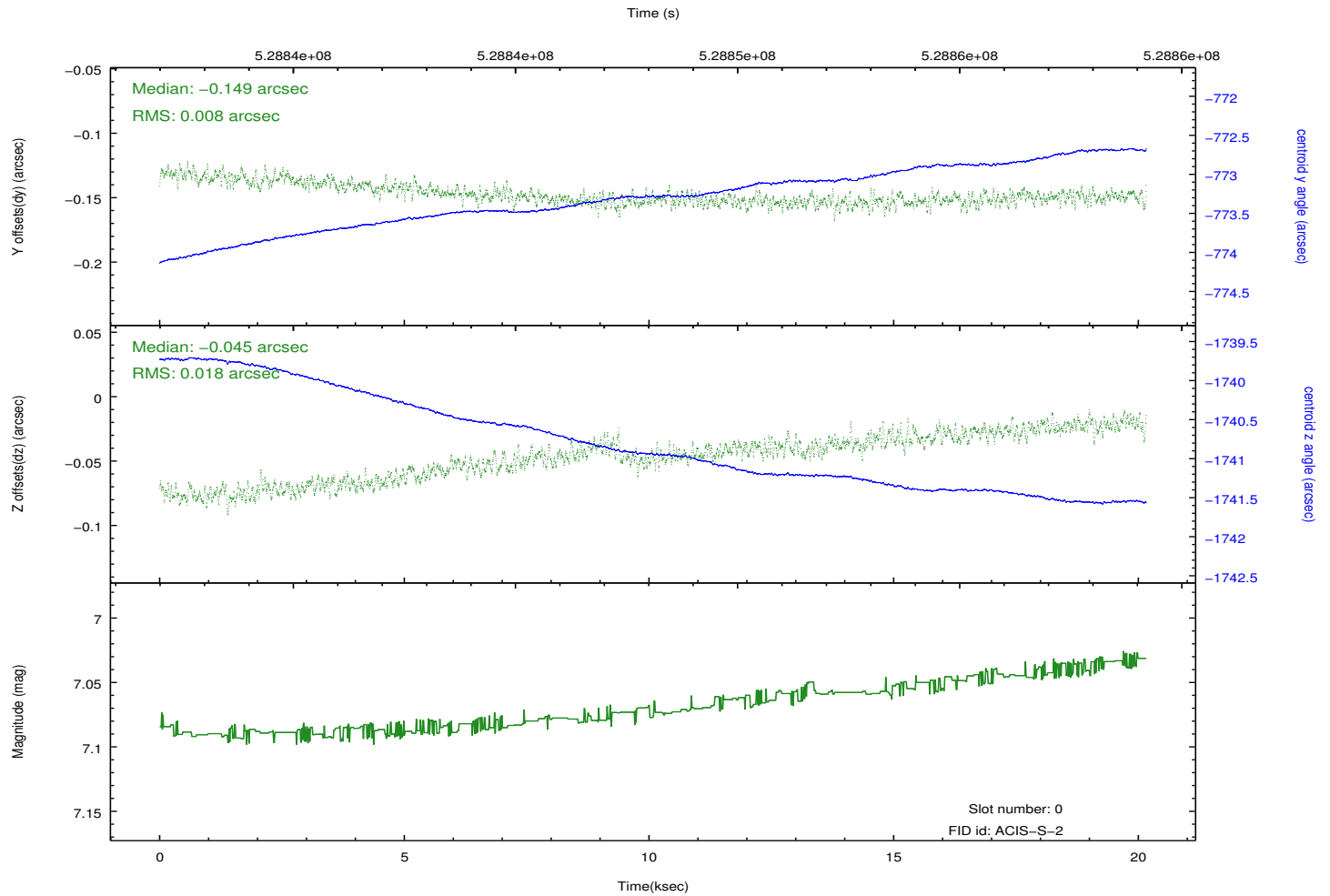
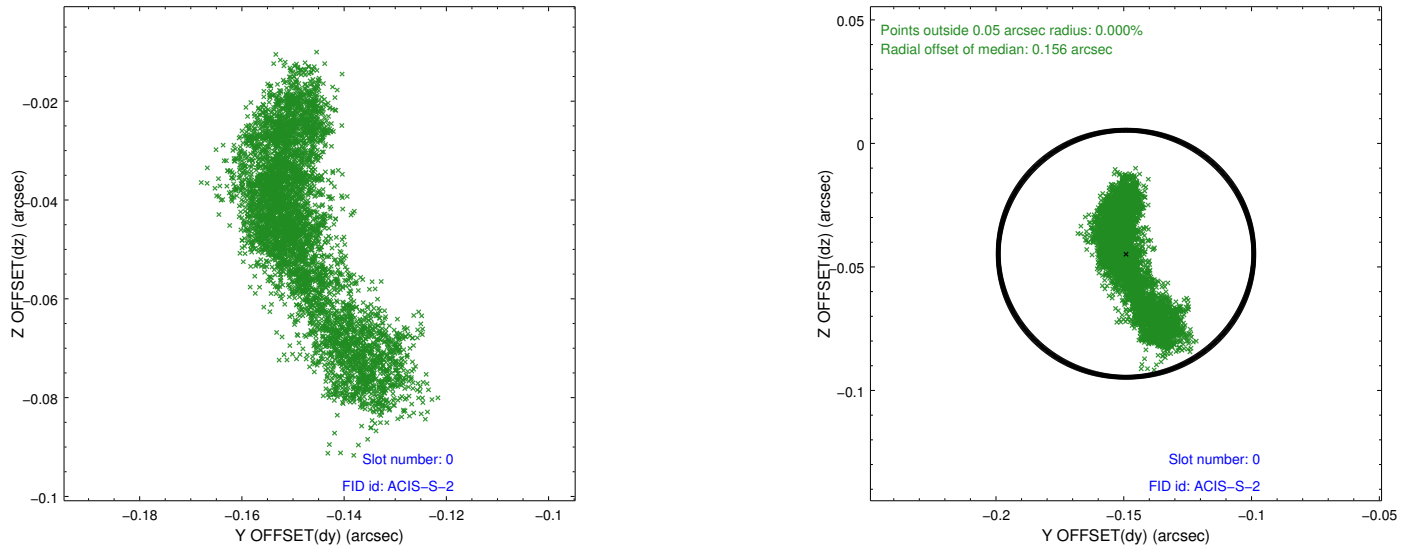


2.4.5 Slot 7

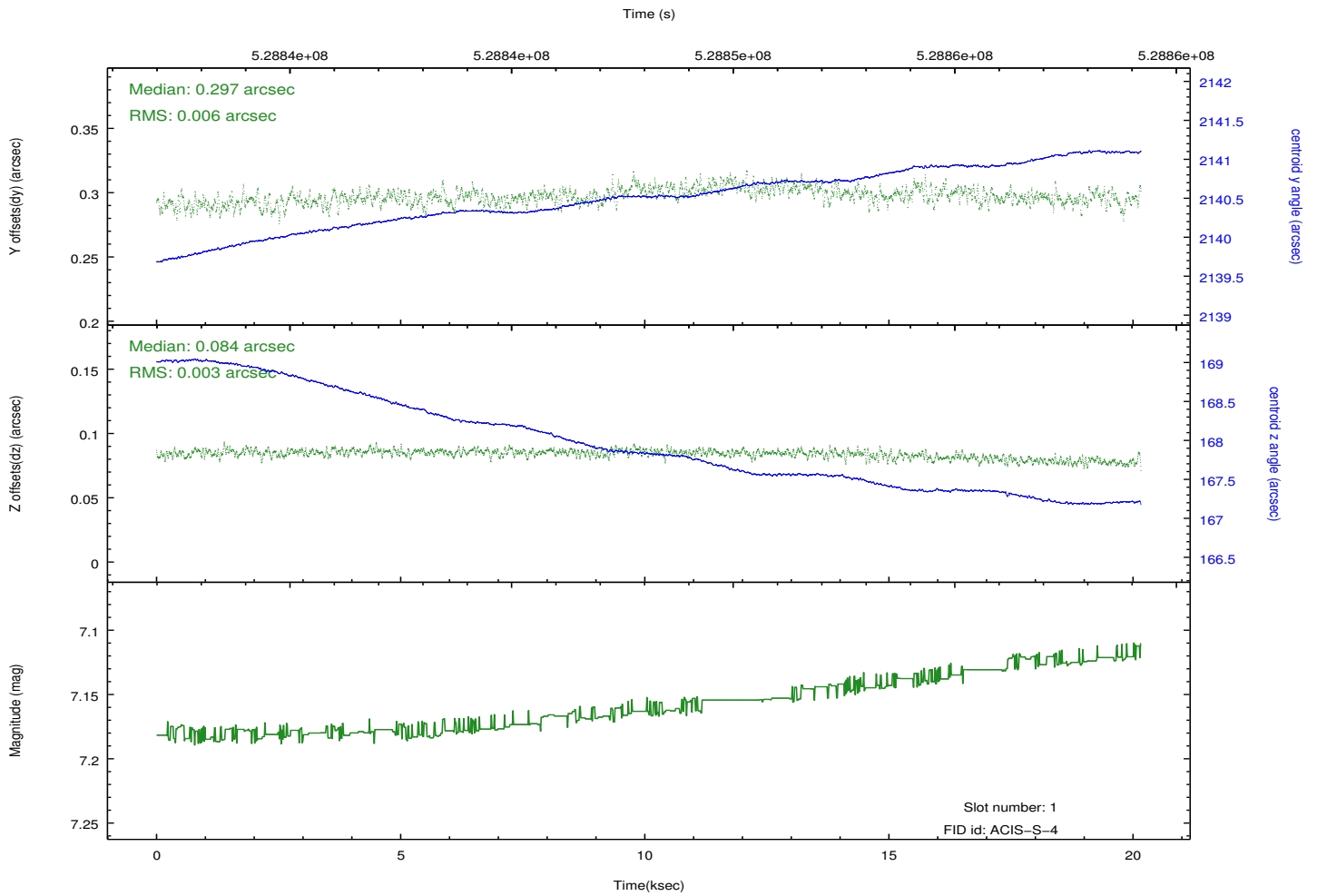
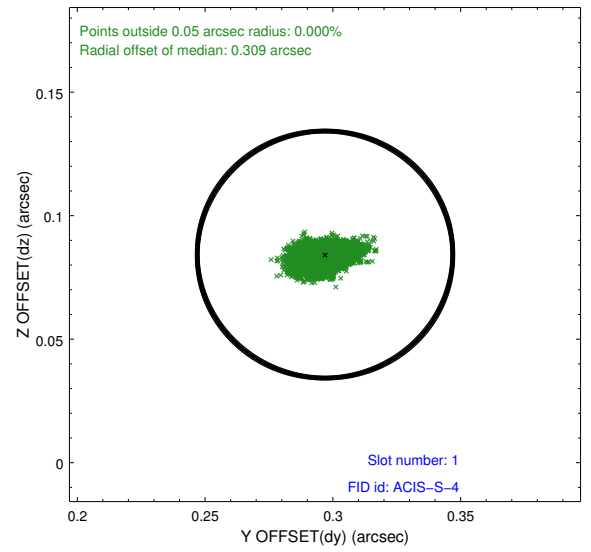
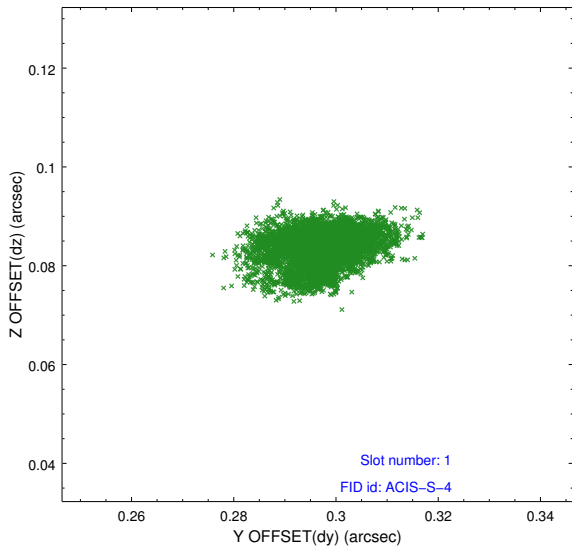


2.5 FID Slots

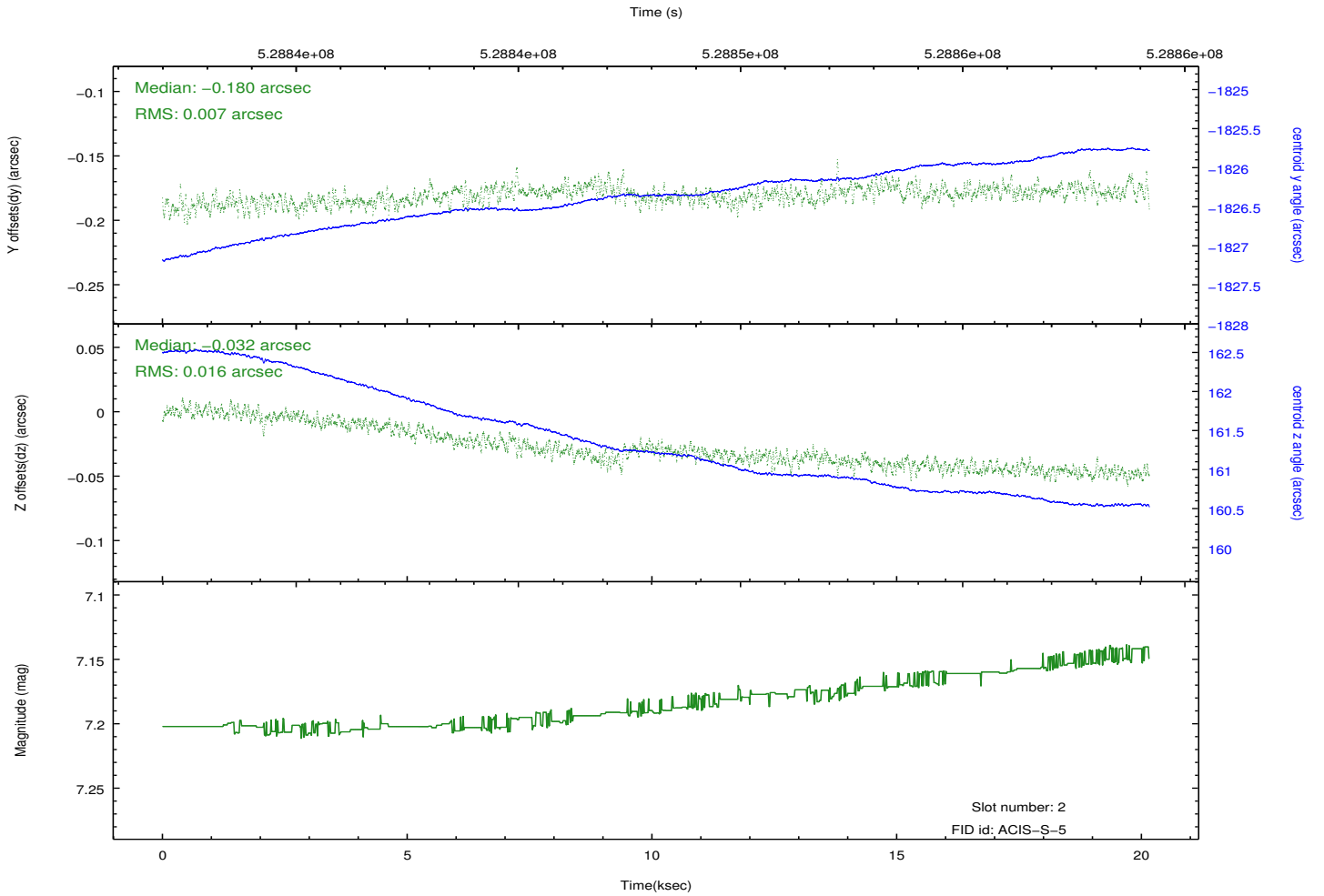
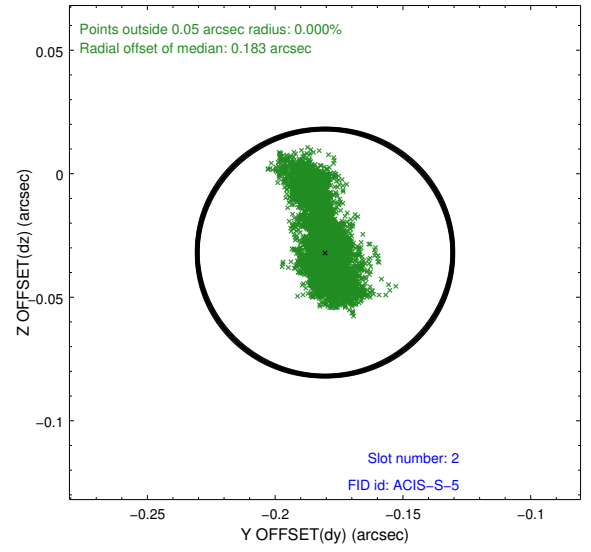
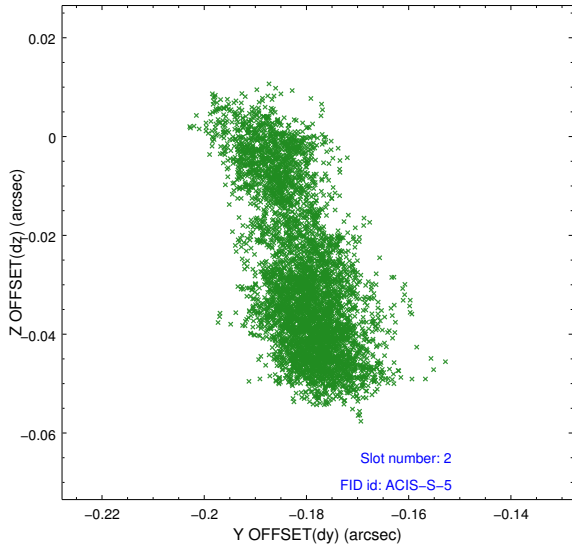
2.5.1 Slot 0



2.5.2 Slot 1



2.5.3 Slot 2



A Summary

A.1 Status

V&V Scientist	Joy Nichols
V&V Date (YYYY-MM-DD)	2014.10.06
V&V Edition	1
V&V Disposition and Status	OK
V&V Charge Time	20.063399859369

A.2 Comments