

# V&V Reference Report

## L2 ASCDS Version : 10.3.3

Observation 17379 - L2 Version 1  
Chandra X-Ray Center

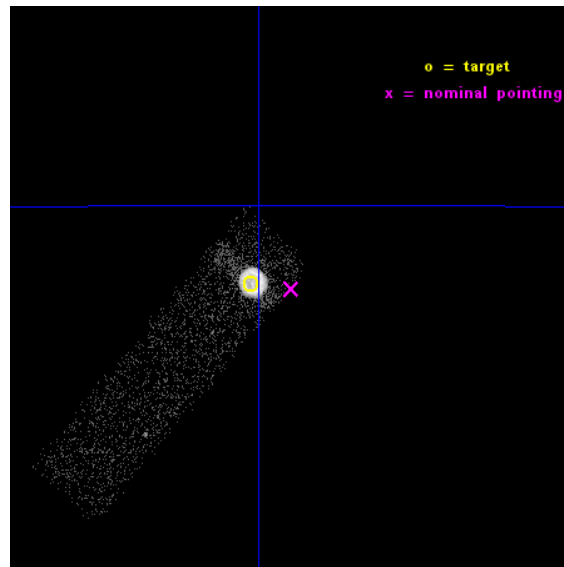
L2 Processing Date : Feb 25 2015

## Contents

<b>1</b>	<b>Front</b>	<b>2</b>
<b>2</b>	<b>OBI</b>	<b>3</b>
2.1	OBI . . . . .	3
2.1.1	Images . . . . .	3
2.1.2	Bias . . . . .	3
2.1.3	Parameters . . . . .	4
2.1.4	Events . . . . .	4
2.2	Compared Parameters . . . . .	5
2.3	Aspect . . . . .	6
2.4	Star Slots . . . . .	9
2.4.1	Slot 3 . . . . .	9
2.4.2	Slot 4 . . . . .	10
2.4.3	Slot 5 . . . . .	11
2.4.4	Slot 6 . . . . .	12
2.4.5	Slot 7 . . . . .	13
2.5	FID Slots . . . . .	14
2.5.1	Slot 0 . . . . .	14
2.5.2	Slot 1 . . . . .	15
2.5.3	Slot 2 . . . . .	16
<b>A</b>	<b>Summary</b>	<b>17</b>
A.1	Status . . . . .	17
A.2	Comments . . . . .	17

# 1 Front

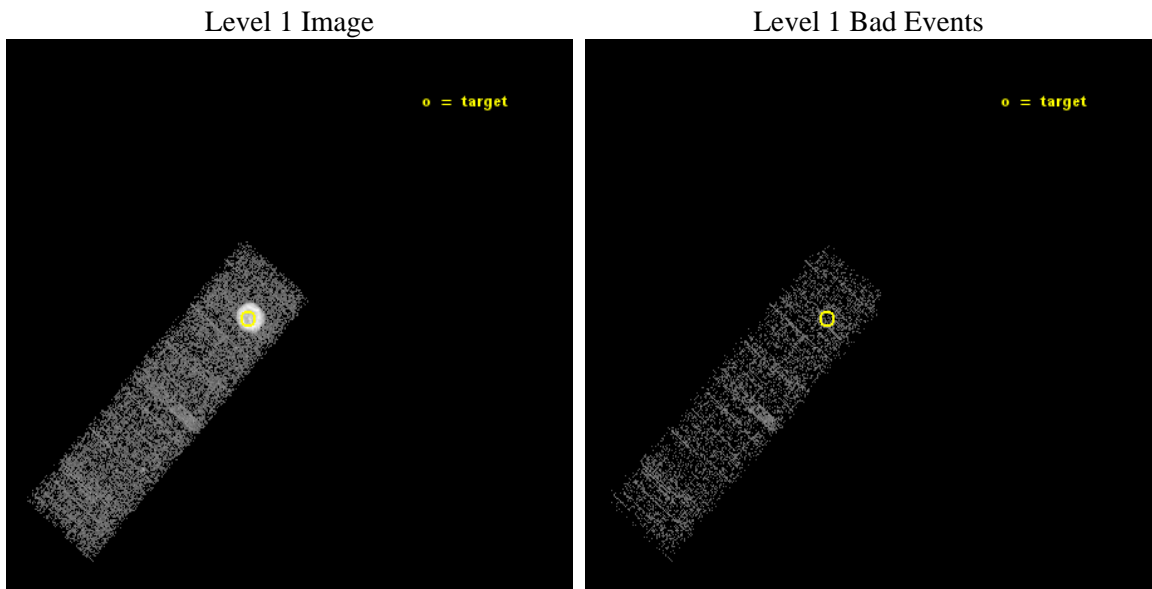
seq_num	590538	Sequence number
obs_id	17379	Observation id
title	AO-16 Calibration Observations of E0102-72	Proposal title
observer	Dr. CXC Calibration	Principal investigator
object	E0102-72 I3,-120,-0.5,0.5,0	Source name
dtycycle	0	&#160
cycle	P	events from which exps? Prim/Second/Both
ra_targ	16.01	Observer's specified target RA [deg]
dec_targ	-72.032028	Observer's specified target Dec [deg]
ra_nom	15.953374785101	Nominal RA [deg]
dec_nom	-72.034090934919	Nominal Dec [deg]
roll_nom	221.73794783411	Nominal Roll [deg]
revision	1	Processing version of data
ontime	18519.998896122	Sum of GTIs [s]
livetime	17616.283550007	Livetime [s]
ontime3	18519.998896122	Sum of GTIs [s]
l2events	39697	Number of level 2 events



## 2 OBI

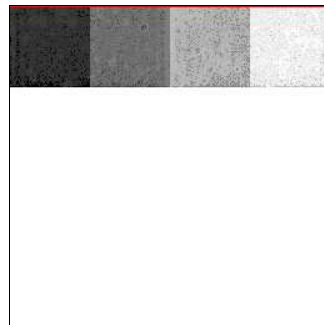
### 2.1 OBI

#### 2.1.1 Images



#### 2.1.2 Bias

Chip 3



### 2.1.3 Parameters

obi_num	0	Obi number	sched_exp_time	18457.988000	[s] Scheduled observation exposure time
ascdsver	10.3.3	Processing system revision	ontime	18519.998896122	Sum of GTIs [s]
caldbver	4.6.7	&#160	ontime3	18519.998896122	Sum of GTIs [s]
date	2015-02-26T04:10:28	Date and time of file creation	l1events	62637	Number of level 1 events
revision	1	Processing version of data			

### 2.1.4 Events

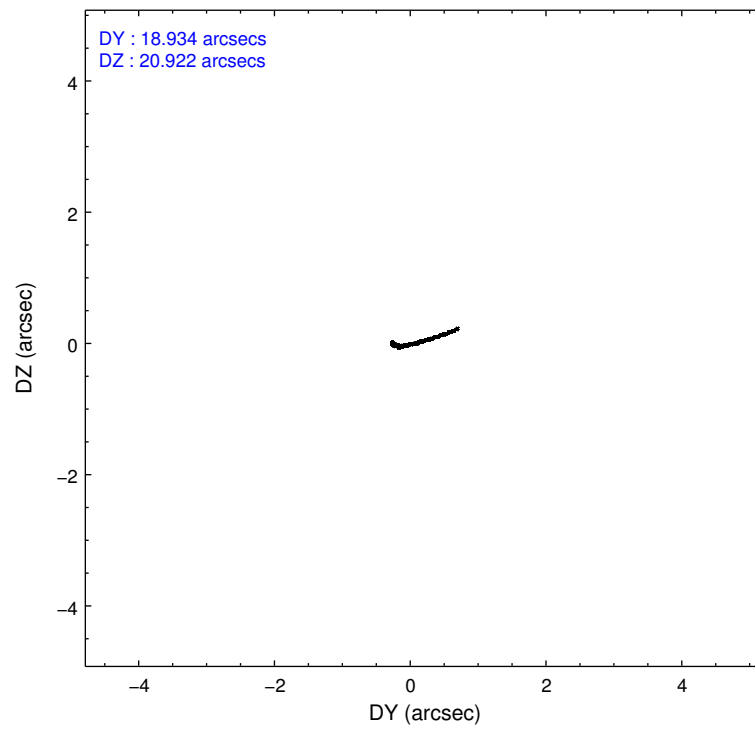
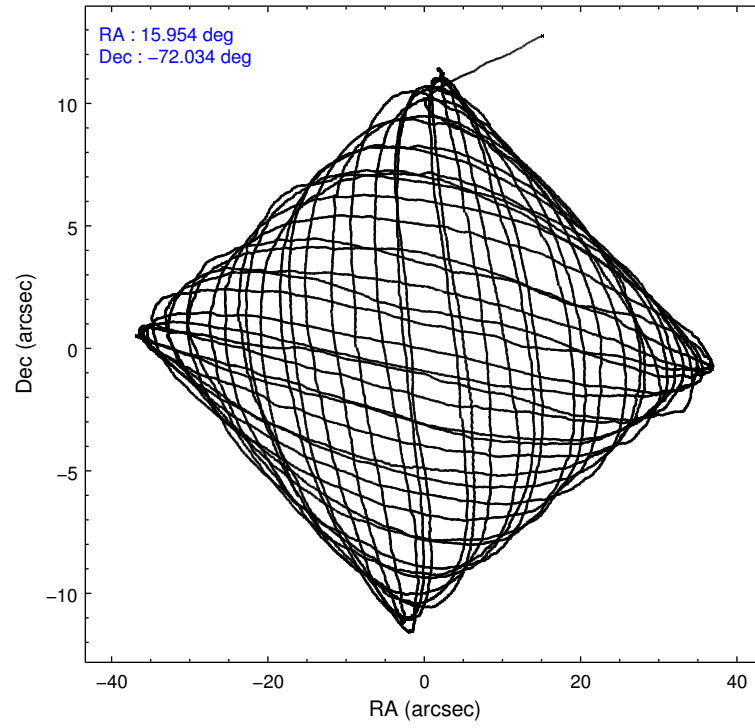
	<b>ccd 3</b>
level 1 events	62637
rejected events	22499
rejected %	<b>35%</b>

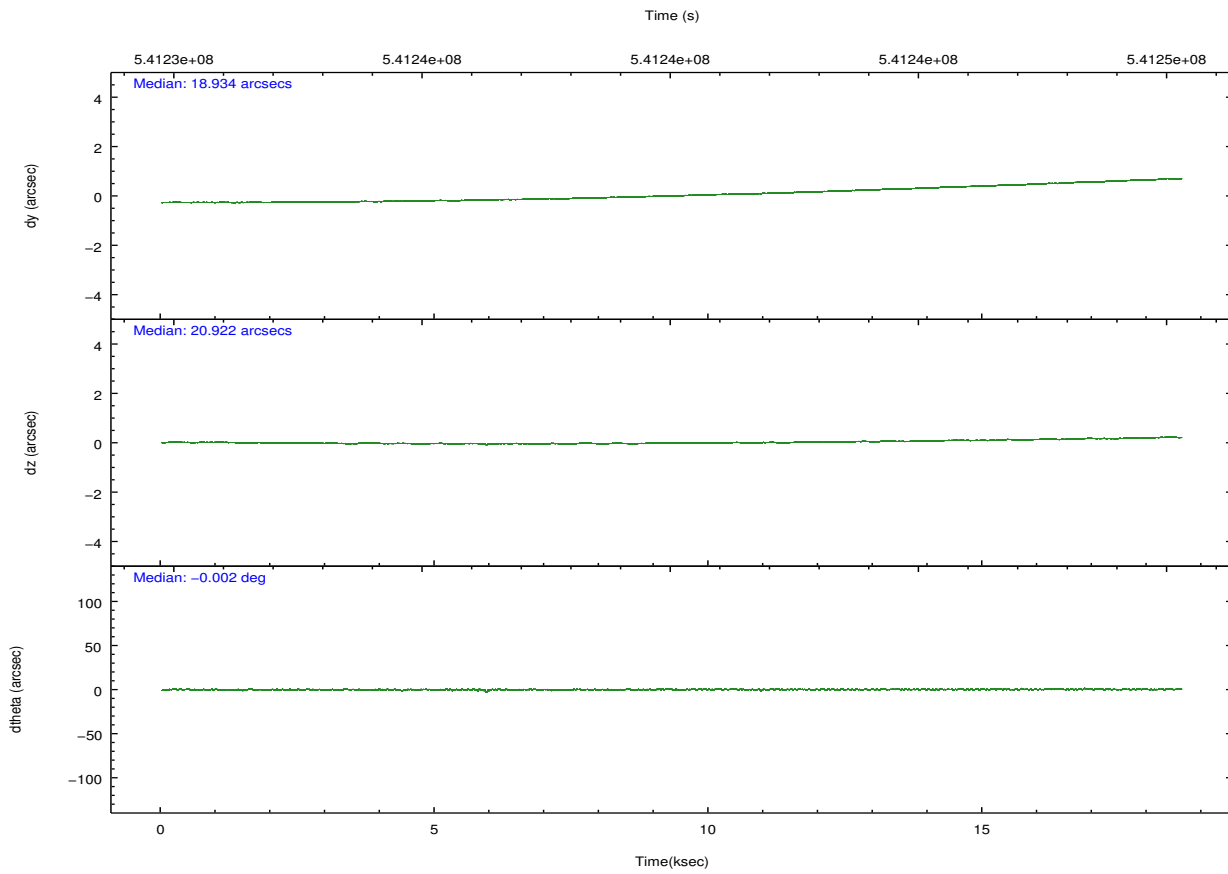
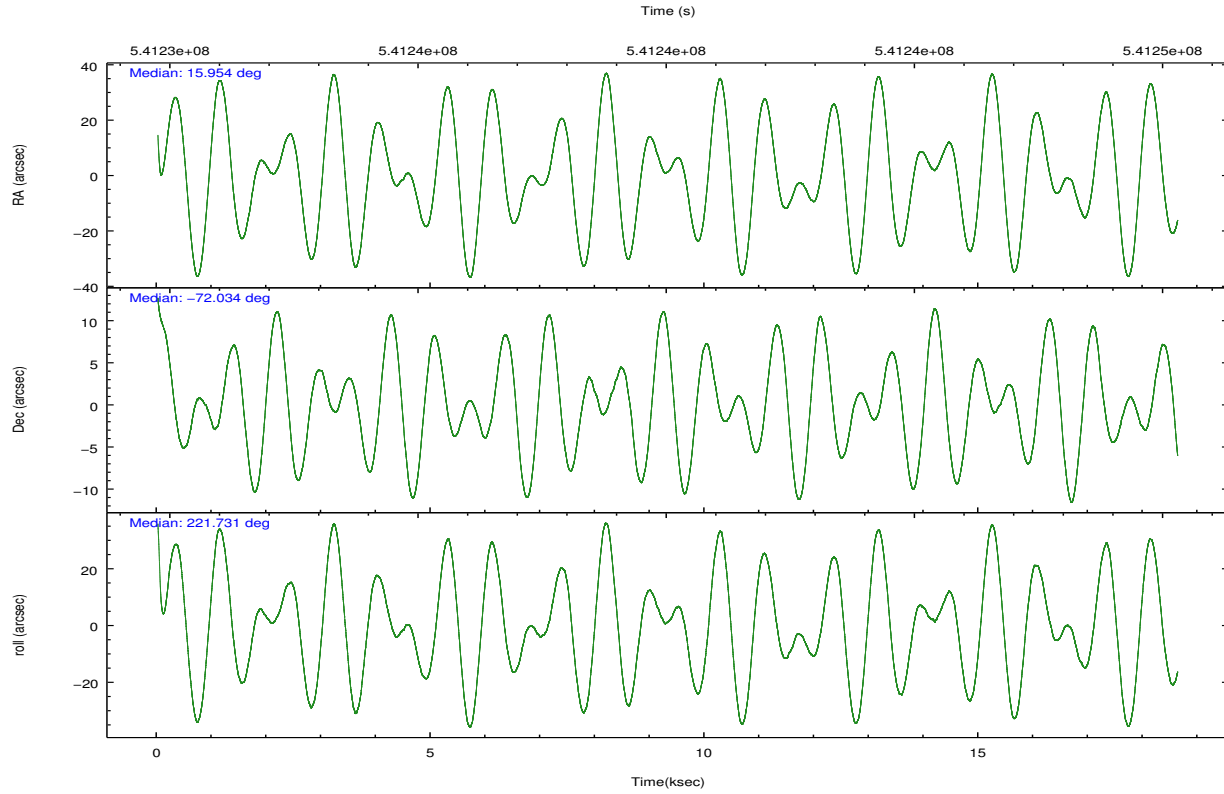
	<b>ccd 3</b>
grade 0 events	34515
	55%
grade 1 events	69
	0%
grade 2 events	2984
	4%
grade 3 events	1020
	1%
grade 4 events	1013
	1%
grade 5 events	1153
	1%
grade 6 events	609
	0%
grade 7 events	21274
	33%

## 2.2 Compared Parameters

Parameter	Planned	Actual	Parameter	Planned	Actual
Instrument	ACIS	ACIS	Obspar format version number	7	7
Detector	ACIS-3	ACIS-3	Obspar file type	PREDICTED	ACTUAL
Grating	NONE	NONE	Obspar update status	NONE	UPDATED
Data mode	VFAINT	VFAINT	Number of optional ACIS chips dropped	0	0
Observation mode	POINTING	POINTING	On-chip summing requested	N	N
[deg] Pointing RA	15.981013	15.95337478510117	Subarray requested	CUSTOM	1/4
[deg] Pointing Dec	-72.007881	-72.03409093491948	Subarray start row	768	768
[deg] Pointing Roll	221.555539	221.7379478341068	Subarray row count	256	256
[s] Window start time (MET)	539136067.184000	539136067.184000	Alternating exposures requested	N	N
[s] Window stop time (MET)	544147267.184000	544147267.184000	[s] Primary exposure time	0.000000	0.8
[mm] SIM focus pos	-0.782348	-0.7809083437167272			
[mm] SIM defocus	0	0.001439871863259334			
[mm] SIM translation stage pos	-233.592463	-233.5874344608287			
[mm] SIM translation stage offset	0	-0.005018542100998502			
[s] Observation start time (MET)	541230912.184000	541229157.01846			
Observation start date	2015-02-25T05:54:05	2015-02-25T05:25:57			
[s] Observation end time (MET)	541249370.184000	541249607.3071001			
Observation end date	2015-02-25T11:01:43	2015-02-25T11:06:47			
Read mode	TIMED	TIMED			

## 2.3 Aspect





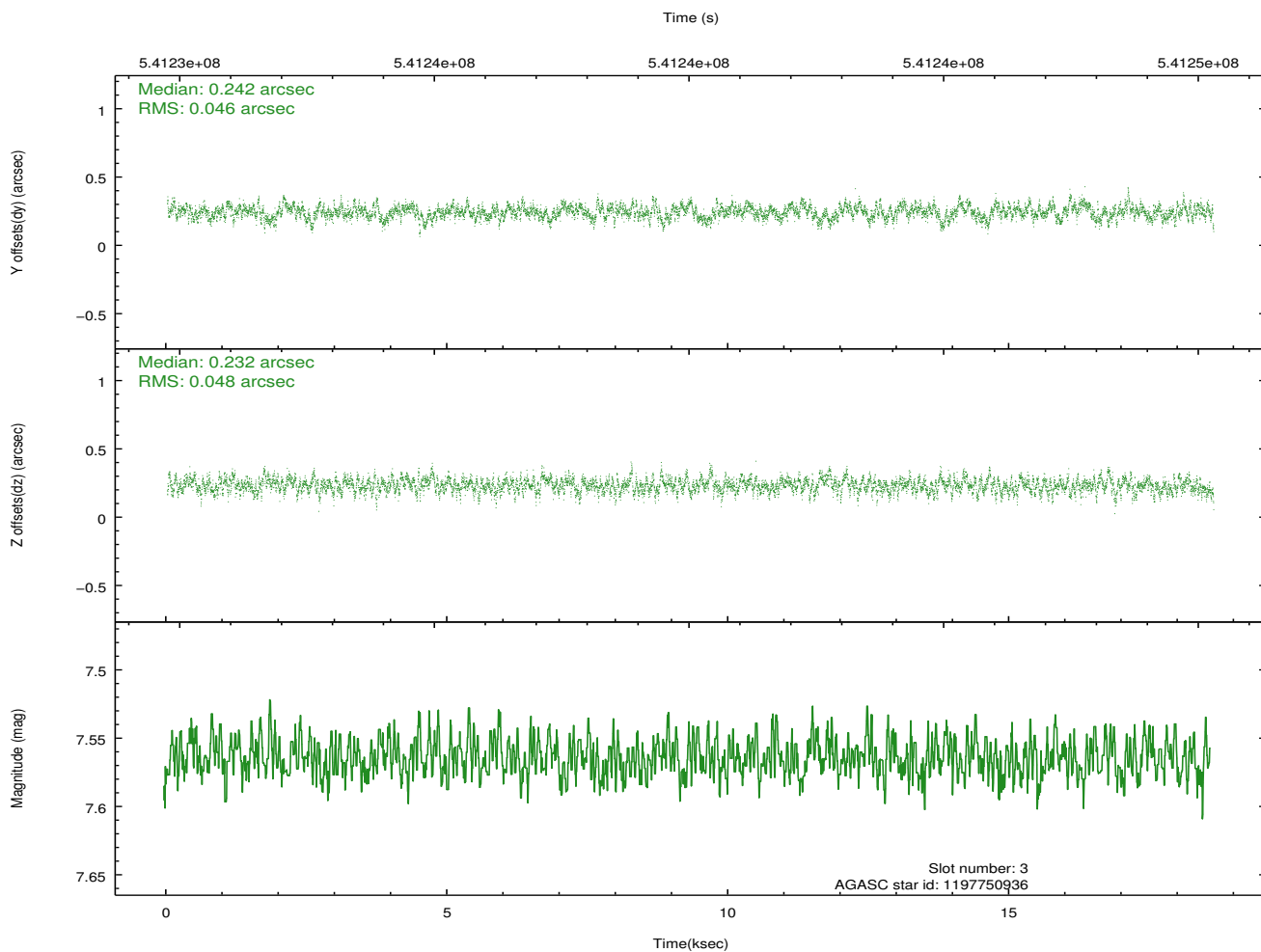
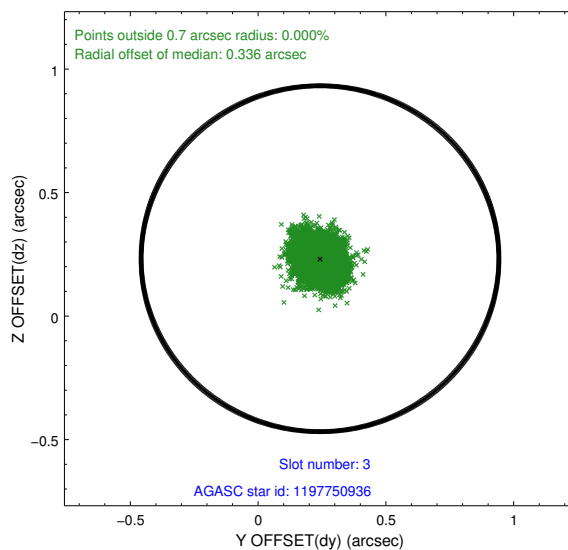
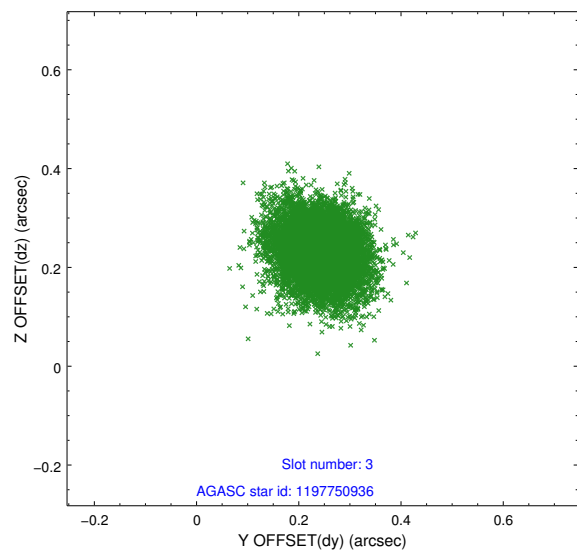
### Slot Statistics

slot	status	used	id	mag	n_pts	med_dy	med_dz	dr1	dr2	ra	dec	mean_y	mean_z
0	FID		ACIS-I-1	7.09	4541	0.076	-0.042	0.008	0.014	0.000000	0.000000	920.42	-844.74
1	FID		ACIS-I-5	7.08	4542	-0.297	0.053	0.006	0.011	0.000000	0.000000	-1827.96	1052.71
2	FID		ACIS-I-6	7.08	4542	0.130	0.059	0.007	0.011	0.000000	0.000000	385.76	1697.48
3	GUIDE	used	1197750936	7.56	9081	0.242	0.232	0.070	0.116	15.387940	-71.549550	-585.40	-1679.63
4	GUIDE	used	1197884536	8.49	9080	-0.054	-0.072	0.082	0.134	17.160729	-71.835289	-1393.88	422.60
5	GUIDE	used	1197884712	8.28	9082	-0.085	-0.142	0.086	0.137	16.087398	-72.252690	497.56	737.16
6	GUIDE	used	1197885328	7.24	9084	0.244	0.296	0.094	0.153	16.283090	-71.733943	-909.41	-510.40
7	GUIDE	used	1198189696	7.35	9083	-0.347	-0.309	0.077	0.120	15.223750	-72.697522	2256.90	1324.16

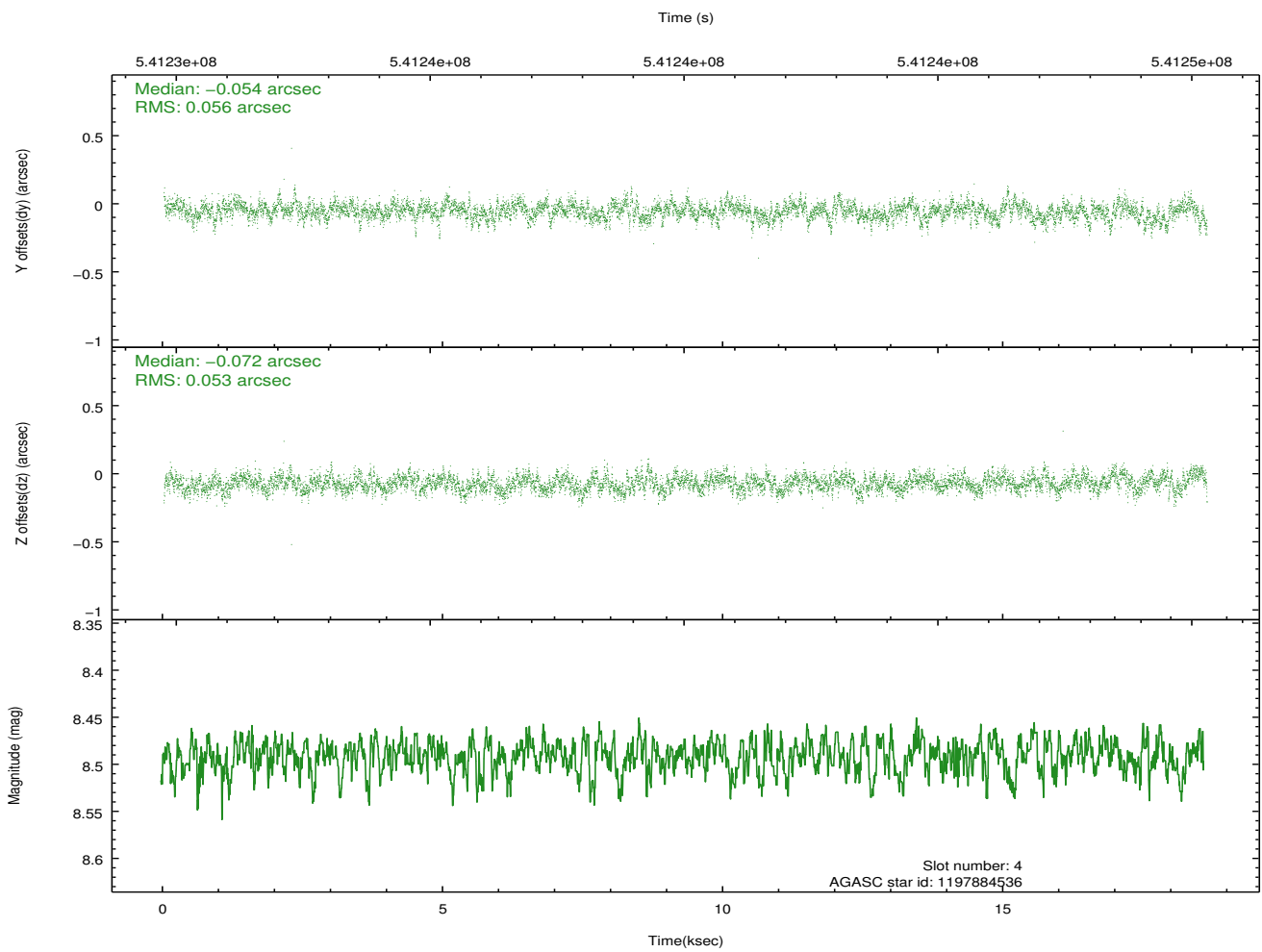
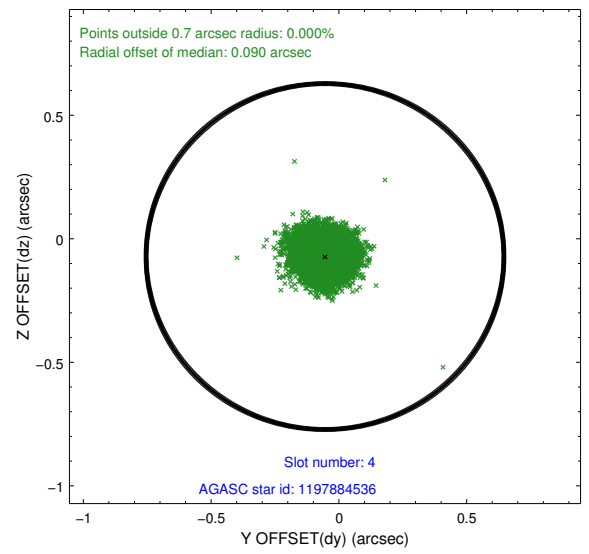
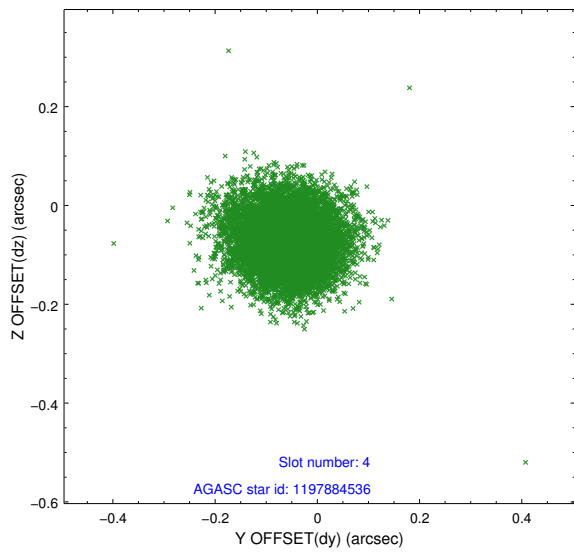
∞

## 2.4 Star Slots

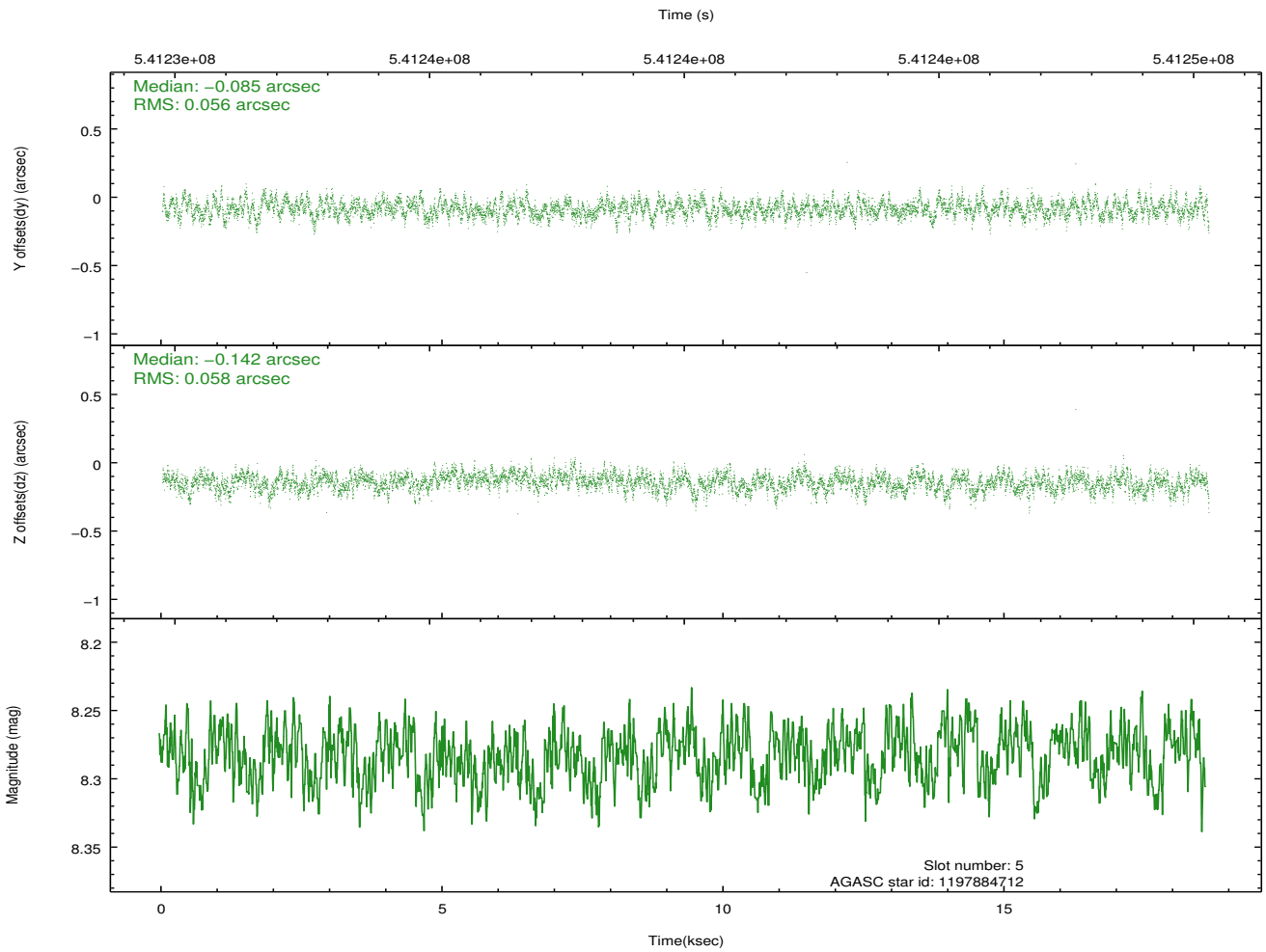
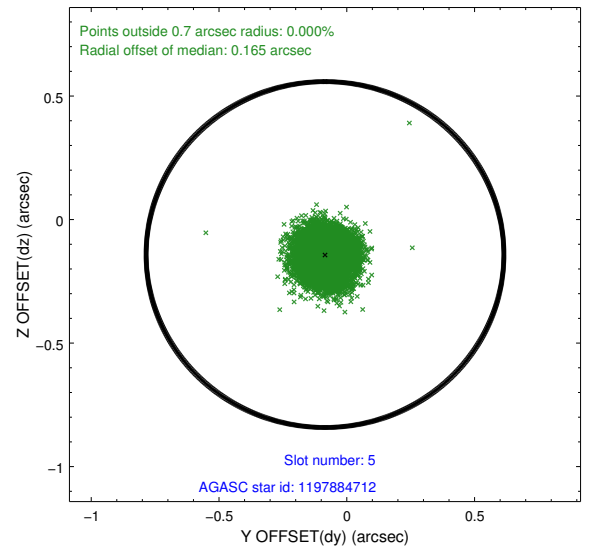
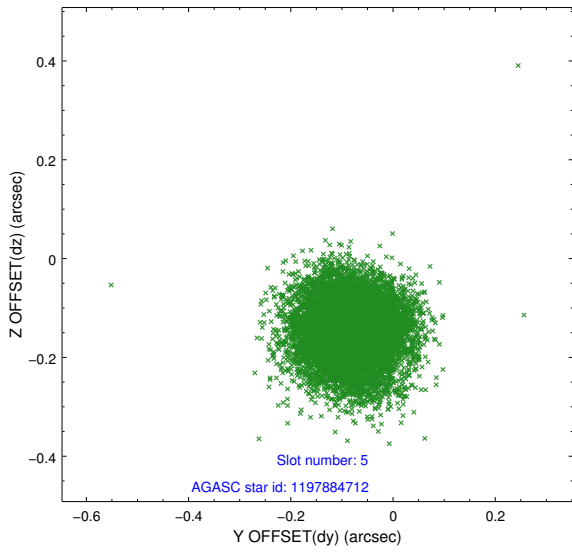
### 2.4.1 Slot 3



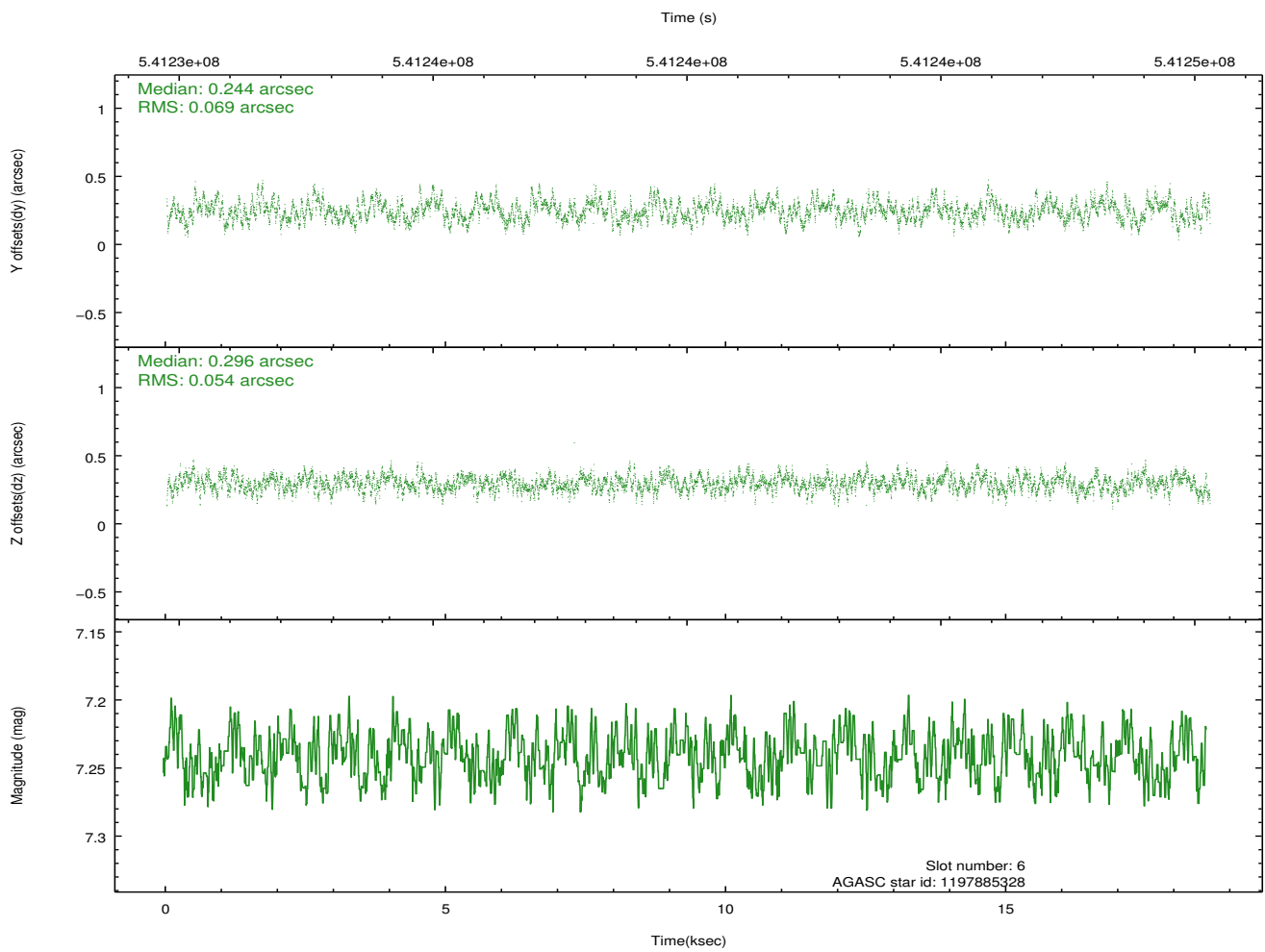
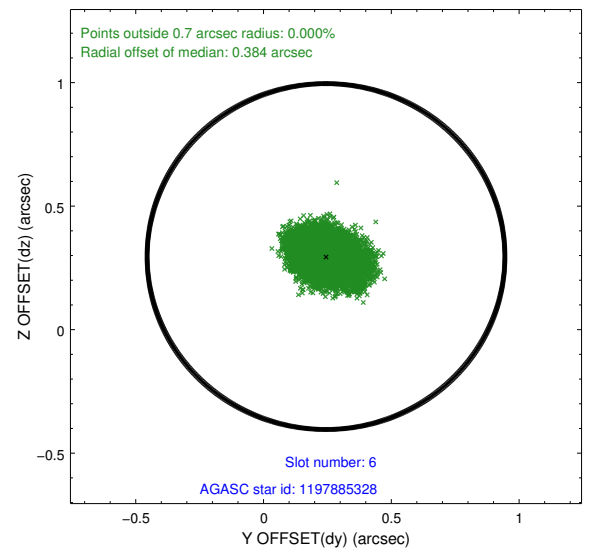
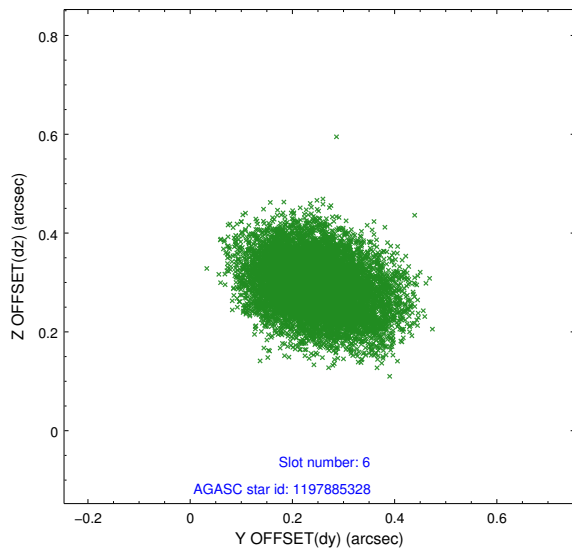
## 2.4.2 Slot 4



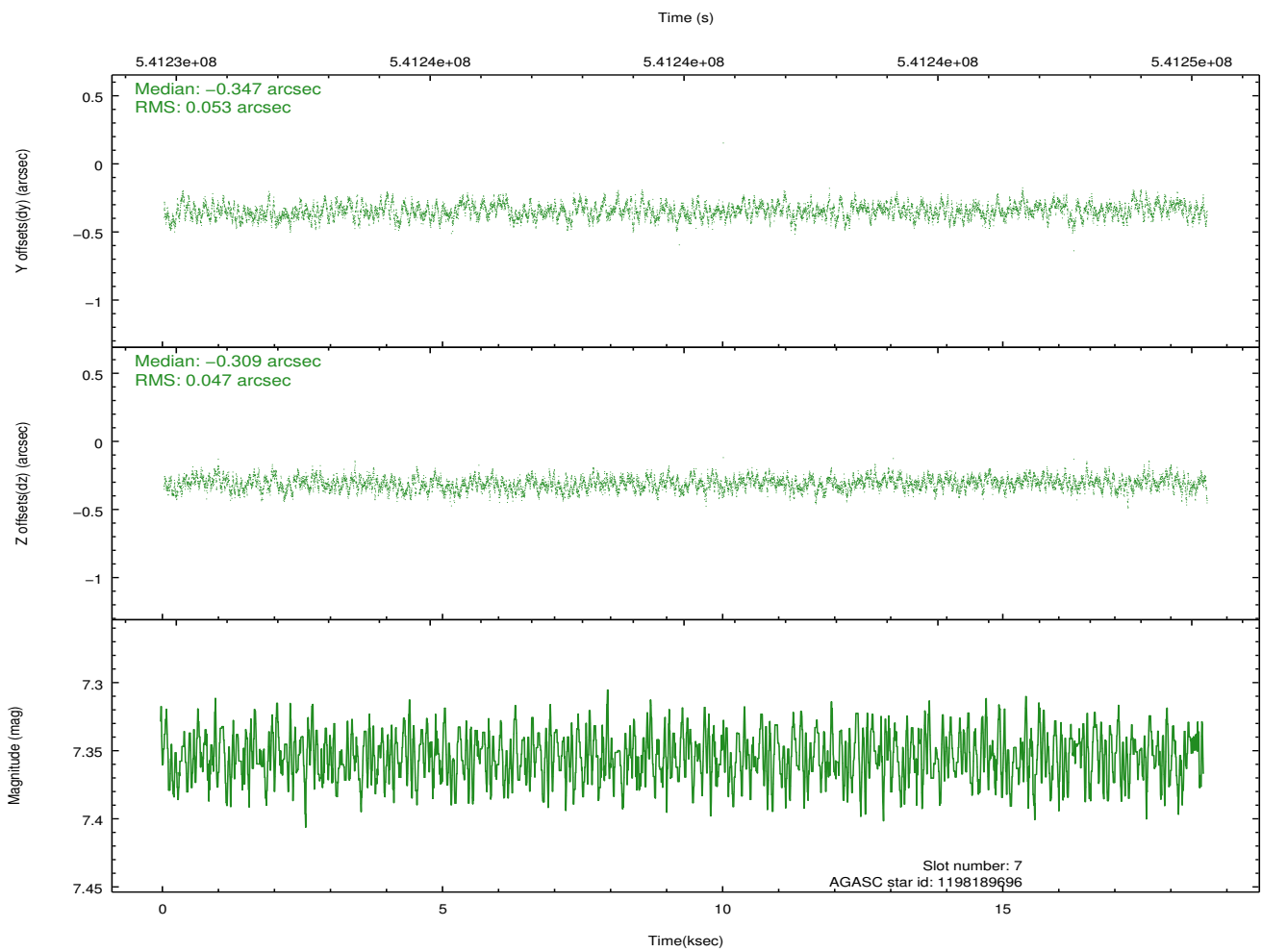
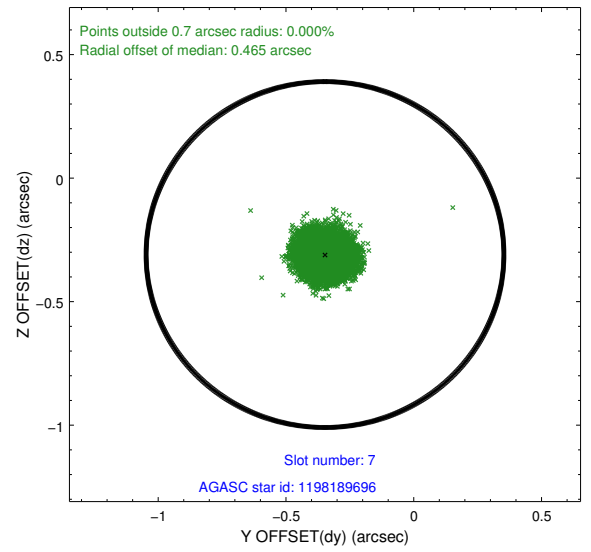
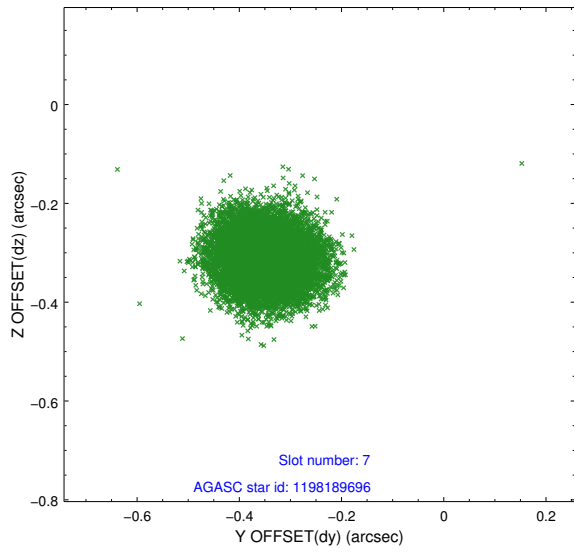
### 2.4.3 Slot 5



## 2.4.4 Slot 6

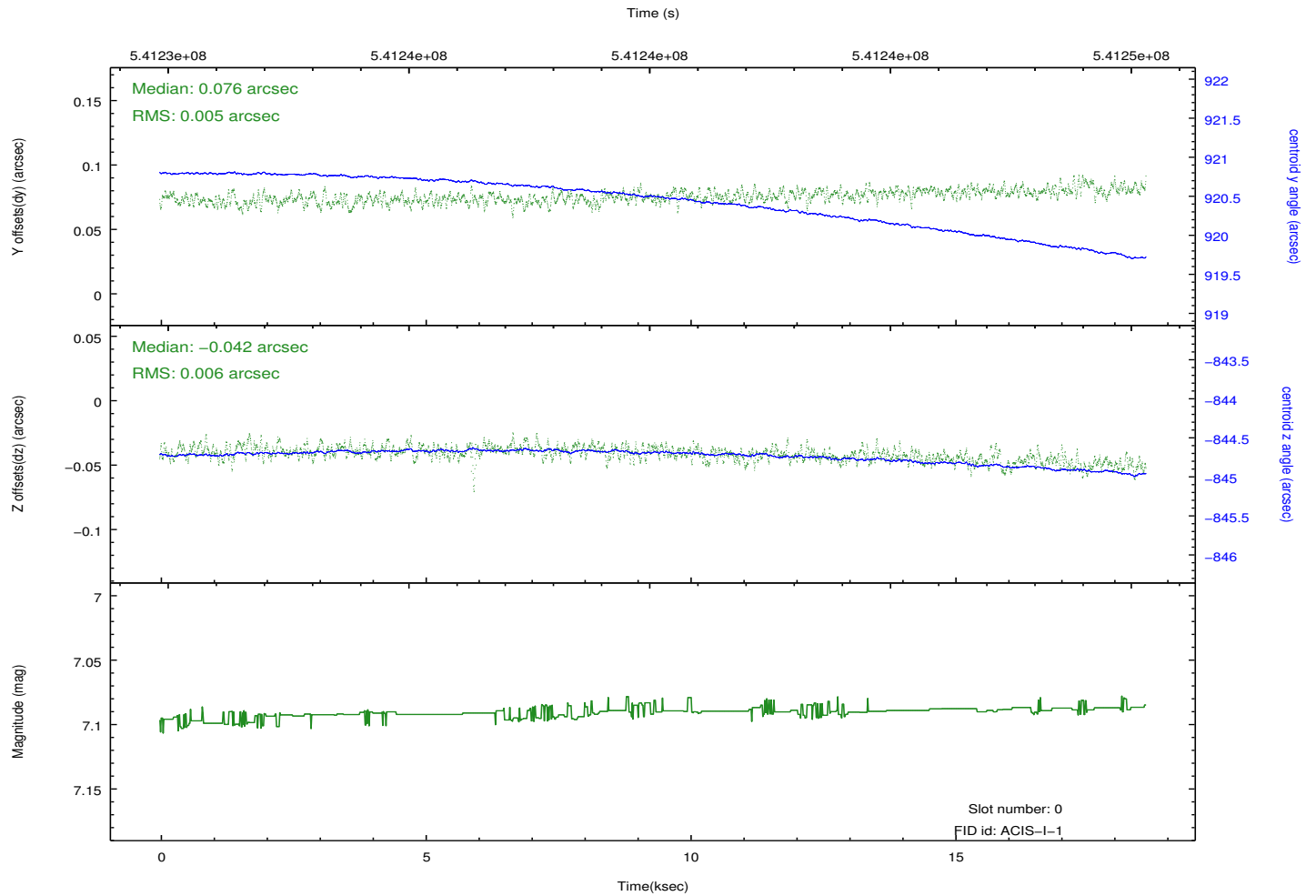
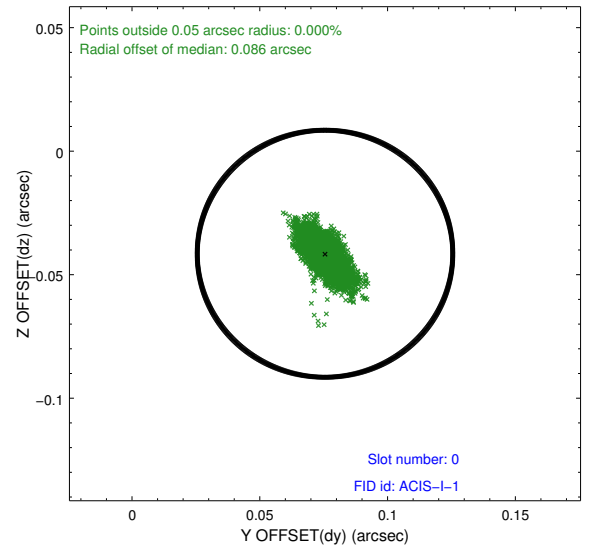
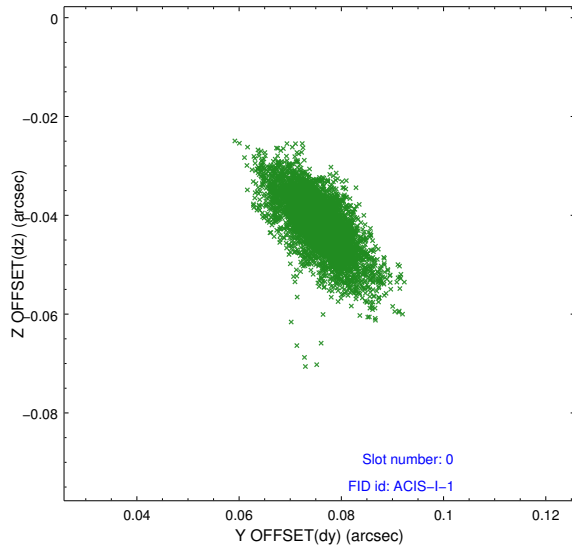


## 2.4.5 Slot 7

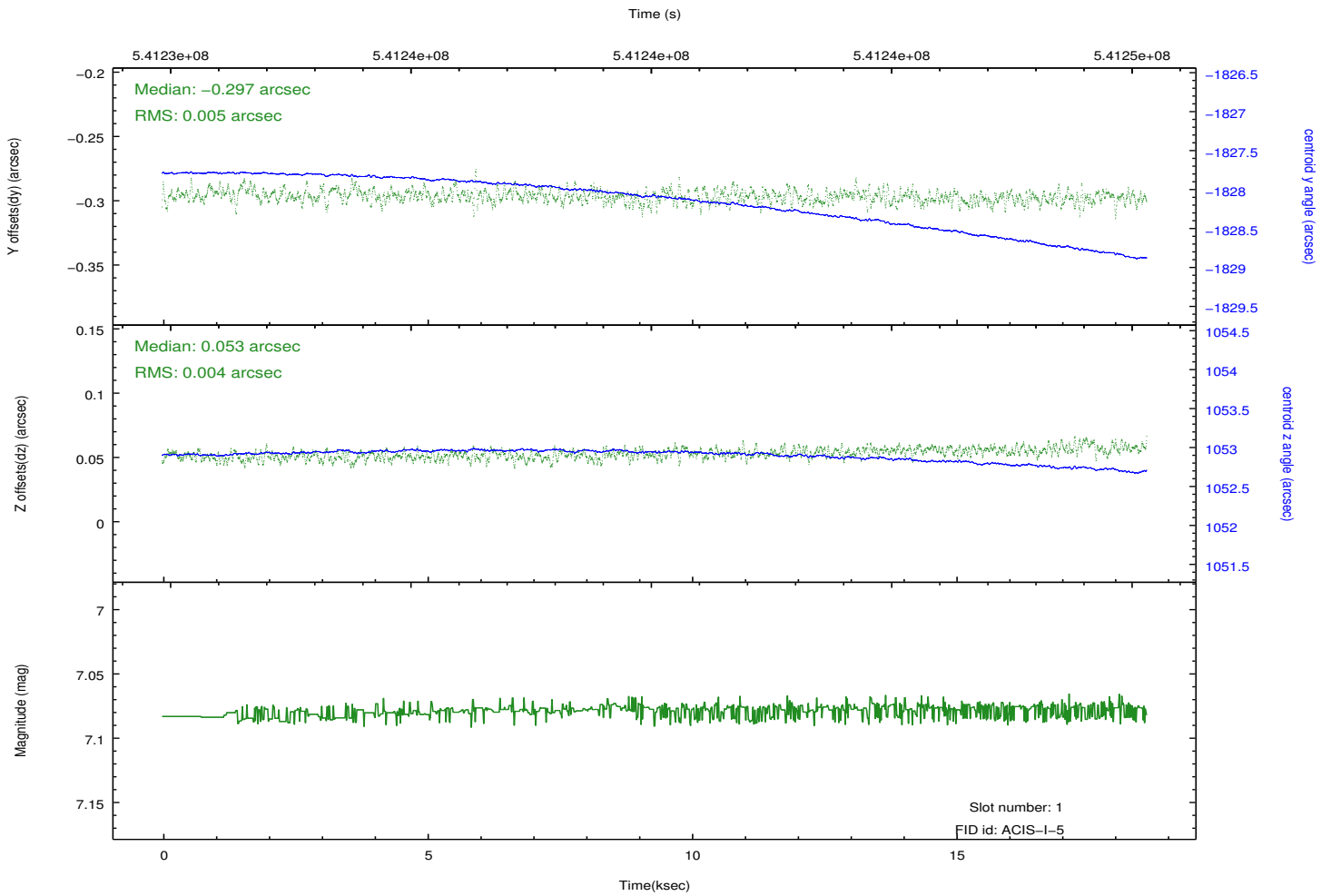
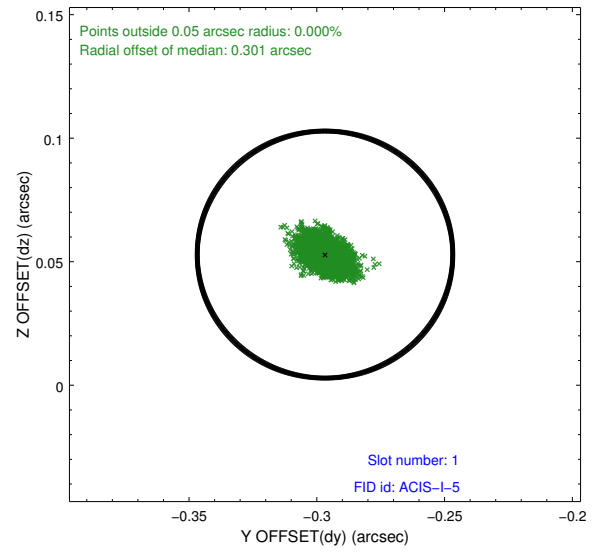
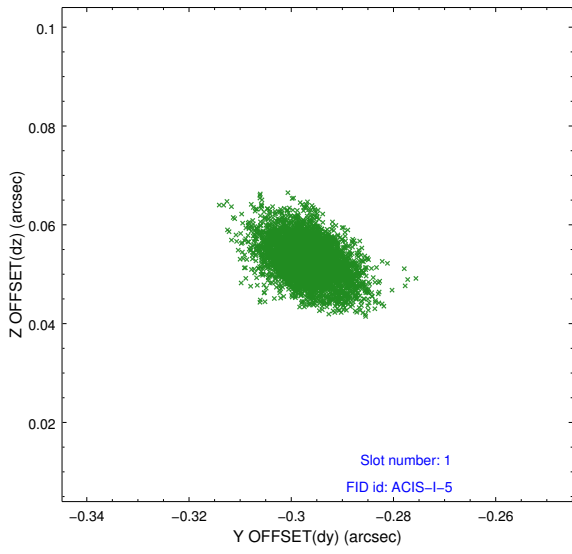


## 2.5 FID Slots

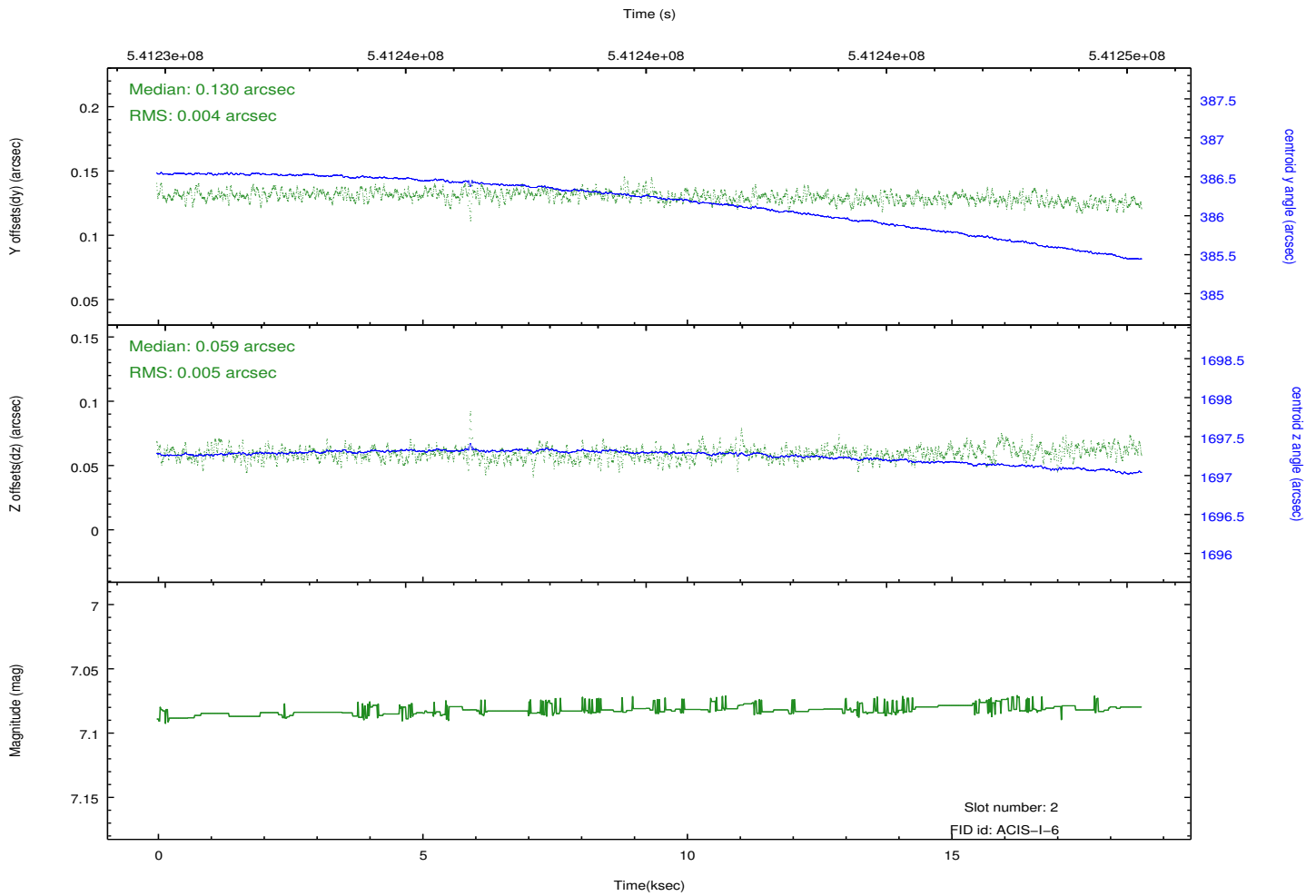
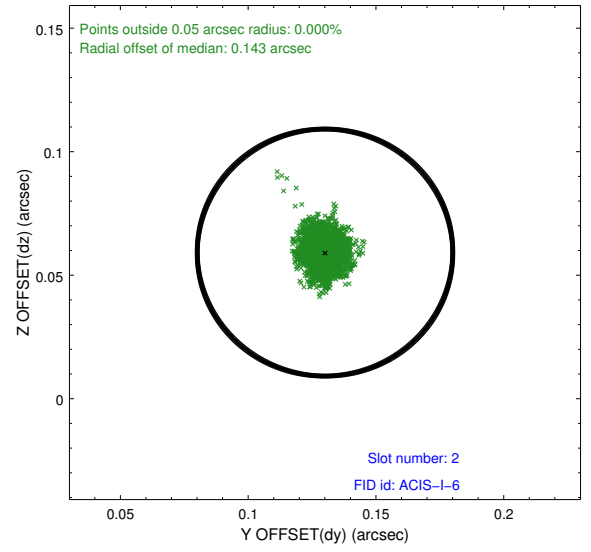
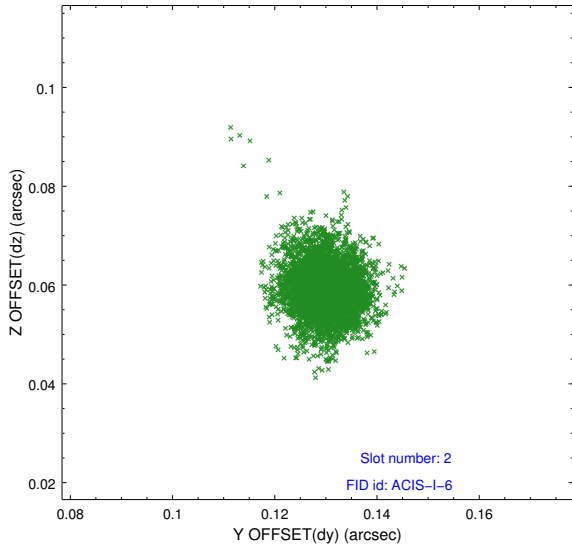
### 2.5.1 Slot 0



## 2.5.2 Slot 1



### 2.5.3 Slot 2



## A Summary

### A.1 Status

V&V Scientist	Joy Nichols
V&V Date (YYYY-MM-DD)	2015.02.26
V&V Edition	1
V&V Disposition and Status	OK
V&V Charge Time	18.519998896122

### A.2 Comments