

# V&V Reference Report

## L2 ASCDS Version : 8.4.5

Observation 1829 - L2 Version 6  
Chandra X-Ray Center

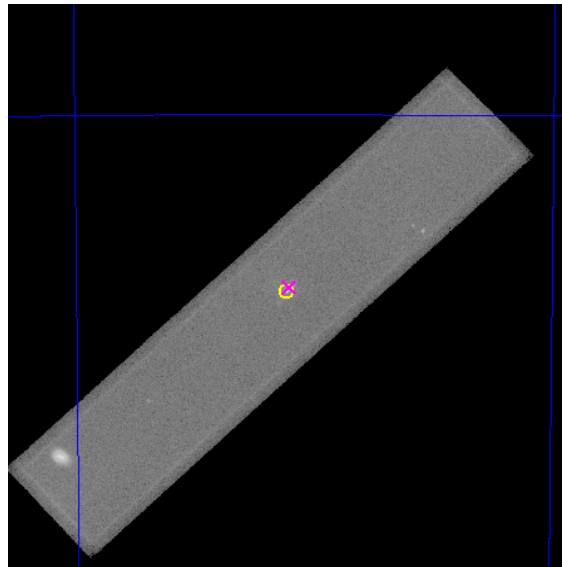
L2 Processing Date : Jun 28 2013

## Contents

<b>1</b>	<b>Front</b>	<b>2</b>
<b>2</b>	<b>OBI</b>	<b>3</b>
2.1	OBI . . . . .	3
2.1.1	Images . . . . .	3
2.1.2	Parameters . . . . .	4
2.1.3	Events . . . . .	4
2.2	Compared Parameters . . . . .	5
2.3	Aspect . . . . .	6
2.4	Star Slots . . . . .	9
2.4.1	Slot 3 . . . . .	9
2.4.2	Slot 4 . . . . .	10
2.4.3	Slot 5 . . . . .	11
2.4.4	Slot 6 . . . . .	12
2.4.5	Slot 7 . . . . .	13
2.5	FID Slots . . . . .	14
2.5.1	Slot 0 . . . . .	14
2.5.2	Slot 1 . . . . .	15
2.5.3	Slot 2 . . . . .	16
<b>A</b>	<b>Summary</b>	<b>17</b>
A.1	Status . . . . .	17
A.2	Comments . . . . .	17

# 1 Front

seq_num	500119	Sequence number
obs_id	1829	Observation id
title	SNR 0538-69.1: THE SNR WITH THE FASTEST KNOWN PULSAR	Proposal titl
observer	Prof. Q. Daniel Wang	Principal investigator
object	SNR 0538-69.1	Source name
ra_targ	84.448333	Observer's specified target RA [deg]
dec_targ	-69.172222	Observer's specified target Dec [deg]
ra_nom	84.438653610983	Nominal RA [deg]
dec_nom	-69.168624682327	Nominal Dec [deg]
roll_nom	136.57403469216	Nominal Roll [deg]
revision	6	Processing version of data
ontime	29819.301108018	[s]
livetime	29736.723833117	Ontime multiplied by DTCOR
l2events	772367	Number of level 2 events

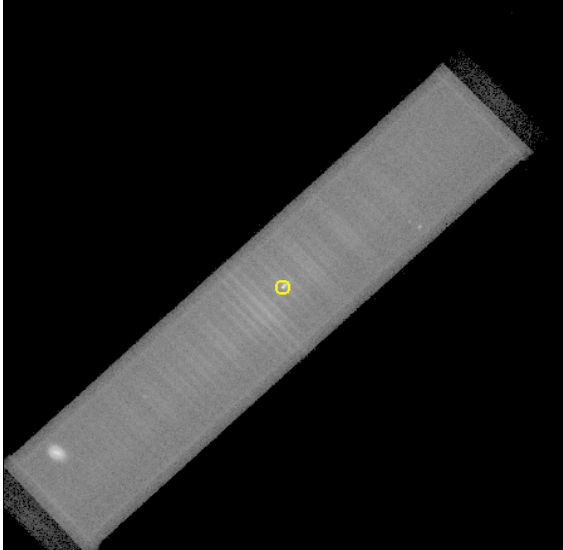


## 2 OBI

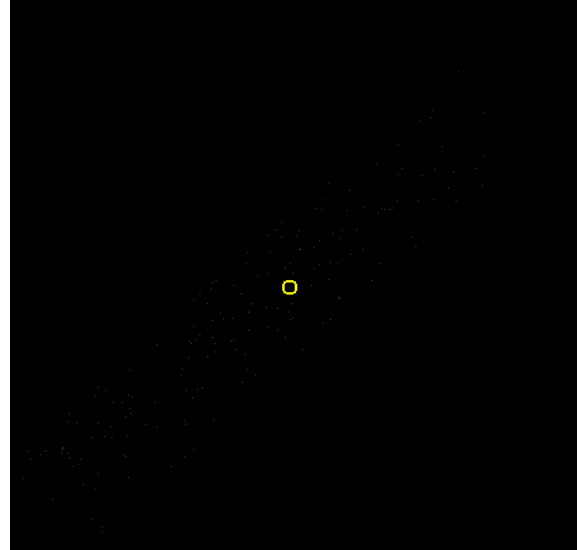
### 2.1 OBI

#### 2.1.1 Images

Level 1 Image



Level 1 Bad Events



### 2.1.2 Parameters

obi_num	0	Obi number	sched_exp_time	30000.000000	[s] Scheduled observation exposure time
ascdsver	10	Processing system revision	ontime	29819.301109016	[s]
caldsver	4.5.7	&#160	l1events	1209222	Number of level 1 events
date	2013-06-28T23:16:27	Date and time of file creation			
revision	6	Processing version of data			

### 2.1.3 Events

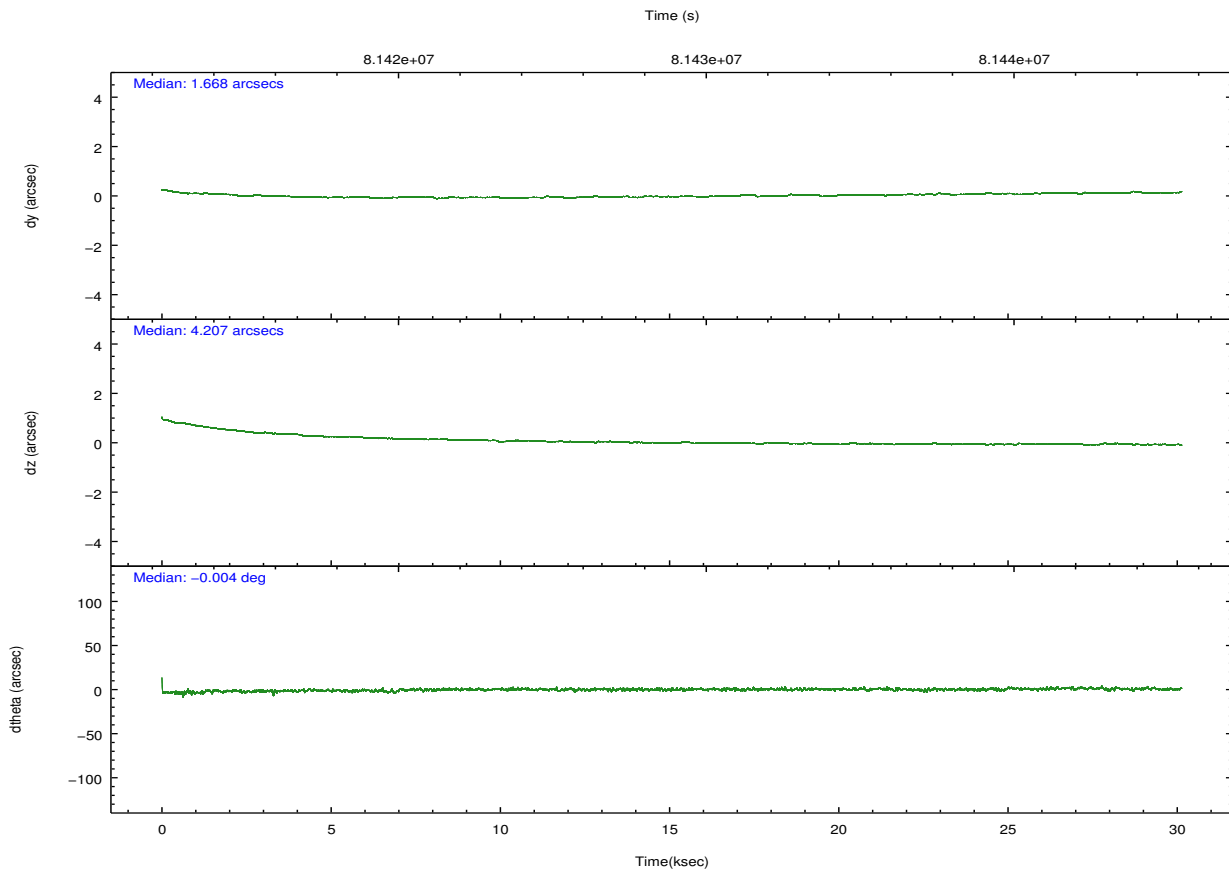
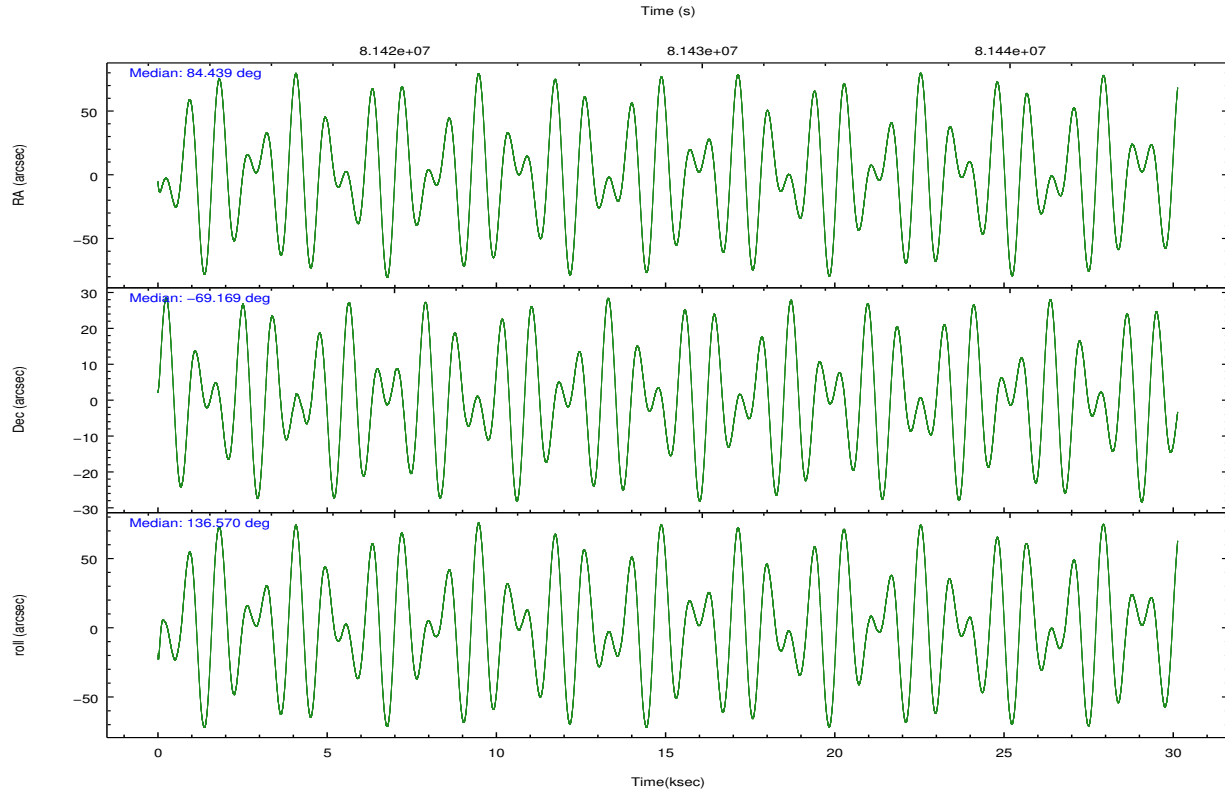
Level 1 Events

	<b>segment 1</b>	<b>segment 2</b>	<b>segment 3</b>
level 1 events	1743	1207469	10
rejected events	10	3938	6
rejected %	0%	0%	60%

## 2.2 Compared Parameters

Parameter	Planned	Actual	Parameter	Planned	Actual
Instrument	HRC	HRC	Obspar format version number	7	7
Detector	HRC-S	HRC-S	Obspar file type	PREDICTED	ACTUAL
Grating	NONE	NONE	Obspar update status	NONE	UPDATED
Data mode	OBSERVING	OBSERVING			
Observation mode	POINTING	POINTING			
[deg] Pointing RA	84.518117	84.43865361098284			
[deg] Pointing Dec	-69.174131	-69.16862468232704			
[deg] Pointing Roll	136.580982	136.5740346921619			
[mm] SIM focus pos	-1.429586	-1.428180813131781			
[mm] SIM defocus	0.1037507710433287	0.1051558262725154			
[mm] SIM translation stage pos	250.455976	250.466033080201			
[mm] SIM translation stage offset	0	-0.01005468664627074			
[s] Observation start time (MET)	81413947.184000	81412988.86159299			
Observation start date	2000-07-31T06:58:03	2000-07-31T06:43:08			
[s] Observation end time (MET)	81443947.184000	81444693.650272			
Observation end date	2000-07-31T15:18:03	2000-07-31T15:31:33			

## 2.3 Aspect



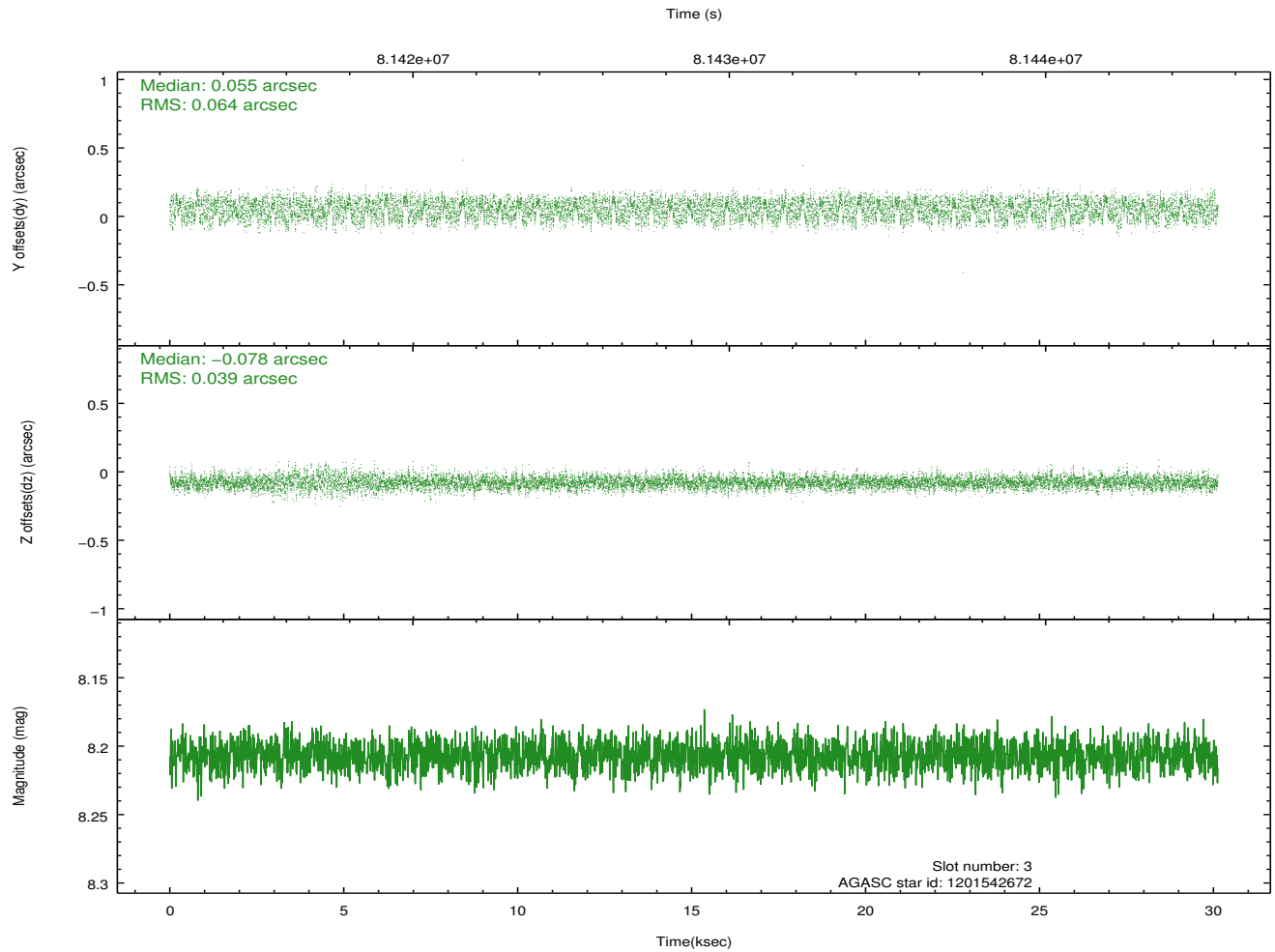
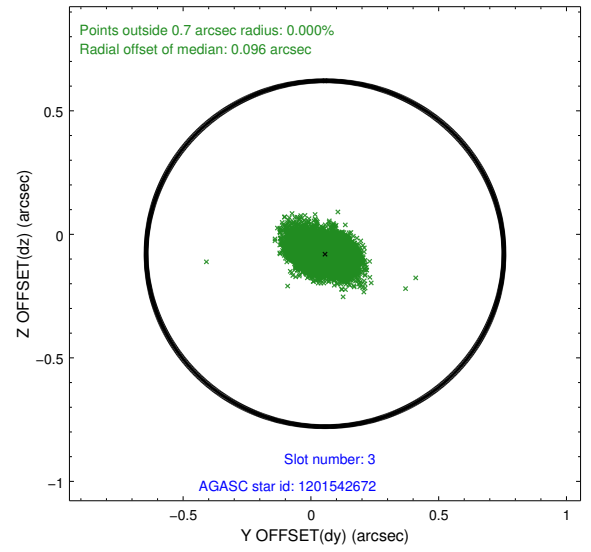
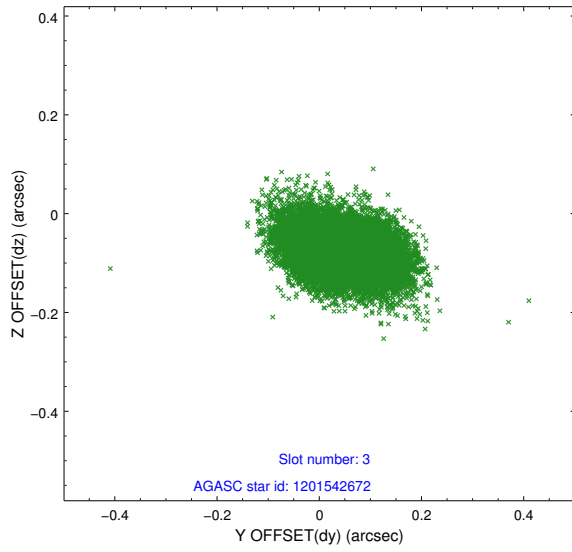
### Slot Statistics

slot	status	id	mag	n_pts	med_dy	med_dz	dr1	dr2	ra	dec	mean_y	mean_z
0	FID	HRC-S-1	7.00	7346	0.125	-0.127	0.010	0.026	0.000000	0.000000	-1155.70	-452.78
1	FID	HRC-S-3	7.02	7348	0.162	-0.071	0.013	0.024	0.000000	0.000000	-1158.55	576.75
2	FID	HRC-S-4	6.96	7347	0.101	-0.098	0.008	0.013	0.000000	0.000000	1242.37	579.43
3	GUIDE	1201542672	8.21	14696	0.055	-0.078	0.080	0.127	84.492488	-69.957531	-1915.27	2070.72
4	GUIDE	1201017288	9.74	14450	0.025	0.019	0.101	0.169	84.358094	-68.728983	1253.51	-1019.23
5	GUIDE	1201018312	9.60	14691	0.008	0.054	0.097	0.158	86.298231	-69.115627	-1536.59	-1698.26
6	GUIDE	1201019200	9.46	14691	-0.029	-0.021	0.082	0.138	84.213591	-68.777384	1269.56	-763.22
7	GUIDE	1200885760	9.47	14689	-0.056	0.025	0.082	0.136	83.723637	-68.777667	1728.78	-319.34

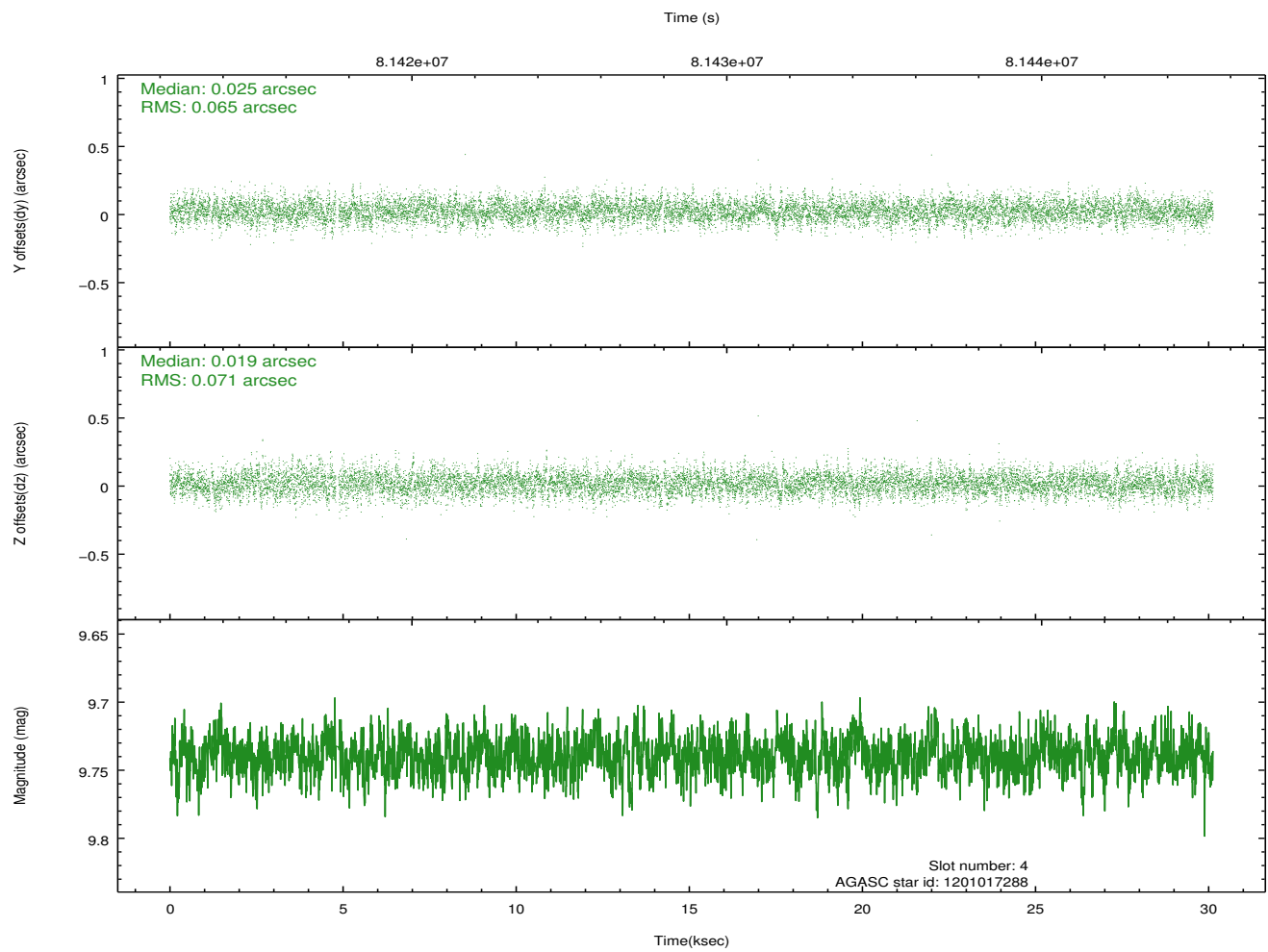
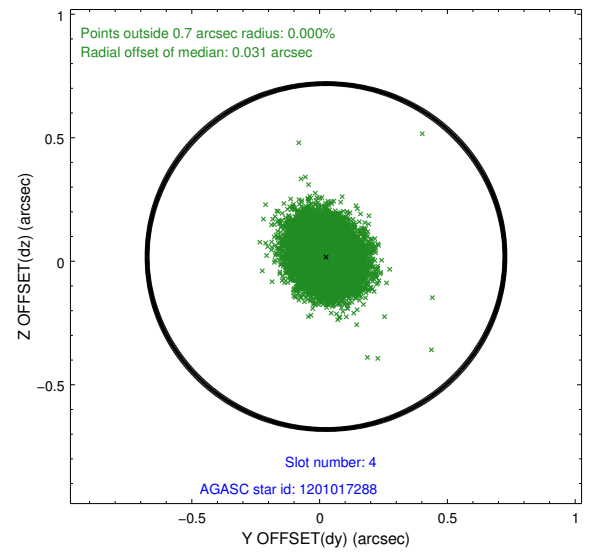
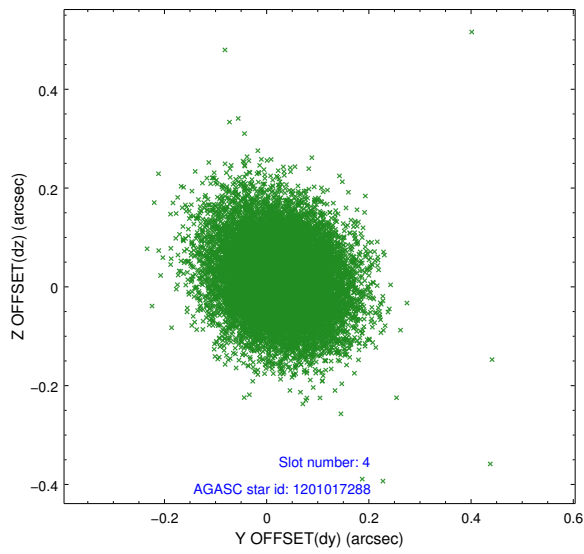
∞

## 2.4 Star Slots

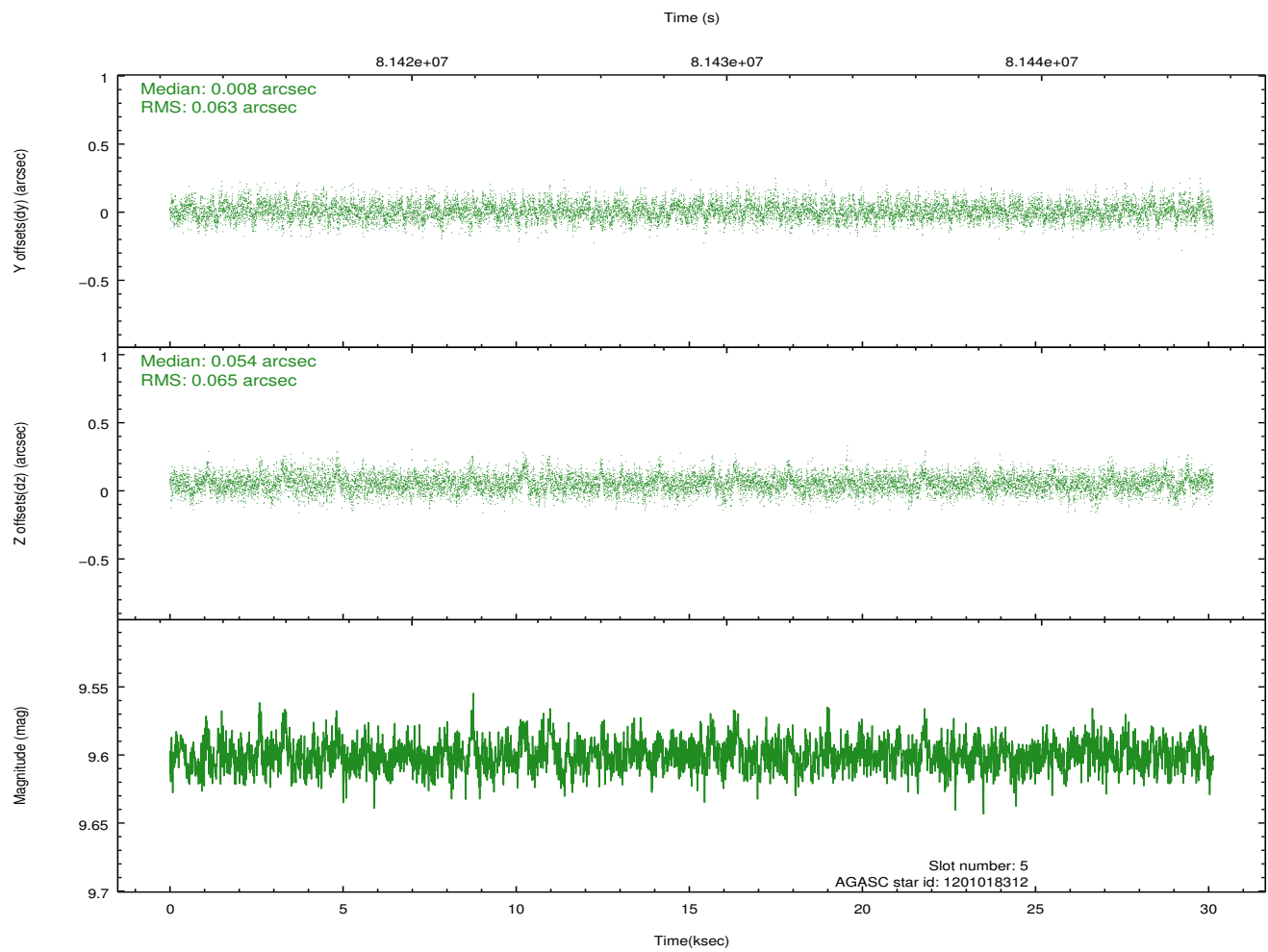
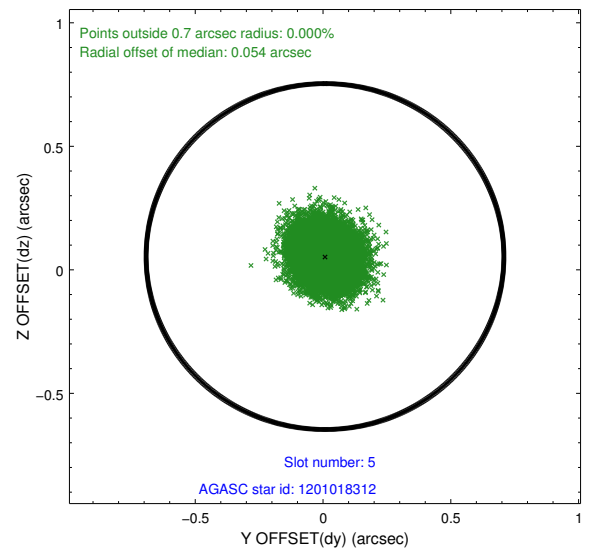
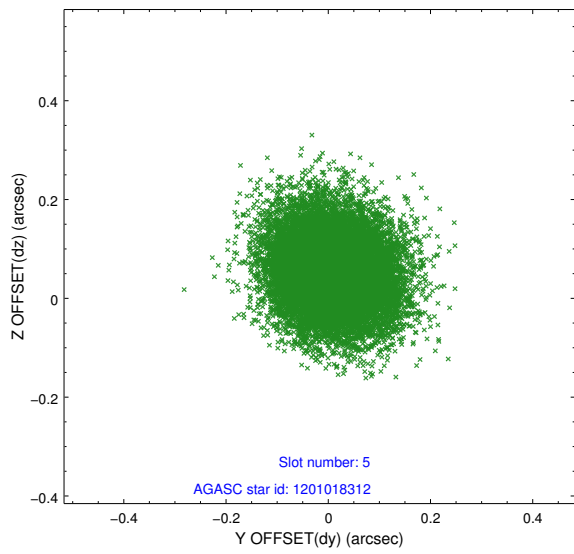
### 2.4.1 Slot 3



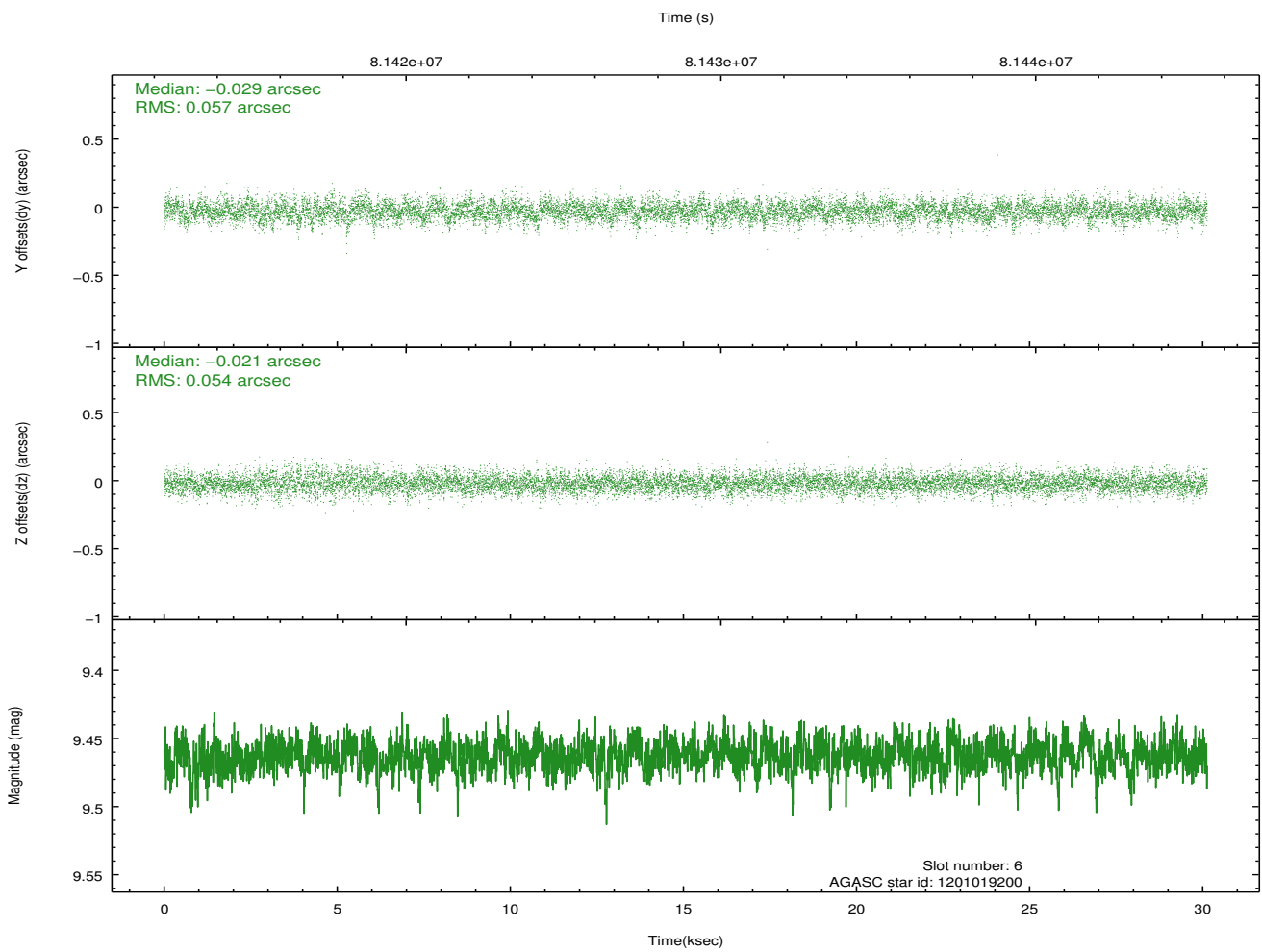
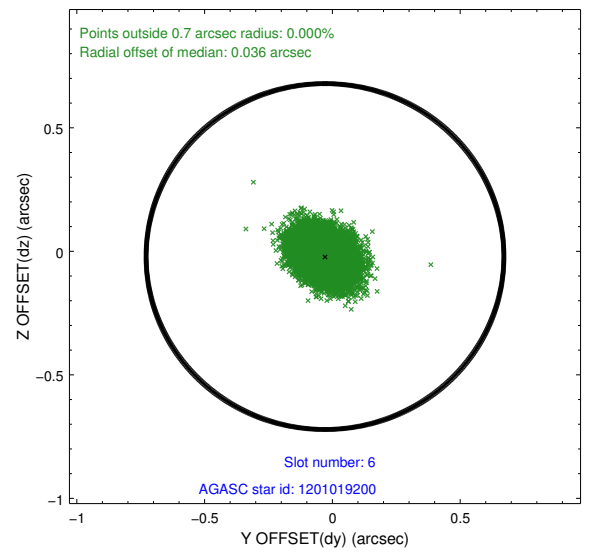
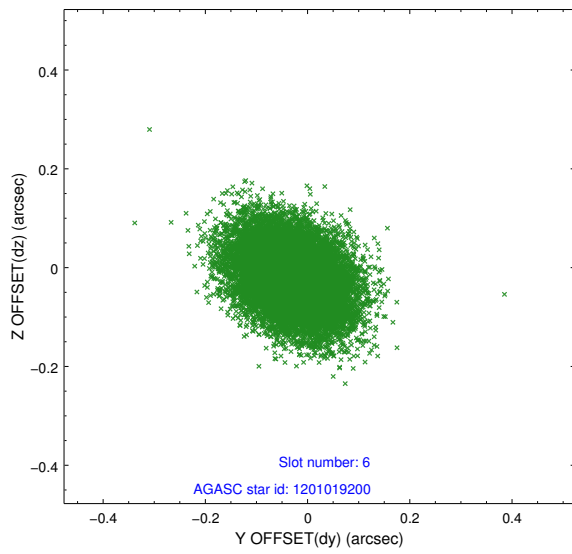
## 2.4.2 Slot 4



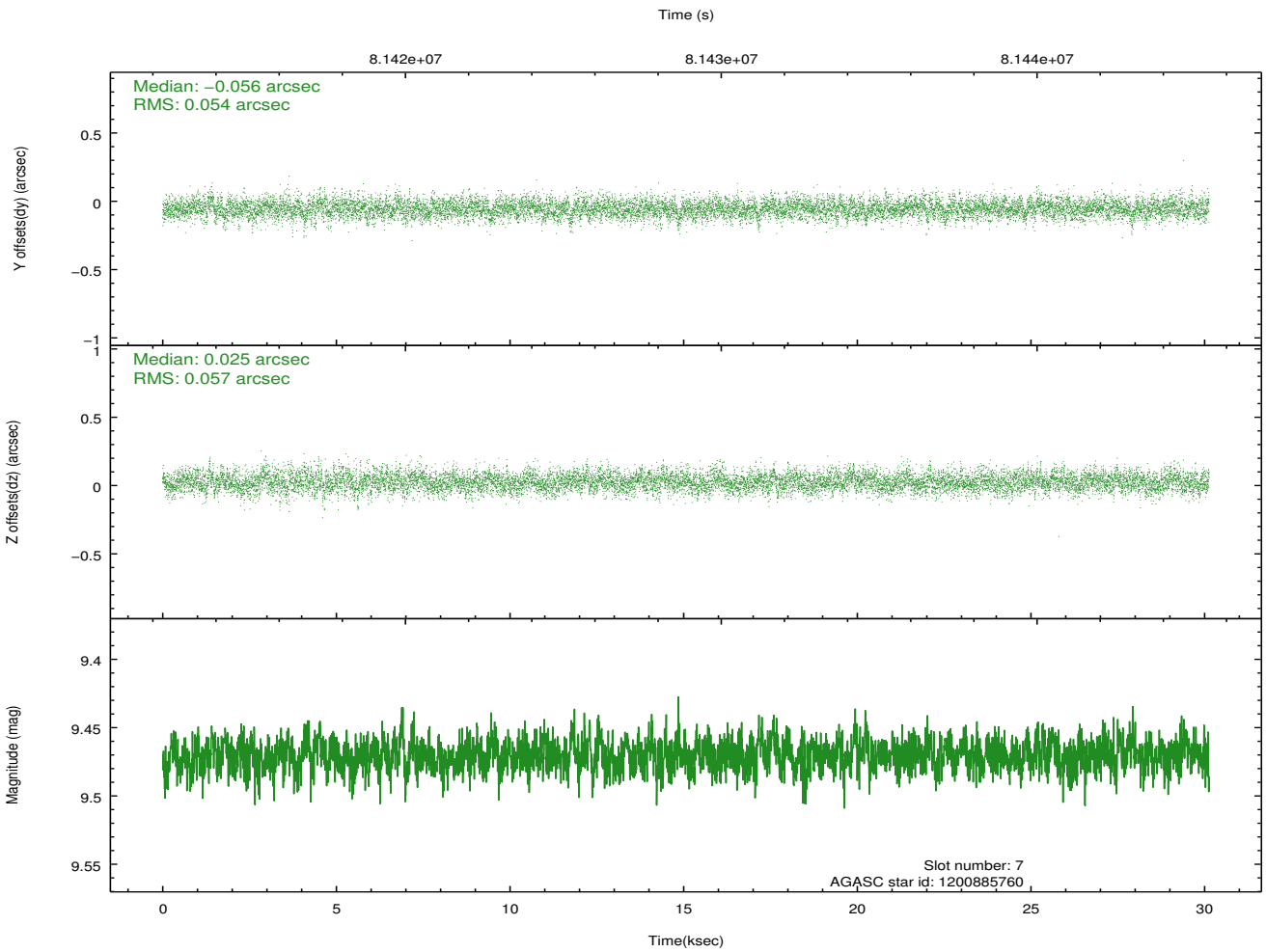
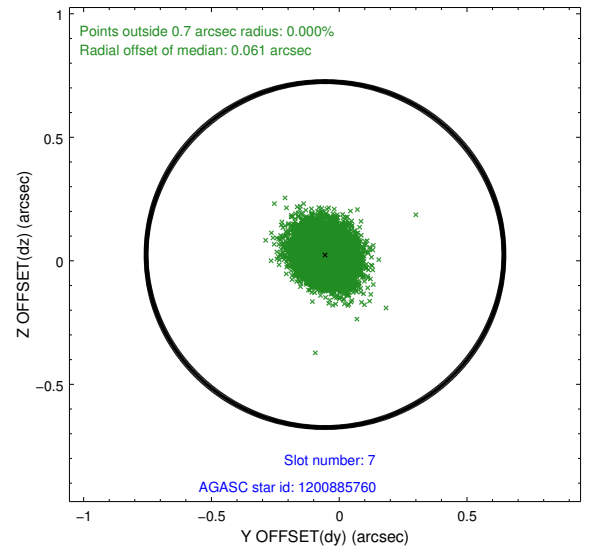
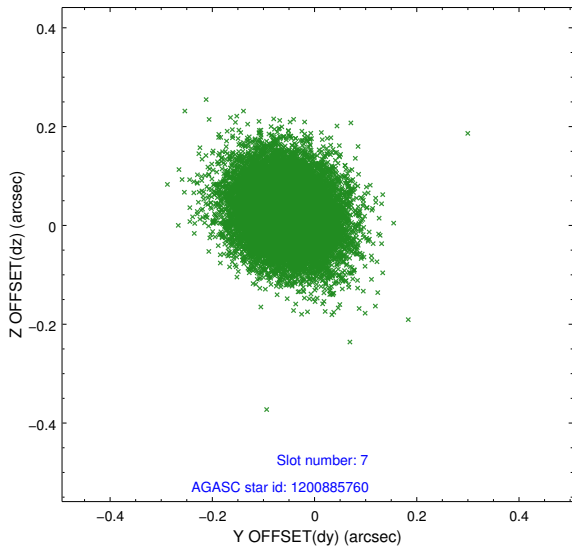
### 2.4.3 Slot 5



## 2.4.4 Slot 6

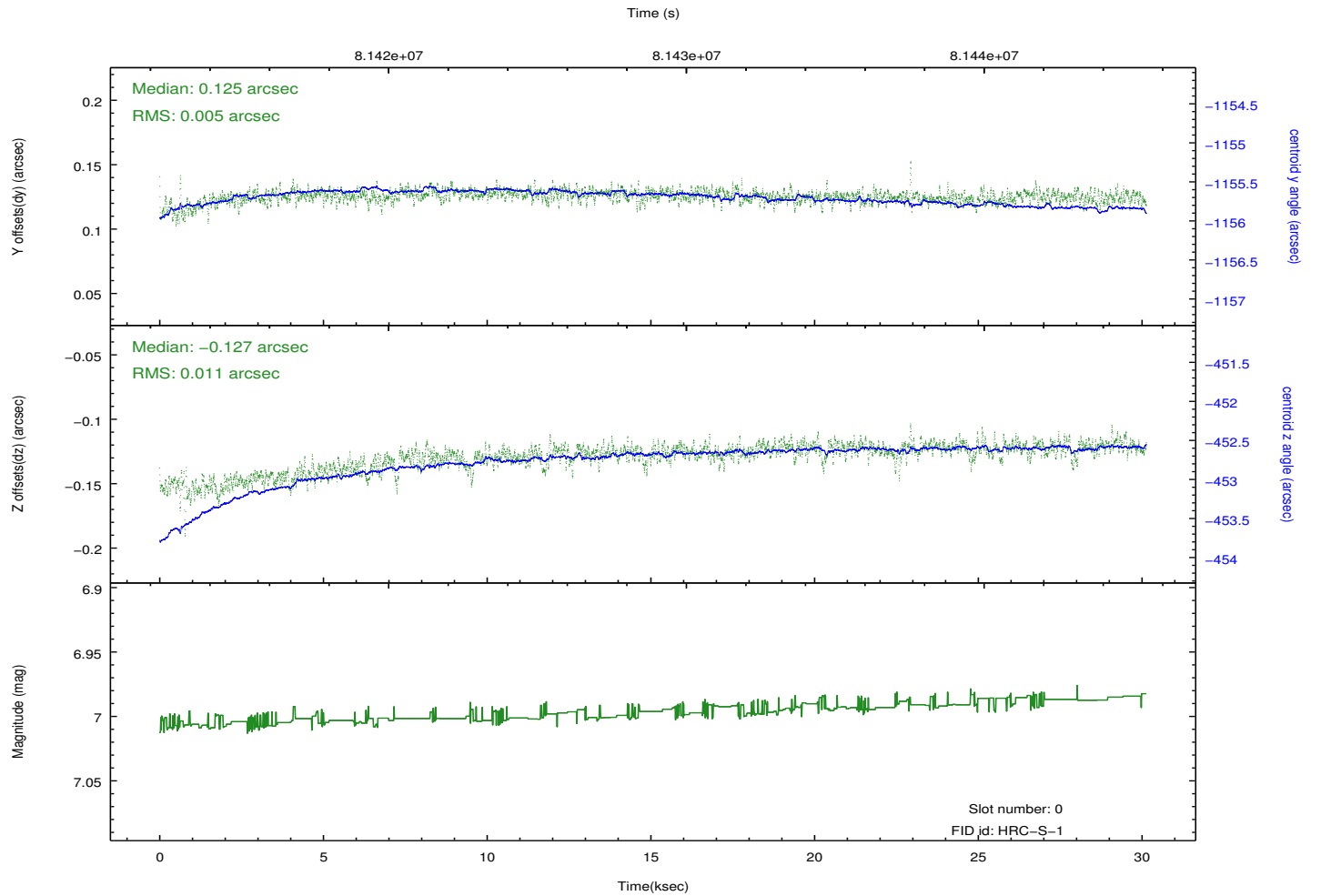
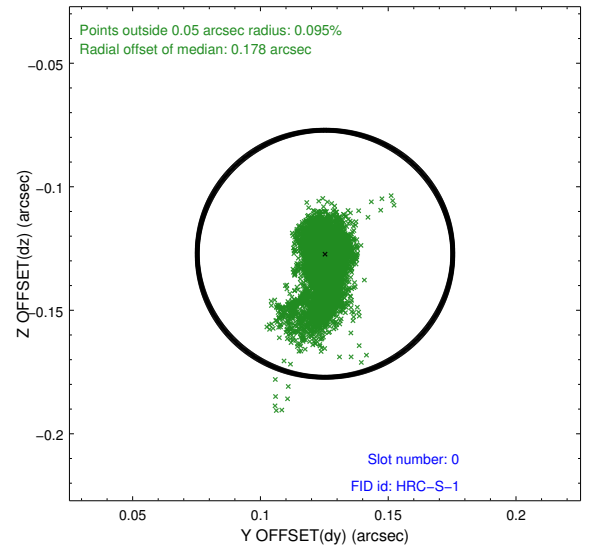
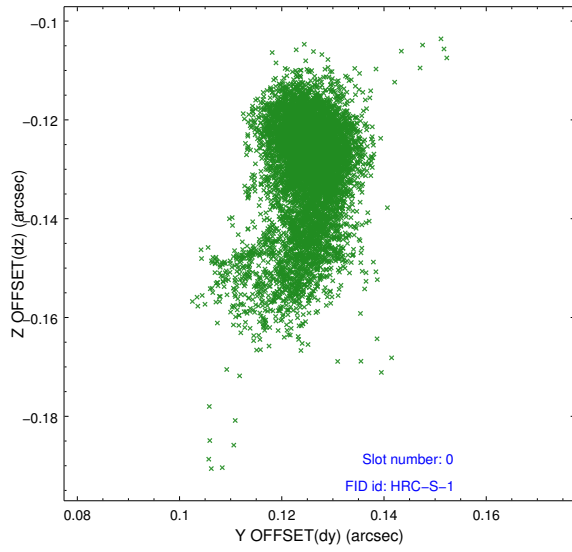


### 2.4.5 Slot 7

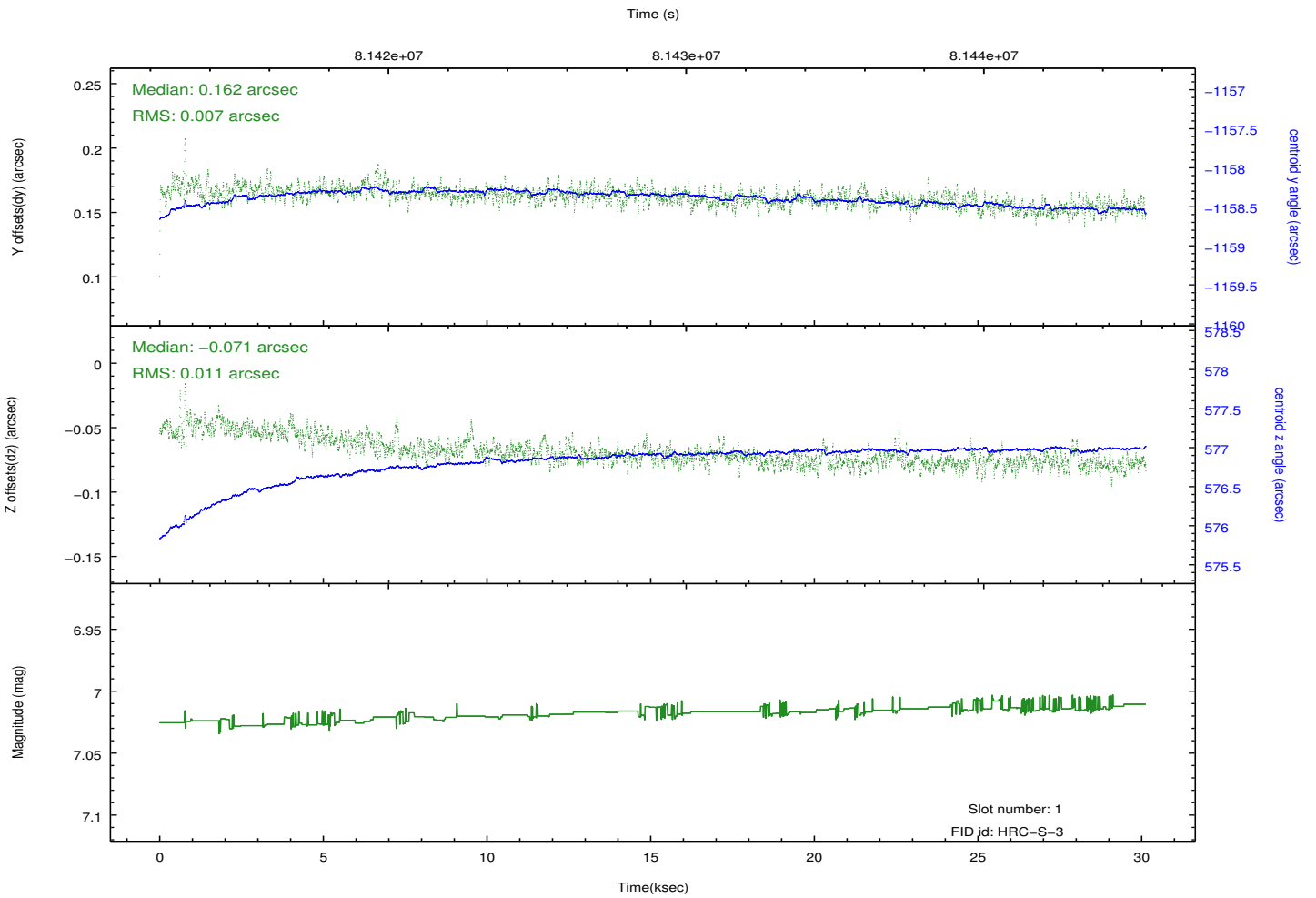
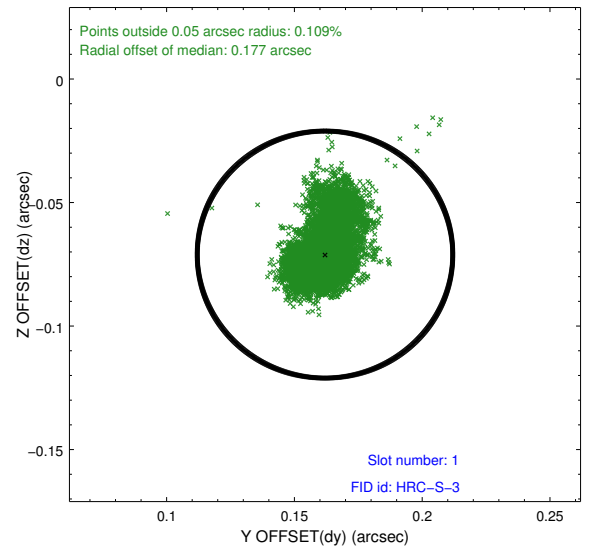
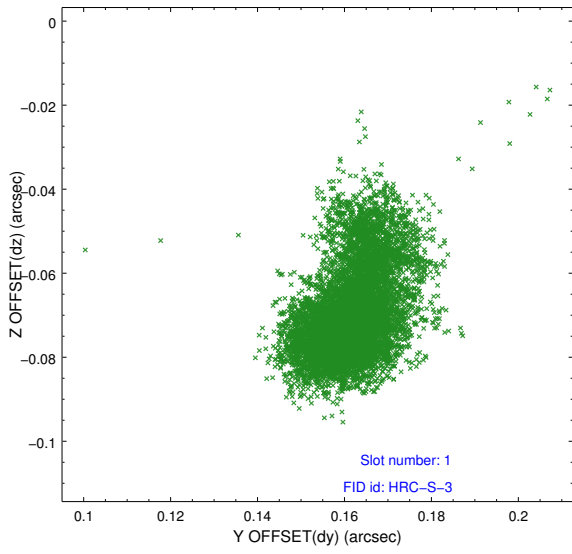


## 2.5 FID Slots

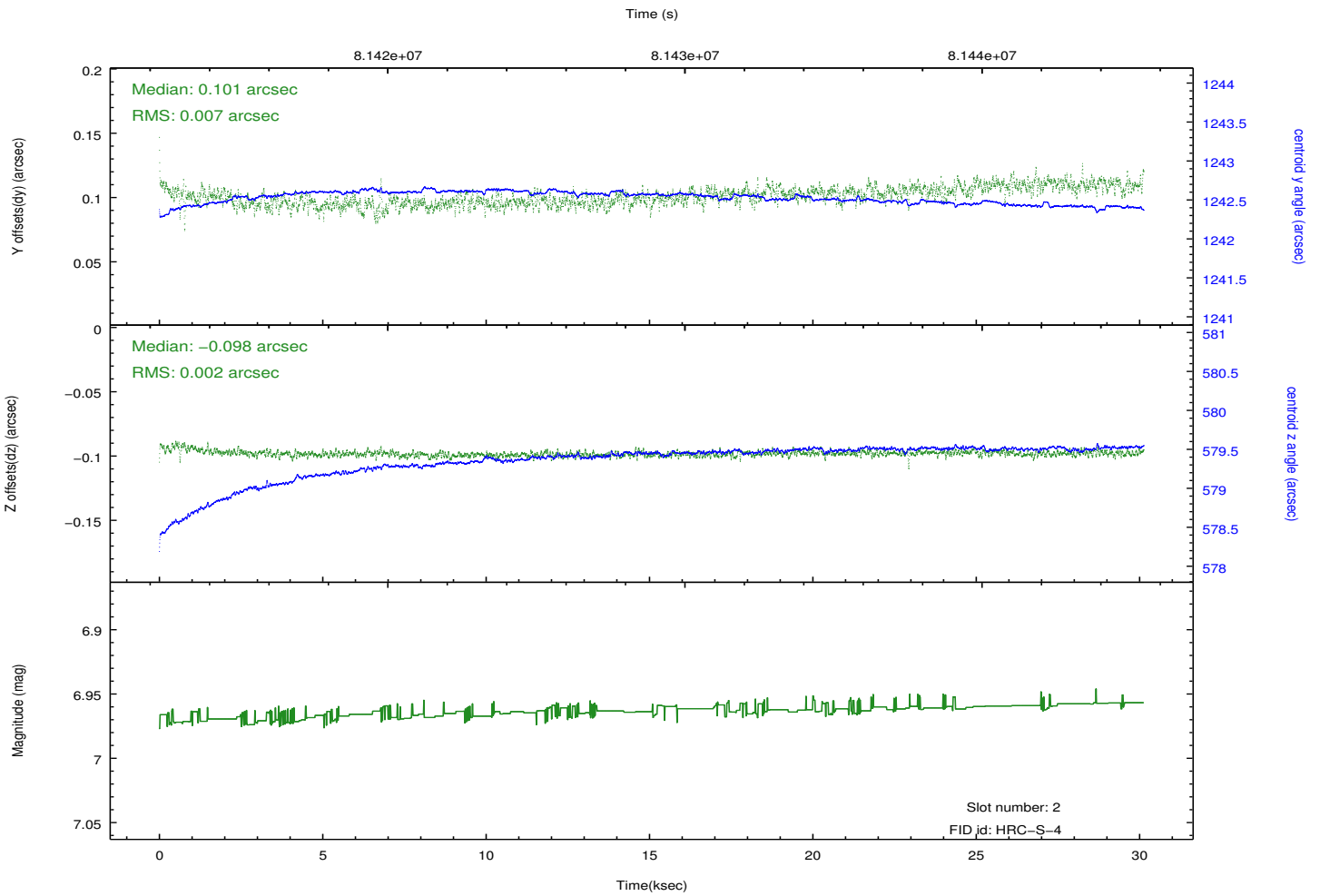
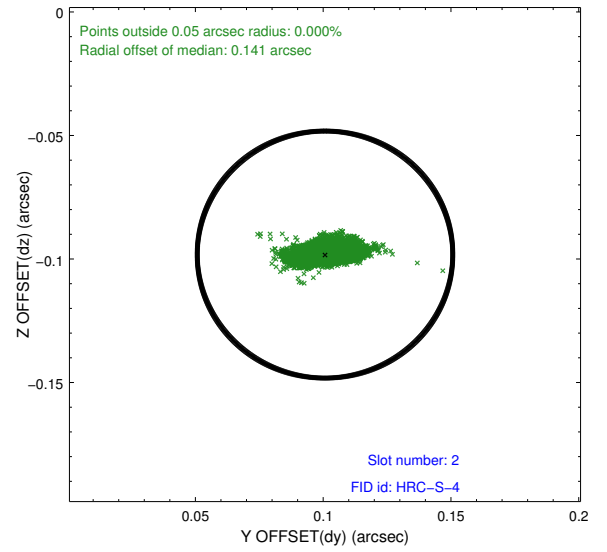
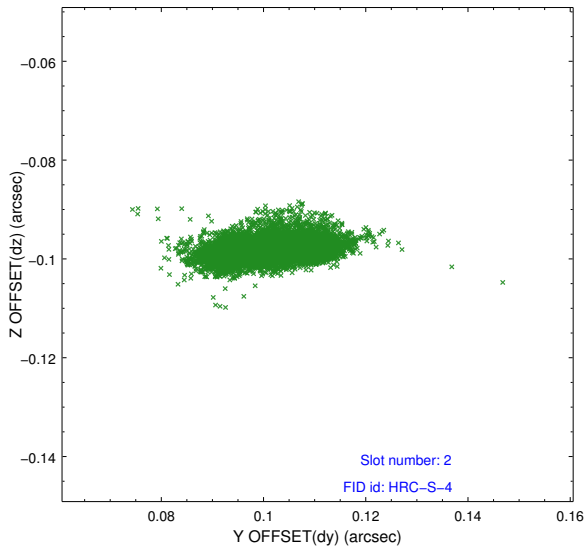
### 2.5.1 Slot 0



## 2.5.2 Slot 1



### 2.5.3 Slot 2



# A Summary

## A.1 Status

V&V Scientist	Beth Sundheim
V&V Date (YYYY-MM-DD)	2013.07.02
V&V Edition	1
V&V Disposition and Status	OK
V&V Charge Time	29.795

## A.2 Comments