

V&V Reference Report

L2 ASCDS Version : 8.4.5

Observation 2049 - L2 Version 3
Chandra X-Ray Center

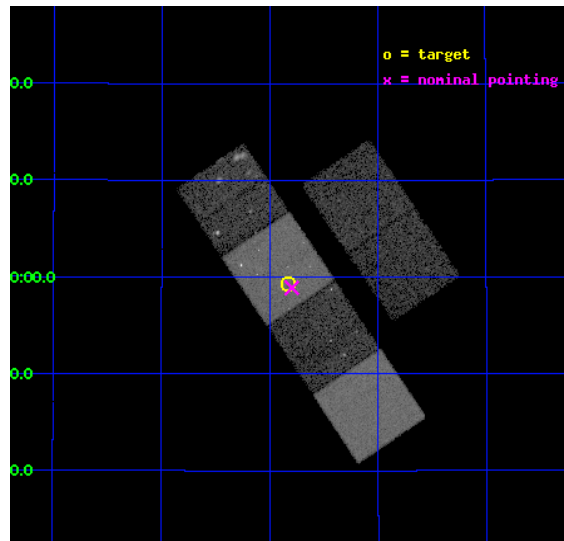
L2 Processing Date : Sep 3 2012

Contents

1	Front	2
2	OBI	3
2.1	OBI	3
2.1.1	Images	3
2.1.2	Bias	3
2.1.3	Parameters	4
2.1.4	Events	4
2.2	Compared Parameters	5
2.3	Aspect	6
2.4	Star Slots	9
2.4.1	Slot 3	9
2.4.2	Slot 4	10
2.4.3	Slot 5	11
2.4.4	Slot 6	12
2.4.5	Slot 7	13
2.5	FID Slots	14
2.5.1	Slot 0	14
2.5.2	Slot 1	15
2.5.3	Slot 2	16
A	Summary	17
A.1	Status	17
A.2	Comments	17

1 Front

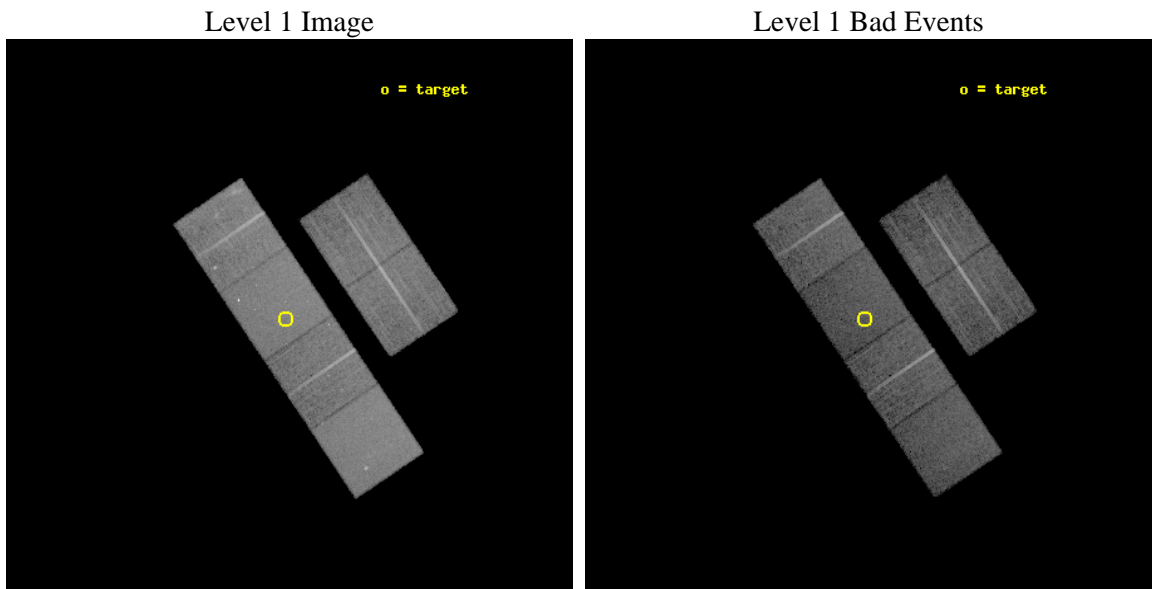
seq_num	600183	Sequence number
obs_id	2049	Observation id
title	2001: A SPACE CENSUS -- SUPERSOFT X-RAY SOURCES AND OTHER X-RAY SOURCES IN M31	Proposal title
observer	Dr. R. Di Stefano	Principal investigator
object	M31_2	Source name
dtcycle	0	
cycle	P	events from which exps? Prim/Second/Both
ra_targ	10.457917	Observer's specified target RA [deg]
dec_targ	40.988889	Observer's specified target Dec [deg]
ra_nom	10.448791450537	Nominal RA [deg]
dec_nom	40.981869934581	Nominal Dec [deg]
roll_nom	236.05514661989	Nominal Roll [deg]
revision	3	Processing version of data
ontime	14755.200013727	Sum of GTIs [s]
livetime	14568.360786638	Livetime [s]
ontime2	14755.200013727	Sum of GTIs [s]
ontime3	14755.200013727	Sum of GTIs [s]
ontime5	14755.200013727	Sum of GTIs [s]
ontime6	14755.200013727	Sum of GTIs [s]
ontime7	14755.200013727	Sum of GTIs [s]
ontime8	14751.9591631	Sum of GTIs [s]
l2events	145707	Number of level 2 events



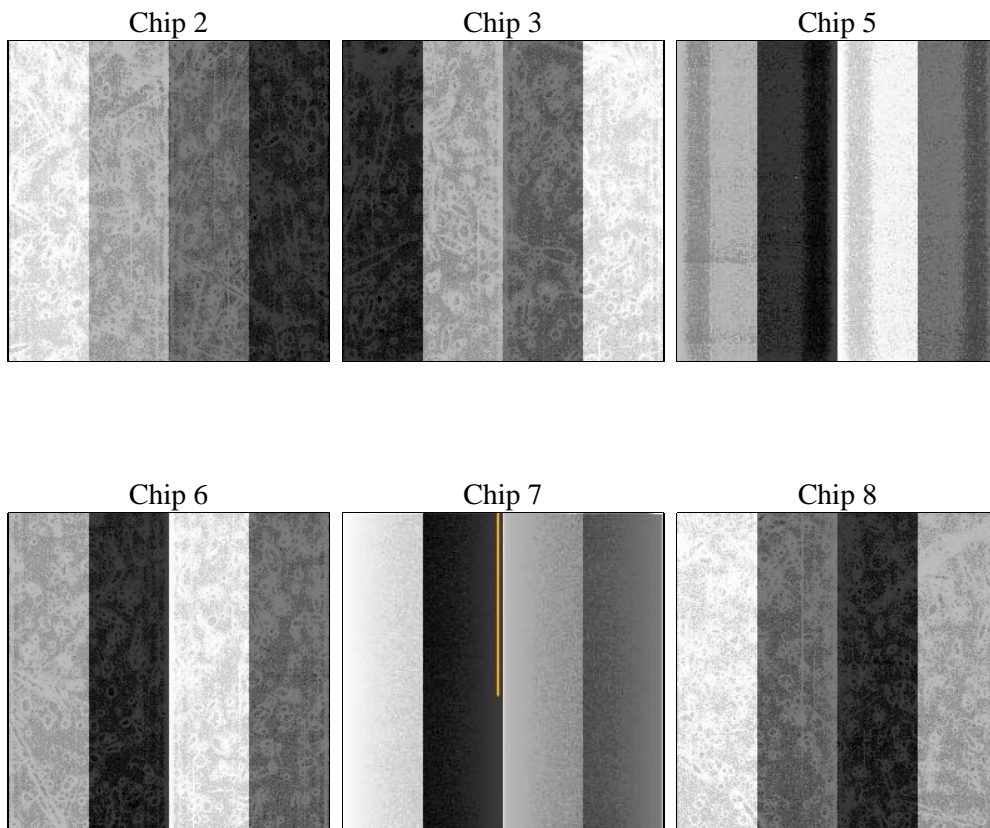
2 OBI

2.1 OBI

2.1.1 Images



2.1.2 Bias



2.1.3 Parameters

obi_num	0	Obi number	sched_exp_time	15000.000000	[s] Scheduled observation exposure time
ascdsver	8.4.5	Processing system revision	ontime	14755.200013727	Sum of GTIs [s]
caldbver	4.5.1.1	 	ontime2	14755.200013727	Sum of GTIs [s]
date	2012-09-03T03:18:45	Date and time of file creation	ontime3	14755.200013727	Sum of GTIs [s]
revision	3	Processing version of data	ontime5	14755.200013727	Sum of GTIs [s]
			ontime6	14755.200013727	Sum of GTIs [s]
			ontime7	14755.200013727	Sum of GTIs [s]
			ontime8	14751.9591631	Sum of GTIs [s]
			l1events	632078	Number of level 1 events

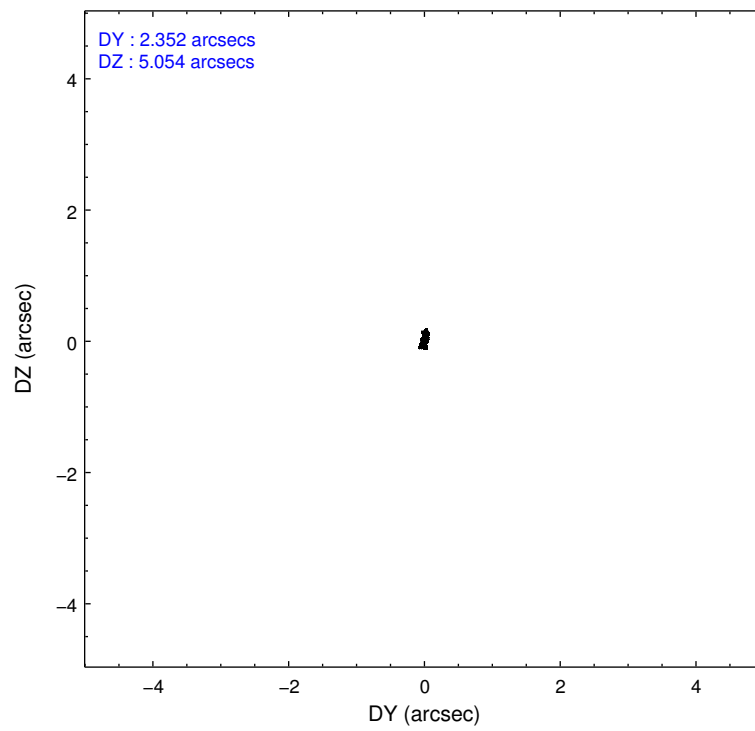
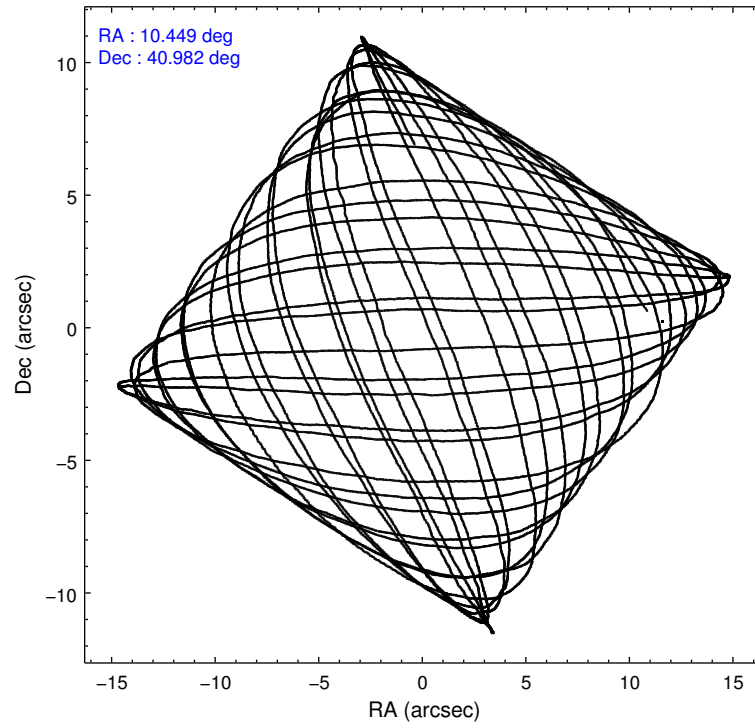
2.1.4 Events

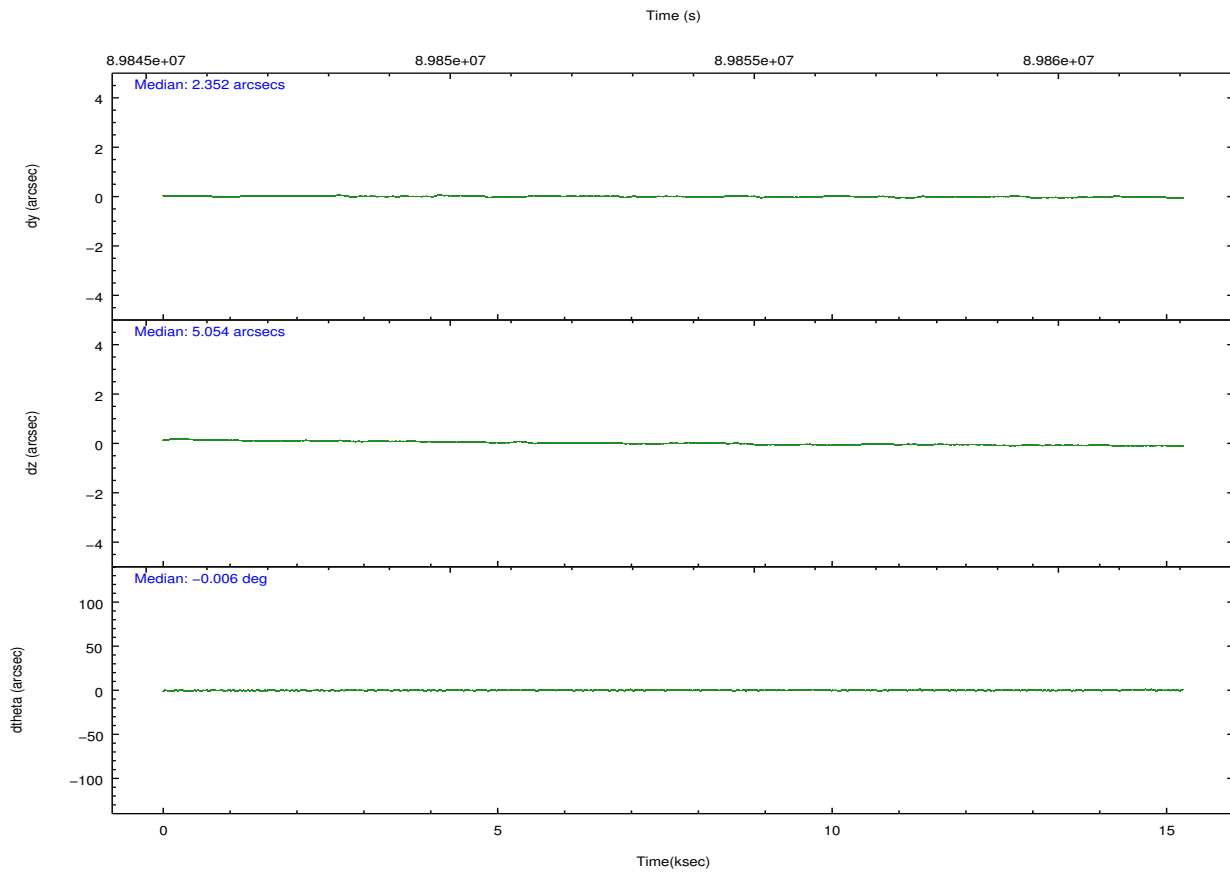
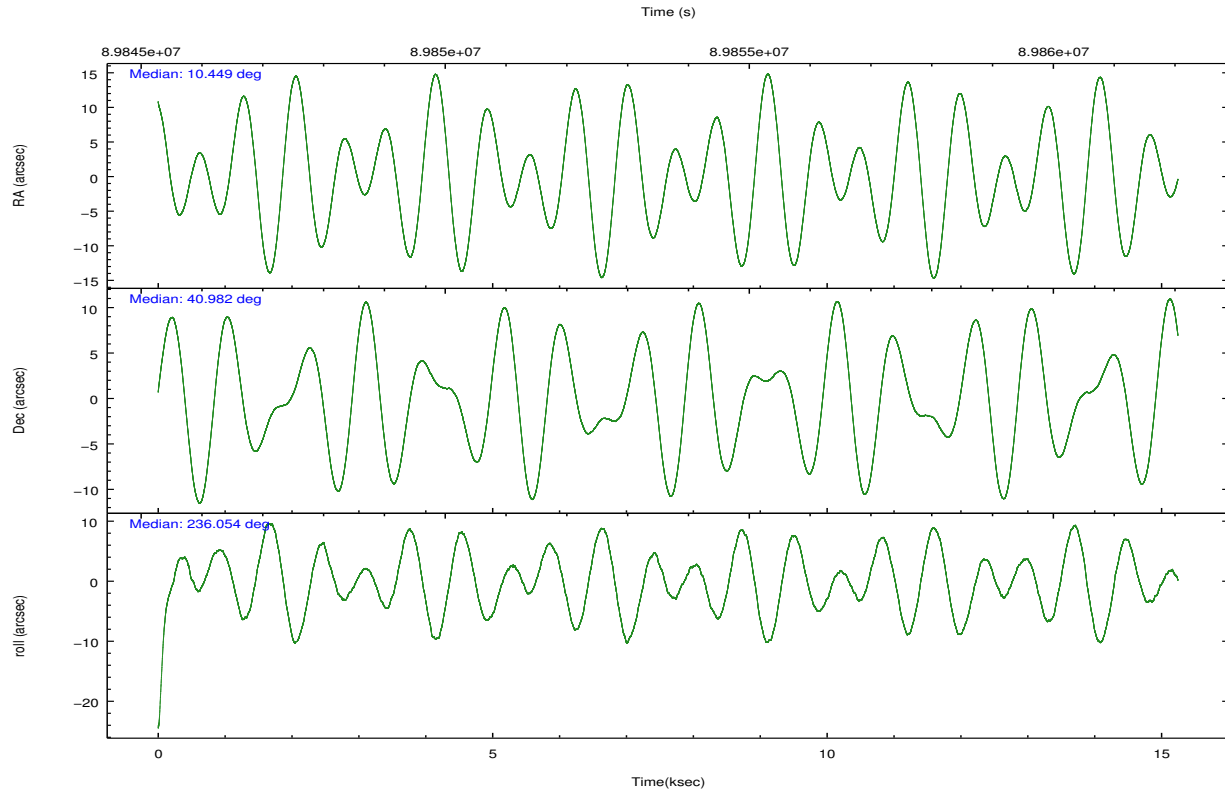
	ccd 2	ccd 3	ccd 5	ccd 6	ccd 7	ccd 8		ccd 2	ccd 3	ccd 5	ccd 6	ccd 7	ccd 8
level 1 events	92339	88466	121710	92127	117785	119651	grade 0 events	3970	4348	4845	5043	5969	10220
rejected events	82730	78446	66128	80909	64678	93616		4%	4%	3%	5%	5%	8%
rejected %	89%	88%	54%	87%	54%	78%	grade 1 events	44	33	116	43	112	73
								0%	0%	0%	0%	0%	0%
							grade 2 events	2016	1907	16198	2135	10605	5158
								2%	2%	13%	2%	9%	4%
							grade 3 events	924	1009	2841	1057	4951	2543
								1%	1%	2%	1%	4%	2%
							grade 4 events	961	1000	2578	974	4966	2361
								1%	1%	2%	1%	4%	1%
							grade 5 events	3056	3217	9353	3658	10651	4525
								3%	3%	7%	3%	9%	3%
							grade 6 events	1739	1758	29132	2011	26627	5754
								1%	1%	23%	2%	22%	4%
							grade 7 events	79629	75194	56647	77206	53904	89017
								86%	84%	46%	83%	45%	74%

2.2 Compared Parameters

Parameter	Planned	Actual	Parameter	Planned	Actual
Instrument	ACIS	ACIS	Obspar format version number	7	7
Detector	ACIS-235678	ACIS-235678	Obspar file type	PREDICTED	ACTUAL
Grating	NONE	NONE	Obspar update status	NONE	UPDATED
Data mode	FAINT	FAINT	Number of optional ACIS chips dropped	0	0
Observation mode	POINTING	POINTING	On-chip summing requested	N	N
[deg] Pointing RA	10.451003	10.44879145053713	Subarray requested	NONE	NONE
[deg] Pointing Dec	41.009123	40.98186993458145	Alternating exposures requested	N	N
[deg] Pointing Roll	235.897066	236.0551466198929	[s] Primary exposure time	0.000000	3.2
[mm] SIM focus pos	-0.684267	-0.6828225247311905			
[mm] SIM defocus	0	0.001444936568705701			
[mm] SIM translation stage pos	-190.132523	-190.1400660498719			
[mm] SIM translation stage offset	0	0.00754346686406393			
[s] Observation start time (MET)	89846231.184000	89845836.89116199			
Observation start date	2000-11-05T21:16:07	2000-11-05T21:10:36			
[s] Observation end time (MET)	89861231.184000	89862127.216777			
Observation end date	2000-11-06T01:26:07	2000-11-06T01:42:07			
Read mode	TIMED	TIMED			

2.3 Aspect



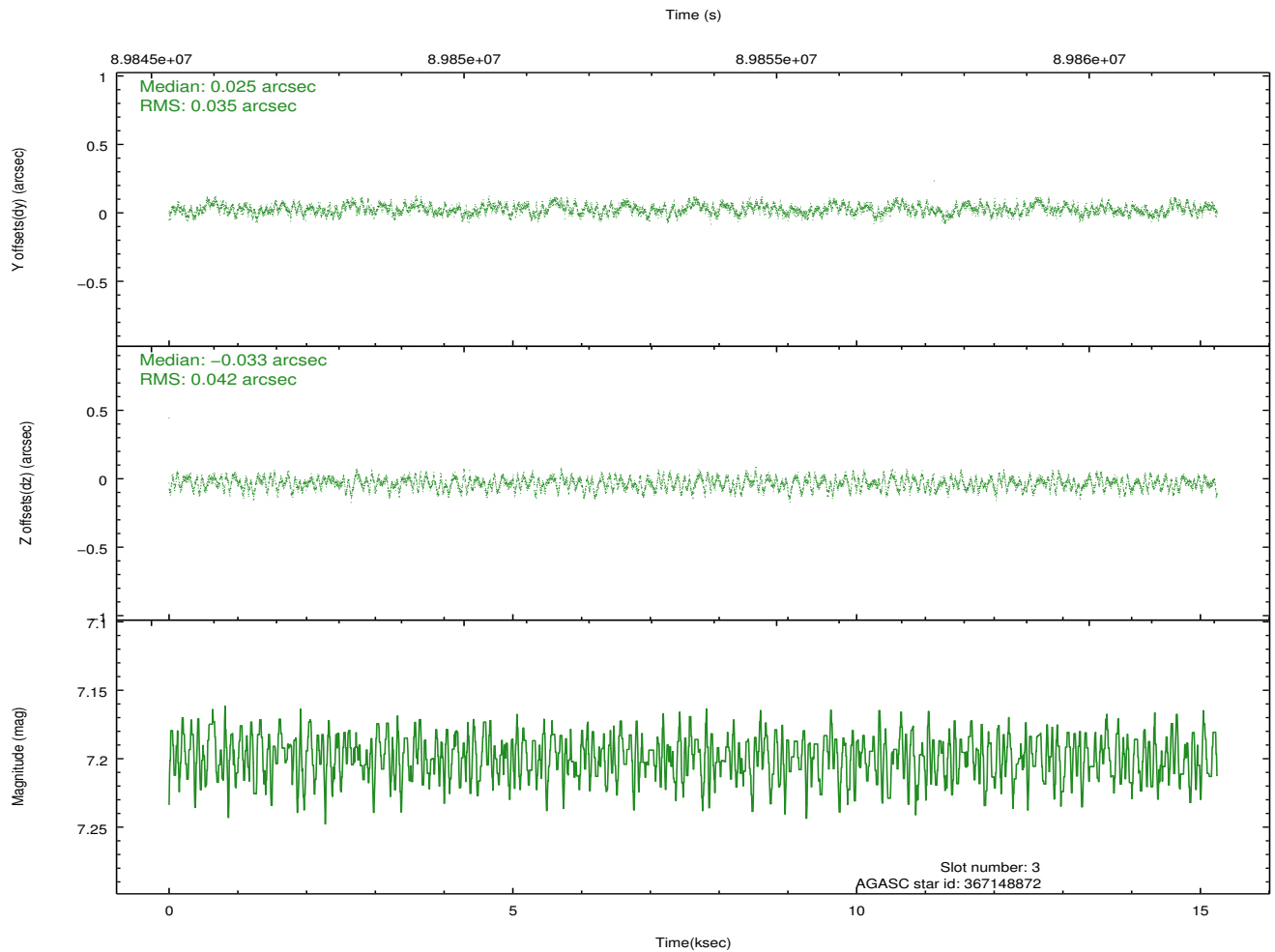
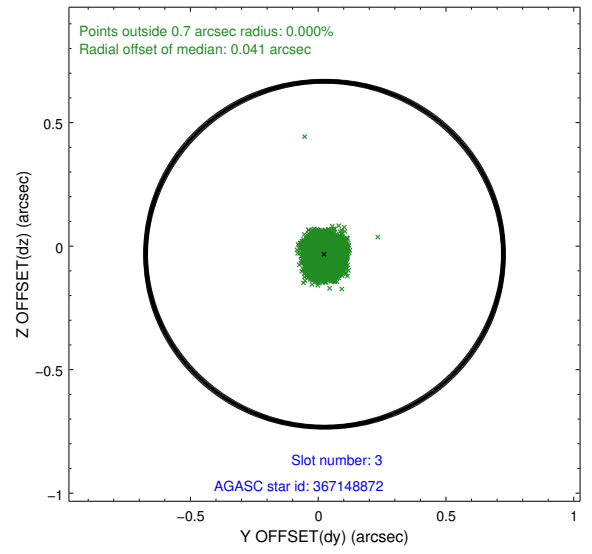
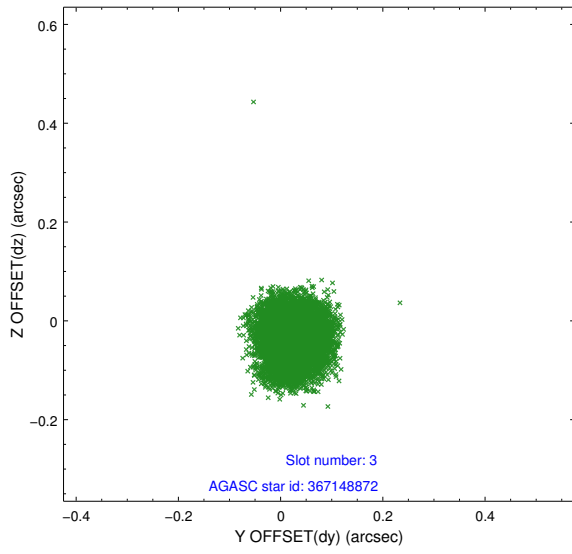


Slot Statistics

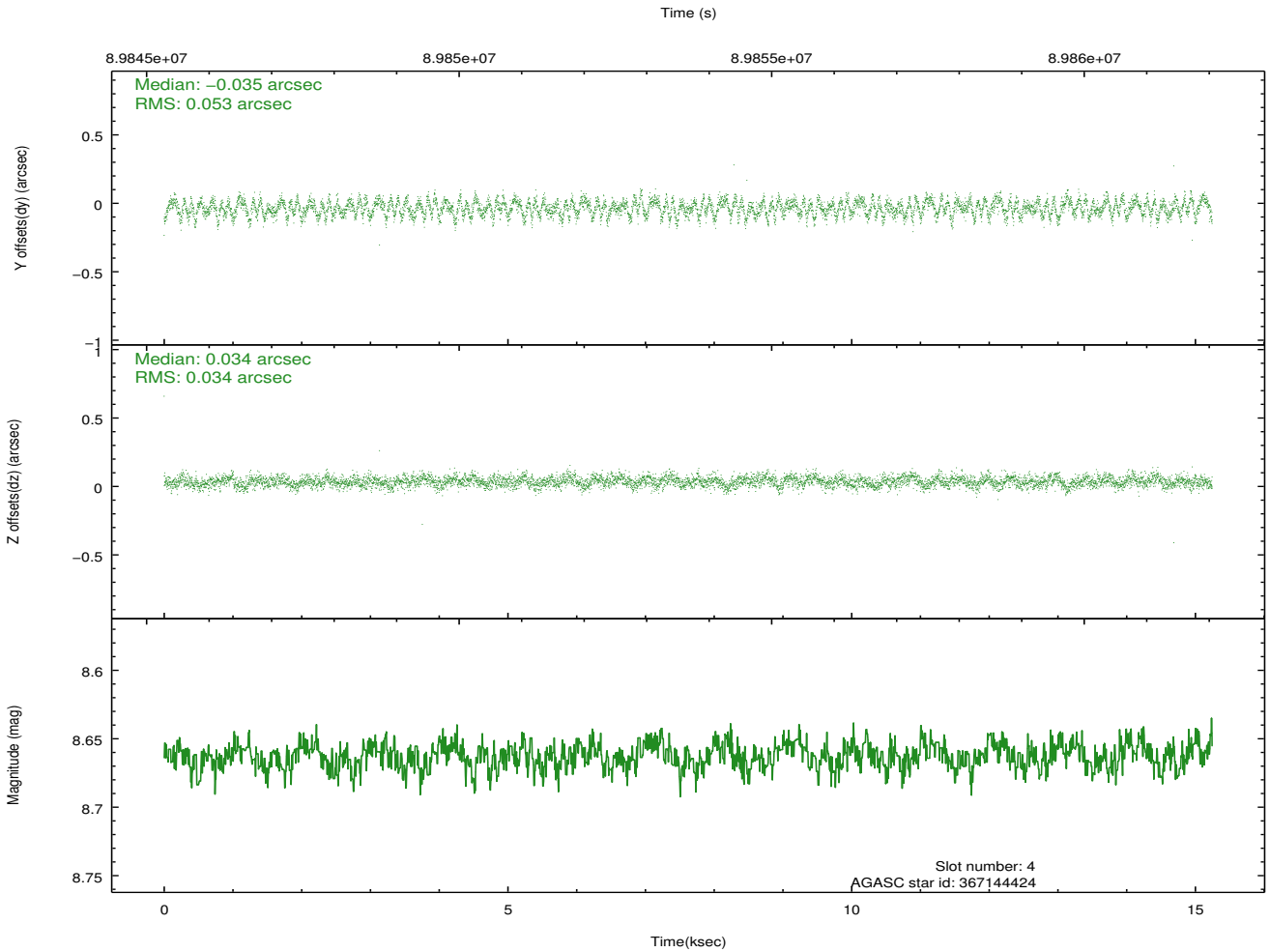
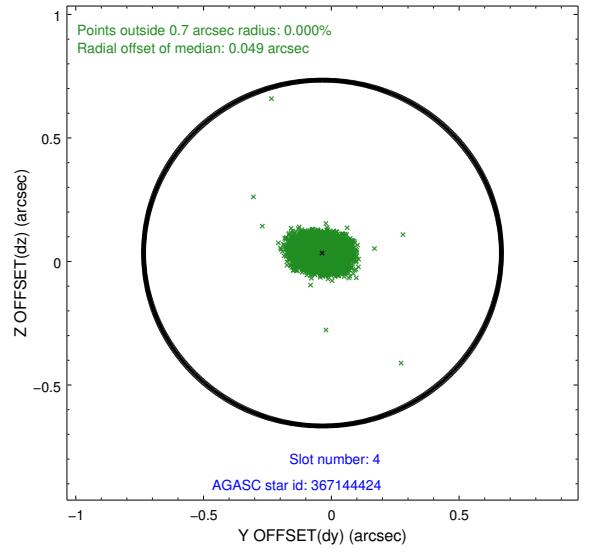
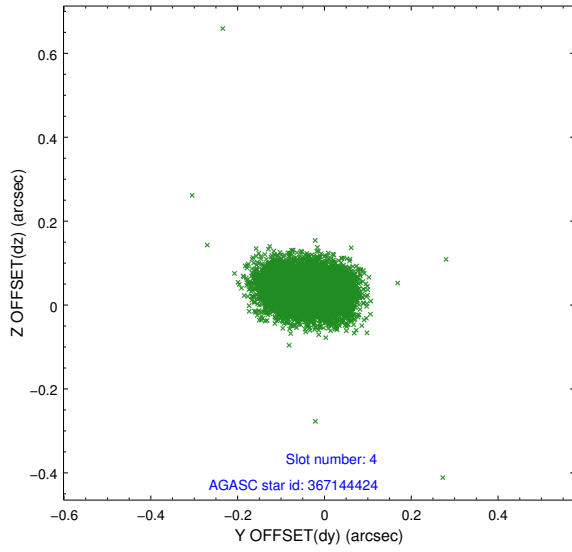
slot	status	id	mag	n_pts	med_dy	med_dz	dr1	dr2	ra	dec	mean_y	mean_z
0	FID	ACIS-S-1	7.19	3719	0.004	0.023	0.008	0.013	0.000000	0.000000	941.07	-1721.78
1	FID	ACIS-S-4	7.21	3717	-0.017	-0.013	0.007	0.011	0.000000	0.000000	2158.61	182.05
2	FID	ACIS-S-5	7.24	3717	-0.014	0.003	0.006	0.011	0.000000	0.000000	-1807.45	175.96
3	GUIDE	367148872	7.20	7435	0.025	-0.033	0.059	0.089	10.505940	40.688258	873.09	771.14
4	GUIDE	367144424	8.66	7435	-0.035	0.034	0.066	0.108	10.464515	40.309136	2066.56	1443.15
5	GUIDE	367146616	8.86	7436	-0.014	0.019	0.075	0.124	11.418645	41.190163	-2020.62	1796.59
6	GUIDE	367657896	9.02	7434	0.039	-0.012	0.065	0.104	11.197765	41.313576	-2046.45	1052.16
7	GUIDE	367665472	9.48	7436	-0.021	-0.008	0.084	0.135	10.241611	41.730843	-1836.17	-1923.58

2.4 Star Slots

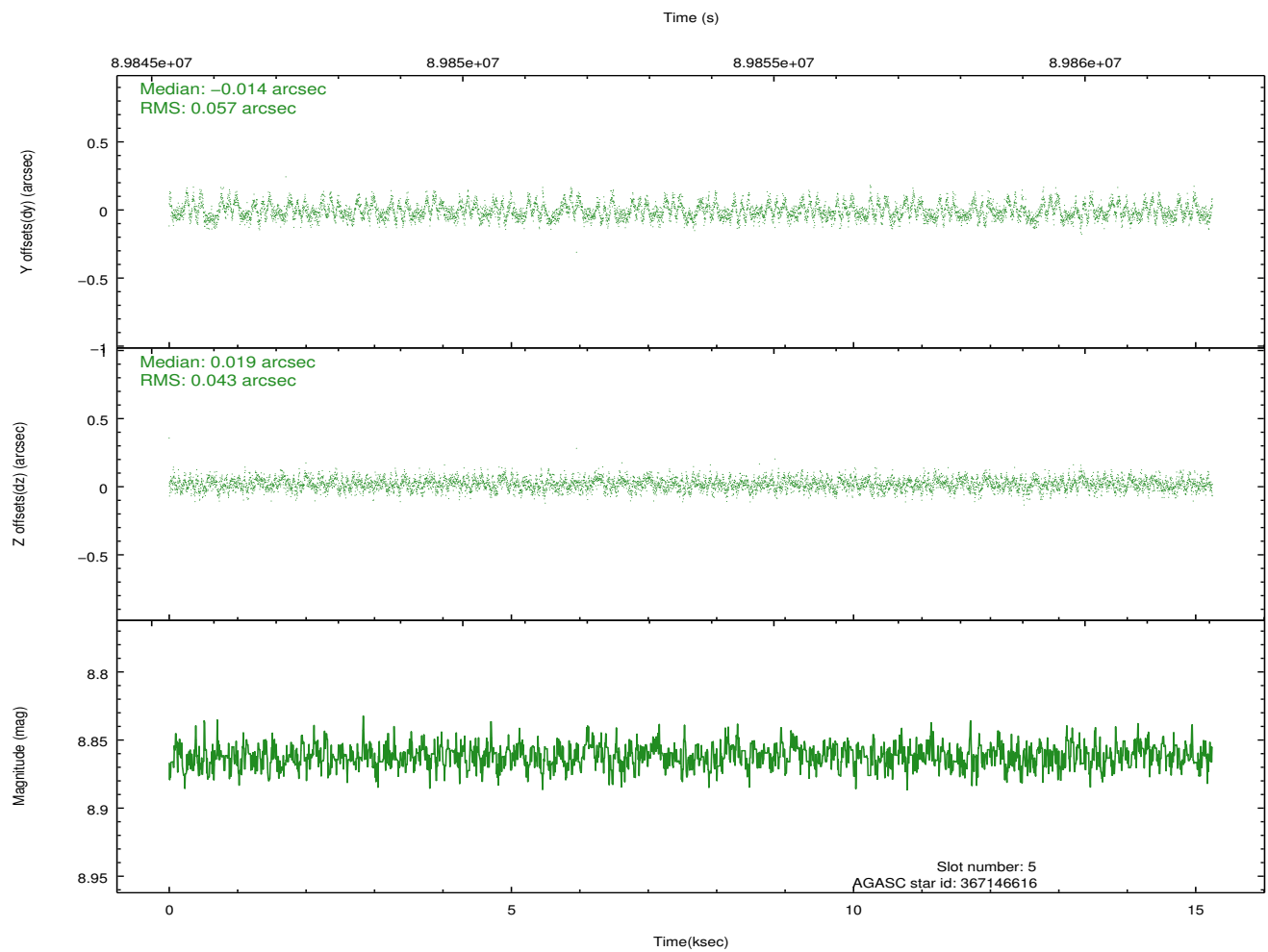
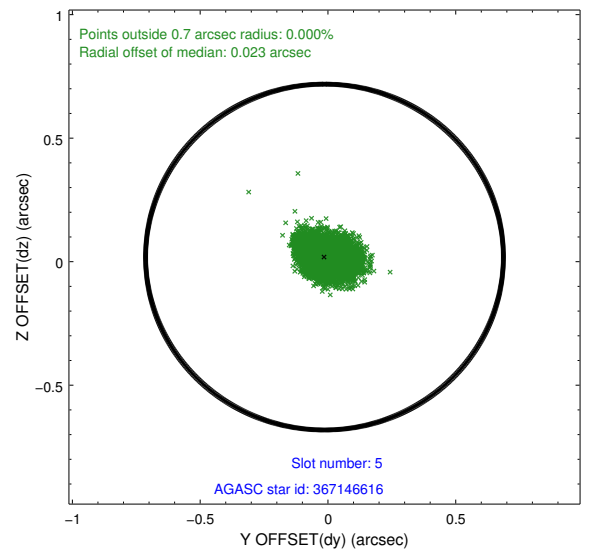
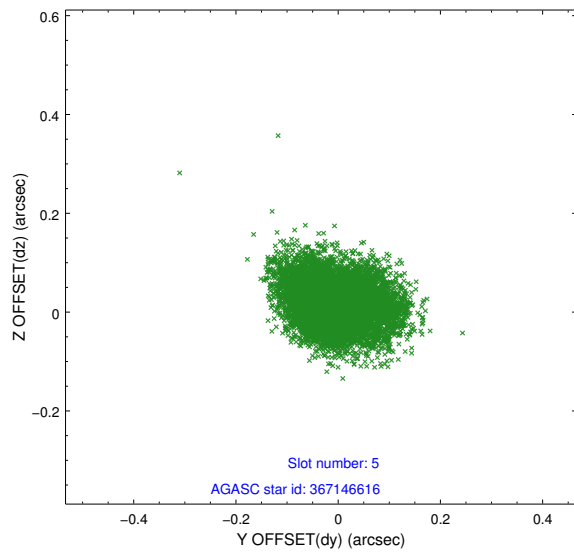
2.4.1 Slot 3



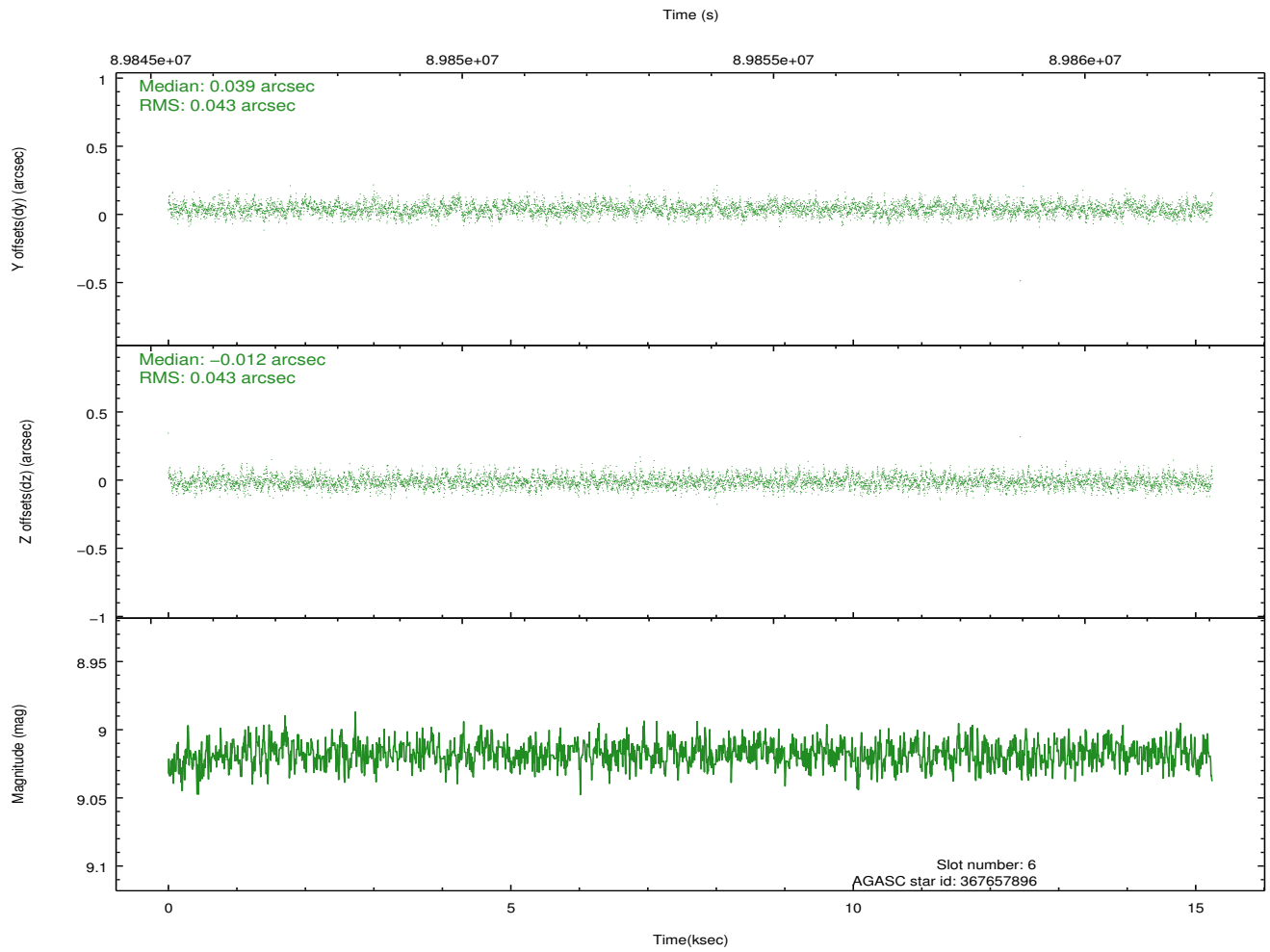
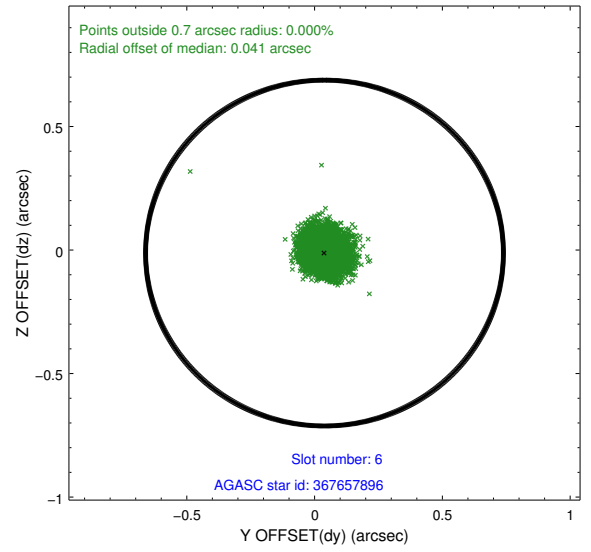
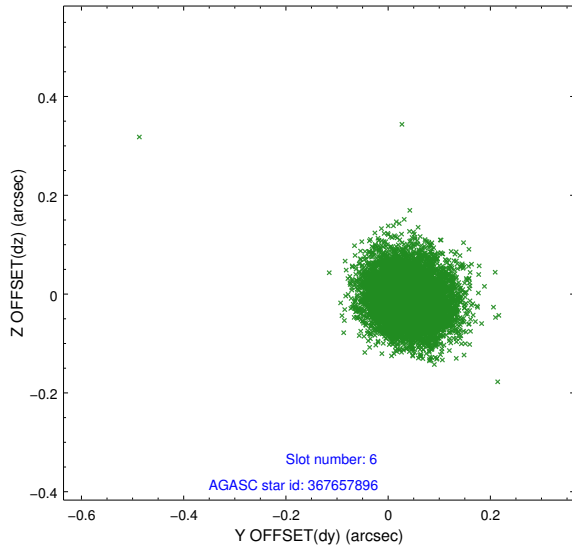
2.4.2 Slot 4



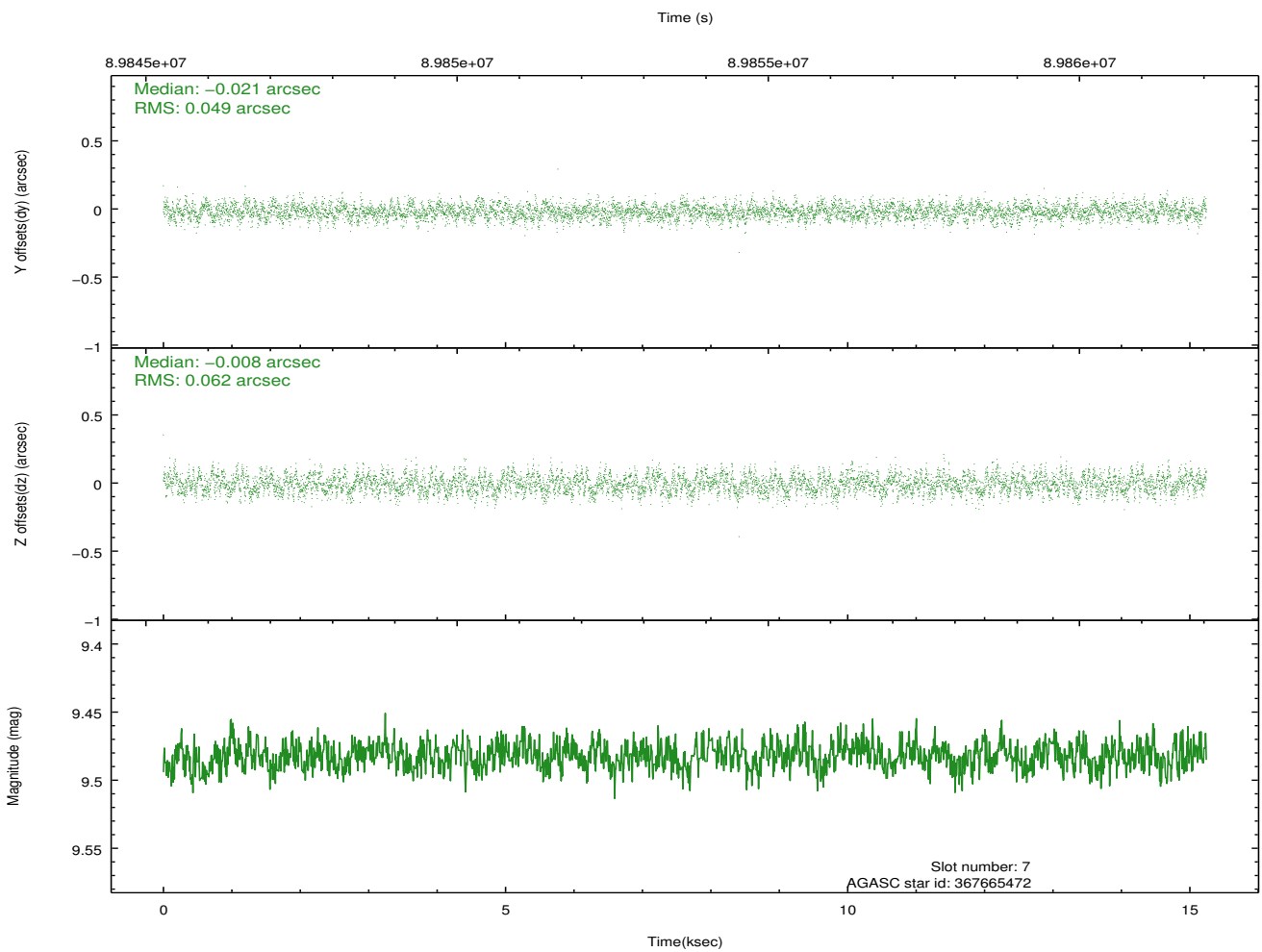
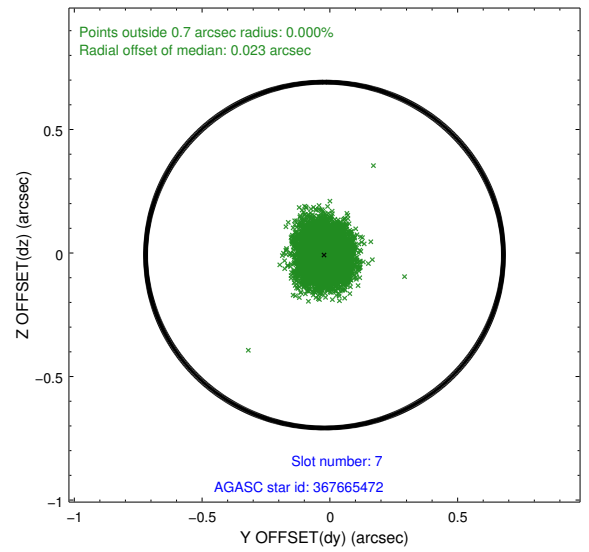
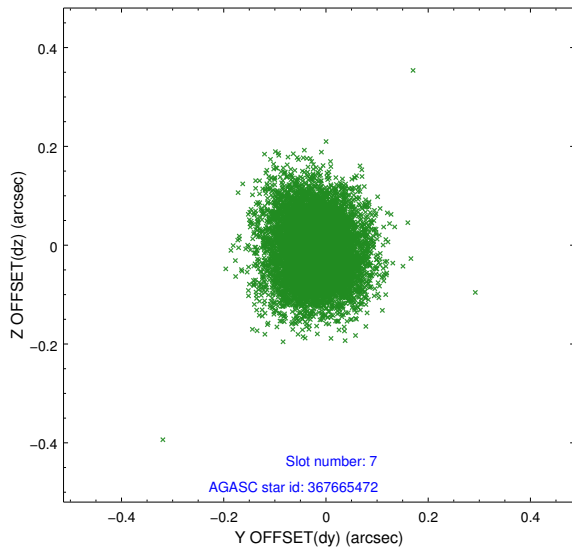
2.4.3 Slot 5



2.4.4 Slot 6

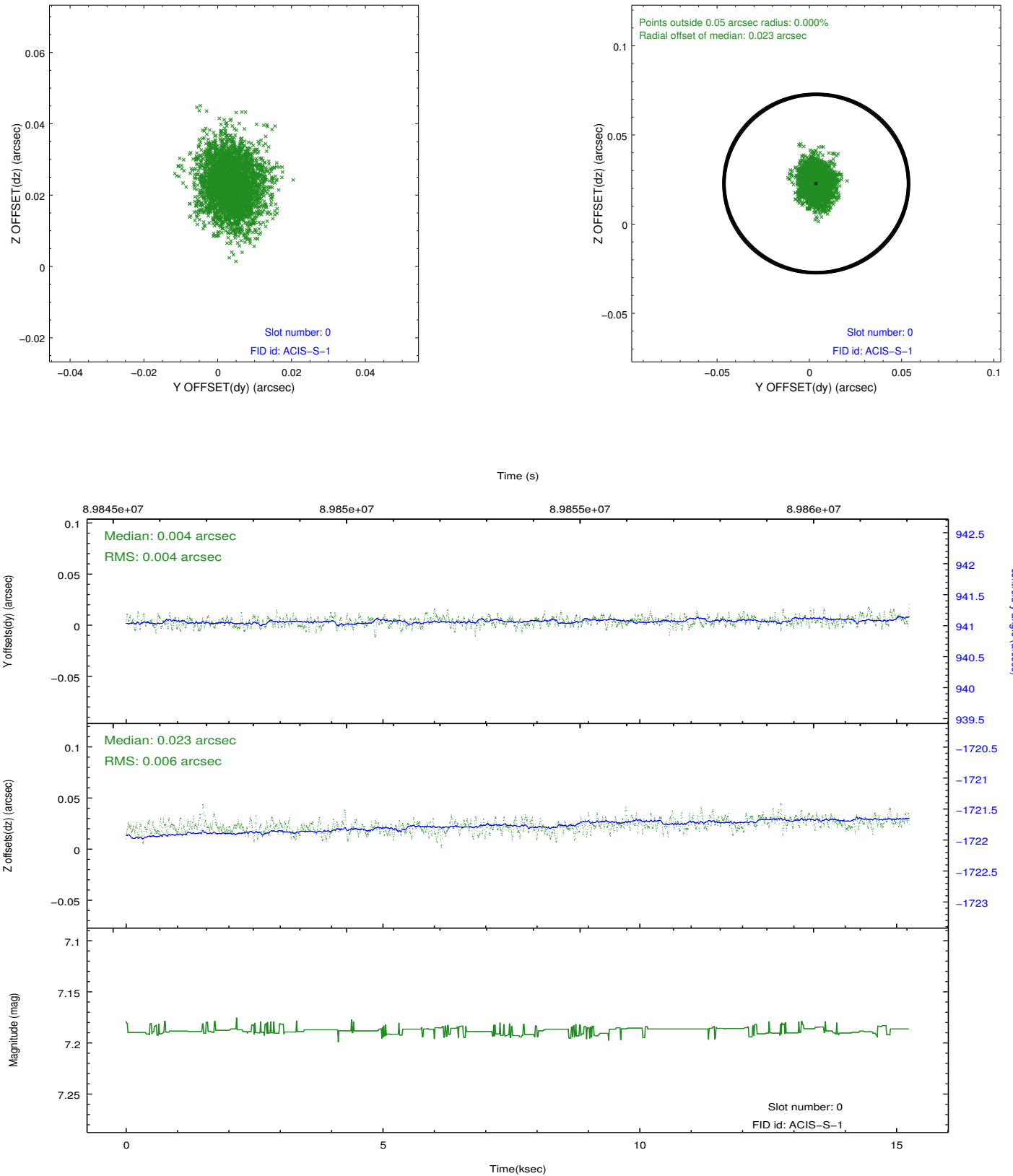


2.4.5 Slot 7

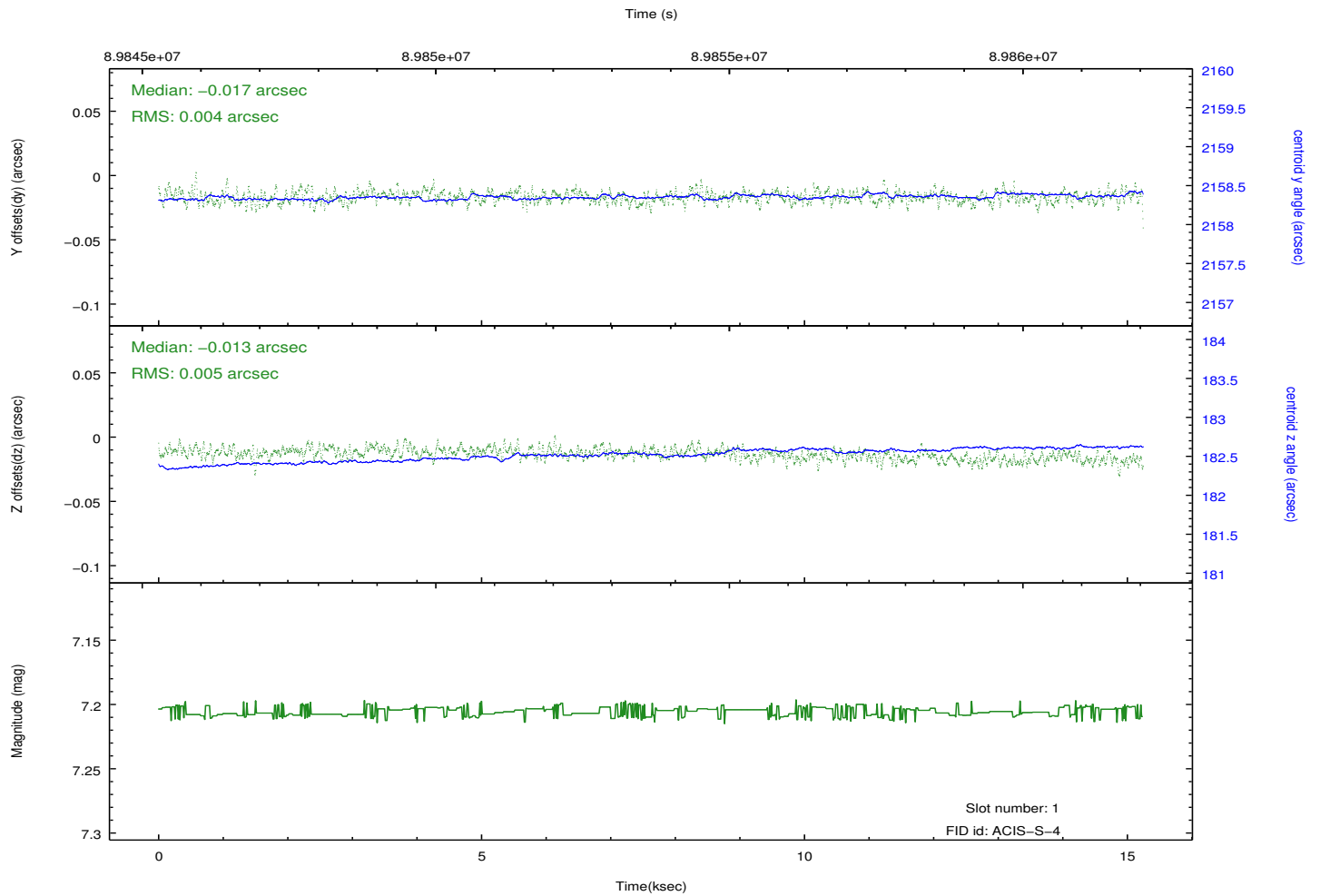
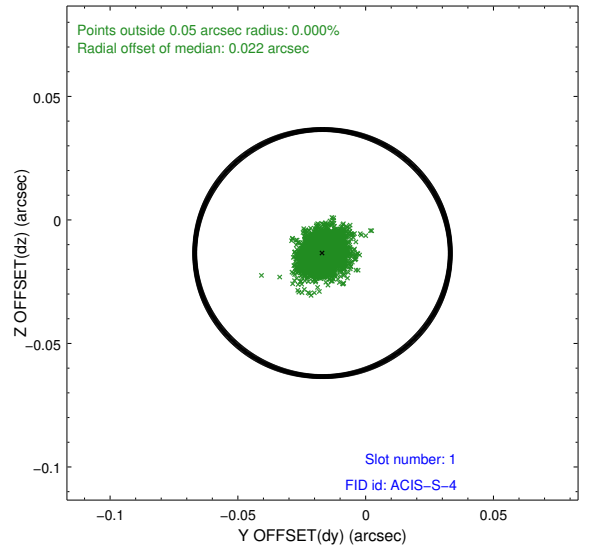
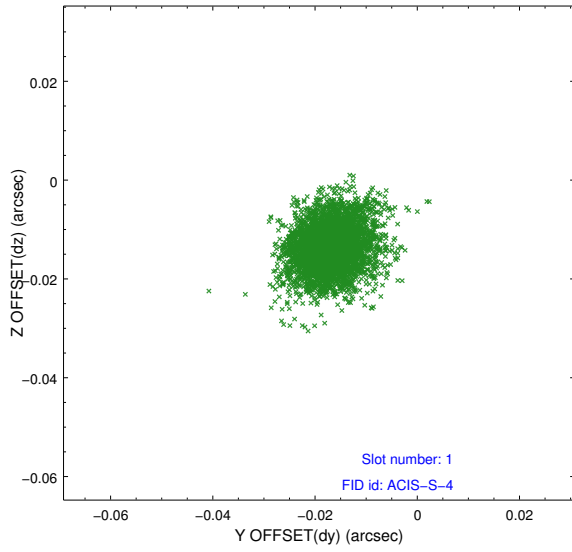


2.5 FID Slots

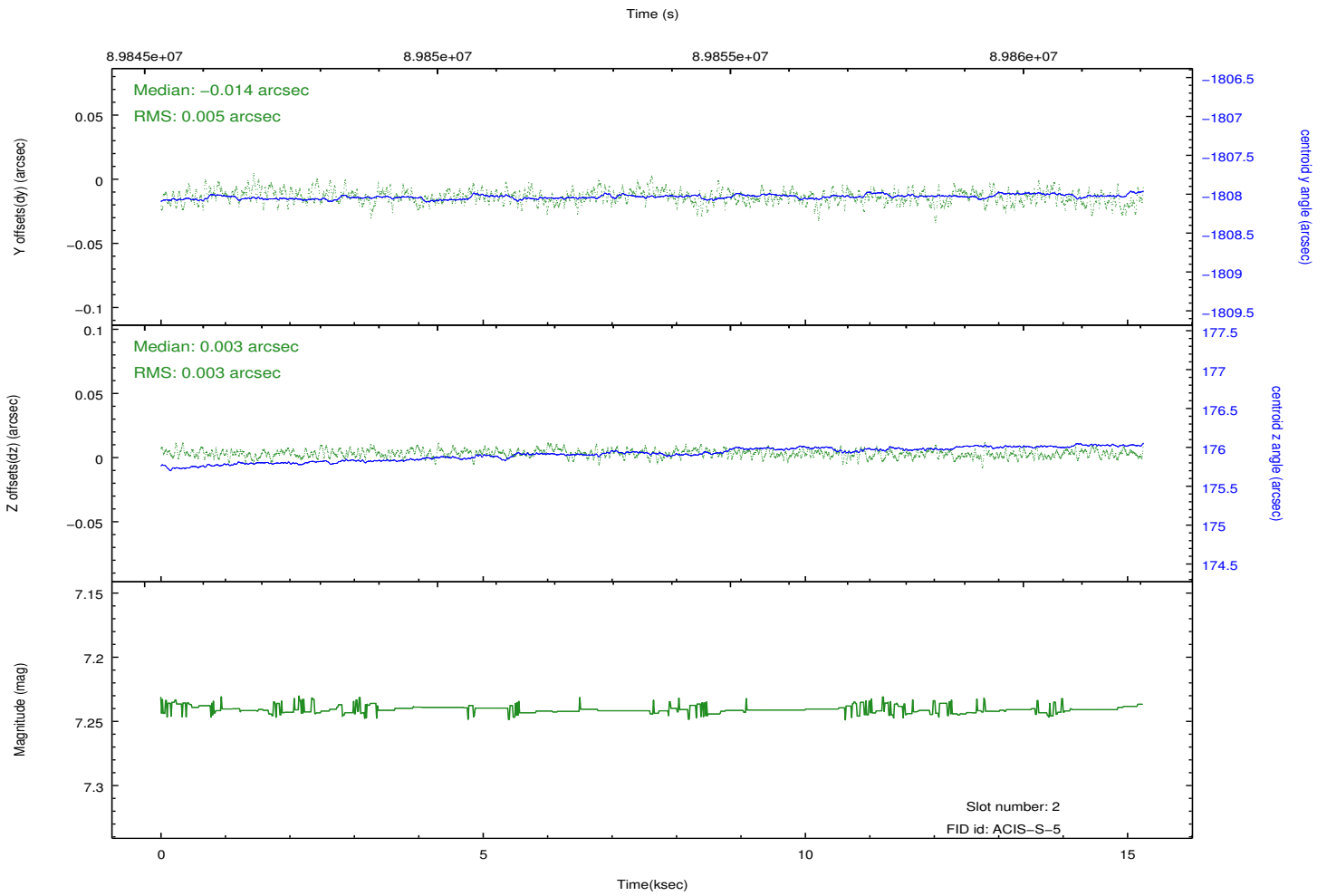
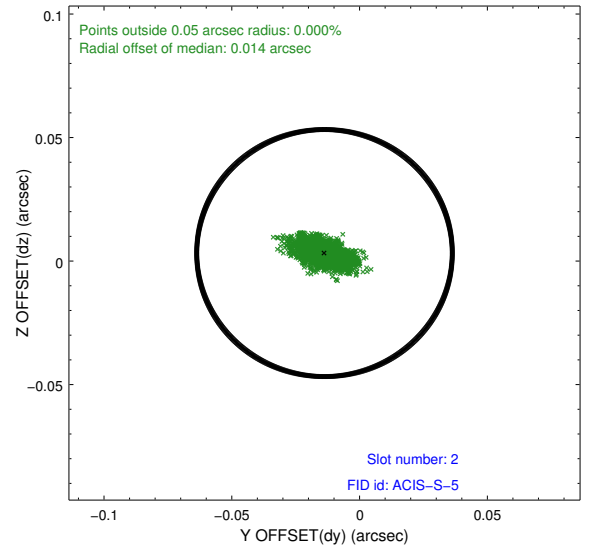
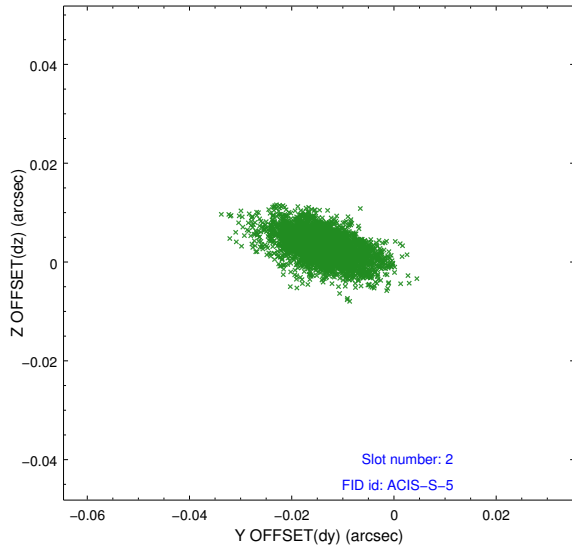
2.5.1 Slot 0



2.5.2 Slot 1



2.5.3 Slot 2



A Summary

A.1 Status

V&V Scientist	Beth Sundheim
V&V Date (YYYY-MM-DD)	2012.09.11
V&V Edition	1
V&V Disposition and Status	OK
V&V Charge Time	14.758

A.2 Comments