

V&V Reference Report

L2 ASCDS Version : 8.4.5

Observation 3009 - L2 Version 3
Chandra X-Ray Center

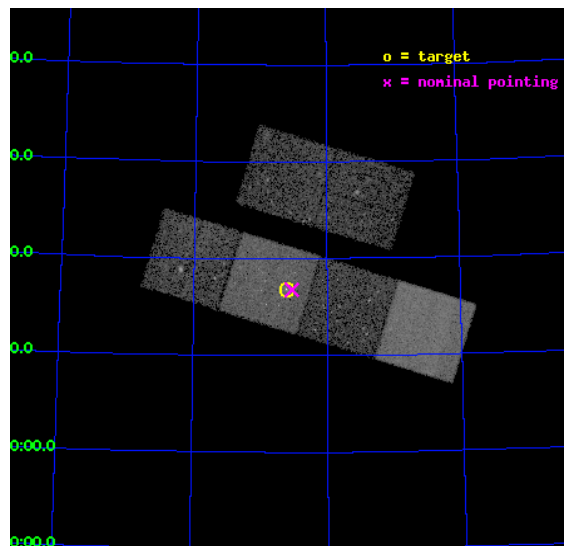
L2 Processing Date : Oct 15 2012

Contents

1	Front	2
2	OBI	3
2.1	OBI	3
2.1.1	Images	3
2.1.2	Bias	3
2.1.3	Parameters	4
2.1.4	Events	4
2.2	Compared Parameters	5
2.3	Aspect	6
2.4	Star Slots	9
2.4.1	Slot 3	9
2.4.2	Slot 4	10
2.4.3	Slot 5	11
2.4.4	Slot 6	12
2.4.5	Slot 7	13
2.5	FID Slots	14
2.5.1	Slot 0	14
2.5.2	Slot 1	15
2.5.3	Slot 2	16
A	Summary	17
A.1	Status	17
A.2	Comments	17

1 Front

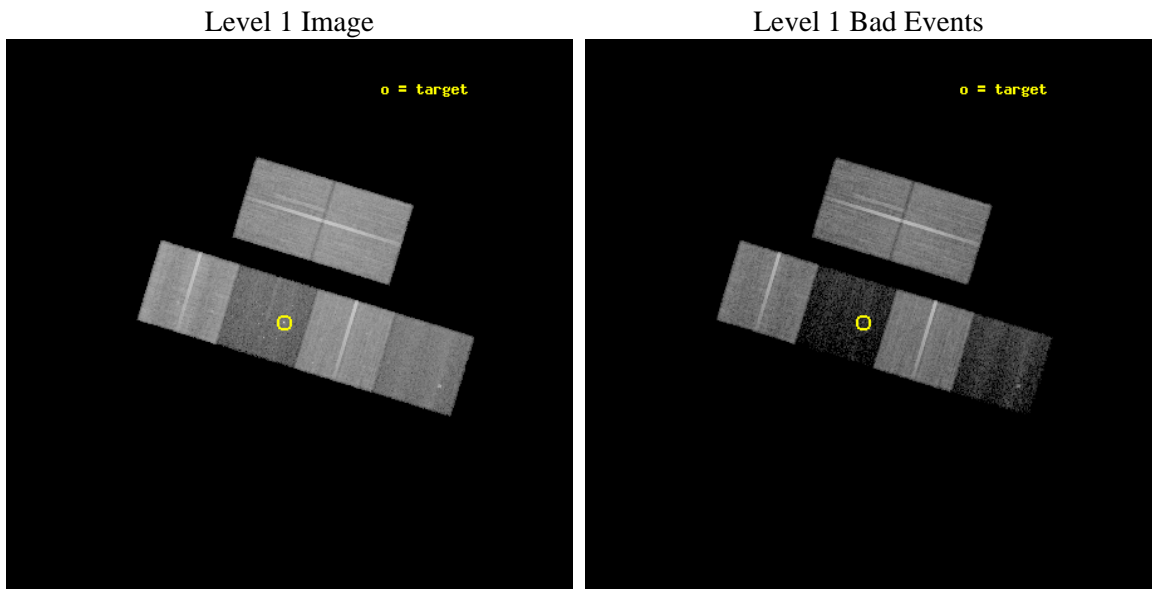
seq_num	700448	Sequence number
obs_id	3009	Observation id
title	INVERSE COMPTON SCATTERING IN POWERFUL RADIO GALAXIES: CONSTRAINING THE ELECTRON SPECTRUM	Proposal title
observer	Dr. Gianfranco Brunetti	Principal investigator
object	3C 6.1	Source name
dtcycle	0	
cycle	P	events from which exps? Prim/Second/Both
ra_targ	4.131667	Observer's specified target RA [deg]
dec_targ	79.281111	Observer's specified target Dec [deg]
ra_nom	4.080067635974	Nominal RA [deg]
dec_nom	79.279968034526	Nominal Dec [deg]
roll_nom	196.96430446798	Nominal Roll [deg]
revision	3	Processing version of data
ontime	36959.529936135	Sum of GTIs [s]
livetime	36491.526113726	Livetime [s]
ontime2	36949.848085374	Sum of GTIs [s]
ontime3	36956.165845871	Sum of GTIs [s]
ontime5	36959.488896132	Sum of GTIs [s]
ontime6	36952.965895653	Sum of GTIs [s]
ontime7	36959.529936135	Sum of GTIs [s]
ontime8	36956.12478596	Sum of GTIs [s]
l2events	101907	Number of level 2 events



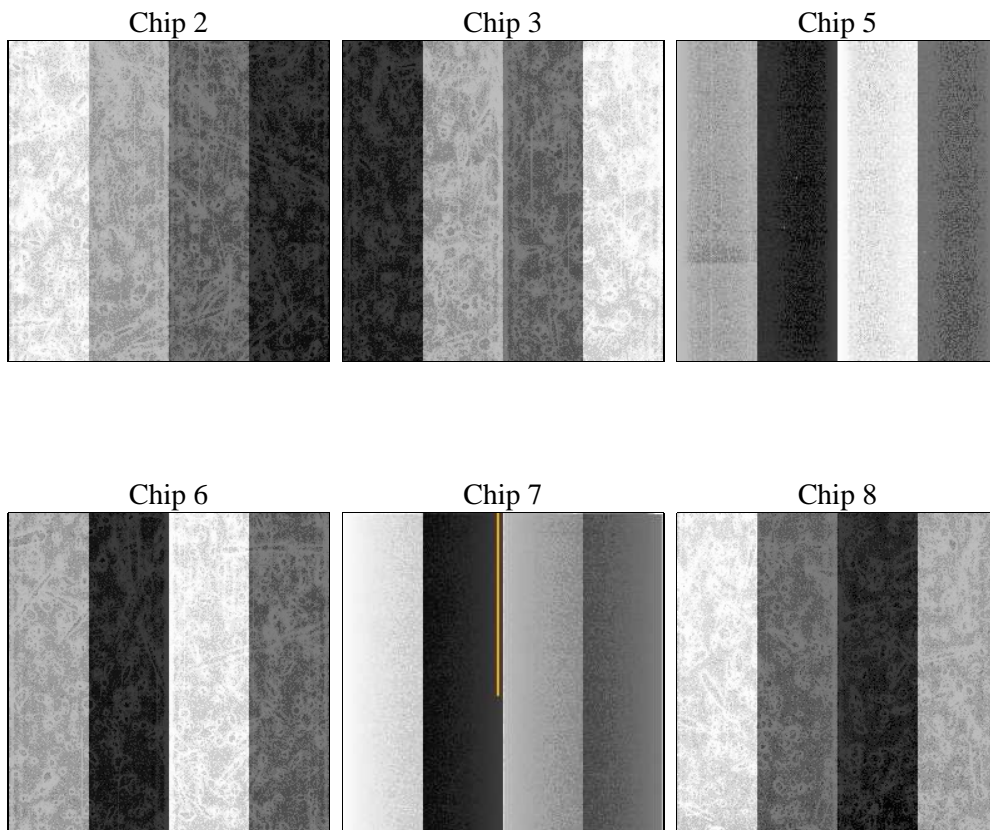
2 OBI

2.1 OBI

2.1.1 Images



2.1.2 Bias



2.1.3 Parameters

obi_num	2	Obi number	sched_exp_time	37000.000000	[s] Scheduled observation exposure time
ascdsver	8.4.5	Processing system revision	ontime	36959.529936135	Sum of GTIs [s]
caldbver	4.5.2	 	ontime2	36949.848085374	Sum of GTIs [s]
date	2012-10-15T13:33:14	Date and time of file creation	ontime3	36956.165845871	Sum of GTIs [s]
revision	3	Processing version of data	ontime5	36959.488896132	Sum of GTIs [s]
			ontime6	36952.965895653	Sum of GTIs [s]
			ontime7	36959.529936135	Sum of GTIs [s]
			ontime8	36956.12478596	Sum of GTIs [s]
			l1events	796744	Number of level 1 events

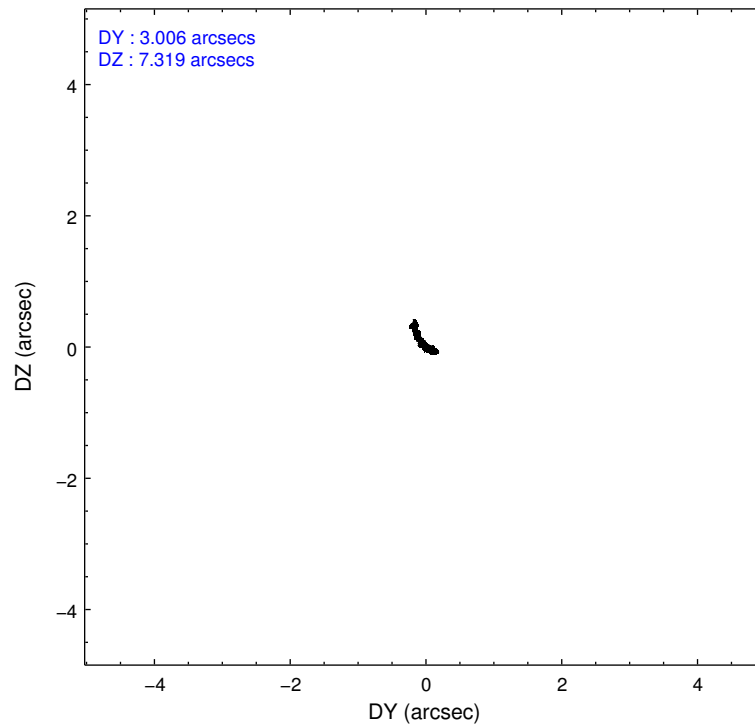
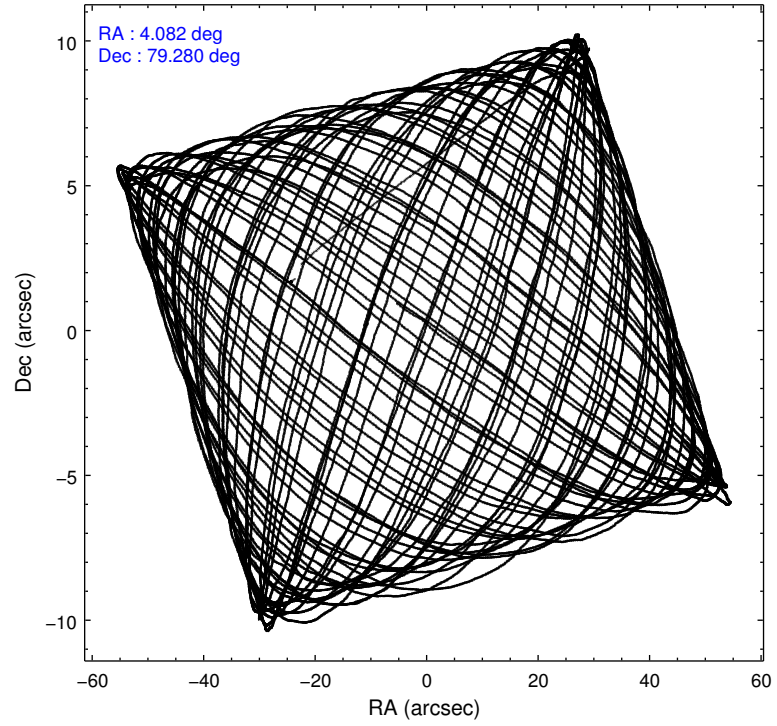
2.1.4 Events

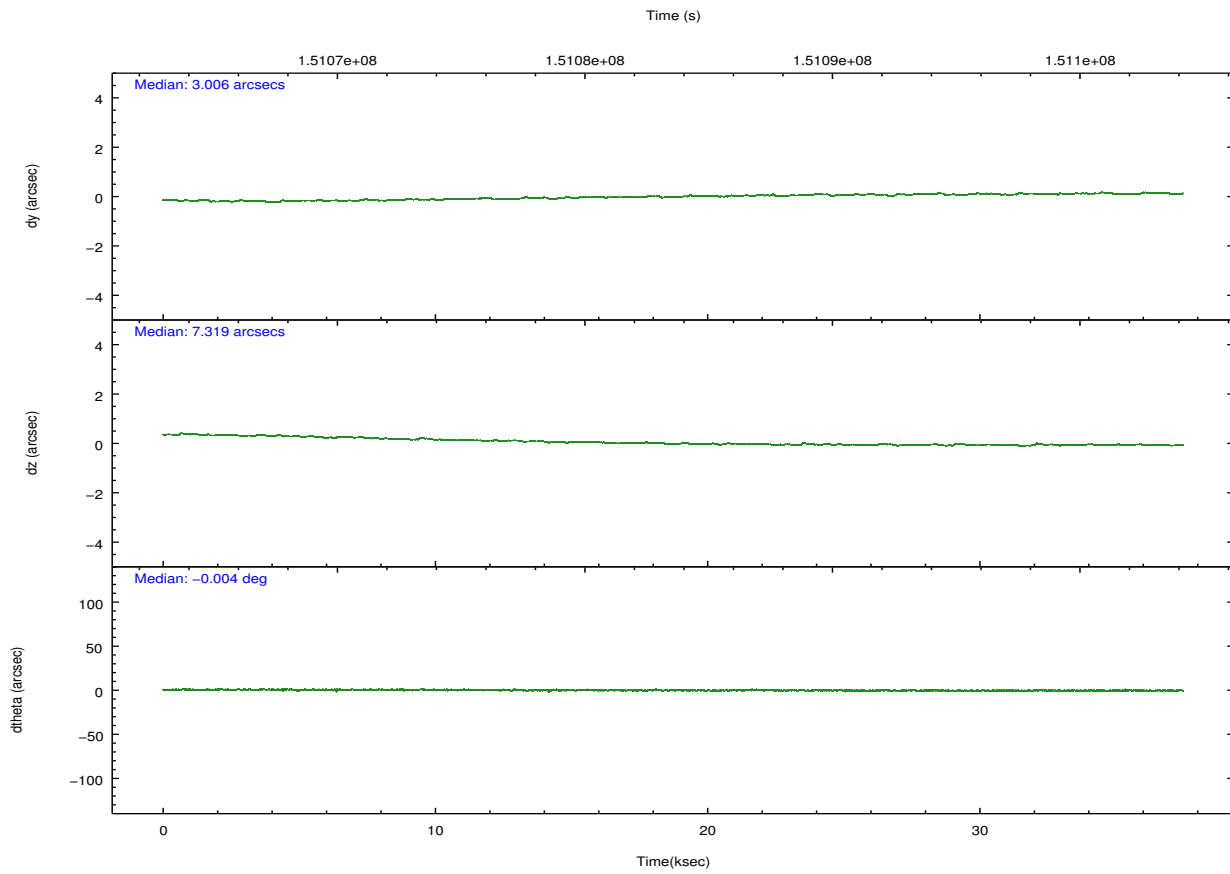
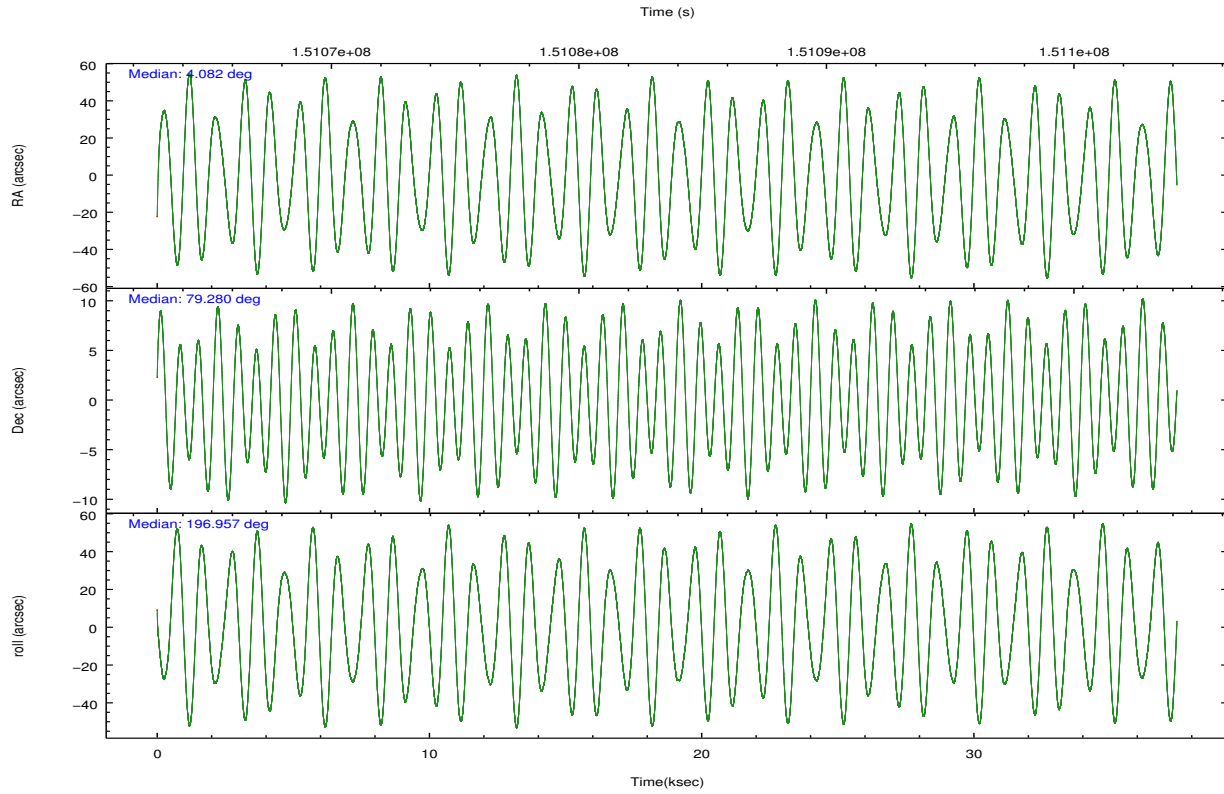
	ccd 2	ccd 3	ccd 5	ccd 6	ccd 7	ccd 8		ccd 2	ccd 3	ccd 5	ccd 6	ccd 7	ccd 8
level 1 events	182098	161387	62663	160448	41438	188710	grade 0 events	4541	4527	4899	5247	5025	10454
rejected events	170885	151198	22574	148792	14103	146547		2%	2%	7%	3%	12%	5%
rejected %	93%	93%	36%	92%	34%	77%	grade 1 events	58	63	165	60	122	126
								0%	0%	0%	0%	0%	0%
							grade 2 events	2662	1878	13344	2269	6698	9653
								1%	1%	21%	1%	16%	5%
							grade 3 events	1343	1339	2547	1391	3025	5315
								0%	0%	4%	0%	7%	2%
							grade 4 events	1365	1242	2430	1360	2881	4833
								0%	0%	3%	0%	6%	2%
							grade 5 events	1145	1311	5459	1237	3763	2580
								0%	0%	8%	0%	9%	1%
							grade 6 events	1302	1204	16871	1391	9708	11910
								0%	0%	26%	0%	23%	6%
							grade 7 events	169682	149823	16948	147493	10216	143839
								93%	92%	27%	91%	24%	76%

2.2 Compared Parameters

Parameter	Planned	Actual	Parameter	Planned	Actual
Instrument	ACIS	ACIS	Obspar format version number	7	7
Detector	ACIS-235678	ACIS-235678	Obspar file type	PREDICTED	ACTUAL
Grating	NONE	NONE	Obspar update status	NONE	UPDATED
Data mode	VFAINT	VFAINT	Number of optional ACIS chips dropped	0	0
Observation mode	POINTING	POINTING	On-chip summing requested	N	N
[deg] Pointing RA	4.178654	4.080067635974004	Subarray requested	NONE	NONE
[deg] Pointing Dec	79.300079	79.27996803452643	Alternating exposures requested	N	N
[deg] Pointing Roll	196.710812	196.9643044679772	[s] Primary exposure time	0.000000	3.2
[mm] SIM focus pos	-0.684267	-0.6828225247311905			
[mm] SIM defocus	0	0.001444936568705701			
[mm] SIM translation stage pos	-190.132523	-190.1400660498719			
[mm] SIM translation stage offset	0	0.00754346686406393			
[s] Observation start time (MET)	151065288.184000	151064195.46316			
Observation start date	2002-10-15T10:33:44	2002-10-15T10:16:35			
[s] Observation end time (MET)	151102288.184000	151103250.01478			
Observation end date	2002-10-15T20:50:24	2002-10-15T21:07:30			
Read mode	TIMED	TIMED			

2.3 Aspect



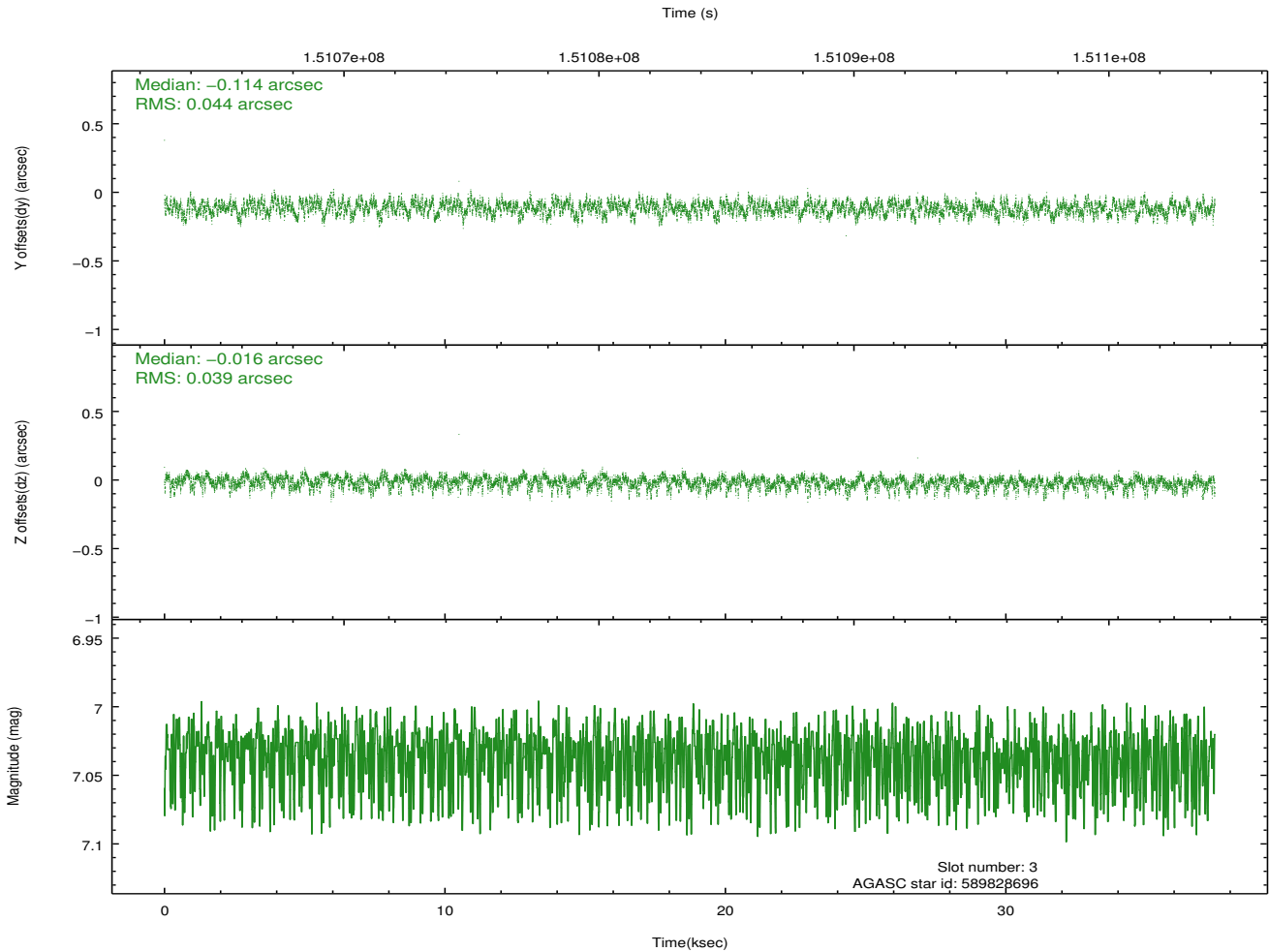
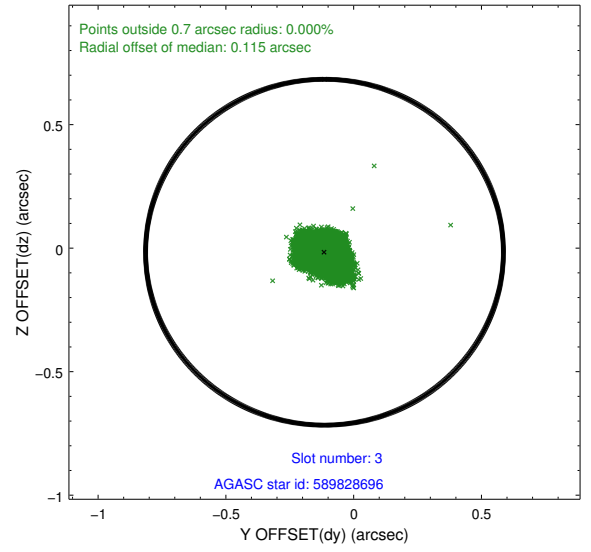
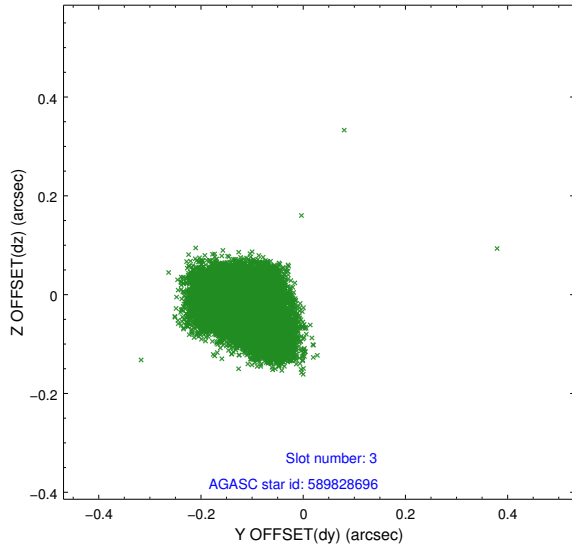


Slot Statistics

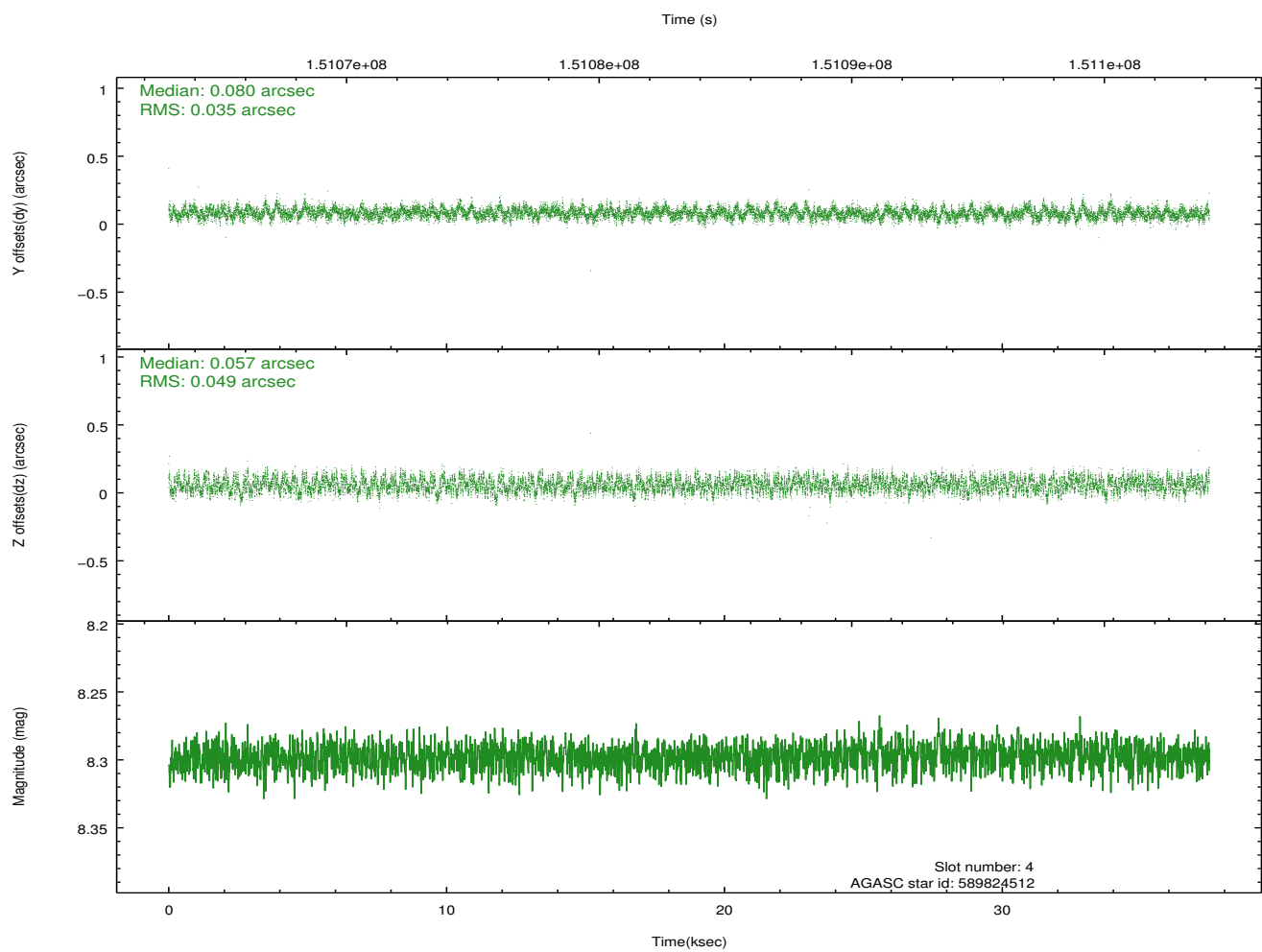
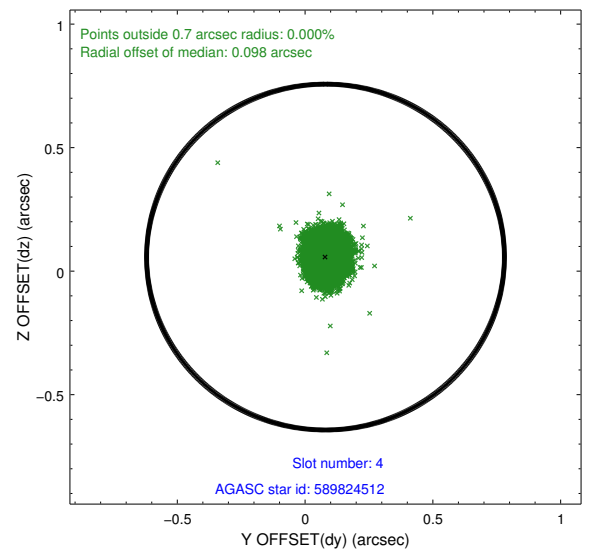
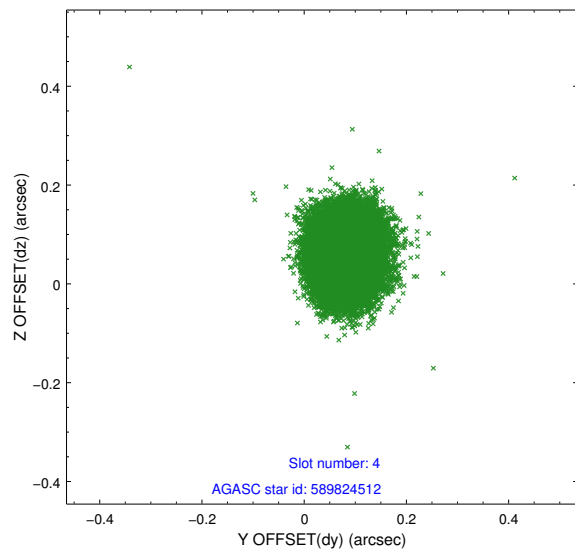
slot	status	id	mag	n_pts	med_dy	med_dz	dr1	dr2	ra	dec	mean_y	mean_z
0	FID	ACIS-S-2	7.11	9137	-0.015	-0.006	0.007	0.011	0.000000	0.000000	-755.65	-1728.56
1	FID	ACIS-S-4	7.20	9134	-0.001	0.009	0.008	0.015	0.000000	0.000000	2157.63	179.90
2	FID	ACIS-S-5	7.24	9137	-0.014	0.005	0.008	0.013	0.000000	0.000000	-1808.45	173.61
3	GUIDE	589828696	7.04	18272	-0.114	-0.016	0.062	0.104	6.780769	80.052144	-2336.95	-2162.87
4	GUIDE	589824512	8.30	18270	0.080	0.057	0.065	0.101	6.067443	79.539008	-1433.81	-488.36
5	GUIDE	589837624	8.95	18263	-0.046	-0.007	0.089	0.148	1.382205	78.951069	2196.40	604.67
6	GUIDE	589839880	9.48	18263	0.072	-0.219	0.106	0.178	6.289102	78.845431	-943.05	1964.40
7	GUIDE	589839280	9.50	18263	0.009	0.186	0.084	0.137	3.312466	78.885293	1005.08	1253.40

2.4 Star Slots

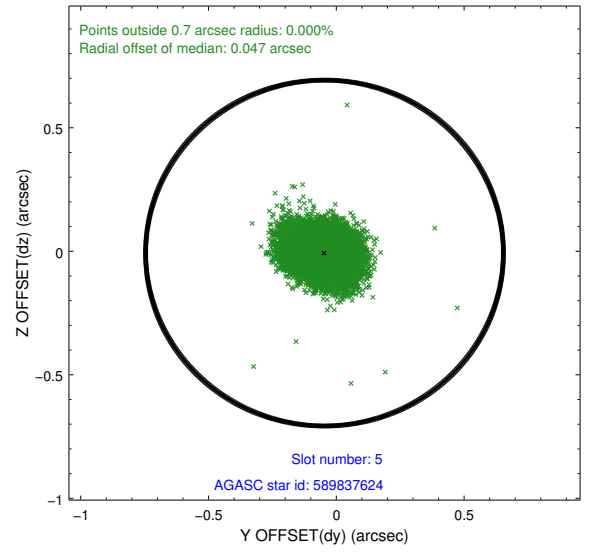
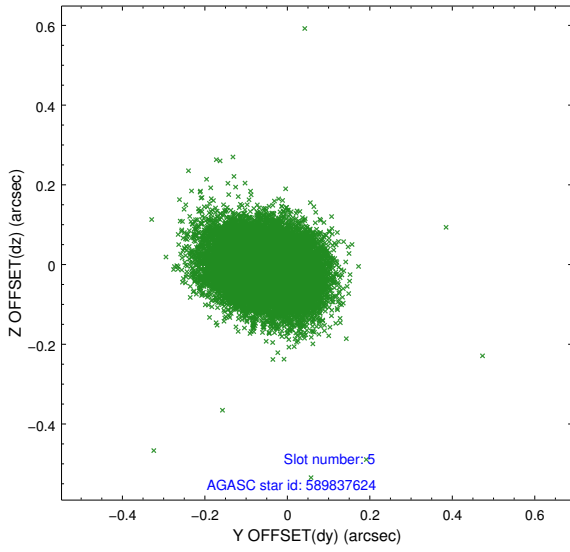
2.4.1 Slot 3



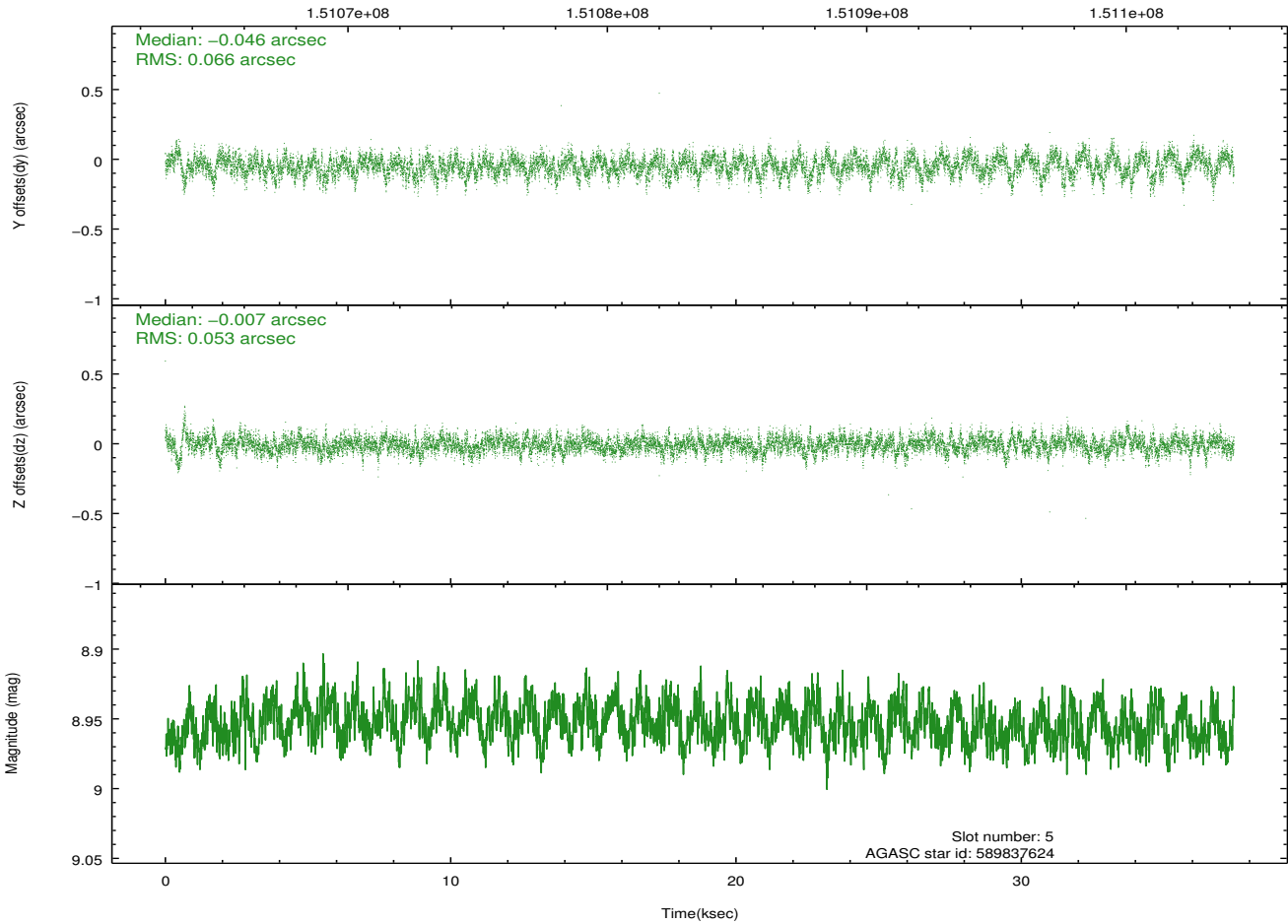
2.4.2 Slot 4



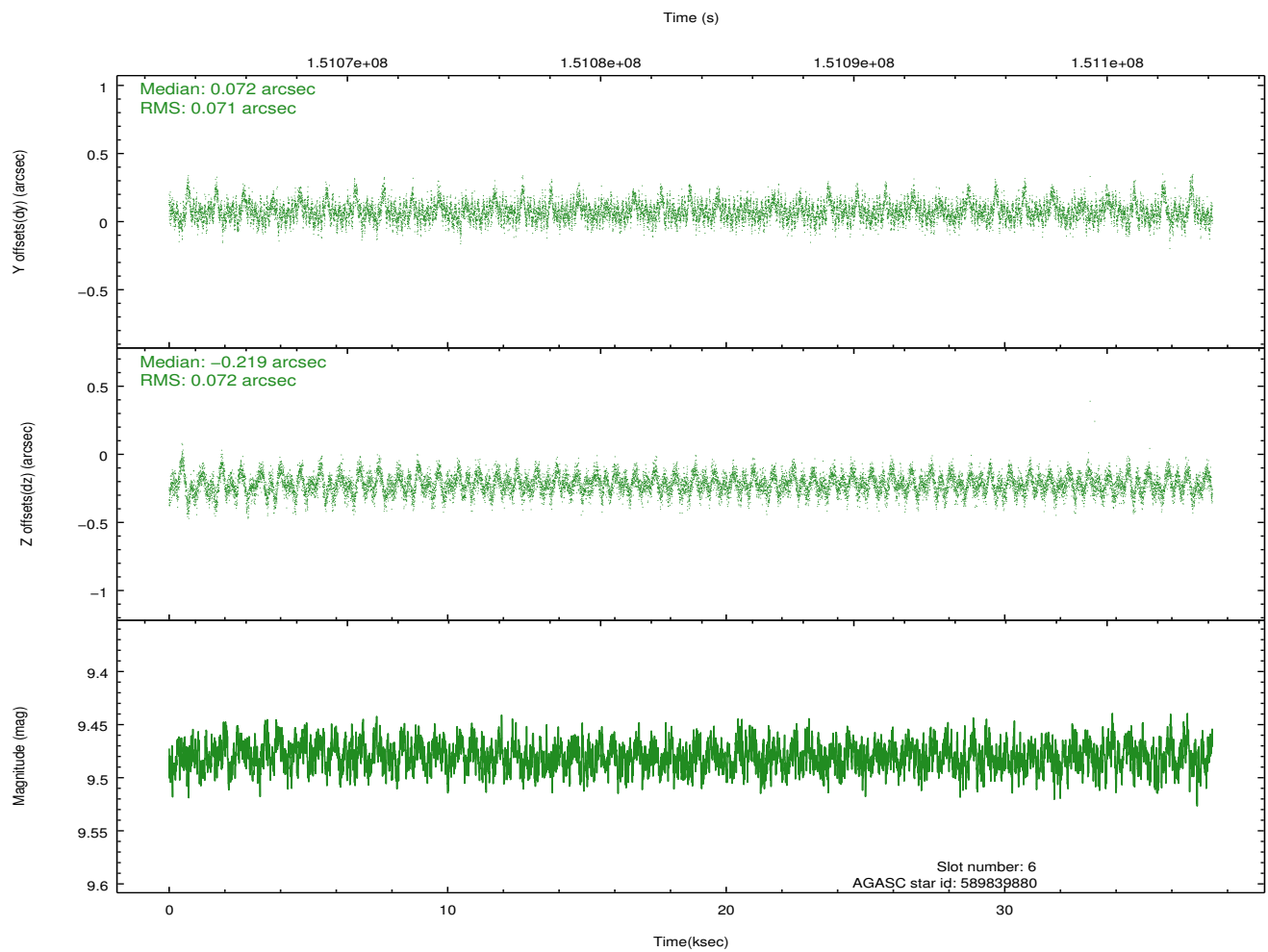
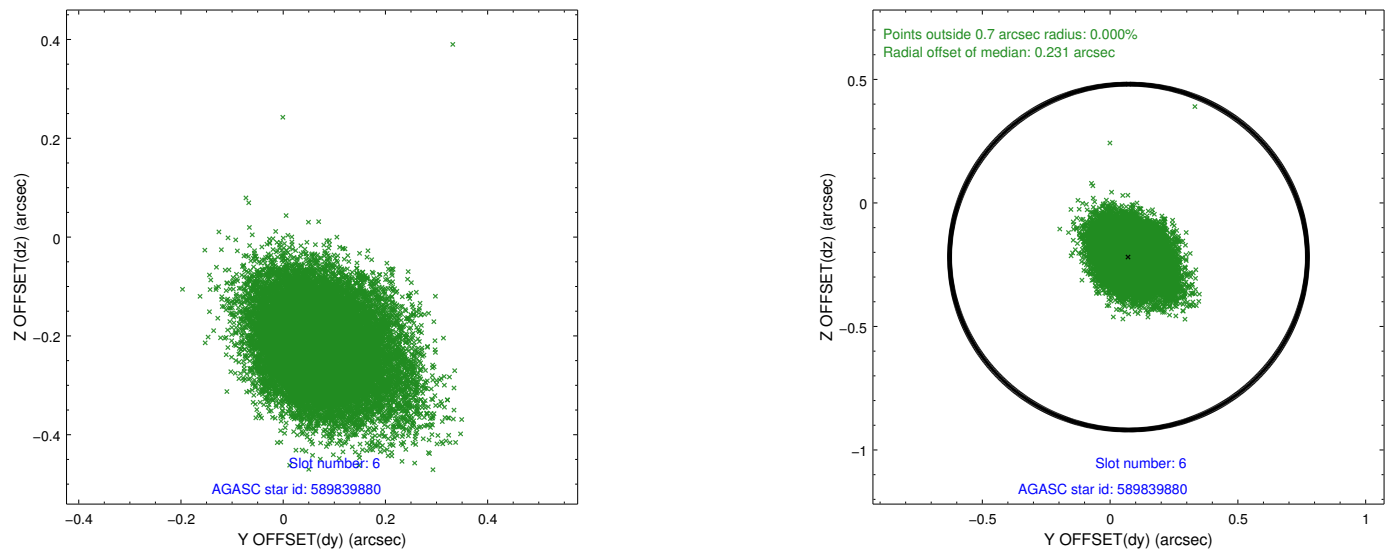
2.4.3 Slot 5



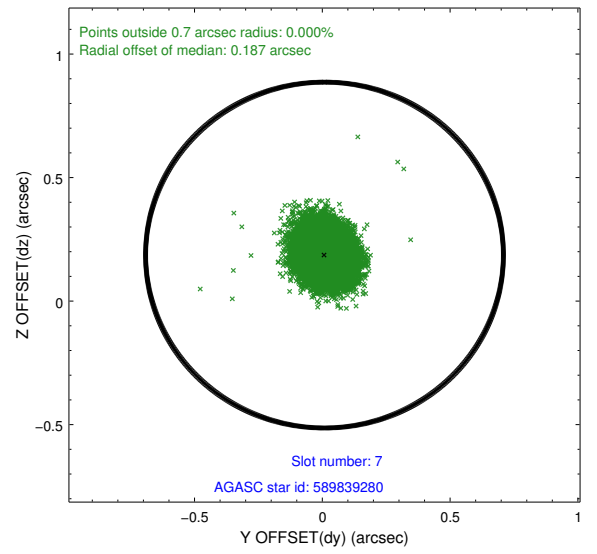
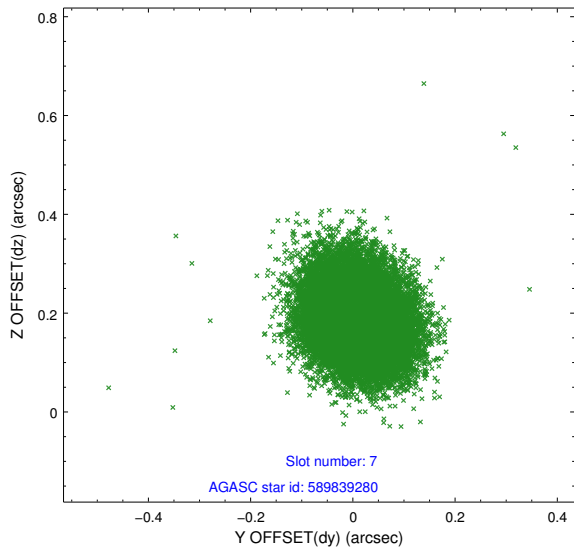
Time (s)



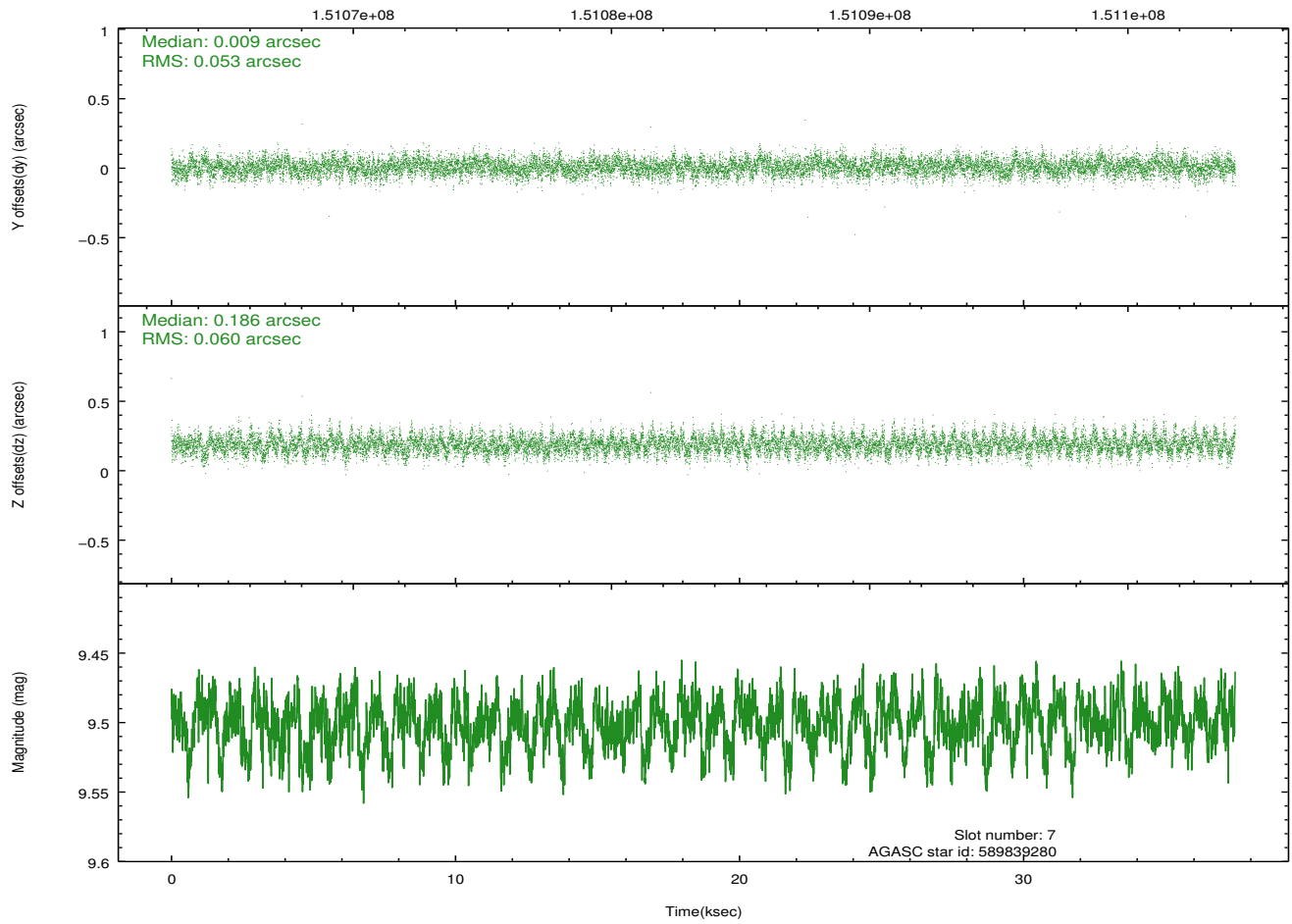
2.4.4 Slot 6



2.4.5 Slot 7

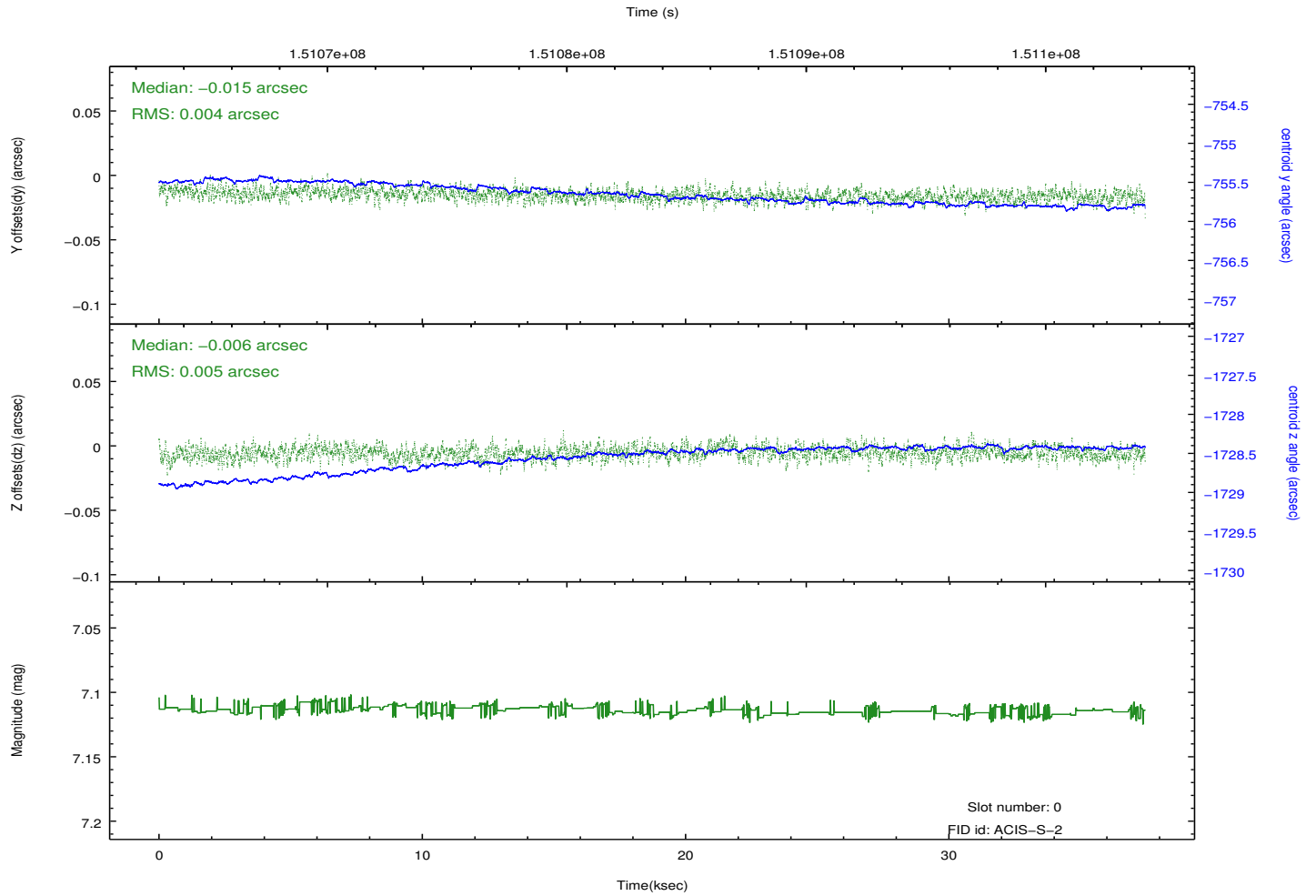
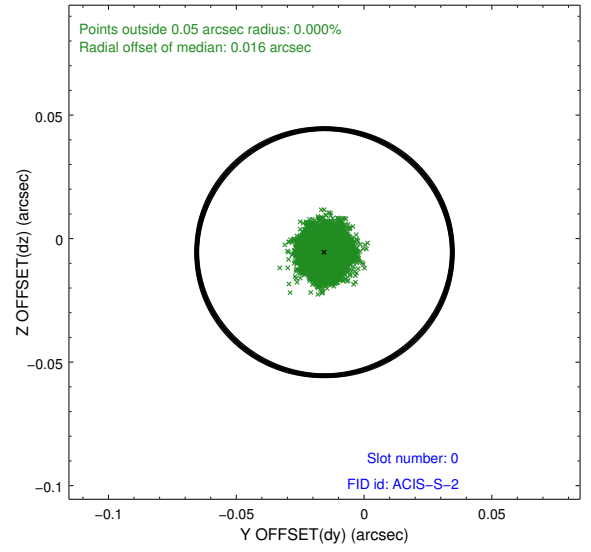
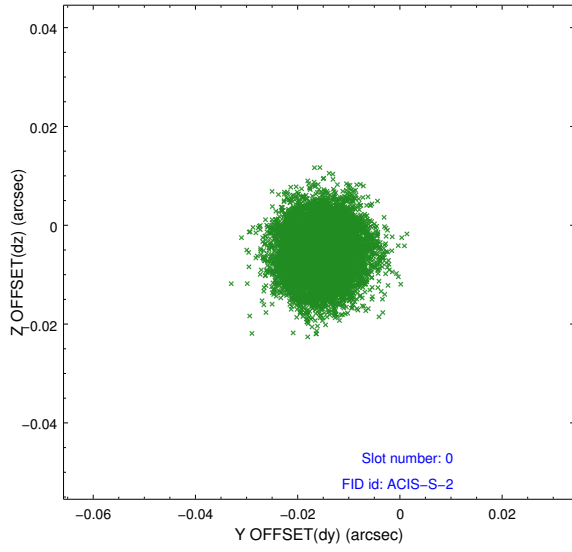


Time (s)

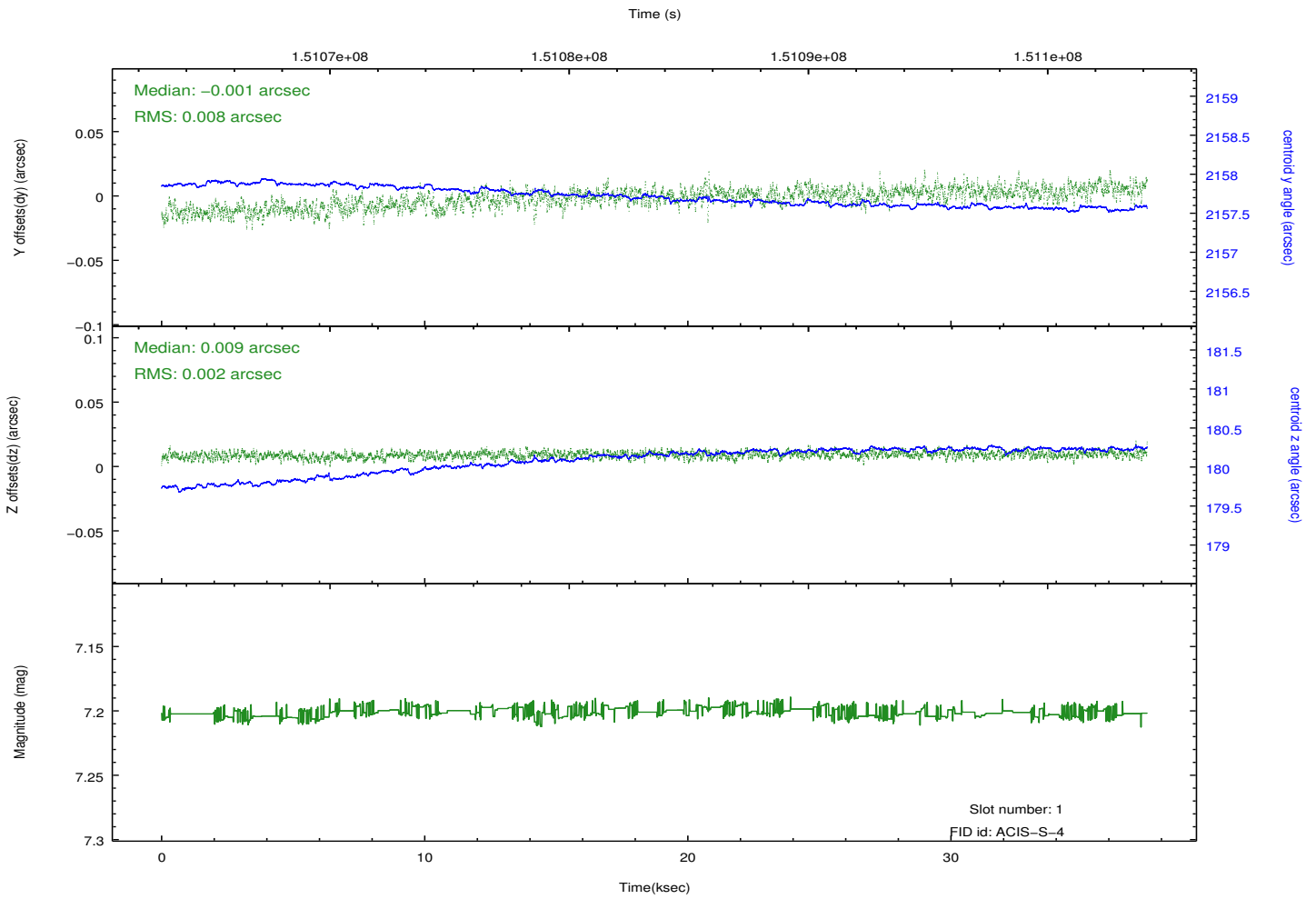
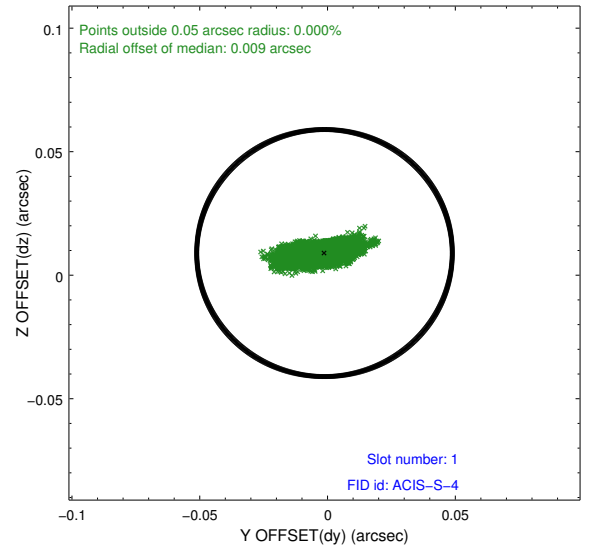
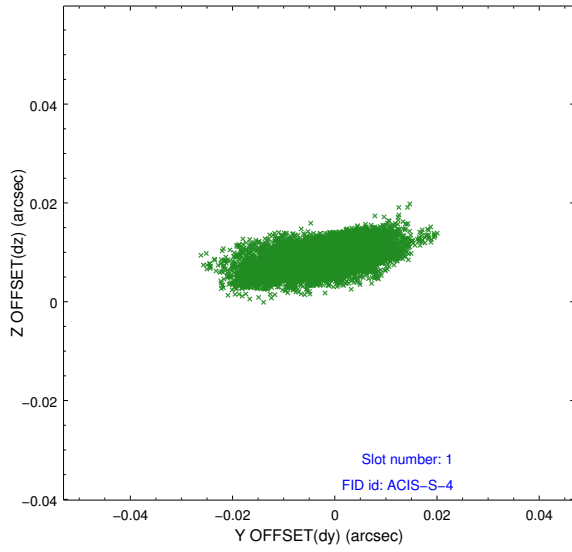


2.5 FID Slots

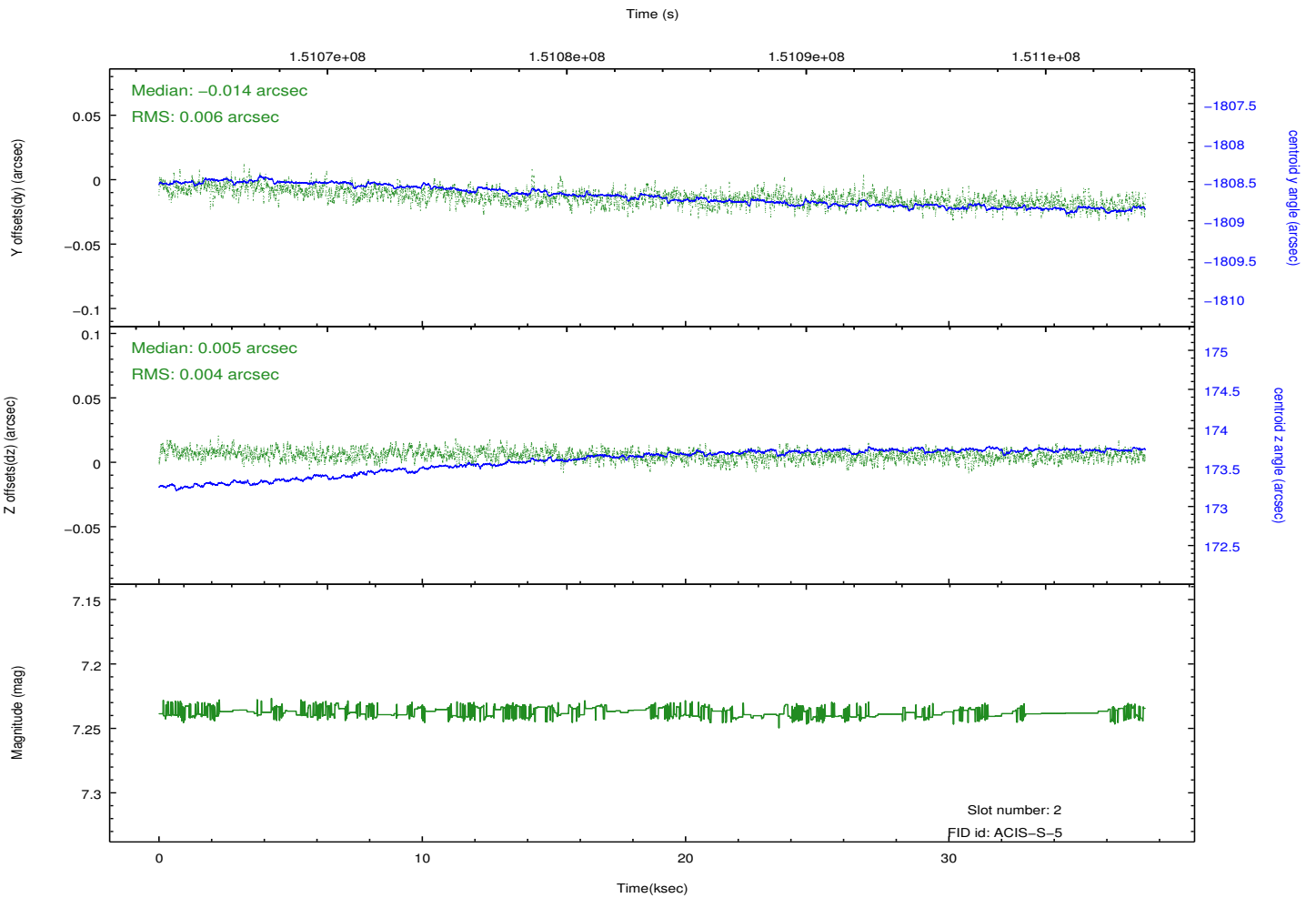
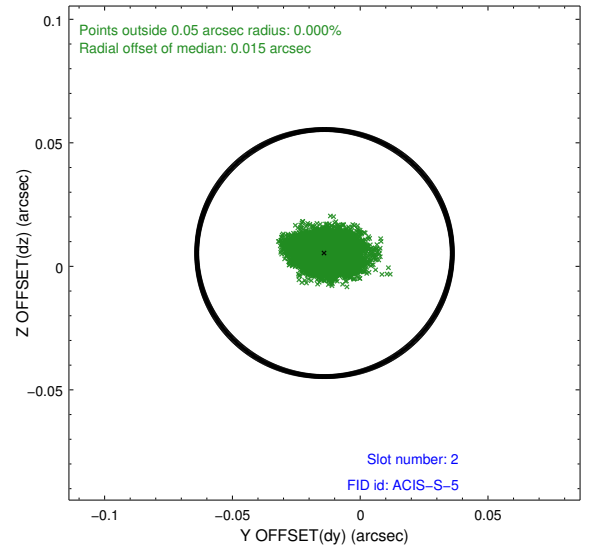
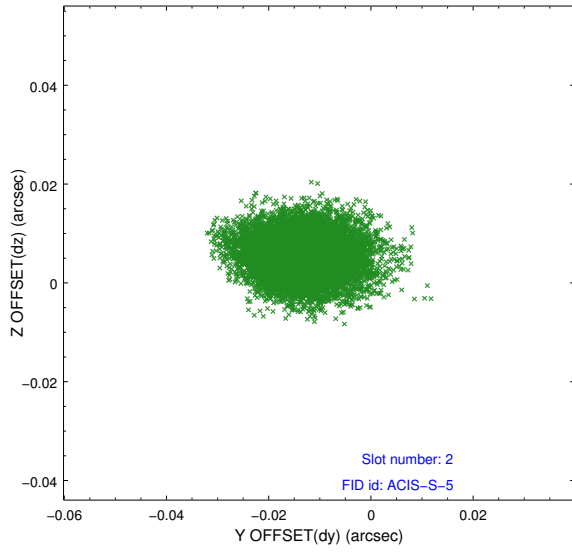
2.5.1 Slot 0



2.5.2 Slot 1



2.5.3 Slot 2



A Summary

A.1 Status

V&V Scientist	Jen Lauer
V&V Date (YYYY-MM-DD)	2012.10.25
V&V Edition	1
V&V Disposition and Status	OK
V&V Charge Time	36.959

A.2 Comments