

V&V Reference Report

L2 ASCDS Version : 8.4.5

Observation 3049 - L2 Version 3
Chandra X-Ray Center

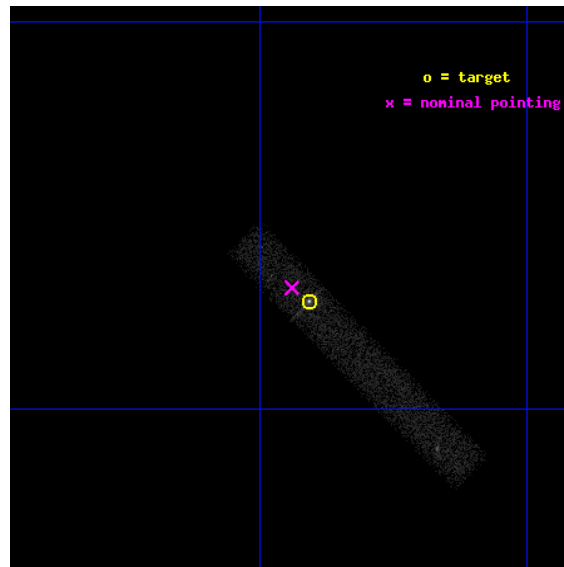
L2 Processing Date : Oct 17 2012

Contents

1	Front	2
2	OBI	3
2.1	OBI	3
2.1.1	Images	3
2.1.2	Bias	3
2.1.3	Parameters	4
2.1.4	Events	4
2.2	Compared Parameters	5
2.3	Aspect	6
2.4	Star Slots	9
2.4.1	Slot 3	9
2.4.2	Slot 4	10
2.4.3	Slot 5	11
2.4.4	Slot 6	12
2.4.5	Slot 7	13
2.5	FID Slots	14
2.5.1	Slot 0	14
2.5.2	Slot 1	15
2.5.3	Slot 2	16
A	Summary	17
A.1	Status	17
A.2	Comments	17

1 Front

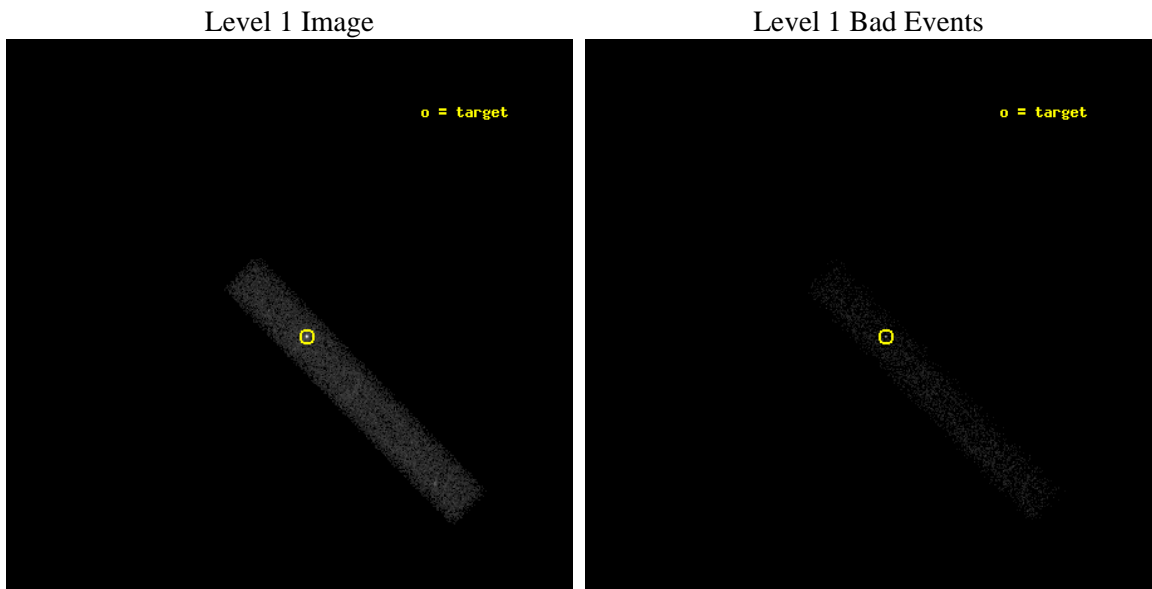
seq_num	700488	Sequence number
obs_id	3049	Observation id
title	X-RAY IMAGING OF QUASAR JETS	Proposal title
observer	Professor Alan Marscher	Principal investigator
object	1222+216	Source name
dtcycle	0	
cycle	P	events from which exps? Prim/Second/Both
ra_targ	186.226667	Observer's specified target RA [deg]
dec_targ	21.37975	Observer's specified target Dec [deg]
ra_nom	186.23517166237	Nominal RA [deg]
dec_nom	21.385372813481	Nominal Dec [deg]
roll_nom	45.570026079596	Nominal Roll [deg]
revision	3	Processing version of data
ontime	19709.159253627	Sum of GTIs [s]
livetime	17875.167108314	Livetime [s]
ontime7	19709.159253627	Sum of GTIs [s]
l2events	18387	Number of level 2 events



2 OBI

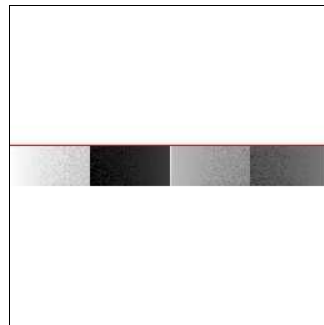
2.1 OBI

2.1.1 Images



2.1.2 Bias

Chip 7



2.1.3 Parameters

obi_num	0	Obi number	sched_exp_time	19300.000000	[s] Scheduled observation exposure time
ascdsver	8.4.5	Processing system revision	ontime	19709.159253627	Sum of GTIs [s]
caldbver	4.5.2	 	ontime7	19709.159253627	Sum of GTIs [s]
date	2012-10-17T11:07:40	Date and time of file creation	l1events	30828	Number of level 1 events
revision	3	Processing version of data			

2.1.4 Events

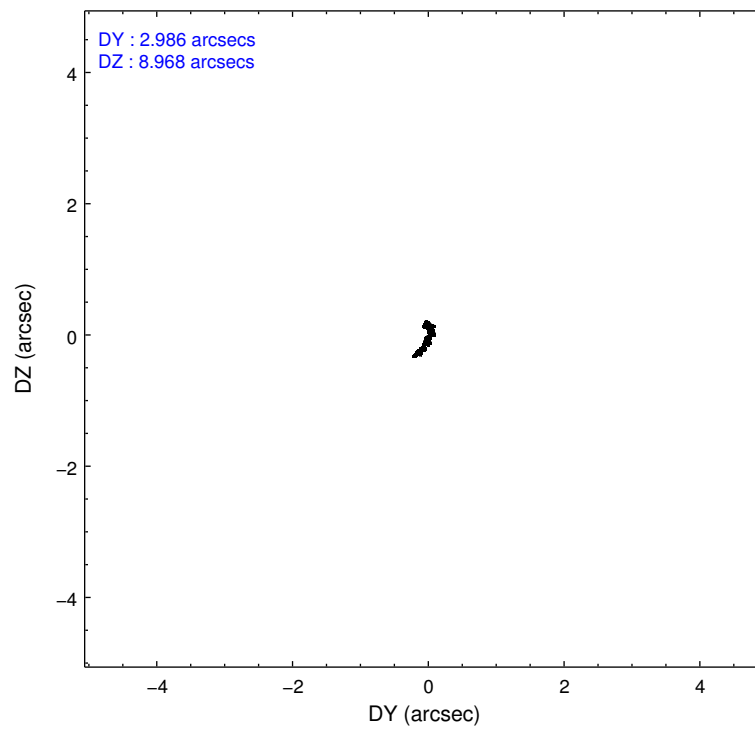
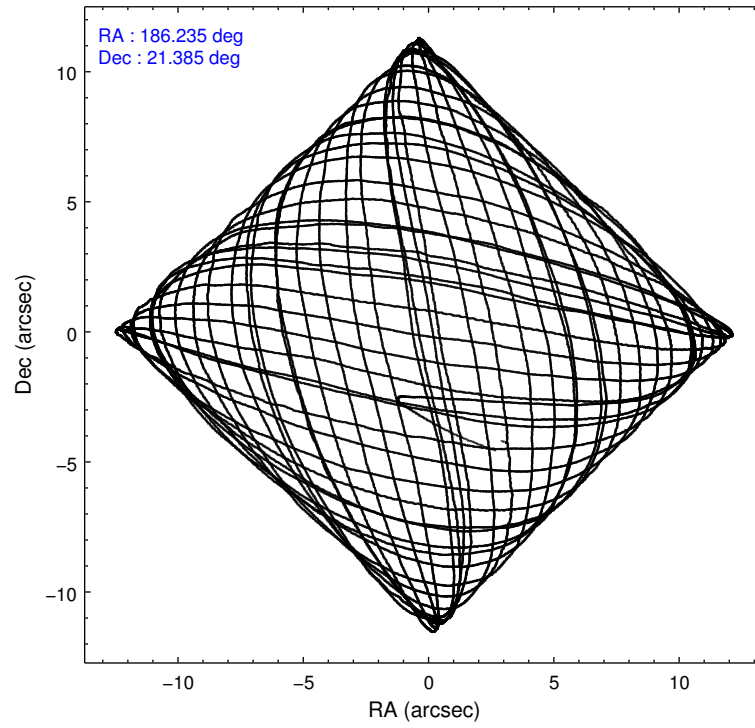
	ccd 7
level 1 events	30828
rejected events	12070
rejected %	39%

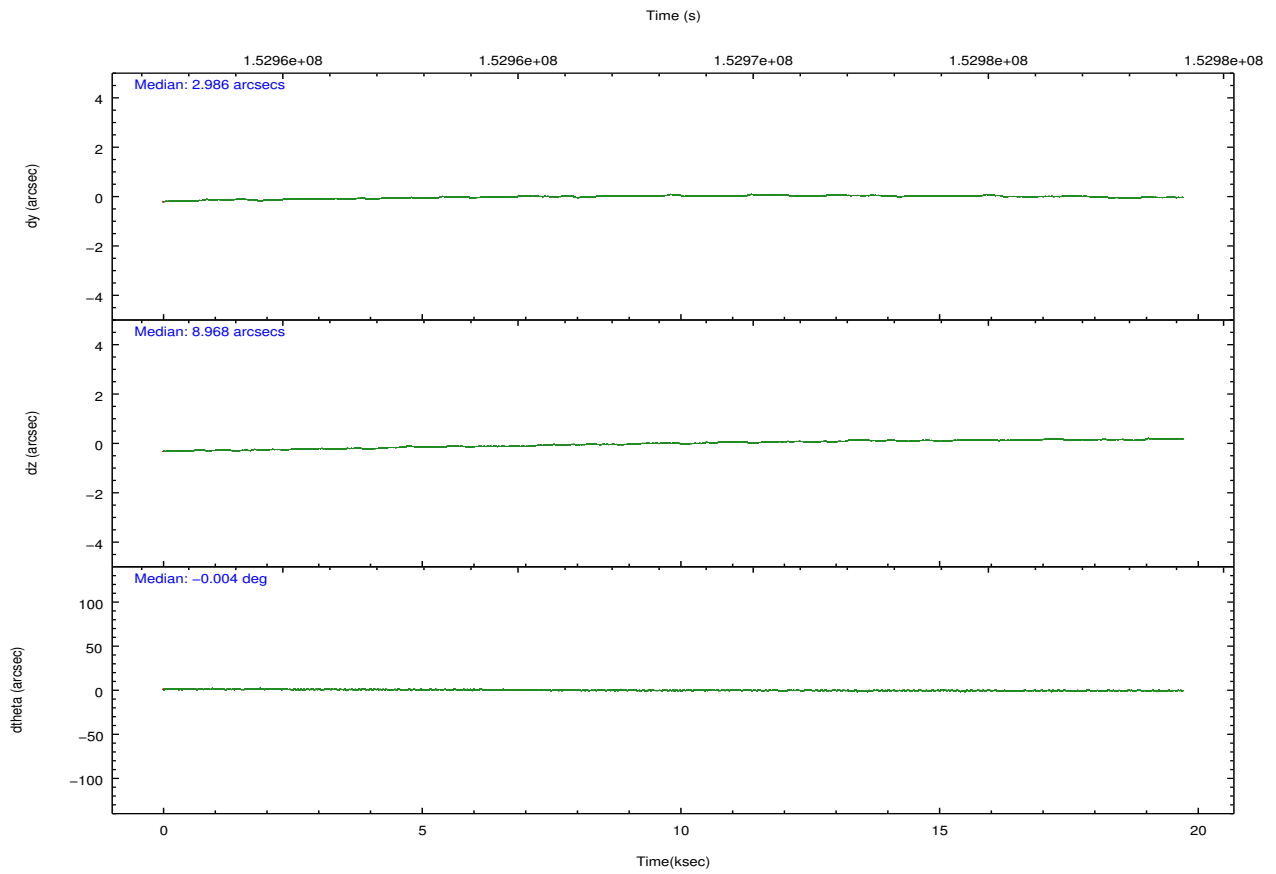
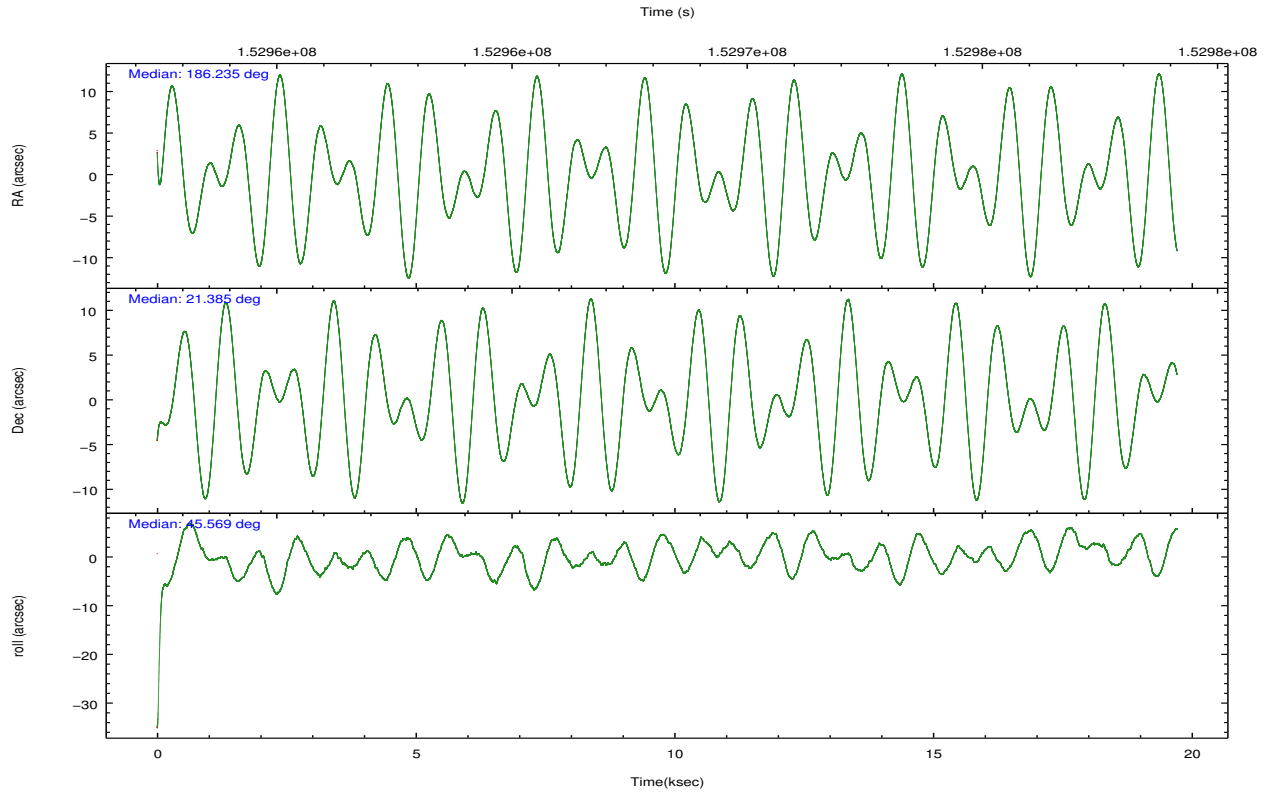
	ccd 7
grade 0 events	4076
	13%
grade 1 events	78
	0%
grade 2 events	4164
	13%
grade 3 events	2395
	7%
grade 4 events	2246
	7%
grade 5 events	2151
	6%
grade 6 events	6164
	19%
grade 7 events	9554
	30%

2.2 Compared Parameters

Parameter	Planned	Actual	Parameter	Planned	Actual
Instrument	ACIS	ACIS	Obspar format version number	7	7
Detector	ACIS-7	ACIS-7	Obspar file type	PREDICTED	ACTUAL
Grating	NONE	NONE	Obspar update status	NONE	UPDATED
Data mode	FAINT	FAINT	Number of optional ACIS chips dropped	0	0
Observation mode	POINTING	POINTING	On-chip summing requested	N	N
[deg] Pointing RA	186.228218	186.2351716623712	Subarray requested	CUSTOM	1/8
[deg] Pointing Dec	21.358897	21.38537281348148	Subarray start row	449	449
[deg] Pointing Roll	45.415955	45.57002607959648	Subarray row count	128	128
[mm] SIM focus pos	-0.684267	-0.6828225247311905	Alternating exposures requested	N	N
[mm] SIM defocus	0	0.001444936568705701	[s] Primary exposure time	0.000000	0.4
[mm] SIM translation stage pos	-190.132523	-190.1425803651734			
[mm] SIM translation stage offset	0	0.01005778216563158			
[s] Observation start time (MET)	152958851.184000	152957769.77932			
Observation start date	2002-11-06T08:33:07	2002-11-06T08:16:09			
[s] Observation end time (MET)	152978151.184000	152978939.6177			
Observation end date	2002-11-06T13:54:47	2002-11-06T14:08:59			
Read mode	TIMED	TIMED			

2.3 Aspect



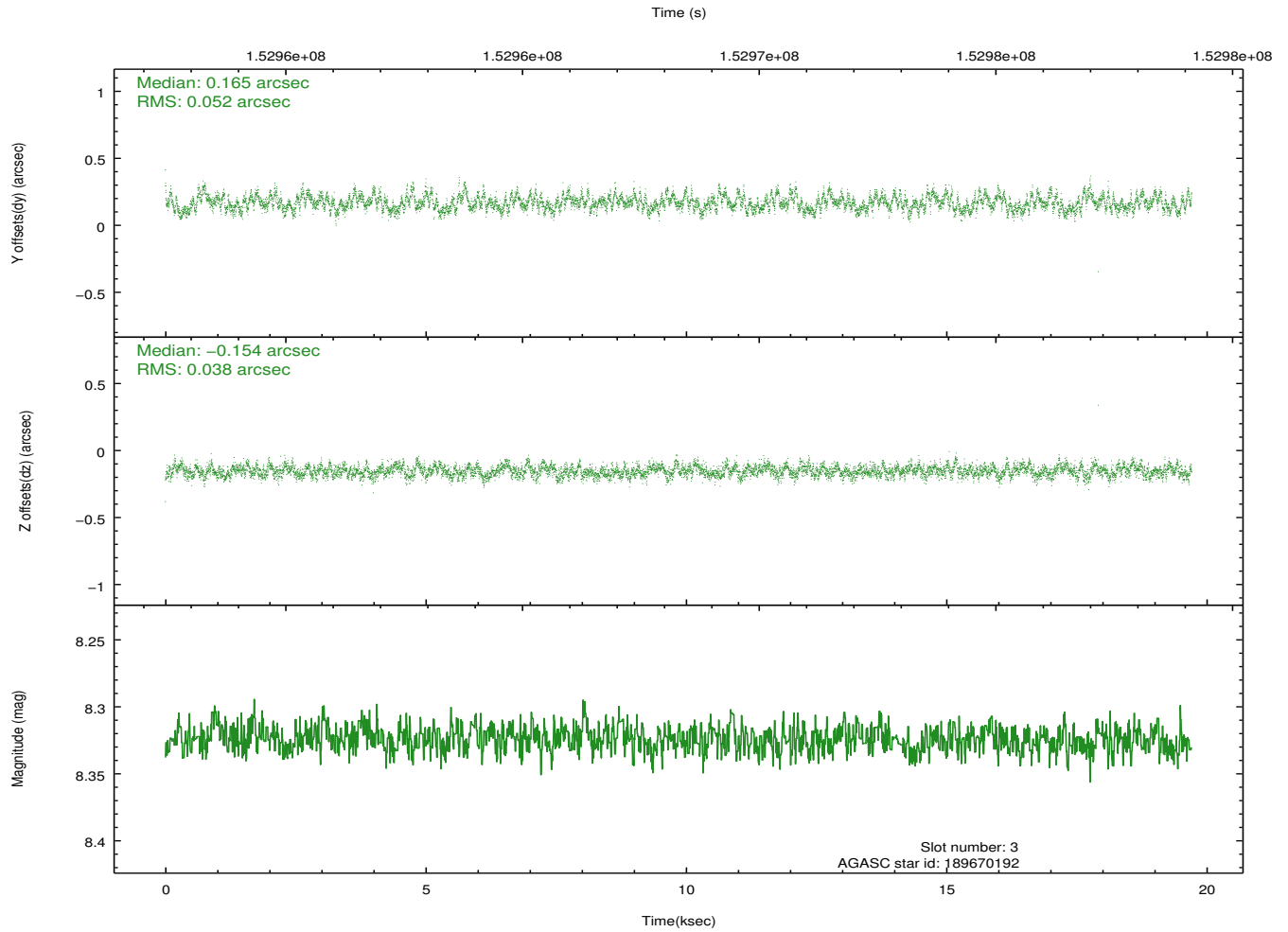
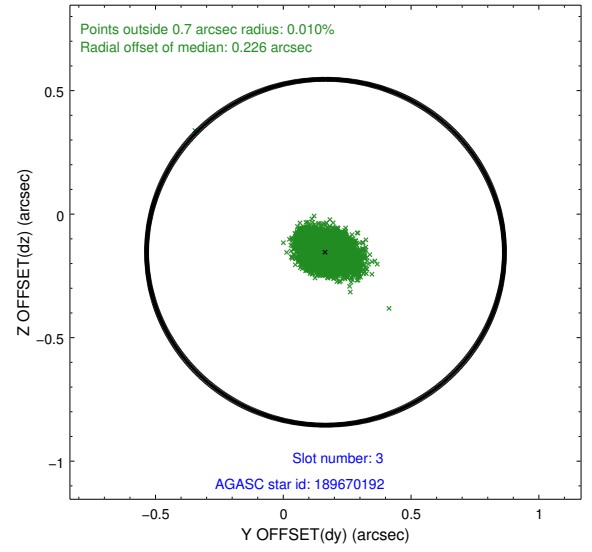
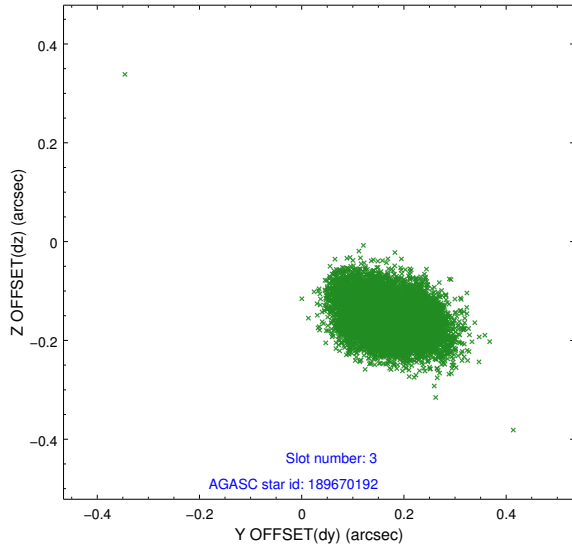


Slot Statistics

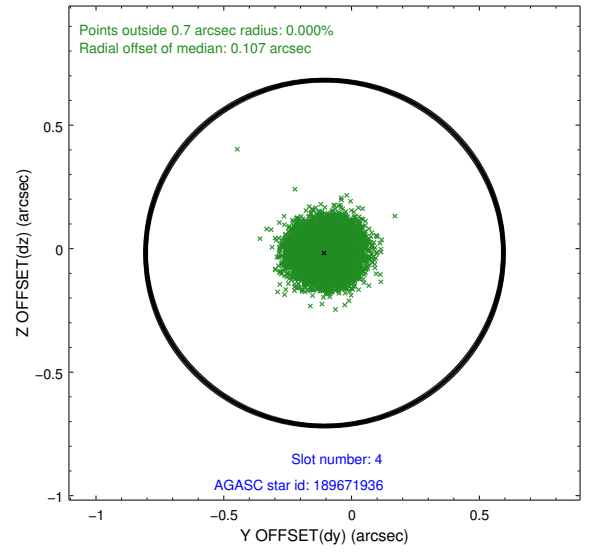
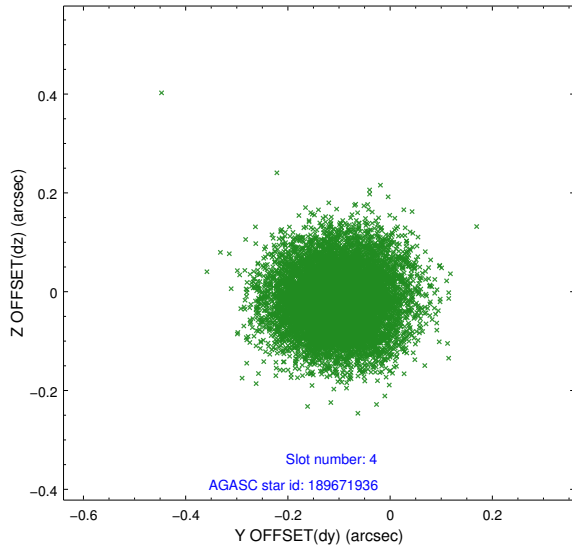
slot	status	id	mag	n_pts	med_dy	med_dz	dr1	dr2	ra	dec	mean_y	mean_z
0	FID	ACIS-S-2	7.10	4807	-0.021	-0.007	0.007	0.012	0.000000	0.000000	-755.62	-1730.12
1	FID	ACIS-S-4	7.20	4807	0.000	0.012	0.007	0.013	0.000000	0.000000	2157.58	178.19
2	FID	ACIS-S-5	7.24	4807	-0.010	0.004	0.007	0.012	0.000000	0.000000	-1808.21	172.07
3	GUIDE	189670192	8.32	9615	0.165	-0.154	0.069	0.113	185.414107	21.302772	-2055.67	1807.15
4	GUIDE	189671936	9.72	9614	-0.106	-0.018	0.094	0.152	186.395770	21.832299	1606.38	797.59
5	GUIDE	189673464	9.00	9616	-0.074	-0.103	0.075	0.120	186.126502	22.164808	1828.30	2278.01
6	GUIDE	189675776	9.57	9600	-0.145	0.407	0.114	0.180	186.784654	20.969099	316.17	-2314.49
7	GUIDE	189672384	9.92	9612	0.158	-0.132	0.135	0.209	185.836405	21.094900	-1599.16	270.74

2.4 Star Slots

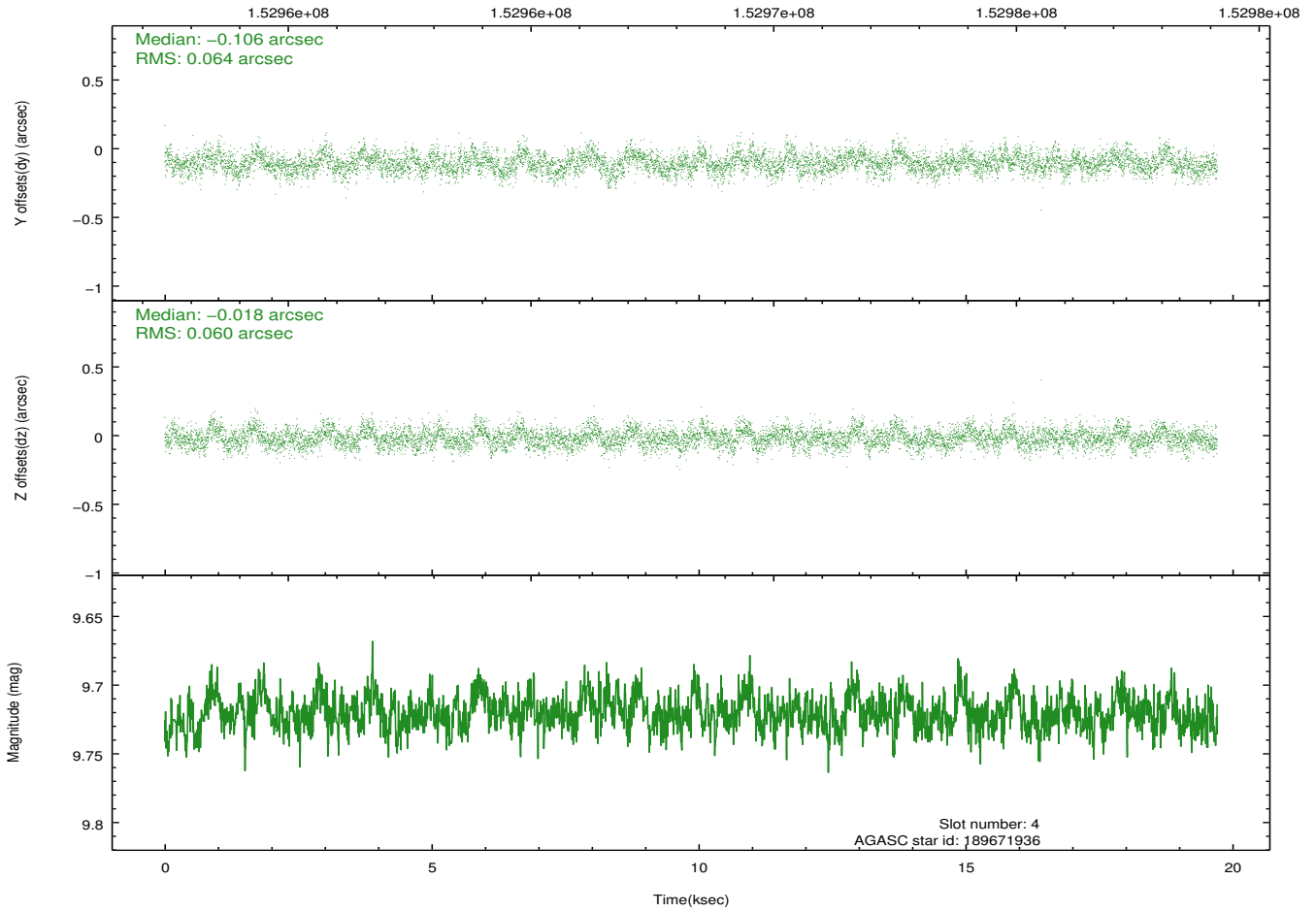
2.4.1 Slot 3



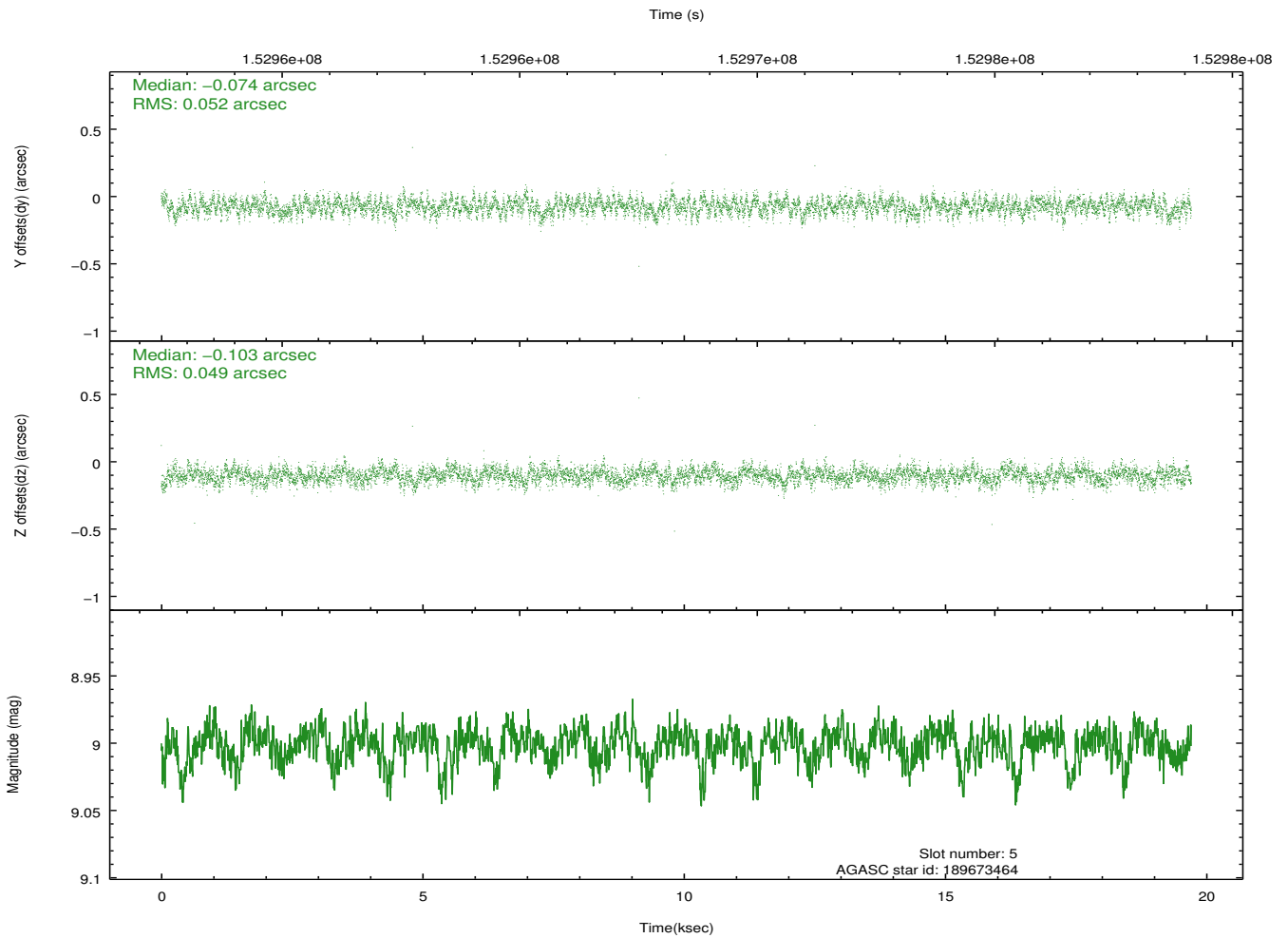
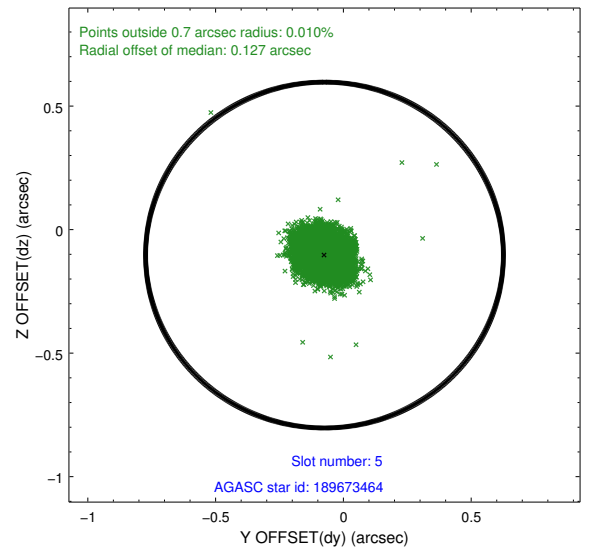
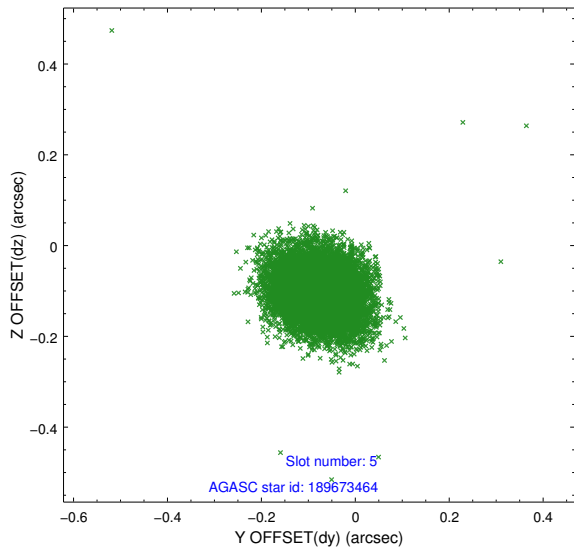
2.4.2 Slot 4



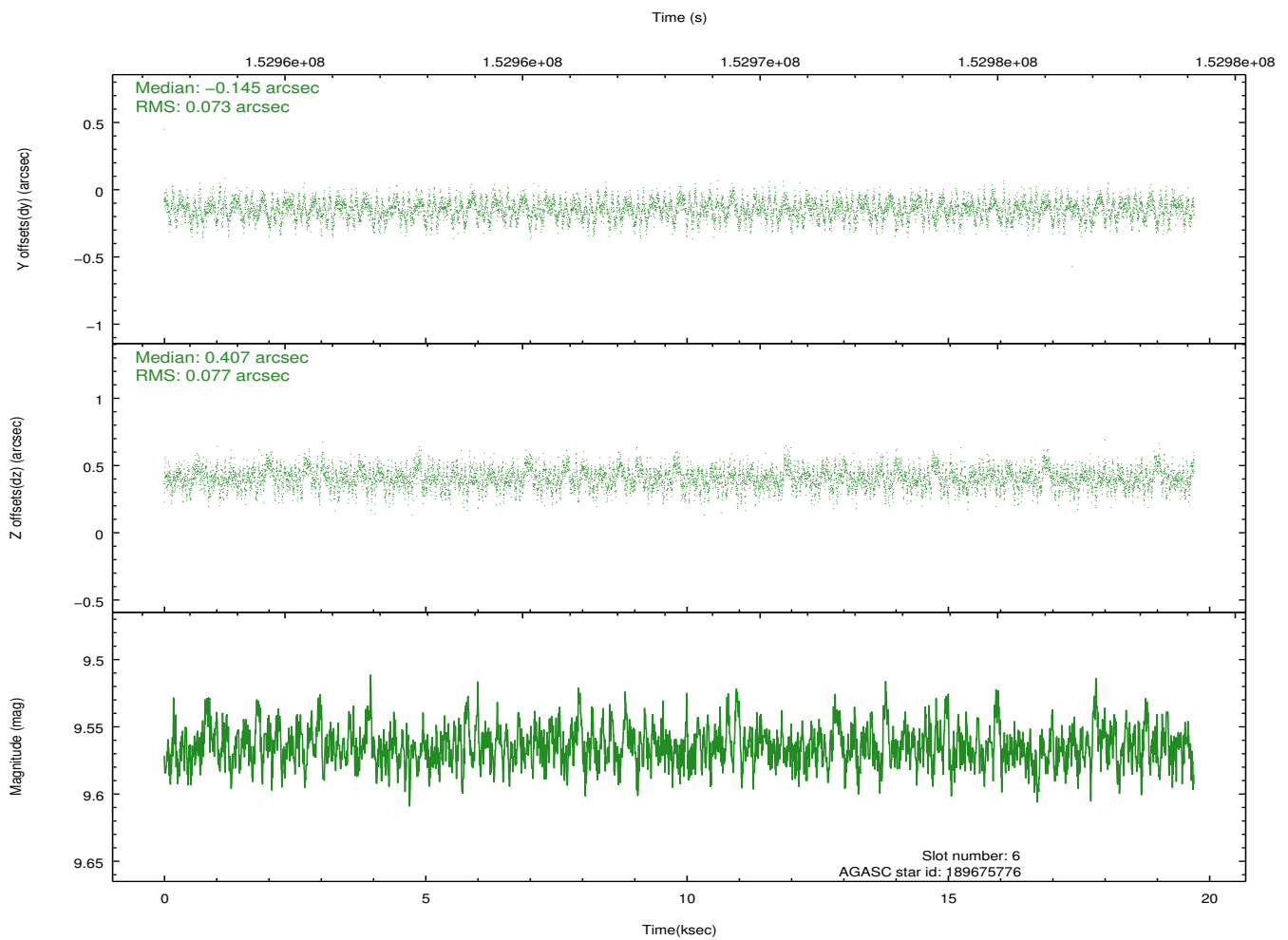
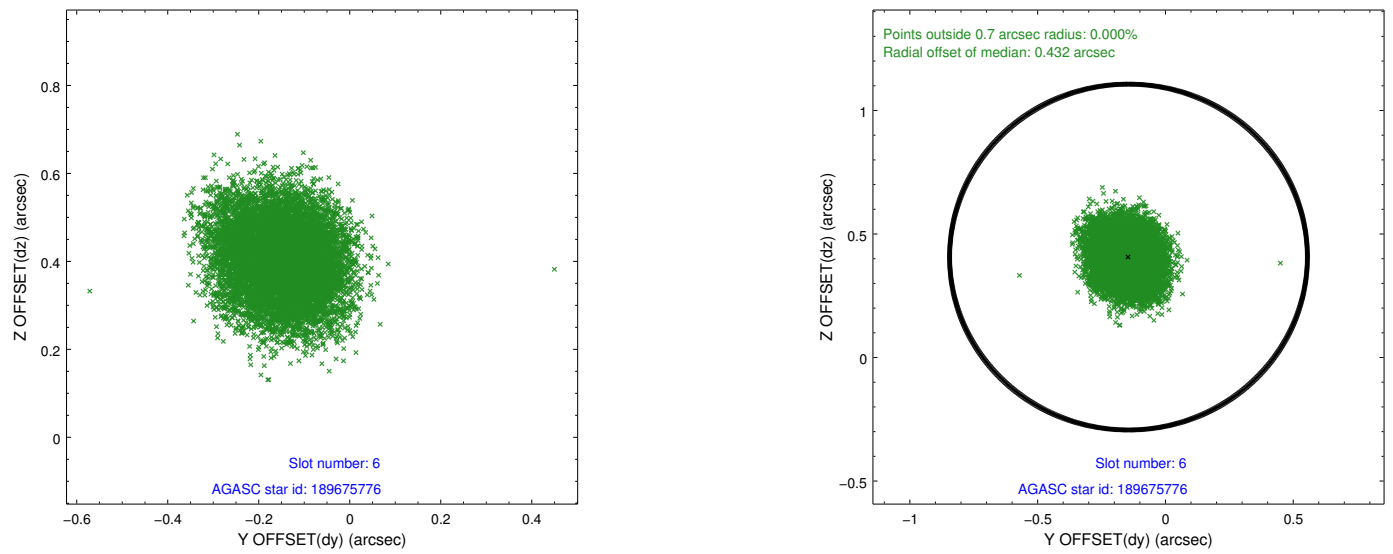
Time (s)



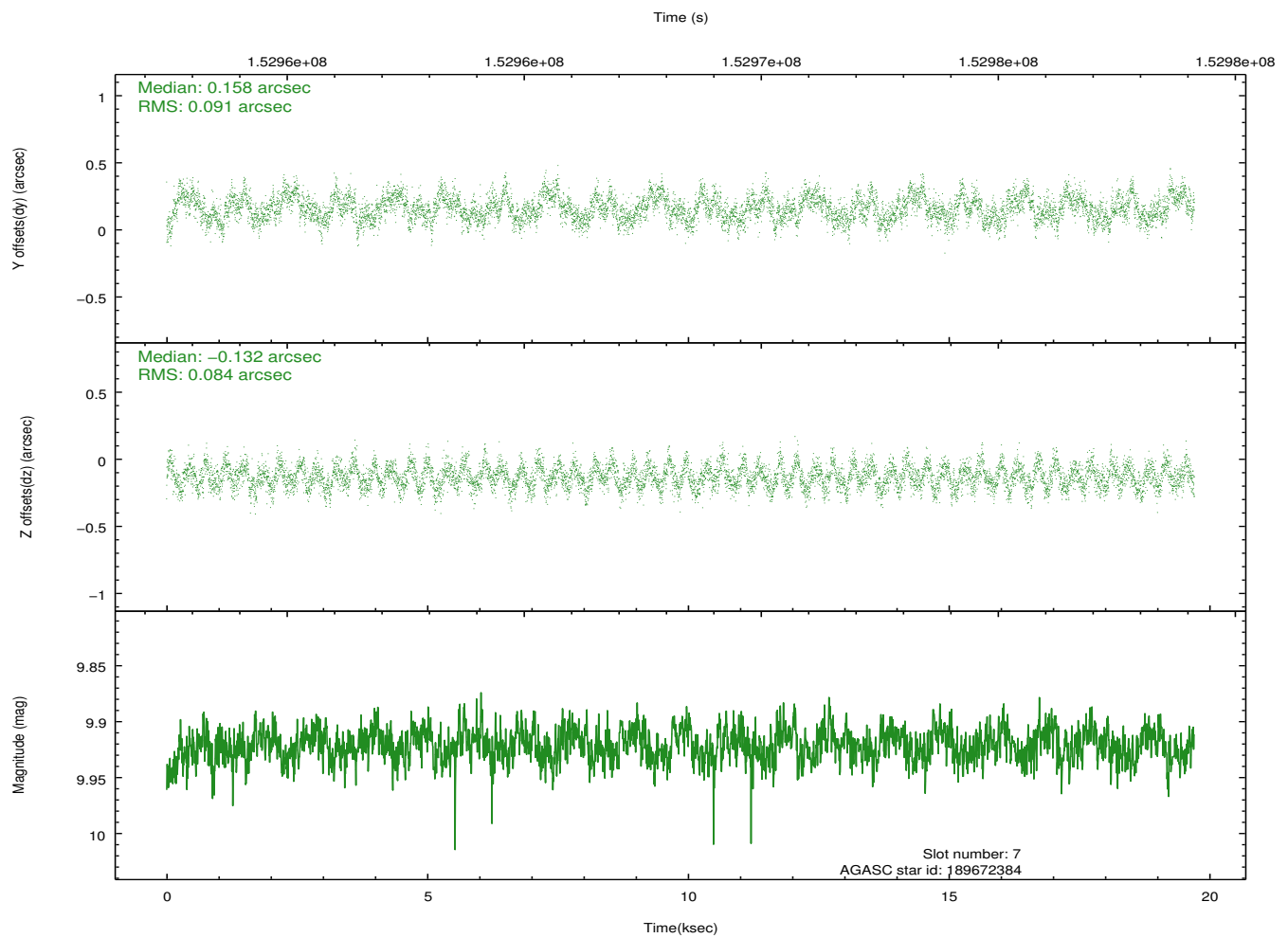
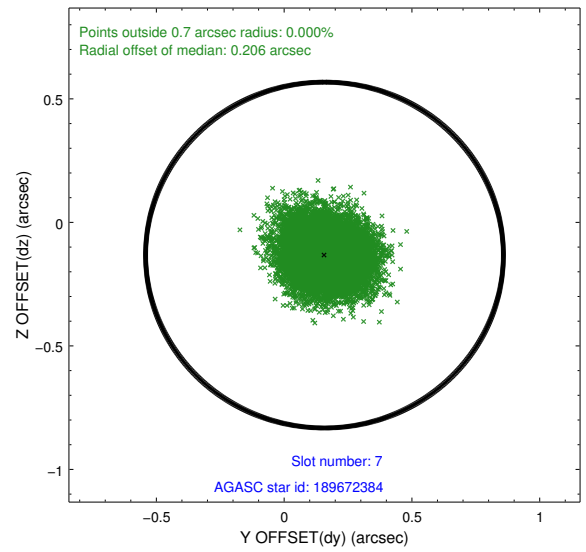
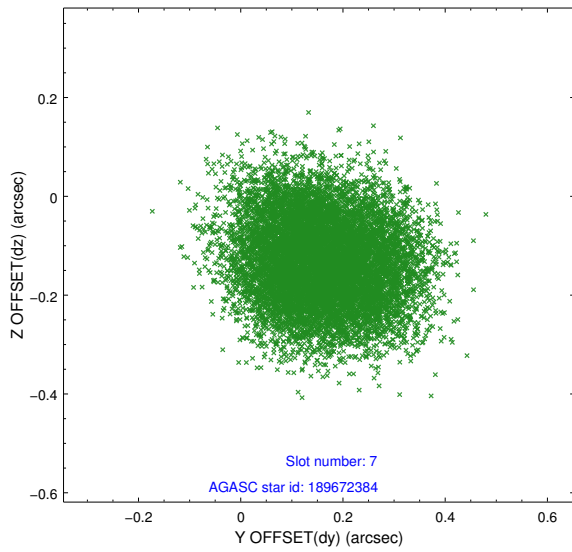
2.4.3 Slot 5



2.4.4 Slot 6

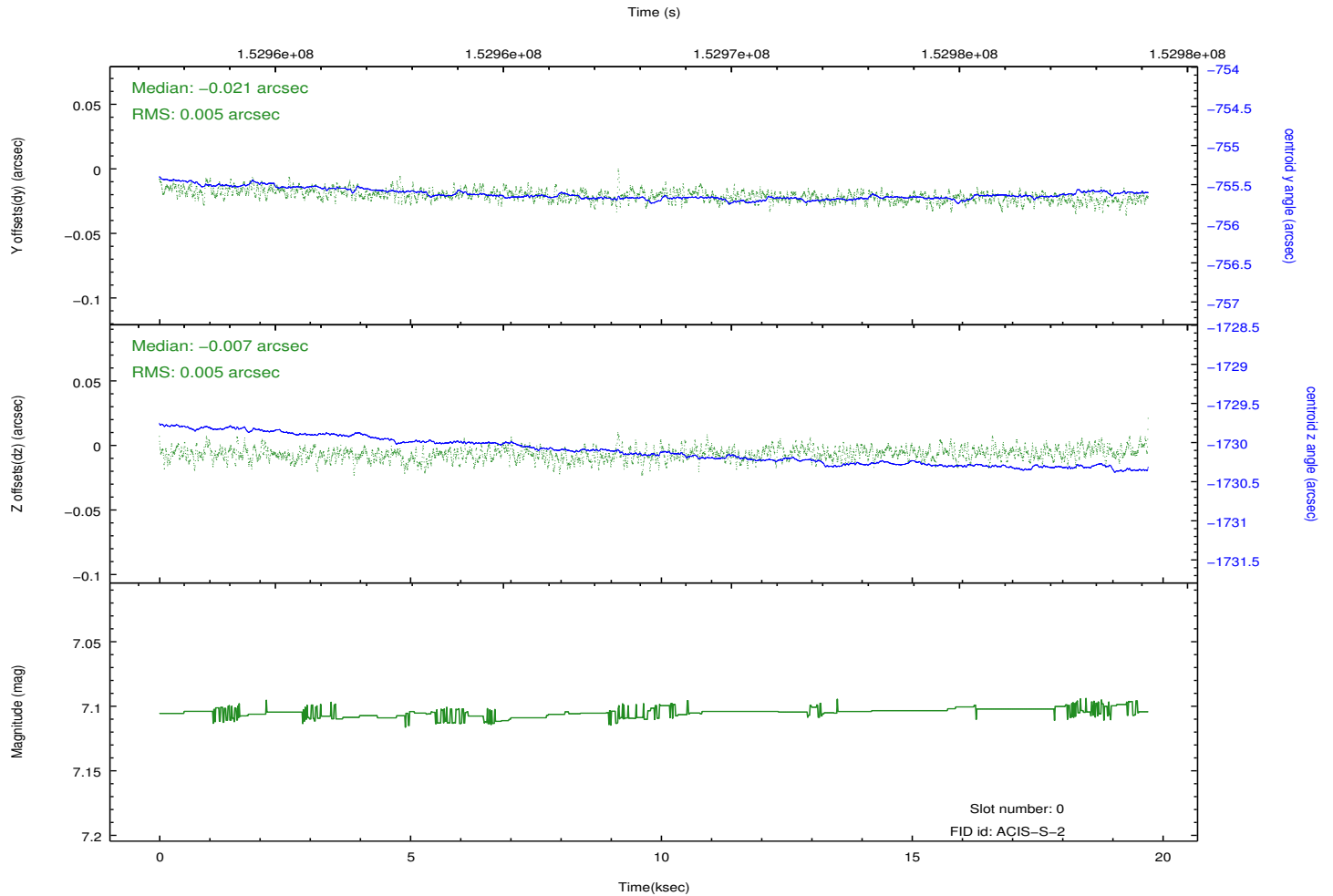
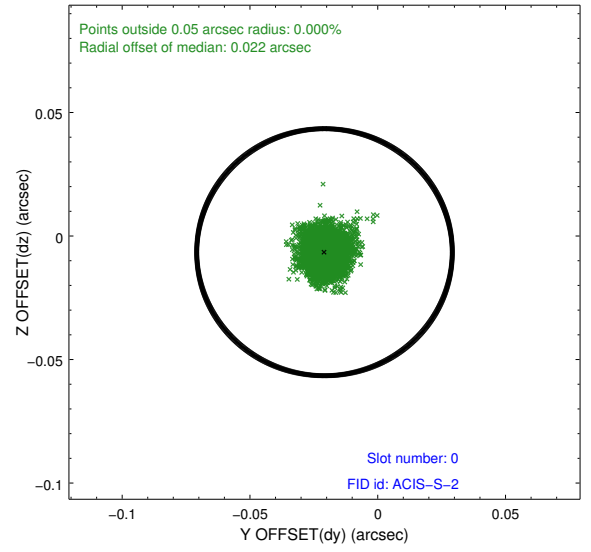
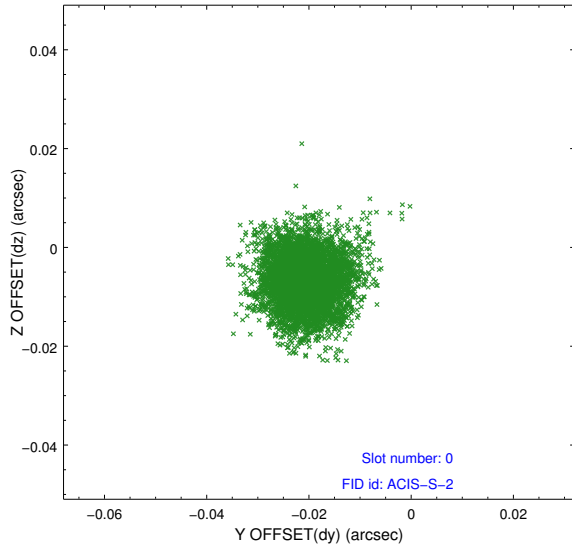


2.4.5 Slot 7

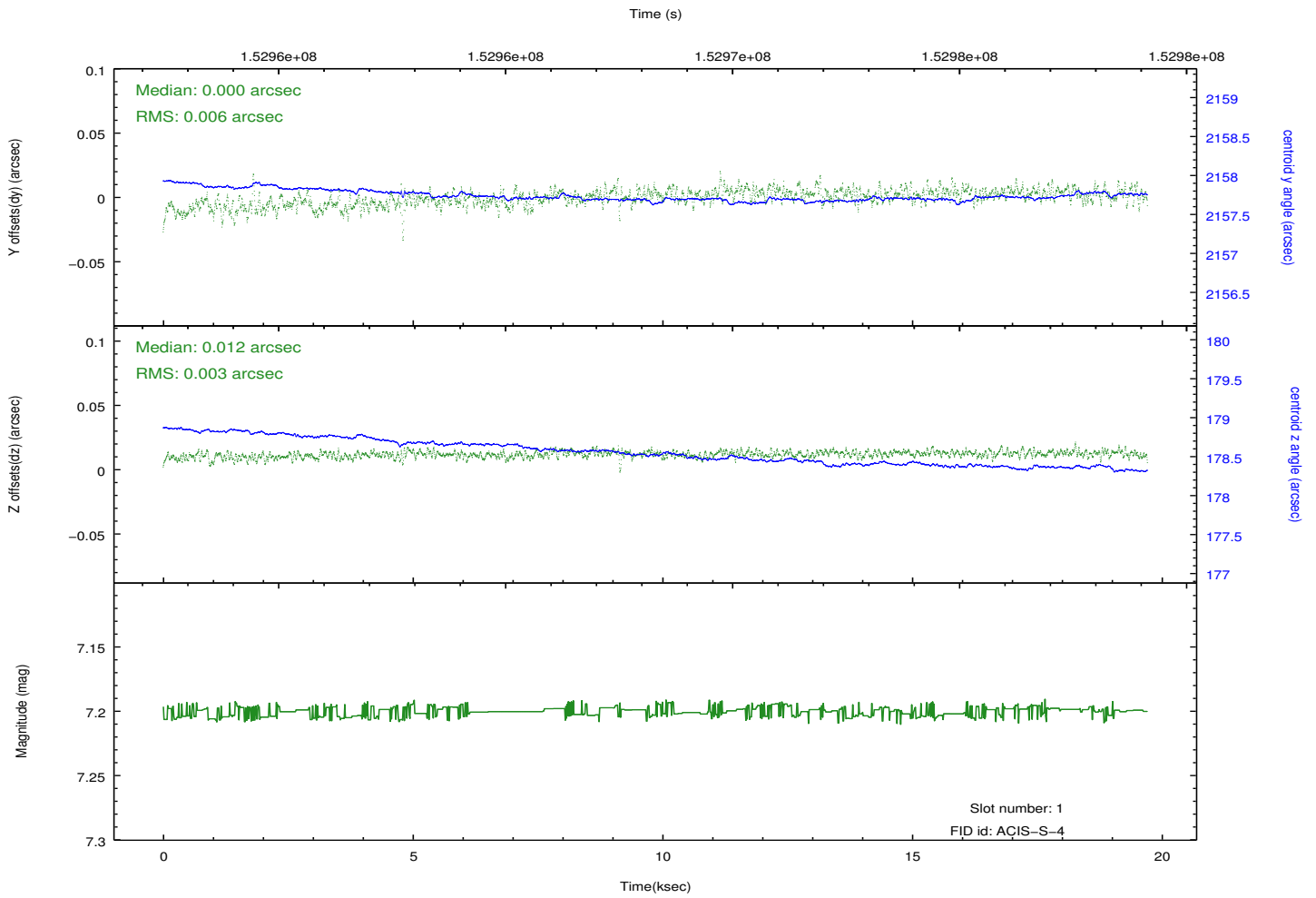
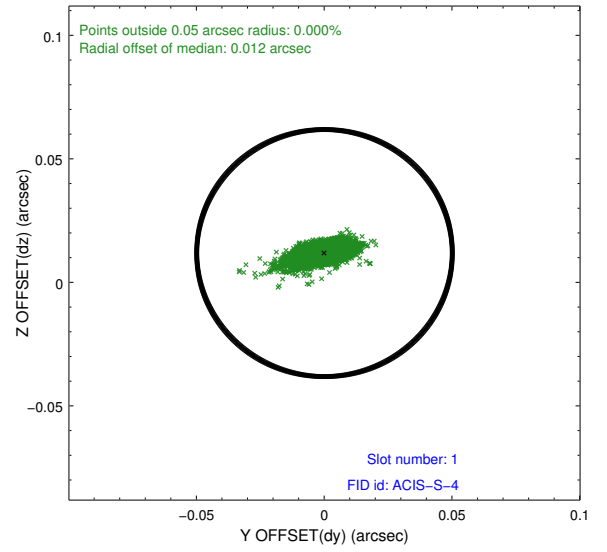
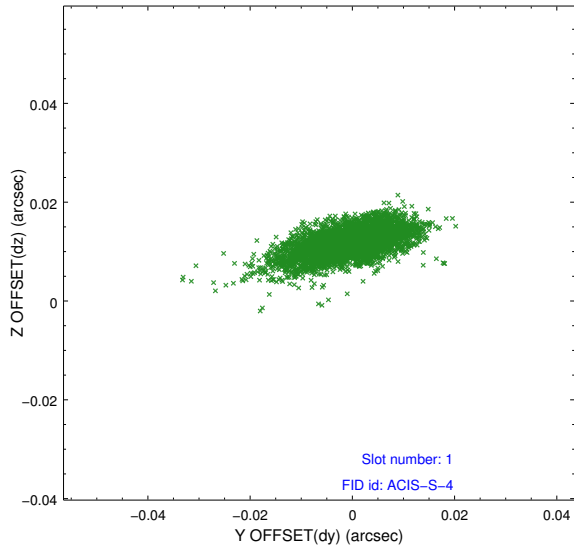


2.5 FID Slots

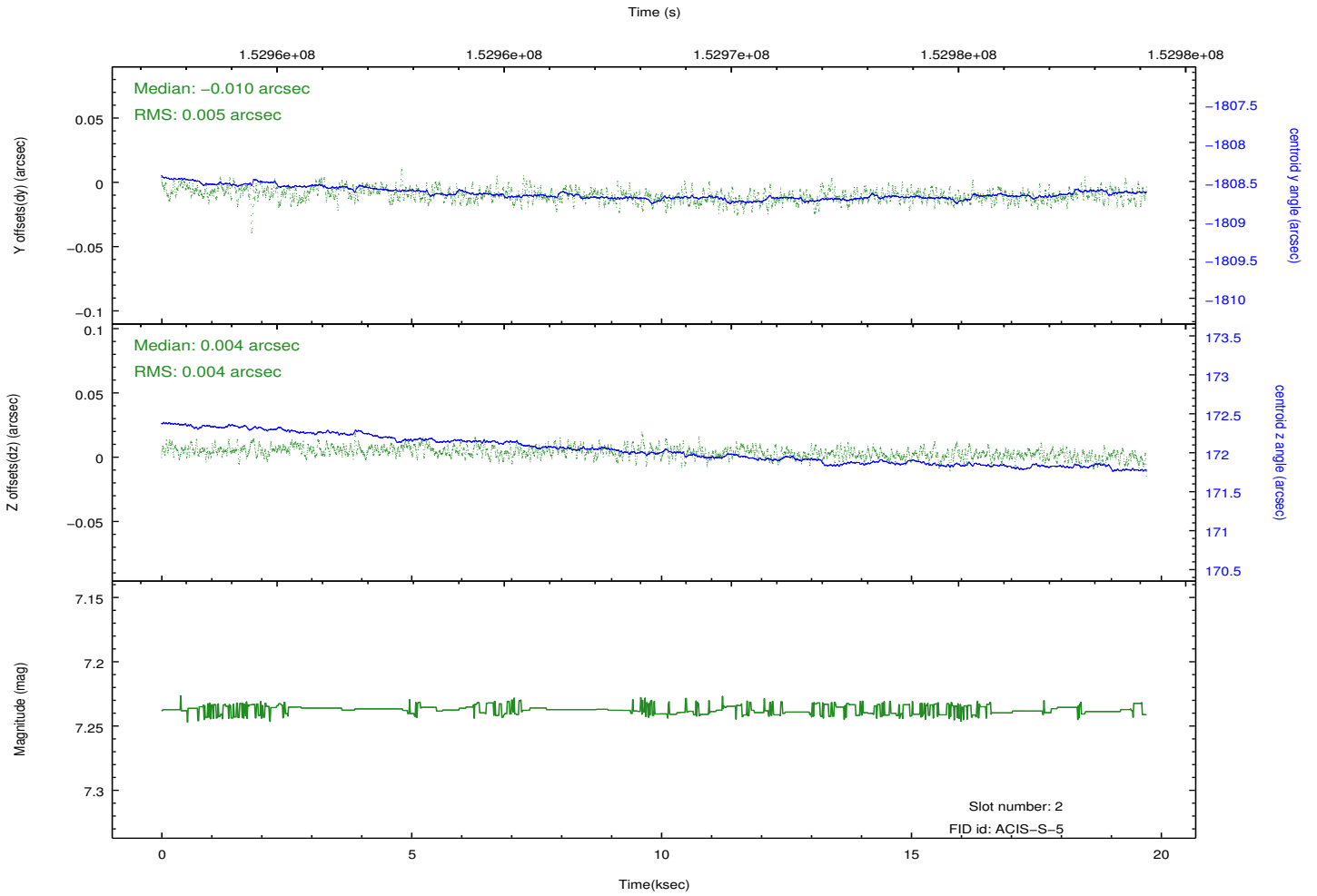
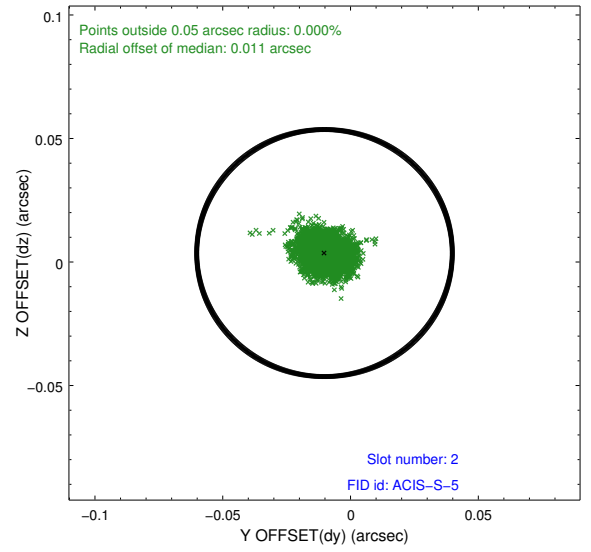
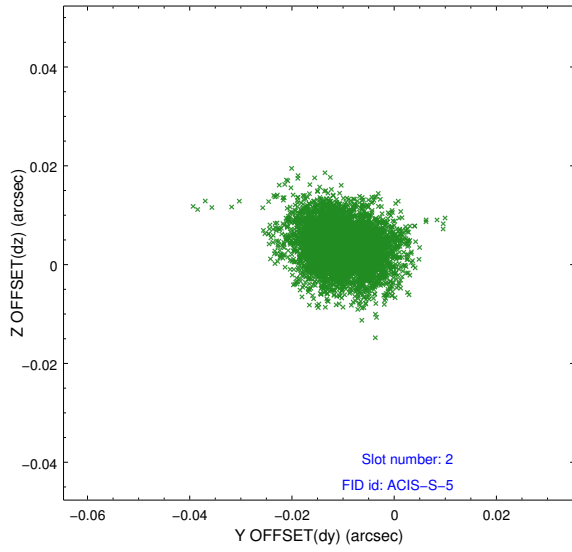
2.5.1 Slot 0



2.5.2 Slot 1



2.5.3 Slot 2



A Summary

A.1 Status

V&V Scientist	Jen Lauer
V&V Date (YYYY-MM-DD)	2012.10.26
V&V Edition	1
V&V Disposition and Status	OK
V&V Charge Time	19.709

A.2 Comments