

V&V Reference Report

L2 ASCDS Version : 8.4.5

Observation 3149 - L2 Version 3
Chandra X-Ray Center

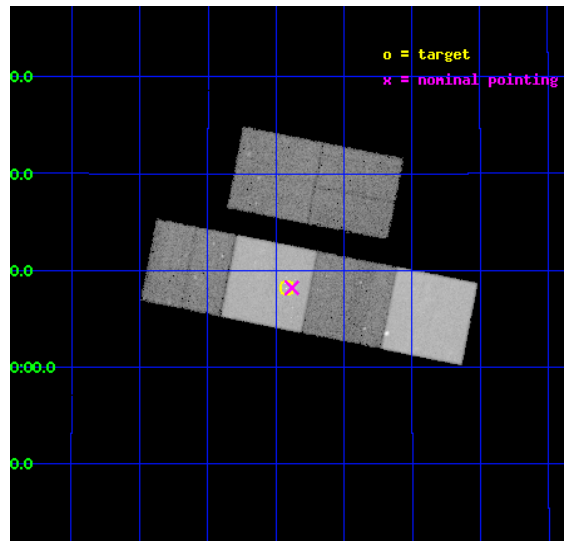
L2 Processing Date : Oct 3 2012

Contents

1	Front	2
2	OBI	3
2.1	OBI	3
2.1.1	Images	3
2.1.2	Bias	3
2.1.3	Parameters	4
2.1.4	Events	4
2.2	Compared Parameters	5
2.3	Aspect	6
2.4	Star Slots	9
2.4.1	Slot 3	9
2.4.2	Slot 4	10
2.4.3	Slot 5	11
2.4.4	Slot 6	12
2.4.5	Slot 7	13
2.5	FID Slots	14
2.5.1	Slot 0	14
2.5.2	Slot 1	15
2.5.3	Slot 2	16
A	Summary	17
A.1	Status	17
A.2	Comments	17

1 Front

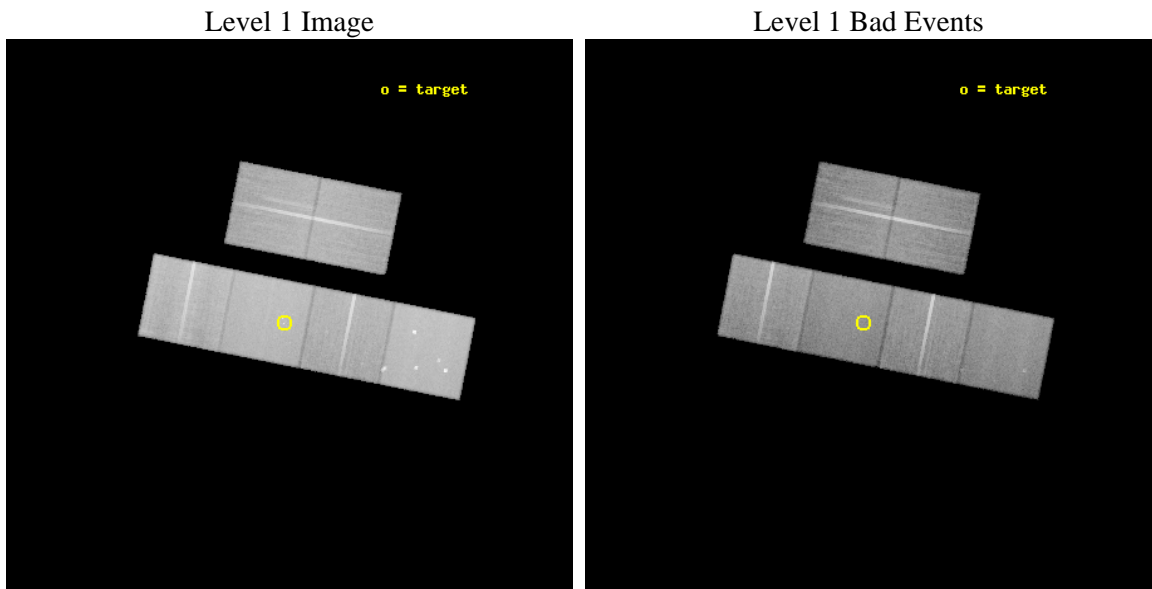
seq_num	700588	Sequence number
obs_id	3149	Observation id
title	CHANDRA OBSERVATIONS OF TYPE-2 LINERS: STARBURSTS OR AGNS ?	Propos
observer	Dr Andreas Zezas	Principal investigator
object	NGC 3507	Source name
dtcycle	0	
cycle	P	events from which exps? Prim/Second/Both
ra_targ	165.855833	Observer's specified target RA [deg]
dec_targ	18.136944	Observer's specified target Dec [deg]
ra_nom	165.8456319331	Nominal RA [deg]
dec_nom	18.13677313476	Nominal Dec [deg]
roll_nom	191.20793233691	Nominal Roll [deg]
revision	3	Processing version of data
ontime	39755.96984303	Sum of GTIs [s]
livetime	39252.555814706	Livetime [s]
ontime2	39752.769912764	Sum of GTIs [s]
ontime3	39755.846723035	Sum of GTIs [s]
ontime5	39755.928803027	Sum of GTIs [s]
ontime6	39755.887763038	Sum of GTIs [s]
ontime7	39755.96984303	Sum of GTIs [s]
ontime8	39752.564623117	Sum of GTIs [s]
l2events	420959	Number of level 2 events



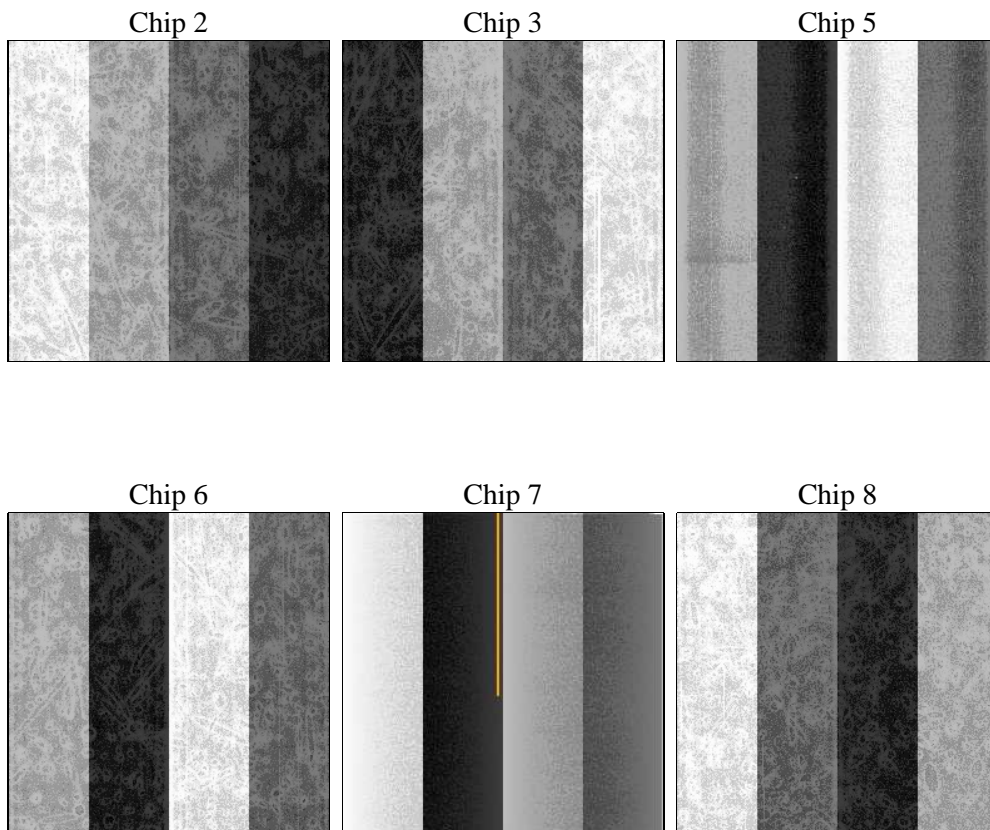
2 OBI

2.1 OBI

2.1.1 Images



2.1.2 Bias



2.1.3 Parameters

obi_num	1	Obi number	sched_exp_time	40000.000000	[s] Scheduled observation exposure time
ascdsver	8.4.5	Processing system revision	ontime	39755.96984303	Sum of GTIs [s]
caldbver	4.5.2	 	ontime2	39752.769912764	Sum of GTIs [s]
date	2012-10-03T04:53:20	Date and time of file creation	ontime3	39755.846723035	Sum of GTIs [s]
revision	3	Processing version of data	ontime5	39755.928803027	Sum of GTIs [s]
			ontime6	39755.887763038	Sum of GTIs [s]
			ontime7	39755.96984303	Sum of GTIs [s]
			ontime8	39752.564623117	Sum of GTIs [s]
			l1events	1924907	Number of level 1 events

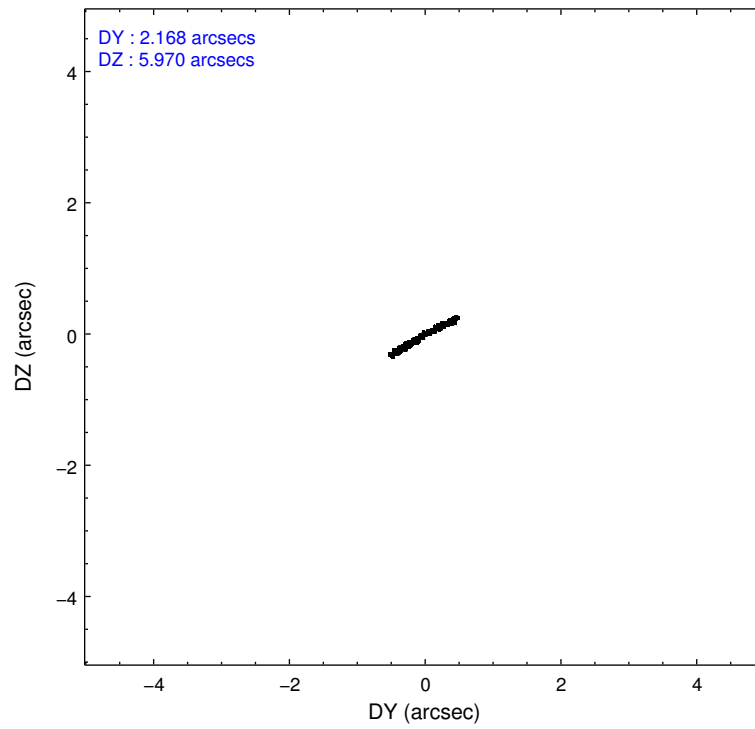
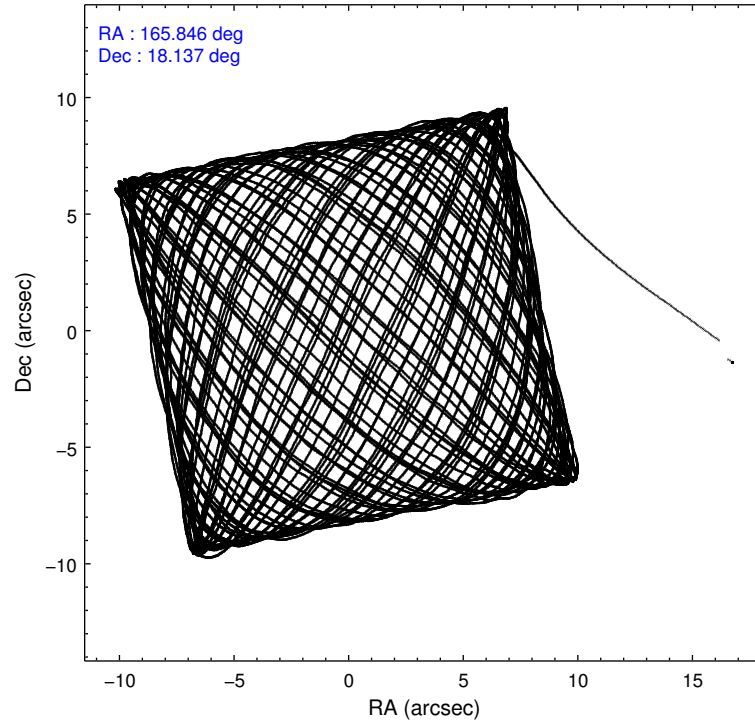
2.1.4 Events

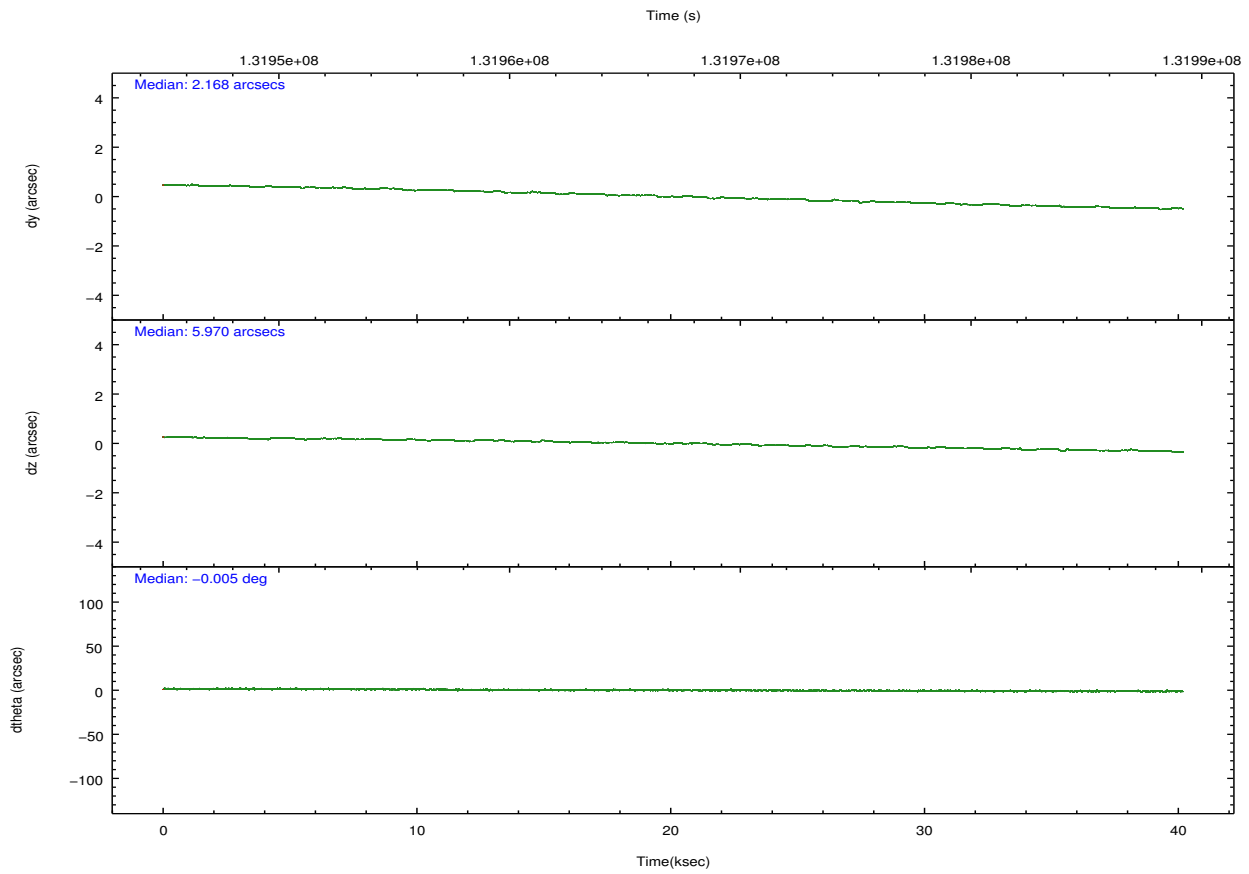
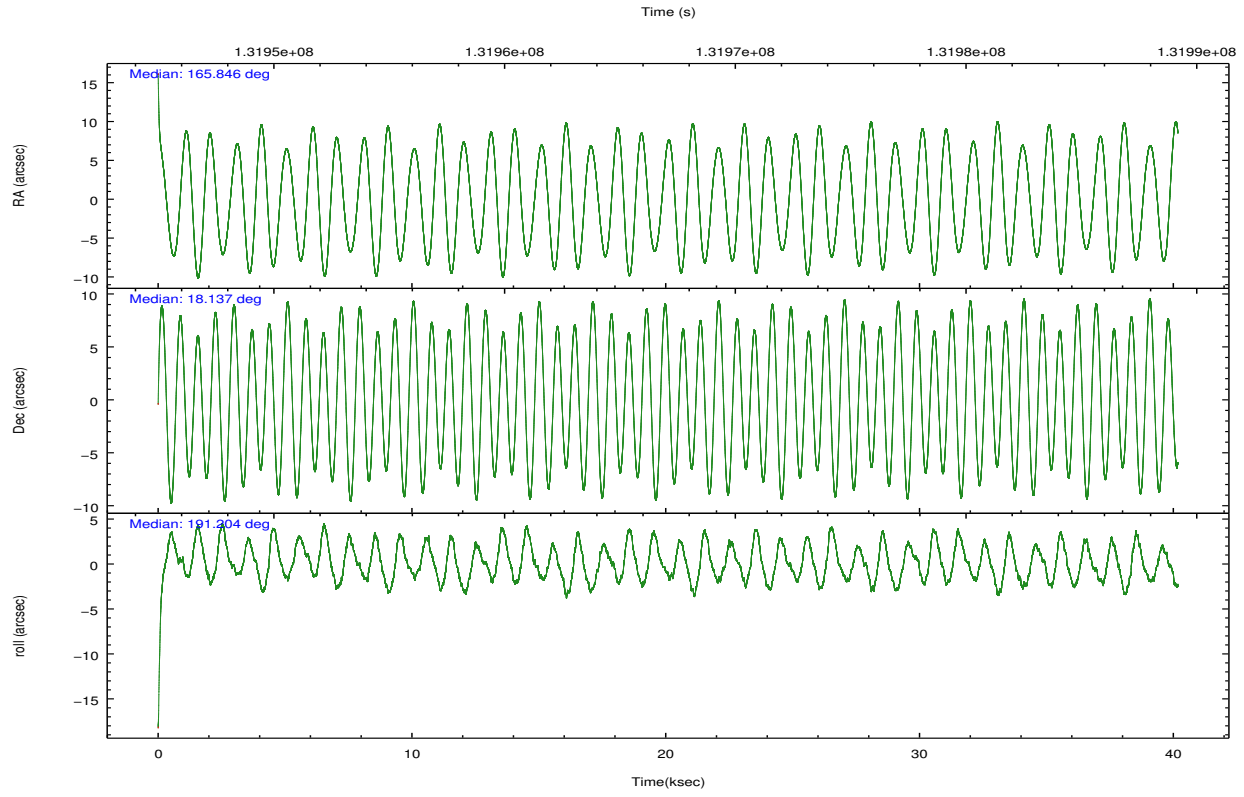
	ccd 2	ccd 3	ccd 5	ccd 6	ccd 7	ccd 8		ccd 2	ccd 3	ccd 5	ccd 6	ccd 7	ccd 8
level 1 events	277200	267059	394147	275719	352519	358263	grade 0 events	12506	12637	24808	12632	14137	25160
rejected events	246579	236555	210422	244001	205601	279411		4%	4%	6%	4%	4%	7%
rejected %	88%	88%	53%	88%	58%	77%	grade 1 events	128	117	897	128	362	243
								0%	0%	0%	0%	0%	0%
							grade 2 events	7001	6305	51362	6730	29189	16210
								2%	2%	13%	2%	8%	4%
							grade 3 events	2862	2987	7855	3143	13316	9344
								1%	1%	1%	1%	3%	2%
							grade 4 events	2779	2848	7482	3001	13097	8447
								1%	1%	1%	1%	3%	2%
							grade 5 events	9651	10549	29361	11648	33854	15086
								3%	3%	7%	4%	9%	4%
							grade 6 events	5474	5729	92234	6212	77183	19693
								1%	2%	23%	2%	21%	5%
							grade 7 events	236799	225887	180148	232225	171381	264080
								85%	84%	45%	84%	48%	73%

2.2 Compared Parameters

Parameter	Planned	Actual	Parameter	Planned	Actual
Instrument	ACIS	ACIS	Obspar format version number	7	7
Detector	ACIS-235678	ACIS-235678	Obspar file type	PREDICTED	ACTUAL
Grating	NONE	NONE	Obspar update status	NONE	UPDATED
Data mode	FAINT	FAINT	Number of optional ACIS chips dropped	0	0
Observation mode	POINTING	POINTING	On-chip summing requested	N	N
[deg] Pointing RA	165.866956	165.8456319331041	Subarray requested	NONE	NONE
[deg] Pointing Dec	18.154971	18.13677313475985	Alternating exposures requested	N	N
[deg] Pointing Roll	191.044665	191.2079323369102	[s] Primary exposure time	0.000000	3.2
[mm] SIM focus pos	-0.684267	-0.6828225247311905			
[mm] SIM defocus	0	0.001444936568705701			
[mm] SIM translation stage pos	-190.132523	-190.1400660498719			
[mm] SIM translation stage offset	0	0.00754346686406393			
[s] Observation start time (MET)	131947175.184000	131946180.14228			
Observation start date	2002-03-08T03:58:31	2002-03-08T03:43:00			
[s] Observation end time (MET)	131987175.184000	131987942.74397			
Observation end date	2002-03-08T15:05:11	2002-03-08T15:19:02			
Read mode	TIMED	TIMED			

2.3 Aspect



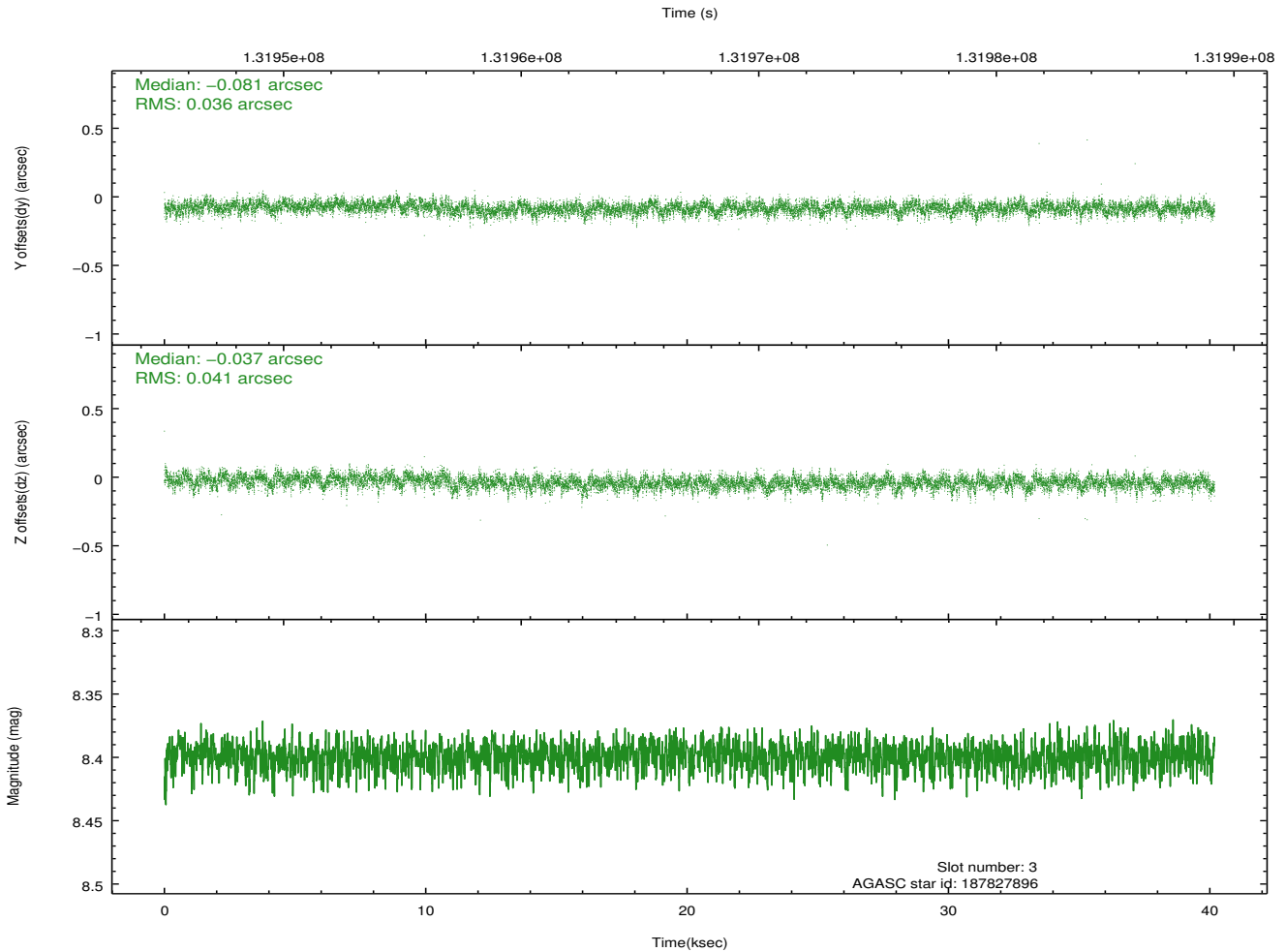
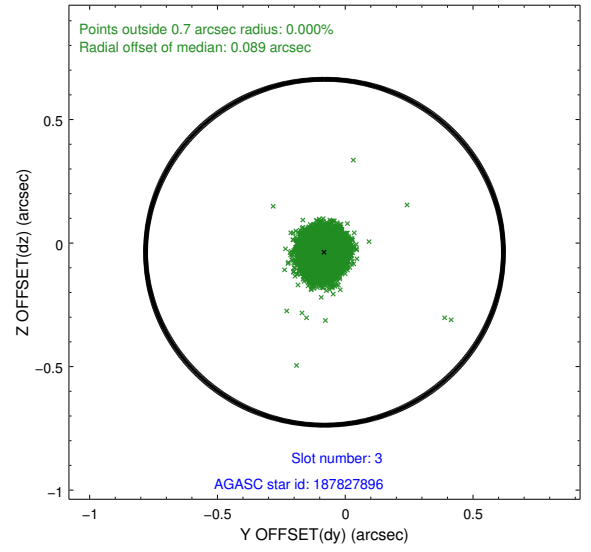
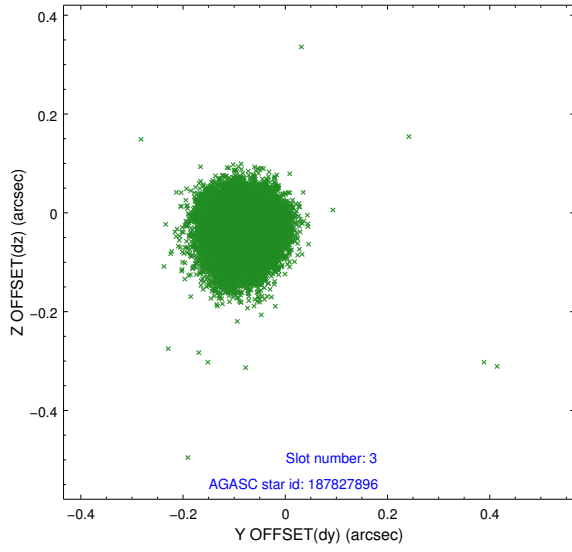


Slot Statistics

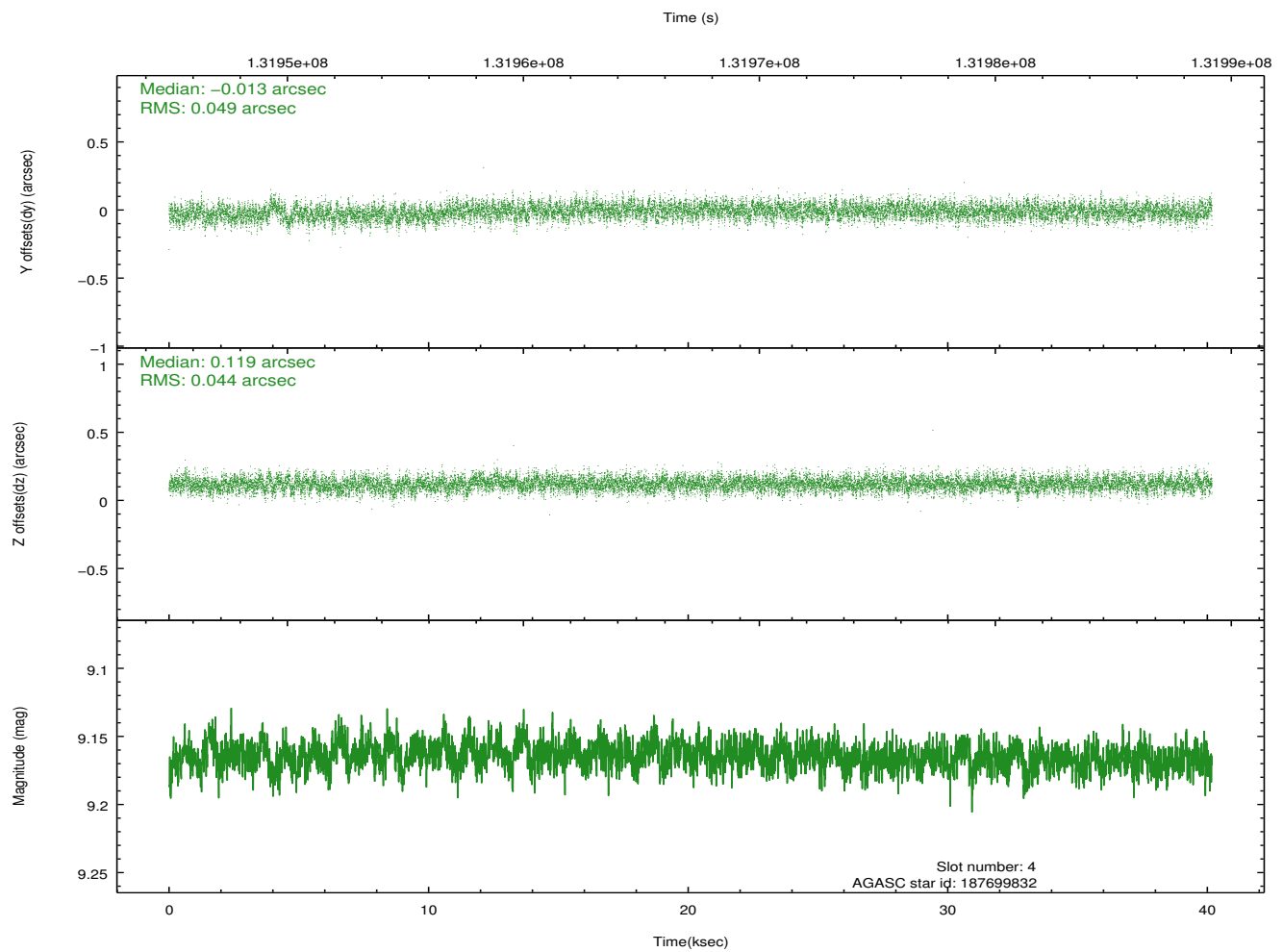
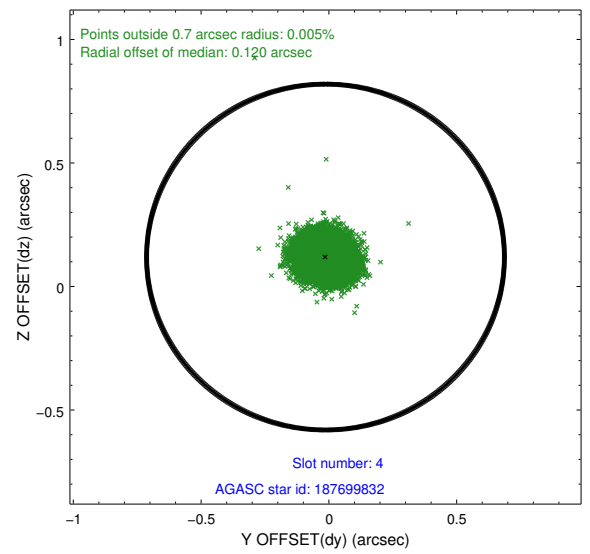
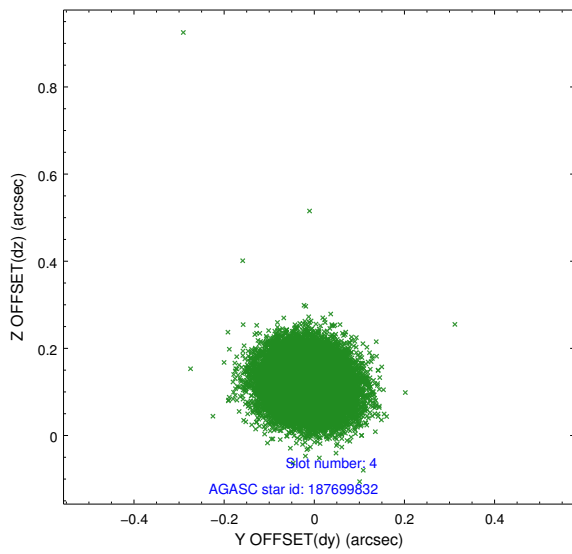
slot	status	id	mag	n_pts	med_dy	med_dz	dr1	dr2	ra	dec	mean_y	mean_z
0	FID	ACIS-S-3	7.37	9800	-0.087	-0.067	0.015	0.025	0.000000	0.000000	58.35	-1856.22
1	FID	ACIS-S-4	7.21	9798	0.005	0.079	0.014	0.021	0.000000	0.000000	2158.57	181.47
2	FID	ACIS-S-5	7.24	9797	0.048	-0.000	0.012	0.026	0.000000	0.000000	-1807.56	175.04
3	GUIDE	187827896	8.40	19595	-0.081	-0.037	0.058	0.096	166.435623	18.837897	-2372.97	-2044.63
4	GUIDE	187699832	9.16	19582	-0.013	0.119	0.071	0.114	165.325101	17.709551	2130.68	1215.77
5	GUIDE	187833232	8.97	19594	0.081	-0.088	0.066	0.107	165.605176	18.069121	939.01	131.57
6	GUIDE	187831936	9.20	19592	0.025	-0.082	0.091	0.145	166.346710	17.662710	-1275.88	2052.82
7	GUIDE	187837080	9.08	19595	-0.013	0.091	0.089	0.138	166.190381	18.830164	-1547.09	-2175.04

2.4 Star Slots

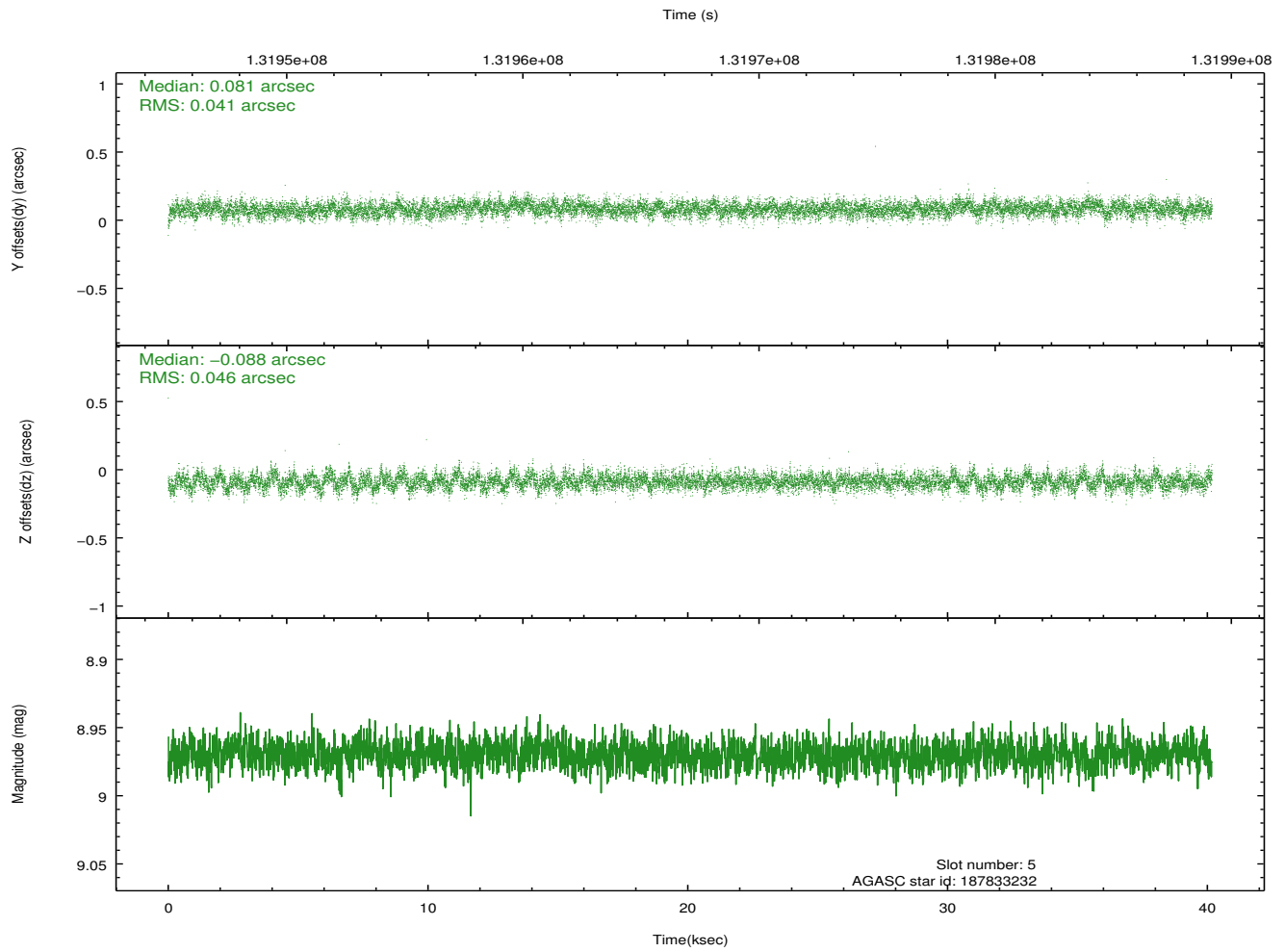
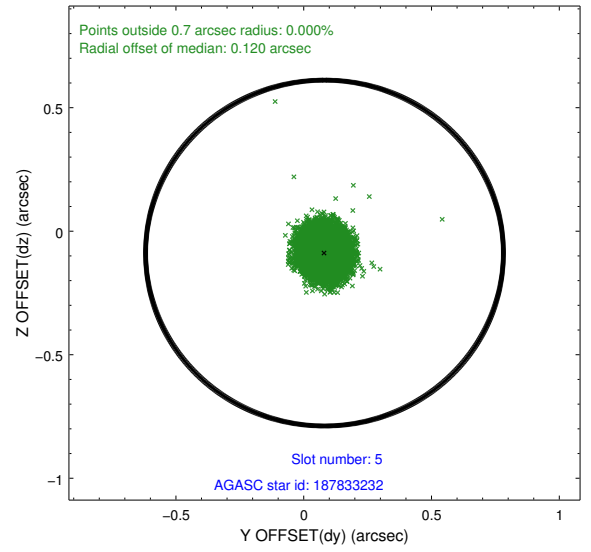
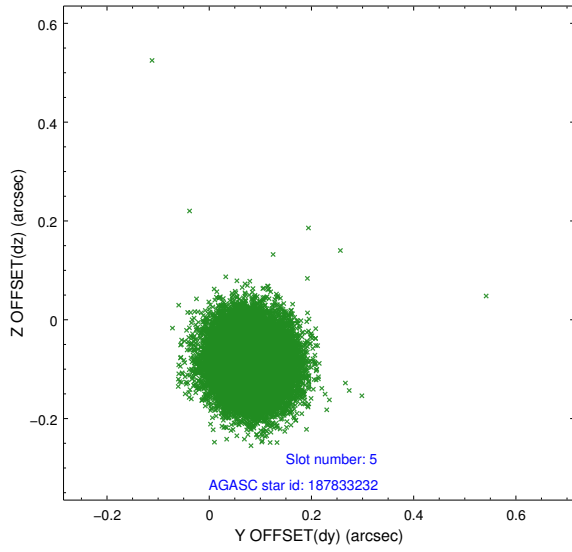
2.4.1 Slot 3



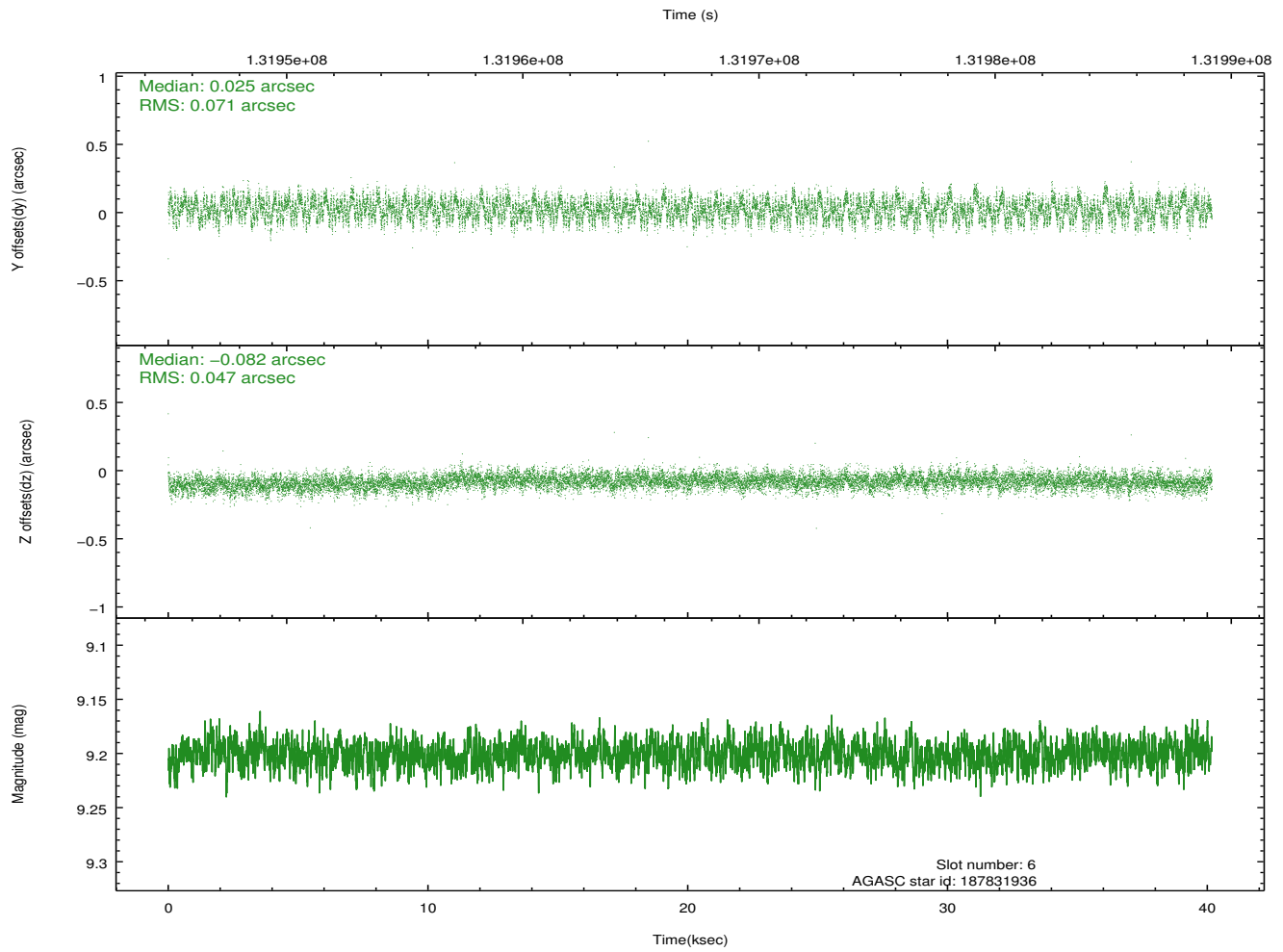
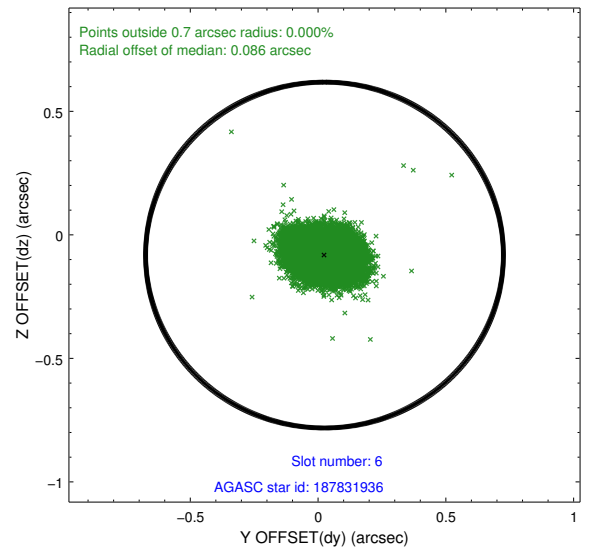
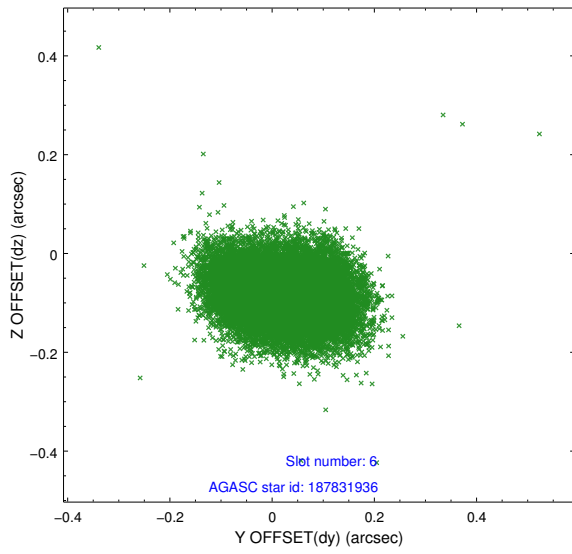
2.4.2 Slot 4



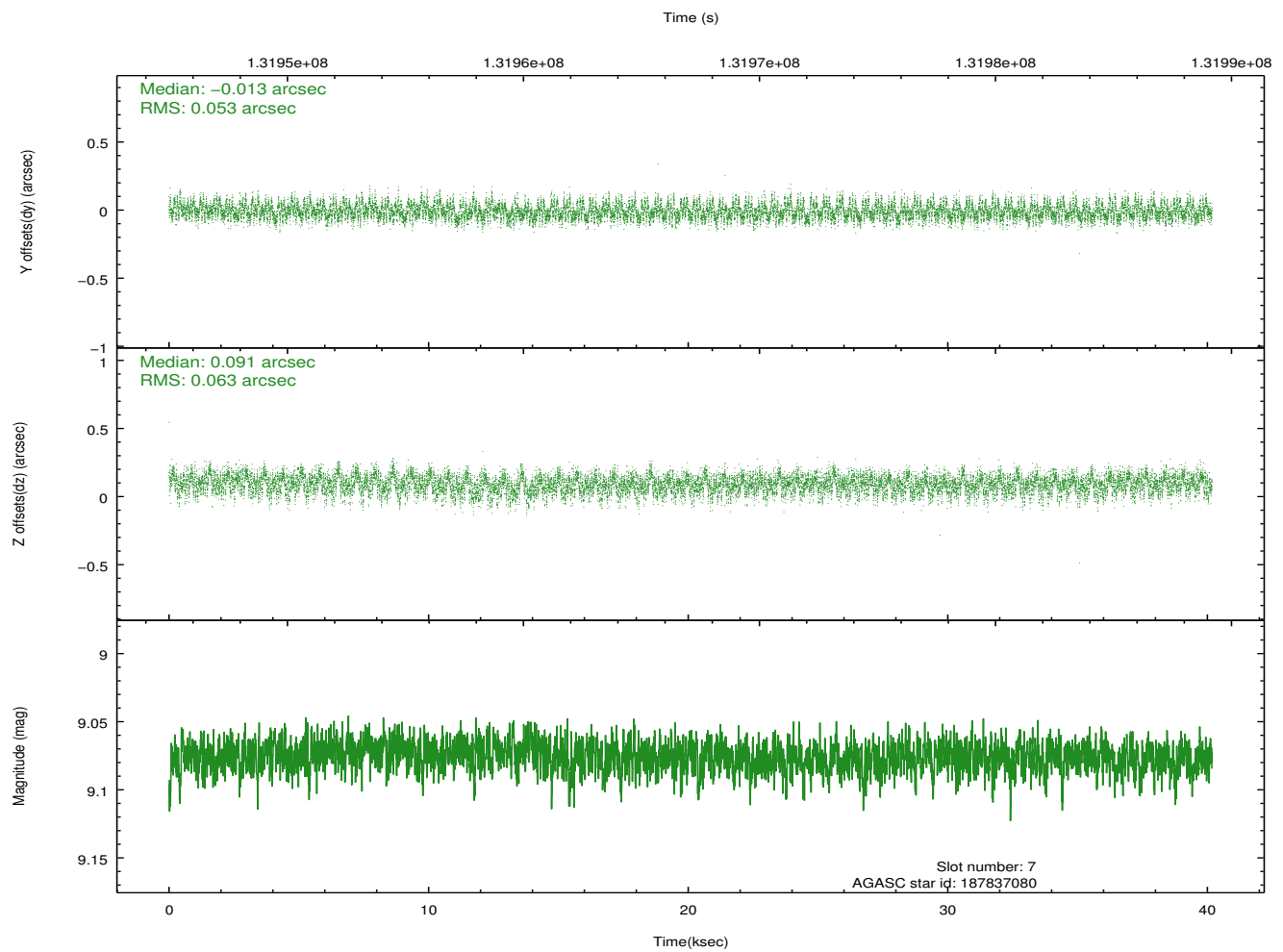
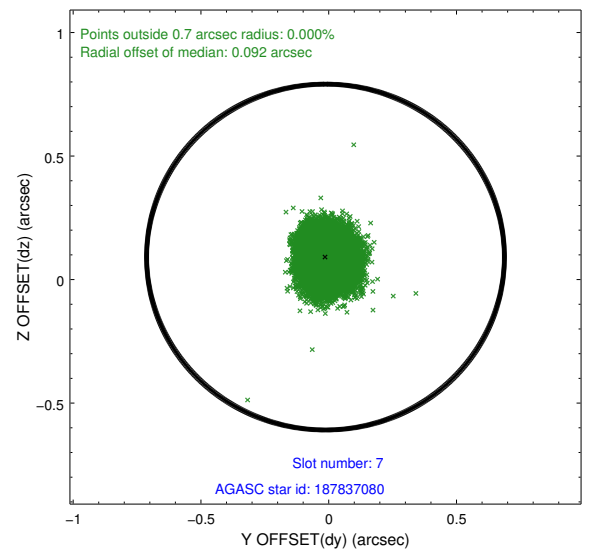
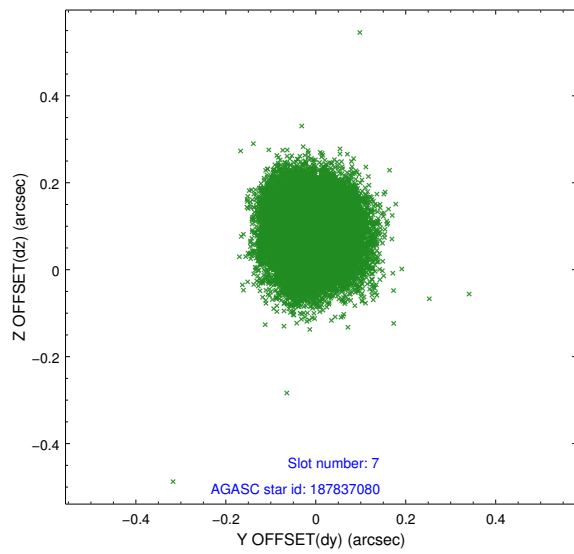
2.4.3 Slot 5



2.4.4 Slot 6

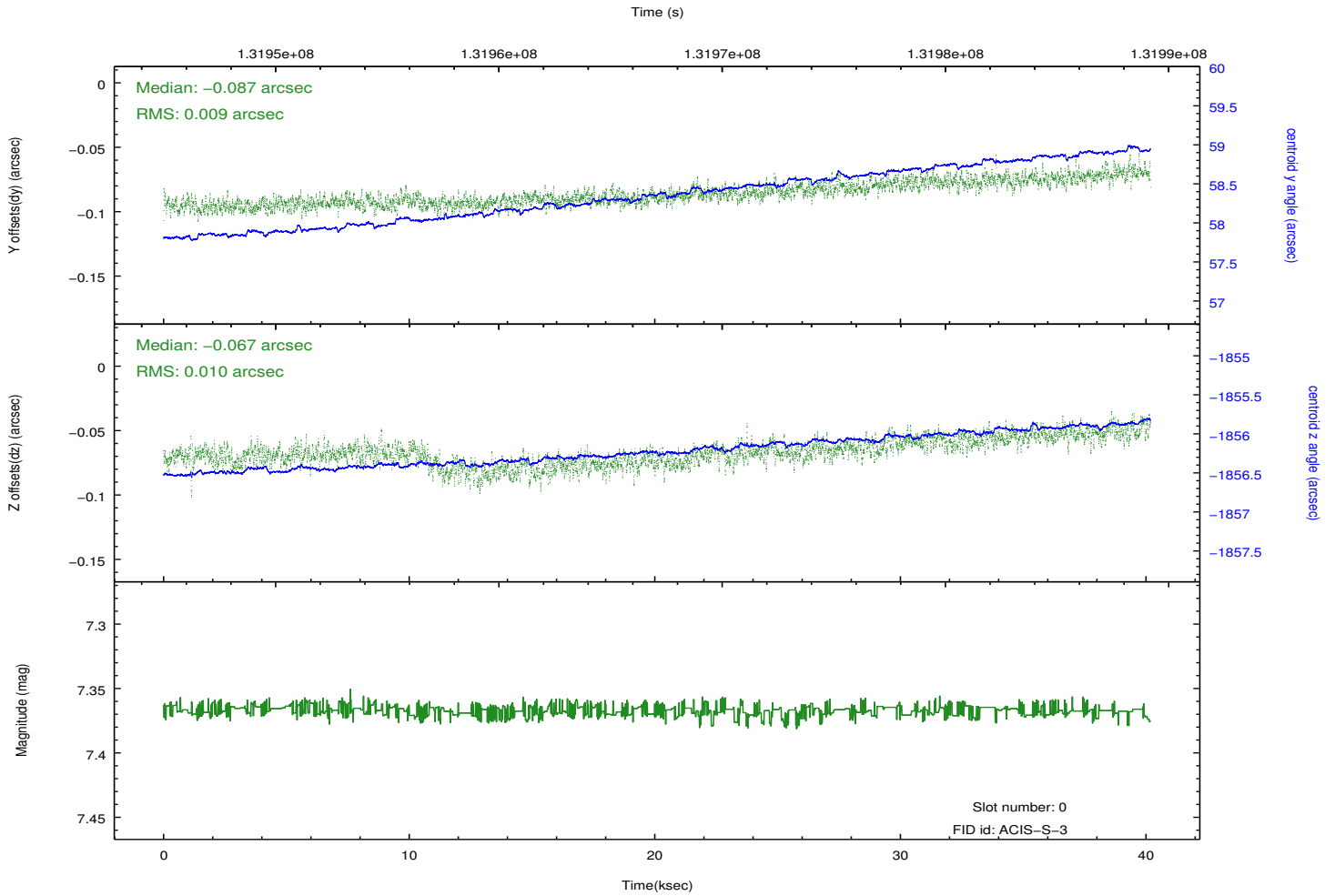
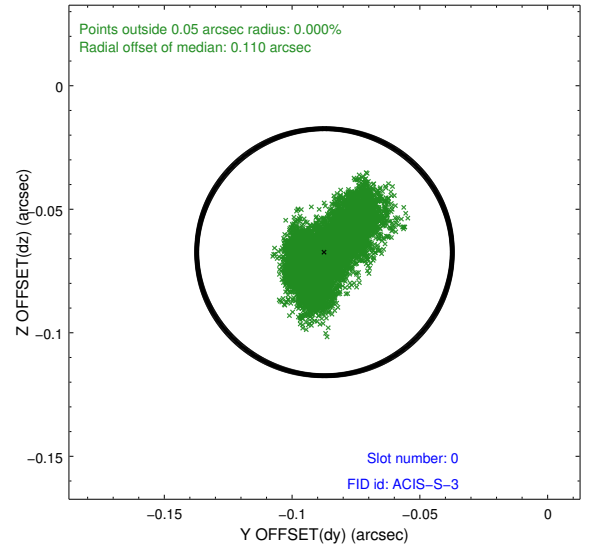
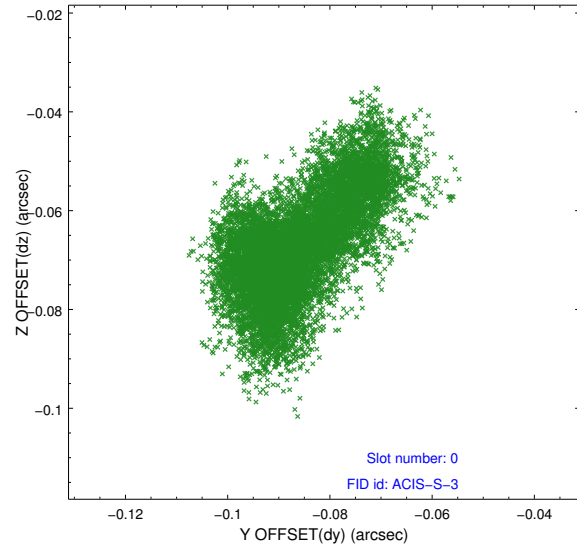


2.4.5 Slot 7

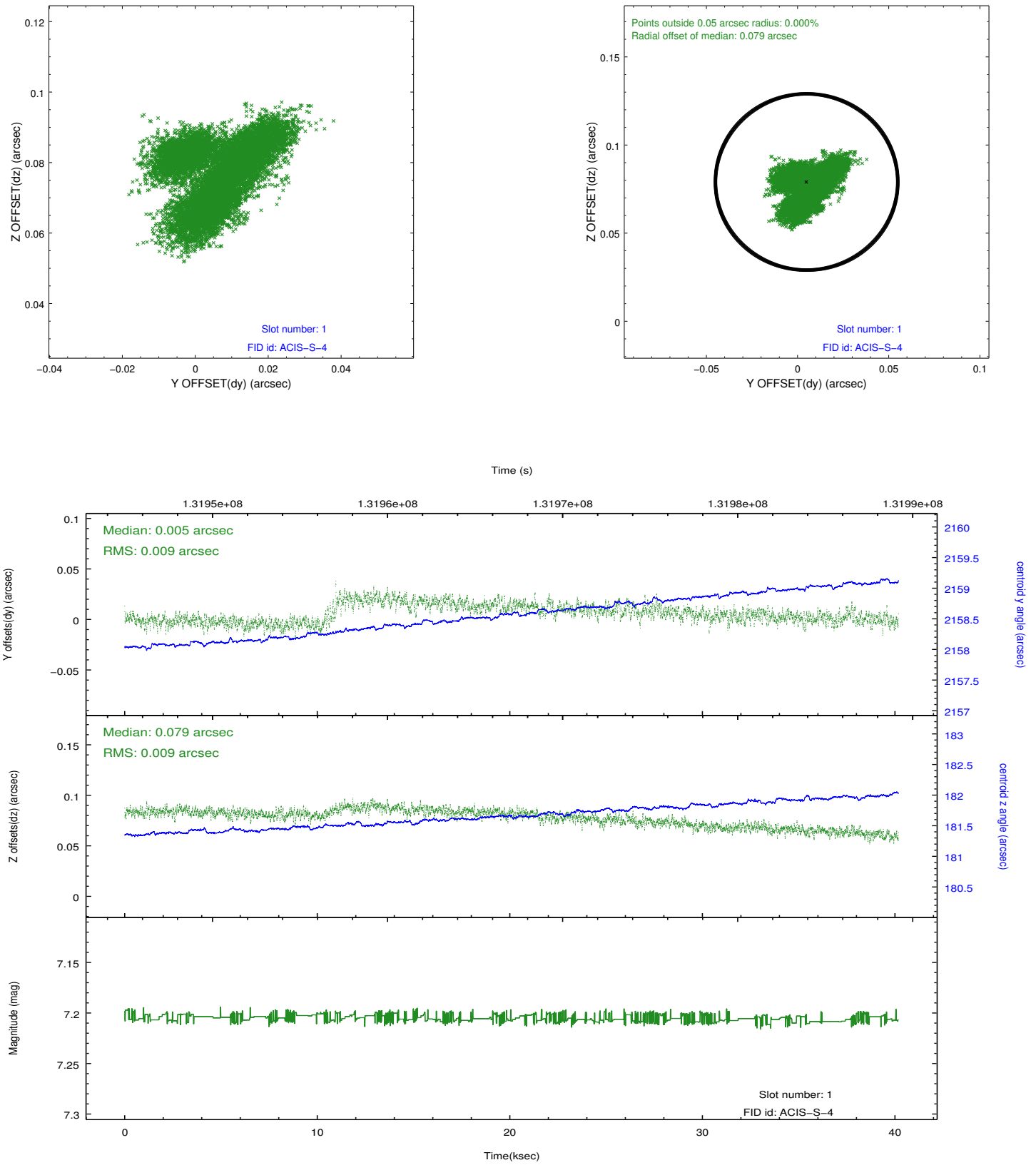


2.5 FID Slots

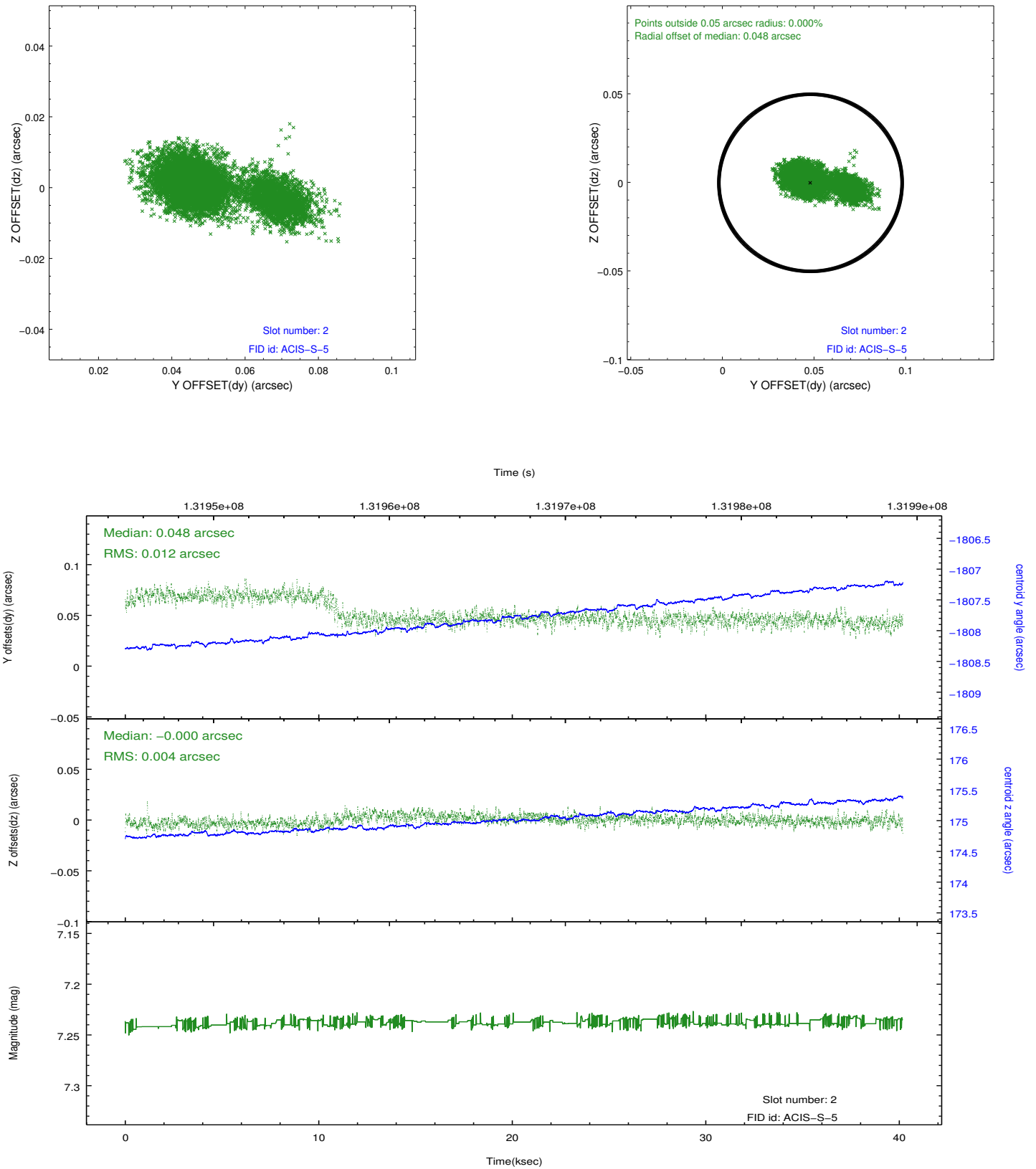
2.5.1 Slot 0



2.5.2 Slot 1



2.5.3 Slot 2



A Summary

A.1 Status

V&V Scientist	Jen Lauer
V&V Date (YYYY-MM-DD)	2012.10.04
V&V Edition	1
V&V Disposition and Status	OK
V&V Charge Time	39.756

A.2 Comments