

V&V Reference Report

L2 ASCDS Version : 8.4.5

Observation 3289 - L2 Version 3
Chandra X-Ray Center

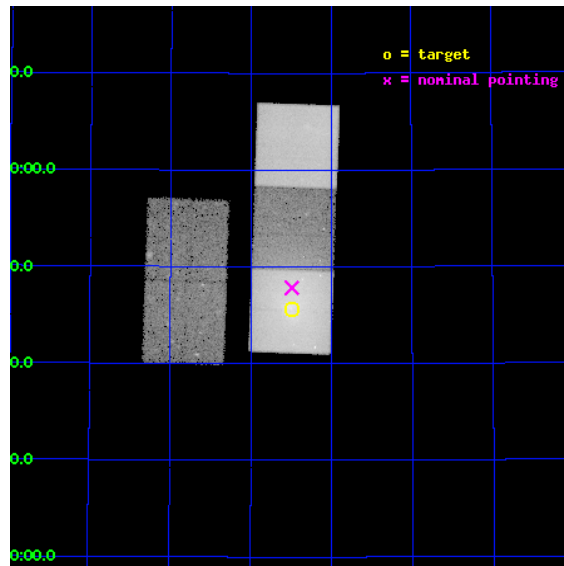
L2 Processing Date : Oct 17 2012

Contents

1	Front	2
2	OBI	3
2.1	OBI	3
2.1.1	Images	3
2.1.2	Bias	3
2.1.3	Parameters	4
2.1.4	Events	4
2.2	Compared Parameters	5
2.3	Aspect	6
2.4	Star Slots	9
2.4.1	Slot 3	9
2.4.2	Slot 4	10
2.4.3	Slot 5	11
2.4.4	Slot 6	12
2.4.5	Slot 7	13
2.5	FID Slots	14
2.5.1	Slot 0	14
2.5.2	Slot 1	15
2.5.3	Slot 2	16
A	Summary	17
A.1	Status	17
A.2	Comments	17

1 Front

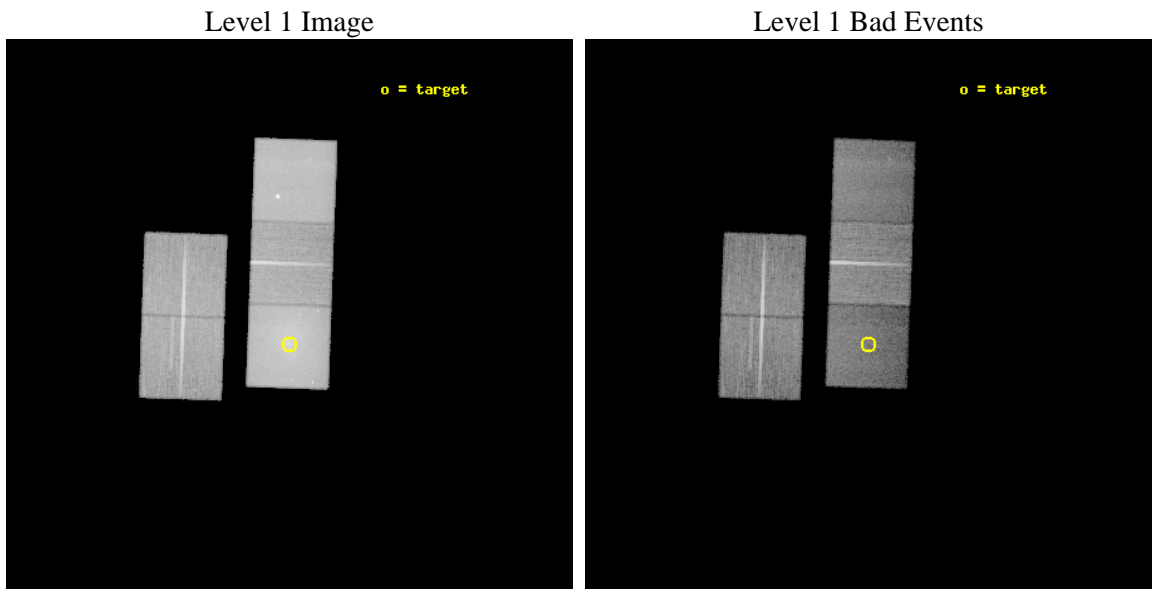
seq_num	800289	Sequence number
obs_id	3289	Observation id
title	REHEATING THE GAS IN CLUSTER COOLING FLOWS	Proposal title
observer	Dr. Laurence David	Principal investigator
object	ABELL 576	Source name
dtycycle	0	
cycle	P	events from which exps? Prim/Second/Both
ra_targ	110.372083	Observer's specified target RA [deg]
dec_targ	55.759722	Observer's specified target Dec [deg]
ra_nom	110.37287777457	Nominal RA [deg]
dec_nom	55.797119076654	Nominal Dec [deg]
roll_nom	92.035925873258	Nominal Roll [deg]
revision	3	Processing version of data
ontime	39102.938585281	Sum of GTIs [s]
livetime	38592.0299055	Livetime [s]
ontime2	39093.351524621	Sum of GTIs [s]
ontime3	39096.533534795	Sum of GTIs [s]
ontime5	39102.897545278	Sum of GTIs [s]
ontime6	39099.715535045	Sum of GTIs [s]
ontime7	39102.938585281	Sum of GTIs [s]
l2events	564428	Number of level 2 events



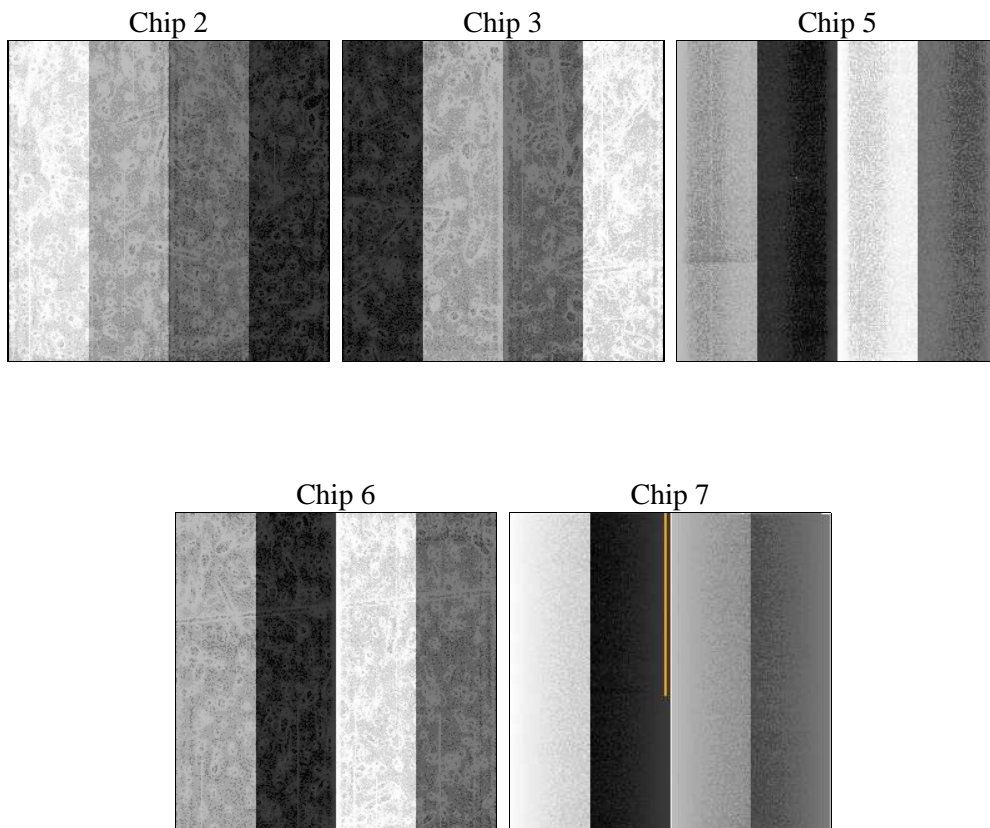
2 OBI

2.1 OBI

2.1.1 Images



2.1.2 Bias



2.1.3 Parameters

obi_num	1	Obi number	sched_exp_time	38997.068000	[s] Scheduled observation exposure time
ascdsver	8.4.5	Processing system revision	ontime	39102.938585281	Sum of GTIs [s]
caldbver	4.5.2	 	ontime2	39093.351524621	Sum of GTIs [s]
date	2012-10-17T00:53:36	Date and time of file creation	ontime3	39096.533534795	Sum of GTIs [s]
revision	3	Processing version of data	ontime5	39102.897545278	Sum of GTIs [s]
			ontime6	39099.715535045	Sum of GTIs [s]
			ontime7	39102.938585281	Sum of GTIs [s]
			l1events	1319160	Number of level 1 events

2.1.4 Events

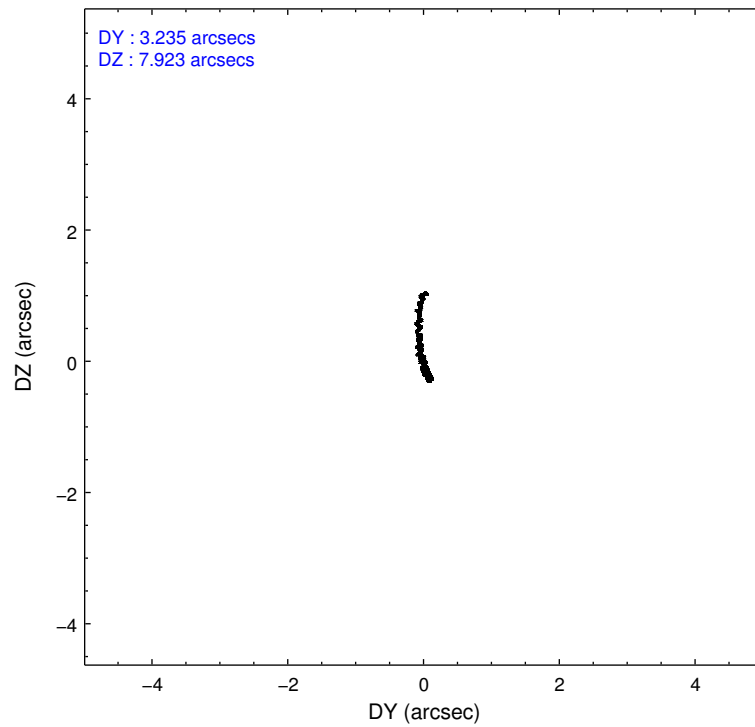
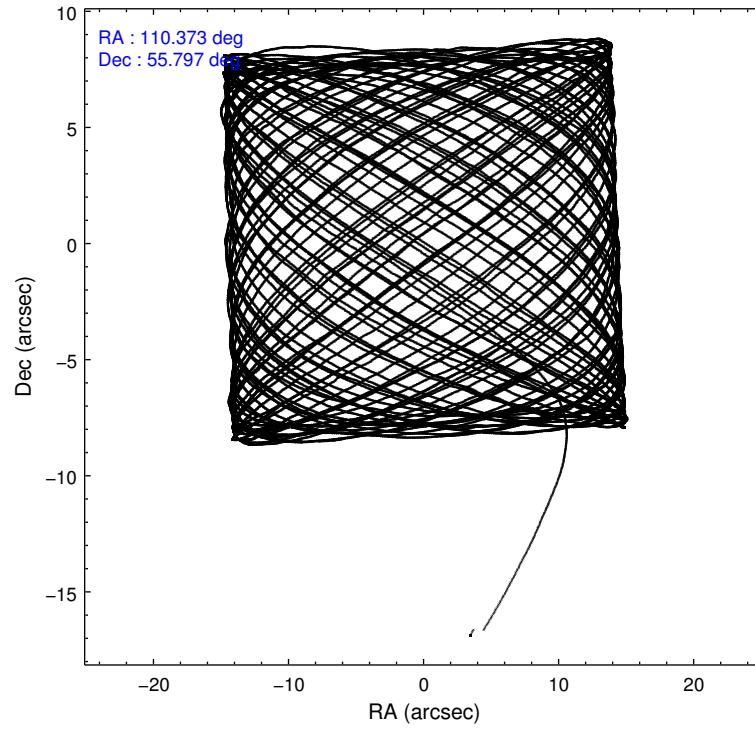
	ccd 2	ccd 3	ccd 5	ccd 6	ccd 7
level 1 events	198610	193470	331313	212344	383423
rejected events	176391	170615	117967	174749	95299
rejected %	88%	88%	35%	82%	24%

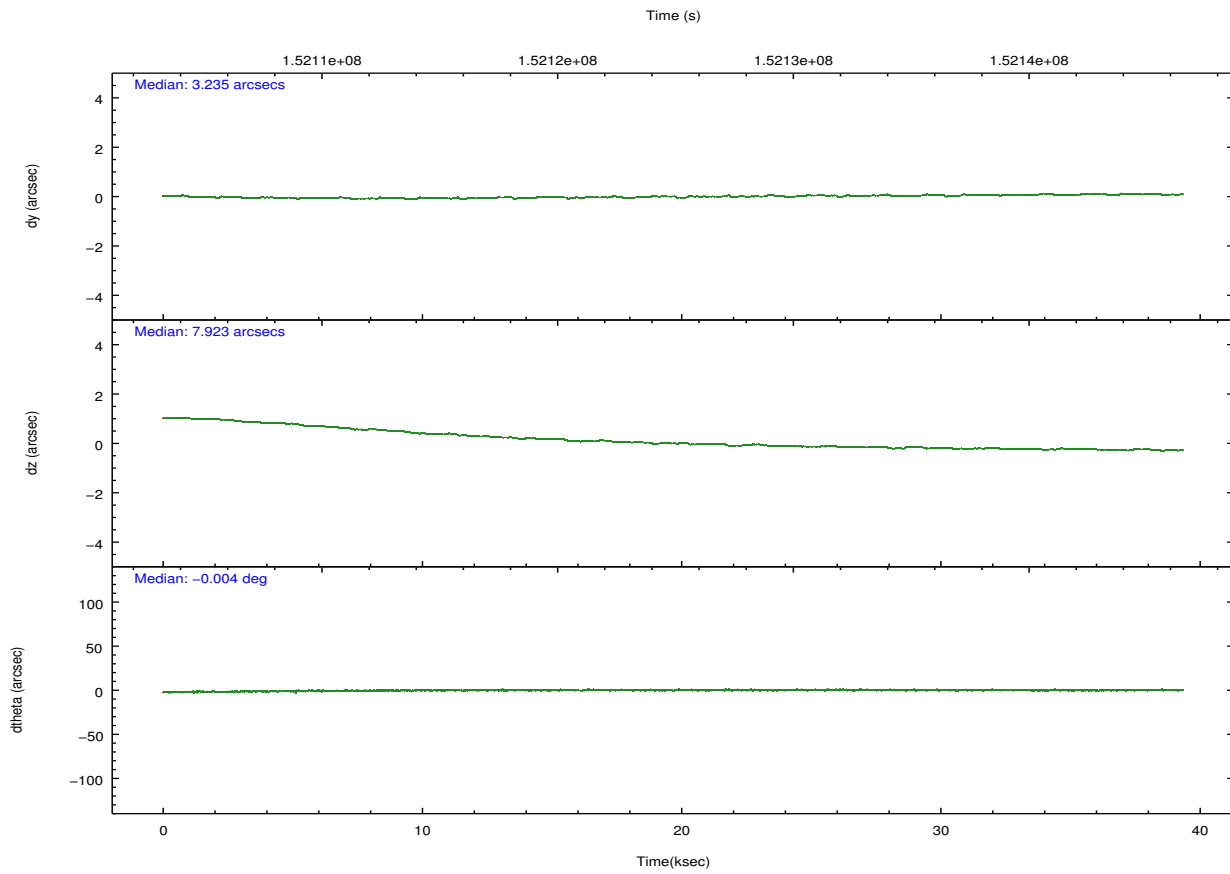
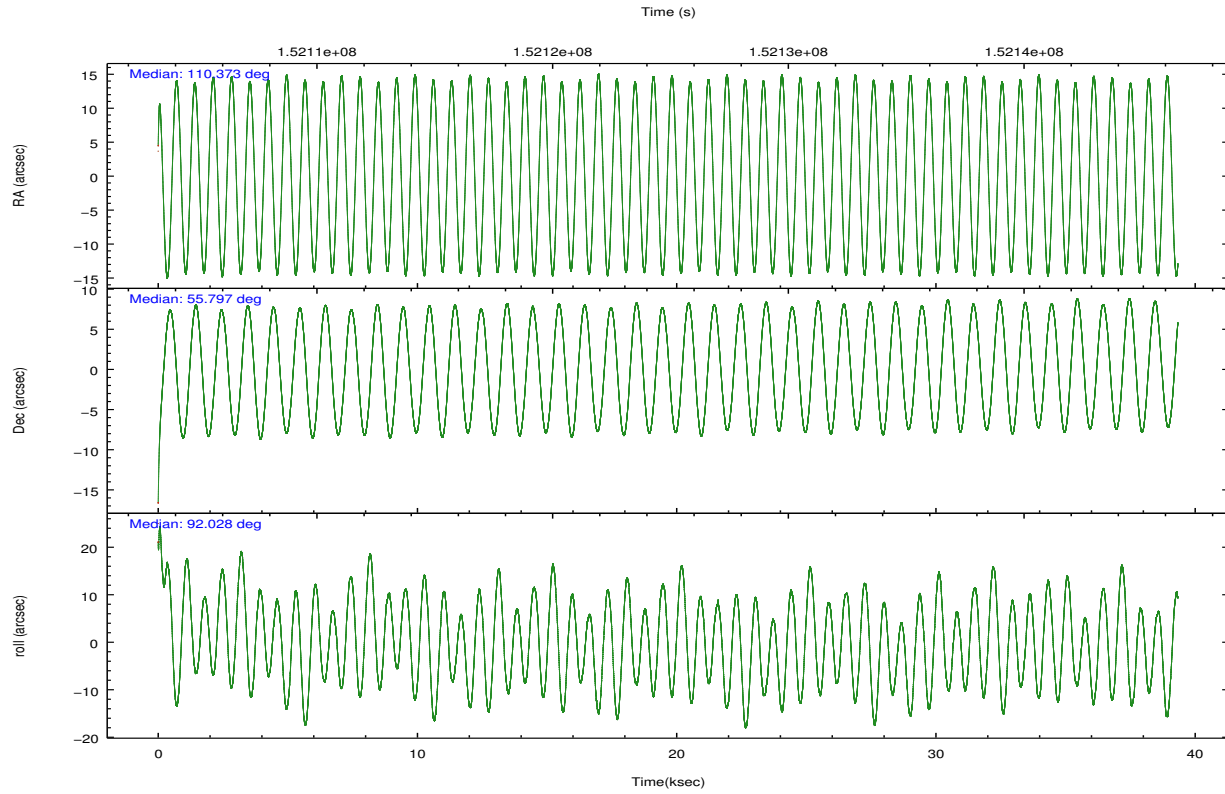
	ccd 2	ccd 3	ccd 5	ccd 6	ccd 7
grade 0 events	10378	11108	29231	22501	50489
	5%	5%	8%	10%	13%
grade 1 events	106	109	190	133	196
	0%	0%	0%	0%	0%
grade 2 events	4434	4118	60192	5630	63488
	2%	2%	18%	2%	16%
grade 3 events	2131	2231	12170	2696	28541
	1%	1%	3%	1%	7%
grade 4 events	2147	2090	12014	2616	28503
	1%	1%	3%	1%	7%
grade 5 events	5156	6132	20651	6397	20831
	2%	3%	6%	3%	5%
grade 6 events	3136	3309	99887	4160	117232
	1%	1%	30%	1%	30%
grade 7 events	171122	164373	96978	168211	74143
	86%	84%	29%	79%	19%

2.2 Compared Parameters

Parameter	Planned	Actual	Parameter	Planned	Actual
Instrument	ACIS	ACIS	Obspar format version number	7	7
Detector	ACIS-23567	ACIS-23567	Obspar file type	PREDICTED	ACTUAL
Grating	NONE	NONE	Obspar update status	NONE	UPDATED
Data mode	VFAINT	VFAINT	Number of optional ACIS chips dropped	0	0
Observation mode	POINTING	POINTING	On-chip summing requested	N	N
[deg] Pointing RA	110.399104	110.3728777745715	Subarray requested	NONE	NONE
[deg] Pointing Dec	55.774231	55.79711907665364	Alternating exposures requested	N	N
[deg] Pointing Roll	91.857614	92.03592587325753	[s] Primary exposure time	0.000000	3.1
[mm] SIM focus pos	-0.684267	-0.6828225247311905			
[mm] SIM defocus	0	0.001444936568705701			
[mm] SIM translation stage pos	-190.132523	-190.1400660498719			
[mm] SIM translation stage offset	0	0.00754346686406393			
[s] Observation start time (MET)	152105569.184000	152104522.33135			
Observation start date	2002-10-27T11:31:45	2002-10-27T11:15:22			
[s] Observation end time (MET)	152144566.184000	152144881.19553			
Observation end date	2002-10-27T22:21:42	2002-10-27T22:28:01			
Read mode	TIMED	TIMED			

2.3 Aspect



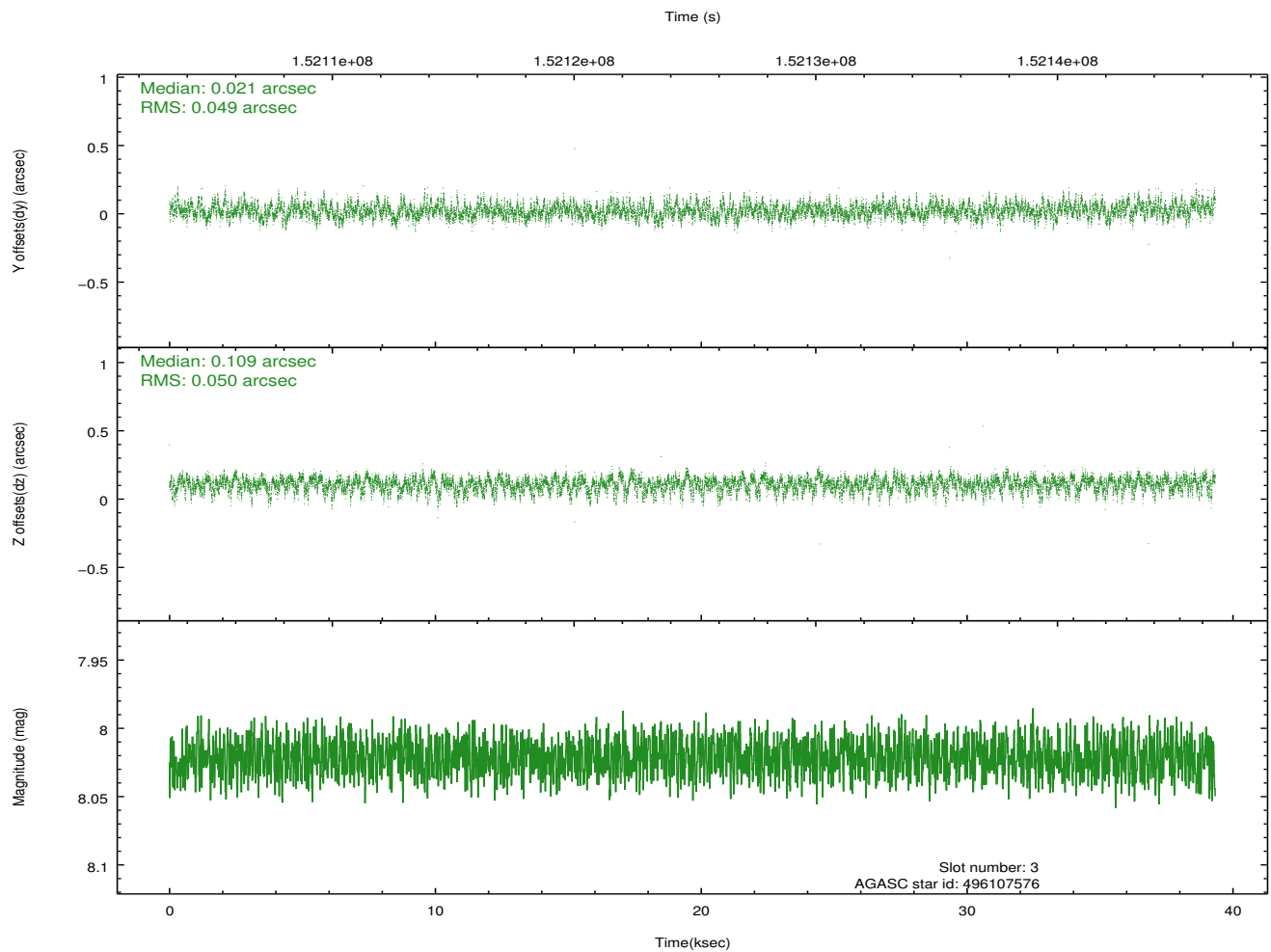
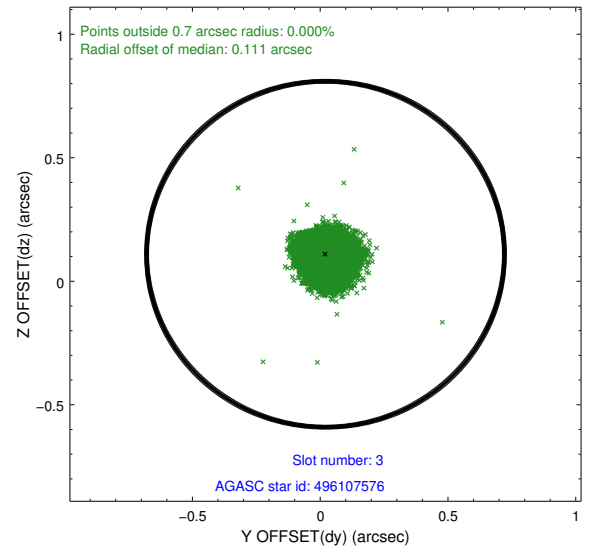
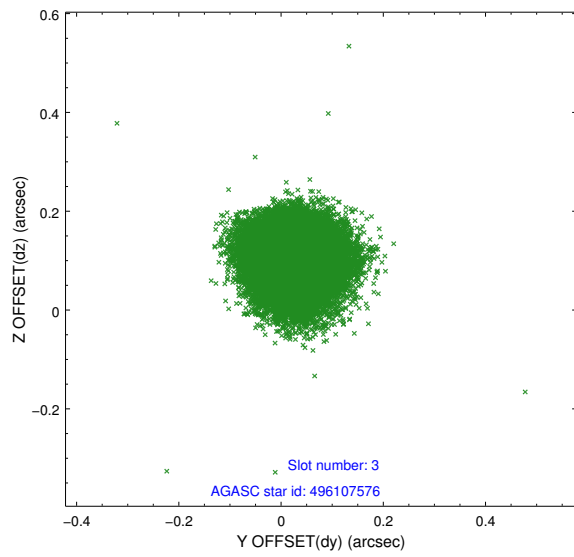


Slot Statistics

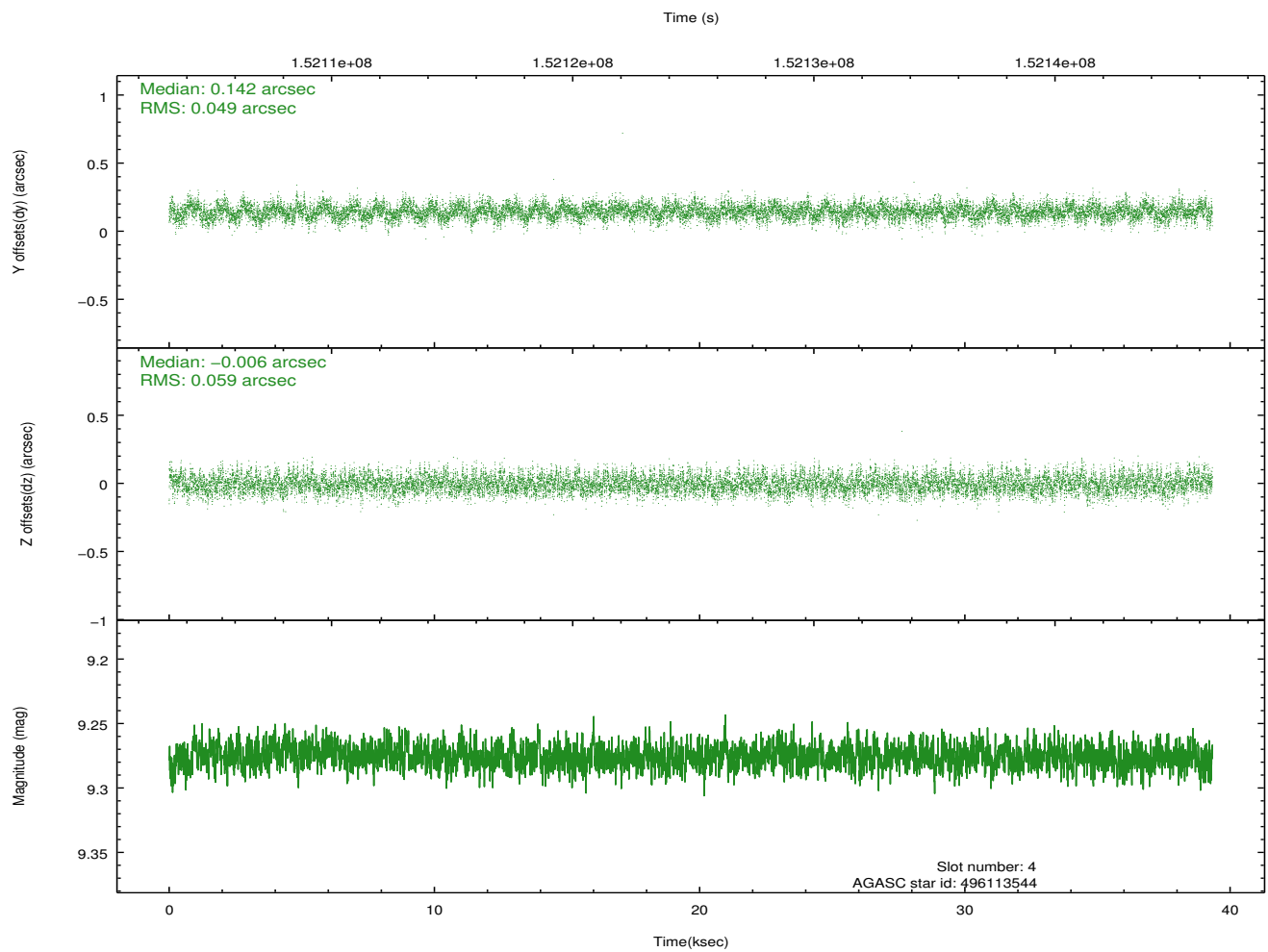
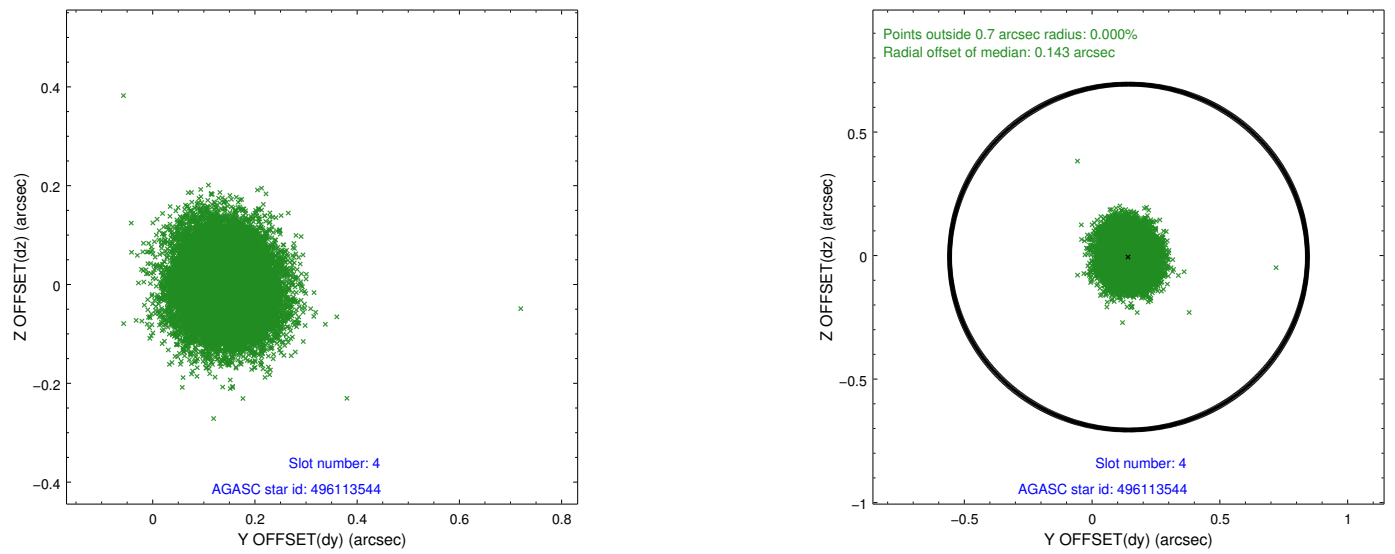
slot	status	id	mag	n_pts	med_dy	med_dz	dr1	dr2	ra	dec	mean_y	mean_z
0	FID	ACIS-S-2	7.11	9595	-0.012	-0.011	0.008	0.015	0.000000	0.000000	-755.91	-1729.28
1	FID	ACIS-S-4	7.20	9593	0.009	0.009	0.007	0.017	0.000000	0.000000	2157.39	179.19
2	FID	ACIS-S-5	7.24	9593	-0.028	0.010	0.007	0.011	0.000000	0.000000	-1808.73	172.91
3	GUIDE	496107576	8.02	19183	0.021	0.109	0.075	0.118	110.724447	55.340894	-1579.87	-614.81
4	GUIDE	496113544	9.28	19182	0.142	-0.006	0.082	0.132	111.064429	55.460313	-1167.77	-1320.41
5	GUIDE	496115632	9.22	19178	0.091	0.086	0.079	0.127	110.749817	55.481092	-1076.76	-680.56
6	GUIDE	496631856	8.98	19176	-0.184	0.183	0.071	0.117	110.477341	56.296545	1873.41	-216.25
7	GUIDE	495980392	10.10	19162	-0.075	-0.371	0.168	0.265	109.248928	56.110741	1303.83	2267.92

2.4 Star Slots

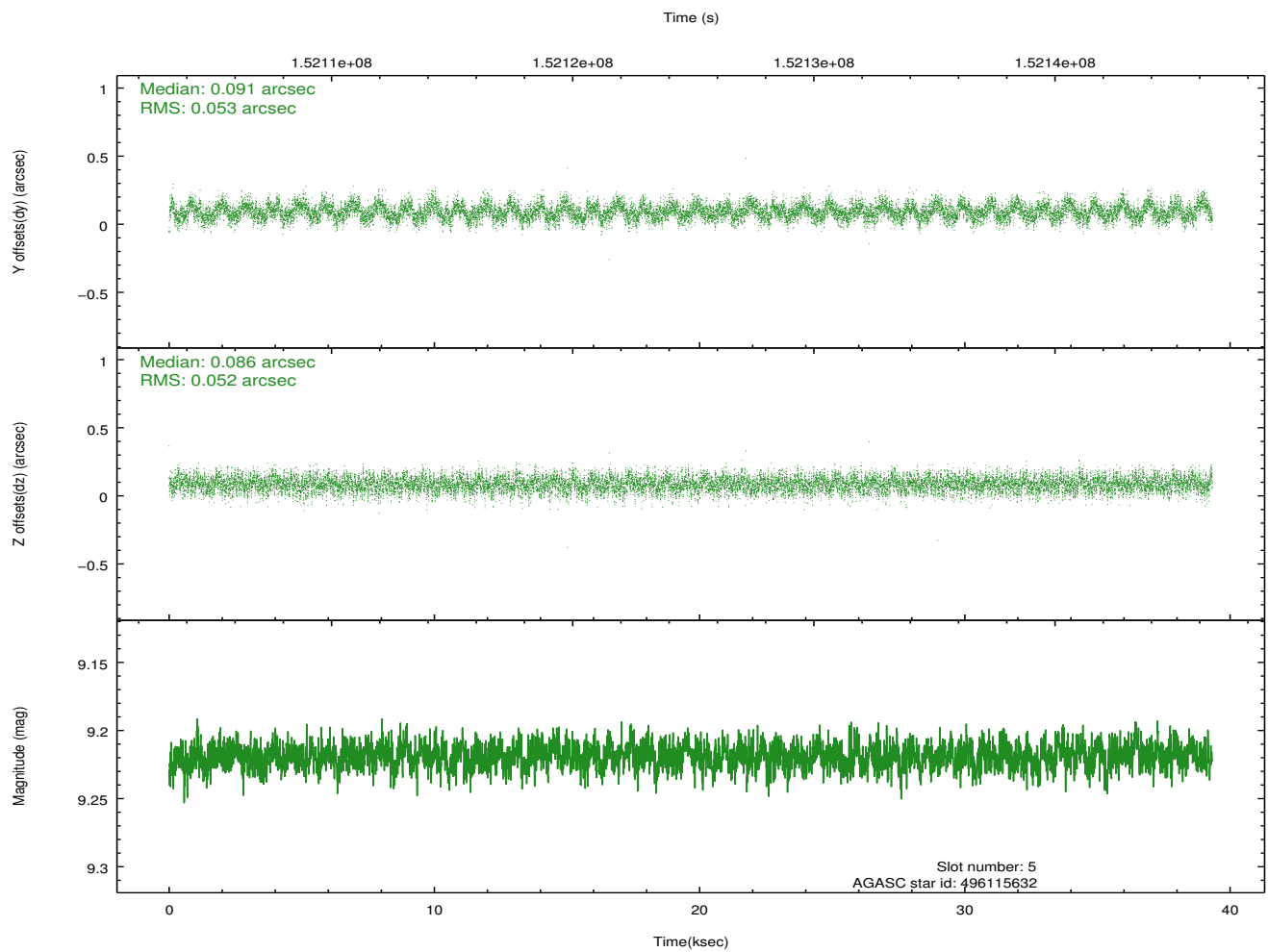
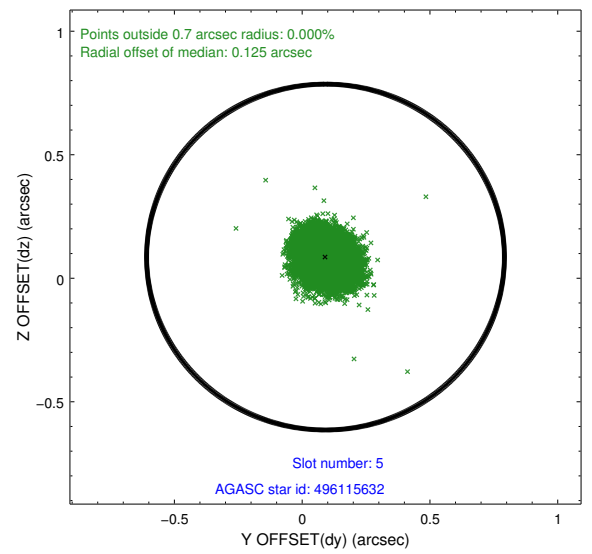
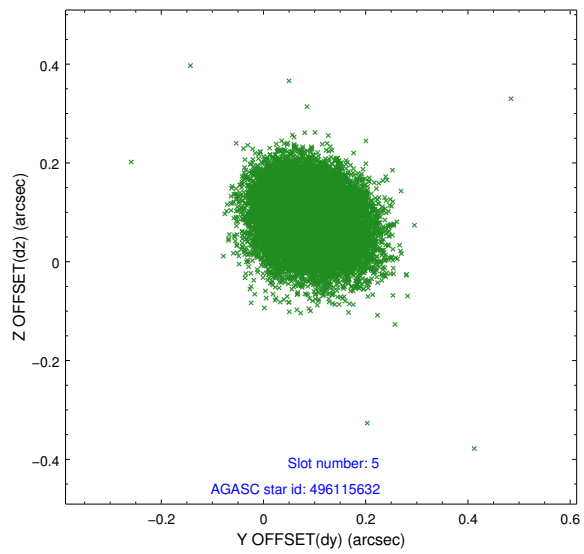
2.4.1 Slot 3



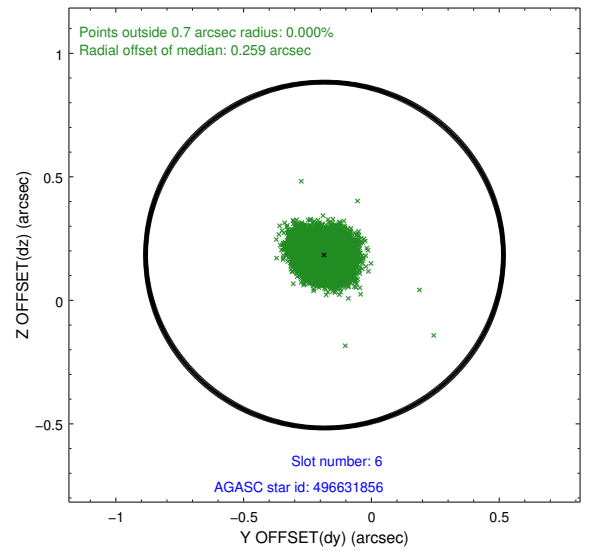
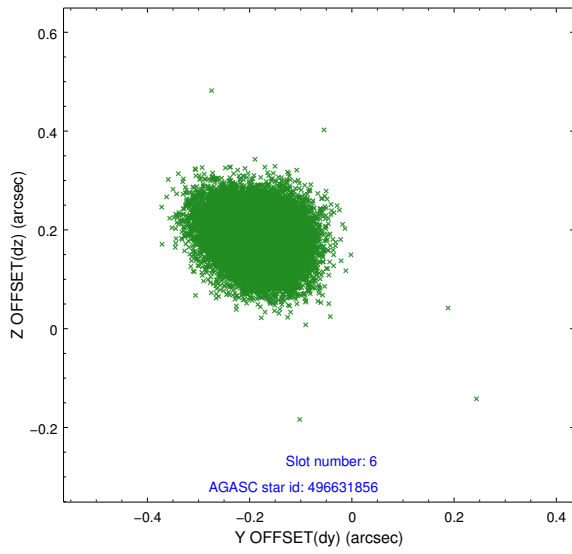
2.4.2 Slot 4



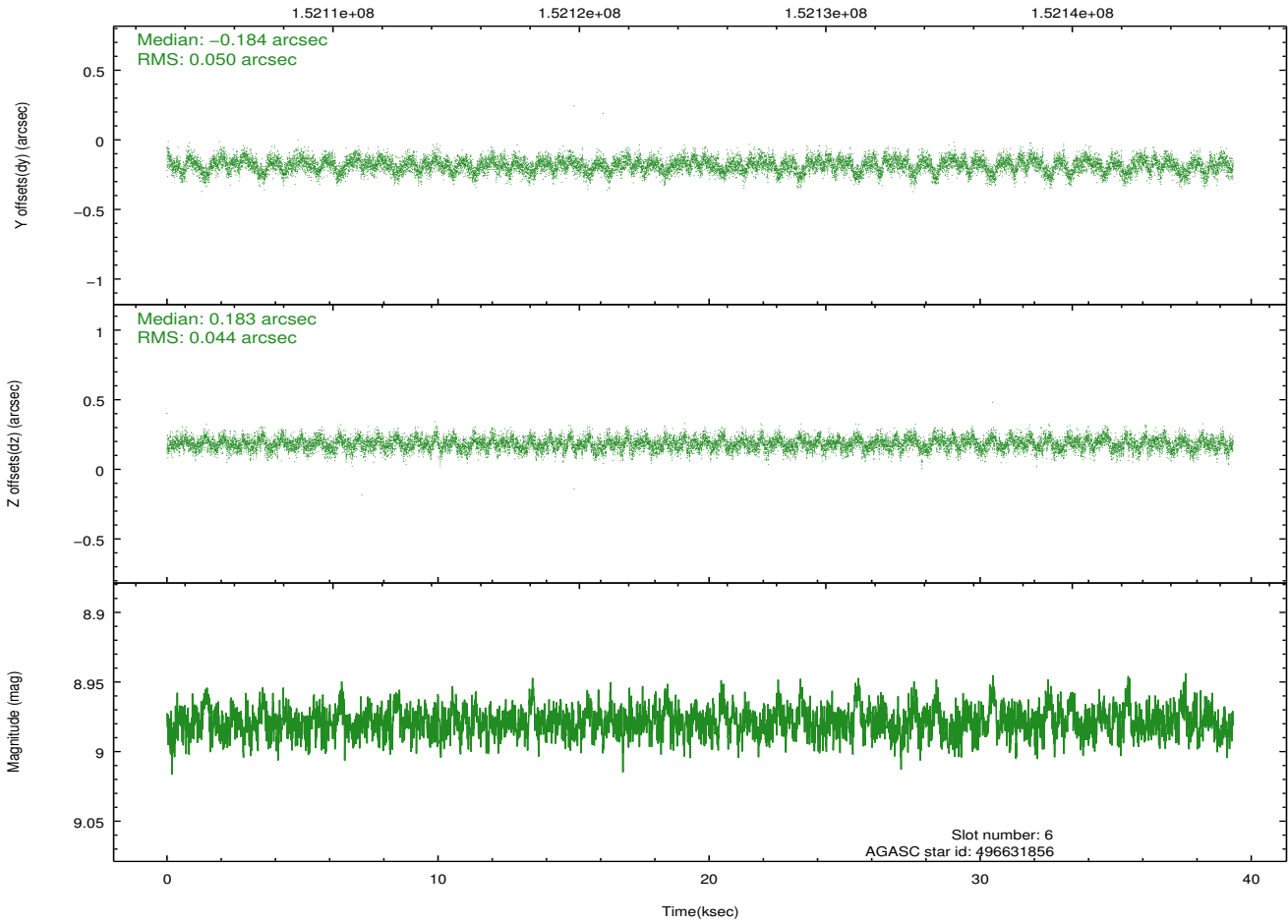
2.4.3 Slot 5



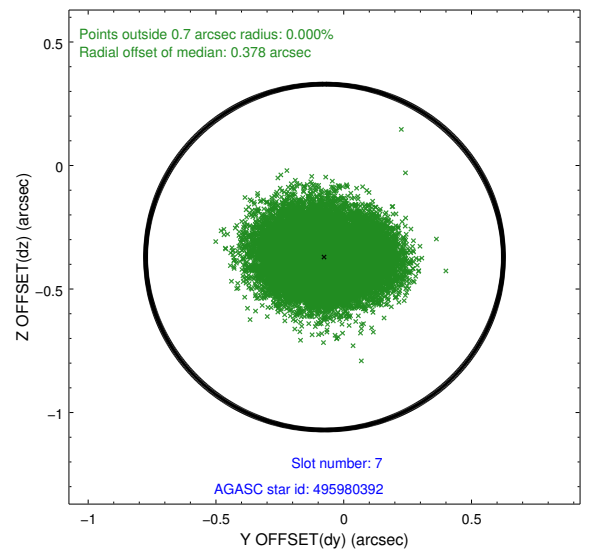
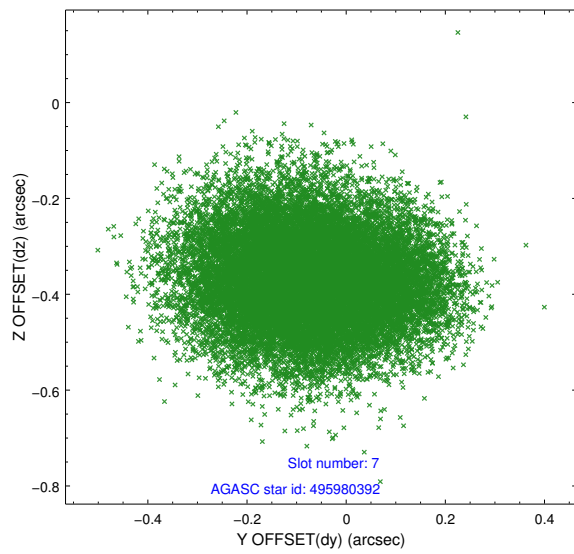
2.4.4 Slot 6



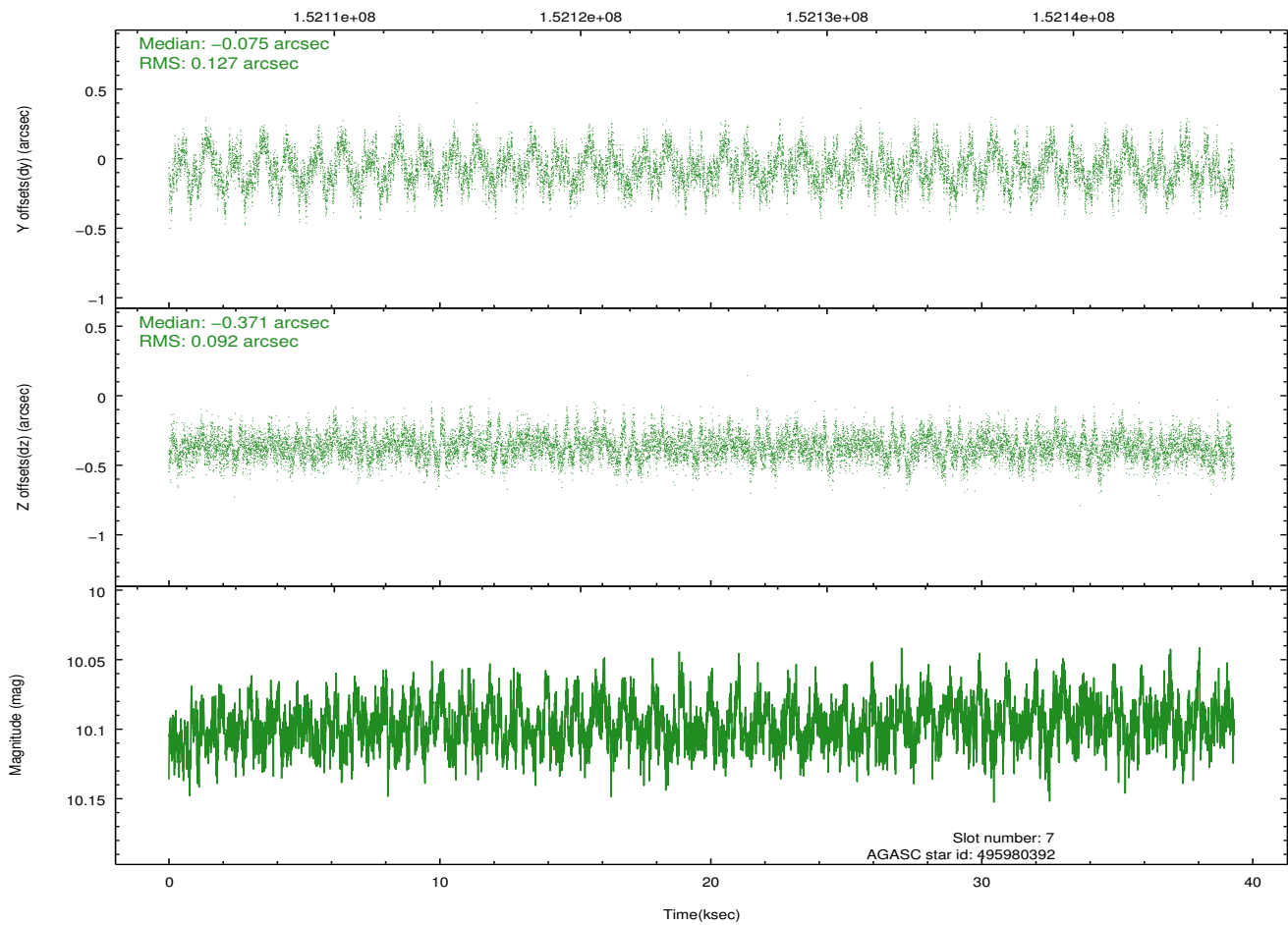
Time (s)



2.4.5 Slot 7

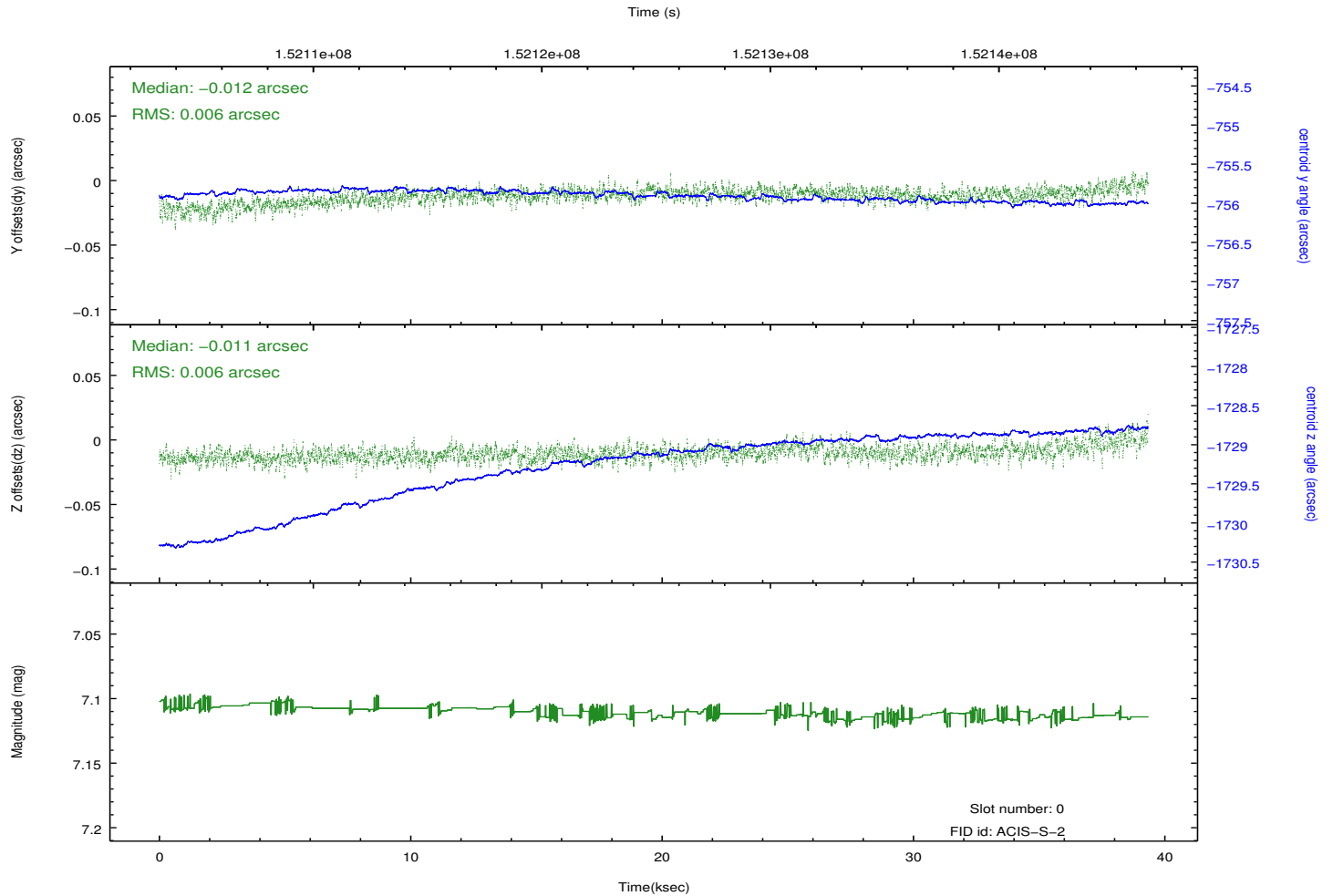
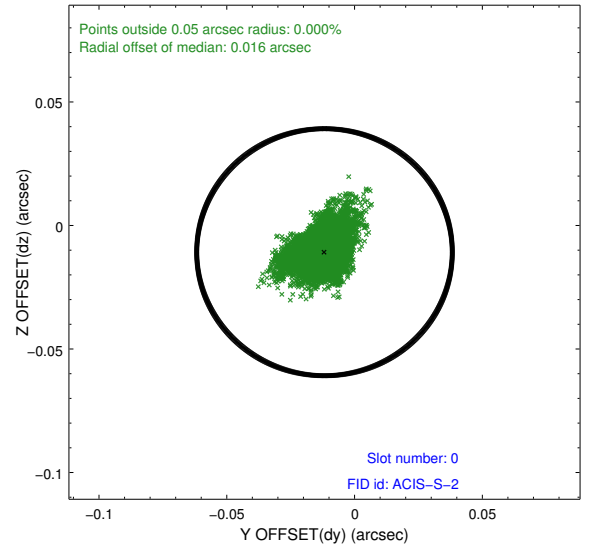
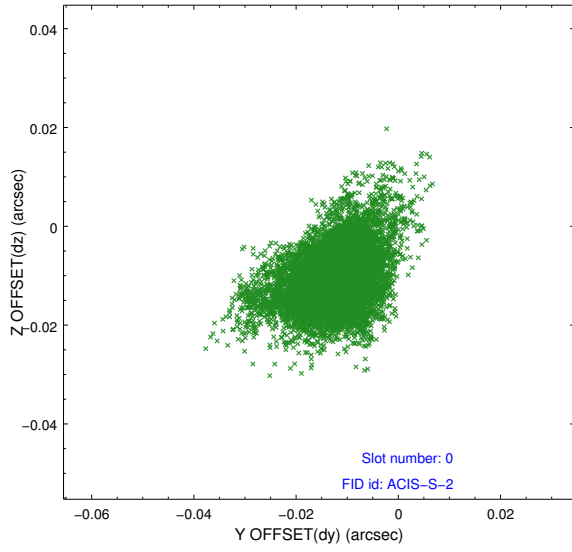


Time (s)

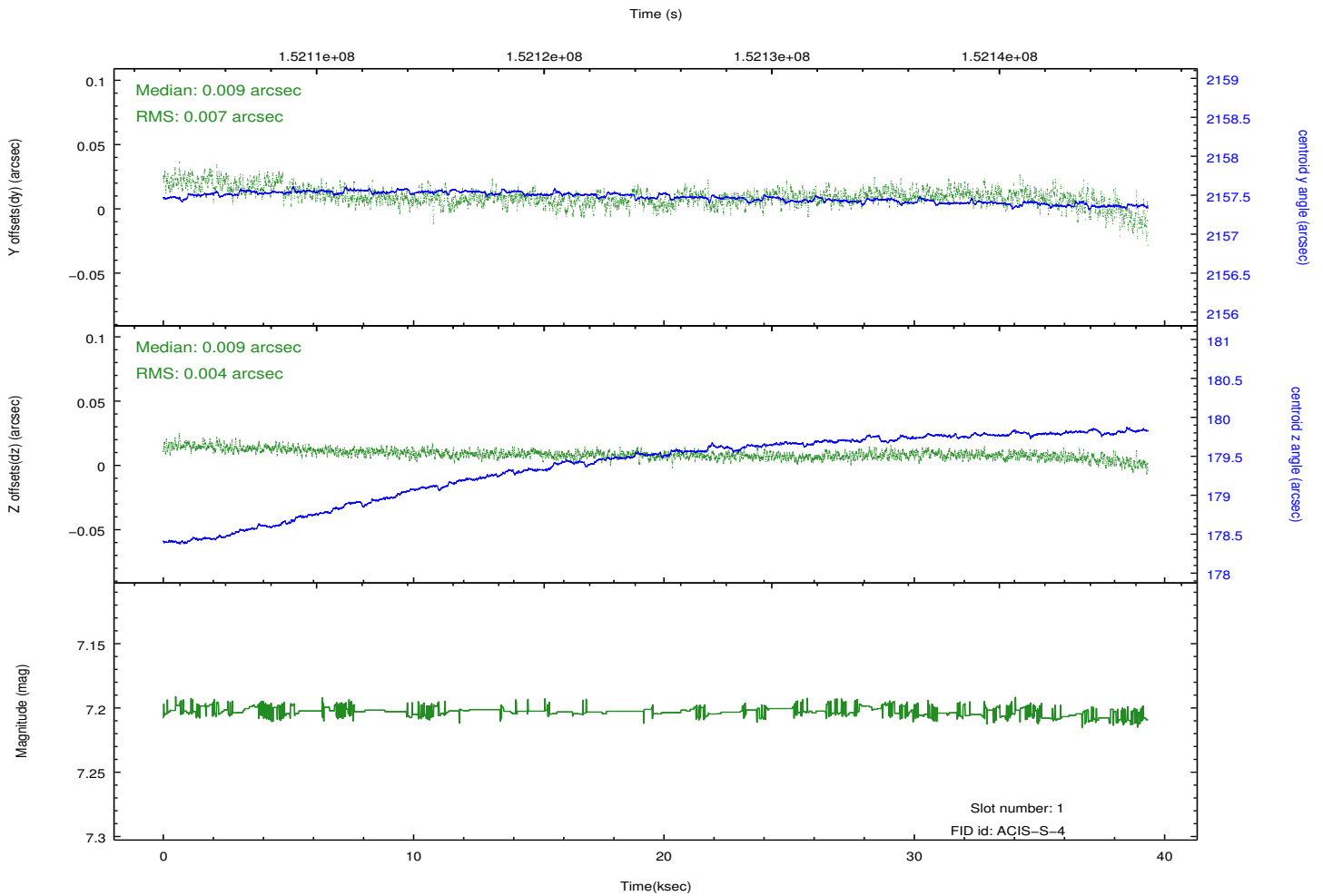
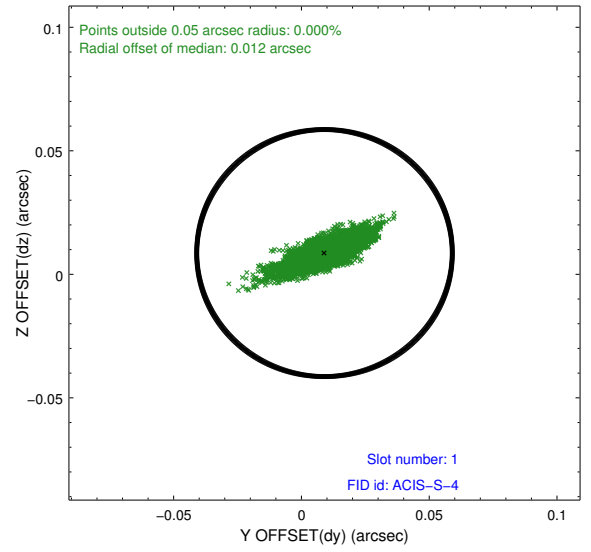
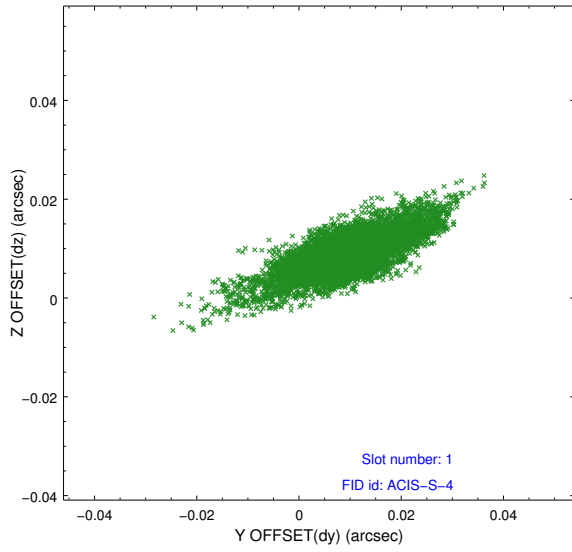


2.5 FID Slots

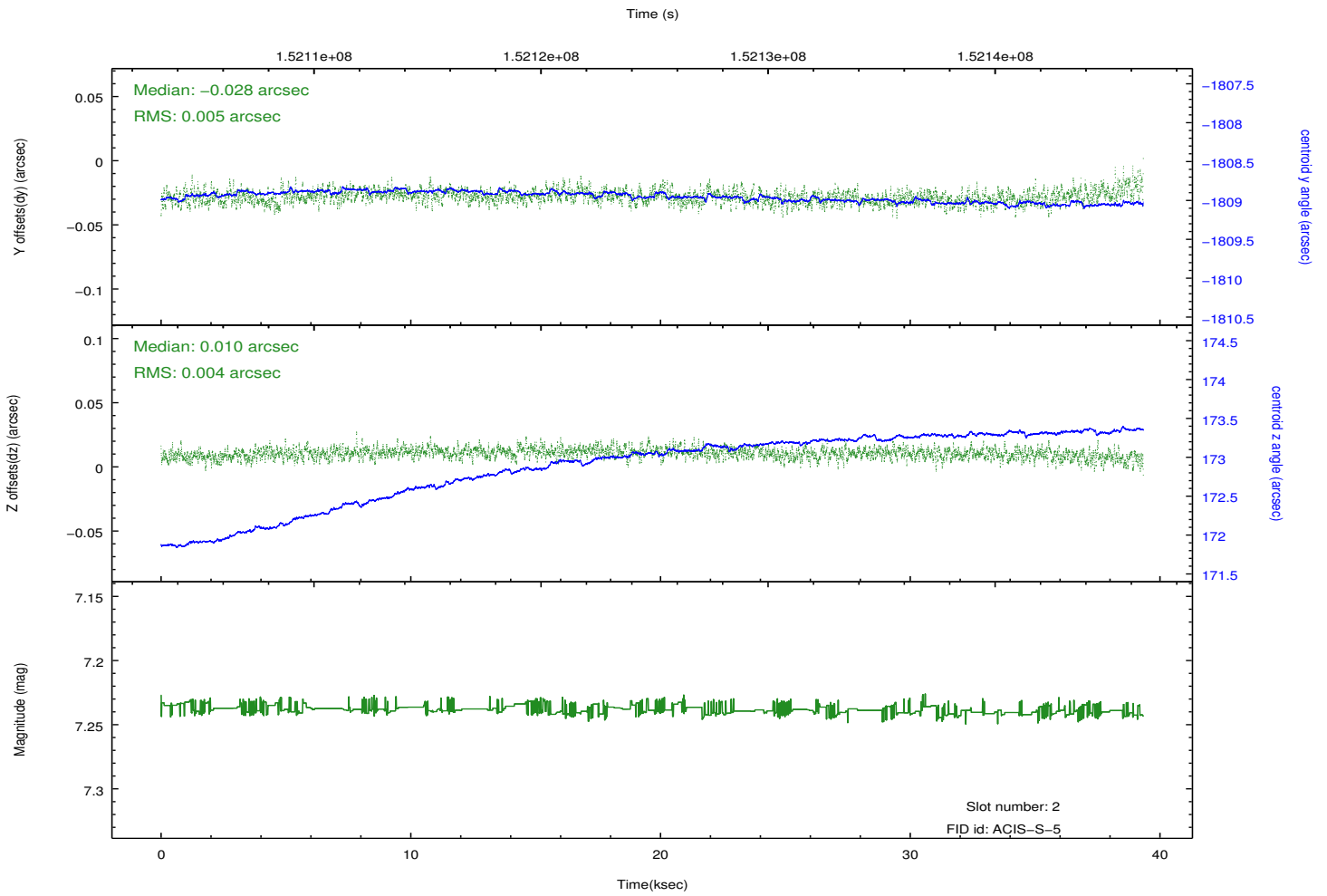
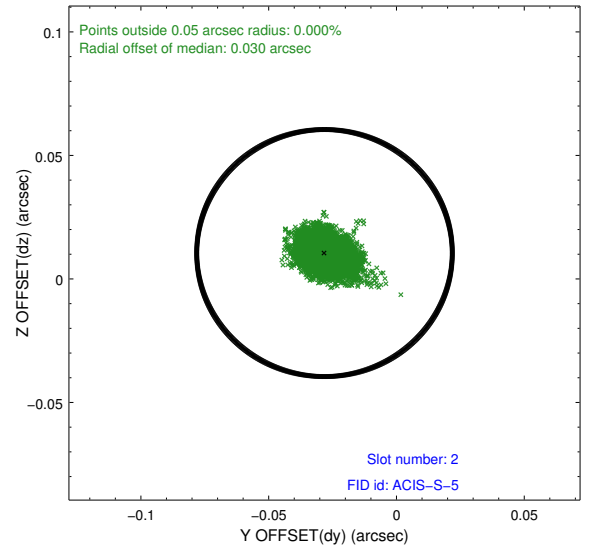
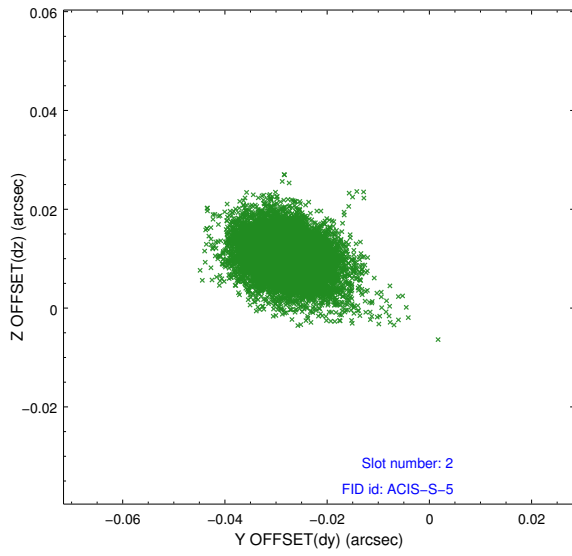
2.5.1 Slot 0



2.5.2 Slot 1



2.5.3 Slot 2



A Summary

A.1 Status

V&V Scientist	Jen Lauer
V&V Date (YYYY-MM-DD)	2012.10.25
V&V Edition	1
V&V Disposition and Status	OK
V&V Charge Time	39.103

A.2 Comments