

V&V Reference Report

L2 ASCDS Version : 8.4.5

Observation 3589 - L2 Version 4
Chandra X-Ray Center

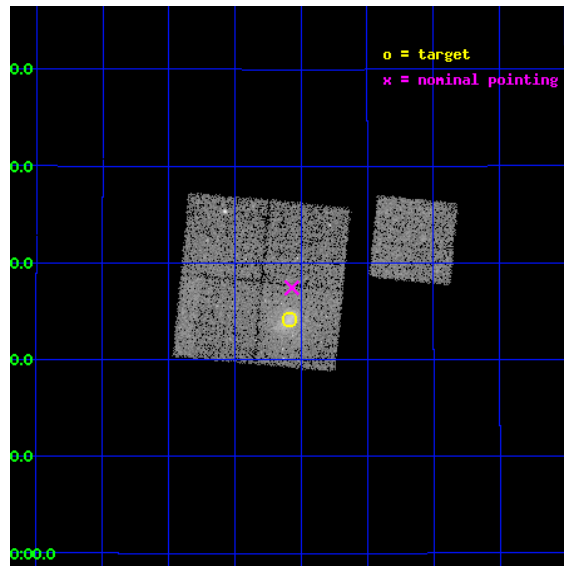
L2 Processing Date : Oct 22 2012

Contents

1	Front	2
2	OBI	3
2.1	OBI	3
2.1.1	Images	3
2.1.2	Bias	3
2.1.3	Parameters	4
2.1.4	Events	4
2.2	Compared Parameters	5
2.3	Aspect	6
2.4	Star Slots	9
2.4.1	Slot 3	9
2.4.2	Slot 4	10
2.4.3	Slot 5	11
2.4.4	Slot 6	12
2.4.5	Slot 7	13
2.5	FID Slots	14
2.5.1	Slot 0	14
2.5.2	Slot 1	15
2.5.3	Slot 2	16
A	Summary	17
A.1	Status	17
A.2	Comments	17

1 Front

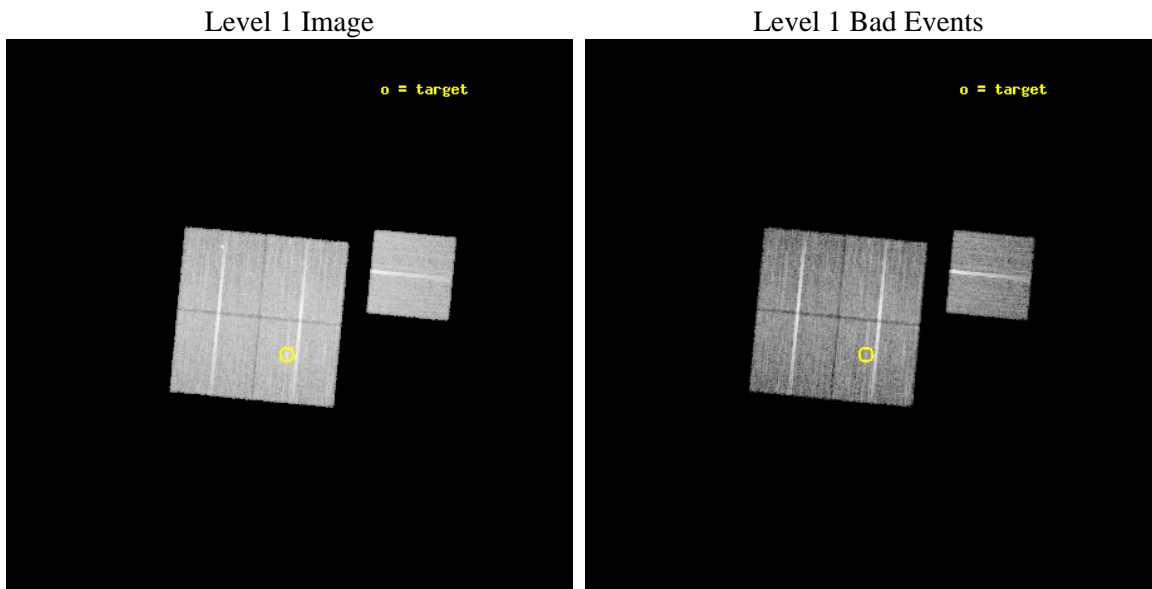
seq_num	800310	Sequence number
obs_id	3589	Observation id
title	X-RAY/SZ DETERMINATION OF COSMOLOGICAL PARAMETERS	Proposal title
observer	DR. LEON VANSPEYBROECK	Principal investigator
object	MACS-J1149.5+2223	Source name
dtycycle	0	
cycle	P	events from which exps? Prim/Second/Both
ra_targ	177.395833	Observer's specified target RA [deg]
dec_targ	22.403	Observer's specified target Dec [deg]
ra_nom	177.3923456822	Nominal RA [deg]
dec_nom	22.457185773275	Nominal Dec [deg]
roll_nom	95.493824805575	Nominal Roll [deg]
revision	4	Processing version of data
ontime	20313.103484422	Sum of GTIs [s]
livetime	20047.697833109	Livetime [s]
ontime0	20309.839374185	Sum of GTIs [s]
ontime1	20316.162384659	Sum of GTIs [s]
ontime2	20309.921434373	Sum of GTIs [s]
ontime3	20313.103484422	Sum of GTIs [s]
ontime6	20316.080304652	Sum of GTIs [s]
l2events	52657	Number of level 2 events



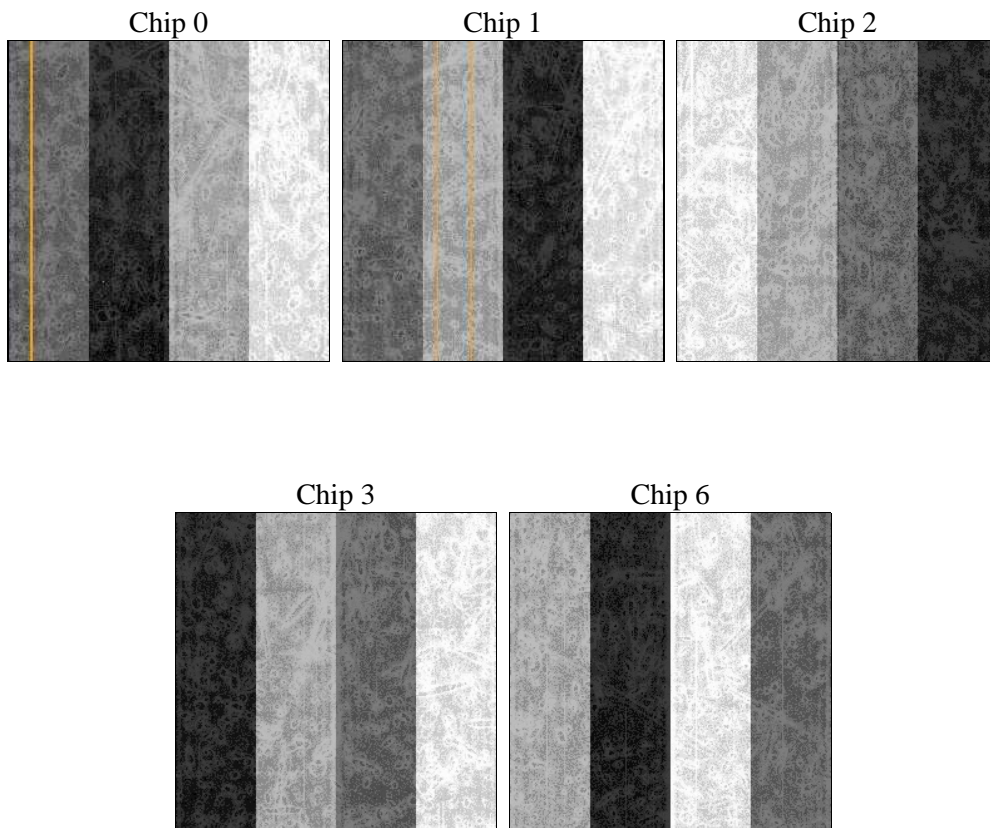
2 OBI

2.1 OBI

2.1.1 Images



2.1.2 Bias



2.1.3 Parameters

obi_num	0	Obi number	sched_exp_time	20200.000000	[s] Scheduled observation exposure time
ascdsver	8.4.5	Processing system revision	ontime	20313.103484422	Sum of GTIs [s]
caldsver	4.5.2	 	ontime0	20309.839374185	Sum of GTIs [s]
date	2012-10-22T06:02:25	Date and time of file creation	ontime1	20316.162384659	Sum of GTIs [s]
revision	4	Processing version of data	ontime2	20309.921434373	Sum of GTIs [s]
			ontime3	20313.103484422	Sum of GTIs [s]
			ontime6	20316.080304652	Sum of GTIs [s]
			l1events	568188	Number of level 1 events

2.1.4 Events

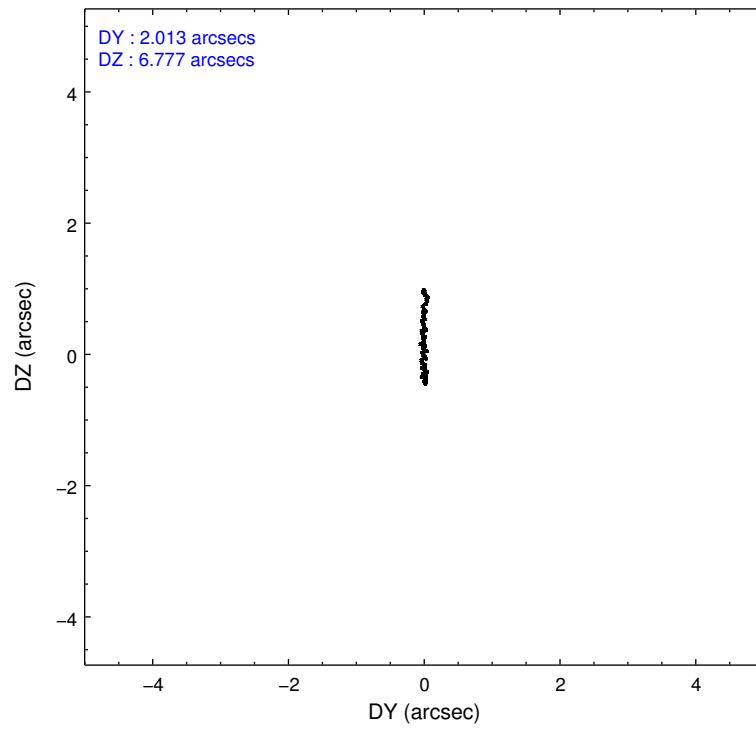
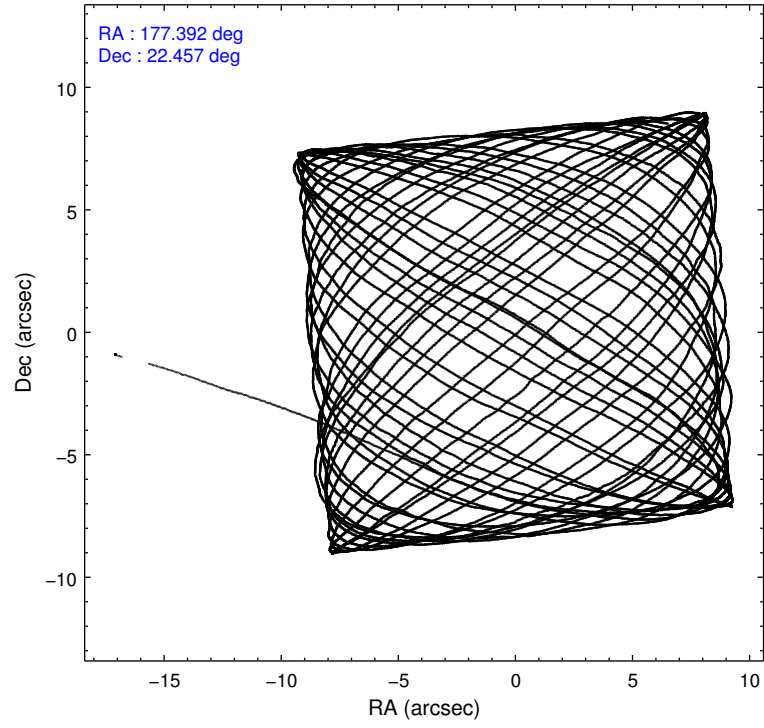
	ccd 0	ccd 1	ccd 2	ccd 3	ccd 6
level 1 events	105826	106459	122198	121477	112228
rejected events	94490	94121	111278	105109	100852
rejected %	89%	88%	91%	86%	89%

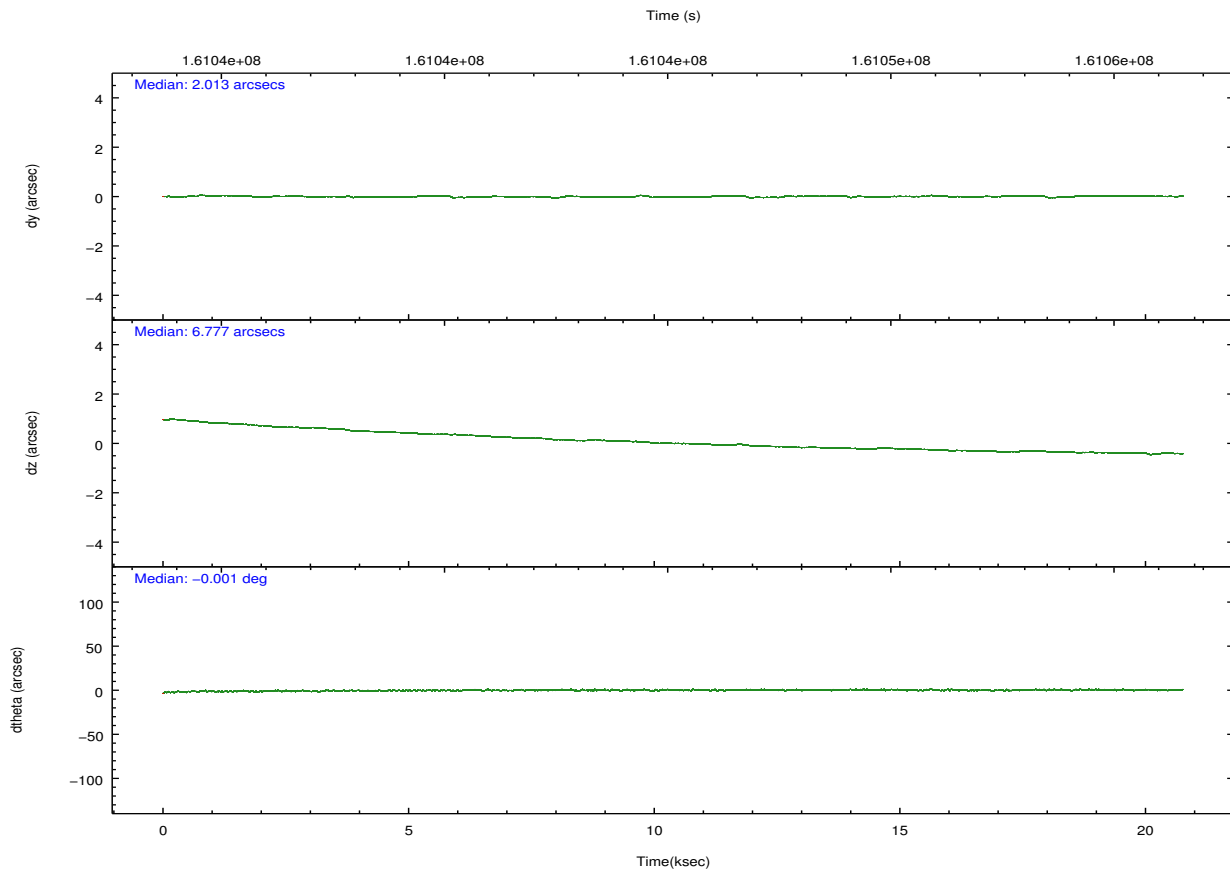
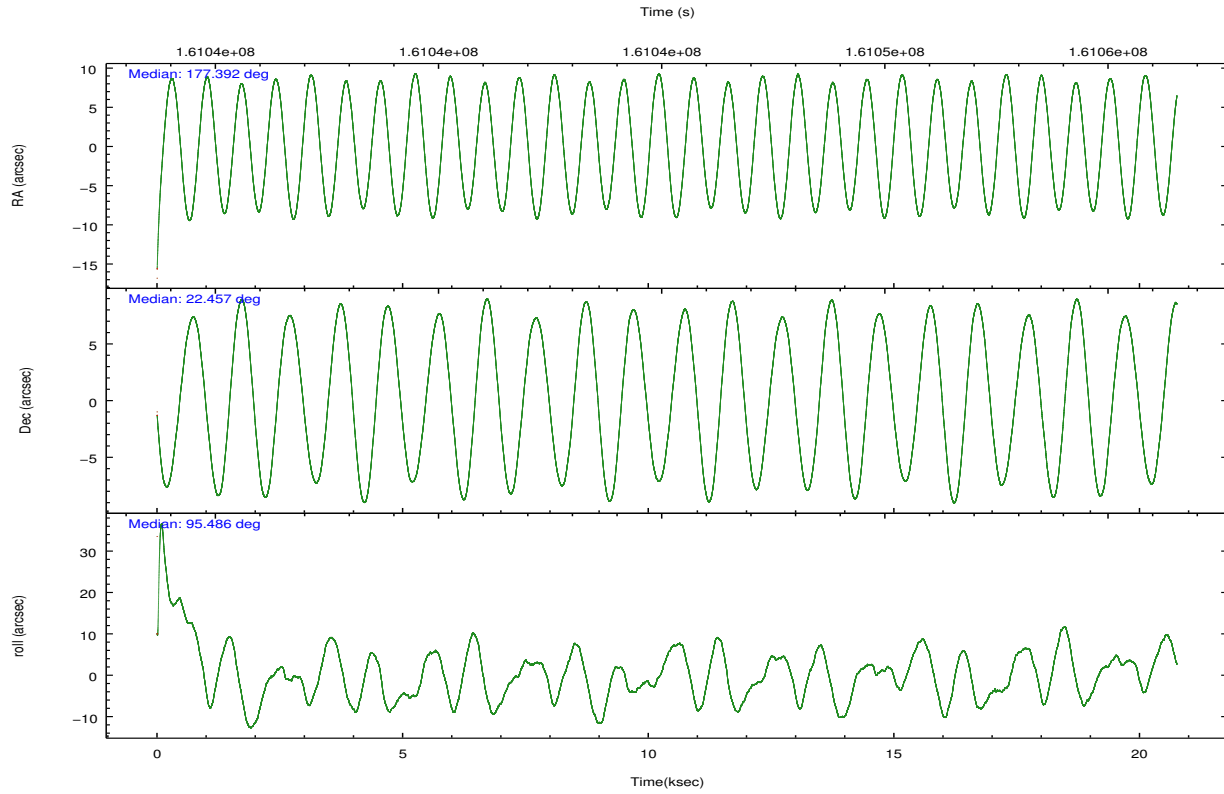
	ccd 0	ccd 1	ccd 2	ccd 3	ccd 6
grade 0 events	4257	4543	4052	8653	4163
	4%	4%	3%	7%	3%
grade 1 events	53	50	48	80	43
	0%	0%	0%	0%	0%
grade 2 events	2487	2609	2456	2772	2345
	2%	2%	2%	2%	2%
grade 3 events	1283	1427	1243	1406	1257
	1%	1%	1%	1%	1%
grade 4 events	1232	1402	1203	1376	1275
	1%	1%	0%	1%	1%
grade 5 events	3857	4035	3698	4258	4272
	3%	3%	3%	3%	3%
grade 6 events	2080	2363	1970	2172	2338
	1%	2%	1%	1%	2%
grade 7 events	90577	90030	107528	100760	96535
	85%	84%	87%	82%	86%

2.2 Compared Parameters

Parameter	Planned	Actual	Parameter	Planned	Actual
Instrument	ACIS	ACIS	Obspar format version number	7	7
Detector	ACIS-01236	ACIS-01236	Obspar file type	PREDICTED	ACTUAL
Grating	NONE	NONE	Obspar update status	NONE	UPDATED
Data mode	VFAINT	VFAINT	Number of optional ACIS chips dropped	0	0
Observation mode	POINTING	POINTING	On-chip summing requested	N	N
[deg] Pointing RA	177.409655	177.392345682201	Subarray requested	NONE	NONE
[deg] Pointing Dec	22.434971	22.45718577327525	Alternating exposures requested	N	N
[deg] Pointing Roll	95.278554	95.49382480557536	[s] Primary exposure time	0.000000	3.1
[mm] SIM focus pos	-0.782348	-0.7809083437167272			
[mm] SIM defocus	0	0.001439871863259334			
[mm] SIM translation stage pos	-225.840463	-225.8433433320239			
[mm] SIM translation stage offset	-7.752	-7.749109670905796			
[s] Observation start time (MET)	161035298.184000	161034154.60414			
Observation start date	2003-02-07T20:00:34	2003-02-07T19:42:34			
[s] Observation end time (MET)	161055498.184000	161056157.76757			
Observation end date	2003-02-08T01:37:14	2003-02-08T01:49:17			
Read mode	TIMED	TIMED			

2.3 Aspect





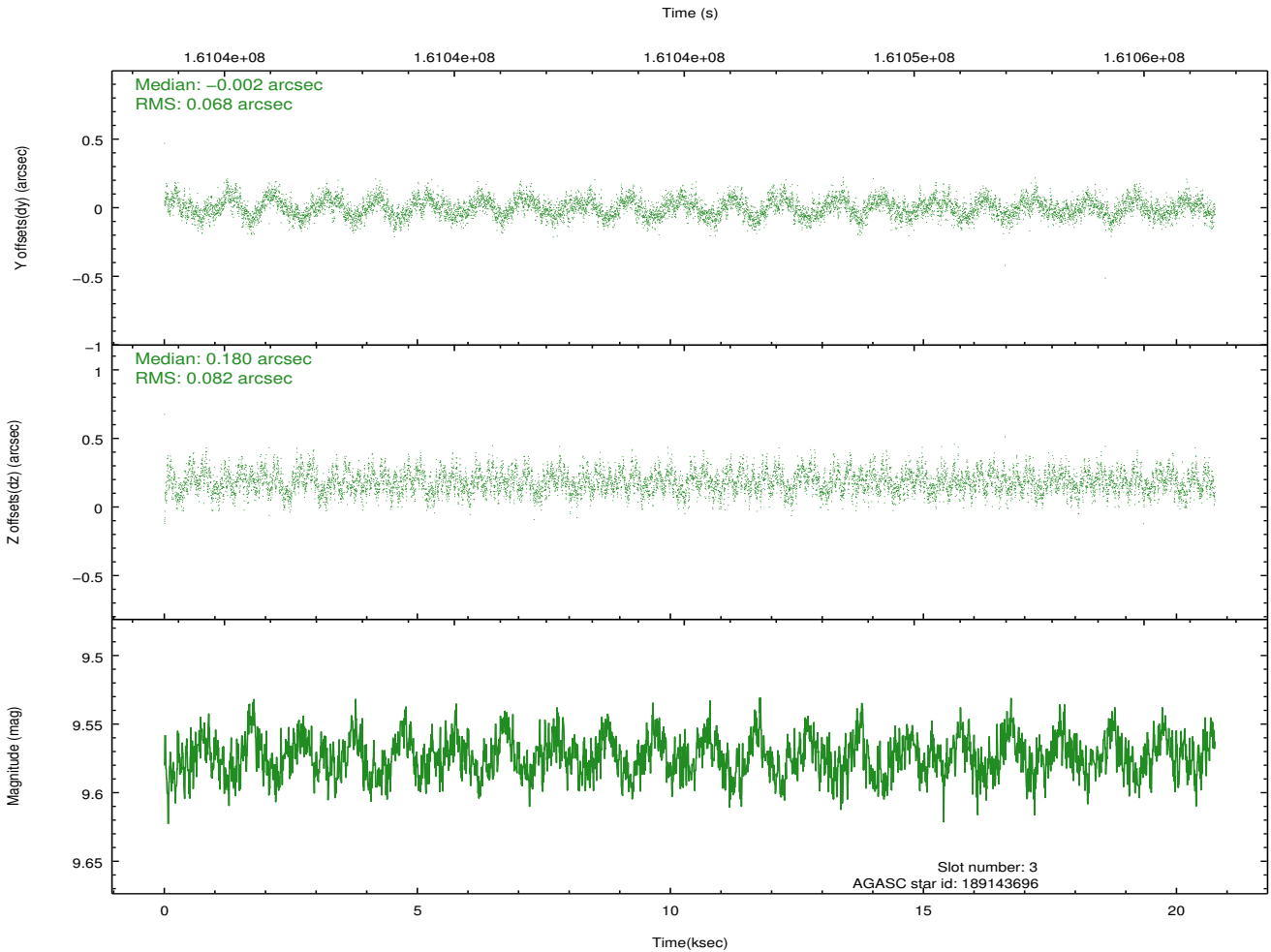
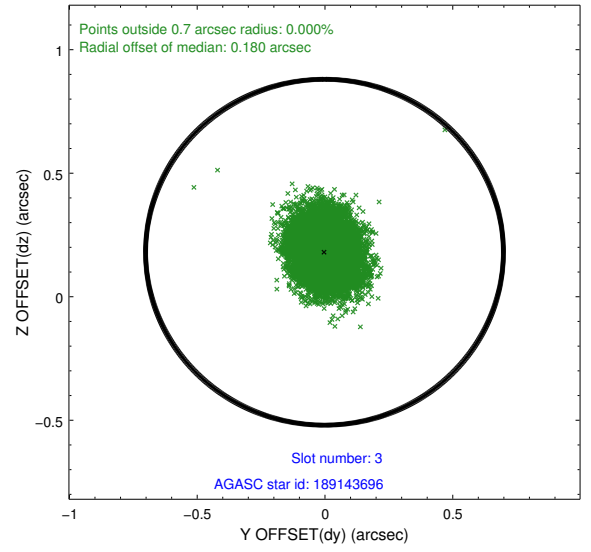
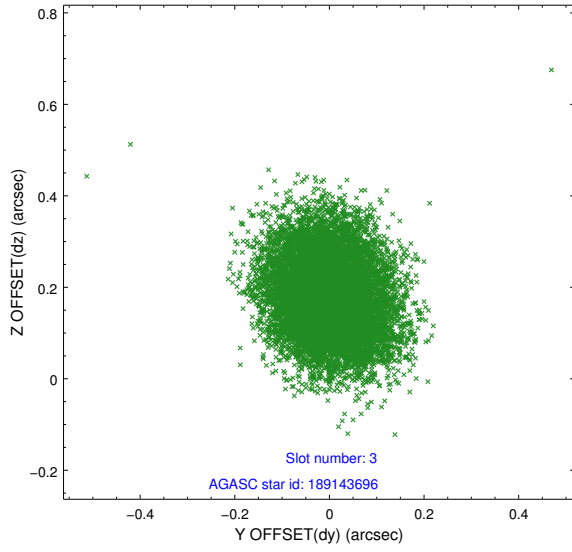
Slot Statistics

slot	status	id	mag	n_pts	med_dy	med_dz	dr1	dr2	ra	dec	mean_y	mean_z
0	FID	ACIS-I-1	7.23	5064	0.081	-0.050	0.011	0.025	0.000000	0.000000	937.73	-989.40
1	FID	ACIS-I-5	7.23	5063	-0.157	0.098	0.007	0.014	0.000000	0.000000	-1810.49	908.15
2	FID	ACIS-I-6	7.27	5064	-0.014	0.022	0.010	0.016	0.000000	0.000000	403.02	1552.75
3	GUIDE	189143696	9.57	10121	-0.002	0.180	0.114	0.179	178.041363	22.456622	-110.81	-2099.89
4	GUIDE	189147384	9.74	10038	0.045	0.156	0.124	0.193	177.889709	22.114499	-1293.03	-1488.46
5	GUIDE	189148592	9.37	10059	0.098	-0.110	0.090	0.150	177.434258	22.088632	-1248.86	32.77
6	GUIDE	260186640	9.83	10103	-0.105	-0.071	0.178	0.279	176.898277	22.985190	2131.09	1505.58
7	GUIDE	189148400	9.59	10114	-0.026	-0.157	0.105	0.168	176.690054	22.445682	264.68	2380.31

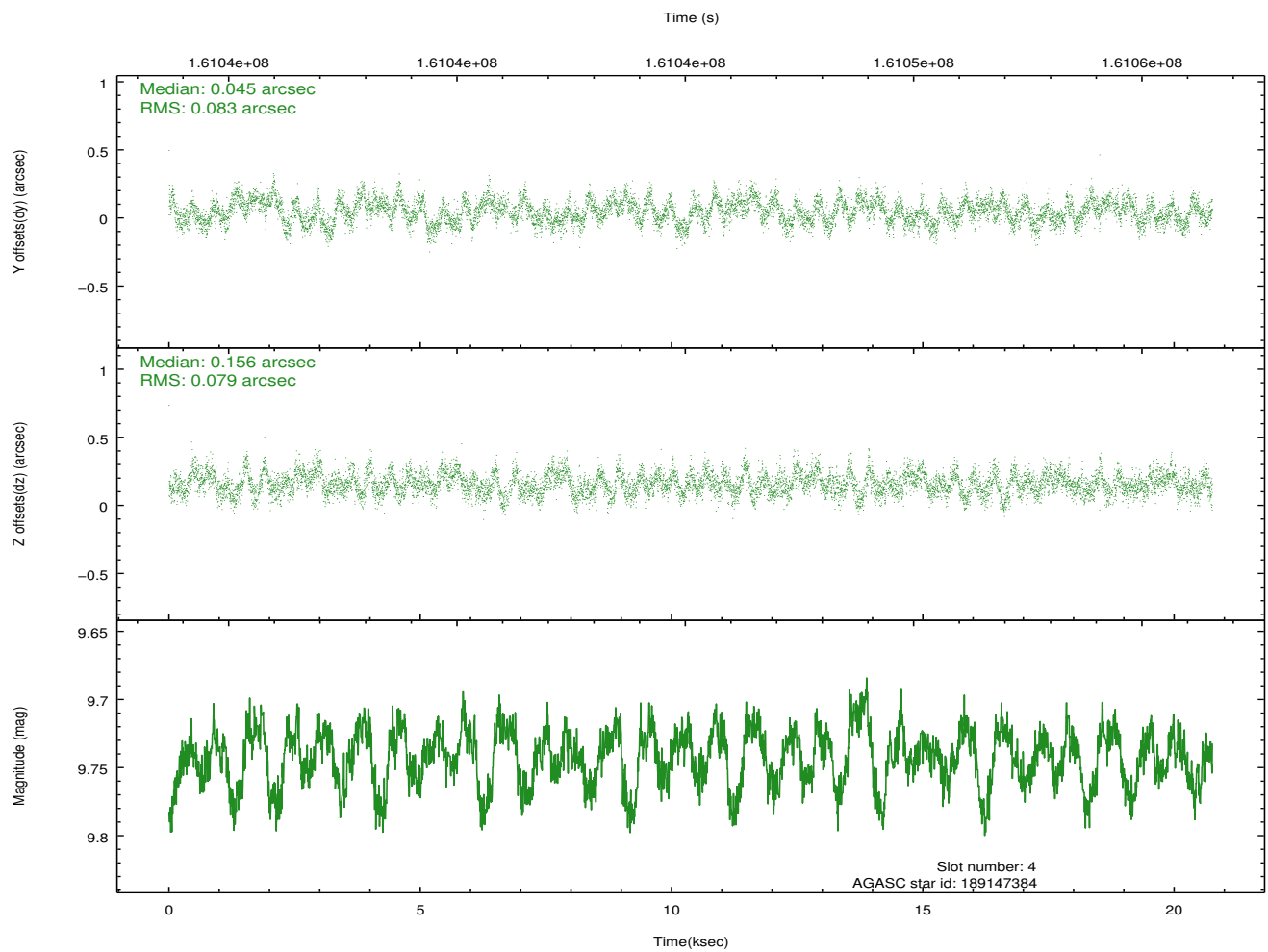
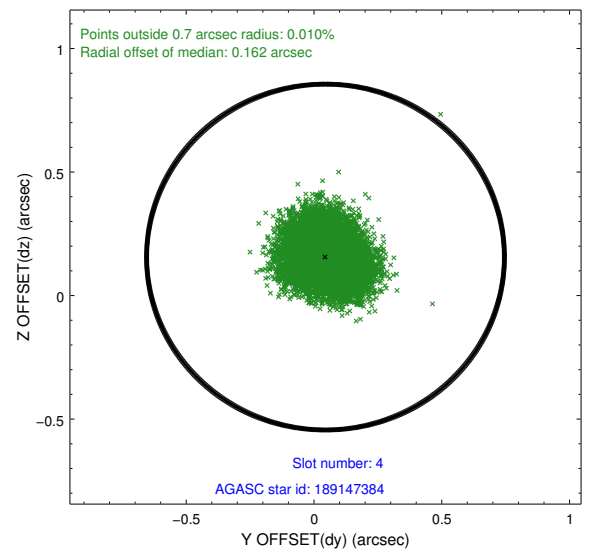
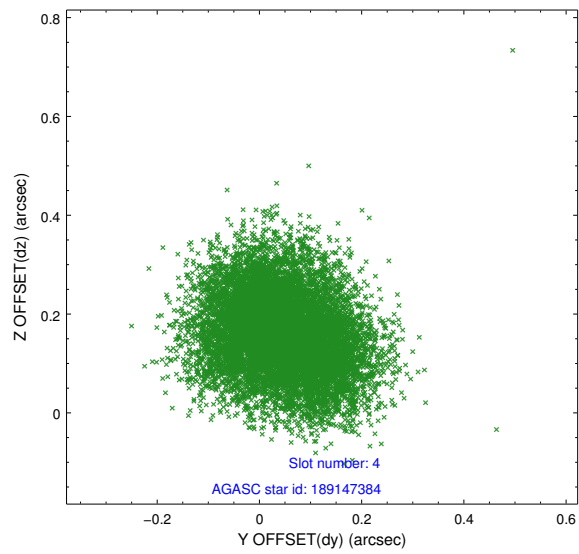
∞

2.4 Star Slots

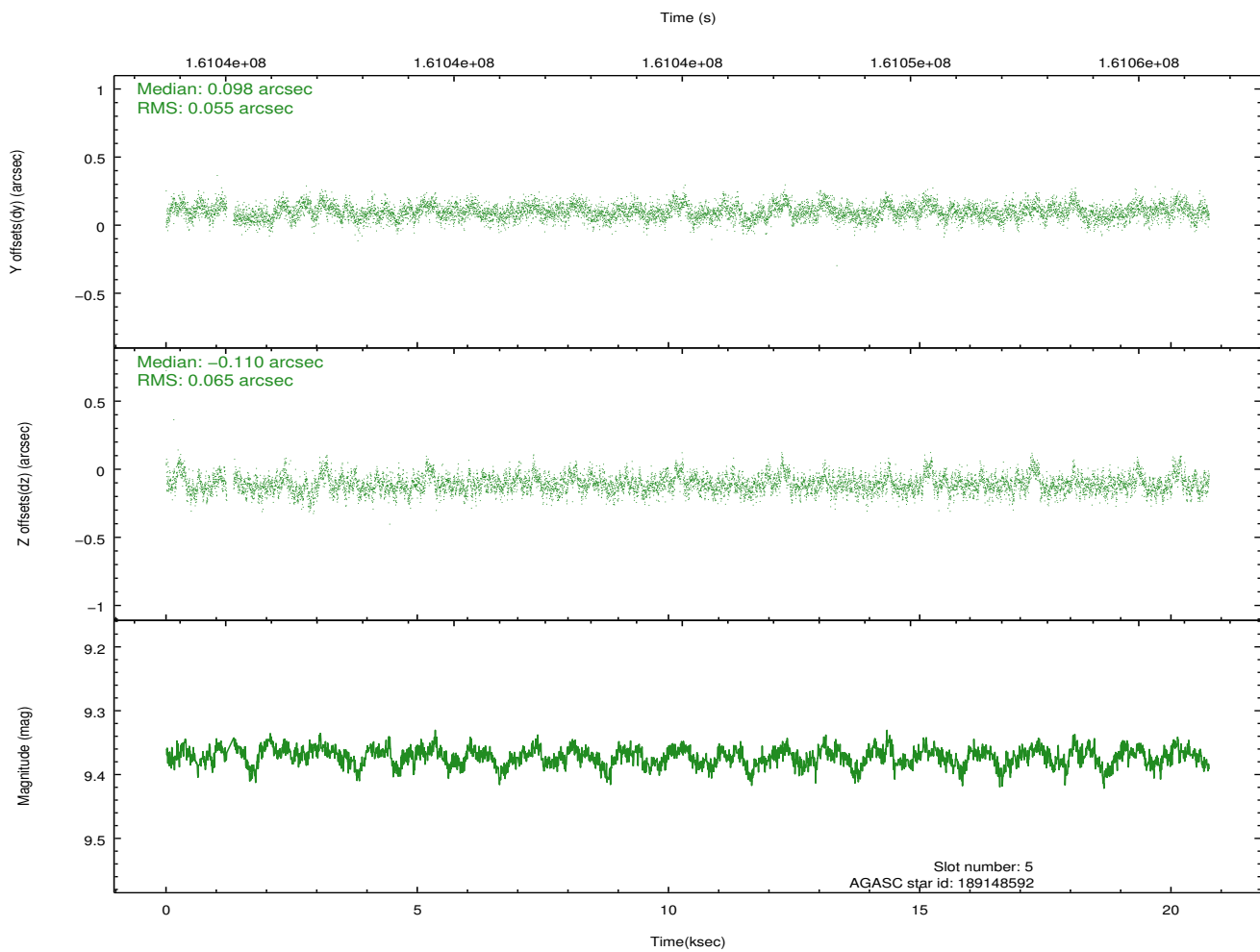
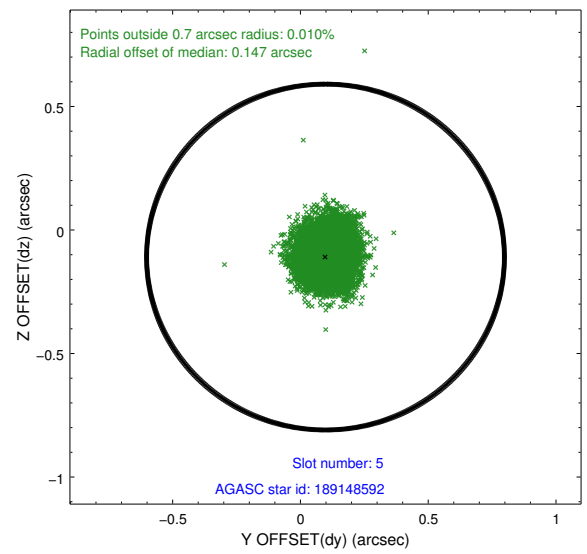
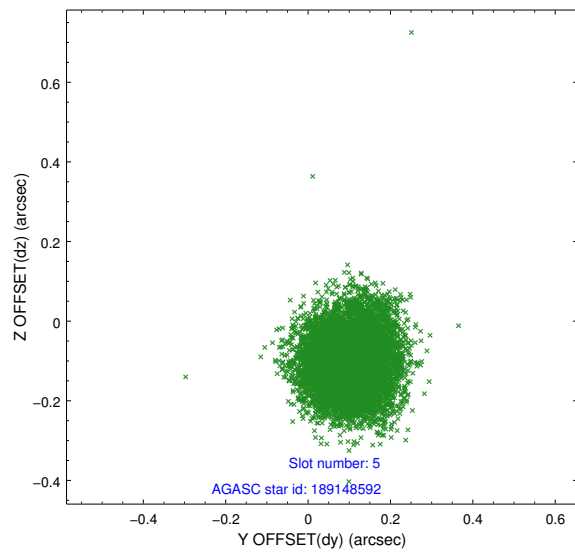
2.4.1 Slot 3



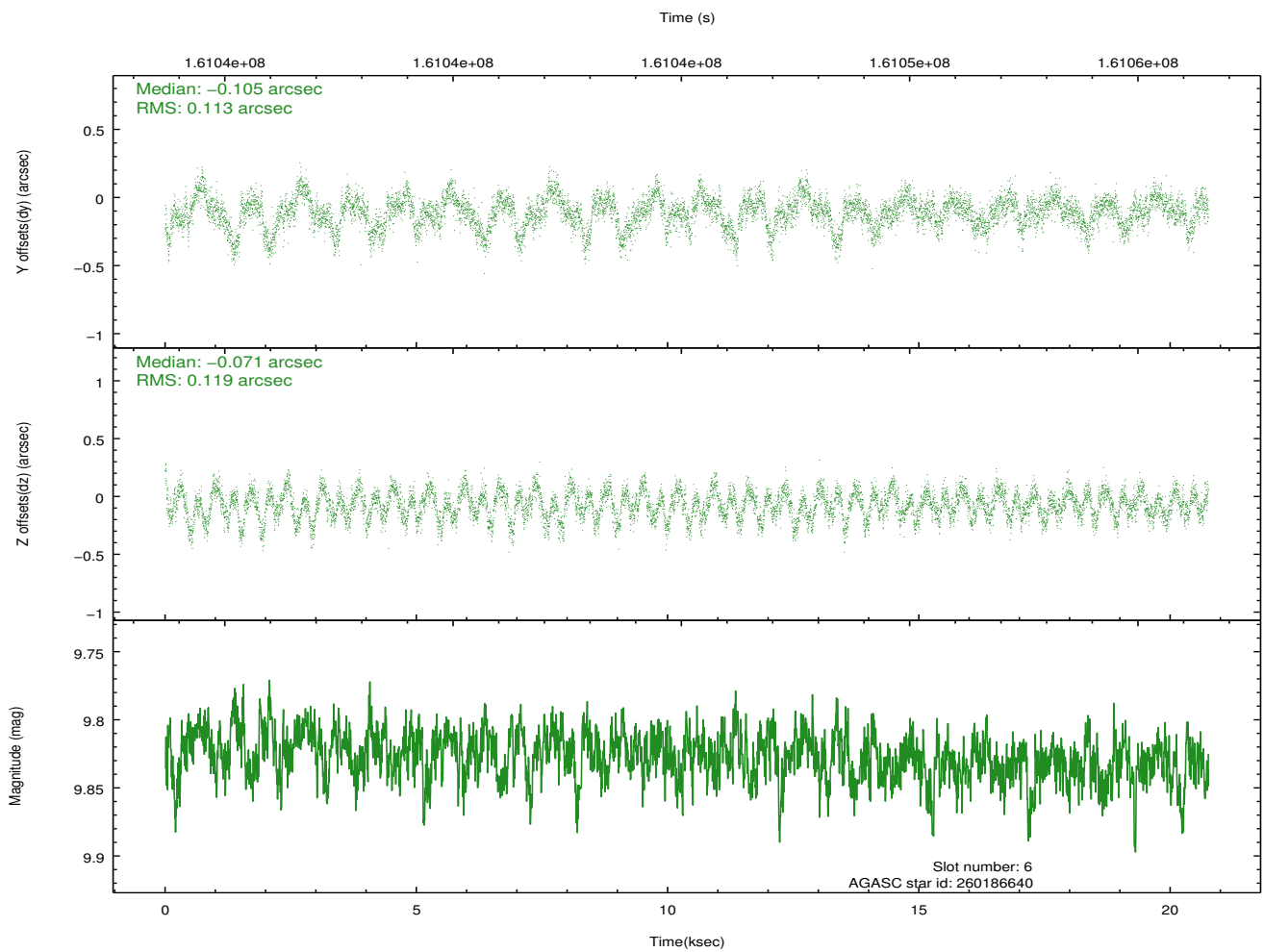
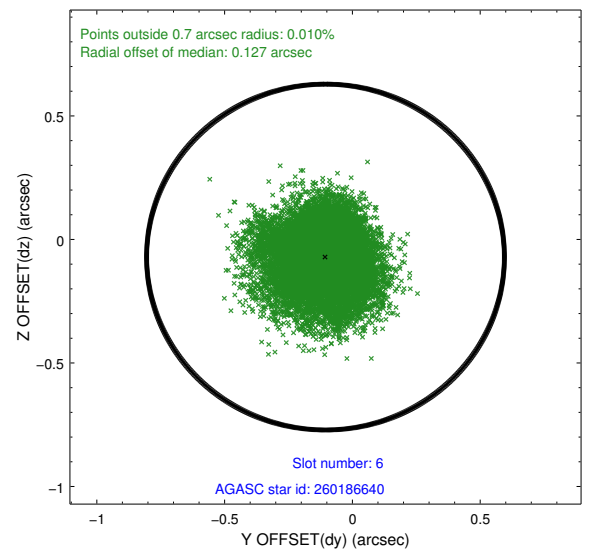
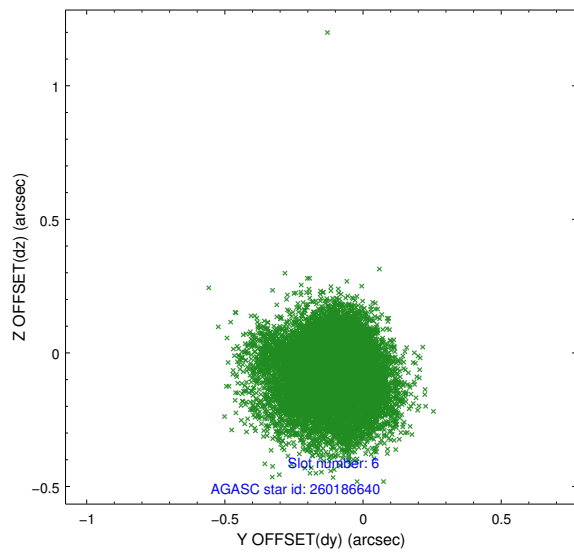
2.4.2 Slot 4



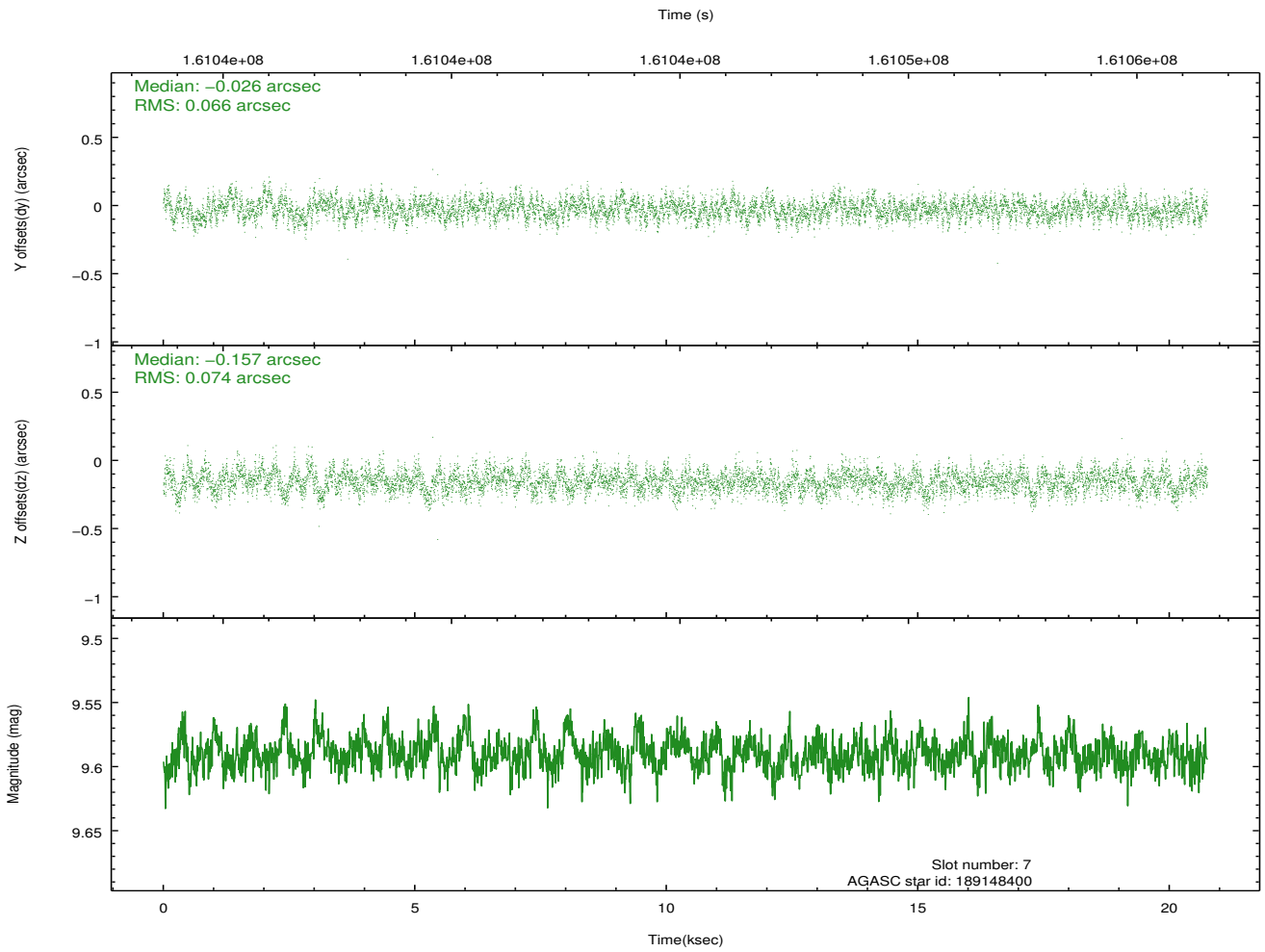
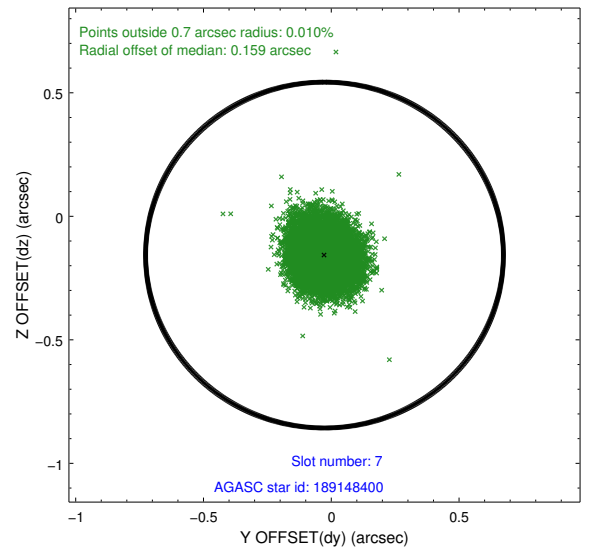
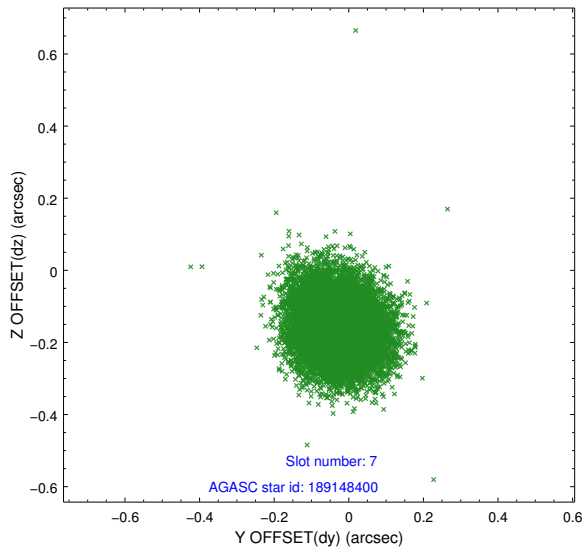
2.4.3 Slot 5



2.4.4 Slot 6

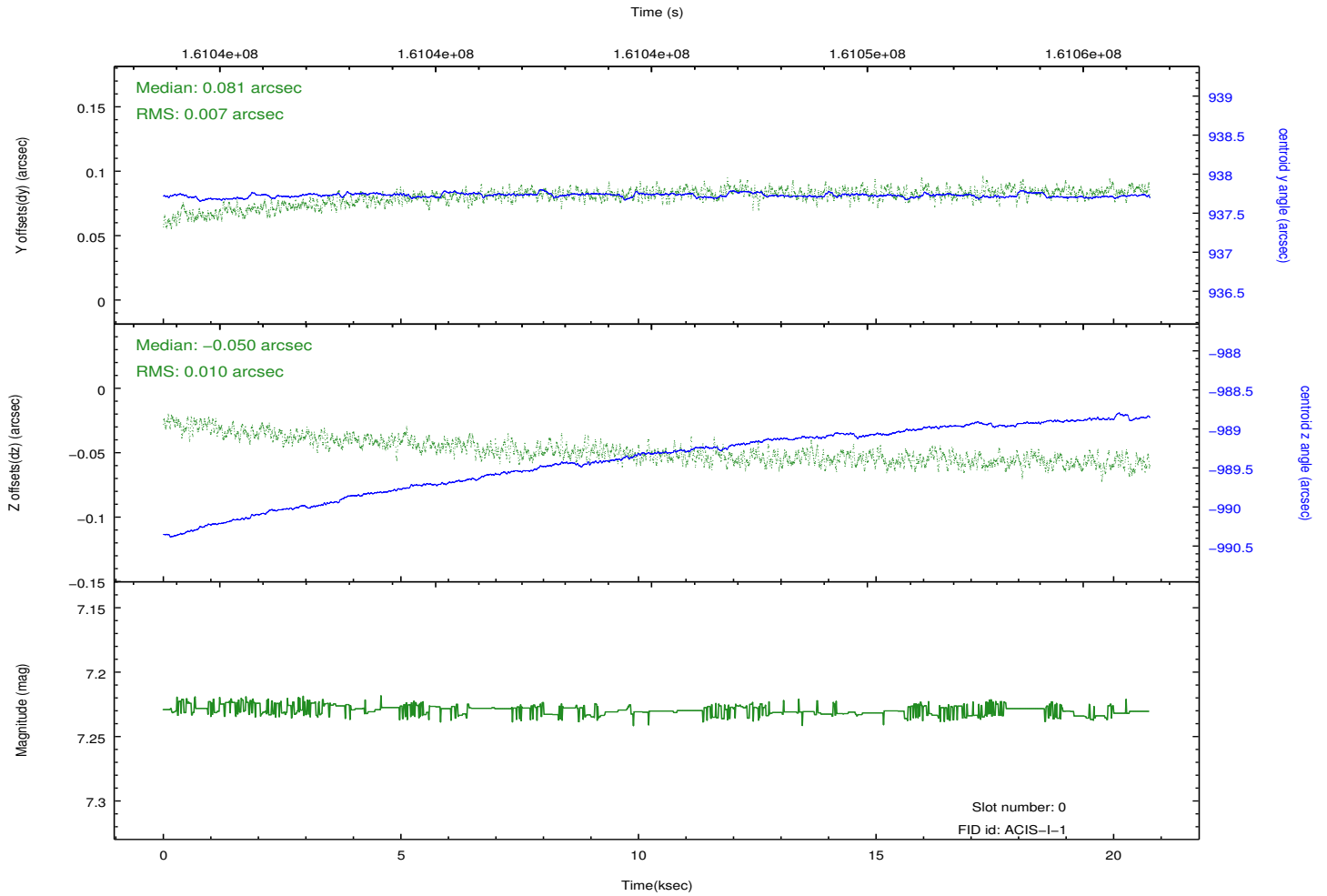
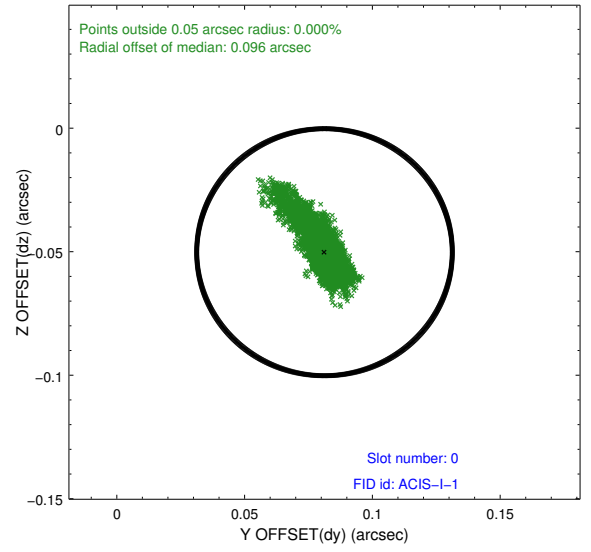
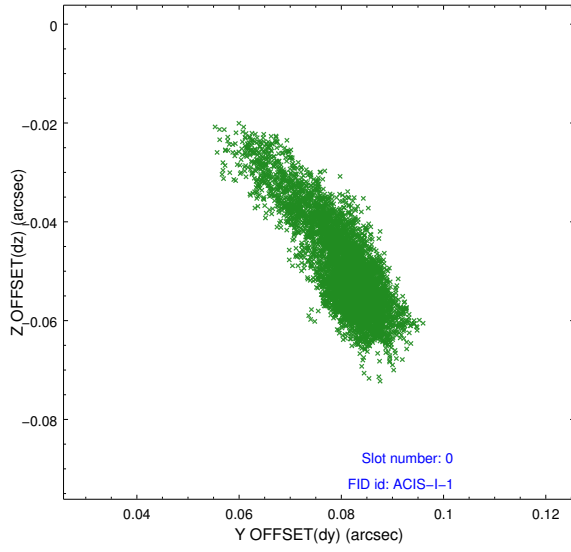


2.4.5 Slot 7

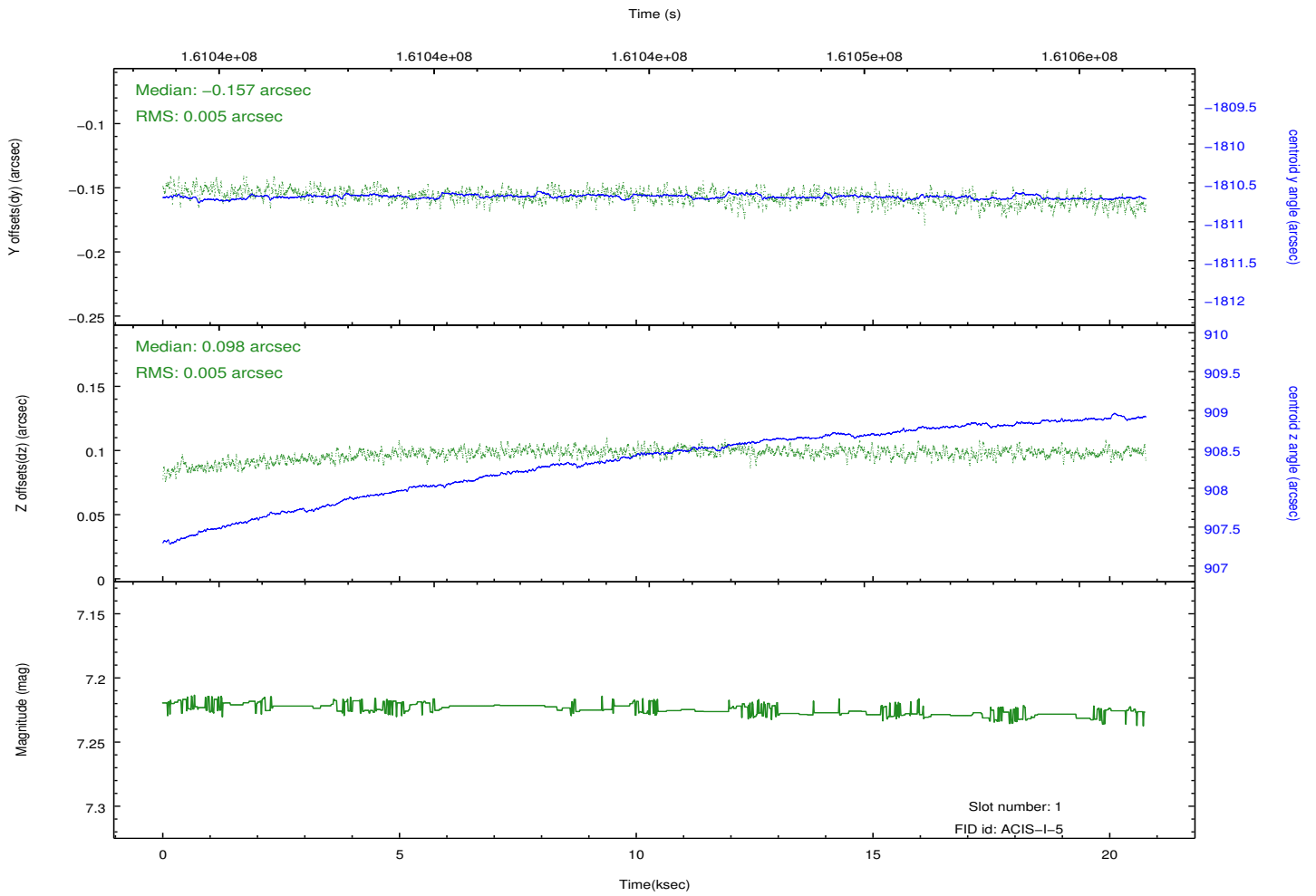
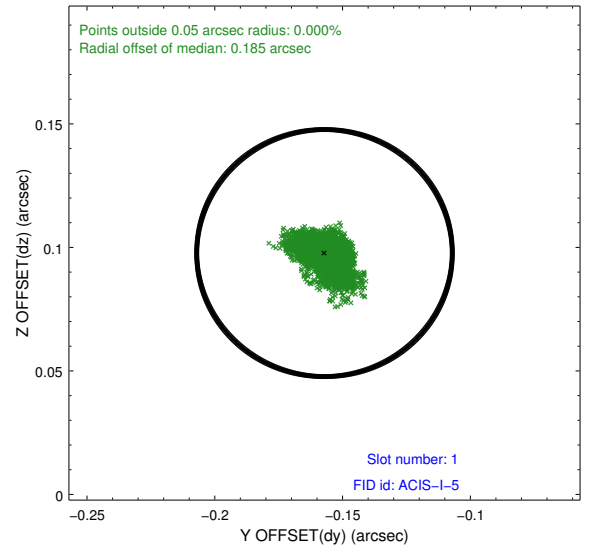
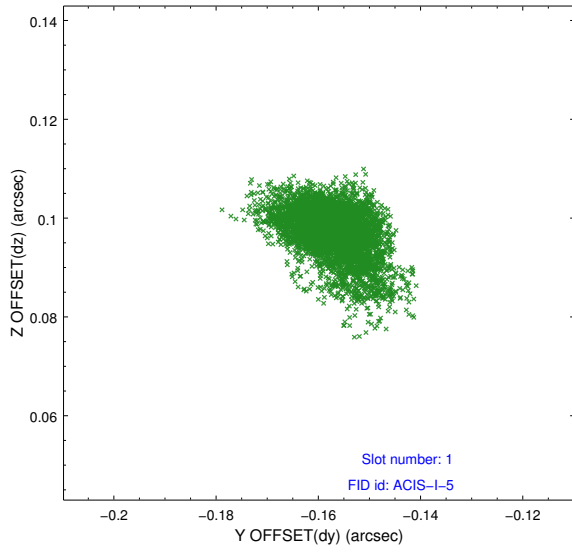


2.5 FID Slots

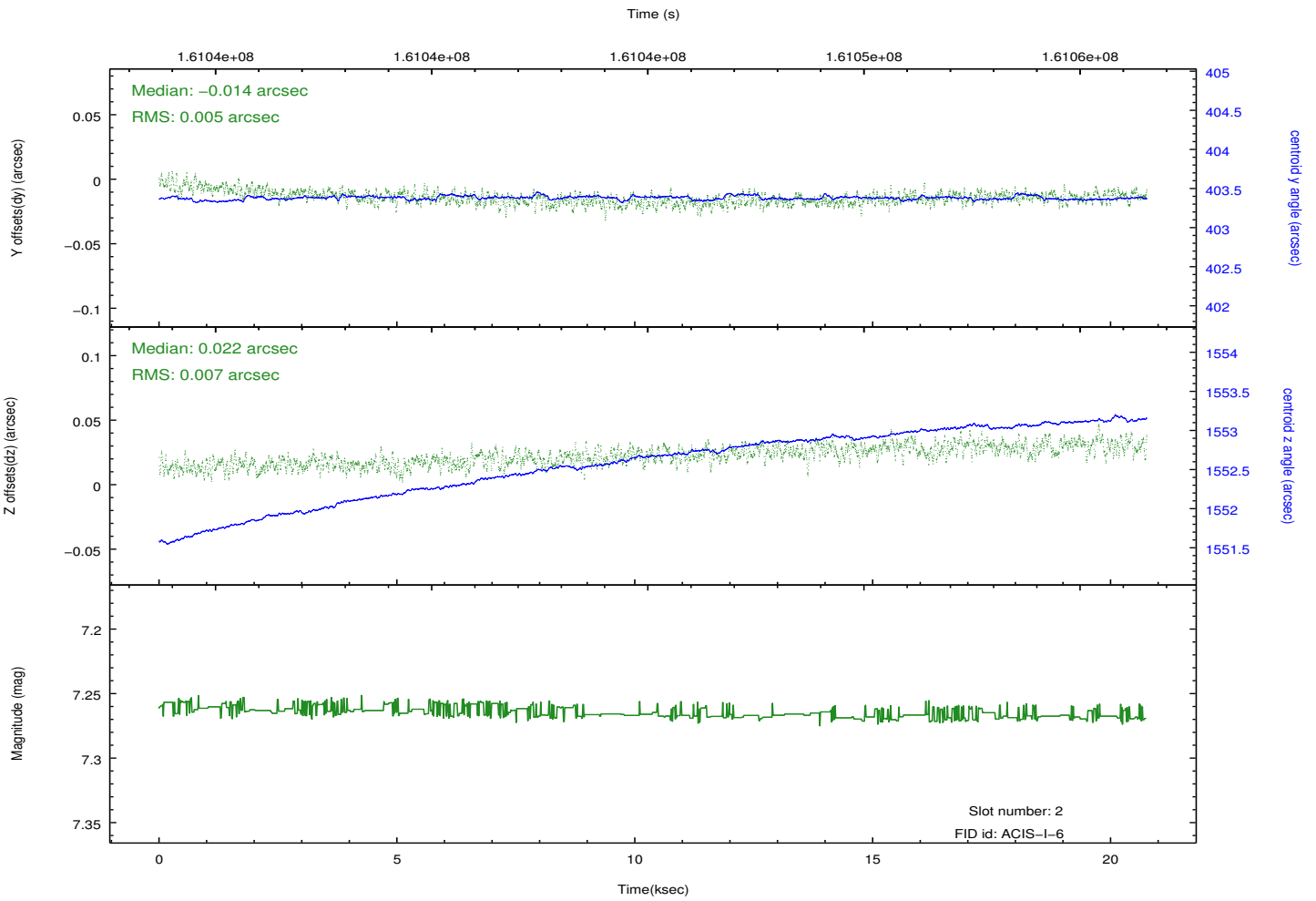
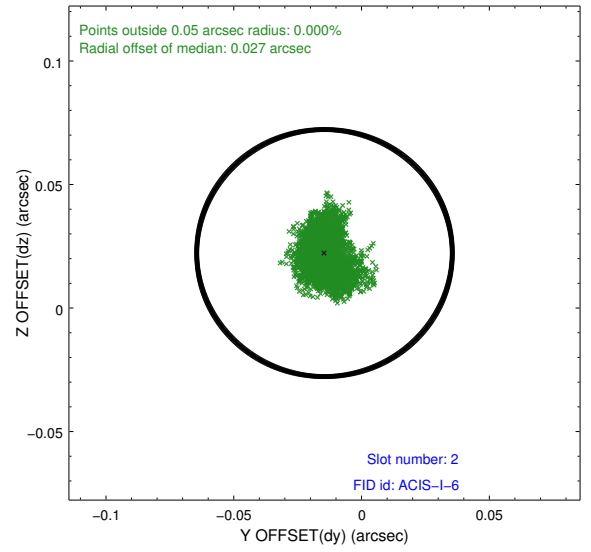
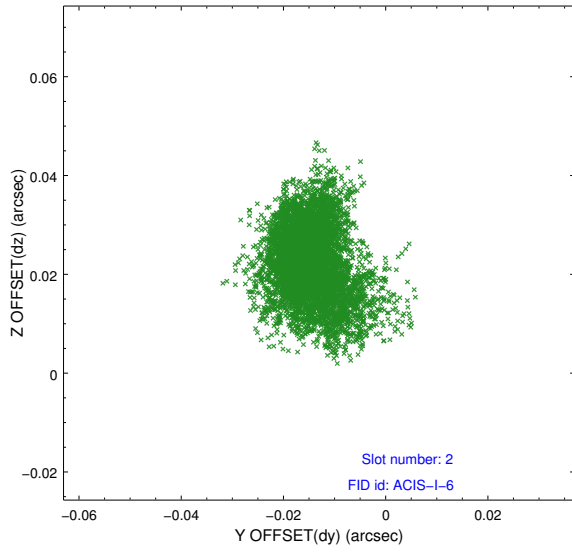
2.5.1 Slot 0



2.5.2 Slot 1



2.5.3 Slot 2



A Summary

A.1 Status

V&V Scientist	Jen Lauer
V&V Date (YYYY-MM-DD)	2012.11.05
V&V Edition	1
V&V Disposition and Status	OK
V&V Charge Time	20.314

A.2 Comments