

V&V Reference Report

L2 ASCDS Version : 8.4.5

Observation 3799 - L2 Version 3
Chandra X-Ray Center

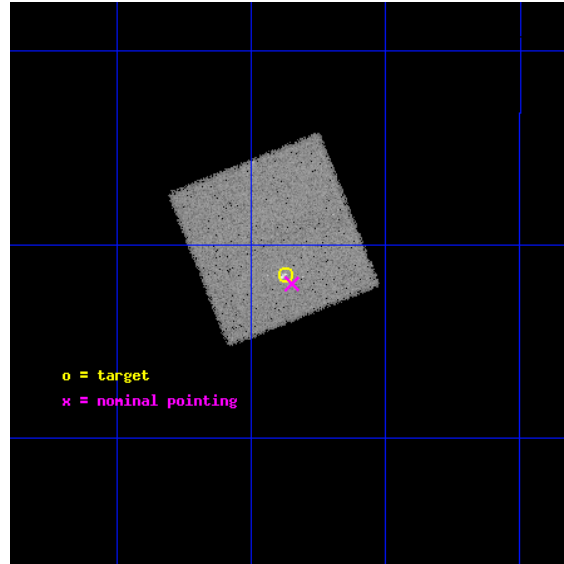
L2 Processing Date : Oct 31 2012

Contents

1	Front	2
2	OBI	3
2.1	OBI	3
2.1.1	Images	3
2.1.2	Bias	3
2.1.3	Parameters	4
2.1.4	Events	4
2.2	Compared Parameters	5
2.3	Aspect	6
2.4	Star Slots	9
2.4.1	Slot 3	9
2.4.2	Slot 4	10
2.4.3	Slot 5	11
2.4.4	Slot 6	12
2.4.5	Slot 7	13
2.5	FID Slots	14
2.5.1	Slot 0	14
2.5.2	Slot 1	15
2.5.3	Slot 2	16
A	Summary	17
A.1	Status	17
A.2	Comments	17

1 Front

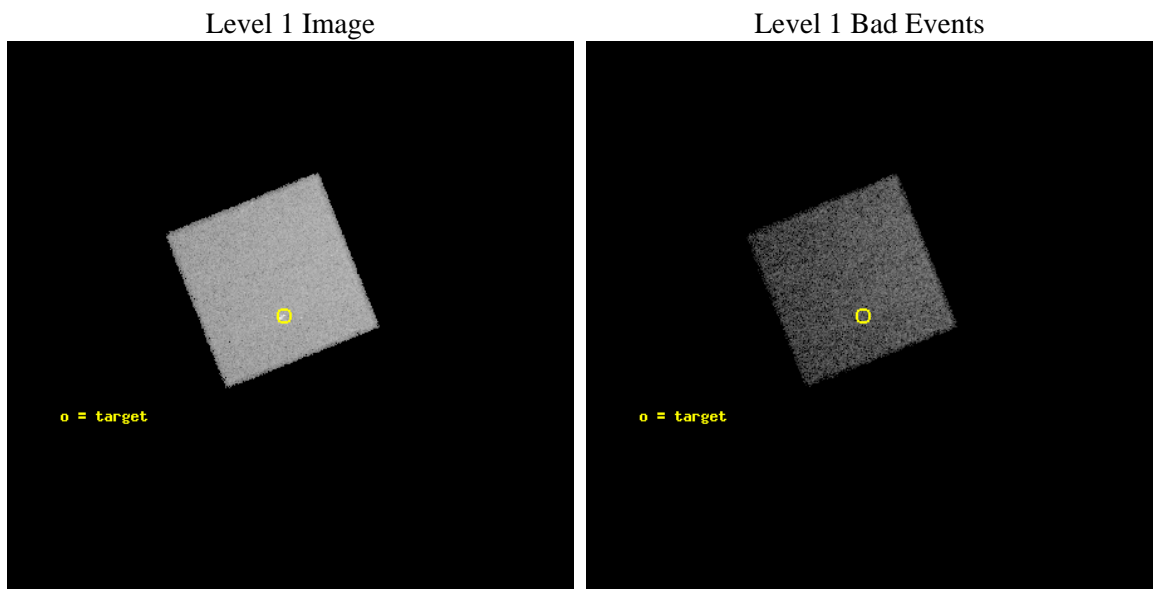
seq_num	400286	Sequence number
obs_id	3799	Observation id
title	X-RAY QUIESCENT COUNTERPARTS OF THE GLOBULAR CLUSTER TRANSIENTS	Pr
observer	Dr. Rudy Wijnands	Principal investigator
object	NGC 6440	Source name
dtcycle	0	
cycle	P	events from which exps? Prim/Second/Both
ra_targ	267.2175	Observer's specified target RA [deg]
dec_targ	-20.358889	Observer's specified target Dec [deg]
ra_nom	267.21205853444	Nominal RA [deg]
dec_nom	-20.367127294431	Nominal Dec [deg]
roll_nom	248.1515661593	Nominal Roll [deg]
revision	3	Processing version of data
ontime	24375.0	Sum of GTIs [s]
livetime	24046.050035514	Livetime [s]
ontime7	24375.0	Sum of GTIs [s]
l2events	78688	Number of level 2 events



2 OBI

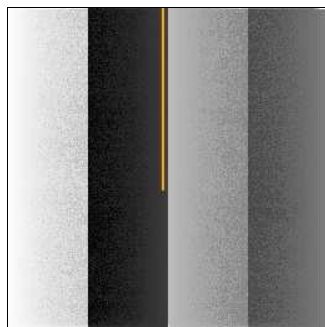
2.1 OBI

2.1.1 Images



2.1.2 Bias

Chip 7



2.1.3 Parameters

obi_num	1	Obi number	sched_exp_time	24000.000000	[s] Scheduled observation exposure time
ascdsver	8.4.5	Processing system revision	ontime	24375.0	Sum of GTIs [s]
caldbver	4.5.2	 	ontime7	24375.0	Sum of GTIs [s]
date	2012-10-31T04:03:33	Date and time of file creation	l1events	192433	Number of level 1 events
revision	3	Processing version of data			

2.1.4 Events

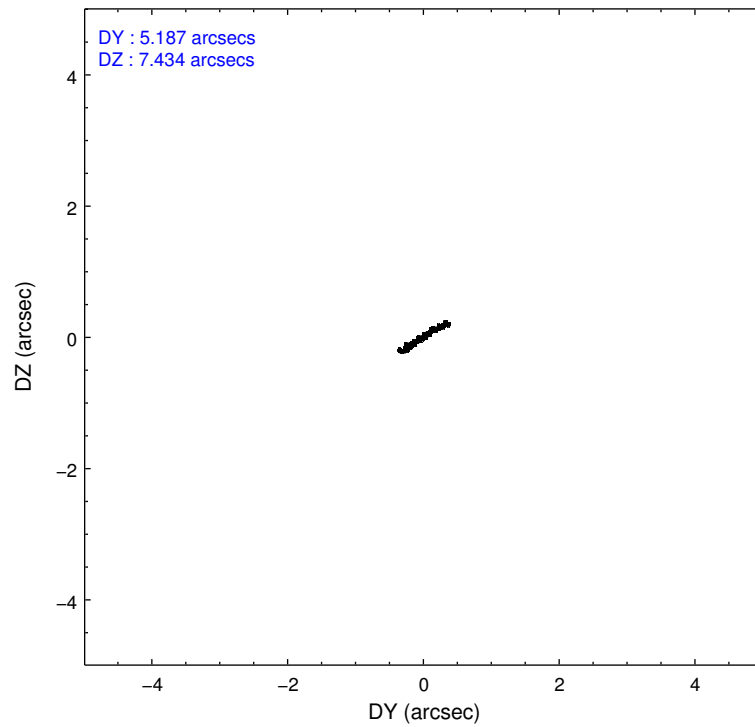
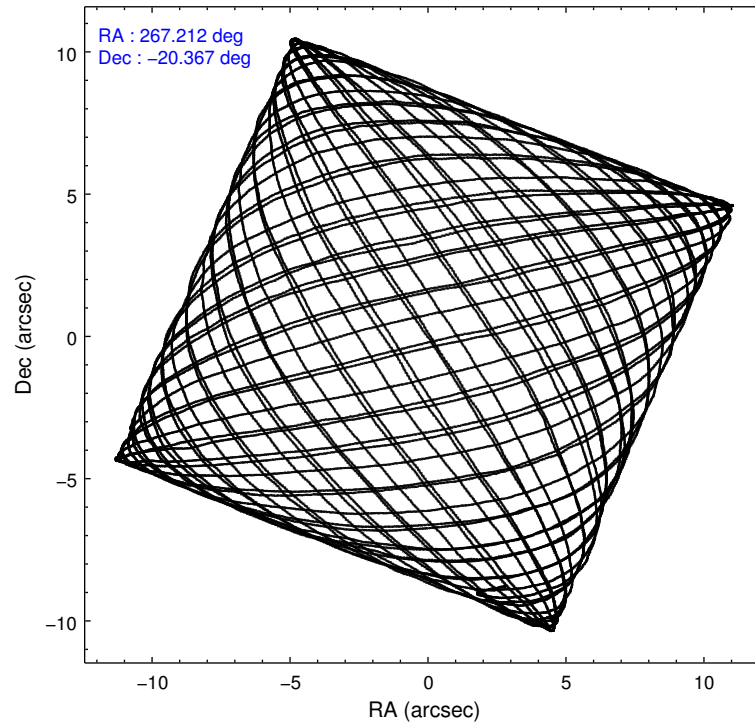
	ccd 7
level 1 events	192433
rejected events	111853
rejected %	58%

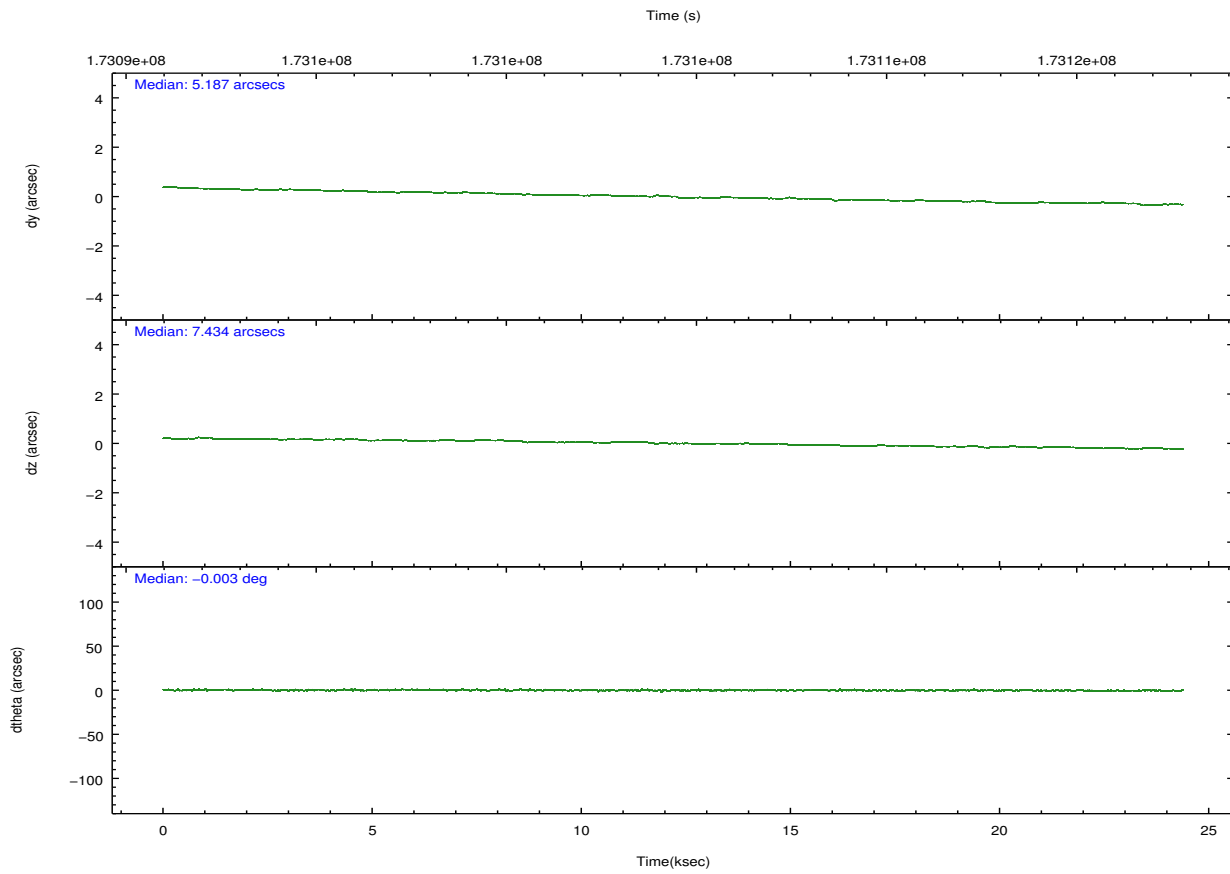
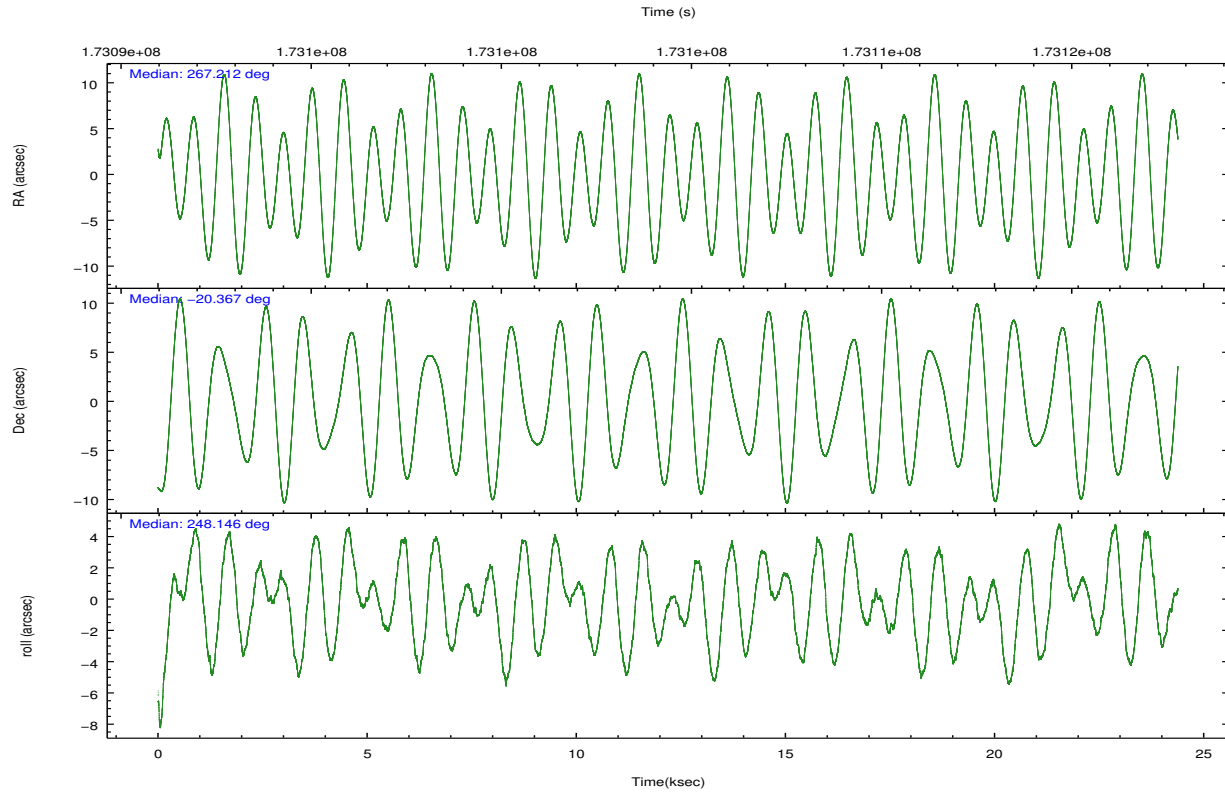
	ccd 7
grade 0 events	8027
	4%
grade 1 events	182
	0%
grade 2 events	16134
	8%
grade 3 events	7496
	3%
grade 4 events	7510
	3%
grade 5 events	17915
	9%
grade 6 events	42257
	21%
grade 7 events	92912
	48%

2.2 Compared Parameters

Parameter	Planned	Actual	Parameter	Planned	Actual
Instrument	ACIS	ACIS	Obspar format version number	7	7
Detector	ACIS-7	ACIS-7	Obspar file type	PREDICTED	ACTUAL
Grating	NONE	NONE	Obspar update status	NONE	UPDATED
Data mode	FAINT	FAINT	Number of optional ACIS chips dropped	0	0
Observation mode	POINTING	POINTING	On-chip summing requested	N	N
[deg] Pointing RA	267.207534	267.2120585344424	Subarray requested	NONE	NONE
[deg] Pointing Dec	-20.340196	-20.36712729443104	Alternating exposures requested	N	N
[deg] Pointing Roll	247.993358	248.151566159305	[s] Primary exposure time	0.000000	3
[mm] SIM focus pos	-0.684267	-0.6828225247311905			
[mm] SIM defocus	0	0.001444936568705701			
[mm] SIM translation stage pos	-190.132523	-190.1425803651734			
[mm] SIM translation stage offset	0	0.01005778216563158			
[s] Observation start time (MET)	173092576.184000	173091515.57605			
Observation start date	2003-06-27T09:15:12	2003-06-27T08:58:35			
[s] Observation end time (MET)	173116576.184000	173117249.22715			
Observation end date	2003-06-27T15:55:12	2003-06-27T16:07:29			
Read mode	TIMED	TIMED			

2.3 Aspect



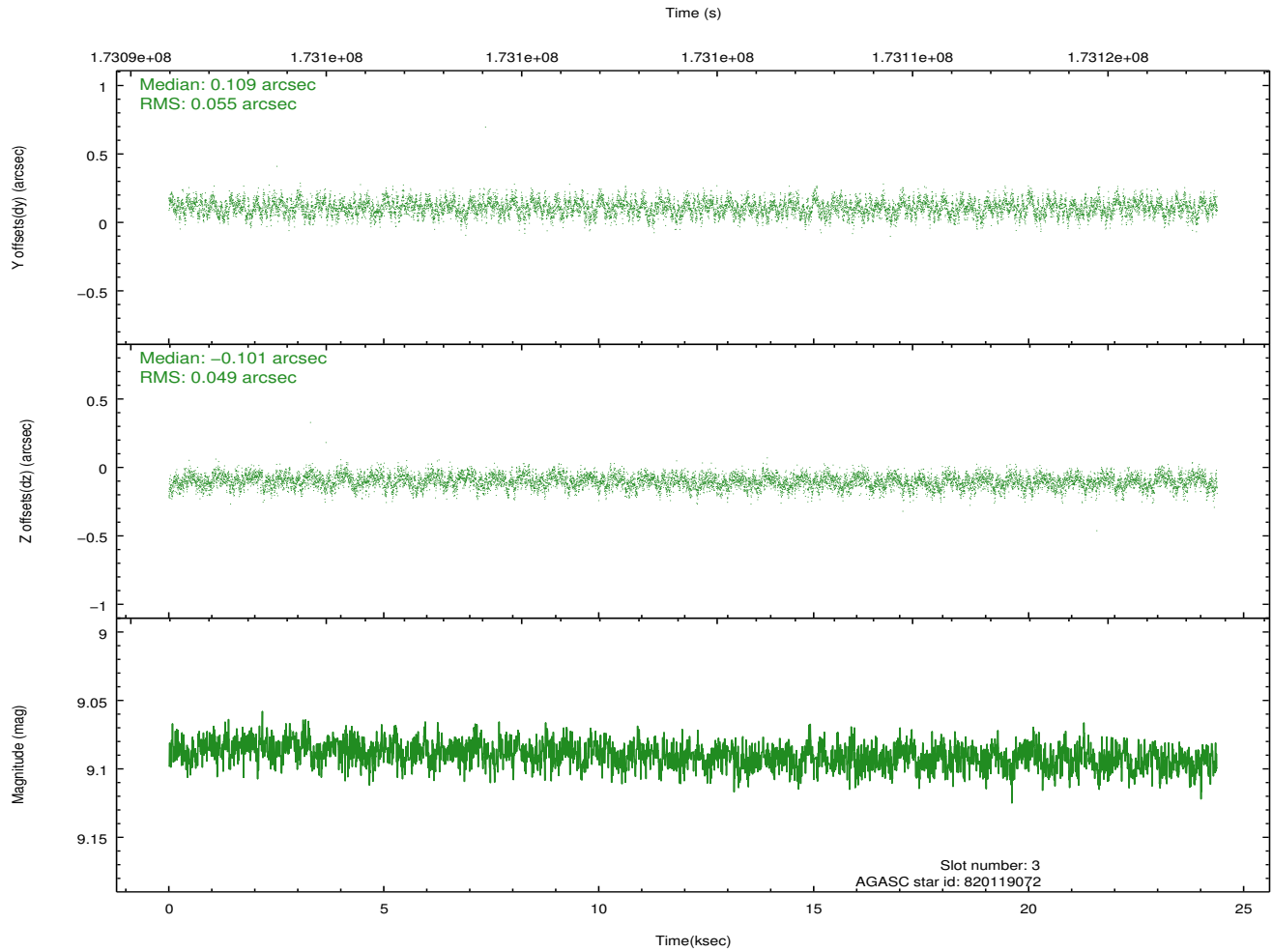
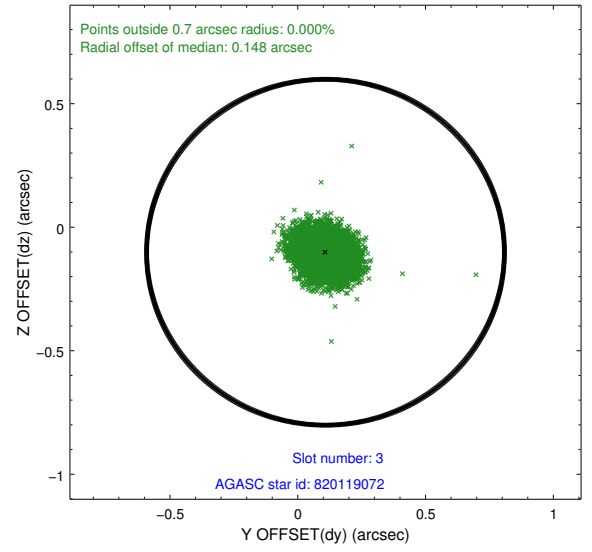
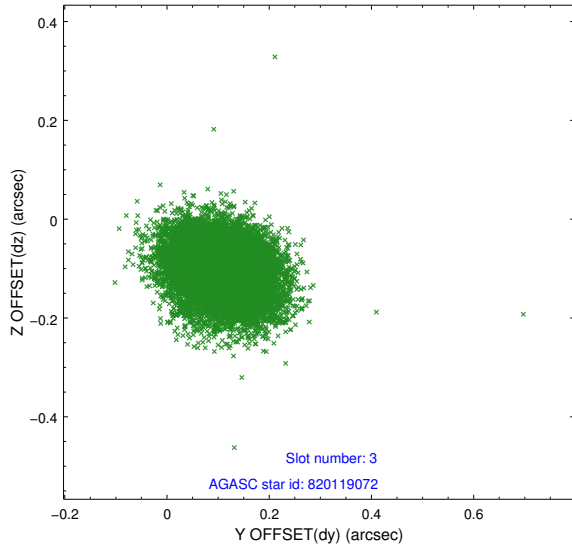


Slot Statistics

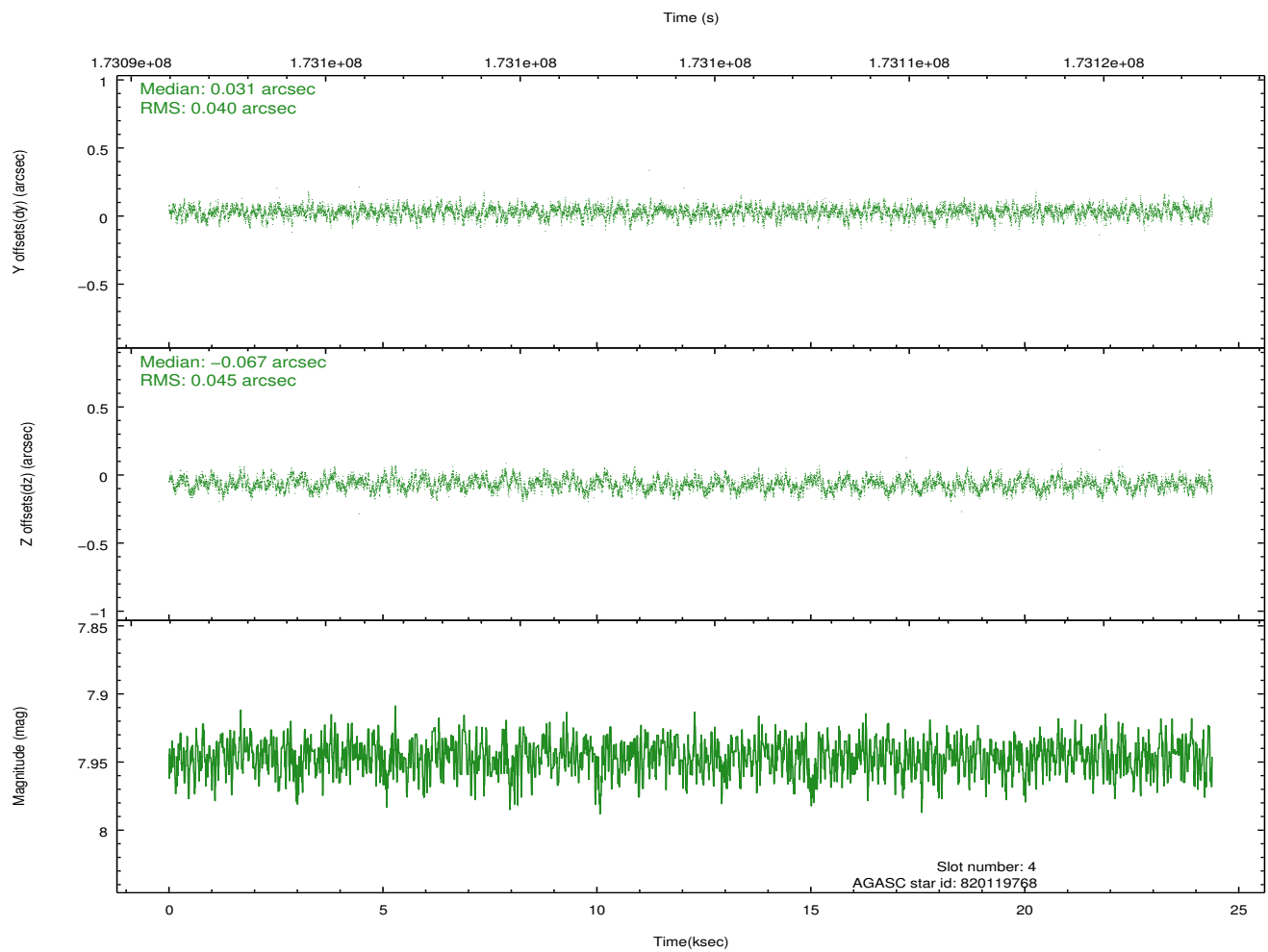
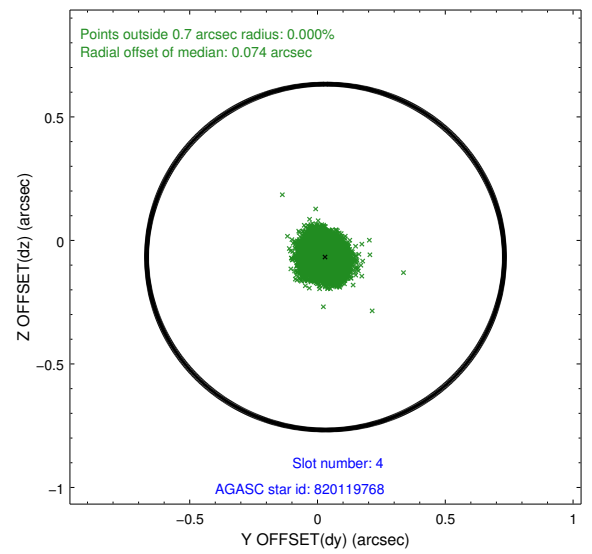
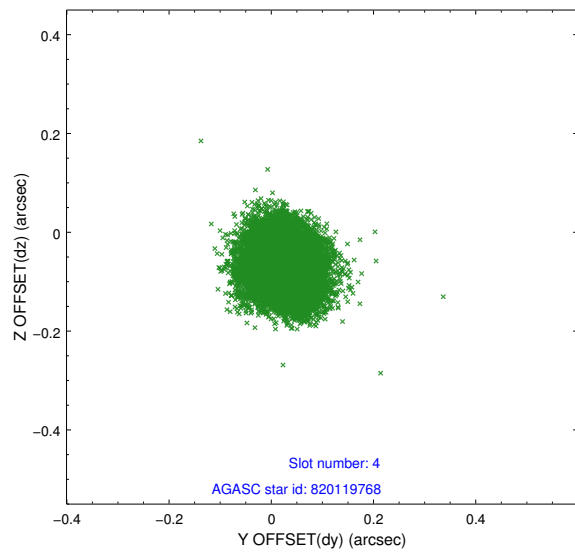
slot	status	id	mag	n_pts	med_dy	med_dz	dr1	dr2	ra	dec	mean_y	mean_z
0	FID	ACIS-S-2	7.11	5946	-0.066	-0.044	0.016	0.026	0.000000	0.000000	-757.98	-1728.59
1	FID	ACIS-S-4	7.20	5944	0.036	0.041	0.011	0.017	0.000000	0.000000	2155.37	179.79
2	FID	ACIS-S-6	7.36	5946	0.001	0.008	0.011	0.018	0.000000	0.000000	404.27	817.33
3	GUIDE	820119072	9.09	11885	0.109	-0.101	0.079	0.126	267.464837	-19.906178	-1774.15	222.28
4	GUIDE	820119768	7.95	11891	0.031	-0.067	0.064	0.101	267.398392	-20.006729	-1354.54	148.99
5	GUIDE	820121744	6.73	11894	-0.063	0.206	0.050	0.083	267.173633	-19.779615	-1827.99	-862.39
6	GUIDE	820250968	8.28	11894	-0.012	-0.008	0.067	0.110	268.040879	-20.078647	-1922.56	2262.32
7	GUIDE	820645320	9.65	11889	-0.067	-0.024	0.105	0.169	267.808573	-20.646290	266.07	2292.03

2.4 Star Slots

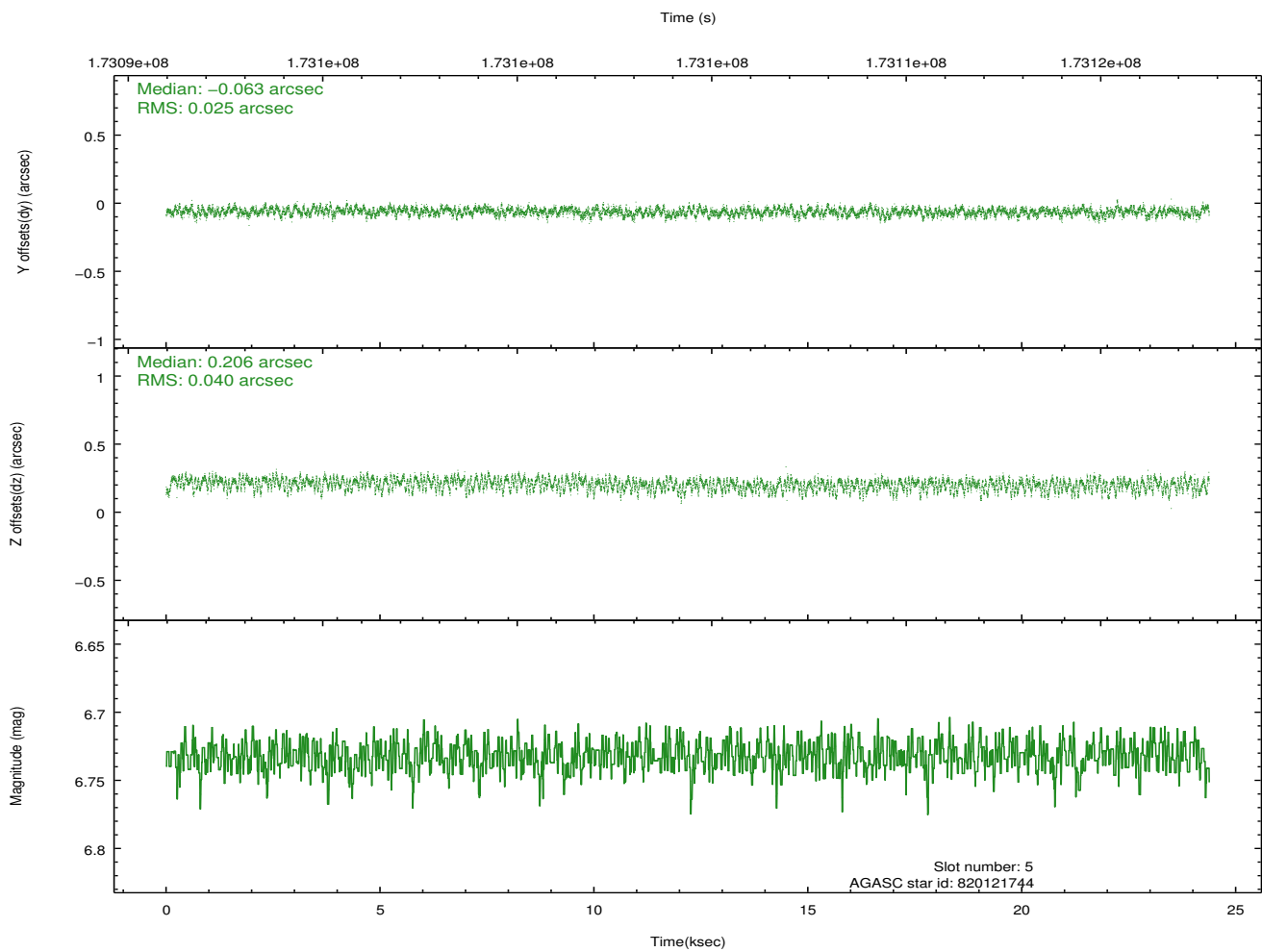
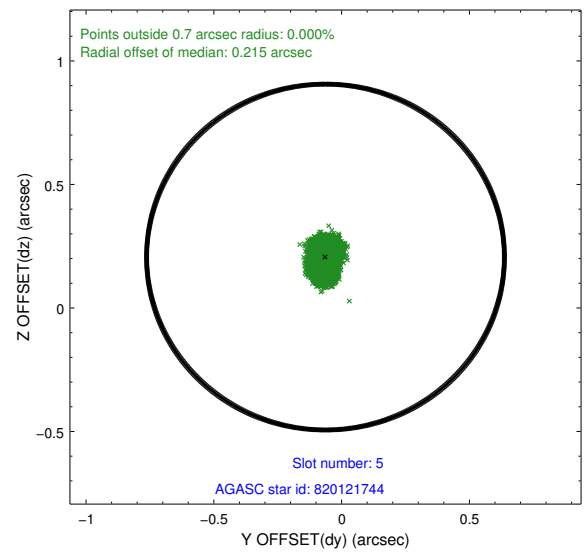
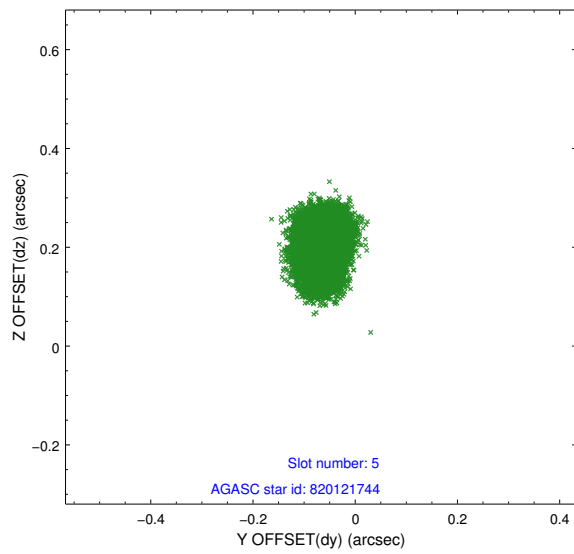
2.4.1 Slot 3



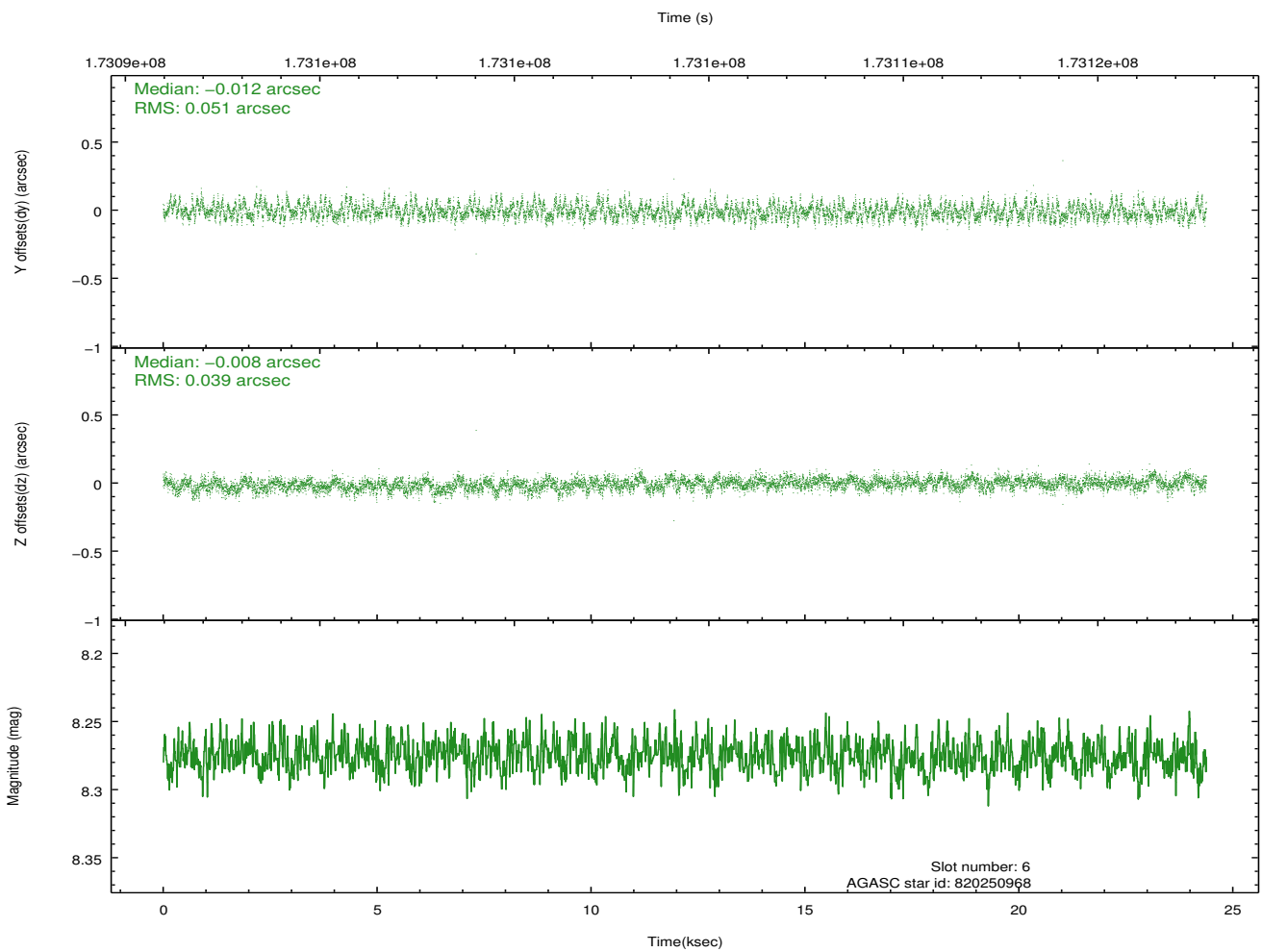
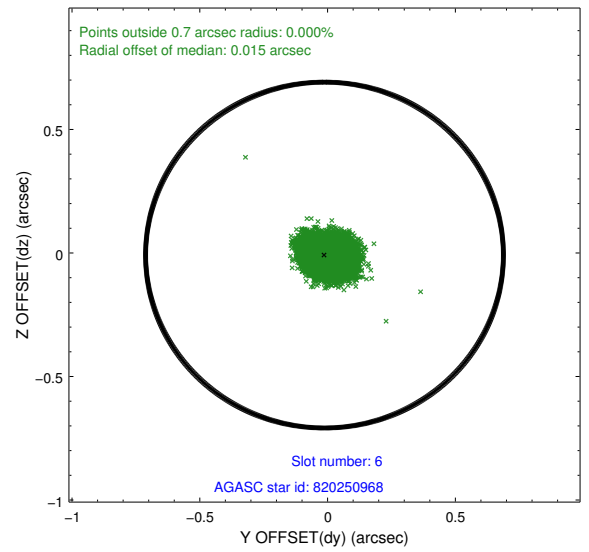
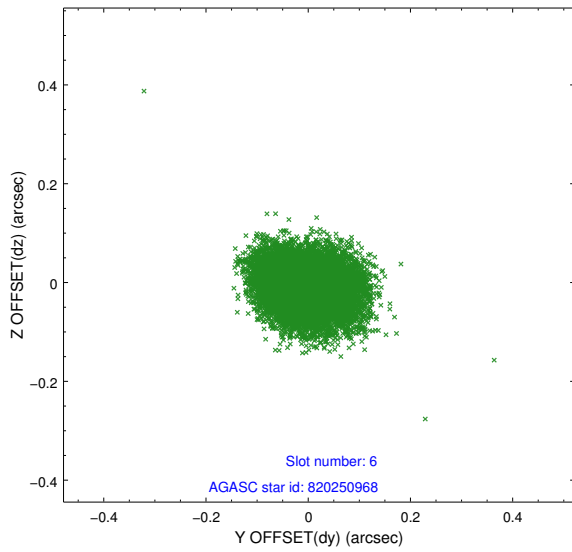
2.4.2 Slot 4



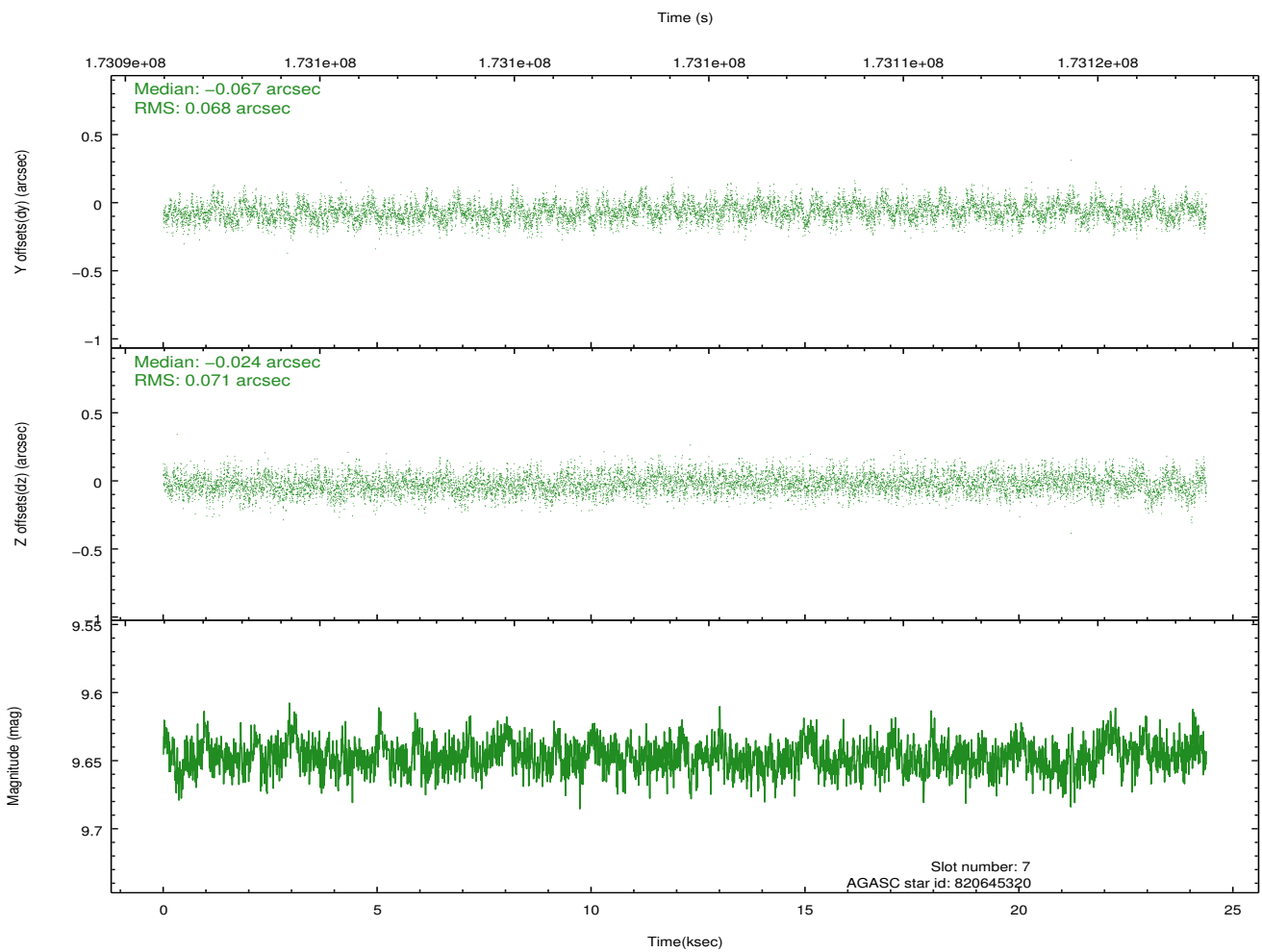
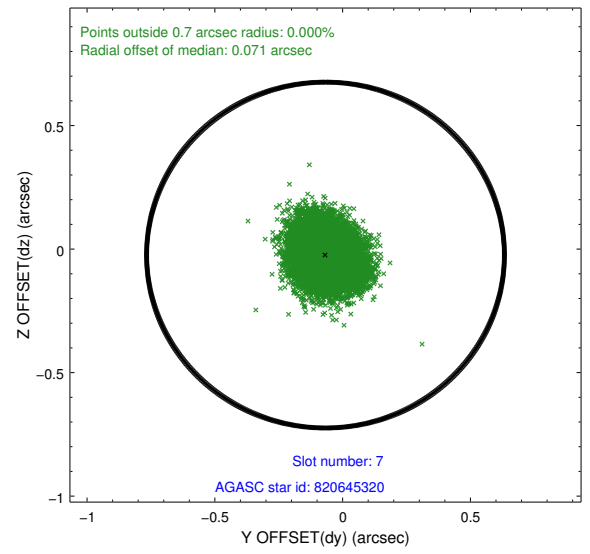
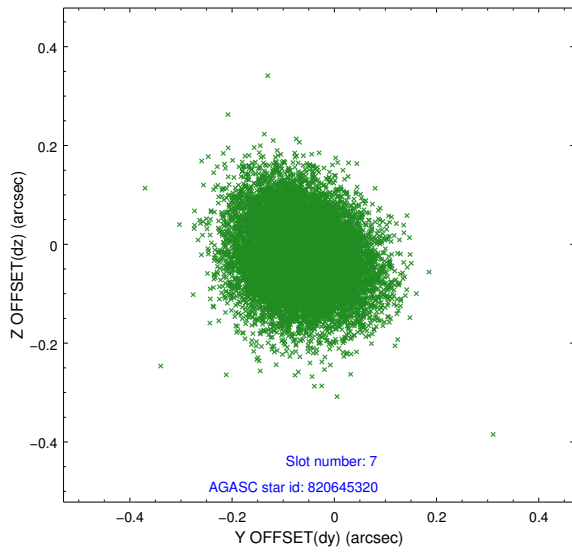
2.4.3 Slot 5



2.4.4 Slot 6

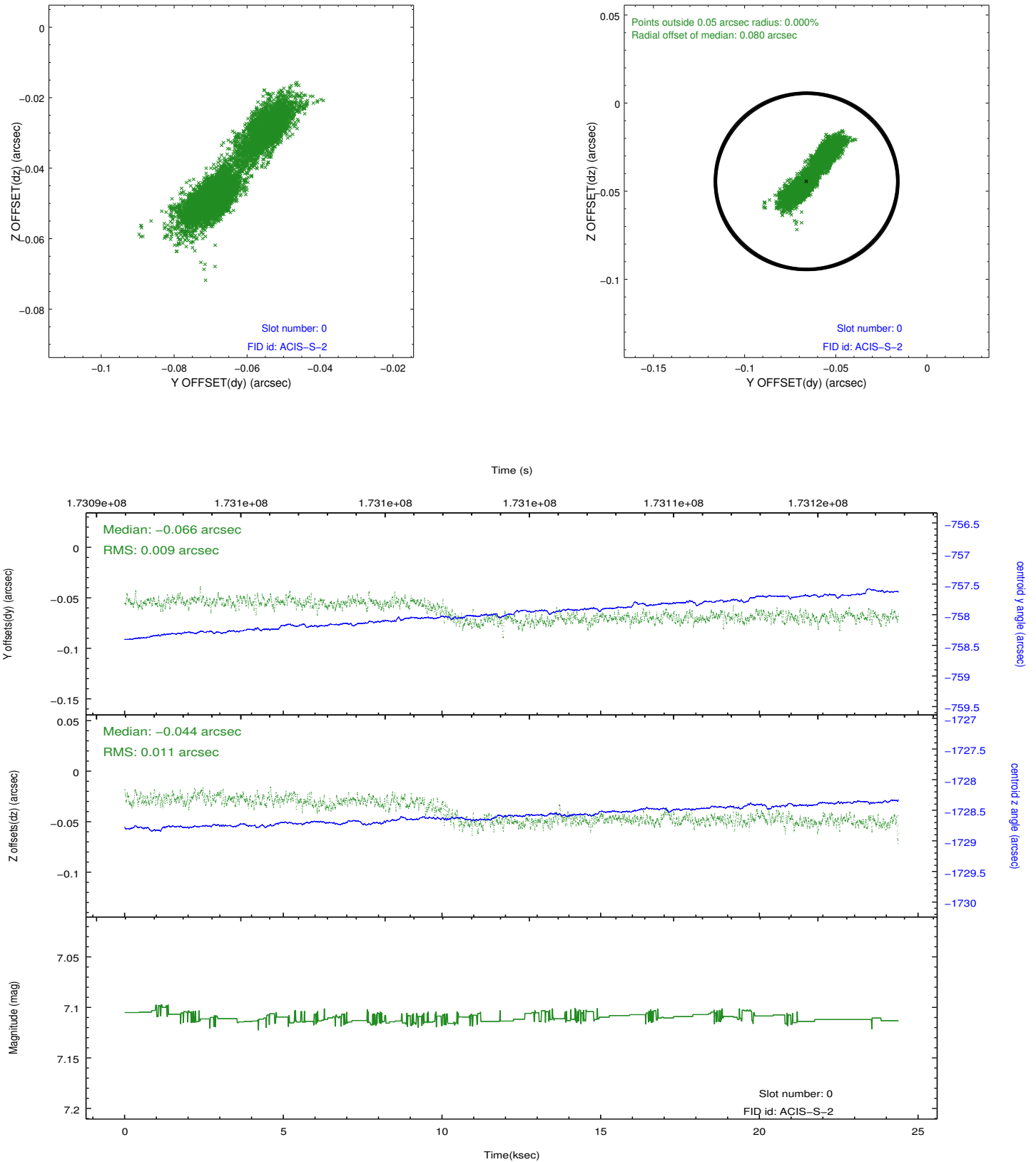


2.4.5 Slot 7

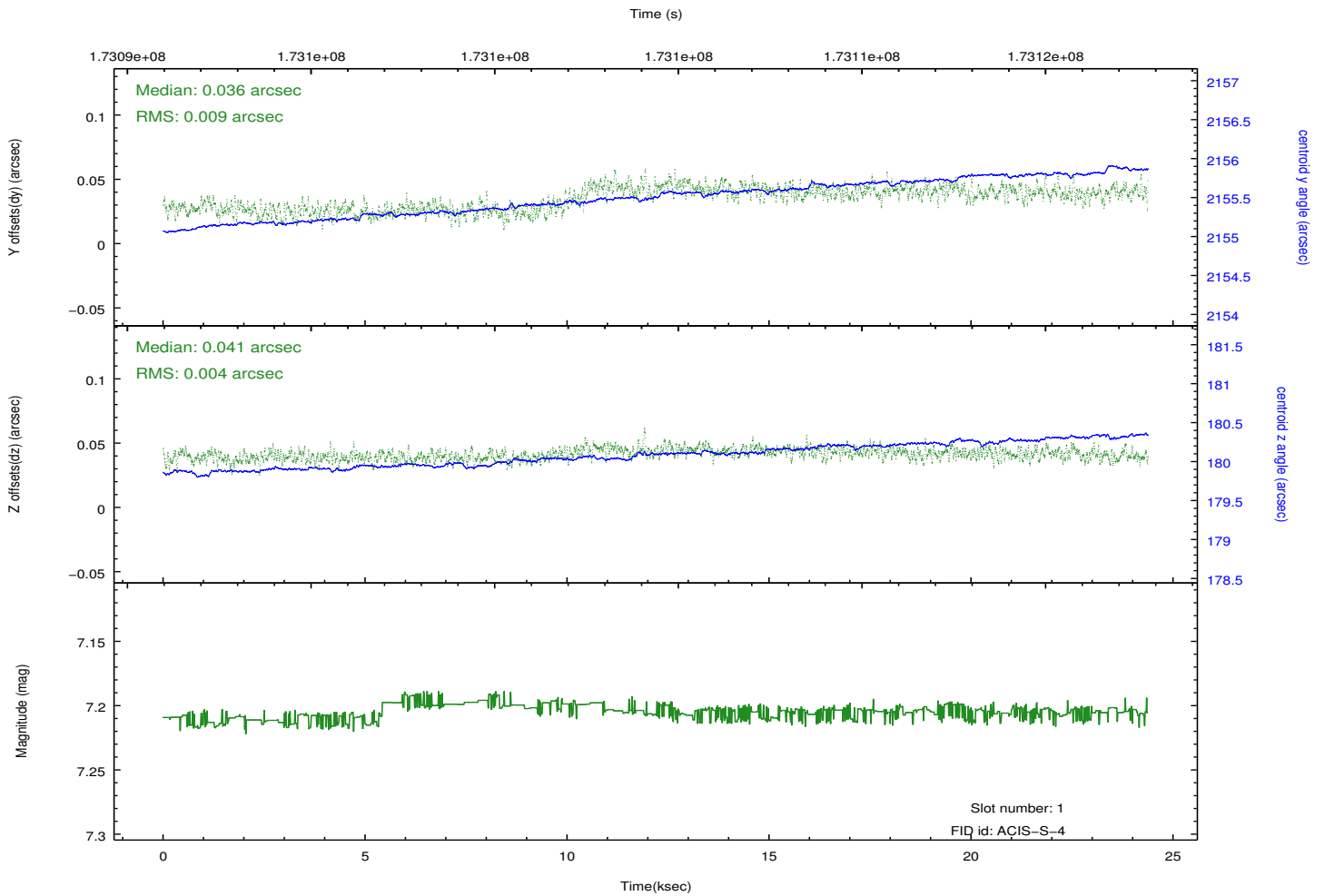
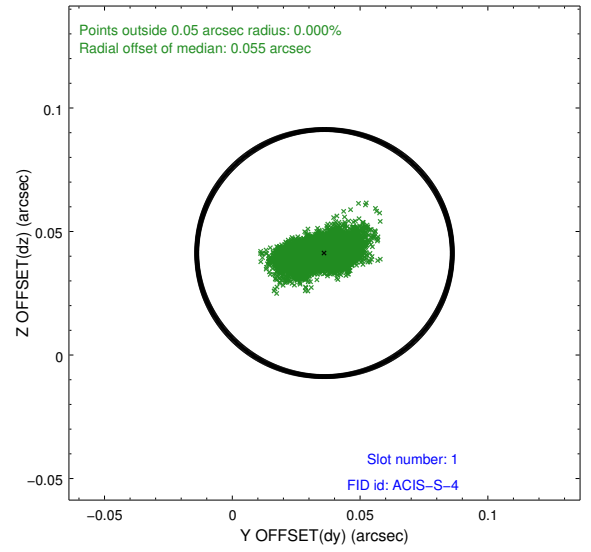
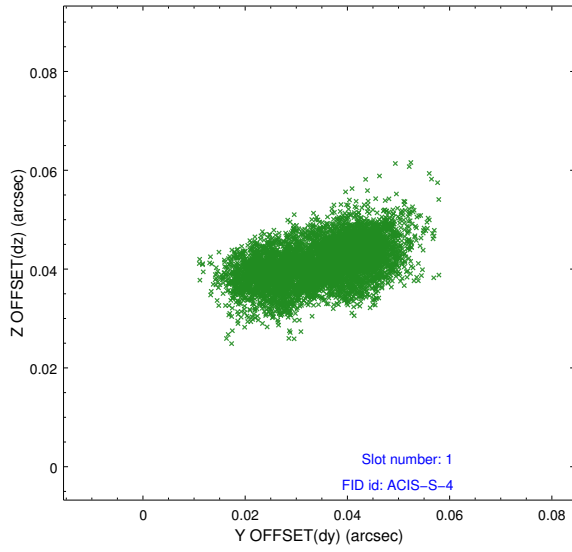


2.5 FID Slots

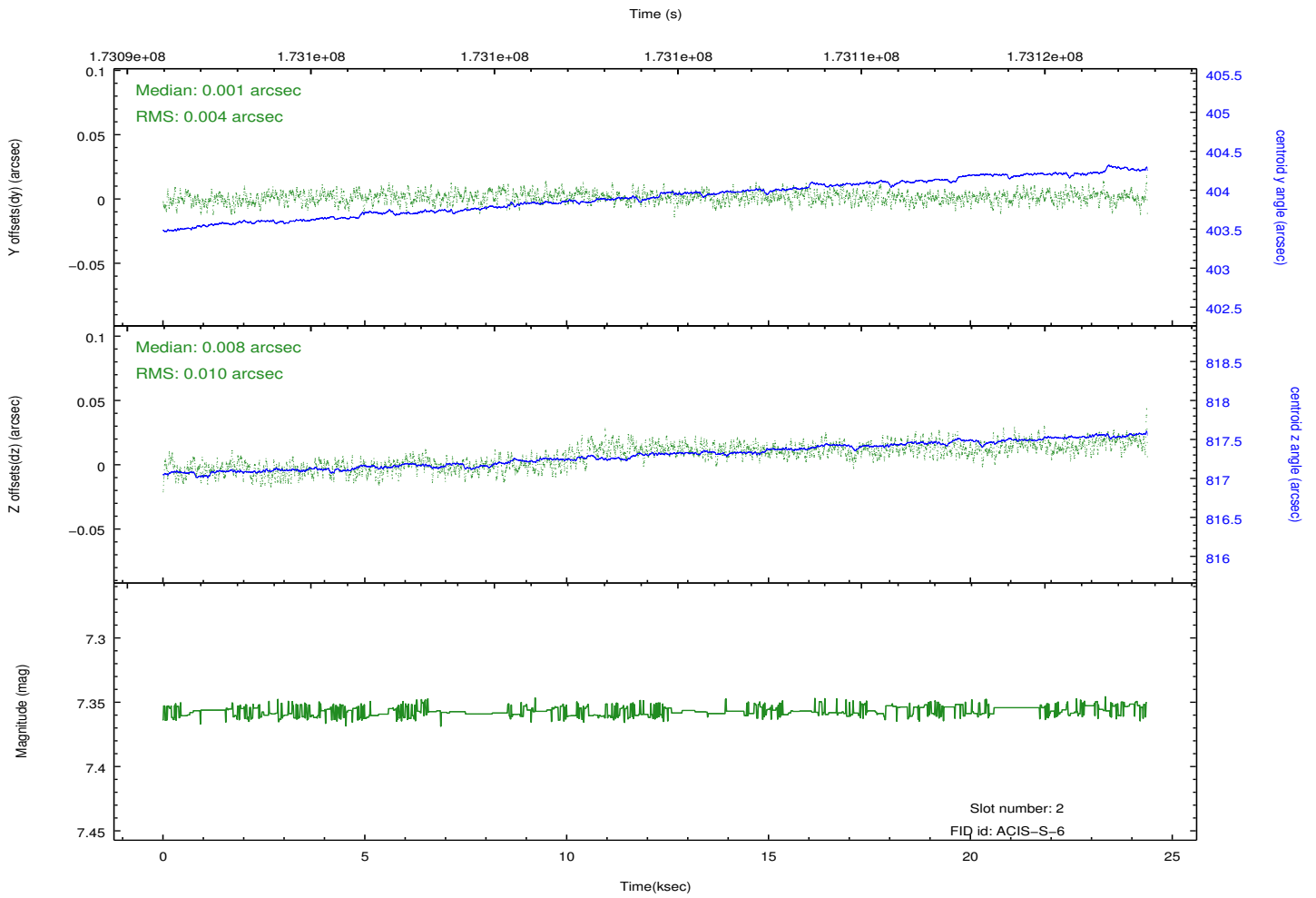
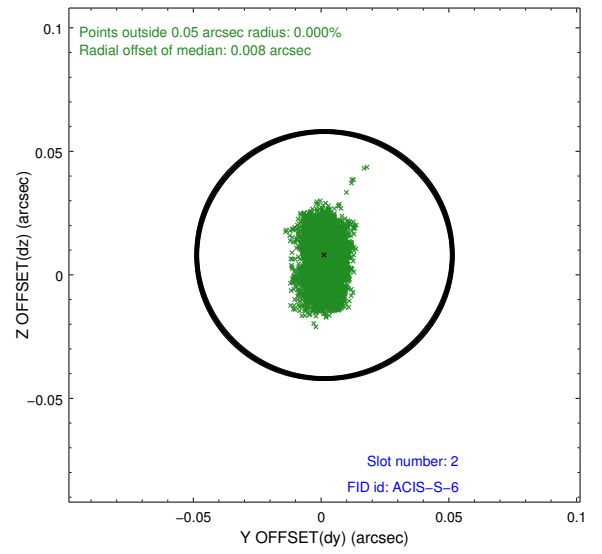
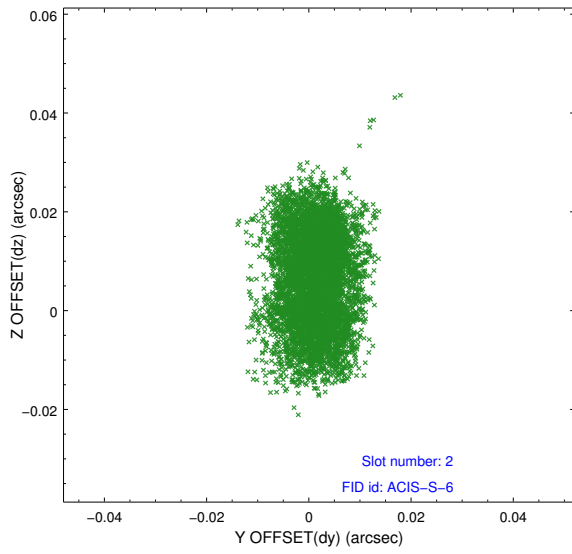
2.5.1 Slot 0



2.5.2 Slot 1



2.5.3 Slot 2



A Summary

A.1 Status

V&V Scientist	Jen Lauer
V&V Date (YYYY-MM-DD)	2012.11.16
V&V Edition	1
V&V Disposition and Status	OK
V&V Charge Time	24.375

A.2 Comments