

V&V Reference Report

L2 ASCDS Version : 8.4.5

Observation 3839 - L2 Version 3
Chandra X-Ray Center

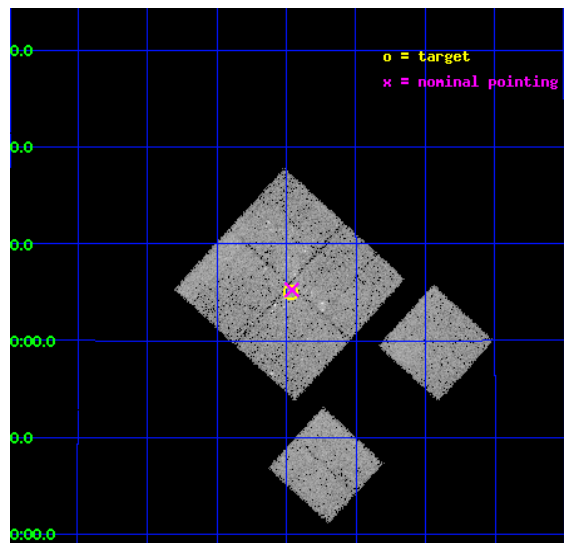
L2 Processing Date : Oct 29 2012

Contents

1	Front	2
2	OBI	3
2.1	OBI	3
2.1.1	Images	3
2.1.2	Bias	3
2.1.3	Parameters	4
2.1.4	Events	4
2.2	Compared Parameters	5
2.3	Aspect	6
2.4	Star Slots	9
2.4.1	Slot 3	9
2.4.2	Slot 4	10
2.4.3	Slot 5	11
2.4.4	Slot 6	12
2.4.5	Slot 7	13
2.5	FID Slots	14
2.5.1	Slot 0	14
2.5.2	Slot 1	15
2.5.3	Slot 2	16
A	Summary	17
A.1	Status	17
A.2	Comments	17

1 Front

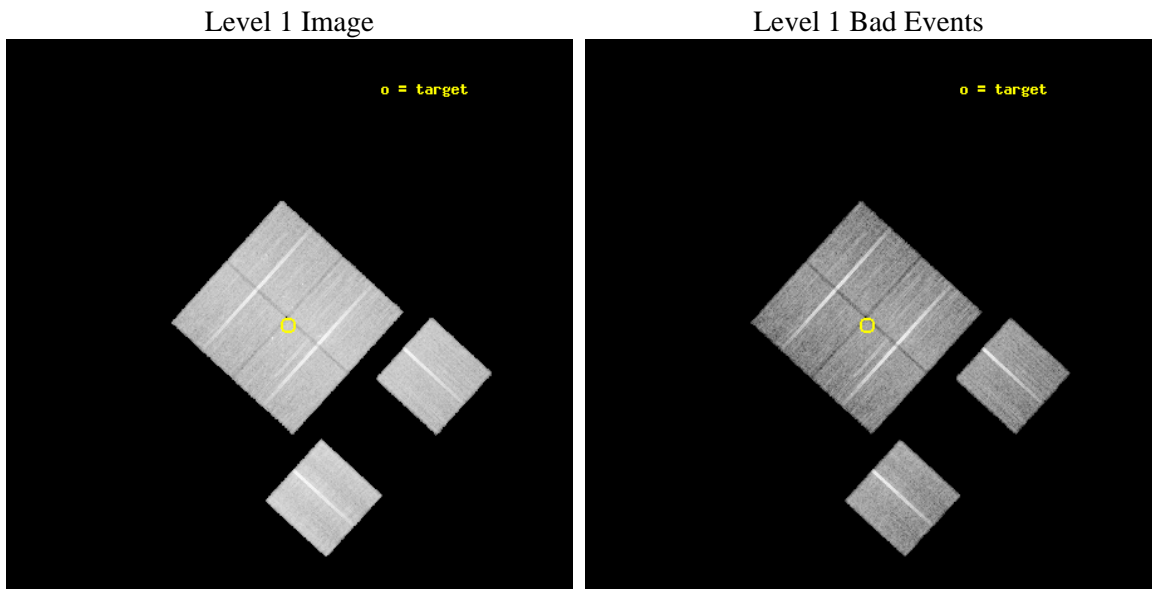
seq_num	500318	Sequence number
obs_id	3839	Observation id
title	SUPERNOVA REMNANT(S) AND STAR-FORMING REGIONS IN THE W51 COMPLEX	P
observer	PROF. BON-CHUL KOO	Principal investigator
object	W51B	Source name
dtcycle	0	
cycle	P	events from which exps? Prim/Second/Both
ra_targ	290.616667	Observer's specified target RA [deg]
dec_targ	14.083333	Observer's specified target Dec [deg]
ra_nom	290.61508033661	Nominal RA [deg]
dec_nom	14.08768521384	Nominal Dec [deg]
roll_nom	132.36370410327	Nominal Roll [deg]
revision	3	Processing version of data
ontime	29897.599888623	Sum of GTIs [s]
livetime	29519.01847666	Livetime [s]
ontime0	29897.599888623	Sum of GTIs [s]
ontime1	29897.599888623	Sum of GTIs [s]
ontime2	29897.599888623	Sum of GTIs [s]
ontime3	29897.599888623	Sum of GTIs [s]
ontime6	29897.599888623	Sum of GTIs [s]
ontime8	29897.599888623	Sum of GTIs [s]
l2events	95901	Number of level 2 events



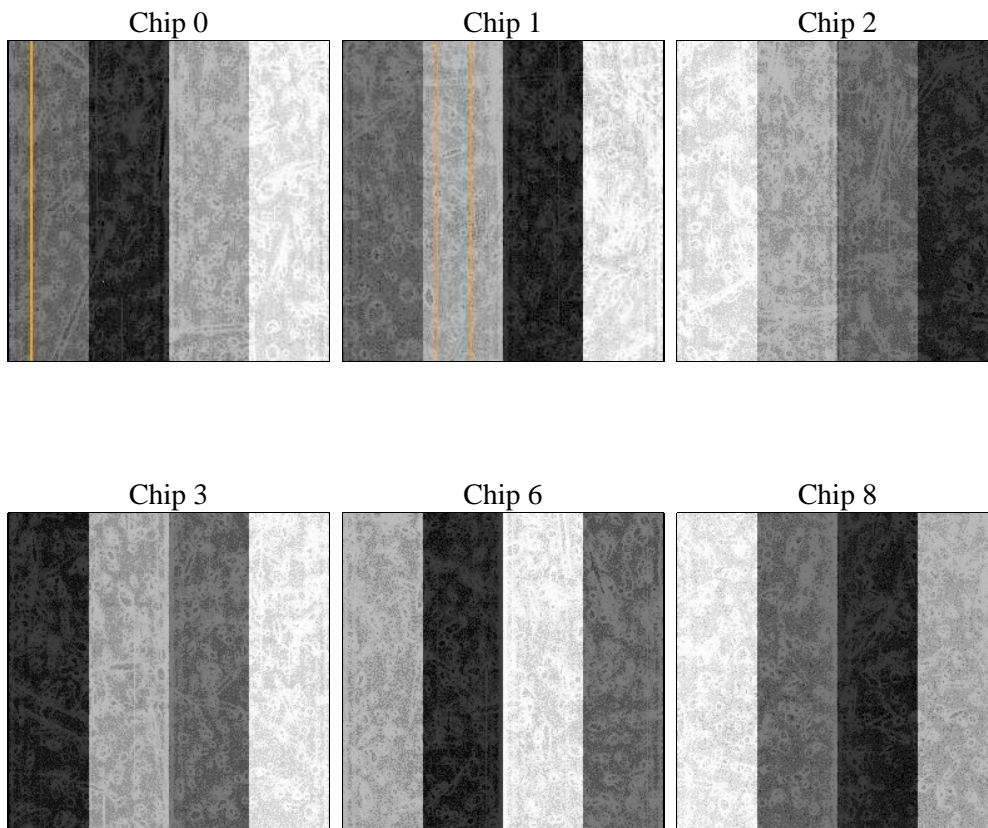
2 OBI

2.1 OBI

2.1.1 Images



2.1.2 Bias



2.1.3 Parameters

obi_num	1	Obi number	sched_exp_time	30000.000000	[s] Scheduled observation exposure time
ascdsver	8.4.5	Processing system revision	ontime	29897.599888623	Sum of GTIs [s]
caldbver	4.5.2	 	ontime0	29897.599888623	Sum of GTIs [s]
date	2012-10-29T04:59:29	Date and time of file creation	ontime1	29897.599888623	Sum of GTIs [s]
revision	3	Processing version of data	ontime2	29897.599888623	Sum of GTIs [s]
			ontime3	29897.599888623	Sum of GTIs [s]
			ontime6	29897.599888623	Sum of GTIs [s]
			ontime8	29897.599888623	Sum of GTIs [s]
			l1events	943254	Number of level 1 events

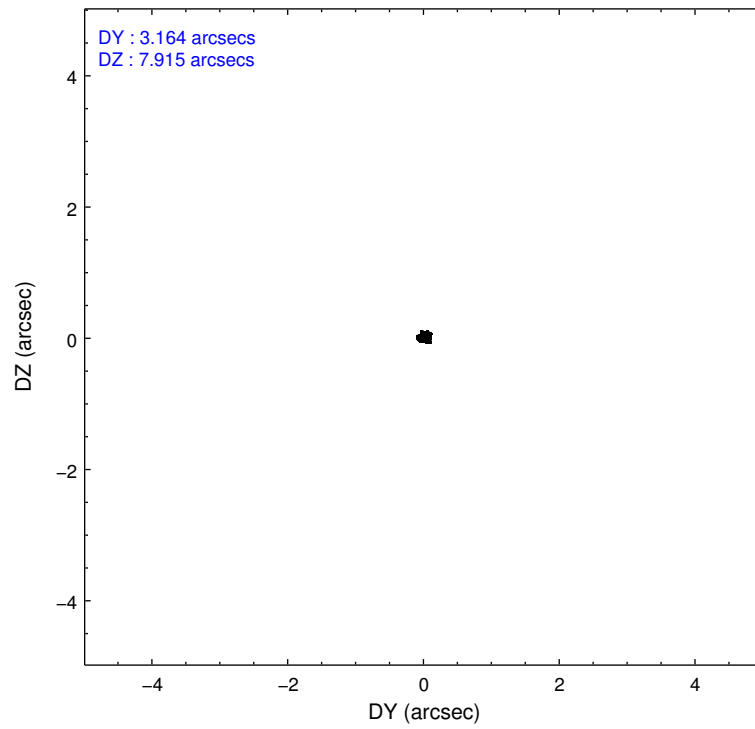
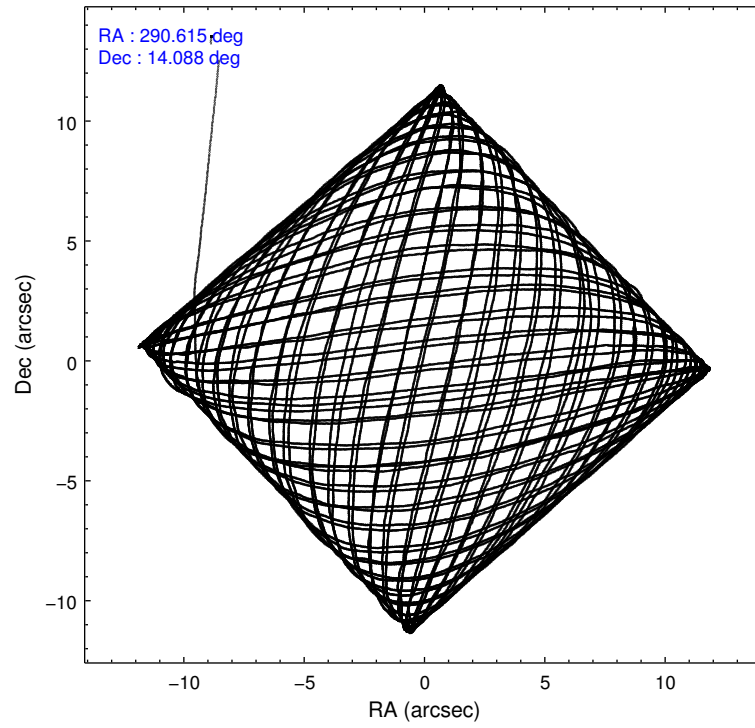
2.1.4 Events

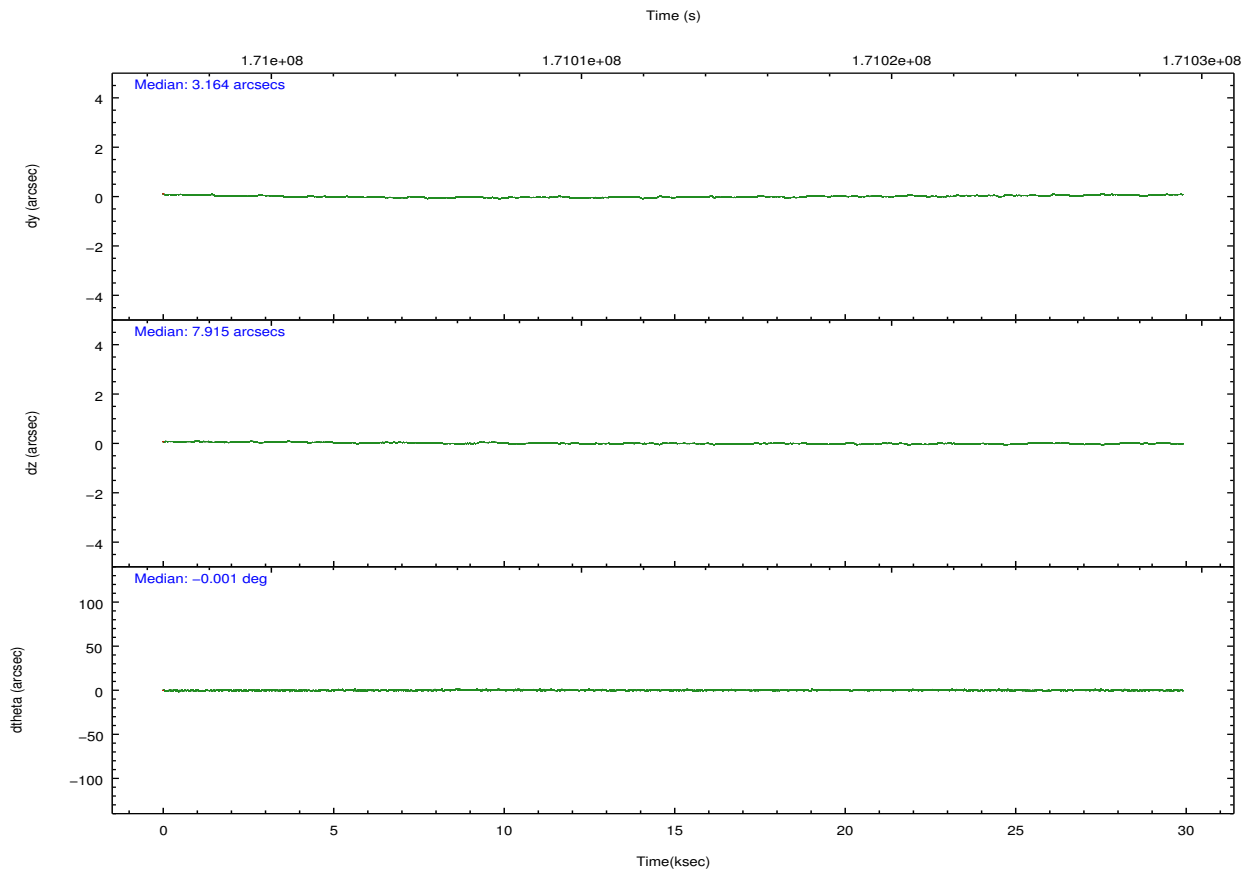
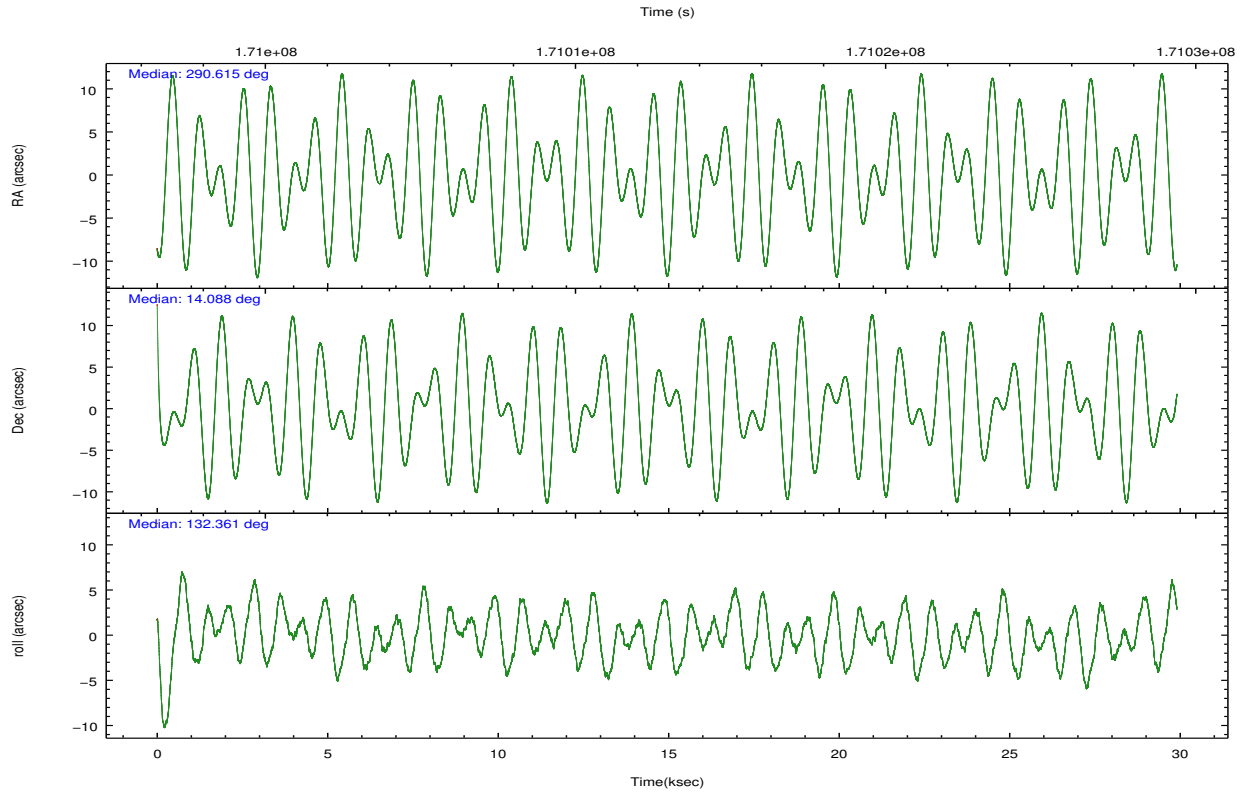
	ccd 0	ccd 1	ccd 2	ccd 3	ccd 6	ccd 8		ccd 0	ccd 1	ccd 2	ccd 3	ccd 6	ccd 8
level 1 events	142856	139149	164497	150645	151183	194924	grade 0 events	9072	9005	8647	7441	7424	13516
rejected events	123180	119375	145670	133757	133373	152333		6%	6%	5%	4%	4%	6%
rejected %	86%	85%	88%	88%	88%	78%	grade 1 events	84	68	98	86	65	109
								0%	0%	0%	0%	0%	0%
							grade 2 events	4076	3750	3842	3272	3574	9257
								2%	2%	2%	2%	2%	4%
							grade 3 events	1903	1940	1785	1771	1821	4800
								1%	1%	1%	1%	1%	2%
							grade 4 events	1727	1972	1781	1744	1809	4358
								1%	1%	1%	1%	1%	2%
							grade 5 events	5167	5545	4901	5860	5879	8542
								3%	3%	2%	3%	3%	4%
							grade 6 events	3040	3315	2901	2815	3331	11076
								2%	2%	1%	1%	2%	5%
							grade 7 events	117787	113554	140542	127656	127280	143266
								82%	81%	85%	84%	84%	73%

2.2 Compared Parameters

Parameter	Planned	Actual	Parameter	Planned	Actual
Instrument	ACIS	ACIS	Obspar format version number	7	7
Detector	ACIS-012368	ACIS-012368	Obspar file type	PREDICTED	ACTUAL
Grating	NONE	NONE	Obspar update status	NONE	UPDATED
Data mode	VFAINT	VFAINT	Number of optional ACIS chips dropped	0	0
Observation mode	POINTING	POINTING	On-chip summing requested	N	N
[deg] Pointing RA	290.642018	290.6150803366081	Subarray requested	NONE	NONE
[deg] Pointing Dec	14.079511	14.08768521383956	Alternating exposures requested	N	N
[deg] Pointing Roll	132.148458	132.3637041032658	[s] Primary exposure time	0.000000	3.2
[mm] SIM focus pos	-0.782348	-0.7809083437167272			
[mm] SIM defocus	0	0.001439871863259334			
[mm] SIM translation stage pos	-233.592463	-233.5874344608287			
[mm] SIM translation stage offset	0	-0.005018542100998502			
[s] Observation start time (MET)	170998186.184000	170996993.58708			
Observation start date	2003-06-03T03:28:42	2003-06-03T03:09:53			
[s] Observation end time (MET)	171028186.184000	171028555.38842			
Observation end date	2003-06-03T11:48:42	2003-06-03T11:55:55			
Read mode	TIMED	TIMED			

2.3 Aspect



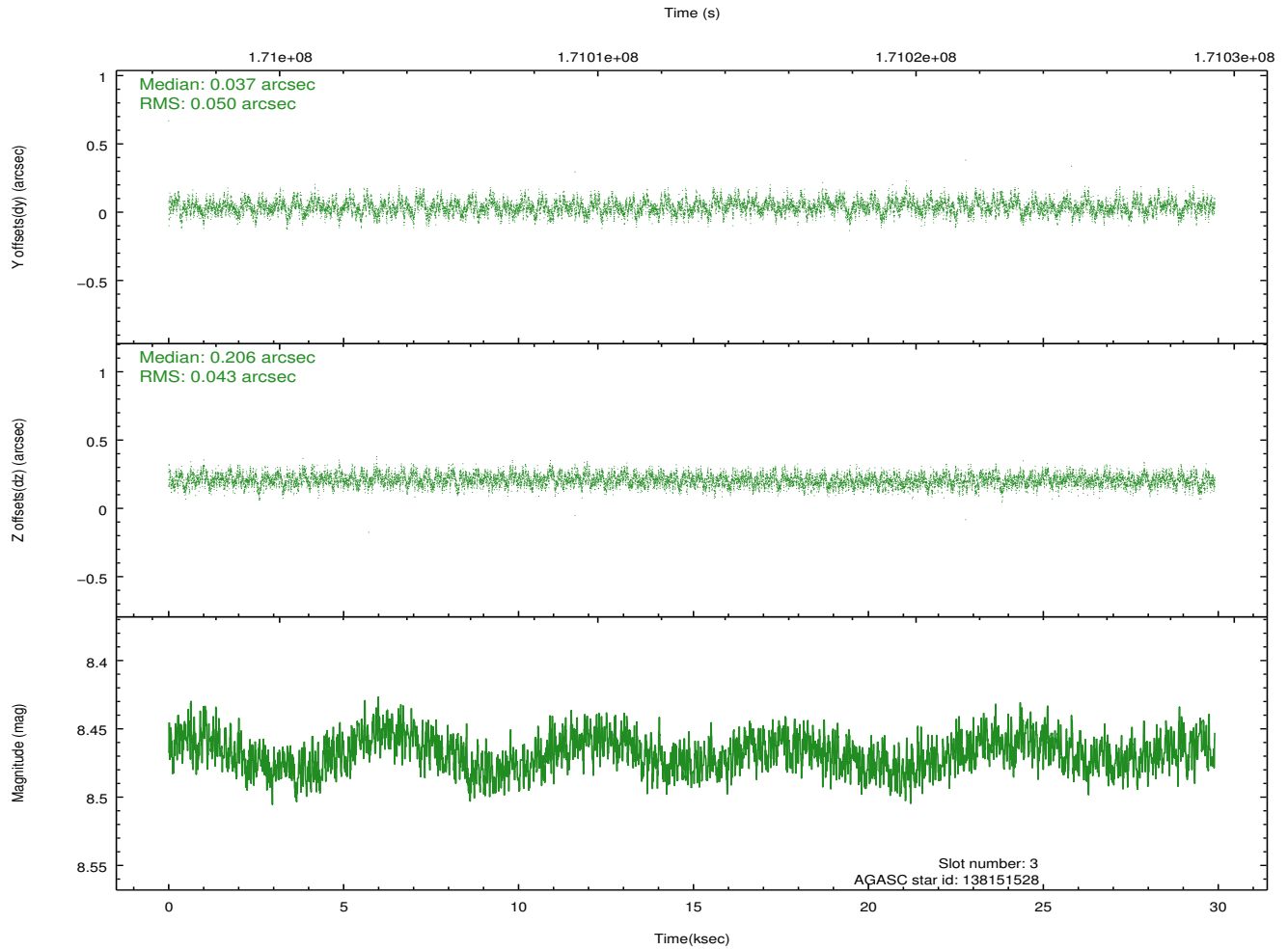
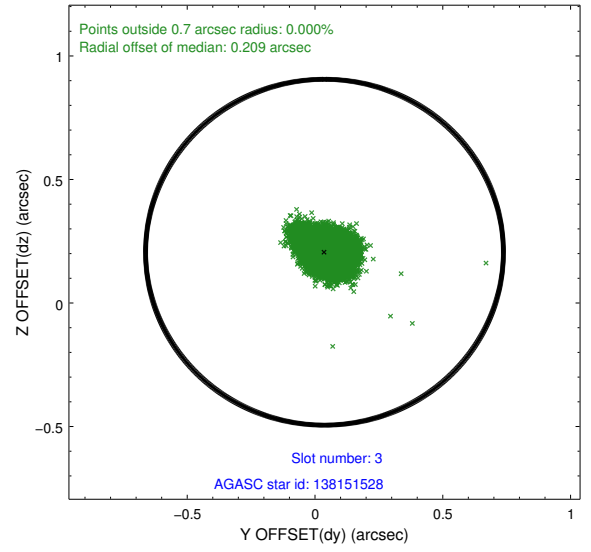
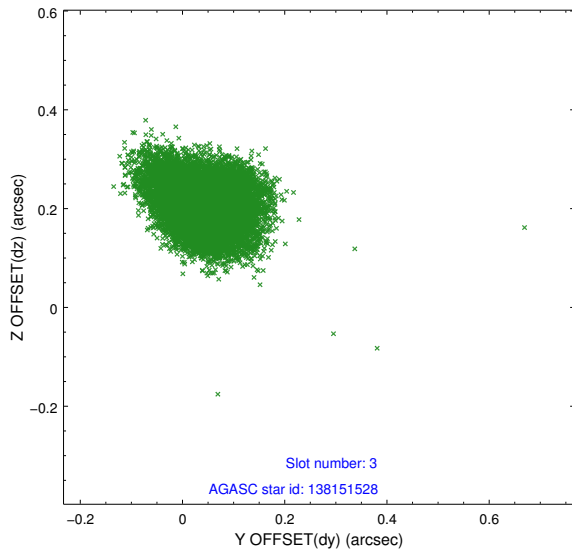


Slot Statistics

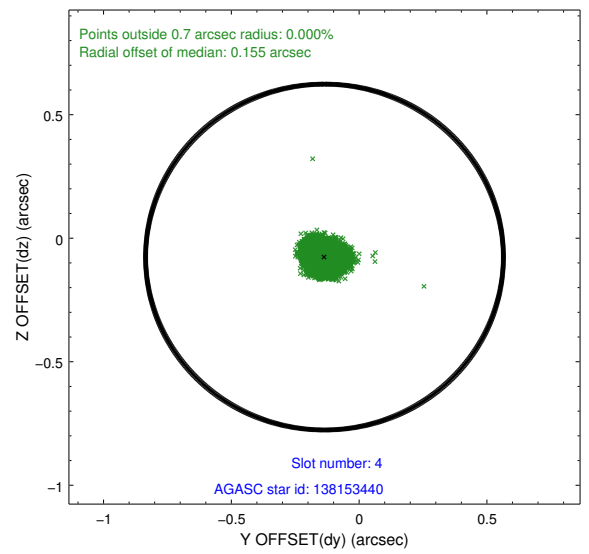
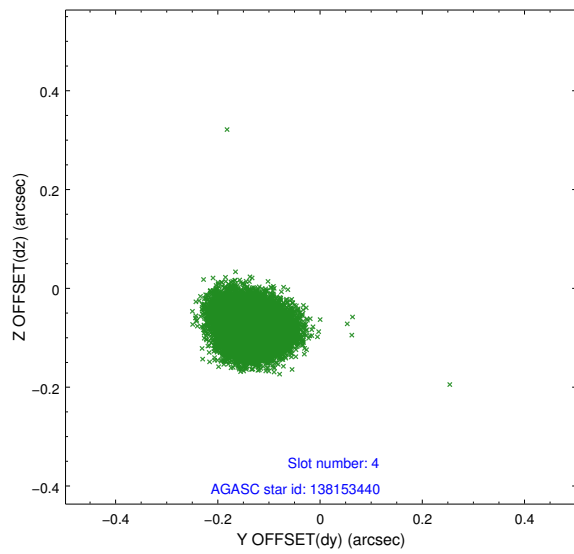
slot	status	id	mag	n_pts	med_dy	med_dz	dr1	dr2	ra	dec	mean_y	mean_z
0	FID	ACIS-I-1	7.24	7295	0.015	0.026	0.007	0.011	0.000000	0.000000	936.62	-831.32
1	FID	ACIS-I-5	7.24	7294	-0.106	0.055	0.006	0.011	0.000000	0.000000	-1811.54	1066.19
2	FID	ACIS-I-6	7.26	7294	0.000	-0.011	0.007	0.011	0.000000	0.000000	402.10	1710.69
3	GUIDE	138151528	8.47	14587	0.037	0.206	0.070	0.116	290.837831	14.713020	1233.74	-2035.72
4	GUIDE	138153440	7.67	14587	-0.135	-0.076	0.049	0.079	289.820856	14.177576	2188.71	1884.85
5	GUIDE	138155968	9.11	14582	0.109	0.002	0.096	0.156	290.713024	13.375477	-2045.83	1516.64
6	GUIDE	138156640	6.98	14589	-0.273	-0.070	0.042	0.067	290.170188	14.419089	2011.11	398.53
7	GUIDE	138161256	9.29	14584	0.261	-0.057	0.107	0.176	290.800162	13.338467	-2349.21	1379.44

2.4 Star Slots

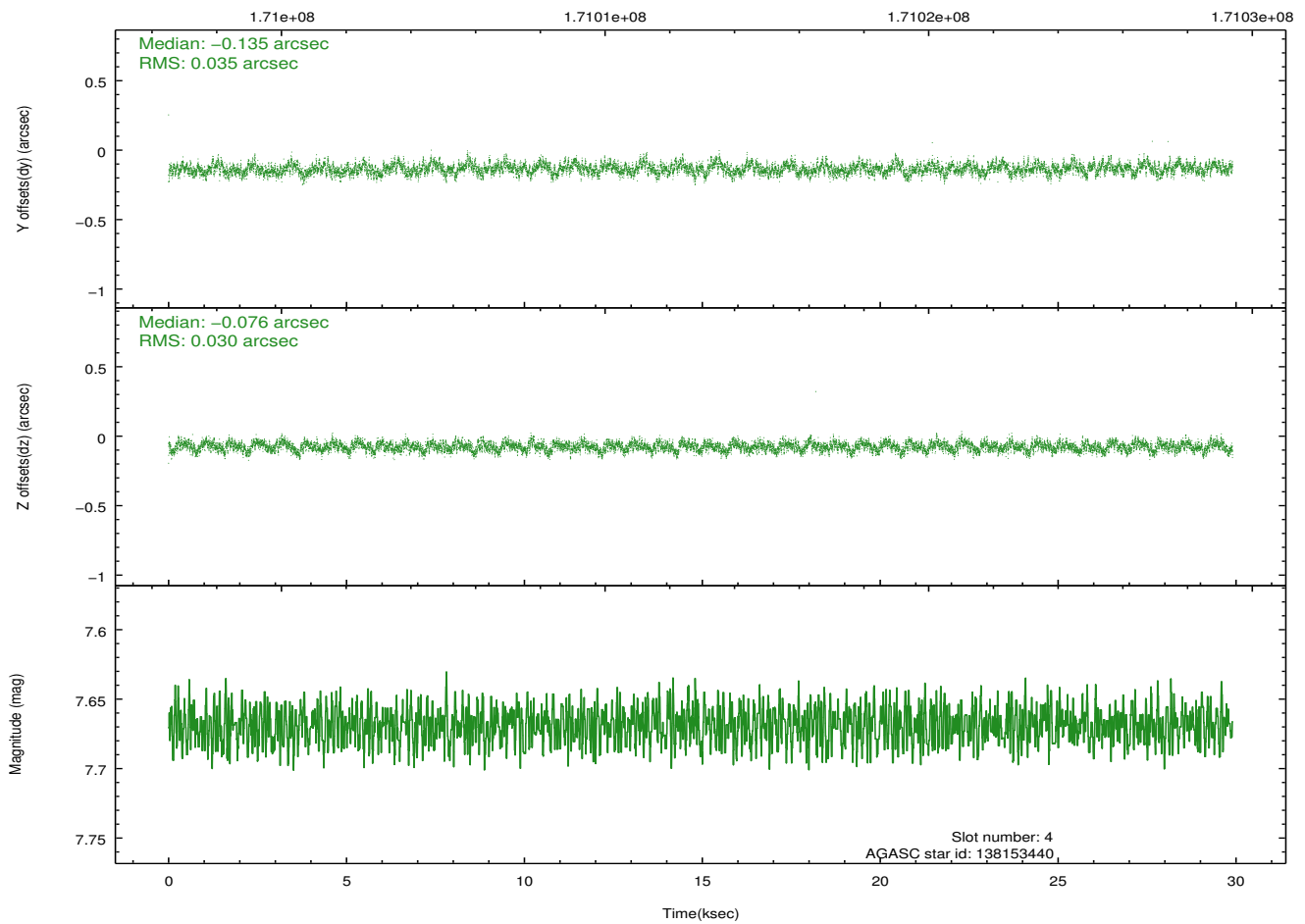
2.4.1 Slot 3



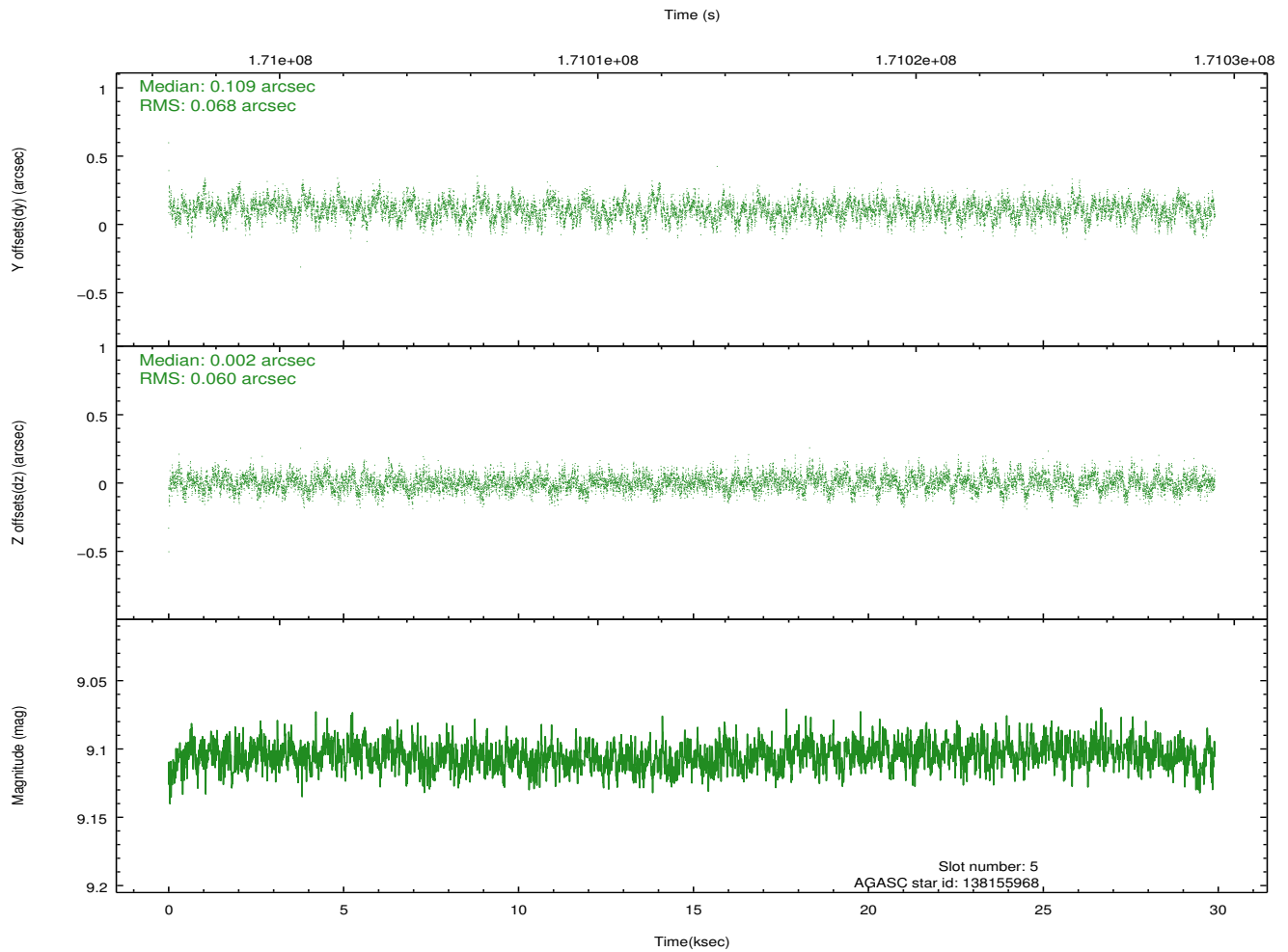
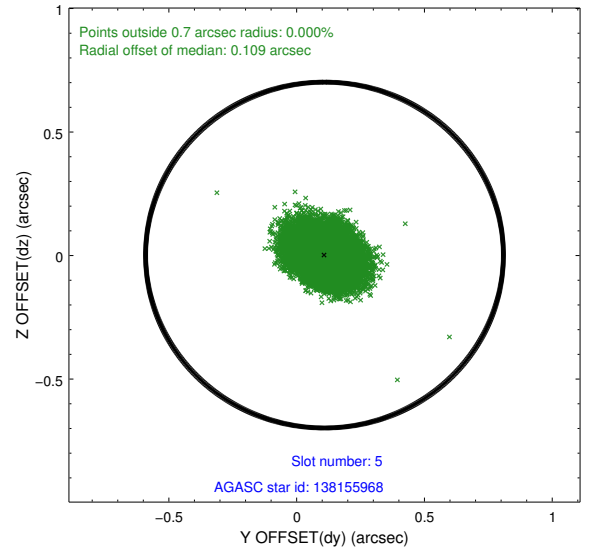
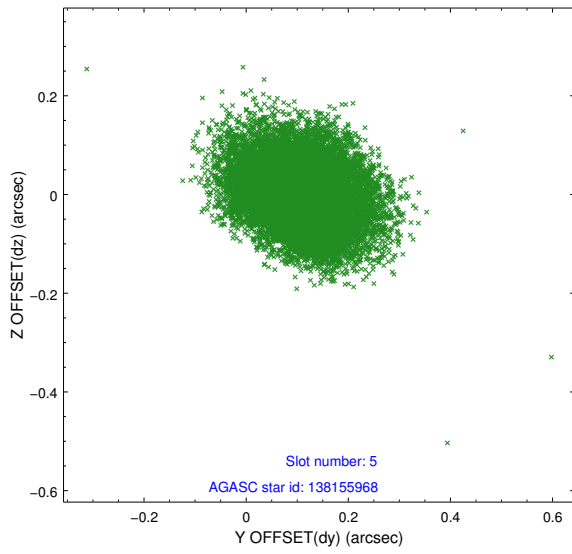
2.4.2 Slot 4



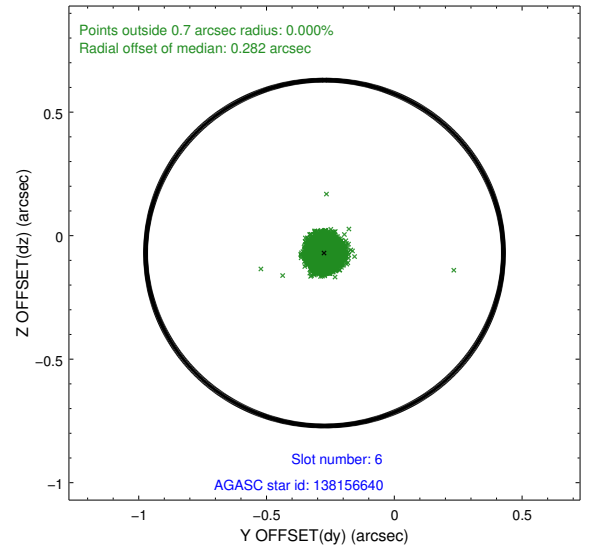
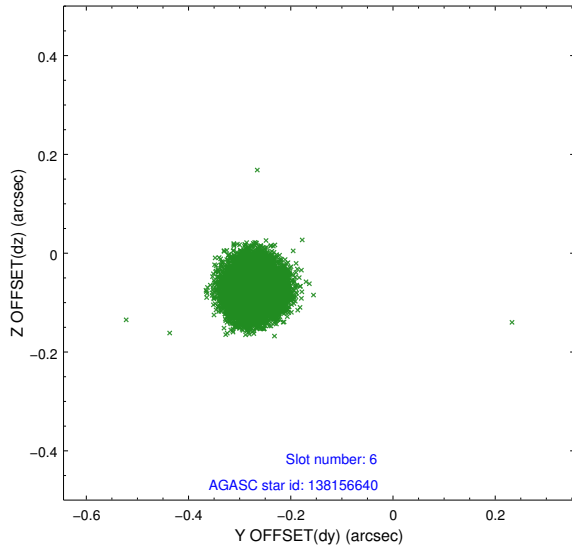
Time (s)



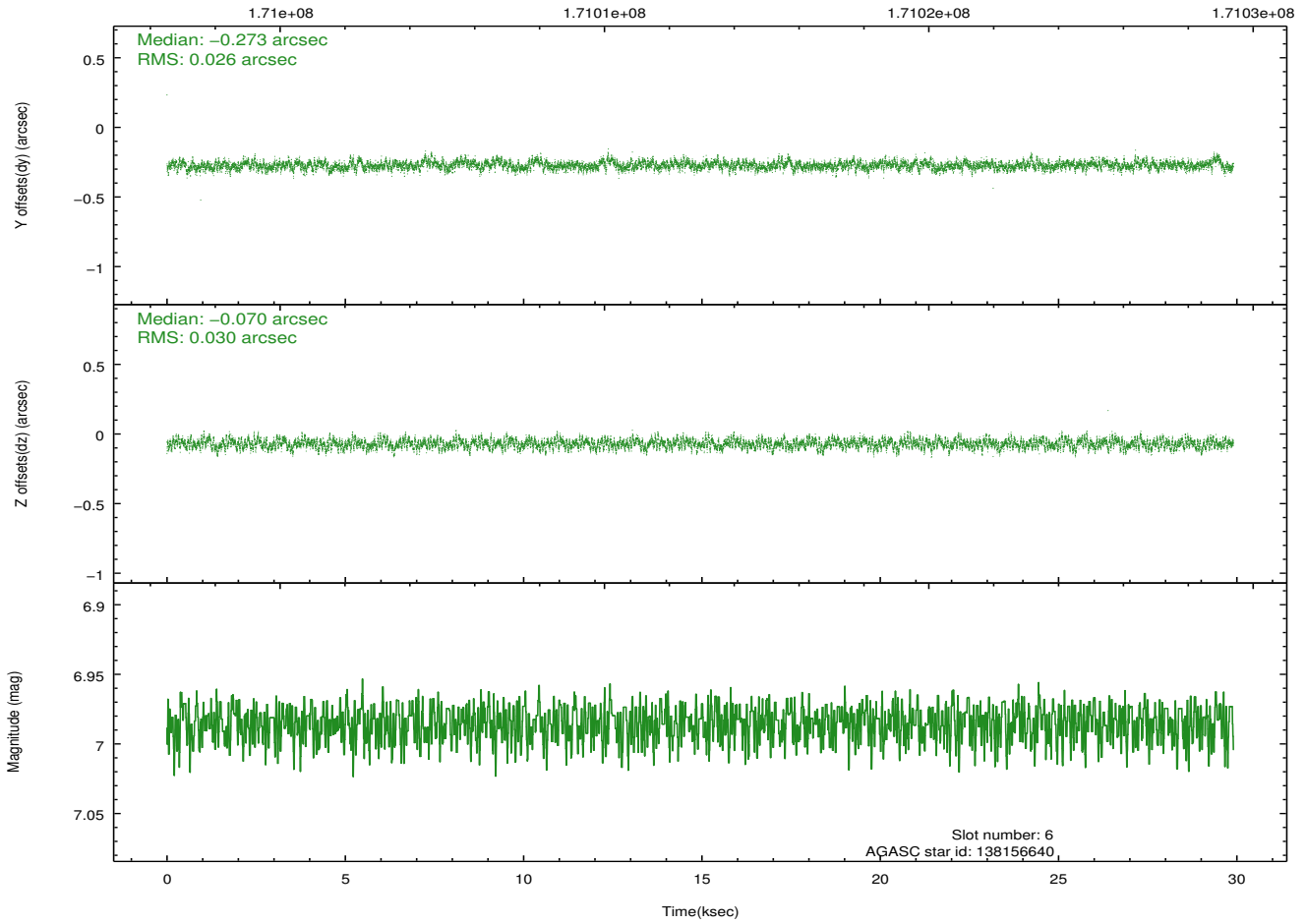
2.4.3 Slot 5



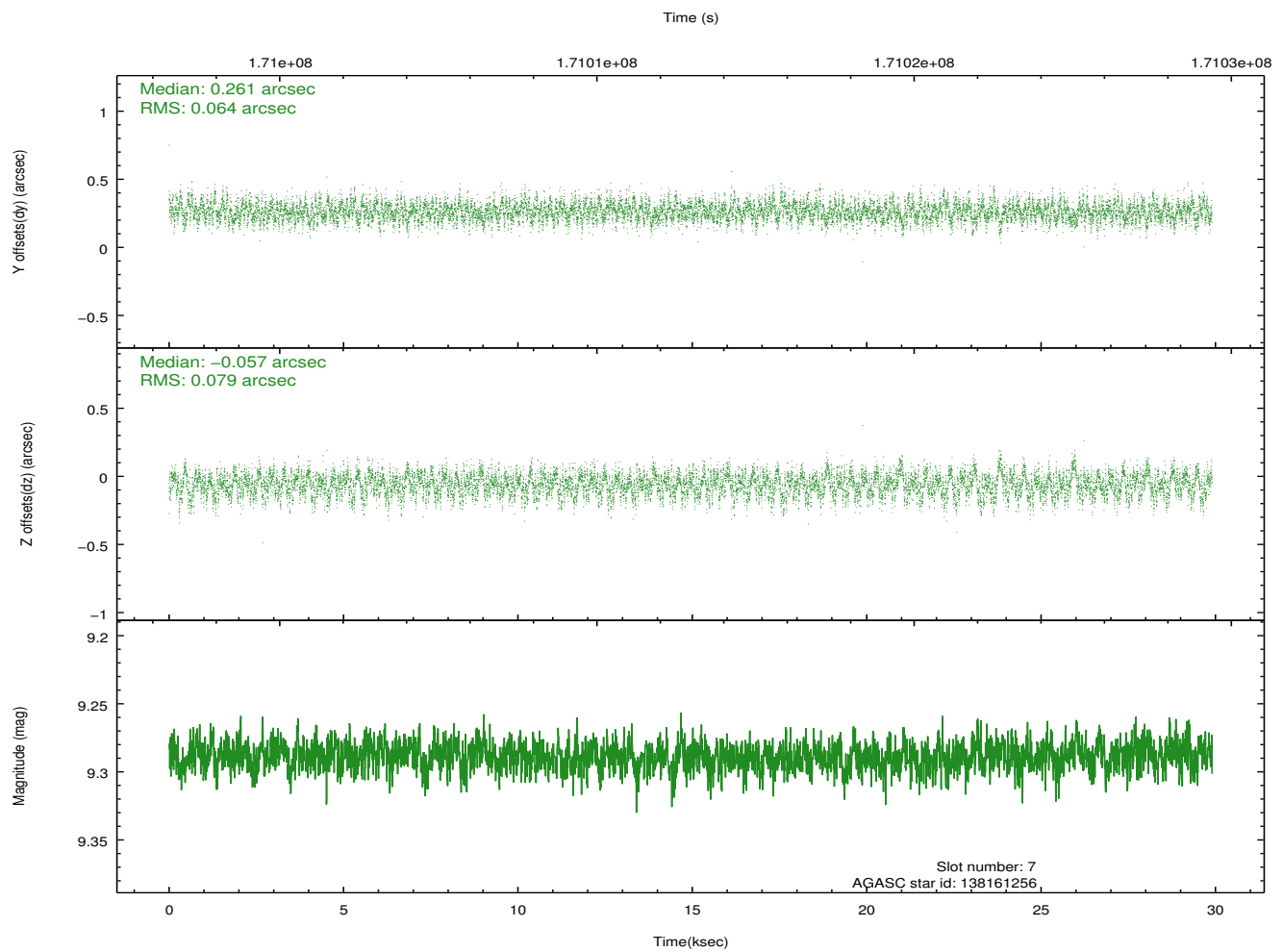
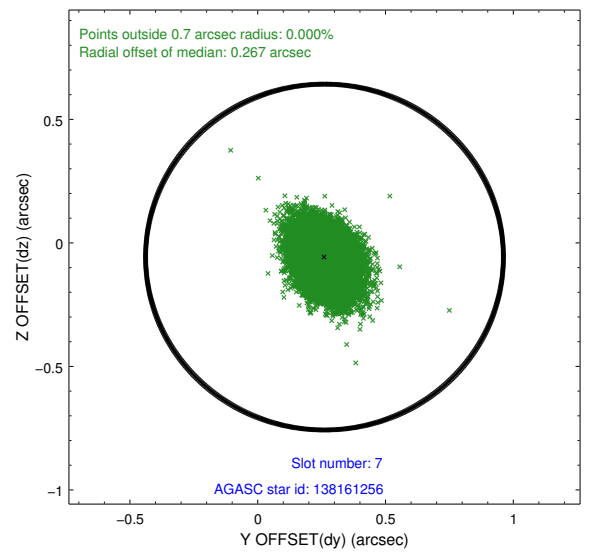
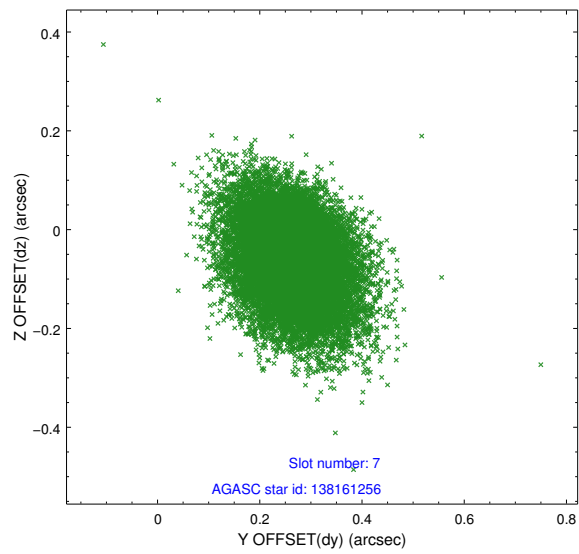
2.4.4 Slot 6



Time (s)

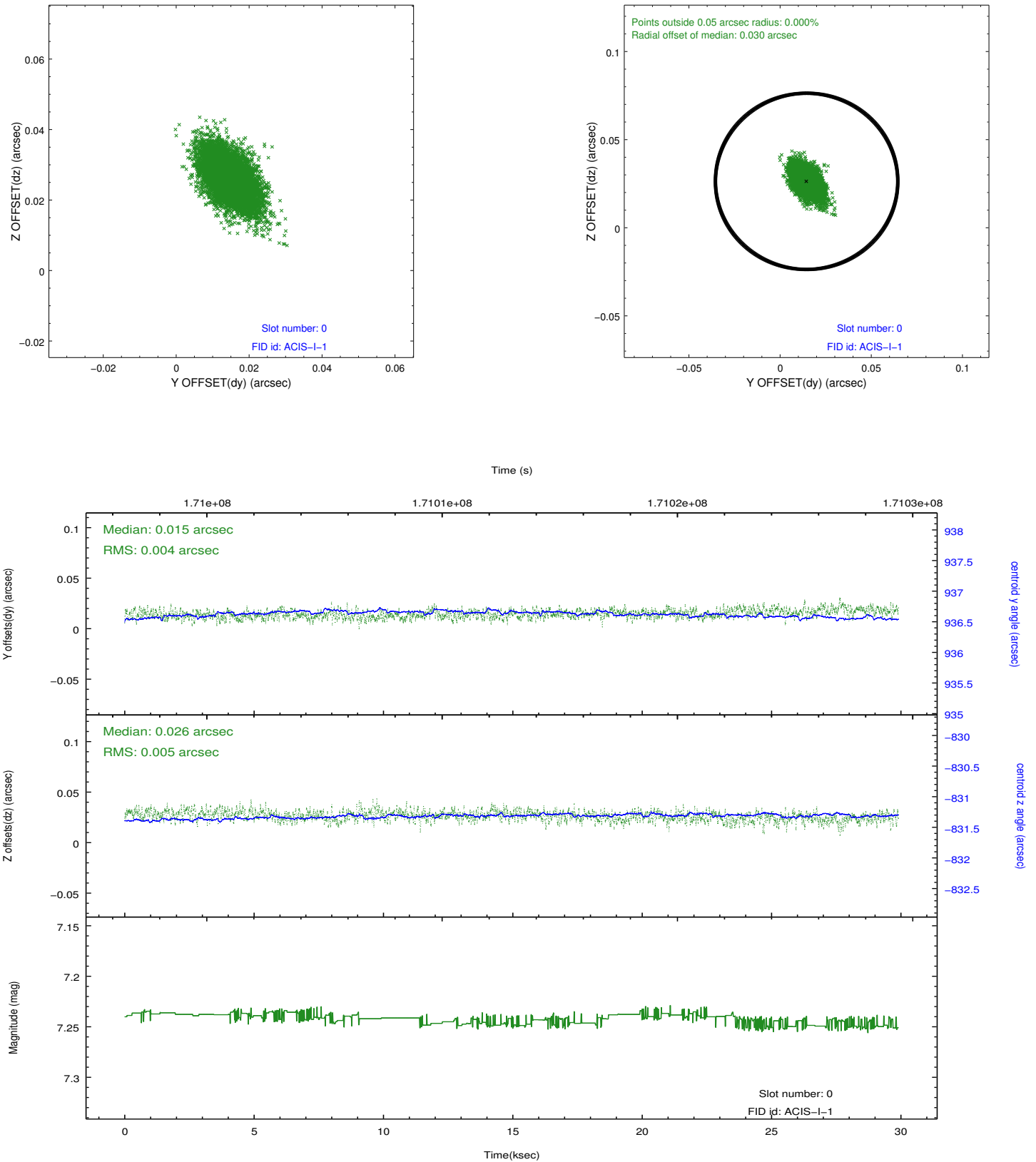


2.4.5 Slot 7

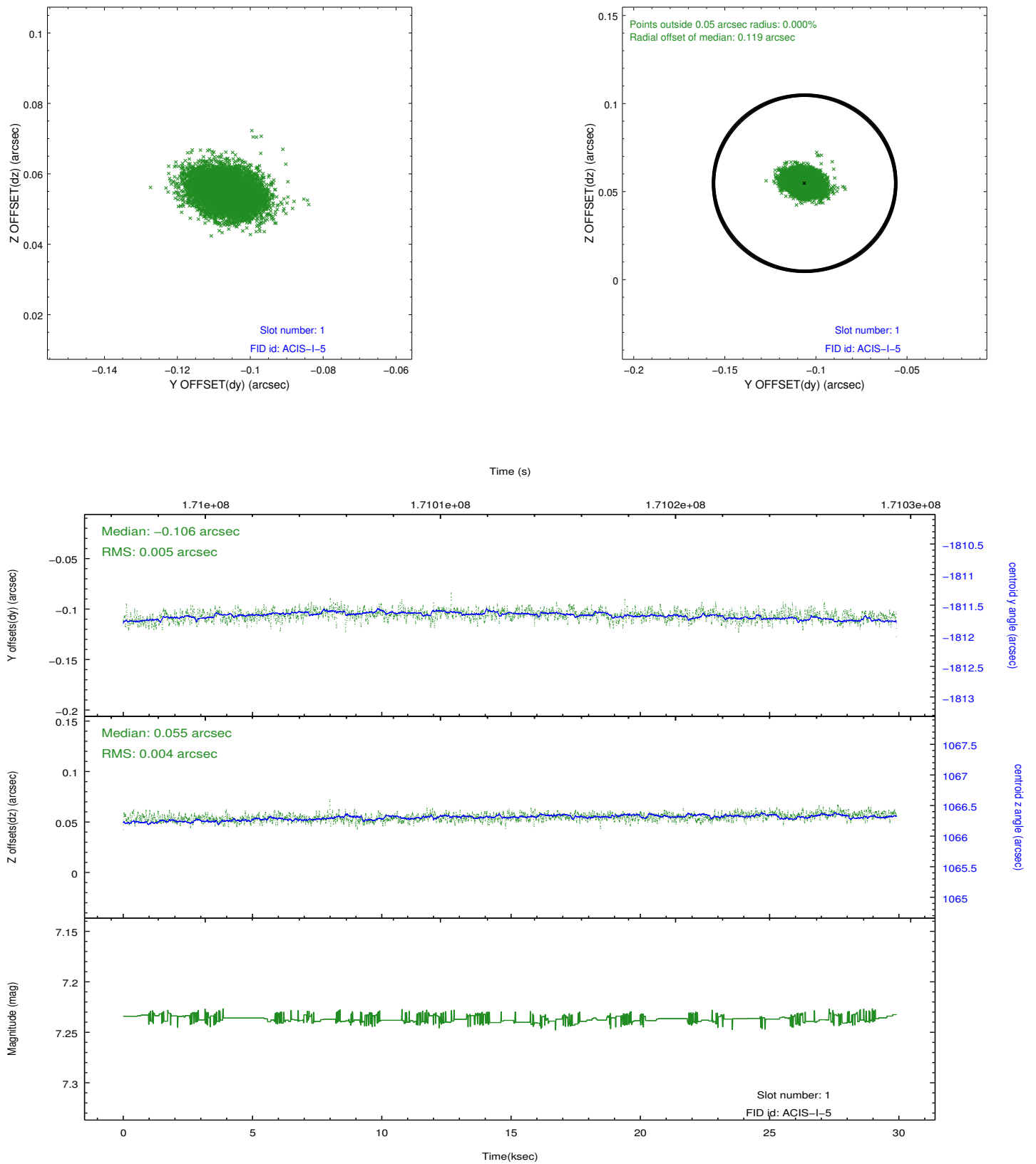


2.5 FID Slots

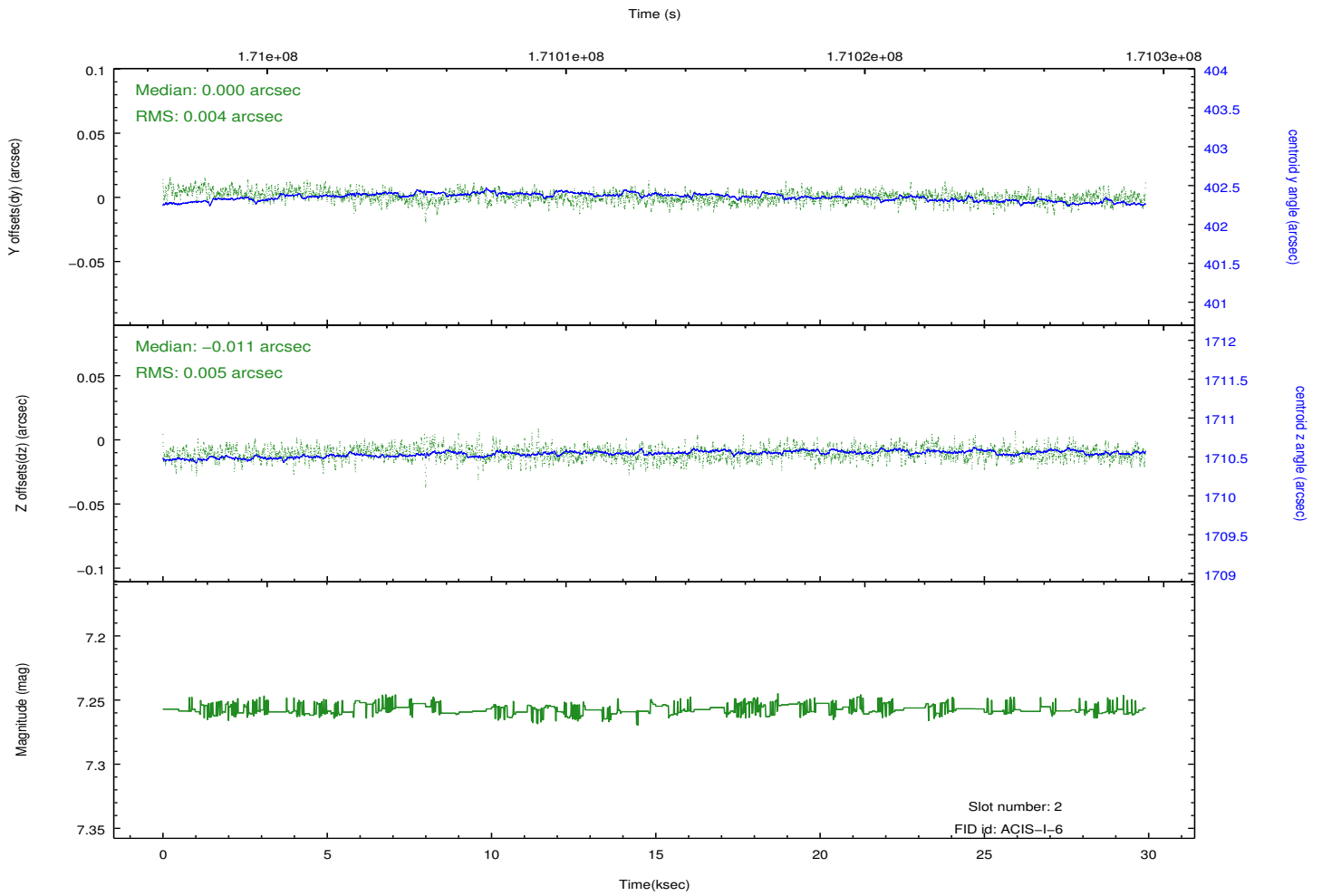
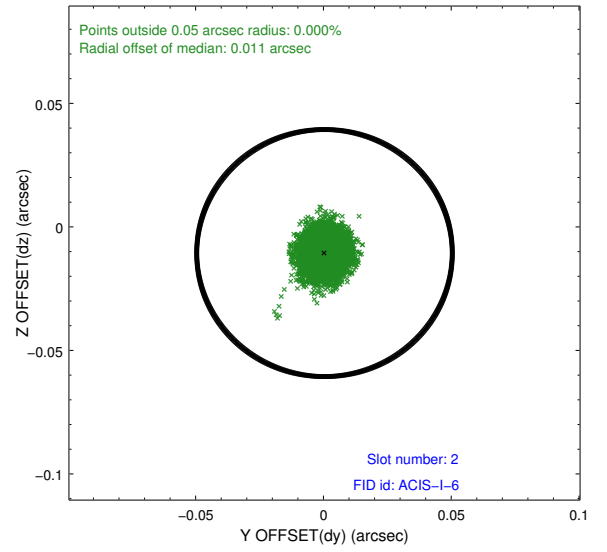
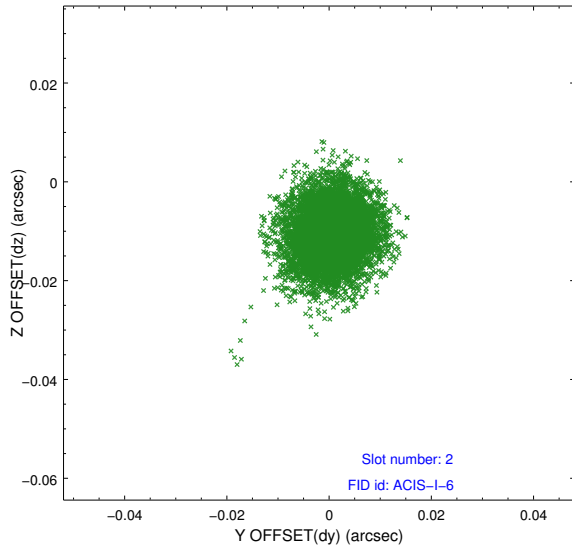
2.5.1 Slot 0



2.5.2 Slot 1



2.5.3 Slot 2



A Summary

A.1 Status

V&V Scientist	Beth Sundheim
V&V Date (YYYY-MM-DD)	2012.11.15
V&V Edition	1
V&V Disposition and Status	OK
V&V Charge Time	29.897

A.2 Comments