

V&V Reference Report

L2 ASCDS Version : 8.4.5

Observation 3899 - L2 Version 3
Chandra X-Ray Center

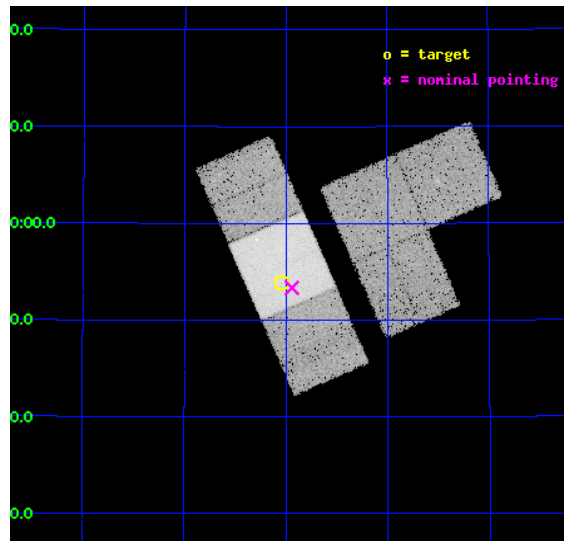
L2 Processing Date : Nov 5 2012

Contents

1	Front	2
2	OBI	3
2.1	OBI	3
2.1.1	Images	3
2.1.2	Bias	3
2.1.3	Parameters	4
2.1.4	Events	4
2.2	Compared Parameters	5
2.3	Aspect	6
2.4	Star Slots	9
2.4.1	Slot 3	9
2.4.2	Slot 4	10
2.4.3	Slot 5	11
2.4.4	Slot 6	12
2.4.5	Slot 7	13
2.5	FID Slots	14
2.5.1	Slot 0	14
2.5.2	Slot 1	15
2.5.3	Slot 2	16
A	Summary	17
A.1	Status	17
A.2	Comments	17

1 Front

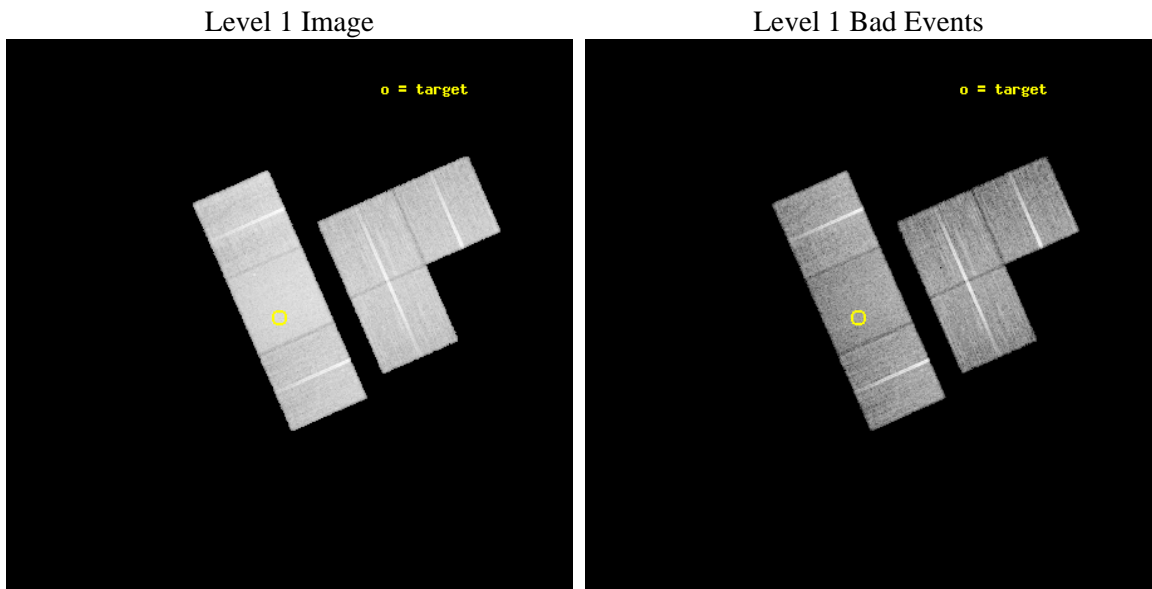
seq_num	500378	Sequence number
obs_id	3899	Observation id
title	EXPLORING THE ZOO OF NEUTRON STARS: HUNTING CGPS SNRS WITH CHANDRA	
observer	Prof. Samar Safi-Harb	Principal investigator
object	G85.9-0.6	Source name
dtcycle	0	
cycle	P	events from which exps? Prim/Second/Both
ra_targ	314.759167	Observer's specified target RA [deg]
dec_targ	44.898167	Observer's specified target Dec [deg]
ra_nom	314.73548712574	Nominal RA [deg]
dec_nom	44.889171291133	Nominal Dec [deg]
roll_nom	246.22019305452	Nominal Roll [deg]
revision	3	Processing version of data
ontime	20146.791263282	Sum of GTIs [s]
livetime	19891.680461365	Livetime [s]
ontime1	20143.591333002	Sum of GTIs [s]
ontime2	20146.627103299	Sum of GTIs [s]
ontime3	20143.468193084	Sum of GTIs [s]
ontime6	20146.750223279	Sum of GTIs [s]
ontime7	20146.791263282	Sum of GTIs [s]
ontime8	20146.668143272	Sum of GTIs [s]
l2events	164635	Number of level 2 events



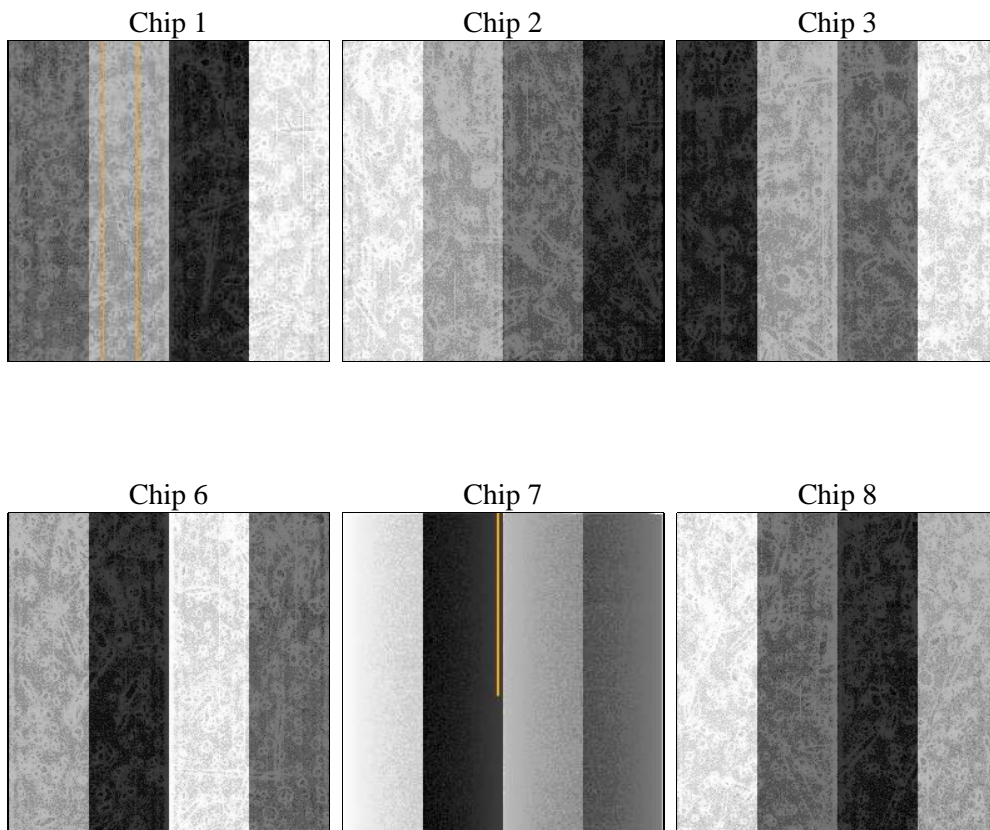
2 OBI

2.1 OBI

2.1.1 Images



2.1.2 Bias



2.1.3 Parameters

obi_num	0	Obi number	sched_exp_time	20000.000000	[s] Scheduled observation exposure time
ascdsver	8.4.5	Processing system revision	ontime	20146.791263282	Sum of GTIs [s]
caldbver	4.5.2	 	ontime1	20143.591333002	Sum of GTIs [s]
date	2012-11-05T02:50:02	Date and time of file creation	ontime2	20146.627103299	Sum of GTIs [s]
revision	3	Processing version of data	ontime3	20143.468193084	Sum of GTIs [s]
			ontime6	20146.750223279	Sum of GTIs [s]
			ontime7	20146.791263282	Sum of GTIs [s]
			ontime8	20146.668143272	Sum of GTIs [s]
			l1events	887660	Number of level 1 events

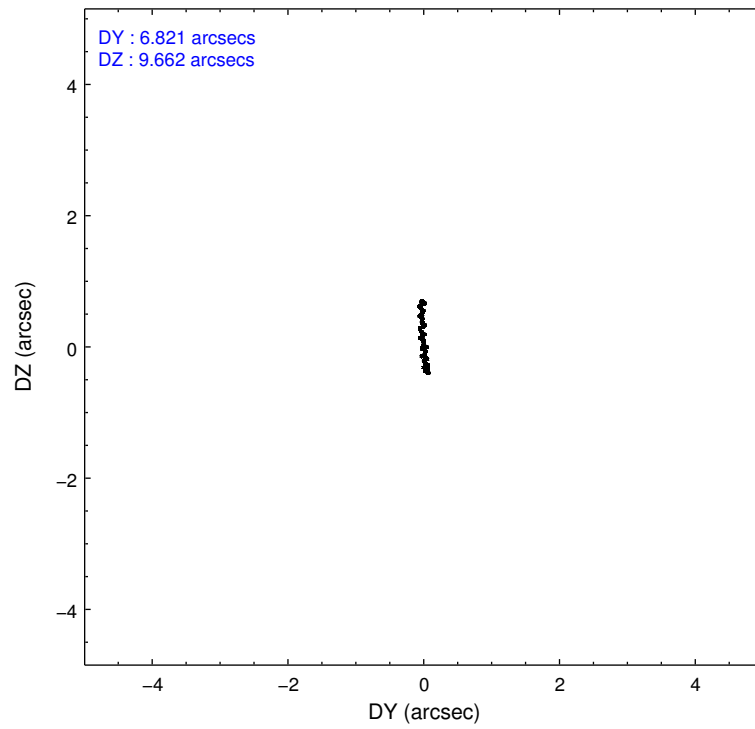
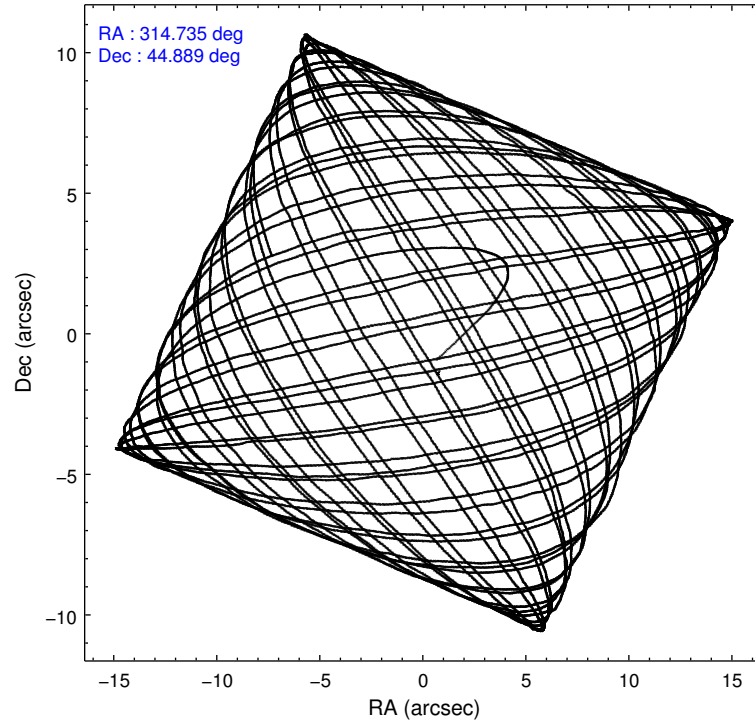
2.1.4 Events

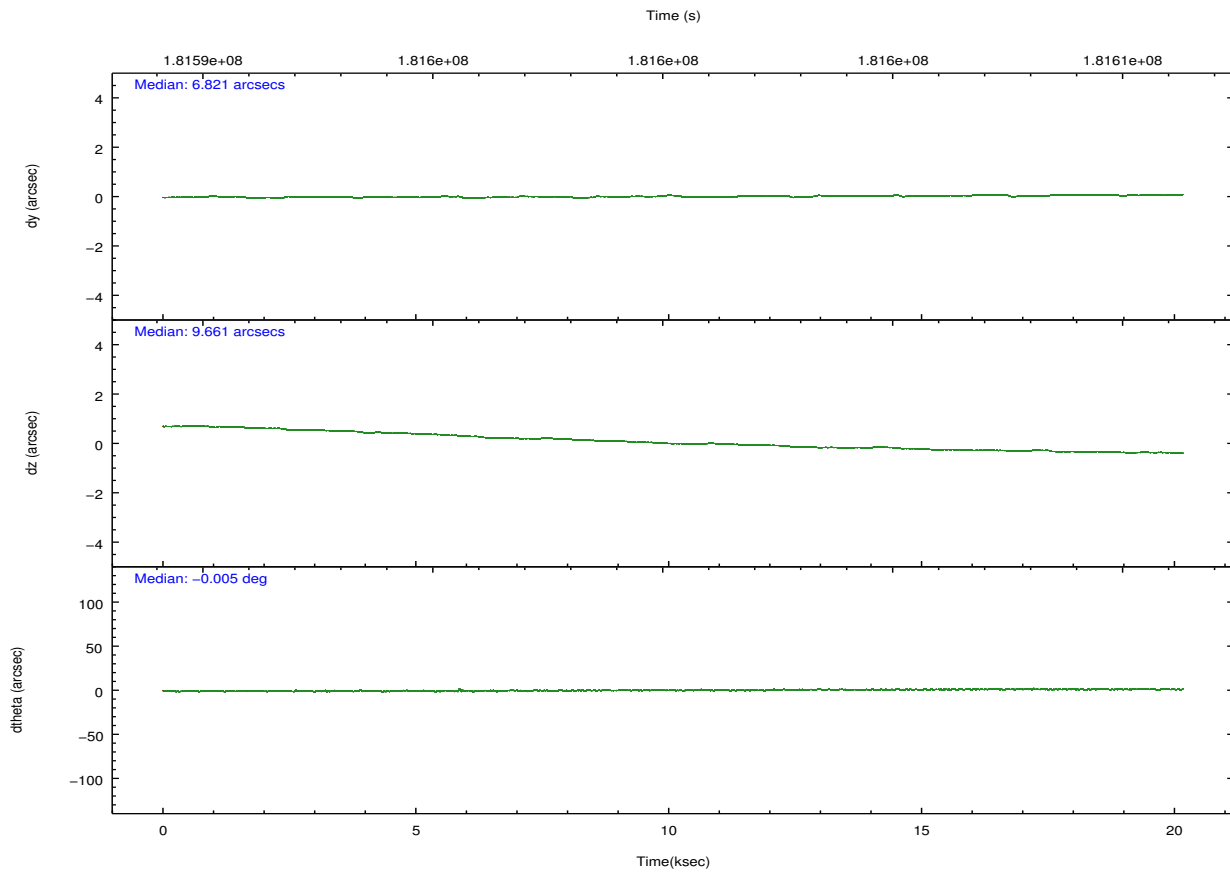
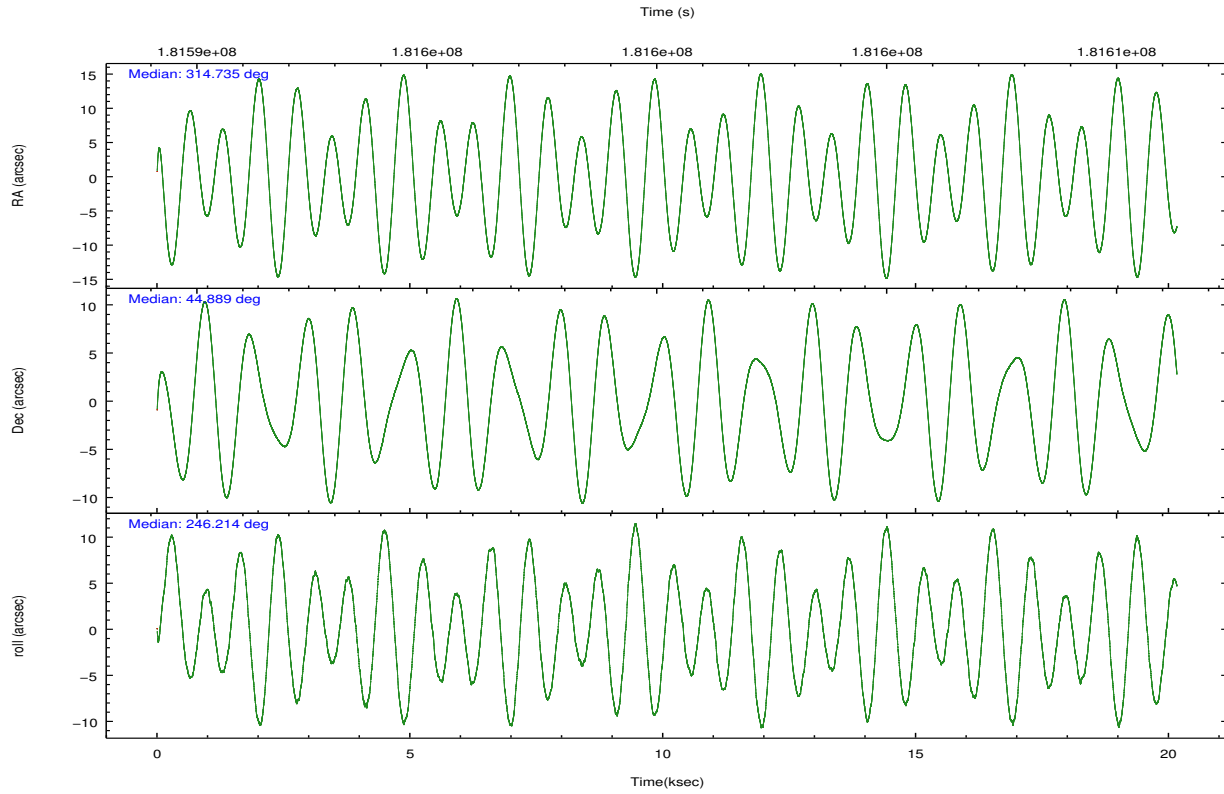
	ccd 1	ccd 2	ccd 3	ccd 6	ccd 7	ccd 8		ccd 1	ccd 2	ccd 3	ccd 6	ccd 7	ccd 8
level 1 events	123992	134117	131859	135011	193143	169538	grade 0 events	7351	7962	8098	9085	9473	12765
rejected events	106412	117602	115014	116027	105103	132709		5%	5%	6%	6%	4%	7%
rejected %	85%	87%	87%	85%	54%	78%	grade 1 events	74	92	78	67	151	118
								0%	0%	0%	0%	0%	0%
							grade 2 events	3700	3067	3030	3569	17630	8028
								2%	2%	2%	2%	9%	4%
							grade 3 events	1586	1518	1548	1616	8011	3544
								1%	1%	1%	1%	4%	2%
							grade 4 events	1663	1462	1500	1583	7934	3436
								1%	1%	1%	1%	4%	2%
							grade 5 events	5565	4963	5618	5966	17174	7797
								4%	3%	4%	4%	8%	4%
							grade 6 events	3285	2520	2675	3136	45015	9069
								2%	1%	2%	2%	23%	5%
							grade 7 events	100768	112533	109312	109989	87755	124781
								81%	83%	82%	81%	45%	73%

2.2 Compared Parameters

Parameter	Planned	Actual	Parameter	Planned	Actual
Instrument	ACIS	ACIS	Obspar format version number	7	7
Detector	ACIS-123678	ACIS-123678	Obspar file type	PREDICTED	ACTUAL
Grating	NONE	NONE	Obspar update status	NONE	UPDATED
Data mode	FAINT	FAINT	Number of optional ACIS chips dropped	0	0
Observation mode	POINTING	POINTING	On-chip summing requested	N	N
[deg] Pointing RA	314.730824	314.7354871257385	Subarray requested	NONE	NONE
[deg] Pointing Dec	44.916199	44.88917129113273	Alternating exposures requested	N	N
[deg] Pointing Roll	246.066864	246.2201930545241	[s] Primary exposure time	0.000000	3.2
[mm] SIM focus pos	-0.684267	-0.6828225247311905			
[mm] SIM defocus	0	0.001444936568705701			
[mm] SIM translation stage pos	-190.132523	-190.1425803651734			
[mm] SIM translation stage offset	0	0.01005778216563158			
[s] Observation start time (MET)	181590313.184000	181589256.40175			
Observation start date	2003-10-03T17:44:09	2003-10-03T17:27:36			
[s] Observation end time (MET)	181610313.184000	181611074.04019			
Observation end date	2003-10-03T23:17:29	2003-10-03T23:31:14			
Read mode	TIMED	TIMED			

2.3 Aspect



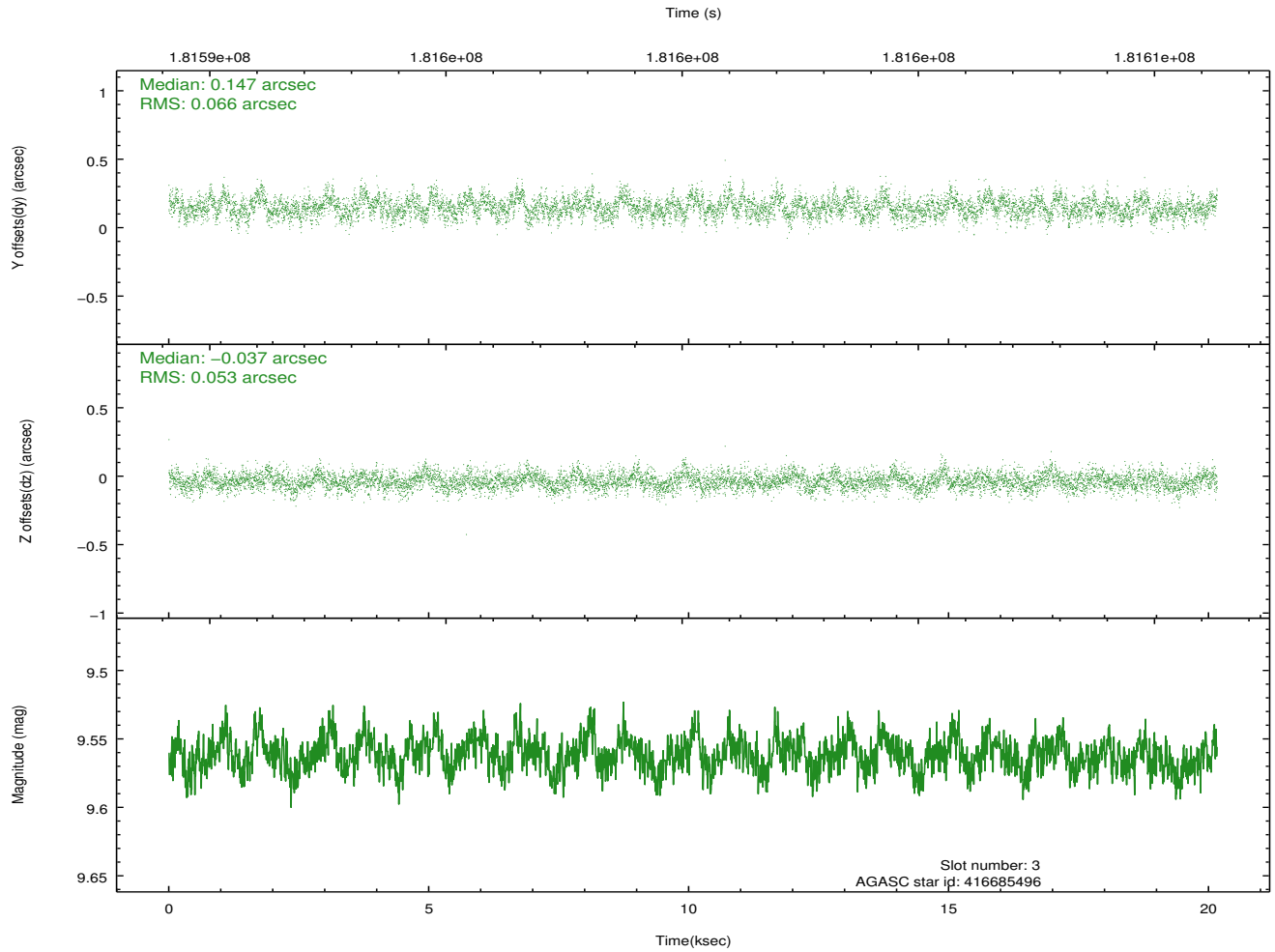
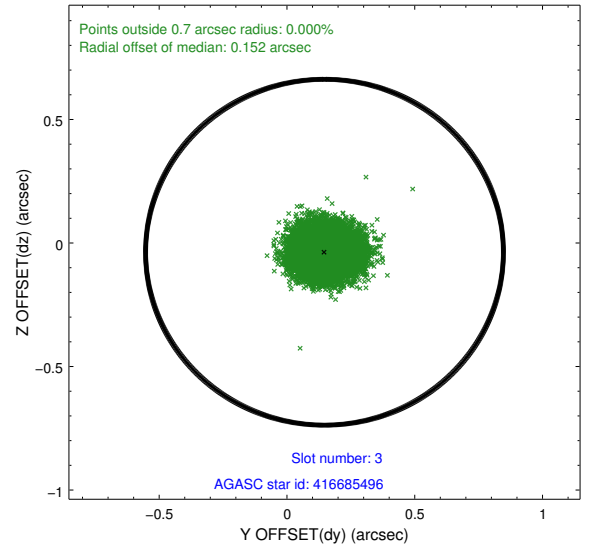
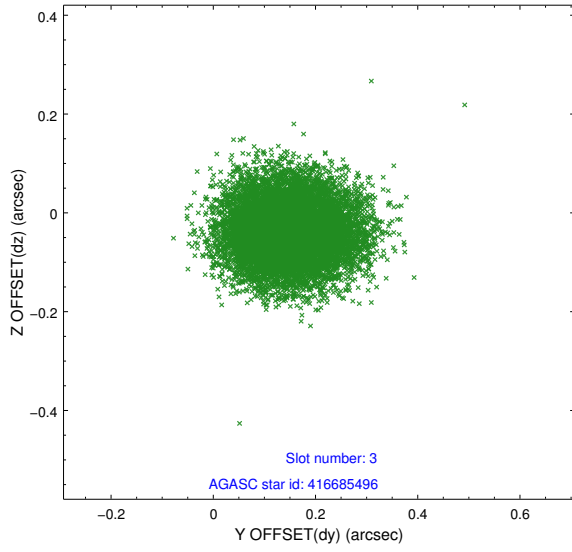


Slot Statistics

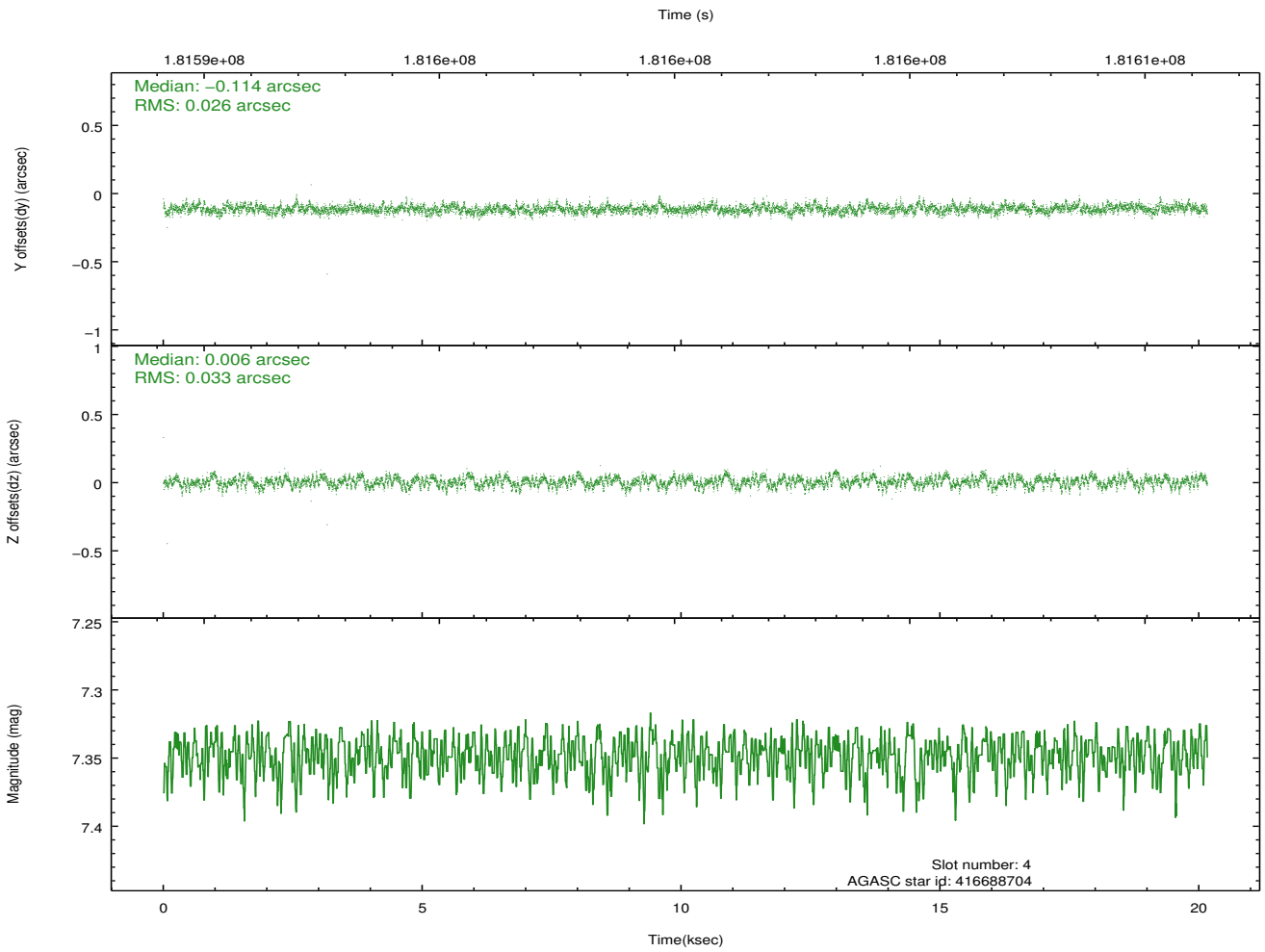
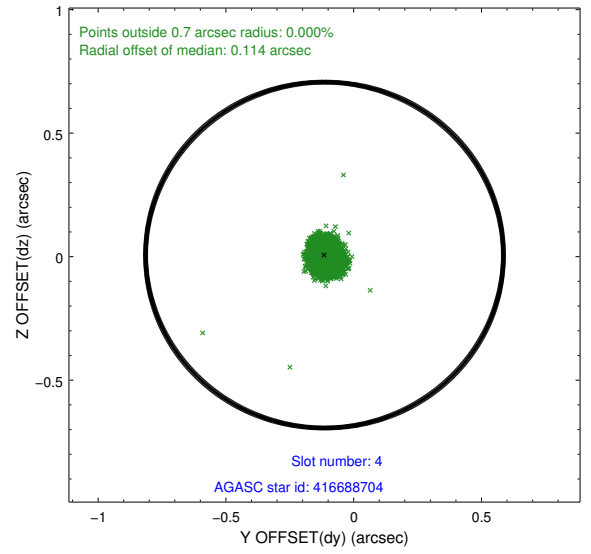
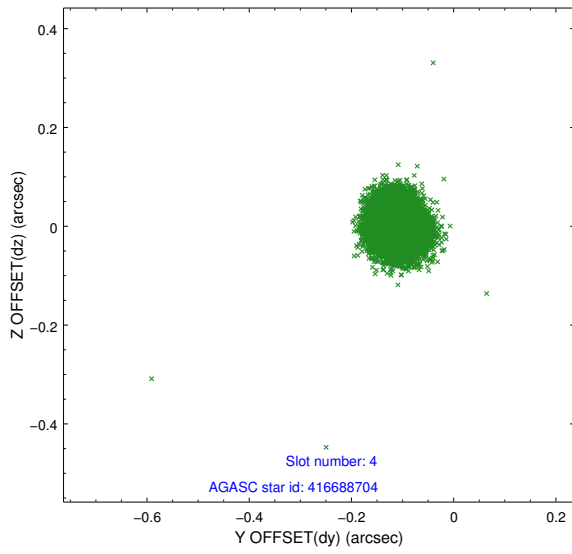
slot	status	id	mag	n_pts	med_dy	med_dz	dr1	dr2	ra	dec	mean_y	mean_z
0	FID	ACIS-S-2	7.10	4919	-0.051	-0.030	0.011	0.017	0.000000	0.000000	-759.60	-1730.97
1	FID	ACIS-S-4	7.20	4919	0.075	0.032	0.006	0.011	0.000000	0.000000	2153.69	177.43
2	FID	ACIS-S-5	7.23	4918	-0.055	0.006	0.012	0.018	0.000000	0.000000	-1812.23	171.23
3	GUIDE	416685496	9.56	9830	0.147	-0.037	0.090	0.146	314.752202	44.299872	2005.99	950.80
4	GUIDE	416688704	7.35	9837	-0.114	0.006	0.045	0.071	314.892883	44.226388	2100.15	1389.88
5	GUIDE	416809744	8.73	9834	-0.069	0.022	0.070	0.112	315.545239	44.944493	-944.25	1851.41
6	GUIDE	416810728	9.37	9829	0.039	0.010	0.086	0.144	315.236642	44.911429	-511.04	1184.35
7	GUIDE	416678376	9.10	9827	-0.005	-0.000	0.071	0.115	313.870446	44.869391	1034.32	-1942.36

2.4 Star Slots

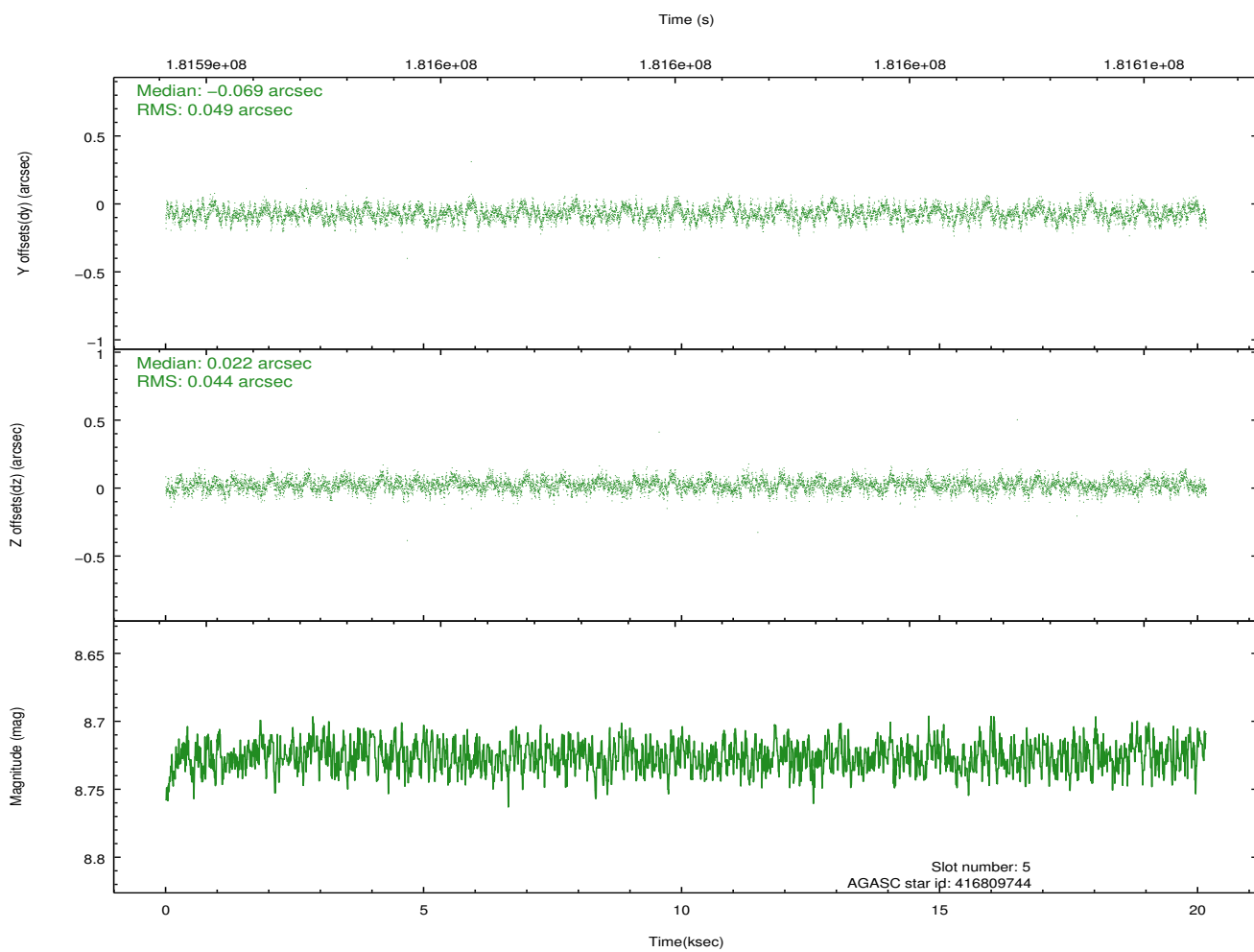
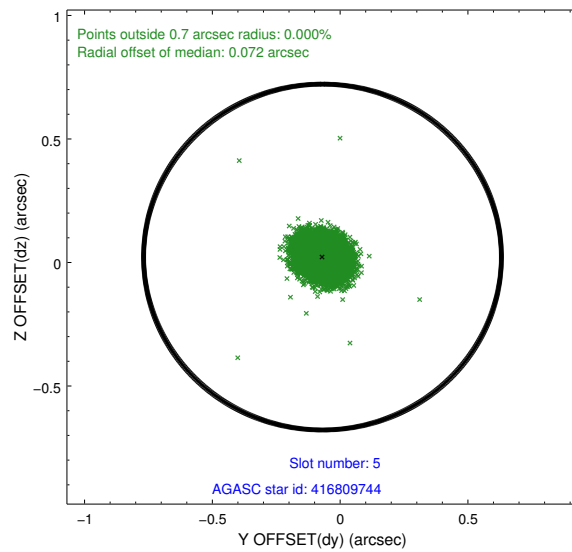
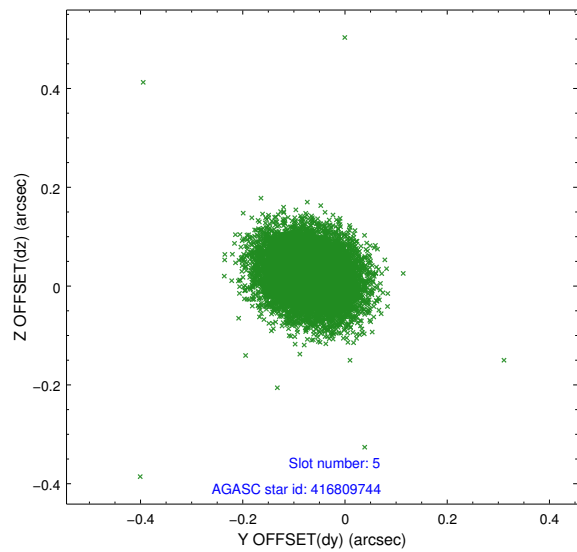
2.4.1 Slot 3



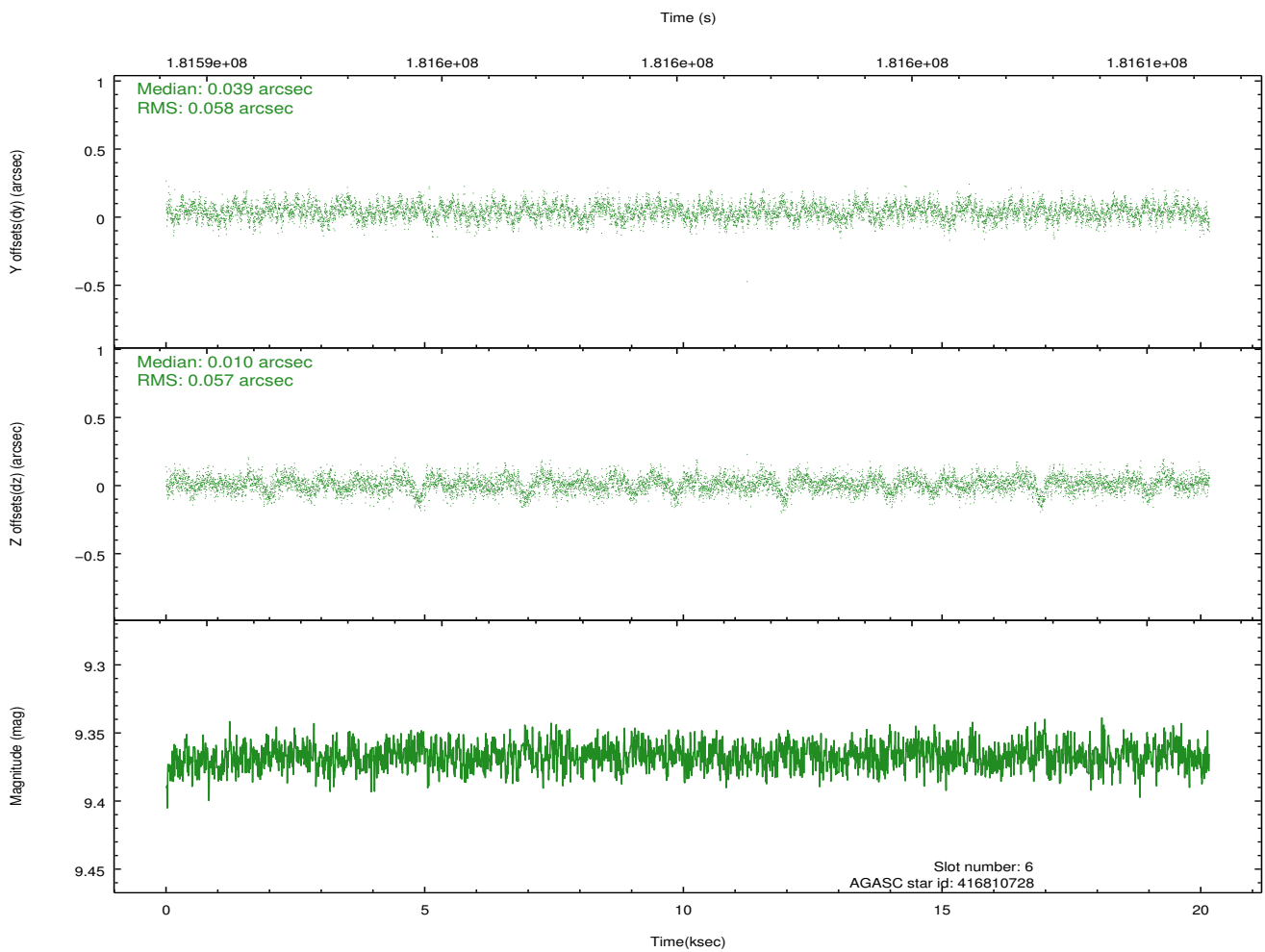
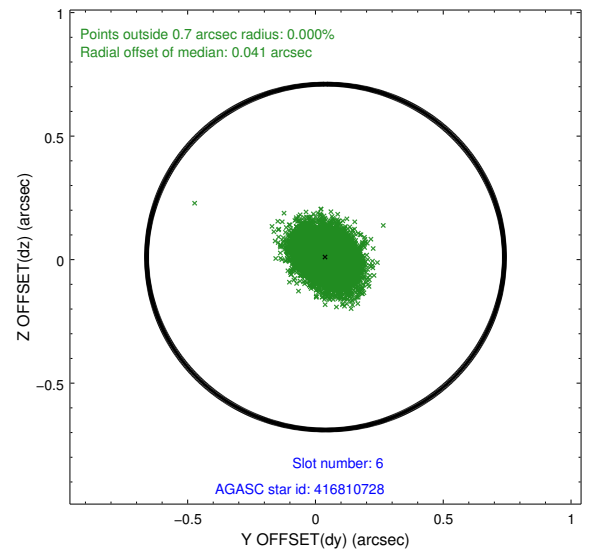
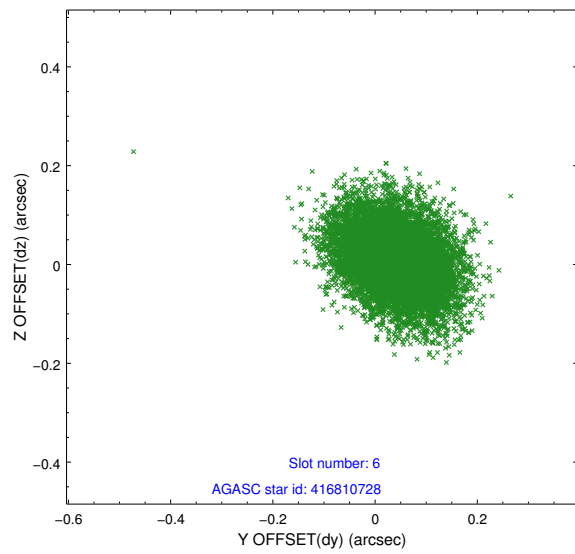
2.4.2 Slot 4



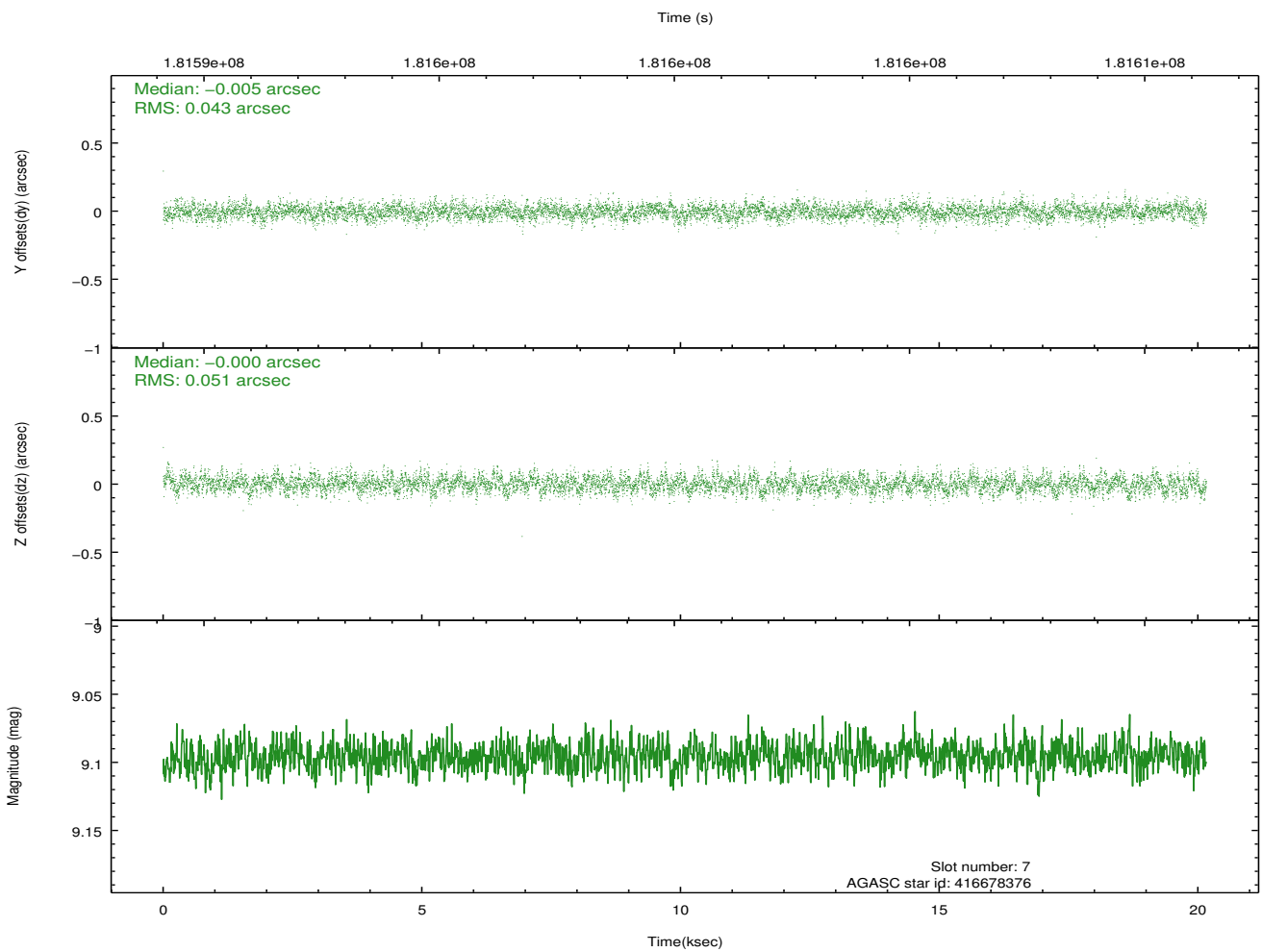
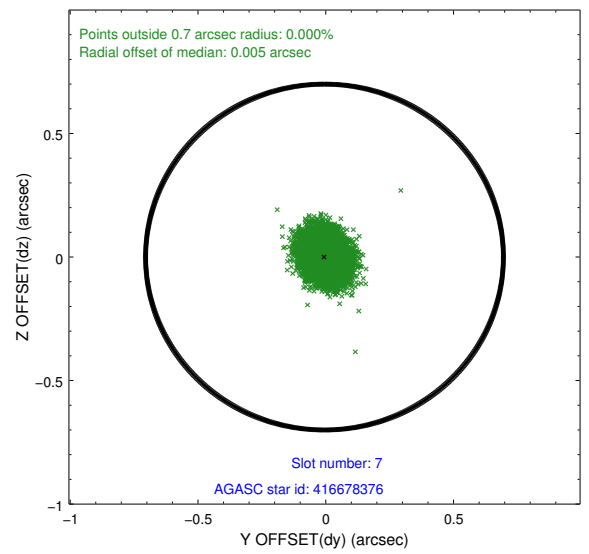
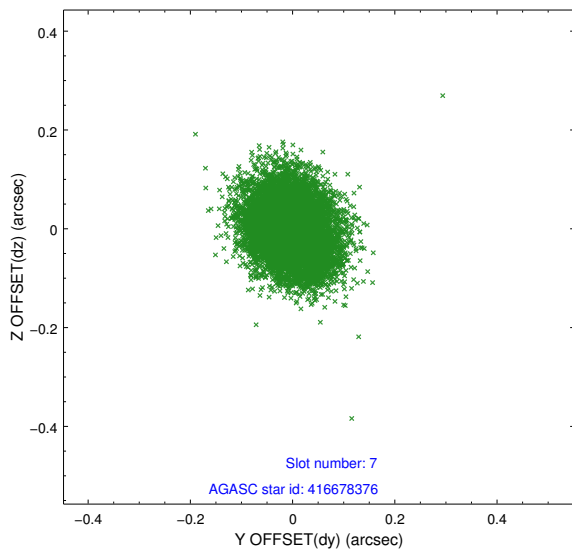
2.4.3 Slot 5



2.4.4 Slot 6

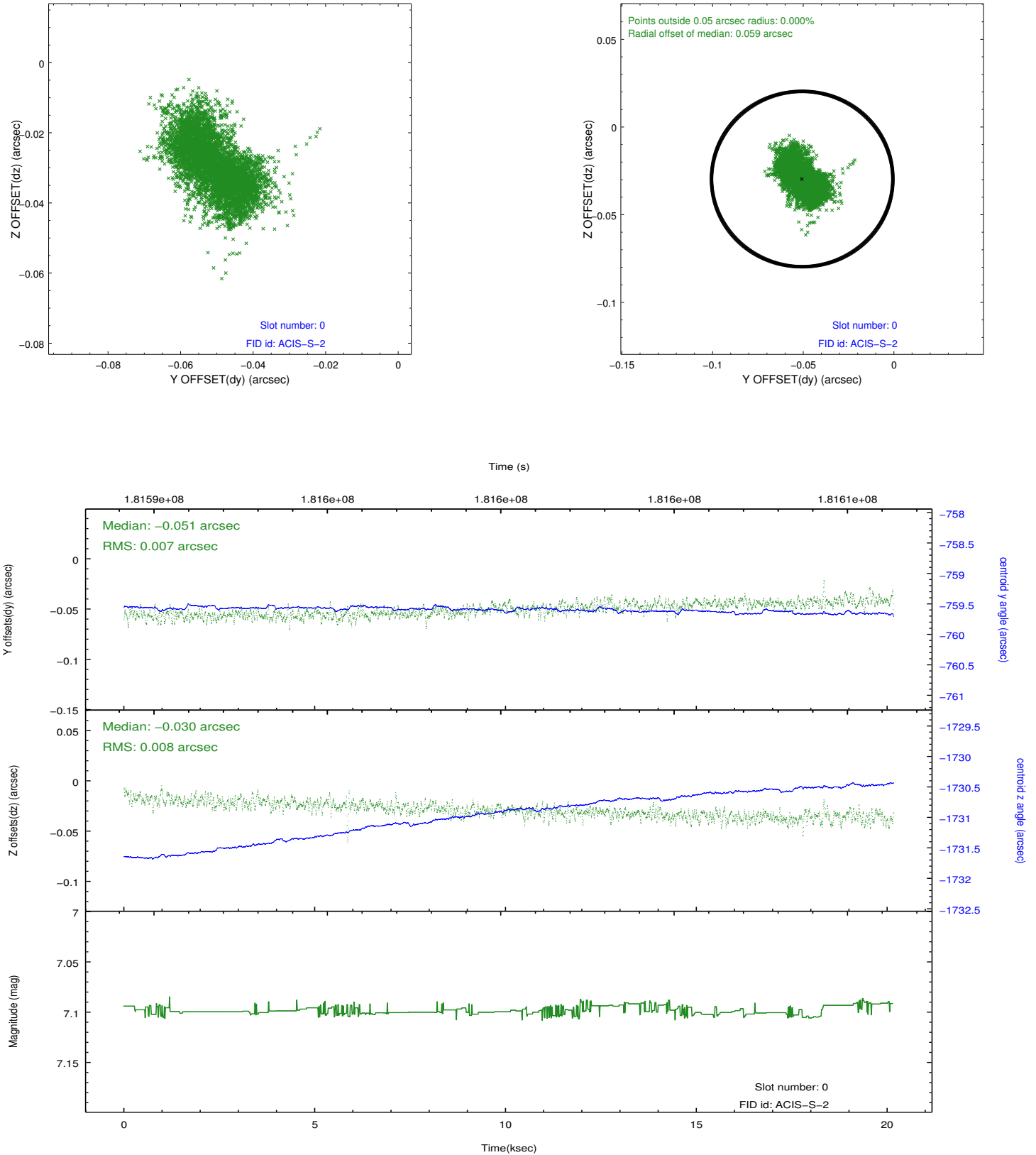


2.4.5 Slot 7

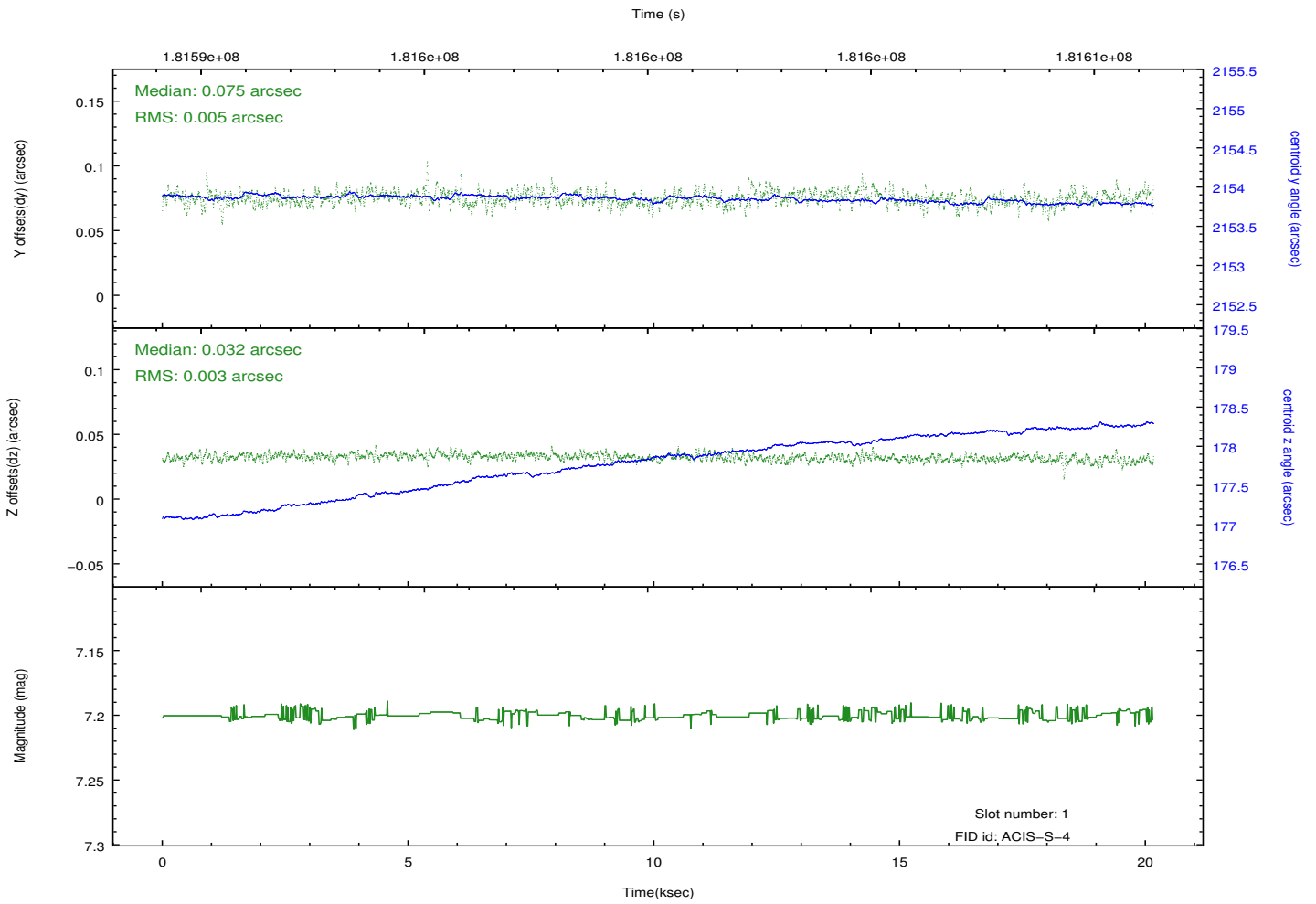
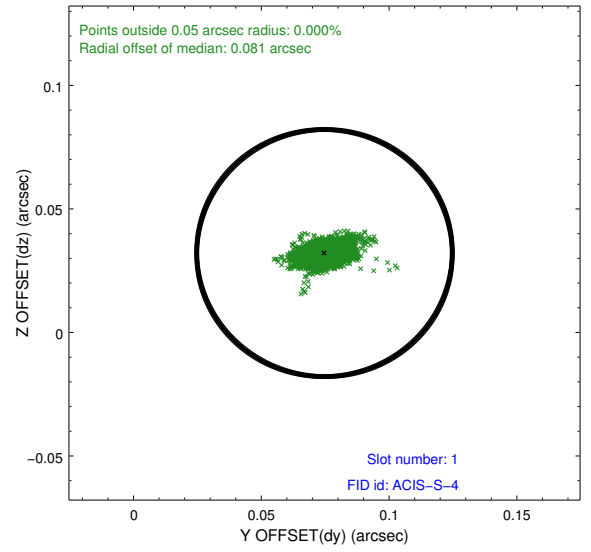
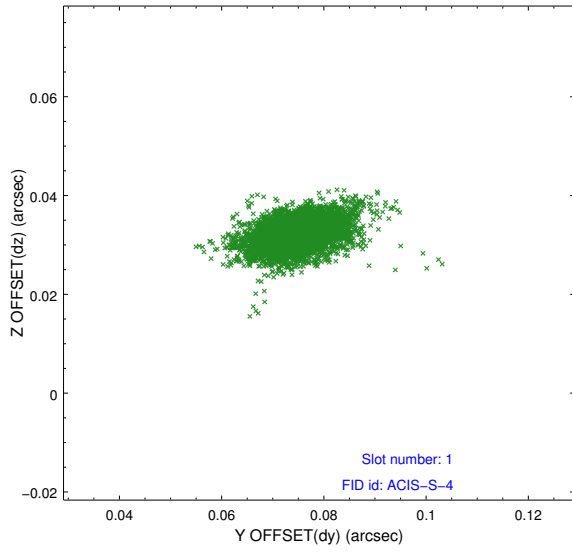


2.5 FID Slots

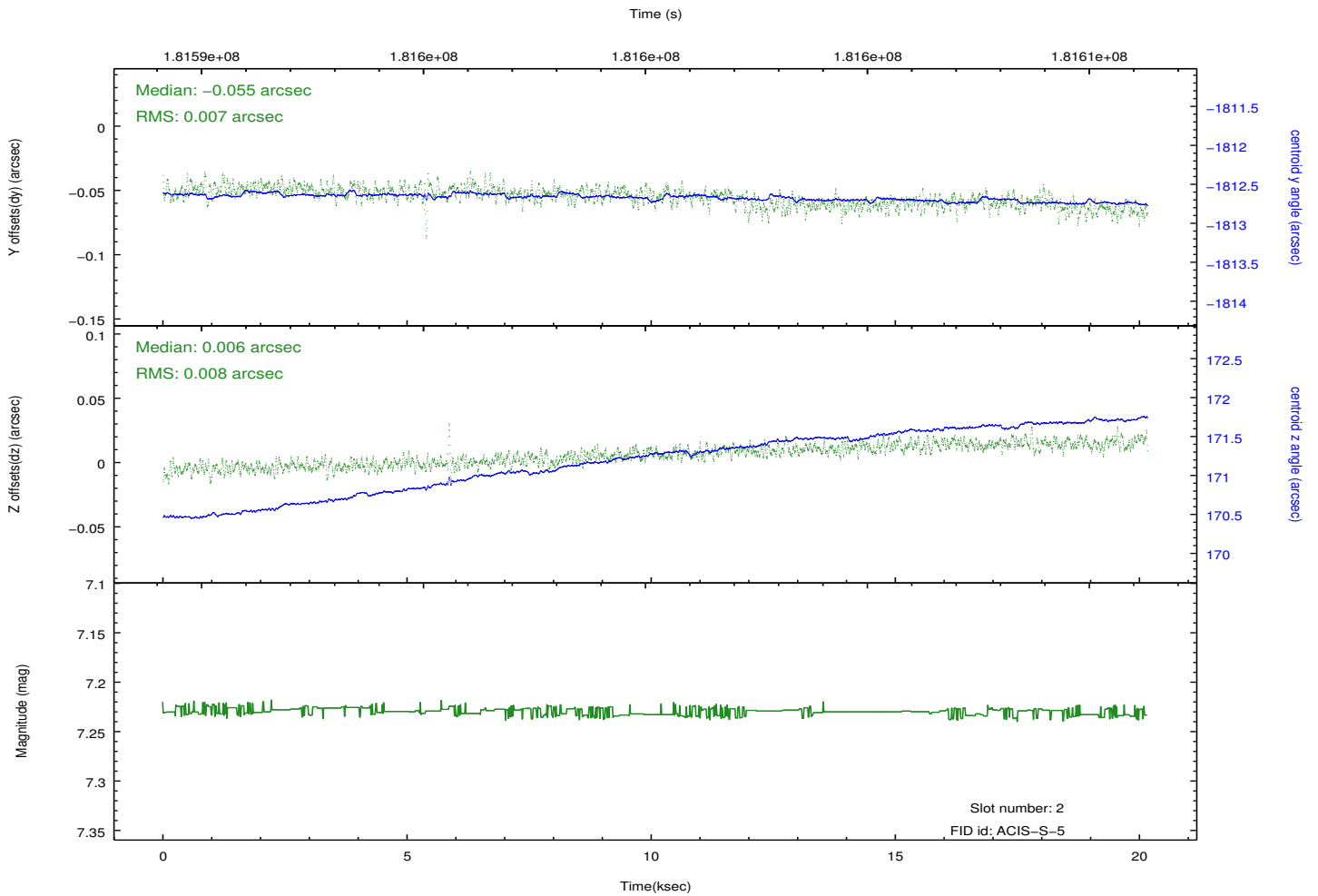
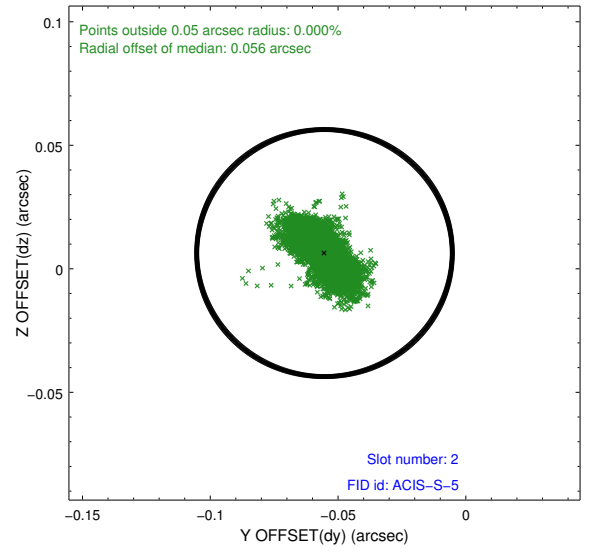
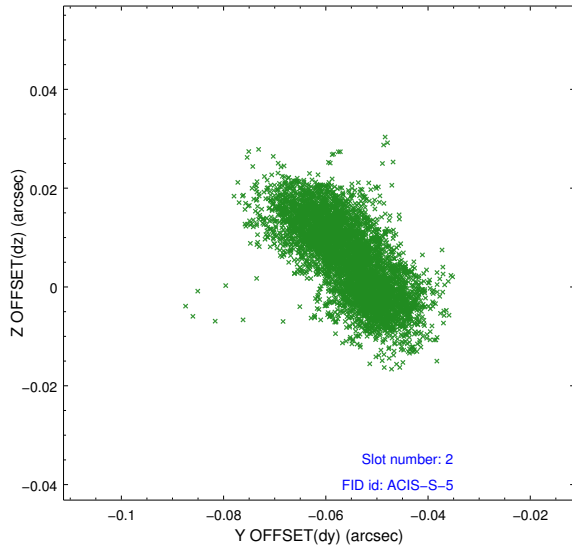
2.5.1 Slot 0



2.5.2 Slot 1



2.5.3 Slot 2



A Summary

A.1 Status

V&V Scientist	Jen Lauer
V&V Date (YYYY-MM-DD)	2012.11.30
V&V Edition	1
V&V Disposition and Status	OK
V&V Charge Time	20.147

A.2 Comments

Roll preference not met.