

# V&V Reference Report

## L2 ASCDS Version : 8.4.5

Observation 4979 - L2 Version 3  
Chandra X-Ray Center

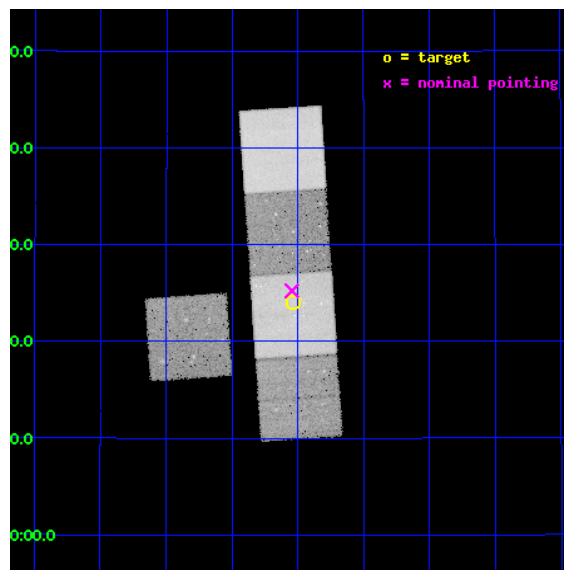
L2 Processing Date : Nov 10 2012

## Contents

<b>1</b>	<b>Front</b>	<b>2</b>
<b>2</b>	<b>OBI</b>	<b>3</b>
2.1	OBI . . . . .	3
2.1.1	Images . . . . .	3
2.1.2	Bias . . . . .	3
2.1.3	Parameters . . . . .	4
2.1.4	Events . . . . .	4
2.2	Compared Parameters . . . . .	5
2.3	Aspect . . . . .	6
2.4	Star Slots . . . . .	9
2.4.1	Slot 3 . . . . .	9
2.4.2	Slot 4 . . . . .	10
2.4.3	Slot 5 . . . . .	11
2.4.4	Slot 6 . . . . .	12
2.4.5	Slot 7 . . . . .	13
2.5	FID Slots . . . . .	14
2.5.1	Slot 0 . . . . .	14
2.5.2	Slot 1 . . . . .	15
2.5.3	Slot 2 . . . . .	16
<b>A</b>	<b>Summary</b>	<b>17</b>
A.1	Status . . . . .	17
A.2	Comments . . . . .	17

# 1 Front

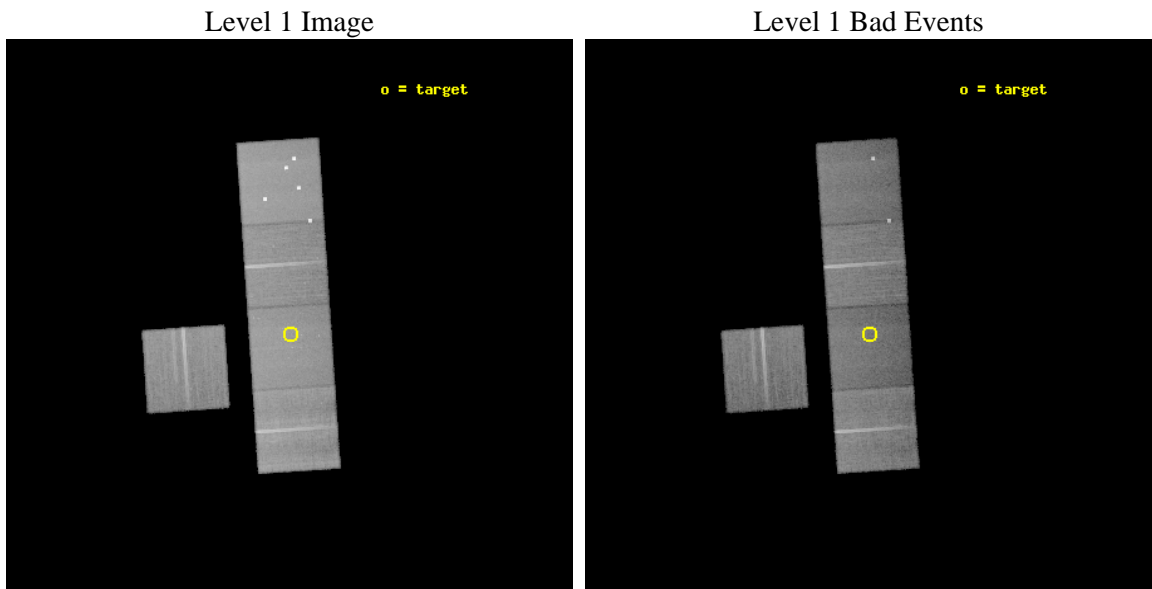
seq_num	800424	Sequence number
obs_id	4979	Observation id
title	What bends the lobes of WAT radio sources in isolated environments -- are they in fossil groups?	Proposal title
observer	Prof. Elizabeth Blanton	Principal investigator
object	0853+2324	Source name
dtycle	0	&#160
cycle	P	events from which exps? Prim/Second/Both
ra_targ	133.382917	Observer's specified target RA [deg]
dec_targ	23.4	Observer's specified target Dec [deg]
ra_nom	133.38629659624	Nominal RA [deg]
dec_nom	23.420527625892	Nominal Dec [deg]
roll_nom	86.144179793573	Nominal Roll [deg]
revision	3	Processing version of data
ontime	47185.099909246	Sum of GTIs [s]
livetime	46568.591841766	Livetime [s]
ontime3	47175.676948637	Sum of GTIs [s]
ontime5	47185.099909246	Sum of GTIs [s]
ontime6	47181.958918989	Sum of GTIs [s]
ontime7	47185.099909246	Sum of GTIs [s]
ontime8	47178.817938775	Sum of GTIs [s]
l2events	340751	Number of level 2 events



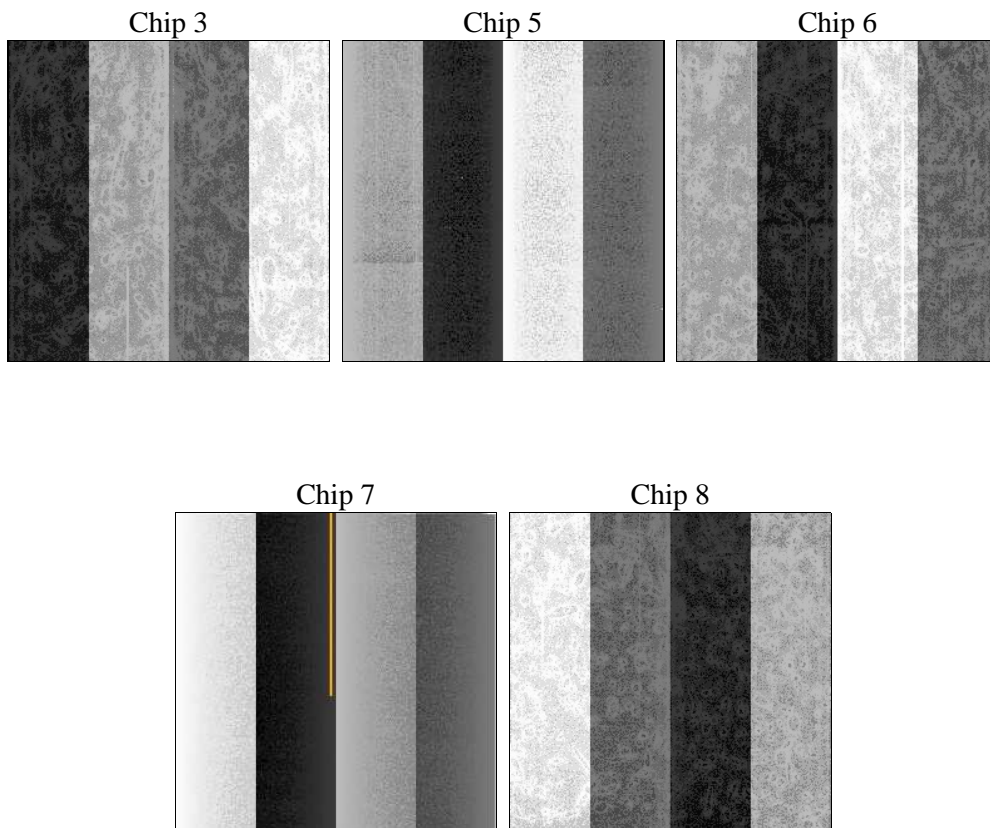
## 2 OBI

### 2.1 OBI

#### 2.1.1 Images



#### 2.1.2 Bias



### 2.1.3 Parameters

obi_num	0	Obi number	sched_exp_time	47000.000000	[s] Scheduled observation exposure time
ascdsver	8.4.5	Processing system revision	ontime	47185.099909246	Sum of GTIs [s]
caldbver	4.5.2	&#160	ontime3	47175.676948637	Sum of GTIs [s]
date	2012-11-10T04:44:12	Date and time of file creation	ontime5	47185.099909246	Sum of GTIs [s]
revision	3	Processing version of data	ontime6	47181.958918989	Sum of GTIs [s]
			ontime7	47185.099909246	Sum of GTIs [s]
			ontime8	47178.817938775	Sum of GTIs [s]
			l1events	1442196	Number of level 1 events

### 2.1.4 Events

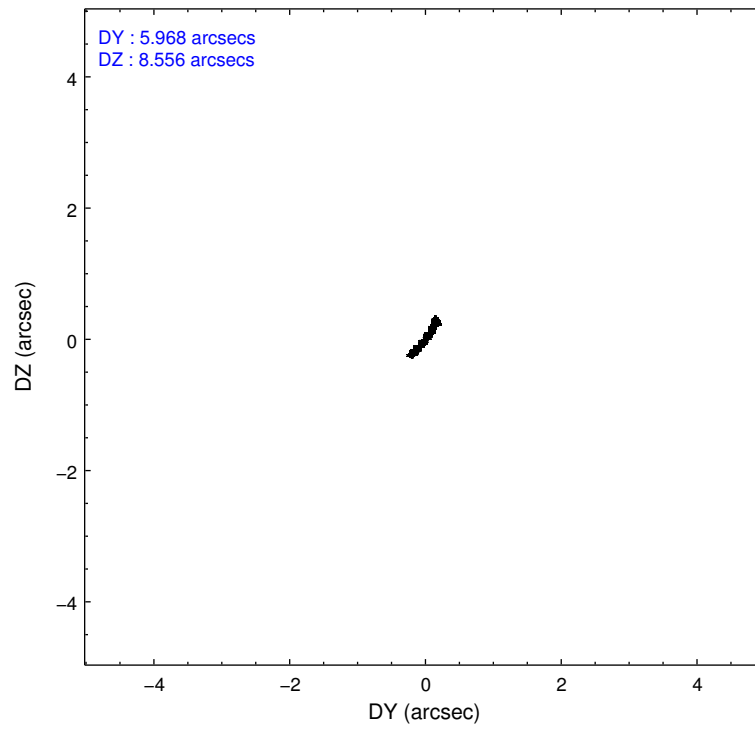
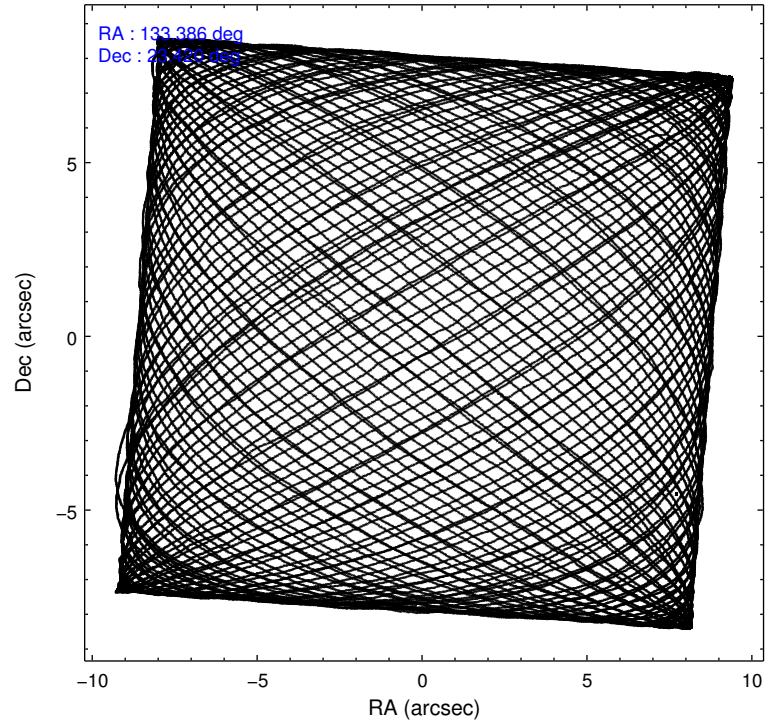
	ccd 3	ccd 5	ccd 6	ccd 7	ccd 8
level 1 events	234307	377990	252133	272275	305491
rejected events	211064	173496	225789	148636	236142
rejected %	90%	45%	89%	54%	77%

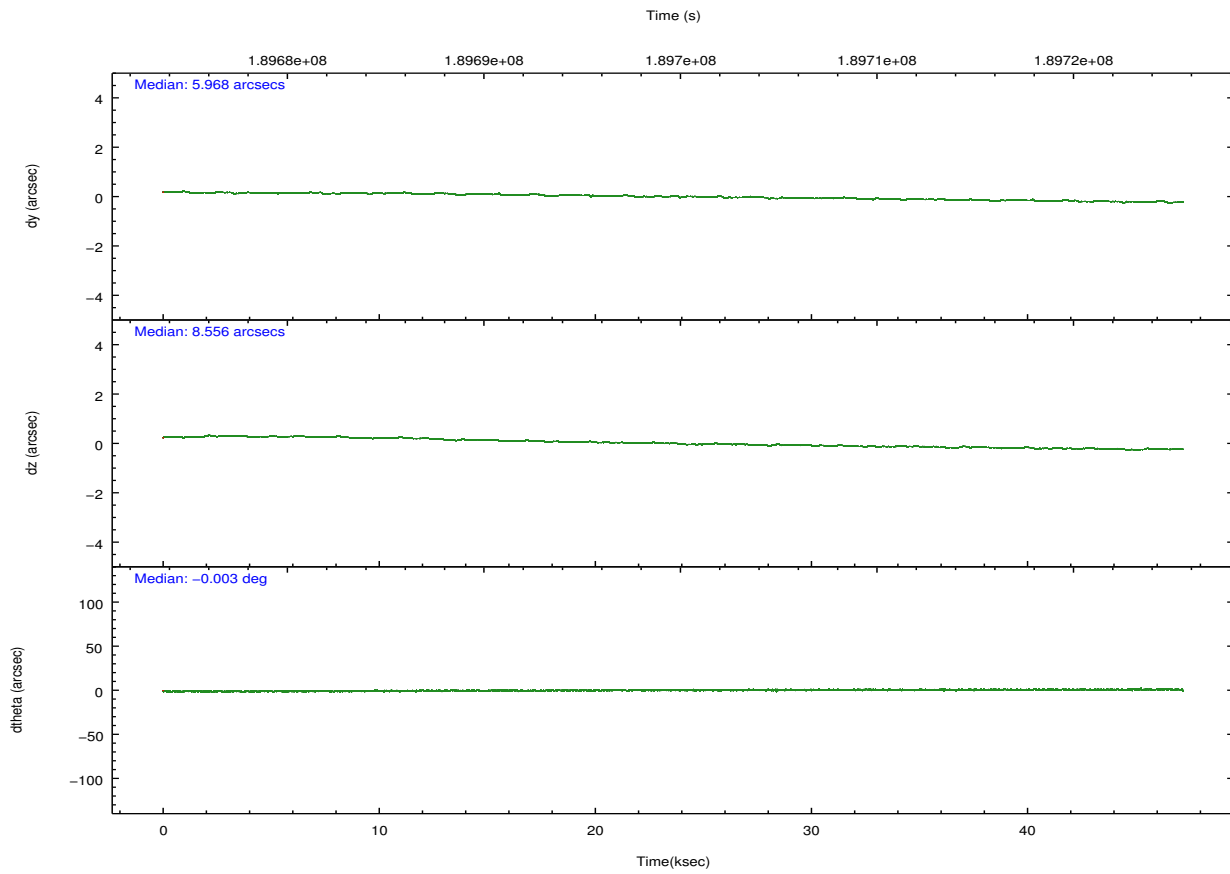
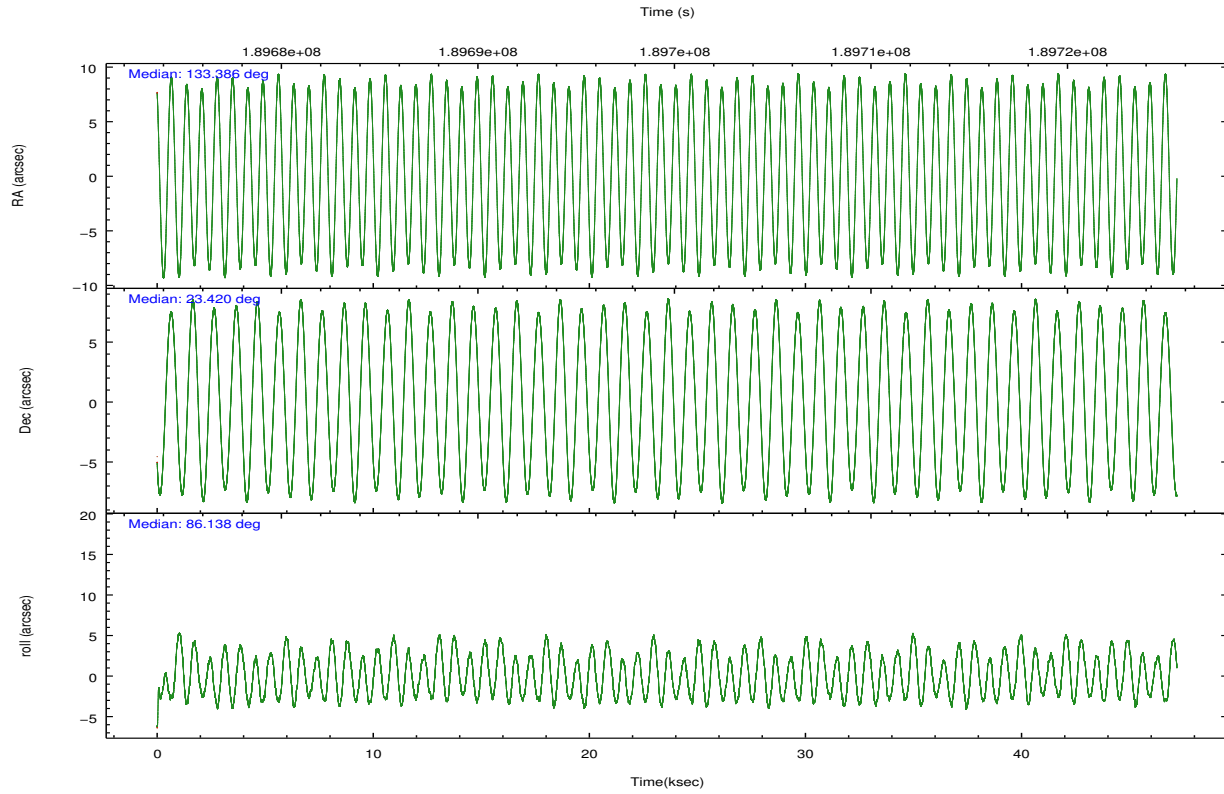
	ccd 3	ccd 5	ccd 6	ccd 7	ccd 8
grade 0 events	8440	51134	9607	11325	20913
	3%	13%	3%	4%	6%
grade 1 events	115	4825	126	204	214
	0%	1%	0%	0%	0%
grade 2 events	4767	51593	5427	24925	15392
	2%	13%	2%	9%	5%
grade 3 events	2798	8351	2930	11860	7616
	1%	2%	1%	4%	2%
grade 4 events	2629	8004	2912	11808	7178
	1%	2%	1%	4%	2%
grade 5 events	9299	28013	9937	28487	13849
	3%	7%	3%	10%	4%
grade 6 events	4619	85516	5483	63787	18284
	1%	22%	2%	23%	5%
grade 7 events	201640	140554	215711	119879	222045
	86%	37%	85%	44%	72%

## 2.2 Compared Parameters

Parameter	Planned	Actual	Parameter	Planned	Actual
Instrument	ACIS	ACIS	Obspar format version number	7	7
Detector	ACIS-35678	ACIS-35678	Obspar file type	PREDICTED	ACTUAL
Grating	NONE	NONE	Obspar update status	NONE	UPDATED
Data mode	VFAINT	VFAINT	Number of optional ACIS chips dropped	0	0
Observation mode	POINTING	POINTING	On-chip summing requested	N	N
[deg] Pointing RA	133.399740	133.3862965962356	Subarray requested	NONE	NONE
[deg] Pointing Dec	23.396243	23.42052762589152	Alternating exposures requested	N	N
[deg] Pointing Roll	85.982206	86.14417979357322	[s] Primary exposure time	0.000000	3.1
[mm] SIM focus pos	-0.684267	-0.6828225247311905			
[mm] SIM defocus	0	0.001444936568705701			
[mm] SIM translation stage pos	-190.132523	-190.1400660498719			
[mm] SIM translation stage offset	0	0.00754346686406393			
[s] Observation start time (MET)	189676223.184000	189675210.63917			
Observation start date	2004-01-05T07:49:19	2004-01-05T07:33:30			
[s] Observation end time (MET)	189723223.184000	189723770.52878			
Observation end date	2004-01-05T20:52:39	2004-01-05T21:02:50			
Read mode	TIMED	TIMED			

## 2.3 Aspect



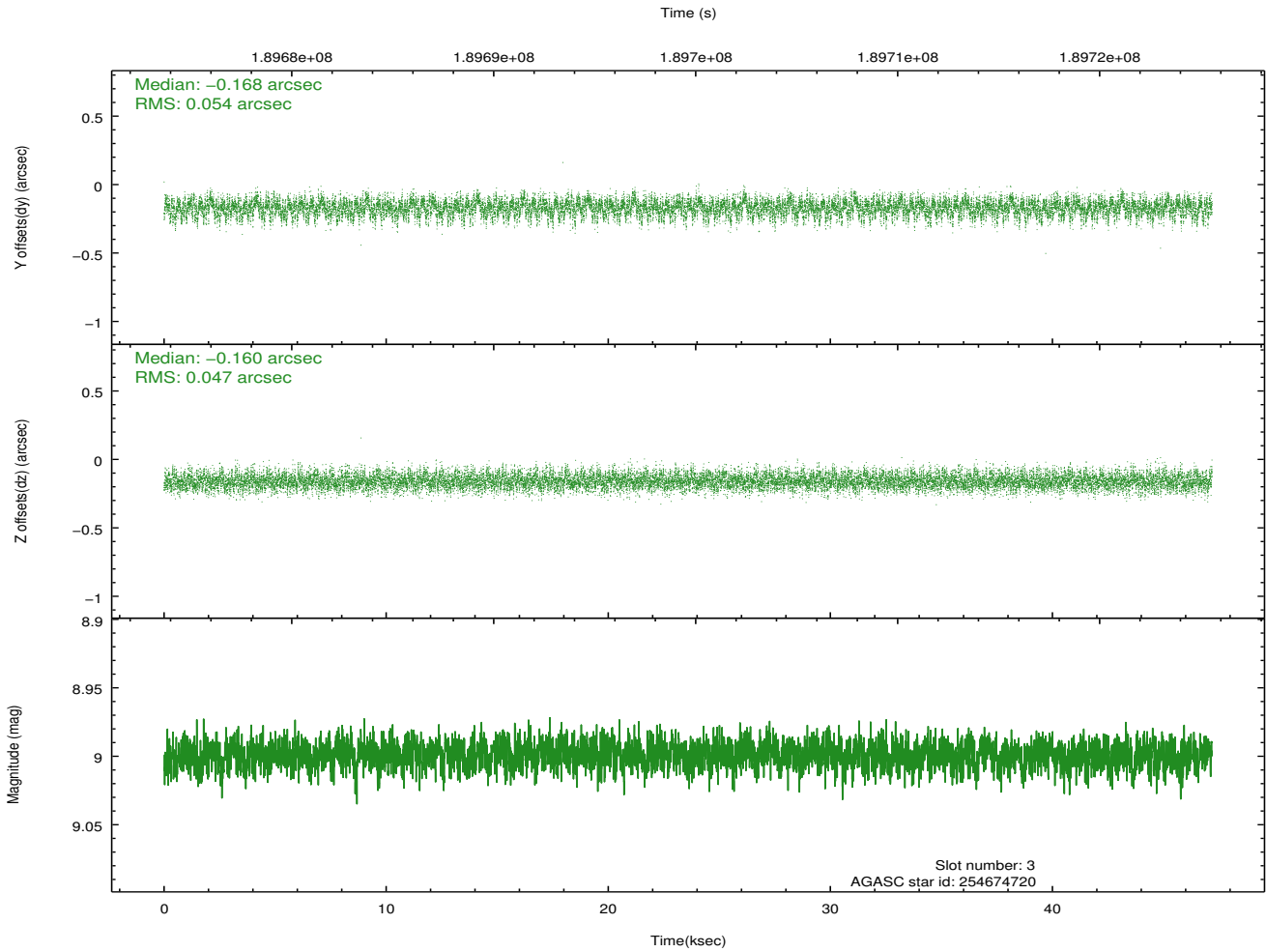
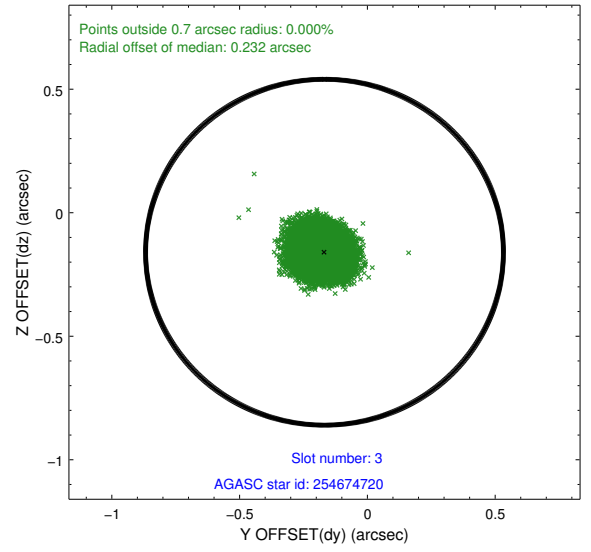
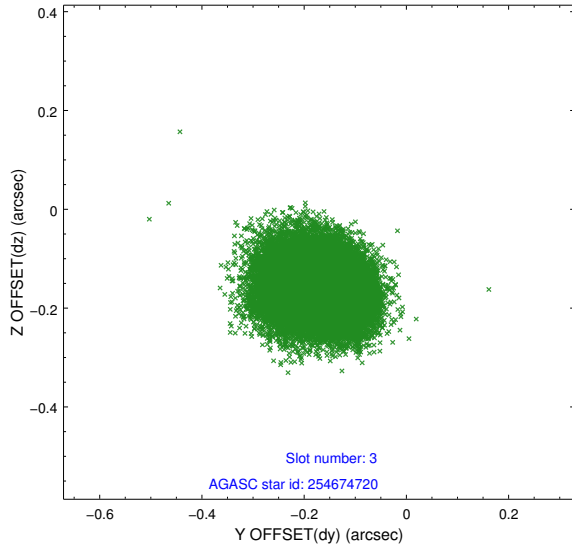


### Slot Statistics

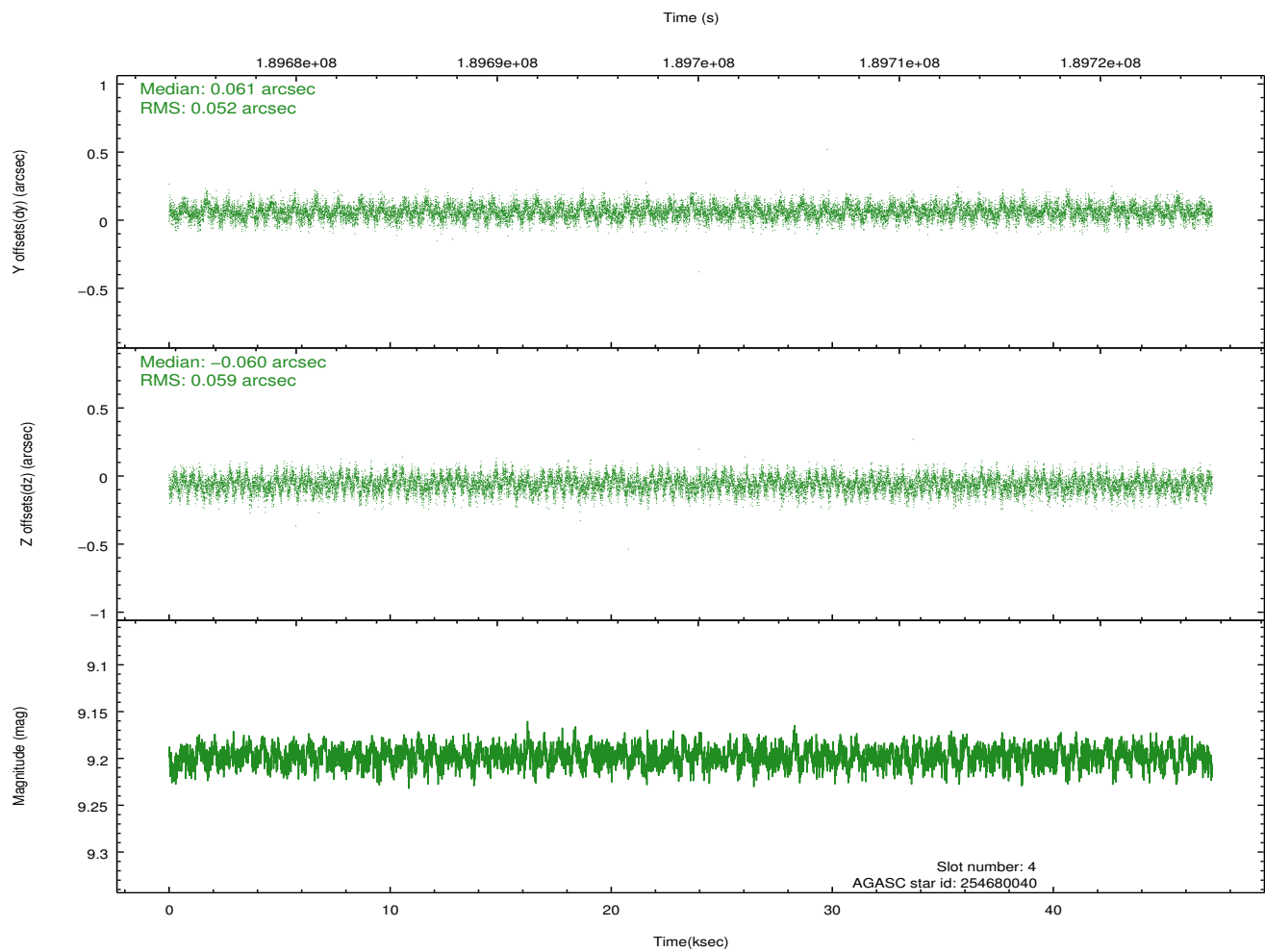
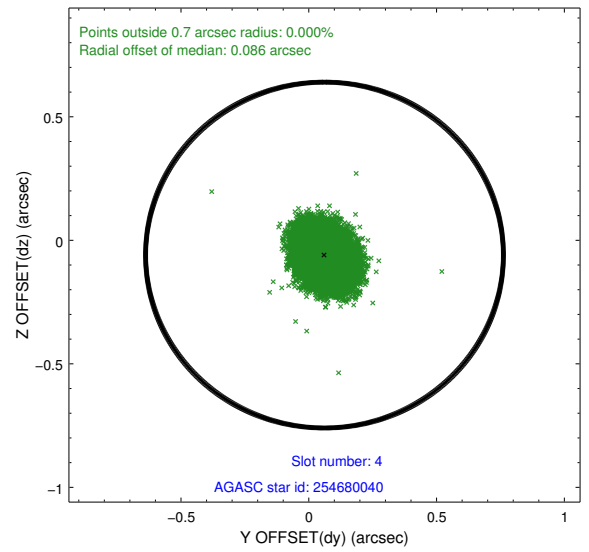
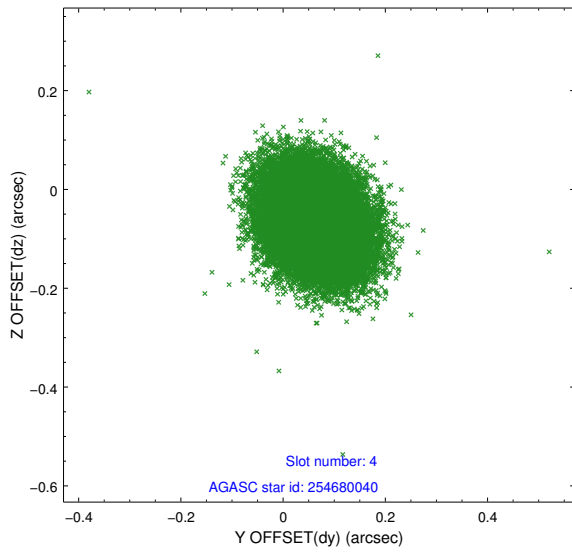
slot	status	id	mag	n_pts	med_dy	med_dz	dr1	dr2	ra	dec	mean_y	mean_z
0	FID	ACIS-S-2	7.10	11510	-0.037	-0.043	0.008	0.013	0.000000	0.000000	-758.74	-1729.82
1	FID	ACIS-S-4	7.21	11509	0.073	0.030	0.007	0.014	0.000000	0.000000	2154.67	178.72
2	FID	ACIS-S-5	7.23	11508	-0.067	0.022	0.007	0.011	0.000000	0.000000	-1811.61	172.41
3	GUIDE	254674720	9.00	23005	-0.168	-0.160	0.077	0.123	132.962130	23.456817	118.33	1457.12
4	GUIDE	254680040	9.20	23012	0.061	-0.060	0.083	0.134	133.246944	23.295666	-396.07	478.70
5	GUIDE	254685840	9.13	23013	0.172	0.079	0.070	0.114	133.477735	22.755045	-2284.05	-420.04
6	GUIDE	255590664	9.13	23012	-0.037	0.110	0.087	0.141	134.050327	23.243846	-391.37	-2184.69
7	GUIDE	255594224	9.23	23011	-0.029	0.028	0.092	0.153	134.104634	23.947946	2149.81	-2173.66

## 2.4 Star Slots

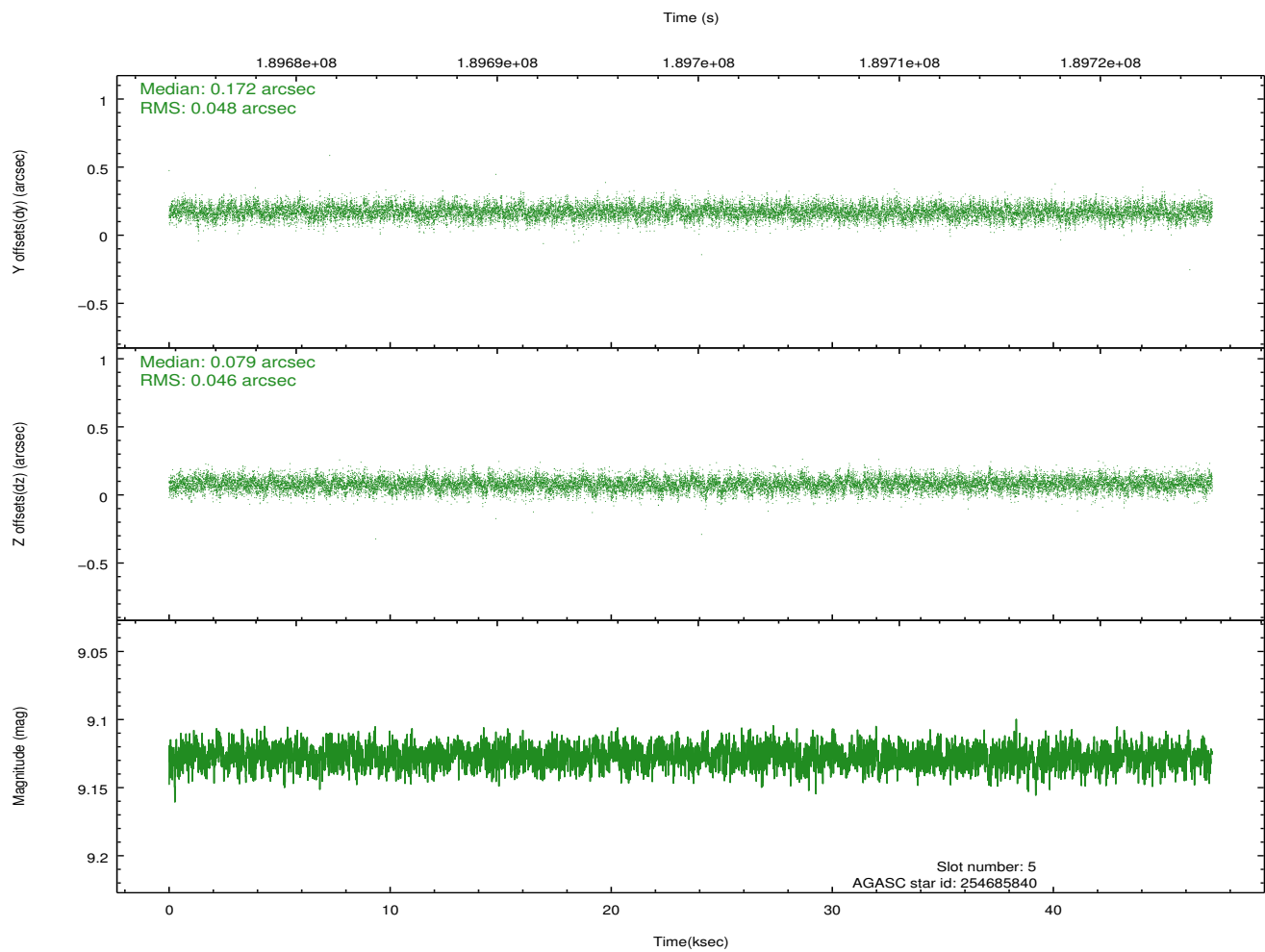
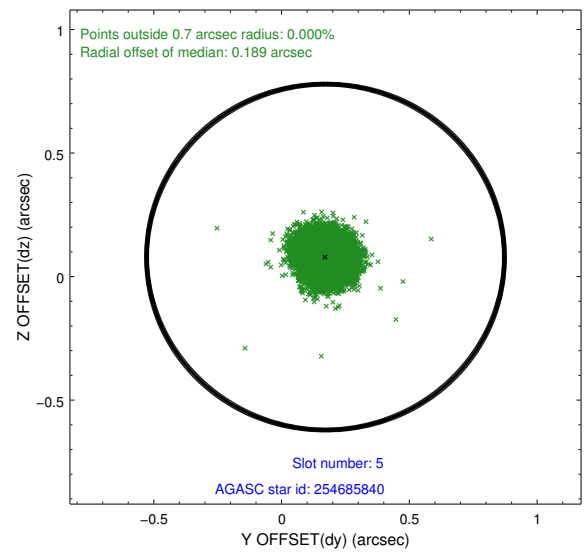
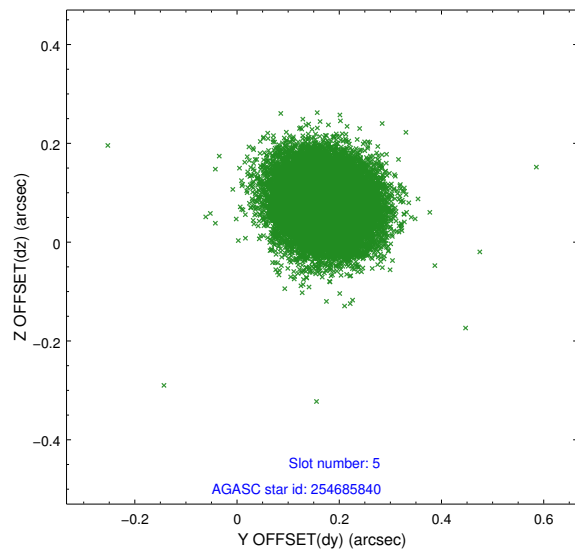
### 2.4.1 Slot 3



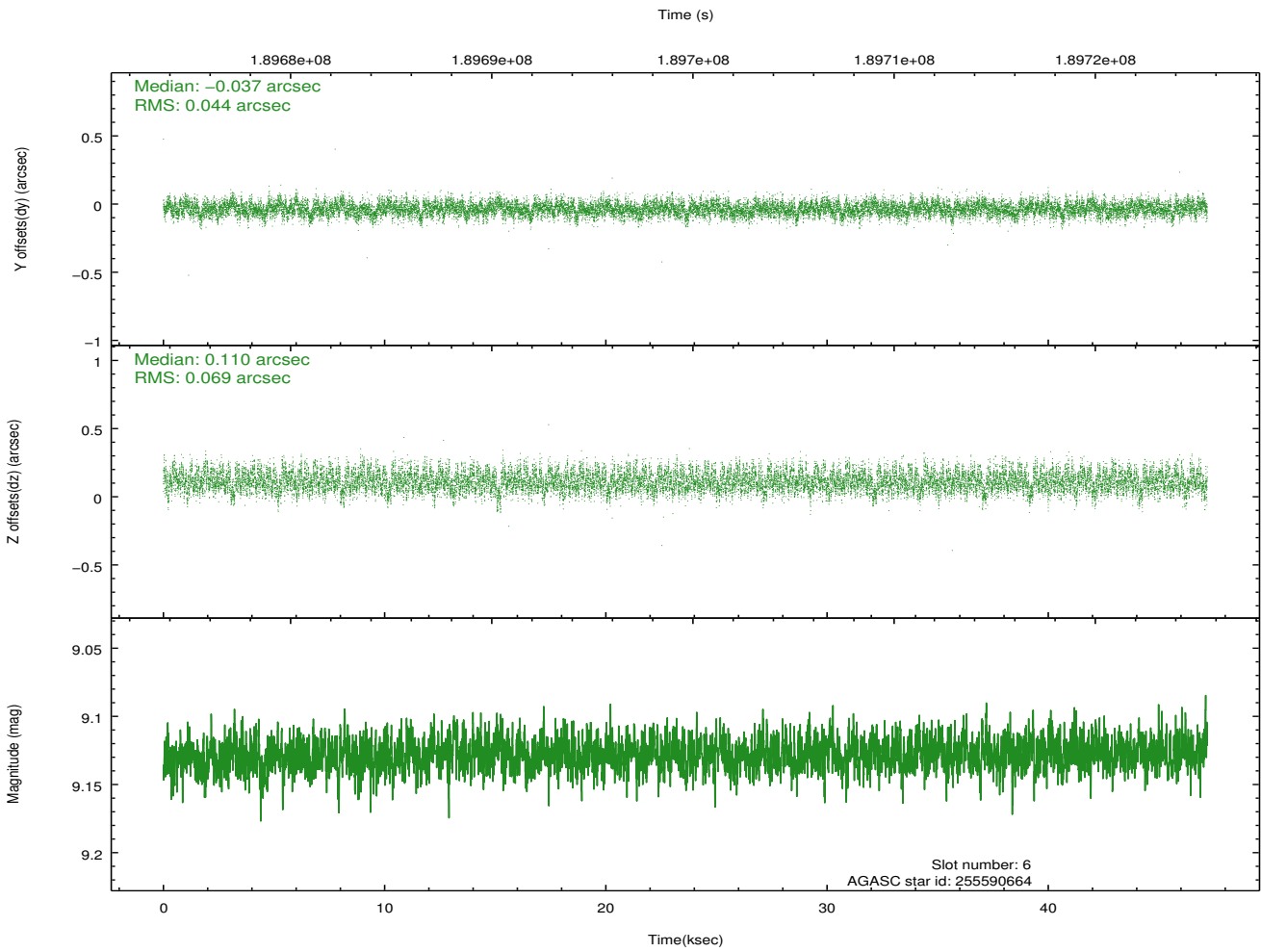
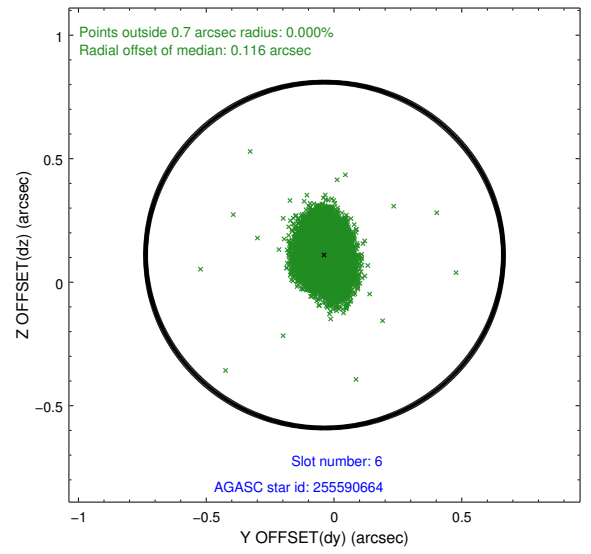
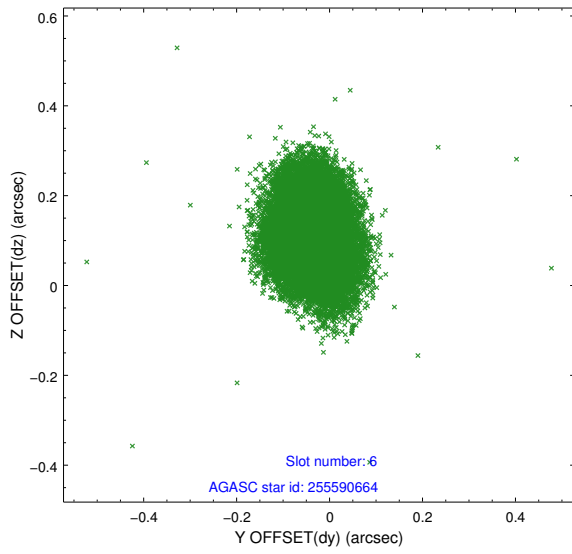
## 2.4.2 Slot 4



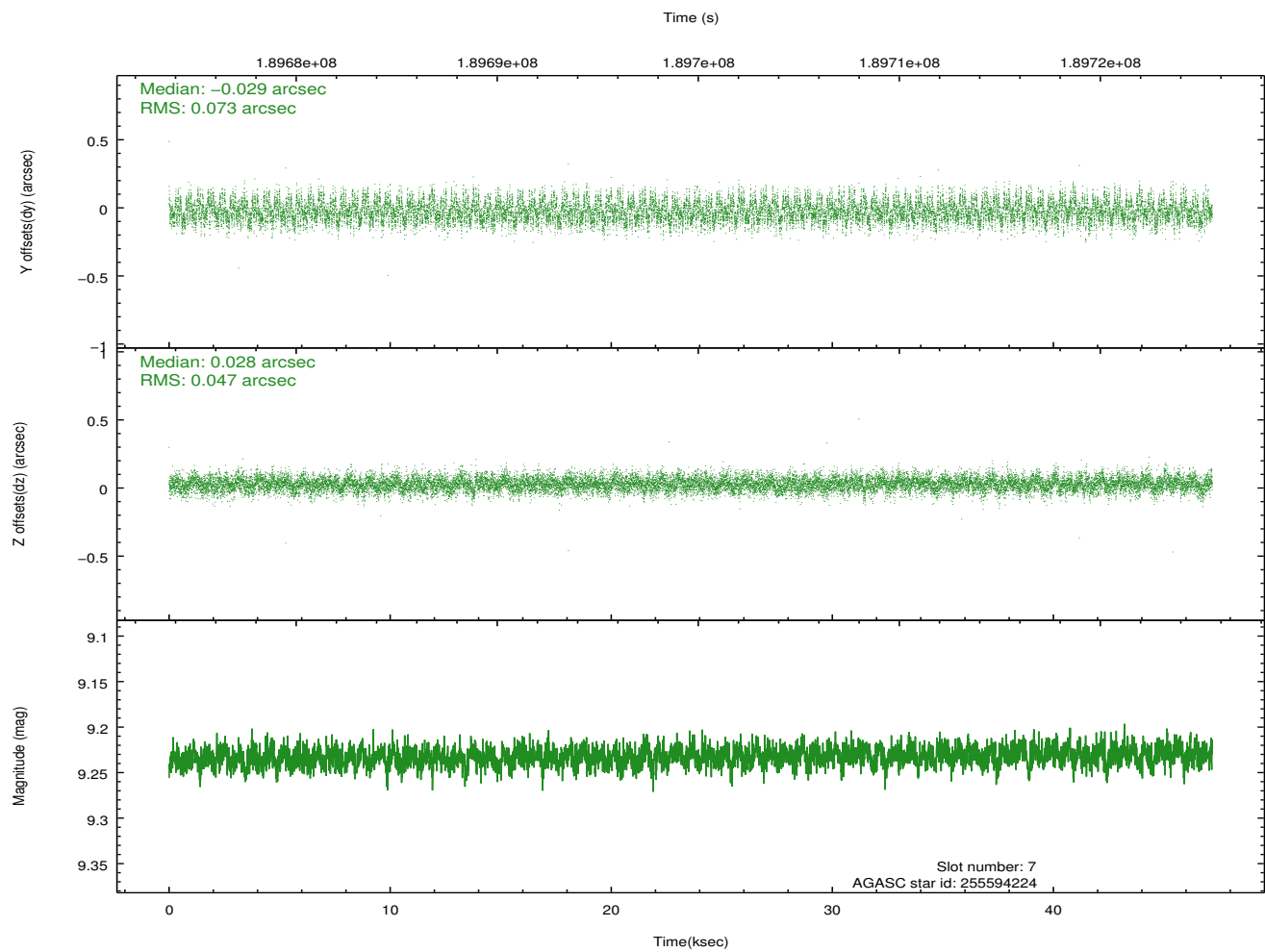
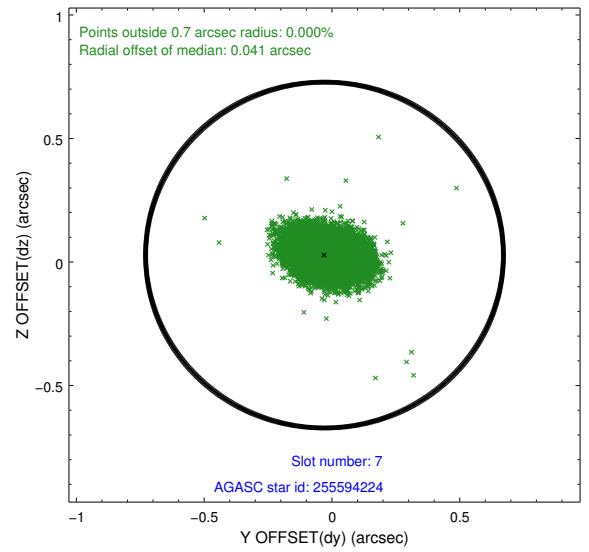
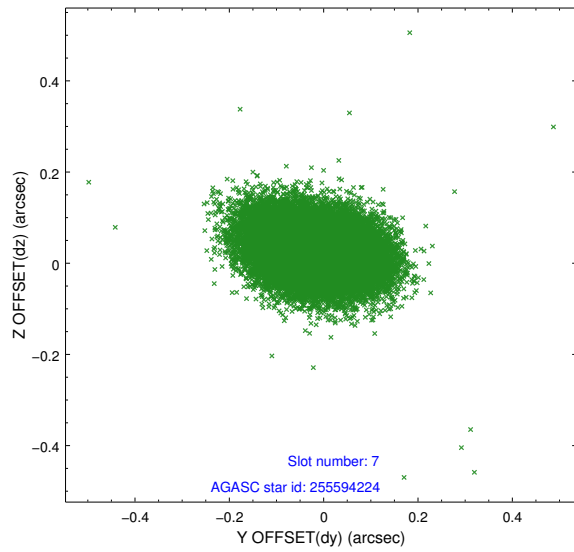
### 2.4.3 Slot 5



### 2.4.4 Slot 6

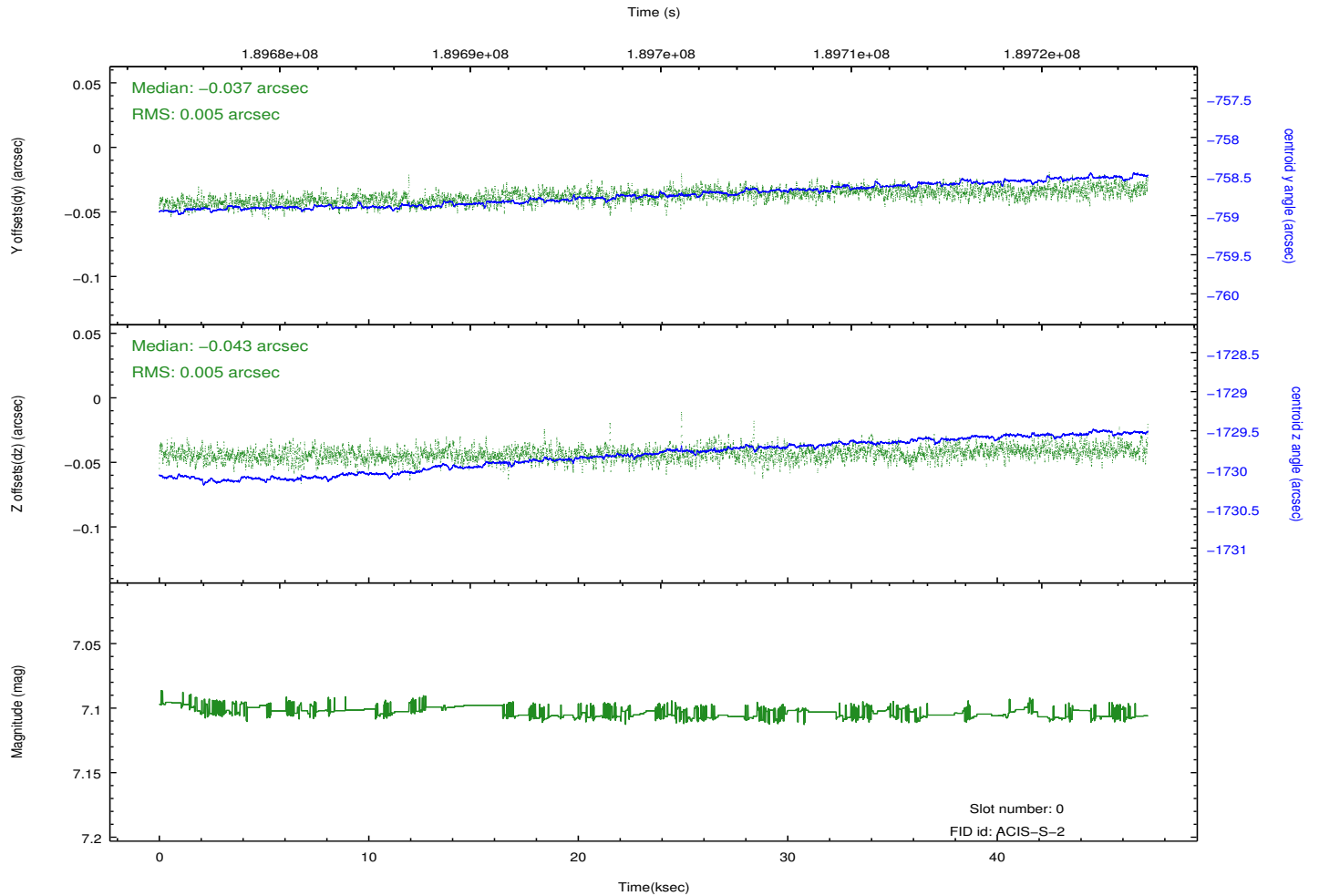
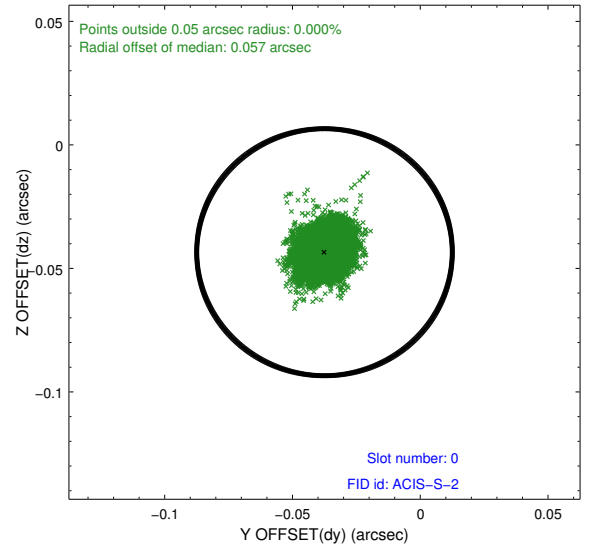
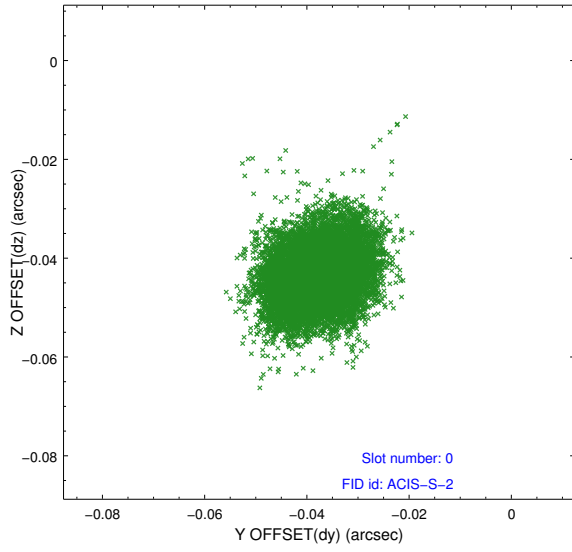


## 2.4.5 Slot 7

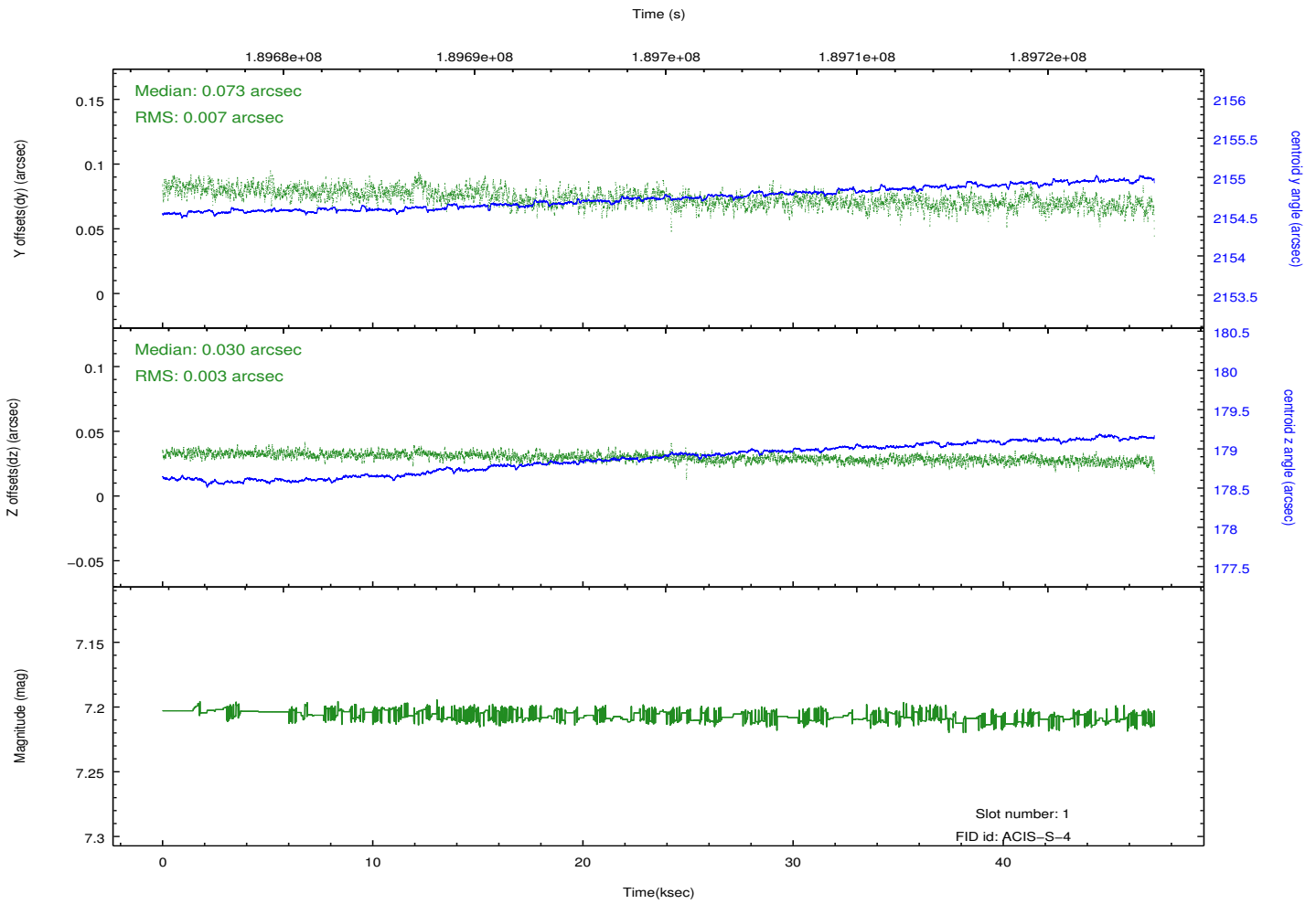
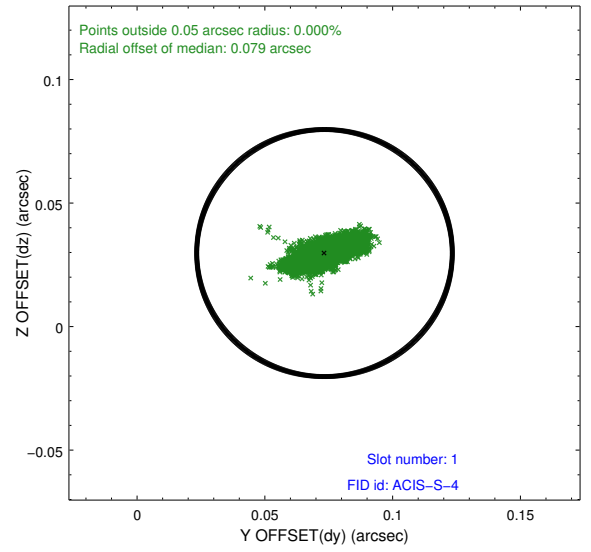
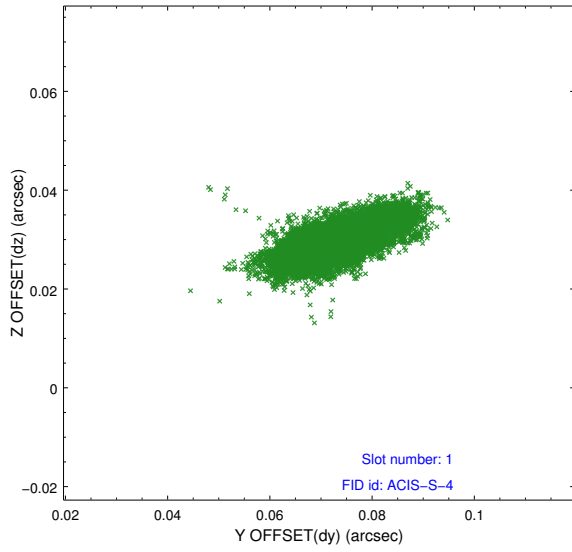


## 2.5 FID Slots

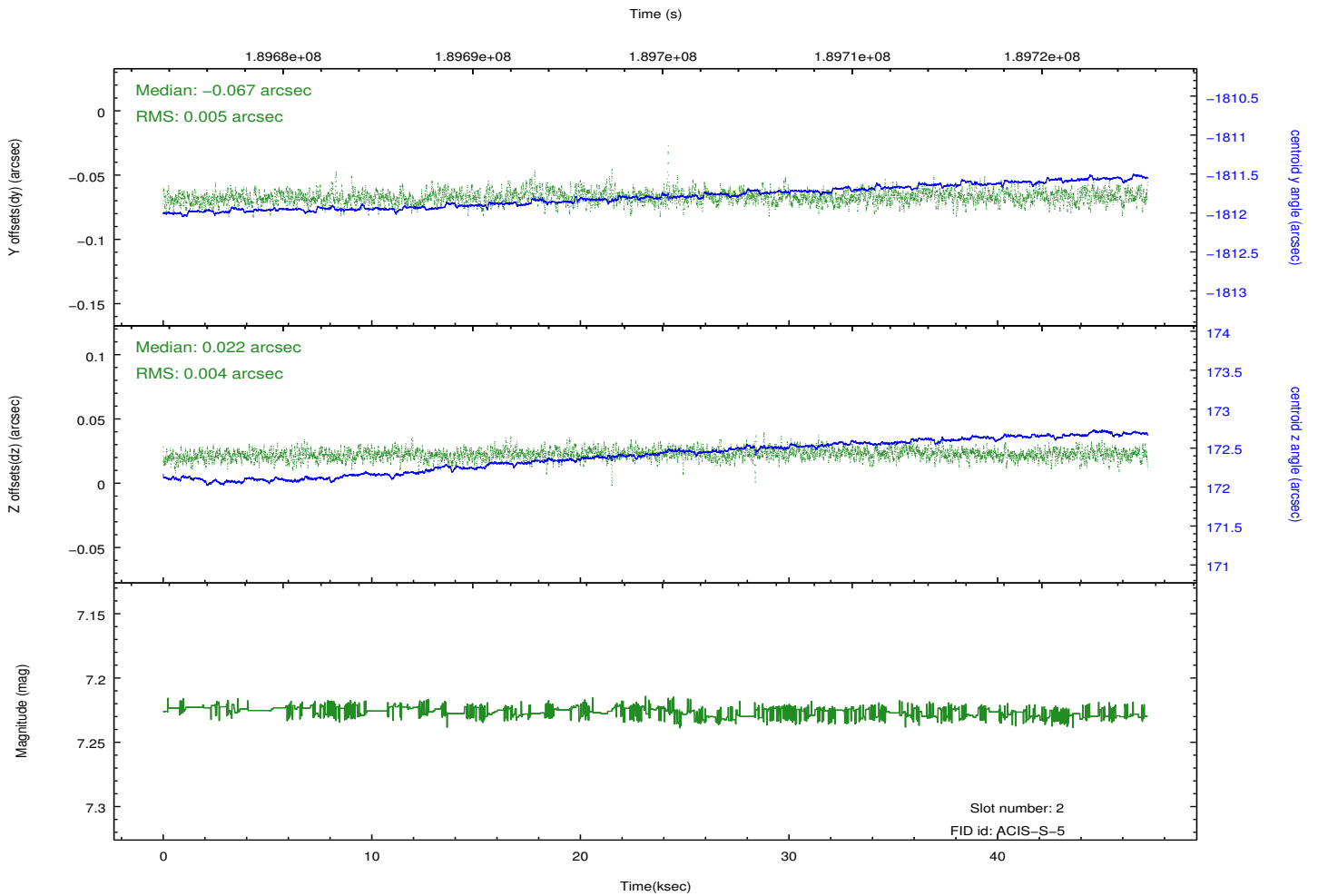
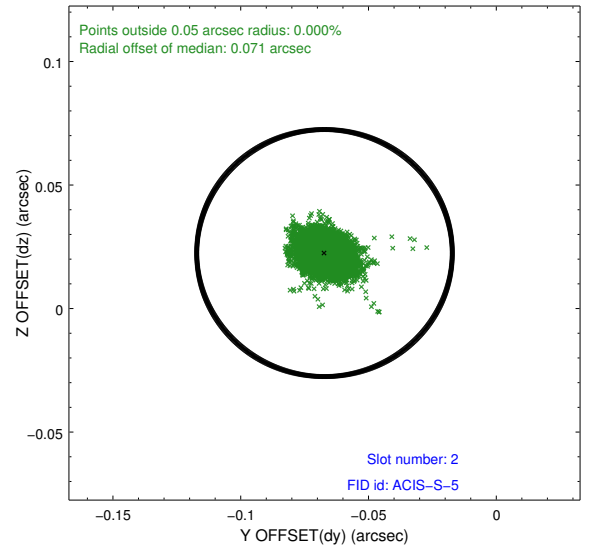
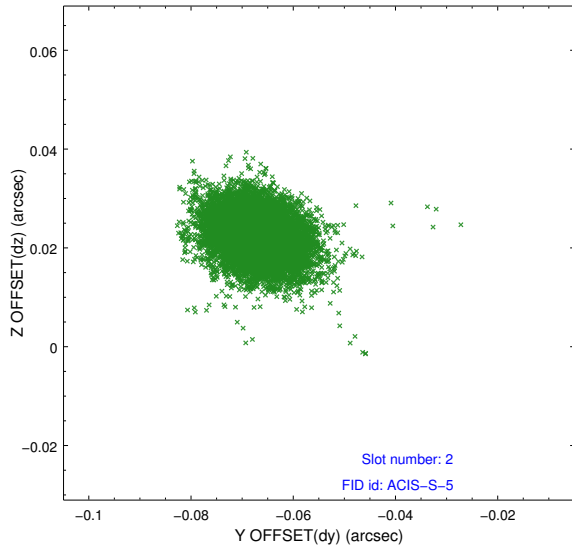
### 2.5.1 Slot 0



## 2.5.2 Slot 1



### 2.5.3 Slot 2



# A Summary

## A.1 Status

V&V Scientist	Jen Lauer
V&V Date (YYYY-MM-DD)	2012.12.04
V&V Edition	1
V&V Disposition and Status	OK
V&V Charge Time	47.185

## A.2 Comments