

V&V Reference Report

L2 ASCDS Version : 8.5

Observation 5019 - L2 Version 3
Chandra X-Ray Center

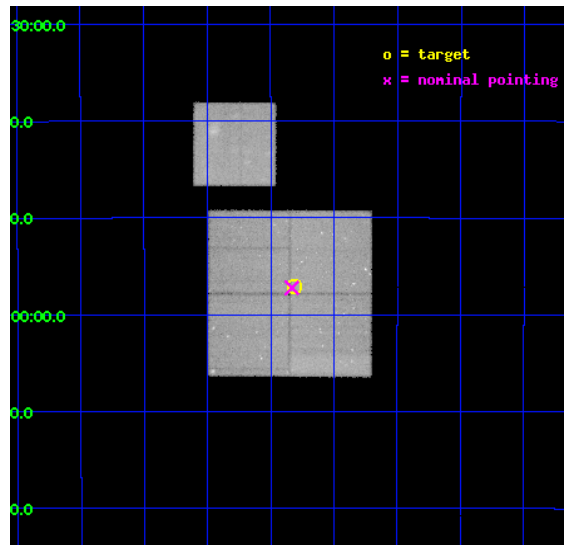
L2 Processing Date : Mar 15 2013

Contents

1	Front	2
2	OBI	3
2.1	OBI	3
2.1.1	Images	3
2.1.2	Bias	3
2.1.3	Parameters	4
2.1.4	Events	4
2.2	Compared Parameters	5
2.3	Aspect	6
2.4	Star Slots	9
2.4.1	Slot 3	9
2.4.2	Slot 4	10
2.4.3	Slot 5	11
2.4.4	Slot 6	12
2.4.5	Slot 7	13
2.5	FID Slots	14
2.5.1	Slot 0	14
2.5.2	Slot 1	15
2.5.3	Slot 2	16
A	Summary	17
A.1	Status	17
A.2	Comments	17

1 Front

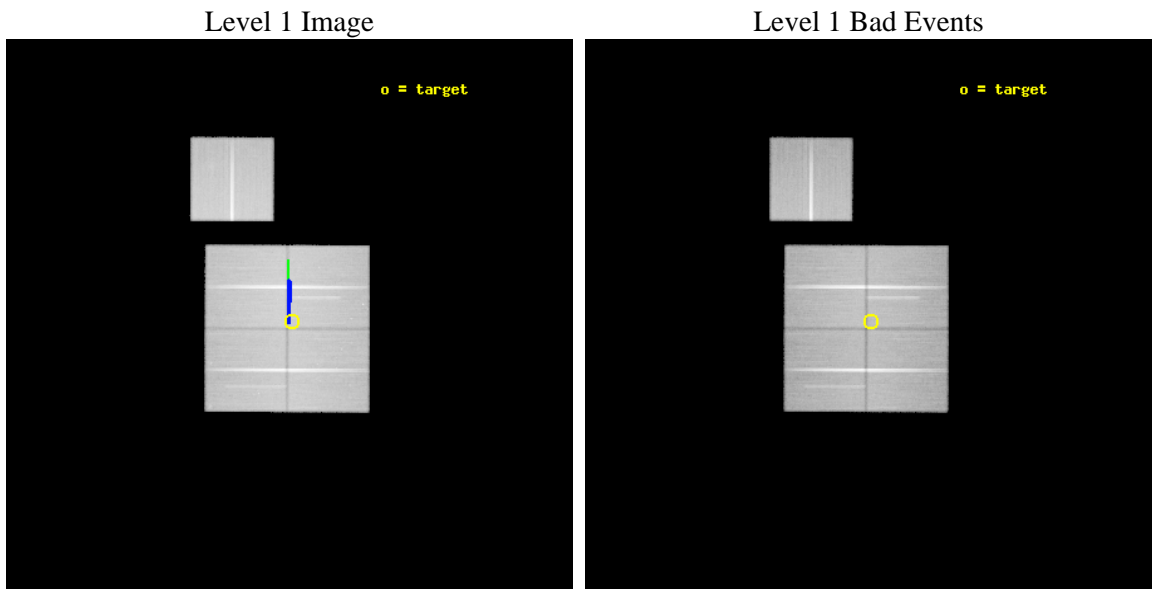
seq_num	900328	Sequence number
obs_id	5019	Observation id
title	The Extended Chandra Deep Field-South Survey: A Public Chandra Legacy	Proposal title
observer	Prof. William Brandt	Principal investigator
object	Extended CDF-S #3	Source name
dtcycle	0	
cycle	P	events from which exps? Prim/Second/Both
ra_targ	52.953271	Observer's specified target RA [deg]
dec_targ	-27.95225	Observer's specified target Dec [deg]
ra_nom	52.958124388113	Nominal RA [deg]
dec_nom	-27.954044822848	Nominal Dec [deg]
roll_nom	0.21095853985395	Nominal Roll [deg]
revision	3	Processing version of data
ontime	165288.81771165	Sum of GTIs [s]
livetime	163129.19762439	Livetime [s]
ontime0	165254.26677912	Sum of GTIs [s]
ontime1	165285.67667159	Sum of GTIs [s]
ontime2	165276.25373071	Sum of GTIs [s]
ontime3	165288.81771165	Sum of GTIs [s]
ontime6	165288.81773153	Sum of GTIs [s]
l2events	431588	Number of level 2 events



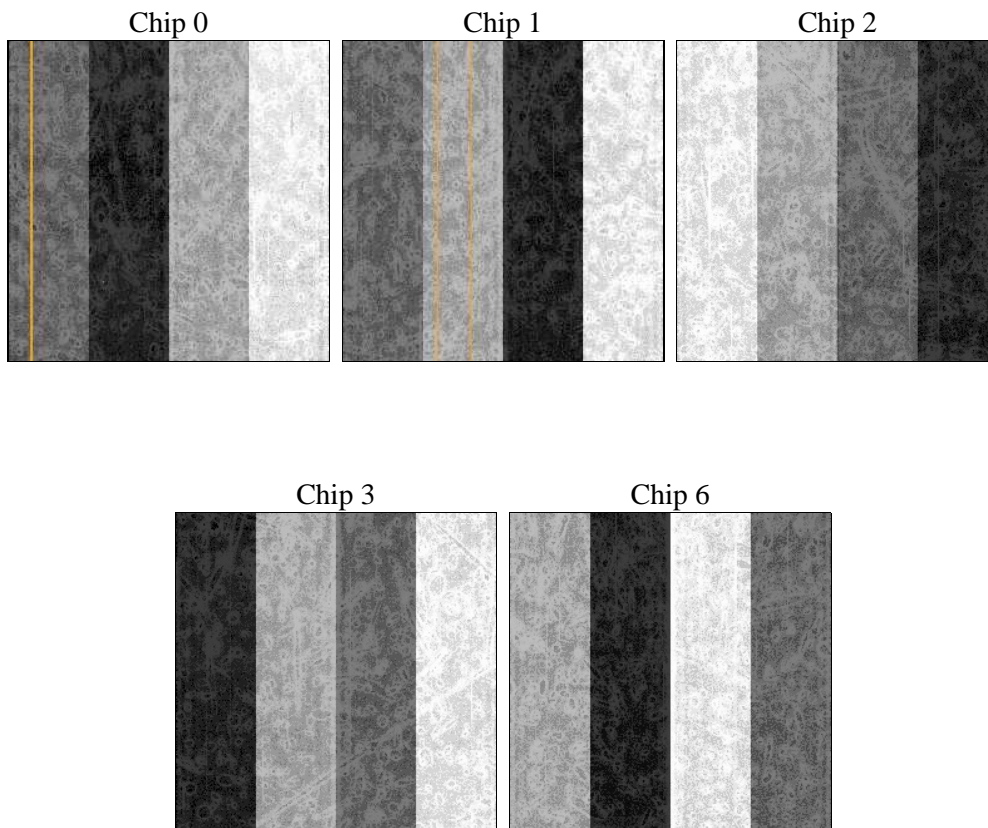
2 OBI

2.1 OBI

2.1.1 Images



2.1.2 Bias



2.1.3 Parameters

obi_num	2	Obi number	sched_exp_time	165246.104000	[s] Scheduled observation exposure time
ascdsver	8.5	Processing system revision	ontime	165288.81771165	Sum of GTIs [s]
caldbver	4.5.4	 	ontime0	165254.26677912	Sum of GTIs [s]
date	2012-12-12T11:11:46	Date and time of file creation	ontime1	165285.67667159	Sum of GTIs [s]
revision	3	Processing version of data	ontime2	165276.25373071	Sum of GTIs [s]
			ontime3	165288.81771165	Sum of GTIs [s]
			ontime6	165288.81773153	Sum of GTIs [s]
			l1events	5169236	Number of level 1 events

2.1.4 Events

	ccd 0	ccd 1	ccd 2	ccd 3	ccd 6
level 1 events	975958	982746	1100297	1056034	1054201
rejected events	873392	867358	1001298	958146	946582
rejected %	89%	88%	91%	90%	89%

	ccd 0	ccd 1	ccd 2	ccd 3	ccd 6
grade 0 events	34992	41051	34600	34686	37989
	3%	4%	3%	3%	3%
grade 1 events	530	444	542	538	461
	0%	0%	0%	0%	0%
grade 2 events	24158	25232	23528	21088	22828
	2%	2%	2%	1%	2%
grade 3 events	12182	13278	11012	11568	12284
	1%	1%	1%	1%	1%
grade 4 events	11216	12829	11349	11049	11996
	1%	1%	1%	1%	1%
grade 5 events	36349	39408	34391	41151	41199
	3%	4%	3%	3%	3%
grade 6 events	20023	23002	18513	19500	22523
	2%	2%	1%	1%	2%
grade 7 events	836508	827502	966362	916454	904921
	85%	84%	87%	86%	85%

2.2 Compared Parameters

Parameter	Planned	Actual	Parameter	Planned	Actual
Instrument	ACIS	ACIS	Obspar format version number	7	7
Detector	ACIS-01236	ACIS-01236	Obspar file type	PREDICTED	ACTUAL
Grating	NONE	NONE	Obspar update status	NONE	UPDATED
Data mode	VFAINT	VFAINT	Number of optional ACIS chips dropped	0	0
Observation mode	POINTING	POINTING	On-chip summing requested	N	N
[deg] Pointing RA	52.931381	52.95812438811318	Subarray requested	NONE	NONE
[deg] Pointing Dec	-27.967918	-27.95404482284754	Alternating exposures requested	N	N
[deg] Pointing Roll	359.989736	0.2109585398539461	[s] Primary exposure time	0.000000	3.1
[deg] Roll angle	0.000000	0.000000			
[deg] Roll tolerance	2.000000	2.000000			
Roll constraint allows 180D rotation	N	N			
[mm] SIM focus pos	-0.782348	-0.7809083437167272			
[mm] SIM defocus	0	0.001439871863259334			
[mm] SIM translation stage pos	-233.592463	-233.5874344608287			
[mm] SIM translation stage offset	0	-0.005018542100998502			
[s] Observation start time (MET)	217090856.184000	217089878.25199			
Observation start date	2004-11-17T14:59:52	2004-11-17T14:44:38			
[s] Observation end time (MET)	217256102.184000	217256329.03445			
Observation end date	2004-11-19T12:53:58	2004-11-19T12:58:49			
Read mode	TIMED	TIMED			

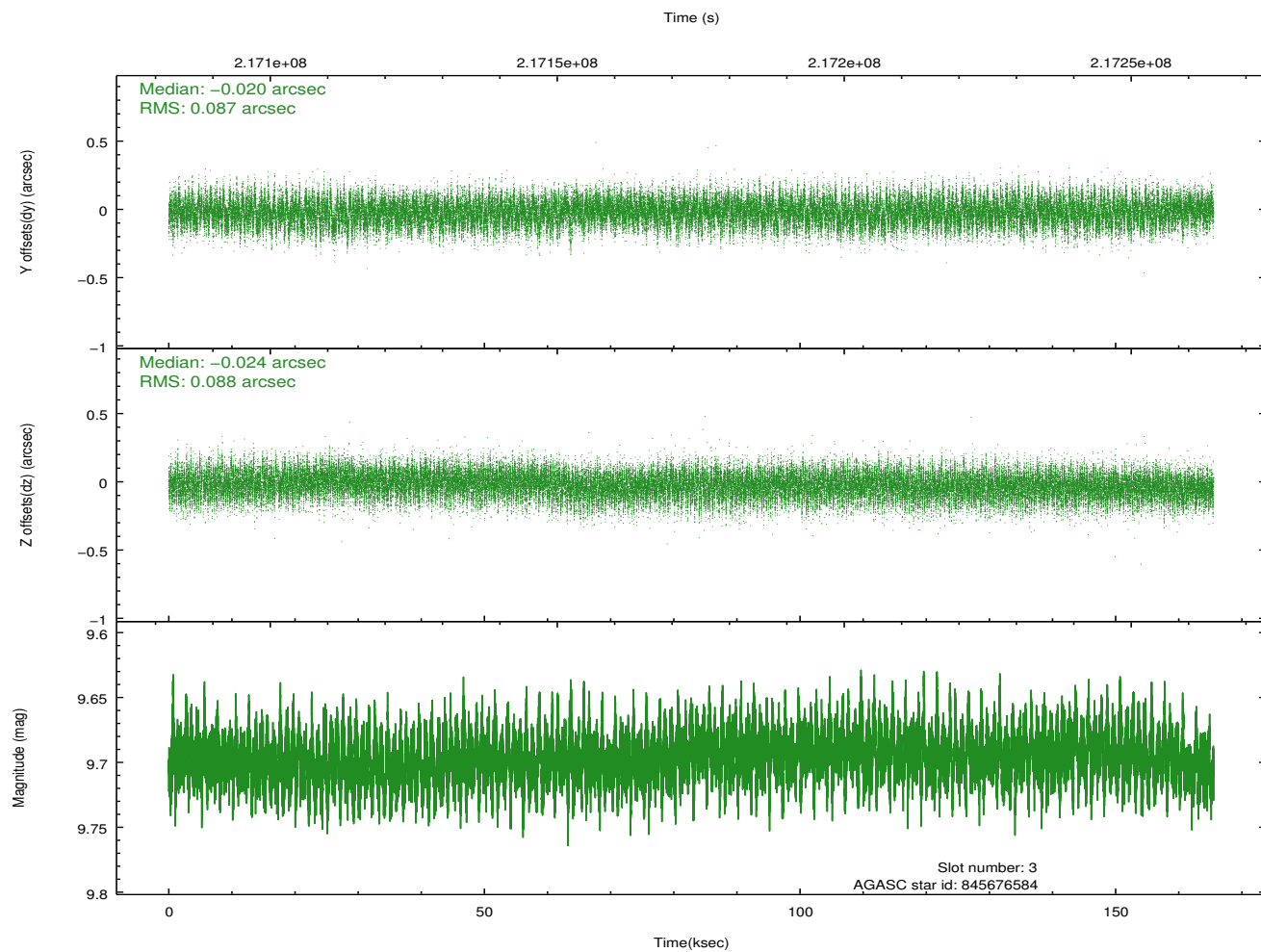
2.3 Aspect

Slot Statistics

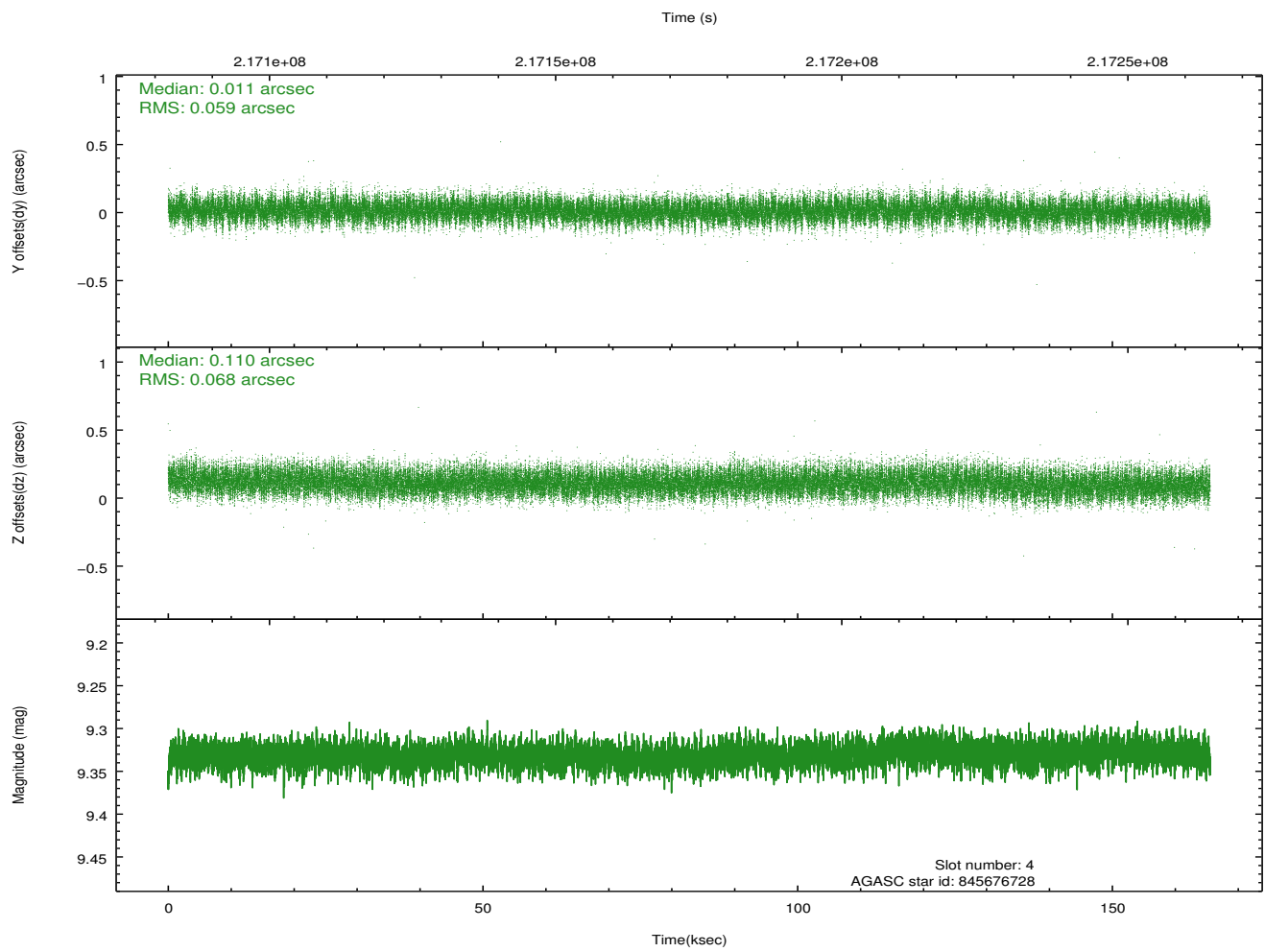
slot	status	id	mag	n_pts	med_dy	med_dz	dr1	dr2	ra	dec	mean_y	mean_z
0	FID	ACIS-I-1	7.24	40373	0.007	0.025	0.020	0.034	0.000000	0.000000	933.36	-832.73
1	FID	ACIS-I-5	7.23	40373	-0.165	0.027	0.018	0.037	0.000000	0.000000	-1815.00	1064.80
2	FID	ACIS-I-6	7.25	40372	0.064	0.011	0.018	0.027	0.000000	0.000000	399.07	1709.17
3	GUIDE	845676584	9.70	80541	-0.020	-0.024	0.132	0.212	52.264247	-27.542890	-2129.70	1524.04
4	GUIDE	845676728	9.33	80679	0.011	0.110	0.096	0.154	52.877179	-27.664318	-172.86	1093.24
5	GUIDE	845676936	9.49	80681	-0.002	-0.153	0.092	0.148	52.843773	-27.880153	-278.43	315.94
6	GUIDE	845682456	9.49	80678	0.038	0.021	0.094	0.153	52.409641	-28.494459	-1649.82	-1899.38
7	GUIDE	845683416	8.60	80704	-0.025	0.049	0.082	0.130	52.400573	-28.566798	-1677.63	-2159.85

2.4 Star Slots

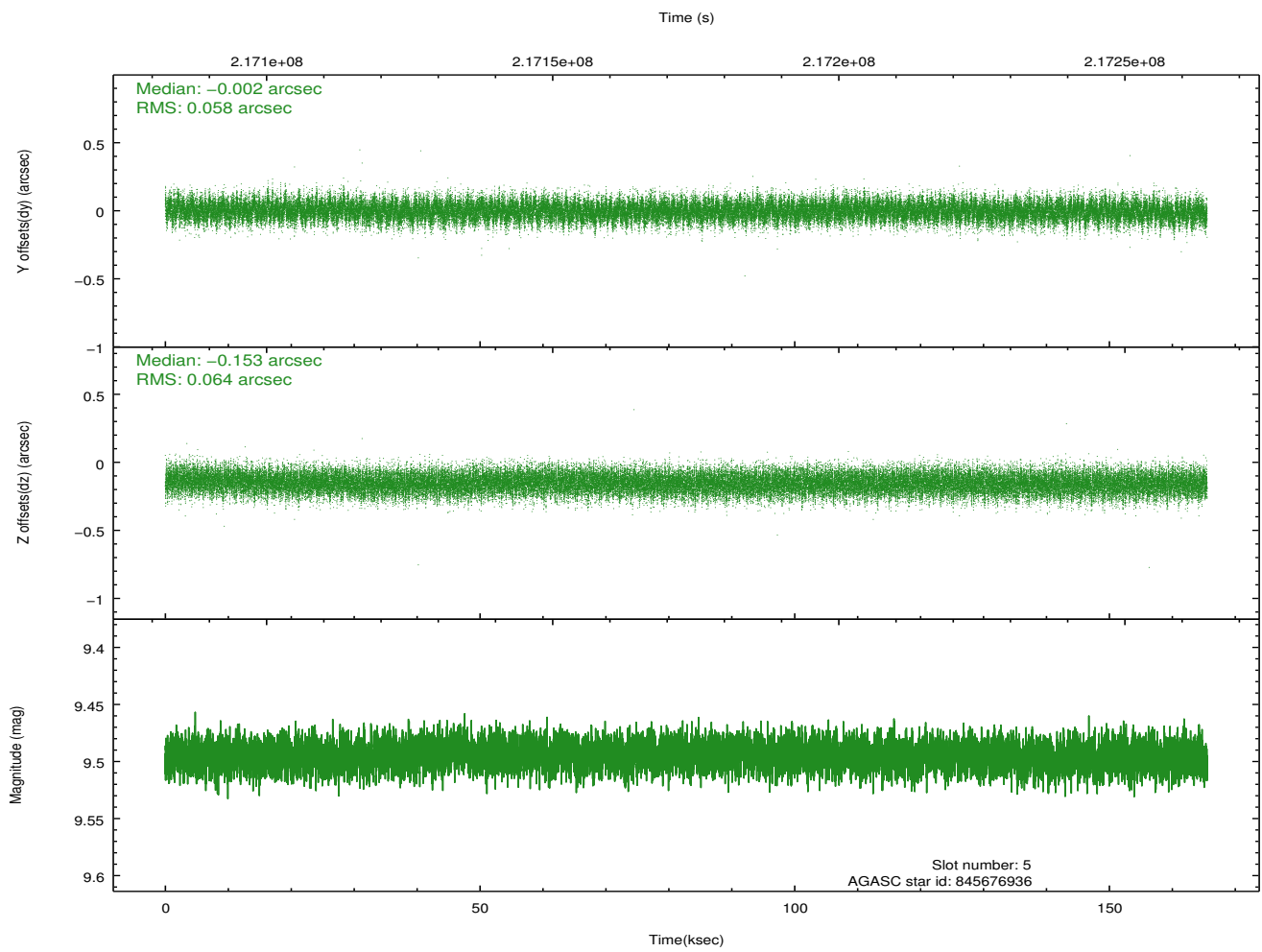
2.4.1 Slot 3



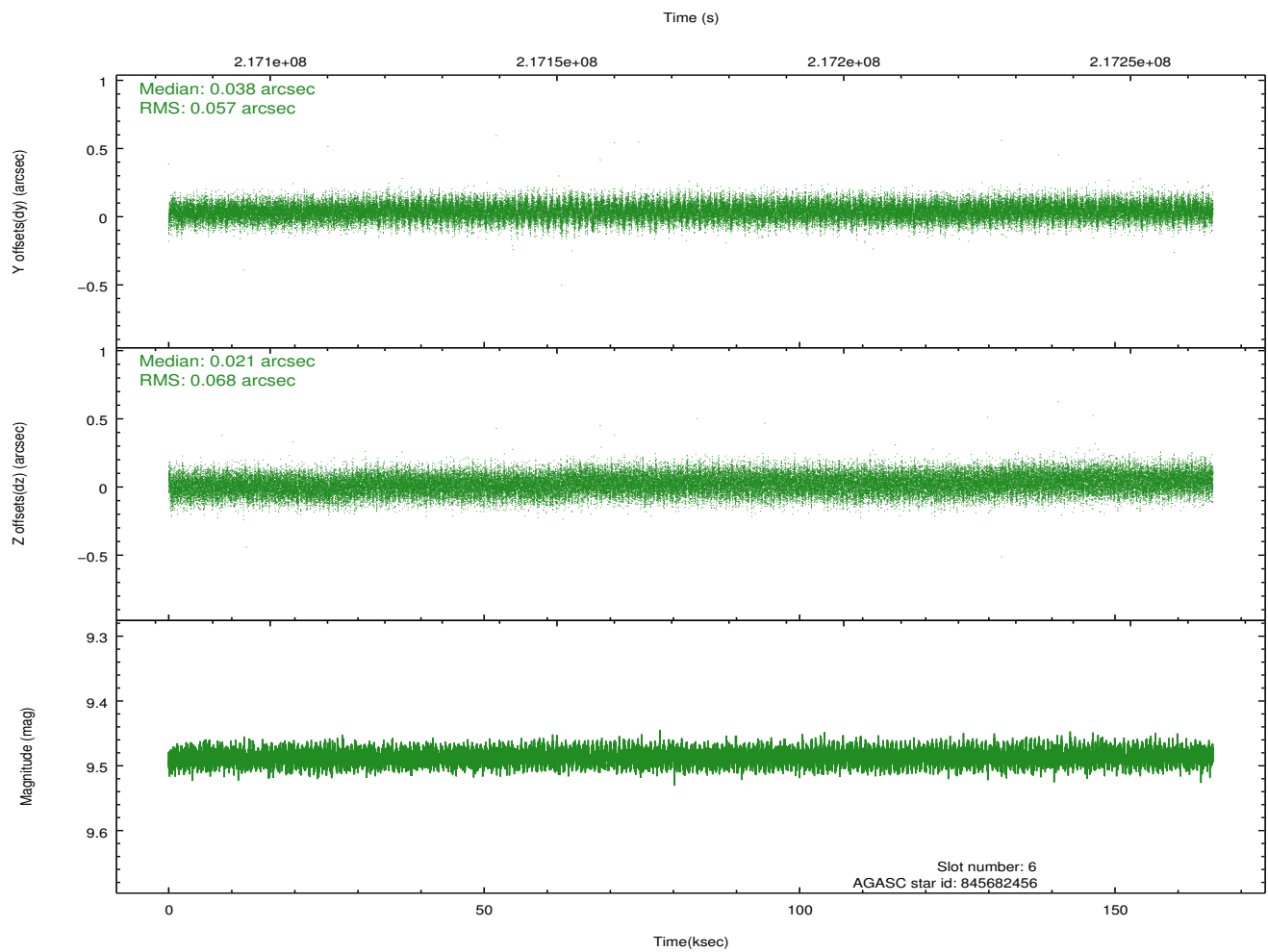
2.4.2 Slot 4



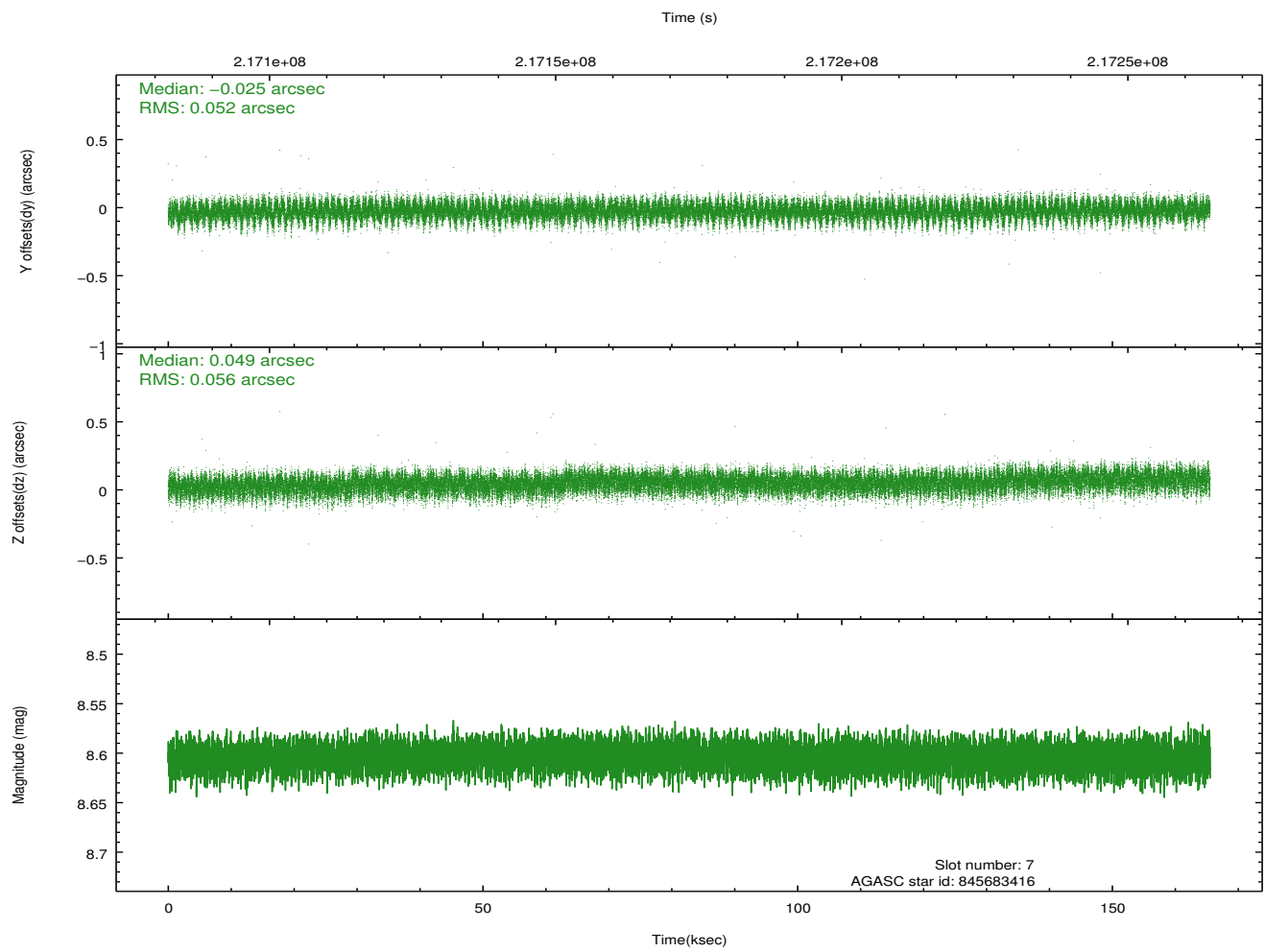
2.4.3 Slot 5



2.4.4 Slot 6

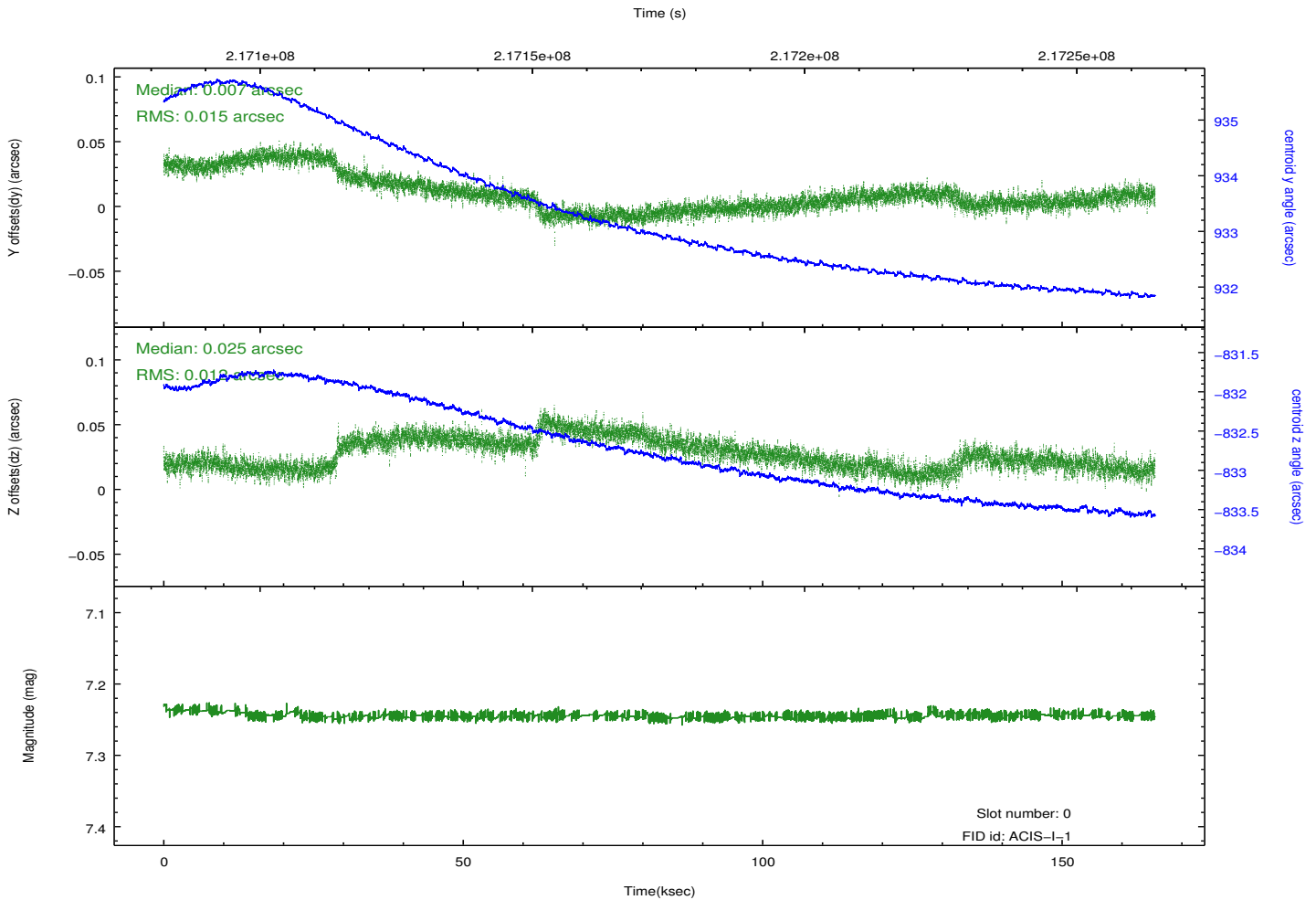
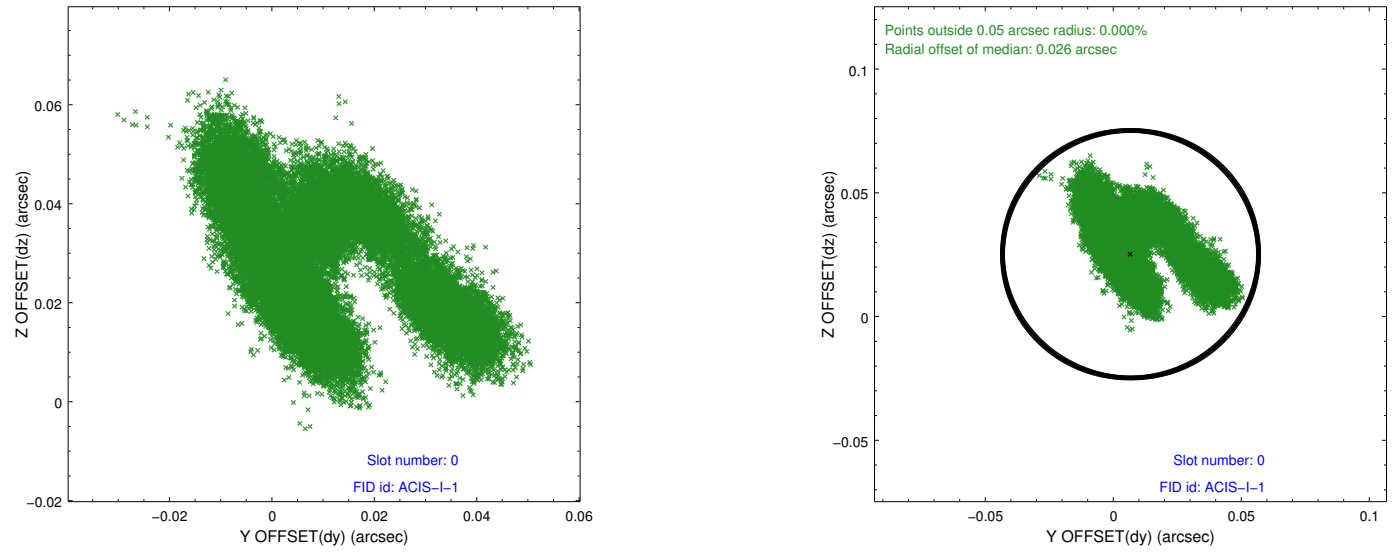


2.4.5 Slot 7

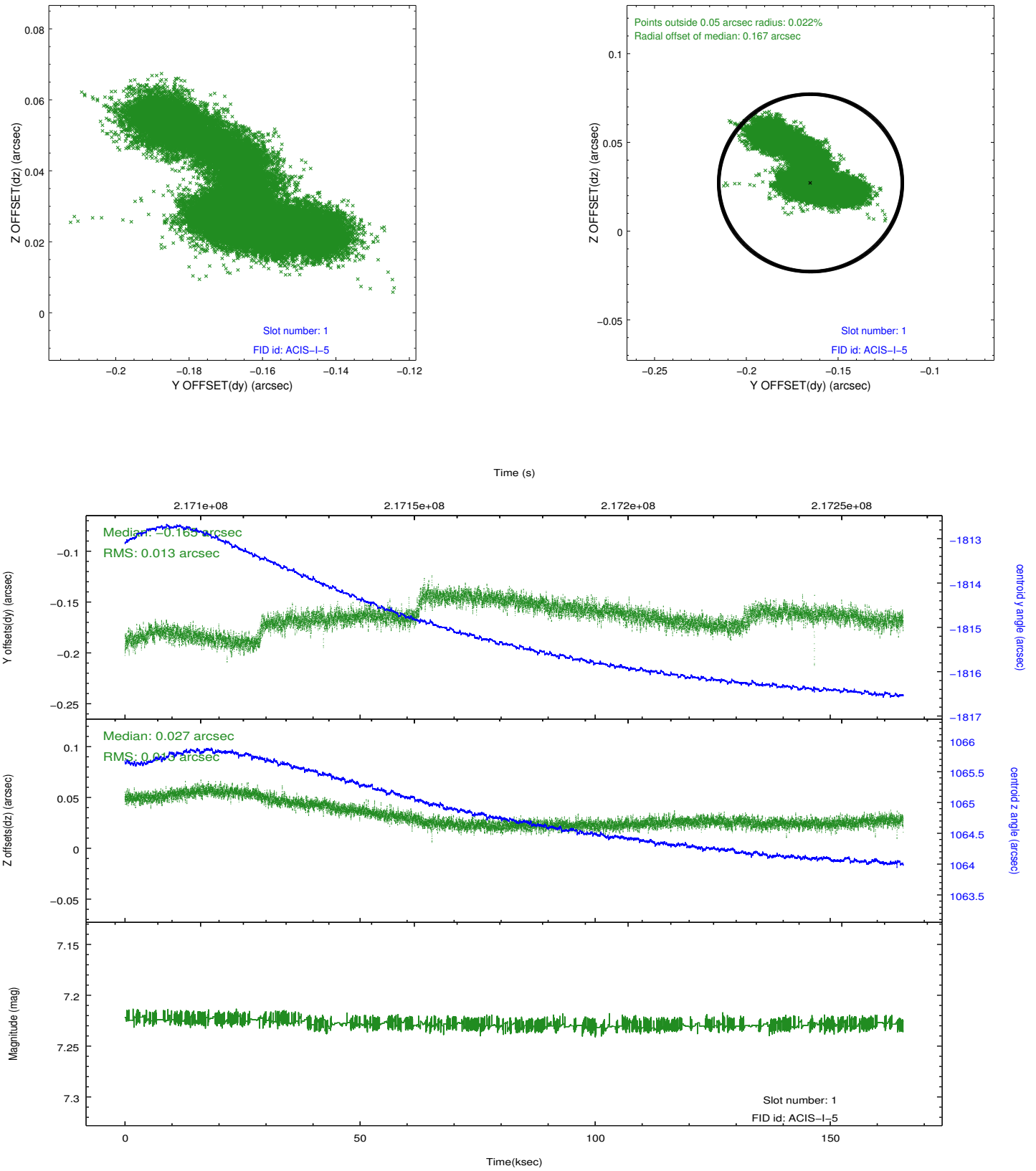


2.5 FID Slots

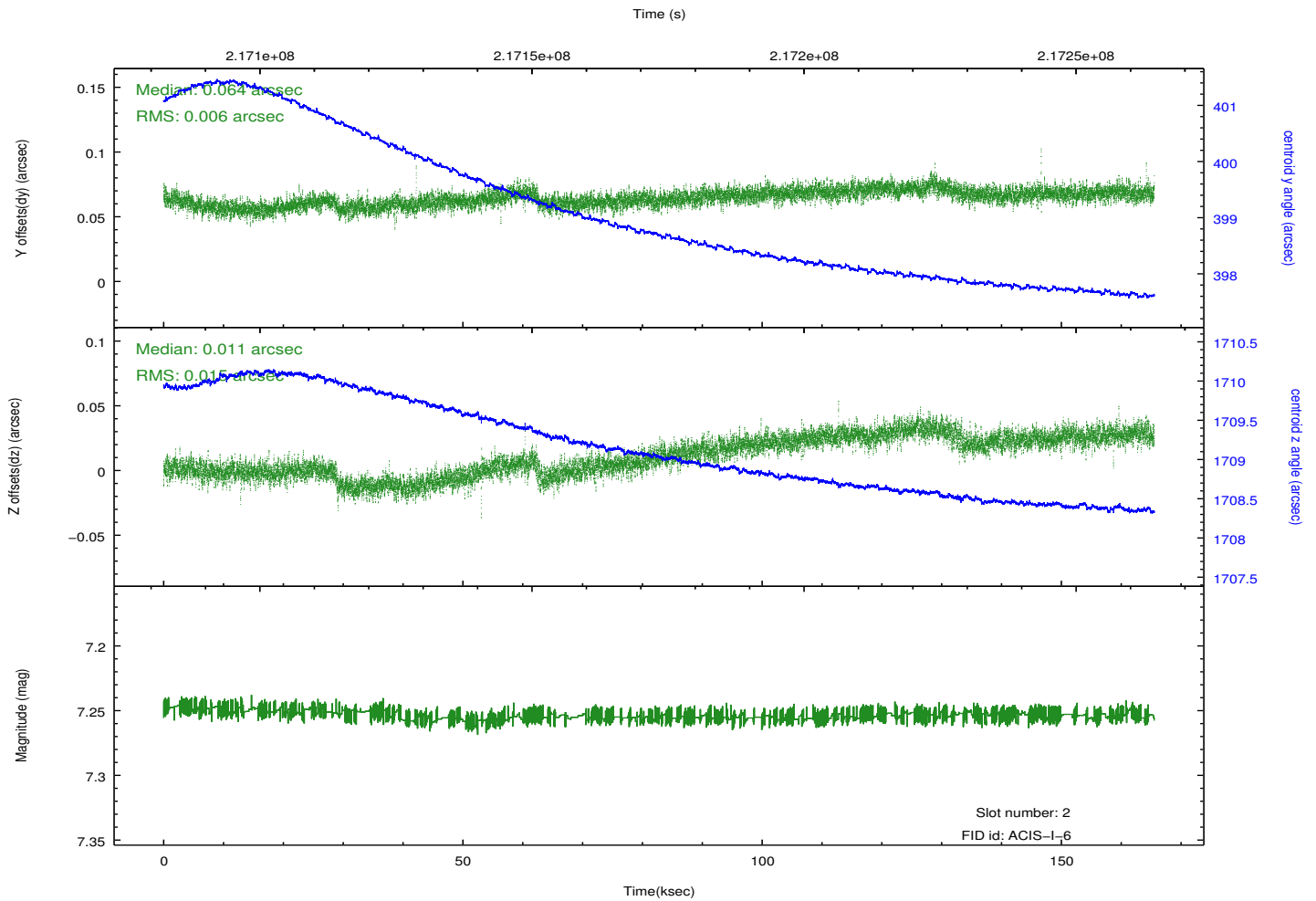
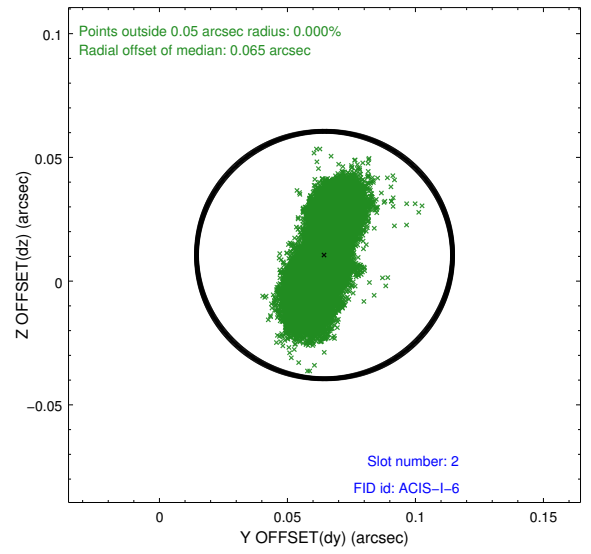
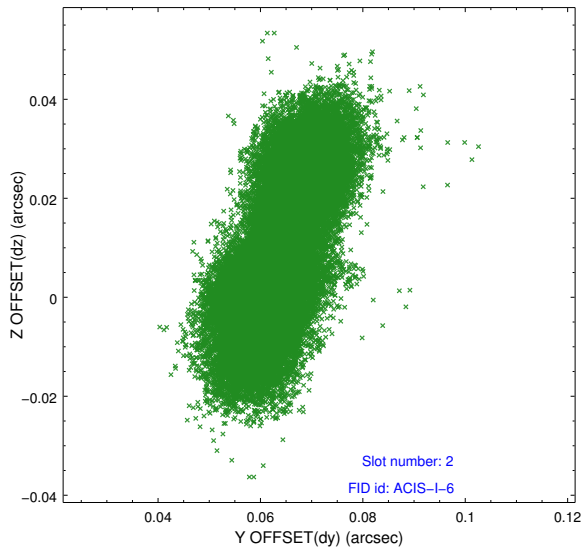
2.5.1 Slot 0



2.5.2 Slot 1



2.5.3 Slot 2



A Summary

A.1 Status

V&V Scientist	Beth Sundheim
V&V Date (YYYY-MM-DD)	2013.03.18
V&V Edition	2
V&V Disposition and Status	OK
V&V Charge Time	165.288

A.2 Comments

Roll preference met.