

# V&V Reference Report

## L2 ASCDS Version : 8.5.1.1

Observation 5479 - L2 Version 3  
Chandra X-Ray Center

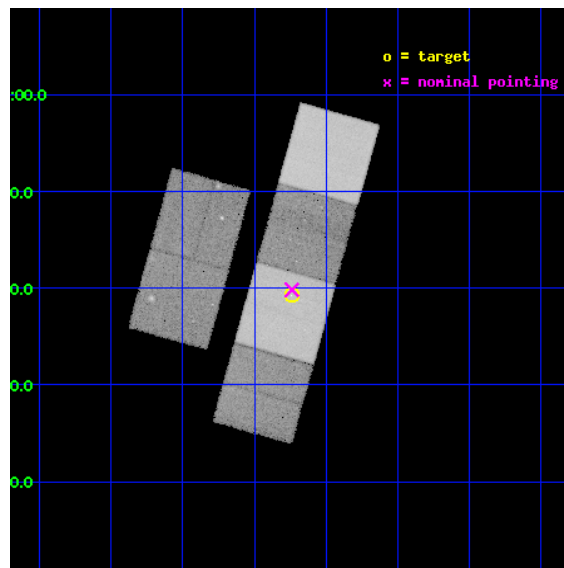
L2 Processing Date : Dec 27 2012

## Contents

<b>1</b>	<b>Front</b>	<b>2</b>
<b>2</b>	<b>OBI</b>	<b>3</b>
2.1	OBI . . . . .	3
2.1.1	Images . . . . .	3
2.1.2	Bias . . . . .	3
2.1.3	Parameters . . . . .	4
2.1.4	Events . . . . .	4
2.2	Compared Parameters . . . . .	5
2.3	Aspect . . . . .	6
2.4	Star Slots . . . . .	9
2.4.1	Slot 3 . . . . .	9
2.4.2	Slot 4 . . . . .	10
2.4.3	Slot 5 . . . . .	11
2.4.4	Slot 6 . . . . .	12
2.4.5	Slot 7 . . . . .	13
2.5	FID Slots . . . . .	14
2.5.1	Slot 0 . . . . .	14
2.5.2	Slot 1 . . . . .	15
2.5.3	Slot 2 . . . . .	16
<b>A</b>	<b>Summary</b>	<b>17</b>
A.1	Status . . . . .	17
A.2	Comments . . . . .	17

# 1 Front

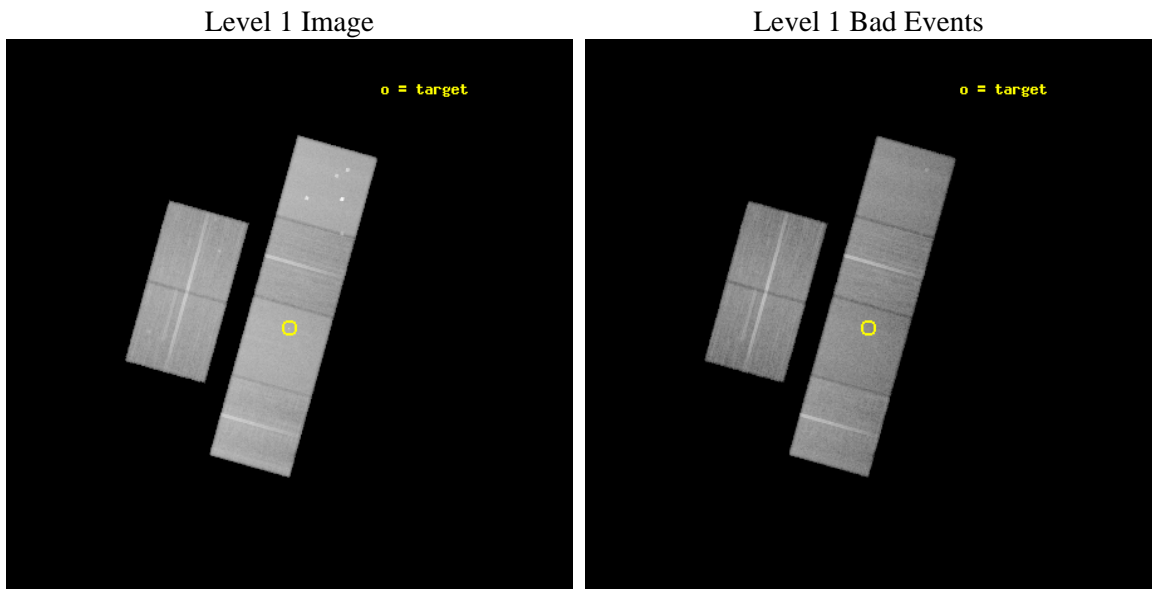
seq_num	400409	Sequence number
obs_id	5479	Observation id
title	Testing and extending the fundamental plane of black hole activity	&#160
observer	Prof. Rob Fender	Principal investigator
object	A0620-00	Source name
dtcycle	0	&#160
cycle	P	events from which exps? Prim/Second/Both
ra_targ	95.685417	Observer's specified target RA [deg]
dec_targ	-0.345833	Observer's specified target Dec [deg]
ra_nom	95.684482862018	Nominal RA [deg]
dec_nom	-0.33620660203107	Nominal Dec [deg]
roll_nom	105.59076727667	Nominal Roll [deg]
revision	3	Processing version of data
ontime	40131.1998505	Sum of GTIs [s]
livetime	39623.034433885	Livetime [s]
ontime2	40131.1998505	Sum of GTIs [s]
ontime3	40127.958860308	Sum of GTIs [s]
ontime5	40131.1998505	Sum of GTIs [s]
ontime6	40131.1998505	Sum of GTIs [s]
ontime7	40131.1998505	Sum of GTIs [s]
ontime8	40131.1998505	Sum of GTIs [s]
l2events	493296	Number of level 2 events



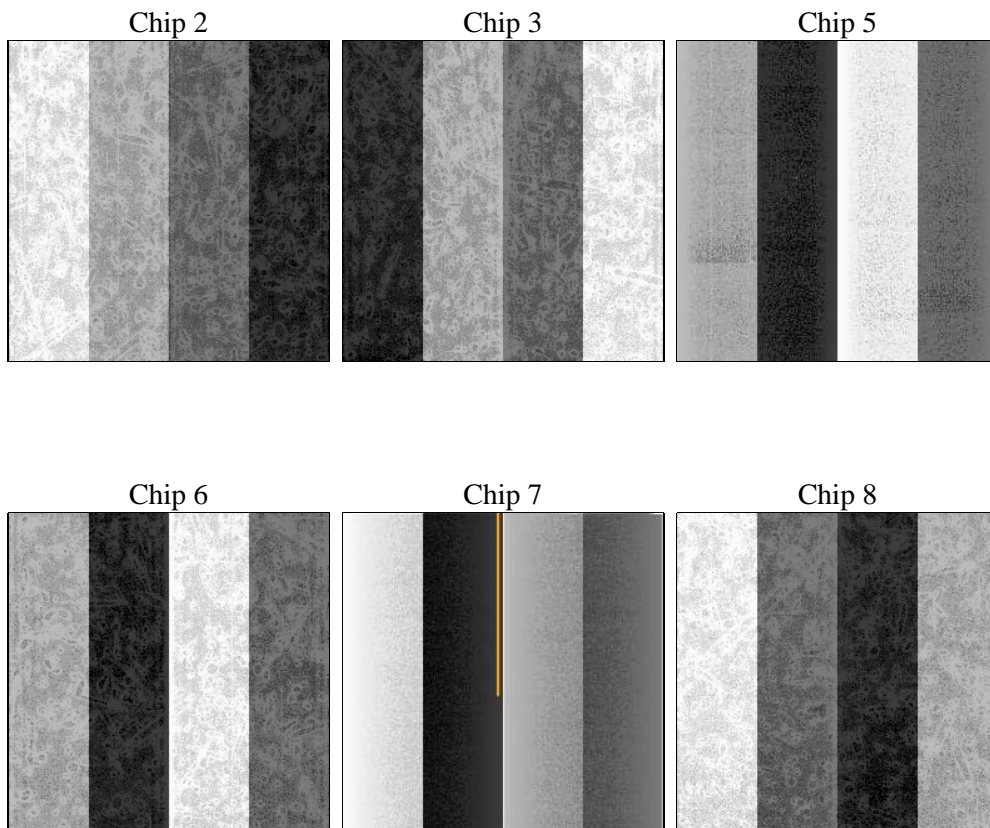
## 2 OBI

### 2.1 OBI

#### 2.1.1 Images



#### 2.1.2 Bias



### 2.1.3 Parameters

obi_num	0	Obi number	sched_exp_time	40000.000000	[s] Scheduled observation exposure time
ascdsver	8.5.1.1	Processing system revision	ontime	40131.1998505	Sum of GTIs [s]
caldbver	4.5.5	&#160	ontime2	40131.1998505	Sum of GTIs [s]
date	2012-12-27T22:58:10	Date and time of file creation	ontime3	40127.958860308	Sum of GTIs [s]
revision	3	Processing version of data	ontime5	40131.1998505	Sum of GTIs [s]
			ontime6	40131.1998505	Sum of GTIs [s]
			ontime7	40131.1998505	Sum of GTIs [s]
			ontime8	40131.1998505	Sum of GTIs [s]
			l1events	2259553	Number of level 1 events

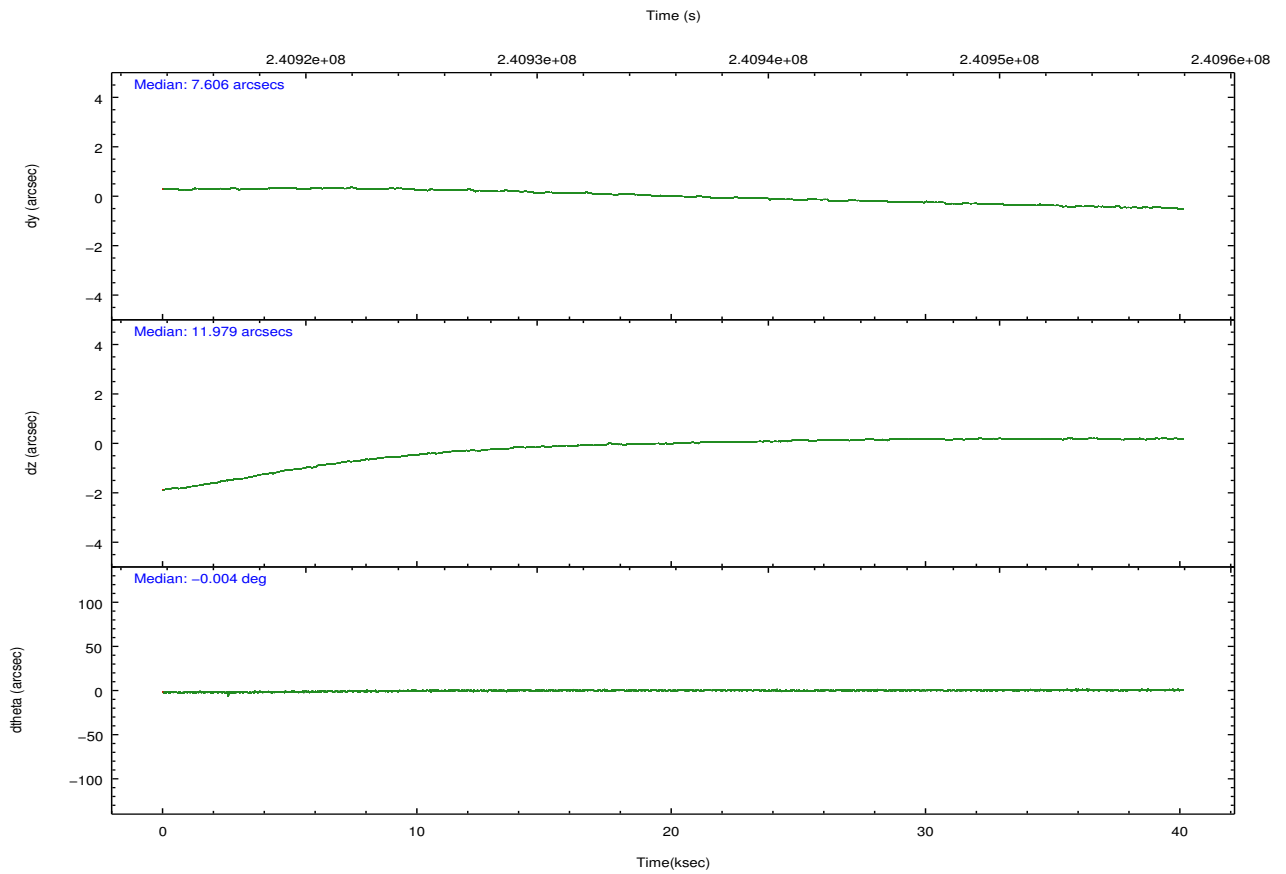
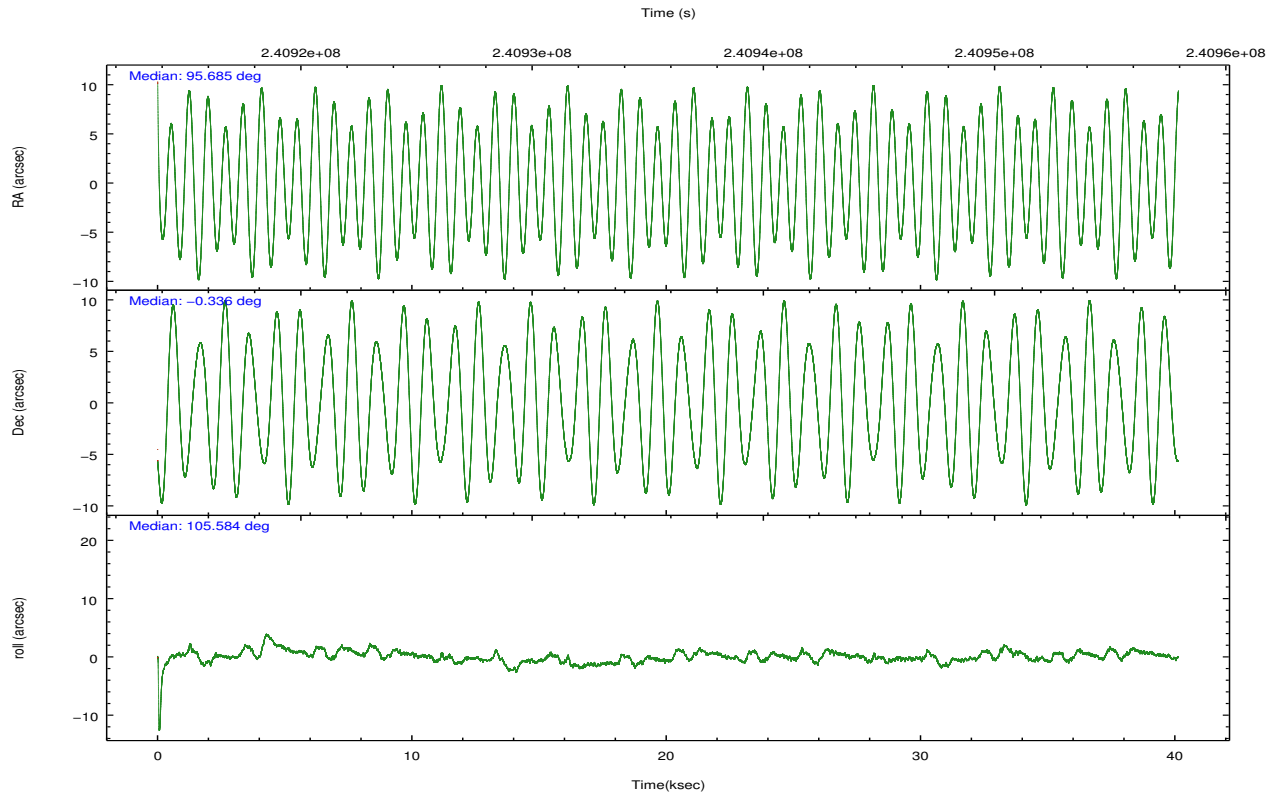
### 2.1.4 Events

	ccd 2	ccd 3	ccd 5	ccd 6	ccd 7	ccd 8		ccd 2	ccd 3	ccd 5	ccd 6	ccd 7	ccd 8
level 1 events	319888	307360	485193	320117	429998	396997	grade 0 events	17132	16190	30949	14657	15421	26771
rejected events	282934	271565	267326	284084	258741	313787		5%	5%	6%	4%	3%	6%
rejected %	88%	88%	55%	88%	60%	79%	grade 1 events	201	191	764	137	408	263
								0%	0%	0%	0%	0%	0%
							grade 2 events	7835	7089	64908	7884	35308	19281
								2%	2%	13%	2%	8%	4%
							grade 3 events	3495	3544	8069	3600	15562	9152
								1%	1%	1%	1%	3%	2%
							grade 4 events	3510	3520	7692	3487	15437	8619
								1%	1%	1%	1%	3%	2%
							grade 5 events	12525	14191	34273	14502	41003	19535
								3%	4%	7%	4%	9%	4%
							grade 6 events	6266	6642	114254	7701	95559	22084
								1%	2%	23%	2%	22%	5%
							grade 7 events	268924	255993	224284	268149	211300	291292
								84%	83%	46%	83%	49%	73%

## 2.2 Compared Parameters

Parameter	Planned	Actual	Parameter	Planned	Actual
Instrument	ACIS	ACIS	Obspar format version number	7	7
Detector	ACIS-235678	ACIS-235678	Obspar file type	PREDICTED	ACTUAL
Grating	NONE	NONE	Obspar update status	NONE	UPDATED
Data mode	FAINT	FAINT	Number of optional ACIS chips dropped	0	0
Observation mode	POINTING	POINTING	On-chip summing requested	N	N
[deg] Pointing RA	95.704199	95.68448286201787	Subarray requested	NONE	NONE
[deg] Pointing Dec	-0.355002	-0.3362066020310701	Alternating exposures requested	N	N
[deg] Pointing Roll	105.434256	105.5907672766744	[s] Primary exposure time	0.000000	3.2
[mm] SIM focus pos	-0.684267	-0.6828225247311905			
[mm] SIM defocus	0	0.001444936568705701			
[mm] SIM translation stage pos	-190.132523	-190.1425803651734			
[mm] SIM translation stage offset	0	0.01005778216563158			
[s] Observation start time (MET)	240915952.184000	240914206.48371			
Observation start date	2005-08-20T09:04:48	2005-08-20T08:36:46			
[s] Observation end time (MET)	240955952.184000	240956479.53565			
Observation end date	2005-08-20T20:11:28	2005-08-20T20:21:19			
Read mode	TIMED	TIMED			

## 2.3 Aspect

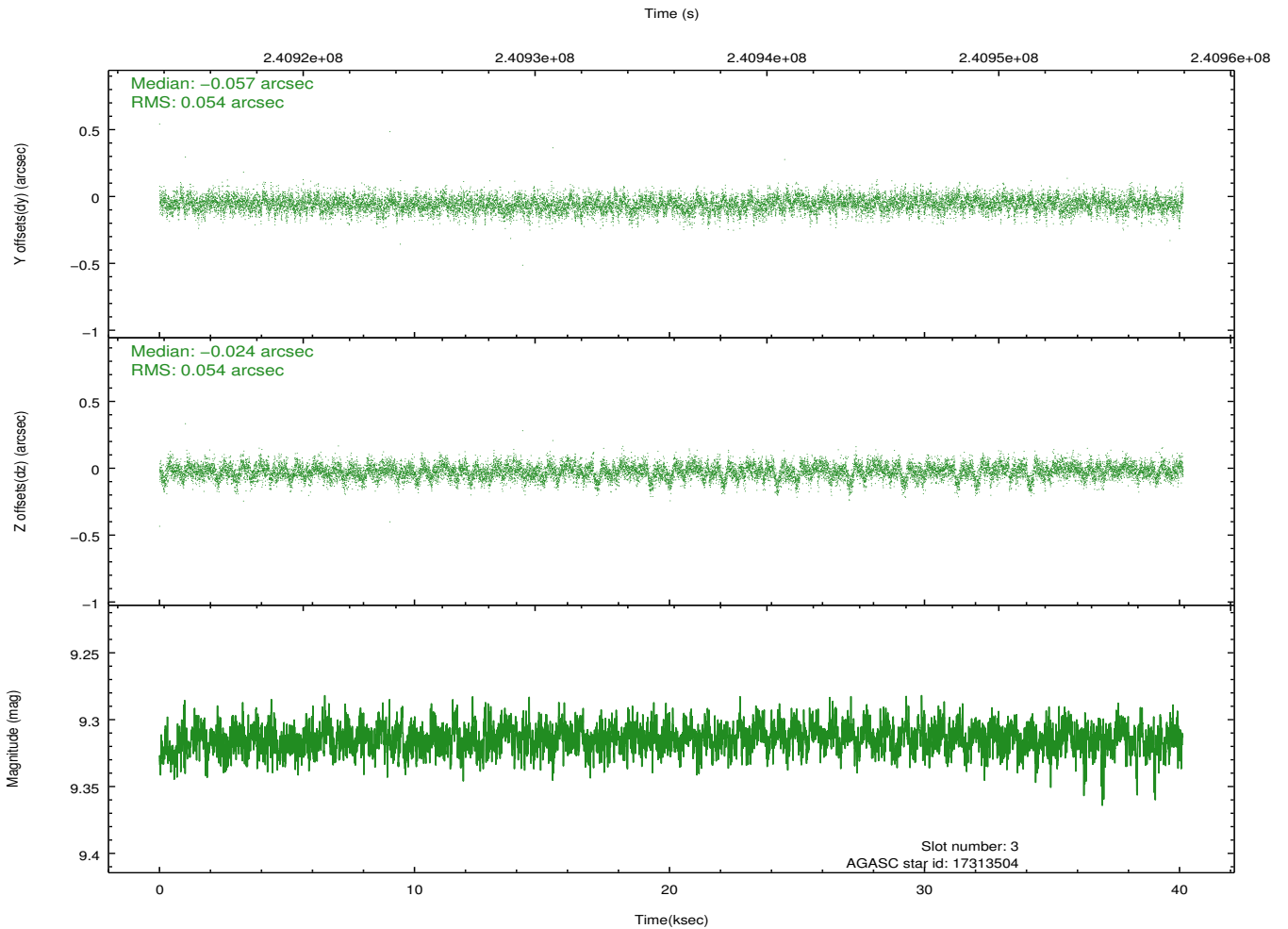
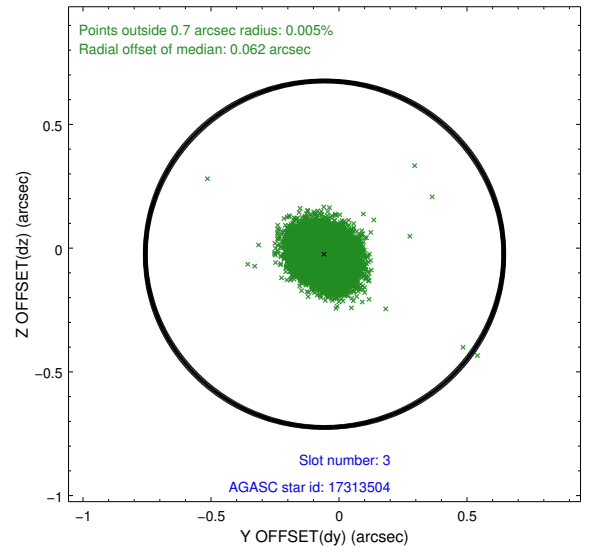
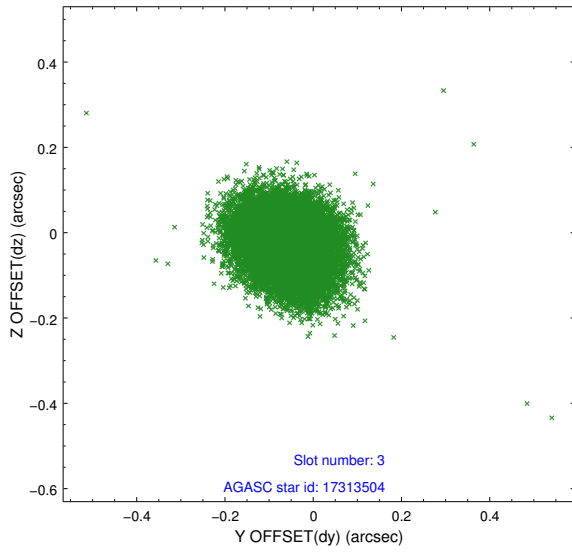


### Slot Statistics

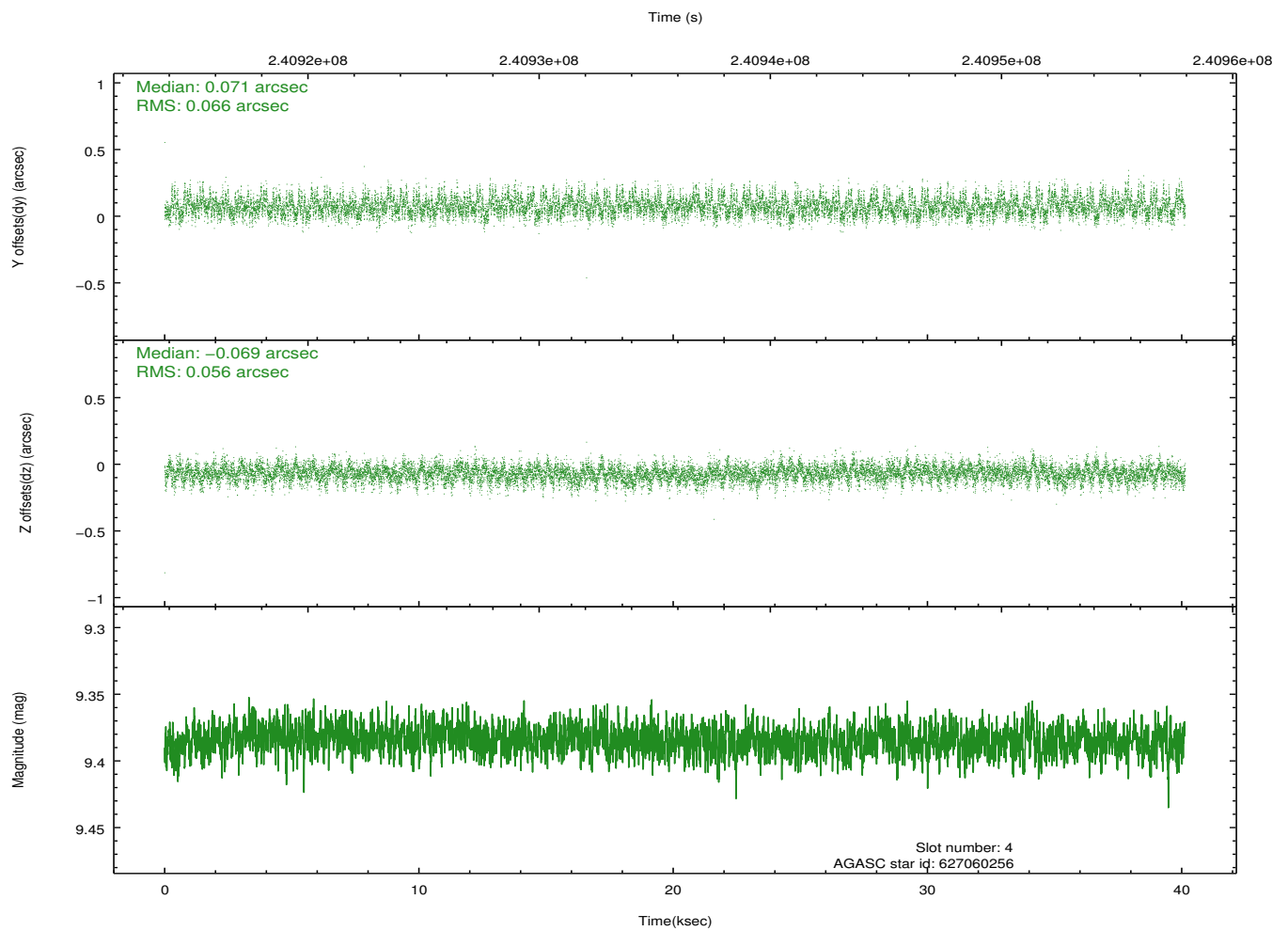
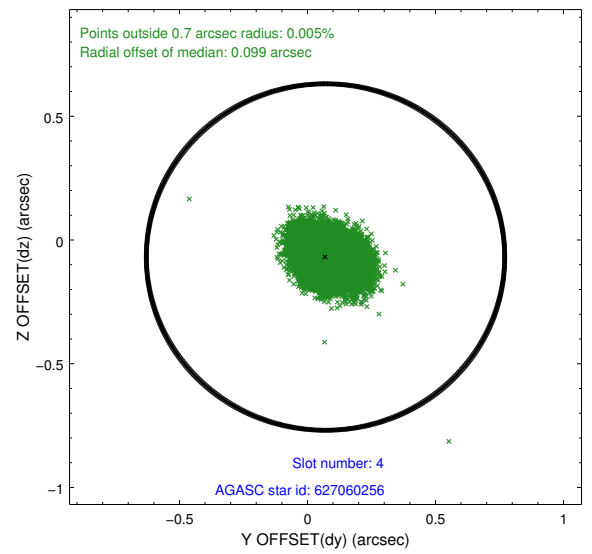
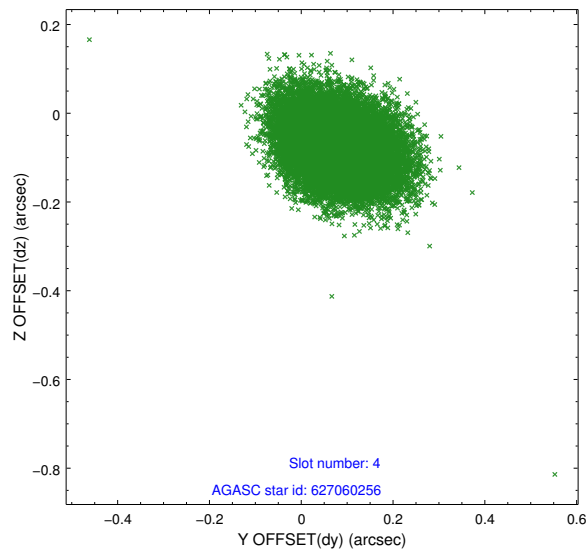
slot	status	id	mag	n_pts	med_dy	med_dz	dr1	dr2	ra	dec	mean_y	mean_z
0	FID	ACIS-S-2	7.10	9790	-0.046	-0.031	0.013	0.025	0.000000	0.000000	-760.40	-1733.00
1	FID	ACIS-S-4	7.20	9788	0.064	0.010	0.010	0.020	0.000000	0.000000	2152.97	175.52
2	FID	ACIS-S-6	7.35	9790	-0.047	0.026	0.010	0.018	0.000000	0.000000	401.59	812.94
3	GUIDE	17313504	9.31	19568	-0.057	-0.024	0.080	0.133	95.559302	0.008928	1401.68	154.59
4	GUIDE	627060256	9.38	19565	0.071	-0.069	0.092	0.151	95.367778	-0.918062	-1631.59	1706.79
5	GUIDE	627187008	8.06	19577	0.057	-0.055	0.067	0.106	95.706759	-0.833093	-1661.36	449.18
6	GUIDE	627187176	8.02	19551	-0.186	-0.097	0.055	0.088	95.647337	-0.234674	471.98	82.17
7	GUIDE	627197472	8.61	19575	0.109	0.245	0.093	0.144	96.421301	-0.454862	-1032.94	-2392.37

## 2.4 Star Slots

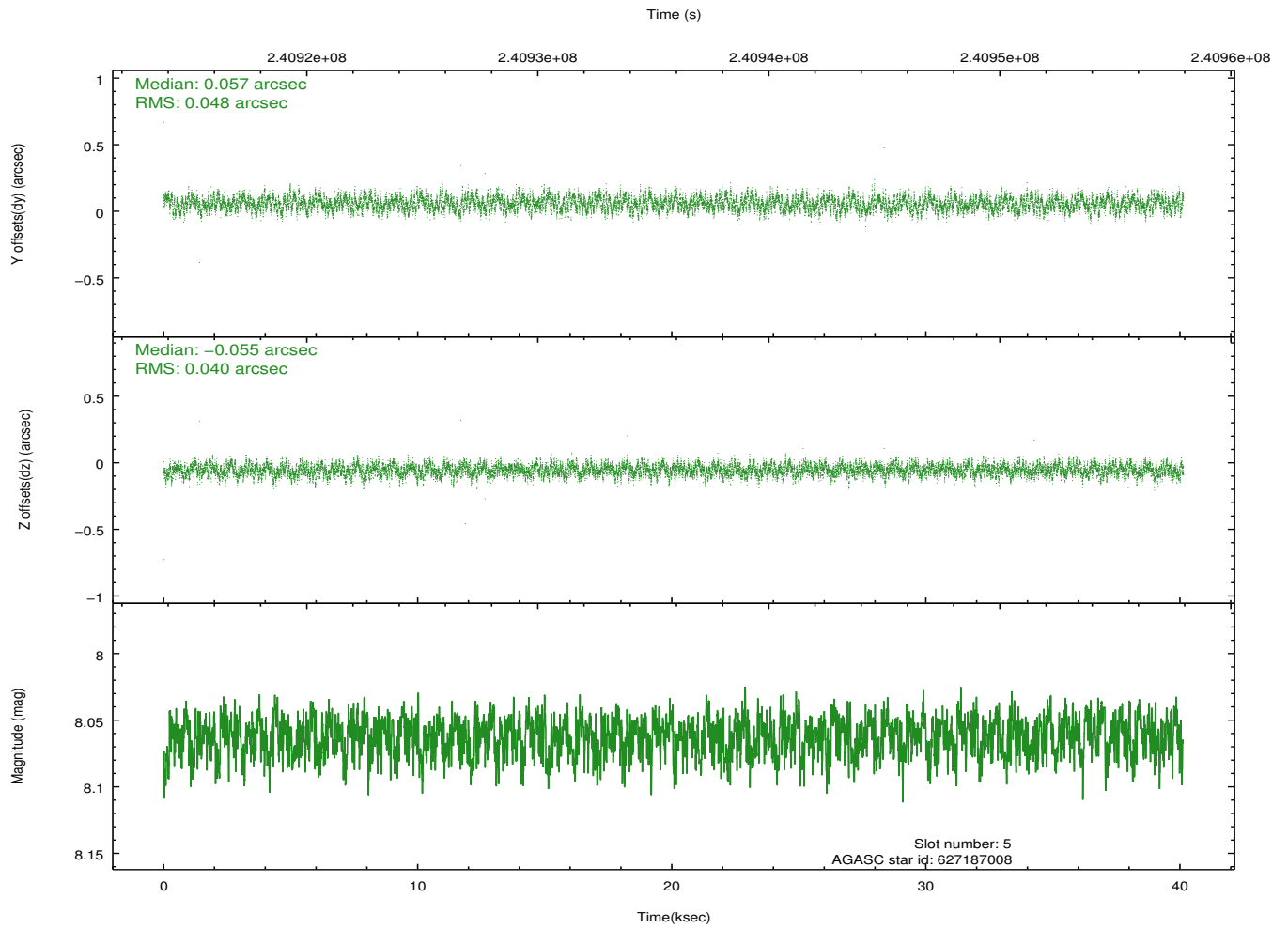
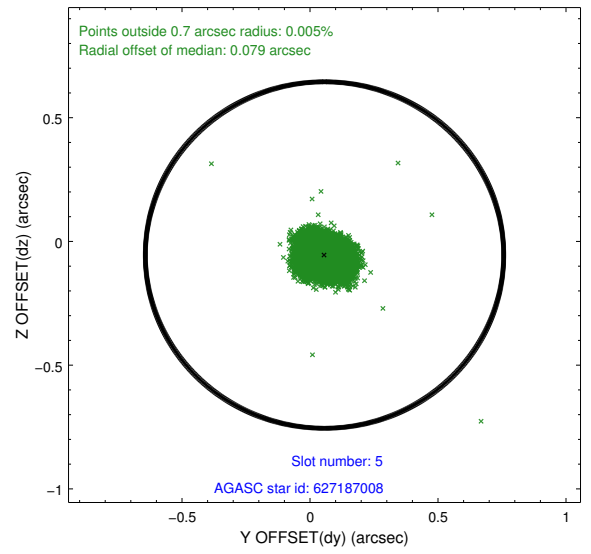
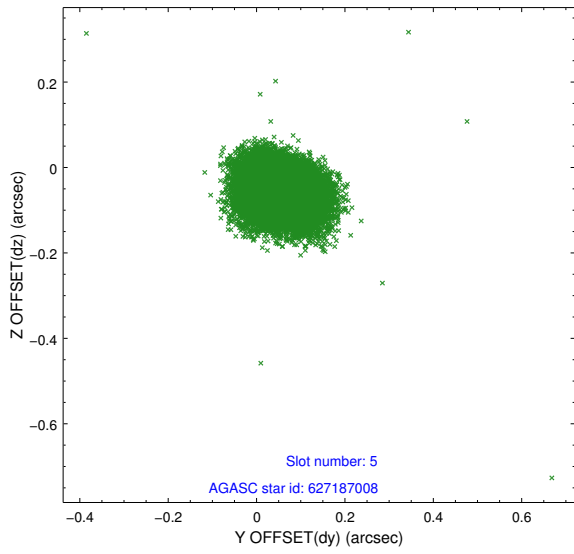
### 2.4.1 Slot 3



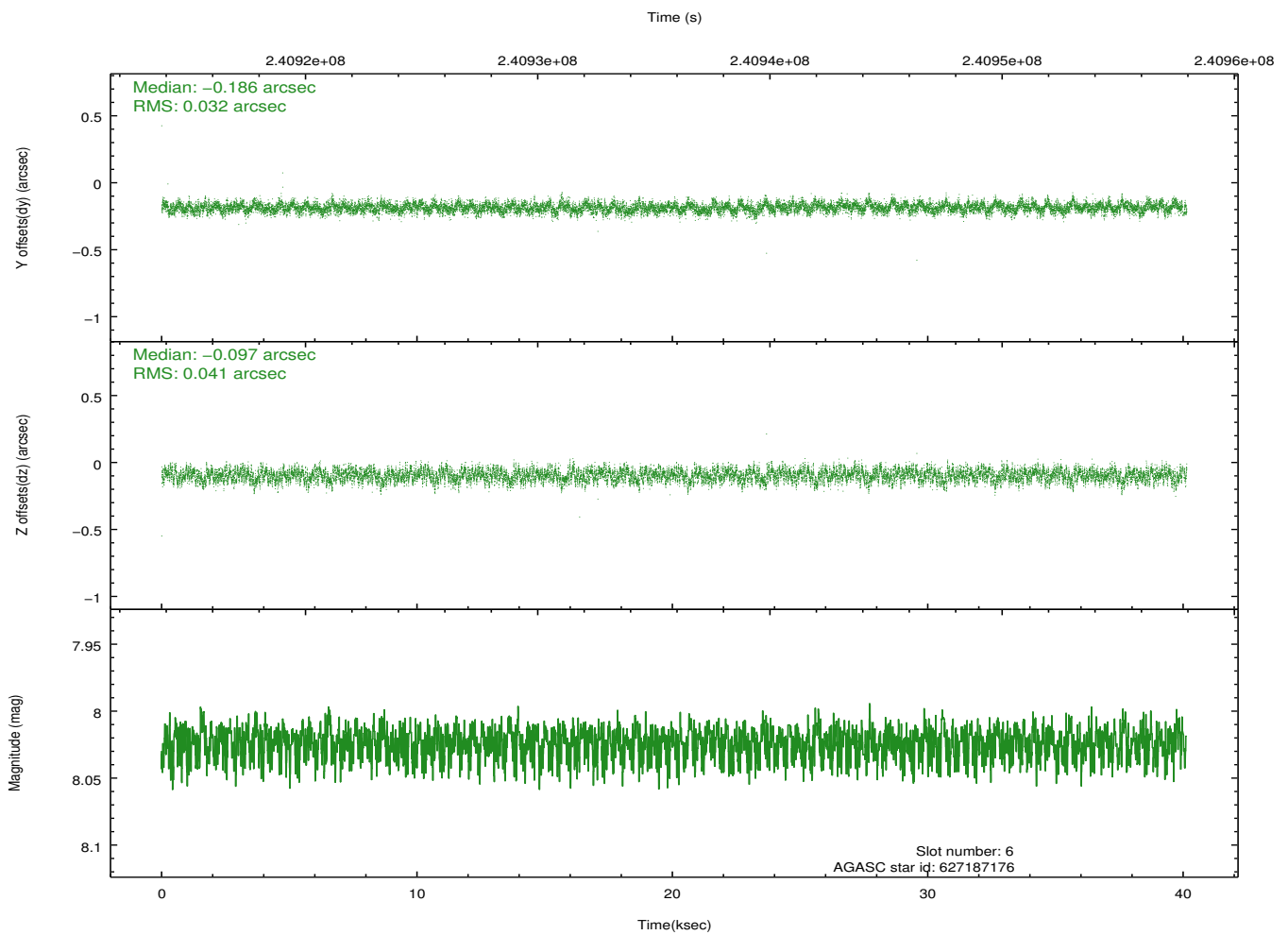
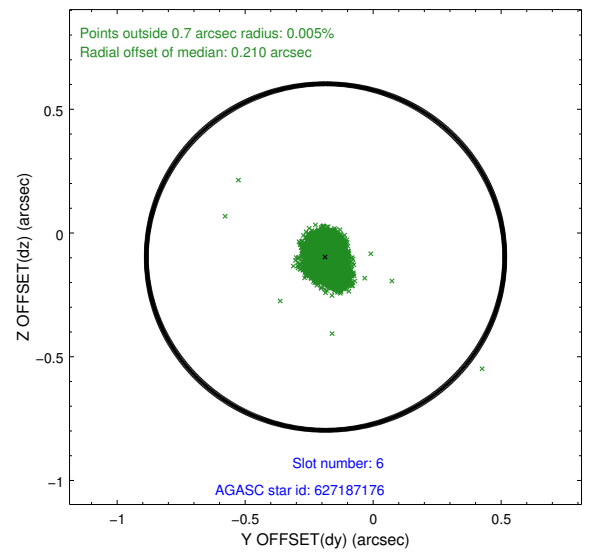
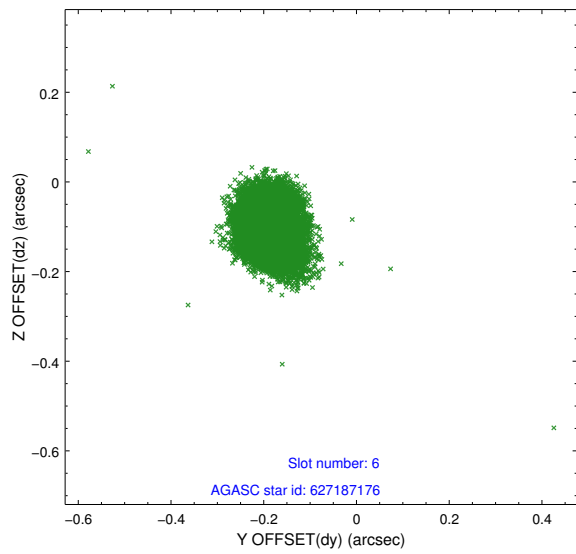
## 2.4.2 Slot 4



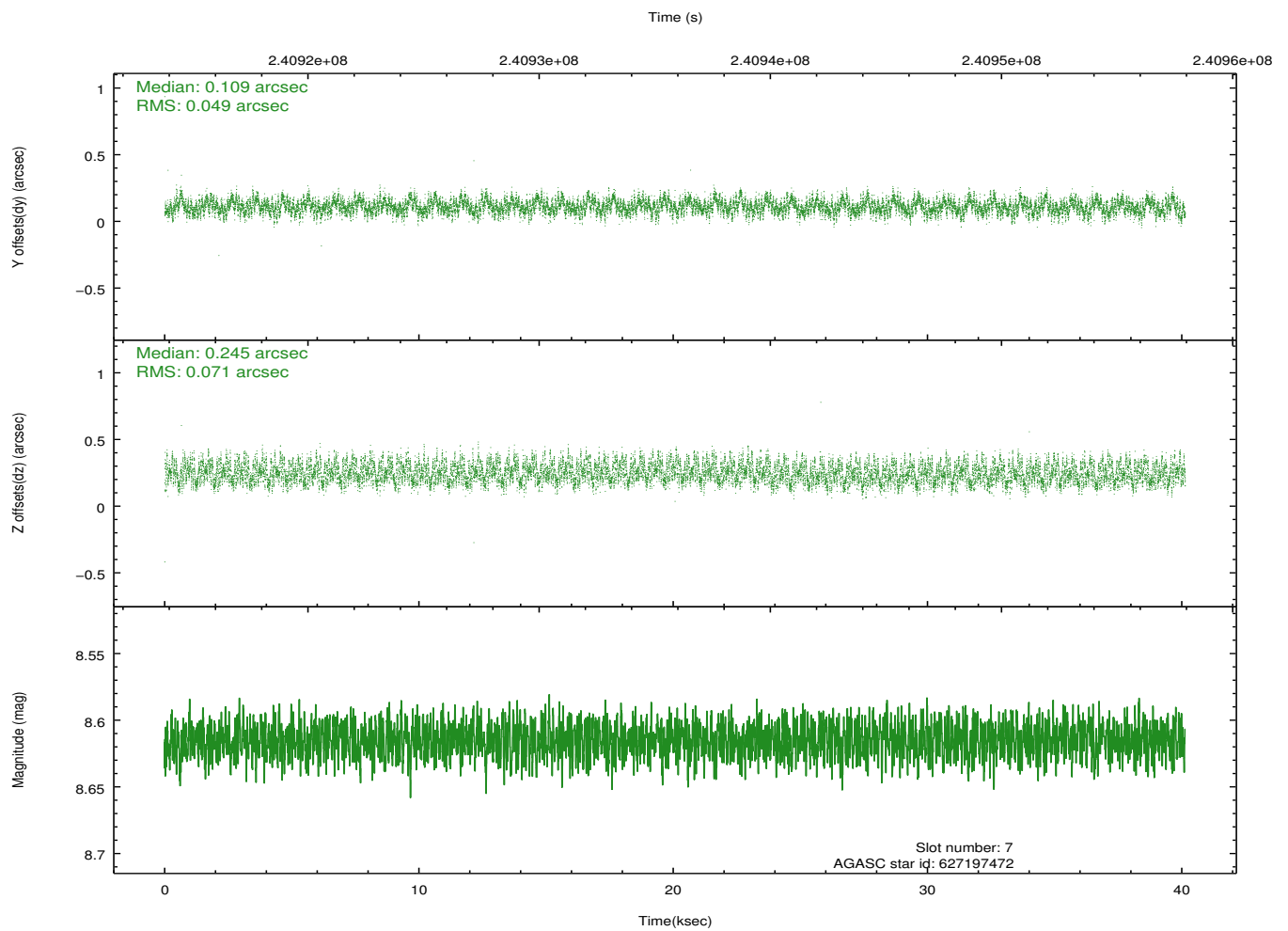
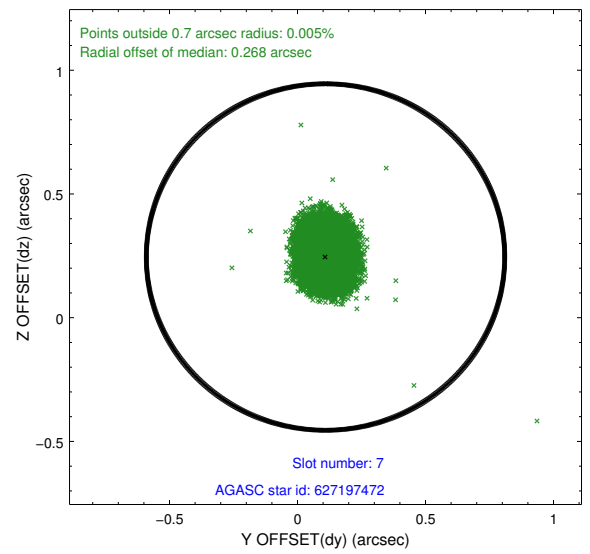
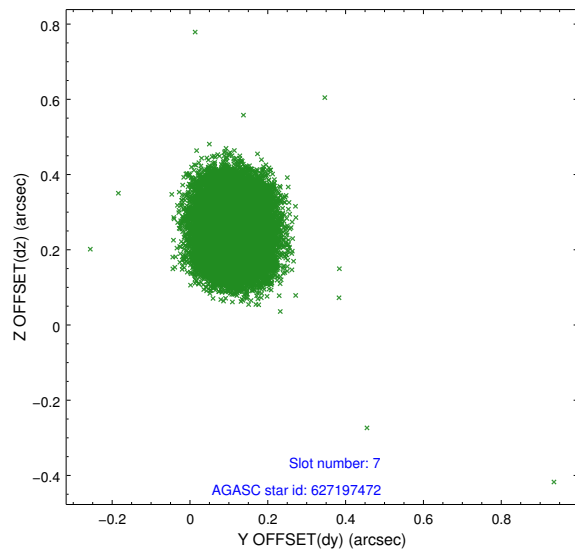
### 2.4.3 Slot 5



## 2.4.4 Slot 6

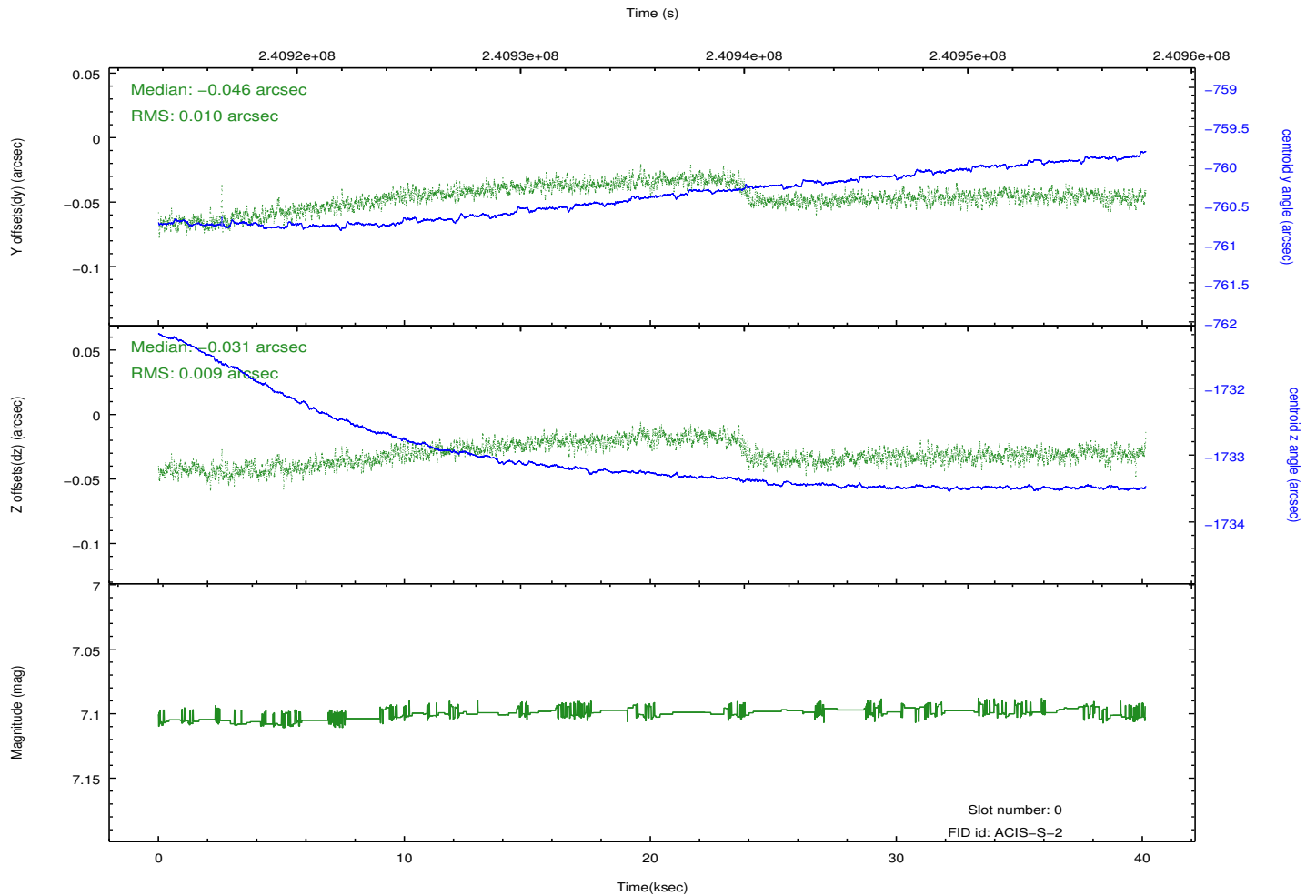
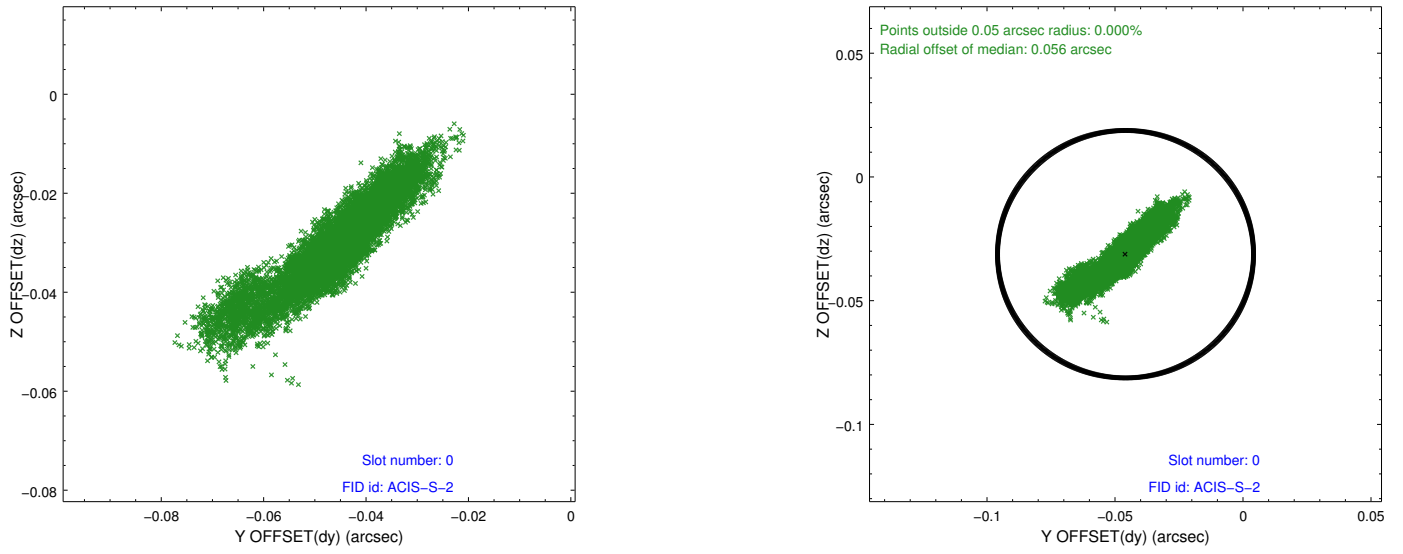


## 2.4.5 Slot 7

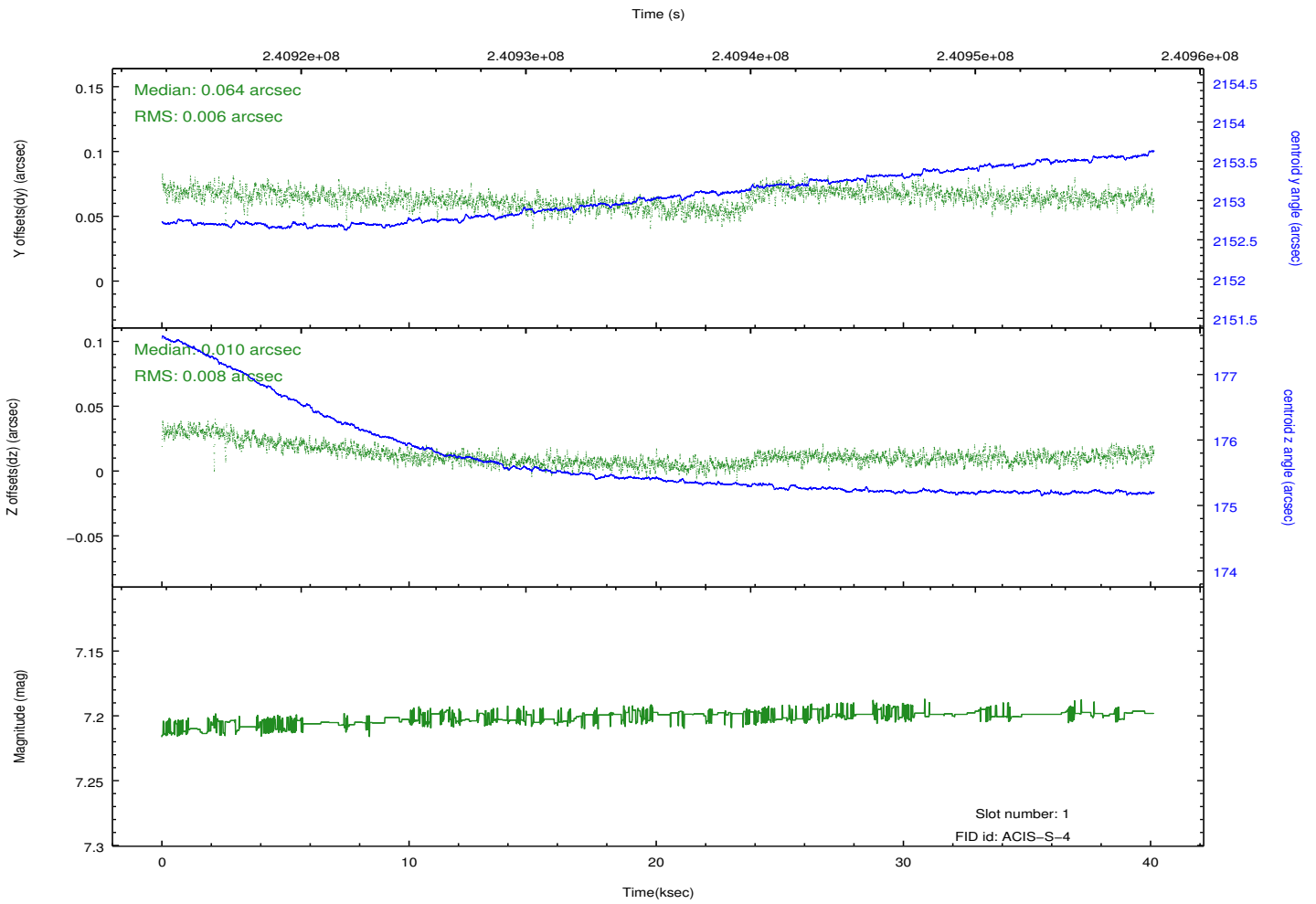
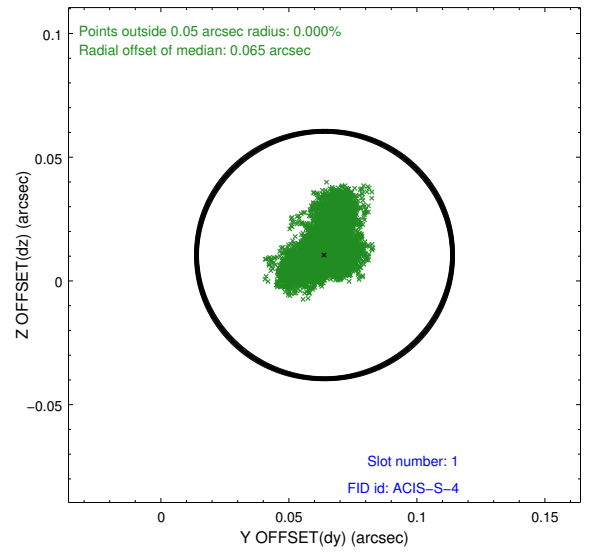
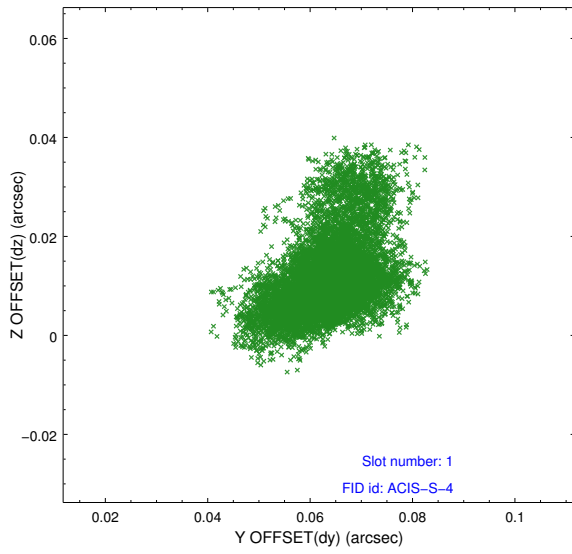


## 2.5 FID Slots

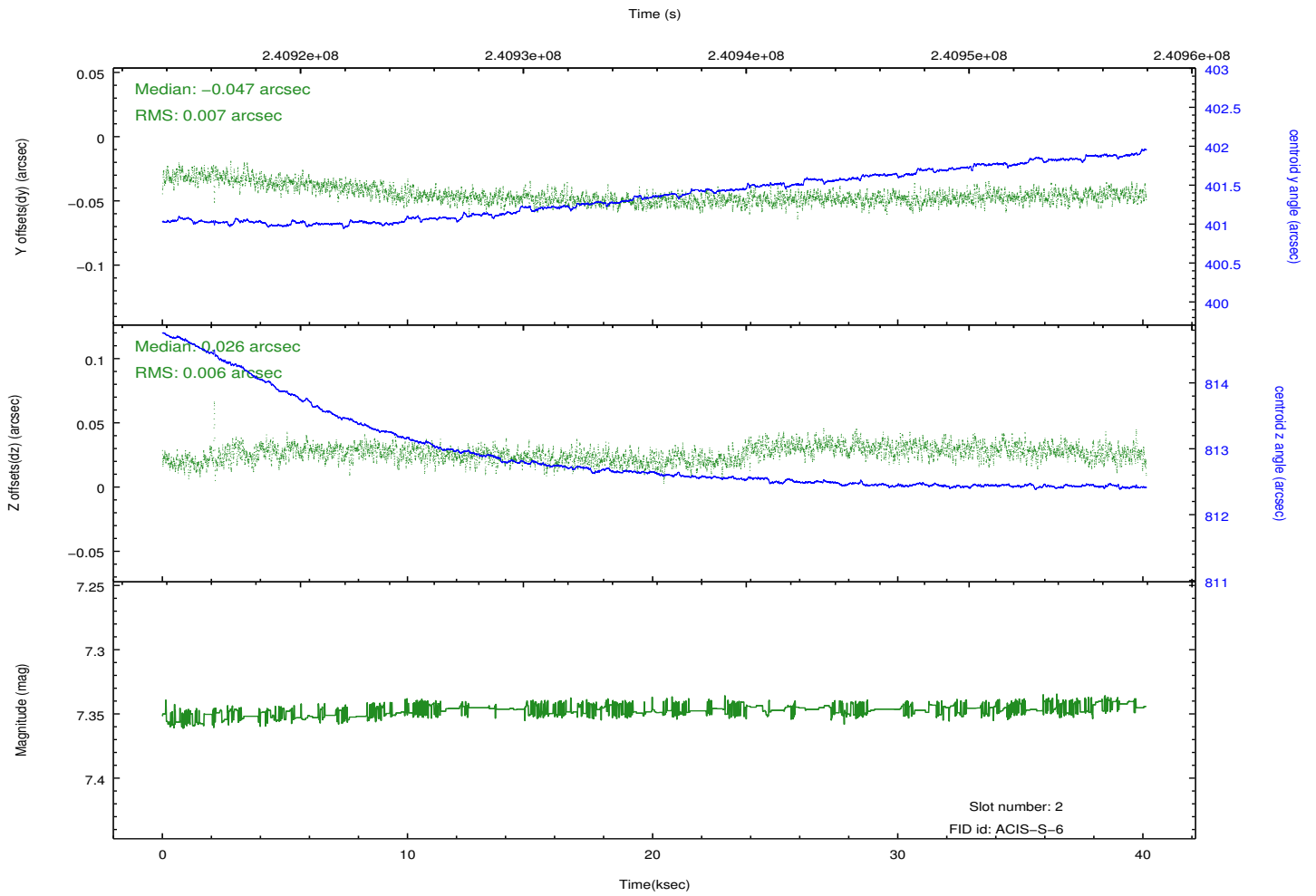
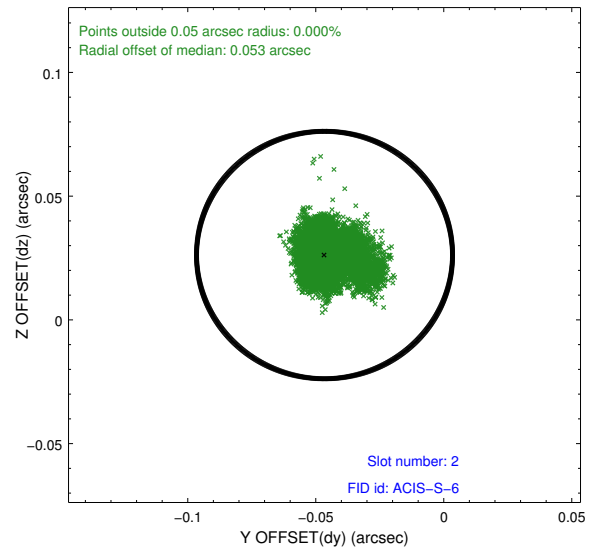
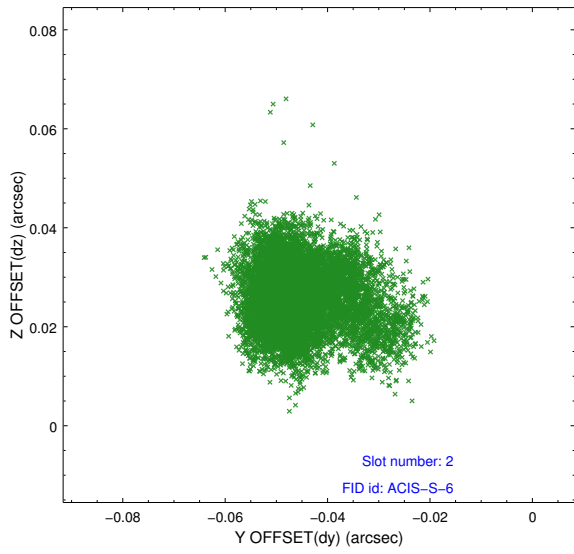
### 2.5.1 Slot 0



## 2.5.2 Slot 1



### 2.5.3 Slot 2



# A Summary

## A.1 Status

V&V Scientist	Jen Lauer
V&V Date (YYYY-MM-DD)	2013.01.24
V&V Edition	1
V&V Disposition and Status	OK
V&V Charge Time	40.13119

## A.2 Comments

Joint Proposal: NRAO