

V&V Reference Report

L2 ASCDS Version : 8.4.3

Observation 5749 - L2 Version 2
Chandra X-Ray Center

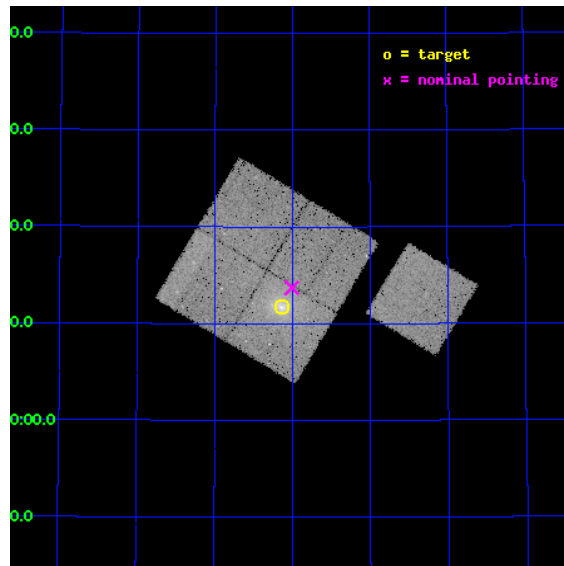
L2 Processing Date : Mar 31 2012

Contents

1	Front	2
2	OBI	3
2.1	OBI	3
2.1.1	Images	3
2.1.2	Bias	3
2.1.3	Parameters	4
2.1.4	Events	4
2.2	Compared Parameters	5
2.3	Aspect	6
2.4	Star Slots	9
2.4.1	Slot 3	9
2.4.2	Slot 4	10
2.4.3	Slot 5	11
2.4.4	Slot 6	12
2.4.5	Slot 7	13
2.5	FID Slots	14
2.5.1	Slot 0	14
2.5.2	Slot 1	15
2.5.3	Slot 2	16
A	Summary	17
A.1	Status	17
A.2	Comments	17

1 Front

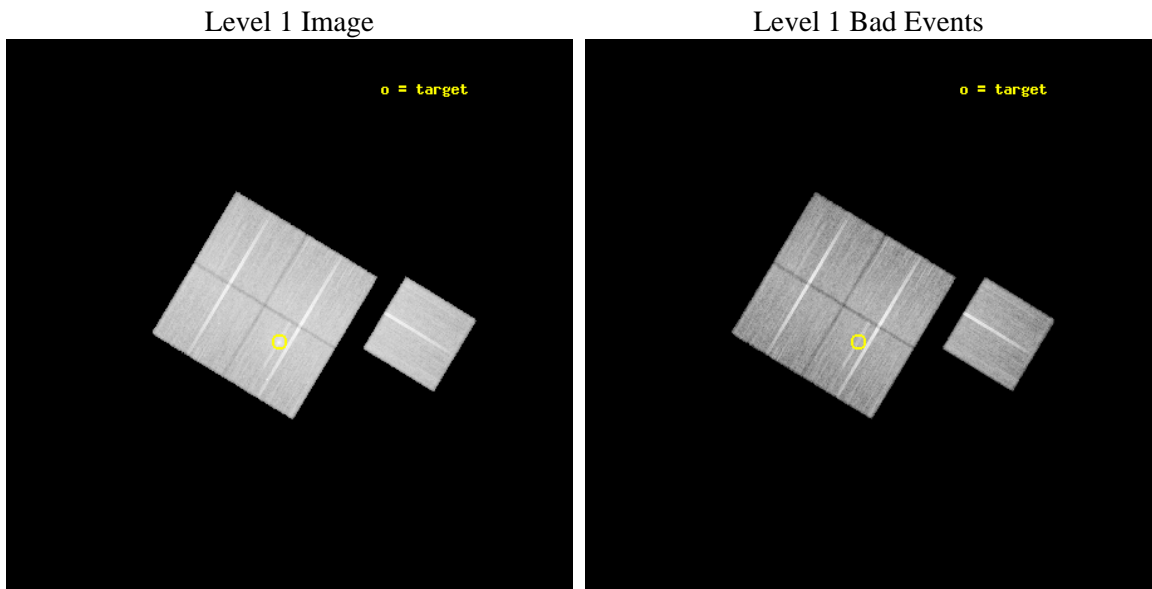
seq_num	800464	Sequence number
obs_id	5749	Observation id
title	Chandra observations of clusters of galaxies containing fossil radio sources	Proposal title
observer	Dr Matteo Murgia	Principal investigator
object	RXC J1852.1+5711	Source name
dtcycle	0	
cycle	P	events from which exps? Prim/Second/Both
ra_targ	283.034583	Observer's specified target RA [deg]
dec_targ	57.195417	Observer's specified target Dec [deg]
ra_nom	283.00176618227	Nominal RA [deg]
dec_nom	57.228620057808	Nominal Dec [deg]
roll_nom	121.0886375631	Nominal Roll [deg]
revision	2	Processing version of data
ontime	30162.999941975	Sum of GTIs [s]
livetime	29768.898142055	Livetime [s]
ontime0	30162.999941975	Sum of GTIs [s]
ontime1	30159.858971745	Sum of GTIs [s]
ontime2	30156.718001455	Sum of GTIs [s]
ontime3	30162.999941975	Sum of GTIs [s]
ontime6	30156.718011409	Sum of GTIs [s]
l2events	106153	Number of level 2 events



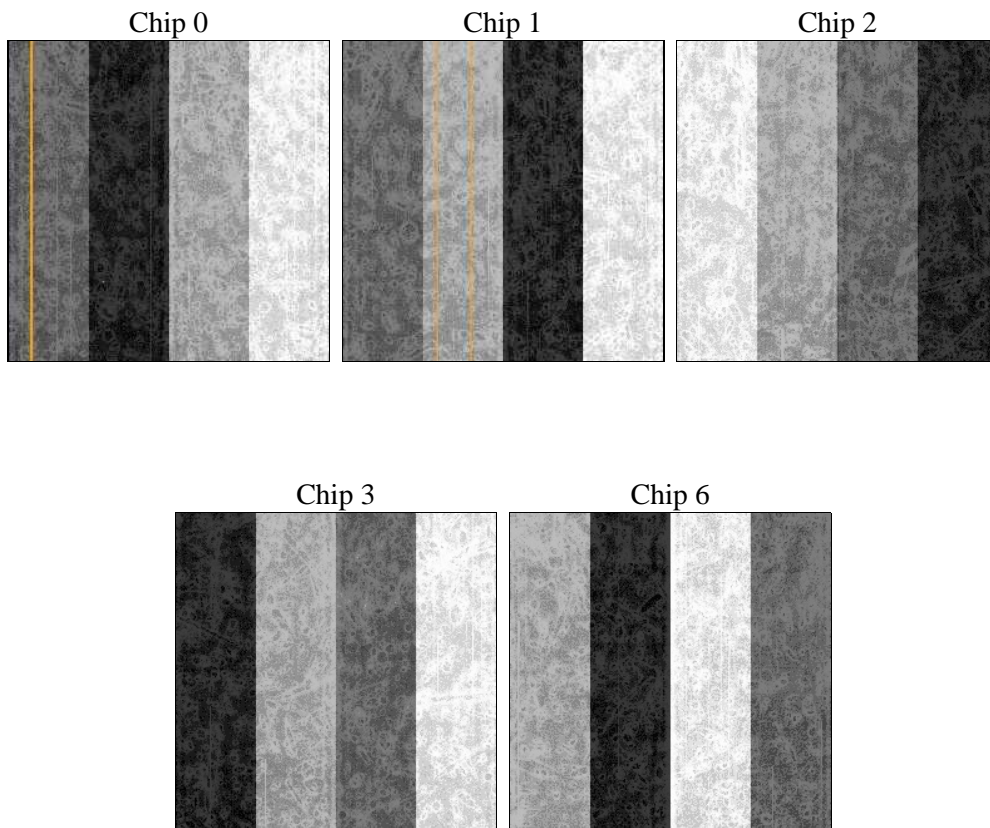
2 OBI

2.1 OBI

2.1.1 Images



2.1.2 Bias



2.1.3 Parameters

obi_num	0	Obi number	sched_exp_time	30000.000000	[s] Scheduled observation exposure time
ascdsver	8.4.3.1	Processing system revision	ontime	30162.999941975	Sum of GTIs [s]
caldsver	4.4.8	 	ontime0	30162.999941975	Sum of GTIs [s]
date	2012-03-31T11:31:23	Date and time of file creation	ontime1	30159.858971745	Sum of GTIs [s]
revision	2	Processing version of data	ontime2	30156.718001455	Sum of GTIs [s]
			ontime3	30162.999941975	Sum of GTIs [s]
			ontime6	30156.718011409	Sum of GTIs [s]
			l1events	1171502	Number of level 1 events

2.1.4 Events

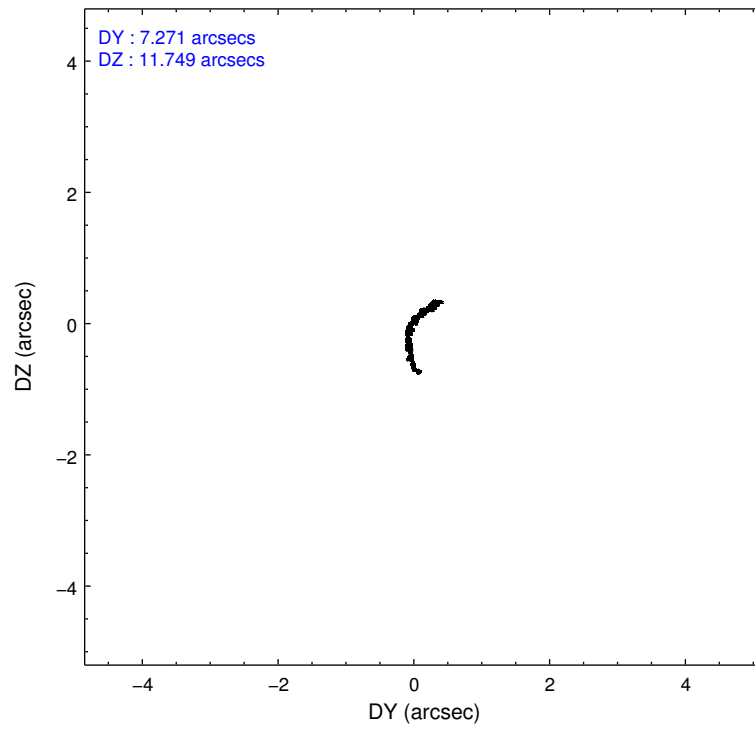
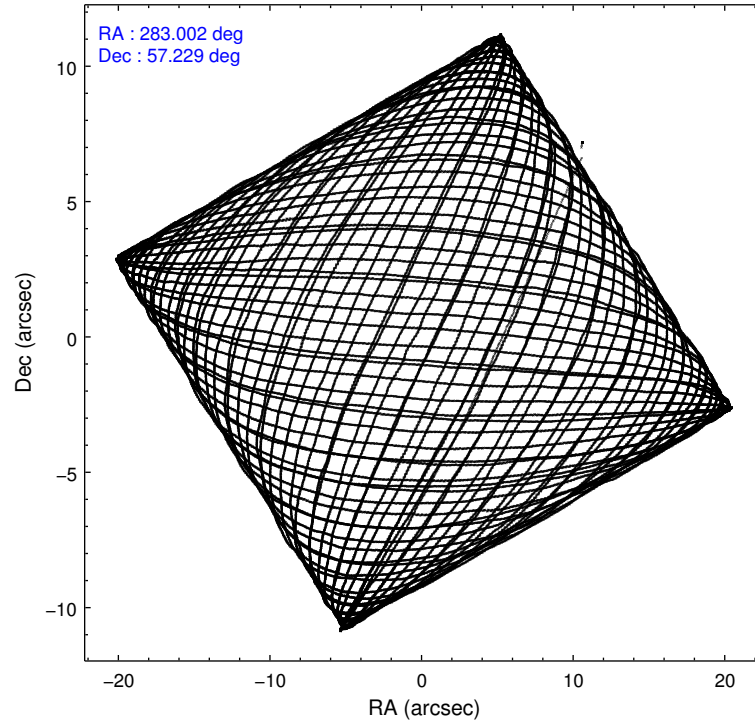
	ccd 0	ccd 1	ccd 2	ccd 3	ccd 6
level 1 events	220309	224161	249082	243356	234594
rejected events	197731	197899	226573	210957	211632
rejected %	89%	88%	90%	86%	90%

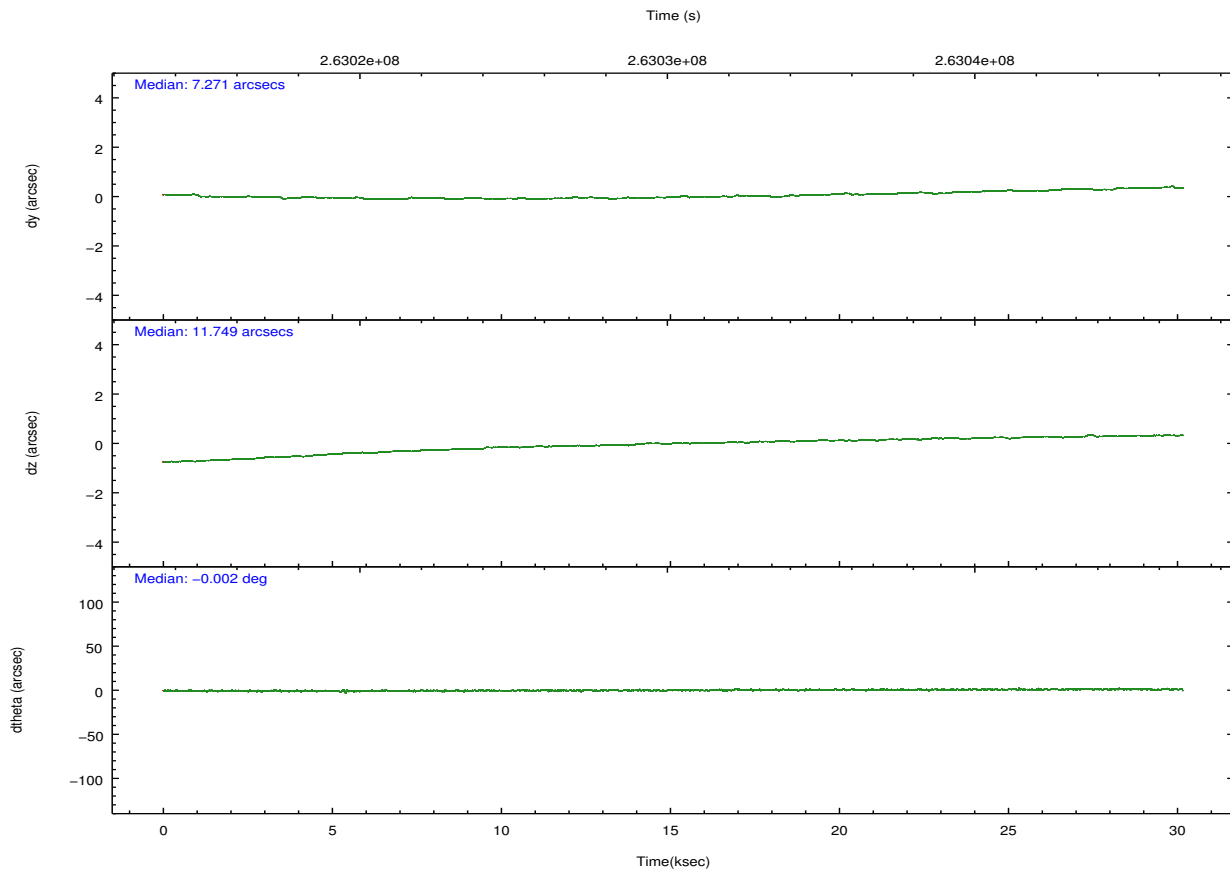
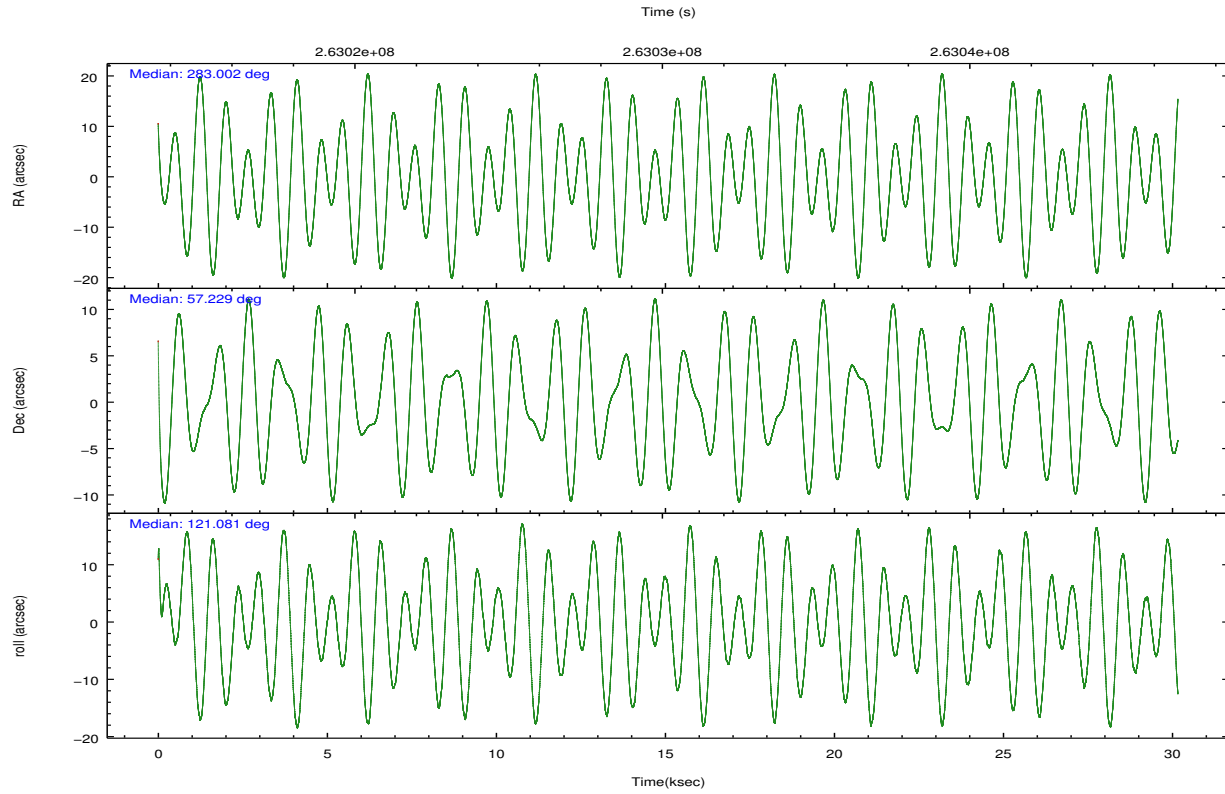
	ccd 0	ccd 1	ccd 2	ccd 3	ccd 6
grade 0 events	7942	9638	8304	16621	7889
	3%	4%	3%	6%	3%
grade 1 events	117	115	131	201	94
	0%	0%	0%	0%	0%
grade 2 events	5424	5842	5310	5694	4921
	2%	2%	2%	2%	2%
grade 3 events	2610	2916	2384	2815	2583
	1%	1%	0%	1%	1%
grade 4 events	2390	2754	2418	2781	2563
	1%	1%	0%	1%	1%
grade 5 events	7791	8764	7185	9184	8940
	3%	3%	2%	3%	3%
grade 6 events	4221	5115	4101	4504	5009
	1%	2%	1%	1%	2%
grade 7 events	189814	189017	219249	201556	202595
	86%	84%	88%	82%	86%

2.2 Compared Parameters

Parameter	Planned	Actual	Parameter	Planned	Actual
Instrument	ACIS	ACIS	Obspar format version number	7	7
Detector	ACIS-01236	ACIS-01236	Obspar file type	PREDICTED	ACTUAL
Grating	NONE	NONE	Obspar update status	NONE	UPDATED
Data mode	VFAINT	VFAINT	Number of optional ACIS chips dropped	0	0
Observation mode	POINTING	POINTING	On-chip summing requested	N	N
[deg] Pointing RA	283.046171	283.0017661822687	Subarray requested	NONE	NONE
[deg] Pointing Dec	57.215476	57.22862005780832	Alternating exposures requested	N	N
[deg] Pointing Roll	120.842611	121.0886375630961	[s] Primary exposure time	0.000000	3.1
[mm] SIM focus pos	-0.782348	-0.7809083437167272			
[mm] SIM defocus	0	0.001439871863259334			
[mm] SIM translation stage pos	-226.192463	-226.185290213036			
[mm] SIM translation stage offset	-7.4	-7.407162789893647			
[s] Observation start time (MET)	263015265.184000	263014274.53151			
Observation start date	2006-05-03T03:46:40	2006-05-03T03:31:14			
[s] Observation end time (MET)	263045265.184000	263045957.28299			
Observation end date	2006-05-03T12:06:40	2006-05-03T12:19:17			
Read mode	TIMED	TIMED			

2.3 Aspect



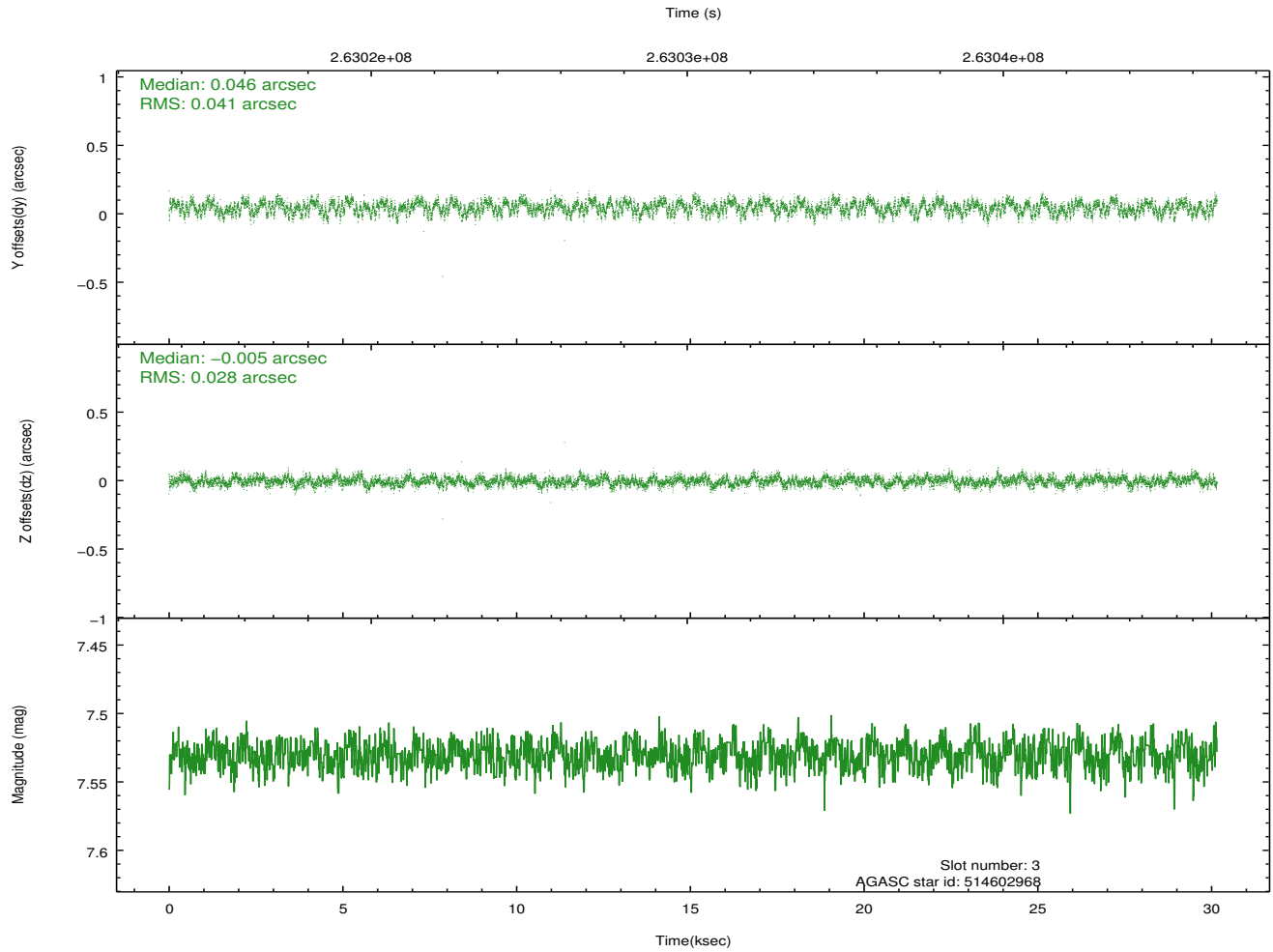
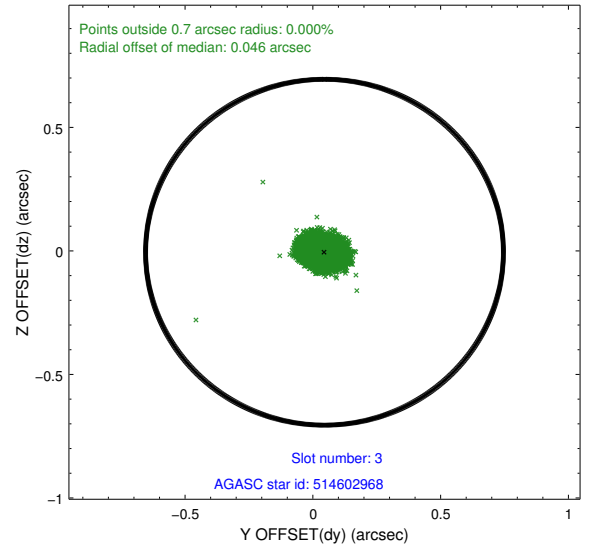
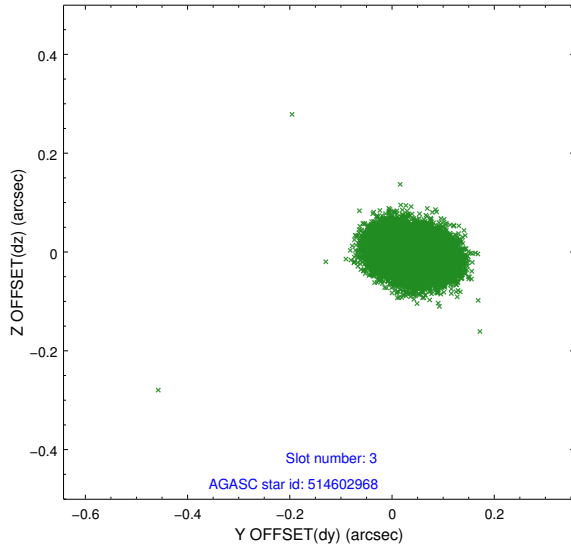


Slot Statistics

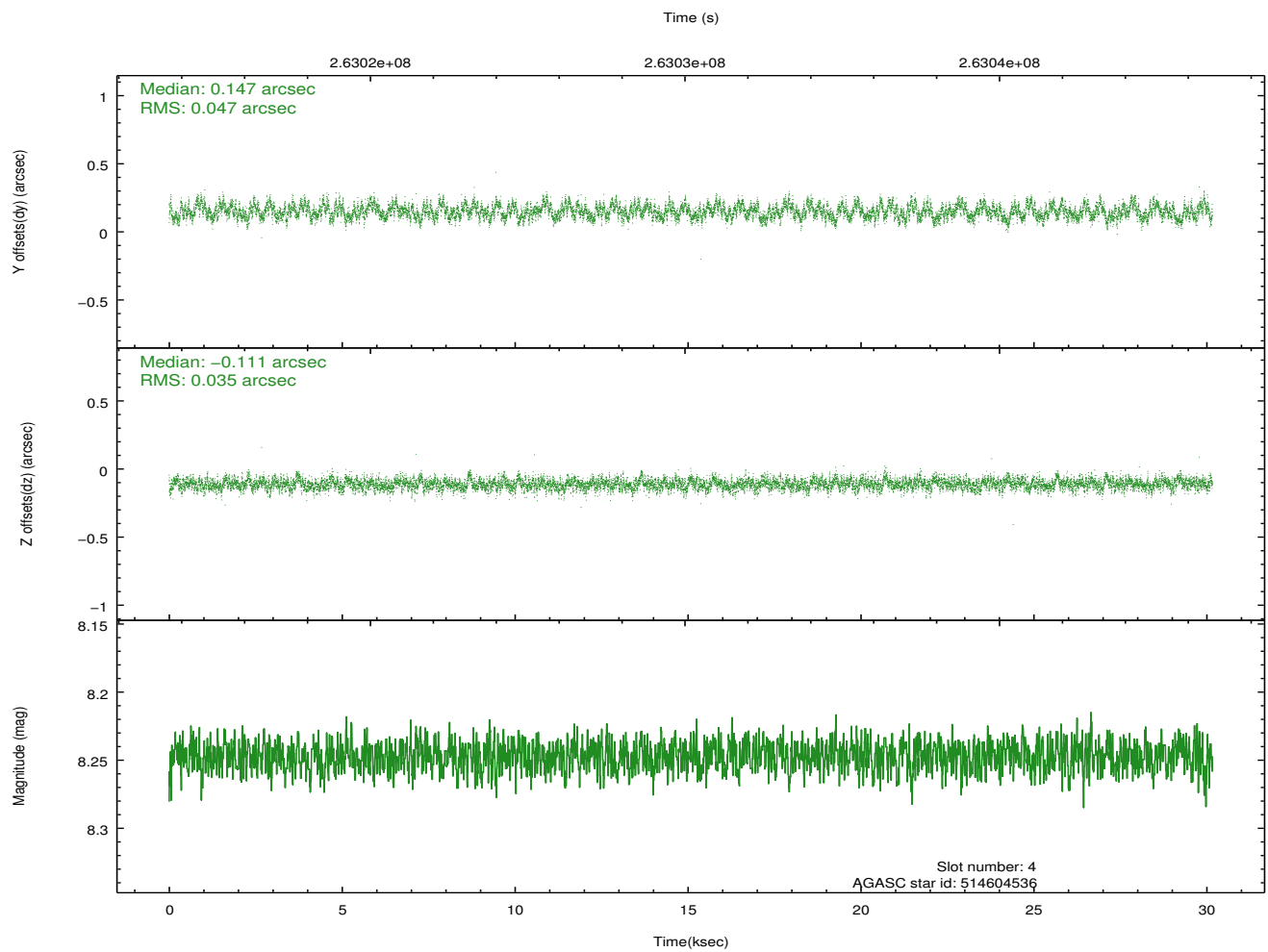
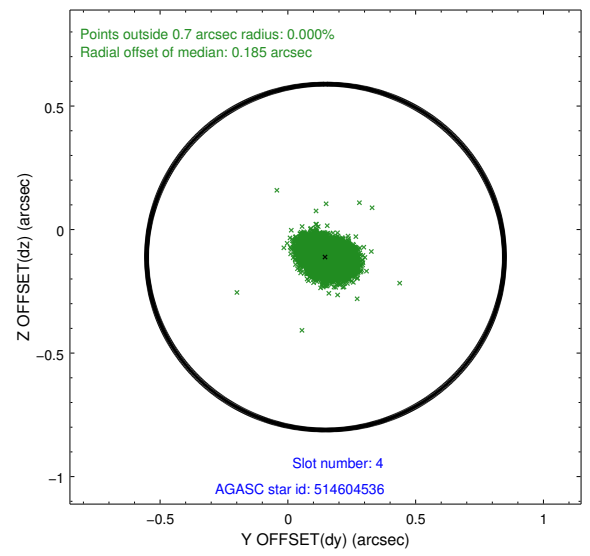
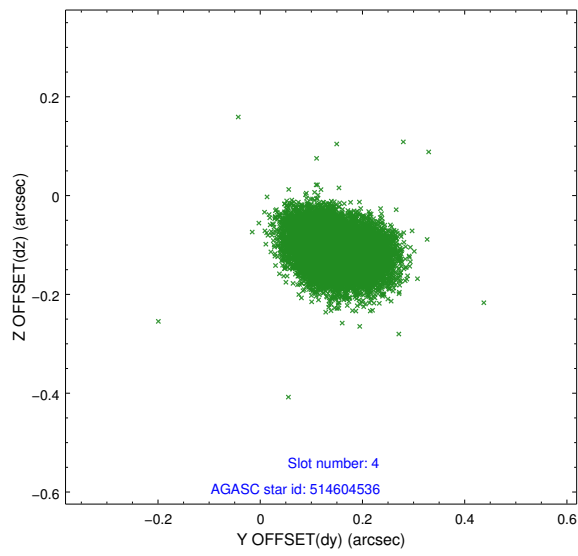
slot	status	id	mag	n_pts	med_dy	med_dz	dr1	dr2	ra	dec	mean_y	mean_z
0	FID	ACIS-I-1	7.23	7357	0.088	-0.072	0.013	0.021	0.000000	0.000000	932.29	-987.32
1	FID	ACIS-I-5	7.23	7358	-0.240	0.076	0.007	0.013	0.000000	0.000000	-1816.10	910.28
2	FID	ACIS-I-6	7.25	7357	0.061	0.067	0.010	0.018	0.000000	0.000000	397.74	1554.85
3	GUIDE	514602968	7.53	14714	0.046	-0.005	0.054	0.084	283.063002	56.492092	-2253.07	1306.38
4	GUIDE	514604536	8.25	14712	0.147	-0.111	0.063	0.101	282.624307	56.606542	-1451.70	1840.29
5	GUIDE	514604776	6.95	14716	-0.206	-0.148	0.059	0.094	281.999423	57.528470	2017.92	1151.51
6	GUIDE	514724640	8.27	14714	-0.148	0.186	0.059	0.096	283.972329	57.643592	419.25	-2327.75
7	GUIDE	514726000	9.34	14699	0.159	0.079	0.088	0.144	283.588151	57.951225	1747.58	-2248.78

2.4 Star Slots

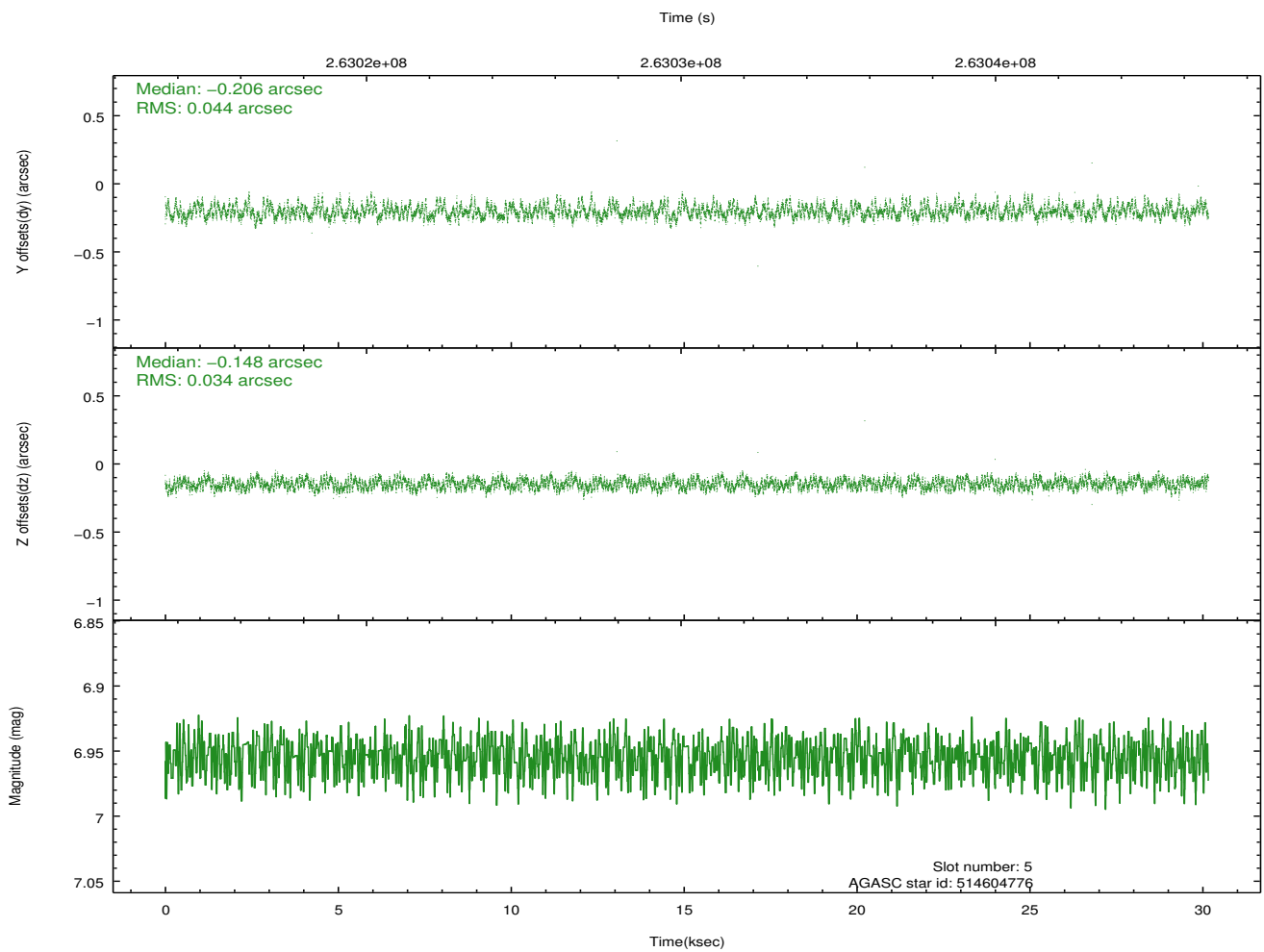
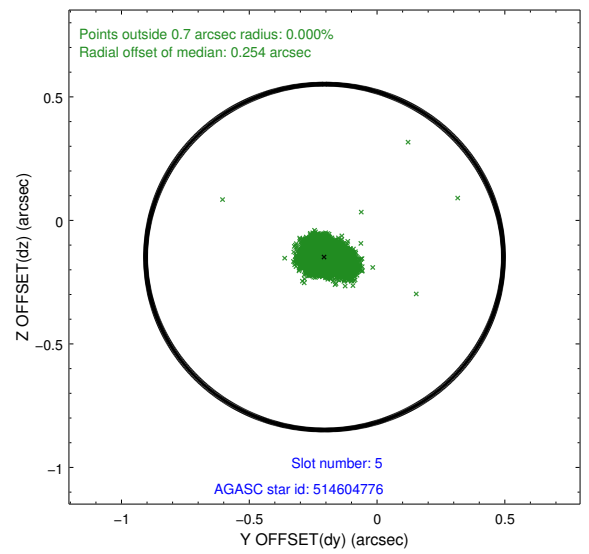
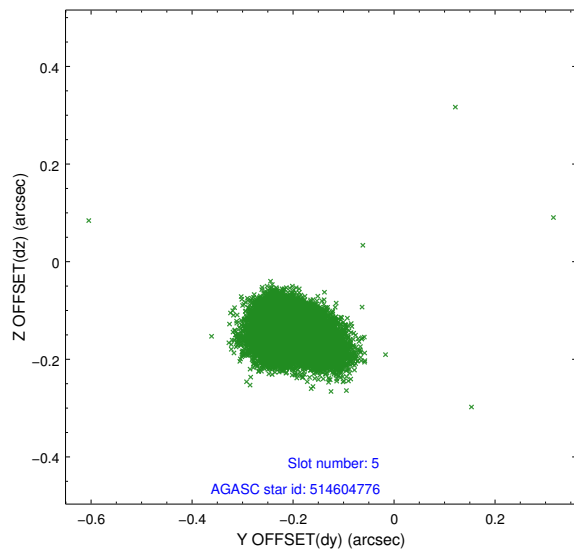
2.4.1 Slot 3



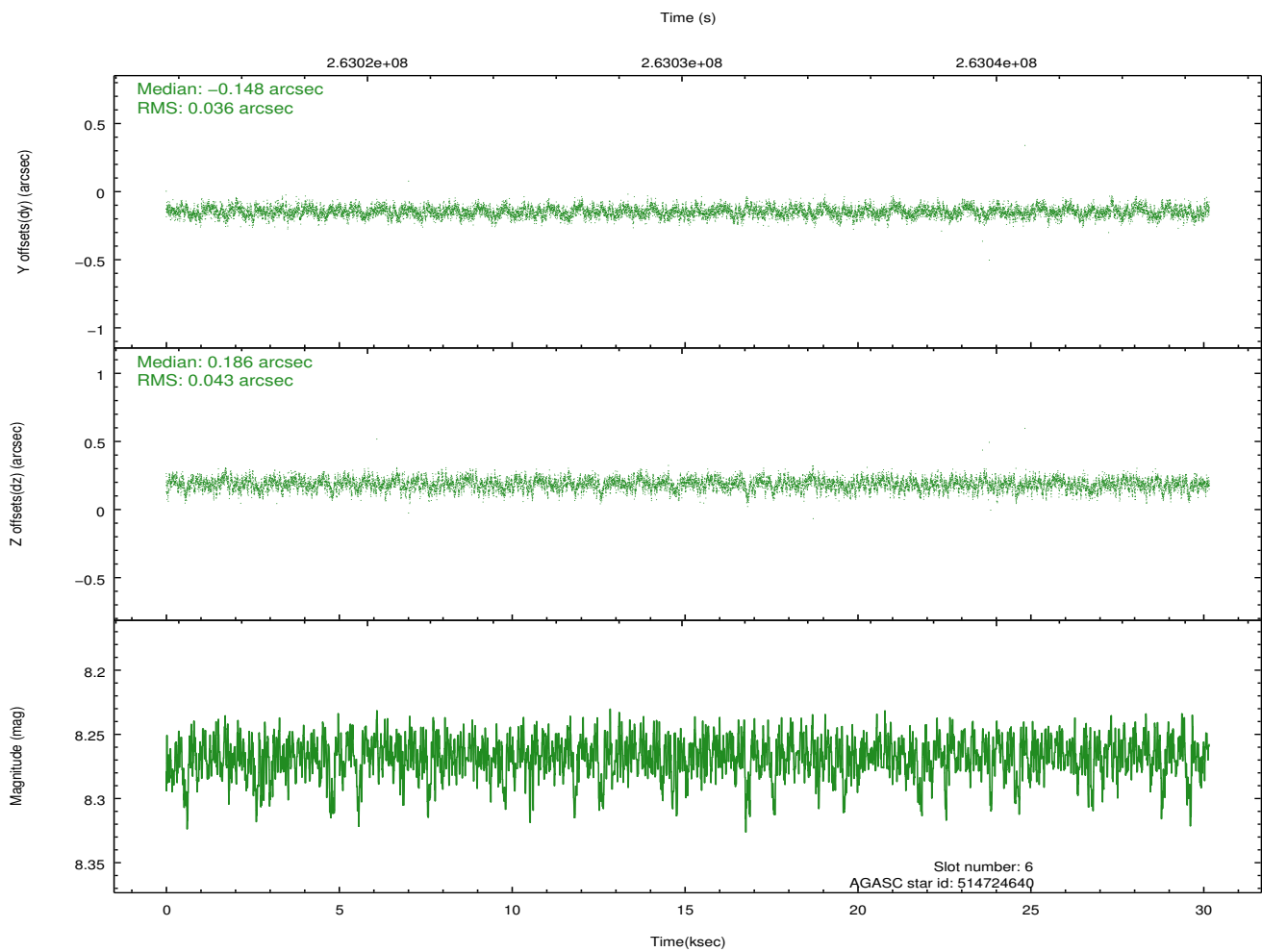
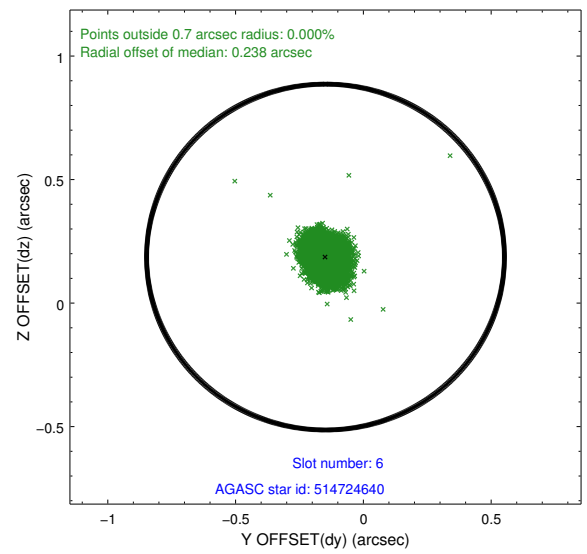
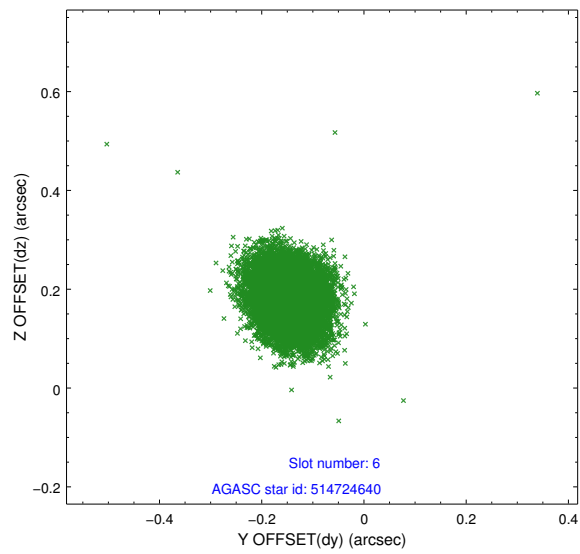
2.4.2 Slot 4



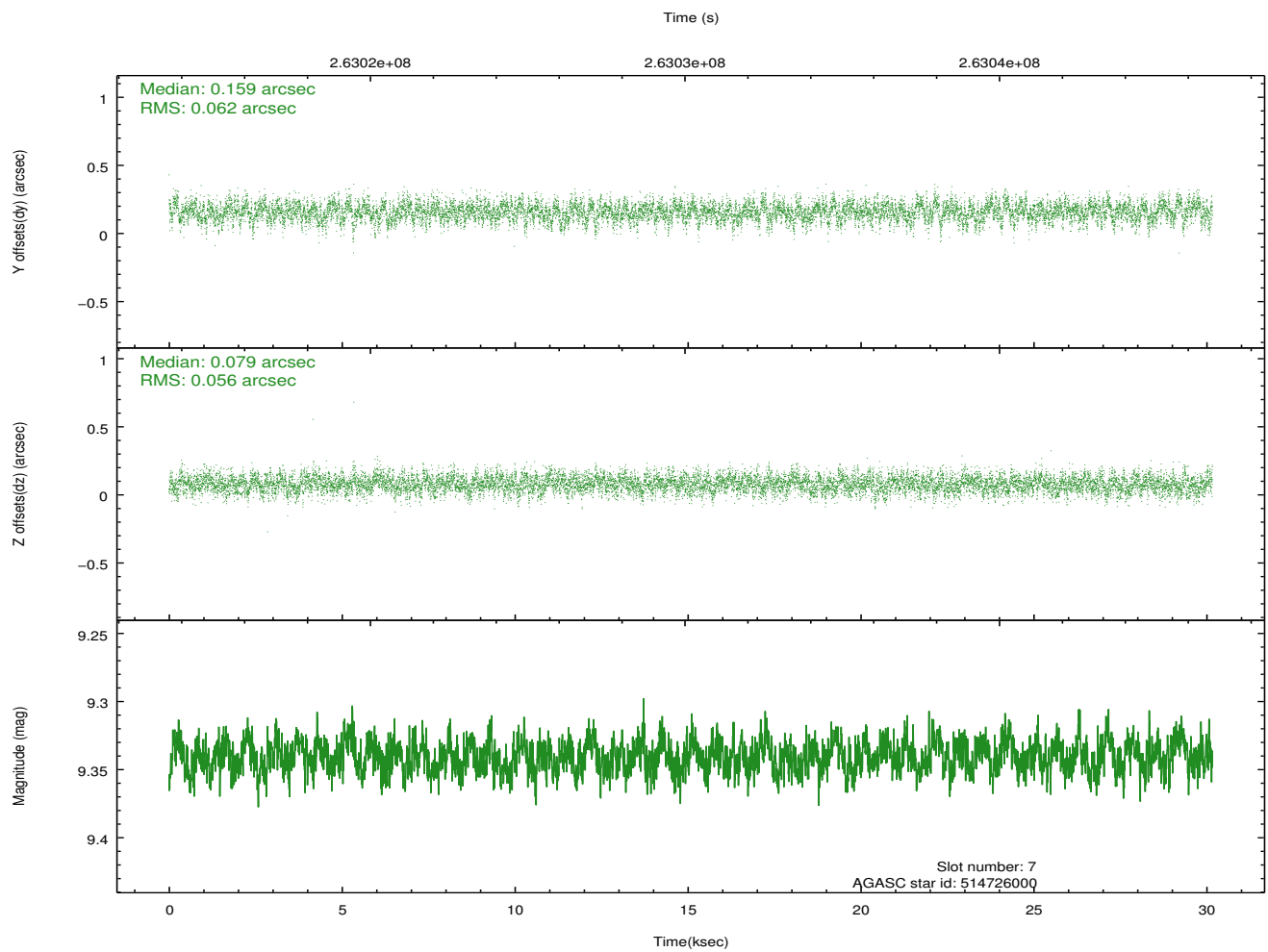
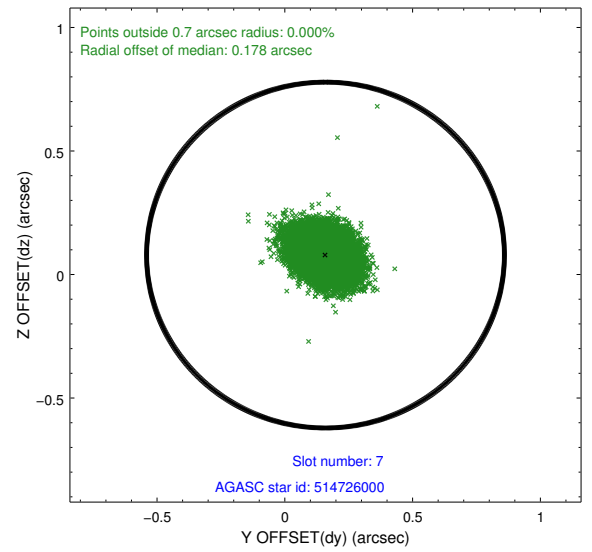
2.4.3 Slot 5



2.4.4 Slot 6

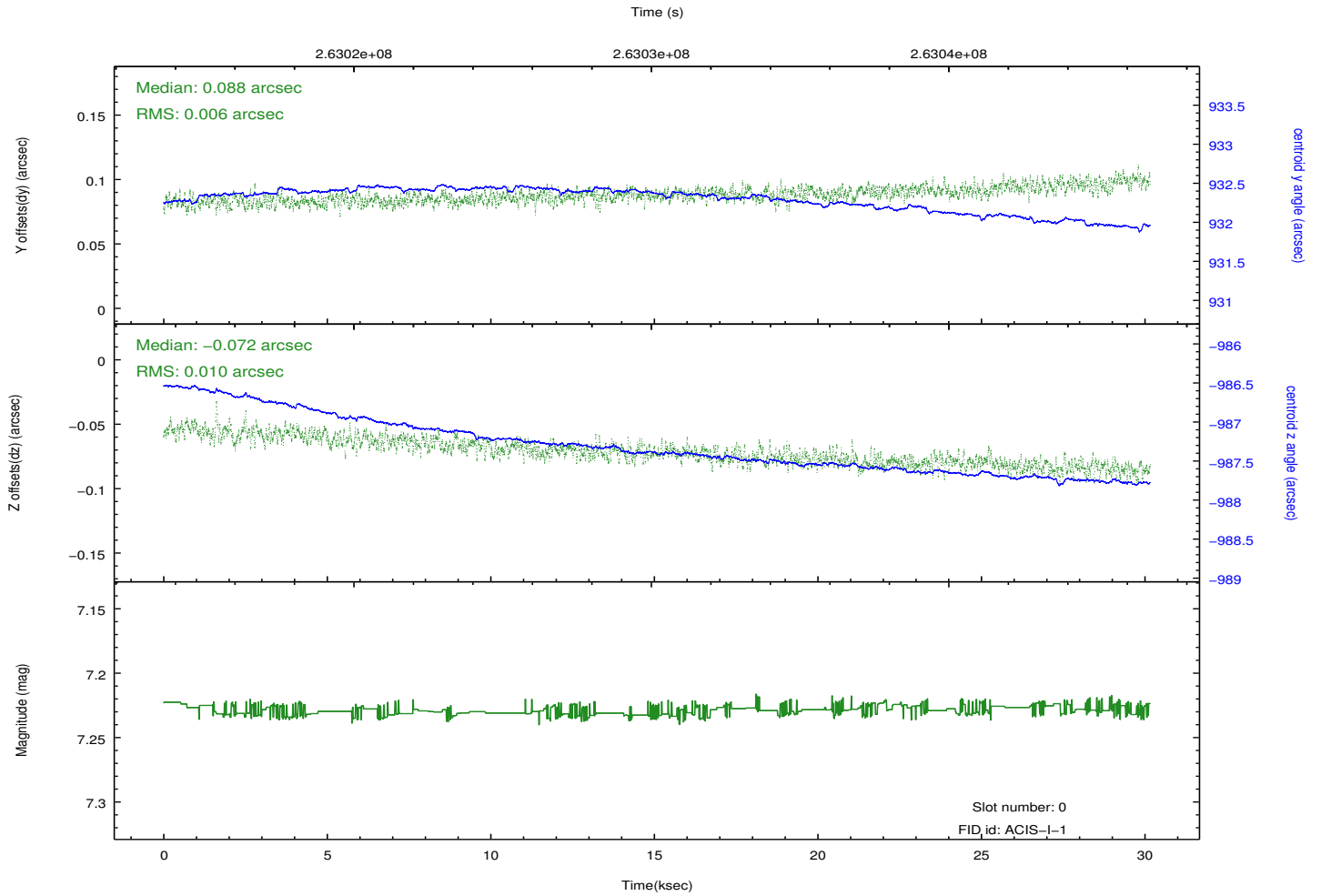
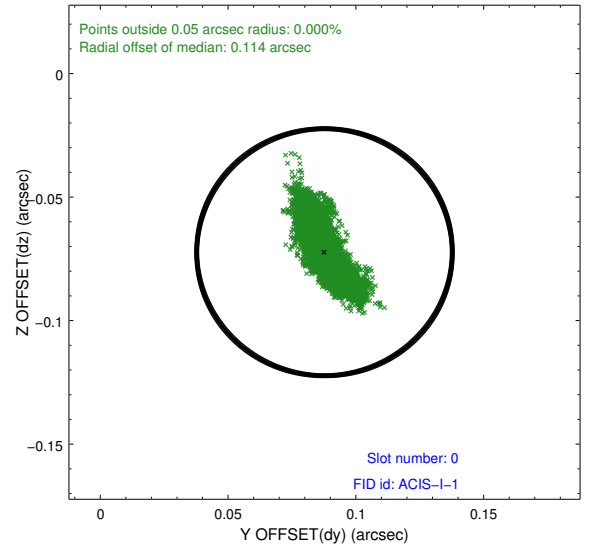
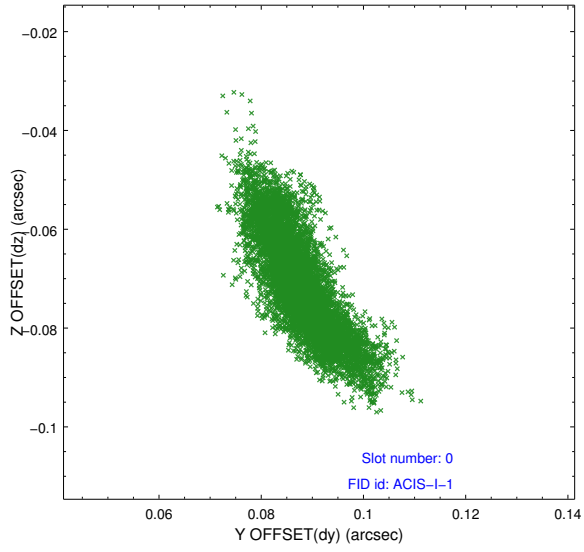


2.4.5 Slot 7

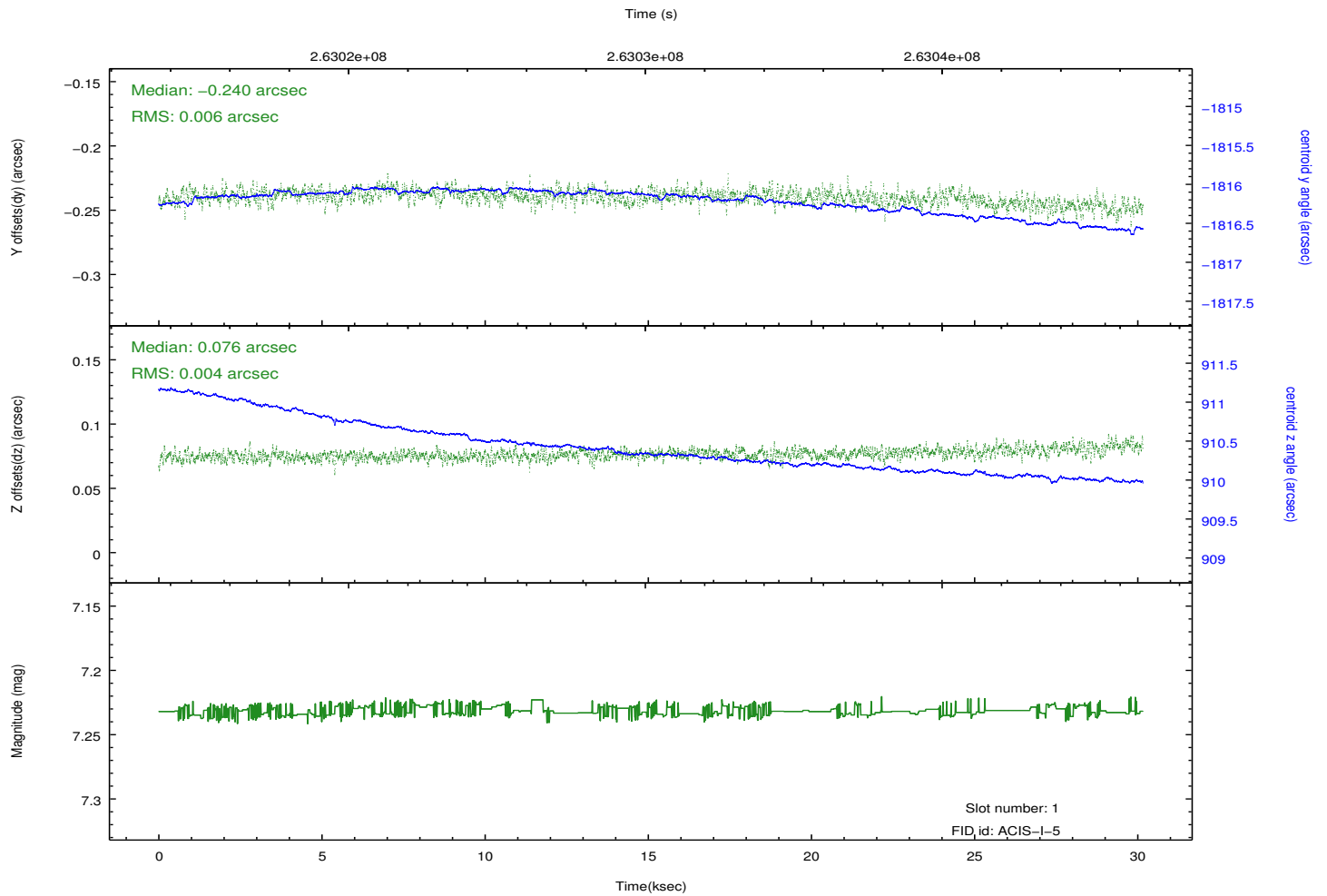
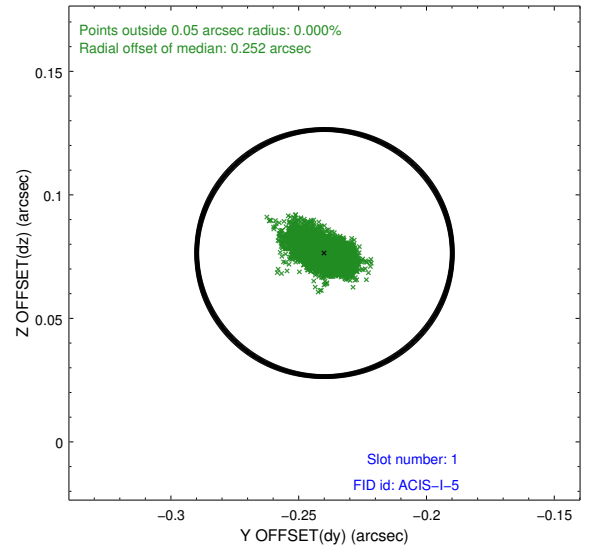
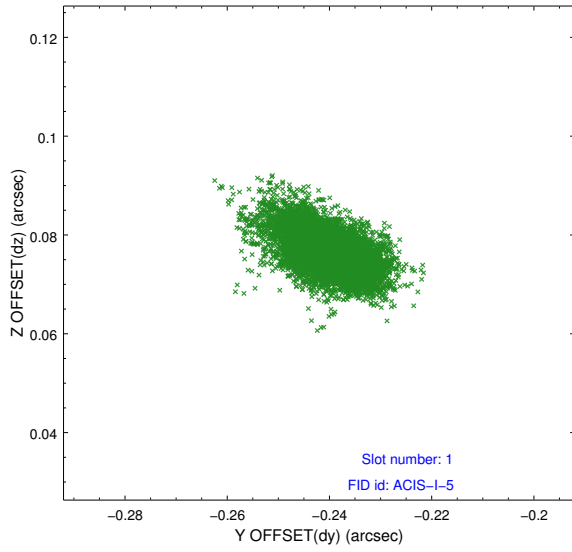


2.5 FID Slots

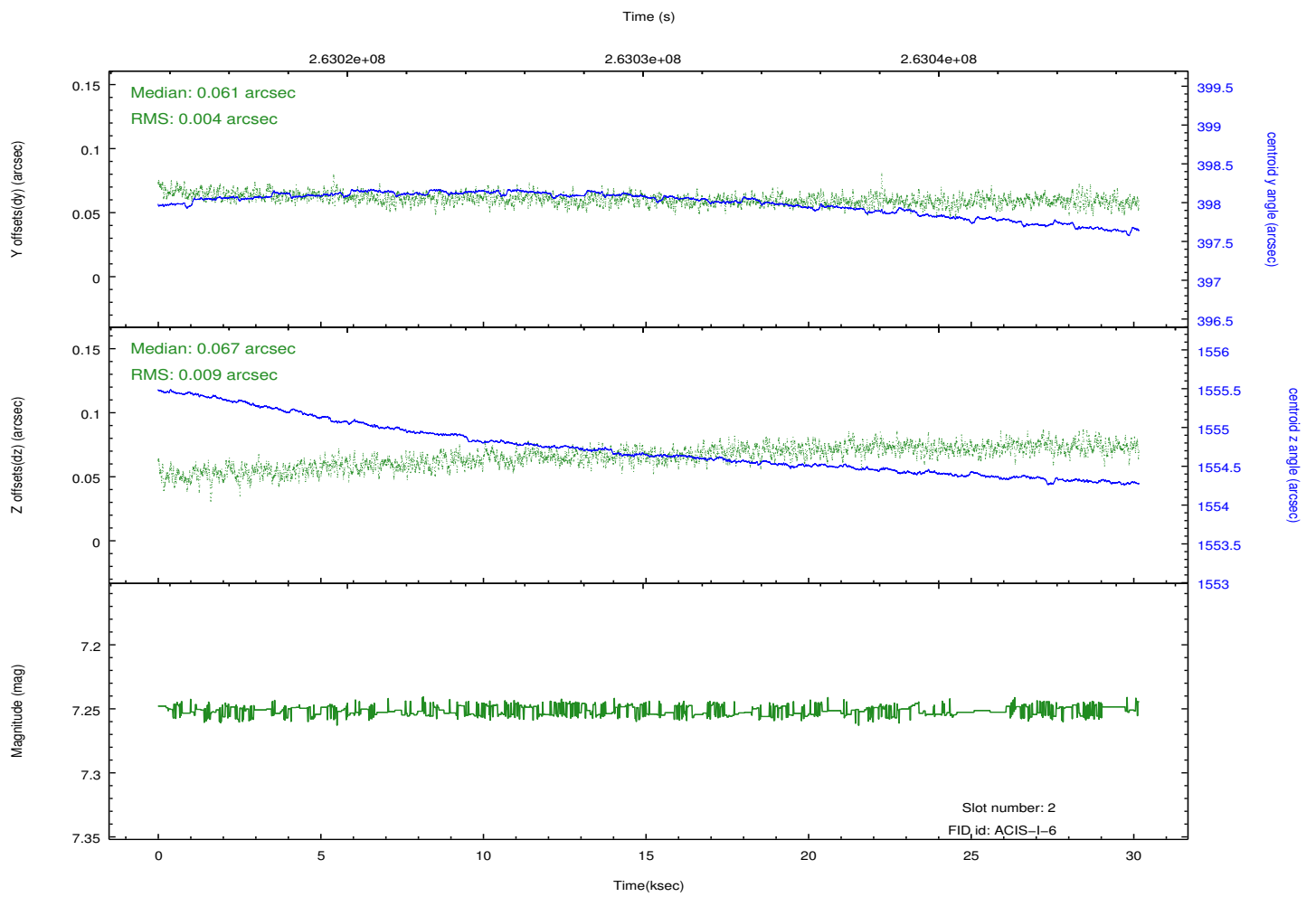
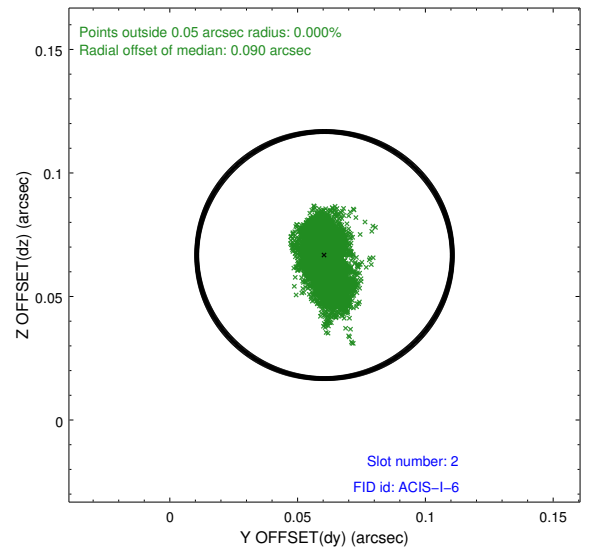
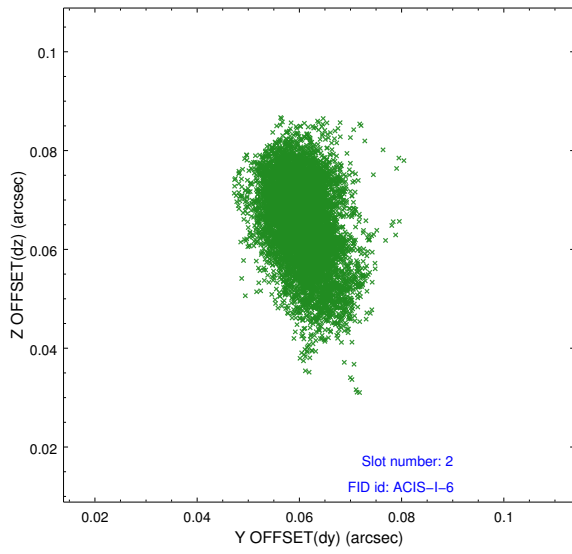
2.5.1 Slot 0



2.5.2 Slot 1



2.5.3 Slot 2



A Summary

A.1 Status

V&V Scientist	Jen Lauer
V&V Date (YYYY-MM-DD)	2012.04.02
V&V Edition	1
V&V Disposition and Status	OK
V&V Charge Time	30.1629999

A.2 Comments