

# V&V Reference Report

## L2 ASCDS Version : 8.5.1.1

Observation 5799 - L2 Version 3  
Chandra X-Ray Center

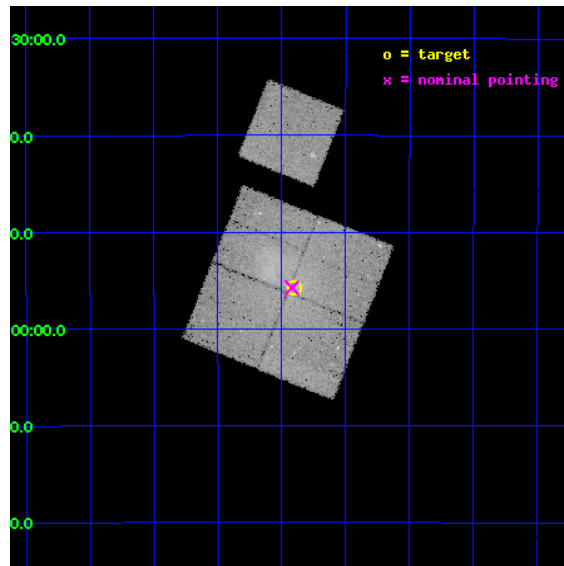
L2 Processing Date : Dec 30 2012

## Contents

<b>1</b>	<b>Front</b>	<b>2</b>
<b>2</b>	<b>OBI</b>	<b>3</b>
2.1	OBI . . . . .	3
2.1.1	Images . . . . .	3
2.1.2	Bias . . . . .	3
2.1.3	Parameters . . . . .	4
2.1.4	Events . . . . .	4
2.2	Compared Parameters . . . . .	5
2.3	Aspect . . . . .	6
2.4	Star Slots . . . . .	9
2.4.1	Slot 3 . . . . .	9
2.4.2	Slot 4 . . . . .	10
2.4.3	Slot 5 . . . . .	11
2.4.4	Slot 6 . . . . .	12
2.4.5	Slot 7 . . . . .	13
2.5	FID Slots . . . . .	14
2.5.1	Slot 0 . . . . .	14
2.5.2	Slot 1 . . . . .	15
2.5.3	Slot 2 . . . . .	16
<b>A</b>	<b>Summary</b>	<b>17</b>
A.1	Status . . . . .	17
A.2	Comments . . . . .	17

# 1 Front

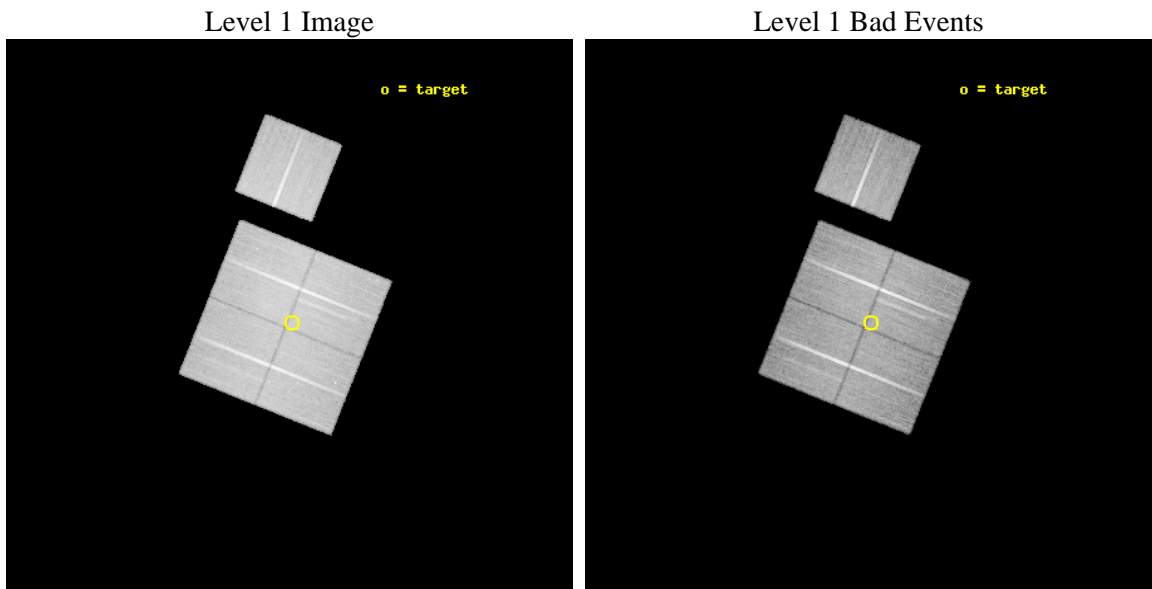
seq_num	800512	Sequence number
obs_id	5799	Observation id
title	X-ray Properties of a Mass-Selected Group Catalog	Proposal title
observer	Dr. Pasquale Mazzotta	Principal investigator
object	2PIGGz0.068 J0311.8-2655	Source name
dtycycle	0	&#160
cycle	P	events from which exps? Prim/Second/Both
ra_targ	47.85	Observer's specified target RA [deg]
dec_targ	-26.929167	Observer's specified target Dec [deg]
ra_nom	47.855207570715	Nominal RA [deg]
dec_nom	-26.929242211275	Nominal Dec [deg]
roll_nom	21.858600683356	Nominal Roll [deg]
revision	3	Processing version of data
ontime	40147.894941539	Sum of GTIs [s]
livetime	39623.333137677	Livetime [s]
ontime0	40157.317942262	Sum of GTIs [s]
ontime1	40157.317902446	Sum of GTIs [s]
ontime2	40154.176932067	Sum of GTIs [s]
ontime3	40147.894941539	Sum of GTIs [s]
ontime6	40157.317932248	Sum of GTIs [s]
l2events	128854	Number of level 2 events



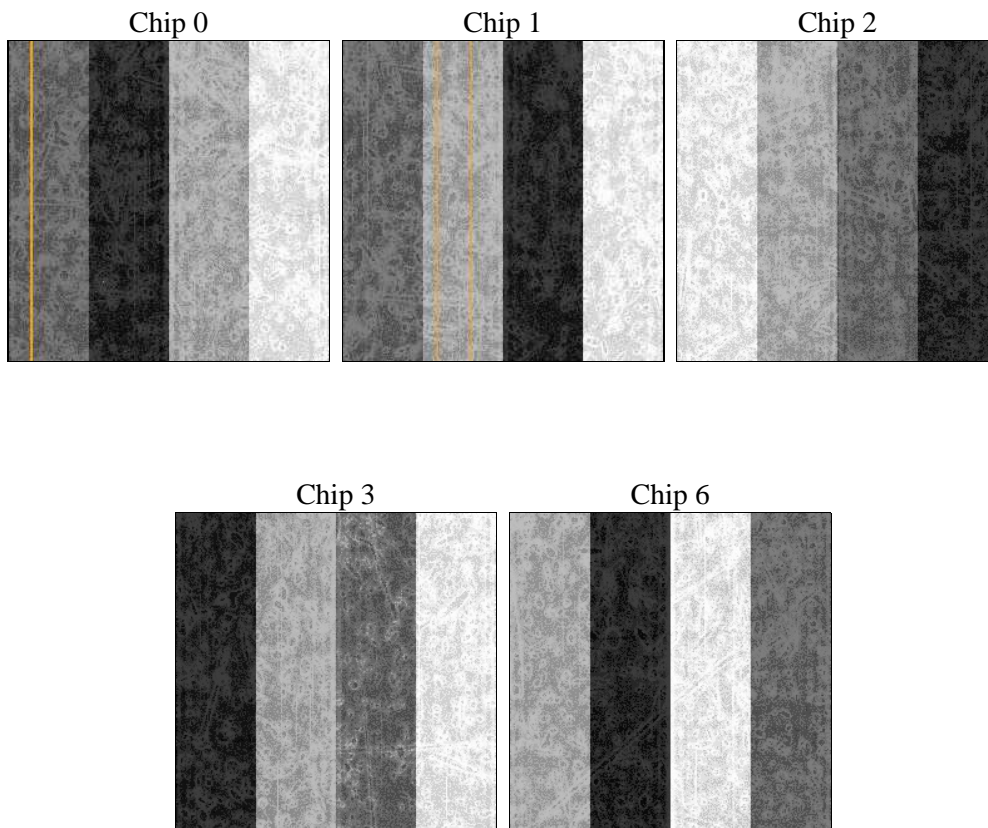
## 2 OBI

### 2.1 OBI

#### 2.1.1 Images



#### 2.1.2 Bias



### 2.1.3 Parameters

obi_num	1	Obi number	sched_exp_time	40000.000000	[s] Scheduled observation exposure time
ascdsver	8.5.1.1	Processing system revision	ontime	40147.894941539	Sum of GTIs [s]
caldbver	4.5.5	&#160	ontime0	40157.317942262	Sum of GTIs [s]
date	2012-12-31T00:32:14	Date and time of file creation	ontime1	40157.317902446	Sum of GTIs [s]
revision	3	Processing version of data	ontime2	40154.176932067	Sum of GTIs [s]
			ontime3	40147.894941539	Sum of GTIs [s]
			ontime6	40157.317932248	Sum of GTIs [s]
			l1events	1341819	Number of level 1 events

### 2.1.4 Events

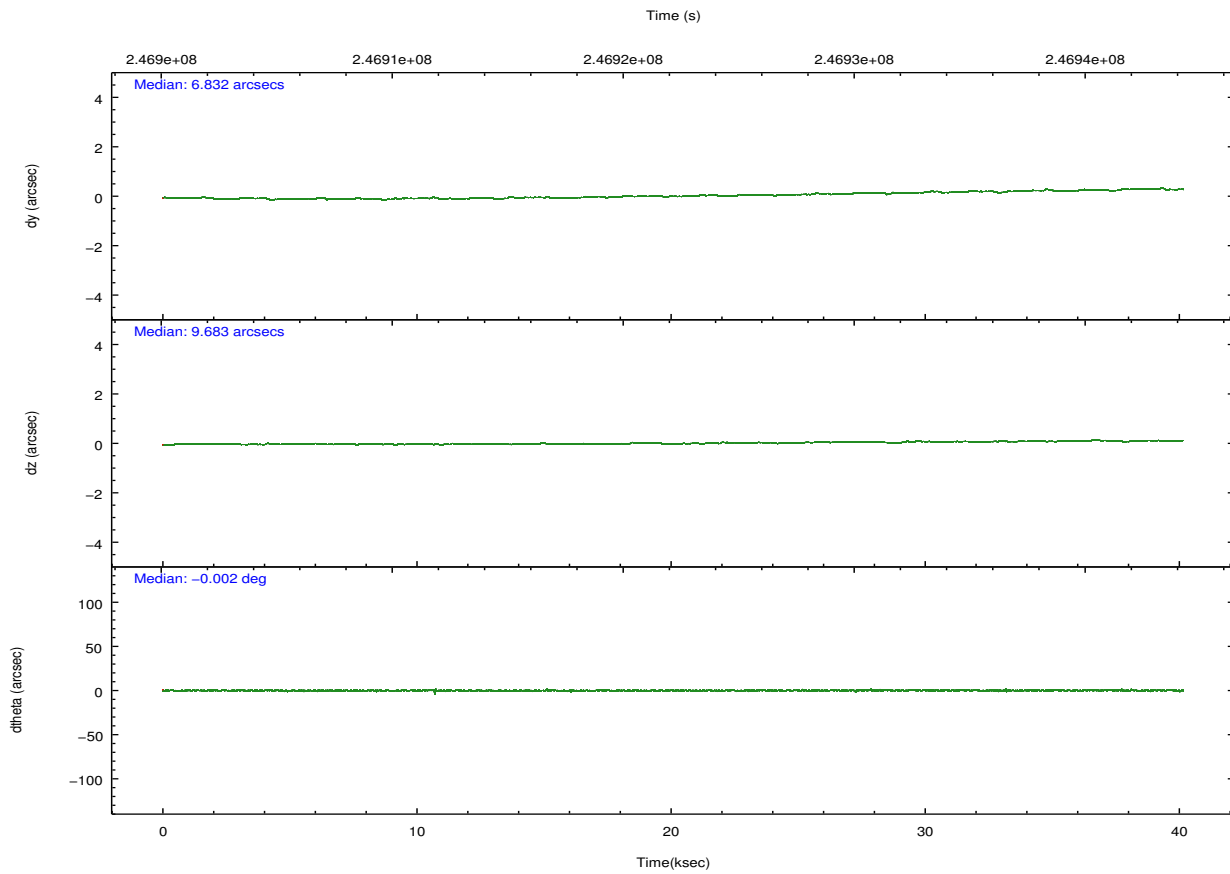
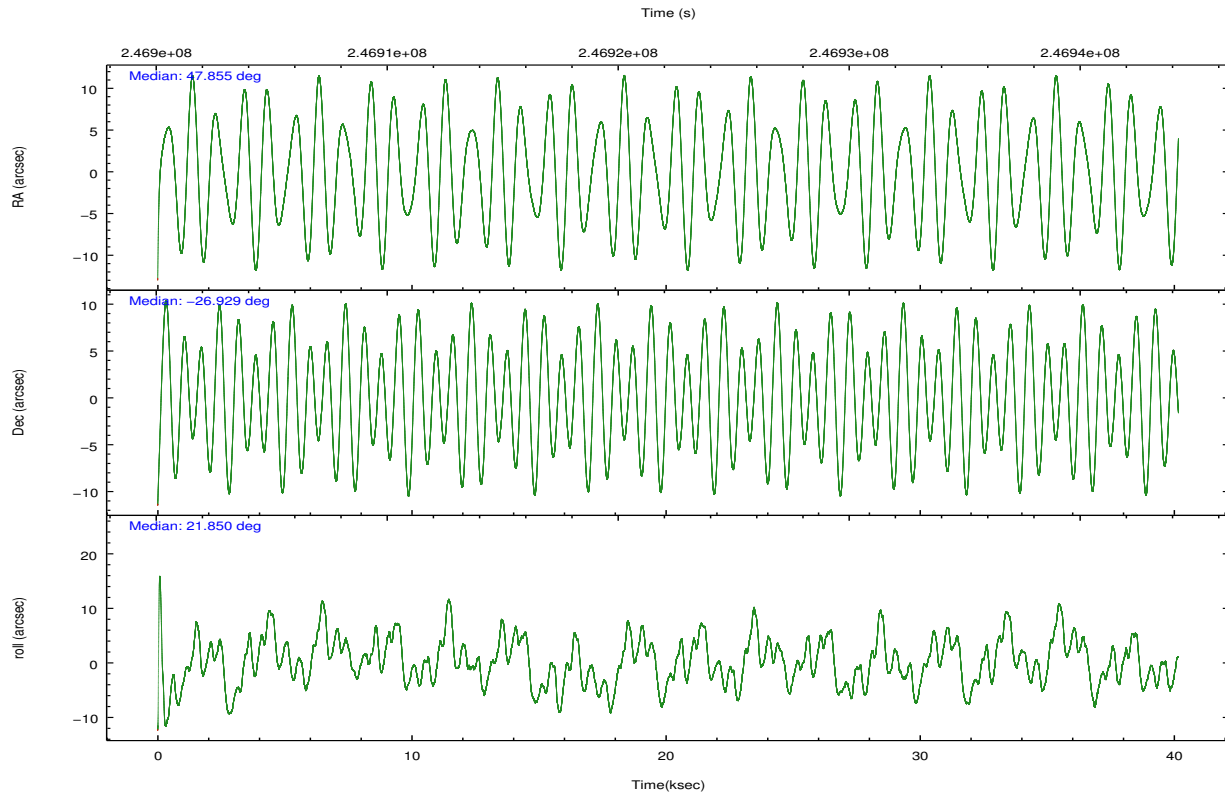
	ccd 0	ccd 1	ccd 2	ccd 3	ccd 6
level 1 events	256536	253692	292385	271883	267323
rejected events	227432	220759	256929	243130	240795
rejected %	88%	87%	87%	89%	90%

	ccd 0	ccd 1	ccd 2	ccd 3	ccd 6
grade 0 events	11680	13606	17687	12118	9156
	4%	5%	6%	4%	3%
grade 1 events	148	122	182	146	119
	0%	0%	0%	0%	0%
grade 2 events	6608	6859	6990	5827	5686
	2%	2%	2%	2%	2%
grade 3 events	3222	3438	3063	2964	3077
	1%	1%	1%	1%	1%
grade 4 events	2830	3336	3165	3025	2973
	1%	1%	1%	1%	1%
grade 5 events	9234	10175	8622	10713	10586
	3%	4%	2%	3%	3%
grade 6 events	4993	5978	4809	5048	5831
	1%	2%	1%	1%	2%
grade 7 events	217821	210178	247867	232042	229895
	84%	82%	84%	85%	85%

## 2.2 Compared Parameters

Parameter	Planned	Actual	Parameter	Planned	Actual
Instrument	ACIS	ACIS	Obspar format version number	7	7
Detector	ACIS-01236	ACIS-01236	Obspar file type	PREDICTED	ACTUAL
Grating	NONE	NONE	Obspar update status	NONE	UPDATED
Data mode	VFAINT	VFAINT	Number of optional ACIS chips dropped	0	0
Observation mode	POINTING	POINTING	On-chip summing requested	N	N
[deg] Pointing RA	47.836327	47.85520757071534	Subarray requested	NONE	NONE
[deg] Pointing Dec	-26.950856	-26.92924221127543	Alternating exposures requested	N	N
[deg] Pointing Roll	21.641370	21.85860068335635	[s] Primary exposure time	0.000000	3.1
[mm] SIM focus pos	-0.782348	-0.7809083437167272			
[mm] SIM defocus	0	0.001439871863259334			
[mm] SIM translation stage pos	-233.592463	-233.5874344608287			
[mm] SIM translation stage offset	0	-0.005018542100998502			
[s] Observation start time (MET)	246902243.184000	246901099.53401			
Observation start date	2005-10-28T15:56:19	2005-10-28T15:38:19			
[s] Observation end time (MET)	246942243.184000	246943766.69848			
Observation end date	2005-10-29T03:02:59	2005-10-29T03:29:26			
Read mode	TIMED	TIMED			

## 2.3 Aspect

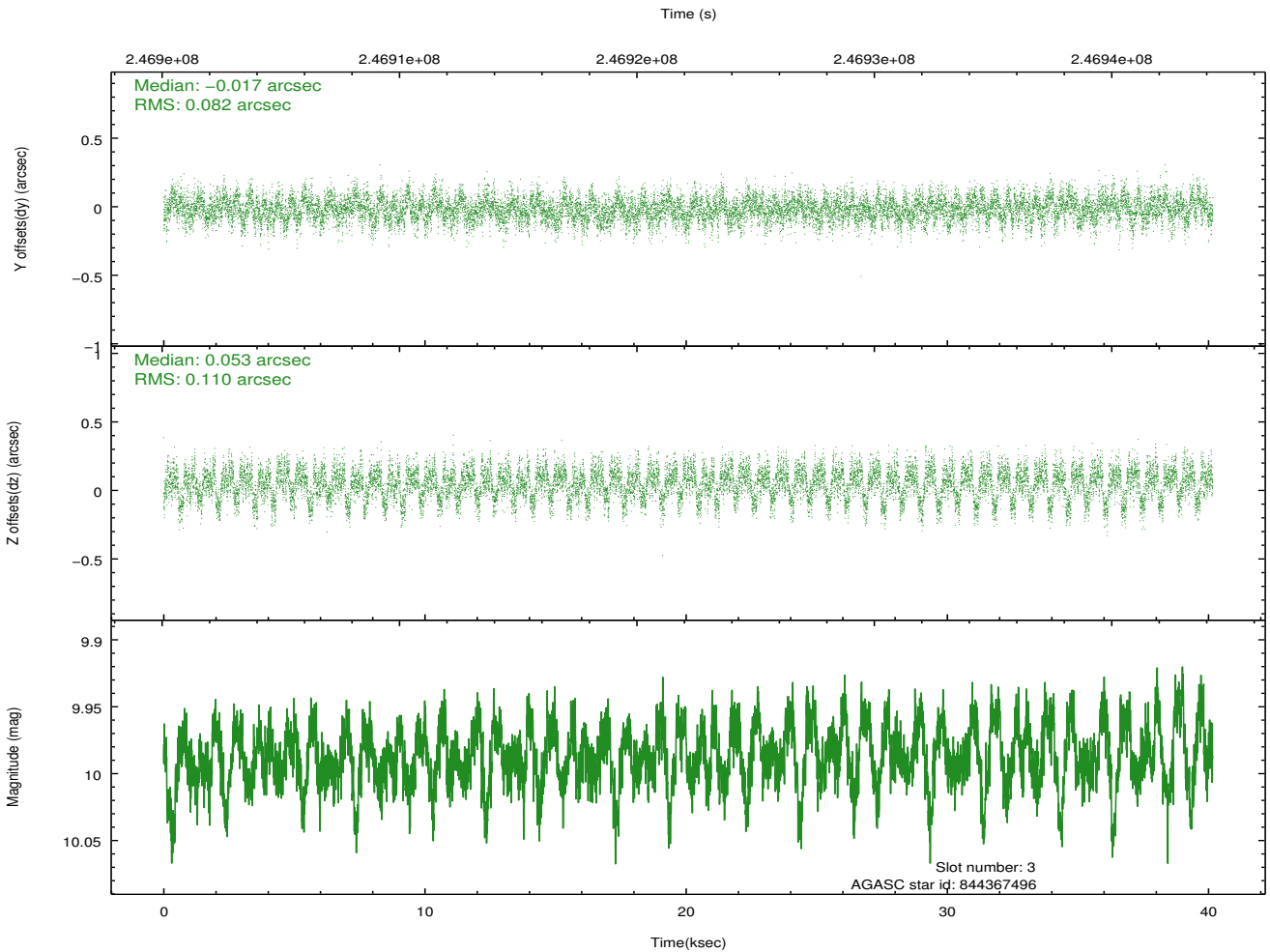
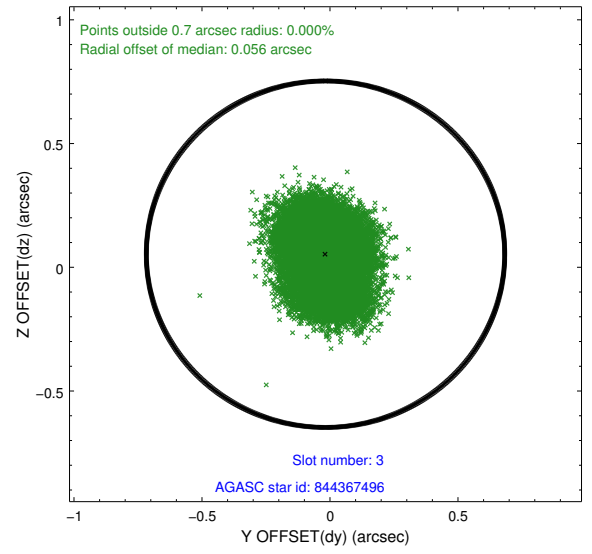
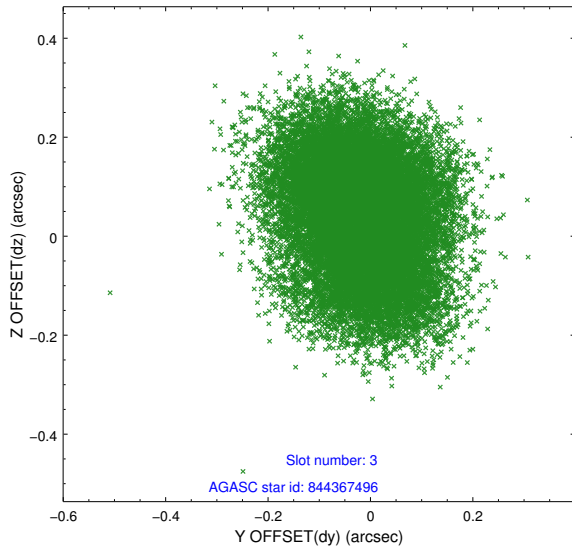


### Slot Statistics

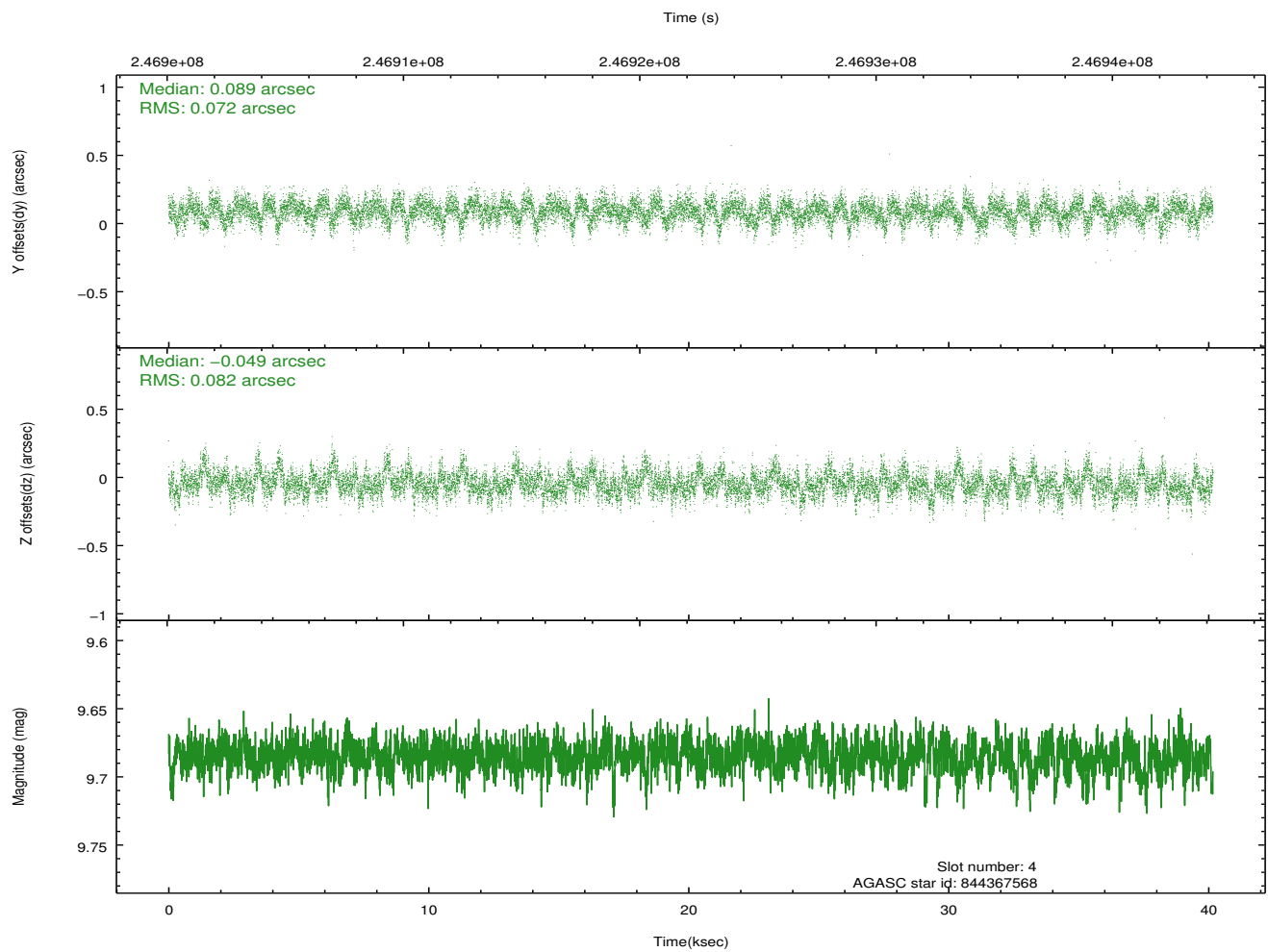
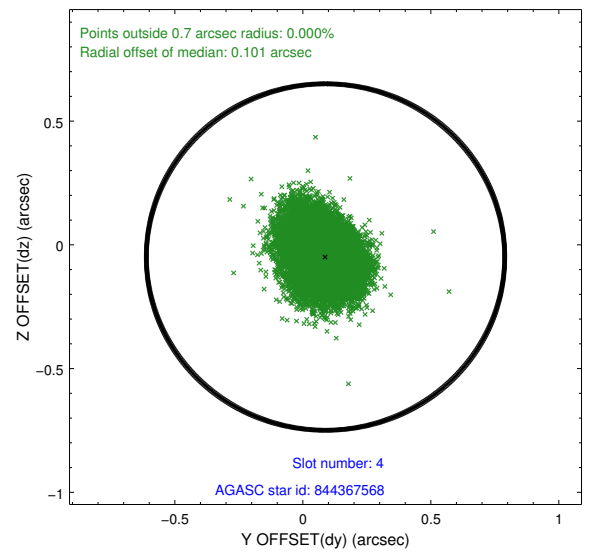
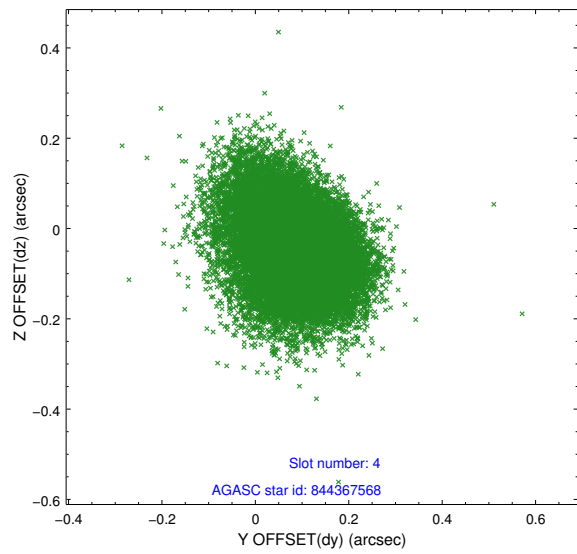
slot	status	id	mag	n_pts	med_dy	med_dz	dr1	dr2	ra	dec	mean_y	mean_z
0	FID	ACIS-I-1	7.25	9797	0.007	0.016	0.010	0.017	0.000000	0.000000	932.83	-833.14
1	FID	ACIS-I-5	7.23	9795	-0.159	0.028	0.010	0.017	0.000000	0.000000	-1815.45	1064.34
2	FID	ACIS-I-6	7.26	9797	0.060	0.027	0.009	0.014	0.000000	0.000000	398.39	1708.87
3	GUIDE	844367496	9.99	19570	-0.017	0.053	0.148	0.237	48.457244	-27.056190	1708.46	-1091.44
4	GUIDE	844367568	9.69	19569	0.089	-0.049	0.114	0.193	48.140300	-26.953489	903.22	-369.66
5	GUIDE	844374376	10.33	19445	-0.026	-0.012	0.194	0.317	48.127669	-26.234520	1825.21	2049.29
6	GUIDE	844762088	9.92	19580	-0.025	-0.004	0.140	0.221	47.754474	-27.567808	-1060.97	-1968.18
7	GUIDE	844762352	9.11	19584	-0.017	0.006	0.110	0.175	48.021704	-27.578048	-282.47	-2317.58

## 2.4 Star Slots

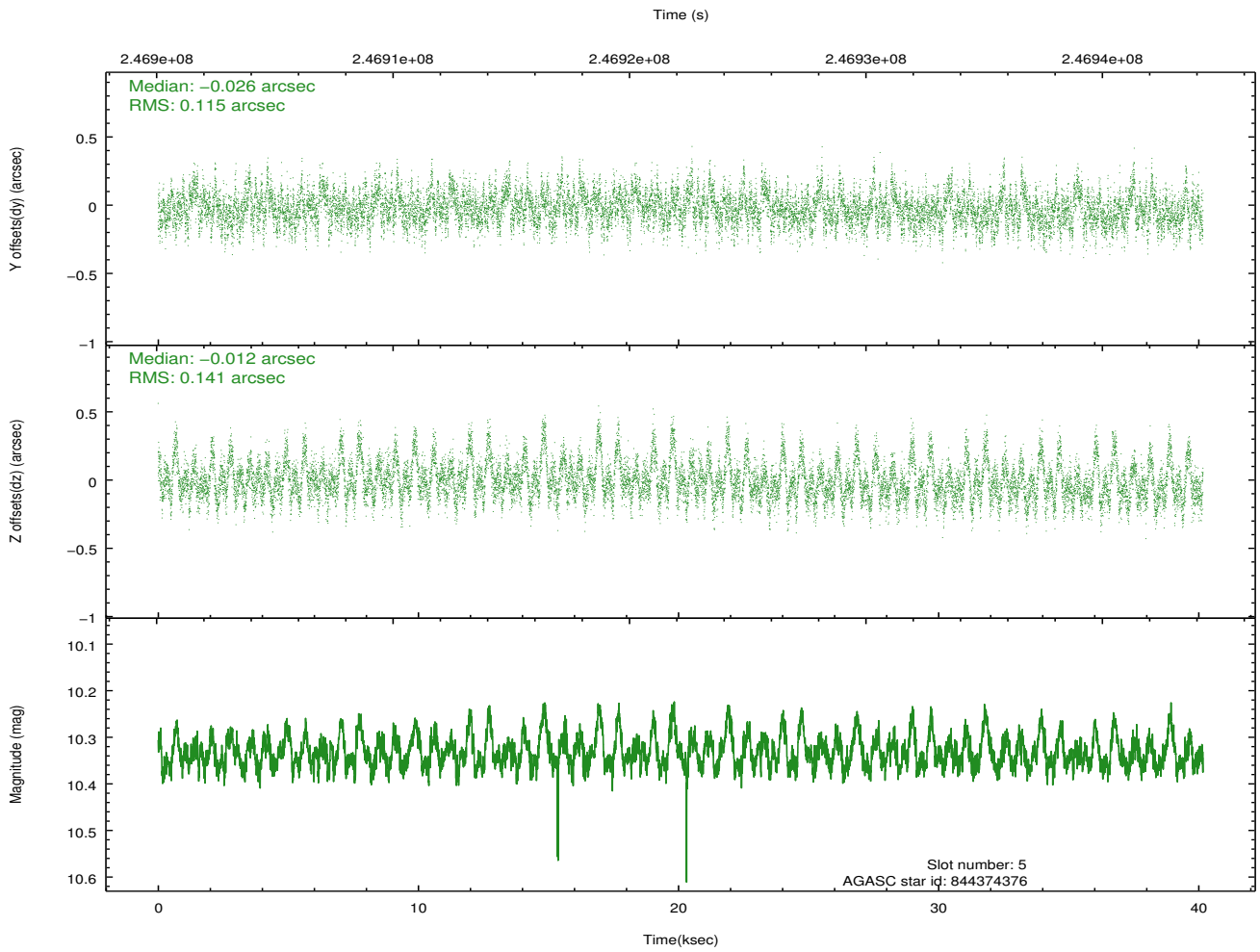
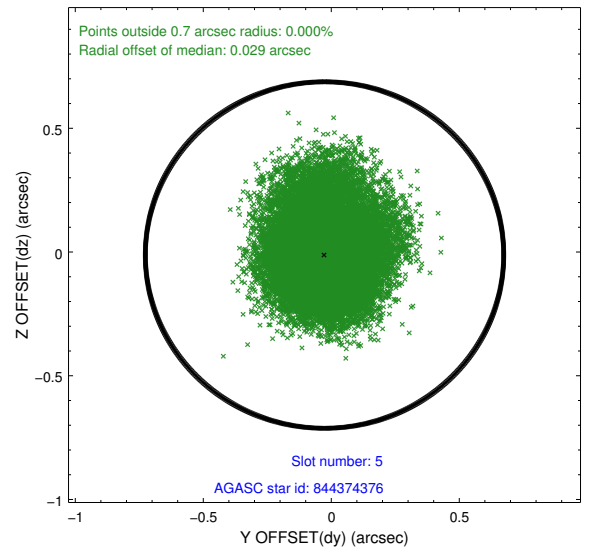
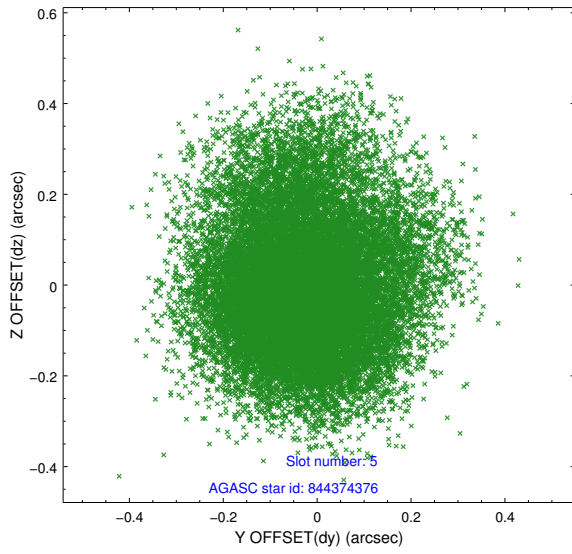
### 2.4.1 Slot 3



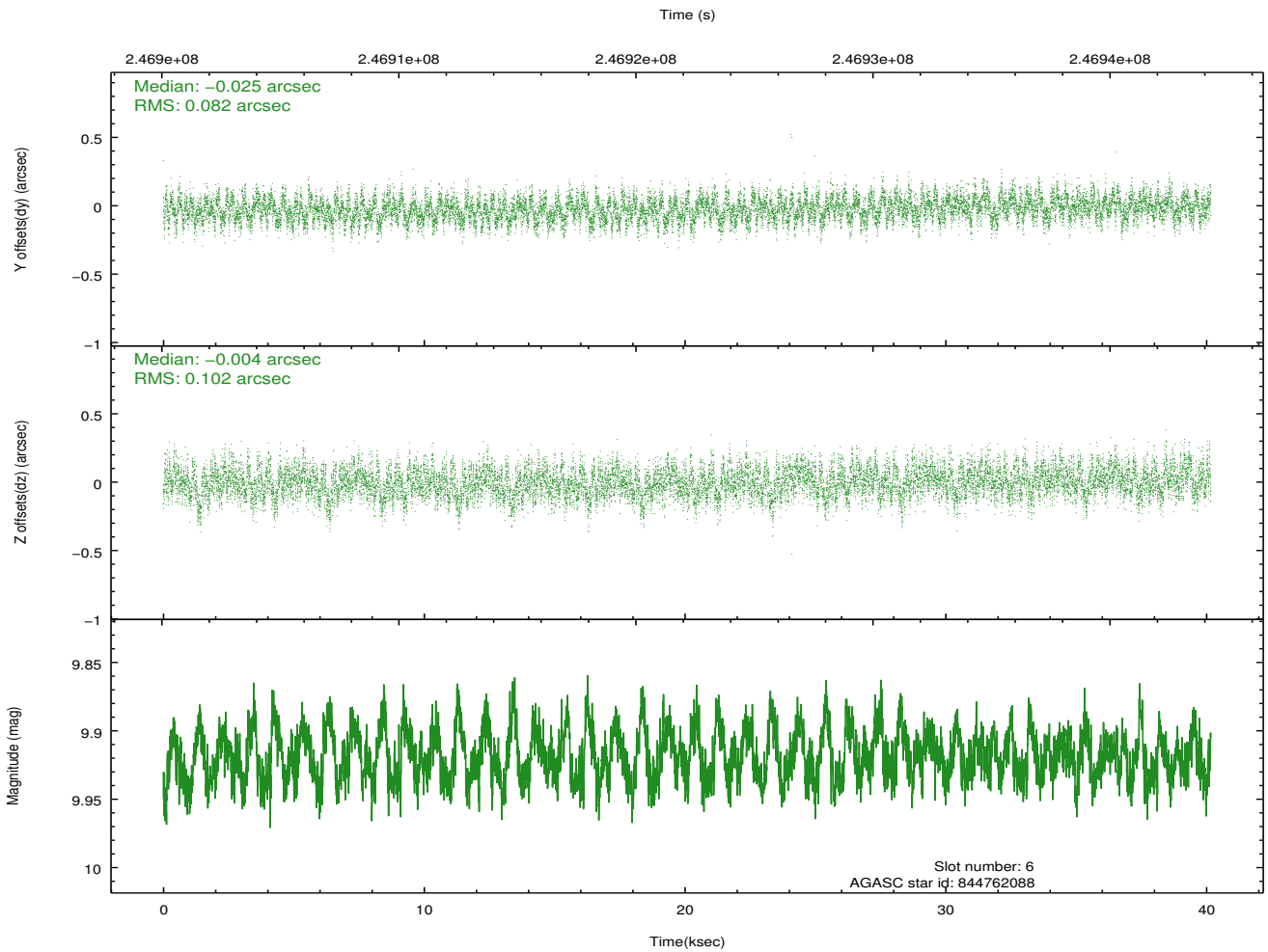
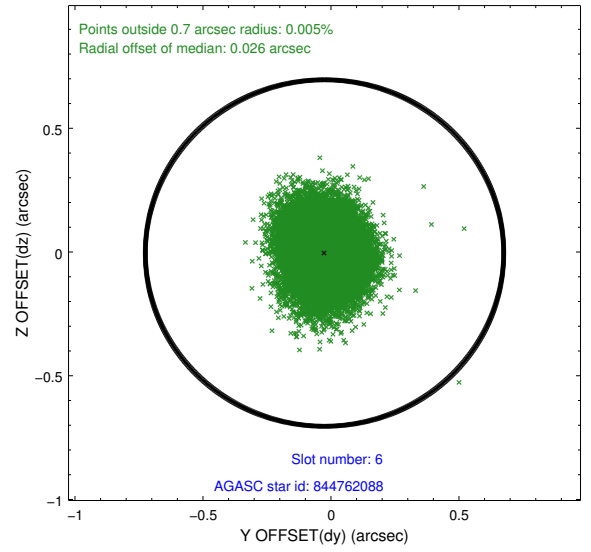
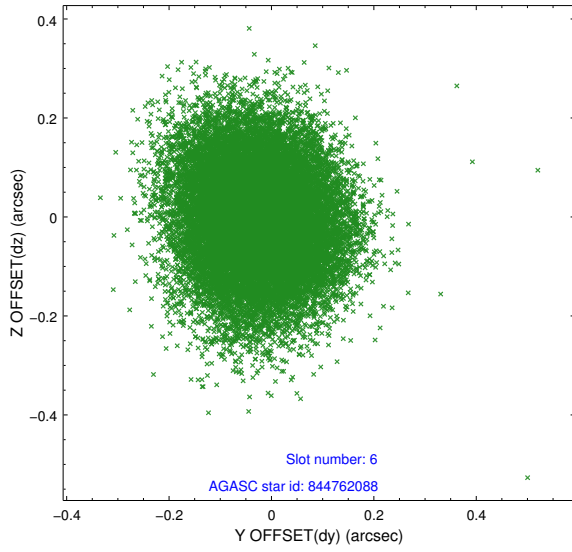
## 2.4.2 Slot 4



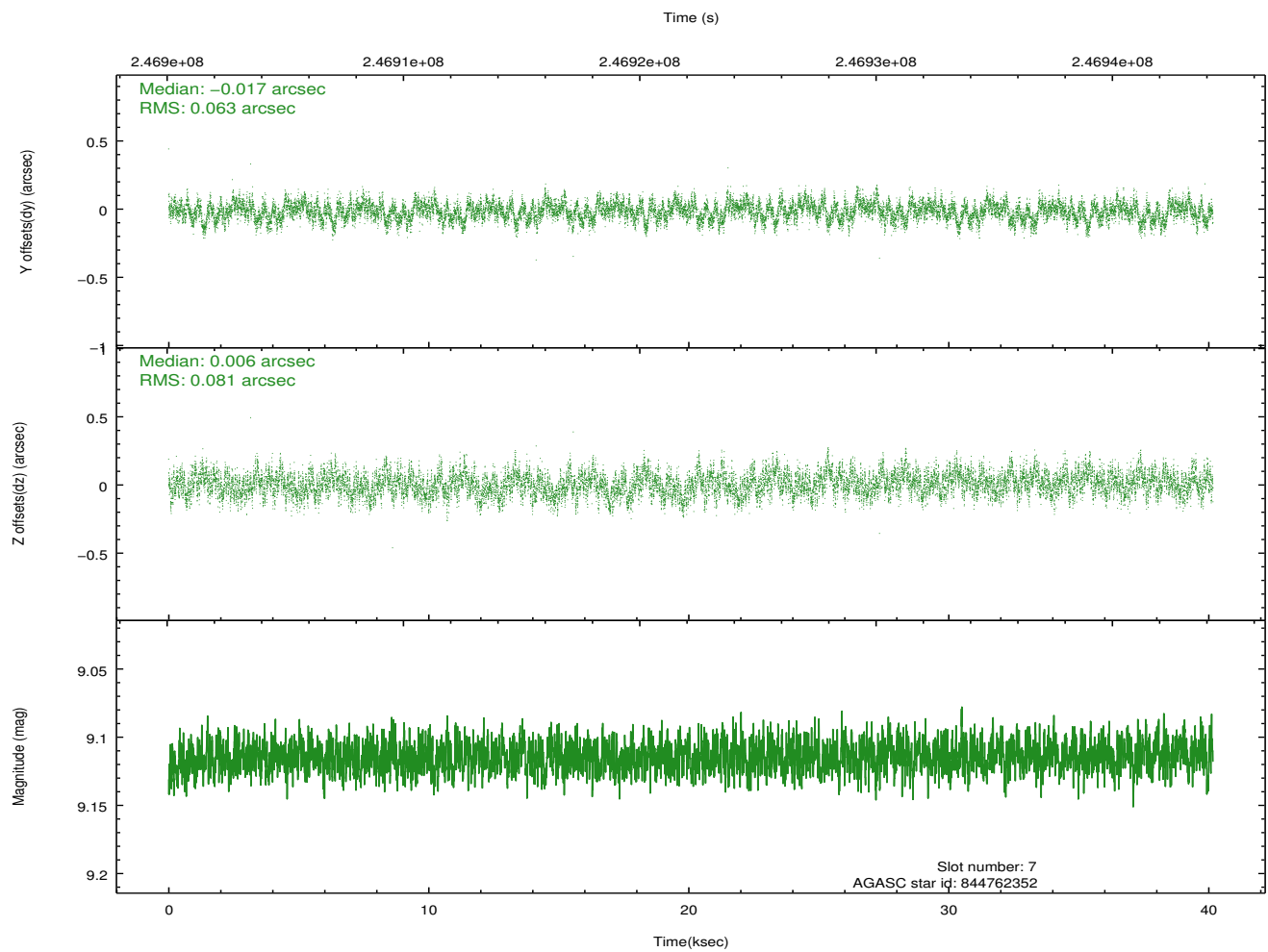
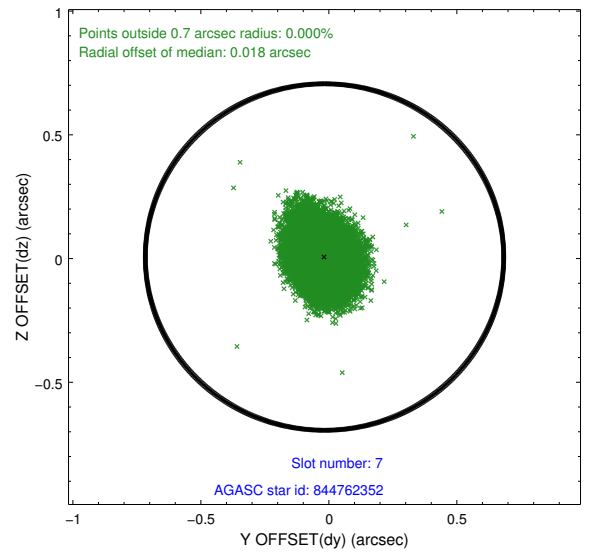
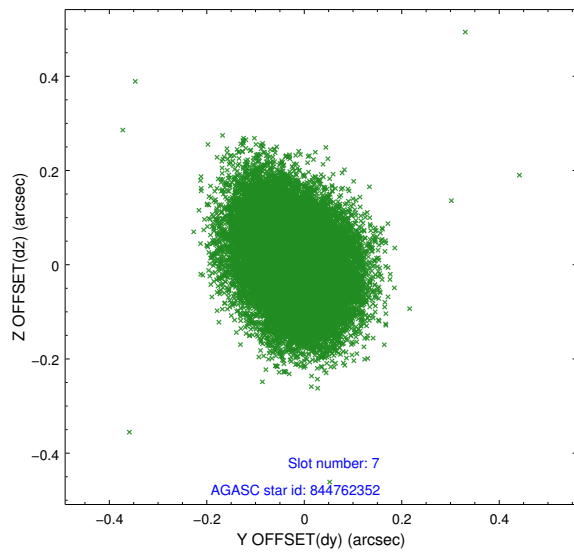
### 2.4.3 Slot 5



### 2.4.4 Slot 6

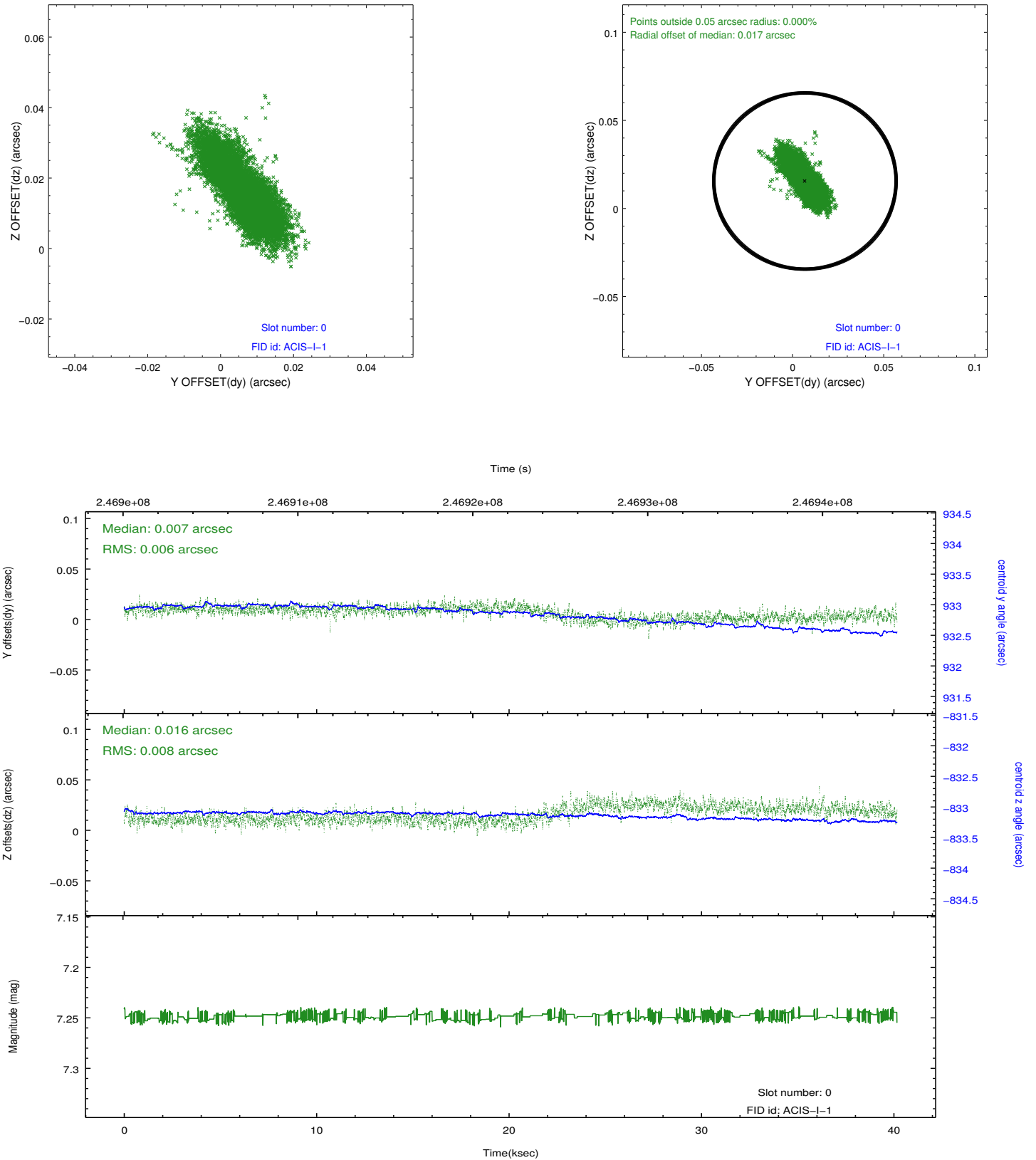


### 2.4.5 Slot 7

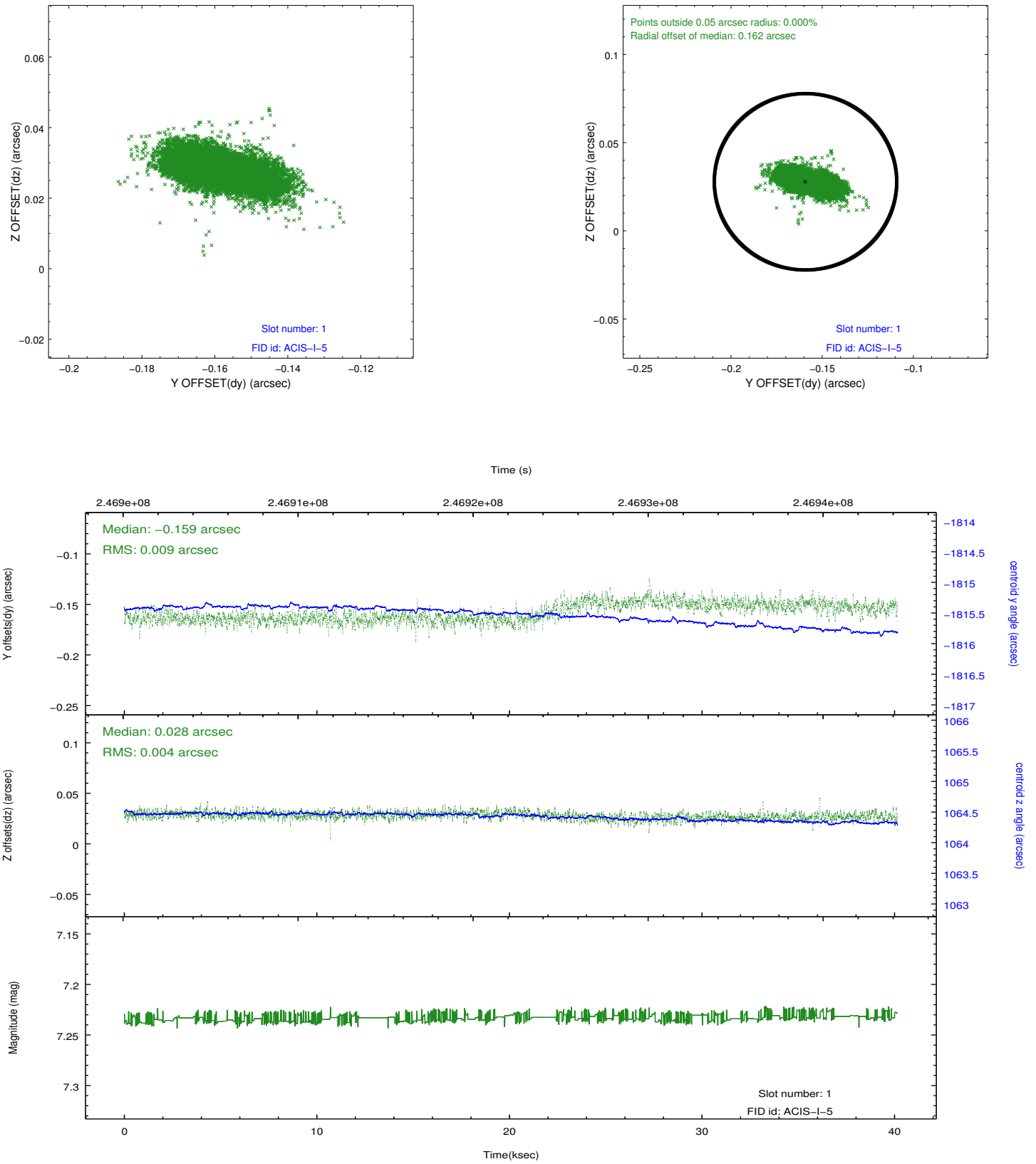


## 2.5 FID Slots

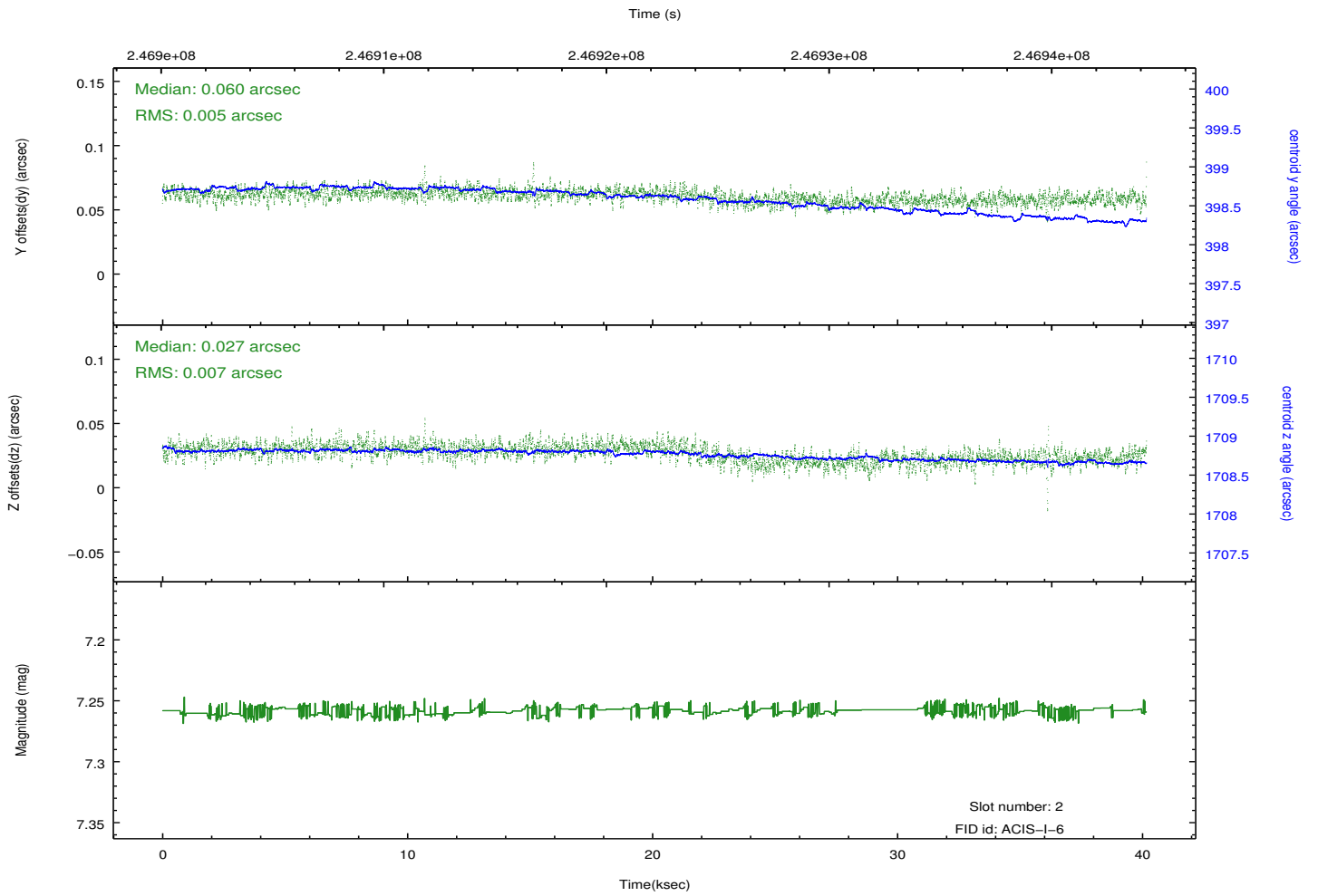
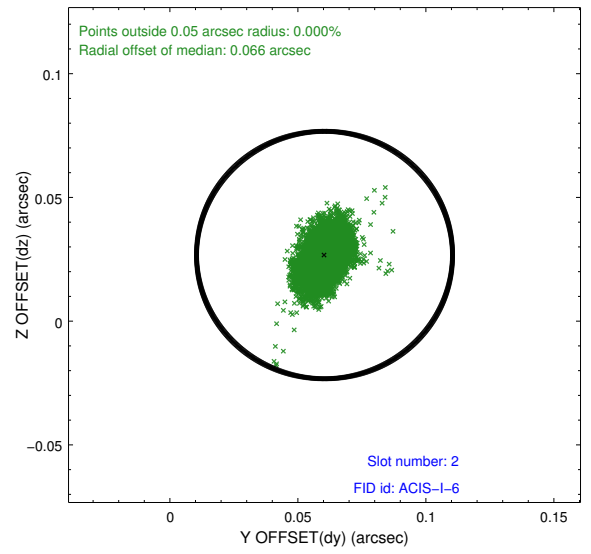
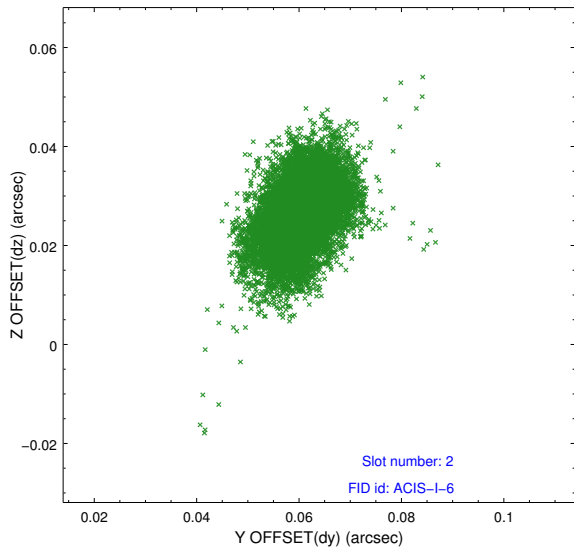
### 2.5.1 Slot 0



## 2.5.2 Slot 1



### 2.5.3 Slot 2



# A Summary

## A.1 Status

V&V Scientist	Jen Lauer
V&V Date (YYYY-MM-DD)	2013.01.28
V&V Edition	1
V&V Disposition and Status	OK
V&V Charge Time	40.14789

## A.2 Comments