

V&V Reference Report

L2 ASCDS Version : 8.1.1

Observation 59 - L2 Version 4
Chandra X-Ray Center

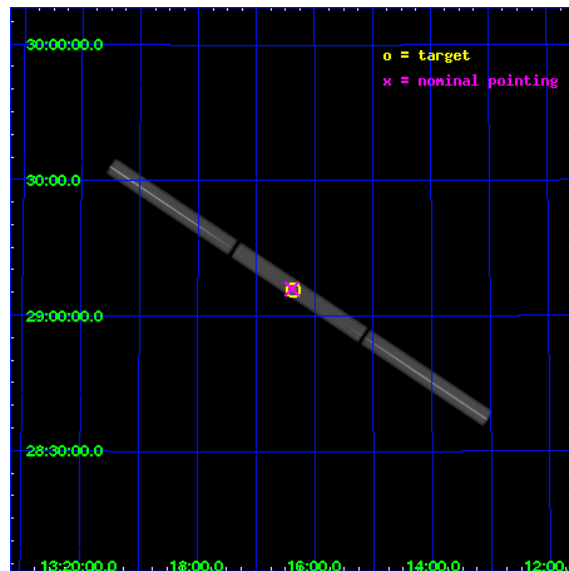
L2 Processing Date : Nov 21 2009

Contents

1	Front	2
2	OBI	3
2.1	OBI	3
2.1.1	Images	3
2.1.2	Parameters	4
2.1.3	Events	4
2.2	Compared Parameters	5
2.3	Aspect	6
2.4	Star Slots	9
2.4.1	Slot 3	9
2.4.2	Slot 4	10
2.4.3	Slot 5	11
2.4.4	Slot 6	12
2.5	FID Slots	13
2.5.1	Slot 0	13
2.5.2	Slot 1	14
2.5.3	Slot 2	15
3	Gratings	16
3.1	LETG Arm	16
A	Summary	18
A.1	Status	18
A.2	Comments	18

1 Front

seq_num	290028	Sequence number
obs_id	59	Observation id
title	GRATINGS CALIBRATION OBSERVATIONS OF A SOFT CONTINUUM: HZ43	Propos
observer	Dr. CXC Calibration	Principal investigator
object	HZ43	Source name
ra_targ	199.092083	Observer's specified target RA
dec_targ	29.099	Observer's specified target Dec
ra_nom	199.09731694398	Nominal RA
dec_nom	29.101562656344	Nominal Dec
roll_nom	33.466971745072	Nominal Roll
revision	4	Processing version of data
ontime	40275.58270482	[s]
livetime	39812.664301822	Ontime multiplied by DTCOR
l2events	3655830	Number of level 2 events

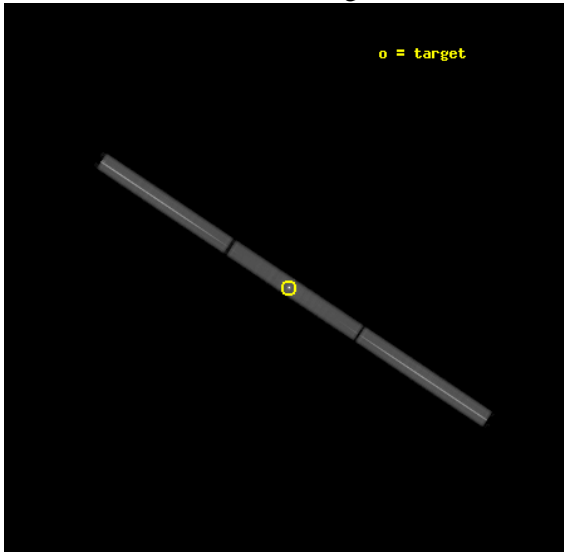


2 OBI

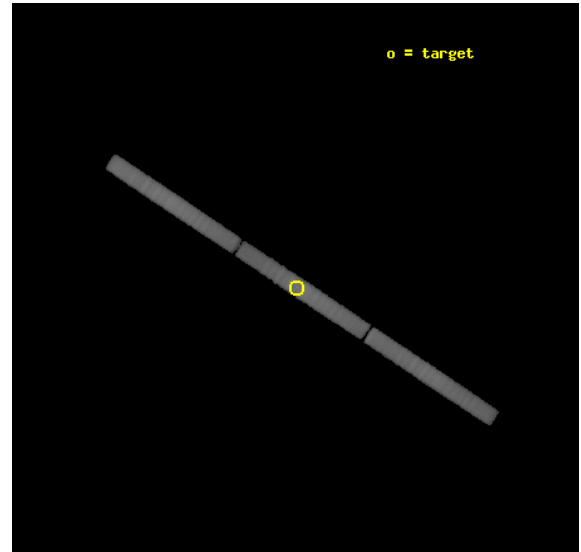
2.1 OBI

2.1.1 Images

Level 1 Image



Level 1 Bad Events



2.1.2 Parameters

obi_num	0	Obi number	sched_exp_time	40000.000000	Scheduled observation exposure time
ascdsver	8.1.1	Processing system revision	ontime	40275.58270482	[s]
caldbver	4.1.4	 	ll events	4891183	Number of level 1 events
date	2009-11-21T14:14:55	Date and time of file creation			
revision	4	Processing version of data			

2.1.3 Events

Level 1 Events

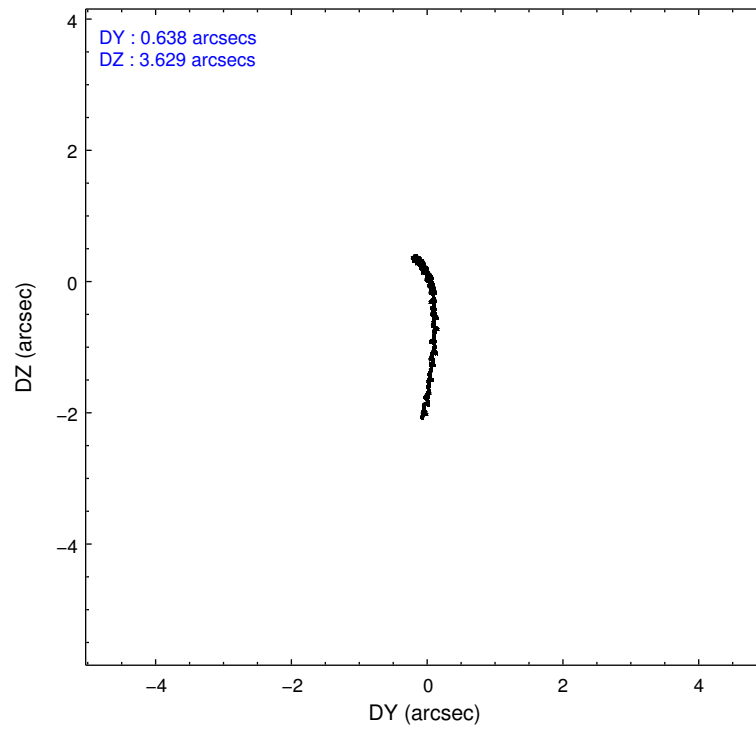
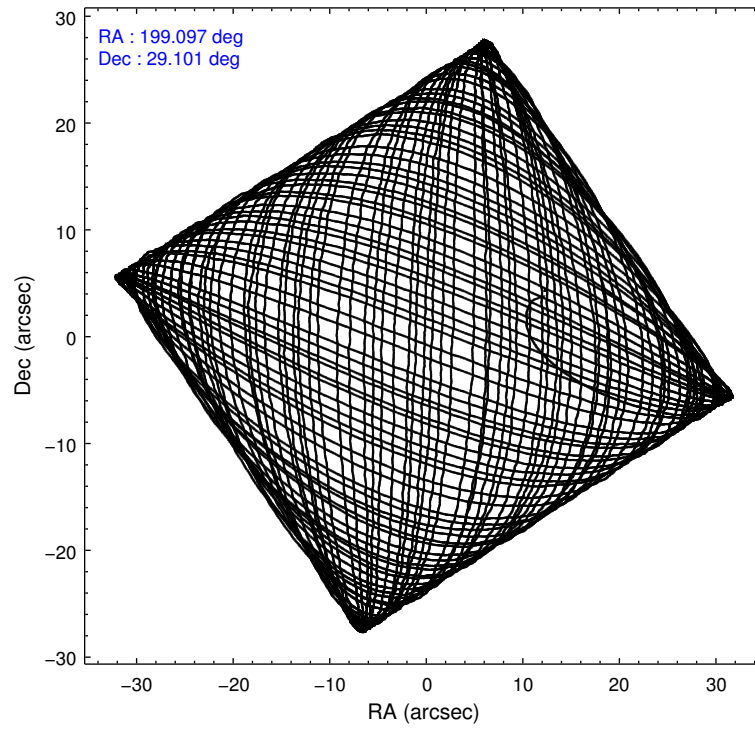
	segment 1	segment 2	segment 3
level 1 events	1703703	1456532	1730948
rejected events	275789	290309	336983
rejected %	16%	19%	19%

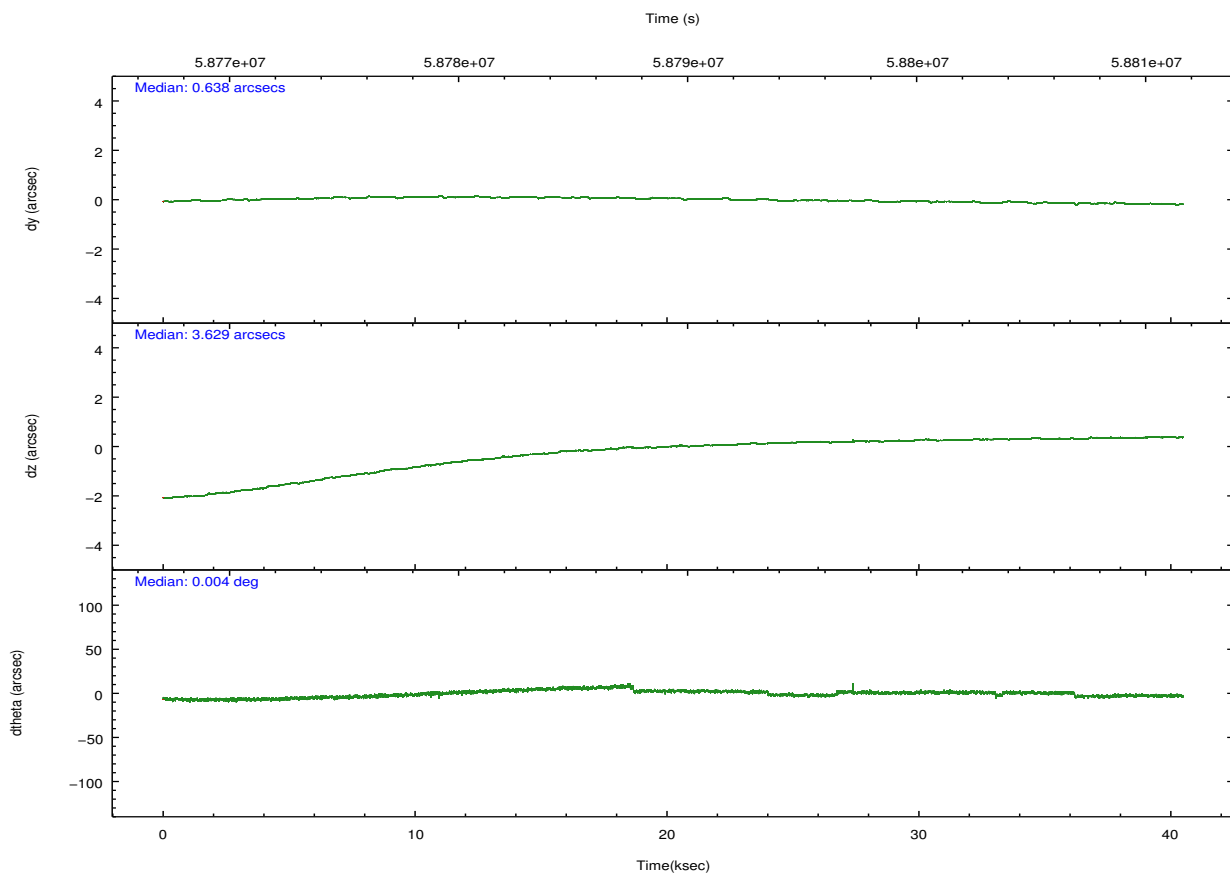
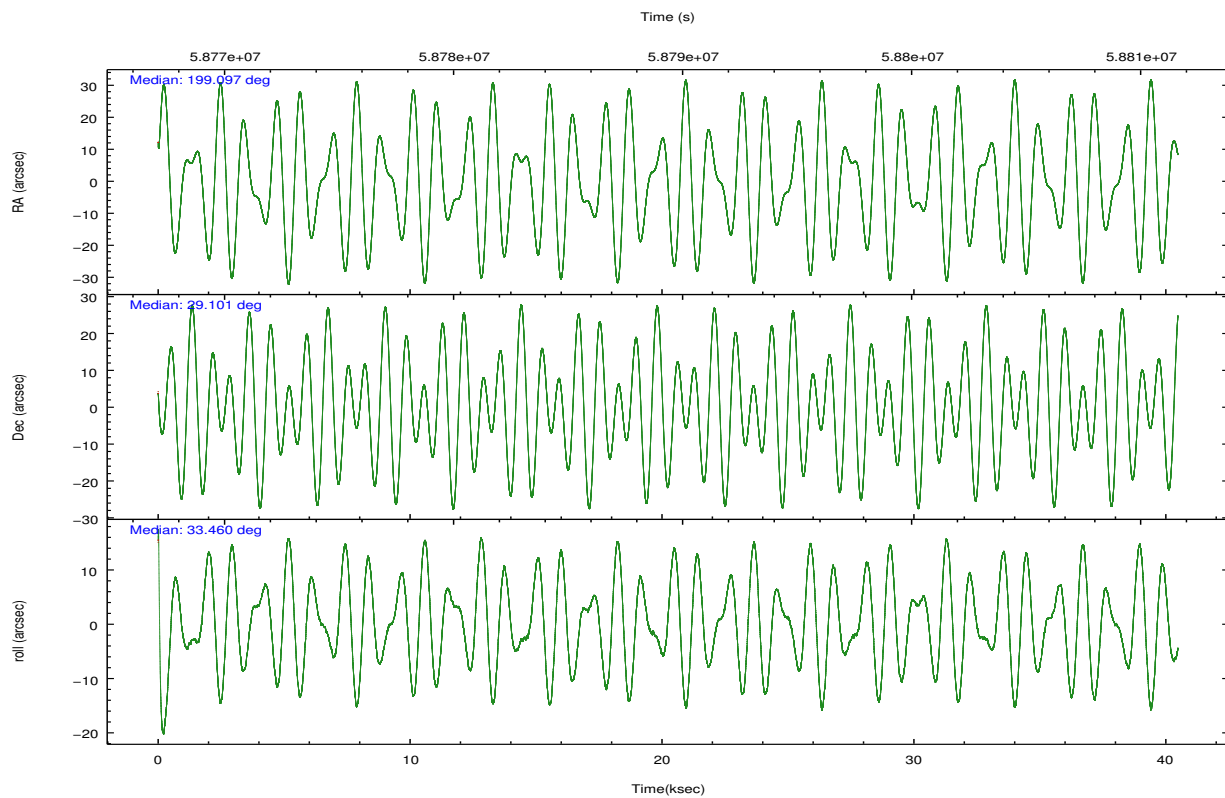
2.2 Compared Parameters

Parameter	Planned	Actual
Instrument	HRC	HRC
Detector	HRC-S	HRC-S
Grating	LETG	LETG
Data mode	OBSERVING	OBSERVING
Observation mode	POINTING	POINTING
Pointing RA	199.083481	199.0973169439812
Pointing Dec	29.075272	29.10156265634381
Pointing Roll	33.406350	33.46697174507212
SIM focus pos (mm)	-1.429586	-1.428180813131781
SIM defocus (mm)	0.1037507710433287	0.1051558262725154
SIM translation stage pos (mm)	250.455976	250.466033080201
SIM translation stage offset (mm)	0	-0.01005468664627074
Observation start time	58769604.184000	58768328.204677
Observation start date	1999-11-12T04:52:20	1999-11-12T04:32:08
Observation end time	58809604.184000	58809737.693673
Observation end date	1999-11-12T15:59:00	1999-11-12T16:02:17

Parameter	Planned	Actual
Obspar format version number	6	6
Obspar file type	PREDICTED	ACTUAL
Obspar update status	NONE	UPDATED

2.3 Aspect



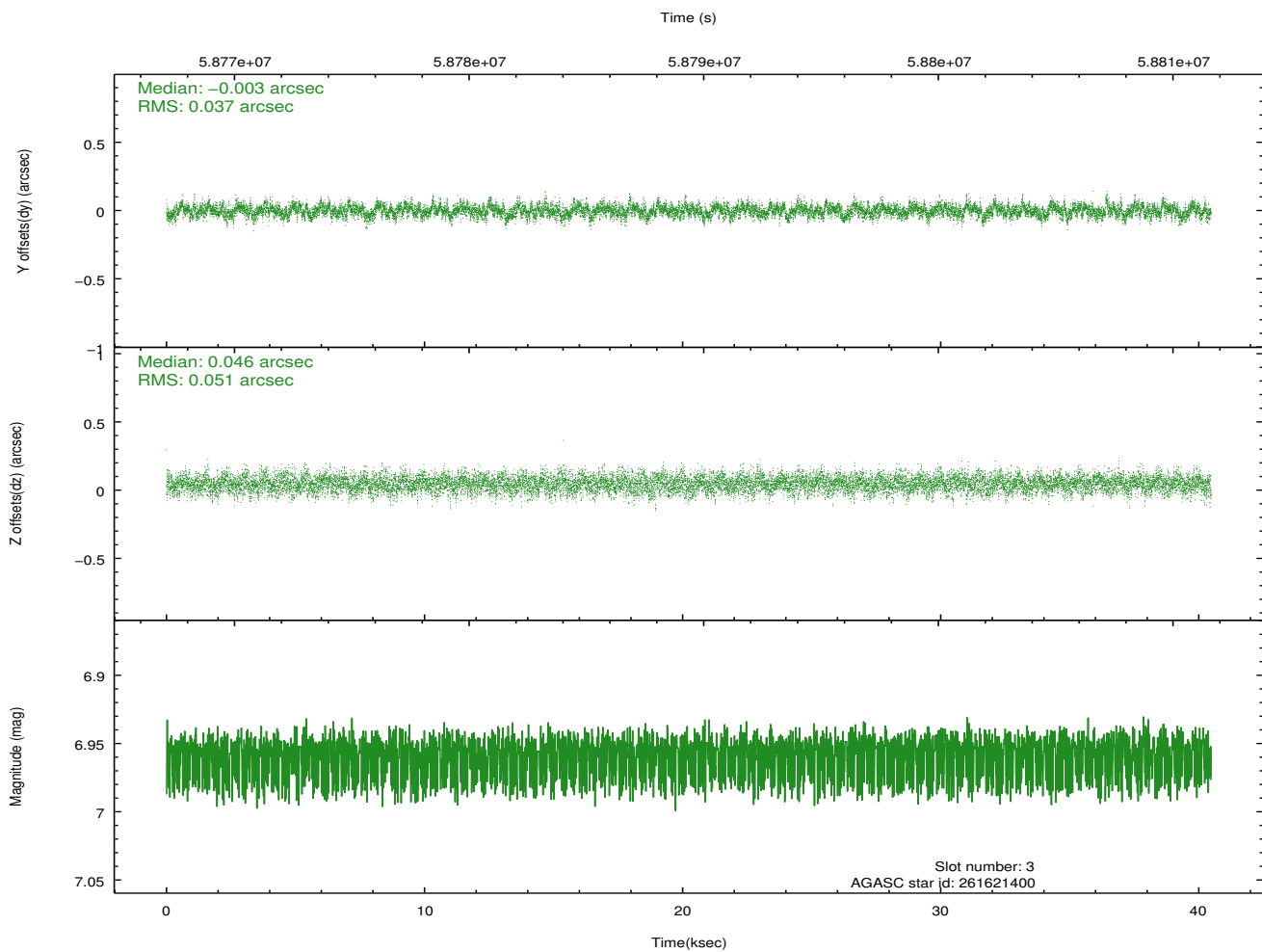
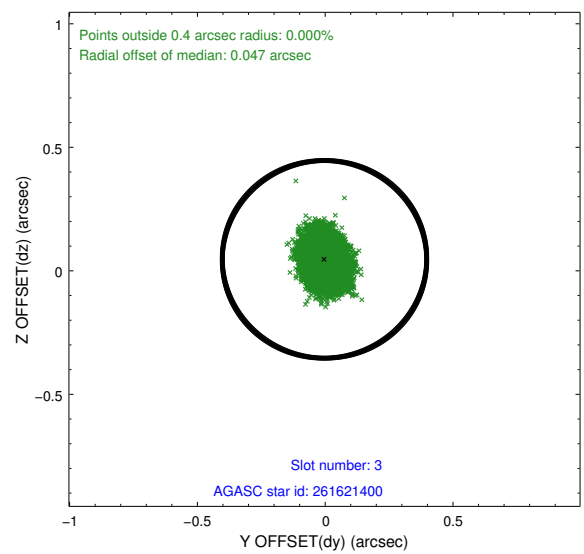
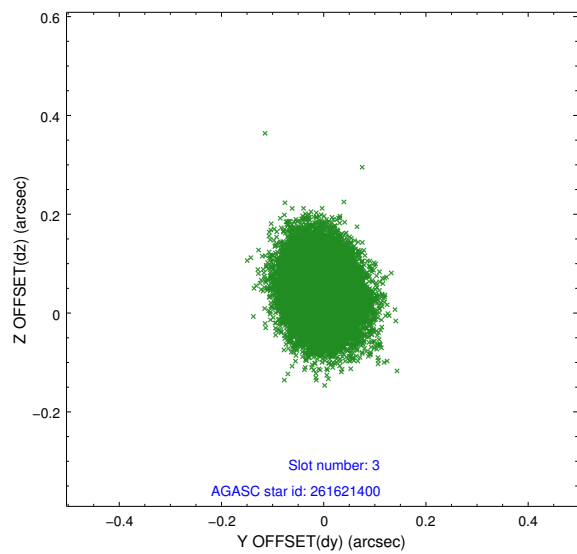


Slot Statistics

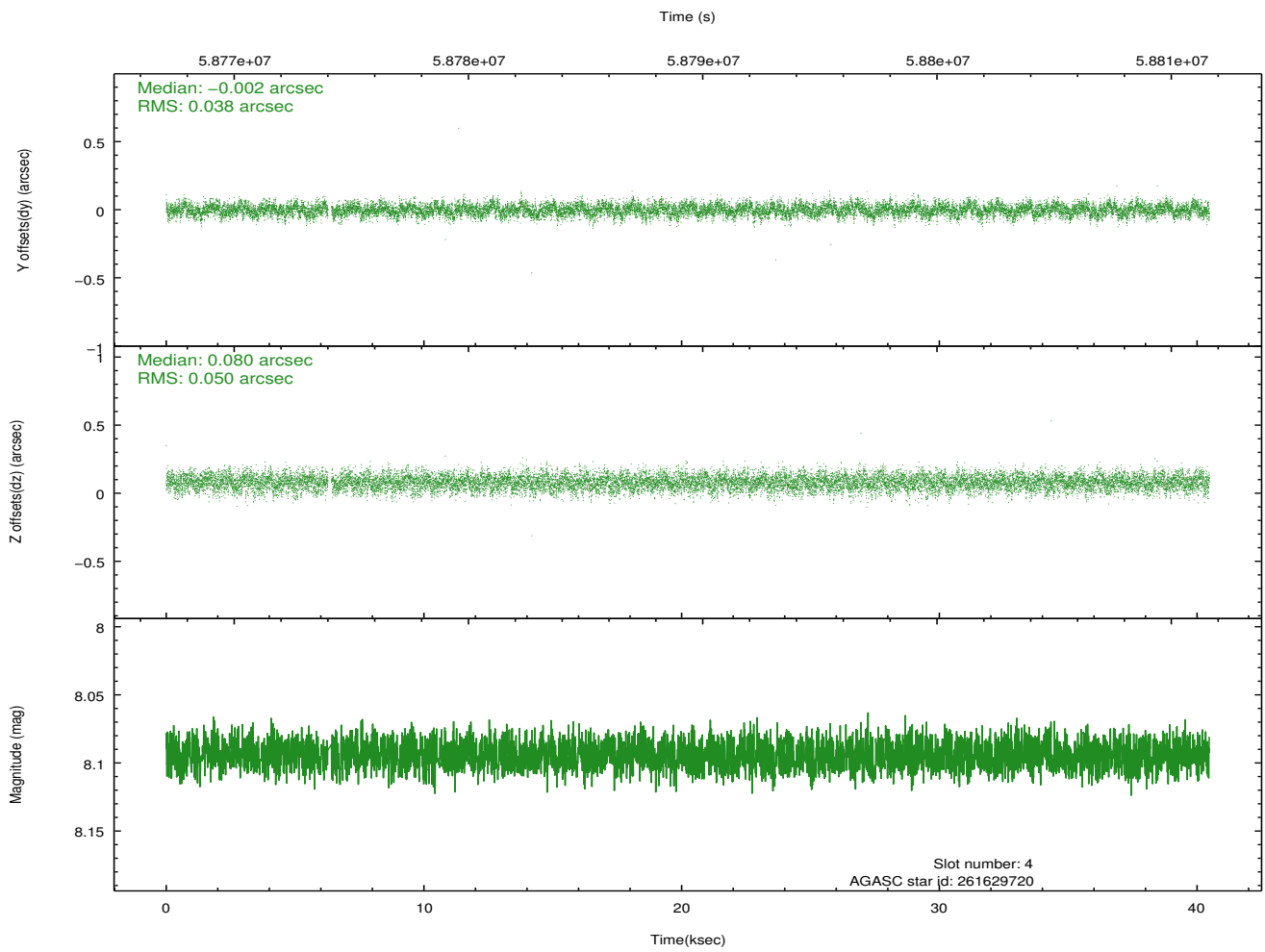
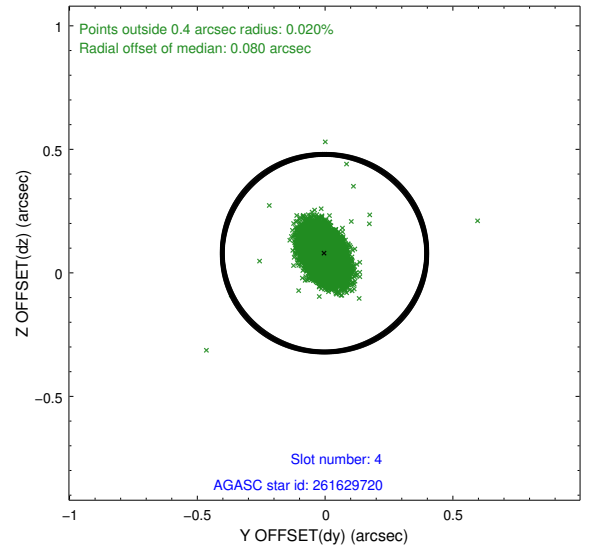
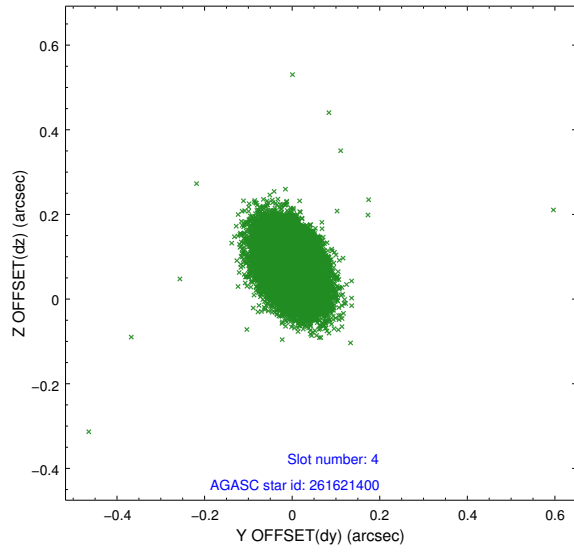
slot	status	id	mag	n_pts	med_dy	med_dz	dr1	dr2	ra	dec	mean_y	mean_z
0	FID	HRC-S-1	6.99	19744	0.169	-0.059	0.033	0.046	0.000000	0.000000	-1154.65	-451.52
1	FID	HRC-S-3	7.00	19747	0.093	-0.123	0.028	0.048	0.000000	0.000000	-1157.37	577.93
2	FID	HRC-S-4	6.99	19745	0.135	-0.117	0.017	0.024	0.000000	0.000000	1243.65	580.26
3	GUIDE	261621400	6.96	19746	-0.003	0.046	0.067	0.110	198.901600	28.741982	-1138.53	-685.16
4	GUIDE	261629720	8.09	19678	-0.002	0.080	0.065	0.110	199.236176	29.044452	341.19	-356.83
5	GUIDE	261619776	8.81	19739	0.014	-0.100	0.083	0.135	198.654383	29.401174	-475.33	1722.36
6	GUIDE	261626376	9.72	19732	-0.009	-0.025	0.097	0.159	198.947288	29.347445	183.68	1053.63
7	UNUSED		0.00	0	0.000	0.000	0.000	0.000	0.000000	0.000000	0.00	0.00

2.4 Star Slots

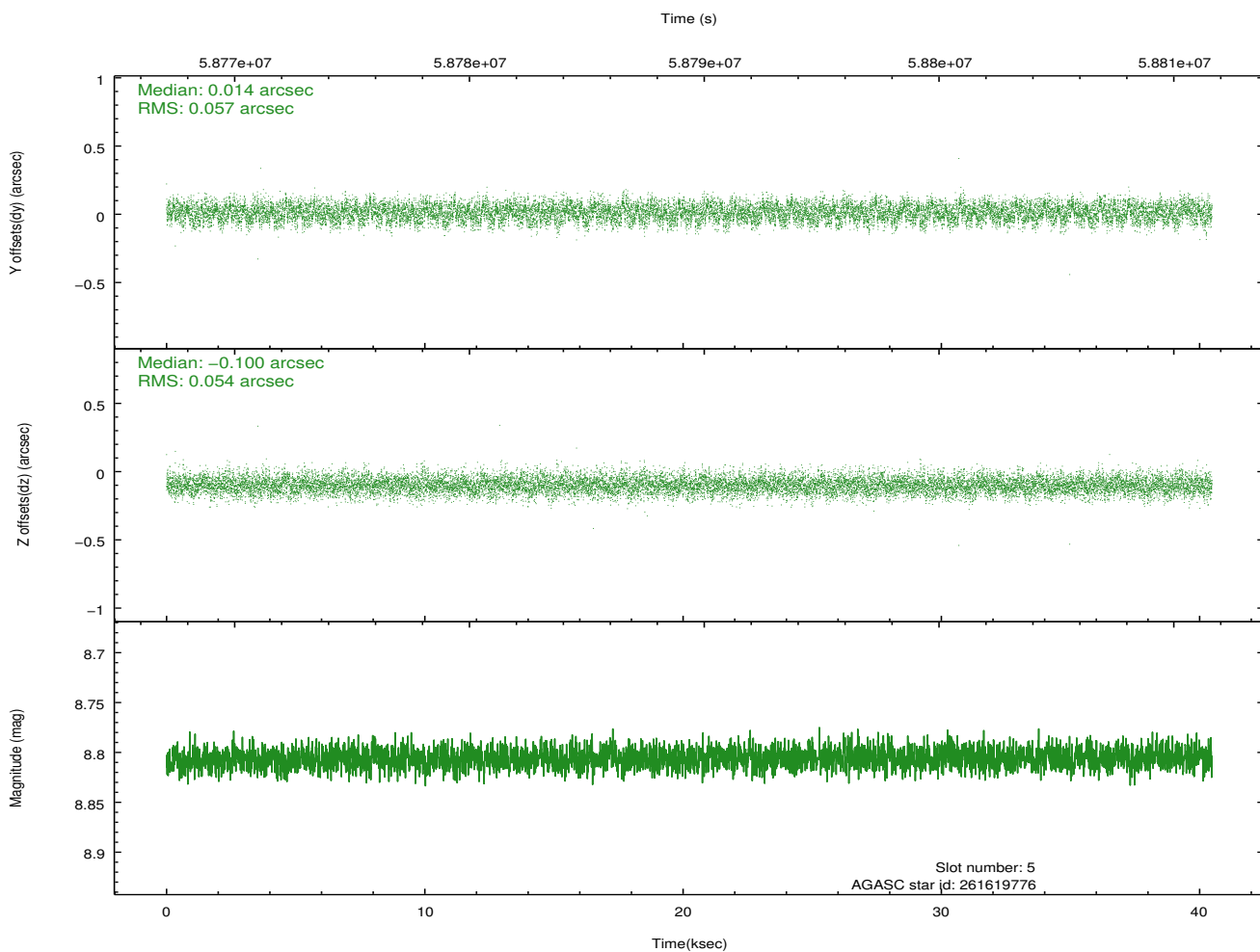
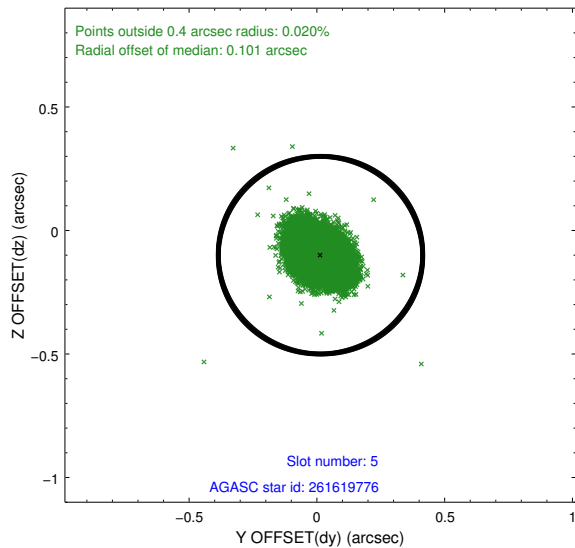
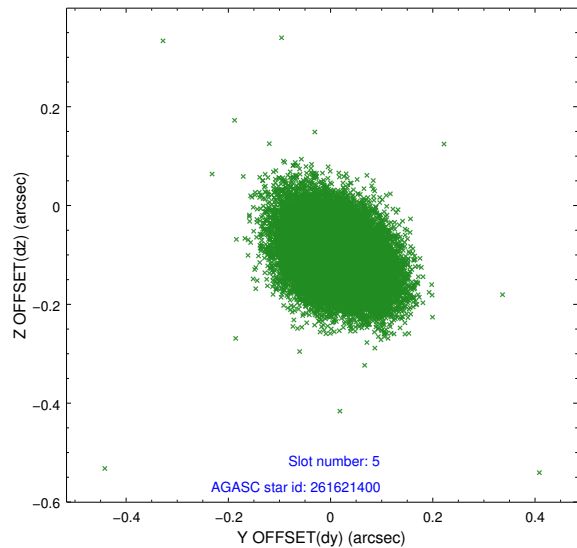
2.4.1 Slot 3



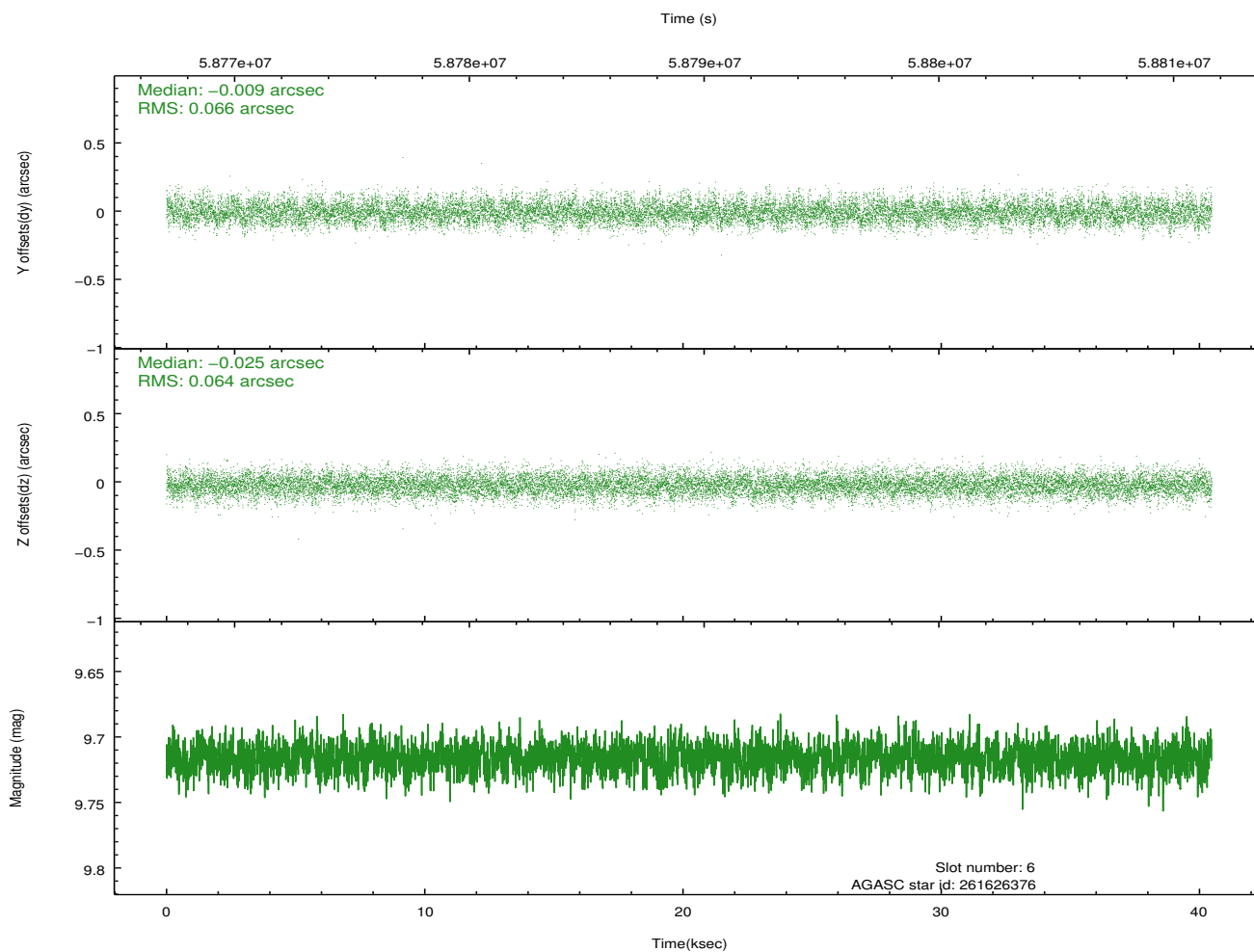
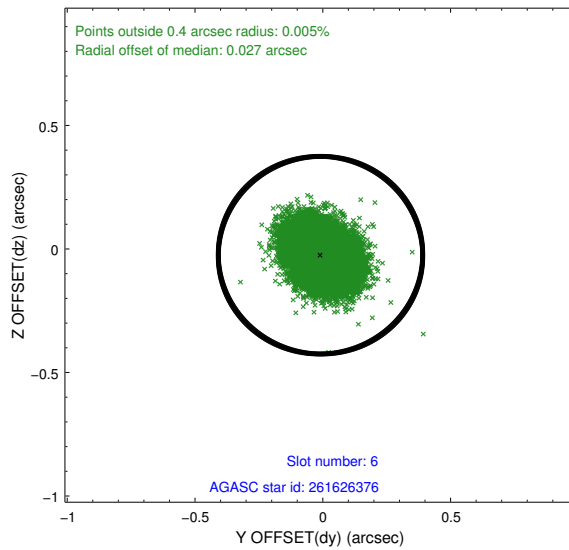
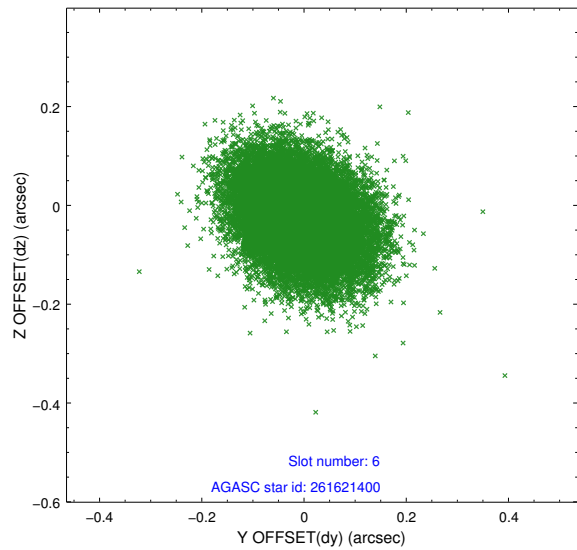
2.4.2 Slot 4



2.4.3 Slot 5

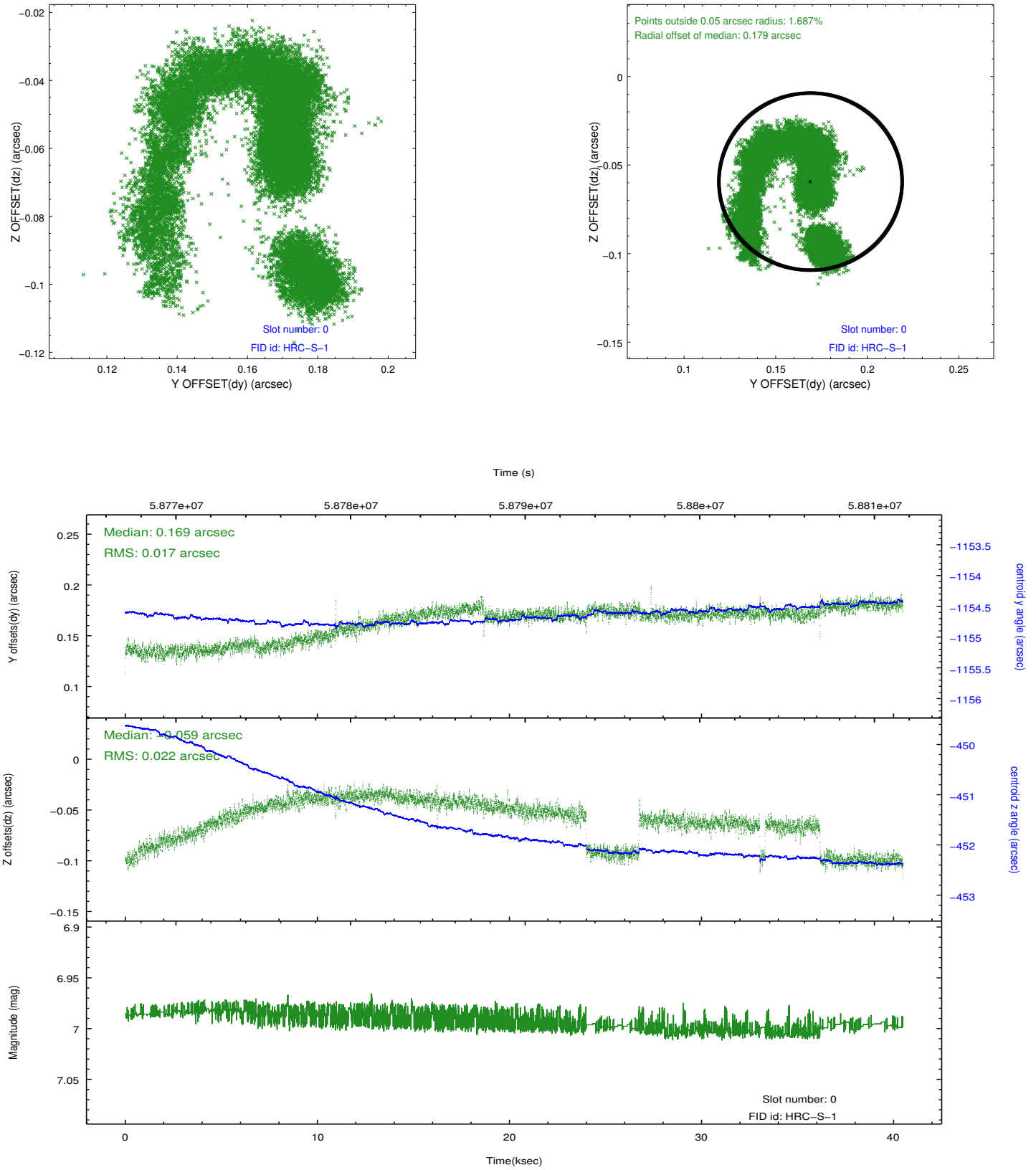


2.4.4 Slot 6

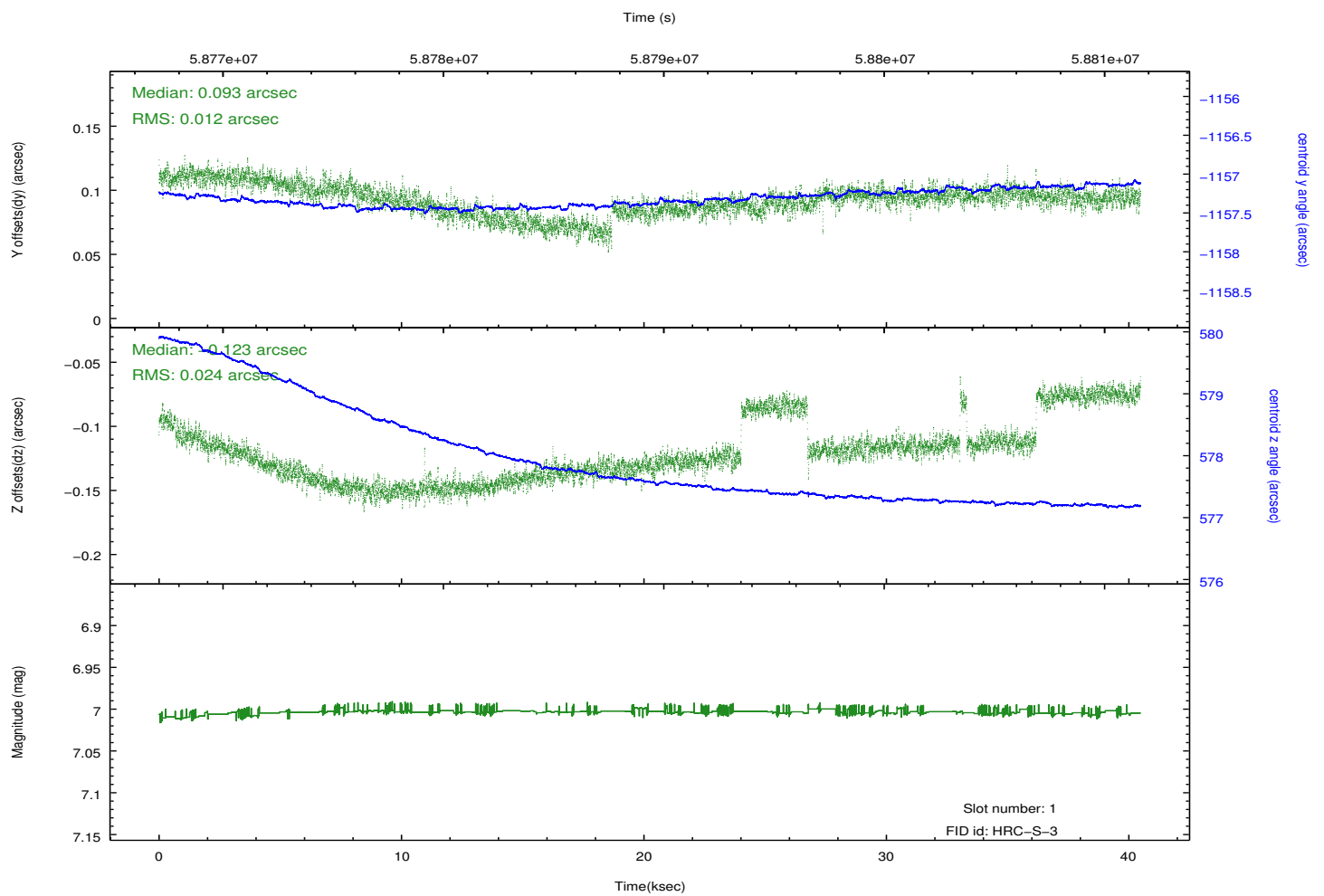
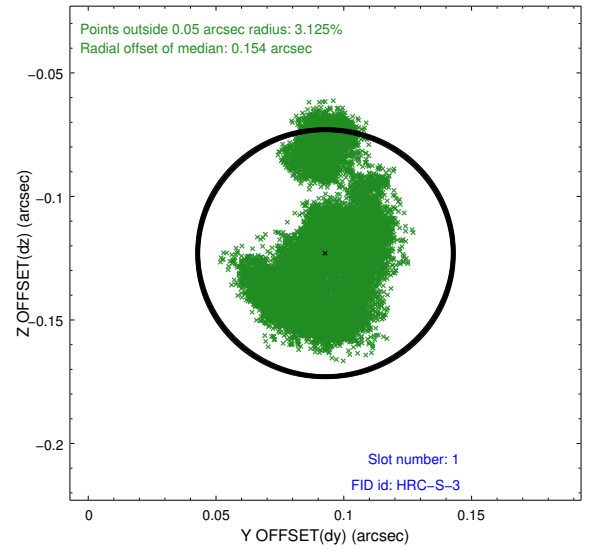
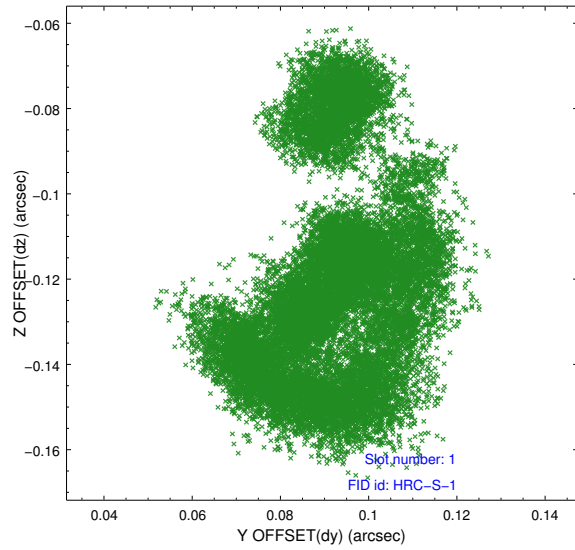


2.5 FID Slots

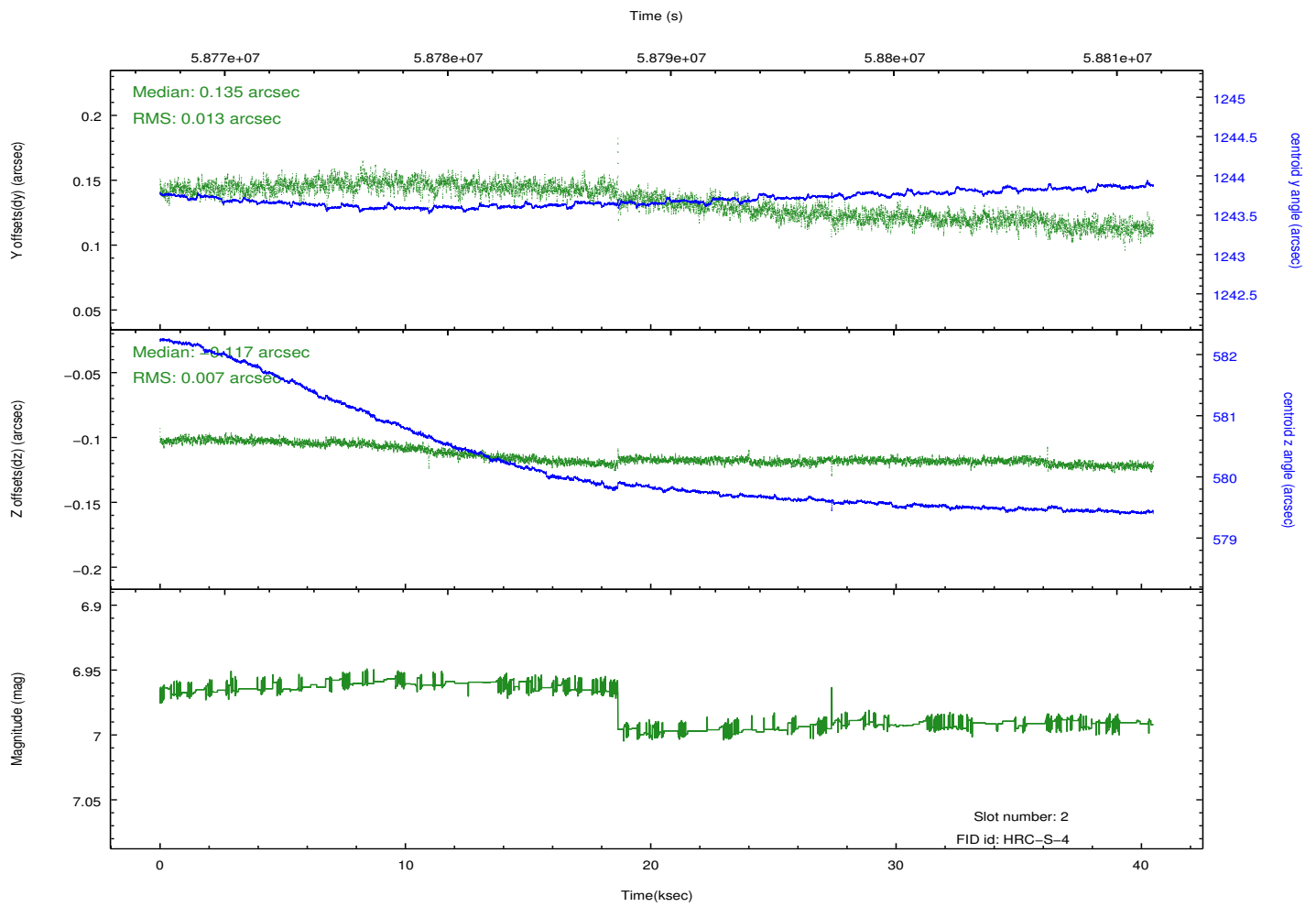
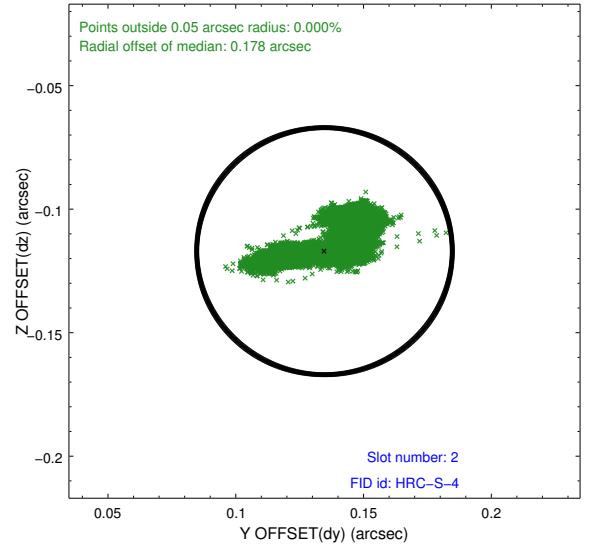
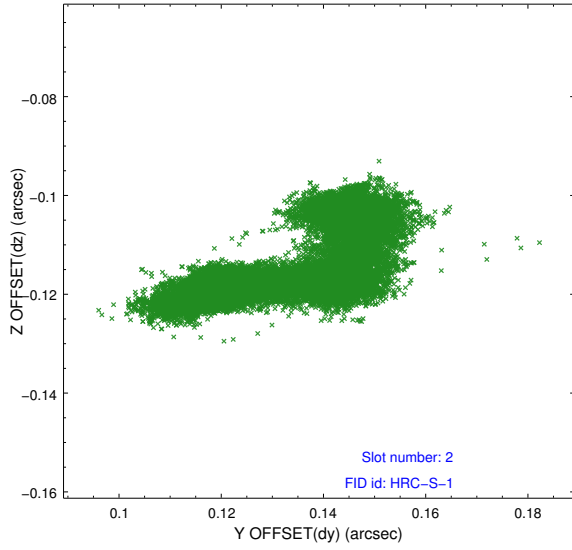
2.5.1 Slot 0



2.5.2 Slot 1

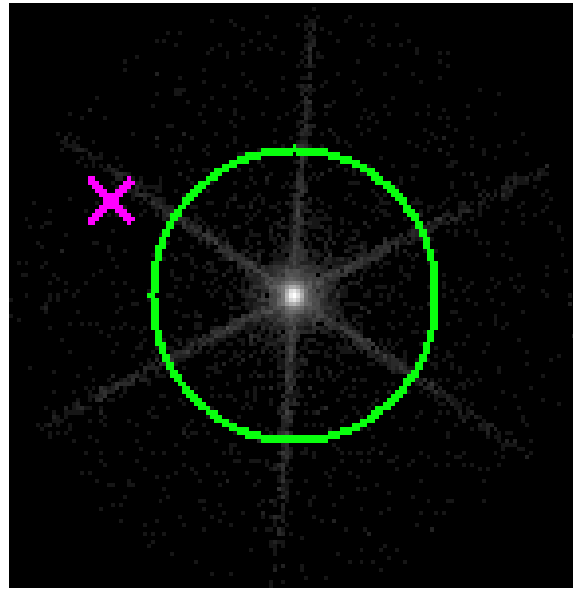


2.5.3 Slot 2

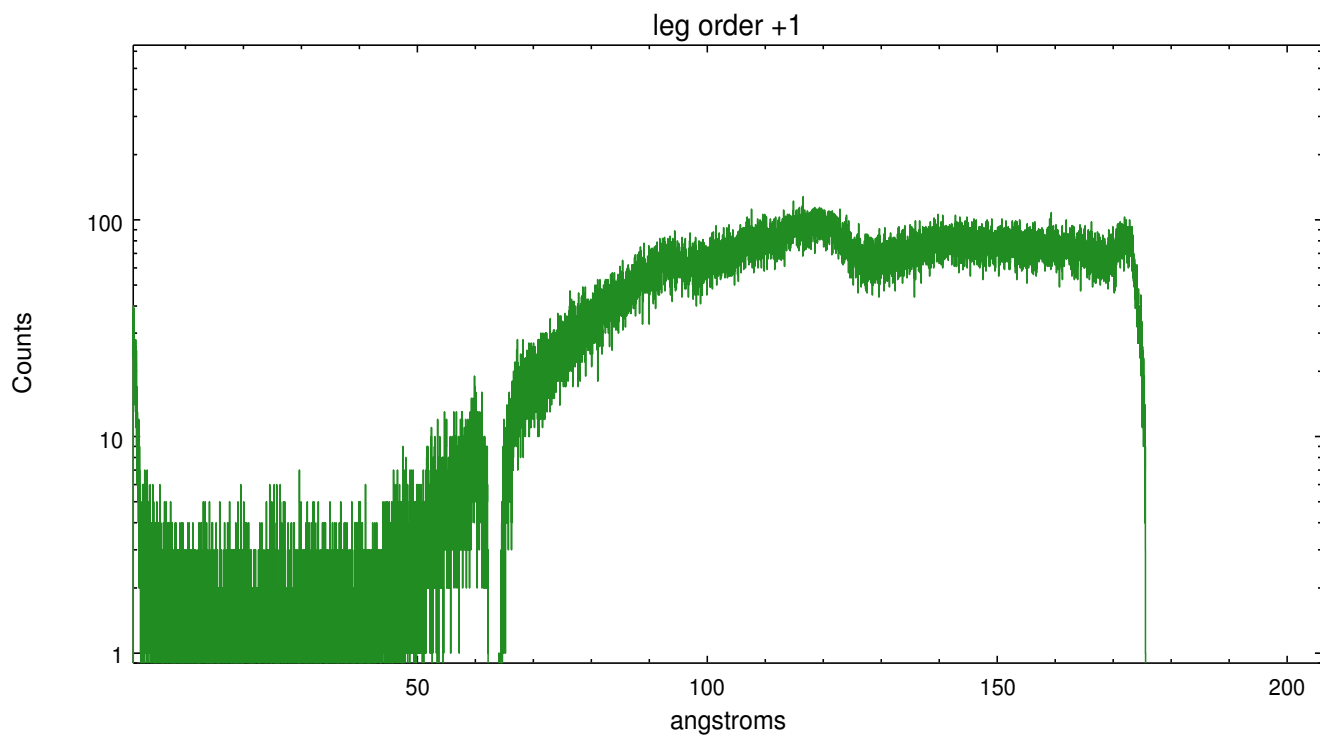
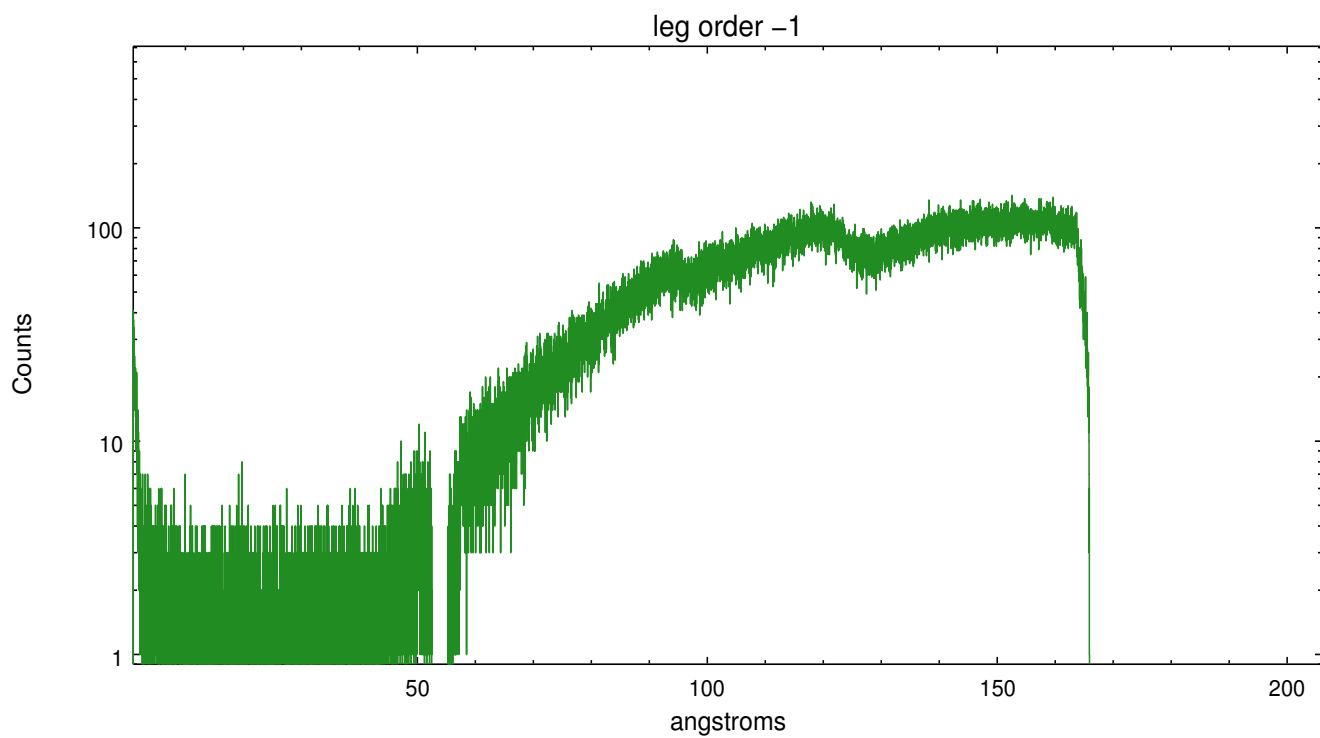


3 Gratings

3.1 LETG Arm



LETG Zero Order



A Summary

A.1 Status

V&V Scientist	Joy Nichols
V&V Date (YYYY-MM-DD)	2010.04.01
V&V Edition	1
V&V Disposition and Status	OK
V&V Charge Time	40.225

A.2 Comments

Target found at ra=13:16:21.870, dec=+29:05:55.51. Coordinates provided by the user were incorrect.

===

Charge time for this ObsId remains at original value of 40.225 ks, although with the current processing the charge time would have been 40.276 ksec.

===

No guide star in slot 7 planned for this observation.