

V&V Reference Report

L2 ASCDS Version : 8.5.1.1

Observation 59439 - L2 Version 4
Chandra X-Ray Center

L2 Processing Date : Mar 7 2013

Contents

1	Front	2
2	OBI	3
2.1	OBI	3
2.1.1	Images	3
2.1.2	Bias	3
2.1.3	Parameters	4
2.1.4	Events	4
2.2	Compared Parameters	5
2.3	Star Slots	6
2.4	FID Slots	6
A	Summary	7
A.1	Status	7
A.2	Comments	7

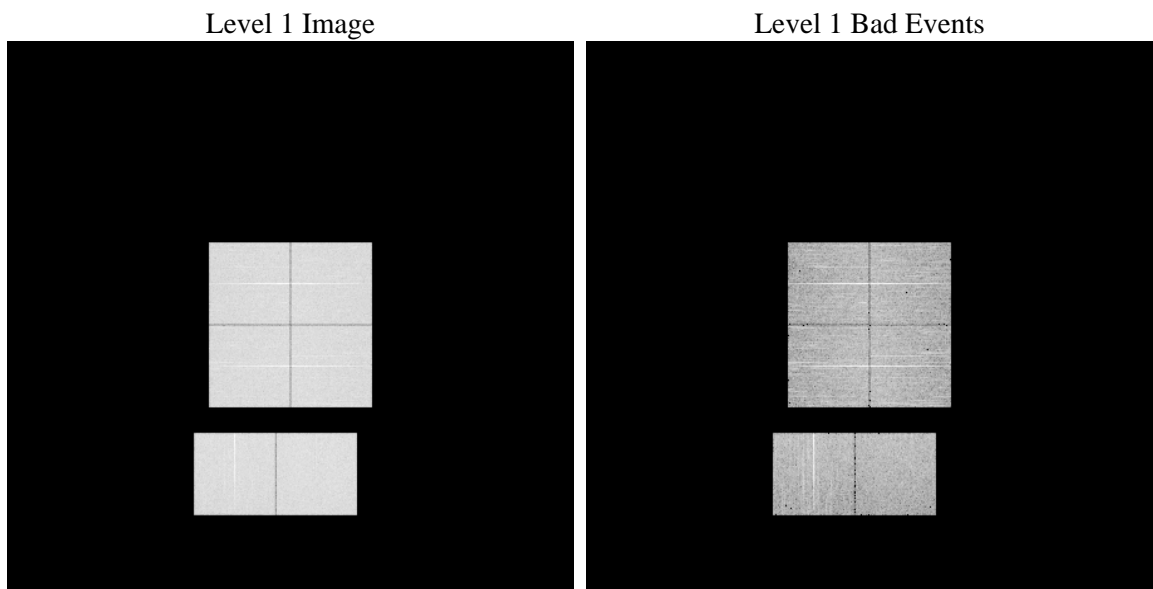
1 Front

seq_num	 	Sequence number
obs_id	59439	Observation id
title	ACIS-012367 diagnostics	Proposal title
observer	CHANDRA engineering request/realtime commanding	Principal investig
object	 	Source name
dtycycle	0	
cycle	P	events from which exps? Prim/Second/Both
ra_targ	0.0	Observer's specified target RA [deg]
dec_targ	0.0	Observer's specified target Dec [deg]
ra_nom	347.68505302742	Nominal RA [deg]
dec_nom	25.975292867635	Nominal Dec [deg]
roll_nom	206.14950988775	Nominal Roll [deg]
revision	4	Processing version of data
ontime	8223.7736323178	Sum of GTIs [s]
livetime	8119.6392588234	Livetime [s]
ontime0	8223.7325923145	Sum of GTIs [s]
ontime1	8223.6915523112	Sum of GTIs [s]
ontime2	8223.6505123079	Sum of GTIs [s]
ontime3	8223.8146723211	Sum of GTIs [s]
ontime6	8223.6094723344	Sum of GTIs [s]
ontime7	8223.7736323178	Sum of GTIs [s]
l2events	1069813	Number of level 2 events

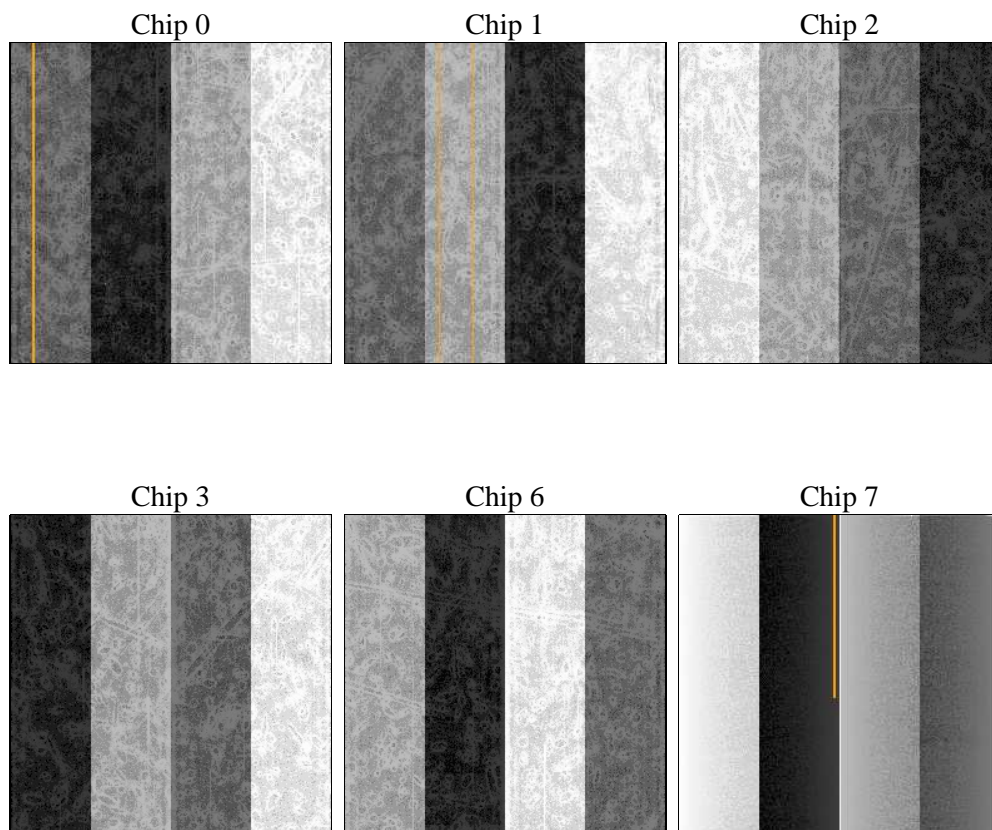
2 OBI

2.1 OBI

2.1.1 Images



2.1.2 Bias



2.1.3 Parameters

obi_num	0	Obi number	sched_exp_time	0.0	[s] Scheduled observation exposure time
ascdsver	8.5.1.1	Processing system revision	ontime	8223.7736323178	Sum of GTIs [s]
caldbver	4.5.6	 	ontime0	8223.7325923145	Sum of GTIs [s]
date	2013-03-08T01:47:41	Date and time of file creation	ontime1	8223.6915523112	Sum of GTIs [s]
revision	4	Processing version of data	ontime2	8223.6505123079	Sum of GTIs [s]
			ontime3	8223.8146723211	Sum of GTIs [s]
			ontime6	8223.6094723344	Sum of GTIs [s]
			ontime7	8223.7736323178	Sum of GTIs [s]
			l1events	1451495	Number of level 1 events

2.1.4 Events

	ccd 0	ccd 1	ccd 2	ccd 3	ccd 6	ccd 7		ccd 0	ccd 1	ccd 2	ccd 3	ccd 6	ccd 7
level 1 events	234269	234412	239830	241192	248013	253779	grade 0 events	100020	99939	103396	103726	104440	48523
rejected events	52937	52567	56085	57639	57059	49530		42%	42%	43%	43%	42%	19%
rejected %	22%	22%	23%	23%	23%	19%	grade 1 events	539	511	607	597	469	162
								0%	0%	0%	0%	0%	0%
							grade 2 events	32282	32625	31230	31481	33248	44986
								13%	13%	13%	13%	13%	17%
							grade 3 events	12032	11772	12110	11957	11929	20394
								5%	5%	5%	4%	4%	8%
							grade 4 events	11636	11924	12139	12158	11796	20283
								4%	5%	5%	5%	4%	7%
							grade 5 events	3162	3306	3032	3607	3589	8248
								1%	1%	1%	1%	1%	3%
							grade 6 events	26799	27114	26400	25786	31154	71721
								11%	11%	11%	10%	12%	28%
							grade 7 events	47799	47221	50916	51880	51388	39462
								20%	20%	21%	21%	20%	15%

2.2 Compared Parameters

Parameter	Planned	Actual	Parameter	Planned	Actual
Instrument	ACIS	ACIS	Obspar format version number	7	7
Detector	ACIS-012367	ACIS-012367	Obspar file type	PREDICTED	ACTUAL
Grating	NONE	NONE	Obspar update status	NONE	UPDATED
Data mode	FAINT	FAINT	On-chip summing requested	N	N
Observation mode	SECONDARY	SECONDARY	Subarray requested	NONE	NONE
[deg] Pointing RA	0	347.6850530274162	Alternating exposures requested	N	N
[deg] Pointing Dec	0	25.97529286763536	[s] Primary exposure time	3.2	3.2
[deg] Pointing Roll	0.0	206.149509887749			
[mm] SIM focus pos	-0.782348	-0.7809083437167272			
[mm] SIM defocus	0	0.7524282956875696			
[mm] SIM translation stage pos	-233.592463	250.4635187648994			
[mm] SIM translation stage offset	0	-0.007540371344731511			
[s] Observation start time (MET)	243803015.878879	243803014.85388			
Observation start date	2005-09-22T19:03:36	2005-09-22T19:03:34			
[s] Observation end time (MET)	243825549.479916	243825548.45491			
Observation end date	2005-09-23T01:19:09	2005-09-23T01:19:08			
Read mode	TIMED	TIMED			

2.3 Star Slots

2.4 FID Slots

A Summary

A.1 Status

V&V Scientist	Jen Lauer
V&V Date (YYYY-MM-DD)	2013.03.08
V&V Edition	1
V&V Disposition and Status	OK
V&V Charge Time	8.2237736323178

A.2 Comments

As a consequence of the DEA-A shutdown anomaly on Sep 15th (DOY258), the reported value of the ACIS FP temperature was ~1.3 degrees warmer than the actual temperature. The value for FP temperature reported in the headers of the Level 2 event file and the Mission Timeline files are incorrect by this amount for this processing. However, the temperature is corrected in the processing in order to obtain the correct temperature for the CTI correction. So the calibrated data are correct. If using the FP temp values in the headers of data files (some CIAO tools require this information), investigators should subtract 1.3 degrees from the reported temperature to determine the true temperature.