

V&V Reference Report

L2 ASCDS Version : 7.6.9

Observation 60969 - L2 Version 001
Chandra X-Ray Center

L2 Processing Date : Oct 12 2006

Contents

1	Front	2
2	OBI	3
2.1	OBI	3
2.1.1	Images	3
2.1.2	Bias	3
2.1.3	Parameters	4
2.1.4	Events	4
2.2	Compared Parameters	5
2.3	Aspect	6
2.4	Star Slots	8
2.5	FID Slots	8
A	Summary	9
A.1	Status	9
A.2	Comments	9

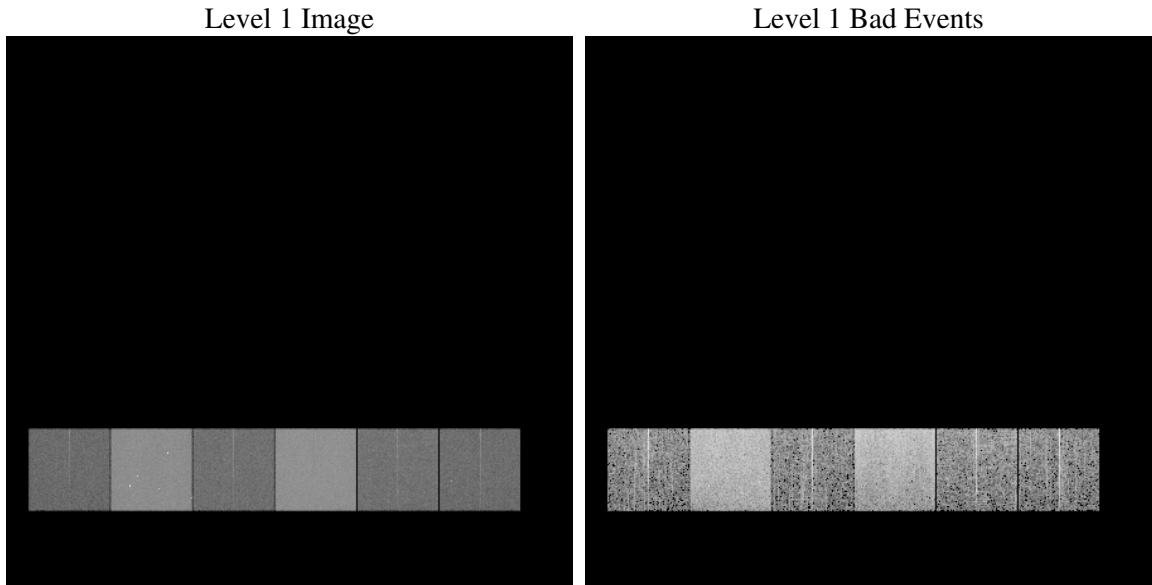
1 Front

seq_num	
obs_id	60969
title	ACIS-456789 diagnostics
observer	CHANDRA engineering request/realtime commanding
object	
dtcycle	0
cycle	P
ra_targ	0.0
dec_targ	0.0
ra_nom	283.01885786259
dec_nom	-25.022945340948
roll_nom	273.85860659903
revision	2
ontime	7791.0089507699
livetime	7692.3545042529
ontime4	2842.1605529785
ontime5	7791.0499907732
ontime6	3117.6064073741
ontime7	7791.0089507699
ontime8	3218.1604874134
ontime9	2997.5654256344
l2events	1176355

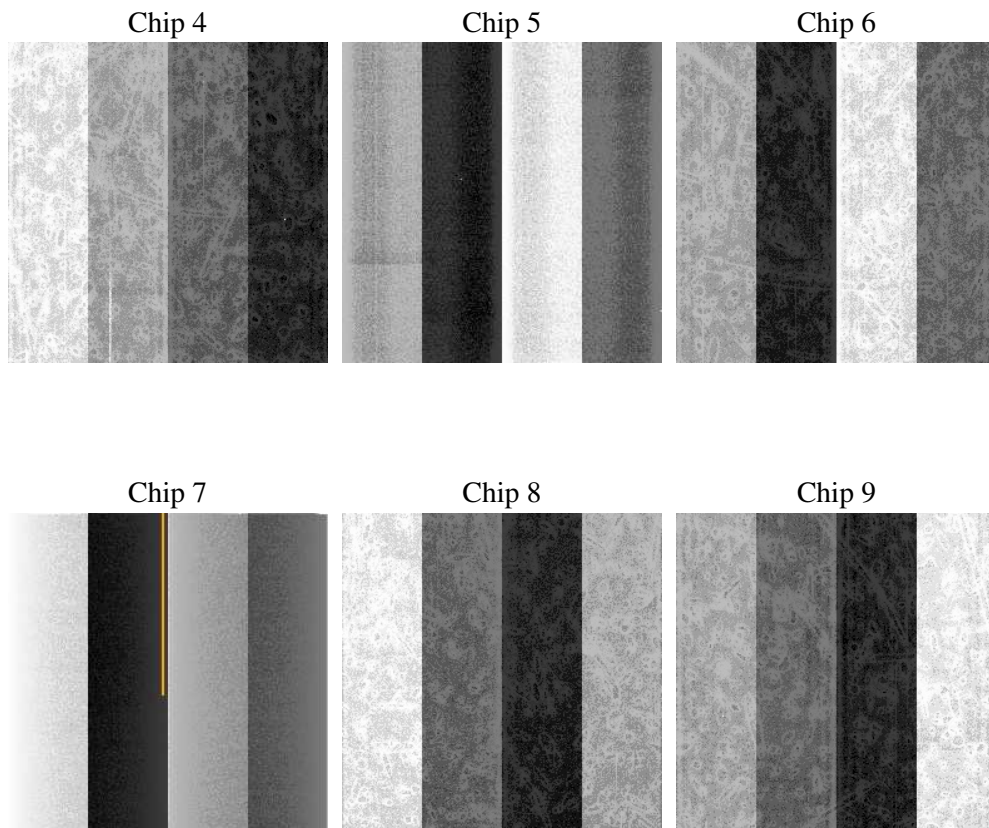
2 OBI

2.1 OBI

2.1.1 Images



2.1.2 Bias



2.1.3 Parameters

obi_num	1
ascdsver	7.6.9
caldbver	3.2.3
date	2006-10-12T05:59:21
revision	2

sched_exp_time	0.0
ontime	7791.3596339524
ontime4	2842.3881161511
ontime5	7791.3596339524
ontime6	3117.87501055
ontime7	7791.3596339524
ontime8	3218.3470106125
ontime9	2997.9571488202
l1events	1430639

2.1.4 Events

	ccd 4	ccd 5	ccd 6	ccd 7	ccd 8	ccd 9
level 1 events	145731	374594	169299	406811	177386	156818
rejected events	20897	58246	21780	52367	23896	20967
rejected %	14%	15%	12%	12%	13%	13%

	ccd 4	ccd 5	ccd 6	ccd 7	ccd 8	ccd 9
grade 0 events	72218	43492	80799	65614	84684	74792
	49%	11%	47%	16%	47%	47%
grade 1 events	519	218	408	155	431	416
	0%	0%	0%	0%	0%	0%
grade 2 events	20159	147777	25463	106135	26563	23321
	13%	39%	15%	26%	14%	14%
grade 3 events	8174	11119	8931	26664	9872	8684
	5%	2%	5%	6%	5%	5%
grade 4 events	8209	11131	9148	26351	9800	8634
	5%	2%	5%	6%	5%	5%
grade 5 events	1373	6740	1519	7091	1801	1582
	0%	1%	0%	1%	1%	1%
grade 6 events	16074	102829	23178	129680	22571	20420
	11%	27%	13%	31%	12%	13%
grade 7 events	19005	51288	19853	45121	21664	18969
	13%	13%	11%	11%	12%	12%

2.2 Compared Parameters

Parameter	Planned	Actual	Parameter	Planned	Actual
Instrument	ACIS	ACIS	Obspar format version number	6	6
Detector	ACIS-456789	ACIS-456789	Obspar file type	PREDICTED	ACTUAL
Grating	NONE	NONE	Obspar update status	NONE	UPDATED
Data mode	FAINT	FAINT	On-chip summing requested	N	N
Observation mode	SECONDARY	SECONDARY	Subarray requested	NONE	NONE
Pointing RA	0	283.0188578625939	Alternating exposures requested	N	N
Pointing Dec	0	-25.02294534094785	Primary exposure time	3.2	3.2
Pointing Roll	0.0	273.8586065990339			
SIM focus pos (mm)	-0.684267	-0.6828225247311905			
SIM defocus (mm)	0	0.8505141146731063			
SIM translation stage pos (mm)	-190.132523	250.466033080201			
SIM translation stage offset (mm)	0	-0.01005468664627074			
Observation start time	153062221.895878	153062220.87117			
Observation start date	2002-11-07T13:17:02	2002-11-07T13:17:00			
Observation end time	153099177.247415	153099176.2227			
Observation end date	2002-11-07T23:32:57	2002-11-07T23:32:56			
Read mode	TIMED	TIMED			

2.3 Aspect

2.4 Star Slots

2.5 FID Slots

A Summary

A.1 Status

V&V Scientist	Jen Lauer
V&V Date (YYYY-MM-DD)	2006.10.12
V&V Edition	1
V&V Disposition and Status	OK
V&V Charge Time	7.79100895

A.2 Comments