

V&V Reference Report

L2 ASCDS Version : 8.5

Observation 6109 - L2 Version 3
Chandra X-Ray Center

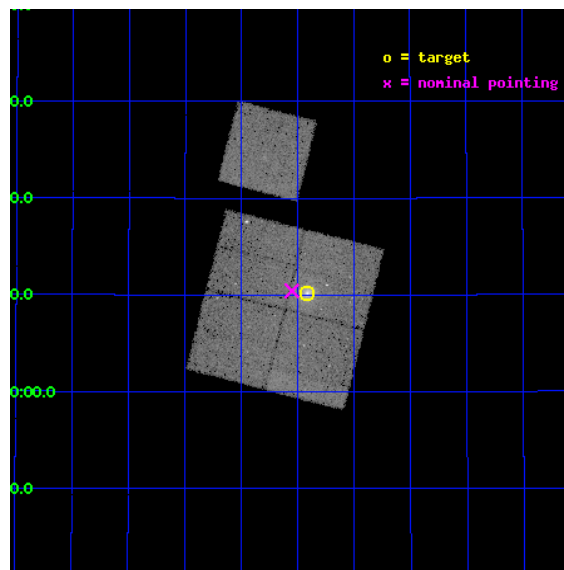
L2 Processing Date : Dec 12 2012

Contents

1	Front	2
2	OBI	3
2.1	OBI	3
2.1.1	Images	3
2.1.2	Bias	3
2.1.3	Parameters	4
2.1.4	Events	4
2.2	Compared Parameters	5
2.3	Aspect	6
2.4	Star Slots	9
2.4.1	Slot 3	9
2.4.2	Slot 4	10
2.4.3	Slot 5	11
2.4.4	Slot 6	12
2.4.5	Slot 7	13
2.5	FID Slots	14
2.5.1	Slot 0	14
2.5.2	Slot 1	15
2.5.3	Slot 2	16
A	Summary	17
A.1	Status	17
A.2	Comments	17

1 Front

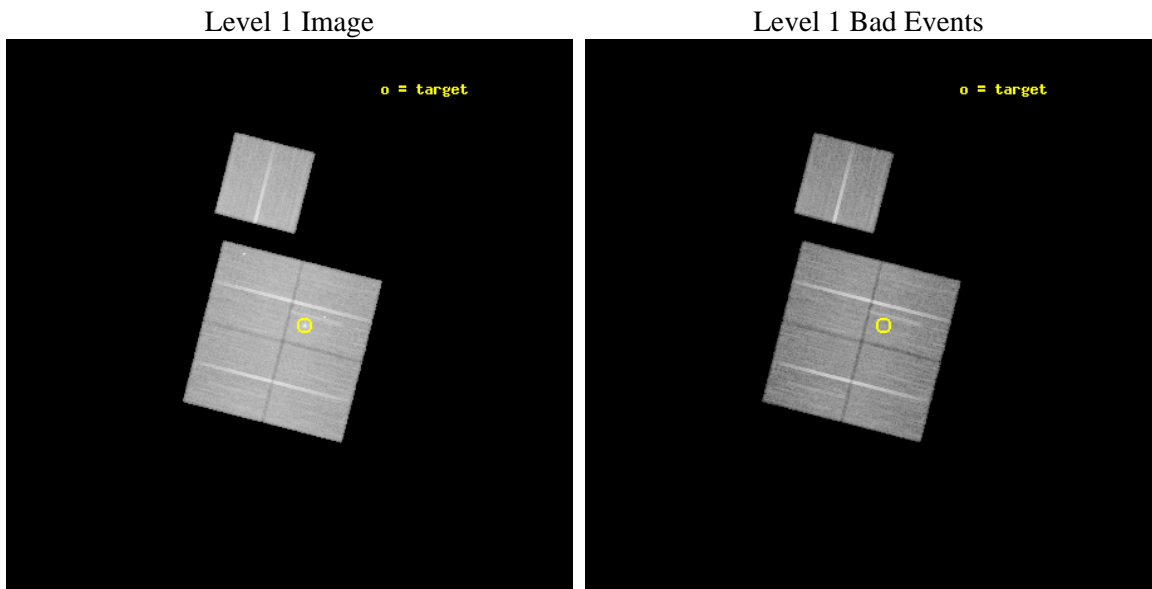
seq_num	800557	Sequence number
obs_id	6109	Observation id
title	Probing dark energy using the X-ray gas mass fraction in dynamically relaxed galaxy clusters	Proposal title
observer	Prof. Steven Allen	Principal investigator
object	MACS1621.6+3810	Source name
dtcycle	0	
cycle	P	events from which exps? Prim/Second/Both
ra_targ	245.353333	Observer's specified target RA [deg]
dec_targ	38.168889	Observer's specified target Dec [deg]
ra_nom	245.38798000769	Nominal RA [deg]
dec_nom	38.173873223927	Nominal Dec [deg]
roll_nom	14.289235619688	Nominal Roll [deg]
revision	3	Processing version of data
ontime	38046.258936673	Sum of GTIs [s]
livetime	37549.156554417	Livetime [s]
ontime0	38043.117976367	Sum of GTIs [s]
ontime1	38043.117966384	Sum of GTIs [s]
ontime2	38043.117986321	Sum of GTIs [s]
ontime3	38046.258936673	Sum of GTIs [s]
ontime6	38043.117976427	Sum of GTIs [s]
l2events	108882	Number of level 2 events



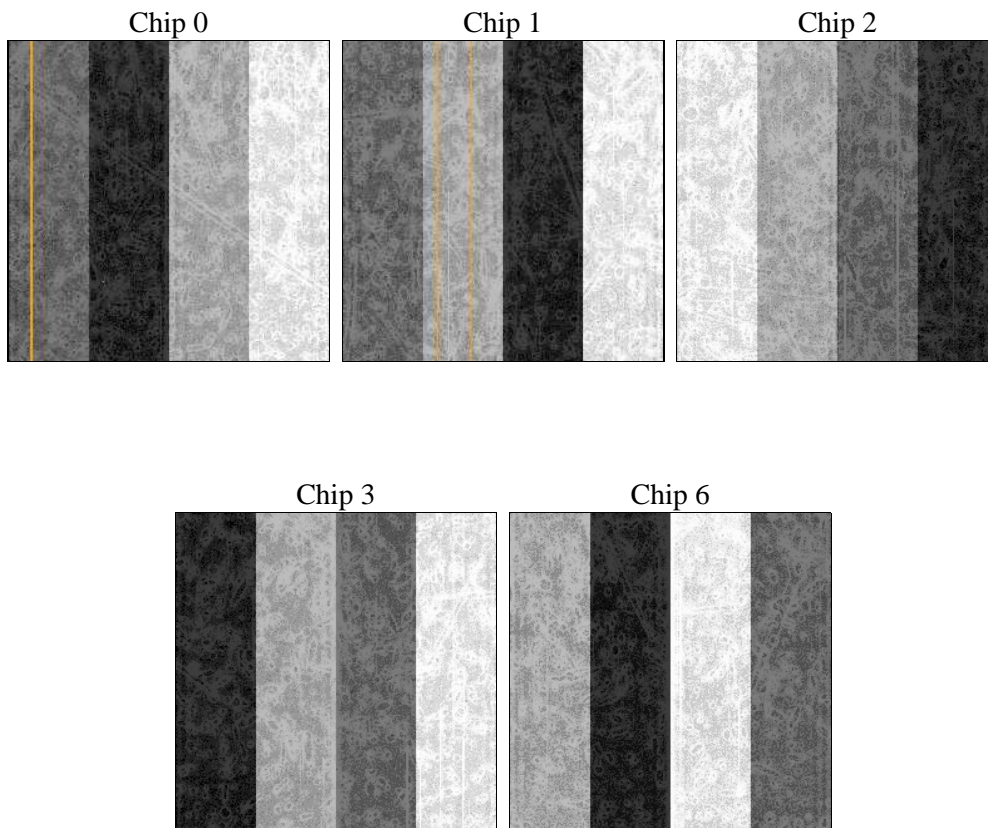
2 OBI

2.1 OBI

2.1.1 Images



2.1.2 Bias



2.1.3 Parameters

obi_num	0	Obi number	sched_exp_time	38000.000000	[s] Scheduled observation exposure time
ascdsver	8.5	Processing system revision	ontime	38046.258936673	Sum of GTIs [s]
caldsver	4.5.4	 	ontime0	38043.117976367	Sum of GTIs [s]
date	2012-12-12T15:02:46	Date and time of file creation	ontime1	38043.117966384	Sum of GTIs [s]
revision	3	Processing version of data	ontime2	38043.117986321	Sum of GTIs [s]
			ontime3	38046.258936673	Sum of GTIs [s]
			ontime6	38043.117976427	Sum of GTIs [s]
			l1events	1196297	Number of level 1 events

2.1.4 Events

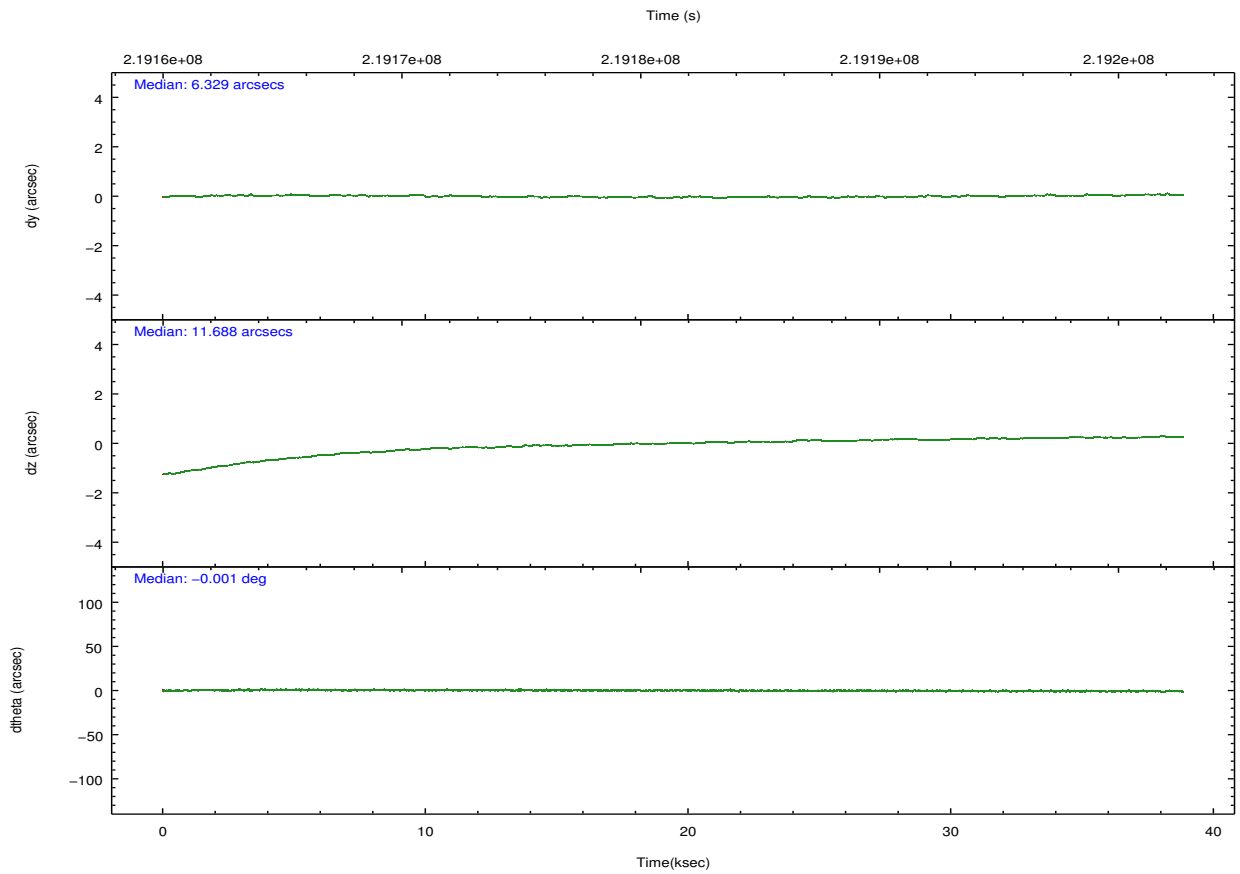
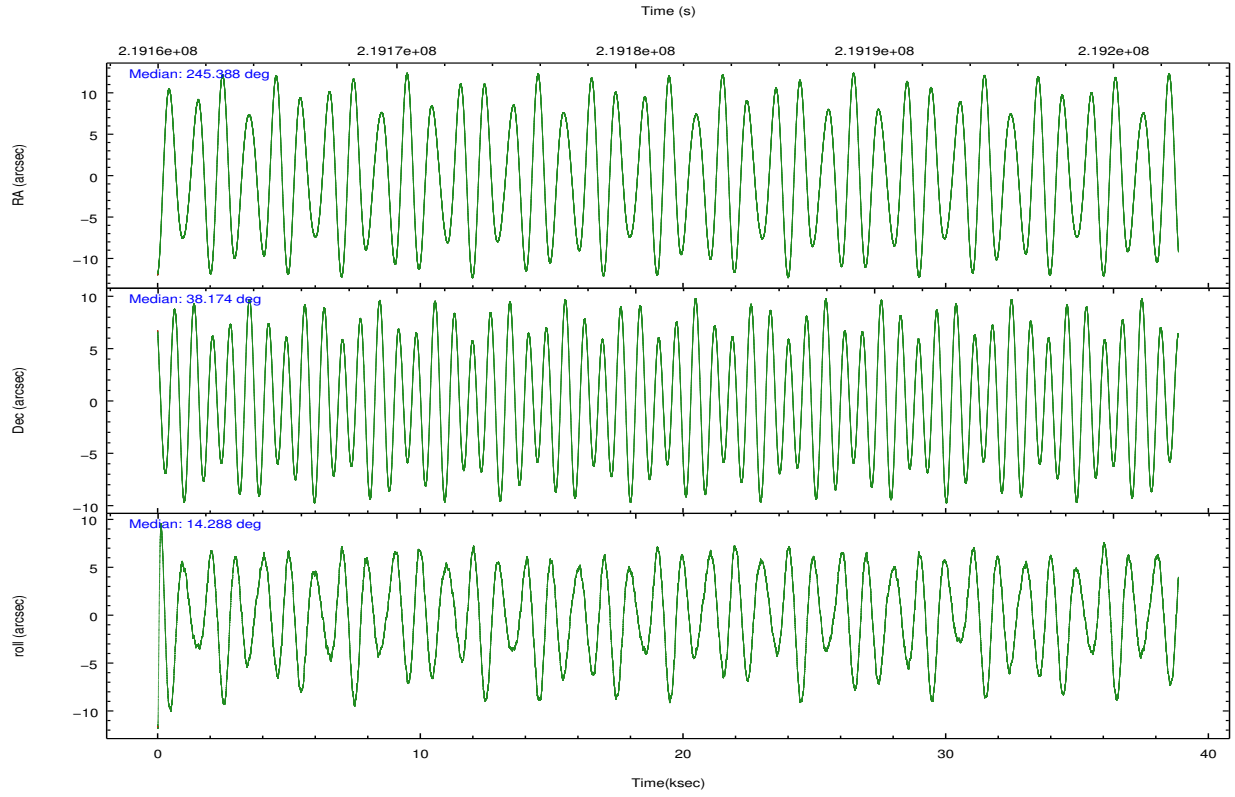
	ccd 0	ccd 1	ccd 2	ccd 3	ccd 6
level 1 events	226711	228912	250041	247534	243099
rejected events	202250	201992	225439	217626	219085
rejected %	89%	88%	90%	87%	90%

	ccd 0	ccd 1	ccd 2	ccd 3	ccd 6
grade 0 events	8651	10083	9466	14305	8270
	3%	4%	3%	5%	3%
grade 1 events	120	123	134	154	106
	0%	0%	0%	0%	0%
grade 2 events	5753	5591	5542	5492	5237
	2%	2%	2%	2%	2%
grade 3 events	2808	3037	2587	2809	2666
	1%	1%	1%	1%	1%
grade 4 events	2568	2905	2630	2718	2707
	1%	1%	1%	1%	1%
grade 5 events	8376	8910	7690	9430	9452
	3%	3%	3%	3%	3%
grade 6 events	4683	5305	4379	4586	5140
	2%	2%	1%	1%	2%
grade 7 events	193752	192958	217613	208040	209521
	85%	84%	87%	84%	86%

2.2 Compared Parameters

Parameter	Planned	Actual	Parameter	Planned	Actual
Instrument	ACIS	ACIS	Obspar format version number	7	7
Detector	ACIS-01236	ACIS-01236	Obspar file type	PREDICTED	ACTUAL
Grating	NONE	NONE	Obspar update status	NONE	UPDATED
Data mode	VFAINT	VFAINT	Number of optional ACIS chips dropped	0	0
Observation mode	POINTING	POINTING	On-chip summing requested	N	N
[deg] Pointing RA	245.363115	245.3879800076899	Subarray requested	NONE	NONE
[deg] Pointing Dec	38.154668	38.17387322392656	Alternating exposures requested	N	N
[deg] Pointing Roll	14.095919	14.28923561968807	[s] Primary exposure time	0.000000	3.1
[mm] SIM focus pos	-0.782348	-0.7809083437167272			
[mm] SIM defocus	0	0.001439871863259334			
[mm] SIM translation stage pos	-229.442463	-229.4438428438578			
[mm] SIM translation stage offset	-4.15	-4.148610159071865			
[s] Observation start time (MET)	219162783.184000	219161518.14509			
Observation start date	2004-12-11T14:31:59	2004-12-11T14:11:58			
[s] Observation end time (MET)	219200783.184000	219201598.20939			
Observation end date	2004-12-12T01:05:19	2004-12-12T01:19:58			
Read mode	TIMED	TIMED			

2.3 Aspect

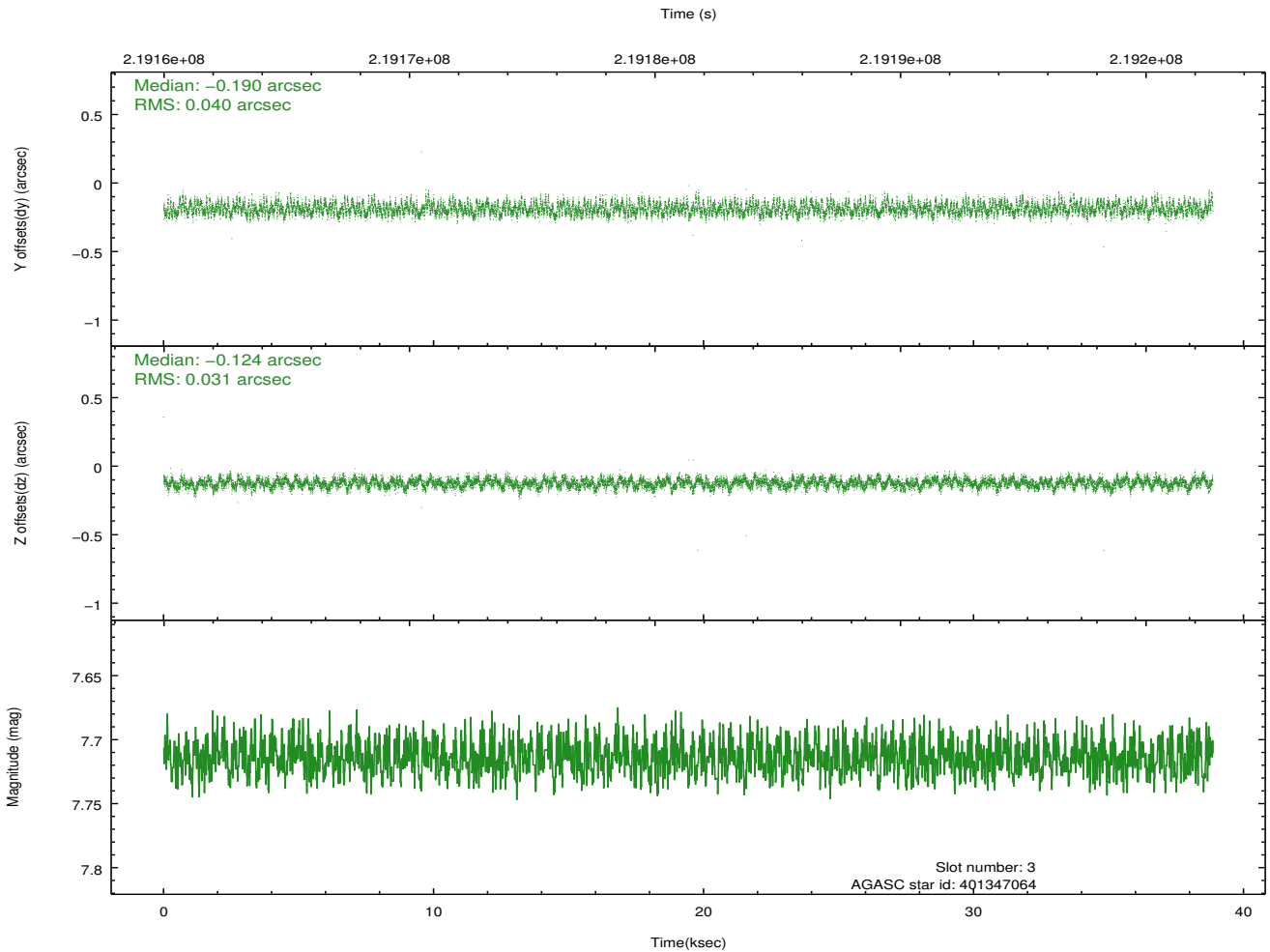
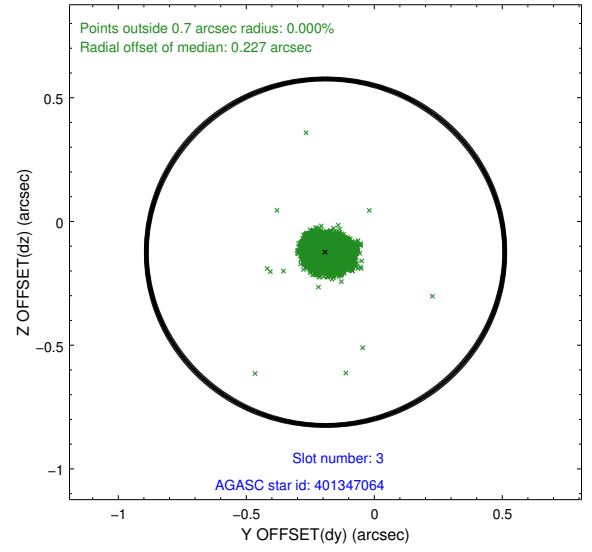
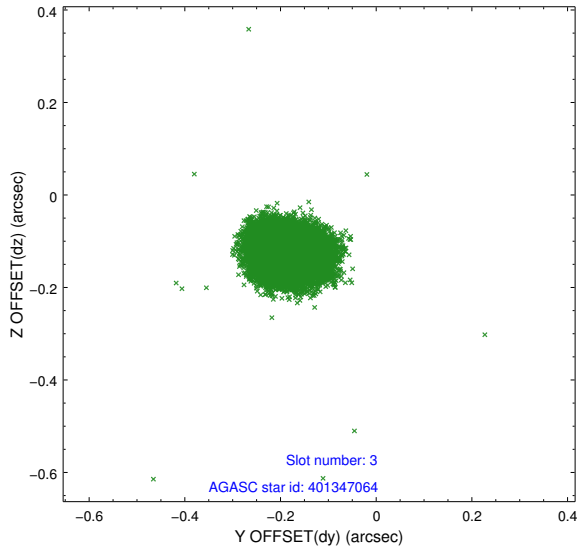


Slot Statistics

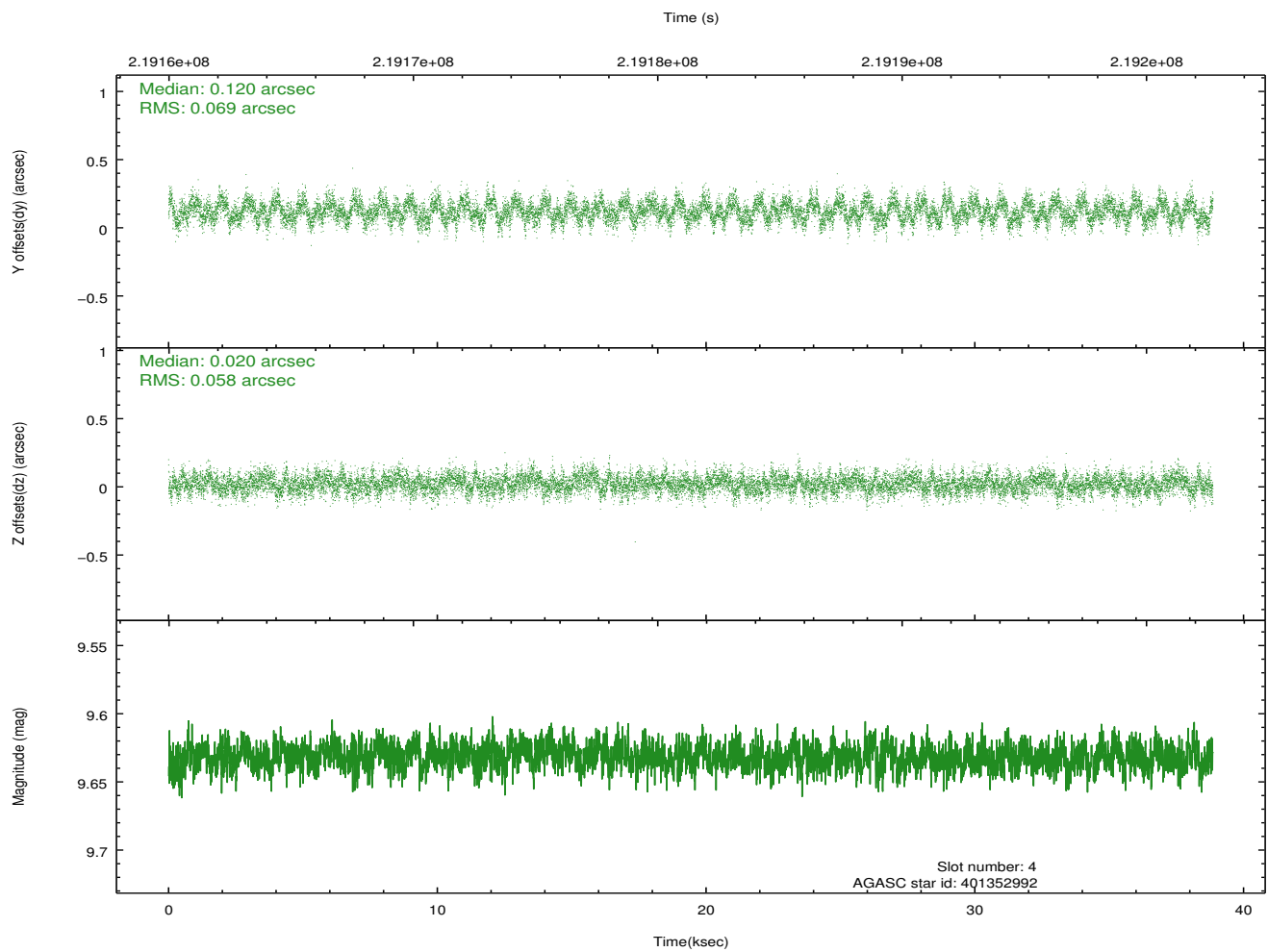
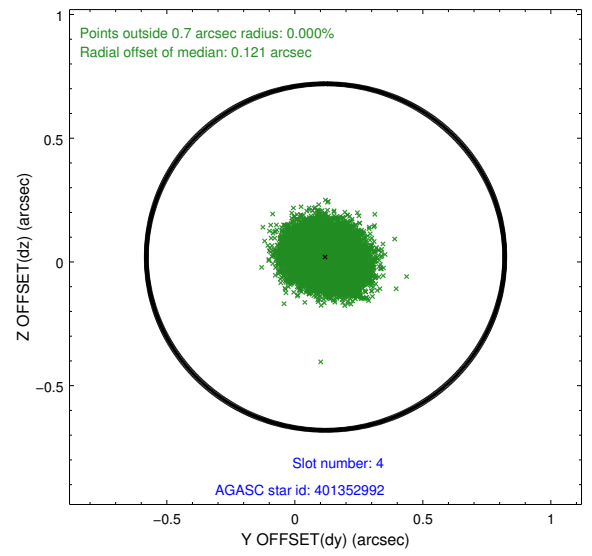
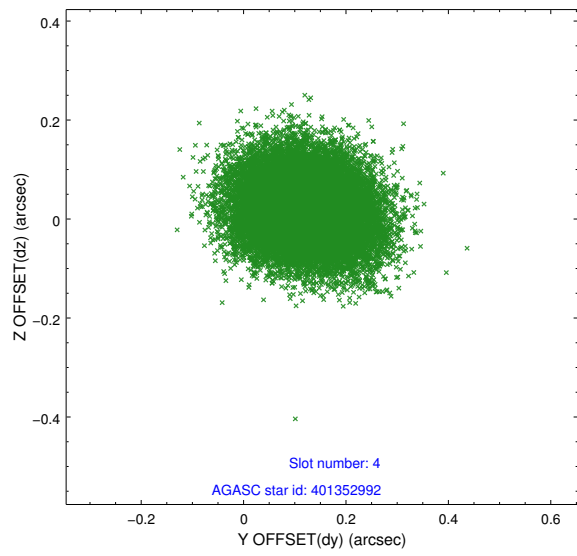
slot	status	id	mag	n_pts	med_dy	med_dz	dr1	dr2	ra	dec	mean_y	mean_z
0	FID	ACIS-I-1	7.24	9478	0.080	-0.014	0.013	0.025	0.000000	0.000000	933.35	-920.24
1	FID	ACIS-I-5	7.22	9479	-0.200	0.092	0.008	0.013	0.000000	0.000000	-1814.98	977.40
2	FID	ACIS-I-6	7.25	9479	0.029	-0.008	0.010	0.028	0.000000	0.000000	398.88	1621.78
3	GUIDE	401347064	7.71	18956	-0.190	-0.124	0.054	0.084	245.989801	38.641750	2137.51	1277.48
4	GUIDE	401352992	9.63	18946	0.120	0.020	0.096	0.156	244.701659	37.819192	-2116.50	-706.62
5	GUIDE	401357120	7.06	18956	-0.022	0.084	0.049	0.078	244.752378	37.765715	-2025.46	-929.35
6	GUIDE	401357328	9.00	18946	-0.012	0.072	0.079	0.130	246.205033	38.152914	2312.78	-575.92
7	GUIDE	401357888	8.51	18953	0.099	-0.052	0.067	0.109	244.567474	38.275306	-2072.39	978.22

2.4 Star Slots

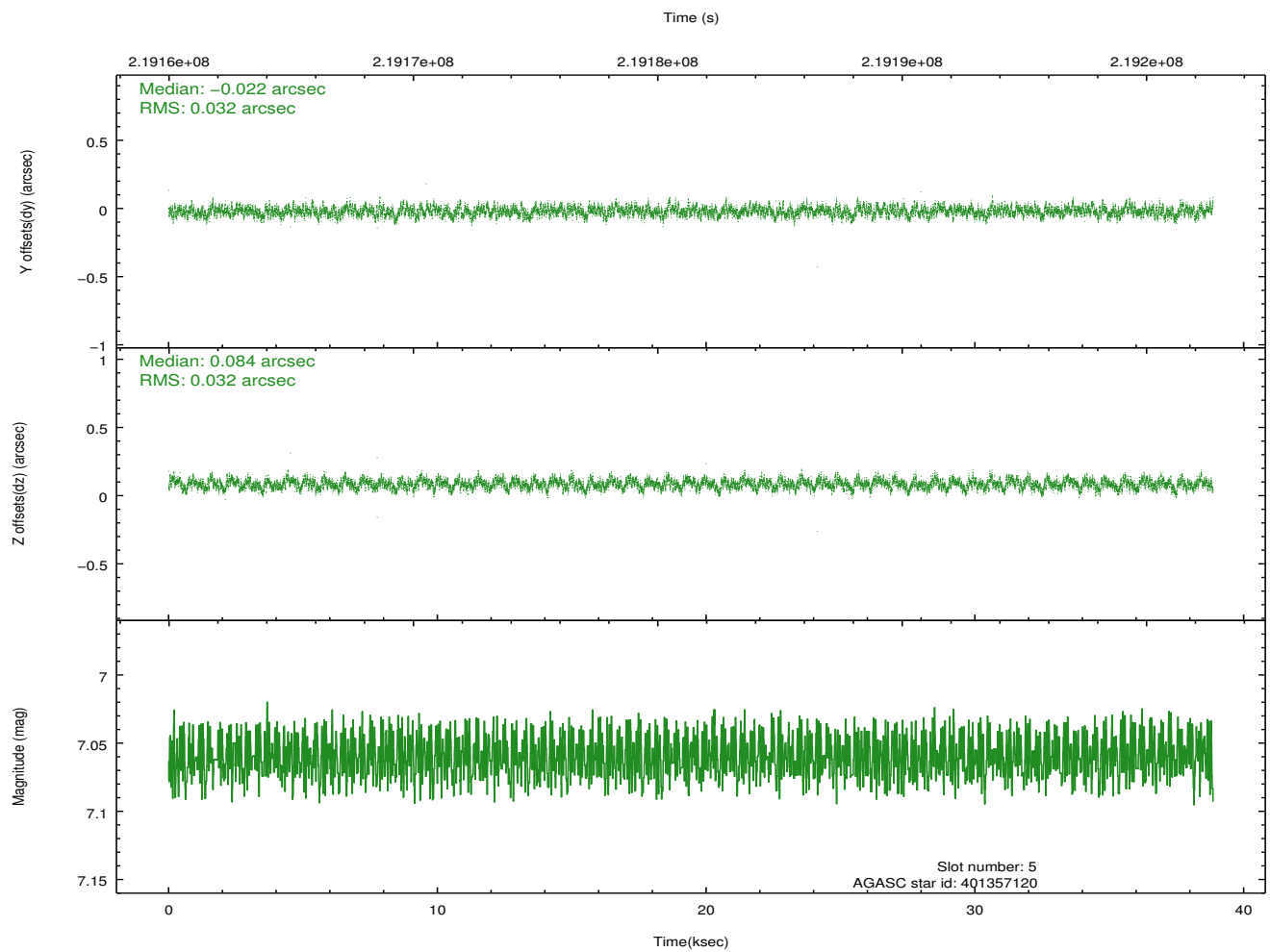
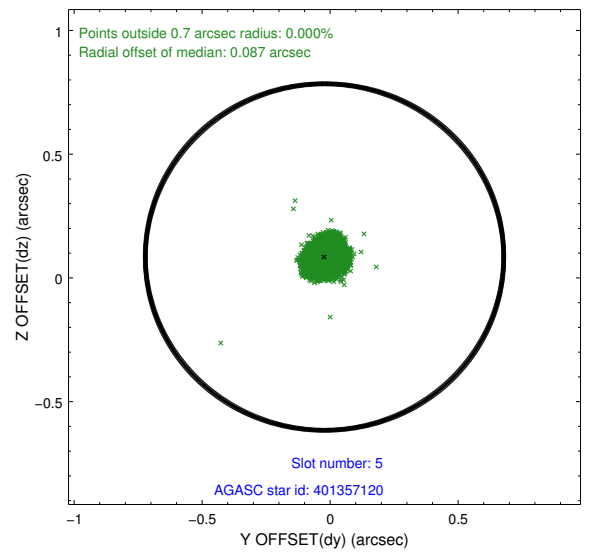
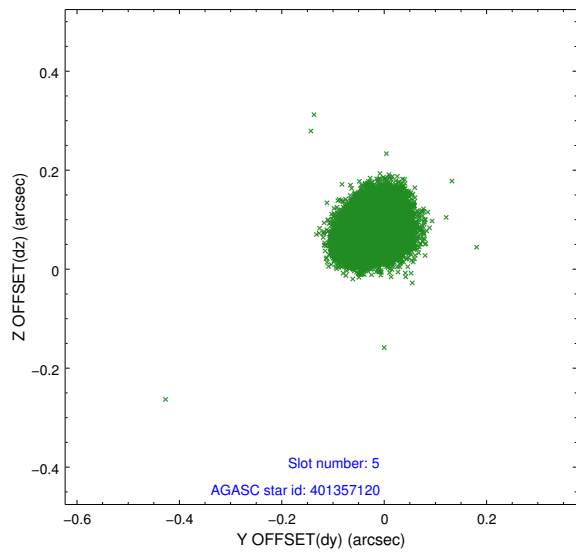
2.4.1 Slot 3



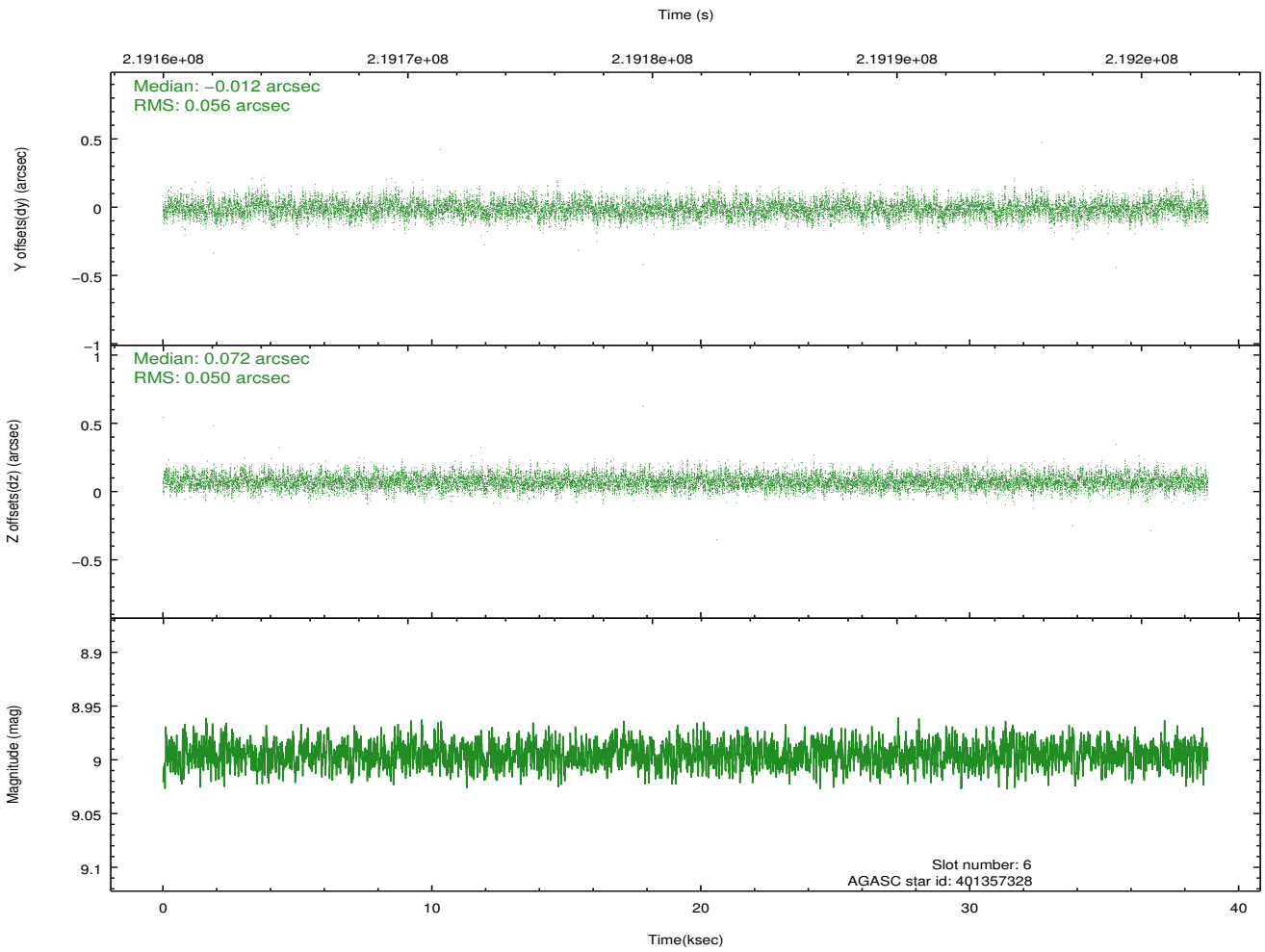
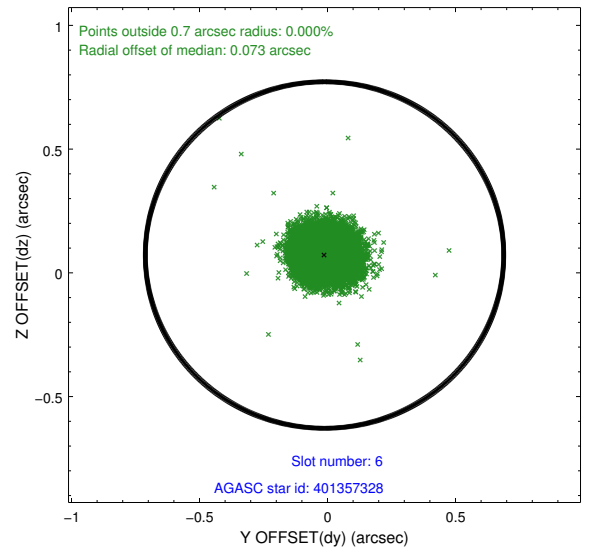
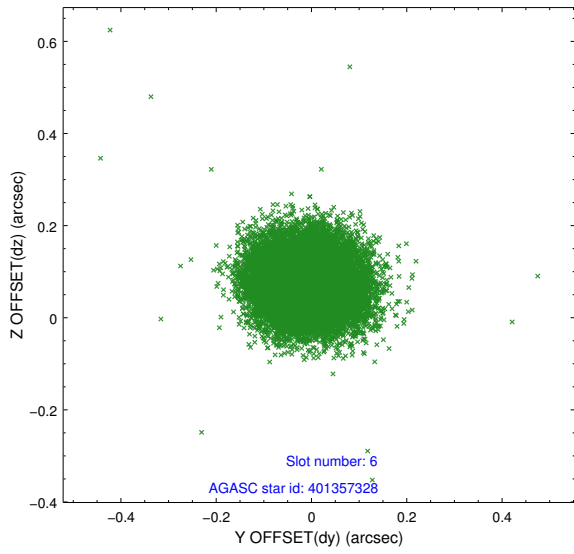
2.4.2 Slot 4



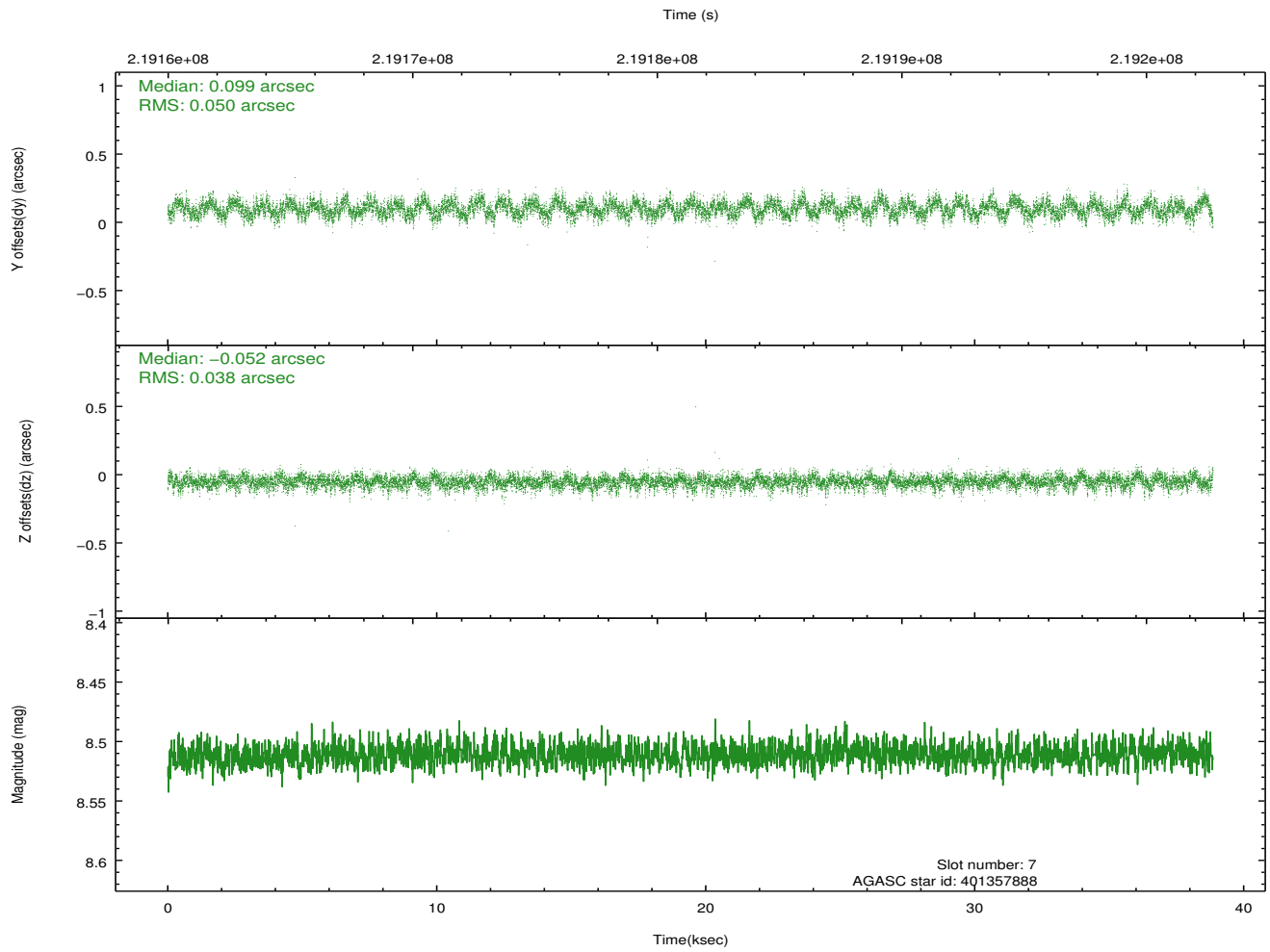
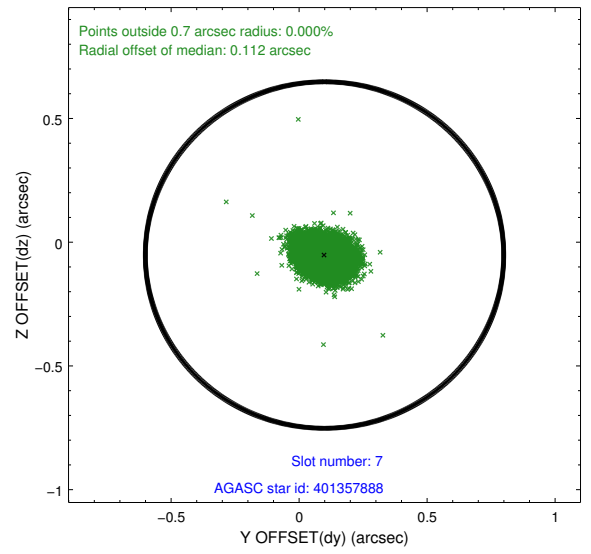
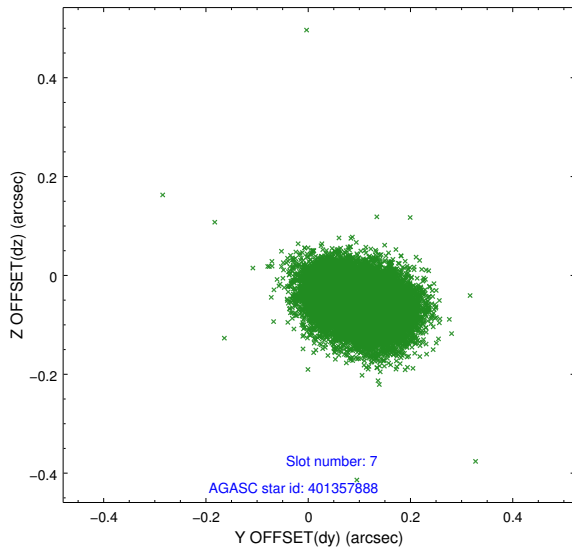
2.4.3 Slot 5



2.4.4 Slot 6

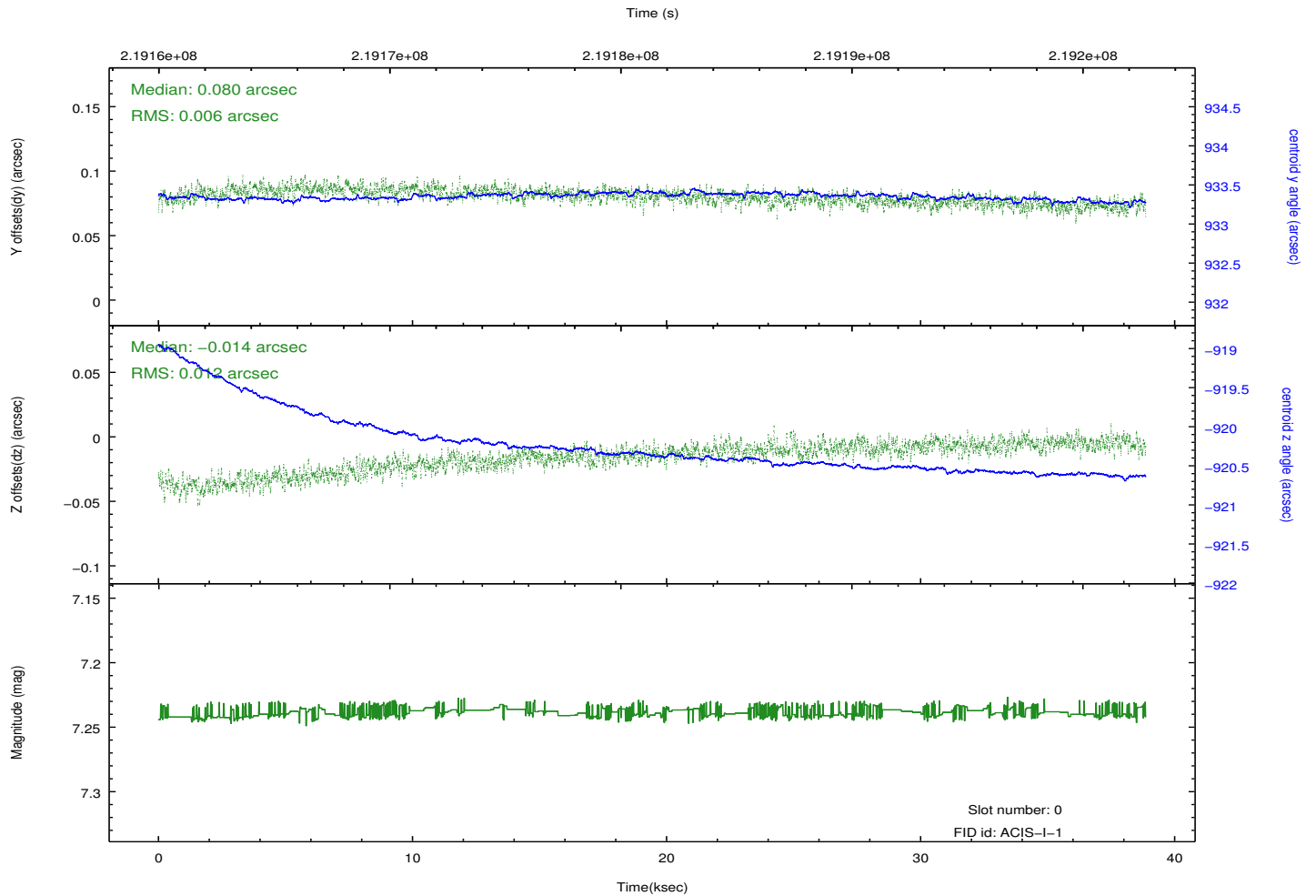
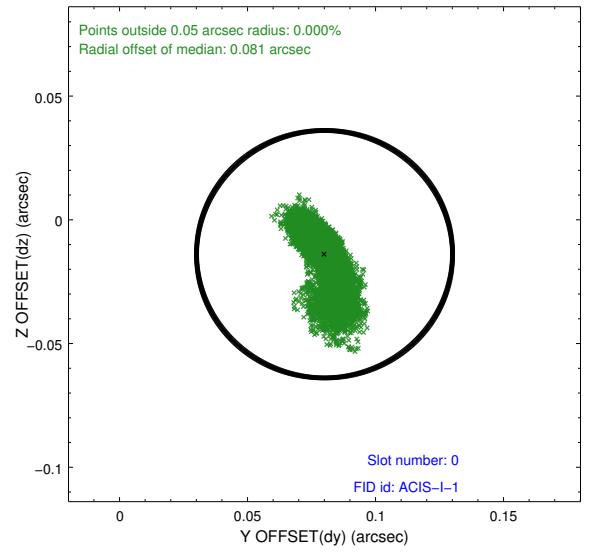
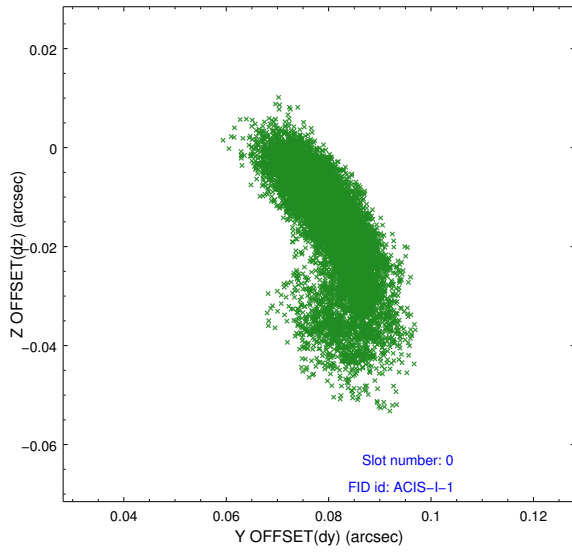


2.4.5 Slot 7

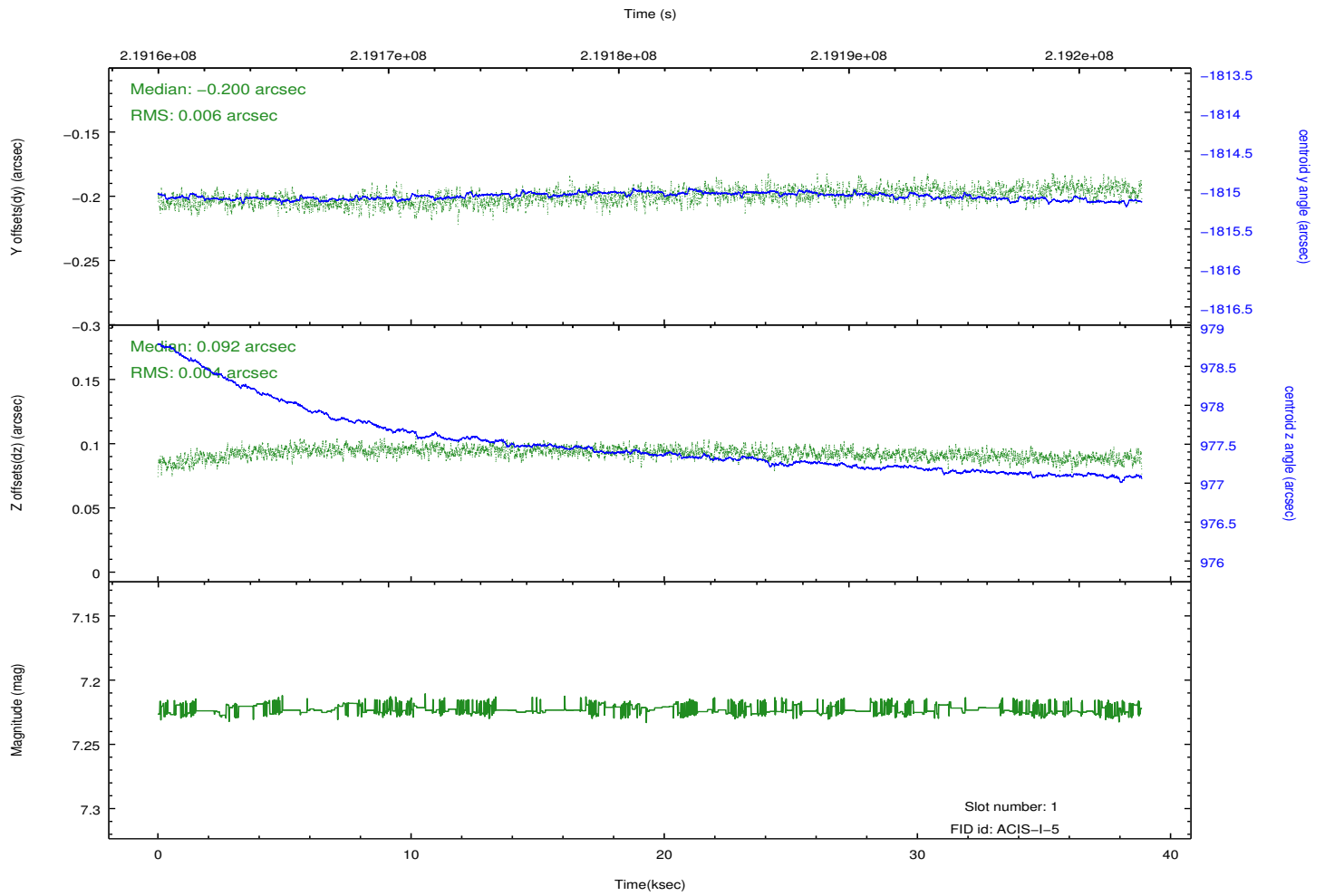
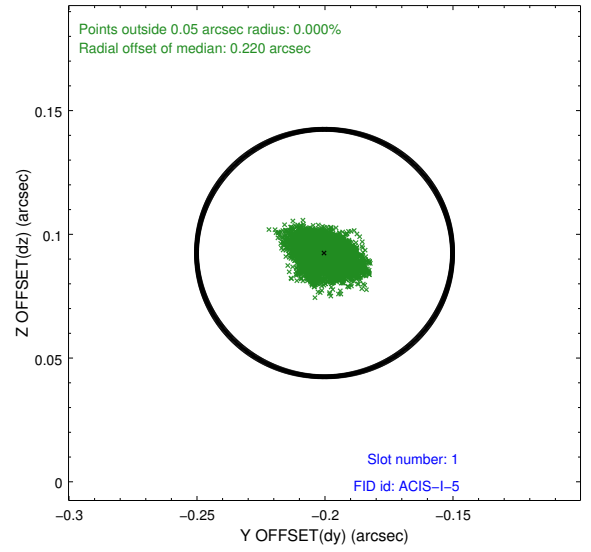
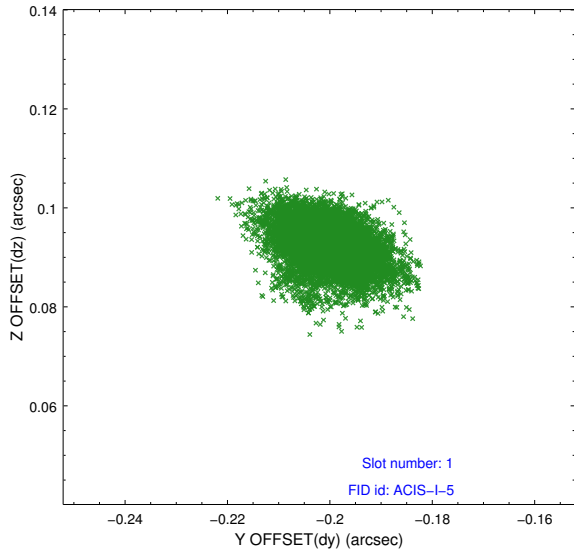


2.5 FID Slots

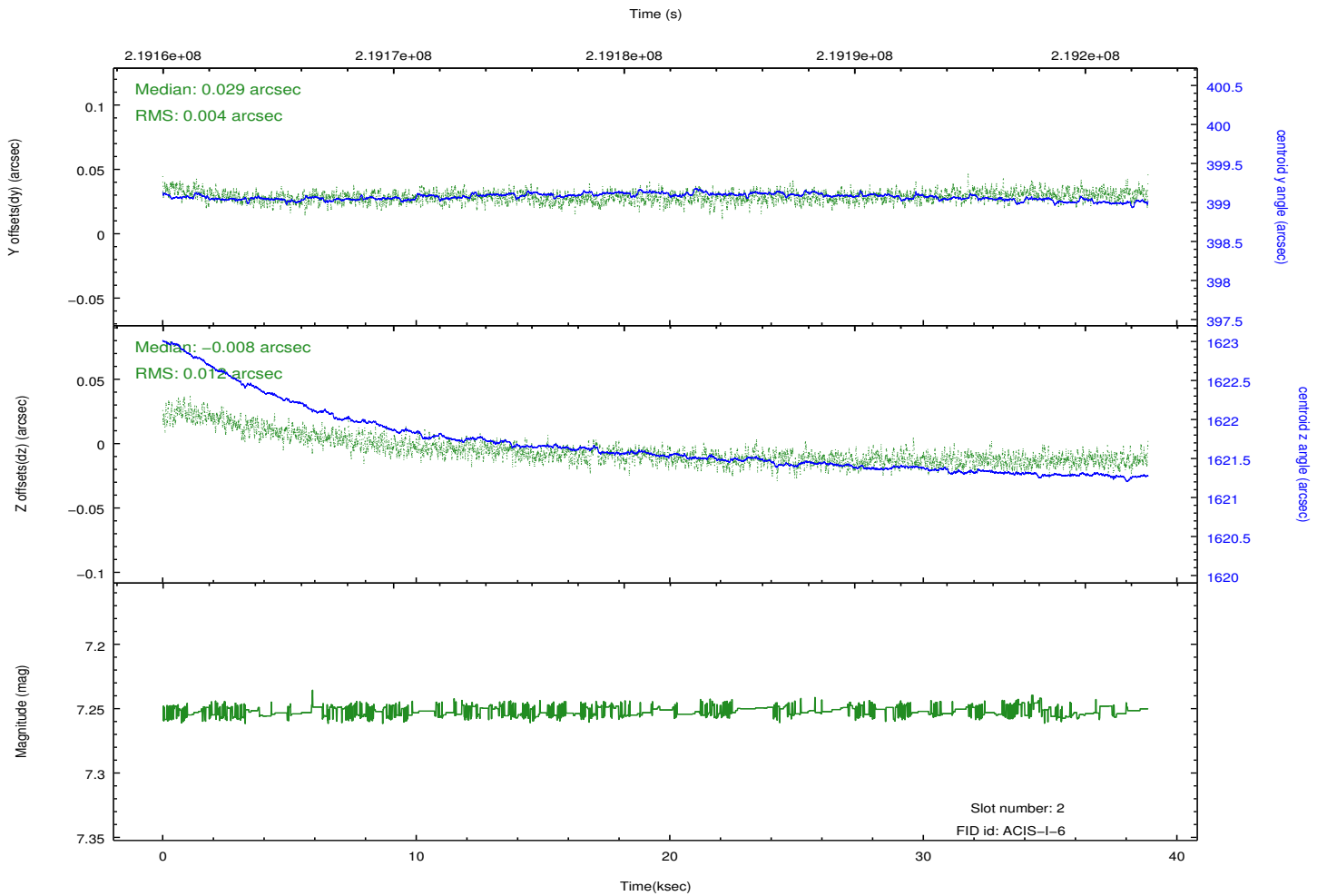
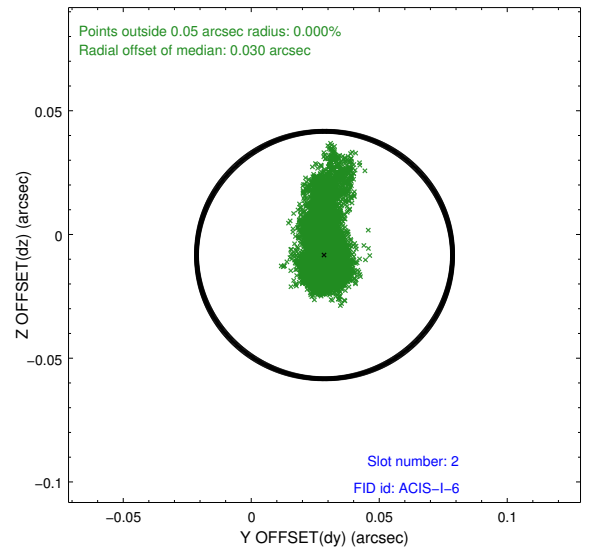
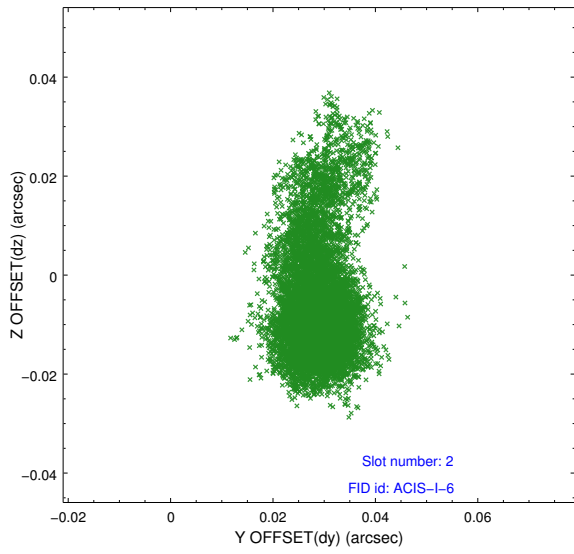
2.5.1 Slot 0



2.5.2 Slot 1



2.5.3 Slot 2



A Summary

A.1 Status

V&V Scientist	Jen Lauer
V&V Date (YYYY-MM-DD)	2013.01.04
V&V Edition	1
V&V Disposition and Status	OK
V&V Charge Time	38.04625

A.2 Comments