

V&V Reference Report

L2 ASCDS Version : 8.5.1.1

Observation 6269 - L2 Version 3
Chandra X-Ray Center

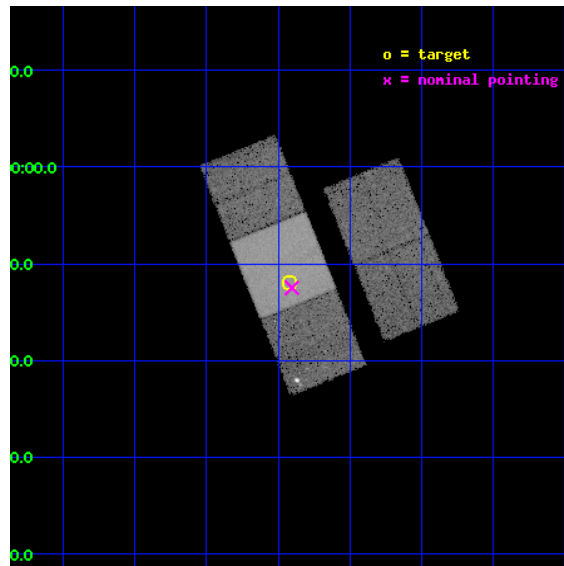
L2 Processing Date : Dec 22 2012

Contents

1	Front	2
2	OBI	3
2.1	OBI	3
2.1.1	Images	3
2.1.2	Bias	3
2.1.3	Parameters	4
2.1.4	Events	4
2.2	Compared Parameters	5
2.3	Aspect	6
2.4	Star Slots	9
2.4.1	Slot 3	9
2.4.2	Slot 4	10
2.4.3	Slot 5	11
2.4.4	Slot 6	12
2.4.5	Slot 7	13
2.5	FID Slots	14
2.5.1	Slot 0	14
2.5.2	Slot 1	15
2.5.3	Slot 2	16
A	Summary	17
A.1	Status	17
A.2	Comments	17

1 Front

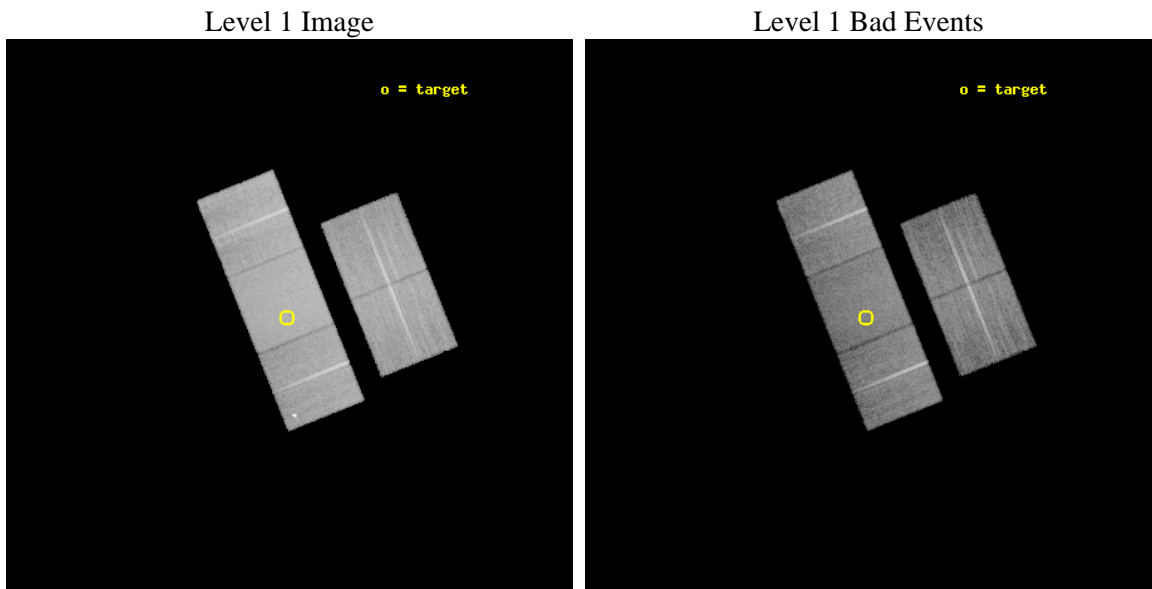
seq_num	500601	Sequence number
obs_id	6269	Observation id
title	GRB050412: The Darkest of the Dark Bursts	Proposal title
observer	Prof. Edo Berger	Principal investigator
object	GRB050412	Source name
dtcycle	0	
cycle	P	events from which exps? Prim/Second/Both
ra_targ	181.10625	Observer's specified target RA [deg]
dec_targ	-1.200056	Observer's specified target Dec [deg]
ra_nom	181.10111135325	Nominal RA [deg]
dec_nom	-1.2082735519612	Nominal Dec [deg]
roll_nom	248.08210923049	Nominal Roll [deg]
revision	3	Processing version of data
ontime	20184.099961162	Sum of GTIs [s]
livetime	19920.379835851	Livetime [s]
ontime2	20184.099961162	Sum of GTIs [s]
ontime3	20184.099961162	Sum of GTIs [s]
ontime6	20184.099961162	Sum of GTIs [s]
ontime7	20184.099961162	Sum of GTIs [s]
ontime8	20171.53597039	Sum of GTIs [s]
l2events	152997	Number of level 2 events



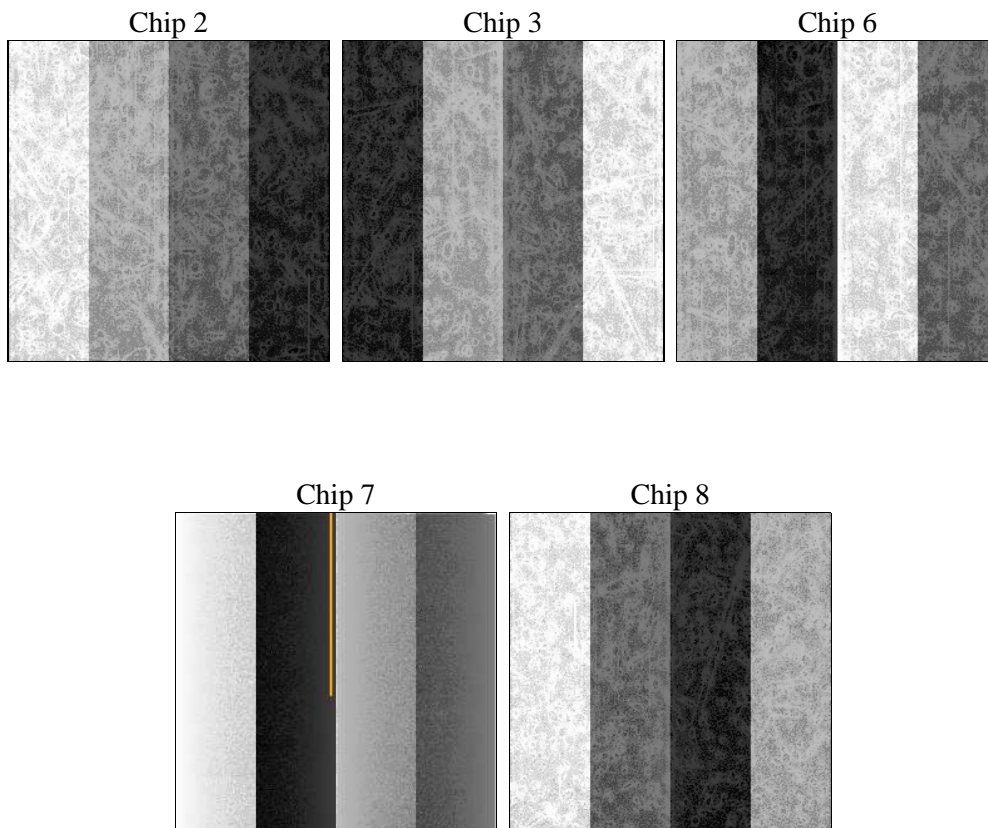
2 OBI

2.1 OBI

2.1.1 Images



2.1.2 Bias



2.1.3 Parameters

obi_num	0	Obi number	sched_exp_time	20000.000000	[s] Scheduled observation exposure time
ascdsver	8.5.1.1	Processing system revision	ontime	20184.099961162	Sum of GTIs [s]
caldbver	4.5.5	 	ontime2	20184.099961162	Sum of GTIs [s]
date	2012-12-22T14:17:24	Date and time of file creation	ontime3	20184.099961162	Sum of GTIs [s]
revision	3	Processing version of data	ontime6	20184.099961162	Sum of GTIs [s]
			ontime7	20184.099961162	Sum of GTIs [s]
			ontime8	20171.53597039	Sum of GTIs [s]
			l1events	895612	Number of level 1 events

2.1.4 Events

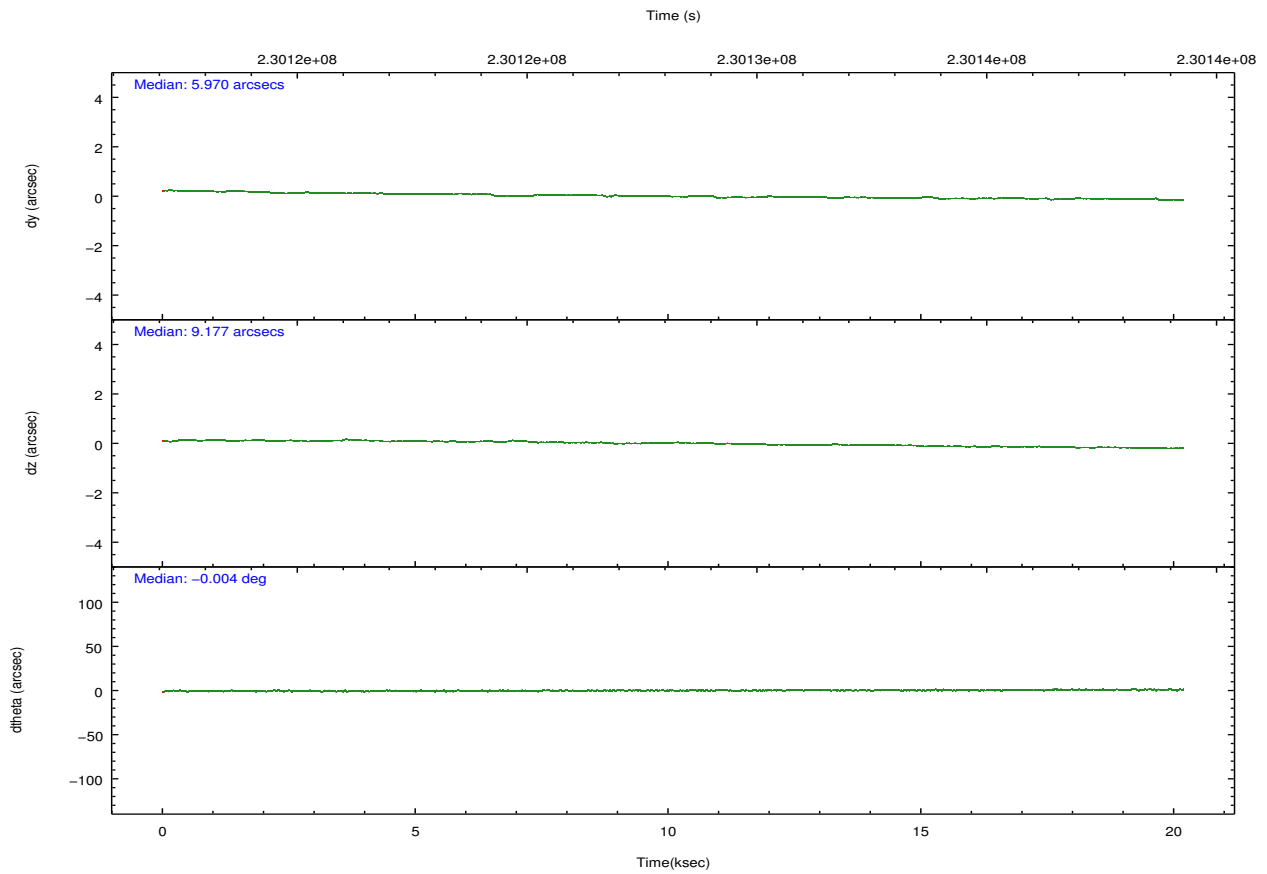
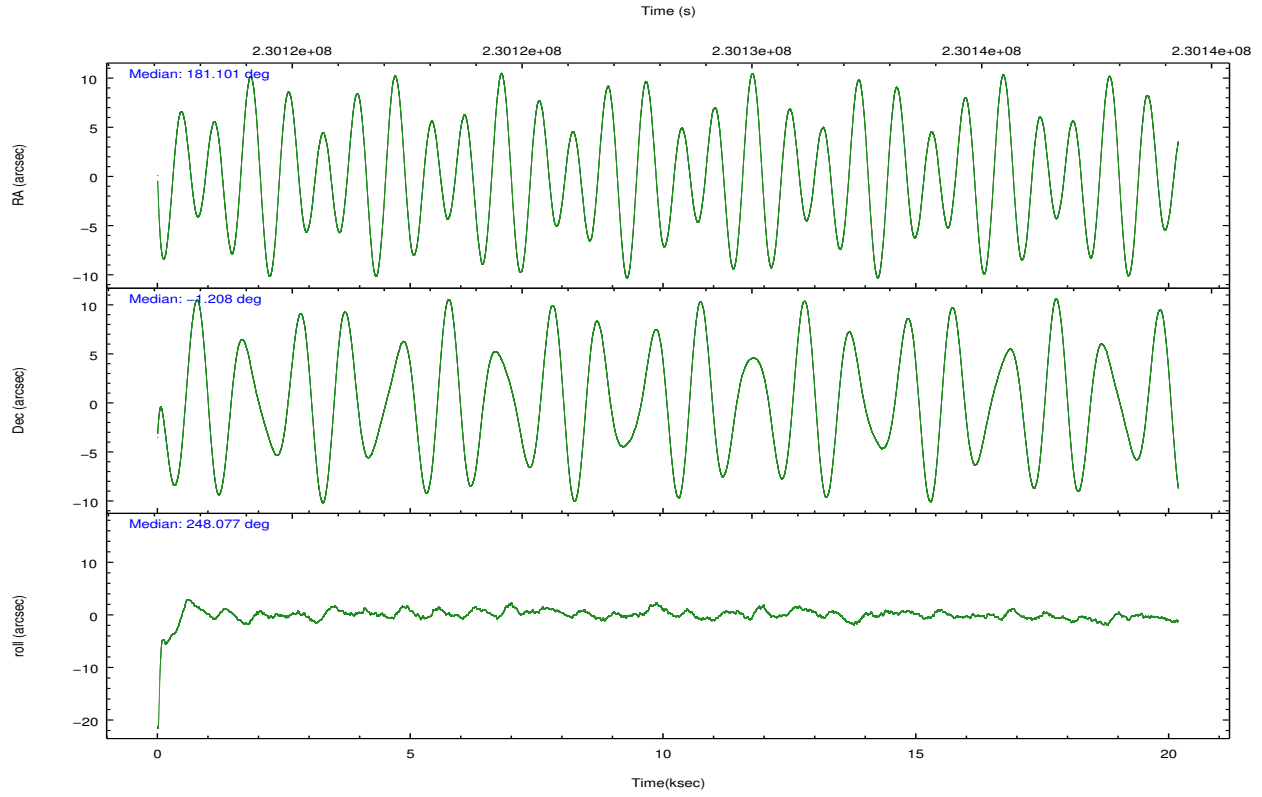
	ccd 2	ccd 3	ccd 6	ccd 7	ccd 8
level 1 events	159956	154254	163172	215620	202610
rejected events	141981	136361	141790	129045	160207
rejected %	88%	88%	86%	59%	79%

	ccd 2	ccd 3	ccd 6	ccd 7	ccd 8
grade 0 events	8052	7746	9596	7553	13425
	5%	5%	5%	3%	6%
grade 1 events	111	104	90	204	165
	0%	0%	0%	0%	0%
grade 2 events	3711	3558	4321	17571	9417
	2%	2%	2%	8%	4%
grade 3 events	1717	1789	2015	7663	4625
	1%	1%	1%	3%	2%
grade 4 events	1719	1788	1818	7422	4396
	1%	1%	1%	3%	2%
grade 5 events	6307	7042	7490	20324	9692
	3%	4%	4%	9%	4%
grade 6 events	3076	3320	3947	47819	11366
	1%	2%	2%	22%	5%
grade 7 events	135263	128907	133895	107064	149524
	84%	83%	82%	49%	73%

2.2 Compared Parameters

Parameter	Planned	Actual	Parameter	Planned	Actual
Instrument	ACIS	ACIS	Obspar format version number	7	7
Detector	ACIS-23678	ACIS-23678	Obspar file type	PREDICTED	ACTUAL
Grating	NONE	NONE	Obspar update status	NONE	UPDATED
Data mode	VFAINT	VFAINT	Number of optional ACIS chips dropped	0	0
Observation mode	POINTING	POINTING	On-chip summing requested	N	N
[deg] Pointing RA	181.096930	181.1011113532548	Subarray requested	NONE	NONE
[deg] Pointing Dec	-1.181351	-1.208273551961217	Alternating exposures requested	N	N
[deg] Pointing Roll	247.925405	248.082109230485	[s] Primary exposure time	0.000000	3.1
[mm] SIM focus pos	-0.684267	-0.6828225247311905			
[mm] SIM defocus	0	0.001444936568705701			
[mm] SIM translation stage pos	-190.132523	-190.1400660498719			
[mm] SIM translation stage offset	0	0.00754346686406393			
[s] Observation start time (MET)	230118274.184000	230117055.35312			
Observation start date	2005-04-17T09:43:30	2005-04-17T09:24:15			
[s] Observation end time (MET)	230138274.184000	230139164.09163			
Observation end date	2005-04-17T15:16:50	2005-04-17T15:32:44			
Read mode	TIMED	TIMED			

2.3 Aspect

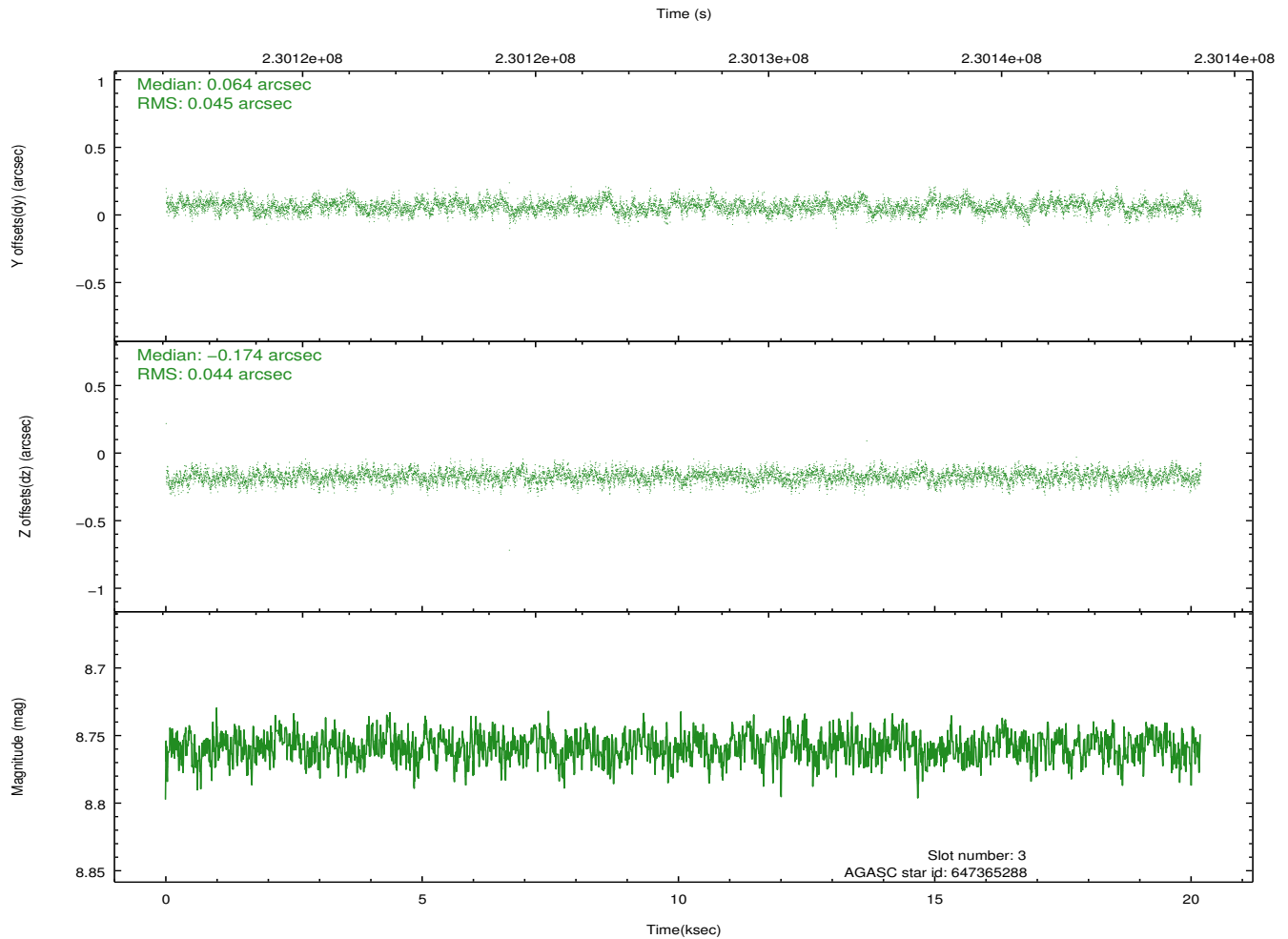
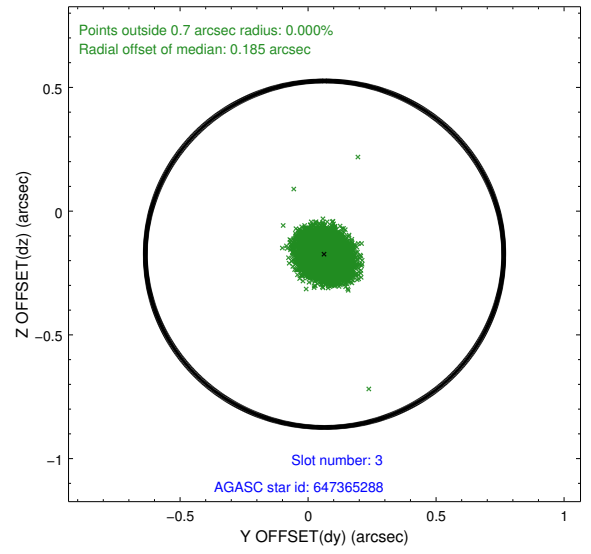
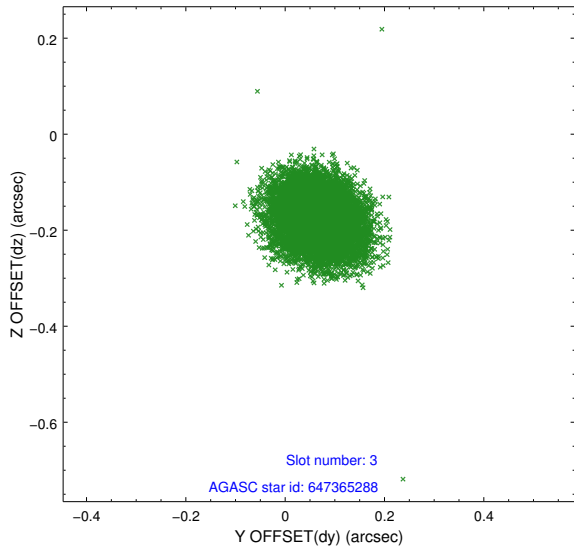


Slot Statistics

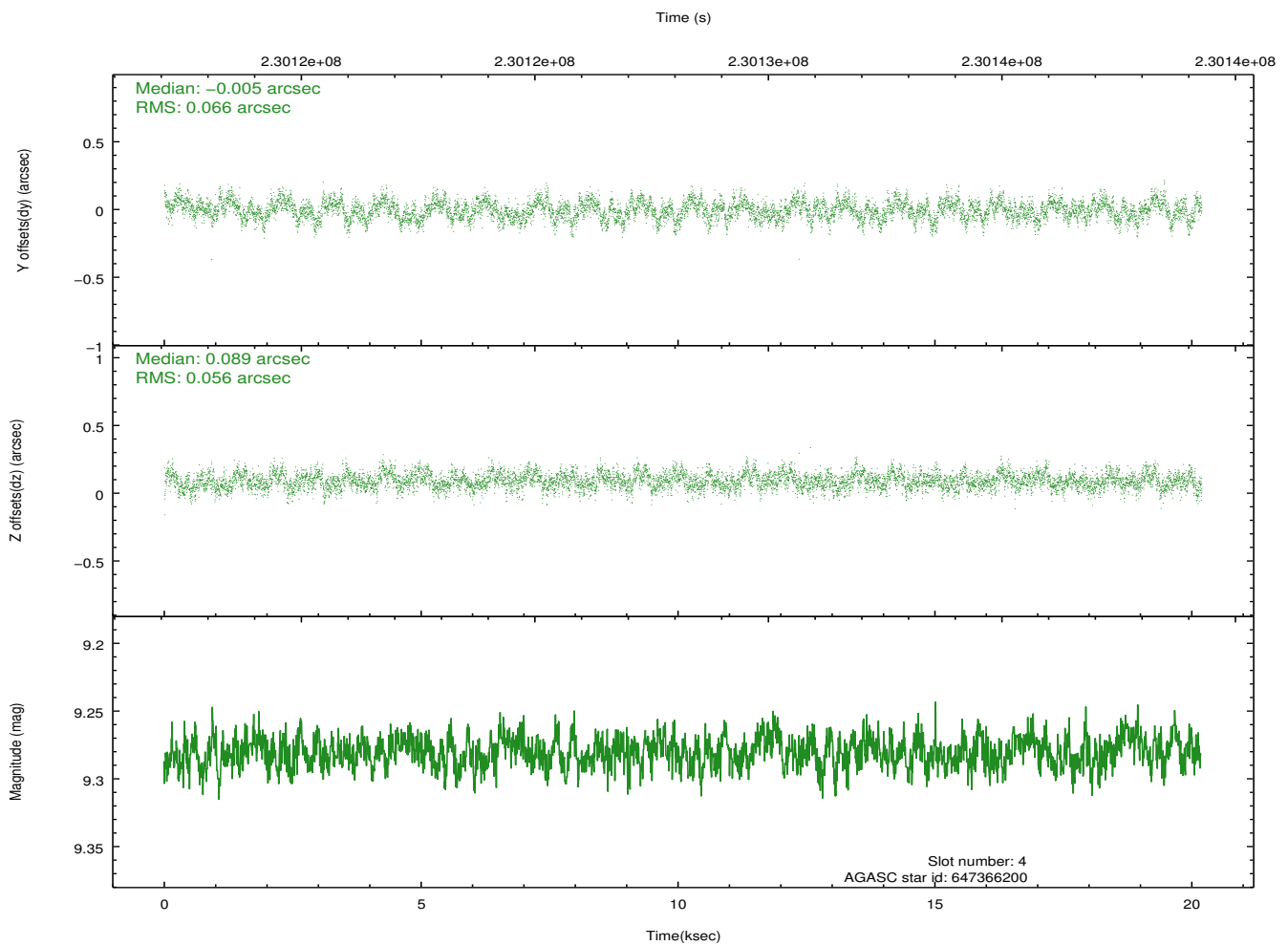
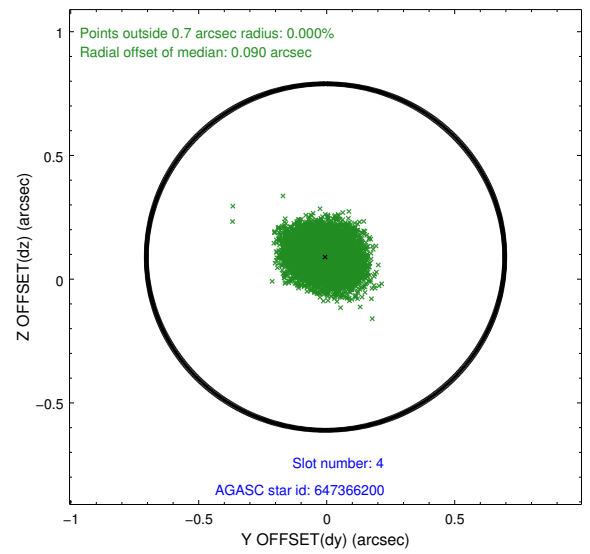
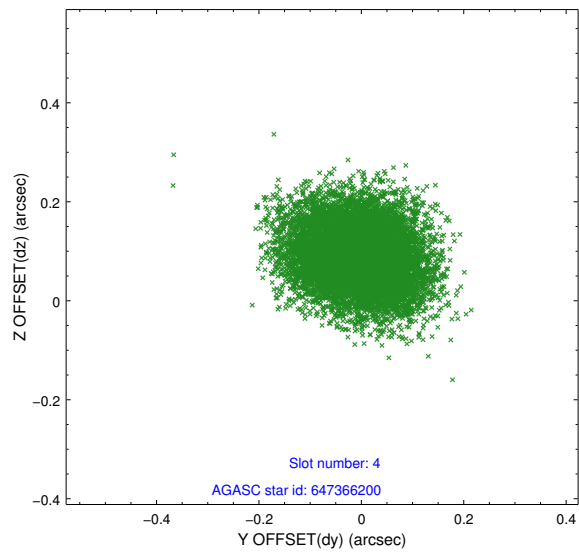
slot	status	id	mag	n_pts	med_dy	med_dz	dr1	dr2	ra	dec	mean_y	mean_z
0	FID	ACIS-S-2	7.10	4925	-0.064	-0.056	0.009	0.022	0.000000	0.000000	-758.76	-1730.45
1	FID	ACIS-S-4	7.21	4925	0.122	0.046	0.007	0.028	0.000000	0.000000	2154.61	177.96
2	FID	ACIS-S-5	7.23	4925	-0.089	0.019	0.008	0.023	0.000000	0.000000	-1811.40	171.79
3	GUIDE	647365288	8.76	9846	0.064	-0.174	0.066	0.108	181.193488	-1.160268	-200.54	293.55
4	GUIDE	647366200	9.28	9839	-0.005	0.089	0.093	0.151	181.366596	-0.971817	-1063.14	615.60
5	GUIDE	647368192	9.72	9834	-0.070	-0.021	0.090	0.148	180.906450	-0.862973	-804.18	-1065.96
6	GUIDE	647368208	9.46	9839	-0.100	0.022	0.083	0.135	180.711423	-1.434346	1365.95	-943.46
7	GUIDE	647369448	8.35	9845	0.116	0.086	0.067	0.107	180.814353	-1.629557	1878.12	-335.57

2.4 Star Slots

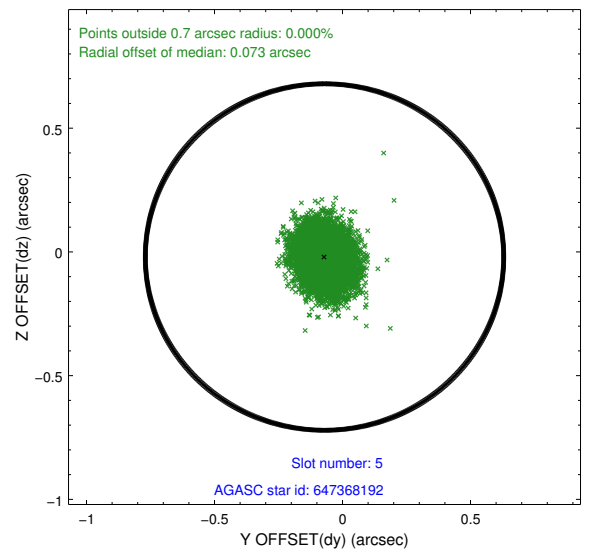
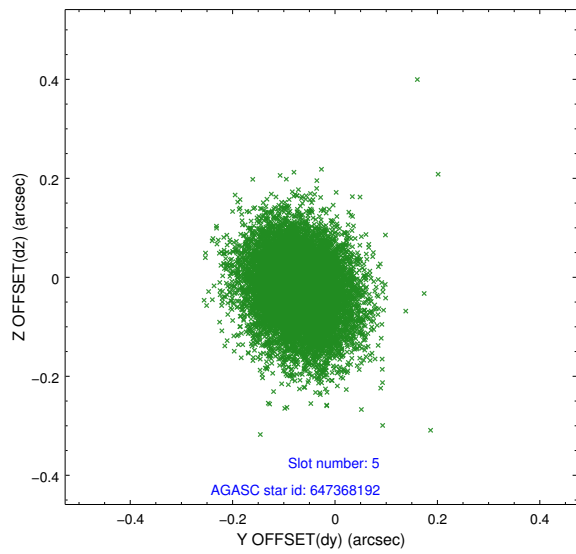
2.4.1 Slot 3



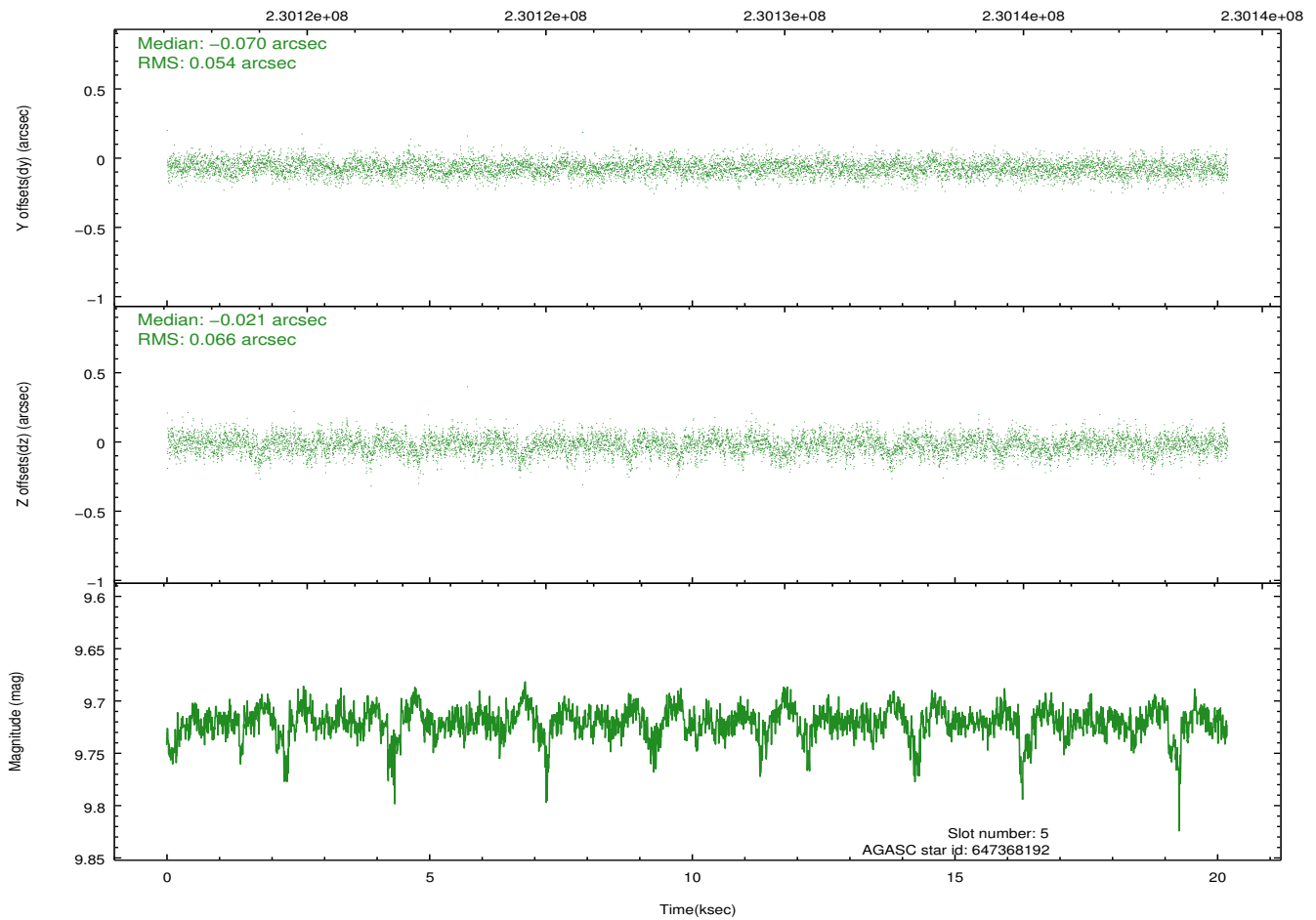
2.4.2 Slot 4



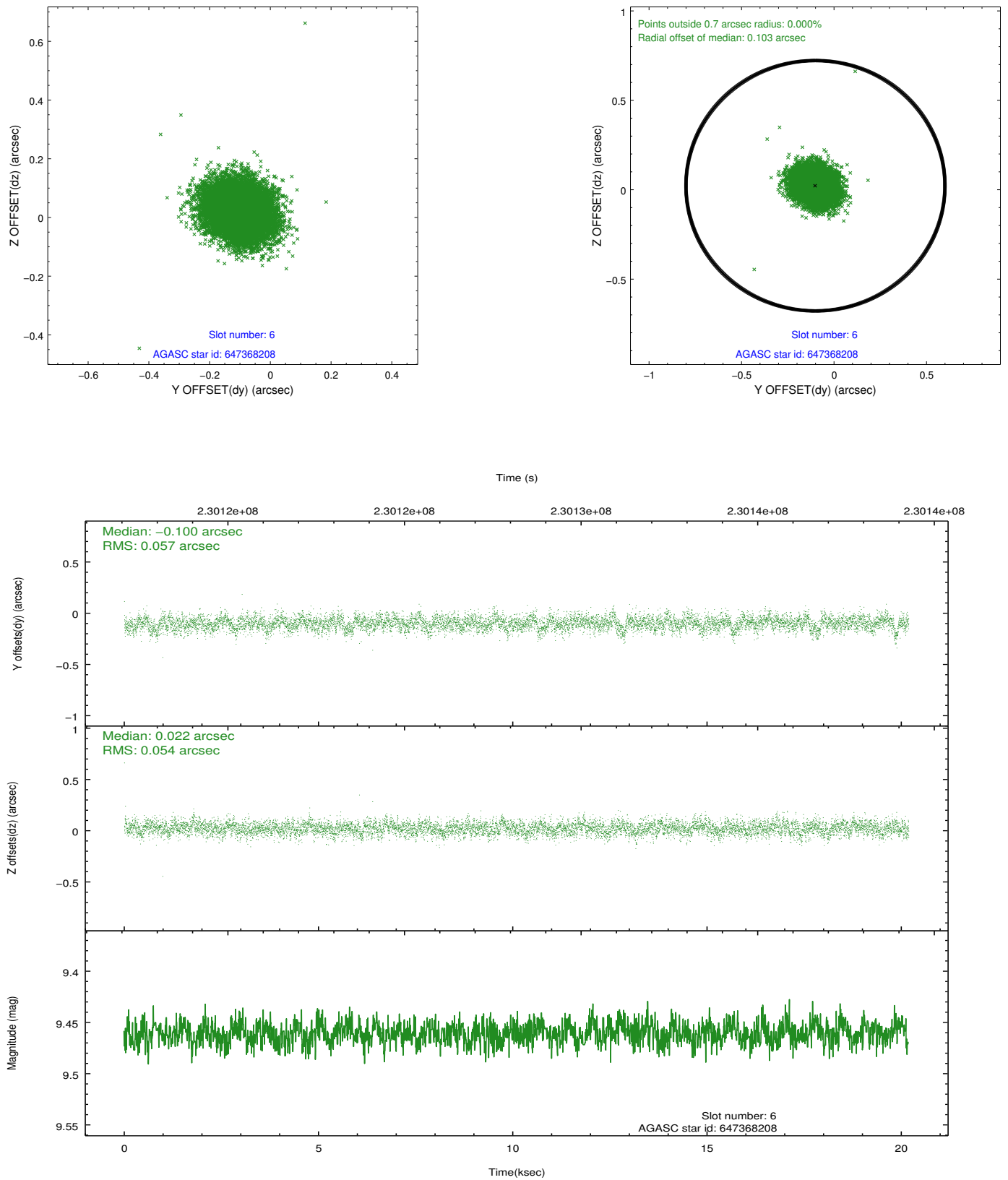
2.4.3 Slot 5



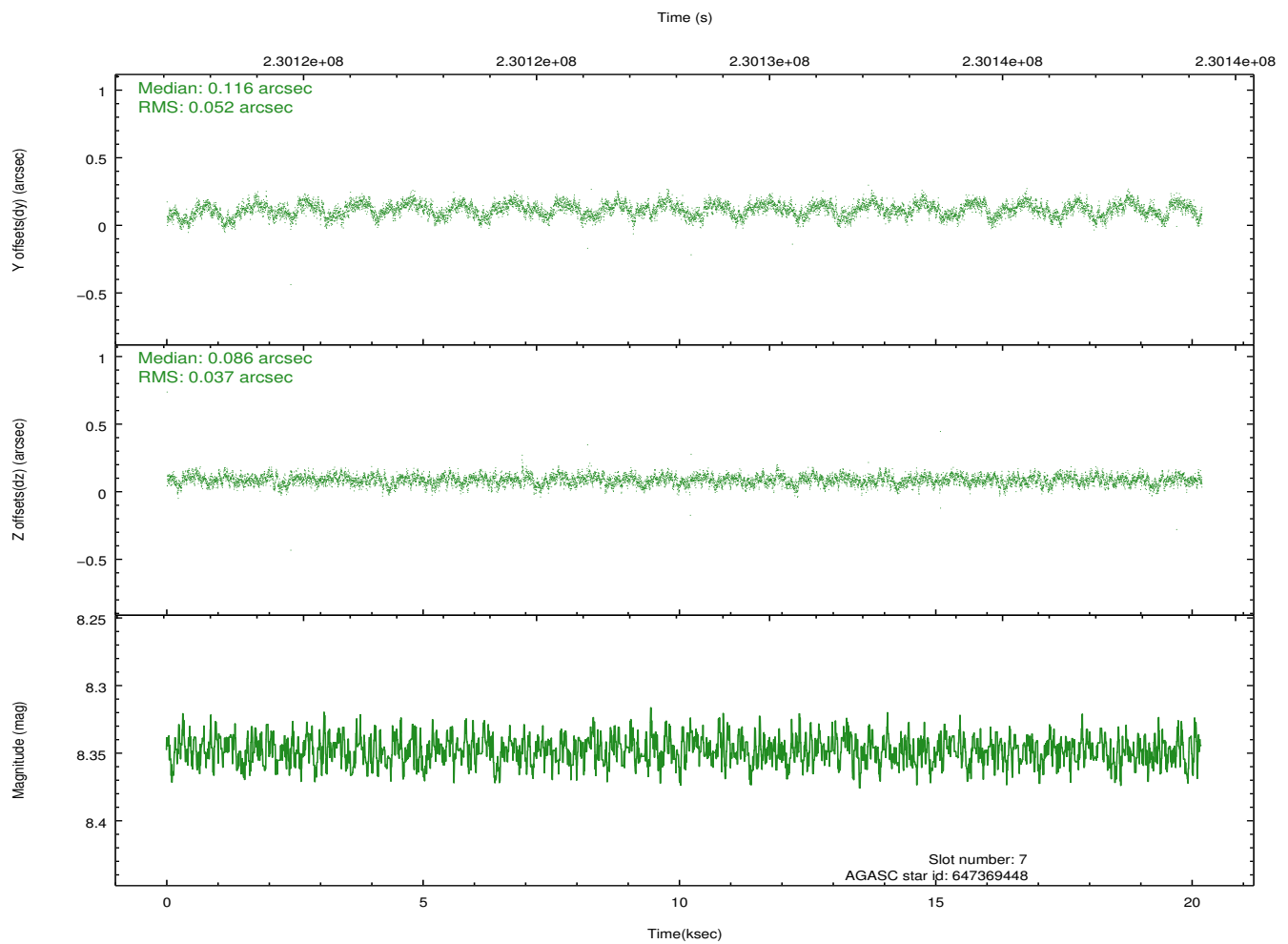
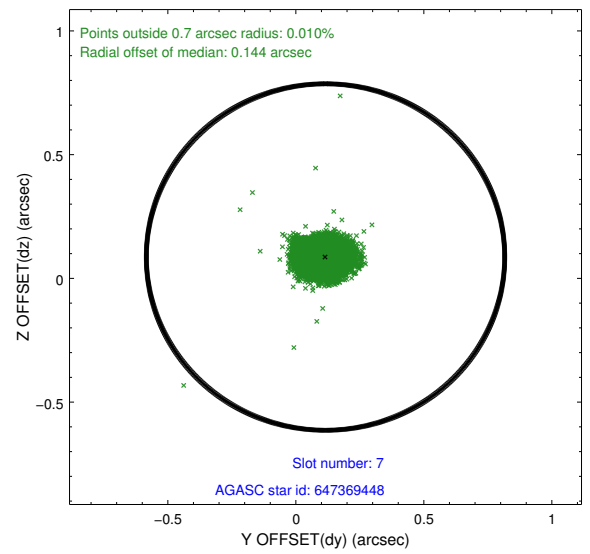
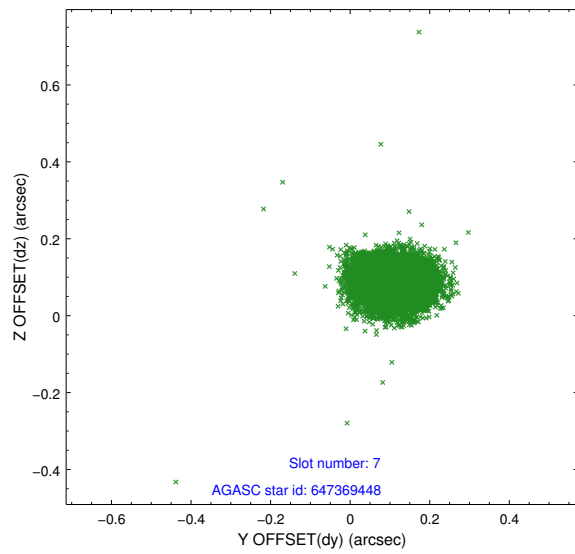
Time (s)



2.4.4 Slot 6

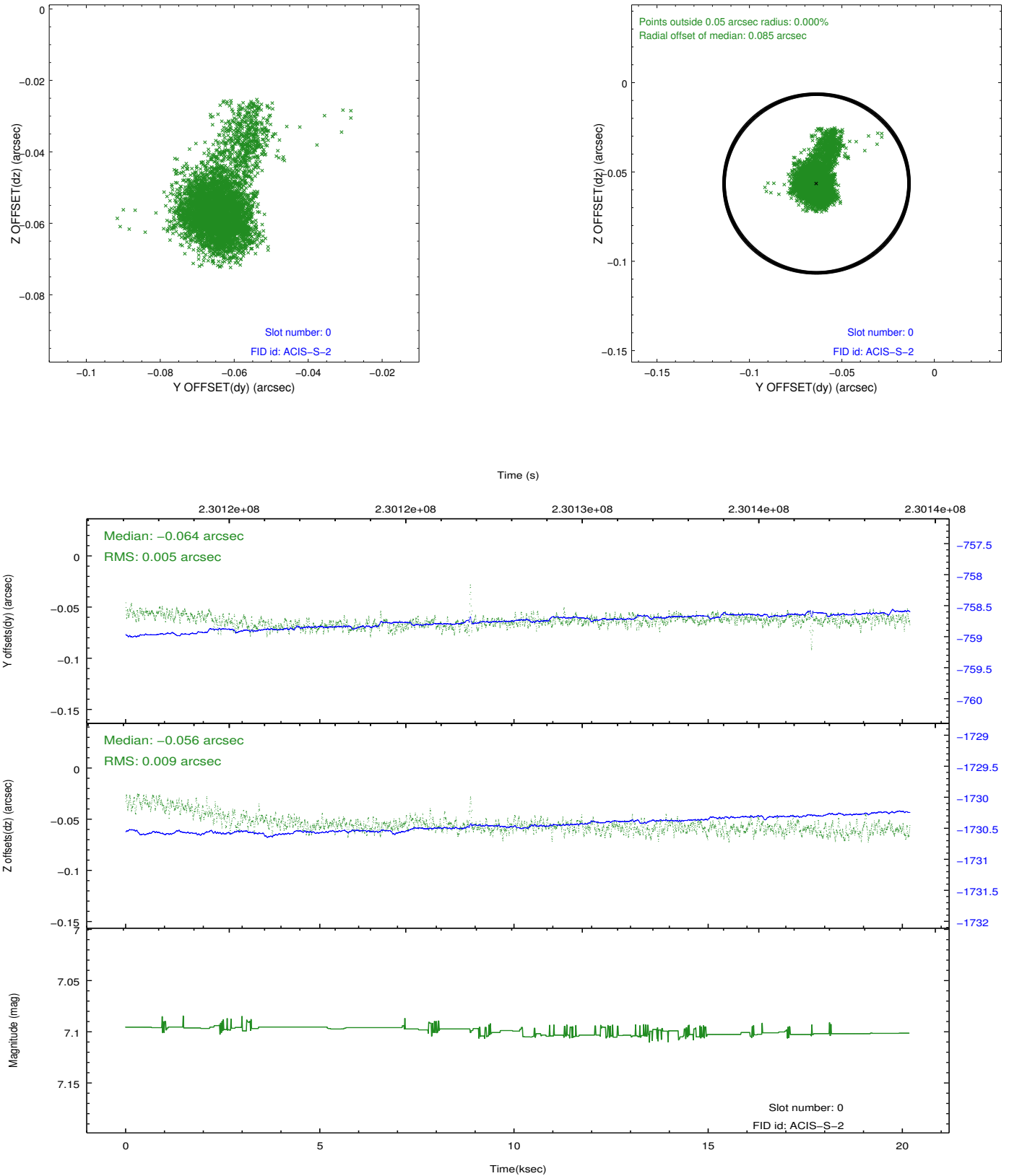


2.4.5 Slot 7

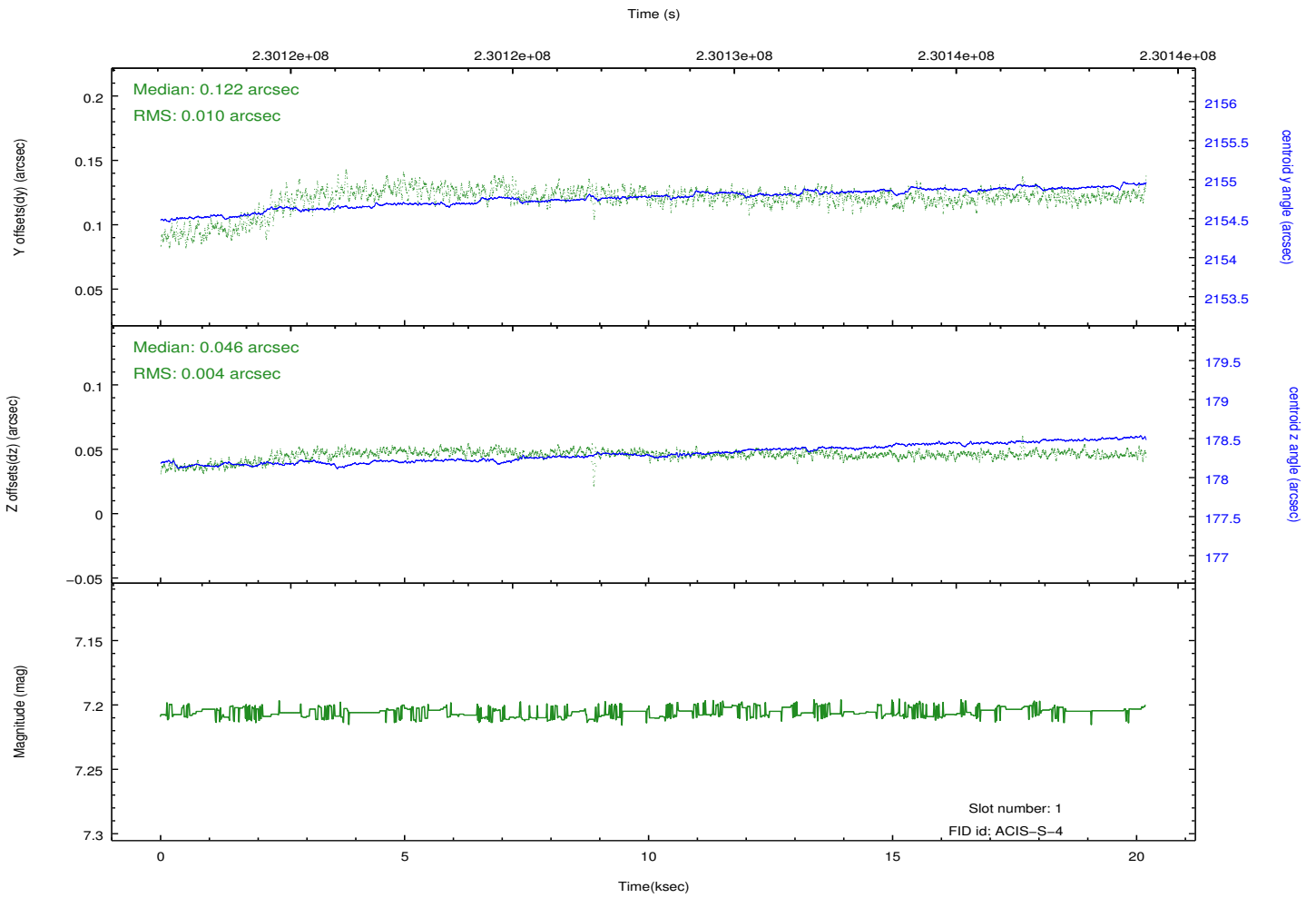
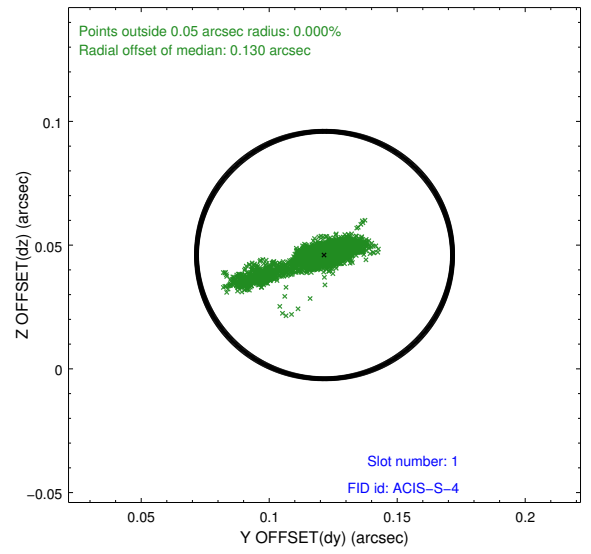
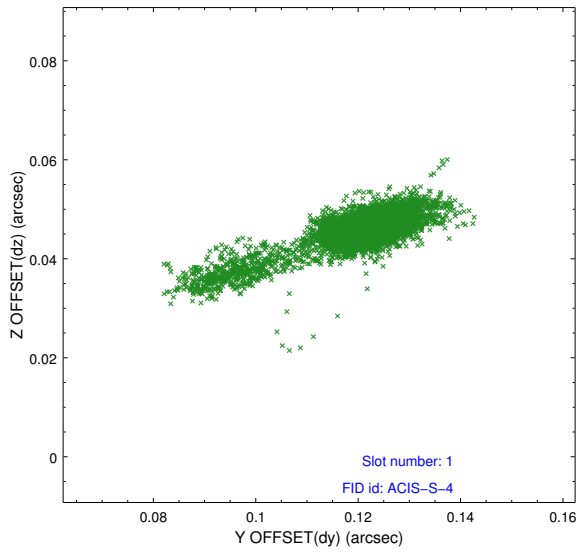


2.5 FID Slots

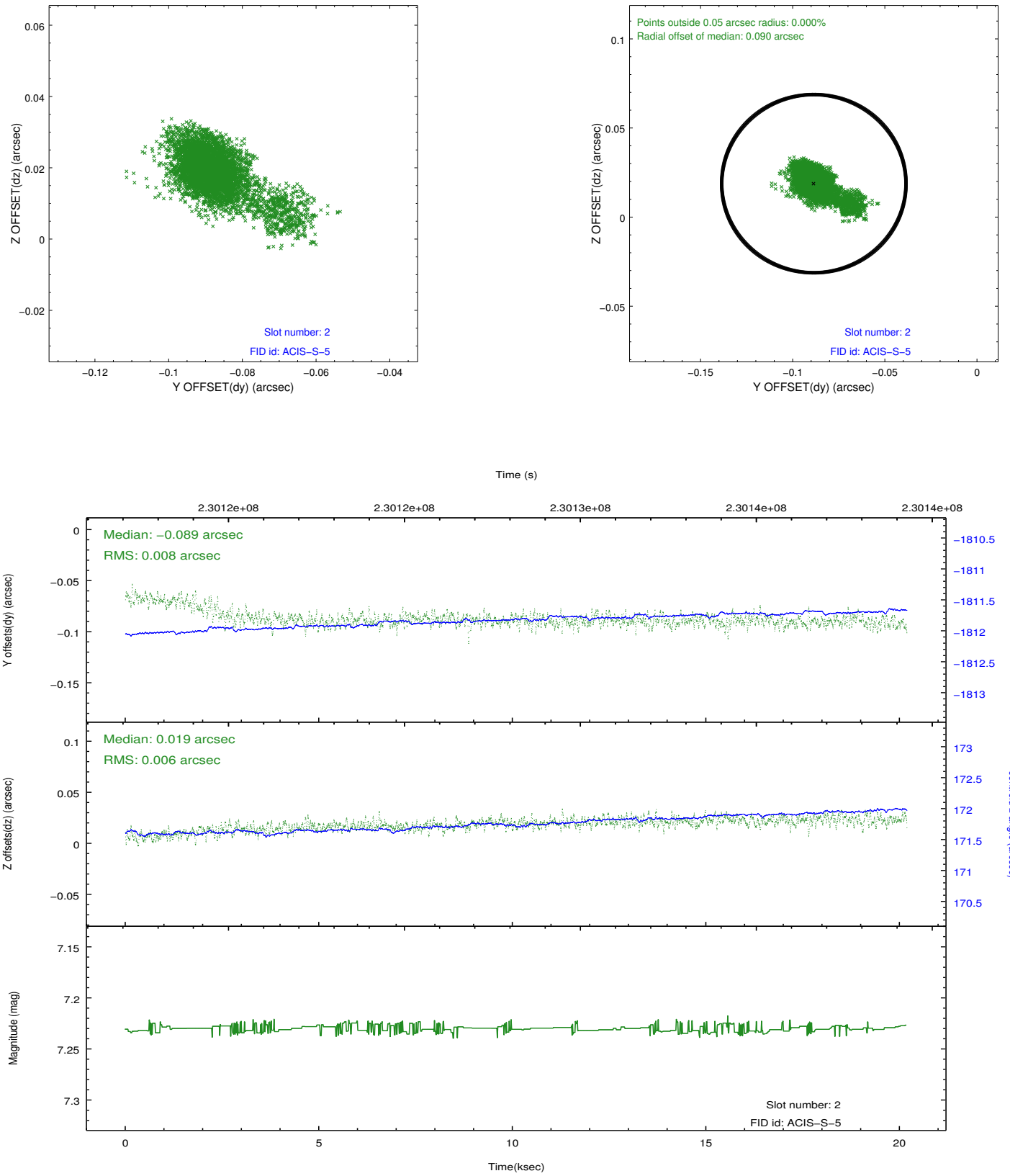
2.5.1 Slot 0



2.5.2 Slot 1



2.5.3 Slot 2



A Summary

A.1 Status

V&V Scientist	Jen Lauer
V&V Date (YYYY-MM-DD)	2013.01.15
V&V Edition	1
V&V Disposition and Status	OK
V&V Charge Time	20.18409

A.2 Comments