

V&V Reference Report

L2 ASCDS Version : 8.4.3.1

Observation 6399 - L2 Version 2
Chandra X-Ray Center

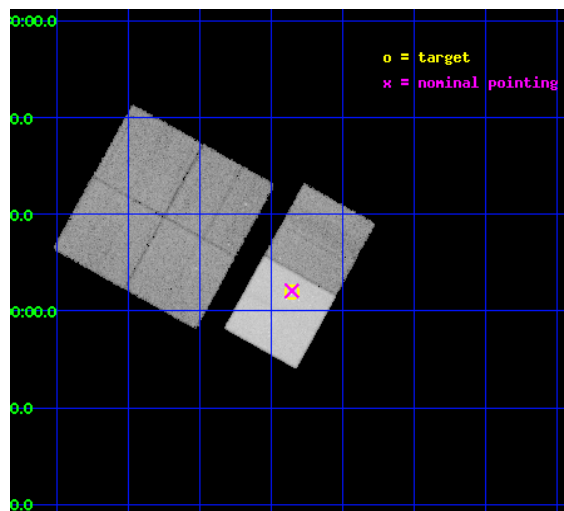
L2 Processing Date : Apr 2 2012

Contents

1	Front	2
2	OBI	3
2.1	OBI	3
2.1.1	Images	3
2.1.2	Bias	3
2.1.3	Parameters	4
2.1.4	Events	4
2.2	Compared Parameters	5
2.3	Aspect	6
2.4	Star Slots	9
2.4.1	Slot 3	9
2.4.2	Slot 4	10
2.4.3	Slot 5	11
2.4.4	Slot 6	12
2.4.5	Slot 7	13
2.5	FID Slots	14
2.5.1	Slot 0	14
2.5.2	Slot 1	15
2.5.3	Slot 2	16
A	Summary	17
A.1	Status	17
A.2	Comments	17

1 Front

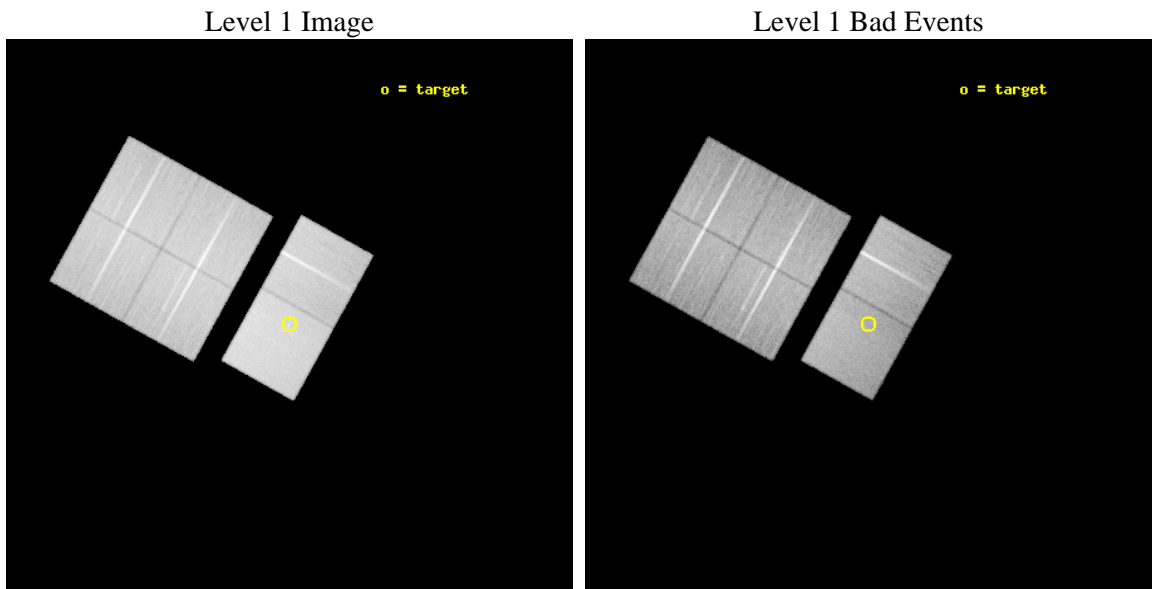
seq_num	200376	Sequence number
obs_id	6399	Observation id
title	On the origin of X-ray emission from Herbig Ae/Be stars	Proposal t
observer	Dr Beate Stelzer	Principal investigator
object	AS 310	Source name
dtycycle	0	
cycle	P	events from which exps? Prim/Second/Both
ra_targ	278.338333	Observer's specified target RA [deg]
dec_targ	-4.967222	Observer's specified target Dec [deg]
ra_nom	278.33918296941	Nominal RA [deg]
dec_nom	-4.9653153188183	Nominal Dec [deg]
roll_nom	119.02401253671	Nominal Roll [deg]
revision	2	Processing version of data
ontime	38687.281395018	Sum of GTIs [s]
livetime	38197.39974331	Livetime [s]
ontime0	38671.117433667	Sum of GTIs [s]
ontime1	38687.117235035	Sum of GTIs [s]
ontime2	38687.158275008	Sum of GTIs [s]
ontime3	38687.199315012	Sum of GTIs [s]
ontime6	38683.999364734	Sum of GTIs [s]
ontime7	38687.281395018	Sum of GTIs [s]
l2events	376415	Number of level 2 events



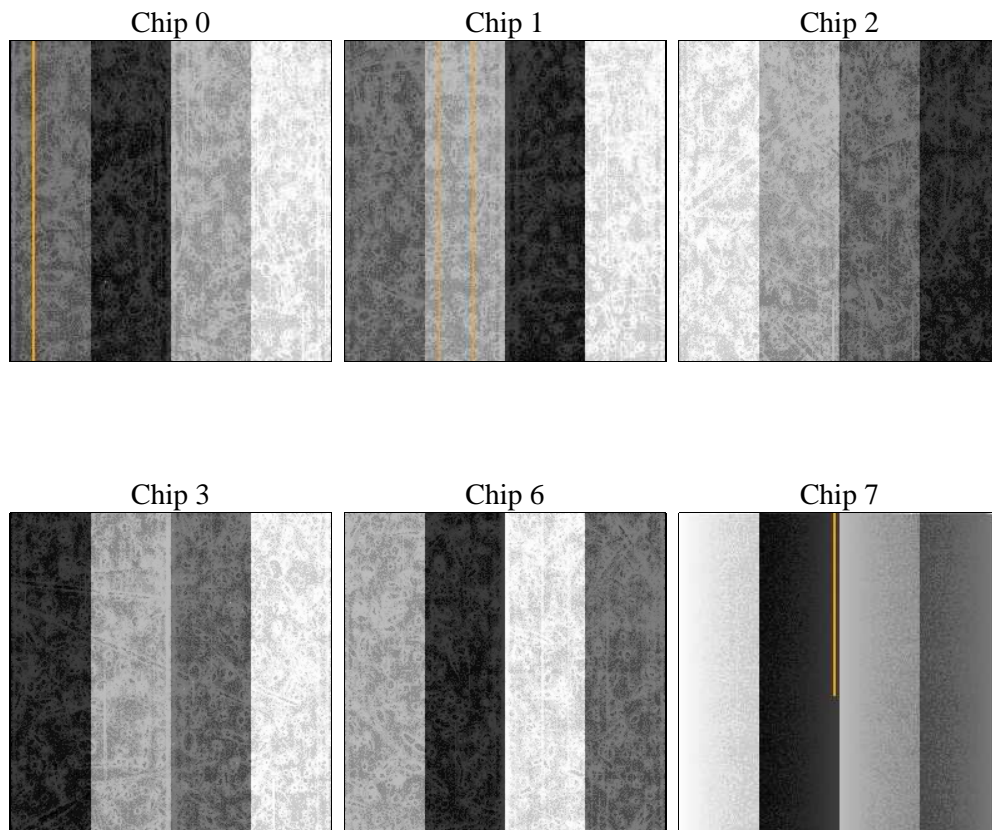
2 OBI

2.1 OBI

2.1.1 Images



2.1.2 Bias



2.1.3 Parameters

obi_num	0	Obi number	sched_exp_time	38732.000000	[s] Scheduled observation exposure time
ascdsver	8.4.3	Processing system revision	ontime	38687.281395018	Sum of GTIs [s]
caldbver	4.4.9	 	ontime0	38671.117433667	Sum of GTIs [s]
date	2012-04-02T04:55:42	Date and time of file creation	ontime1	38687.117235035	Sum of GTIs [s]
revision	2	Processing version of data	ontime2	38687.158275008	Sum of GTIs [s]
			ontime3	38687.199315012	Sum of GTIs [s]
			ontime6	38683.999364734	Sum of GTIs [s]
			ontime7	38687.281395018	Sum of GTIs [s]
			l1events	2204560	Number of level 1 events

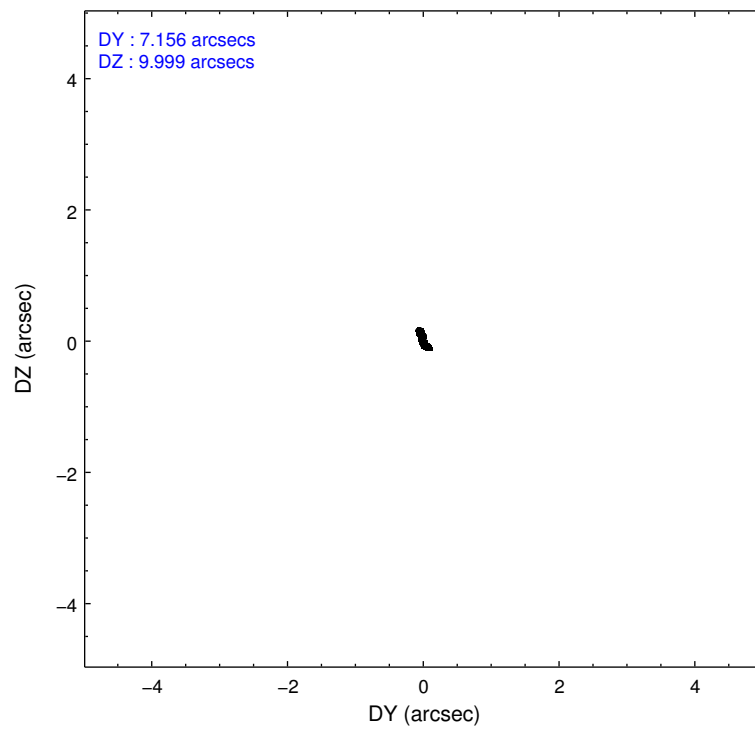
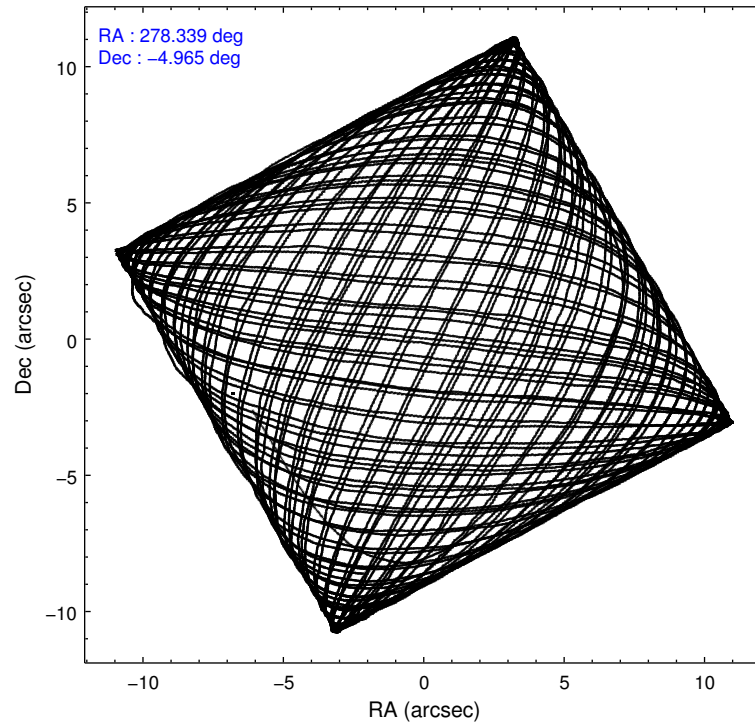
2.1.4 Events

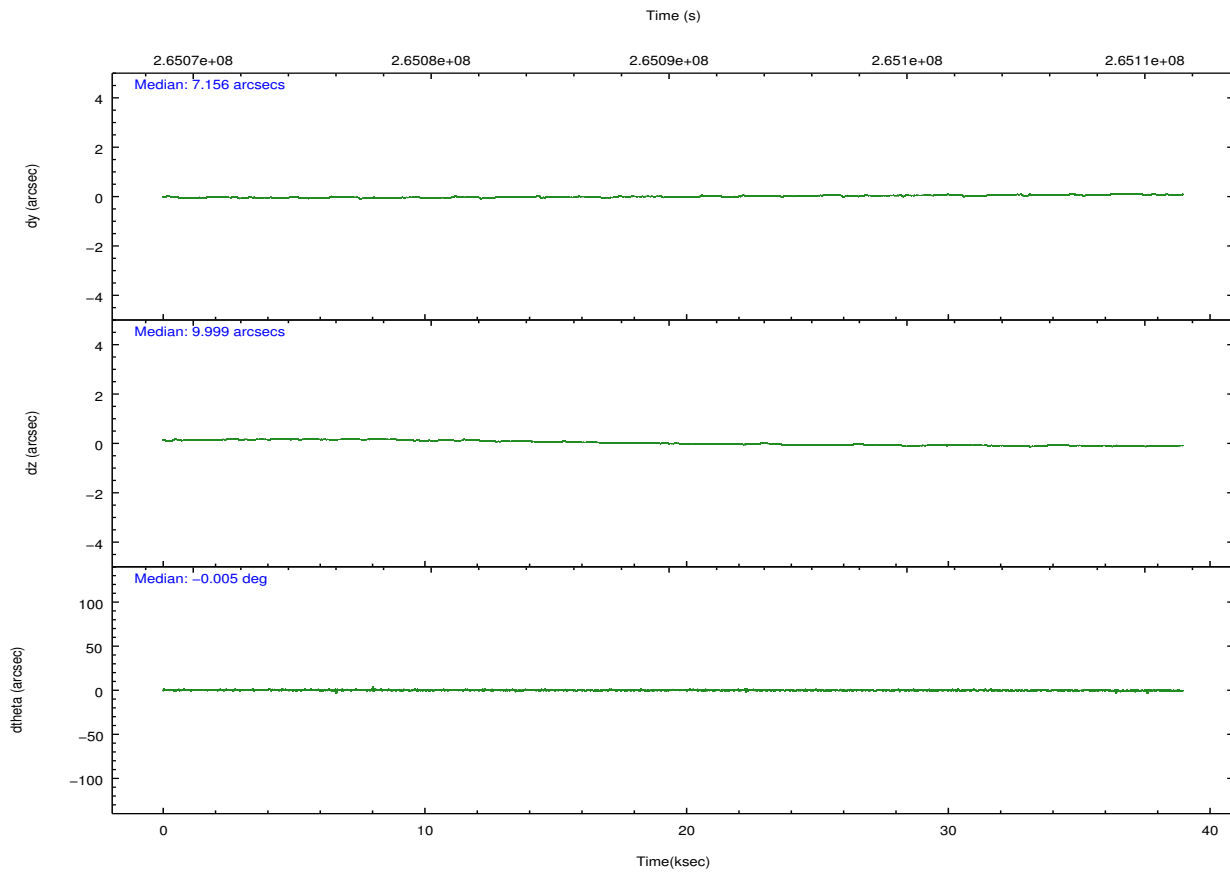
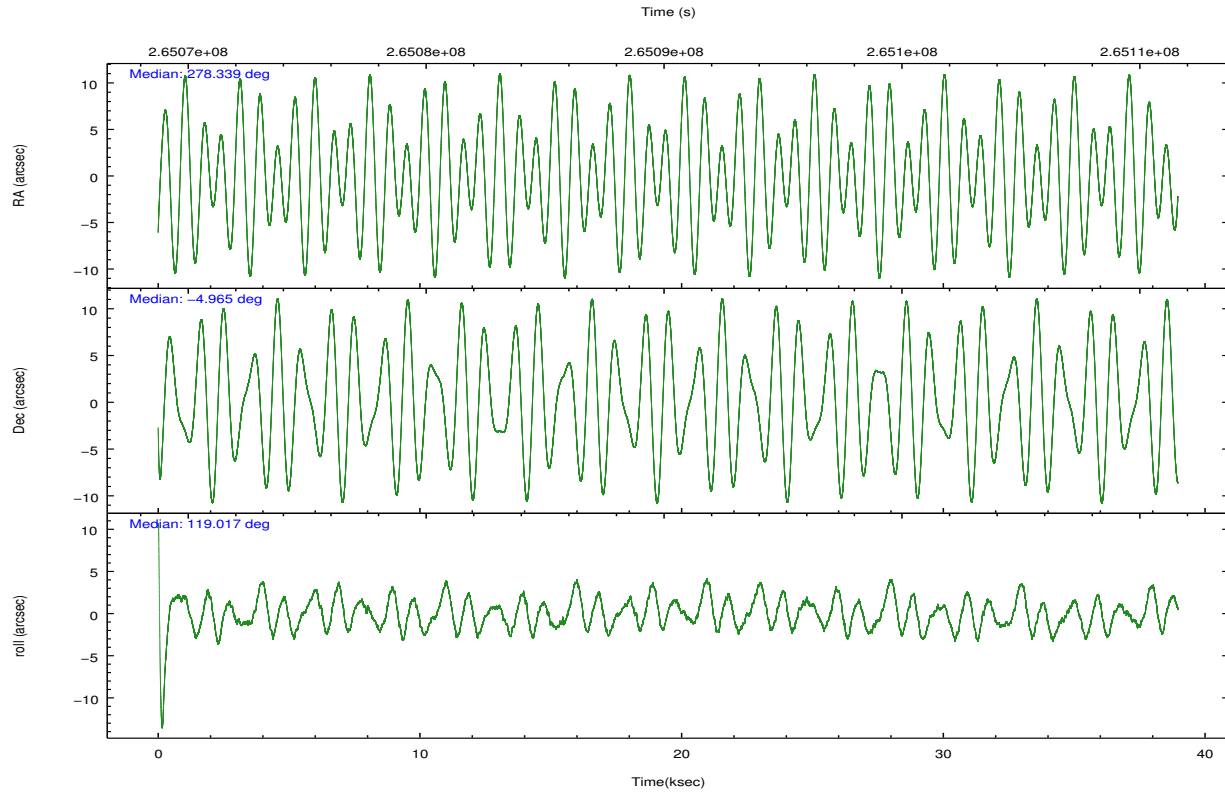
	ccd 0	ccd 1	ccd 2	ccd 3	ccd 6	ccd 7		ccd 0	ccd 1	ccd 2	ccd 3	ccd 6	ccd 7
level 1 events	342855	328884	350424	346224	360480	475693	grade 0 events	18280	17219	17745	18269	16442	17483
rejected events	299544	284520	310041	304799	318697	276491		5%	5%	5%	5%	4%	3%
rejected %	87%	86%	88%	88%	88%	58%	grade 1 events	244	201	212	211	179	474
								0%	0%	0%	0%	0%	0%
							grade 2 events	9493	10114	8178	7892	8927	40244
								2%	3%	2%	2%	2%	8%
							grade 3 events	4230	4225	3784	4045	4060	17237
								1%	1%	1%	1%	1%	3%
							grade 4 events	3819	4179	3827	3977	3963	17389
								1%	1%	1%	1%	1%	3%
							grade 5 events	14504	15065	12877	15735	16386	44762
								4%	4%	3%	4%	4%	9%
							grade 6 events	7495	8628	6852	7246	8398	106870
								2%	2%	1%	2%	2%	22%
							grade 7 events	284790	269253	296949	288849	302125	231234
								83%	81%	84%	83%	83%	48%

2.2 Compared Parameters

Parameter	Planned	Actual	Parameter	Planned	Actual
Instrument	ACIS	ACIS	Obspar format version number	7	7
Detector	ACIS-012367	ACIS-012367	Obspar file type	PREDICTED	ACTUAL
Grating	NONE	NONE	Obspar update status	NONE	UPDATED
Data mode	FAINT	FAINT	Number of optional ACIS chips dropped	0	0
Observation mode	POINTING	POINTING	On-chip summing requested	N	N
[deg] Pointing RA	278.362821	278.339182969406	Subarray requested	NONE	NONE
[deg] Pointing Dec	-4.979017	-4.965315318818257	Alternating exposures requested	N	N
[deg] Pointing Roll	118.869429	119.0240125367146	[s] Primary exposure time	0.000000	3.2
[mm] SIM focus pos	-0.684267	-0.6828225247311905			
[mm] SIM defocus	0	0.001444936568705701			
[mm] SIM translation stage pos	-190.132523	-190.1400660498719			
[mm] SIM translation stage offset	0	0.00754346686406393			
[s] Observation start time (MET)	265070920.184000	265069934.67741			
Observation start date	2006-05-26T22:47:35	2006-05-26T22:32:14			
[s] Observation end time (MET)	265109652.184000	265110415.5168			
Observation end date	2006-05-27T09:33:07	2006-05-27T09:46:55			
Read mode	TIMED	TIMED			

2.3 Aspect



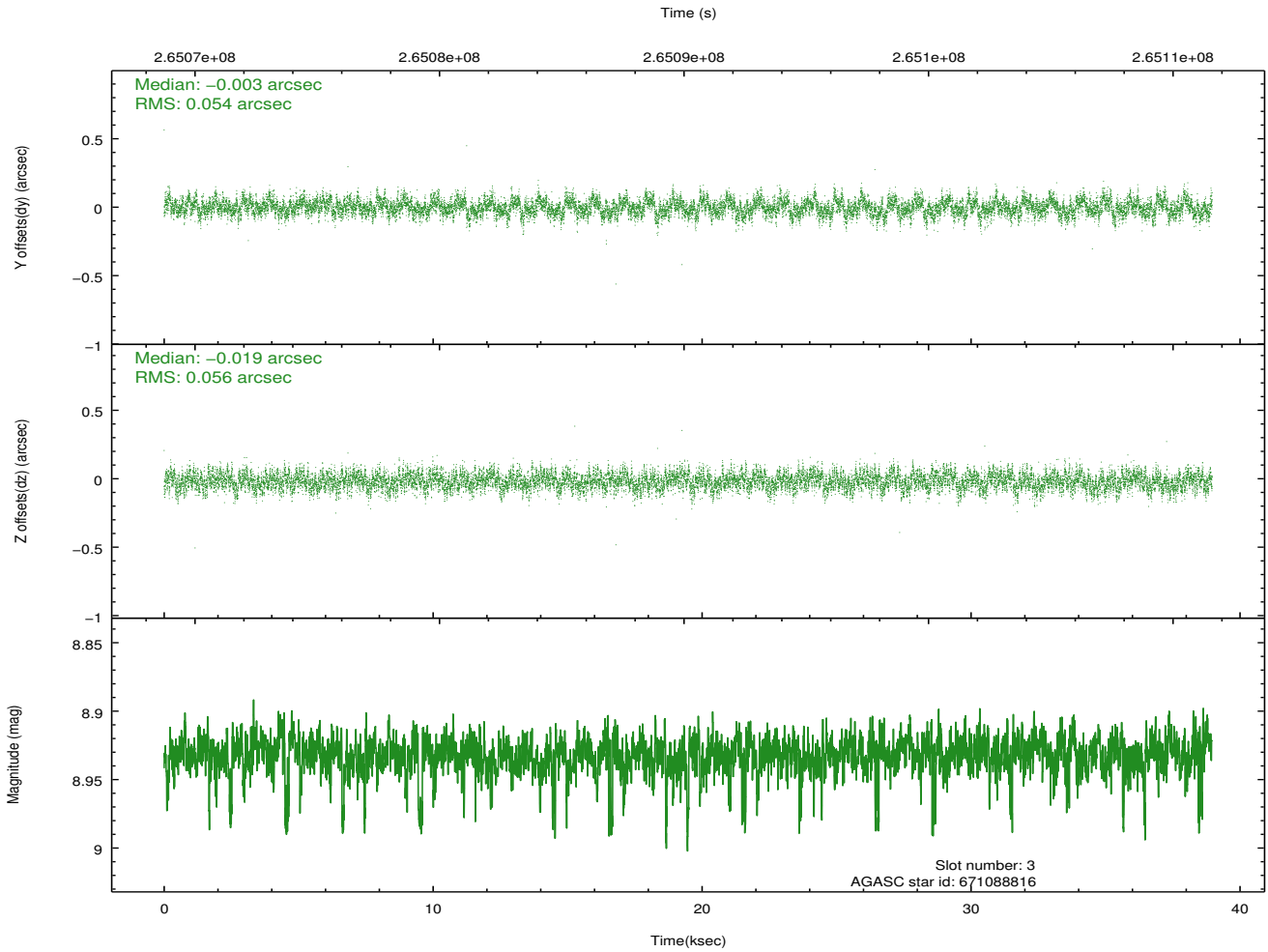
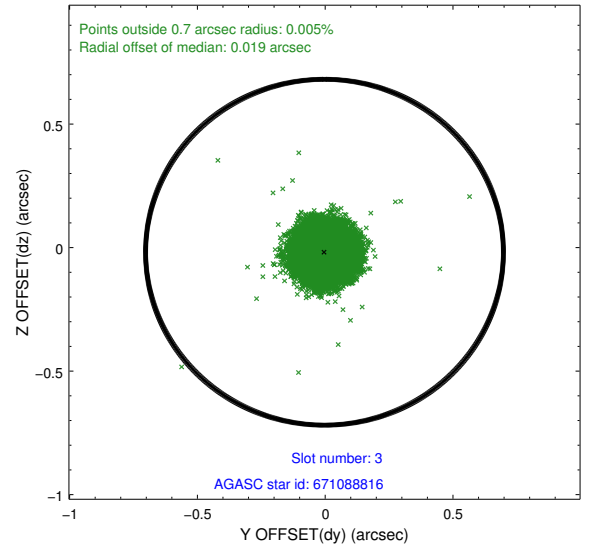
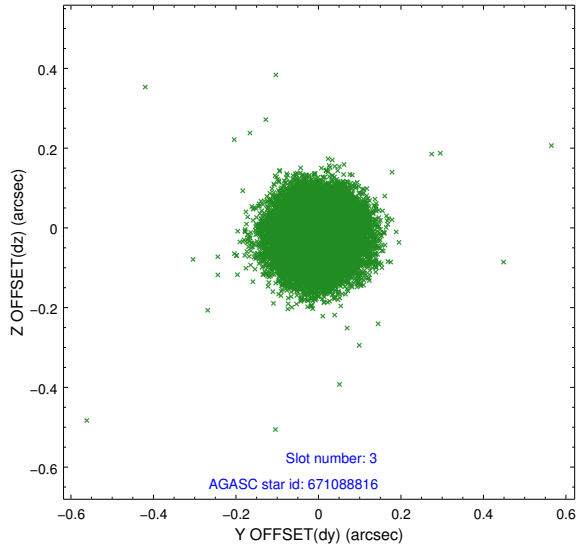


Slot Statistics

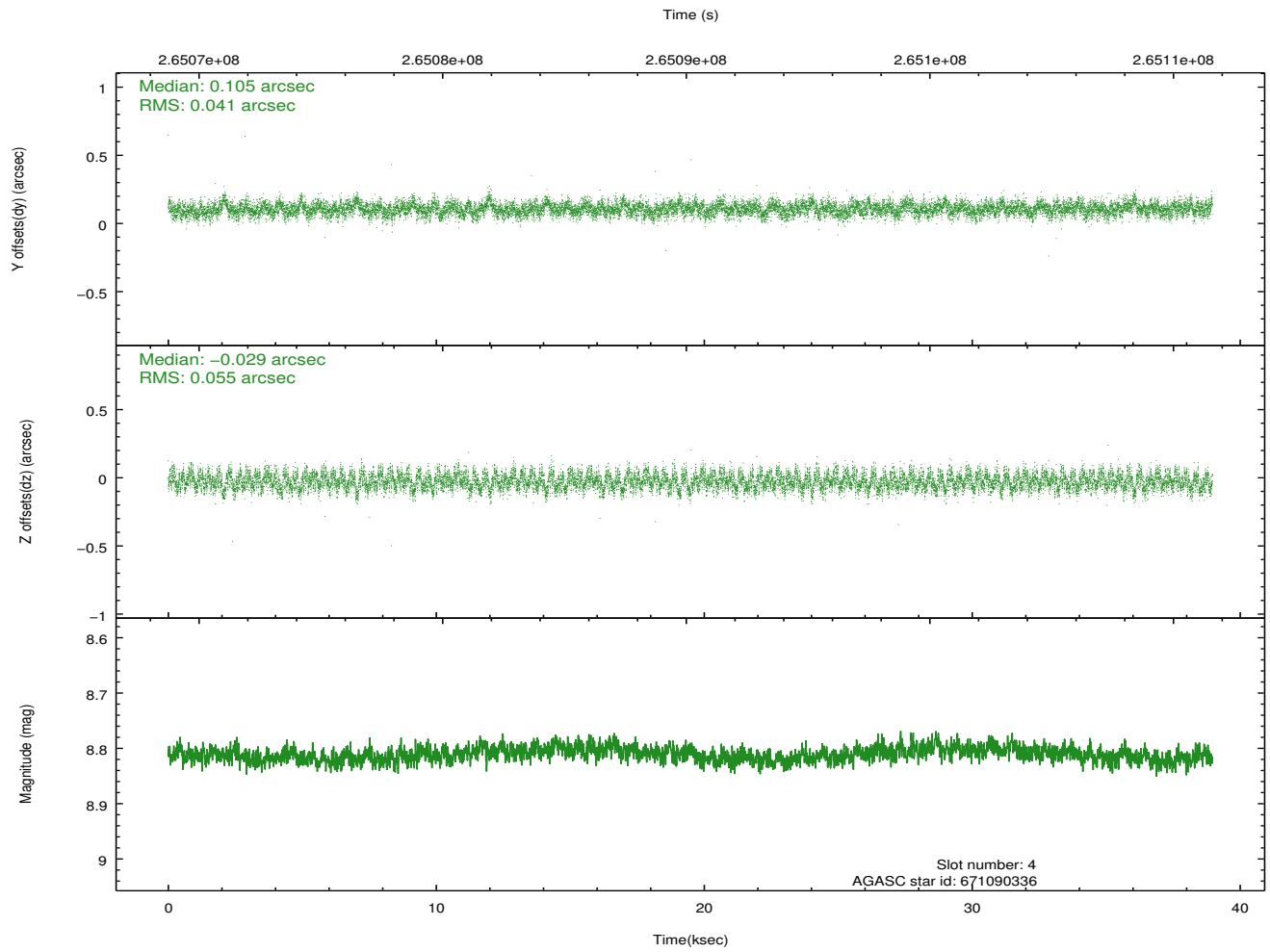
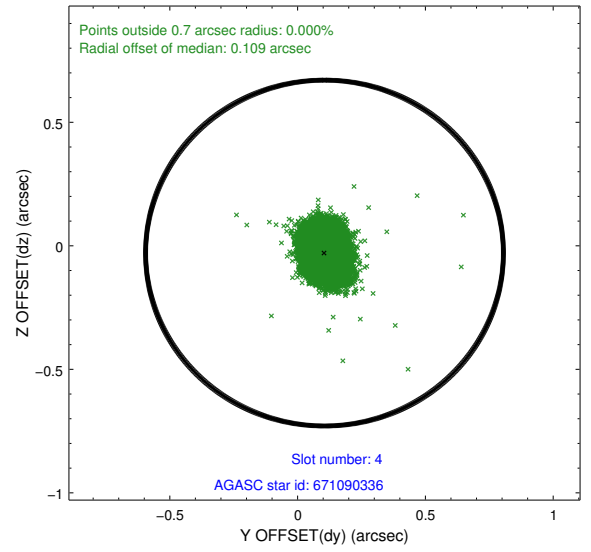
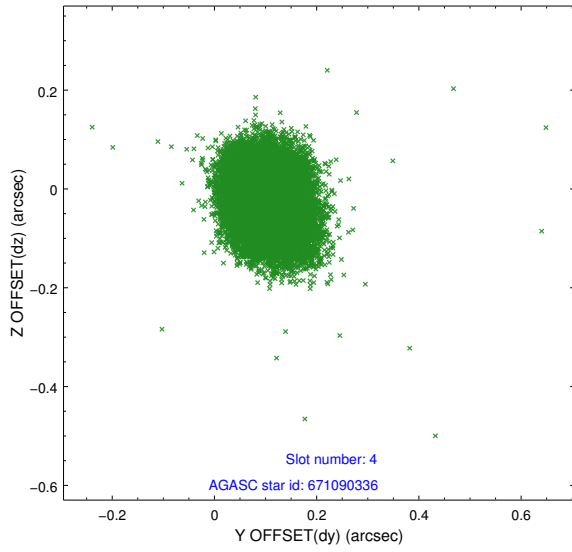
slot	status	id	mag	n_pts	med_dy	med_dz	dr1	dr2	ra	dec	mean_y	mean_z
0	FID	ACIS-S-1	7.19	9503	0.015	-0.019	0.008	0.014	0.000000	0.000000	936.11	-1726.93
1	FID	ACIS-S-2	7.11	9502	-0.090	-0.032	0.006	0.011	0.000000	0.000000	-759.89	-1731.49
2	FID	ACIS-S-4	7.21	9502	0.049	0.057	0.006	0.010	0.000000	0.000000	2153.40	177.28
3	GUIDE	671088816	8.93	18994	-0.003	-0.019	0.082	0.131	278.622688	-4.709303	400.19	-1285.13
4	GUIDE	671090336	8.81	18990	0.105	-0.029	0.072	0.117	278.566018	-4.813574	169.94	-925.86
5	GUIDE	671090368	8.63	18999	-0.177	-0.140	0.083	0.134	277.725087	-5.013766	993.50	2063.77
6	GUIDE	671092848	9.41	18990	-0.025	-0.053	0.117	0.181	277.705391	-4.618850	2273.47	1440.86
7	GUIDE	671097208	9.19	18998	0.097	0.244	0.086	0.140	279.096559	-5.117608	-1707.90	-2062.23

2.4 Star Slots

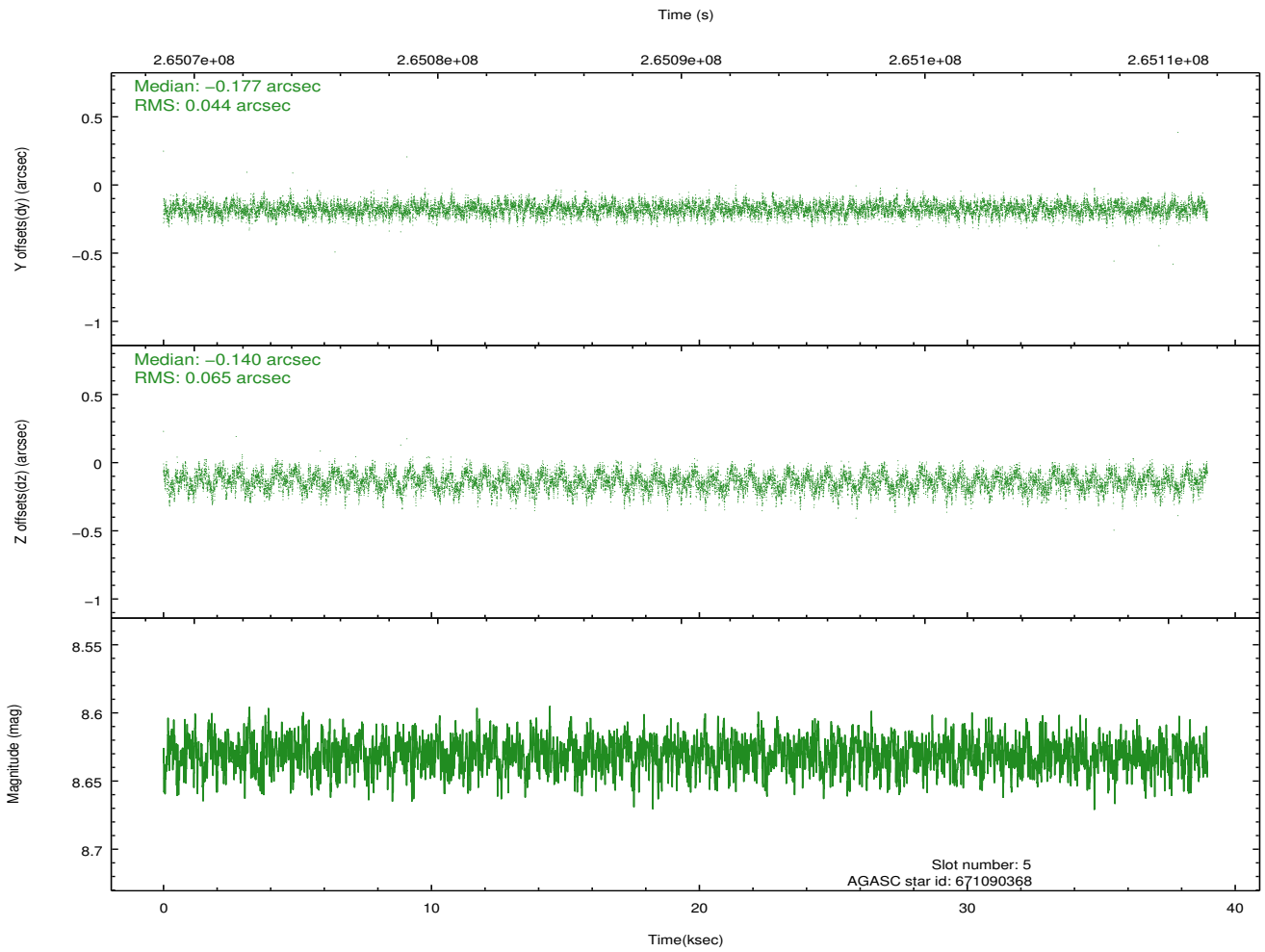
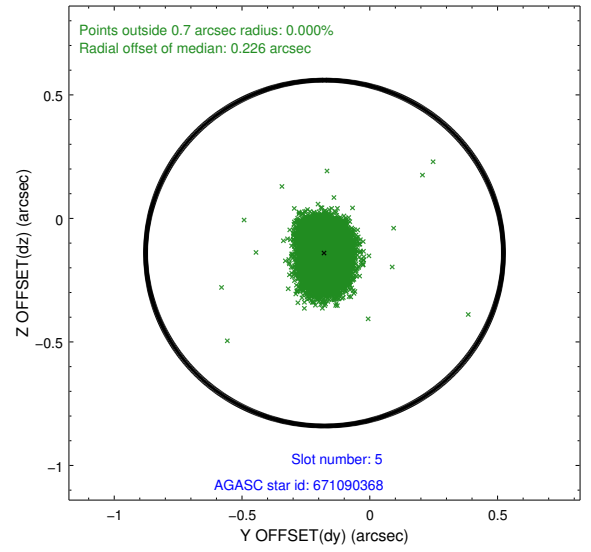
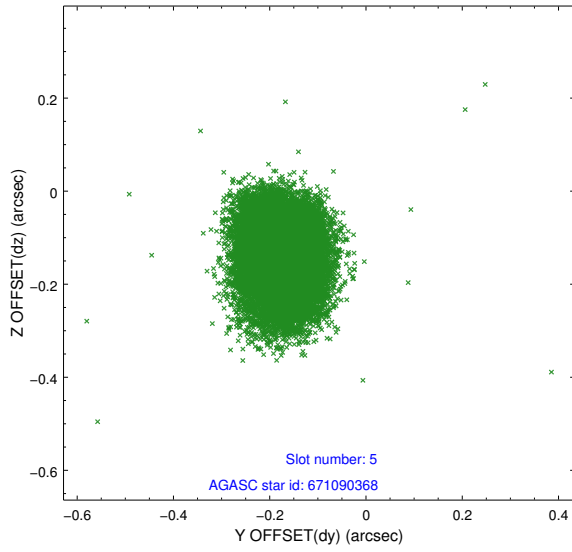
2.4.1 Slot 3



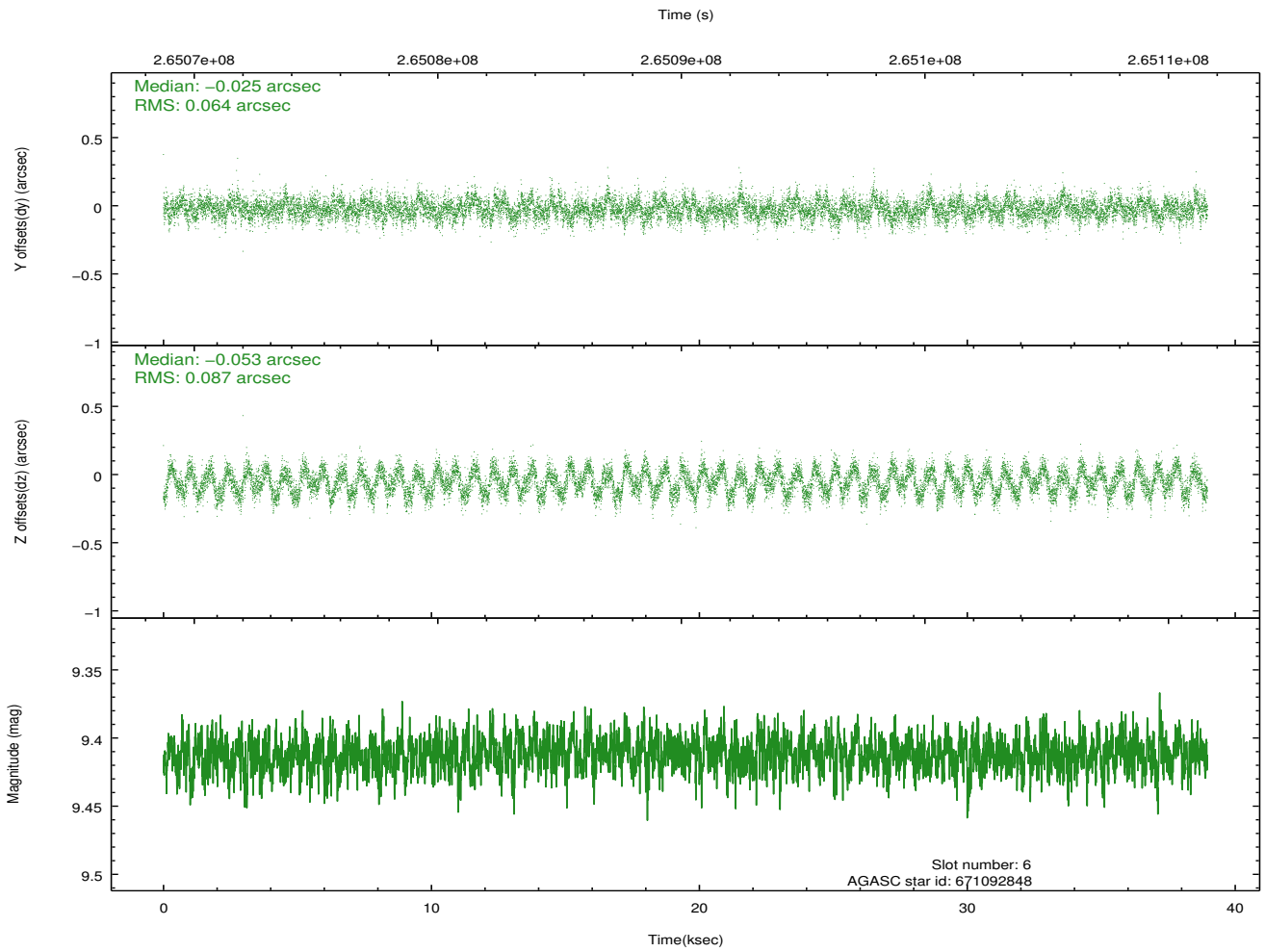
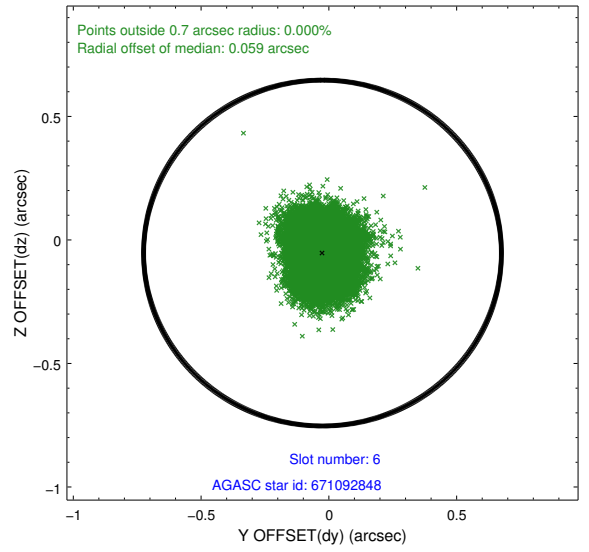
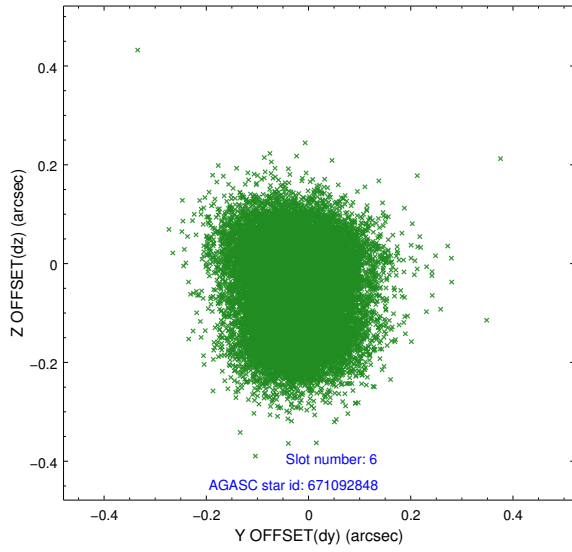
2.4.2 Slot 4



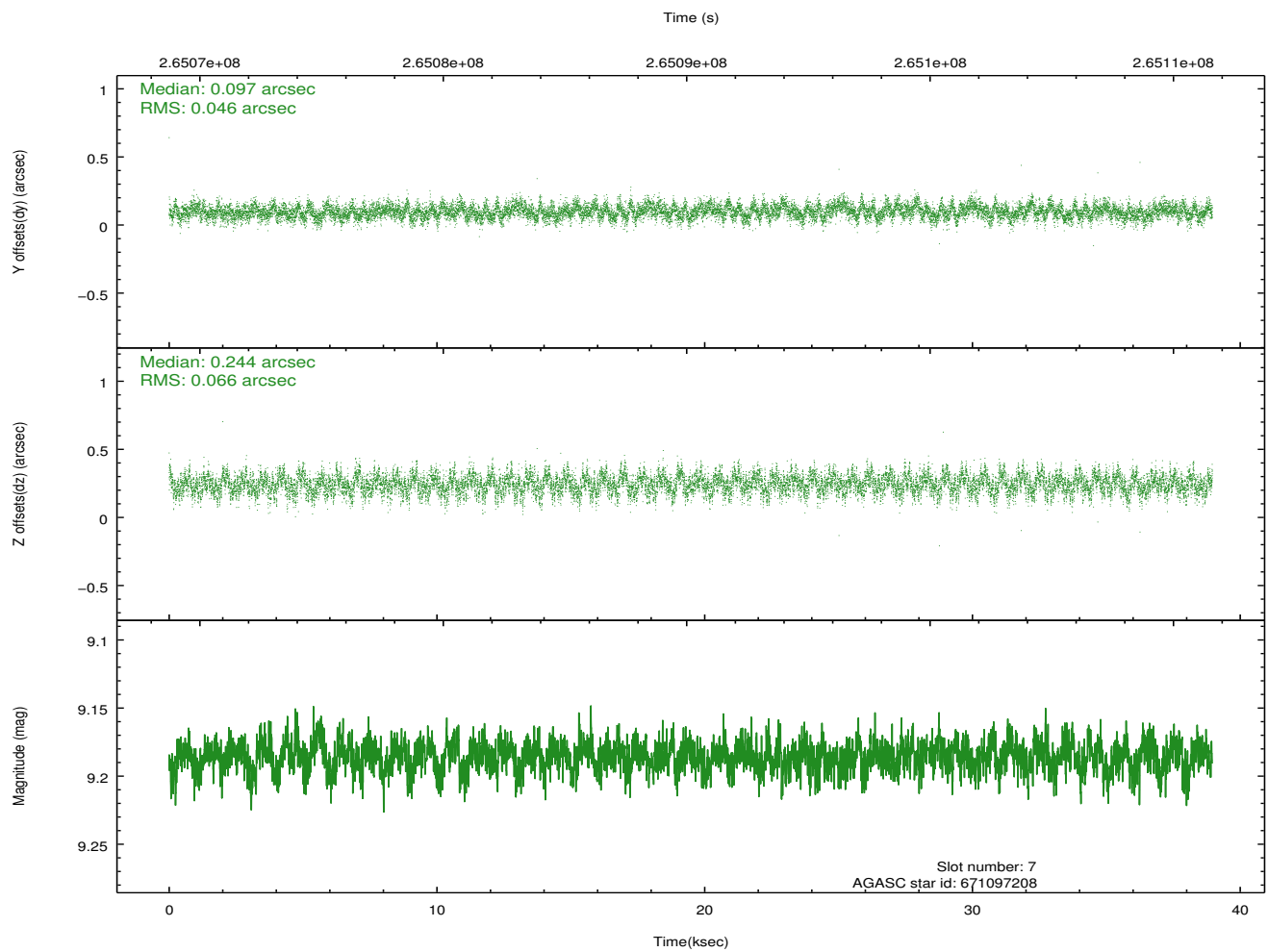
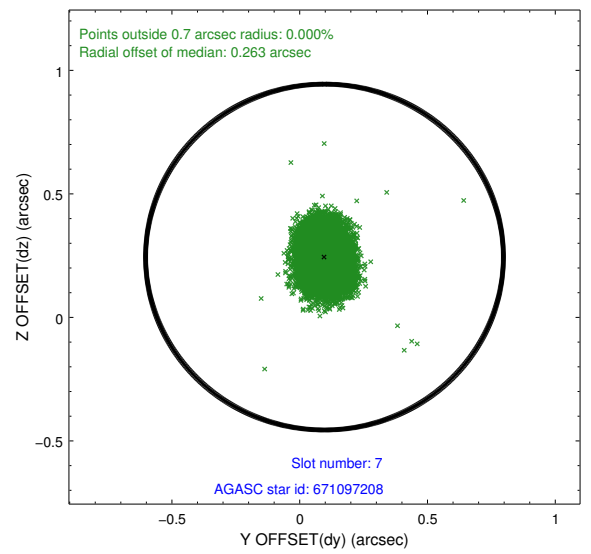
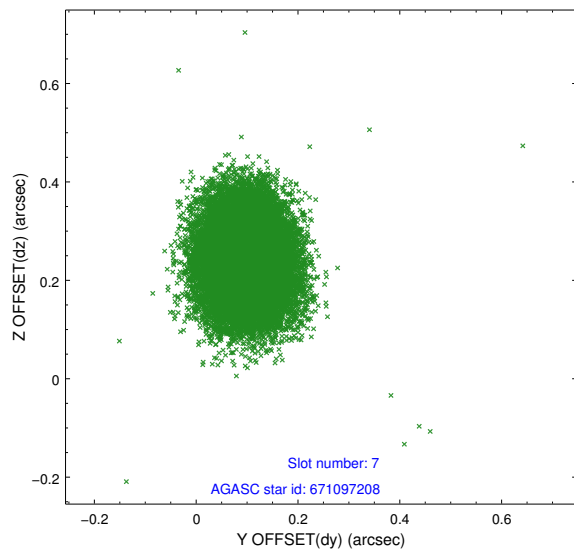
2.4.3 Slot 5



2.4.4 Slot 6

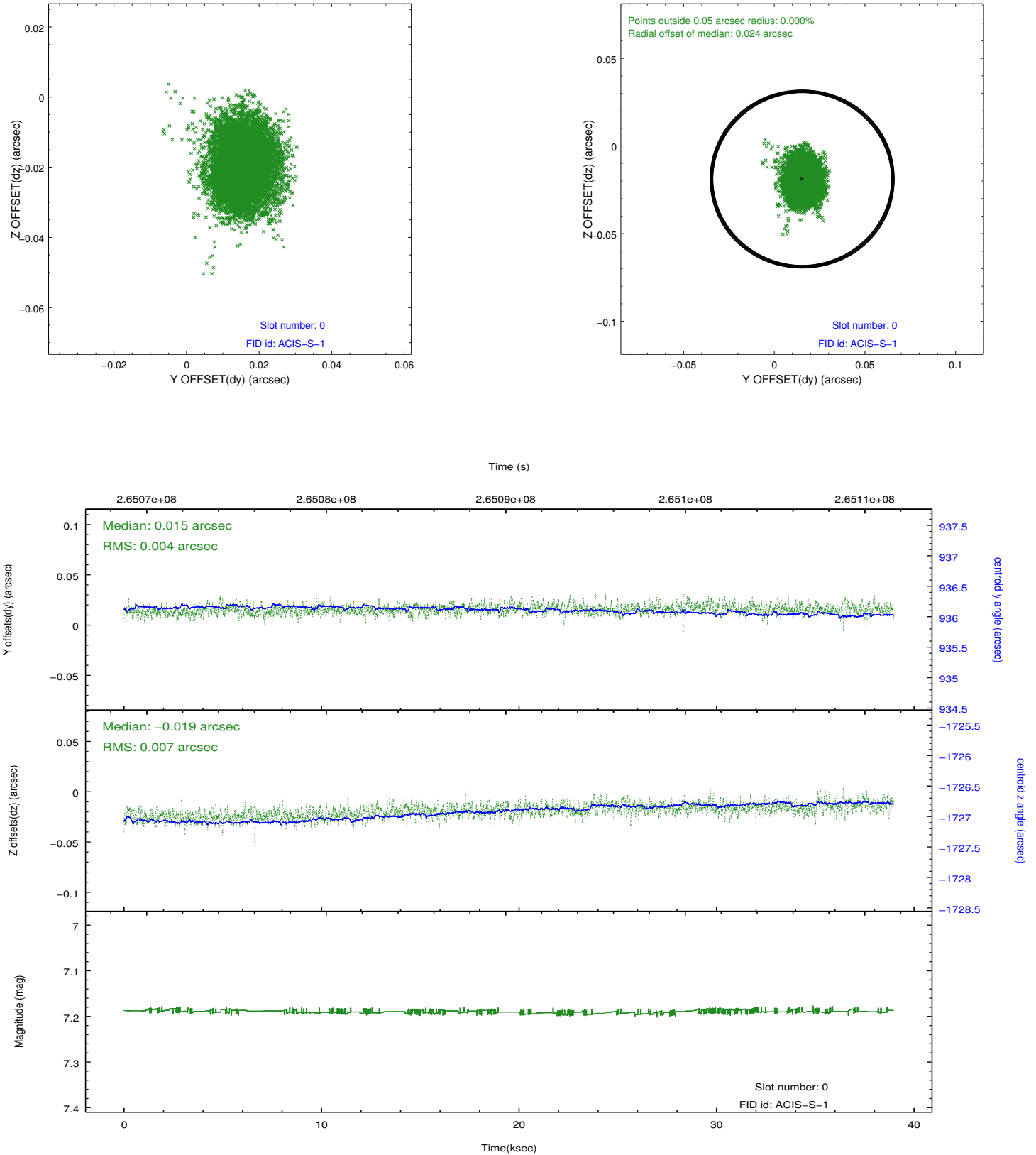


2.4.5 Slot 7

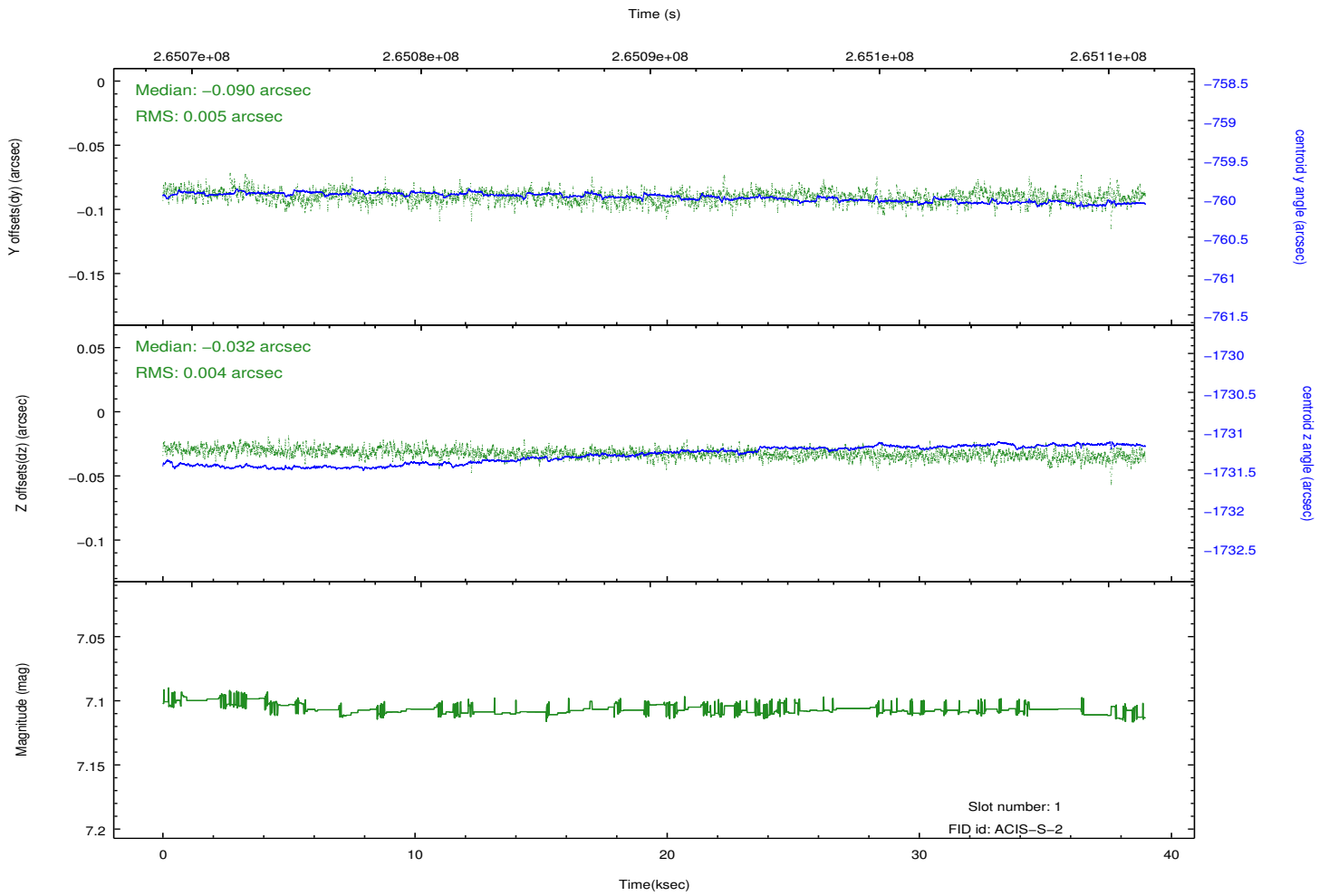
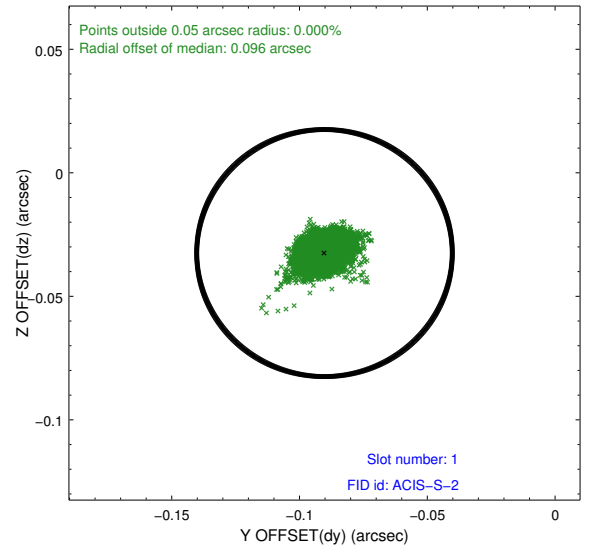
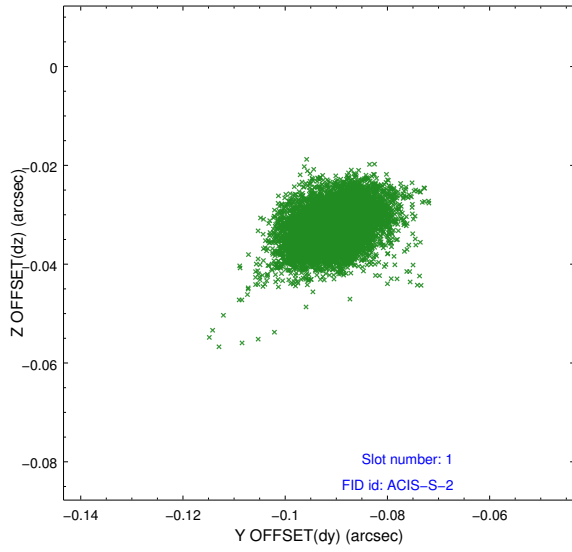


2.5 FID Slots

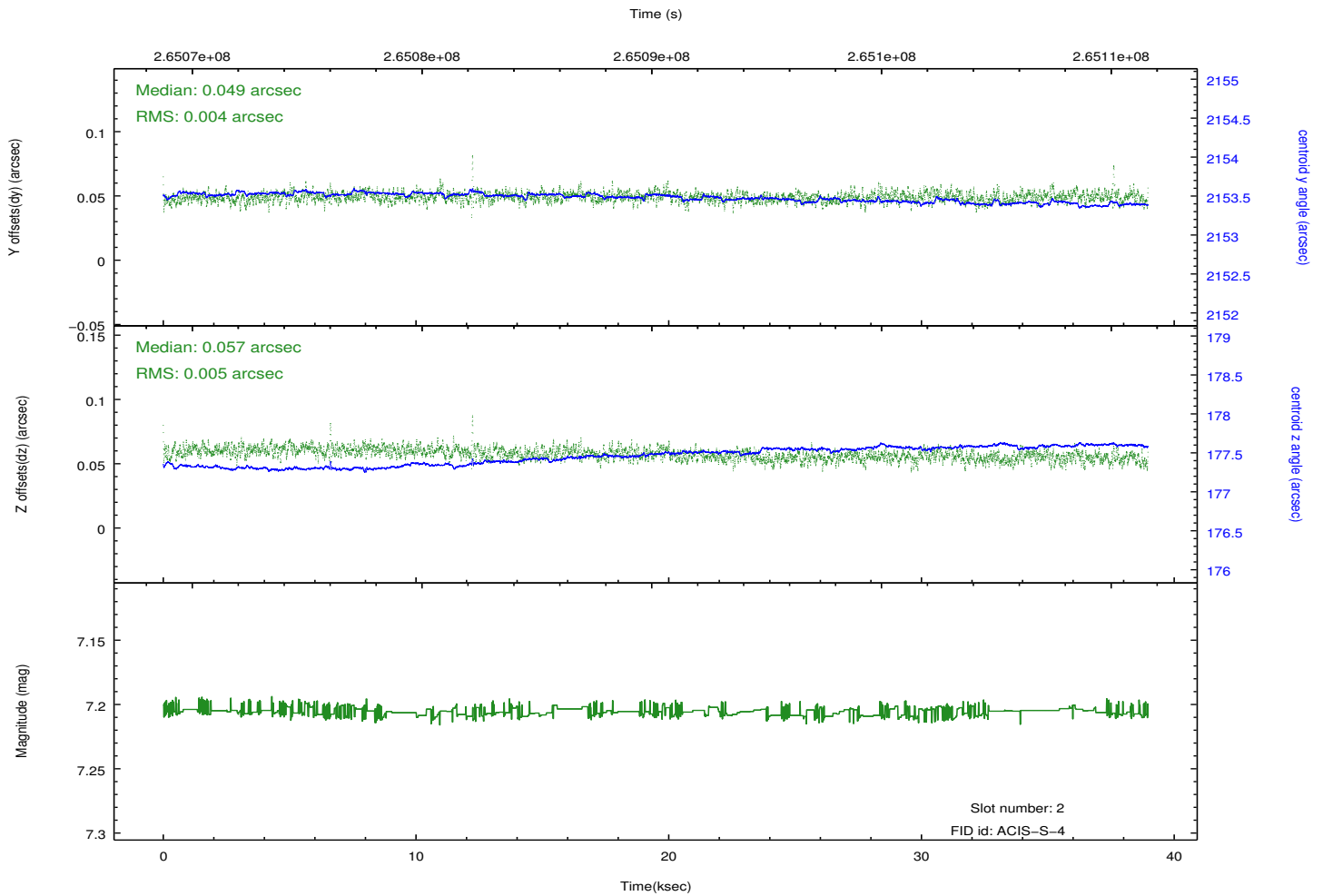
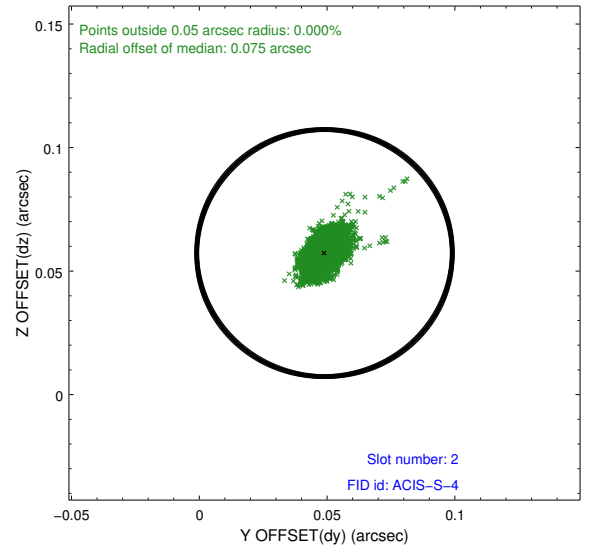
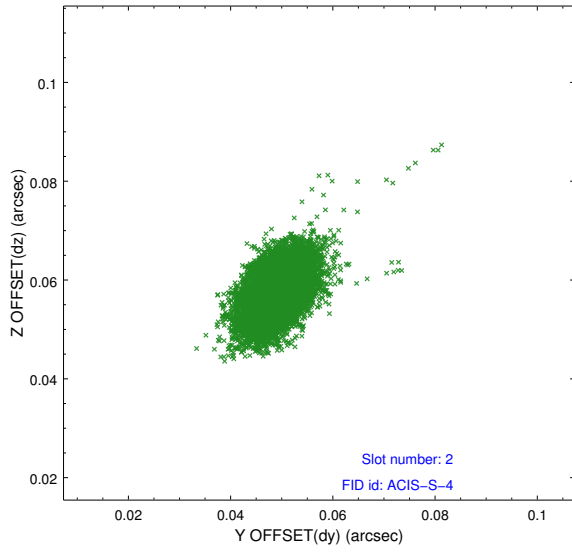
2.5.1 Slot 0



2.5.2 Slot 1



2.5.3 Slot 2



A Summary

A.1 Status

V&V Scientist	Jen Lauer
V&V Date (YYYY-MM-DD)	2012.04.03
V&V Edition	1
V&V Disposition and Status	OK
V&V Charge Time	38.6879998

A.2 Comments