

# V&V Reference Report

## L2 ASCDS Version : 8.4.3

Observation 7339 - L2 Version 2  
Chandra X-Ray Center

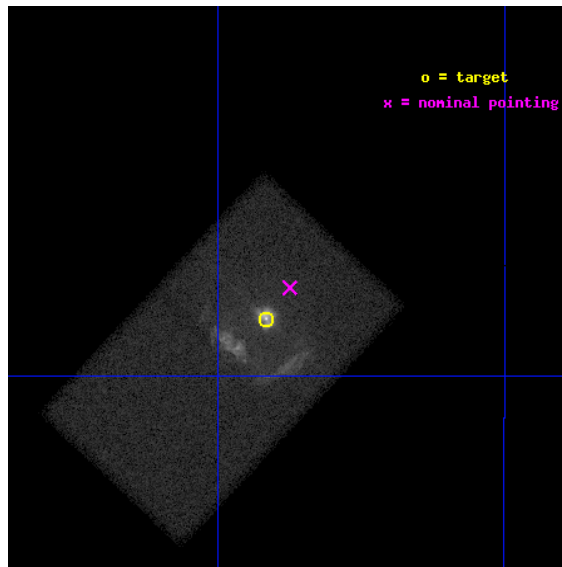
L2 Processing Date : Apr 3 2012

## Contents

<b>1</b>	<b>Front</b>	<b>2</b>
<b>2</b>	<b>OBI</b>	<b>3</b>
2.1	OBI . . . . .	3
2.1.1	Images . . . . .	3
2.1.2	Bias . . . . .	3
2.1.3	Parameters . . . . .	4
2.1.4	Events . . . . .	4
2.2	Compared Parameters . . . . .	5
2.3	Aspect . . . . .	6
2.4	Star Slots . . . . .	9
2.4.1	Slot 3 . . . . .	9
2.4.2	Slot 4 . . . . .	10
2.4.3	Slot 5 . . . . .	11
2.4.4	Slot 6 . . . . .	12
2.4.5	Slot 7 . . . . .	13
2.5	FID Slots . . . . .	14
2.5.1	Slot 0 . . . . .	14
2.5.2	Slot 1 . . . . .	15
2.5.3	Slot 2 . . . . .	16
<b>A</b>	<b>Summary</b>	<b>17</b>
A.1	Status . . . . .	17
A.2	Comments . . . . .	17

# 1 Front

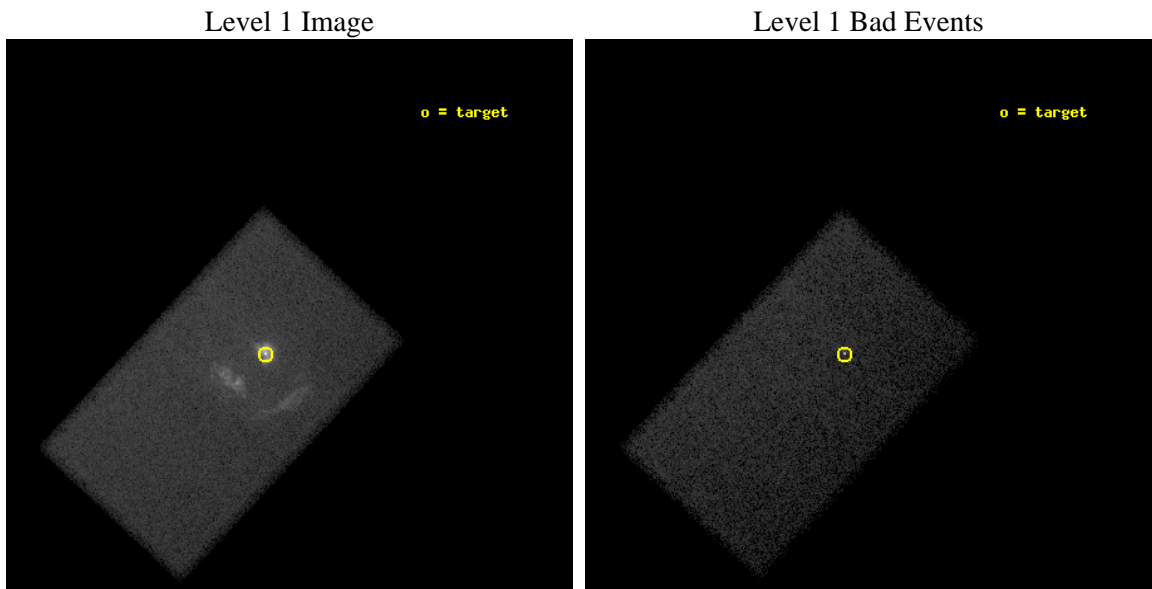
seq_num	500637	Sequence number
obs_id	7339	Observation id
title	A Deep Chandra Observation of the Supernova Remnant Kes 75	Proposa
observer	Dr. Patrick Slane	Principal investigator
object	Kes 75	Source name
dtycle	0	&#160
cycle	P	events from which exps? Prim/Second/Both
ra_targ	281.60375	Observer's specified target RA [deg]
dec_targ	-2.975111	Observer's specified target Dec [deg]
ra_nom	281.59367799789	Nominal RA [deg]
dec_nom	-2.9618753651708	Nominal Dec [deg]
roll_nom	133.15610348771	Nominal Roll [deg]
revision	2	Processing version of data
ontime	45120.600298822	Sum of GTIs [s]
livetime	44114.783240929	Livetime [s]
ontime7	45120.600298822	Sum of GTIs [s]
l2events	224362	Number of level 2 events



## 2 OBI

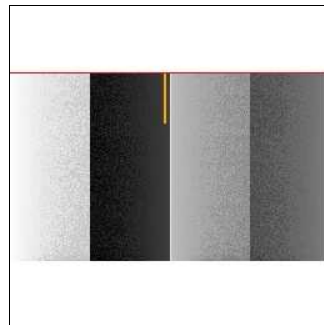
### 2.1 OBI

#### 2.1.1 Images



#### 2.1.2 Bias

Chip 7



### 2.1.3 Parameters

obi_num	0	Obi number	sched_exp_time	45000.000000	[s] Scheduled observation exposure time
ascdsver	8.4.3.1	Processing system revision	ontime	45120.600298822	Sum of GTIs [s]
caldbver	4.4.9	&#160	ontime7	45120.600298822	Sum of GTIs [s]
date	2012-04-03T12:33:46	Date and time of file creation	l1events	421771	Number of level 1 events
revision	2	Processing version of data			

### 2.1.4 Events

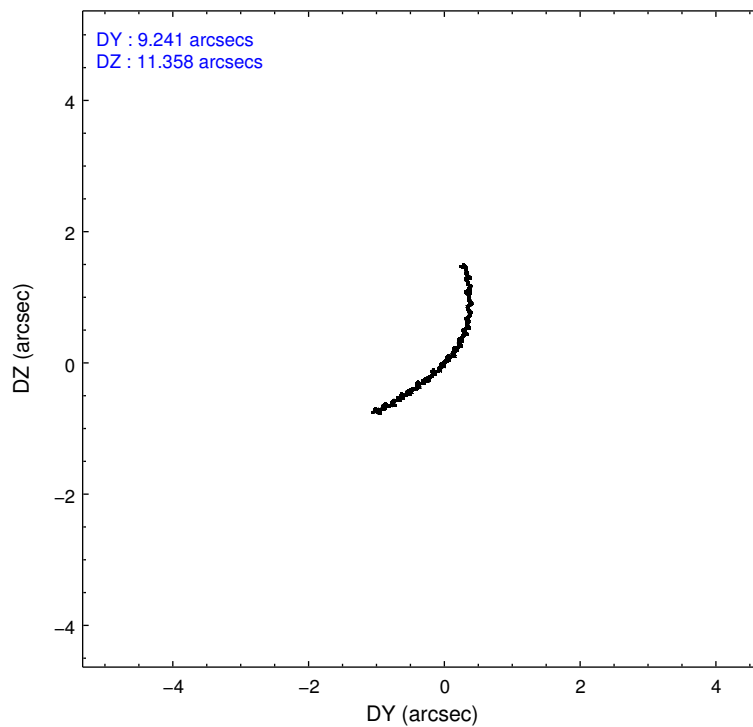
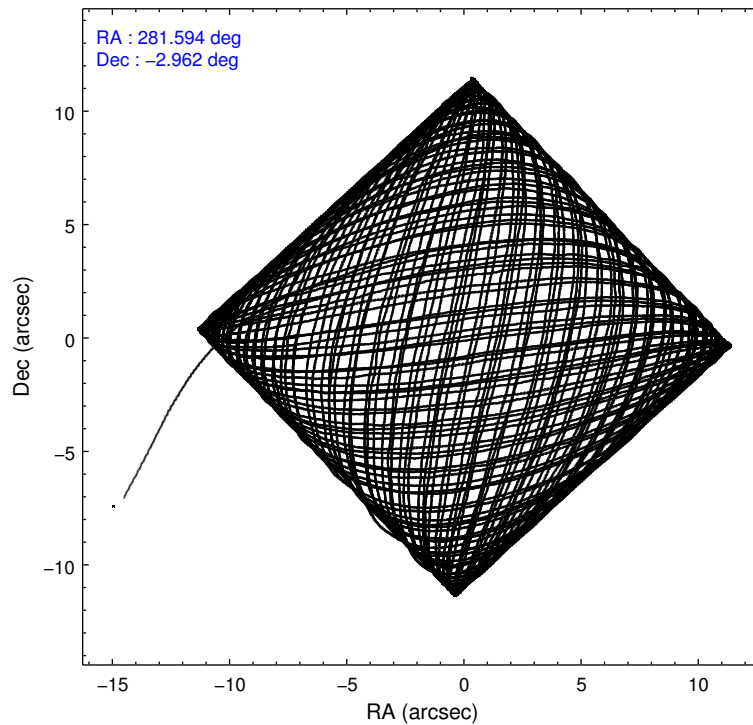
	<b>ccd 7</b>
level 1 events	421771
rejected events	193511
rejected %	45%

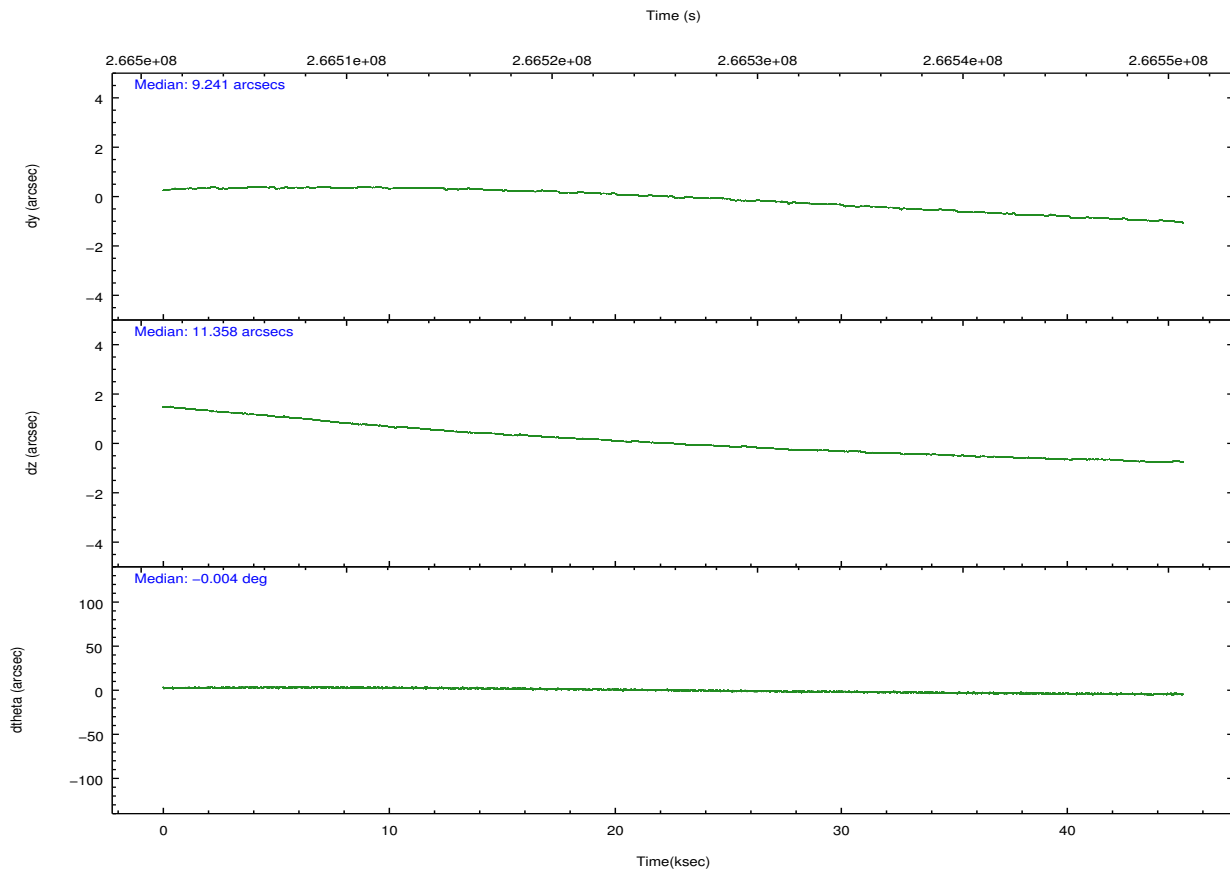
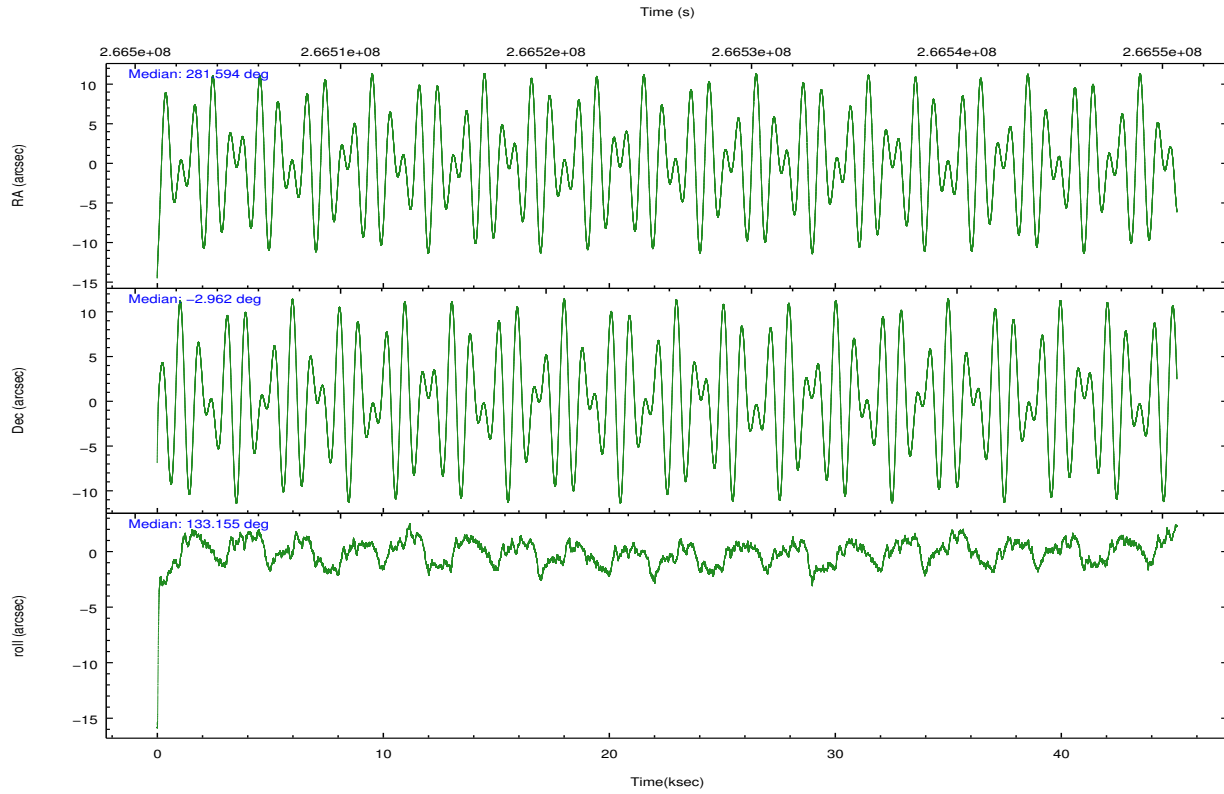
	<b>ccd 7</b>
grade 0 events	31999
	7%
grade 1 events	663
	0%
grade 2 events	51390
	12%
grade 3 events	23713
	5%
grade 4 events	23733
	5%
grade 5 events	33406
	7%
grade 6 events	100470
	23%
grade 7 events	156397
	37%

## 2.2 Compared Parameters

Parameter	Planned	Actual	Parameter	Planned	Actual
Instrument	ACIS	ACIS	Obspar format version number	7	7
Detector	ACIS-7	ACIS-7	Obspar file type	PREDICTED	ACTUAL
Grating	NONE	NONE	Obspar update status	NONE	UPDATED
Data mode	VFAINT	VFAINT	Number of optional ACIS chips dropped	0	0
Observation mode	POINTING	POINTING	On-chip summing requested	N	N
[deg] Pointing RA	281.619892	281.5936779978867	Subarray requested	CUSTOM	CUSTOM
[deg] Pointing Dec	-2.969418	-2.961875365170753	Subarray start row	212	212
[deg] Pointing Roll	133.000835	133.1561034877075	Subarray row count	600	600
[mm] SIM focus pos	-0.684267	-0.6828225247311905	Alternating exposures requested	N	N
[mm] SIM defocus	0	0.001444936568705701	[s] Primary exposure time	0.000000	1.8
[mm] SIM translation stage pos	-190.132523	-190.1400660498719			
[mm] SIM translation stage offset	0	0.00754346686406393			
[s] Observation start time (MET)	266503444.184000	266502377.88184			
Observation start date	2006-06-12T12:42:59	2006-06-12T12:26:17			
[s] Observation end time (MET)	266548444.184000	266549216.79653			
Observation end date	2006-06-13T01:12:59	2006-06-13T01:26:56			
Read mode	TIMED	TIMED			

## 2.3 Aspect



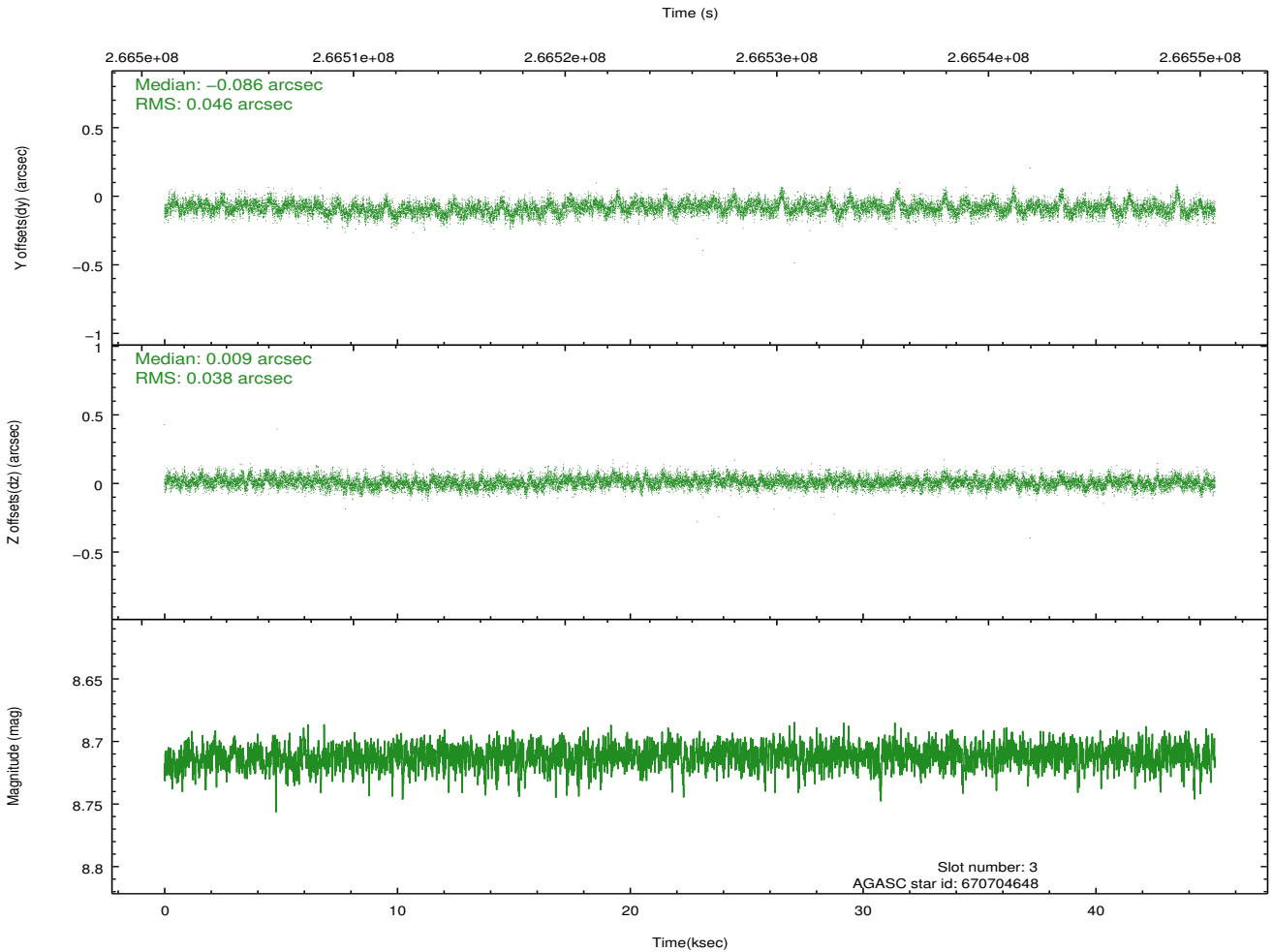
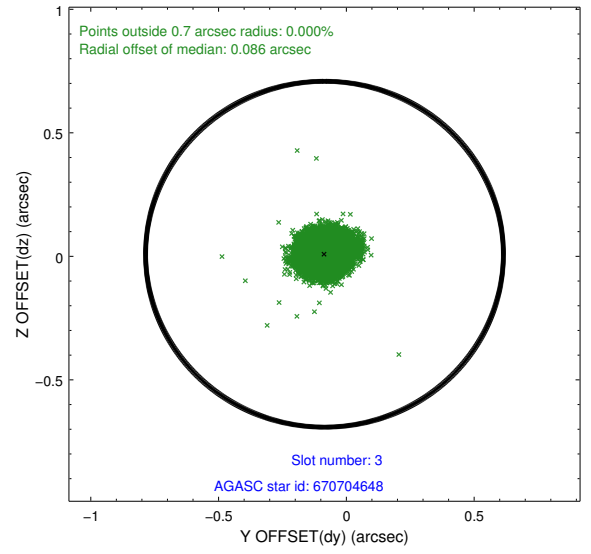
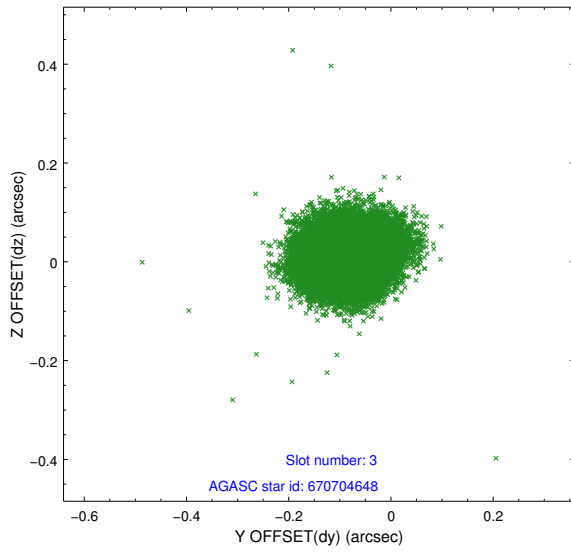


### Slot Statistics

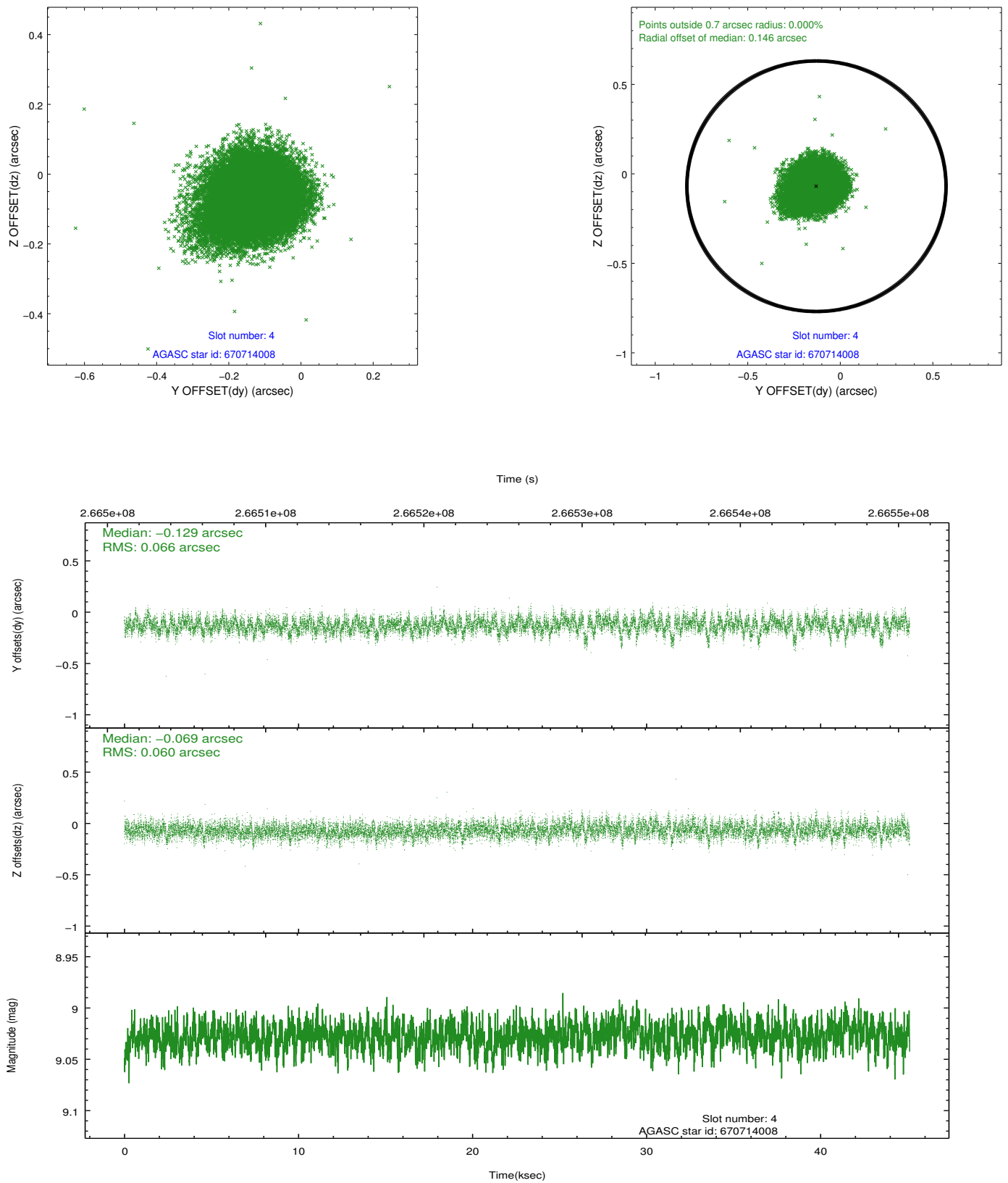
slot	status	id	mag	n_pts	med_dy	med_dz	dr1	dr2	ra	dec	mean_y	mean_z
0	FID	ACIS-S-1	7.19	11005	0.070	-0.080	0.017	0.031	0.000000	0.000000	934.15	-1728.48
1	FID	ACIS-S-5	7.24	11005	-0.141	0.033	0.016	0.028	0.000000	0.000000	-1815.02	169.24
2	FID	ACIS-S-6	7.35	11006	0.048	0.062	0.019	0.051	0.000000	0.000000	399.73	813.18
3	GUIDE	670704648	8.71	22005	-0.086	0.009	0.063	0.103	280.736676	-2.935747	2253.33	2240.79
4	GUIDE	670714008	9.03	21990	-0.129	-0.069	0.093	0.155	281.129237	-3.153193	718.65	1741.53
5	GUIDE	670829600	8.62	22006	-0.005	0.220	0.069	0.109	282.227270	-3.031765	-1653.72	-1443.05
6	GUIDE	670830264	8.75	21999	0.111	-0.060	0.074	0.117	281.361536	-3.231556	-56.93	1322.82
7	GUIDE	670830024	8.33	22004	0.108	-0.098	0.066	0.109	281.863539	-3.639841	-2362.86	1007.82

## 2.4 Star Slots

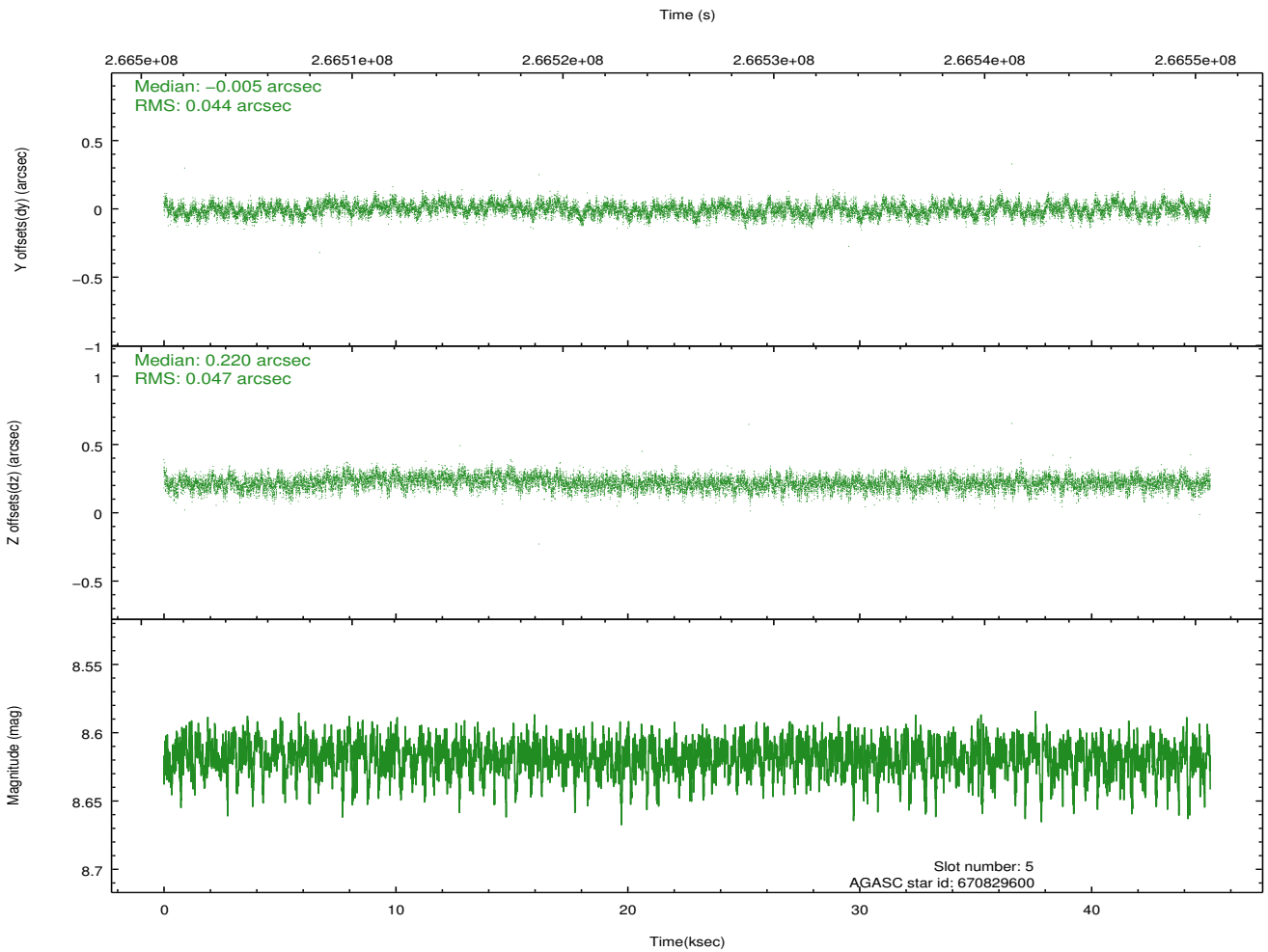
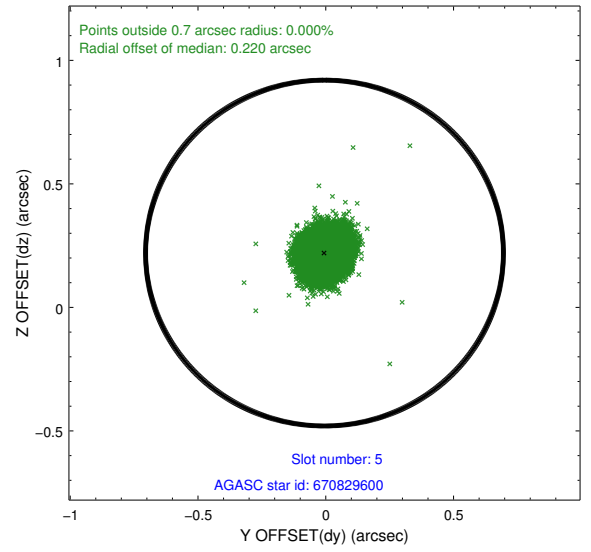
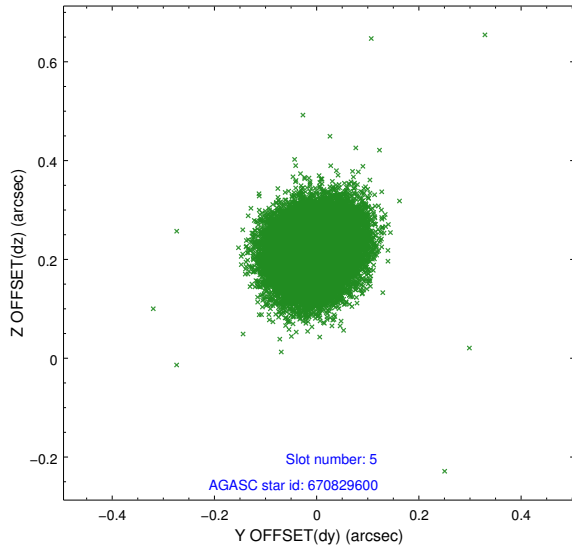
### 2.4.1 Slot 3



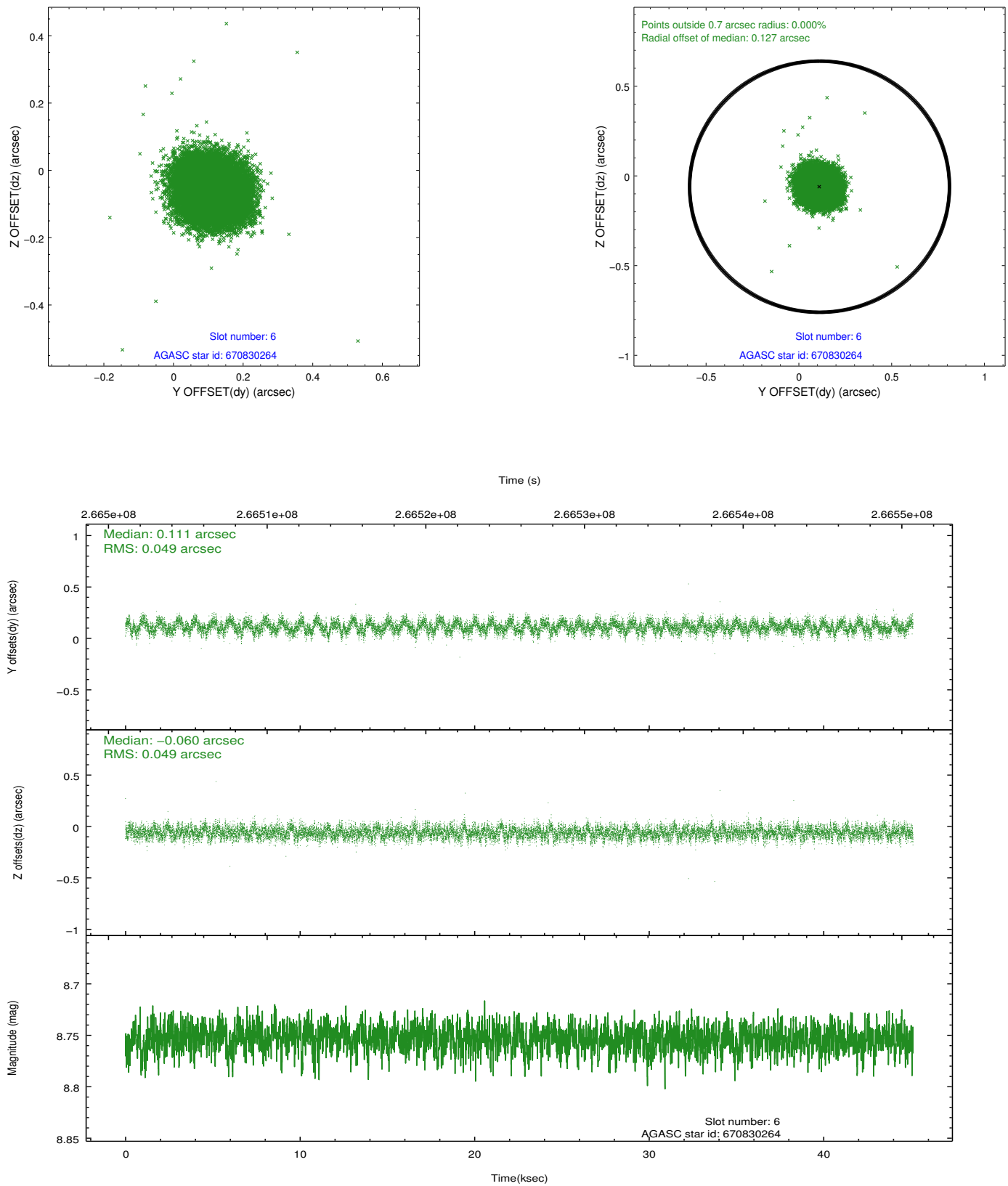
## 2.4.2 Slot 4



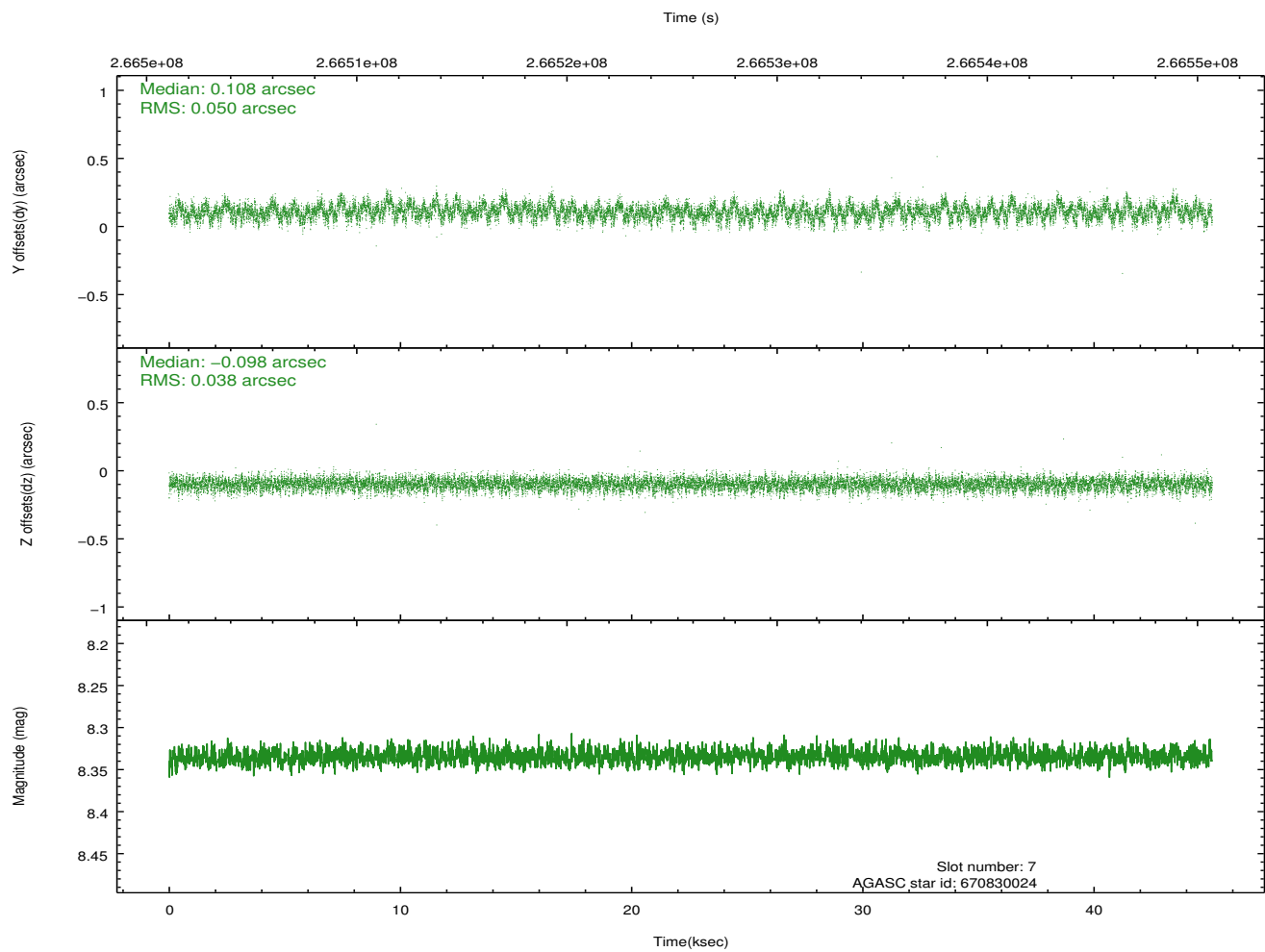
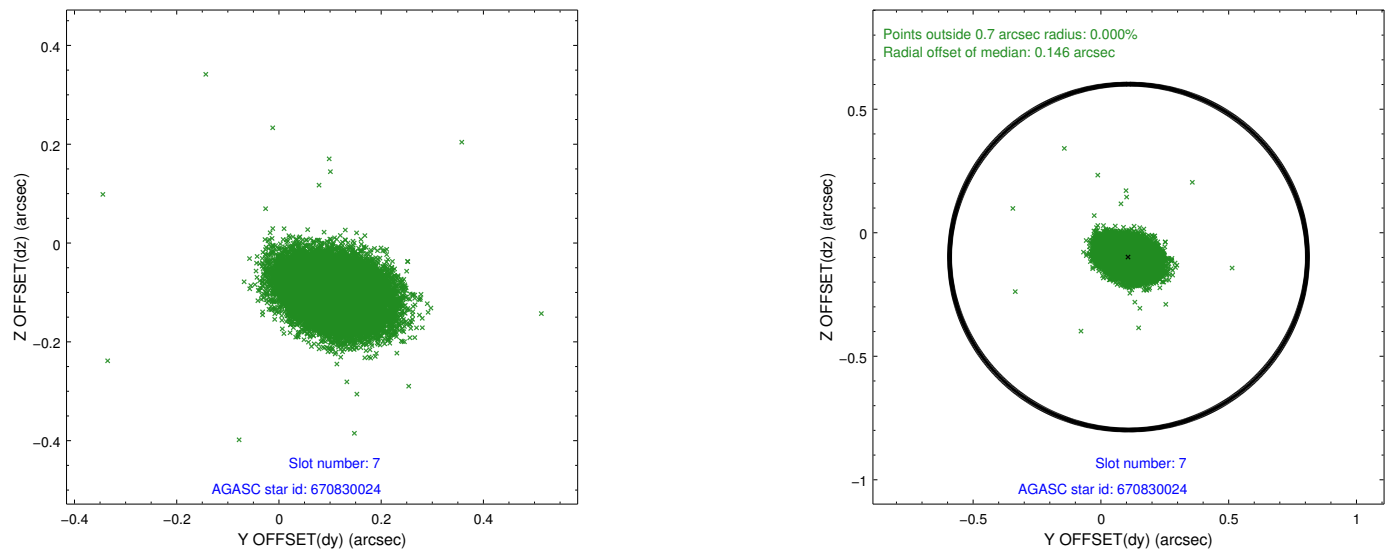
### 2.4.3 Slot 5



## 2.4.4 Slot 6

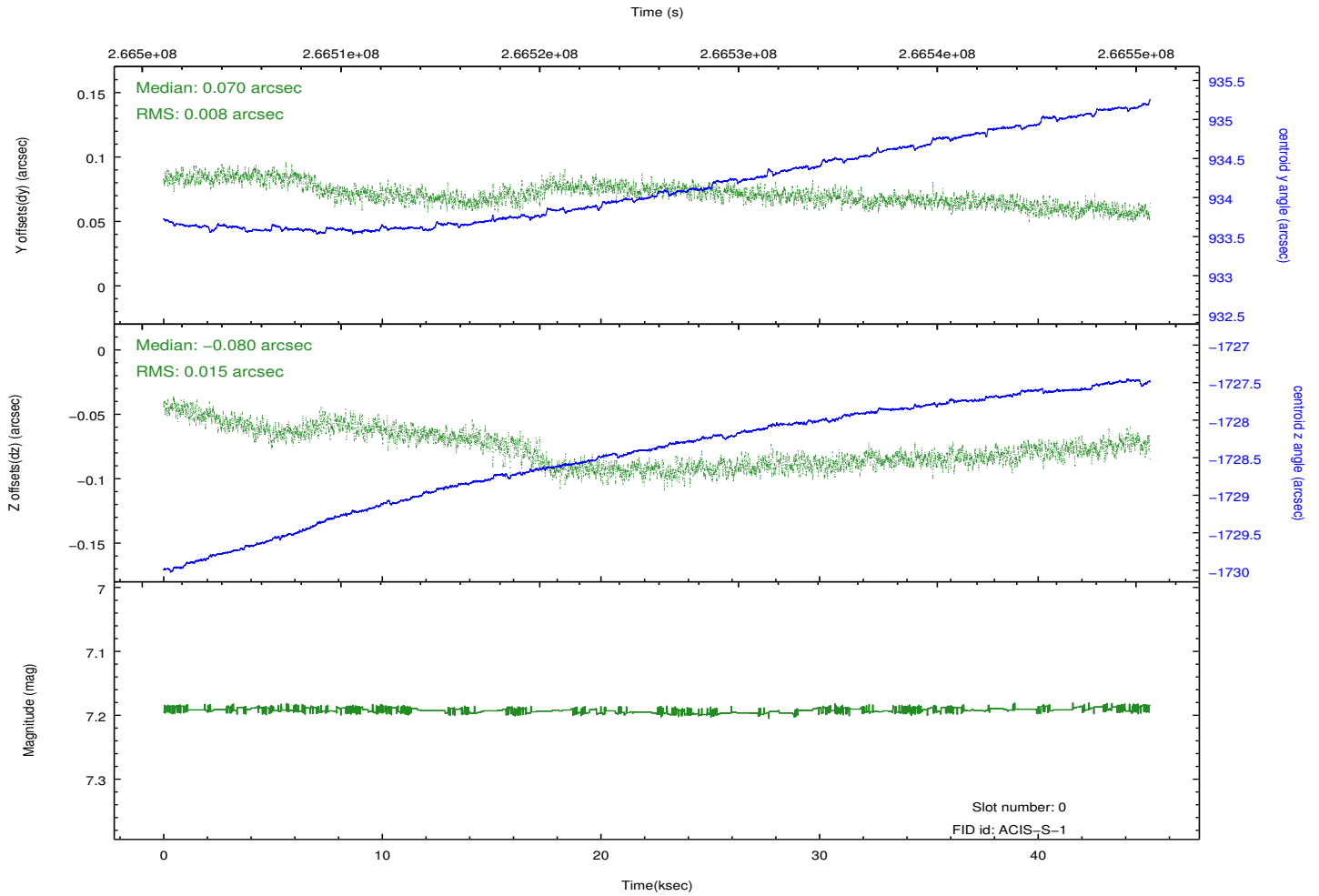
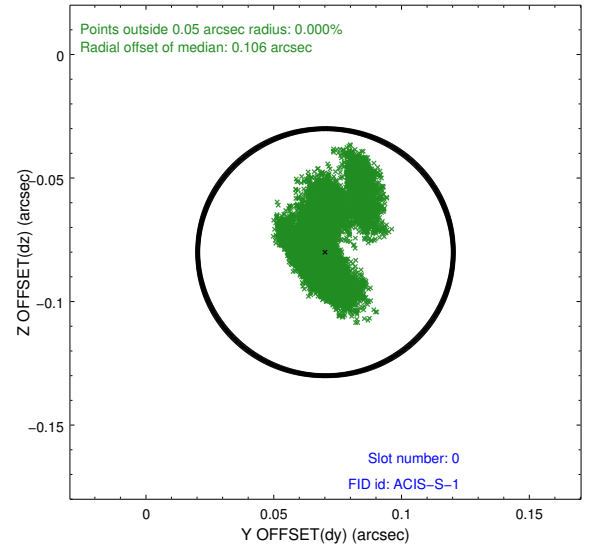
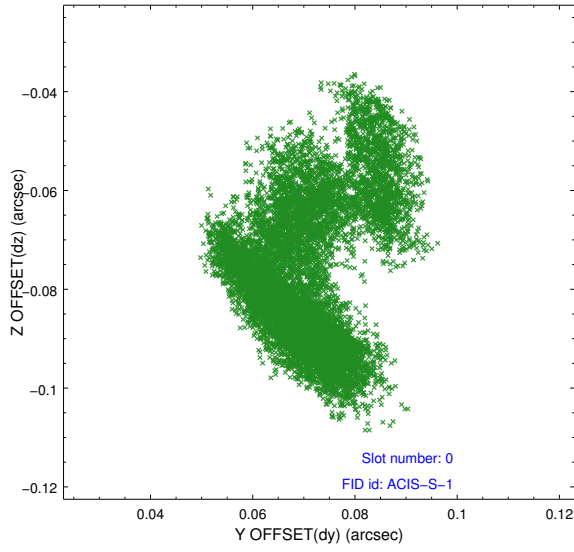


## 2.4.5 Slot 7

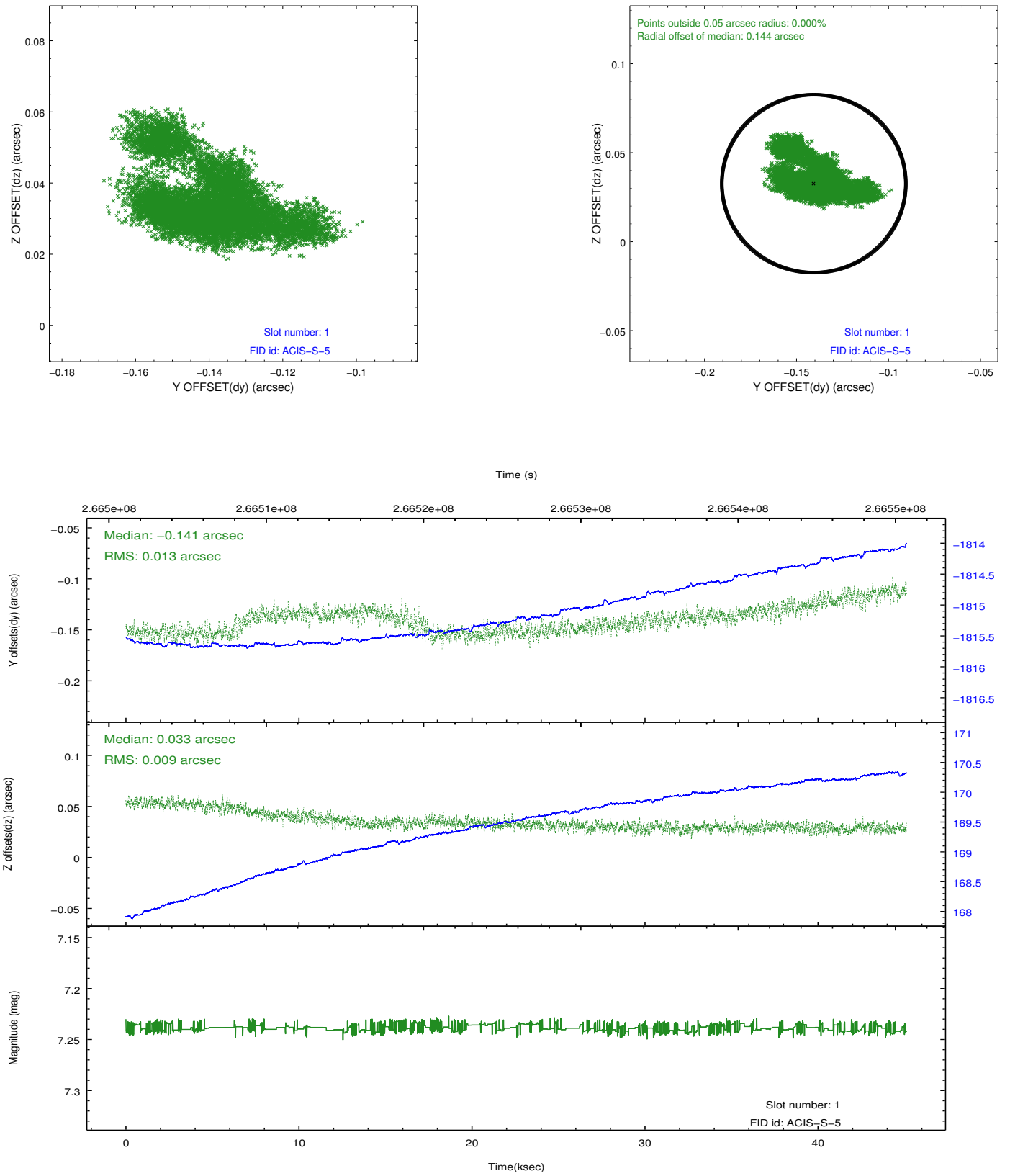


## 2.5 FID Slots

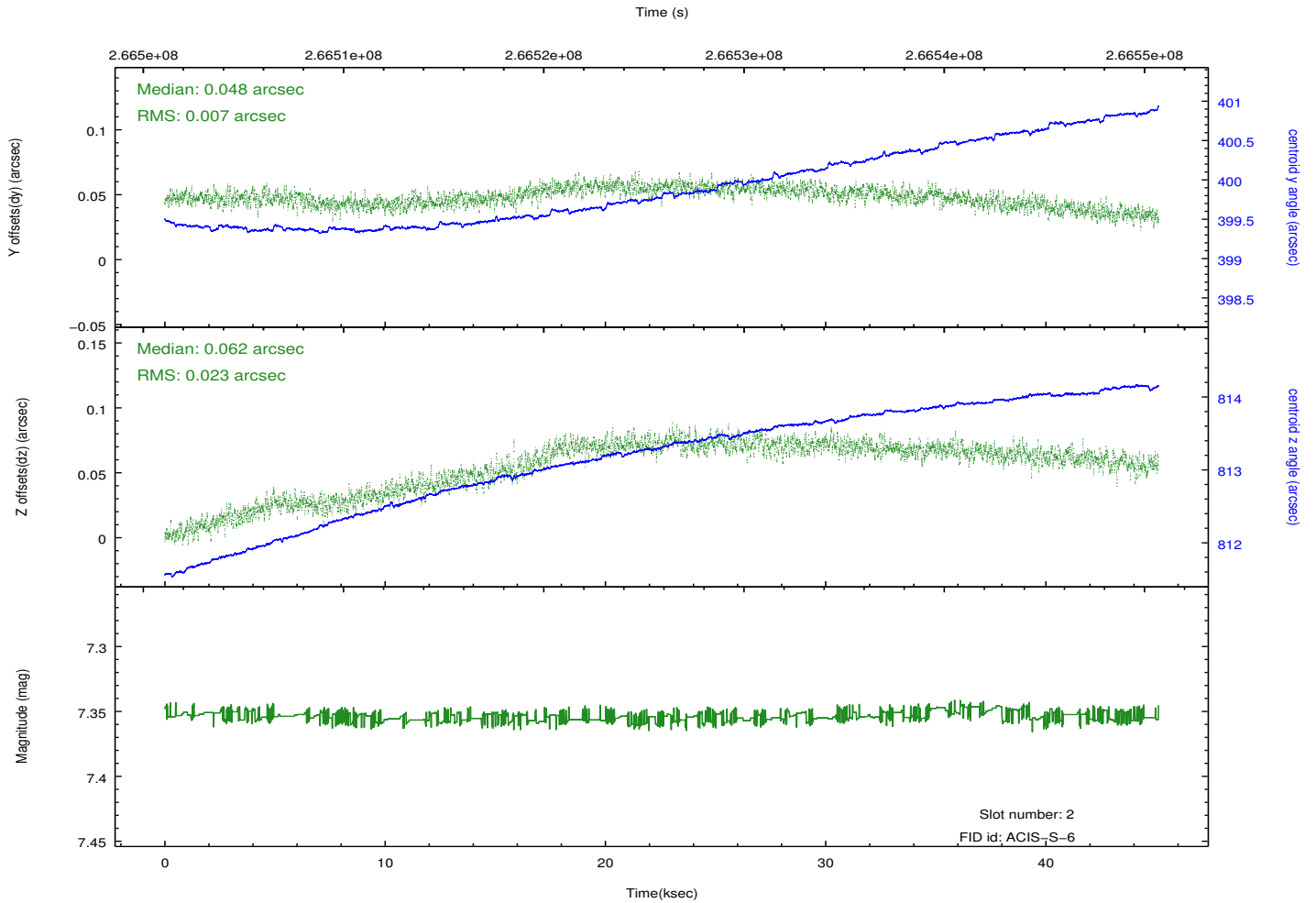
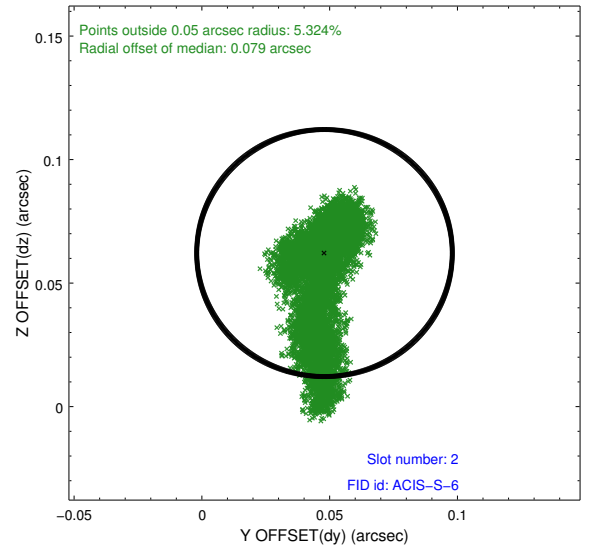
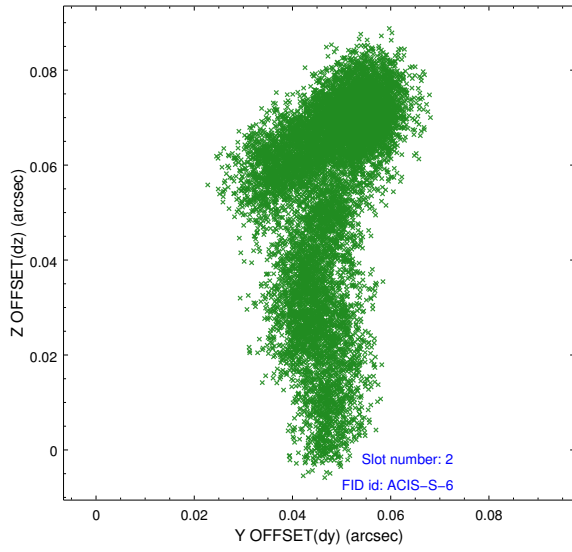
### 2.5.1 Slot 0



## 2.5.2 Slot 1



### 2.5.3 Slot 2



# A Summary

## A.1 Status

V&V Scientist	Beth Sundheim
V&V Date (YYYY-MM-DD)	2012.04.04
V&V Edition	1
V&V Disposition and Status	OK
V&V Charge Time	45.1206002

## A.2 Comments