

# V&V Reference Report

## L2 ASCDS Version : 8.1.1

Observation 749 - L2 Version 5  
Chandra X-Ray Center

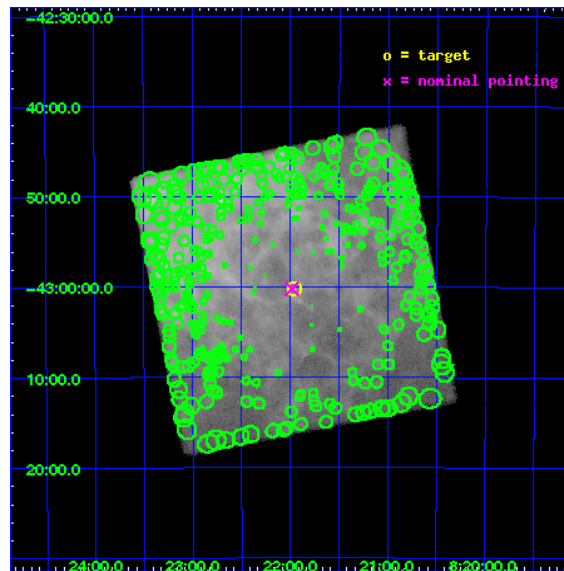
L2 Processing Date : Nov 26 2009

## Contents

<b>1</b>	<b>Front</b>	<b>2</b>
<b>2</b>	<b>OBI</b>	<b>3</b>
2.1	OBI . . . . .	3
2.1.1	Images . . . . .	3
2.1.2	Parameters . . . . .	4
2.1.3	Events . . . . .	4
2.2	Compared Parameters . . . . .	5
2.3	Aspect . . . . .	6
2.4	Star Slots . . . . .	9
2.4.1	Slot 3 . . . . .	9
2.4.2	Slot 4 . . . . .	10
2.4.3	Slot 5 . . . . .	11
2.4.4	Slot 6 . . . . .	12
2.4.5	Slot 7 . . . . .	13
2.5	FID Slots . . . . .	14
2.5.1	Slot 0 . . . . .	14
2.5.2	Slot 1 . . . . .	15
2.5.3	Slot 2 . . . . .	16
<b>3</b>	<b>Point Sources</b>	<b>17</b>
<b>A</b>	<b>Summary</b>	<b>18</b>
A.1	Status . . . . .	18
A.2	Comments . . . . .	18

# 1 Front

seq_num	500045	Sequence number
obs_id	749	Observation id
title	RADIO-SILENT NEUTRON STARS IN SUPERNOVA REMNANTS	Proposal title
observer	Dr. George Pavlov	Principal investigator
object	RX J0822-4300	Source name
ra_targ	125.489583	Observer's specified target RA
dec_targ	-43.004361	Observer's specified target Dec
ra_nom	125.49594188307	Nominal RA
dec_nom	-43.00346345894	Nominal Dec
roll_nom	33.872388800342	Nominal Roll
revision	5	Processing version of data
ontime	18014.119402468	[s]
livetime	9906.5866178255	Ontime multiplied by DTCOR
l2events	3005916	Number of level 2 events

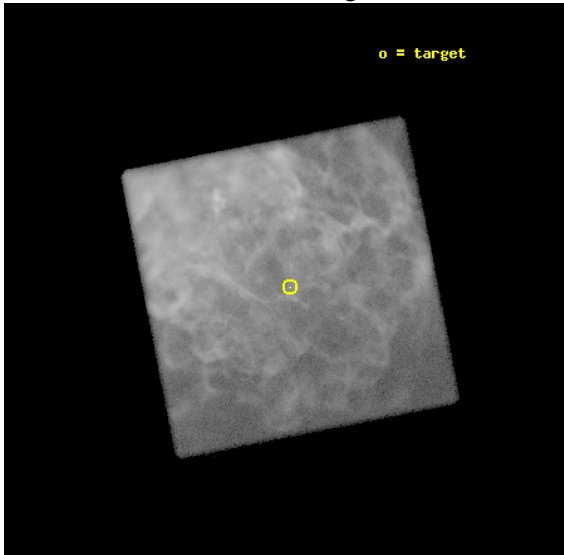


## 2 OBI

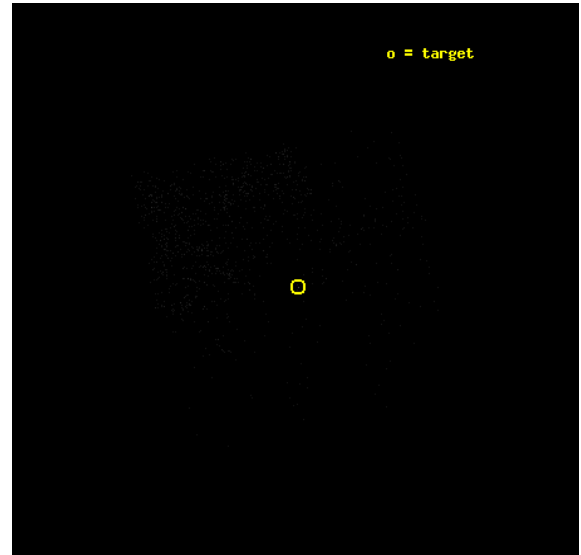
### 2.1 OBI

#### 2.1.1 Images

Level 1 Image



Level 1 Bad Events



## 2.1.2 Parameters

obi_num	0	Obi number	sched_exp_time	17800.000000	Scheduled observation exposure time
ascdsver	8.1.1	Processing system revision	ontime	18014.119402468	[s]
caldbver	4.1.4	&#160	ll events	3330494	Number of level 1 events
date	2009-11-26T07:48:22	Date and time of file creation			
revision	4	Processing version of data			

## 2.1.3 Events

### Level 1 Events

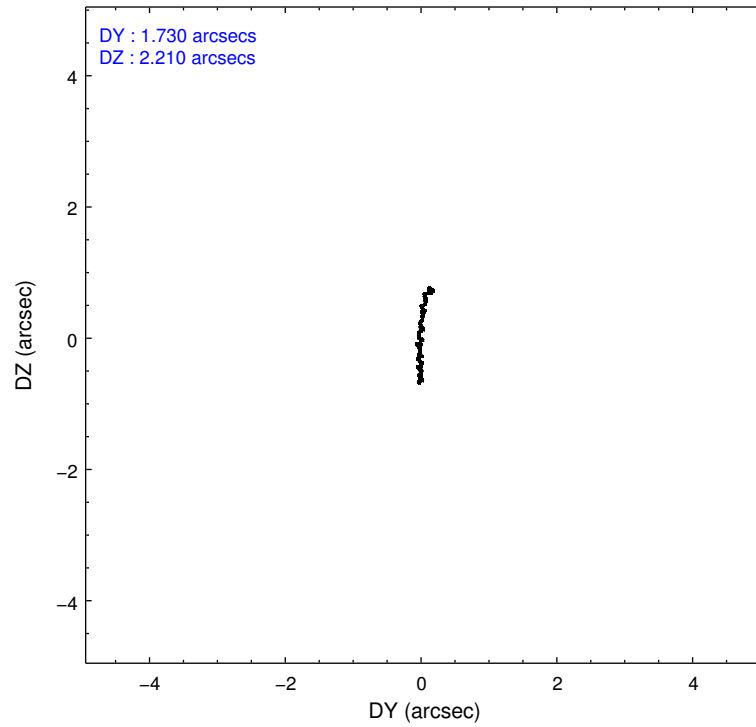
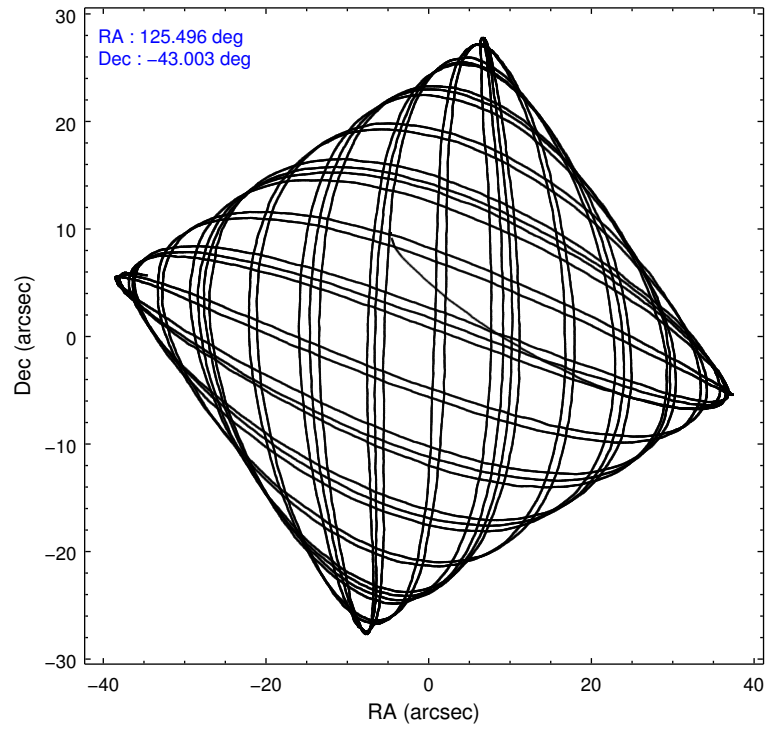
	<b>segment 0</b>
level 1 events	3330494
rejected events	8872
rejected %	0%

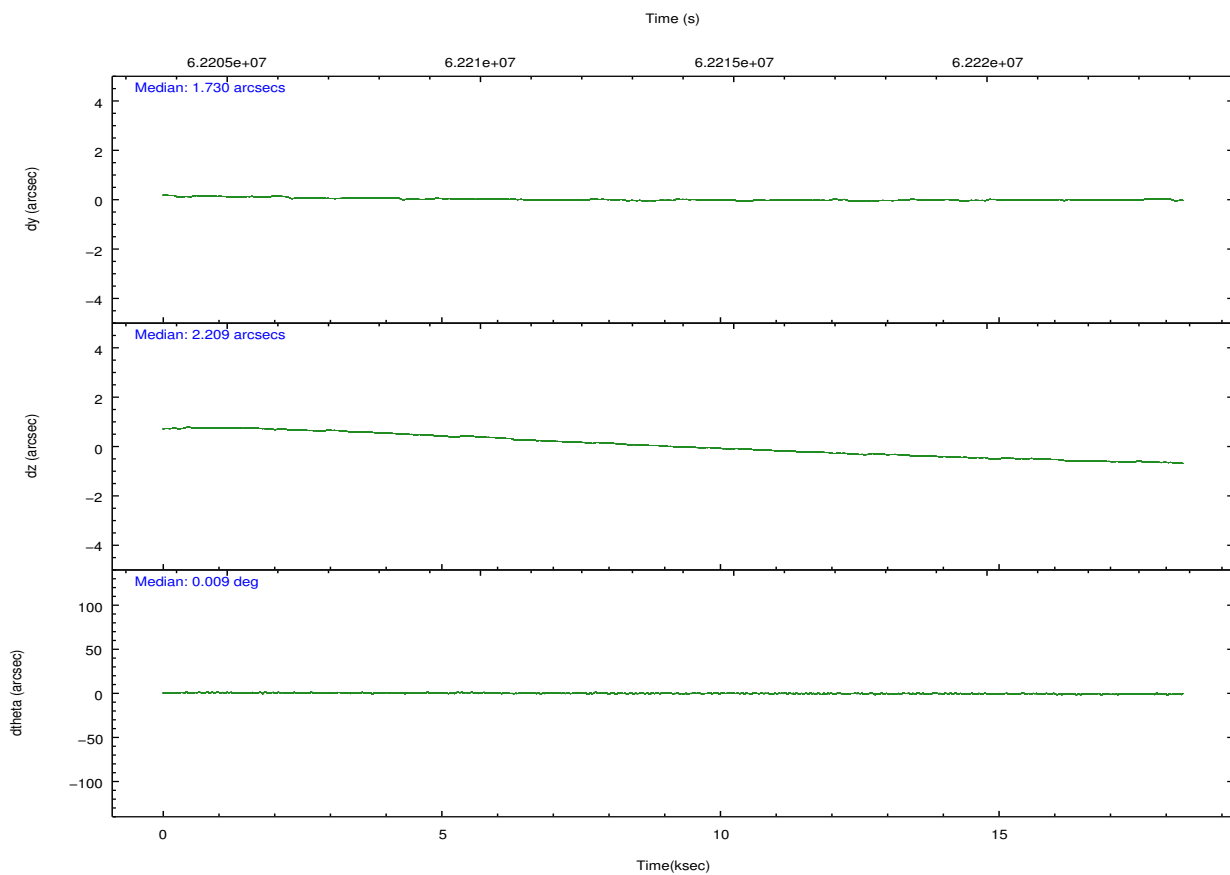
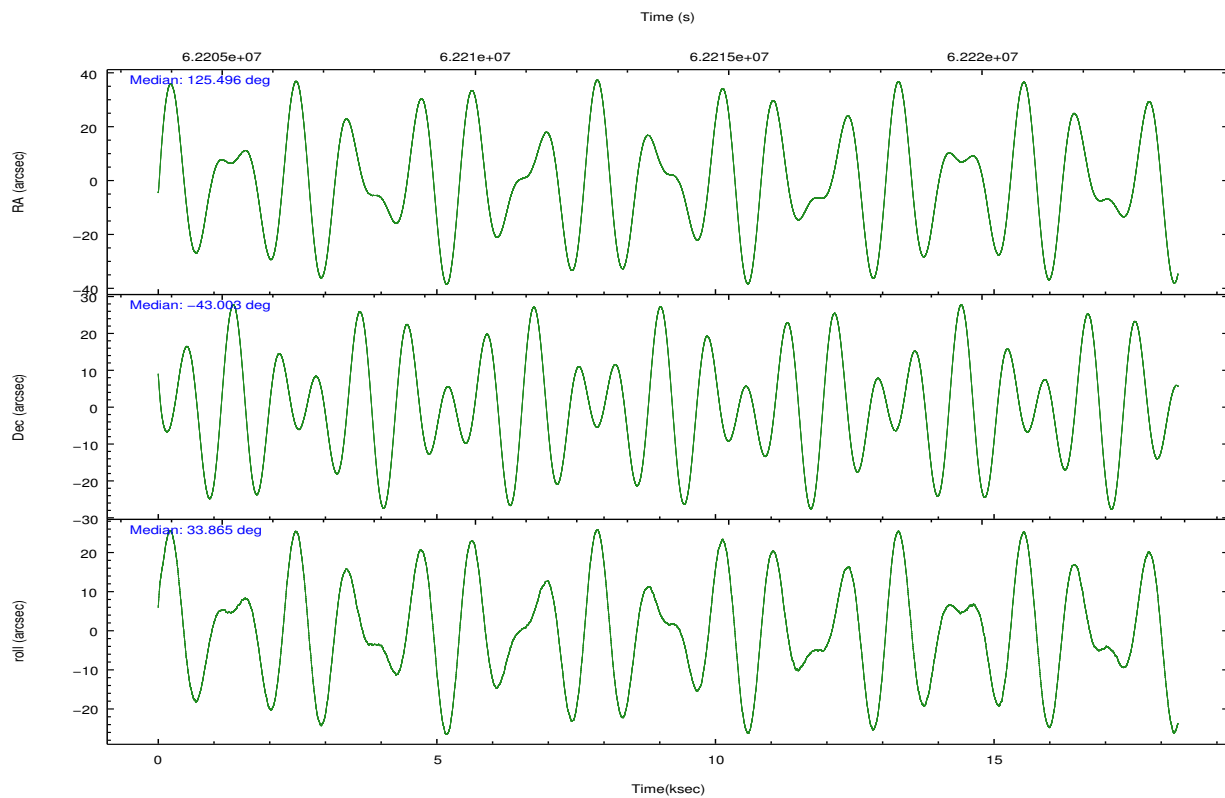
## 2.2 Compared Parameters

Parameter	Planned	Actual
Instrument	HRC	HRC
Detector	HRC-I	HRC-I
Grating	NONE	NONE
Data mode	OBSERVING	OBSERVING
Observation mode	POINTING	POINTING
Pointing RA	125.479619	125.4959418830725
Pointing Dec	-43.028154	-43.00346345893995
Pointing Roll	33.956731	33.87238880034202
SIM focus pos (mm)	-1.040293	-1.038866356238299
SIM defocus (mm)	0	0.001426264420575141
SIM translation stage pos (mm)	126.985494	126.9854943052878
SIM translation stage offset (mm)	0	-5.413686238853188e-06
Observation start time	62205151.184000	62203918.203932
Observation start date	1999-12-21T23:11:27	1999-12-21T22:51:58
Observation end time	62222951.184000	62224062.529661
Observation end date	1999-12-22T04:08:07	1999-12-22T04:27:42

Parameter	Planned	Actual
Obspar format version number	6	6
Obspar file type	PREDICTED	ACTUAL
Obspar update status	NONE	UPDATED

## 2.3 Aspect



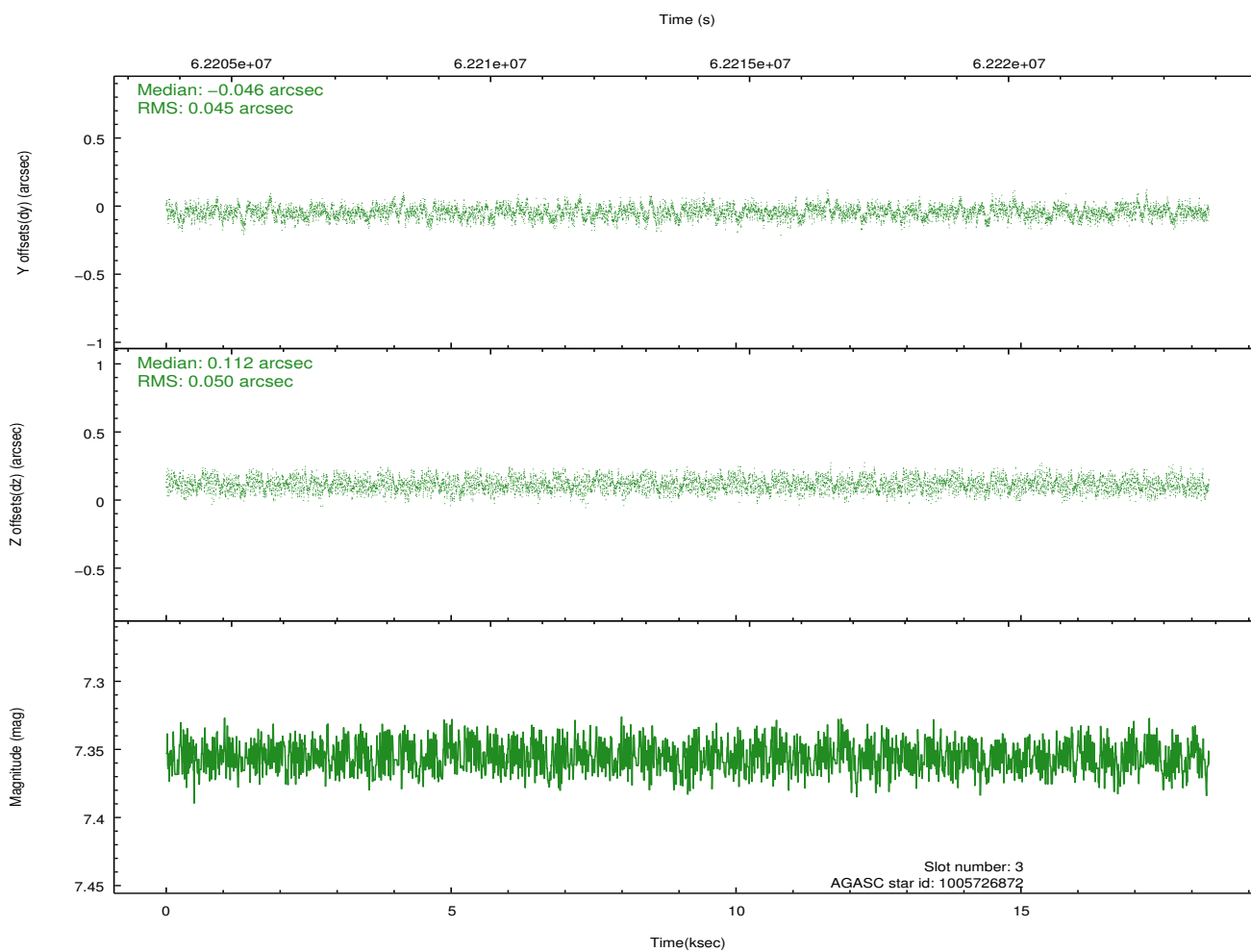
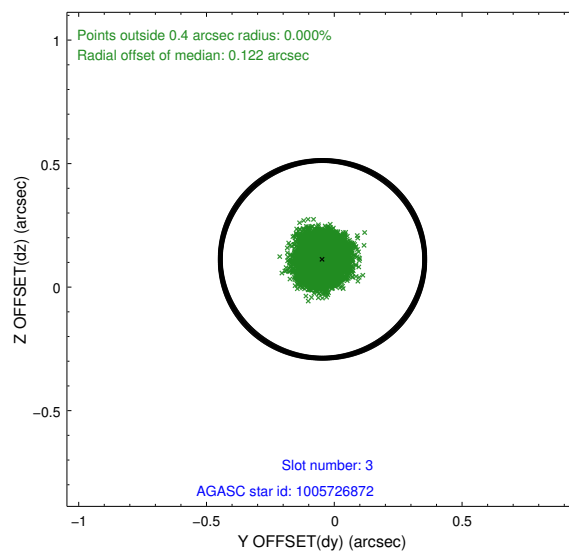
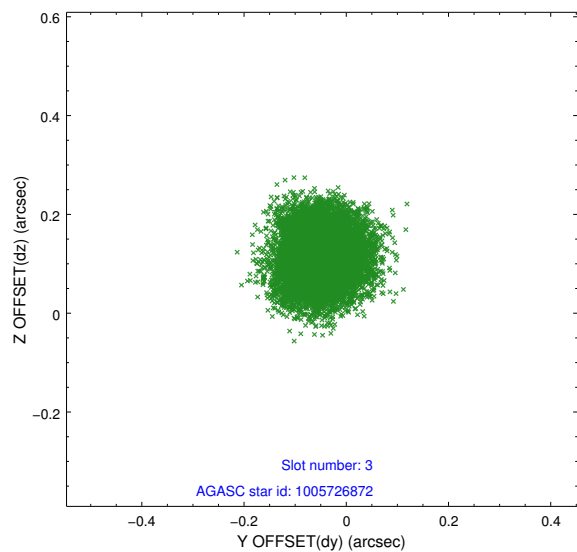


### Slot Statistics

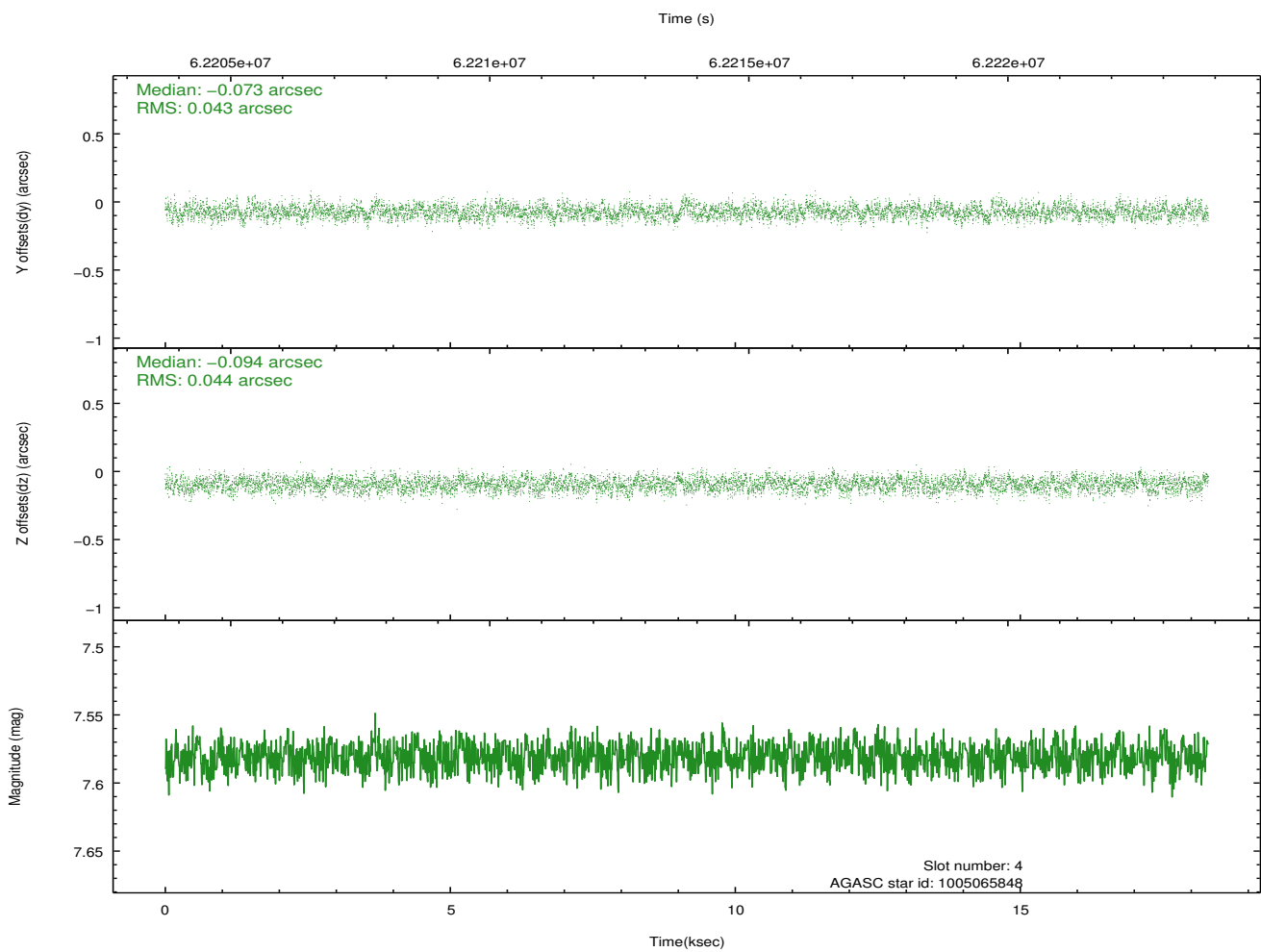
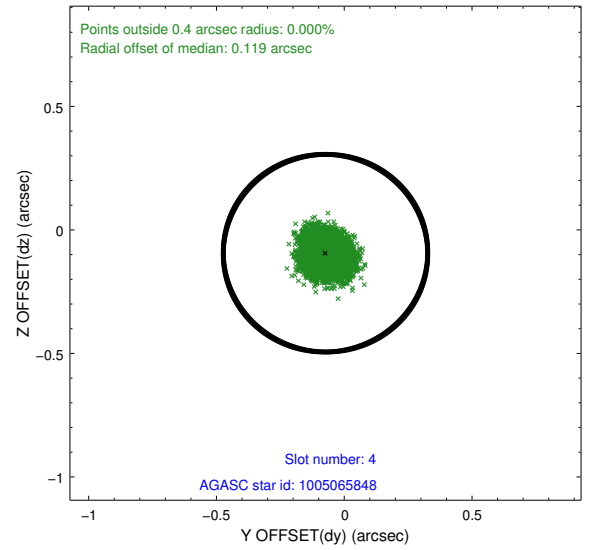
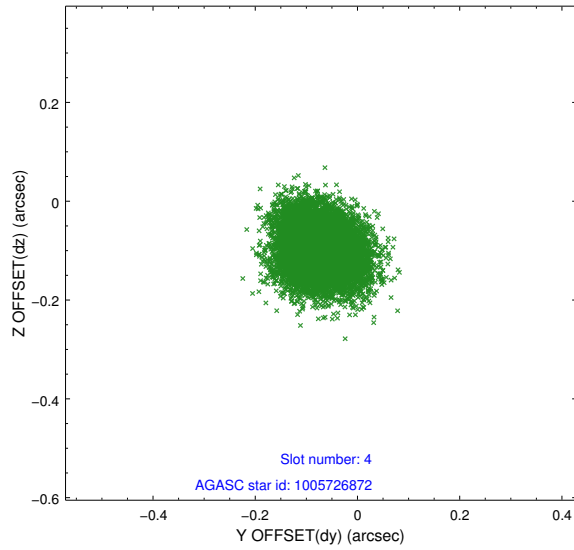
slot	status	id	mag	n_pts	med_dy	med_dz	dr1	dr2	ra	dec	mean_y	mean_z
0	FID	HRC-I-1	6.95	8928	0.042	-0.055	0.017	0.027	0.000000	0.000000	-757.15	-1290.06
1	FID	HRC-I-3	7.04	8928	0.044	-0.008	0.007	0.013	0.000000	0.000000	-1185.72	1014.40
2	FID	HRC-I-4	6.98	8926	0.029	-0.030	0.014	0.021	0.000000	0.000000	1285.50	1012.24
3	GUIDE	1005726872	7.36	8927	-0.046	0.112	0.072	0.113	125.535449	-43.662820	-1155.38	-1976.62
4	GUIDE	1005065848	7.58	8925	-0.073	-0.094	0.066	0.106	124.947854	-42.722303	-554.37	1694.62
5	GUIDE	1005723560	8.44	8925	0.018	0.117	0.100	0.159	126.279097	-43.364629	1053.72	-2181.47
6	GUIDE	1005195176	8.74	8925	0.011	-0.025	0.109	0.175	125.977053	-42.554964	2043.62	672.79
7	GUIDE	1005076768	9.19	8924	0.090	-0.110	0.136	0.211	124.712041	-42.753151	-1135.08	1946.51

## 2.4 Star Slots

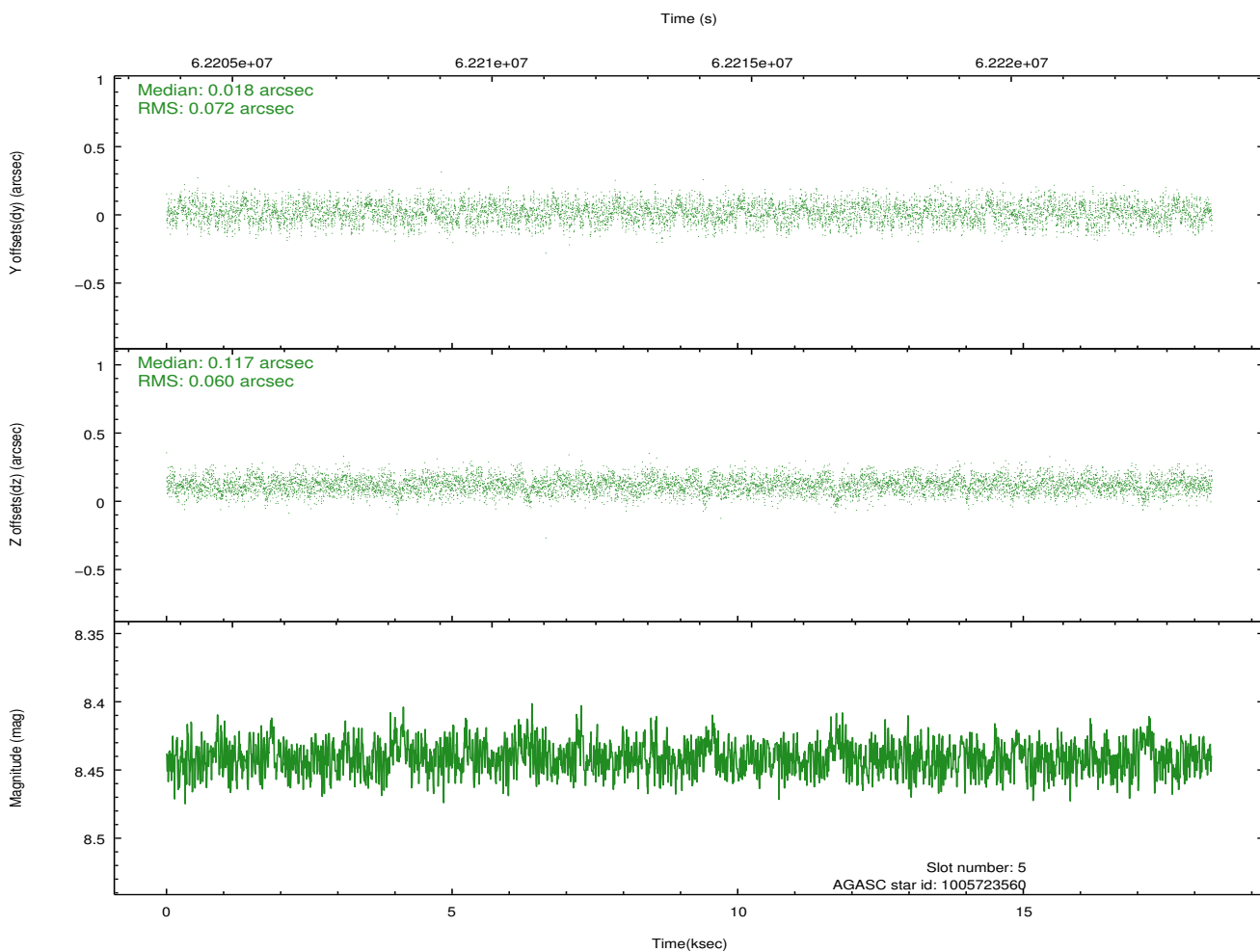
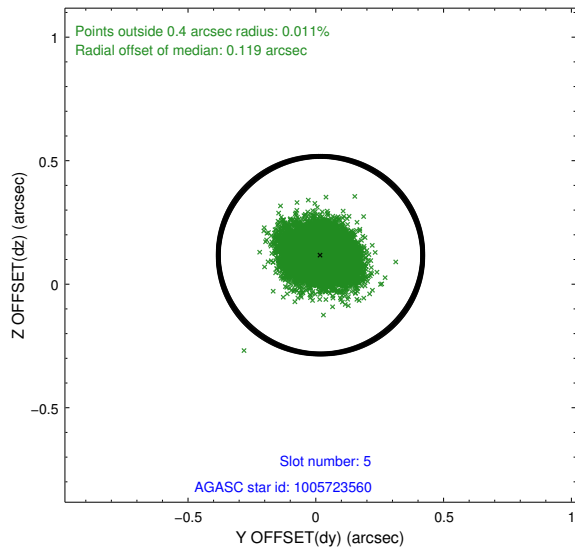
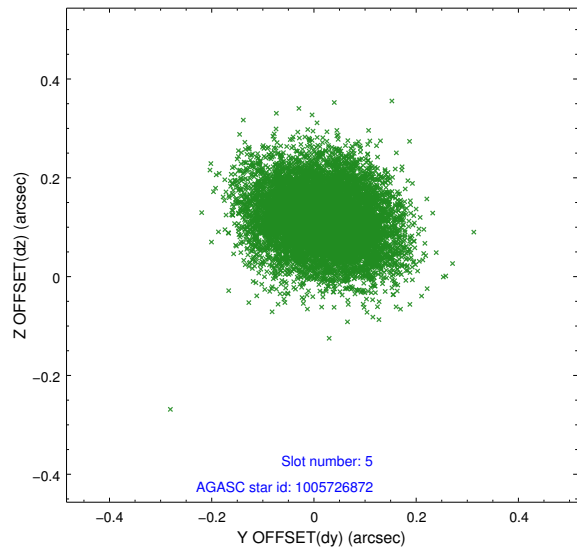
### 2.4.1 Slot 3



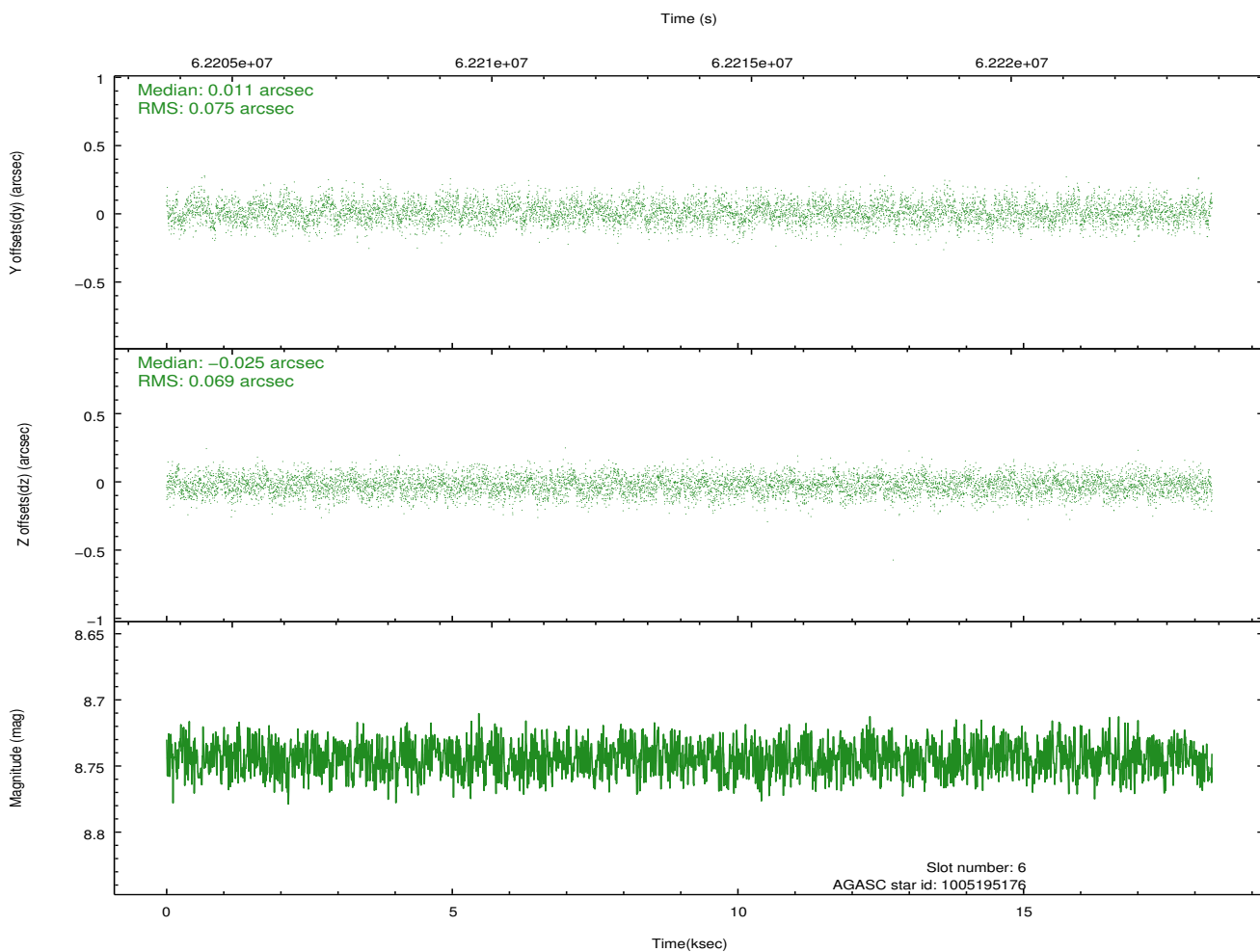
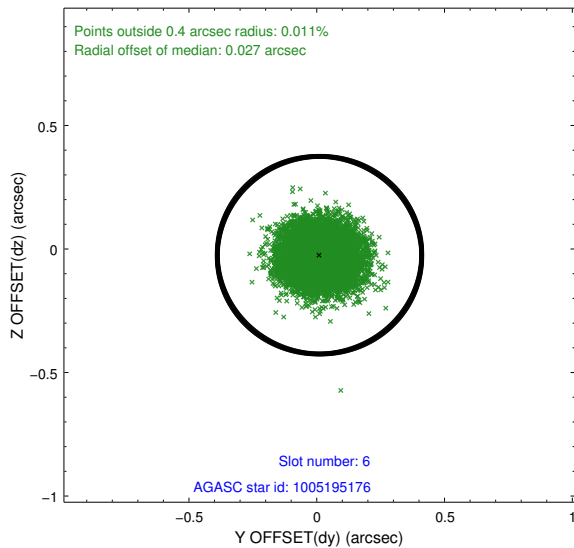
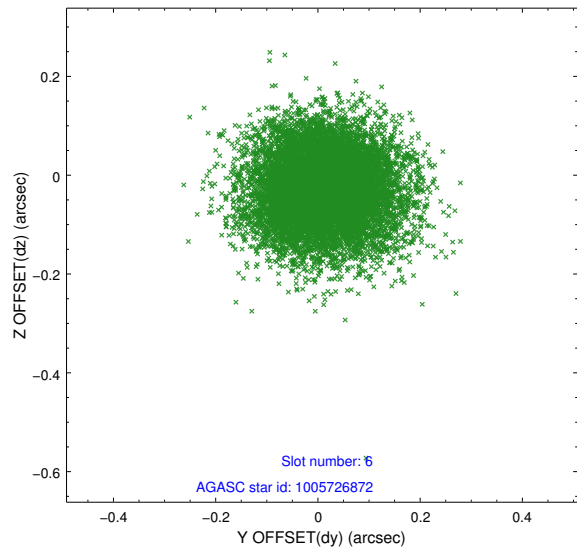
## 2.4.2 Slot 4



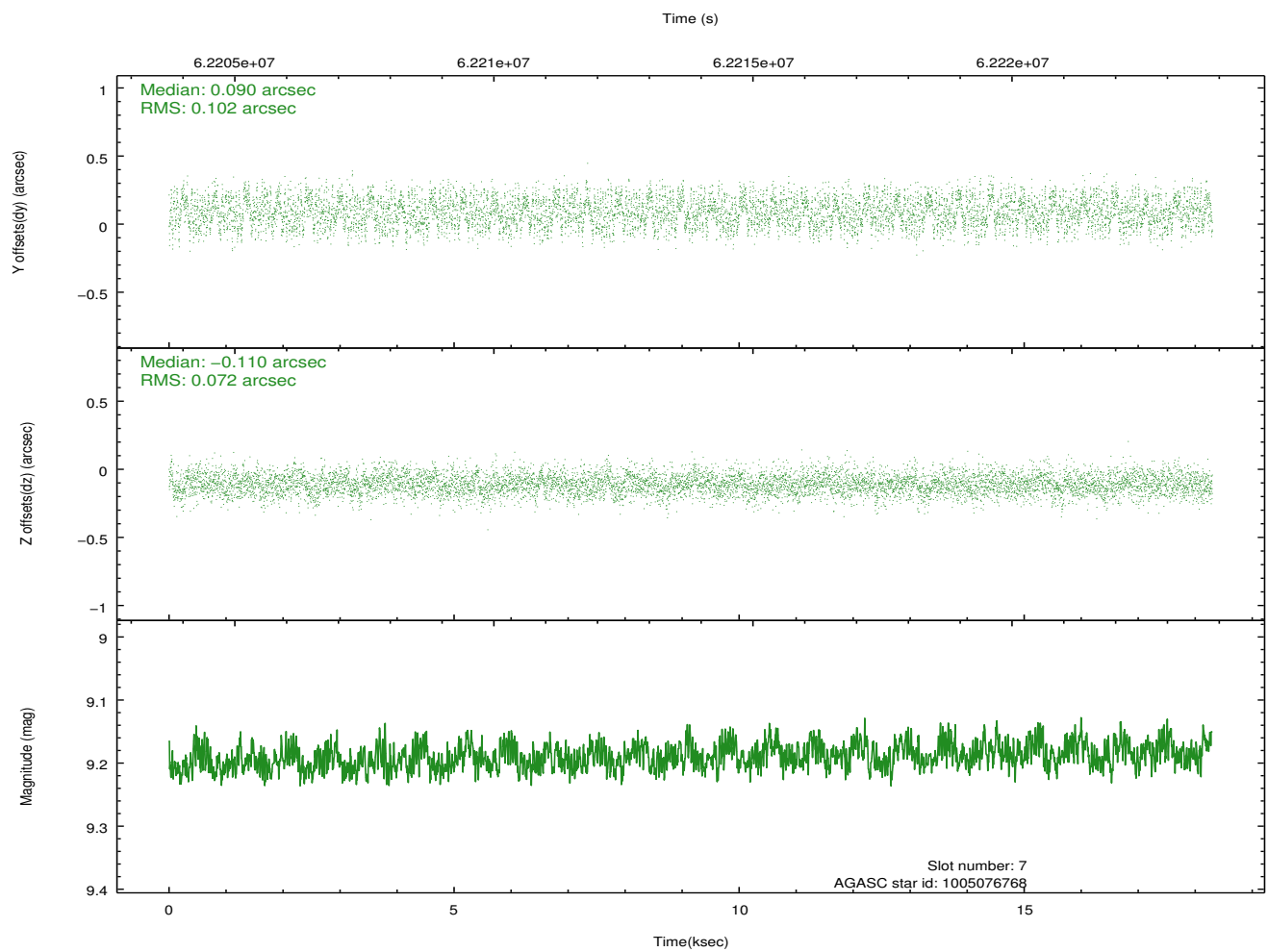
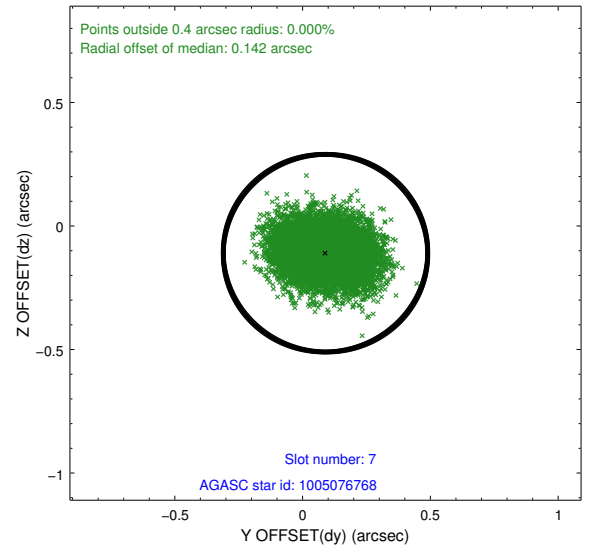
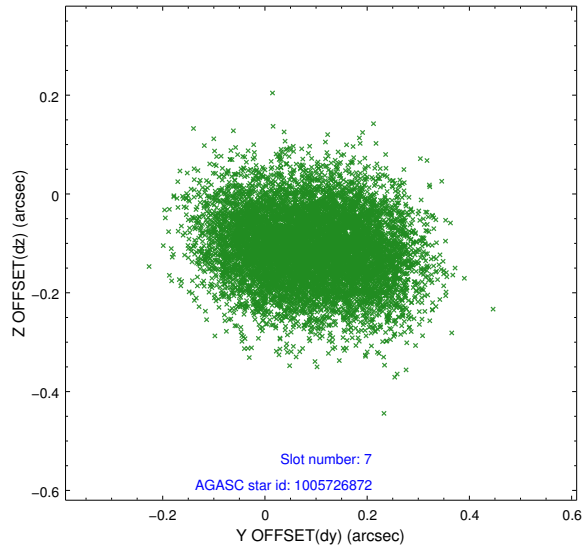
### 2.4.3 Slot 5



## 2.4.4 Slot 6

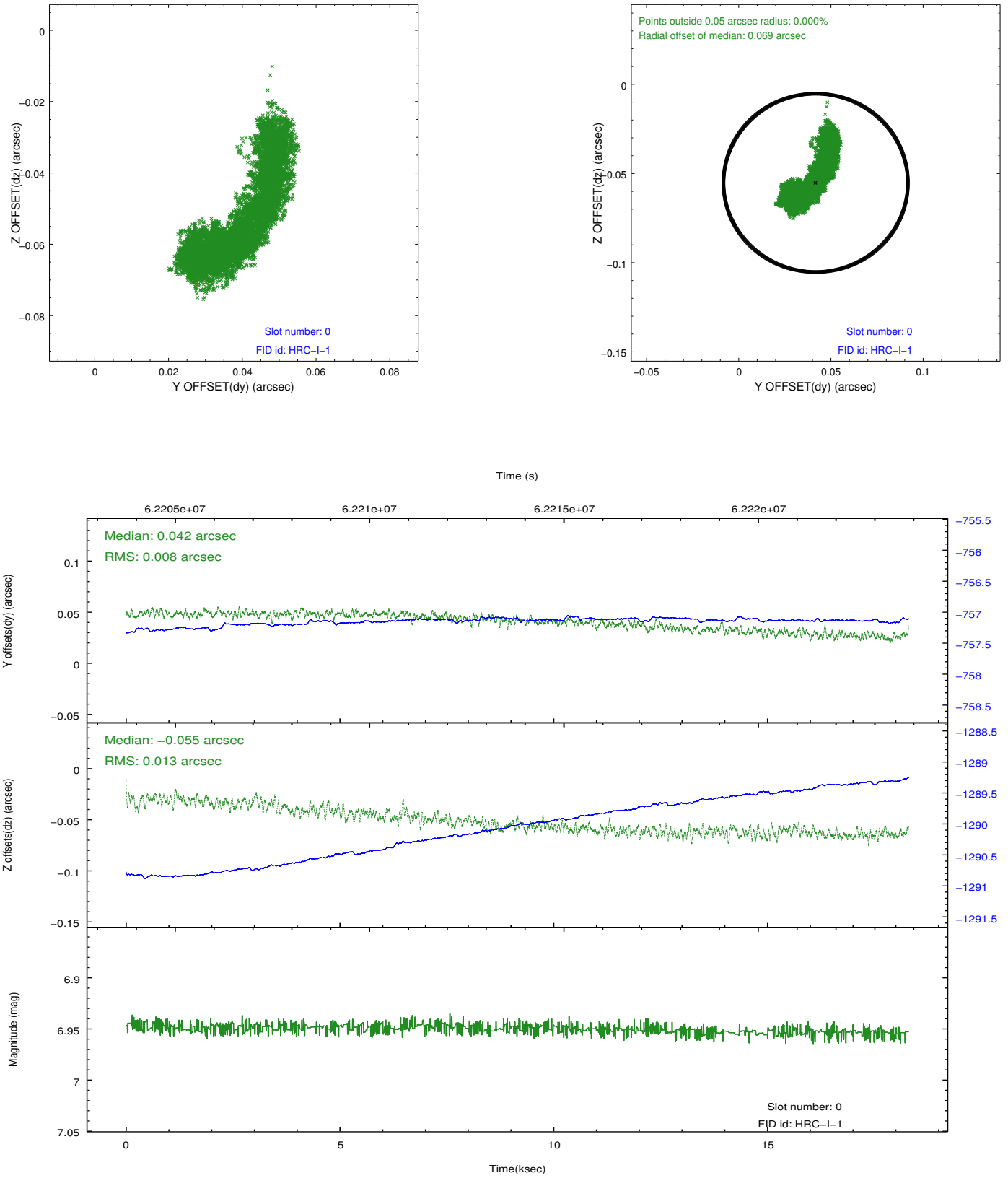


## 2.4.5 Slot 7

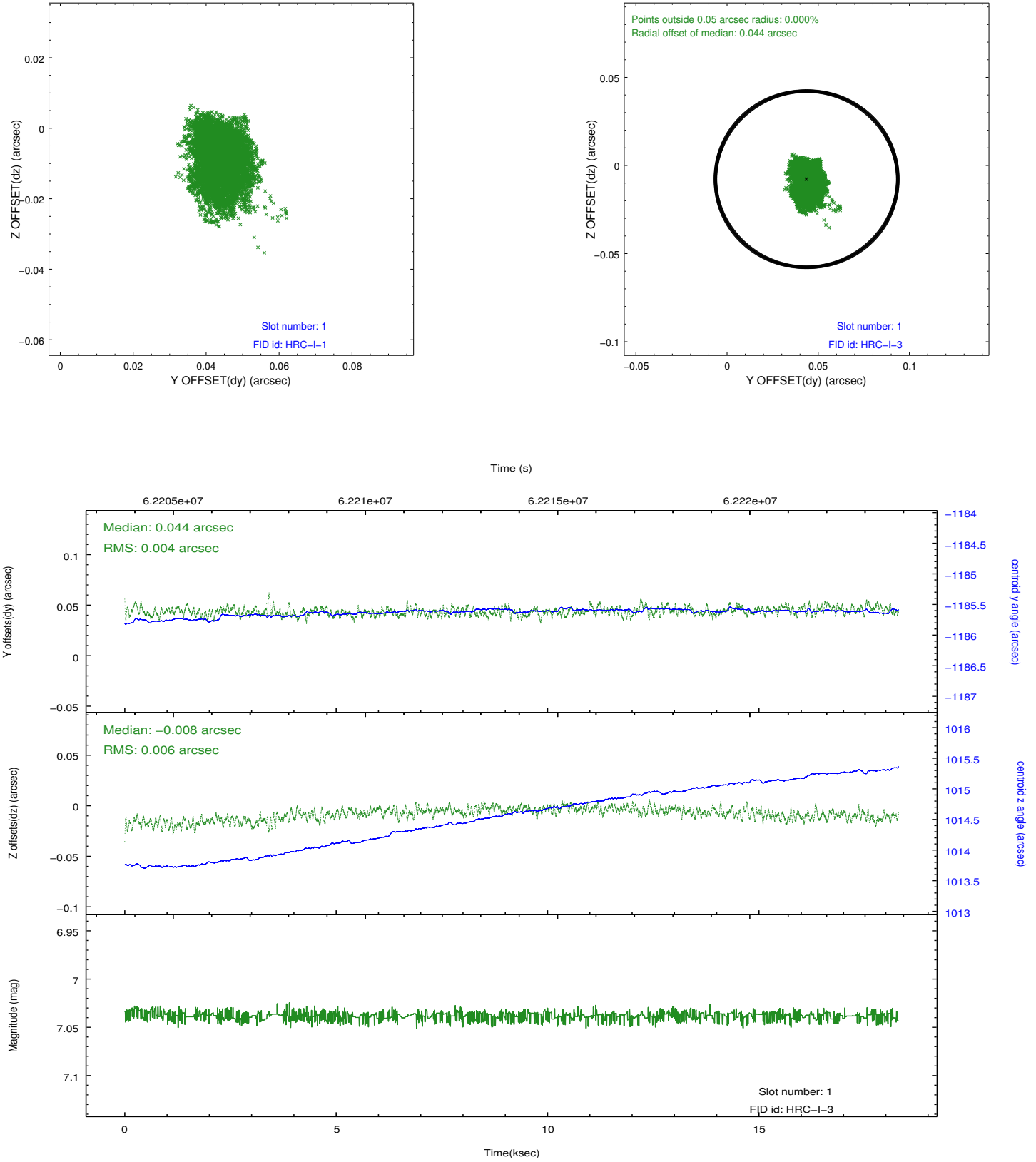


## 2.5 FID Slots

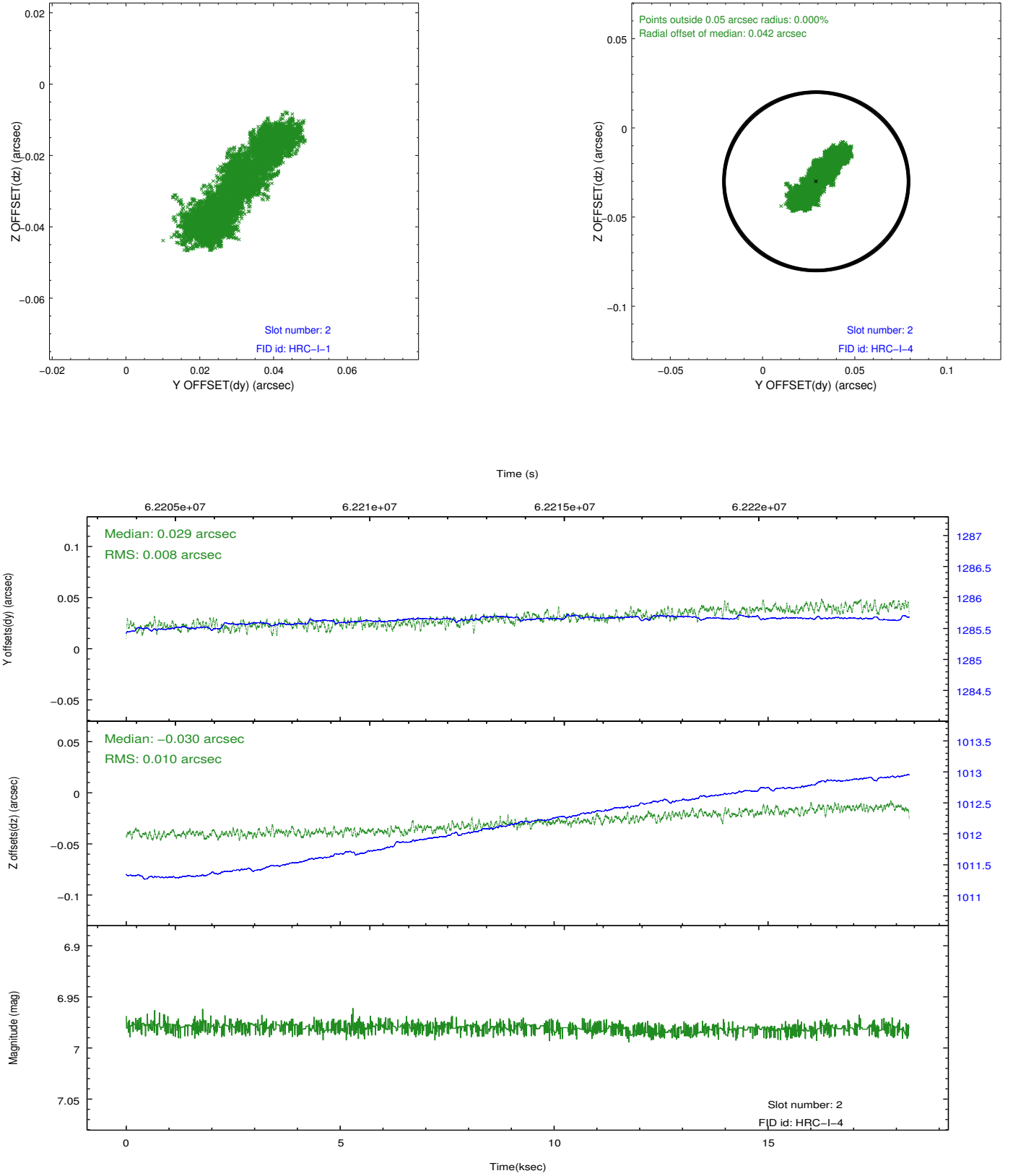
### 2.5.1 Slot 0



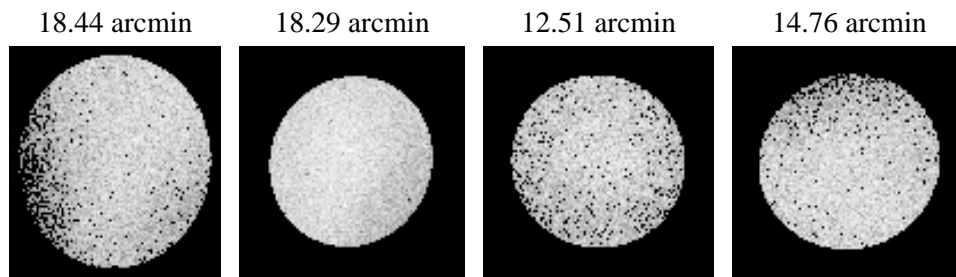
## 2.5.2 Slot 1



### 2.5.3 Slot 2



### 3 Point Sources



# A Summary

## A.1 Status

V&V Scientist	Jen Lauer
V&V Date (YYYY-MM-DD)	2009.11.27
V&V Edition	1
V&V Disposition and Status	OK
V&V Charge Time	18.01

## A.2 Comments