

V&V Reference Report

L2 ASCDS Version : 8.4.5

Observation 759 - L2 Version 5
Chandra X-Ray Center

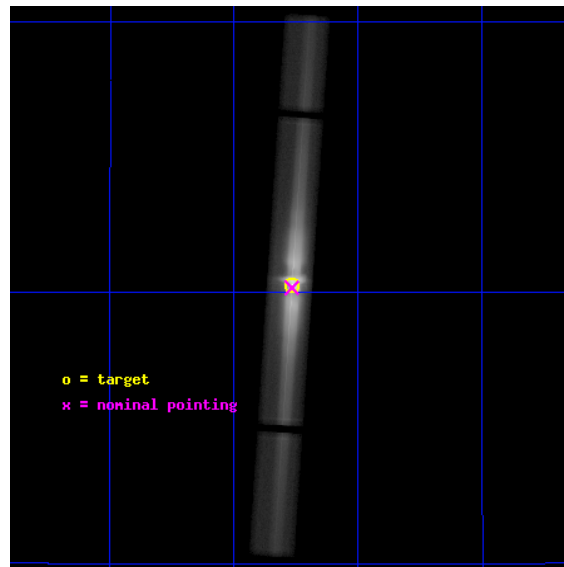
L2 Processing Date : Aug 22 2012

Contents

1	Front	2
2	OBI	3
2.1	OBI	3
2.1.1	Images	3
2.1.2	Parameters	4
2.1.3	Events	4
2.2	Compared Parameters	5
2.3	Aspect	6
2.4	Star Slots	9
2.4.1	Slot 3	9
2.4.2	Slot 4	10
2.4.3	Slot 5	11
2.4.4	Slot 6	12
2.4.5	Slot 7	13
2.5	FID Slots	14
2.5.1	Slot 0	14
2.5.2	Slot 1	15
2.5.3	Slot 2	16
3	Gratings	17
3.1	LETG Arm	17
A	Summary	19
A.1	Status	19
A.2	Comments	19

1 Front

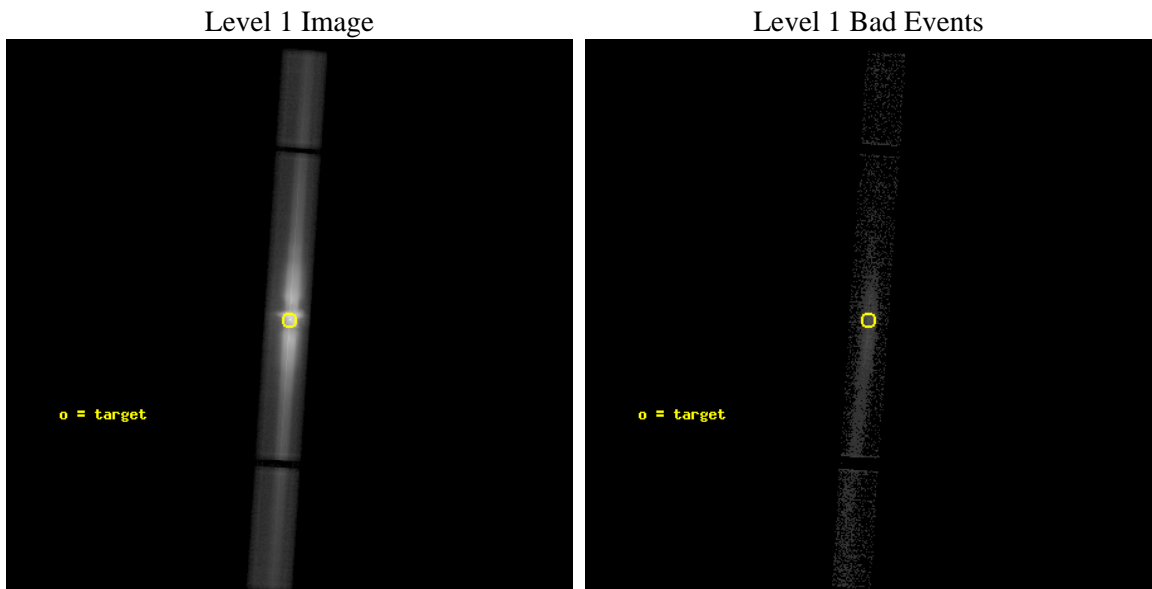
seq_num	500055	Sequence number
obs_id	759	Observation id
title	AXAF OBSERVATIONS OF THE CRAB NEBULA AND PULSAR AND SPECTROSCOPY OF THE INTERSTELLAR MEDIUM	Proposal title
observer	Dr. Martin Weisskopf	Principal investigator
object	CRAB PULSAR	Source name
ra_targ	83.633333	Observer's specified target RA [deg]
dec_targ	22.014444	Observer's specified target Dec [deg]
ra_nom	83.633356986921	Nominal RA [deg]
dec_nom	22.009362004587	Nominal Dec [deg]
roll_nom	273.76185320689	Nominal Roll [deg]
revision	5	Processing version of data
ontime	45443.632903181	[s]
livetime	16944.76988544	Overtime multiplied by DTCOR
l2events	8072410	Number of level 2 events



2 OBI

2.1 OBI

2.1.1 Images



2.1.2 Parameters

obi_num	0	Obi number	sched_exp_time	45000.000000	[s] Scheduled observation exposure time
ascdsver	8.4.5	Processing system revision	ontime	45443.632904179	[s]
caldbver	4.5.1.1	 	l1events	8560391	Number of level 1 events
date	2012-08-22T02:15:58	Date and time of file creation			
revision	5	Processing version of data			

2.1.3 Events

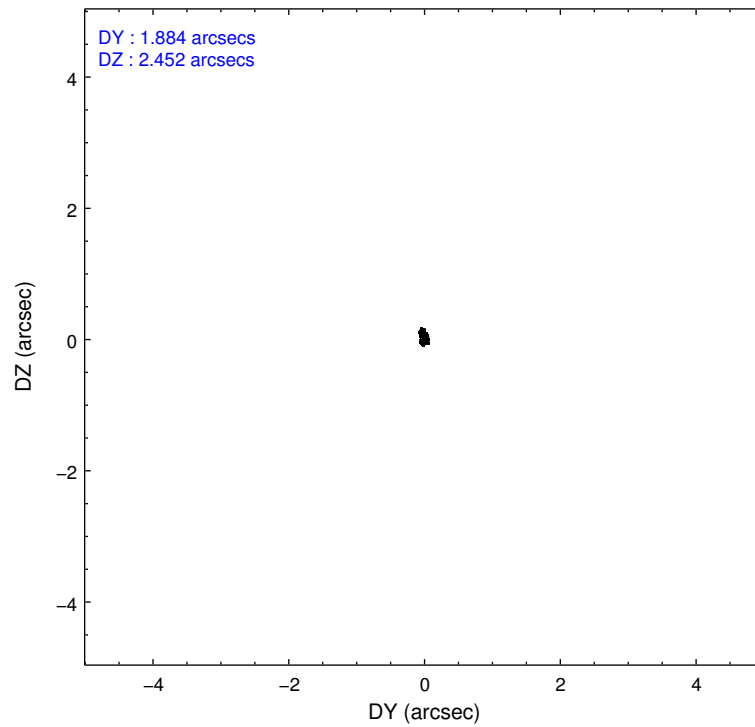
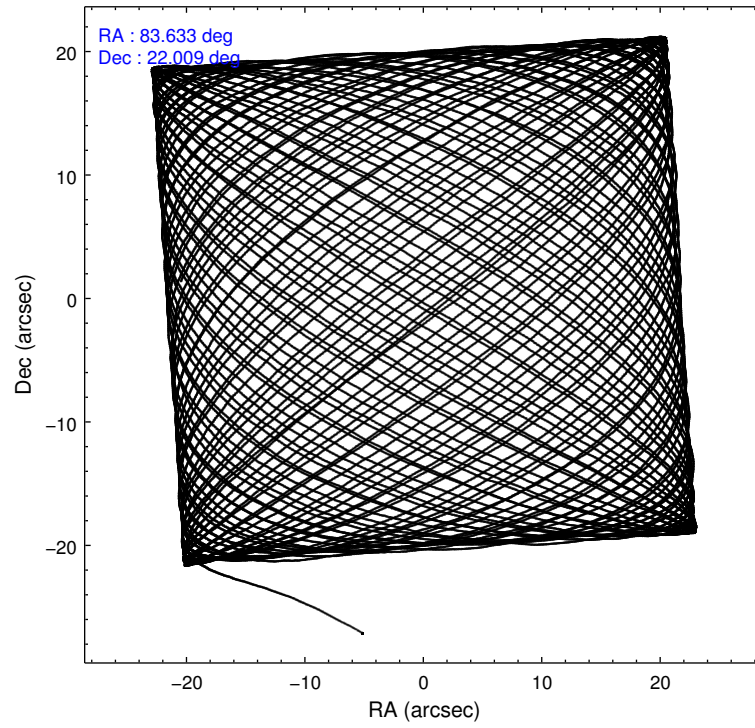
Level 1 Events

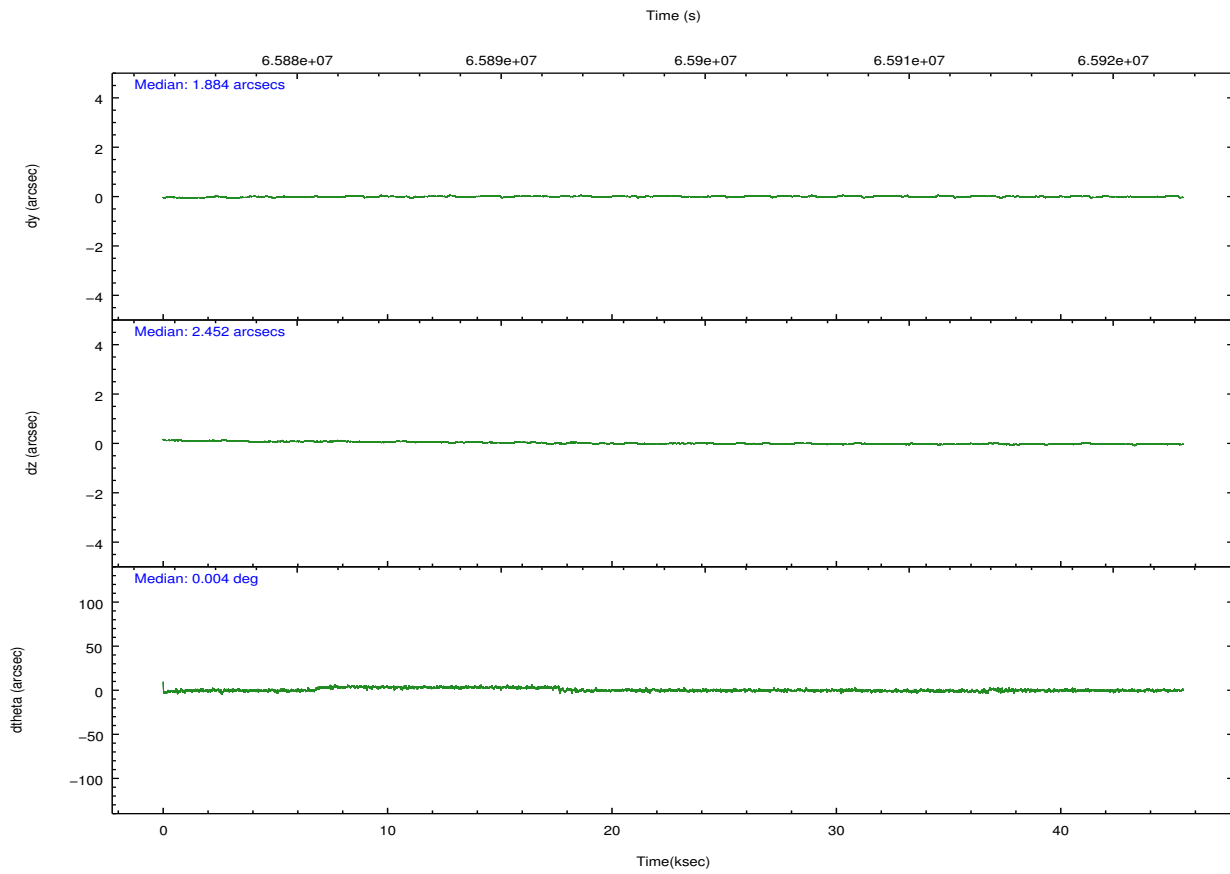
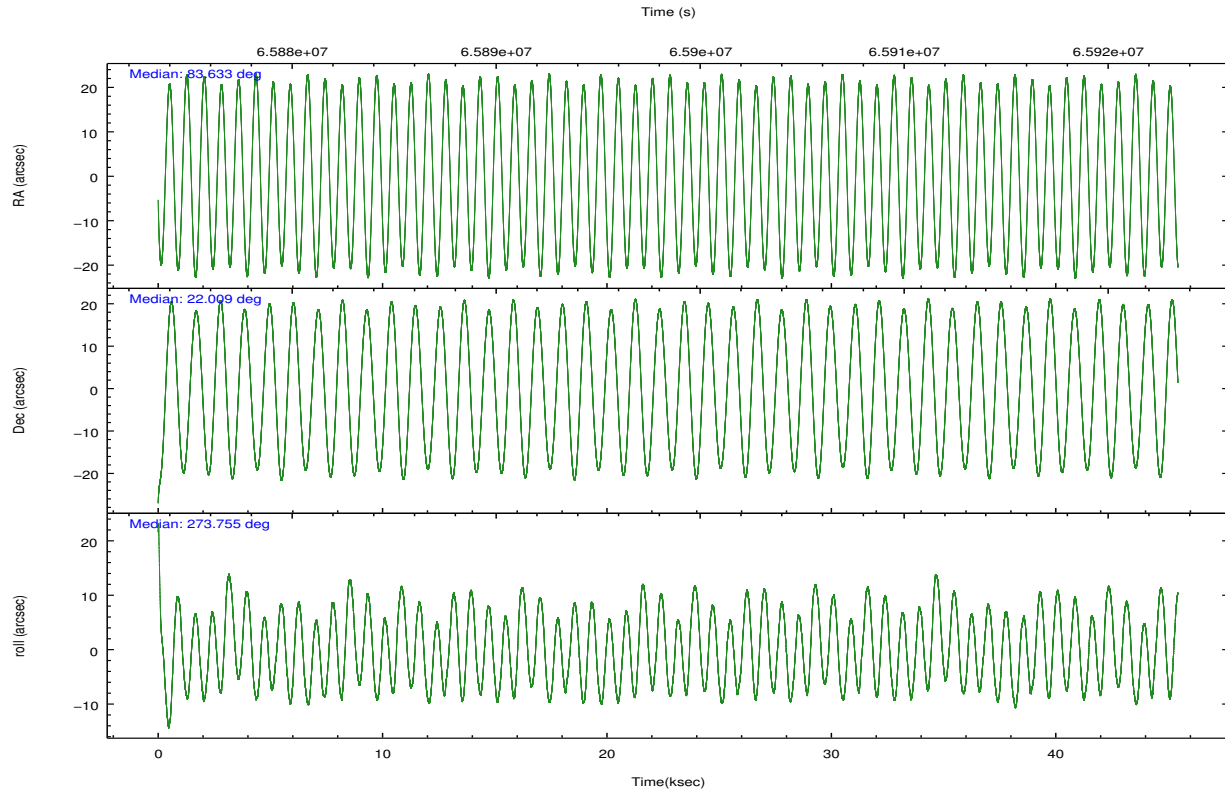
	segment 1	segment 2	segment 3
level 1 events	274794	7937585	348012
rejected events	36474	105867	38712
rejected %	13%	1%	11%

2.2 Compared Parameters

Parameter	Planned	Actual	Parameter	Planned	Actual
Instrument	HRC	HRC	Obspar format		
Detector	HRC-S	HRC-S	version number	7	7
Grating	LETG	LETG	Obspar file type	PREDICTED	ACTUAL
Data mode	OBSERVING	OBSERVING	Obspar update status	NONE	UPDATED
Observation mode	POINTING	POINTING			
[deg] Pointing RA	83.615118	83.63335698692053			
[deg] Pointing Dec	22.032732	22.00936200458665			
[deg] Pointing Roll	273.701346	273.7618532068879			
[mm] SIM focus pos	-1.429586	-1.428180813131781			
[mm] SIM defocus	0.1037507710433287	0.1051558262725154			
[mm] SIM translation stage pos	250.455976	248.8593856025041			
[mm] SIM translation stage offset	0	1.596592791050568			
[s] Observation start time (MET)	65876148.184000	65874749.812206			
Observation start date	2000-02-02T10:54:44	2000-02-02T10:32:29			
[s] Observation end time (MET)	65921148.184000	65922348.251438			
Observation end date	2000-02-02T23:24:44	2000-02-02T23:45:48			

2.3 Aspect



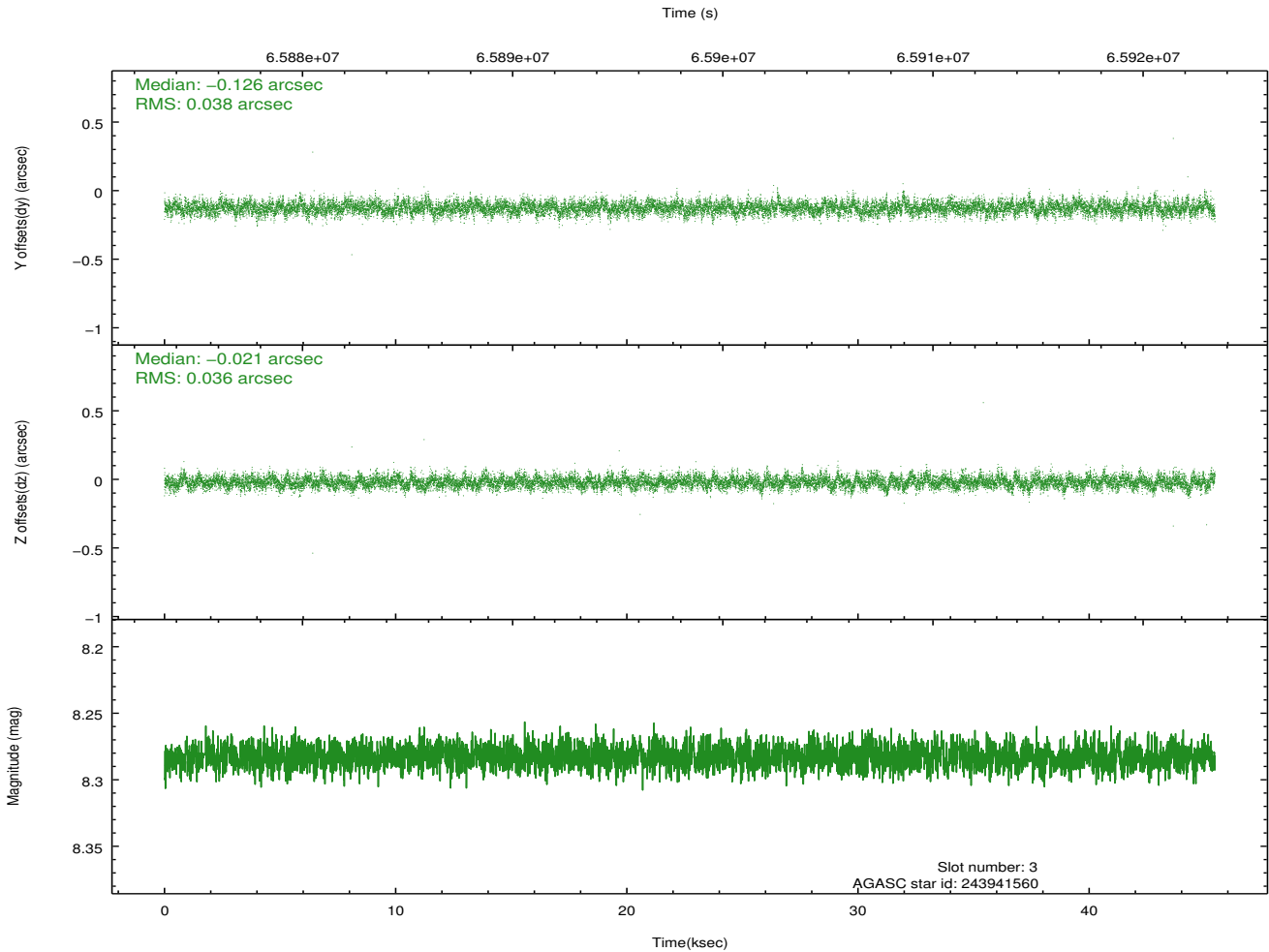
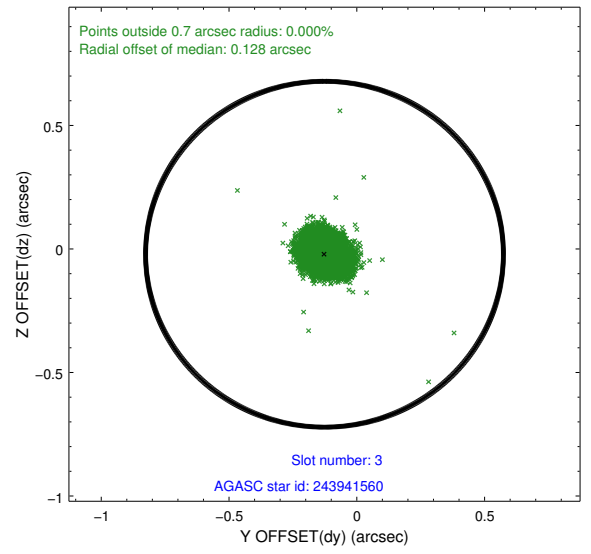
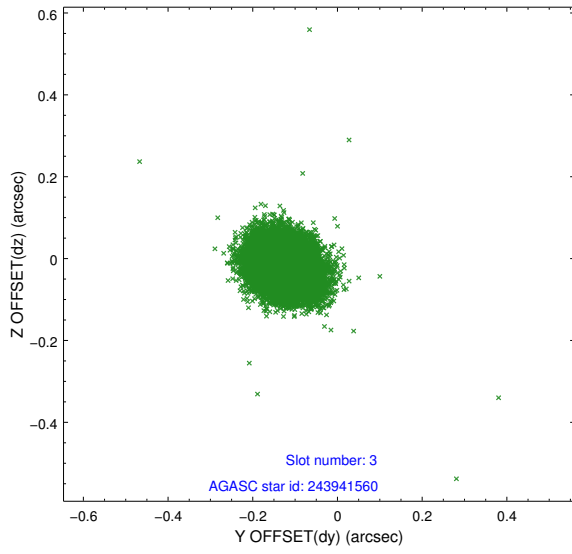


Slot Statistics

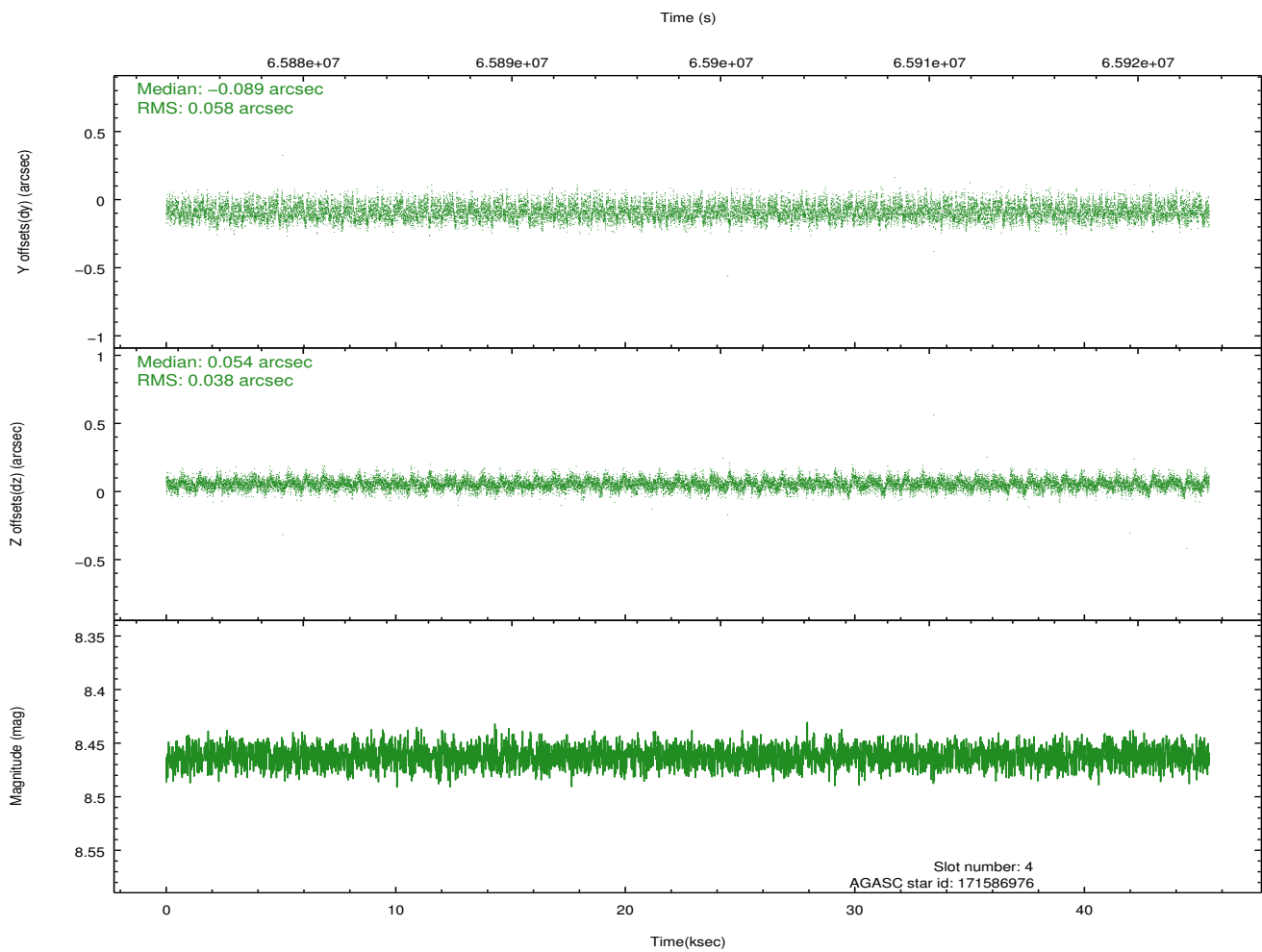
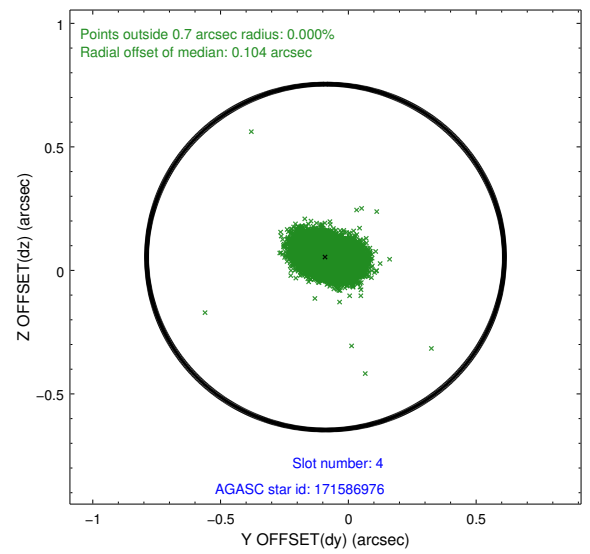
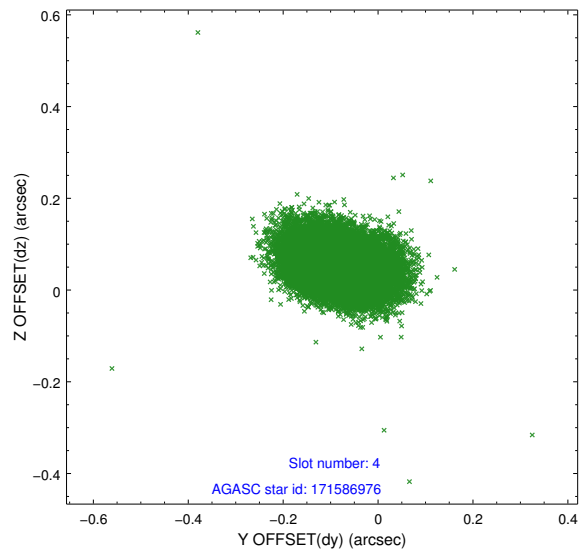
slot	status	id	mag	n_pts	med_dy	med_dz	dr1	dr2	ra	dec	mean_y	mean_z
0	FID	HRC-S-1	7.01	11084	0.167	-0.126	0.009	0.015	0.000000	0.000000	-1156.05	-417.69
1	FID	HRC-S-3	7.03	11083	0.061	-0.054	0.010	0.017	0.000000	0.000000	-1158.86	611.87
2	FID	HRC-S-4	7.00	11082	0.160	-0.116	0.005	0.010	0.000000	0.000000	1242.22	614.16
3	GUIDE	243941560	8.28	22167	-0.126	-0.021	0.055	0.091	83.733264	22.568598	-1900.14	515.91
4	GUIDE	171586976	8.46	22168	-0.089	0.054	0.073	0.120	83.857953	22.438065	-1404.99	900.16
5	GUIDE	171597832	9.17	22156	0.141	-0.063	0.093	0.147	83.183230	21.366702	2297.46	-1599.75
6	GUIDE	171721904	9.21	22157	0.046	0.133	0.091	0.149	84.272676	22.116922	-165.79	2208.00
7	GUIDE	171600224	9.66	21949	0.028	-0.101	0.113	0.194	82.941815	21.636094	1274.76	-2340.40

2.4 Star Slots

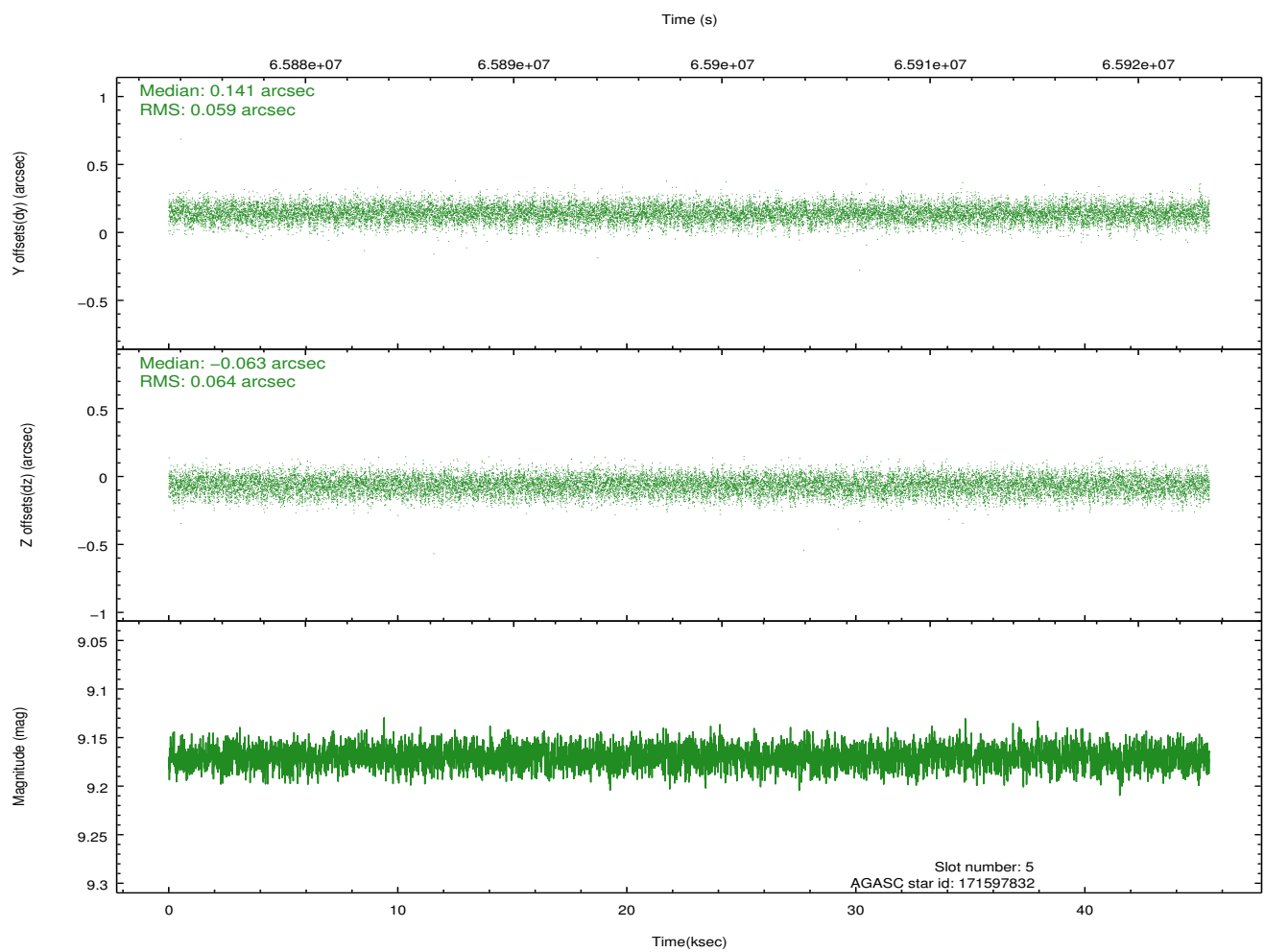
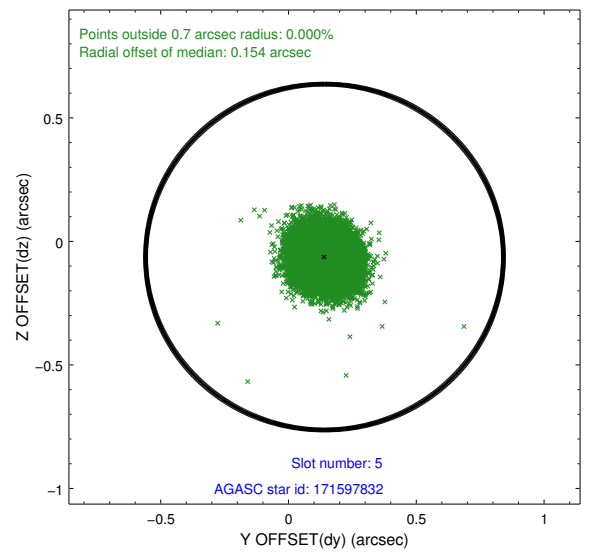
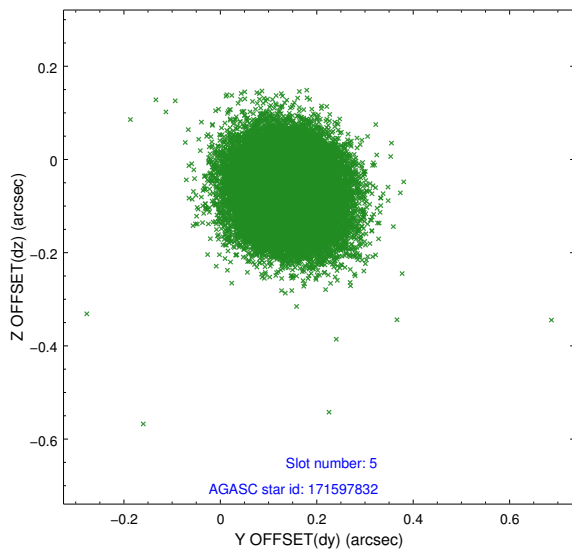
2.4.1 Slot 3



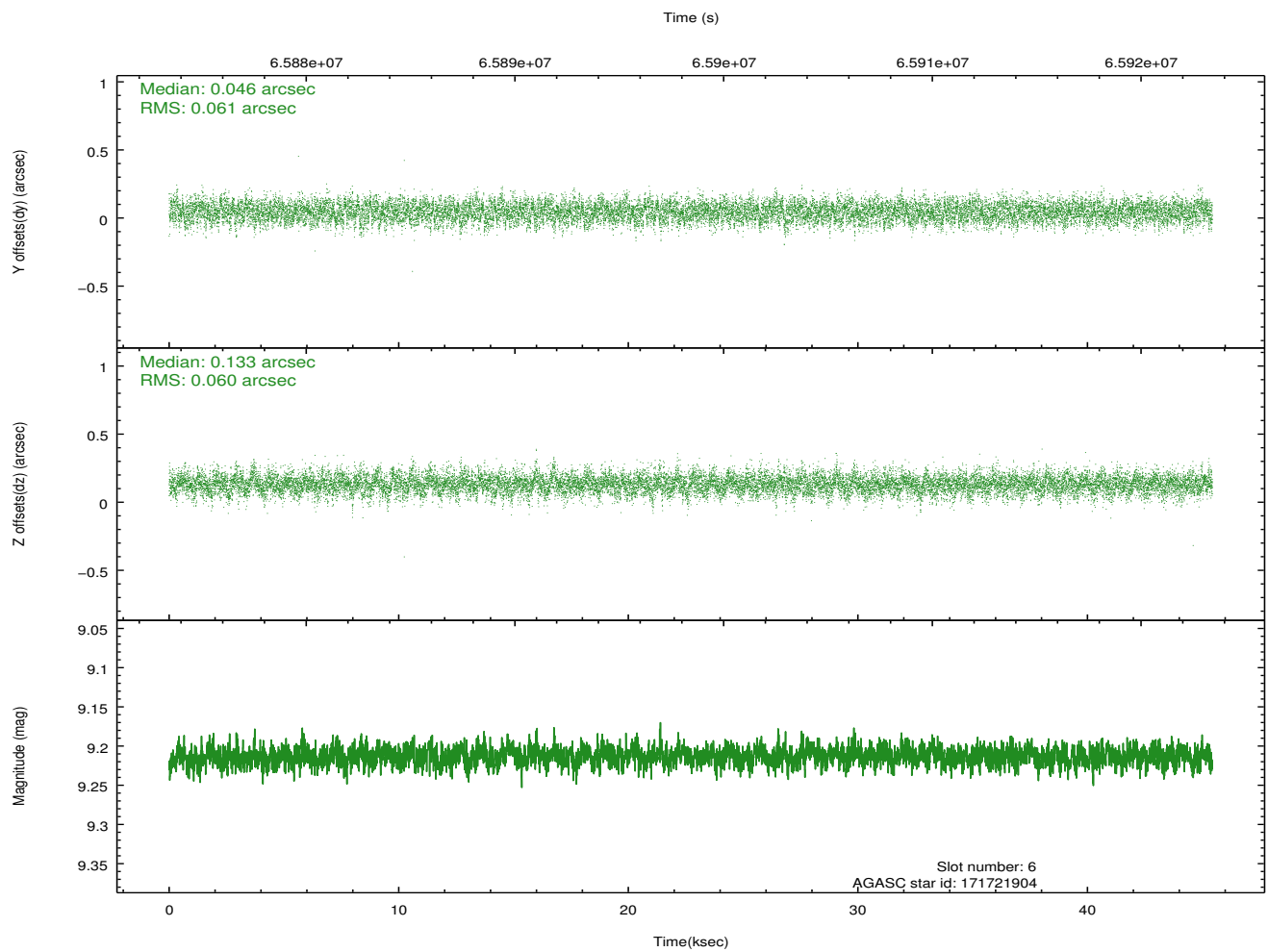
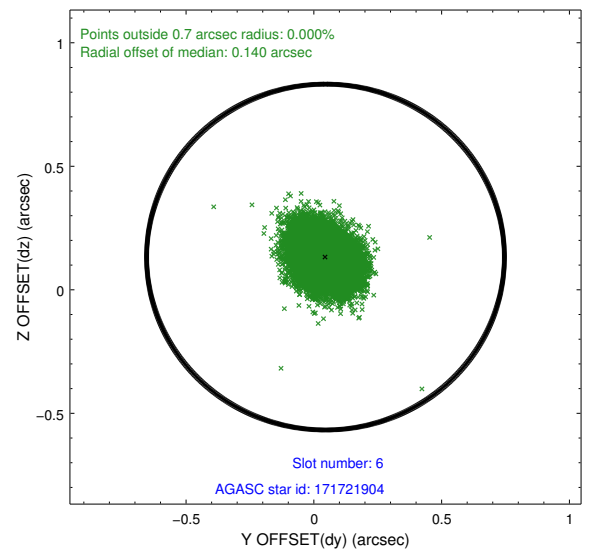
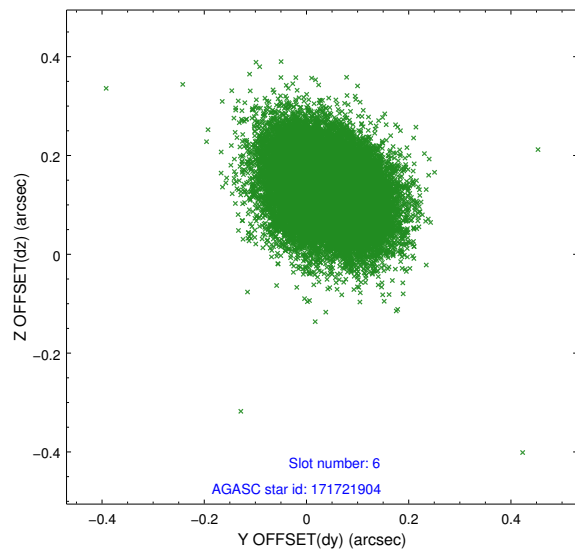
2.4.2 Slot 4



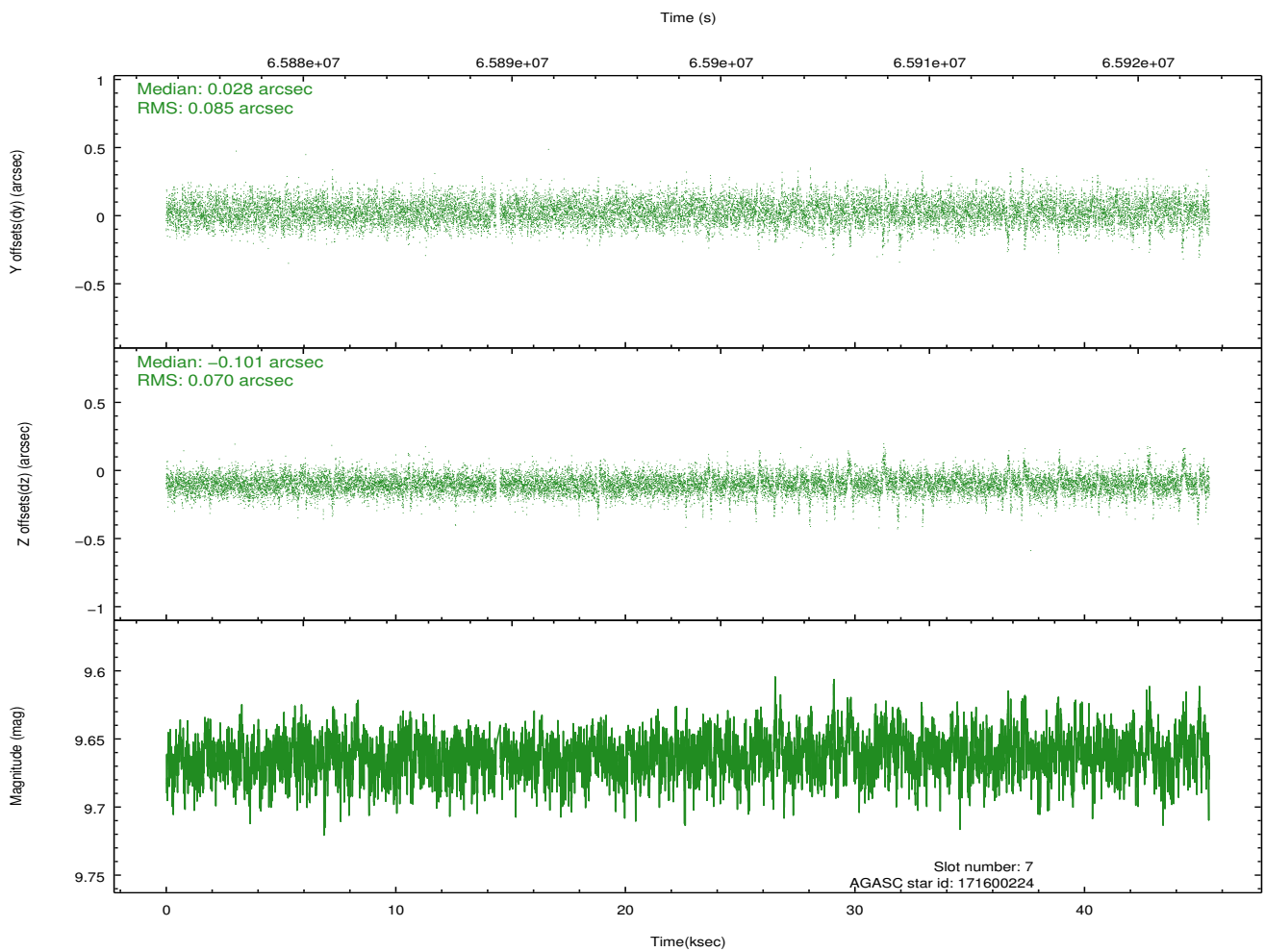
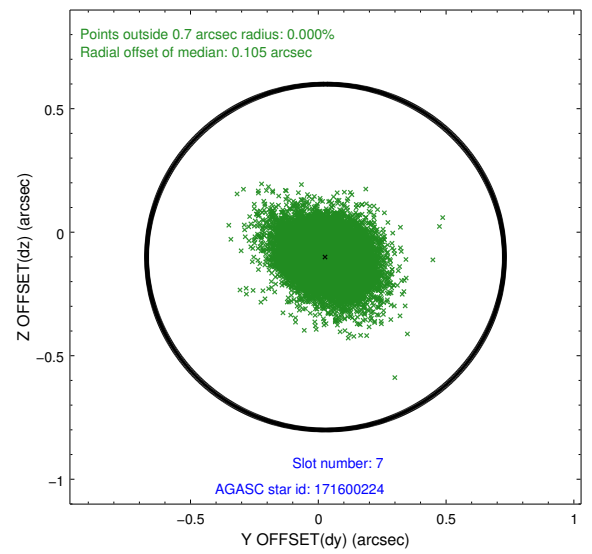
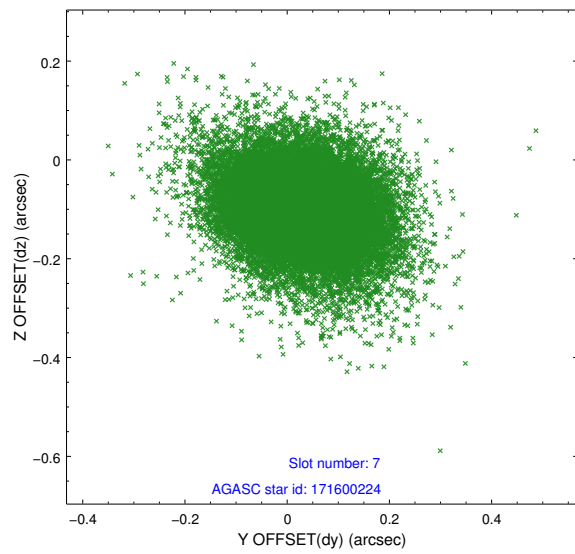
2.4.3 Slot 5



2.4.4 Slot 6

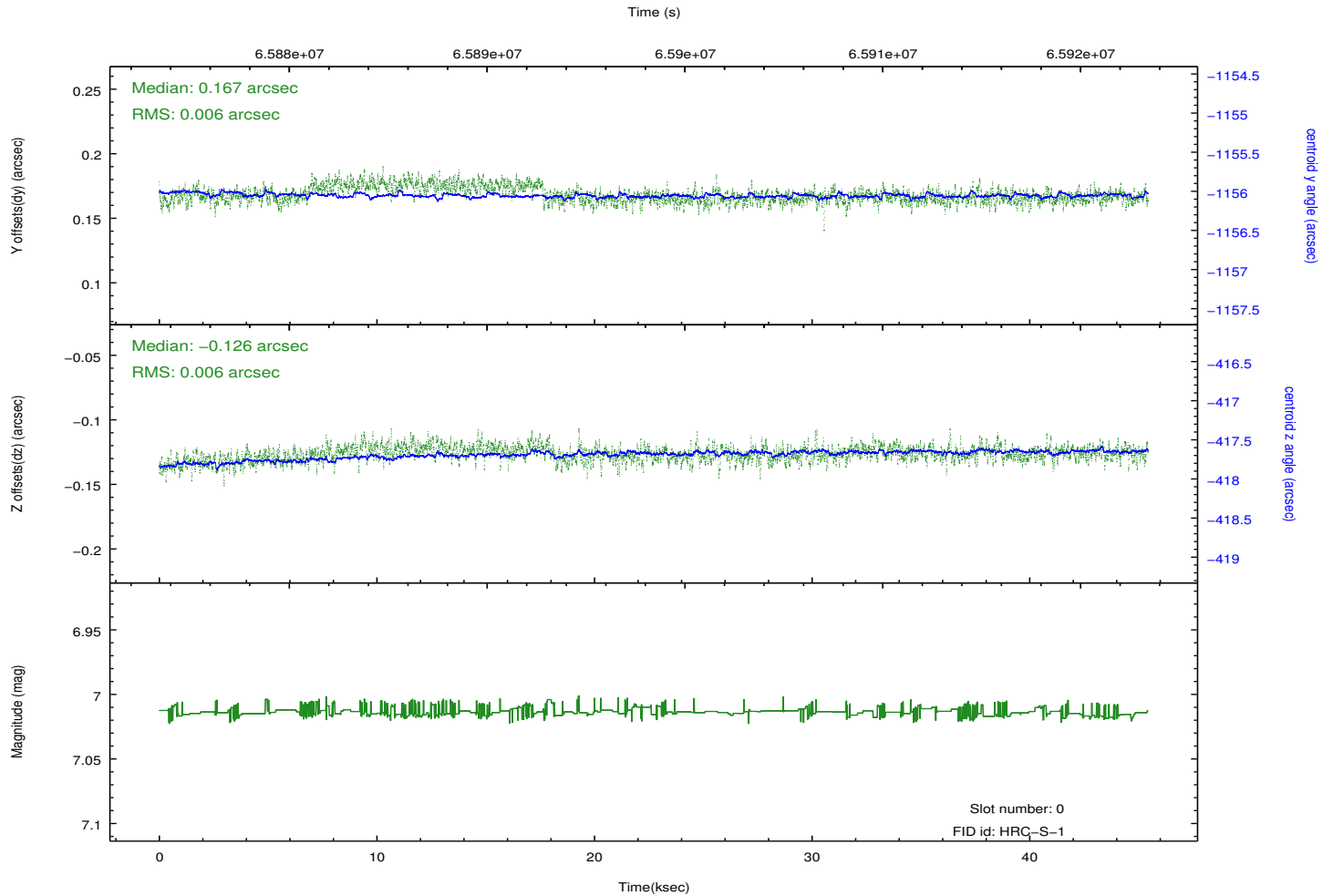
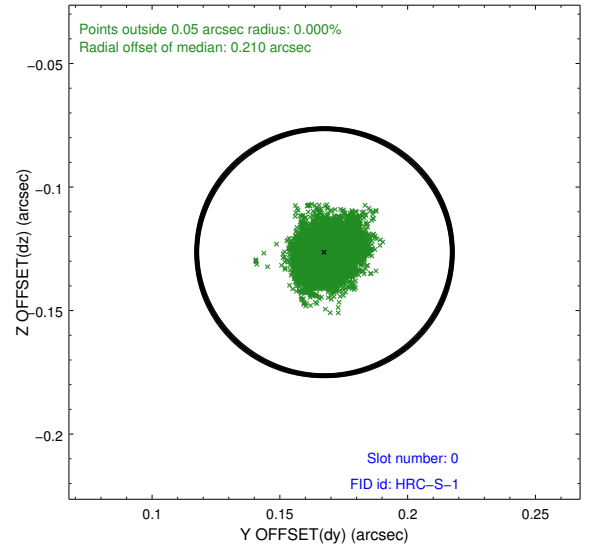
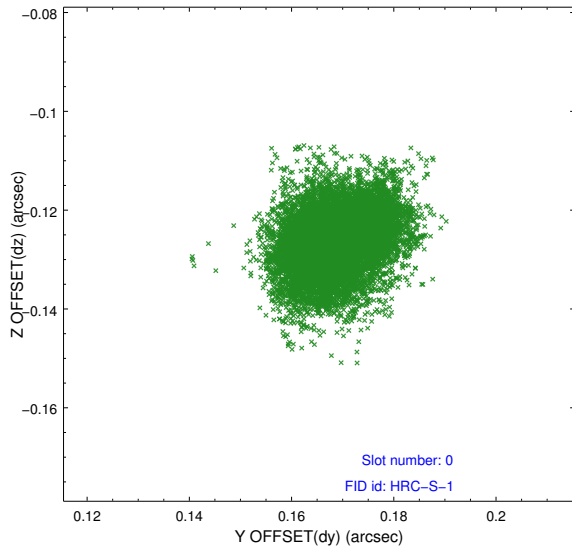


2.4.5 Slot 7

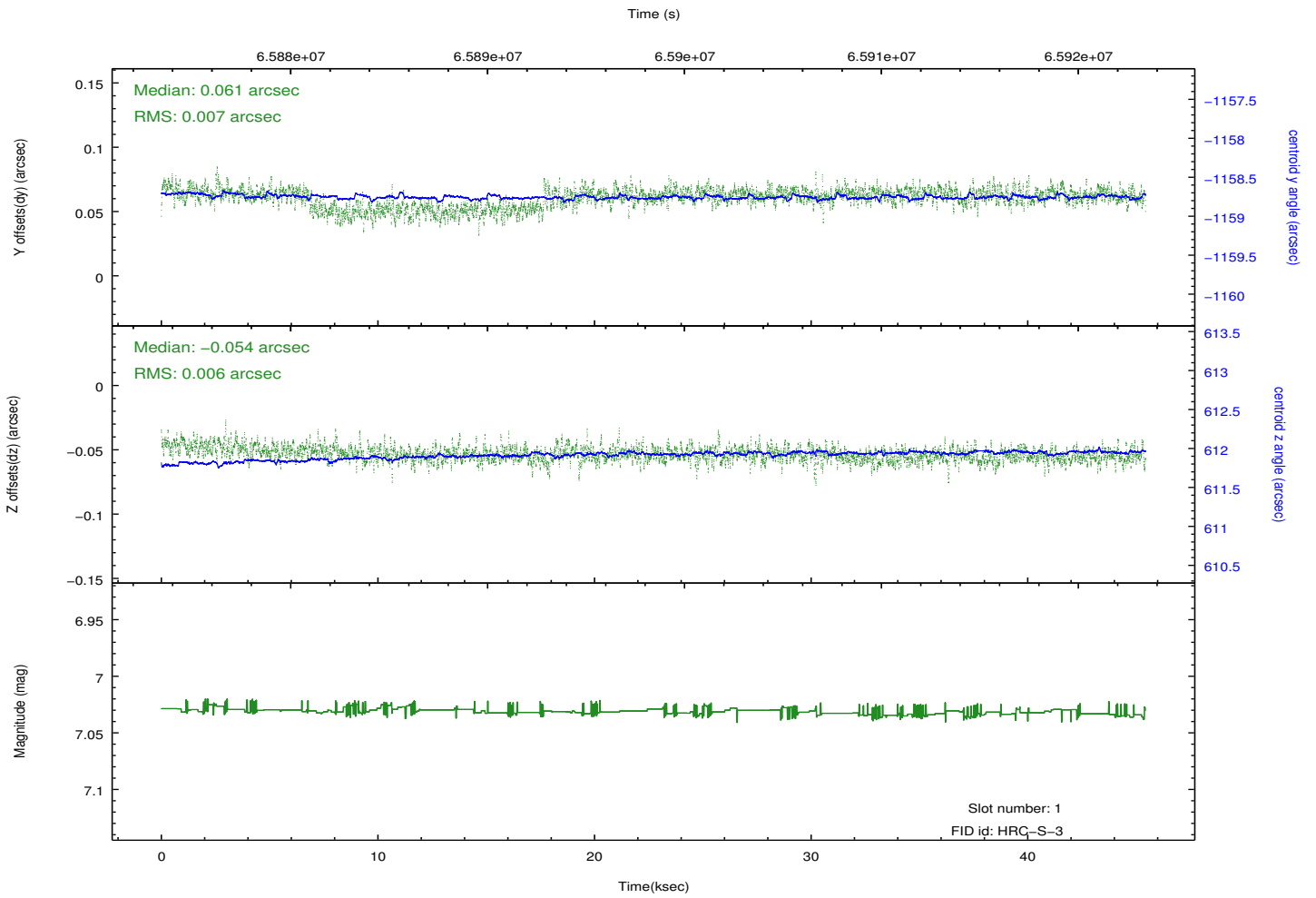
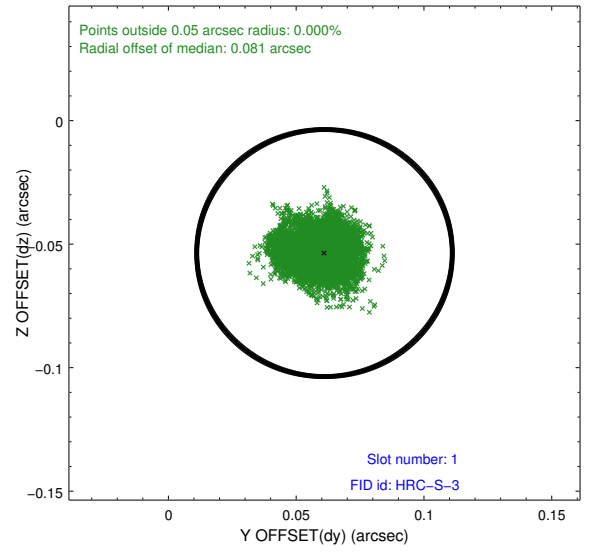
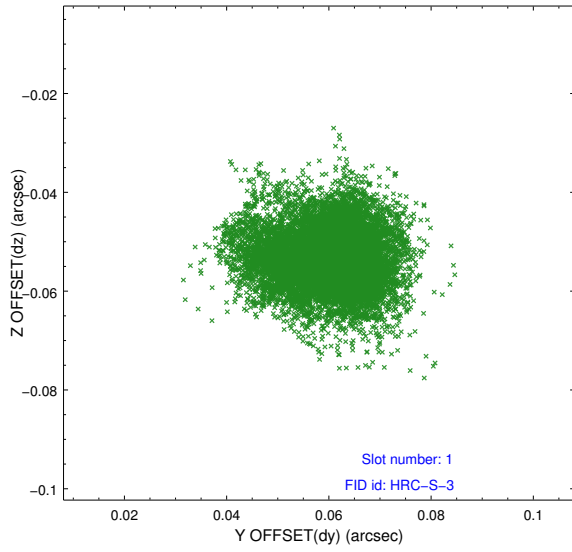


2.5 FID Slots

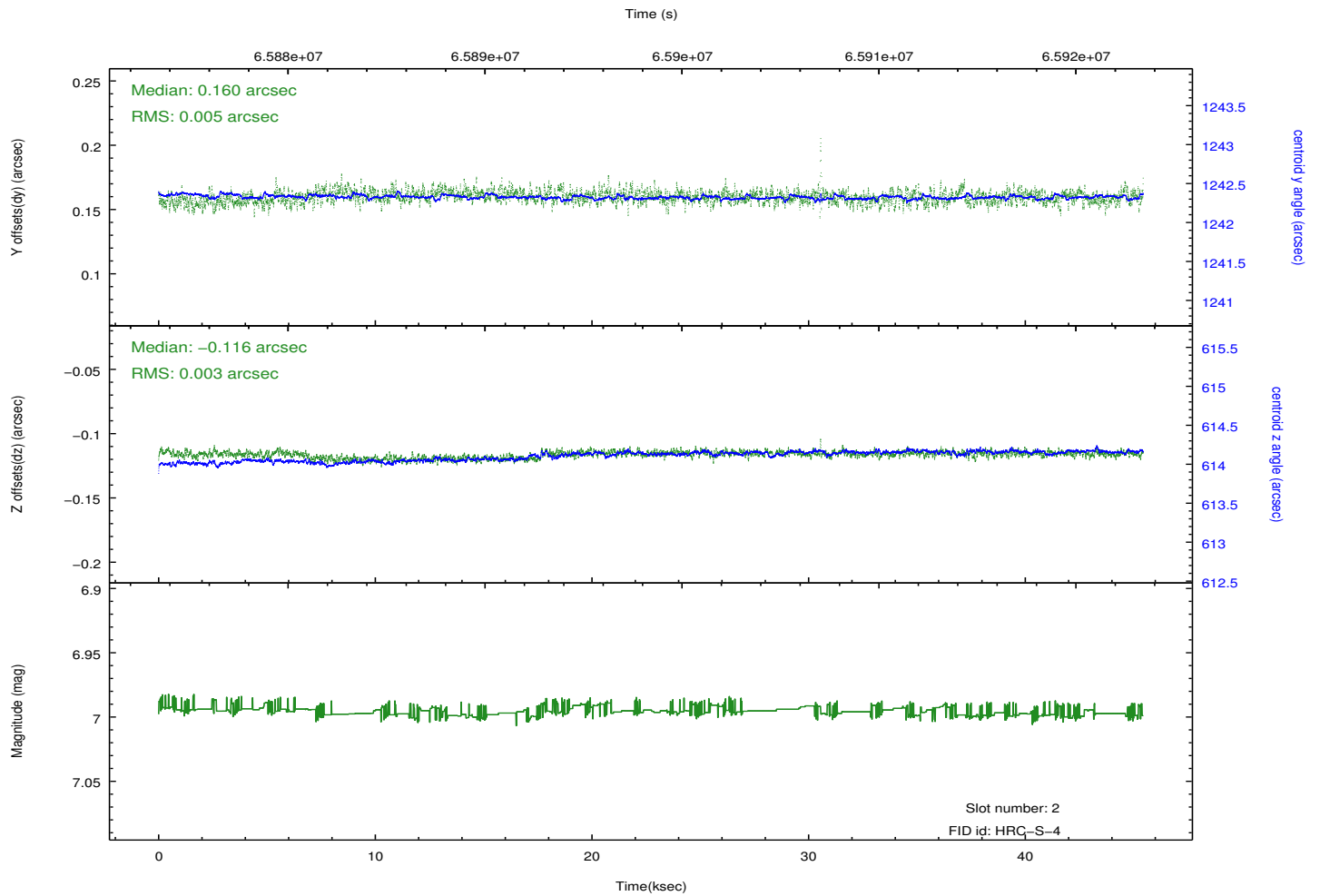
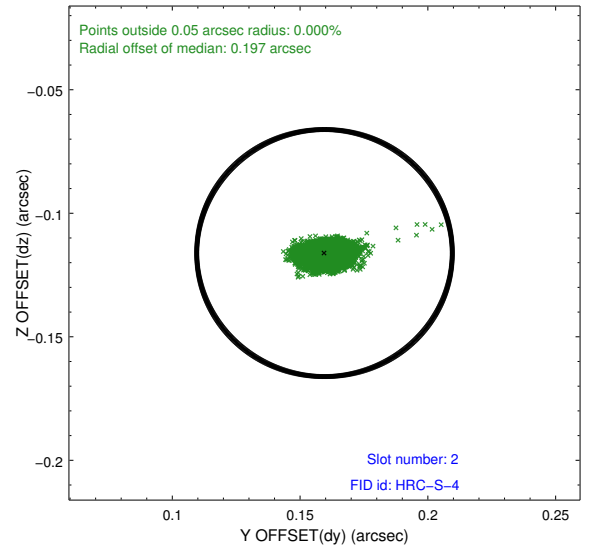
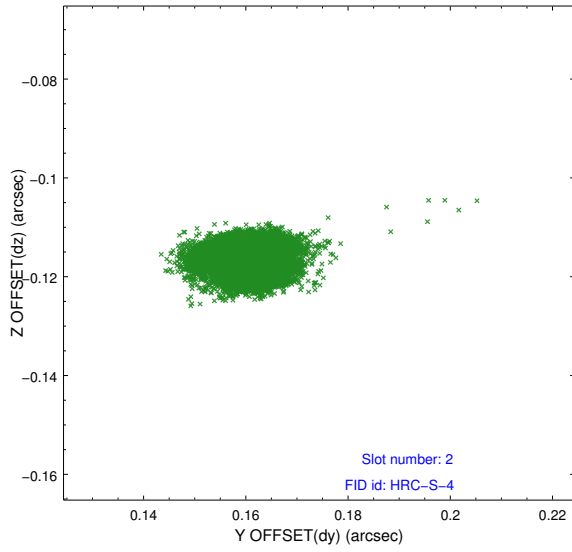
2.5.1 Slot 0



2.5.2 Slot 1

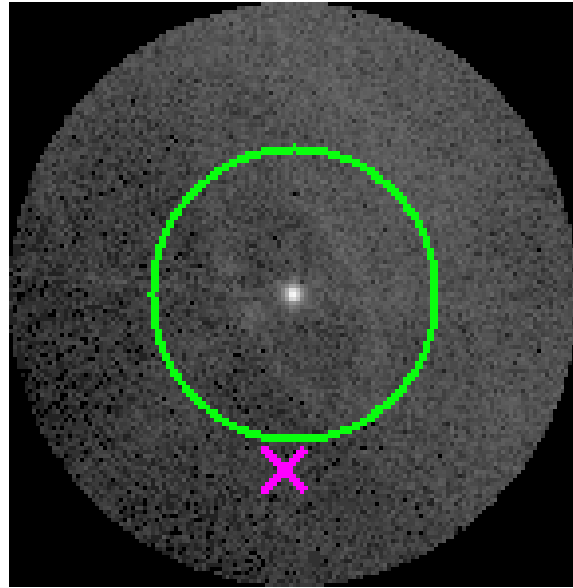


2.5.3 Slot 2

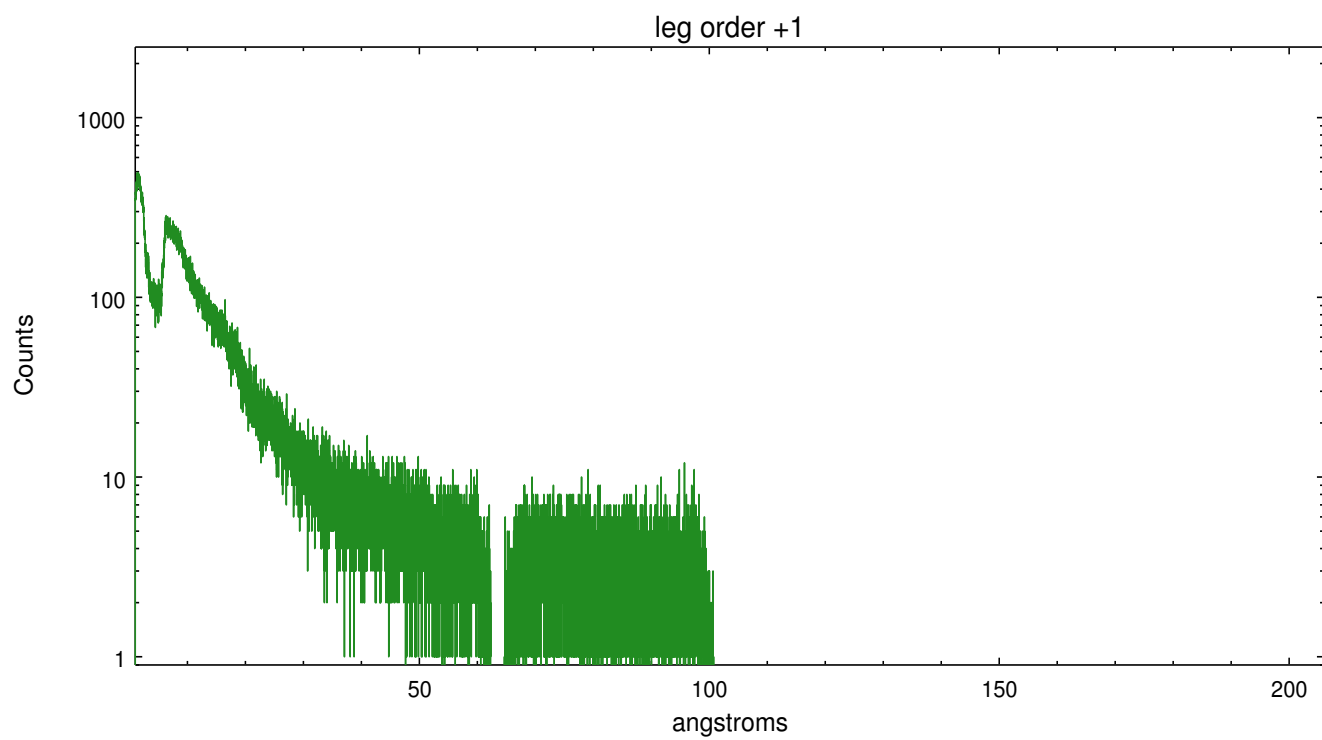
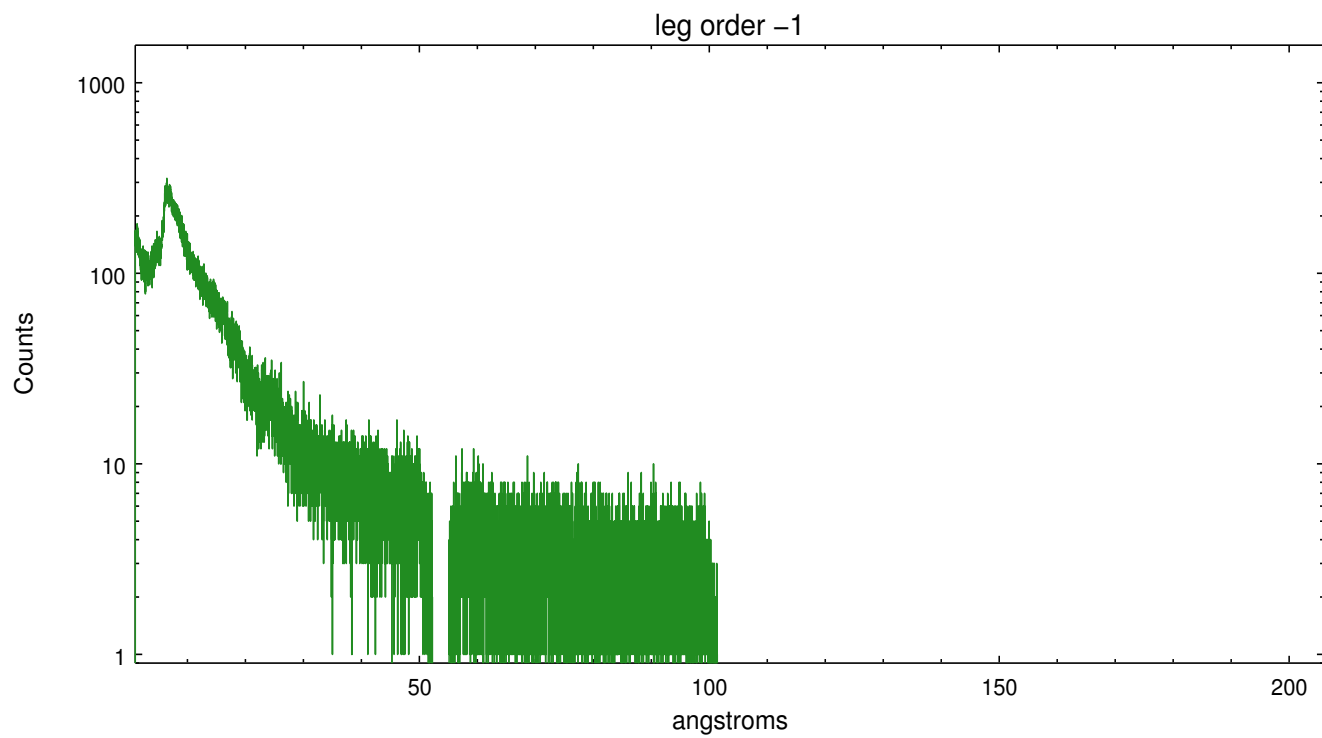


3 Gratings

3.1 LETG Arm



LETG Zero Order



A Summary

A.1 Status

V&V Scientist	Joy Nichols
V&V Date (YYYY-MM-DD)	2012.08.23
V&V Edition	1
V&V Disposition and Status	OK
V&V Charge Time	45.429

A.2 Comments

This is an extended source. Grating processing assumes a point source, so the default spectrum is extracted from a region narrower than the source extent. Note that only one HRC-S chip was on (as intended), so the LETGS spectrum has a limited range. There is telemetry saturation throughout the observation, resulting in a short livetime.