

V&V Reference Report

L2 ASCDS Version : 8.4.5

Observation 79 - L2 Version 4
Chandra X-Ray Center

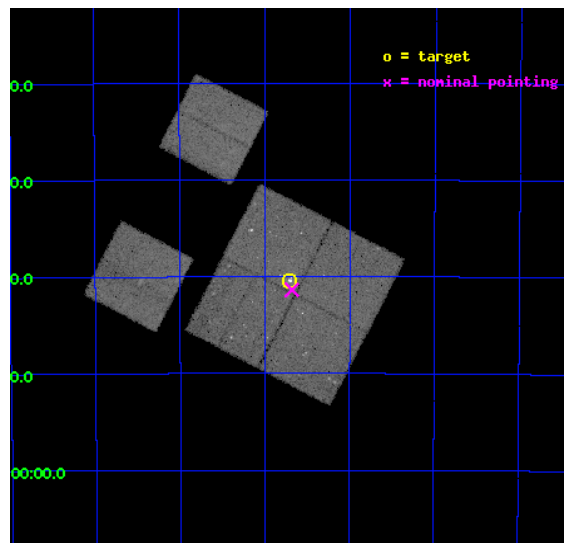
L2 Processing Date : Aug 31 2012

Contents

1	Front	2
2	OBI	3
2.1	OBI	3
2.1.1	Images	3
2.1.2	Bias	3
2.1.3	Parameters	4
2.1.4	Events	4
2.2	Compared Parameters	5
2.3	Aspect	6
2.4	Star Slots	9
2.4.1	Slot 3	9
2.4.2	Slot 4	10
2.4.3	Slot 5	11
2.4.4	Slot 6	12
2.4.5	Slot 7	13
2.5	FID Slots	14
2.5.1	Slot 0	14
2.5.2	Slot 1	15
2.5.3	Slot 2	16
A	Summary	17
A.1	Status	17
A.2	Comments	17

1 Front

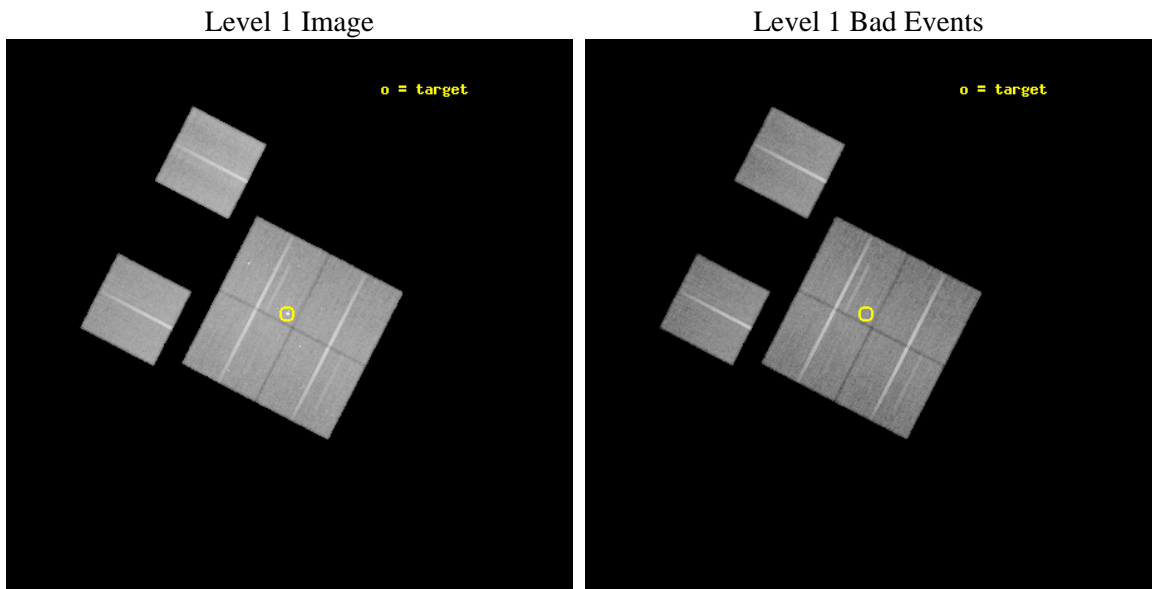
seq_num	300004	Sequence number
obs_id	79	Observation id
title	NATURE AND ORIGIN OF CATAclysmic VARIABLES AND DIM X-RAY SOURCES IN GLOBULAR CLUSTERS	Proposal title
observer	Dr. Stephen Murray	Principal investigator
object	NGC 6397	Source name
dtcycle	0	
cycle	P	events from which exps? Prim/Second/Both
ra_targ	265.17583	Observer's specified target RA [deg]
dec_targ	-53.67325	Observer's specified target Dec [deg]
ra_nom	265.17032571707	Nominal RA [deg]
dec_nom	-53.689381422508	Nominal Dec [deg]
roll_nom	297.27397286395	Nominal Roll [deg]
revision	4	Processing version of data
ontime	48963.200045586	Sum of GTIs [s]
livetime	48343.198524509	Livetime [s]
ontime0	48963.200045586	Sum of GTIs [s]
ontime1	48959.959085345	Sum of GTIs [s]
ontime2	48963.200045586	Sum of GTIs [s]
ontime3	48963.200045586	Sum of GTIs [s]
ontime6	48959.95908536	Sum of GTIs [s]
ontime8	48963.200045586	Sum of GTIs [s]
l2events	195079	Number of level 2 events



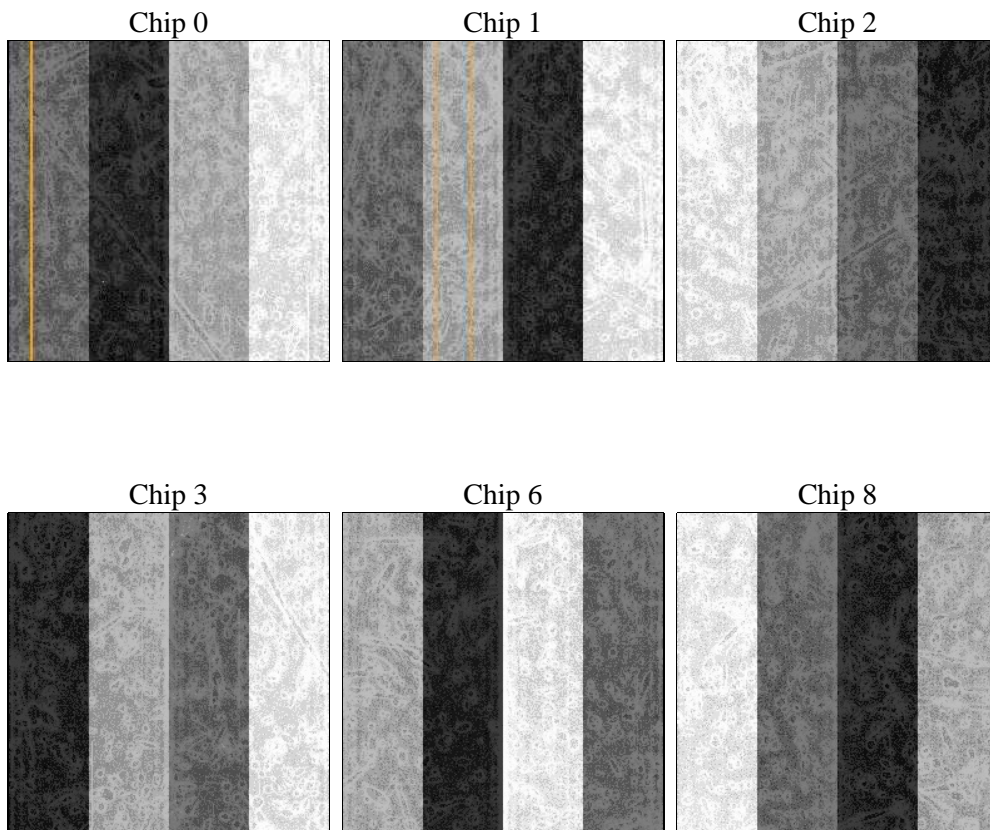
2 OBI

2.1 OBI

2.1.1 Images



2.1.2 Bias



2.1.3 Parameters

obi_num	0	Obi number	sched_exp_time	49000.000000	[s] Scheduled observation exposure time
ascdsver	8.4.5	Processing system revision	ontime	48963.200045586	Sum of GTIs [s]
caldbver	4.5.1.1	 	ontime0	48963.200045586	Sum of GTIs [s]
date	2012-08-31T12:48:02	Date and time of file creation	ontime1	48959.959085345	Sum of GTIs [s]
revision	4	Processing version of data	ontime2	48963.200045586	Sum of GTIs [s]
			ontime3	48963.200045586	Sum of GTIs [s]
			ontime6	48959.95908536	Sum of GTIs [s]
			ontime8	48963.200045586	Sum of GTIs [s]
			l1events	1817869	Number of level 1 events

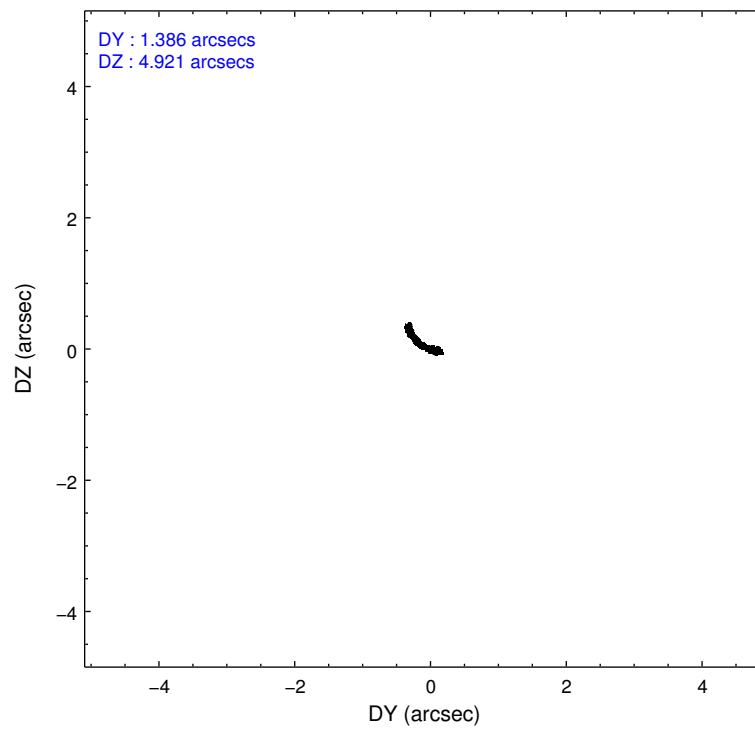
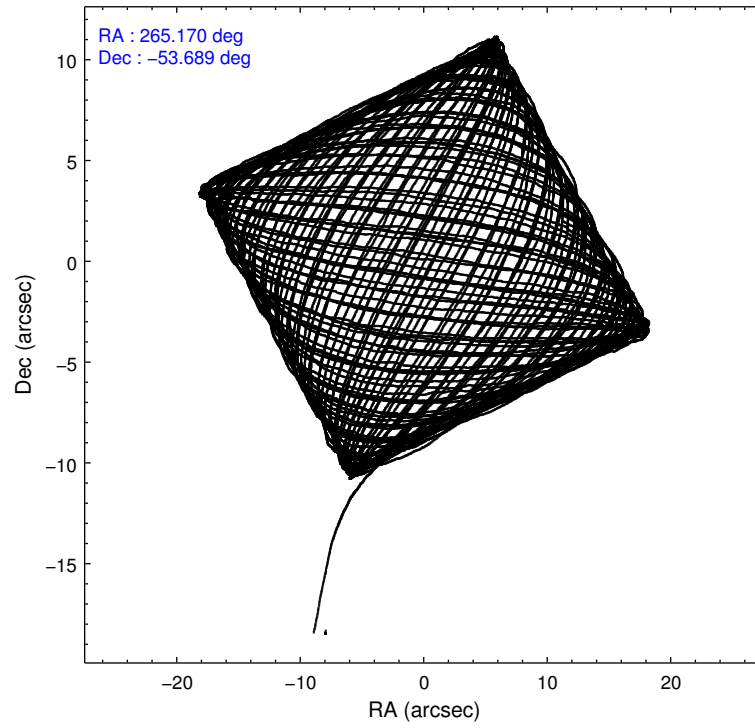
2.1.4 Events

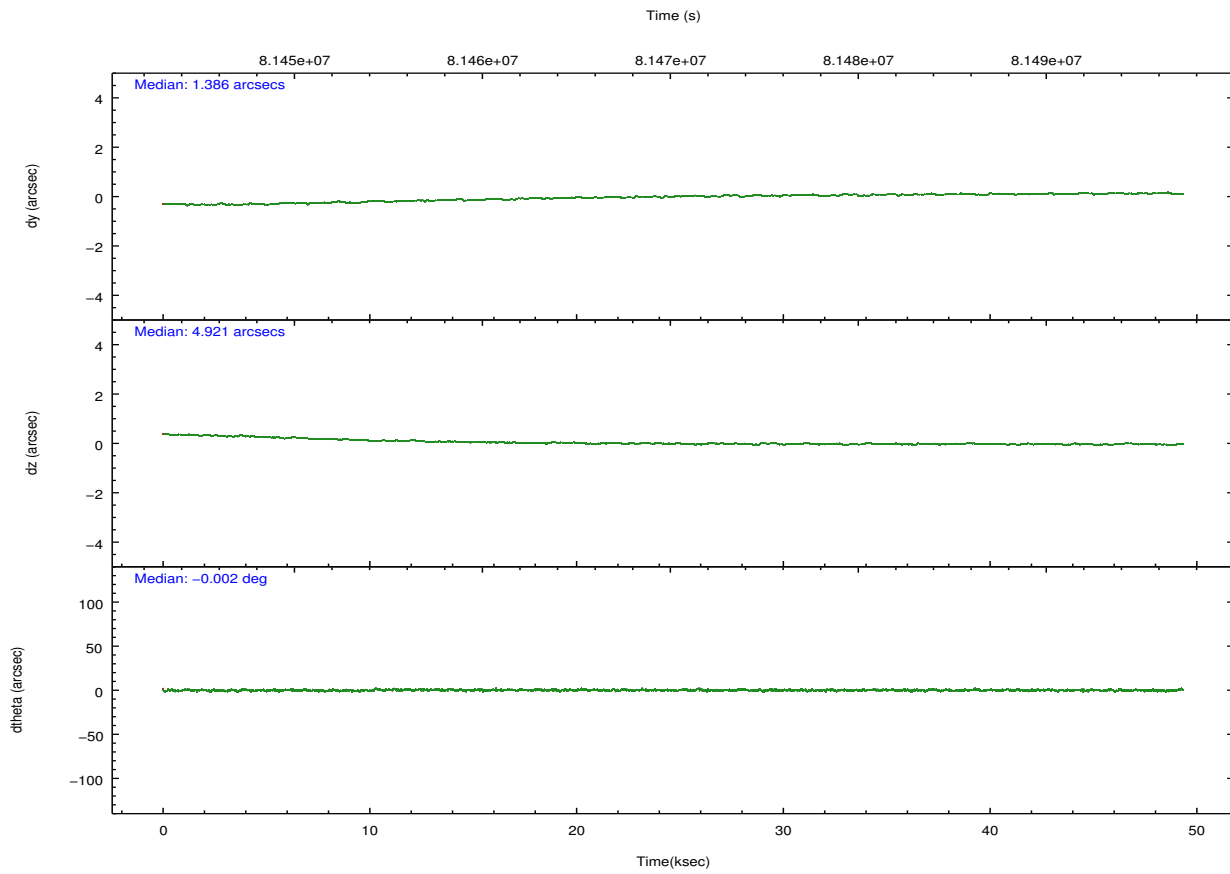
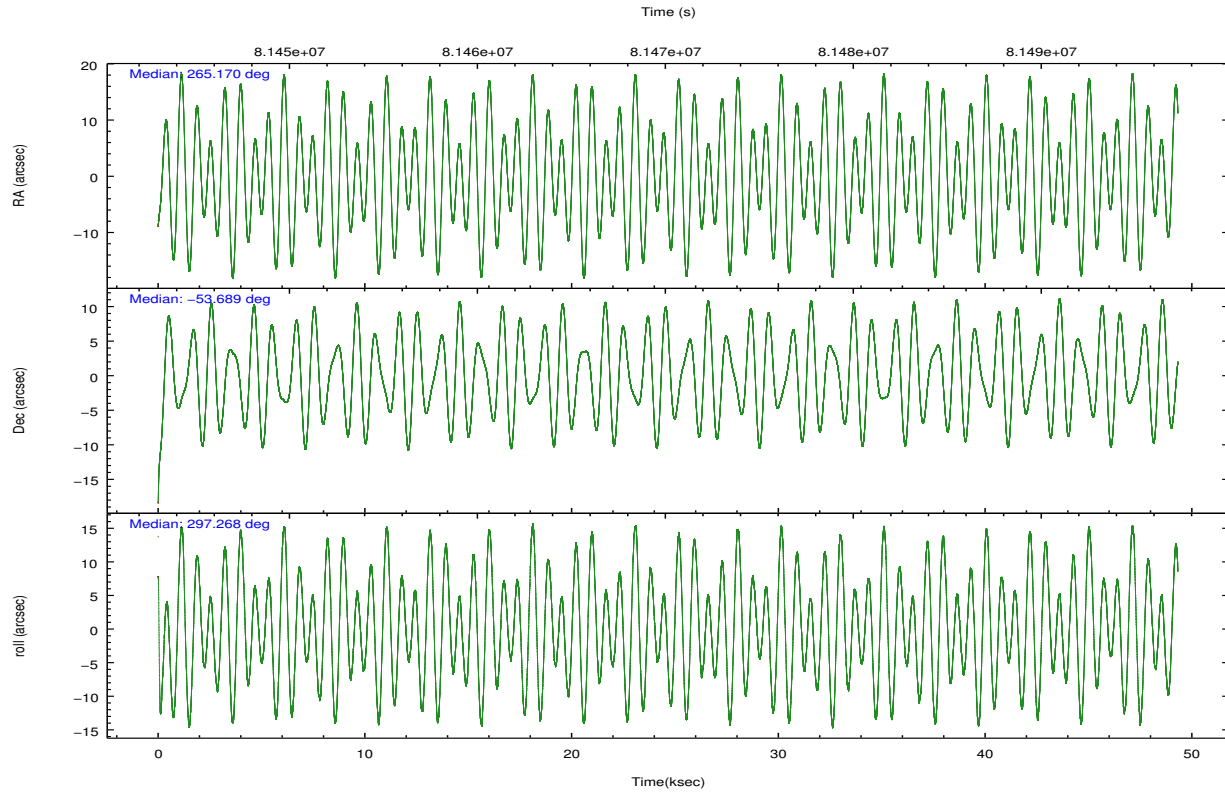
	ccd 0	ccd 1	ccd 2	ccd 3	ccd 6	ccd 8		ccd 0	ccd 1	ccd 2	ccd 3	ccd 6	ccd 8
level 1 events	274726	271699	297126	304398	292832	377088	grade 0 events	17532	16021	16150	24127	15230	24200
rejected events	237702	235279	262756	259709	258416	303111		6%	5%	5%	7%	5%	6%
rejected %	86%	86%	88%	85%	88%	80%	grade 1 events	152	153	137	218	119	237
								0%	0%	0%	0%	0%	0%
							grade 2 events	7065	6900	6702	7685	6352	15529
								2%	2%	2%	2%	2%	4%
							grade 3 events	3519	3614	3102	3519	3317	7863
								1%	1%	1%	1%	1%	2%
							grade 4 events	3163	3533	3074	3472	3268	7381
								1%	1%	1%	1%	1%	1%
							grade 5 events	9782	10280	9354	10541	11402	14863
								3%	3%	3%	3%	3%	3%
							grade 6 events	5746	6353	5344	5889	6253	19005
								2%	2%	1%	1%	2%	5%
							grade 7 events	227767	224845	253263	248947	246891	288010
								82%	82%	85%	81%	84%	76%

2.2 Compared Parameters

Parameter	Planned	Actual	Parameter	Planned	Actual
Instrument	ACIS	ACIS	Obspar format version number	7	7
Detector	ACIS-012368	ACIS-012368	Obspar file type	PREDICTED	ACTUAL
Grating	NONE	NONE	Obspar update status	NONE	UPDATED
Data mode	FAINT	FAINT	Number of optional ACIS chips dropped	0	0
Observation mode	POINTING	POINTING	On-chip summing requested	N	N
[deg] Pointing RA	265.131309	265.1703257170662	Subarray requested	NONE	NONE
[deg] Pointing Dec	-53.674365	-53.68938142250843	Alternating exposures requested	N	N
[deg] Pointing Roll	297.033840	297.273972863947	[s] Primary exposure time	0.000000	3.2
[mm] SIM focus pos	-0.782348	-0.7809083437167272			
[mm] SIM defocus	0	0.001439871863259334			
[mm] SIM translation stage pos	-233.592463	-233.5874344608287			
[mm] SIM translation stage offset	0	-0.005018542100998502			
[s] Observation start time (MET)	81445807.184000	81444693.650272			
Observation start date	2000-07-31T15:49:03	2000-07-31T15:31:33			
[s] Observation end time (MET)	81494807.184000	81495785.802173			
Observation end date	2000-08-01T05:25:43	2000-08-01T05:43:05			
Read mode	TIMED	TIMED			

2.3 Aspect



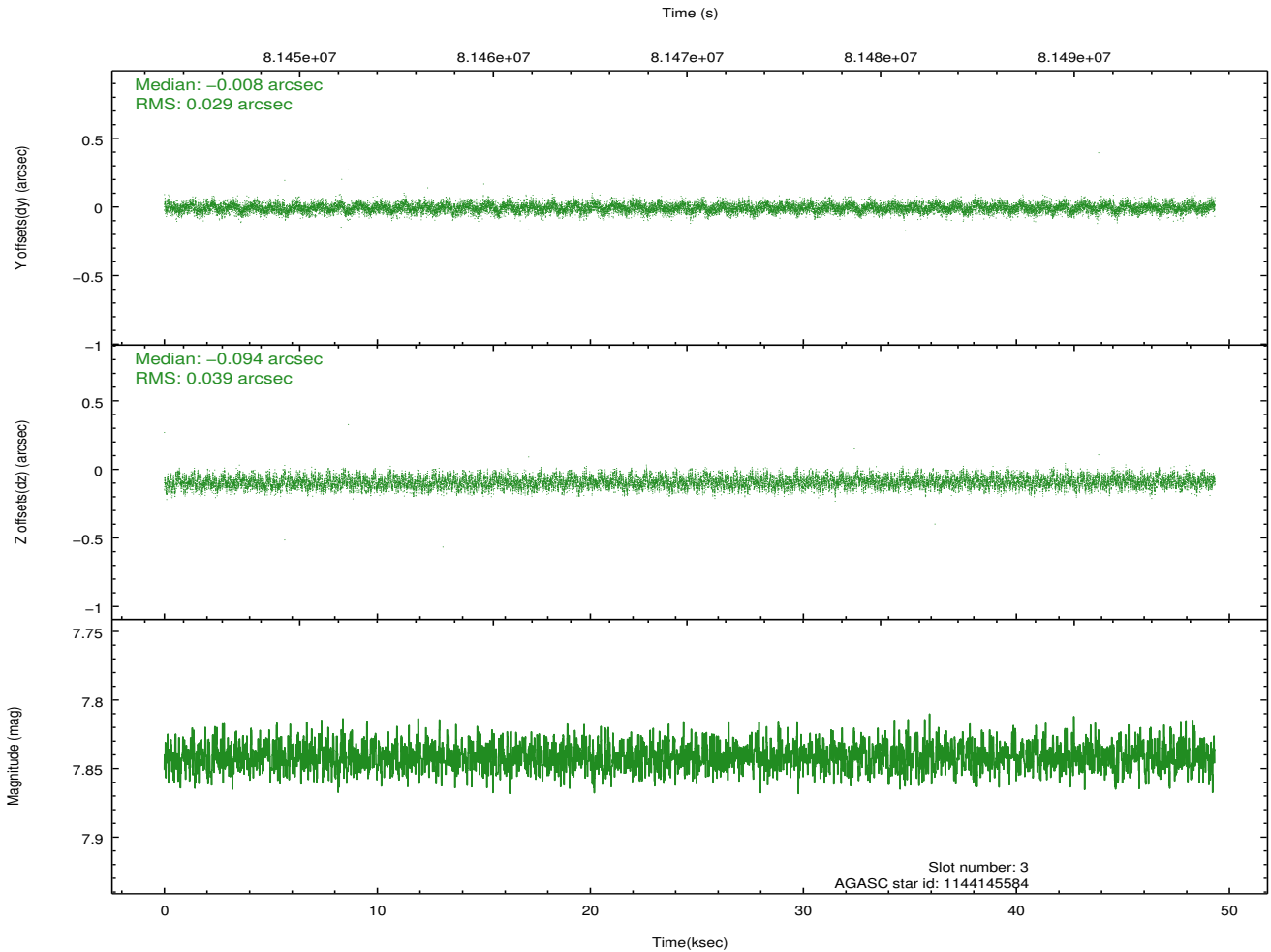
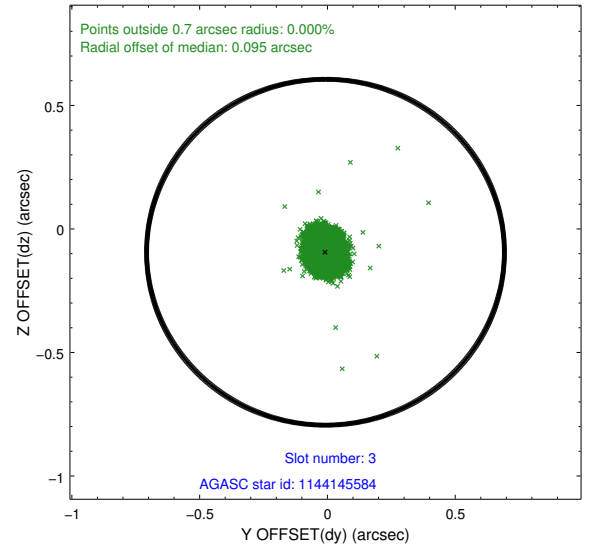
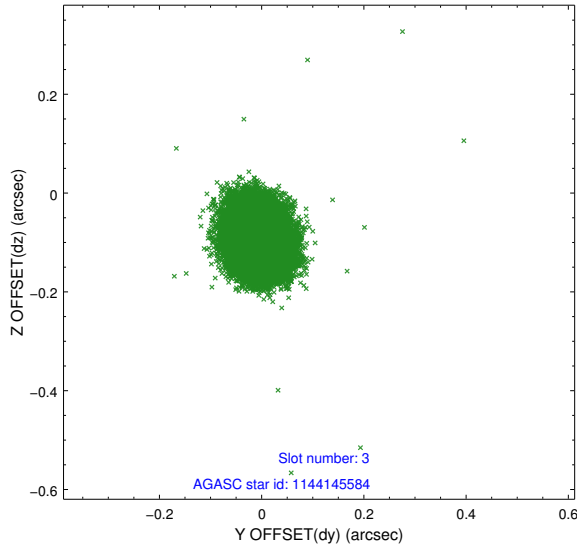


Slot Statistics

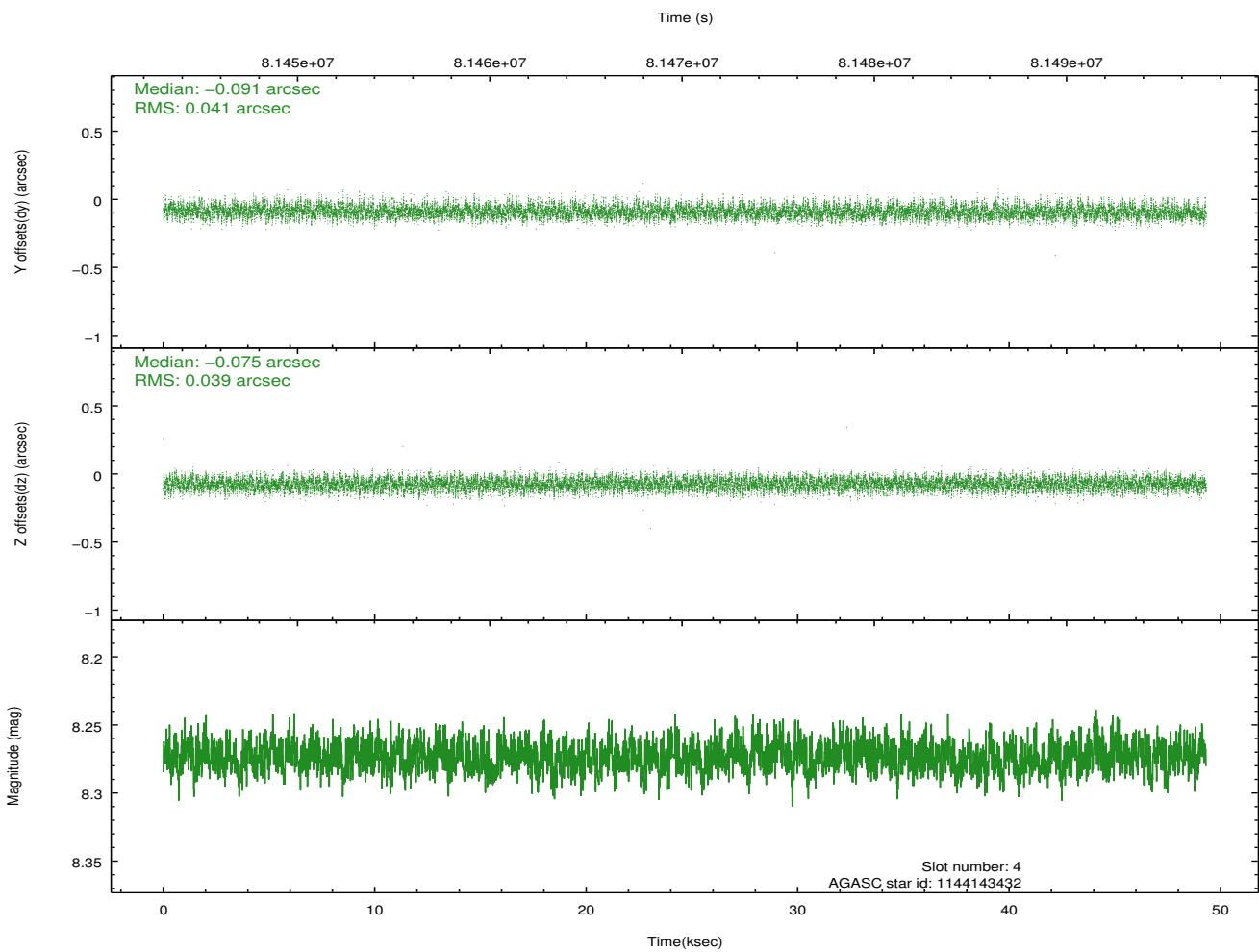
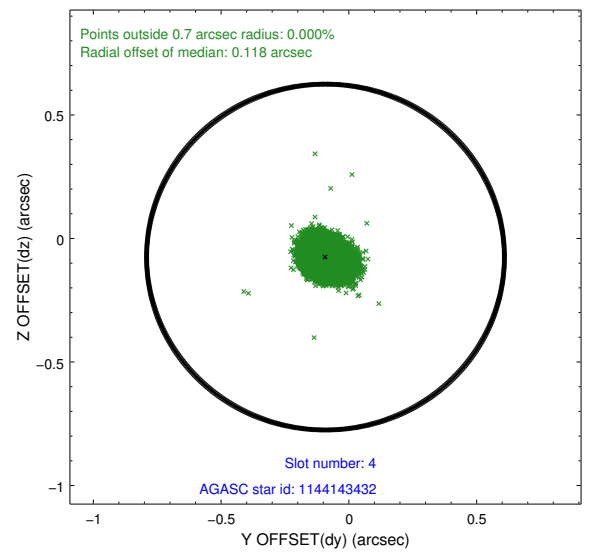
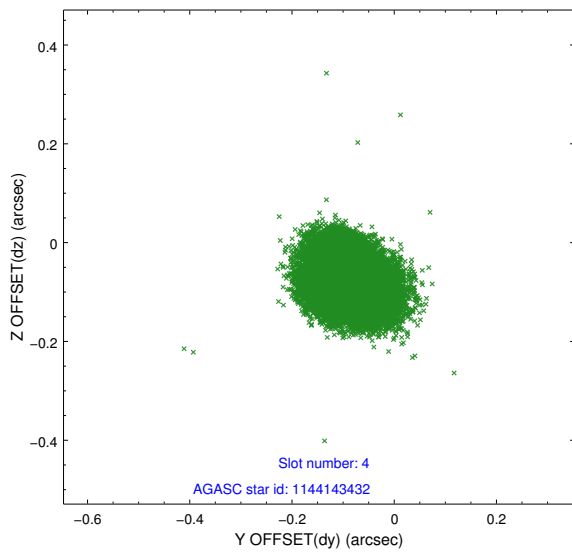
slot	status	id	mag	n_pts	med_dy	med_dz	dr1	dr2	ra	dec	mean_y	mean_z
0	FID	ACIS-I-2	7.15	12029	-0.030	-0.025	0.013	0.022	0.000000	0.000000	-755.70	-834.70
1	FID	ACIS-I-4	7.19	12025	-0.034	0.033	0.009	0.015	0.000000	0.000000	2158.36	1071.54
2	FID	ACIS-I-5	7.23	12028	-0.036	0.061	0.012	0.019	0.000000	0.000000	-1809.56	1069.40
3	GUIDE	1144145584	7.84	24057	-0.008	-0.094	0.051	0.082	265.659245	-53.963660	1440.03	521.24
4	GUIDE	1144143432	8.27	24055	-0.091	-0.075	0.061	0.098	264.820407	-53.209617	-1793.17	163.00
5	GUIDE	1144141280	9.03	24048	0.103	0.148	0.083	0.134	266.126585	-53.720949	1126.59	1806.24
6	GUIDE	1144145816	9.49	24014	-0.024	0.026	0.094	0.151	264.260207	-54.057474	402.71	-2270.92
7	GUIDE	1144143000	9.51	23982	0.021	-0.003	0.078	0.128	264.340648	-53.479959	-1384.23	-1194.72

2.4 Star Slots

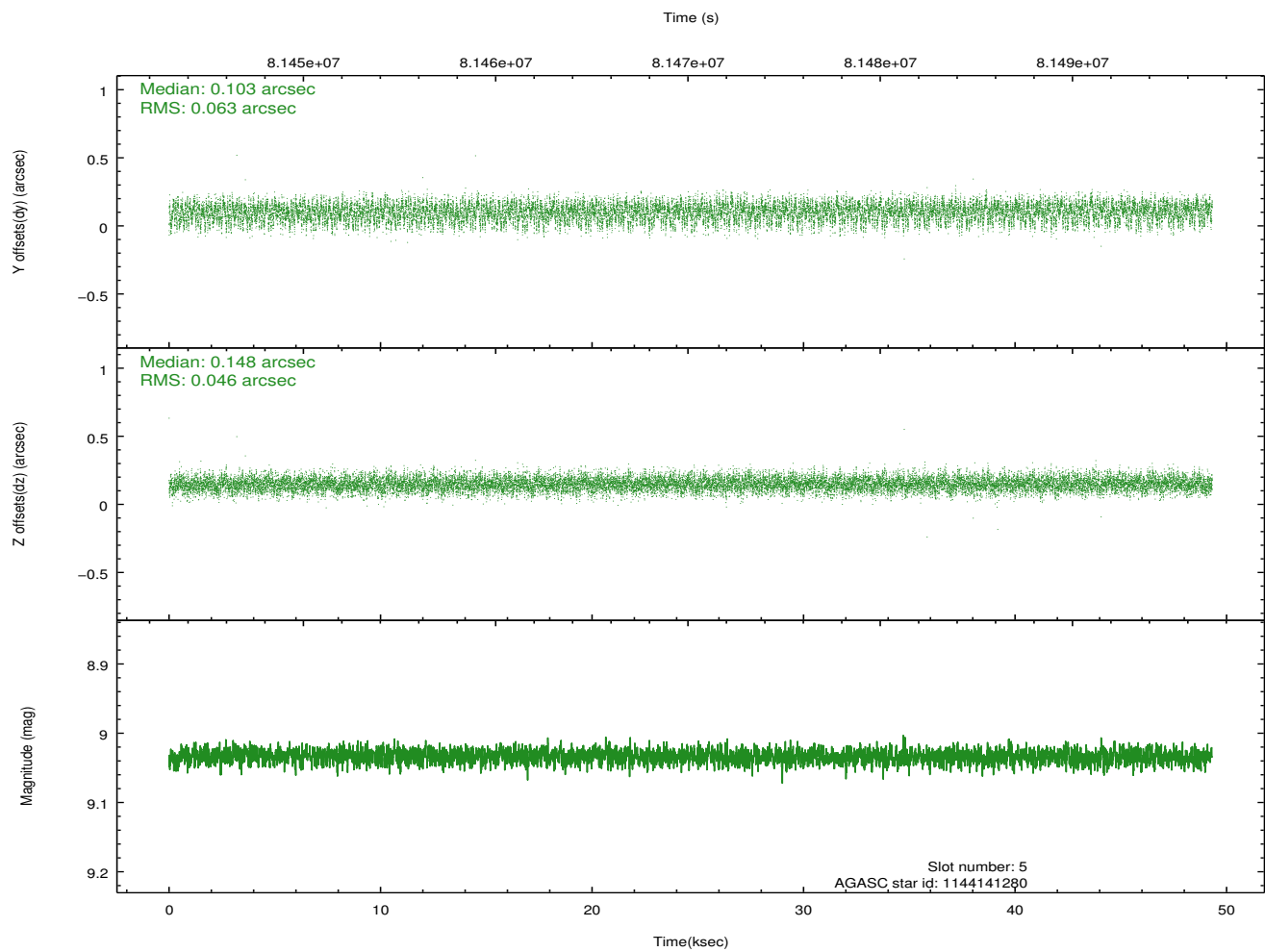
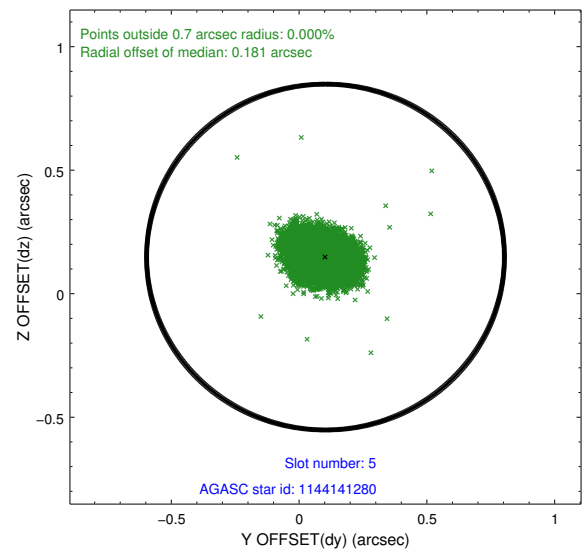
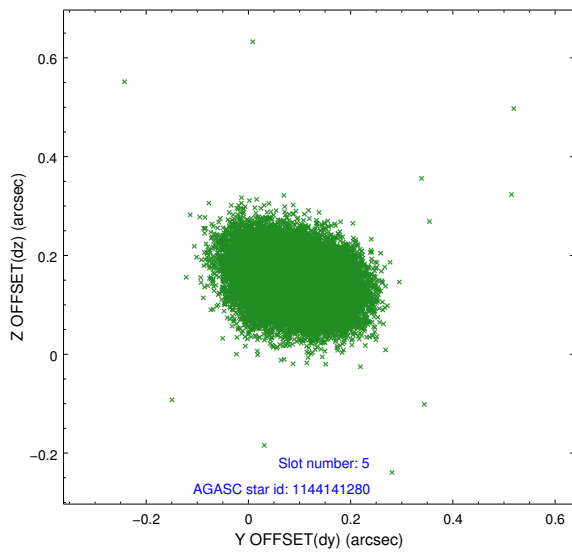
2.4.1 Slot 3



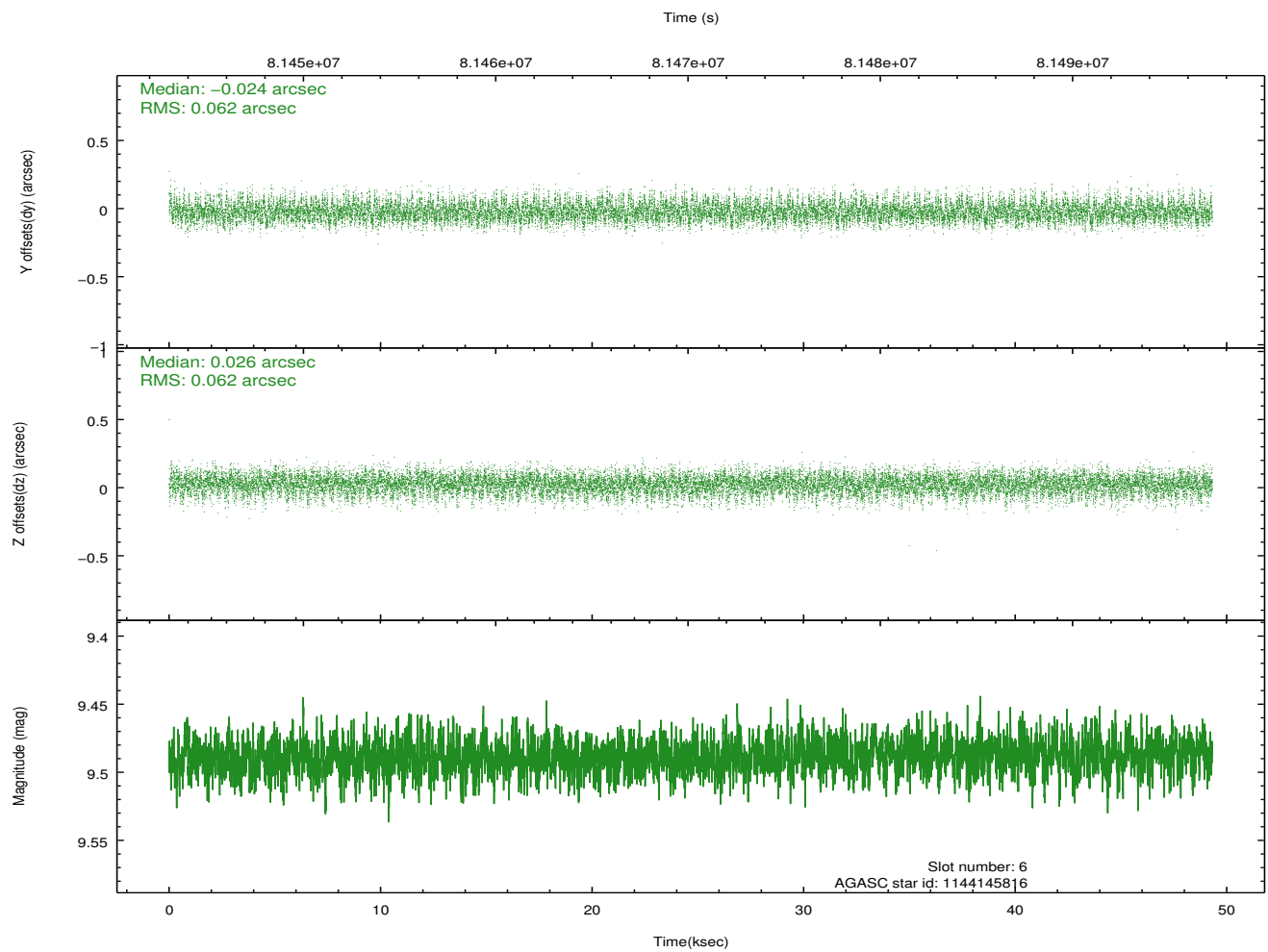
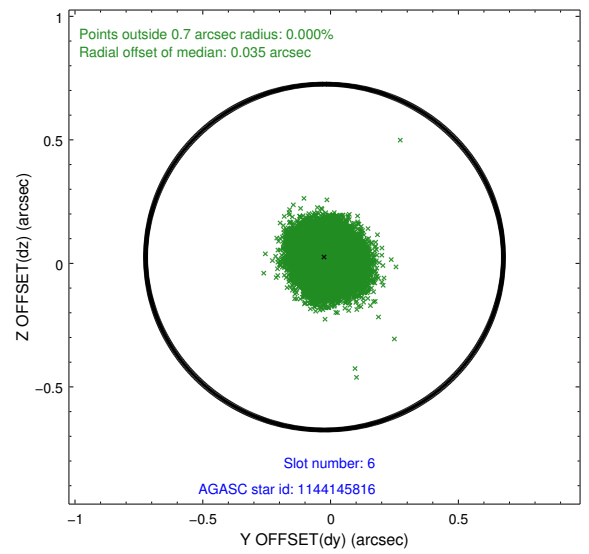
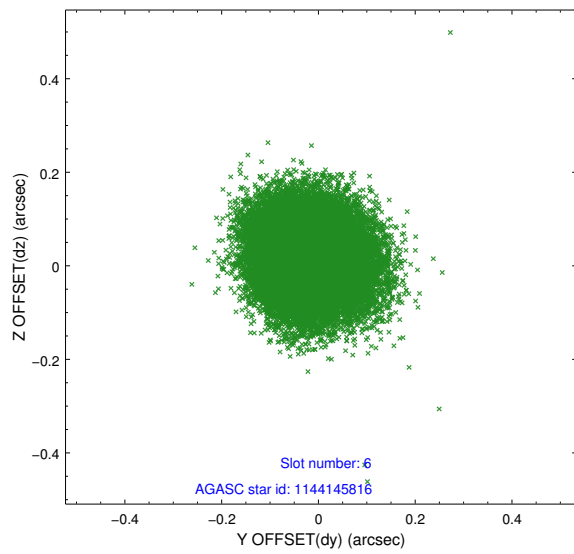
2.4.2 Slot 4



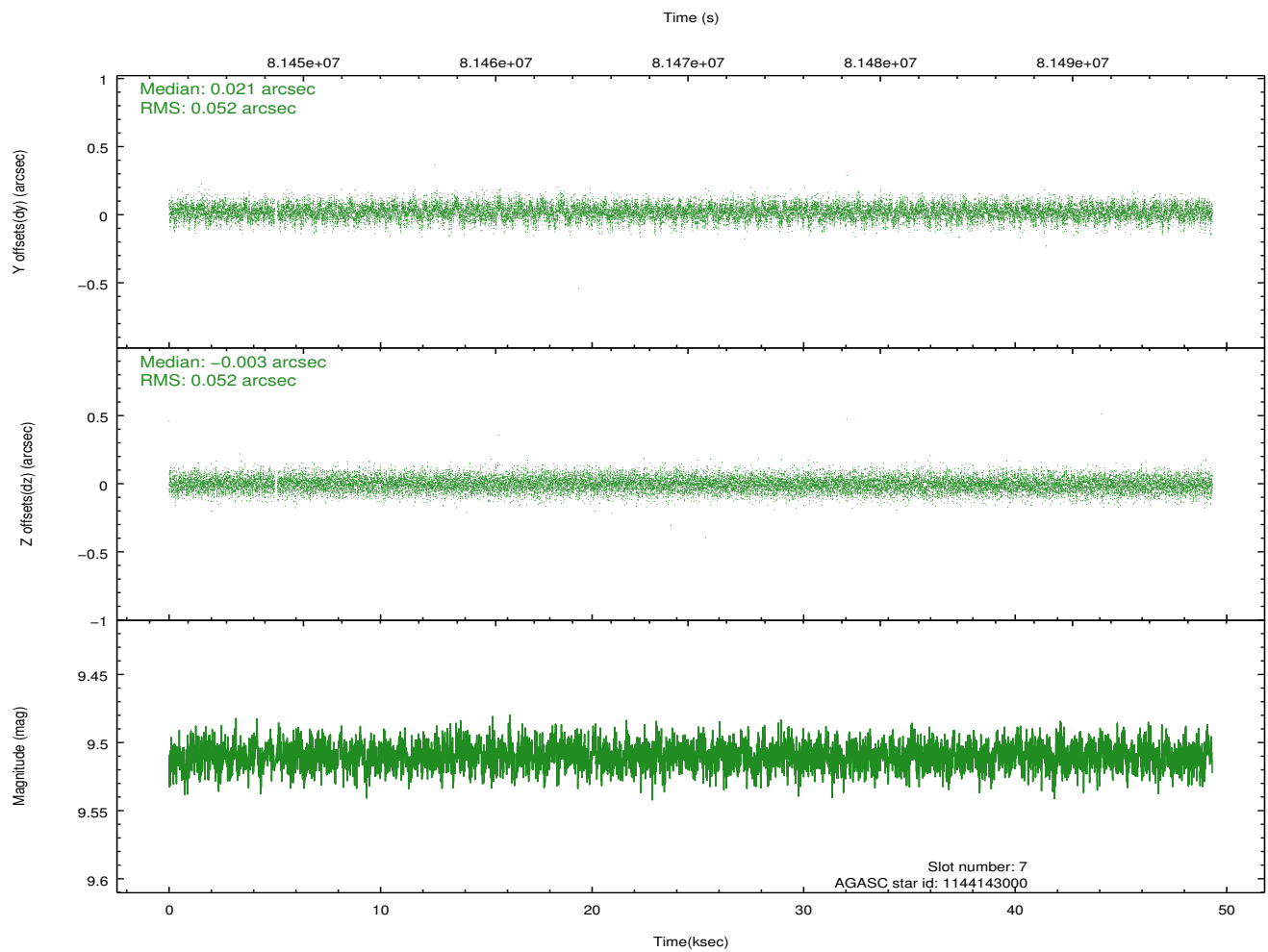
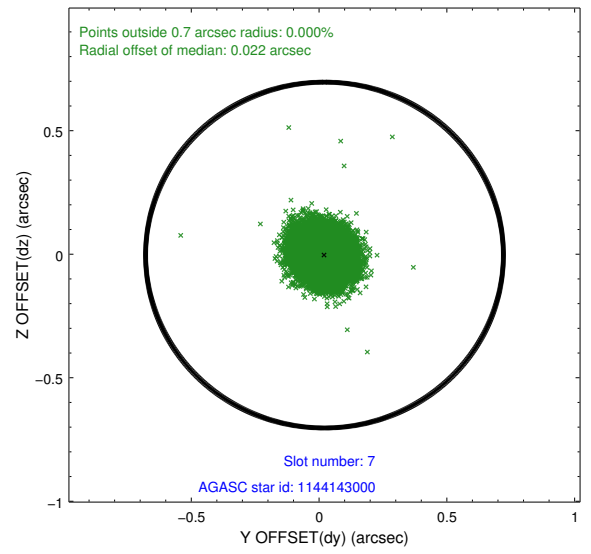
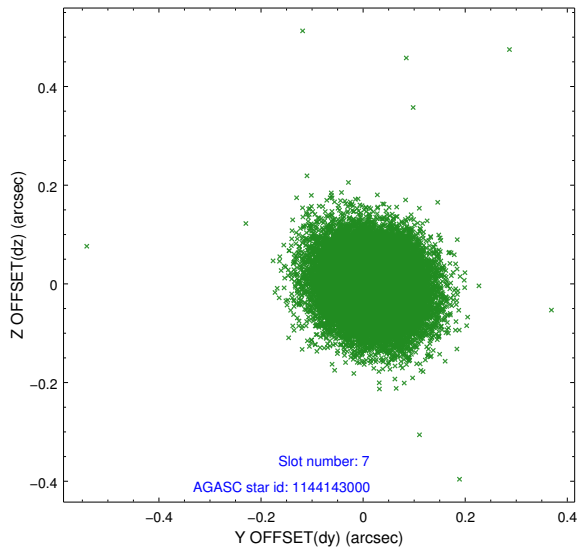
2.4.3 Slot 5



2.4.4 Slot 6

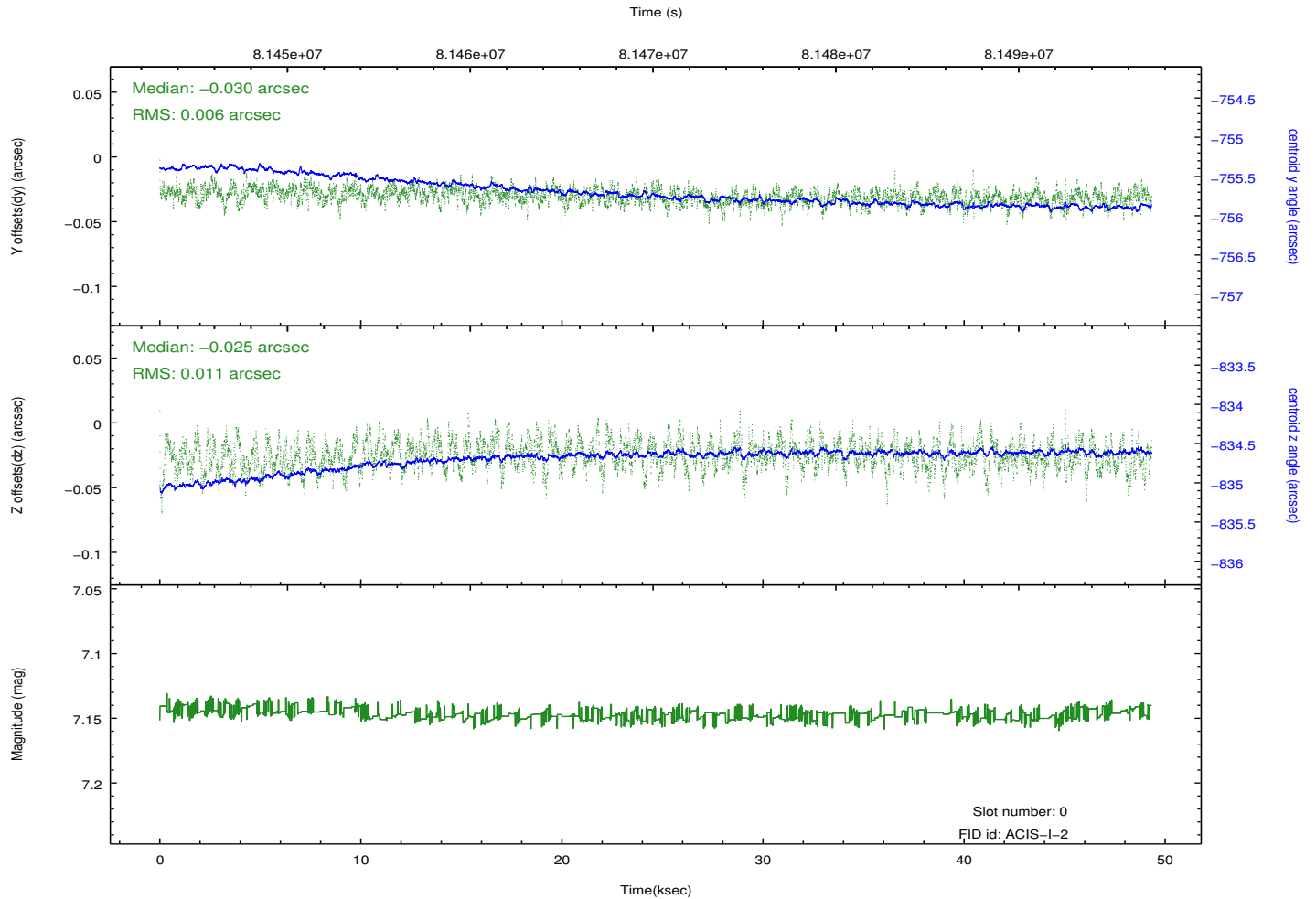
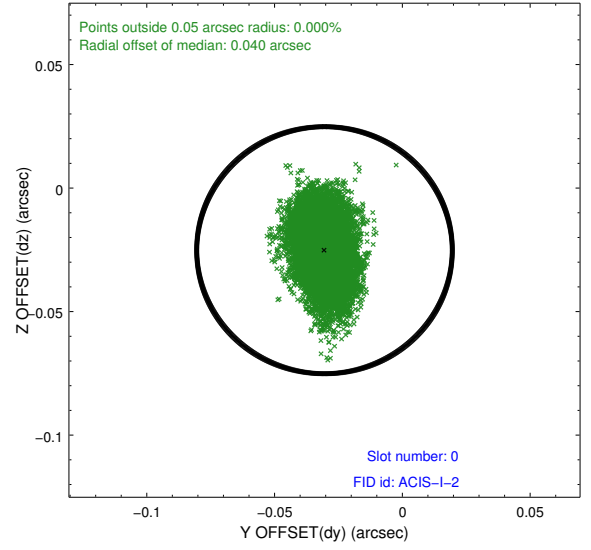
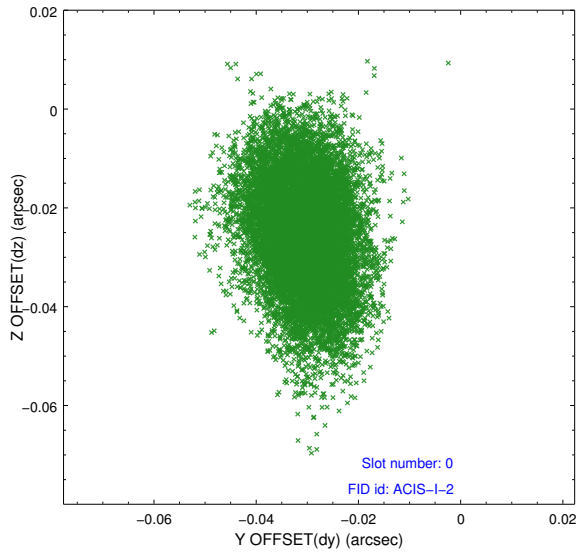


2.4.5 Slot 7

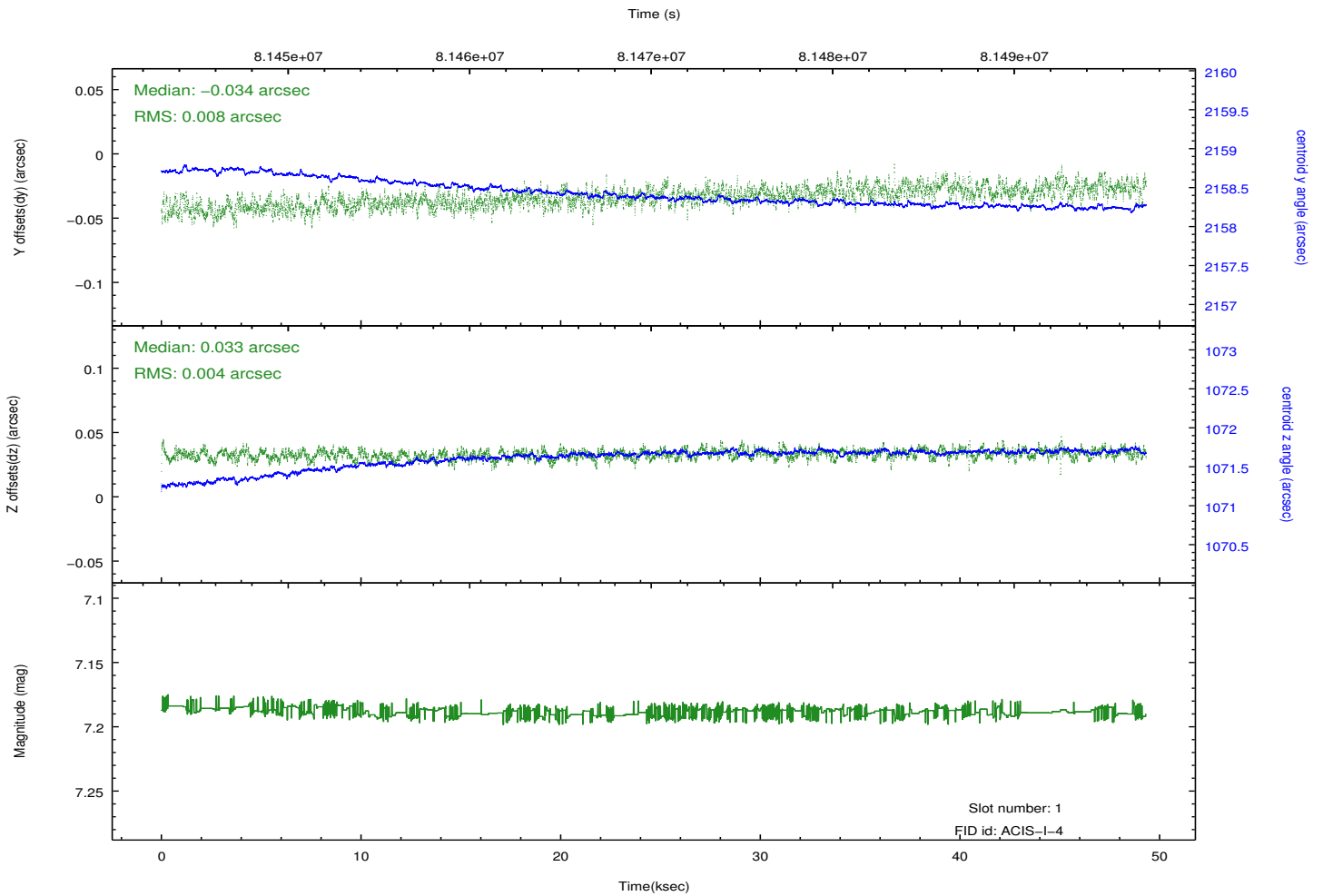
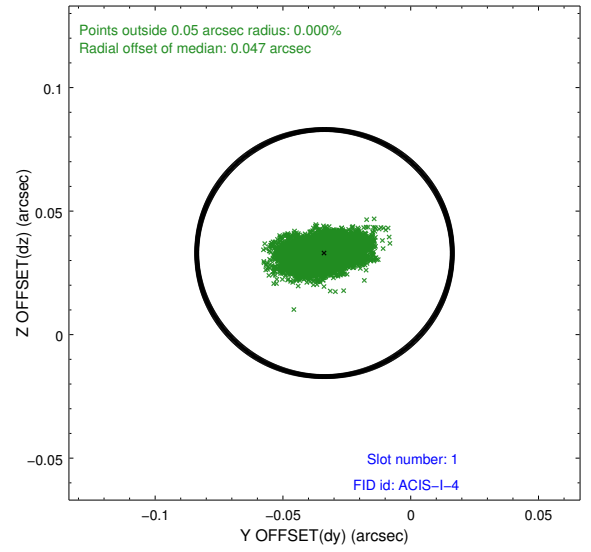
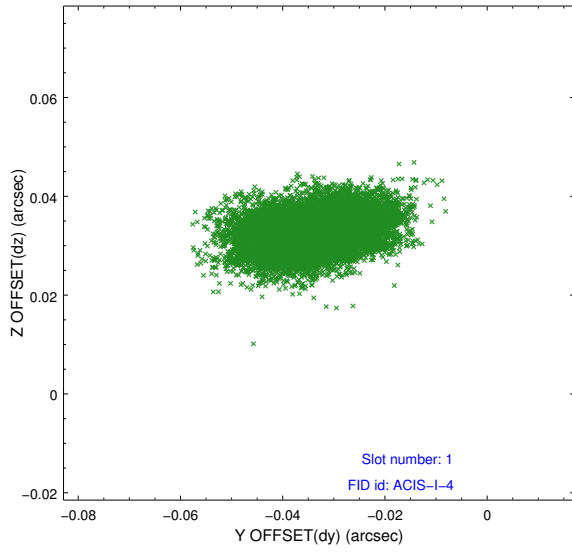


2.5 FID Slots

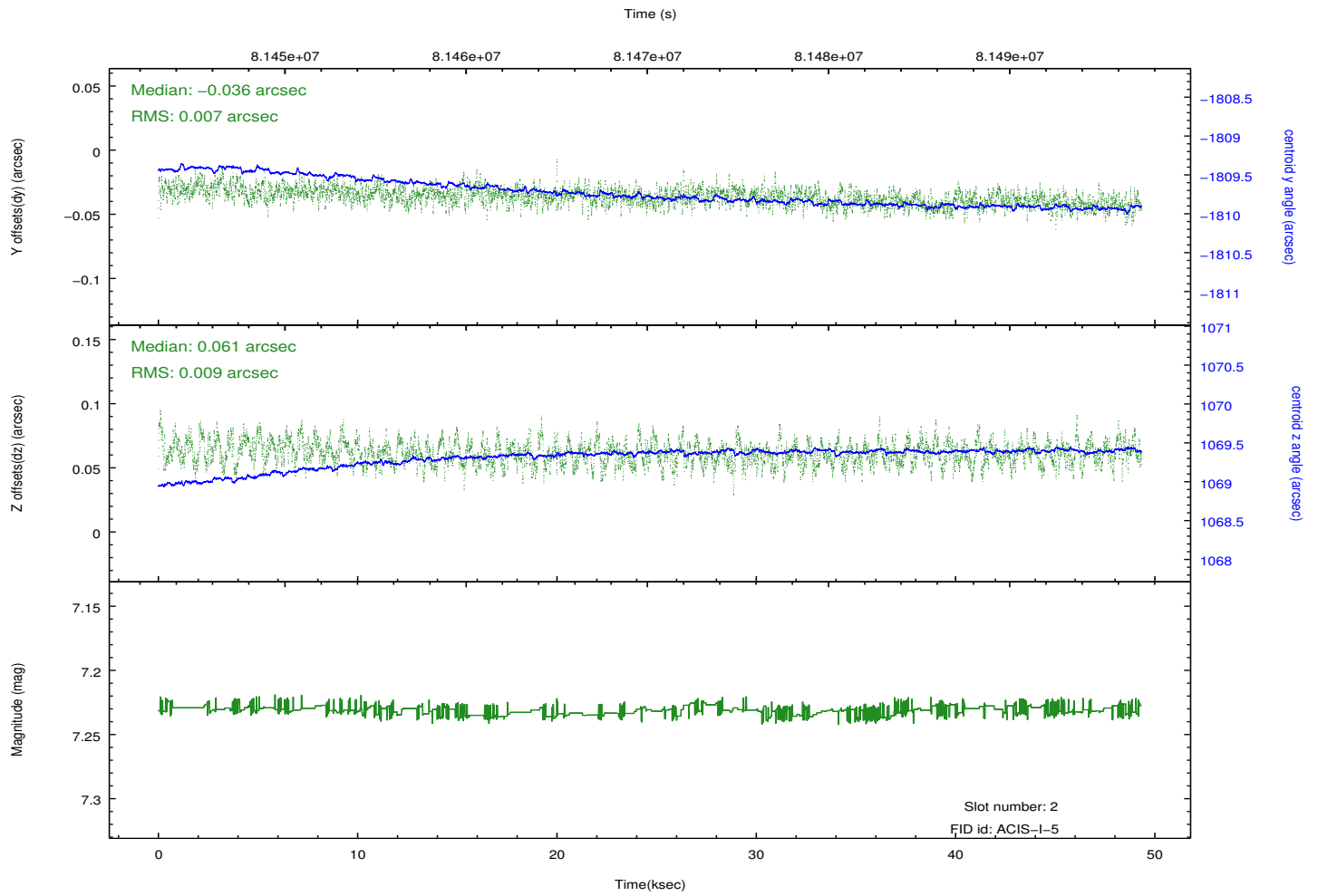
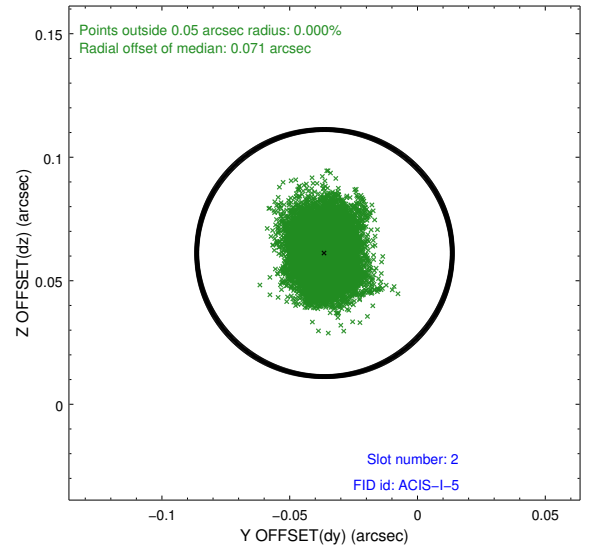
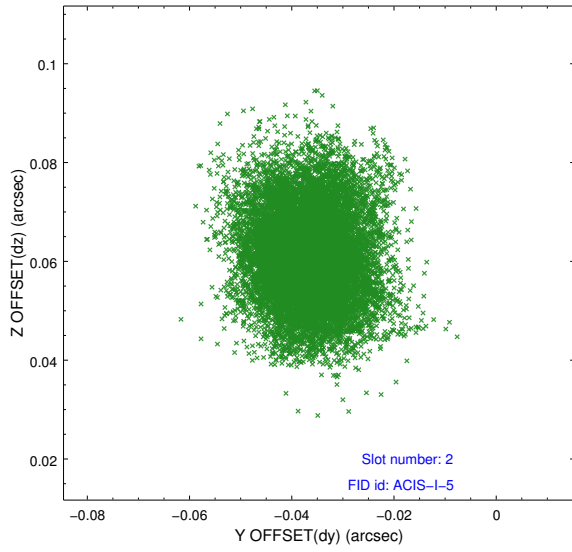
2.5.1 Slot 0



2.5.2 Slot 1



2.5.3 Slot 2



A Summary

A.1 Status

V&V Scientist	Jen Lauer
V&V Date (YYYY-MM-DD)	2012.09.06
V&V Edition	1
V&V Disposition and Status	OK
V&V Charge Time	48.963

A.2 Comments