

# V&V Reference Report

## L2 ASCDS Version : 8.4.4

Observation 7929 - L2 Version 2  
Chandra X-Ray Center

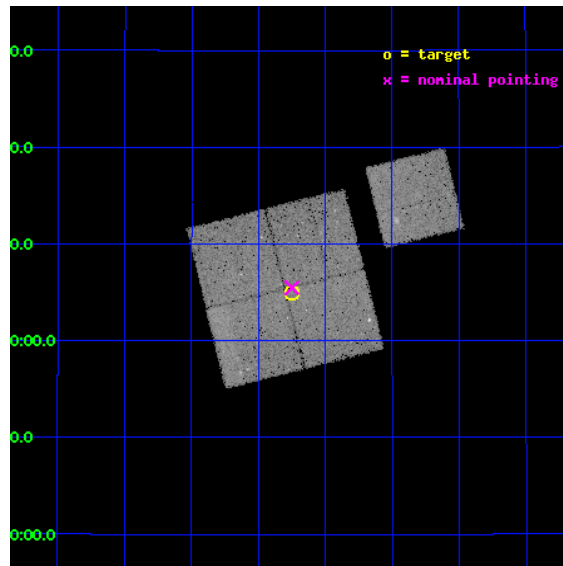
L2 Processing Date : May 1 2012

## Contents

<b>1</b>	<b>Front</b>	<b>2</b>
<b>2</b>	<b>OBI</b>	<b>3</b>
2.1	OBI . . . . .	3
2.1.1	Images . . . . .	3
2.1.2	Bias . . . . .	3
2.1.3	Parameters . . . . .	4
2.1.4	Events . . . . .	4
2.2	Compared Parameters . . . . .	5
2.3	Aspect . . . . .	6
2.4	Star Slots . . . . .	9
2.4.1	Slot 3 . . . . .	9
2.4.2	Slot 4 . . . . .	10
2.4.3	Slot 5 . . . . .	11
2.4.4	Slot 6 . . . . .	12
2.4.5	Slot 7 . . . . .	13
2.5	FID Slots . . . . .	14
2.5.1	Slot 0 . . . . .	14
2.5.2	Slot 1 . . . . .	15
2.5.3	Slot 2 . . . . .	16
<b>A</b>	<b>Summary</b>	<b>17</b>
A.1	Status . . . . .	17
A.2	Comments . . . . .	17

# 1 Front

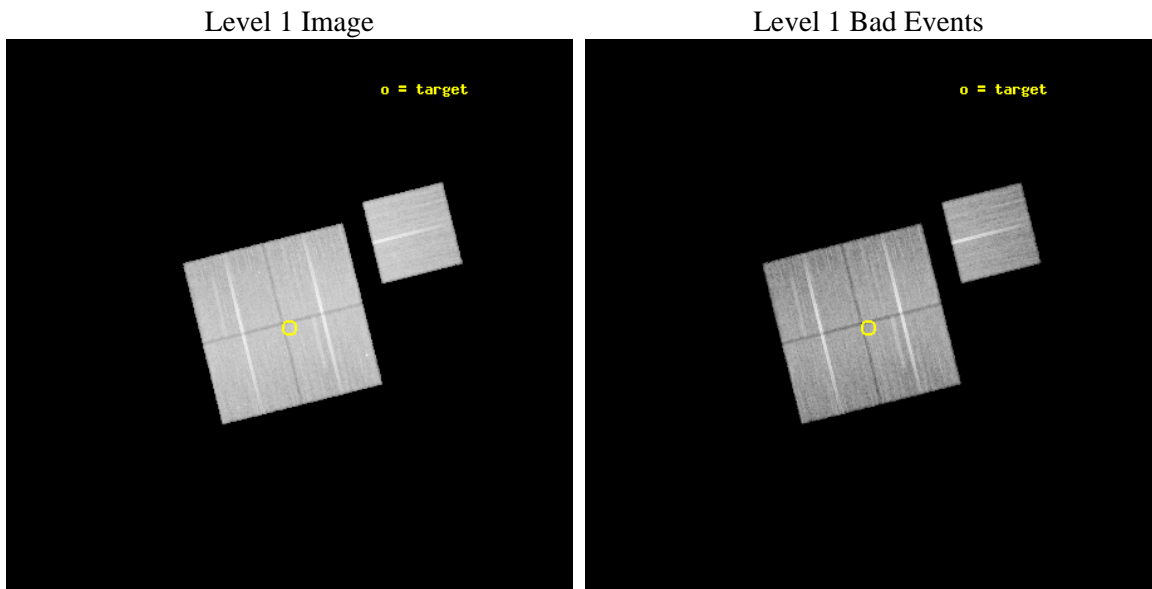
seq_num	800647	Sequence number
obs_id	7929	Observation id
title	A Complete Baryon Census in a Nearby Galaxy Group	Proposal title
observer	Dr. John Mulchaey	Principal investigator
object	NGC2563-P6	Source name
dtcycle	0	&#160
cycle	P	events from which exps? Prim/Second/Both
ra_targ	124.812917	Observer's specified target RA [deg]
dec_targ	21.083167	Observer's specified target Dec [deg]
ra_nom	124.81241344135	Nominal RA [deg]
dec_nom	21.091233435372	Nominal Dec [deg]
roll_nom	76.03540440994	Nominal Roll [deg]
revision	2	Processing version of data
ontime	28690.459230483	Sum of GTIs [s]
livetime	28315.597259028	Livetime [s]
ontime0	28693.60022068	Sum of GTIs [s]
ontime1	28690.459389865	Sum of GTIs [s]
ontime2	28690.459260285	Sum of GTIs [s]
ontime3	28690.459230483	Sum of GTIs [s]
ontime6	28693.60022068	Sum of GTIs [s]
l2events	100850	Number of level 2 events



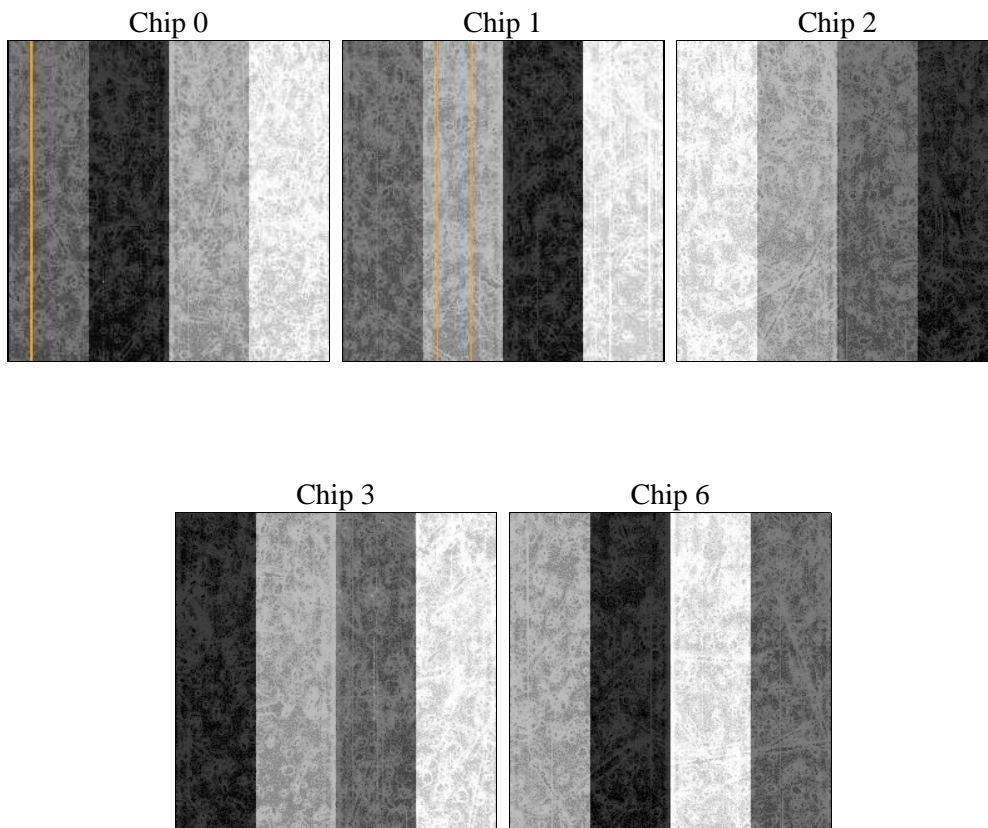
## 2 OBI

### 2.1 OBI

#### 2.1.1 Images



#### 2.1.2 Bias



### 2.1.3 Parameters

obi_num	0	Obi number	sched_exp_time	28922.000000	[s] Scheduled observation exposure time
ascdsver	8.4.4	Processing system revision	ontime	28690.459230483	Sum of GTIs [s]
caldsver	4.4.9	&#160	ontime0	28693.60022068	Sum of GTIs [s]
date	2012-05-01T21:39:42	Date and time of file creation	ontime1	28690.459389865	Sum of GTIs [s]
revision	2	Processing version of data	ontime2	28690.459260285	Sum of GTIs [s]
			ontime3	28690.459230483	Sum of GTIs [s]
			ontime6	28693.60022068	Sum of GTIs [s]
			l1events	1170452	Number of level 1 events

### 2.1.4 Events

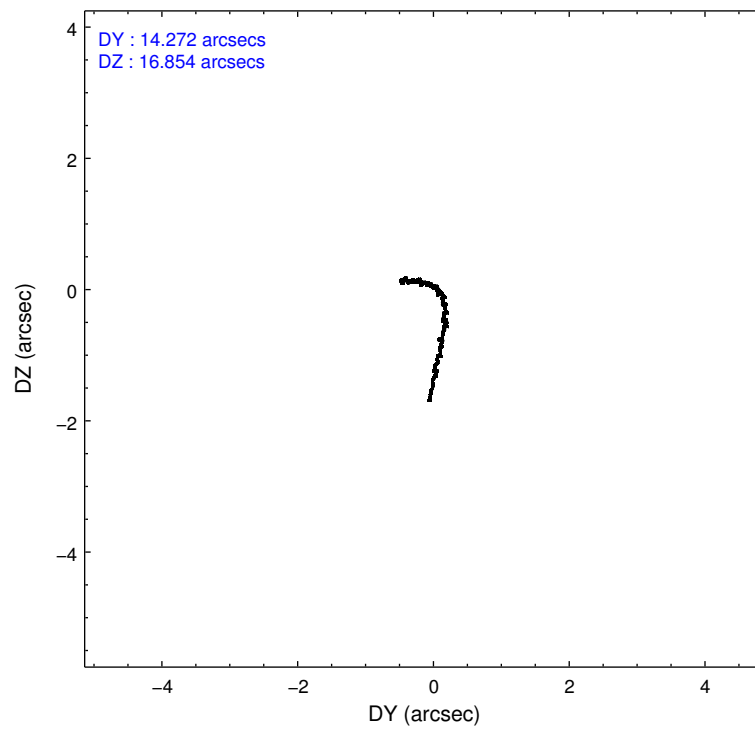
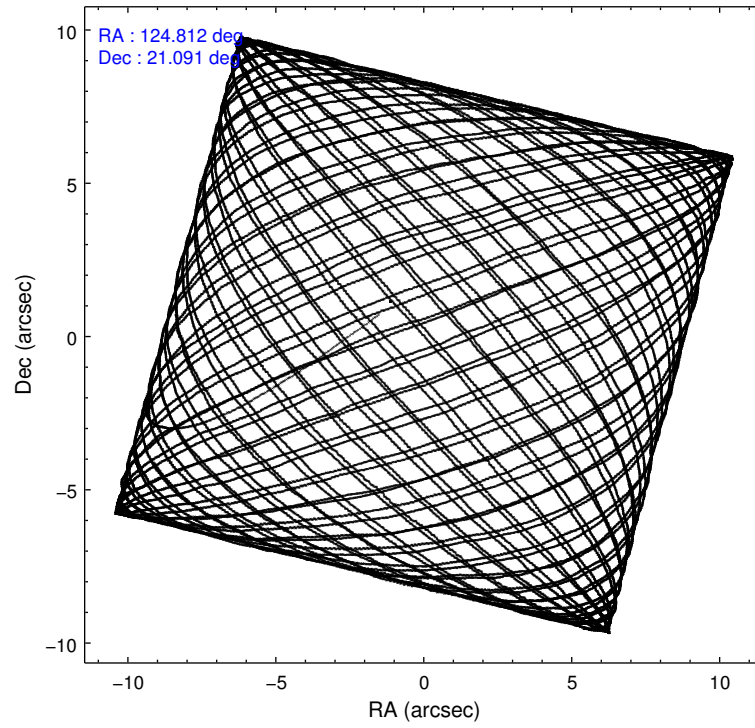
	ccd 0	ccd 1	ccd 2	ccd 3	ccd 6
level 1 events	219707	226012	246553	237581	240599
rejected events	195598	198693	223532	214680	216328
rejected %	89%	87%	90%	90%	89%

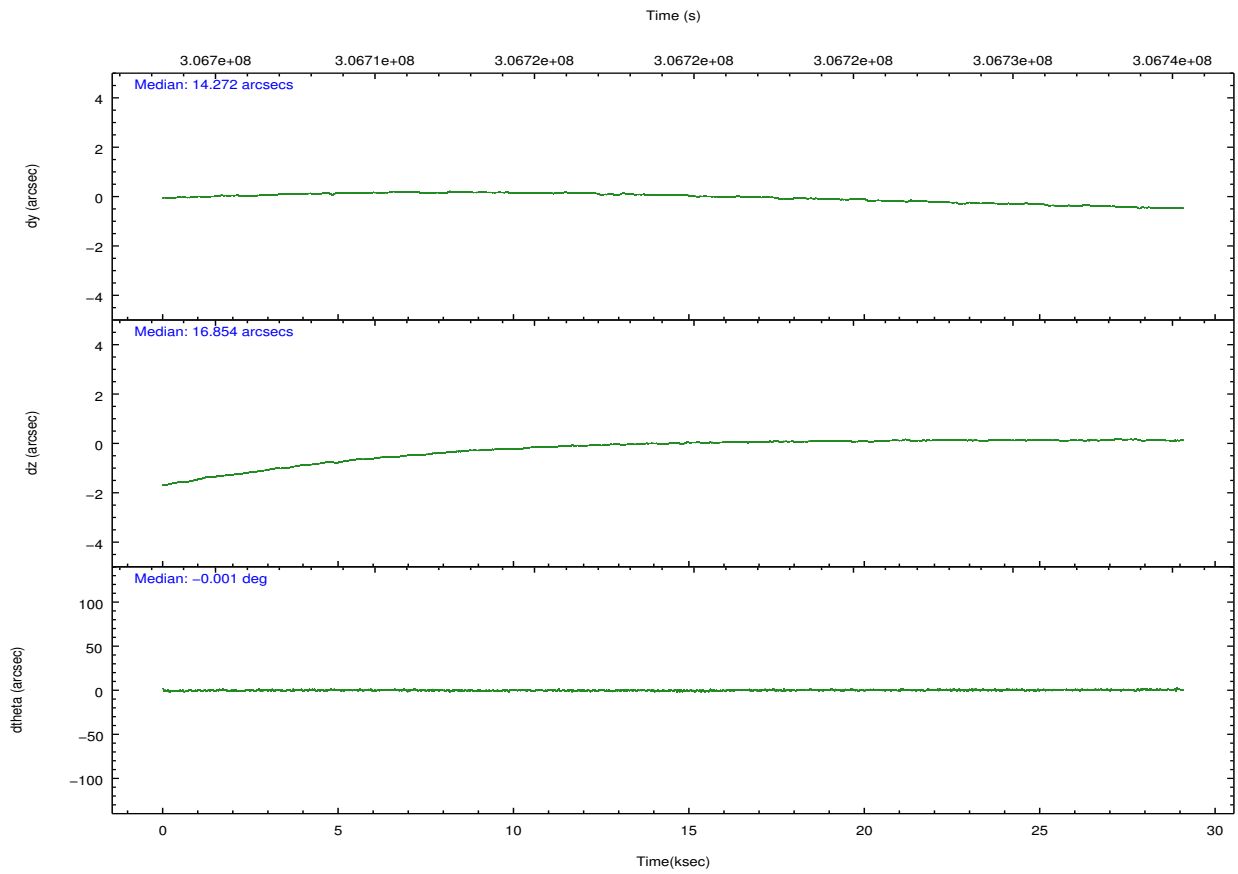
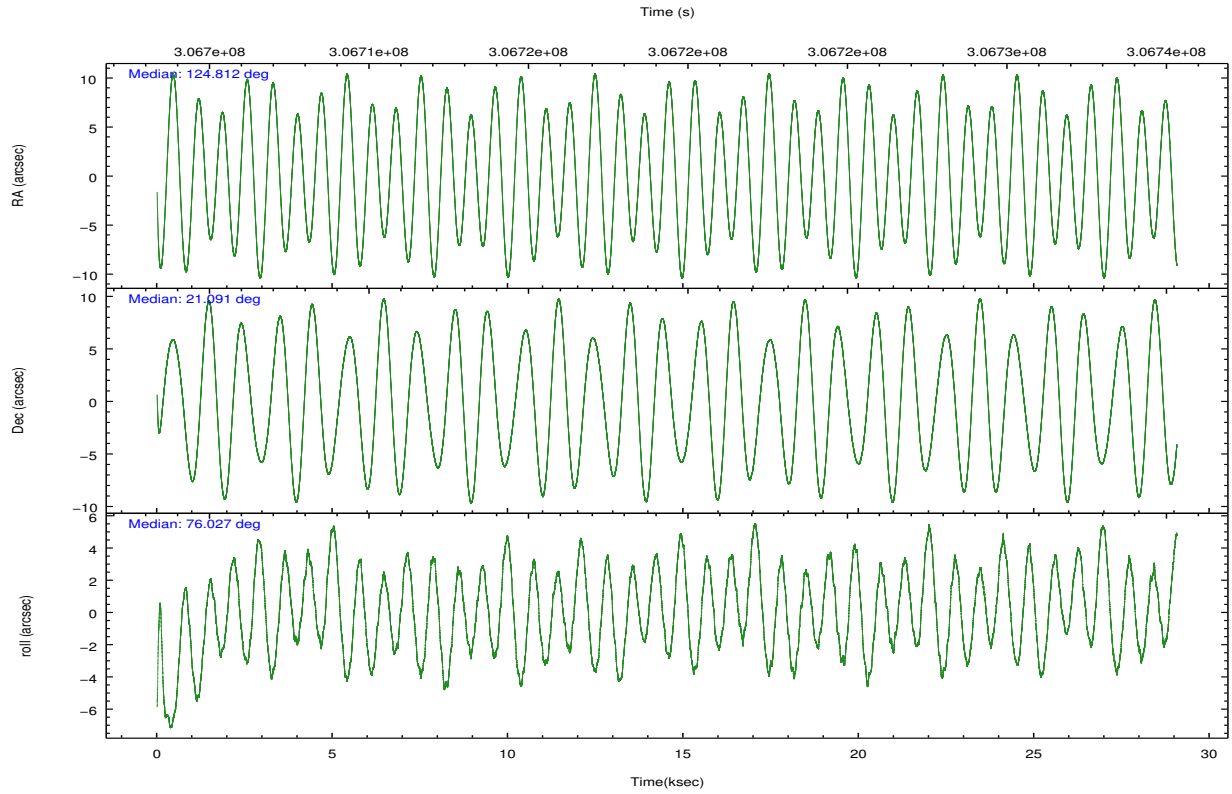
	ccd 0	ccd 1	ccd 2	ccd 3	ccd 6
grade 0 events	8666	10093	8363	8287	8393
	3%	4%	3%	3%	3%
grade 1 events	119	117	117	134	120
	0%	0%	0%	0%	0%
grade 2 events	5720	6253	5556	5022	5449
	2%	2%	2%	2%	2%
grade 3 events	2680	2890	2436	2626	2680
	1%	1%	0%	1%	1%
grade 4 events	2490	2763	2496	2508	2755
	1%	1%	1%	1%	1%
grade 5 events	8237	8944	7521	9465	9313
	3%	3%	3%	3%	3%
grade 6 events	4558	5330	4174	4461	4998
	2%	2%	1%	1%	2%
grade 7 events	187237	189622	215890	205078	206891
	85%	83%	87%	86%	85%

## 2.2 Compared Parameters

Parameter	Planned	Actual	Parameter	Planned	Actual
Instrument	ACIS	ACIS	Obspar format version number	7	7
Detector	ACIS-01236	ACIS-01236	Obspar file type	PREDICTED	ACTUAL
Grating	NONE	NONE	Obspar update status	NONE	UPDATED
Data mode	VFAINT	VFAINT	CCD I0 on	Y	Y
Observation mode	POINTING	POINTING	CCD I1 on	Y	Y
[deg] Pointing RA	124.820670	124.8124134413485	CCD I2 on	Y	Y
[deg] Pointing Dec	21.064833	21.09123343537245	CCD I3 on	Y	Y
[deg] Pointing Roll	75.823757	76.0354044099398	CCD S0 on	N	N
[mm] SIM focus pos	-0.782348	-0.7809083437167272	CCD S1 on	N	N
[mm] SIM defocus	0	0.001439871863259334	CCD S2 on	O1	Y
[mm] SIM translation stage pos	-233.592463	-233.5874344608287	CCD S3 on	N	N
[mm] SIM translation stage offset	0	-0.005018542100998502	CCD S4 on	N	N
[s] Observation start time (MET)	306704961.184000	306703893.51415	CCD S5 on	N	N
Observation start date	2007-09-20T19:48:16	2007-09-20T19:31:33	Number of optional ACIS chips dropped	0	0
[s] Observation end time (MET)	306733883.184000	306734017.7531	On-chip summing requested	N	N
Observation end date	2007-09-21T03:50:18	2007-09-21T03:53:37	Subarray requested	NONE	NONE
Read mode	TIMED	TIMED	Alternating exposures requested	N	N
			[s] Primary exposure time	0.000000	3.1

## 2.3 Aspect



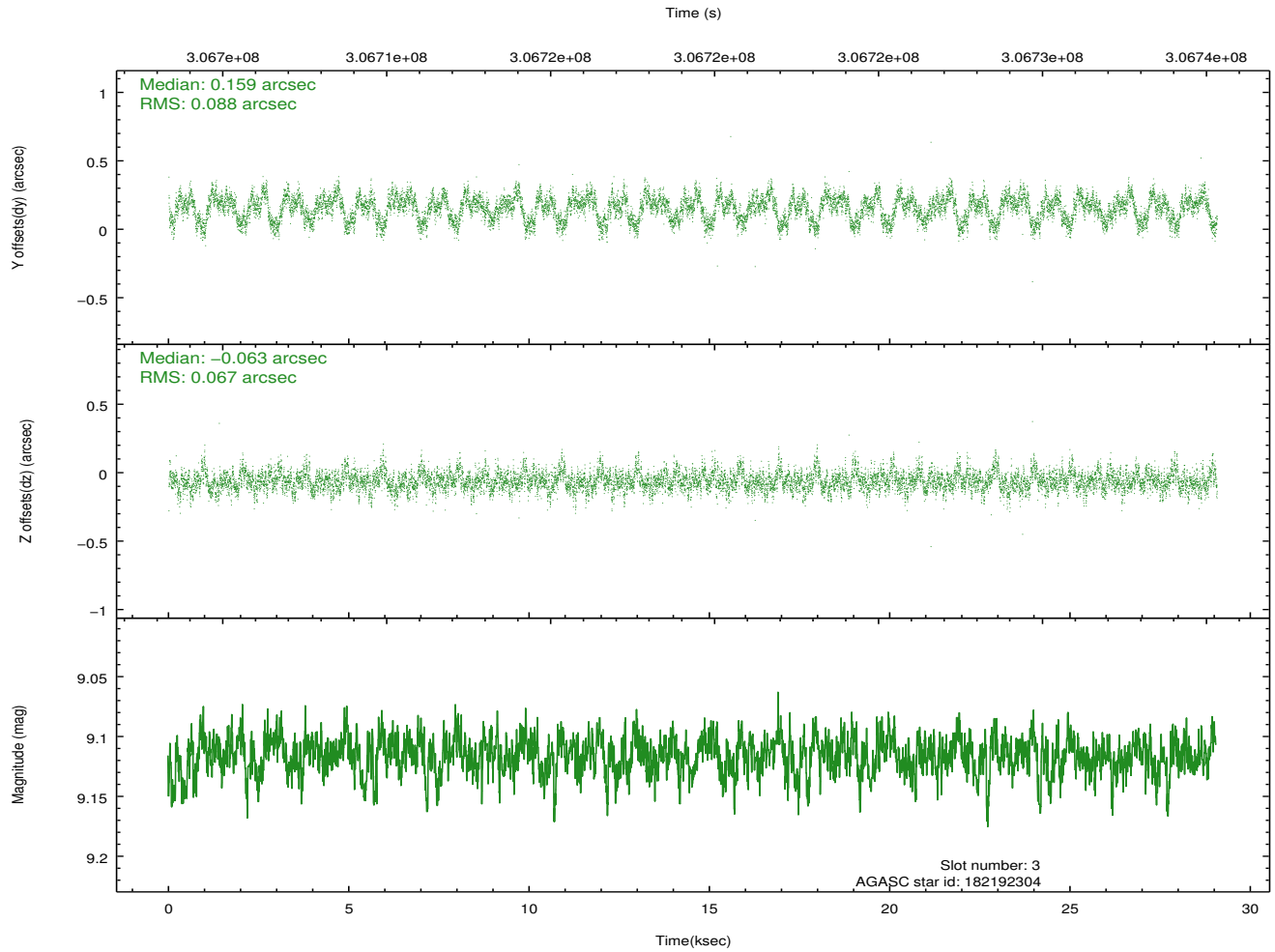
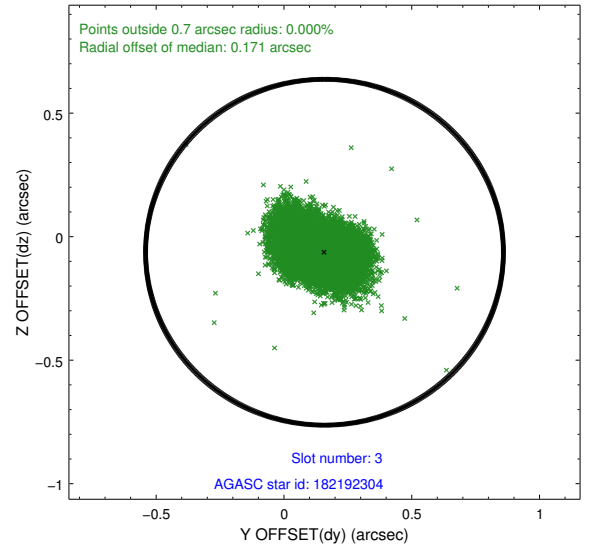
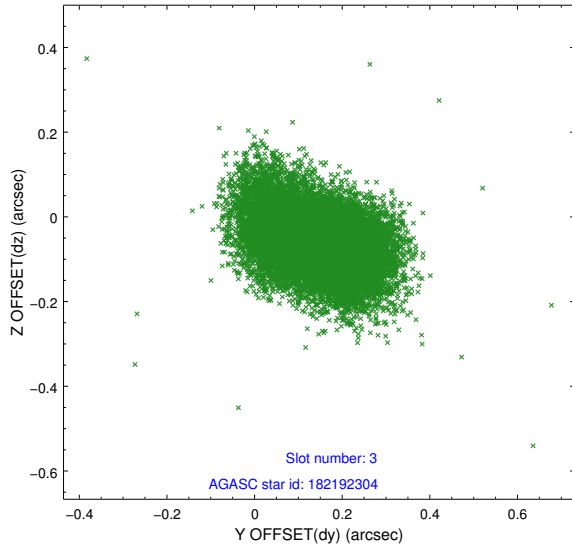


### Slot Statistics

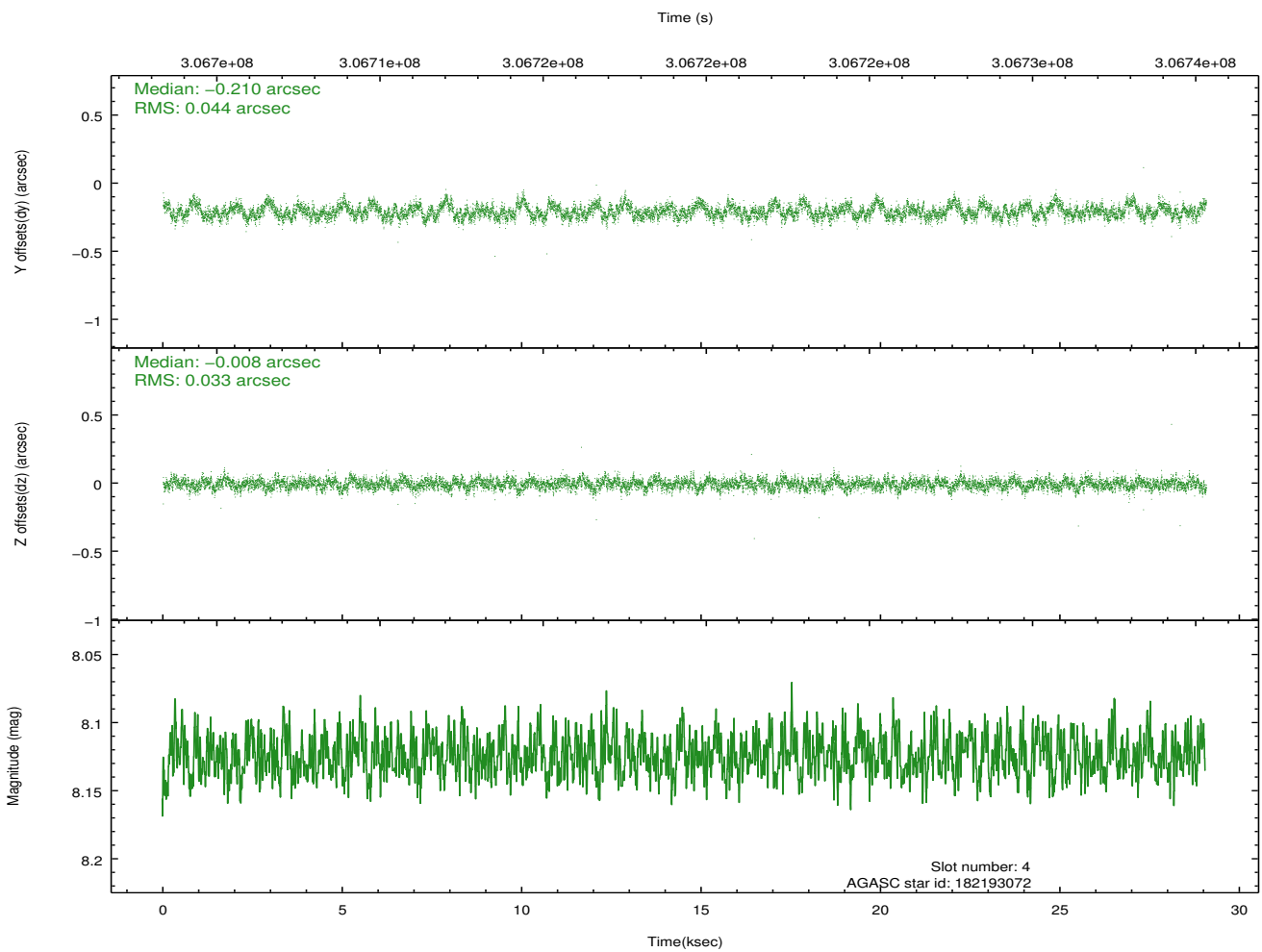
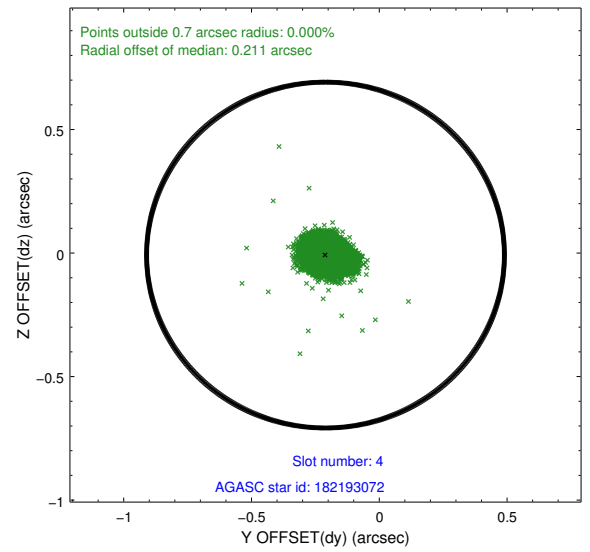
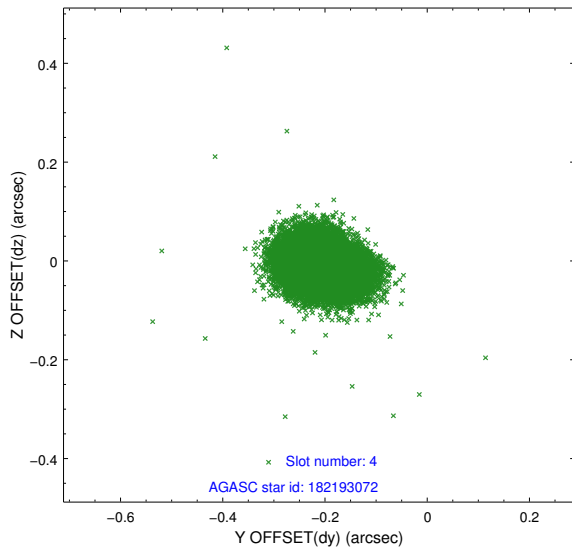
slot	status	id	mag	n_pts	med_dy	med_dz	dr1	dr2	ra	dec	mean_y	mean_z
0	FID	ACIS-I-1	7.22	7090	0.001	-0.069	0.014	0.035	0.000000	0.000000	925.25	-840.33
1	FID	ACIS-I-4	7.15	7088	0.159	0.072	0.011	0.028	0.000000	0.000000	2145.52	1059.56
2	FID	ACIS-I-5	7.21	7090	-0.257	0.068	0.009	0.015	0.000000	0.000000	-1822.88	1057.55
3	GUIDE	182192304	9.12	14165	0.159	-0.063	0.118	0.194	124.313502	21.181082	-8.57	1753.85
4	GUIDE	182193072	8.12	14172	-0.210	-0.008	0.058	0.094	124.468170	21.177590	104.89	1247.09
5	GUIDE	182195136	8.57	14176	0.252	0.217	0.070	0.115	124.931899	20.918080	-419.93	-491.80
6	GUIDE	182201632	7.63	14181	-0.132	-0.034	0.066	0.103	124.727284	21.494130	1421.76	681.93
7	GUIDE	182202936	7.81	14177	-0.060	-0.113	0.061	0.097	124.849962	21.257255	695.83	74.16

## 2.4 Star Slots

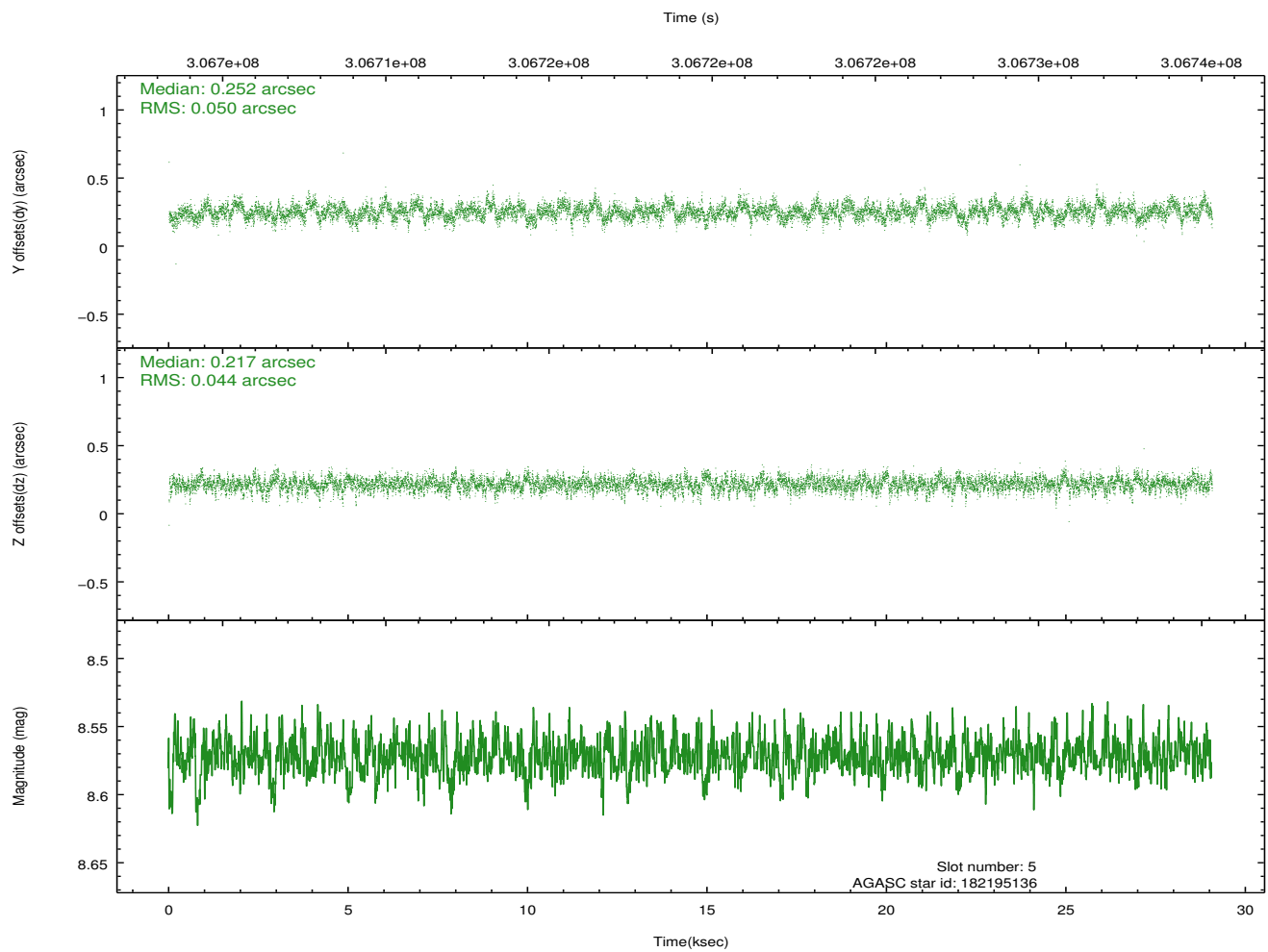
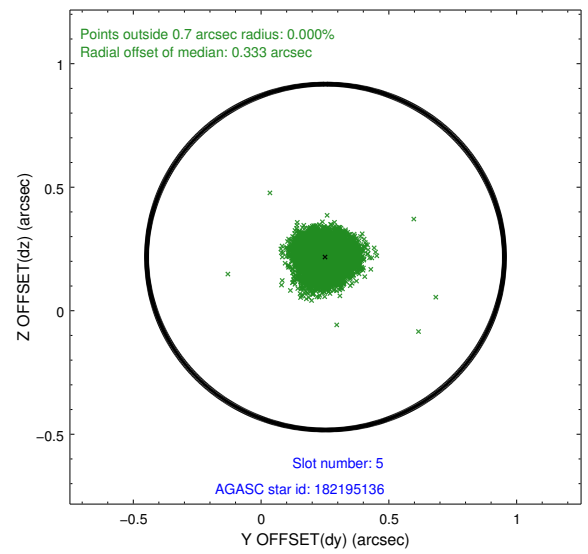
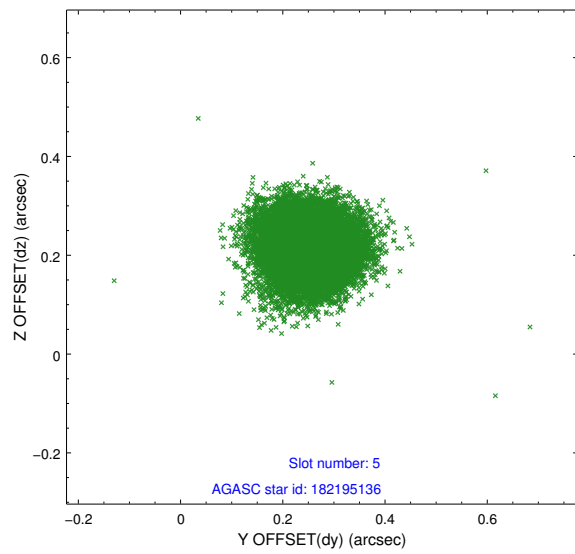
### 2.4.1 Slot 3



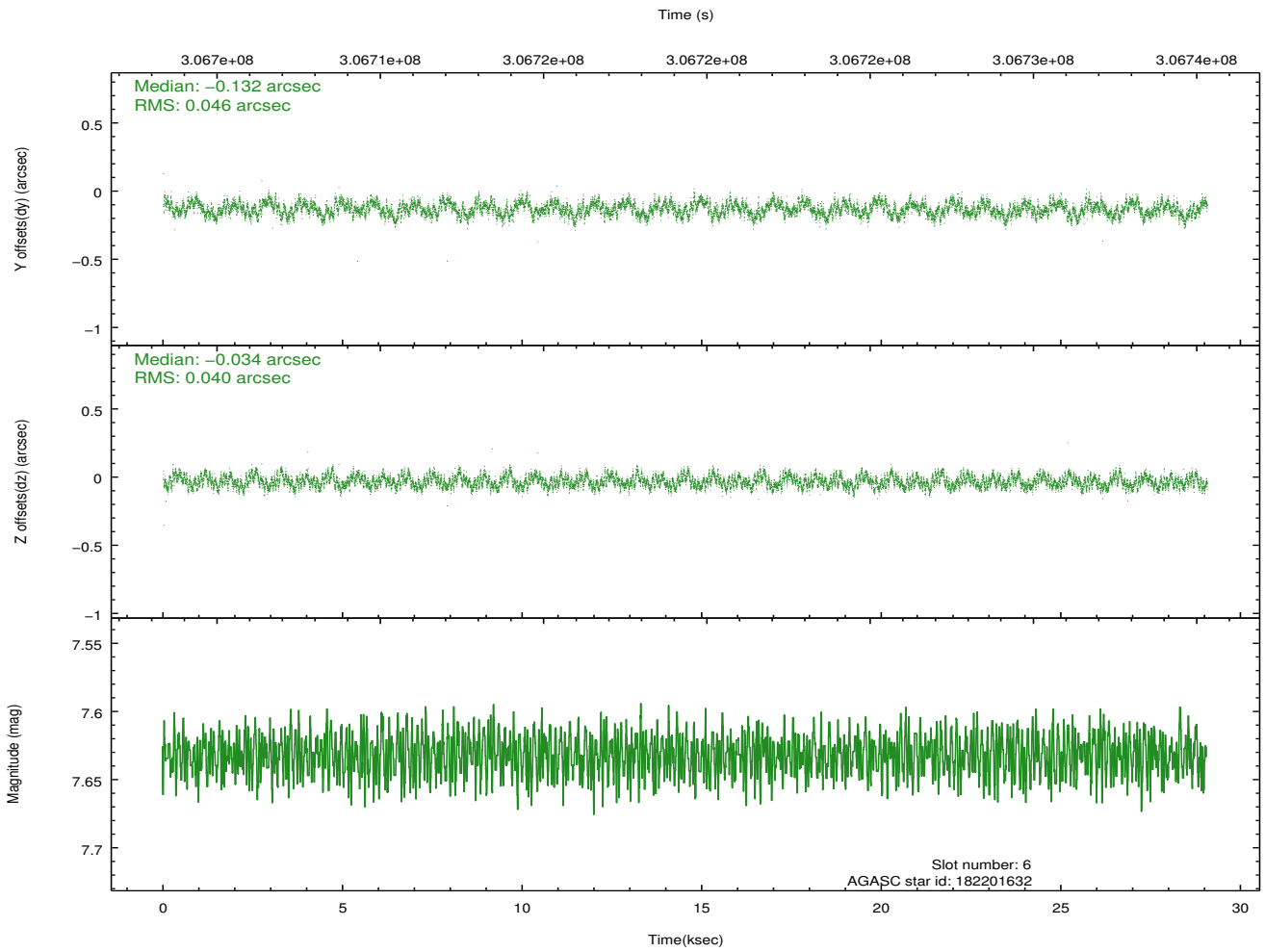
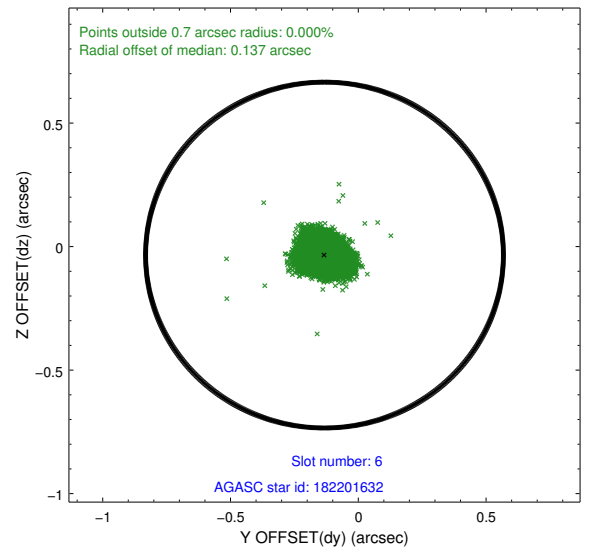
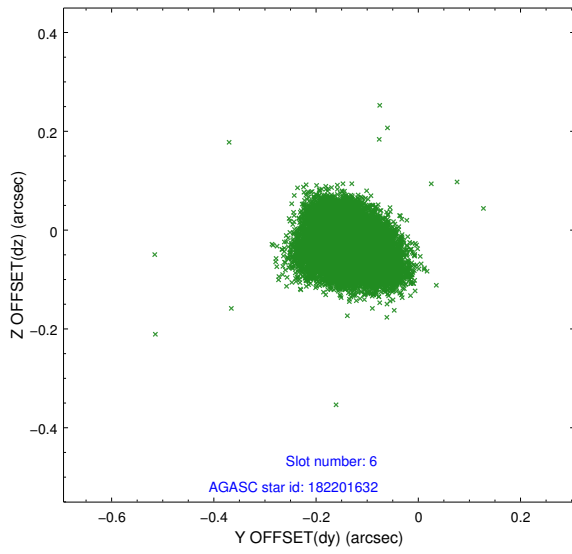
## 2.4.2 Slot 4



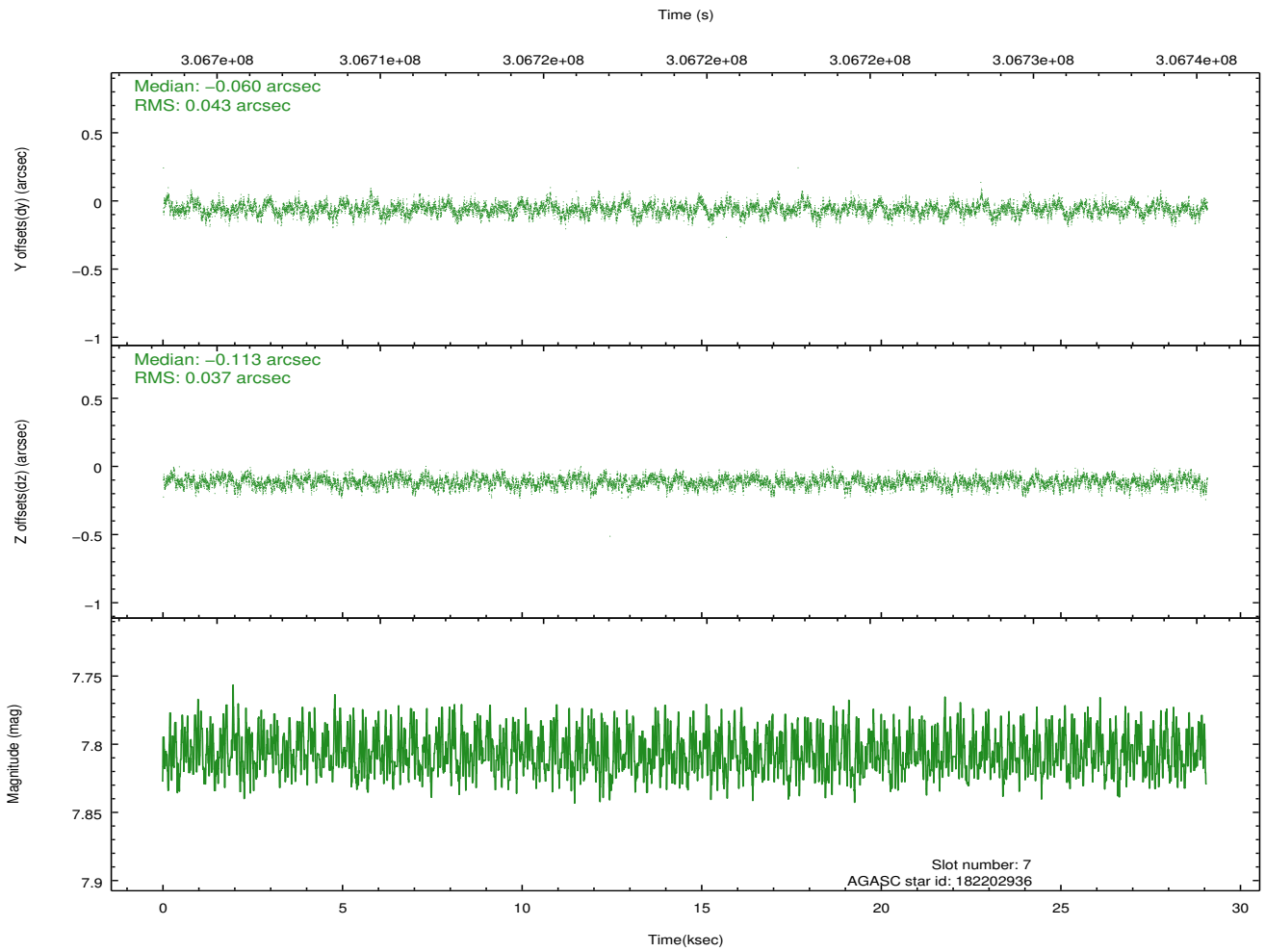
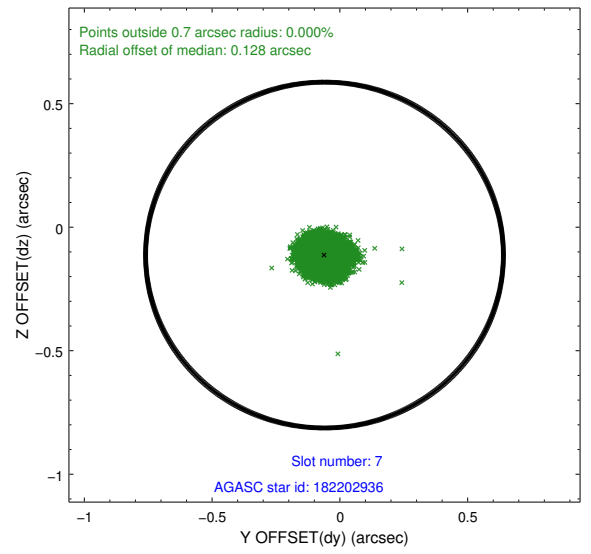
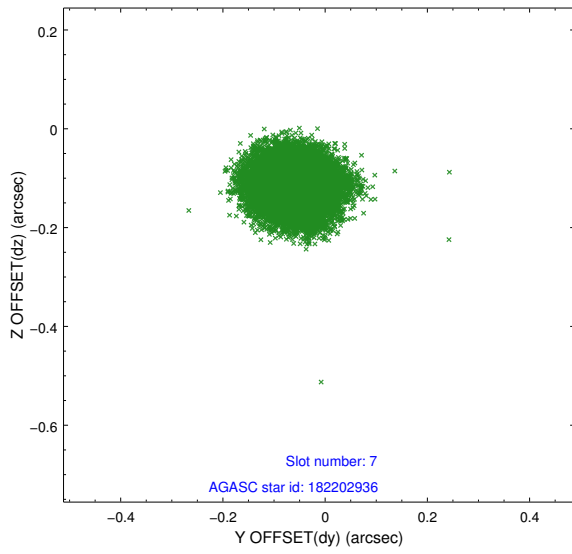
### 2.4.3 Slot 5



### 2.4.4 Slot 6

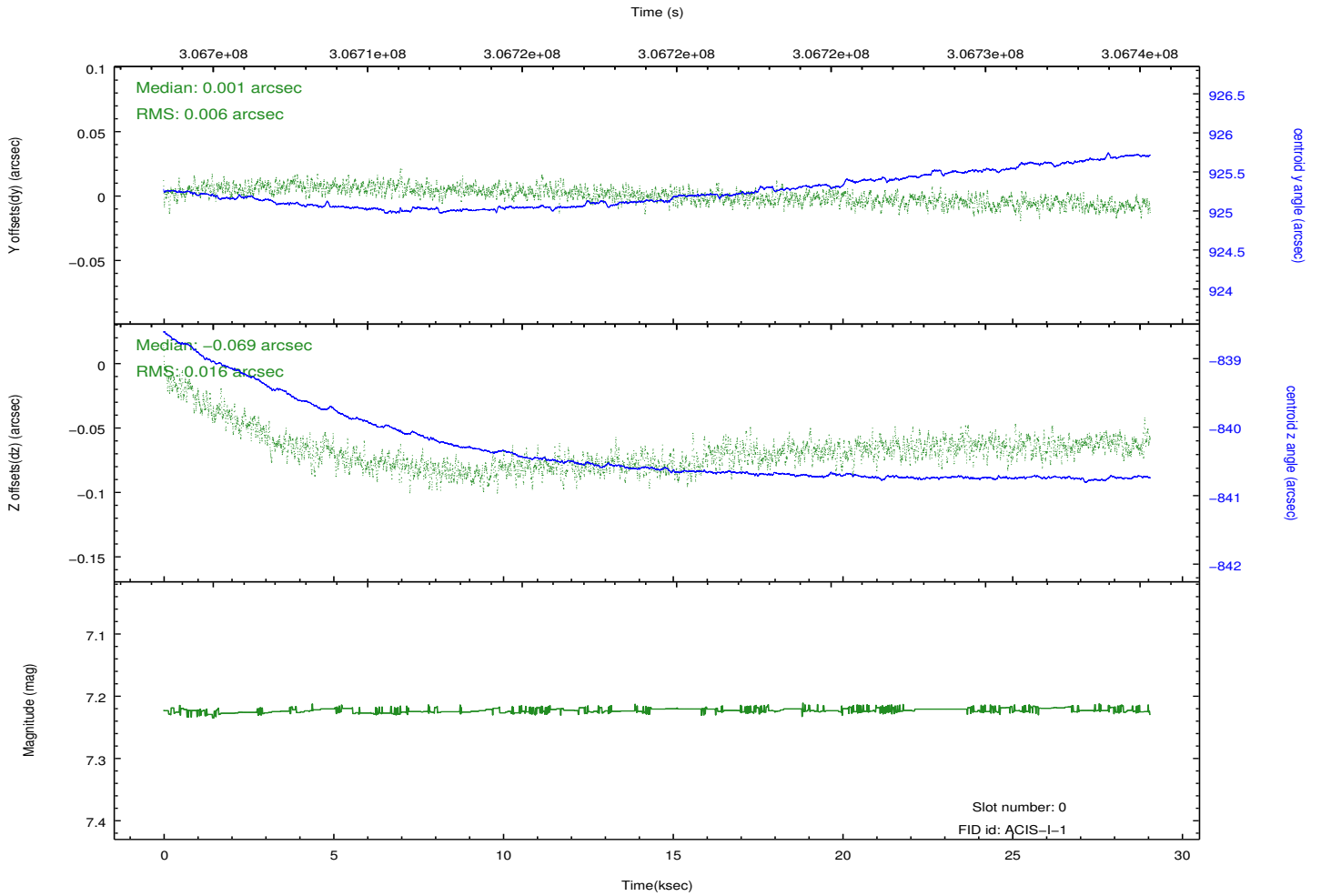
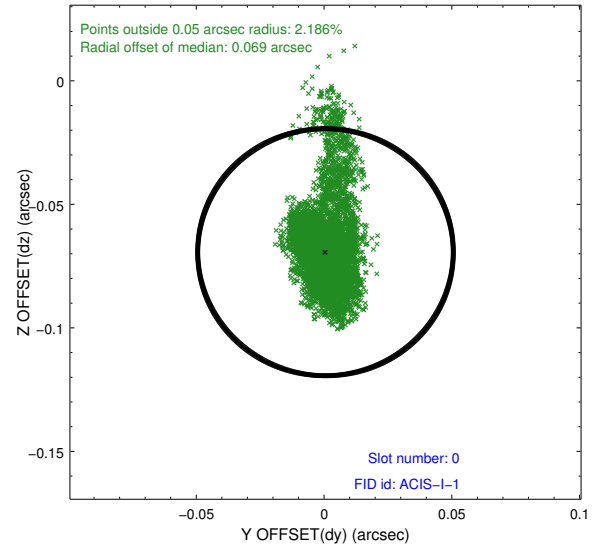
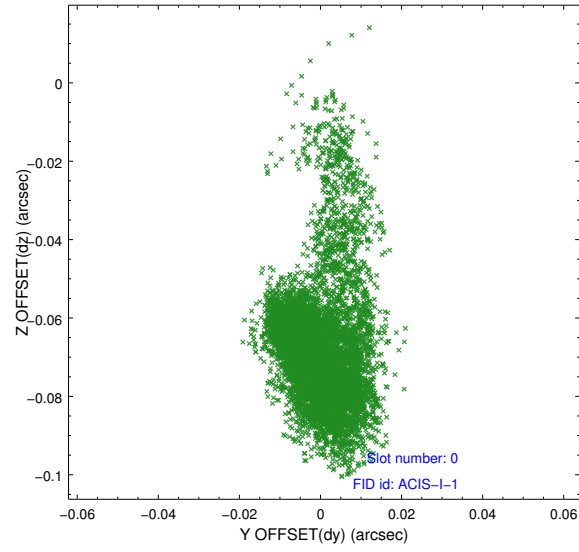


### 2.4.5 Slot 7

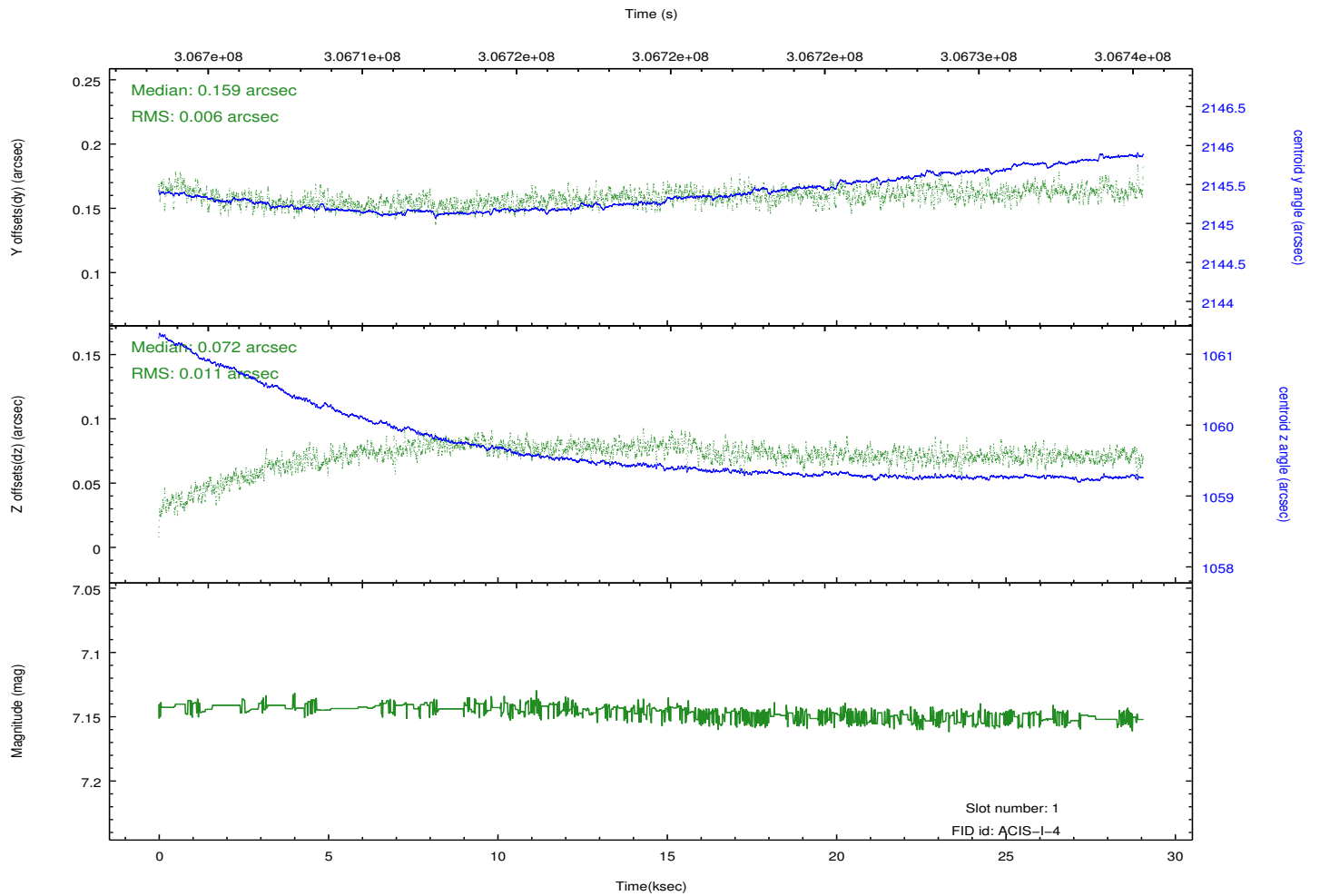
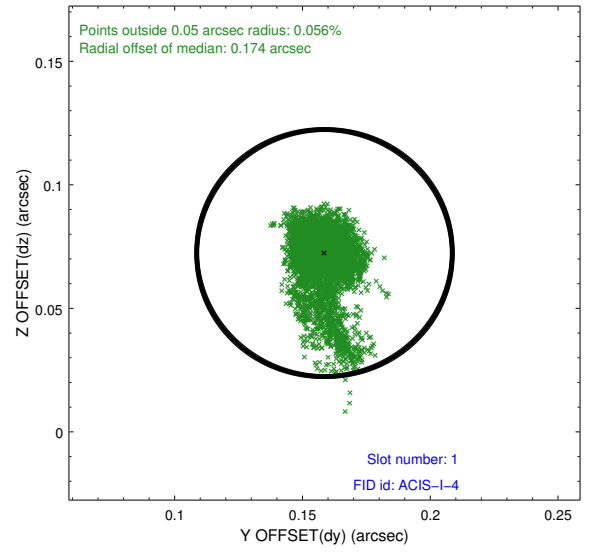
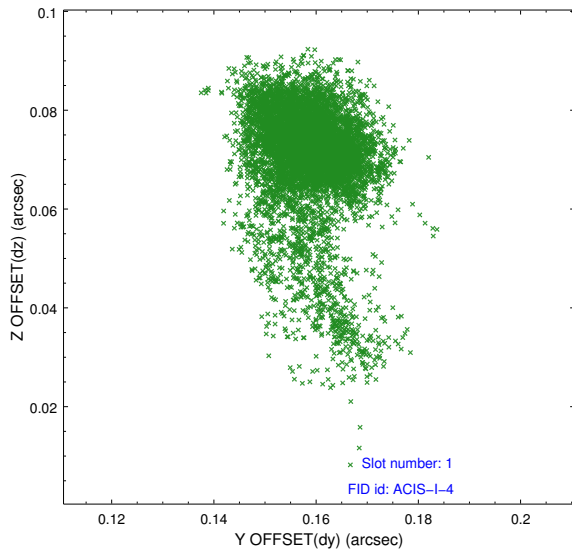


## 2.5 FID Slots

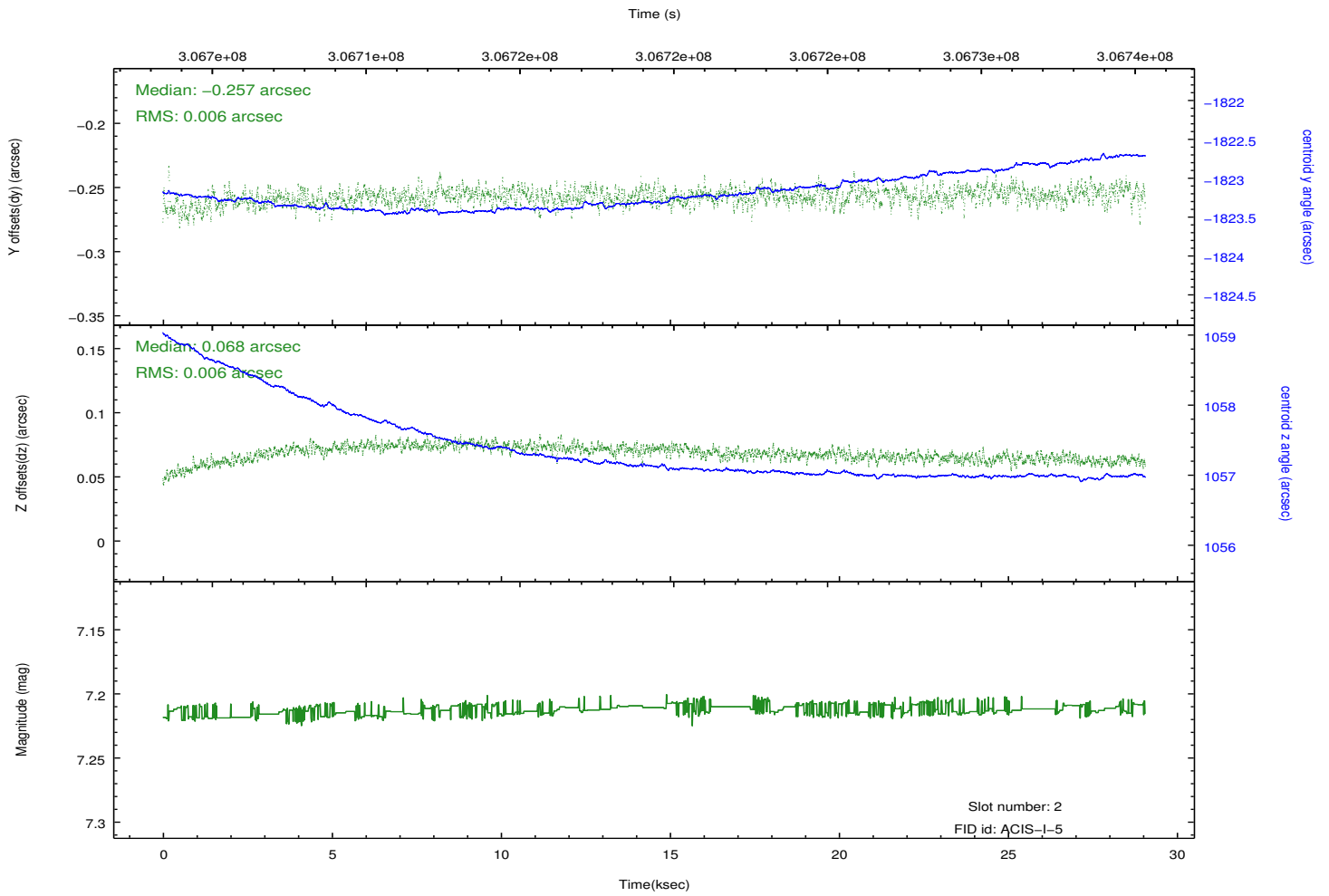
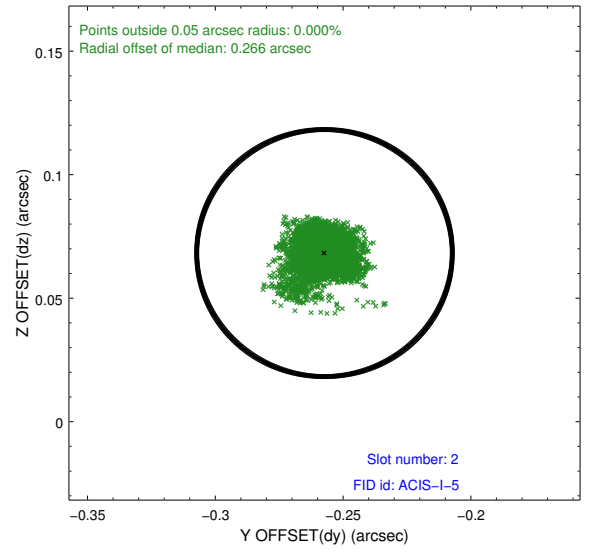
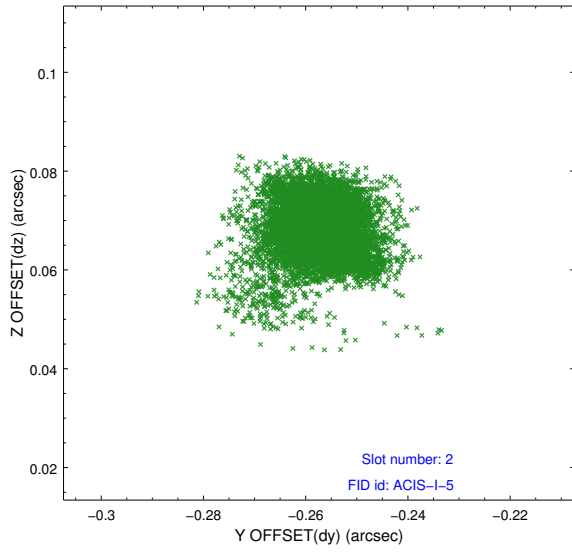
### 2.5.1 Slot 0



## 2.5.2 Slot 1



### 2.5.3 Slot 2



# A Summary

## A.1 Status

V&V Scientist	Jen Lauer
V&V Date (YYYY-MM-DD)	2012.05.04
V&V Edition	1
V&V Disposition and Status	OK
V&V Charge Time	28.6904592

## A.2 Comments