

# V&V Reference Report

## L2 ASCDS Version : 8.4.4

Observation 8209 - L2 Version 2  
Chandra X-Ray Center

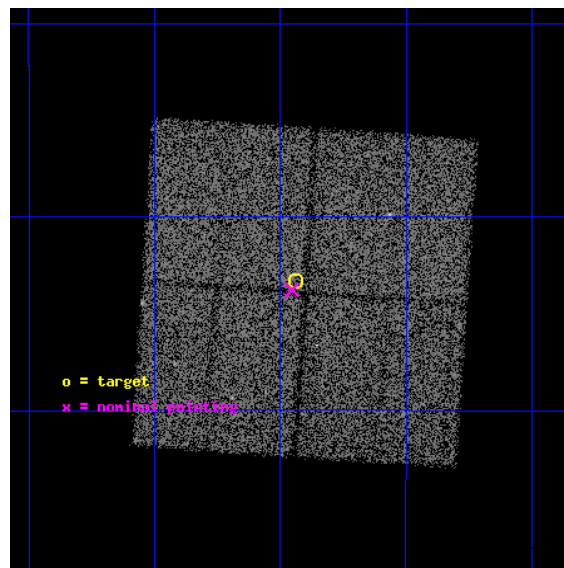
L2 Processing Date : Apr 29 2012

## Contents

<b>1</b>	<b>Front</b>	<b>2</b>
<b>2</b>	<b>OBI</b>	<b>3</b>
2.1	OBI . . . . .	3
2.1.1	Images . . . . .	3
2.1.2	Bias . . . . .	3
2.1.3	Parameters . . . . .	4
2.1.4	Events . . . . .	4
2.2	Compared Parameters . . . . .	5
2.3	Aspect . . . . .	6
2.4	Star Slots . . . . .	9
2.4.1	Slot 3 . . . . .	9
2.4.2	Slot 4 . . . . .	10
2.4.3	Slot 5 . . . . .	11
2.4.4	Slot 6 . . . . .	12
2.4.5	Slot 7 . . . . .	13
2.5	FID Slots . . . . .	14
2.5.1	Slot 0 . . . . .	14
2.5.2	Slot 1 . . . . .	15
2.5.3	Slot 2 . . . . .	16
<b>A</b>	<b>Summary</b>	<b>17</b>
A.1	Status . . . . .	17
A.2	Comments . . . . .	17

# 1 Front

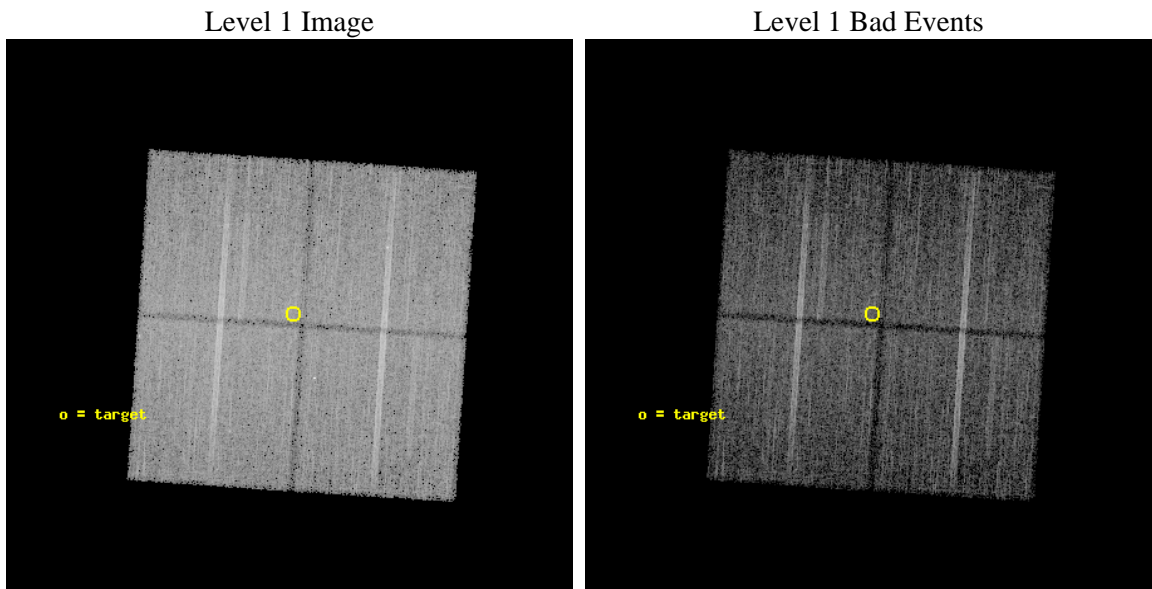
seq_num	600645	Sequence number
obs_id	8209	Observation id
title	Galactic Bulge Latitude Survey-2	Proposal title
observer	Professor Johnathan Grindlay	Principal investigator
object	GBW30	Source name
dtcycle	0	&#160
cycle	P	events from which exps? Prim/Second/Both
ra_targ	265.985417	Observer's specified target RA [deg]
dec_targ	-28.722111	Observer's specified target Dec [deg]
ra_nom	265.98877065641	Nominal RA [deg]
dec_nom	-28.729654859318	Nominal Dec [deg]
roll_nom	273.8102803526	Nominal Roll [deg]
revision	2	Processing version of data
ontime	14694.00011301	Sum of GTIs [s]
livetime	14502.012183968	Livetime [s]
ontime0	14690.859122813	Sum of GTIs [s]
ontime1	14687.718172371	Sum of GTIs [s]
ontime2	14694.00011301	Sum of GTIs [s]
ontime3	14694.00011301	Sum of GTIs [s]
l2events	68143	Number of level 2 events



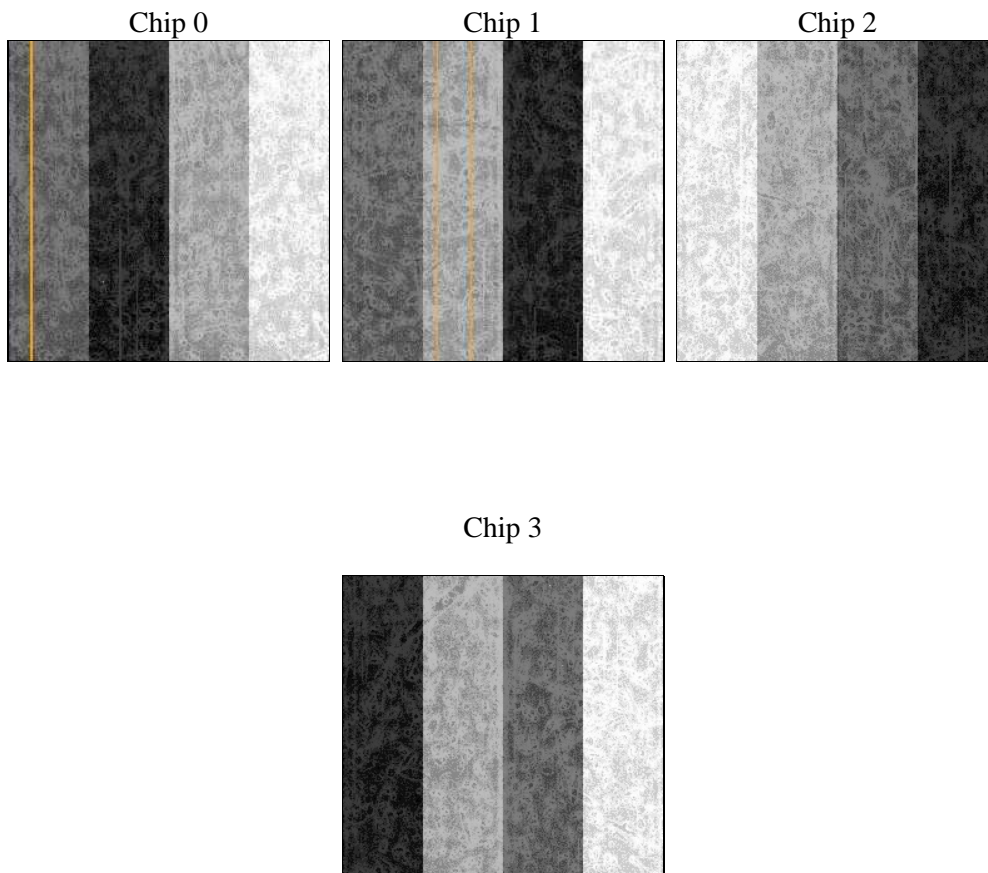
## 2 OBI

### 2.1 OBI

#### 2.1.1 Images



#### 2.1.2 Bias



### 2.1.3 Parameters

obi_num	0	Obi number	sched_exp_time	14900.000000	[s] Scheduled observation exposure time
ascdsver	8.4.4	Processing system revision	ontime	14694.00011301	Sum of GTIs [s]
caldsver	4.4.9	&#160	ontime0	14690.859122813	Sum of GTIs [s]
date	2012-04-29T02:18:53	Date and time of file creation	ontime1	14687.718172371	Sum of GTIs [s]
revision	2	Processing version of data	ontime2	14694.00011301	Sum of GTIs [s]
			ontime3	14694.00011301	Sum of GTIs [s]
			l1events	549691	Number of level 1 events

### 2.1.4 Events

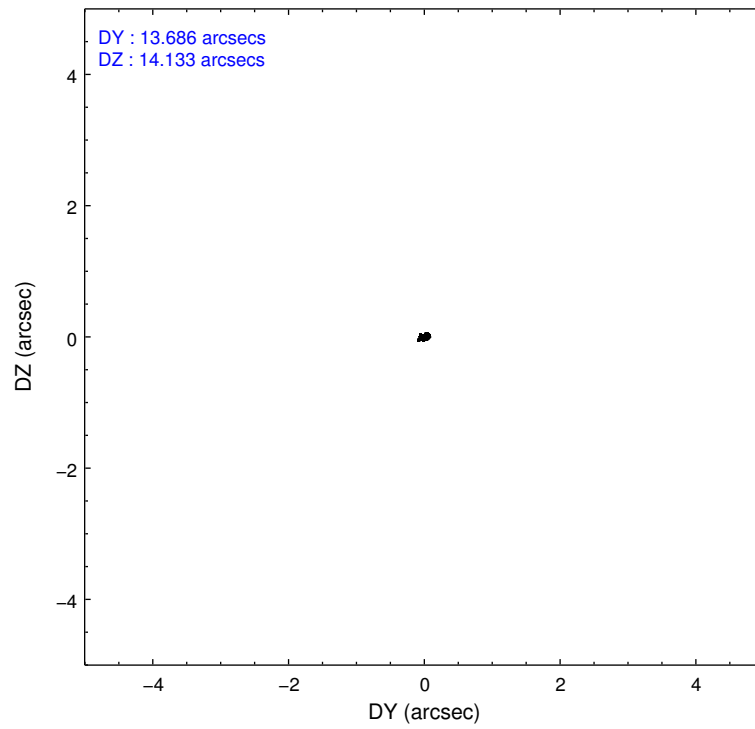
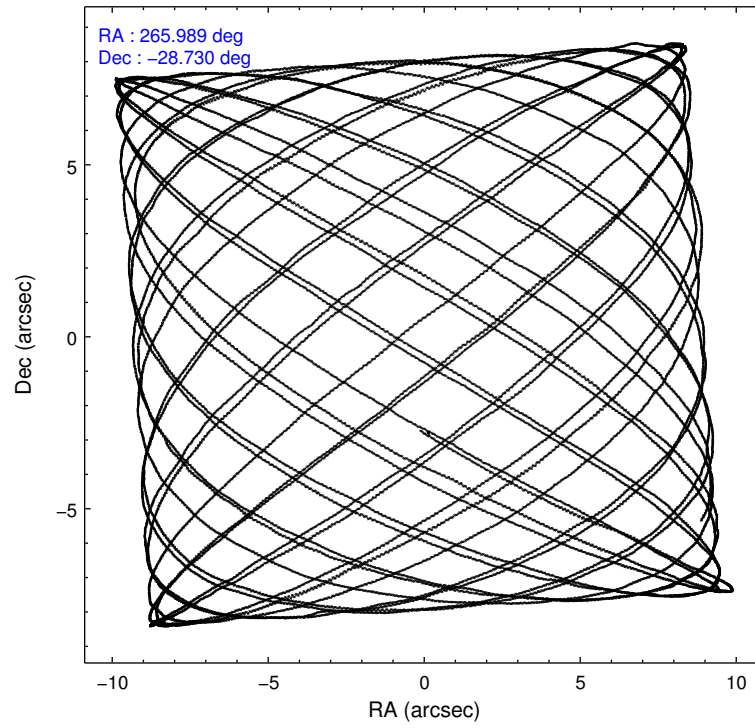
	ccd 0	ccd 1	ccd 2	ccd 3
level 1 events	130603	134432	142434	142222
rejected events	111763	113587	122595	123024
rejected %	85%	84%	86%	86%

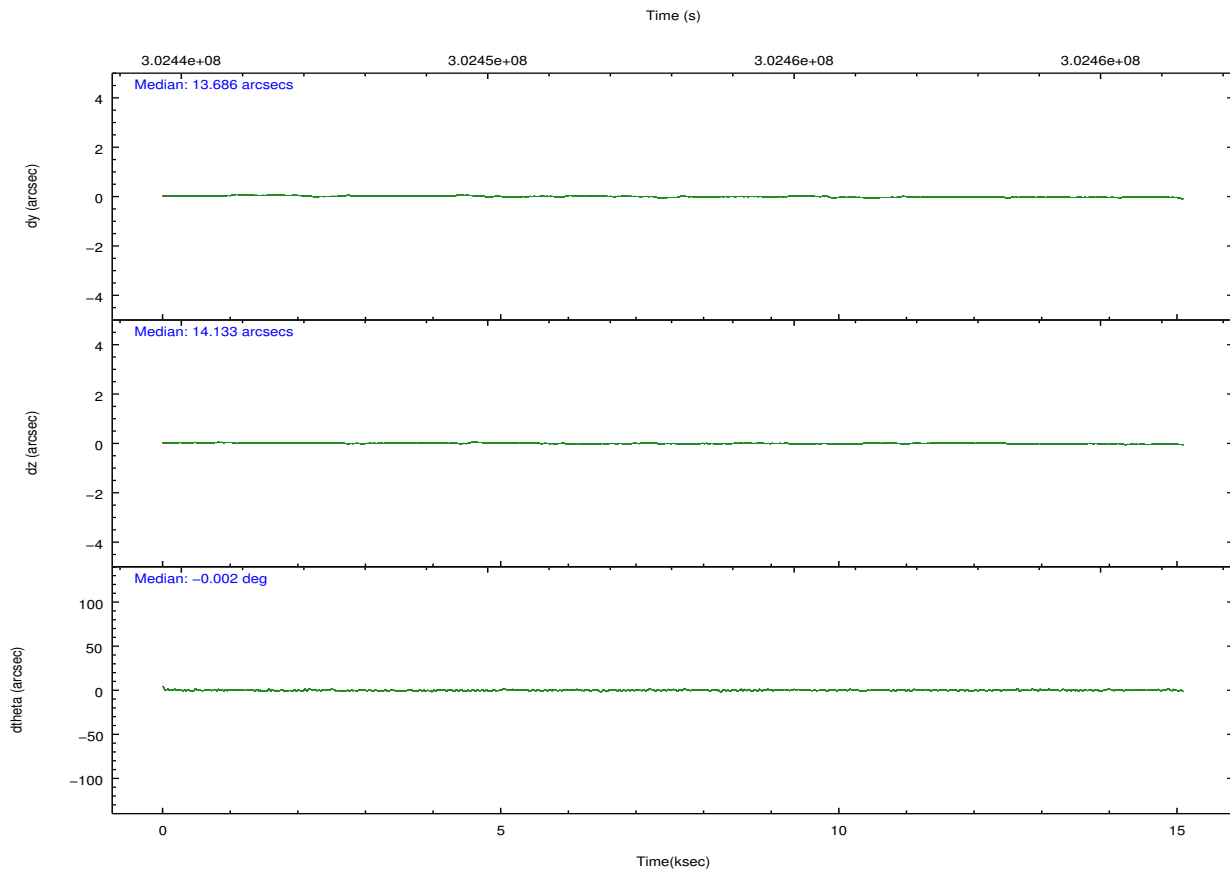
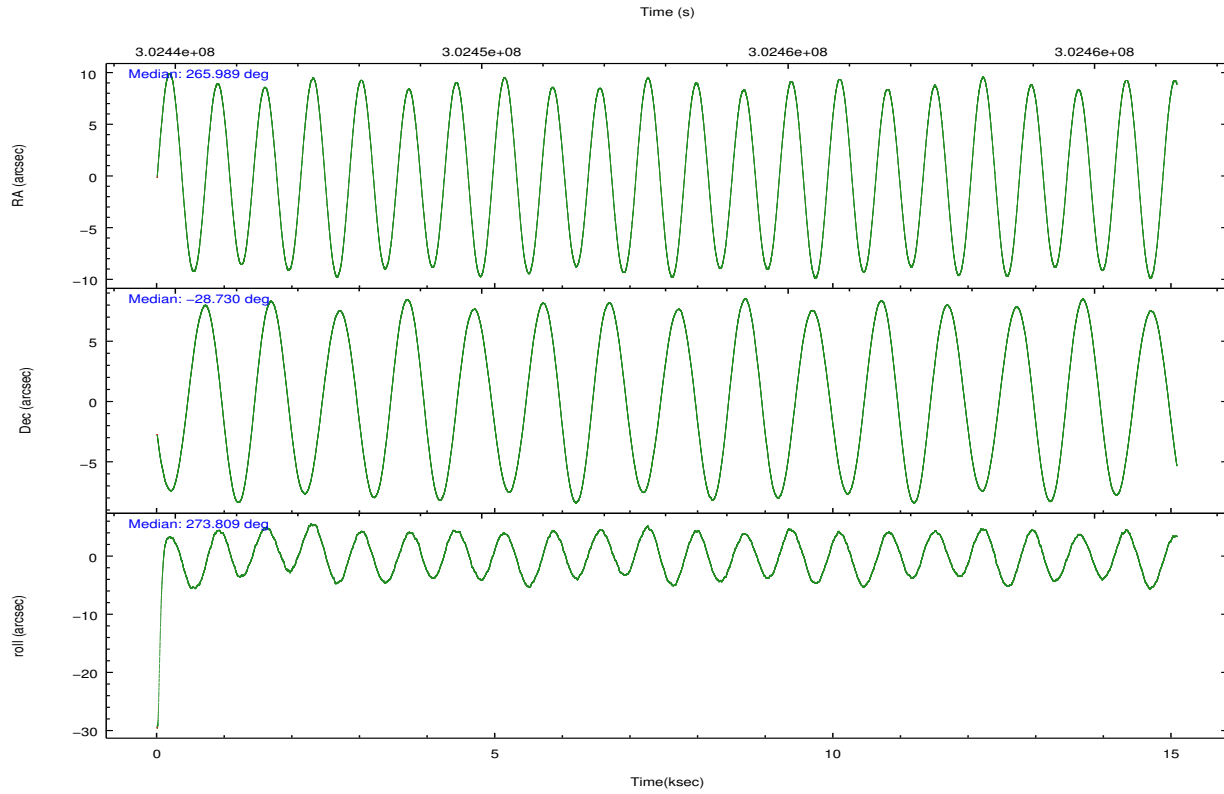
	ccd 0	ccd 1	ccd 2	ccd 3
grade 0 events	8634	8948	9468	9006
	6%	6%	6%	6%
grade 1 events	103	60	120	98
	0%	0%	0%	0%
grade 2 events	3954	4582	3971	3623
	3%	3%	2%	2%
grade 3 events	1724	1864	1708	1732
	1%	1%	1%	1%
grade 4 events	1633	1766	1814	1728
	1%	1%	1%	1%
grade 5 events	5538	6226	5420	6607
	4%	4%	3%	4%
grade 6 events	2895	3693	2885	3114
	2%	2%	2%	2%
grade 7 events	106122	107293	117048	116314
	81%	79%	82%	81%

## 2.2 Compared Parameters

Parameter	Planned	Actual	Parameter	Planned	Actual
Instrument	ACIS	ACIS	Obspar format version number	7	7
Detector	ACIS-0123	ACIS-0123	Obspar file type	PREDICTED	ACTUAL
Grating	NONE	NONE	Obspar update status	NONE	UPDATED
Data mode	VFAINT	VFAINT	Number of optional ACIS chips dropped	0	0
Observation mode	POINTING	POINTING	On-chip summing requested	N	N
[deg] Pointing RA	265.971186	265.9887706564081	Subarray requested	NONE	NONE
[deg] Pointing Dec	-28.706874	-28.72965485931807	Alternating exposures requested	N	N
[deg] Pointing Roll	273.593167	273.8102803526014	[s] Primary exposure time	0.000000	3.1
[mm] SIM focus pos	-0.782348	-0.7809083437167272			
[mm] SIM defocus	0	0.001439871863259334			
[mm] SIM translation stage pos	-233.592463	-233.5874344608287			
[mm] SIM translation stage offset	0	-0.005018542100998502			
[s] Observation start time (MET)	302445660.184000	302445284.29698			
Observation start date	2007-08-02T12:39:55	2007-08-02T12:34:44			
[s] Observation end time (MET)	302460560.184000	302460694.14772			
Observation end date	2007-08-02T16:48:15	2007-08-02T16:51:34			
Read mode	TIMED	TIMED			

## 2.3 Aspect



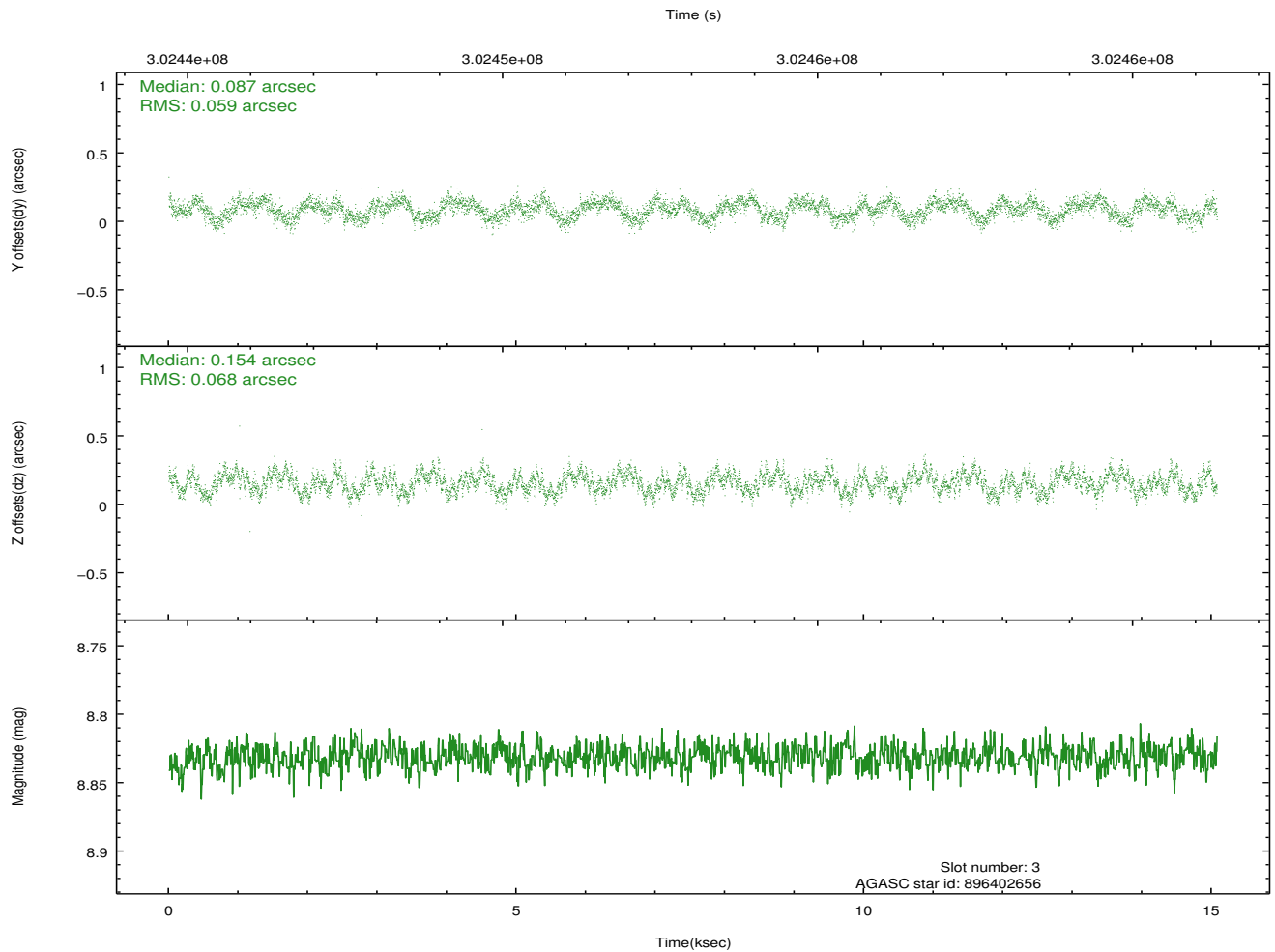
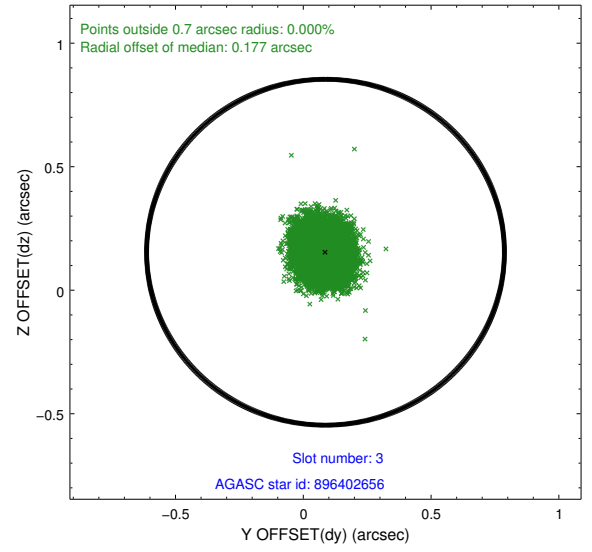
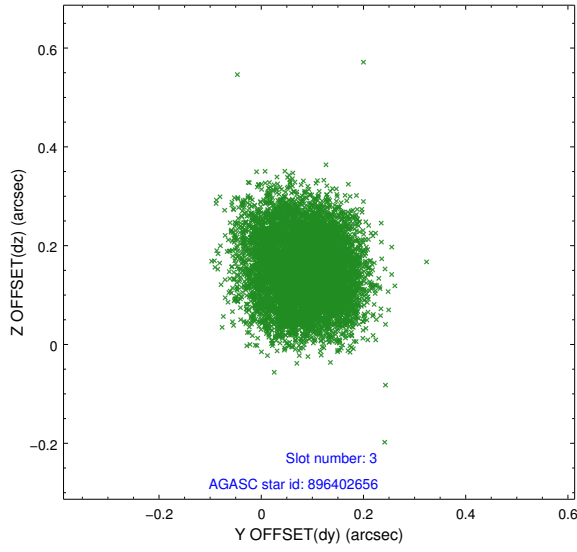


### Slot Statistics

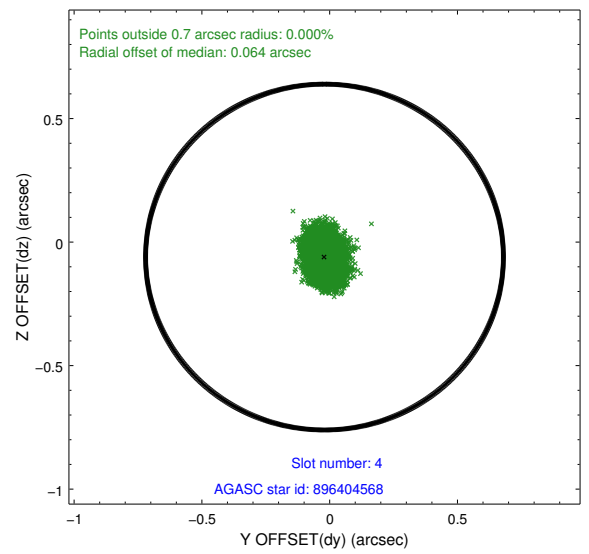
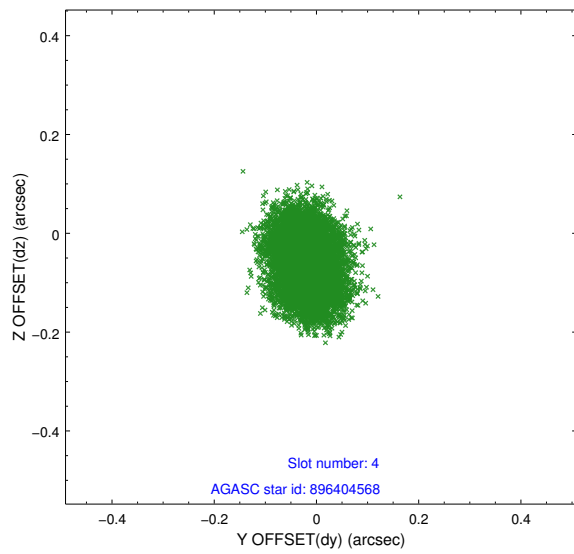
slot	status	id	mag	n_pts	med_dy	med_dz	dr1	dr2	ra	dec	mean_y	mean_z
0	FID	ACIS-I-1	7.23	3678	-0.009	0.033	0.008	0.014	0.000000	0.000000	925.80	-837.68
1	FID	ACIS-I-4	7.15	3676	0.207	0.005	0.007	0.012	0.000000	0.000000	2146.23	1061.94
2	FID	ACIS-I-5	7.22	3678	-0.296	0.032	0.006	0.012	0.000000	0.000000	-1822.09	1060.19
3	GUIDE	896402656	8.83	7352	0.087	0.154	0.098	0.149	265.739192	-28.230753	-1755.74	-626.92
4	GUIDE	896404568	7.88	7356	-0.020	-0.061	0.074	0.114	265.687293	-28.431080	-1046.17	-835.00
5	GUIDE	896540808	7.51	7357	0.004	0.019	0.046	0.073	265.985401	-29.308604	2164.87	-91.24
6	GUIDE	896538696	6.78	7357	-0.128	-0.089	0.059	0.086	266.298470	-28.325572	-1303.22	1120.95
7	GUIDE	896534128	8.68	7353	0.057	-0.025	0.076	0.121	266.503837	-29.080853	1452.55	1588.12

## 2.4 Star Slots

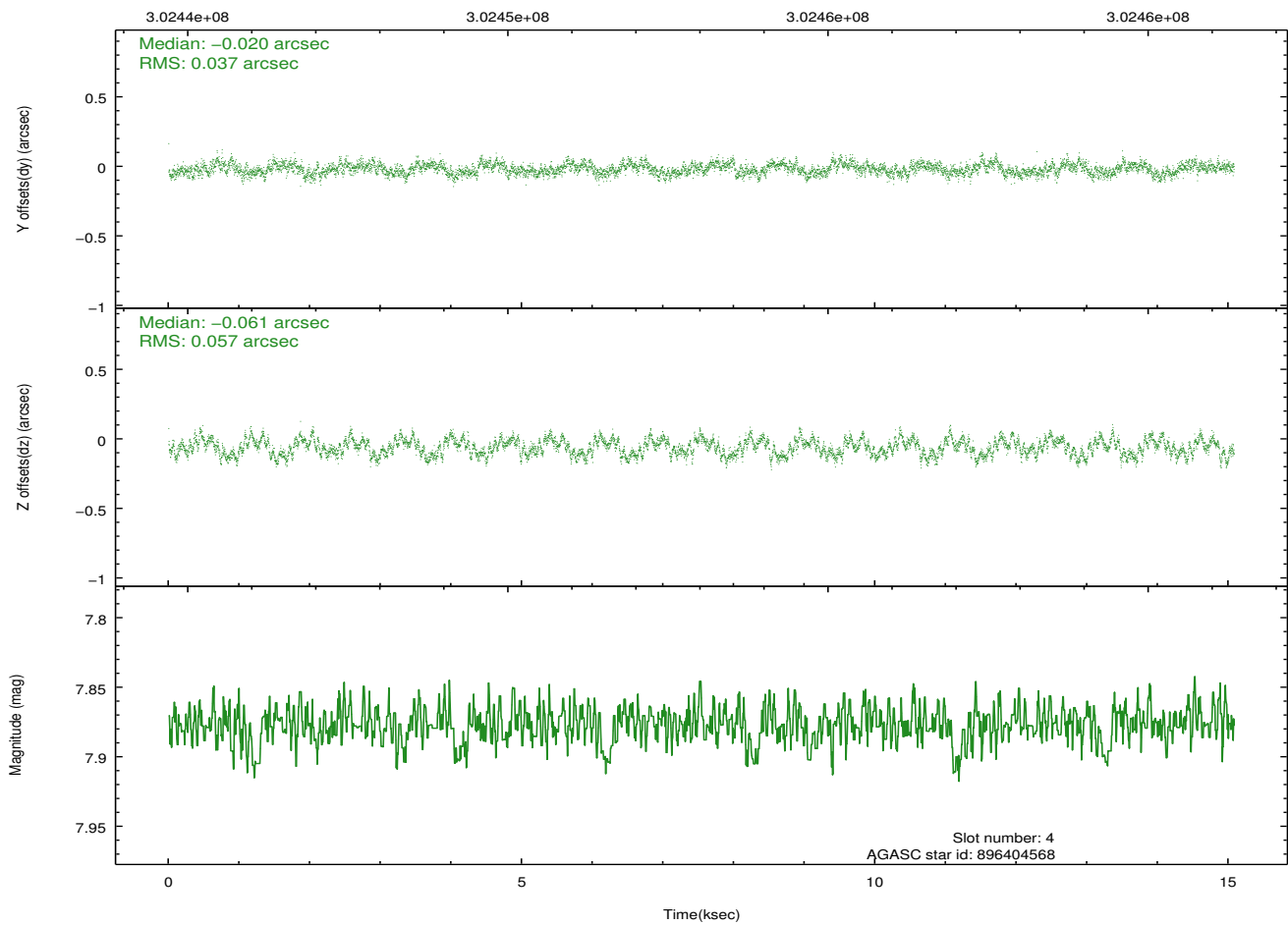
### 2.4.1 Slot 3



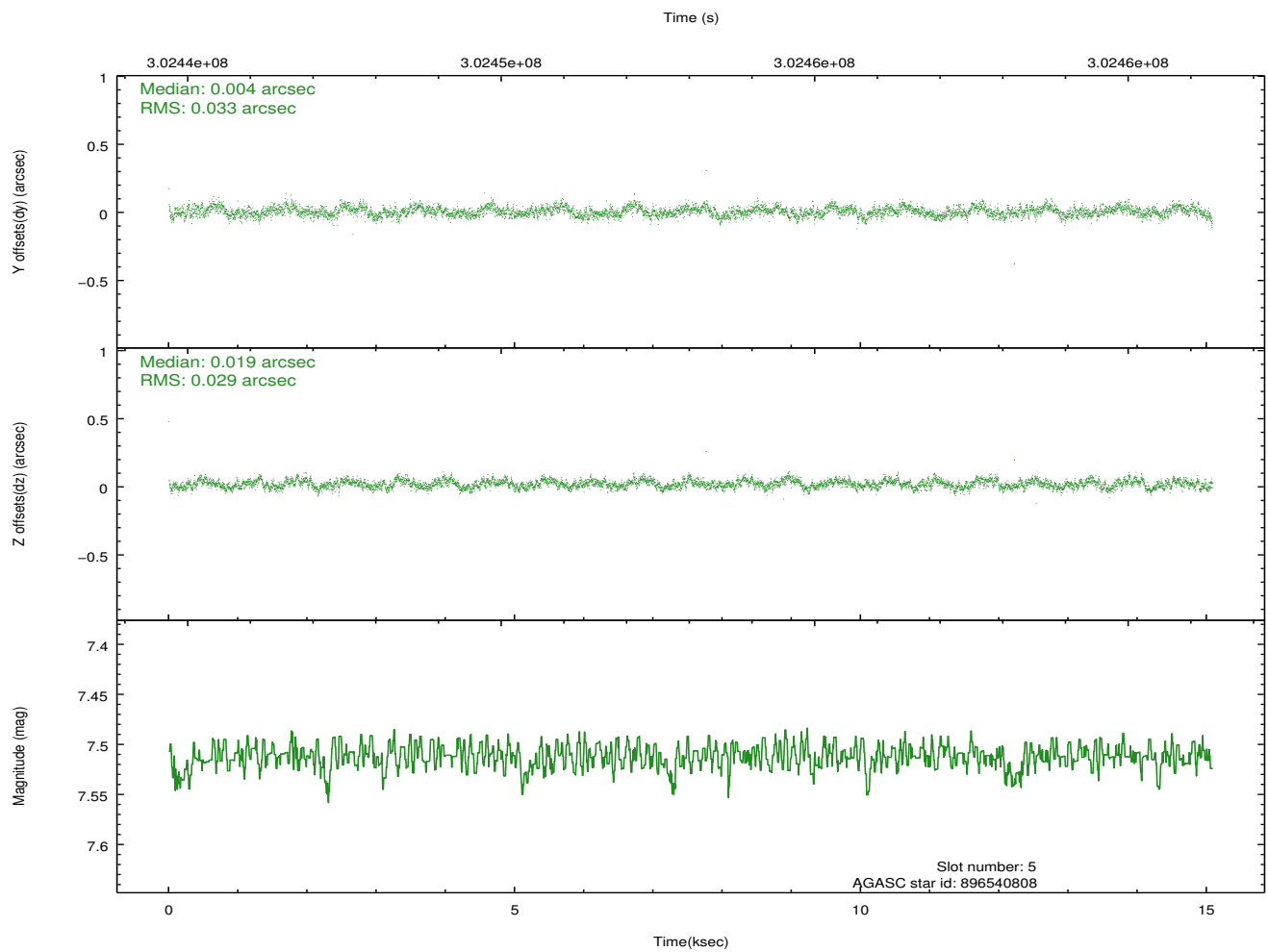
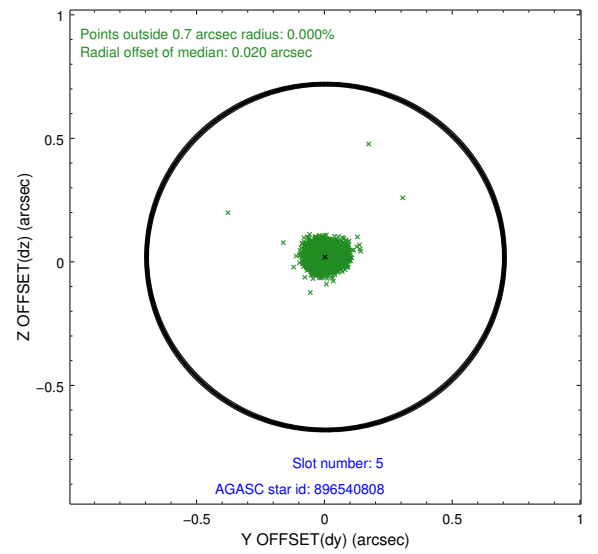
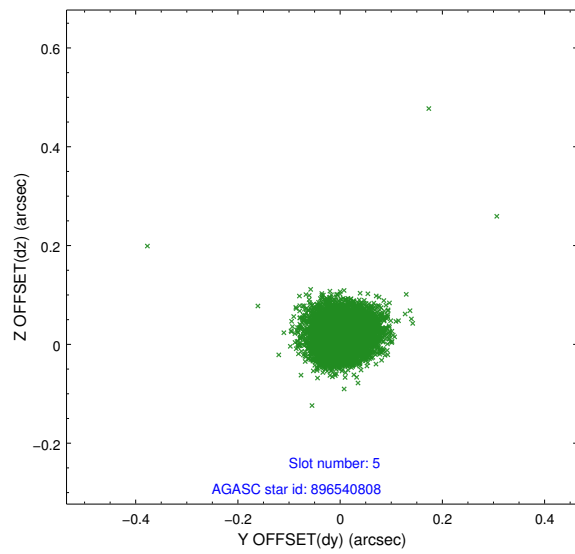
## 2.4.2 Slot 4



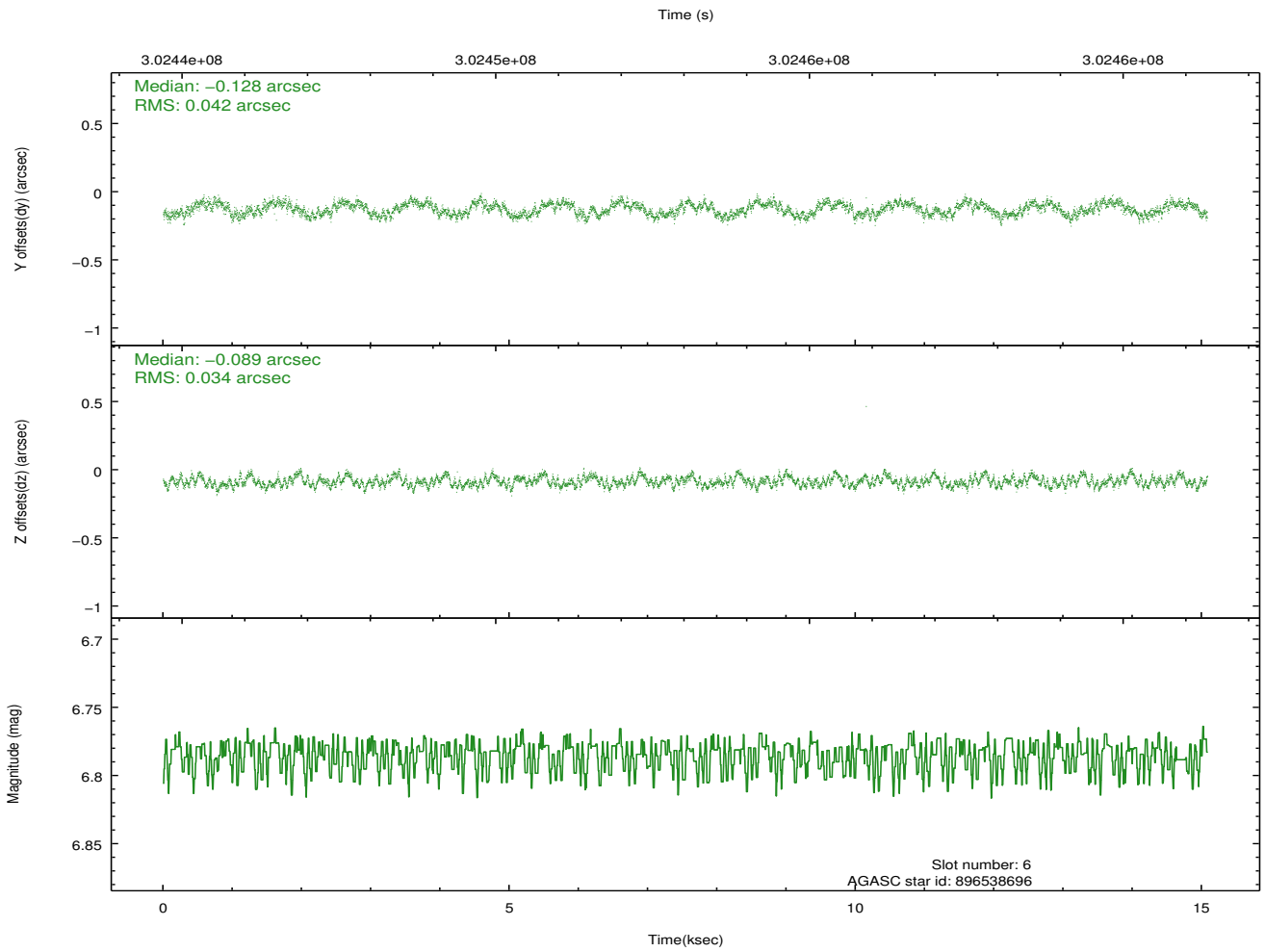
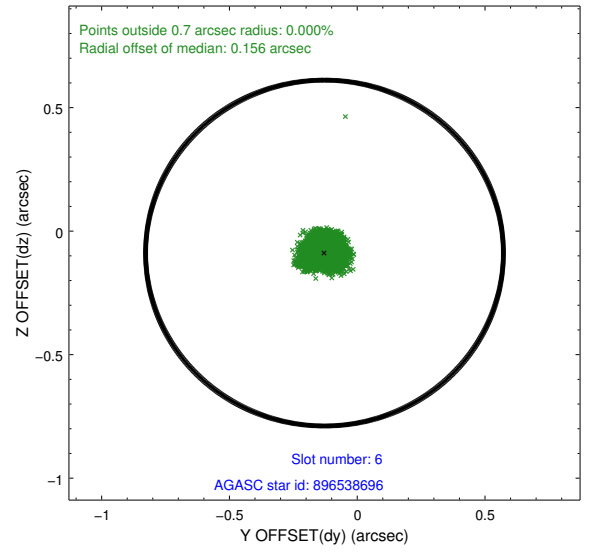
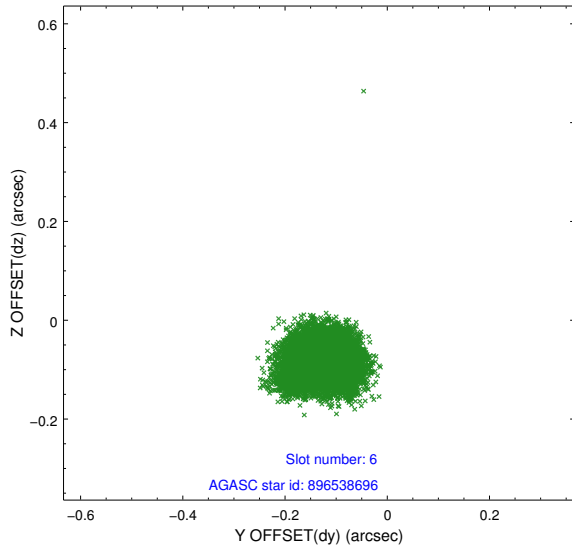
Time (s)



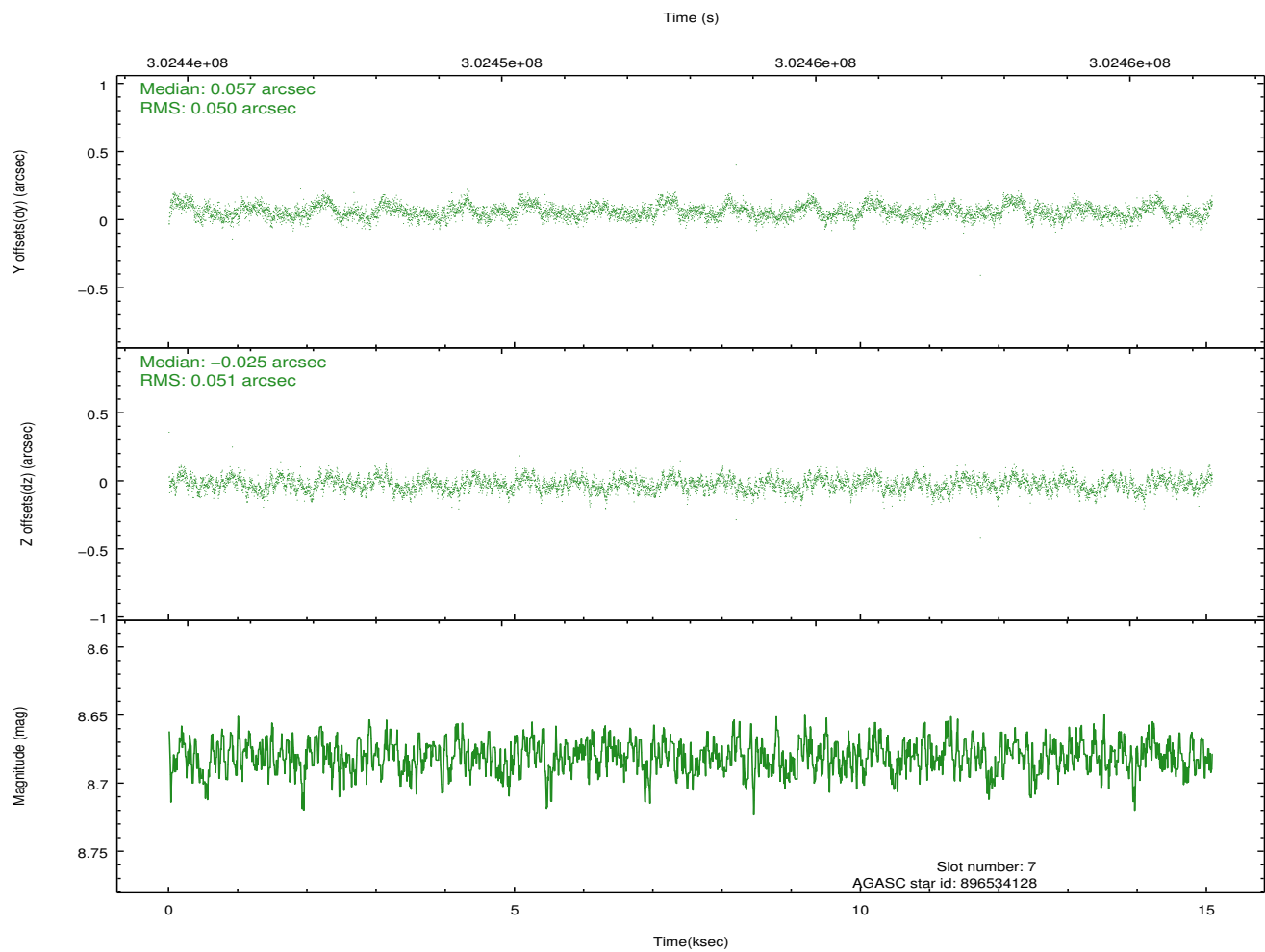
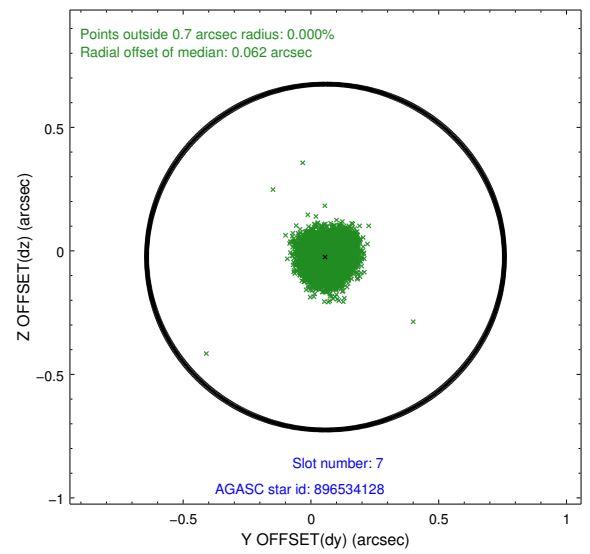
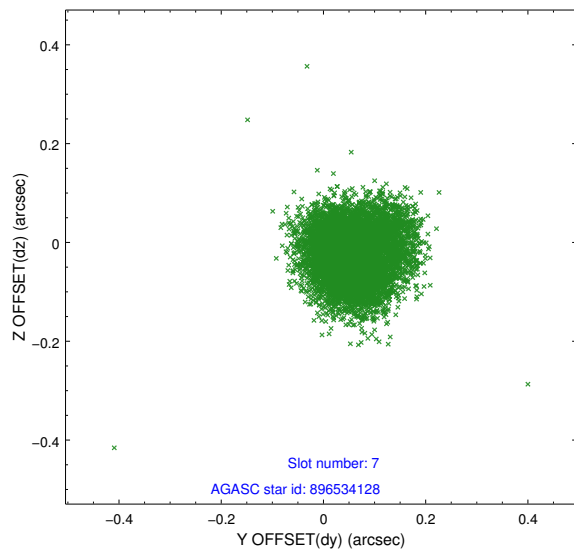
### 2.4.3 Slot 5



### 2.4.4 Slot 6

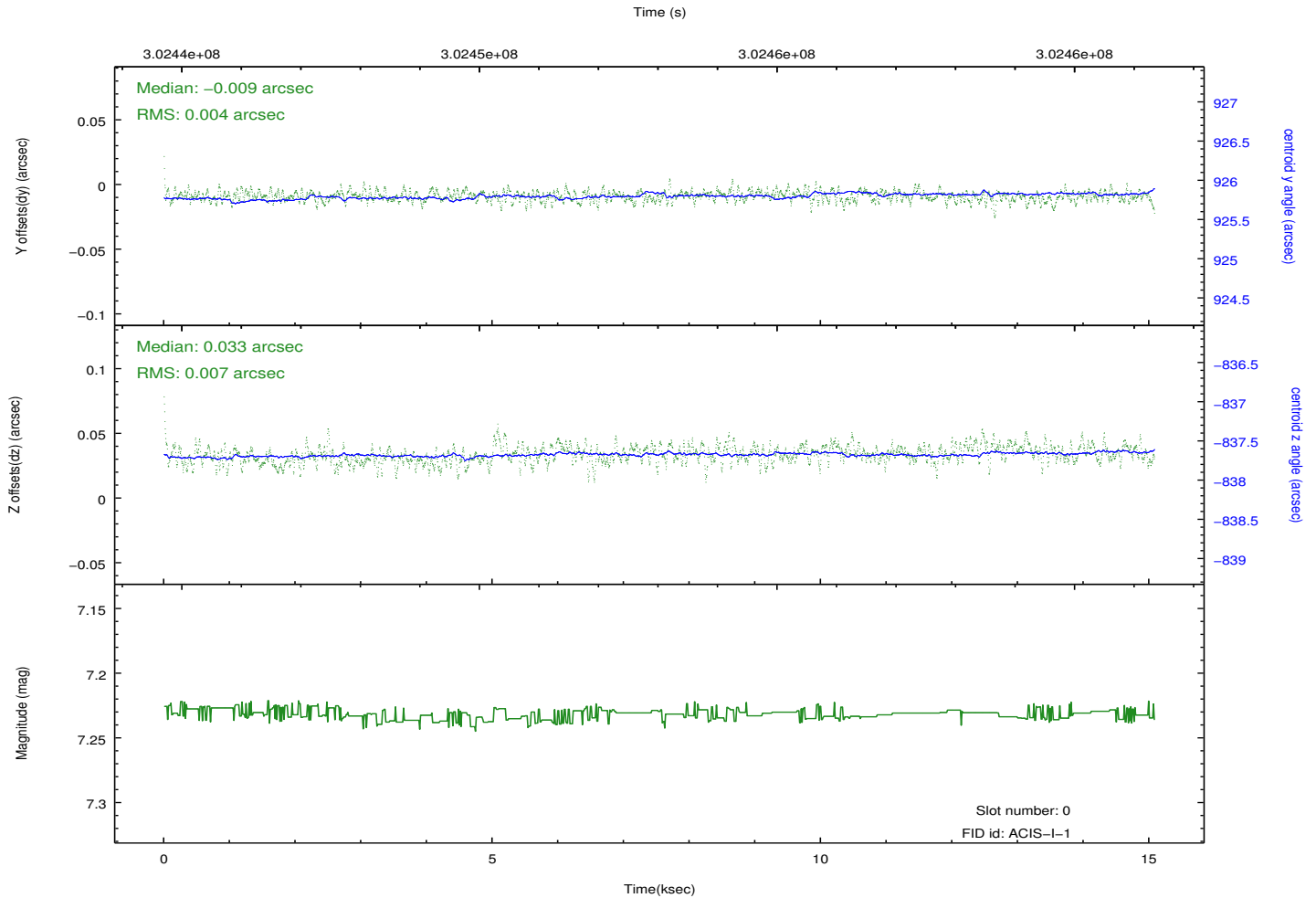
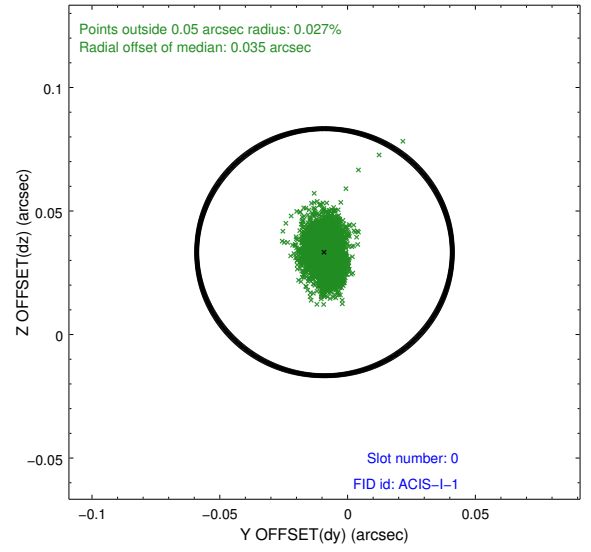
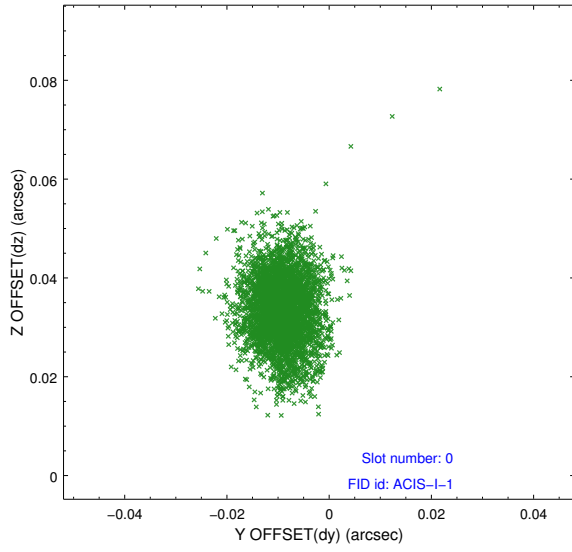


## 2.4.5 Slot 7

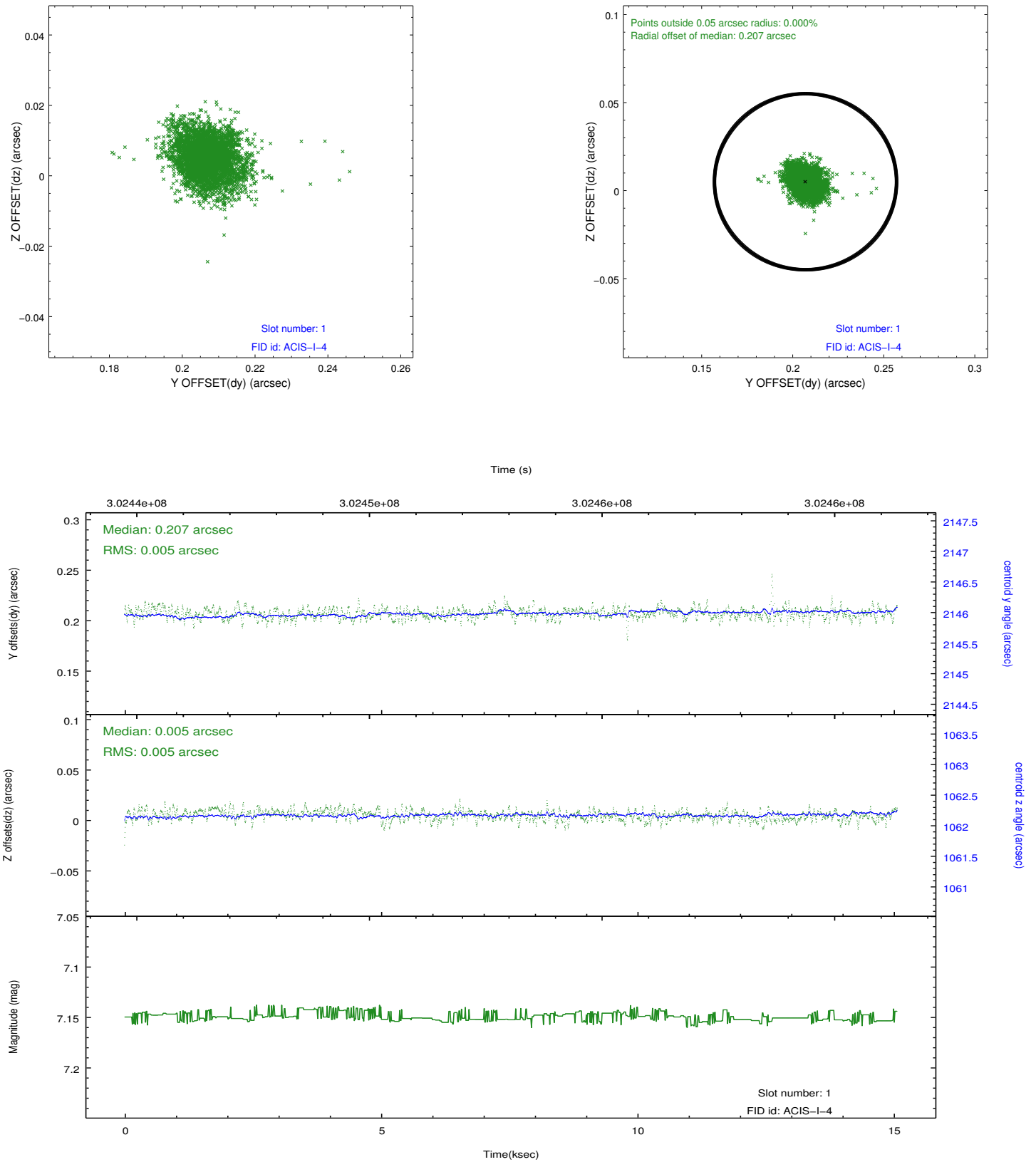


## 2.5 FID Slots

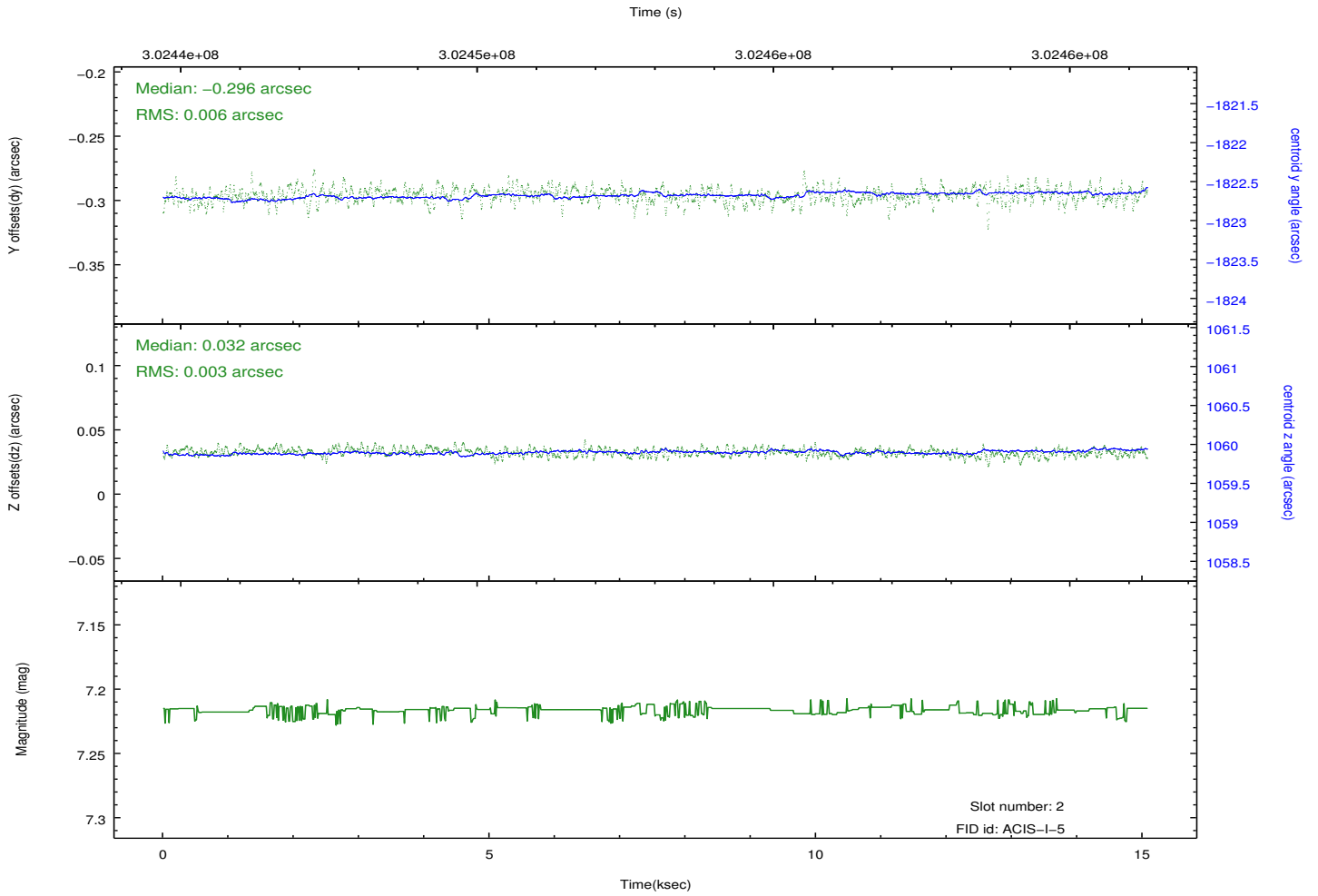
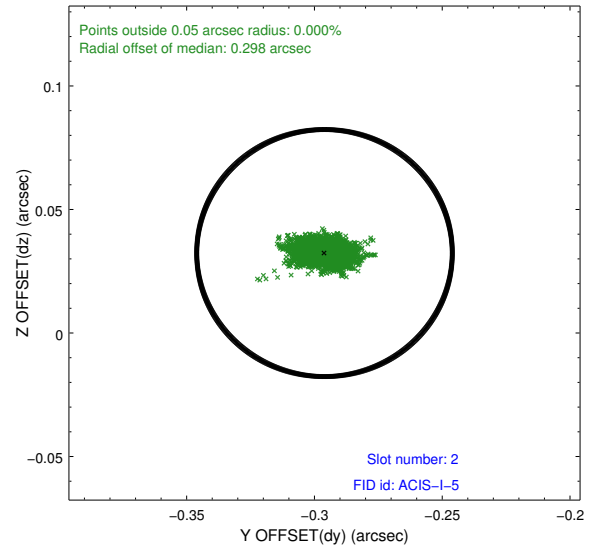
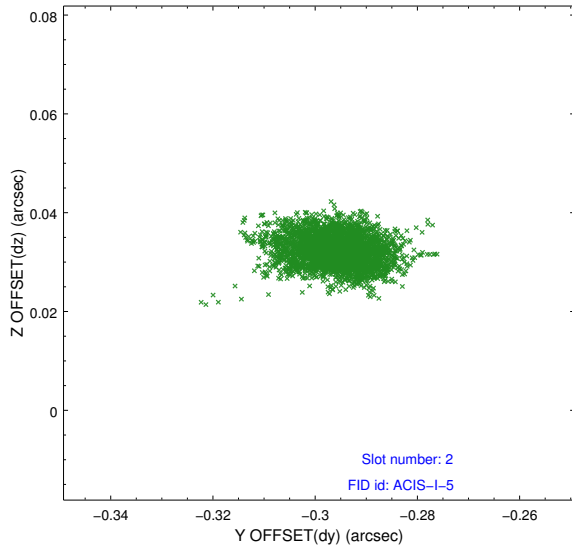
### 2.5.1 Slot 0



## 2.5.2 Slot 1



### 2.5.3 Slot 2



# A Summary

## A.1 Status

V&V Scientist	Jen Lauer
V&V Date (YYYY-MM-DD)	2012.05.01
V&V Edition	1
V&V Disposition and Status	OK
V&V Charge Time	14.6940001

## A.2 Comments

Roll angle constraint of 95 +/- 10 degrees met.