

# V&V Reference Report

## L2 ASCDS Version : 8.4.5

Observation 849 - L2 Version 6  
Chandra X-Ray Center

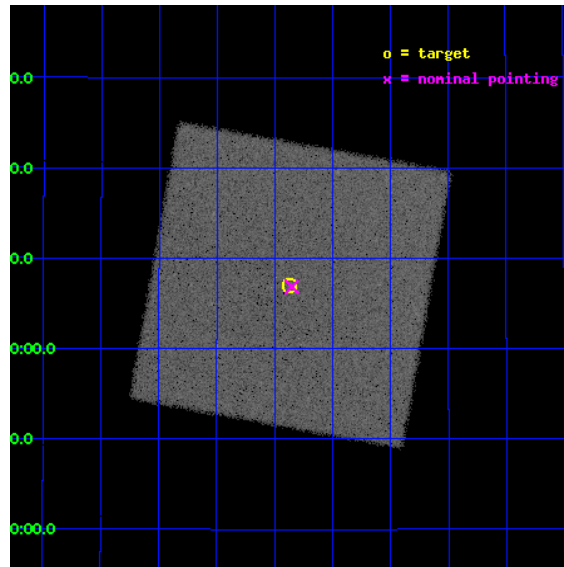
L2 Processing Date : Aug 28 2012

## Contents

<b>1</b>	<b>Front</b>	<b>2</b>
<b>2</b>	<b>OBI</b>	<b>3</b>
2.1	OBI . . . . .	3
2.1.1	Images . . . . .	3
2.1.2	Parameters . . . . .	4
2.1.3	Events . . . . .	4
2.2	Compared Parameters . . . . .	5
2.3	Aspect . . . . .	6
2.4	Star Slots . . . . .	9
2.4.1	Slot 3 . . . . .	9
2.4.2	Slot 4 . . . . .	10
2.4.3	Slot 5 . . . . .	11
2.4.4	Slot 6 . . . . .	12
2.4.5	Slot 7 . . . . .	13
2.5	FID Slots . . . . .	14
2.5.1	Slot 0 . . . . .	14
2.5.2	Slot 1 . . . . .	15
2.5.3	Slot 2 . . . . .	16
<b>A</b>	<b>Summary</b>	<b>17</b>
A.1	Status . . . . .	17
A.2	Comments . . . . .	17

# 1 Front

seq_num	700154	Sequence number
obs_id	849	Observation id
title	DO BL LAC OBJECTS WEAR X-RAY HALOS?	Proposal title
observer	Dr. Sally Laurent-Muehleisen	Principal investigator
object	1217+301	Source name
ra_targ	184.467083	Observer's specified target RA [deg]
dec_targ	30.116833	Observer's specified target Dec [deg]
ra_nom	184.46269789313	Nominal RA [deg]
dec_nom	30.114318577526	Nominal Dec [deg]
roll_nom	235.23968922337	Nominal Roll [deg]
revision	6	Processing version of data
ontime	10004.256617874	[s]
livetime	9957.895100064	Ontime multiplied by DTCOR
l2events	228917	Number of level 2 events

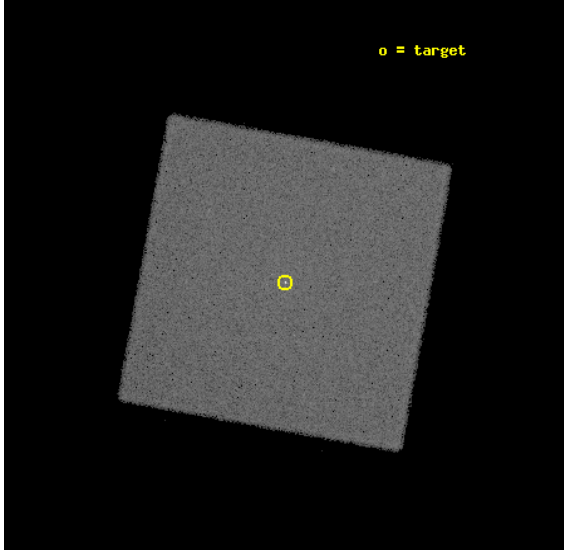


## 2 OBI

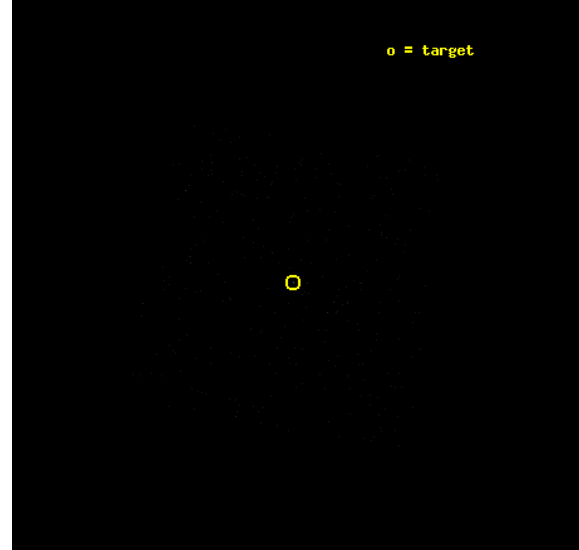
### 2.1 OBI

#### 2.1.1 Images

Level 1 Image



Level 1 Bad Events



### 2.1.2 Parameters

obi_num	0	Obi number	sched_exp_time	10000.000000	[s] Scheduled observation exposure time
ascdsver	8.4.5	Processing system revision	ontime	10004.256617874	[s]
caldsver	4.5.1.1	&#160	l1events	349438	Number of level 1 events
date	2012-08-28T10:13:40	Date and time of file creation			
revision	6	Processing version of data			

### 2.1.3 Events

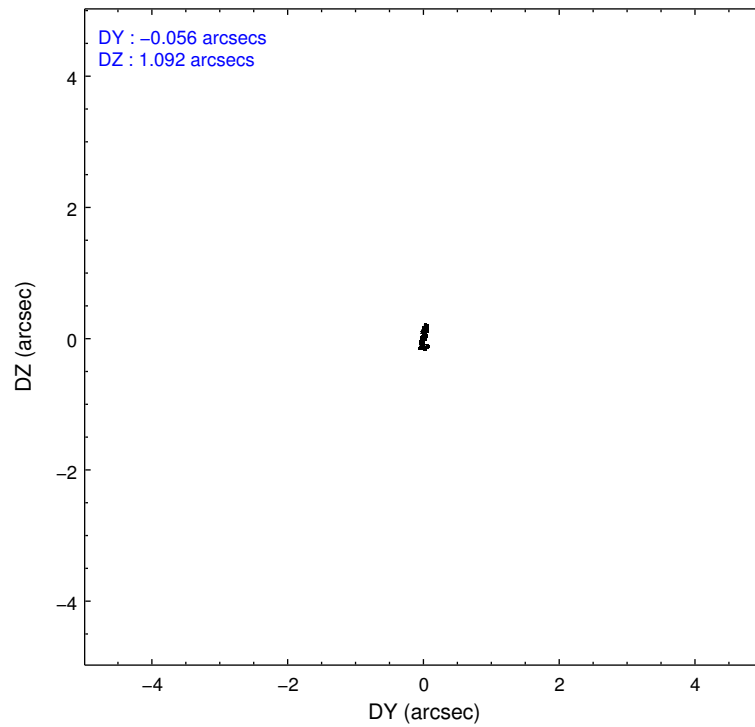
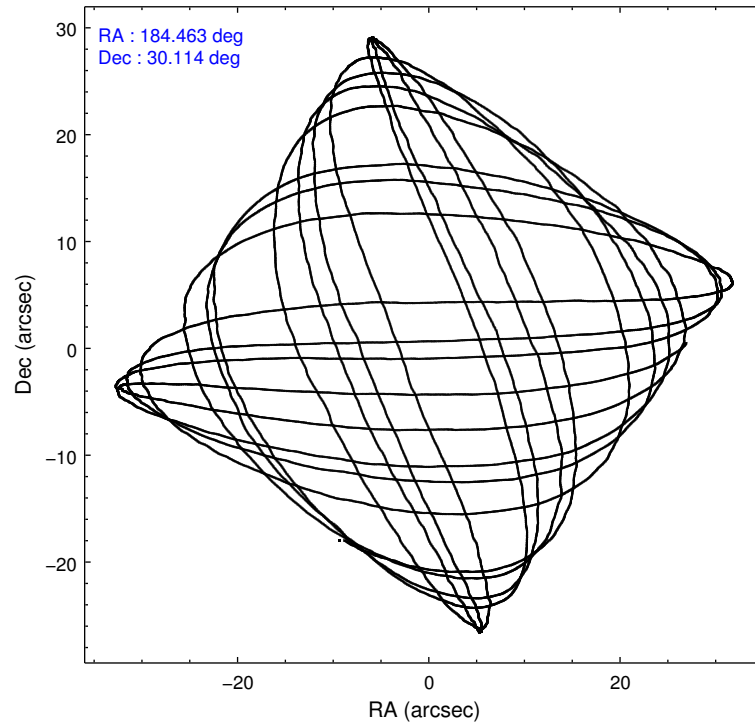
#### Level 1 Events

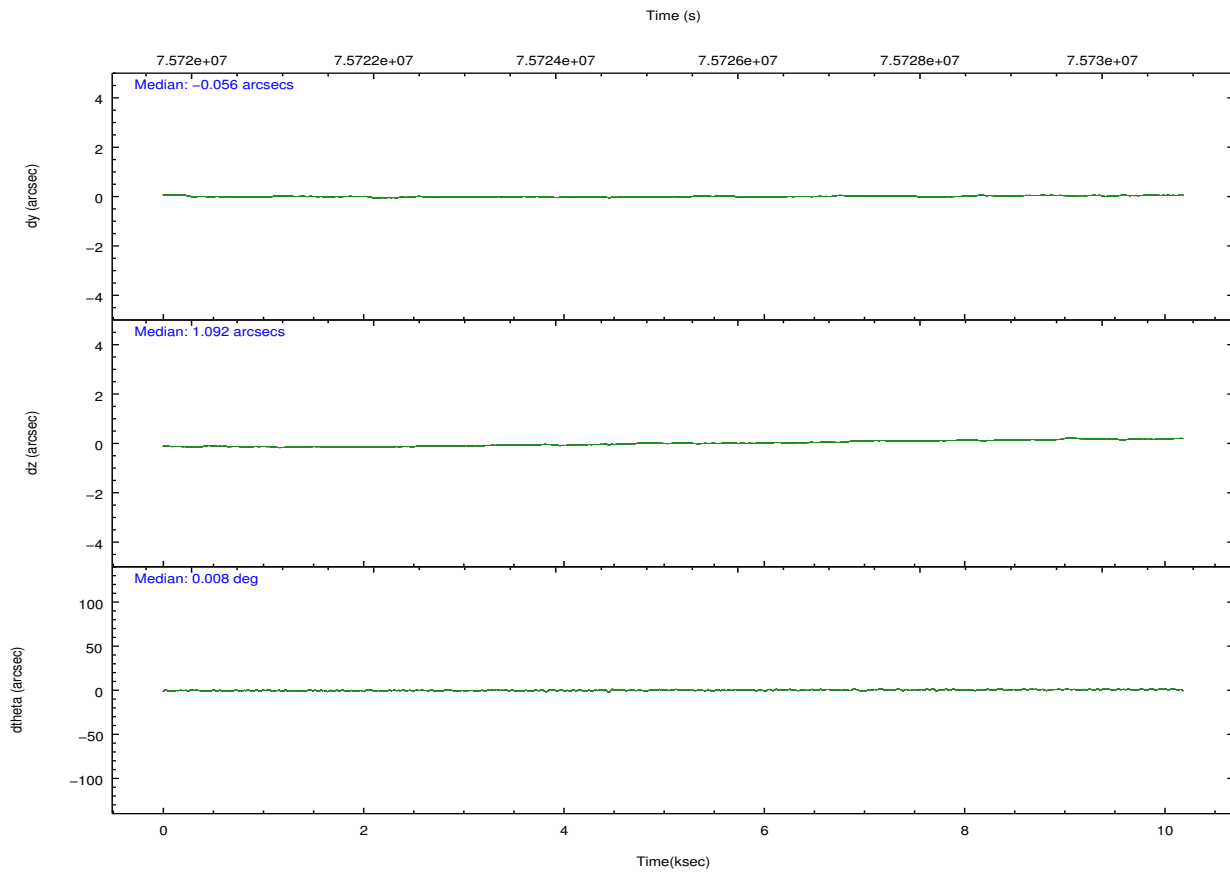
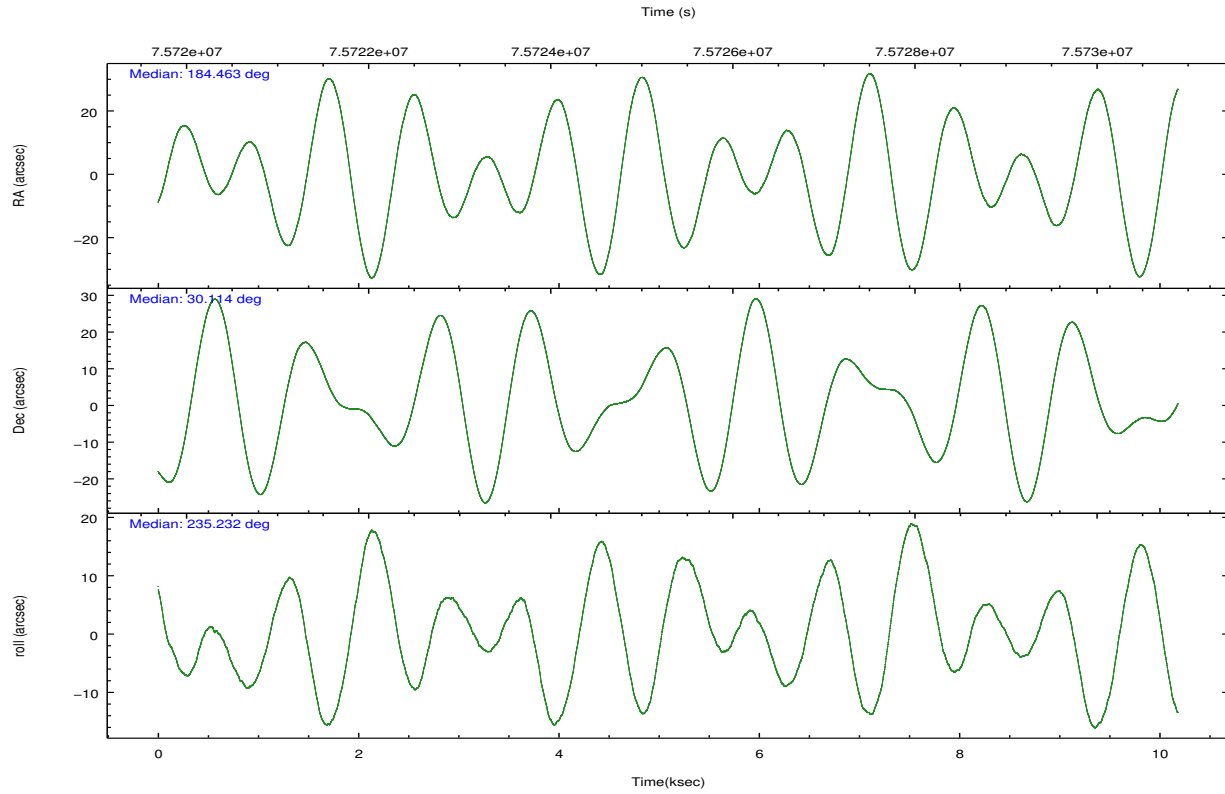
	<b>segment 0</b>
level 1 events	349438
rejected events	5370
rejected %	1%

## 2.2 Compared Parameters

Parameter	Planned	Actual	Parameter	Planned	Actual
Instrument	HRC	HRC	Obspar format version number	7	7
Detector	HRC-I	HRC-I	Obspar file type	PREDICTED	ACTUAL
Grating	NONE	NONE	Obspar update status	NONE	UPDATED
Data mode	OBSERVING	OBSERVING			
Observation mode	POINTING	POINTING			
[deg] Pointing RA	184.464905	184.4626978931279			
[deg] Pointing Dec	30.141643	30.11431857752562			
[deg] Pointing Roll	235.334068	235.2396892233681			
[mm] SIM focus pos	-1.040293	-1.038866356238299			
[mm] SIM defocus	0	0.001426264420575141			
[mm] SIM translation stage pos	126.985494	126.9804656746847			
[mm] SIM translation stage offset	0	0.005023216916882234			
[s] Observation start time (MET)	75720379.184000	75719375.02639499			
Observation start date	2000-05-26T09:25:15	2000-05-26T09:09:35			
[s] Observation end time (MET)	75730379.184000	75731319.864334			
Observation end date	2000-05-26T12:11:55	2000-05-26T12:28:39			

## 2.3 Aspect



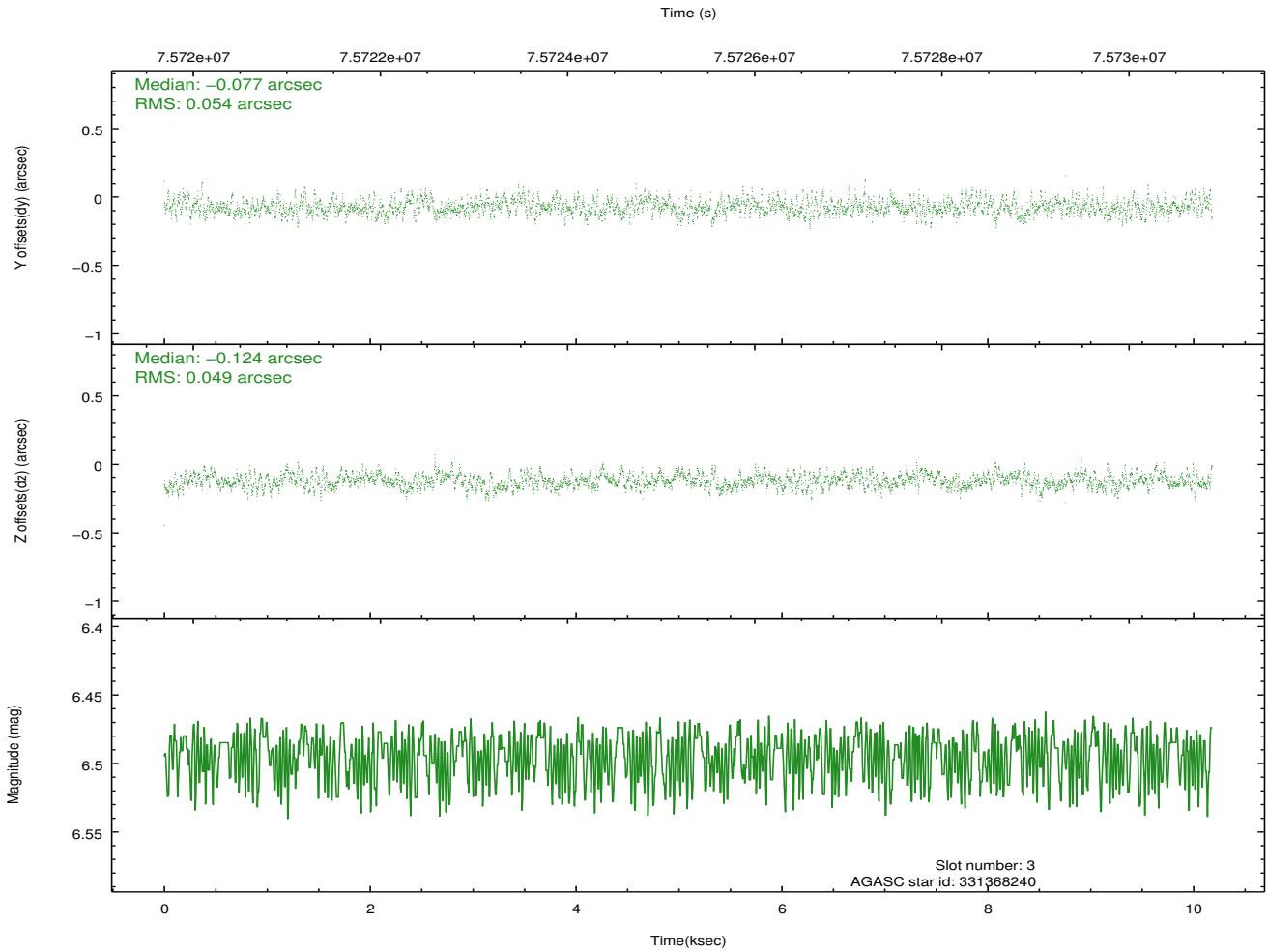
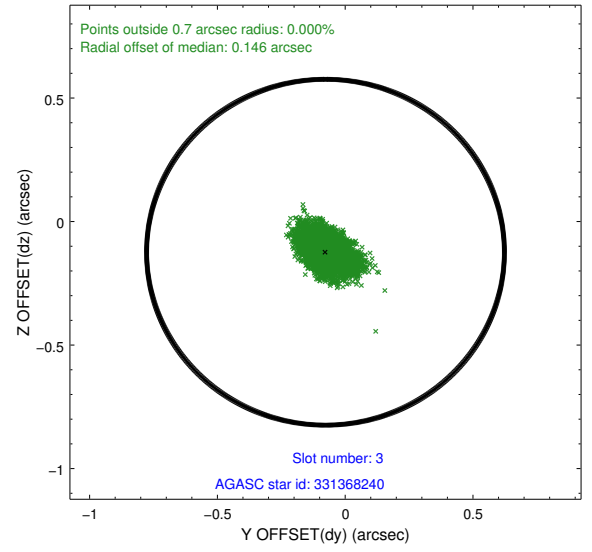
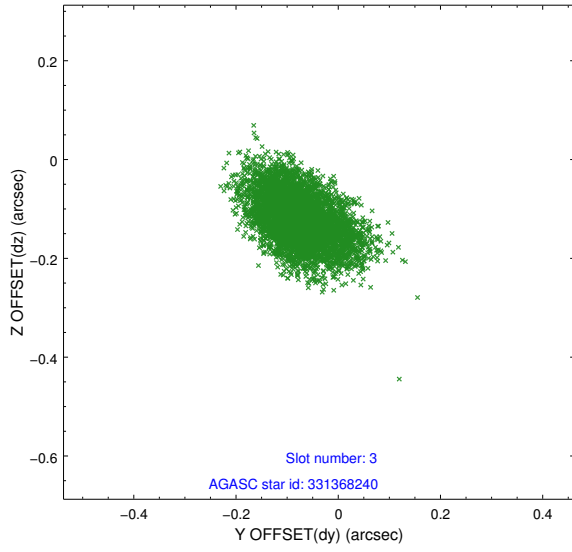


### Slot Statistics

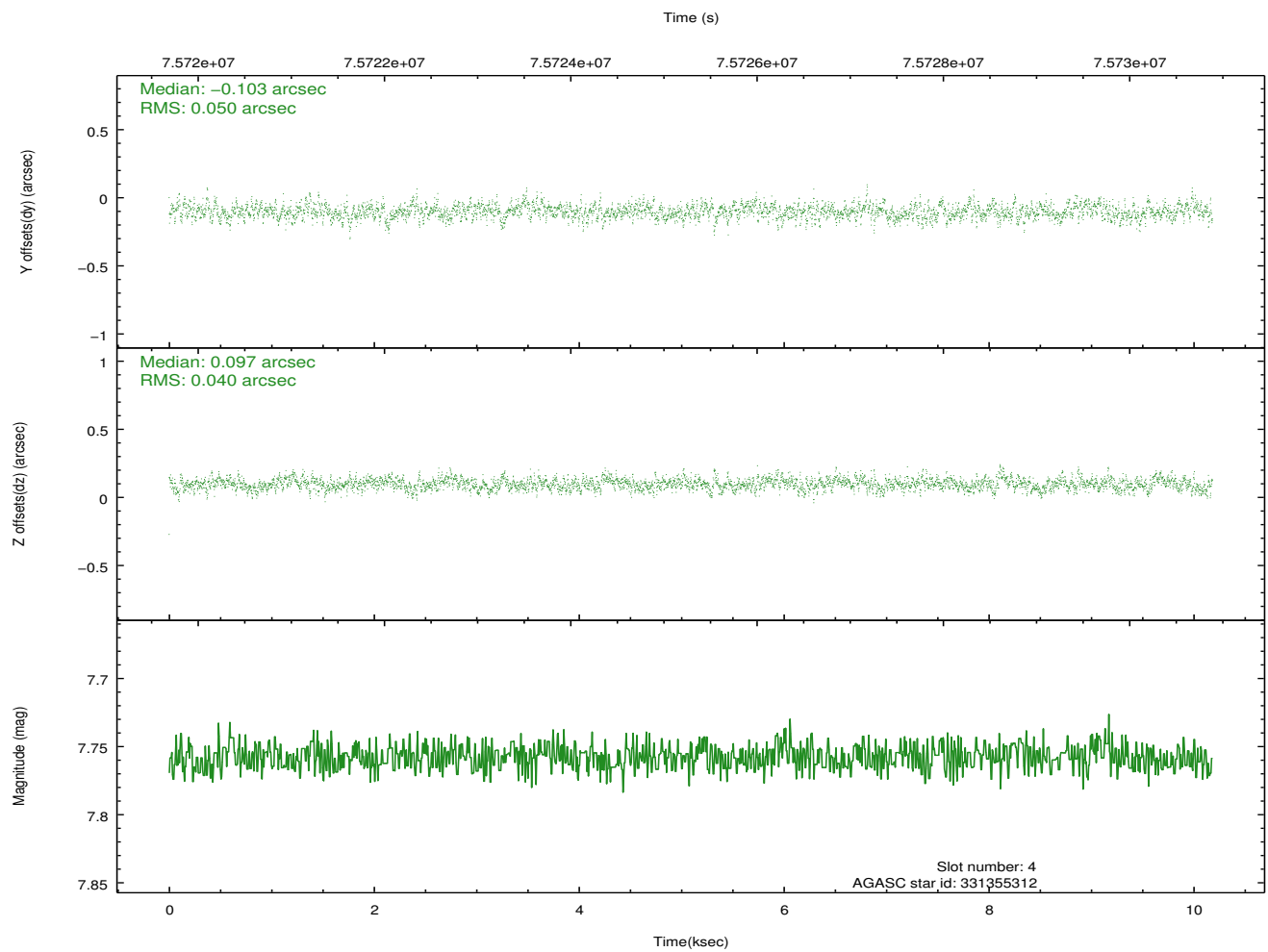
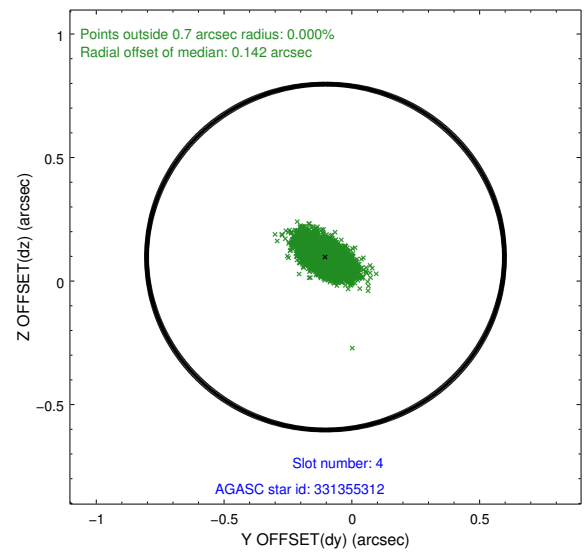
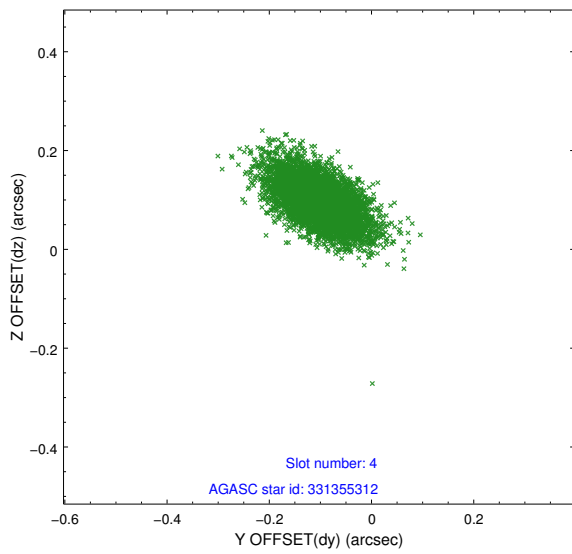
slot	status	id	mag	n_pts	med_dy	med_dz	dr1	dr2	ra	dec	mean_y	mean_z
0	FID	HRC-I-1	6.97	2484	0.028	-0.025	0.006	0.011	0.000000	0.000000	-755.30	-1288.75
1	FID	HRC-I-3	7.06	2484	0.032	-0.042	0.007	0.013	0.000000	0.000000	-1184.11	1015.27
2	FID	HRC-I-4	7.00	2484	0.054	-0.023	0.006	0.010	0.000000	0.000000	1287.02	1013.85
3	GUIDE	331368240	6.49	4968	-0.077	-0.124	0.077	0.127	184.631757	30.249046	-613.97	206.51
4	GUIDE	331355312	7.76	4968	-0.103	0.097	0.065	0.116	184.992302	30.486549	-1955.73	637.23
5	GUIDE	331221464	8.39	4967	0.046	-0.035	0.075	0.125	183.756088	30.141497	1249.43	-1818.33
6	GUIDE	331350544	8.70	4967	-0.045	0.178	0.082	0.138	184.879941	30.167953	-814.93	1006.98
7	GUIDE	331225624	10.18	4964	0.175	-0.118	0.143	0.250	183.689615	30.031477	1693.68	-1766.19

## 2.4 Star Slots

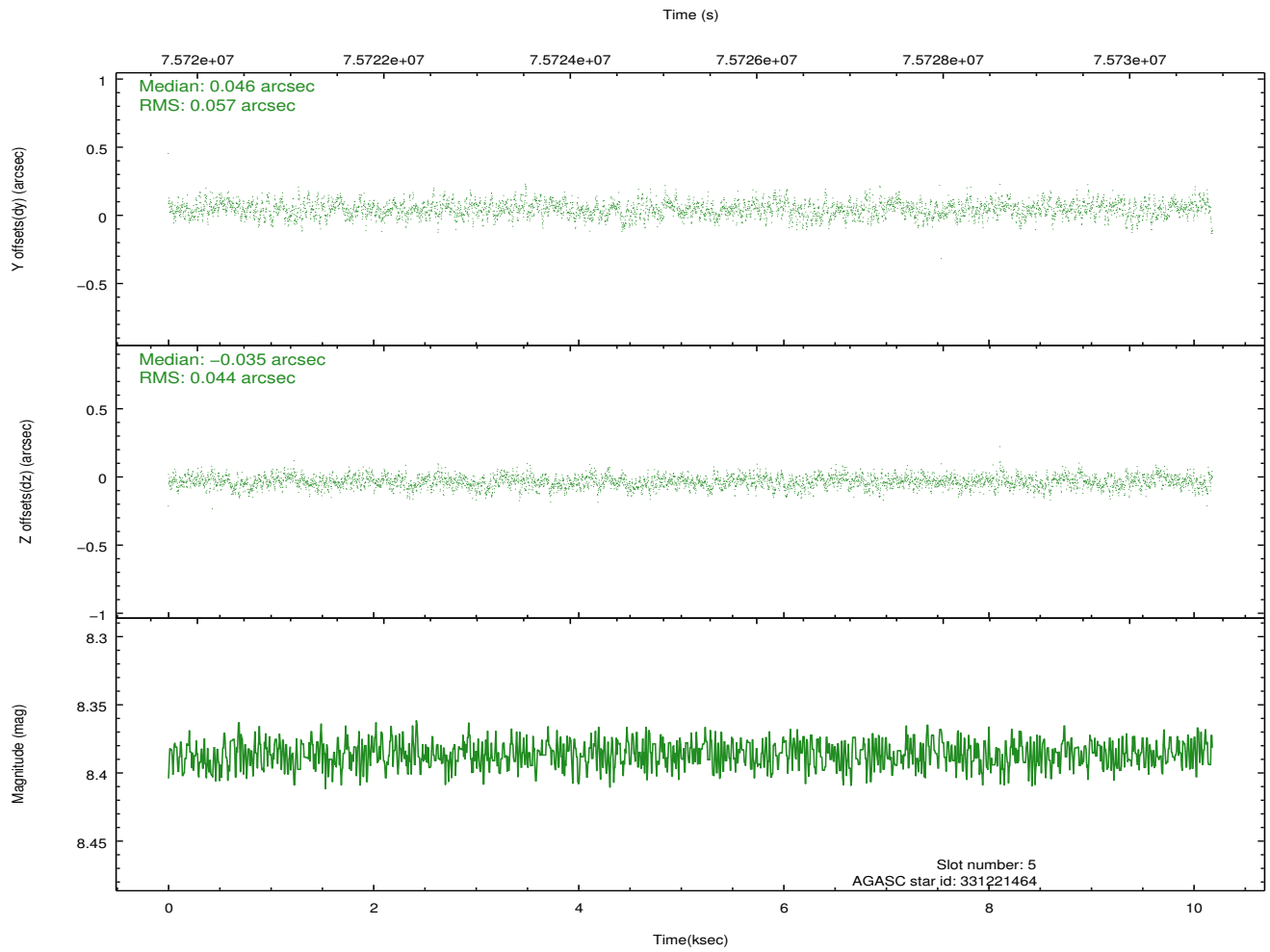
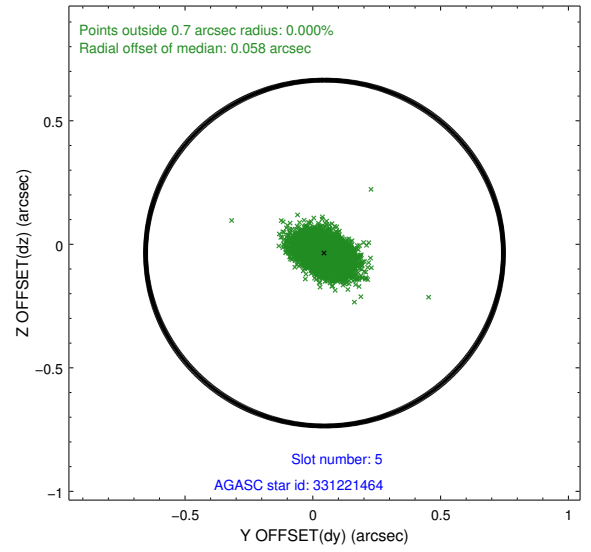
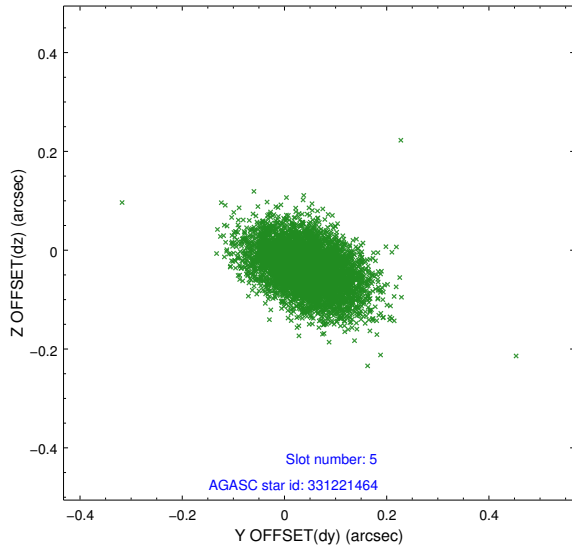
### 2.4.1 Slot 3



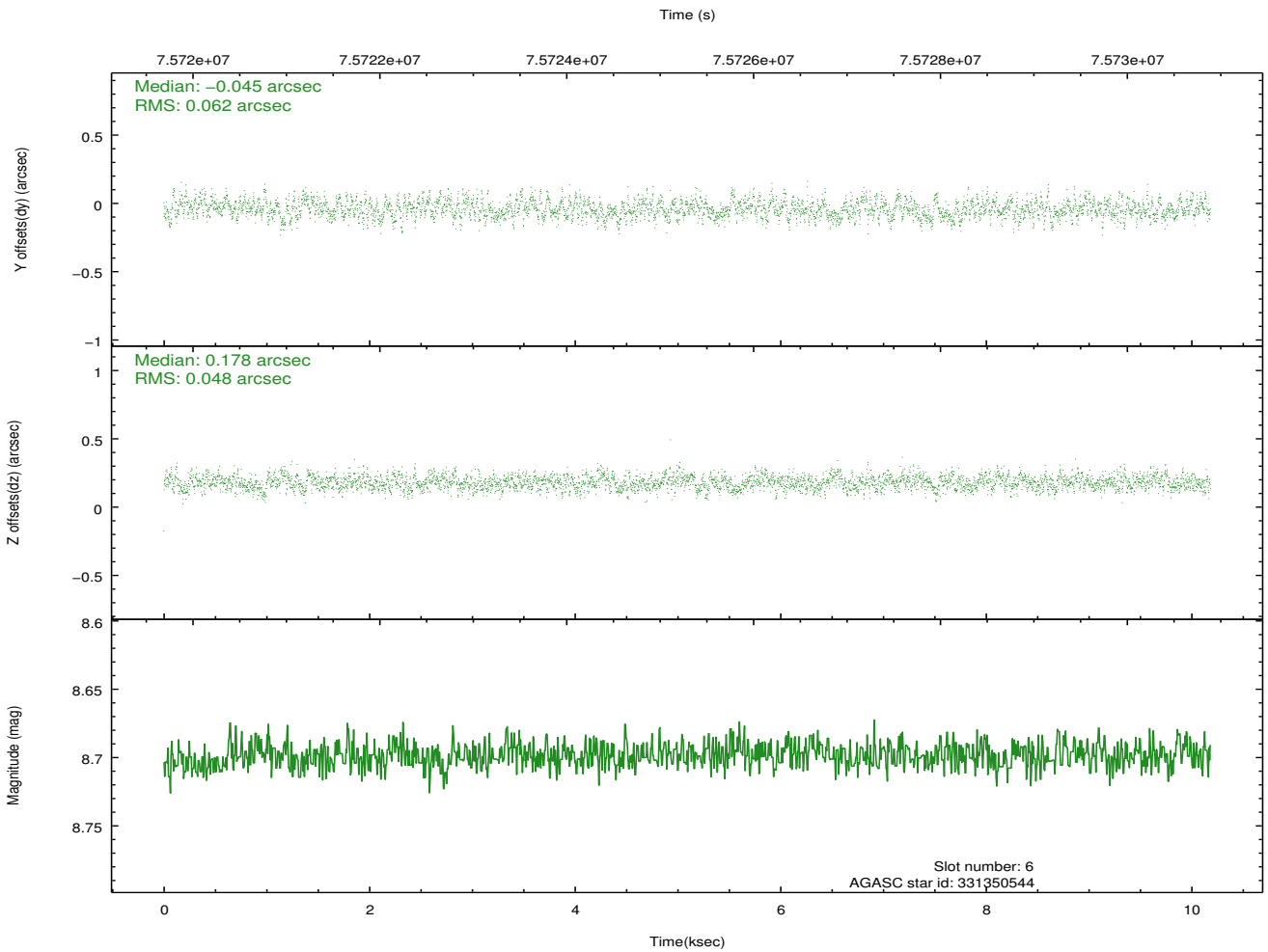
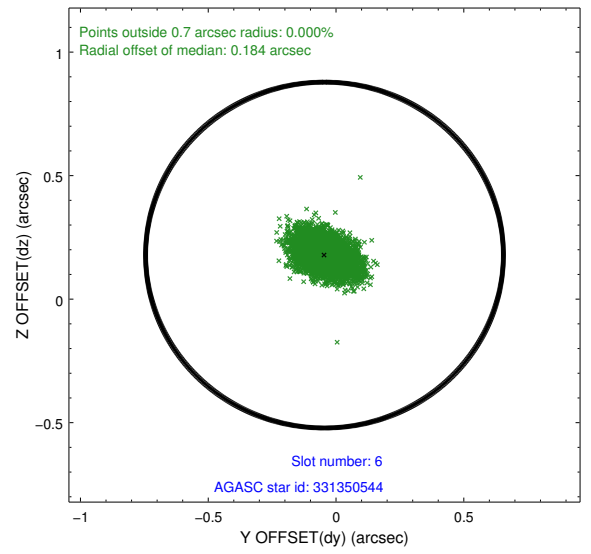
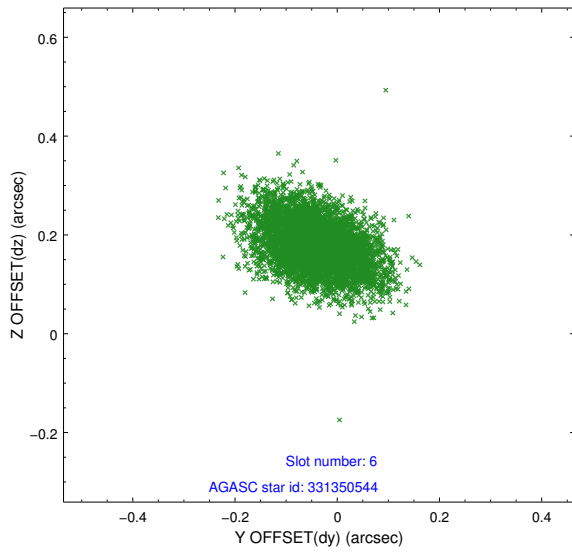
## 2.4.2 Slot 4



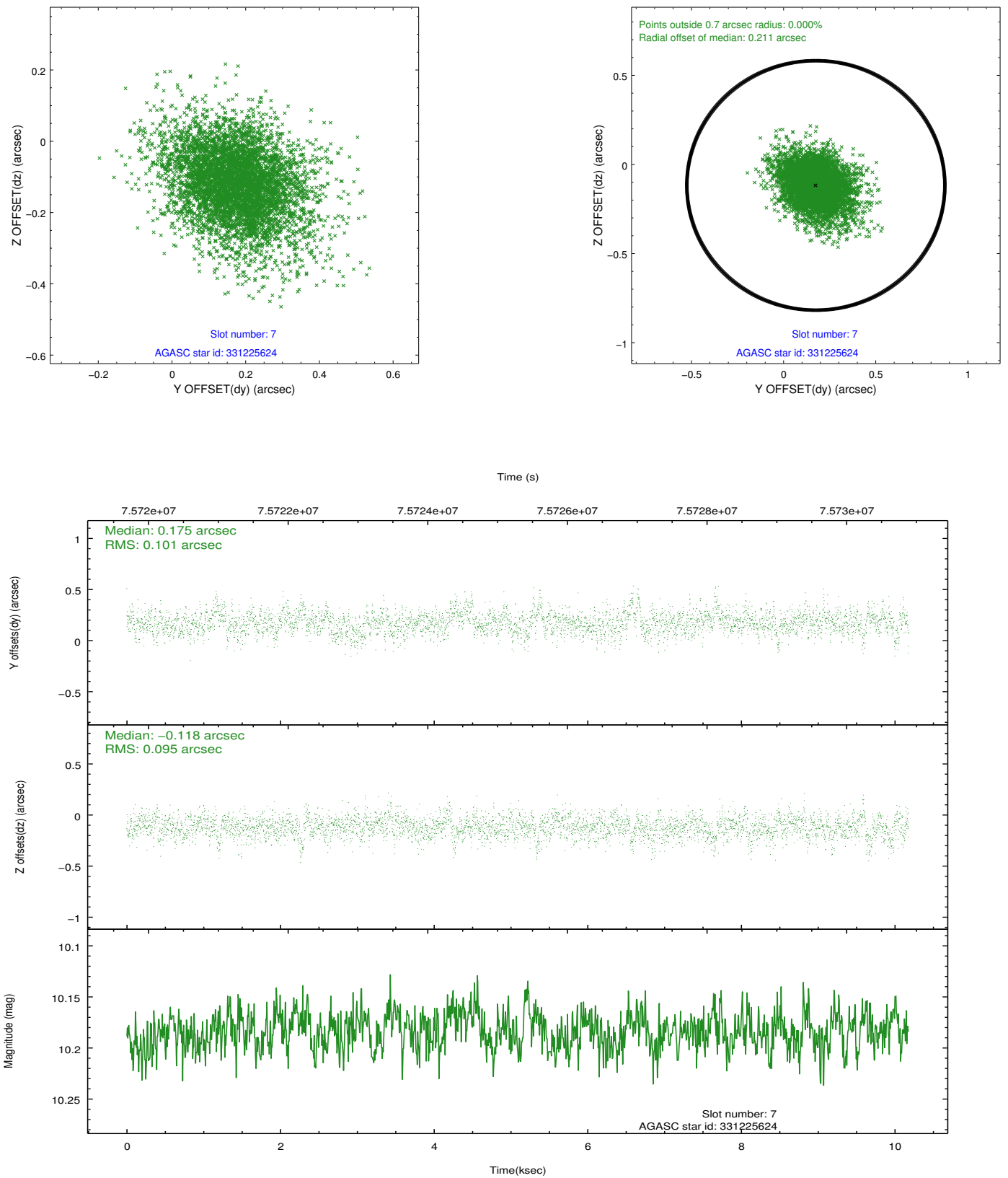
### 2.4.3 Slot 5



## 2.4.4 Slot 6

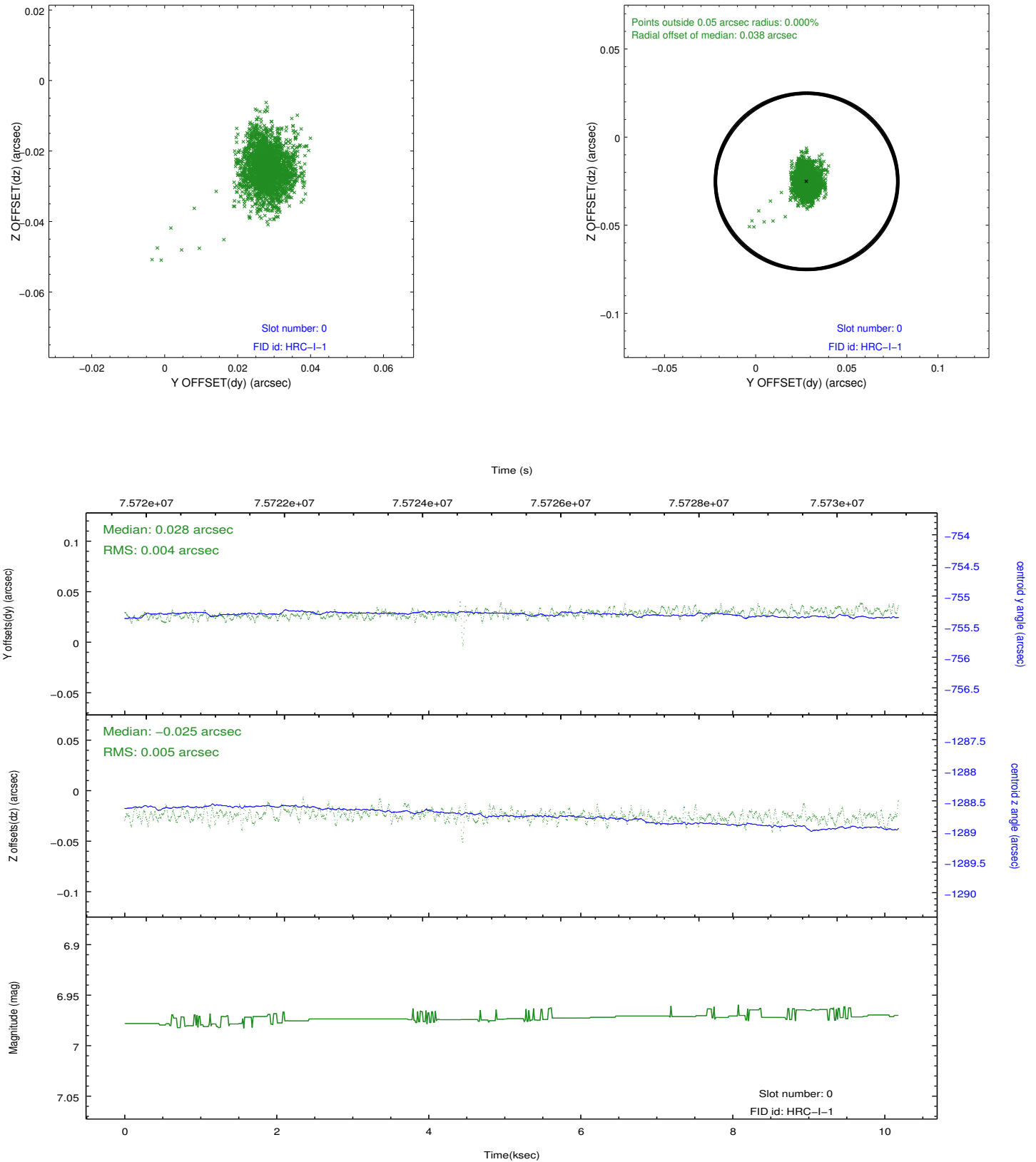


## 2.4.5 Slot 7

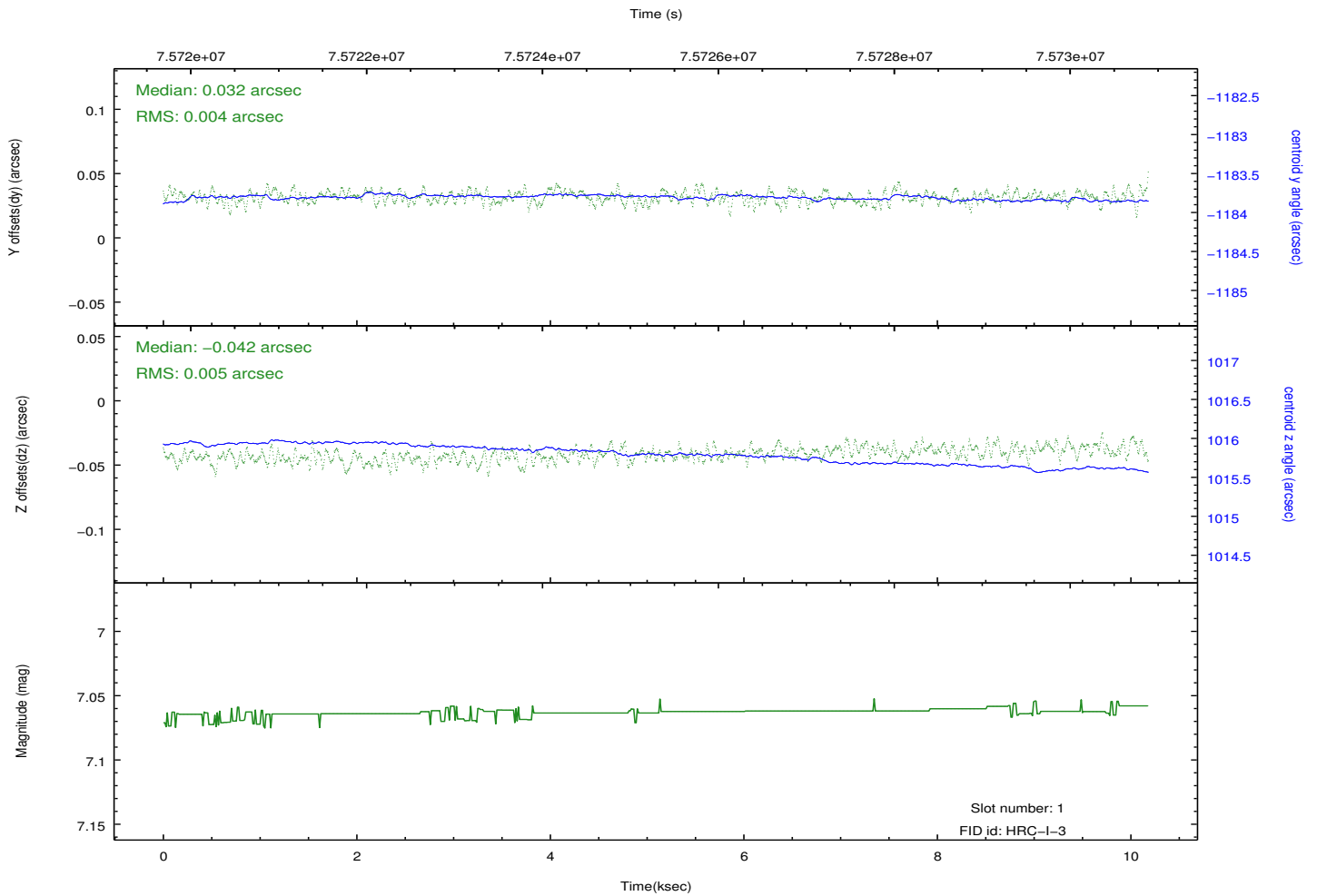
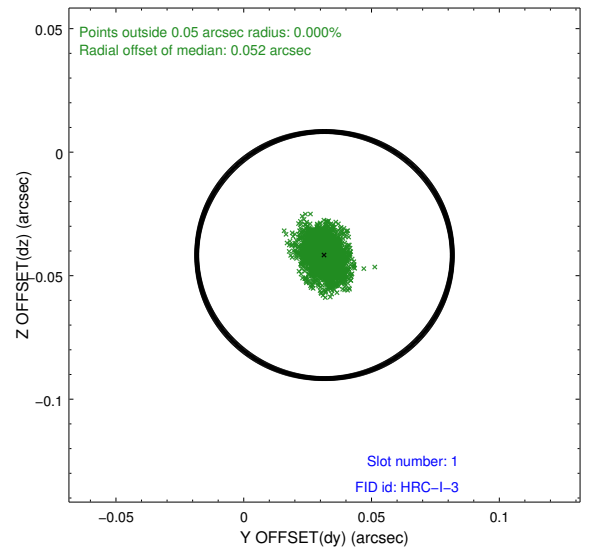
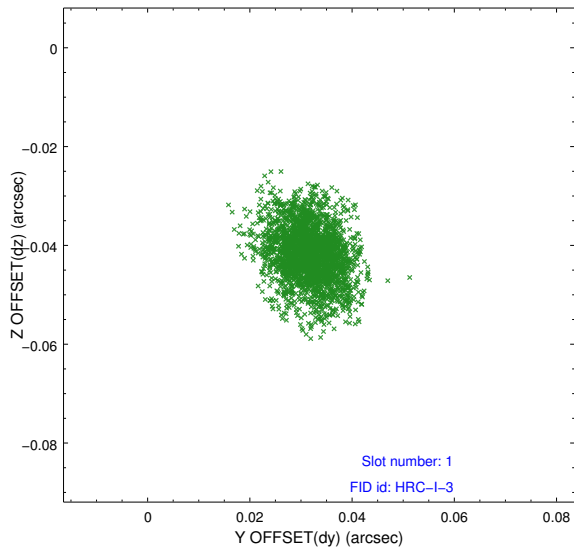


## 2.5 FID Slots

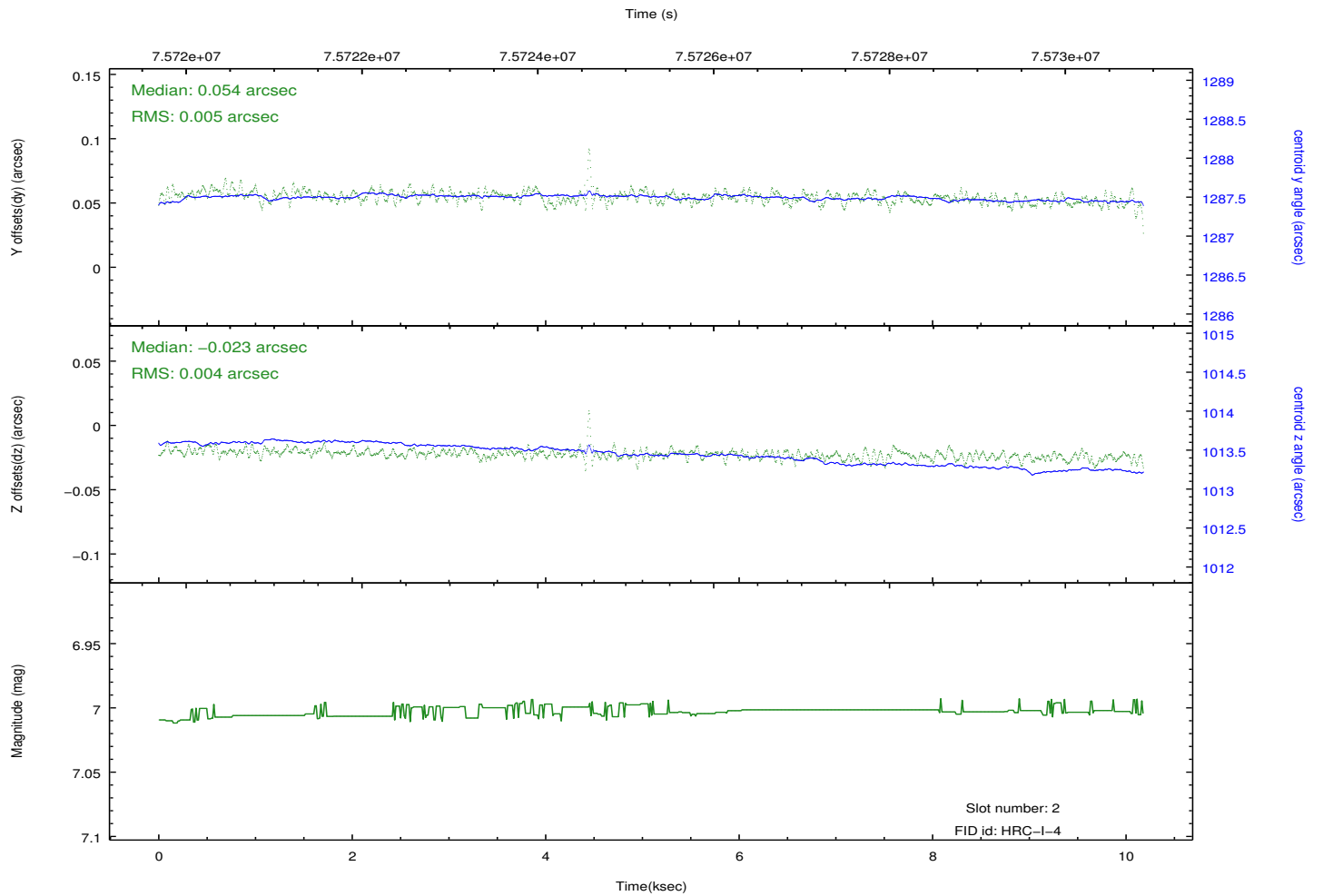
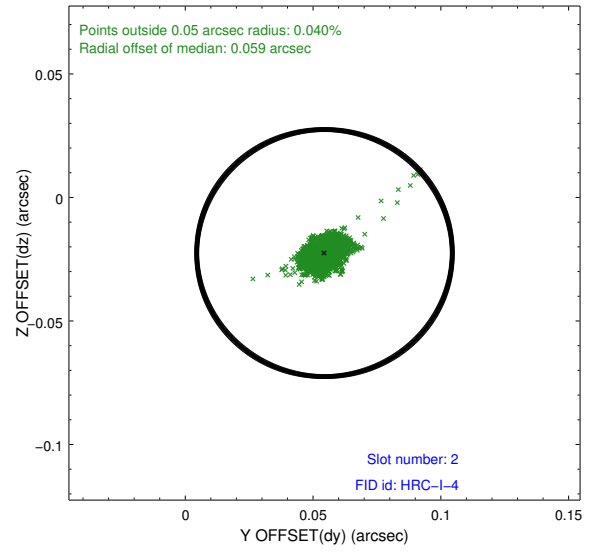
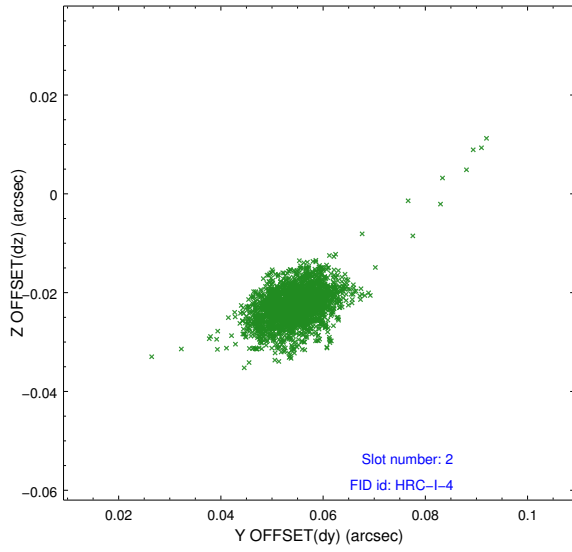
### 2.5.1 Slot 0



## 2.5.2 Slot 1



### 2.5.3 Slot 2



# A Summary

## A.1 Status

V&V Scientist	Beth Sundheim
V&V Date (YYYY-MM-DD)	2012.08.31
V&V Edition	1
V&V Disposition and Status	OK
V&V Charge Time	10.004

## A.2 Comments