

V&V Reference Report

L2 ASCDS Version : 8.4.4

Observation 8939 - L2 Version 2
Chandra X-Ray Center

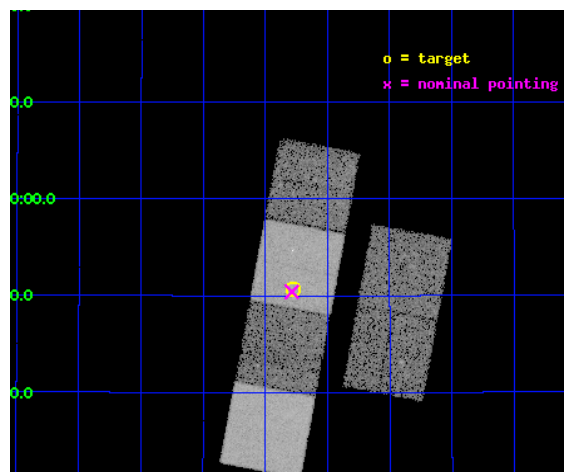
L2 Processing Date : May 12 2012

Contents

1	Front	2
2	OBI	3
2.1	OBI	3
2.1.1	Images	3
2.1.2	Bias	3
2.1.3	Parameters	4
2.1.4	Events	4
2.2	Compared Parameters	5
2.3	Aspect	6
2.4	Star Slots	9
2.4.1	Slot 3	9
2.4.2	Slot 4	10
2.4.3	Slot 5	11
2.4.4	Slot 6	12
2.4.5	Slot 7	13
2.5	FID Slots	14
2.5.1	Slot 0	14
2.5.2	Slot 1	15
2.5.3	Slot 2	16
A	Summary	17
A.1	Status	17
A.2	Comments	17

1 Front

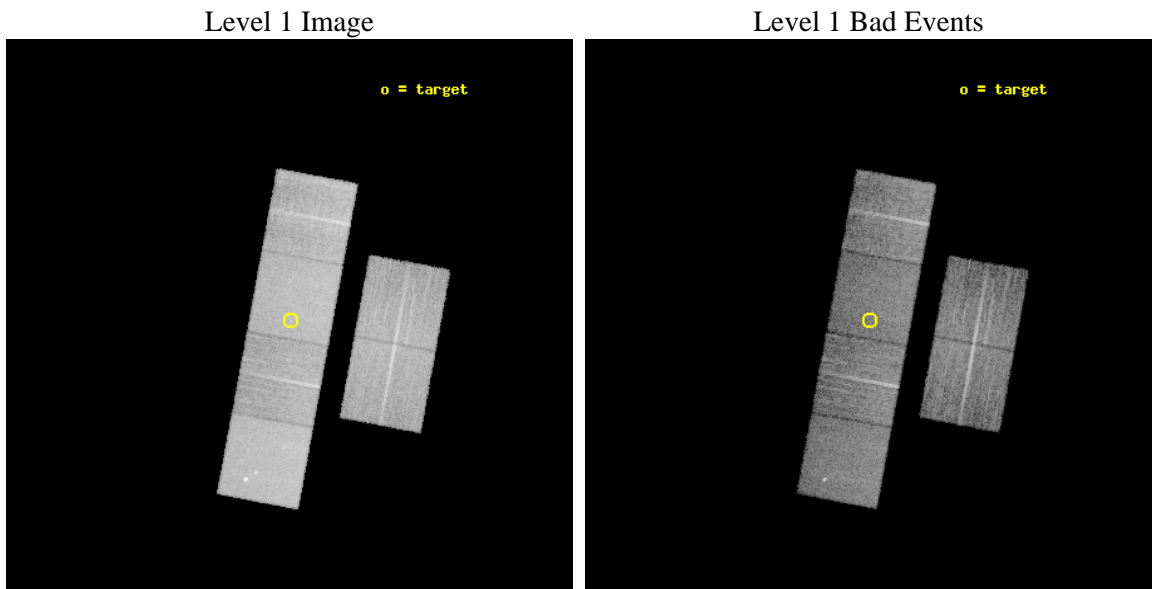
seq_num	200520	Sequence number
obs_id	8939	Observation id
title	X-ray Emission from a 7 Myr Old, Accreting Herbig Ae star and its Jet: MWC 480	Proposal title
observer	Dr. Carol Grady	Principal investigator
object	MWC 480	Source name
dtcycle	0	
cycle	P	events from which exps? Prim/Second/Both
ra_targ	74.692917	Observer's specified target RA [deg]
dec_targ	29.843611	Observer's specified target Dec [deg]
ra_nom	74.696633308567	Nominal RA [deg]
dec_nom	29.839997581095	Nominal Dec [deg]
roll_nom	280.54428625865	Nominal Roll [deg]
revision	2	Processing version of data
ontime	9950.8222254515	Sum of GTIs [s]
livetime	9824.818922767	Livetime [s]
ontime2	9947.6222951412	Sum of GTIs [s]
ontime3	9950.6991054416	Sum of GTIs [s]
ontime5	9950.7811854482	Sum of GTIs [s]
ontime6	9950.7401454449	Sum of GTIs [s]
ontime7	9950.8222254515	Sum of GTIs [s]
ontime8	9950.6580654383	Sum of GTIs [s]
l2events	156096	Number of level 2 events



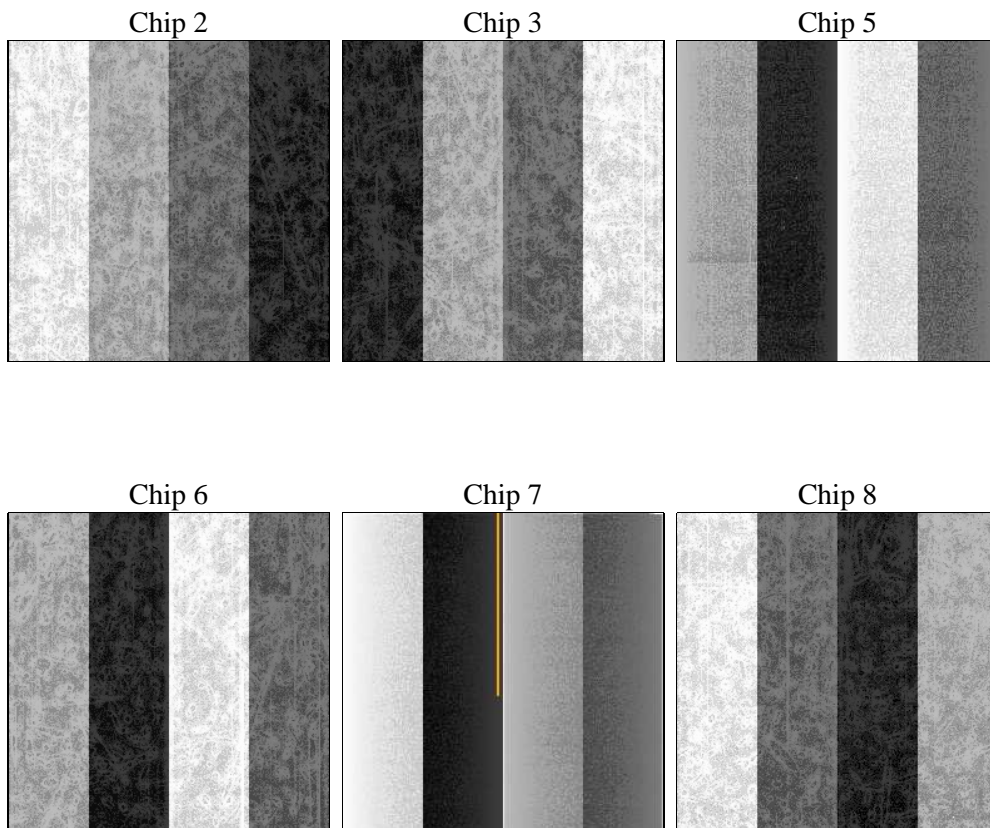
2 OBI

2.1 OBI

2.1.1 Images



2.1.2 Bias



2.1.3 Parameters

obi_num	0	Obi number	sched_exp_time	10000.000000	[s] Scheduled observation exposure time
ascdsver	8.4.4	Processing system revision	ontime	9950.8222254515	Sum of GTIs [s]
caldbver	4.4.9	 	ontime2	9947.6222951412	Sum of GTIs [s]
date	2012-05-12T13:44:18	Date and time of file creation	ontime3	9950.6991054416	Sum of GTIs [s]
revision	2	Processing version of data	ontime5	9950.7811854482	Sum of GTIs [s]
			ontime6	9950.7401454449	Sum of GTIs [s]
			ontime7	9950.8222254515	Sum of GTIs [s]
			ontime8	9950.6580654383	Sum of GTIs [s]
			l1events	675667	Number of level 1 events

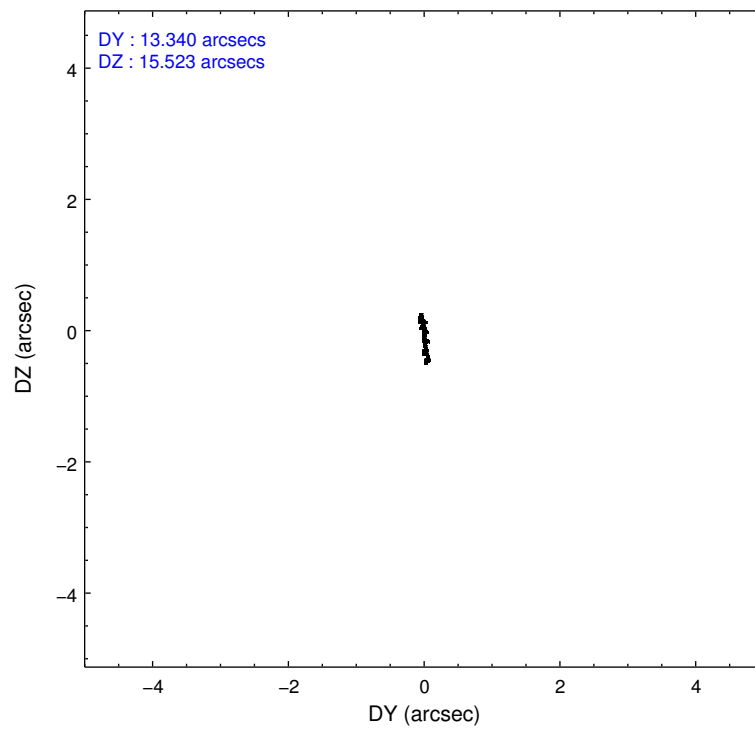
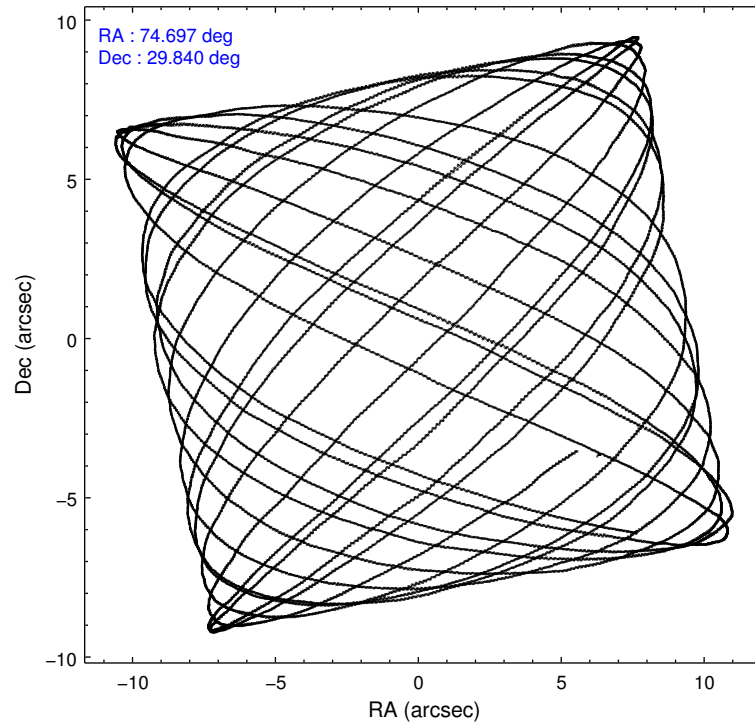
2.1.4 Events

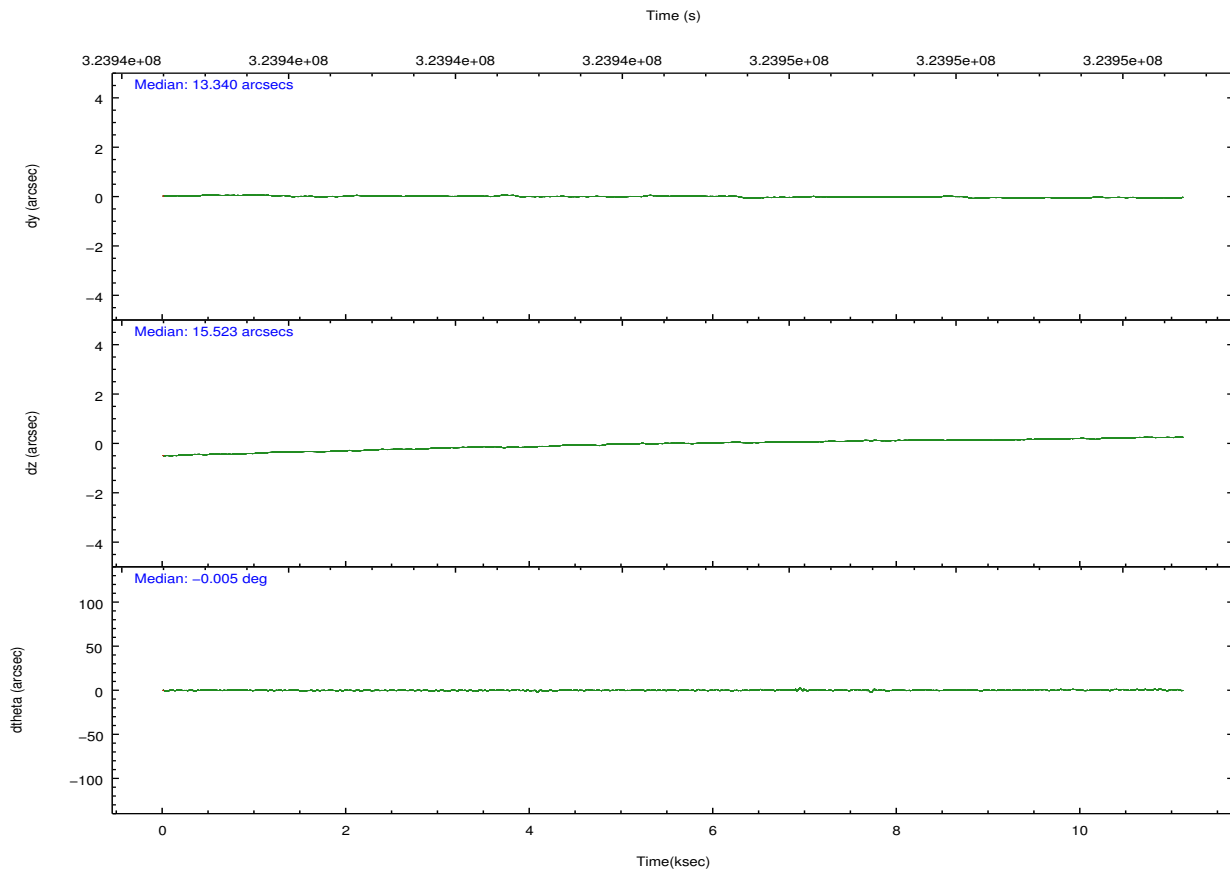
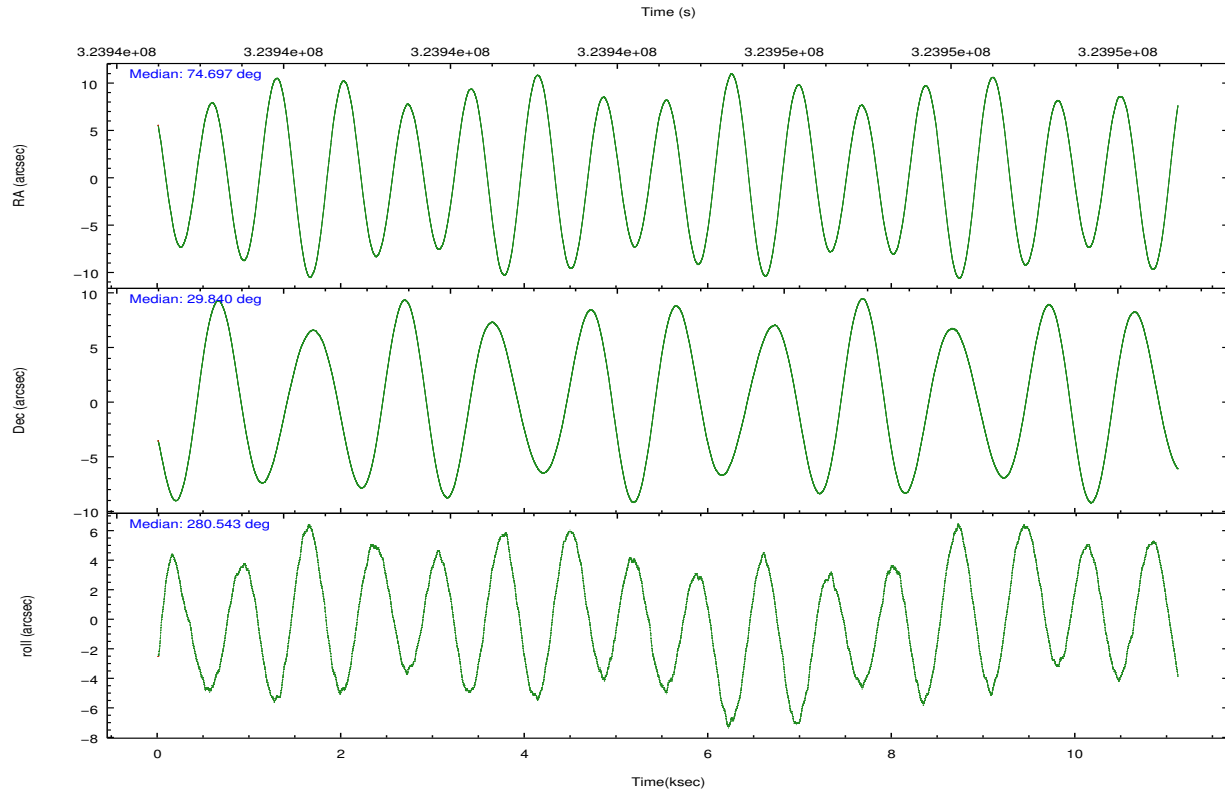
	ccd 2	ccd 3	ccd 5	ccd 6	ccd 7	ccd 8		ccd 2	ccd 3	ccd 5	ccd 6	ccd 7	ccd 8
level 1 events	93468	91383	144745	94428	130527	121116	grade 0 events	5104	4884	4601	4558	4605	8310
rejected events	82070	80041	79426	82852	76552	94486		5%	5%	3%	4%	3%	6%
rejected %	87%	87%	54%	87%	58%	78%	grade 1 events	56	62	210	53	128	94
								0%	0%	0%	0%	0%	0%
							grade 2 events	2419	2272	20540	2536	10896	5999
								2%	2%	14%	2%	8%	4%
							grade 3 events	1012	1042	2557	1046	4556	2725
								1%	1%	1%	1%	3%	2%
							grade 4 events	1013	1090	2174	1127	4629	2451
								1%	1%	1%	1%	3%	2%
							grade 5 events	3937	4388	10518	4447	12227	6056
								4%	4%	7%	4%	9%	5%
							grade 6 events	1860	2065	35484	2318	29325	7153
								1%	2%	24%	2%	22%	5%
							grade 7 events	78067	75580	68661	78343	64161	88328
								83%	82%	47%	82%	49%	72%

2.2 Compared Parameters

Parameter	Planned	Actual	Parameter	Planned	Actual
Instrument	ACIS	ACIS	Obspar format version number	7	7
Detector	ACIS-235678	ACIS-235678	Obspar file type	PREDICTED	ACTUAL
Grating	NONE	NONE	Obspar update status	NONE	UPDATED
Data mode	FAINT	FAINT	CCD I0 on	N	N
Observation mode	POINTING	POINTING	CCD I1 on	N	N
[deg] Pointing RA	74.675851	74.69663330856739	CCD I2 on	O1	Y
[deg] Pointing Dec	29.860557	29.8399975810948	CCD I3 on	O2	Y
[deg] Pointing Roll	280.398003	280.5442862586505	CCD S0 on	N	N
[mm] SIM focus pos	-0.684267	-0.6828225247311905	CCD S1 on	Y	Y
[mm] SIM defocus	0	0.001444936568705701	CCD S2 on	Y	Y
[mm] SIM translation stage pos	-190.132523	-190.1425803651734	CCD S3 on	Y	Y
[mm] SIM translation stage offset	0	0.01005778216563158	CCD S4 on	Y	Y
[s] Observation start time (MET)	323940164.184000	323938738.3985	CCD S5 on	N	N
Observation start date	2008-04-07T07:21:39	2008-04-07T06:58:58	Number of optional ACIS chips dropped	0	0
[s] Observation end time (MET)	323950164.184000	323951066.0741	On-chip summing requested	N	N
Observation end date	2008-04-07T10:08:19	2008-04-07T10:24:26	Subarray requested	NONE	NONE
Read mode	TIMED	TIMED	Alternating exposures requested	N	N
			[s] Primary exposure time	0.000000	3.2

2.3 Aspect



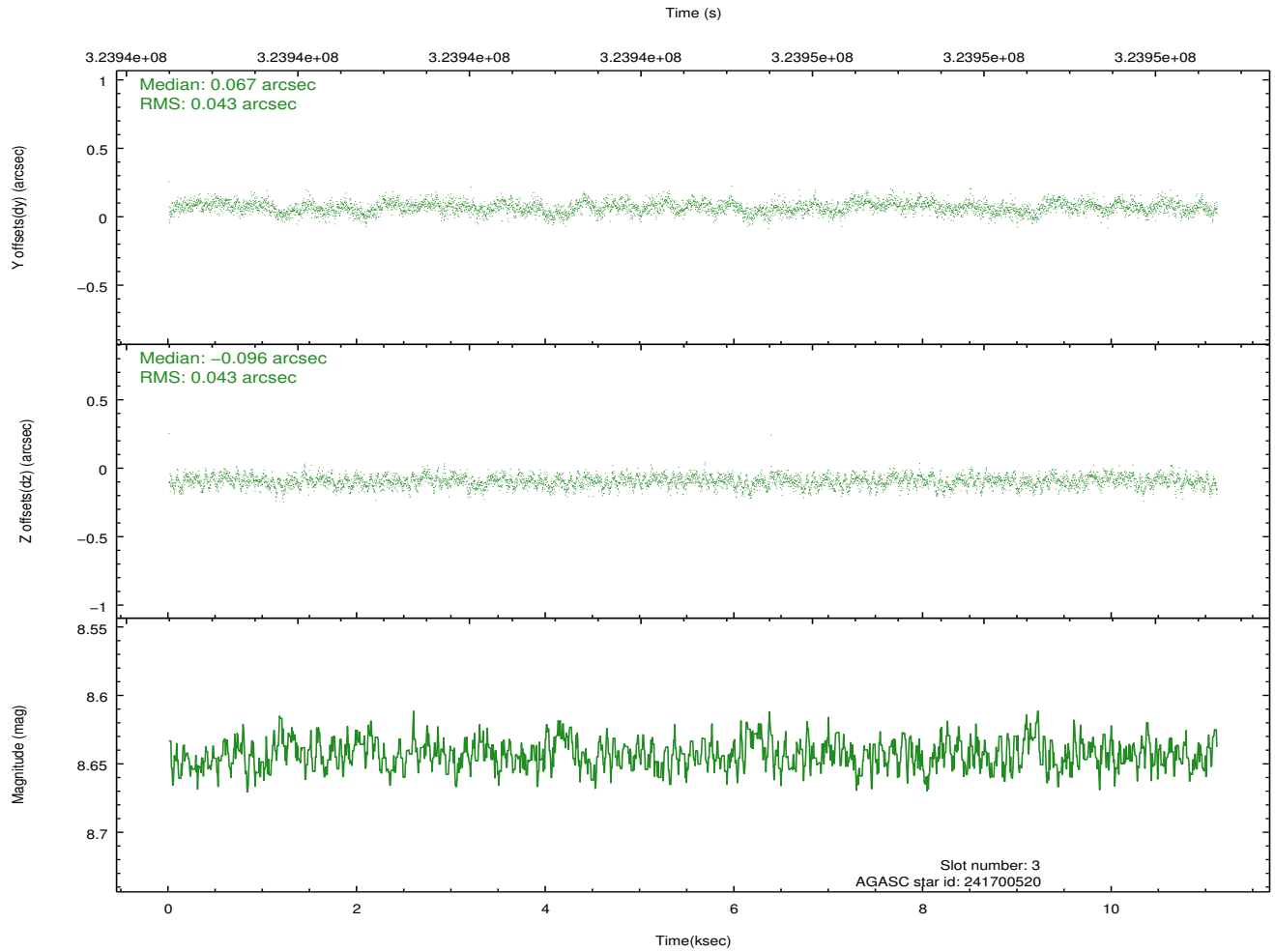
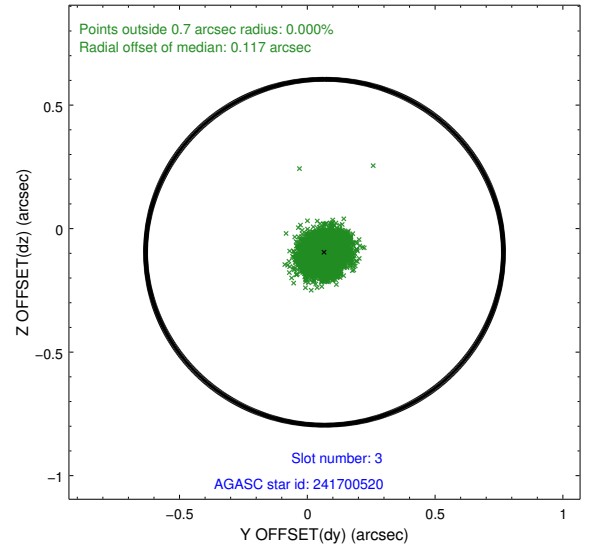
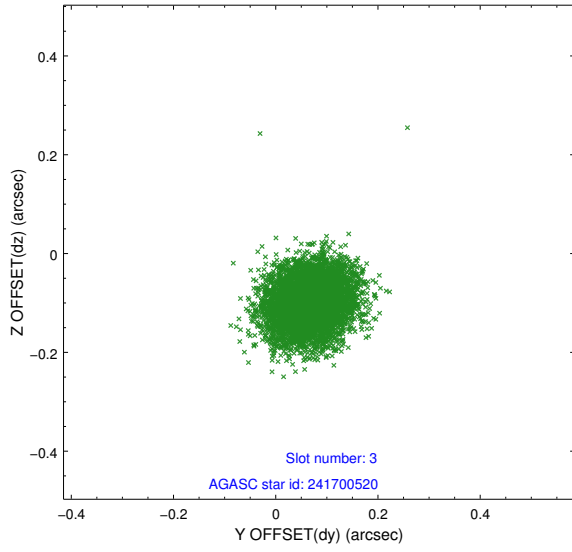


Slot Statistics

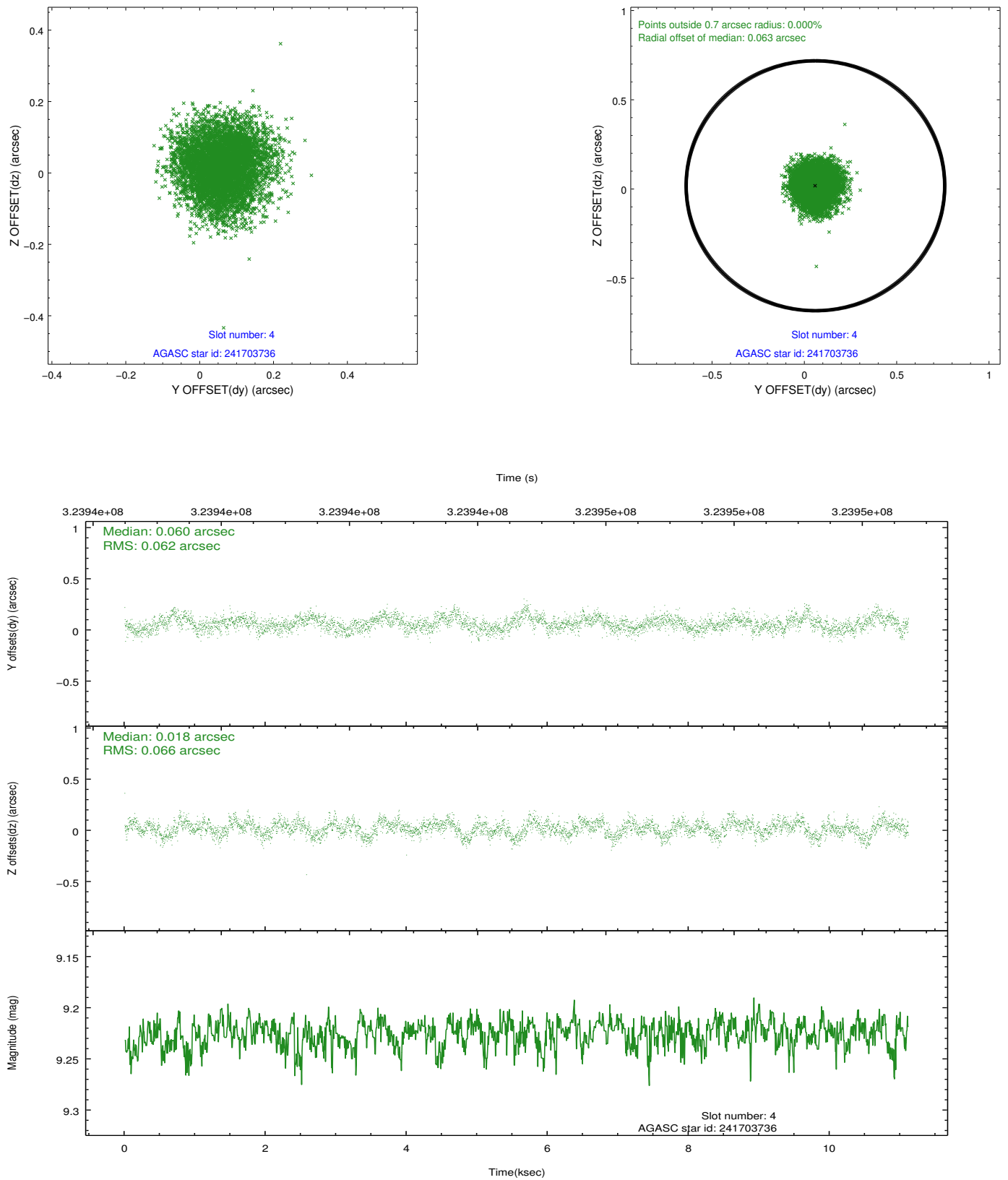
slot	status	id	mag	n_pts	med_dy	med_dz	dr1	dr2	ra	dec	mean_y	mean_z
0	FID	ACIS-S-2	7.09	2711	-0.061	-0.030	0.008	0.013	0.000000	0.000000	-766.29	-1736.85
1	FID	ACIS-S-4	7.19	2711	0.187	0.037	0.007	0.013	0.000000	0.000000	2146.99	171.27
2	FID	ACIS-S-5	7.22	2711	-0.158	0.001	0.007	0.011	0.000000	0.000000	-1818.67	165.36
3	GUIDE	241700520	8.64	5419	0.067	-0.096	0.064	0.104	74.420132	29.886487	-236.43	-767.84
4	GUIDE	241703736	9.22	5418	0.060	0.018	0.097	0.154	75.028019	29.497278	1484.06	849.85
5	GUIDE	241704760	8.97	5417	0.244	0.218	0.078	0.124	75.290762	29.334791	2205.68	1558.26
6	GUIDE	312870232	7.97	5420	-0.263	-0.226	0.069	0.112	73.950966	30.337905	-2103.17	-1903.57
7	GUIDE	313012784	8.26	5418	-0.106	0.093	0.072	0.113	74.505645	30.125716	-1035.02	-348.81

2.4 Star Slots

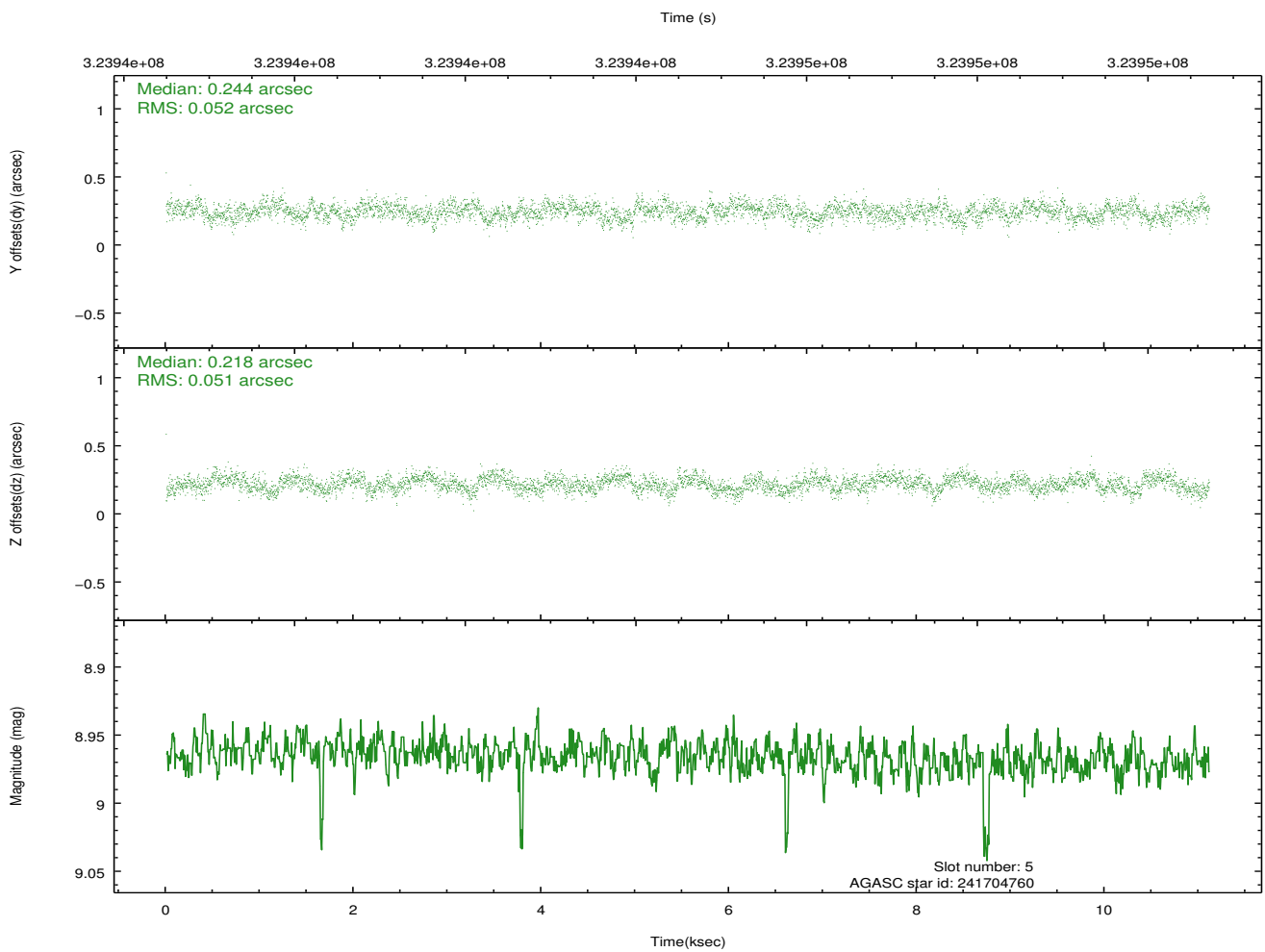
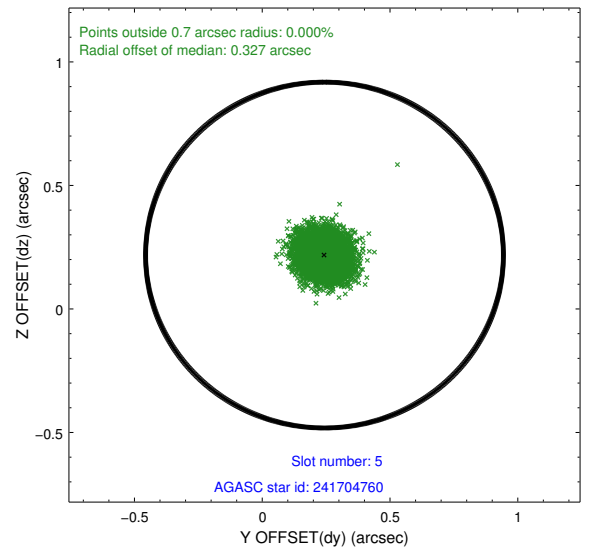
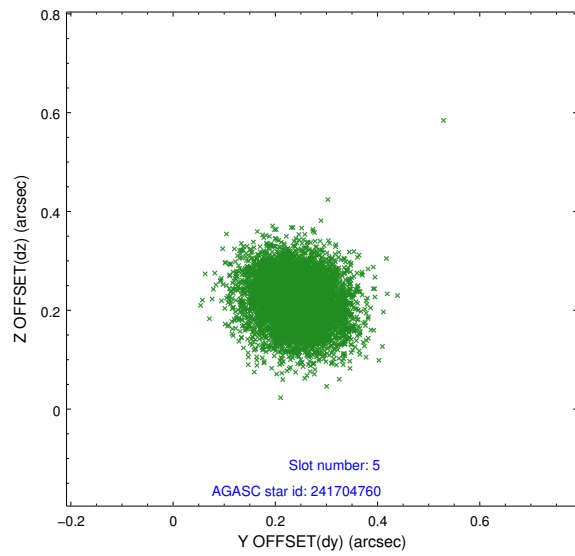
2.4.1 Slot 3



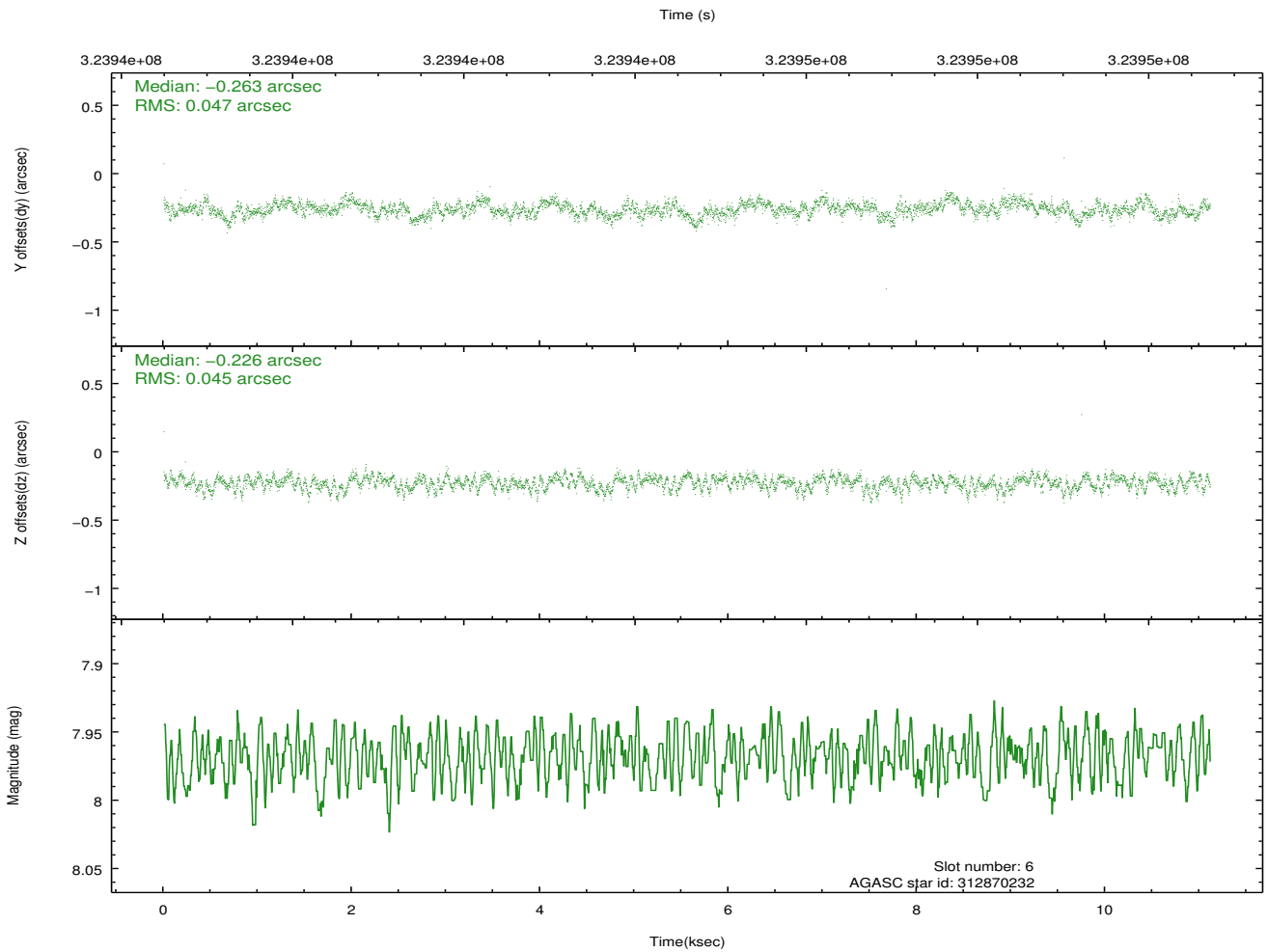
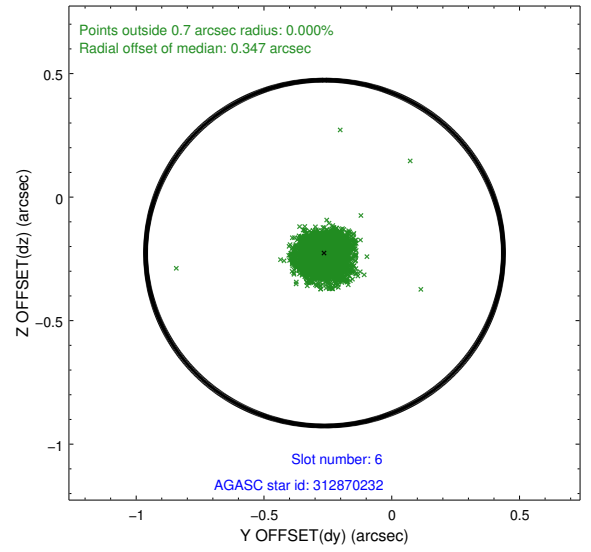
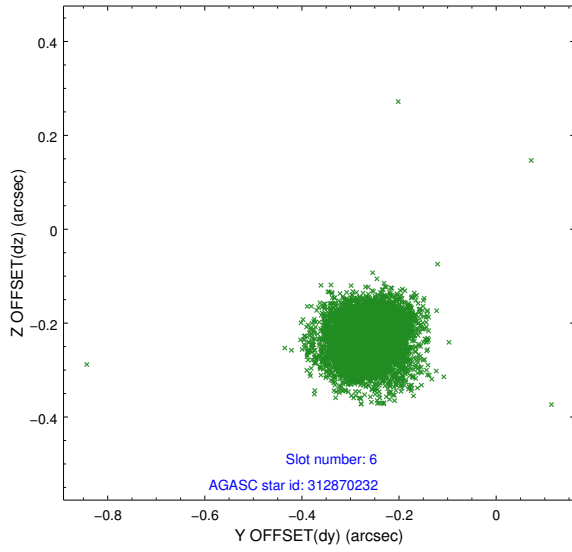
2.4.2 Slot 4



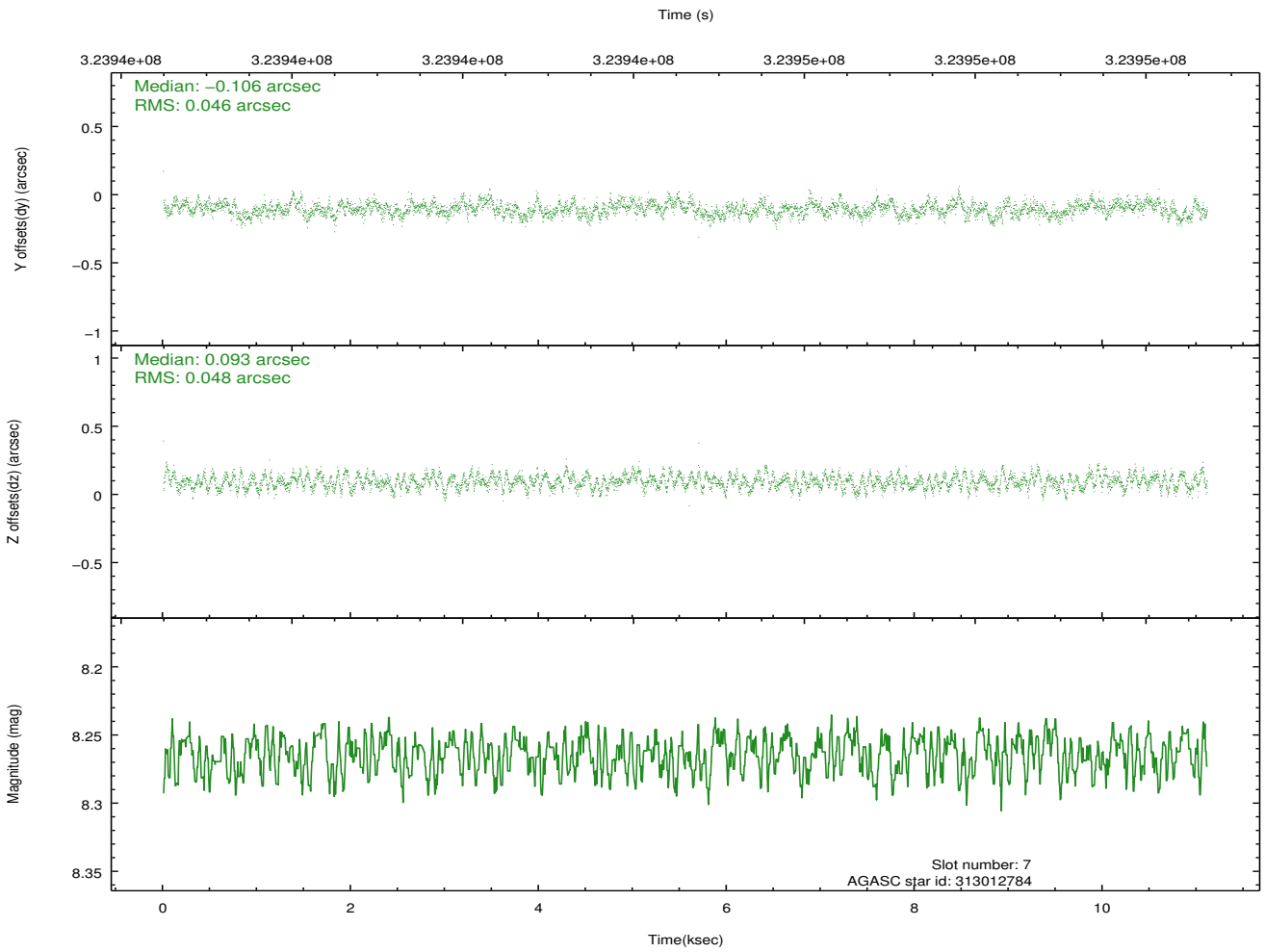
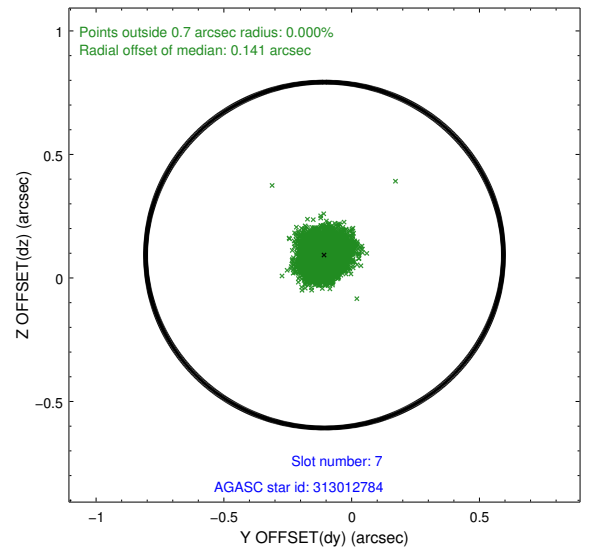
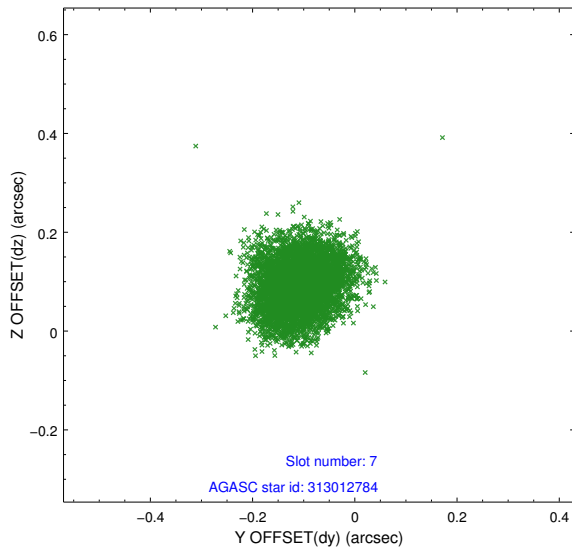
2.4.3 Slot 5



2.4.4 Slot 6

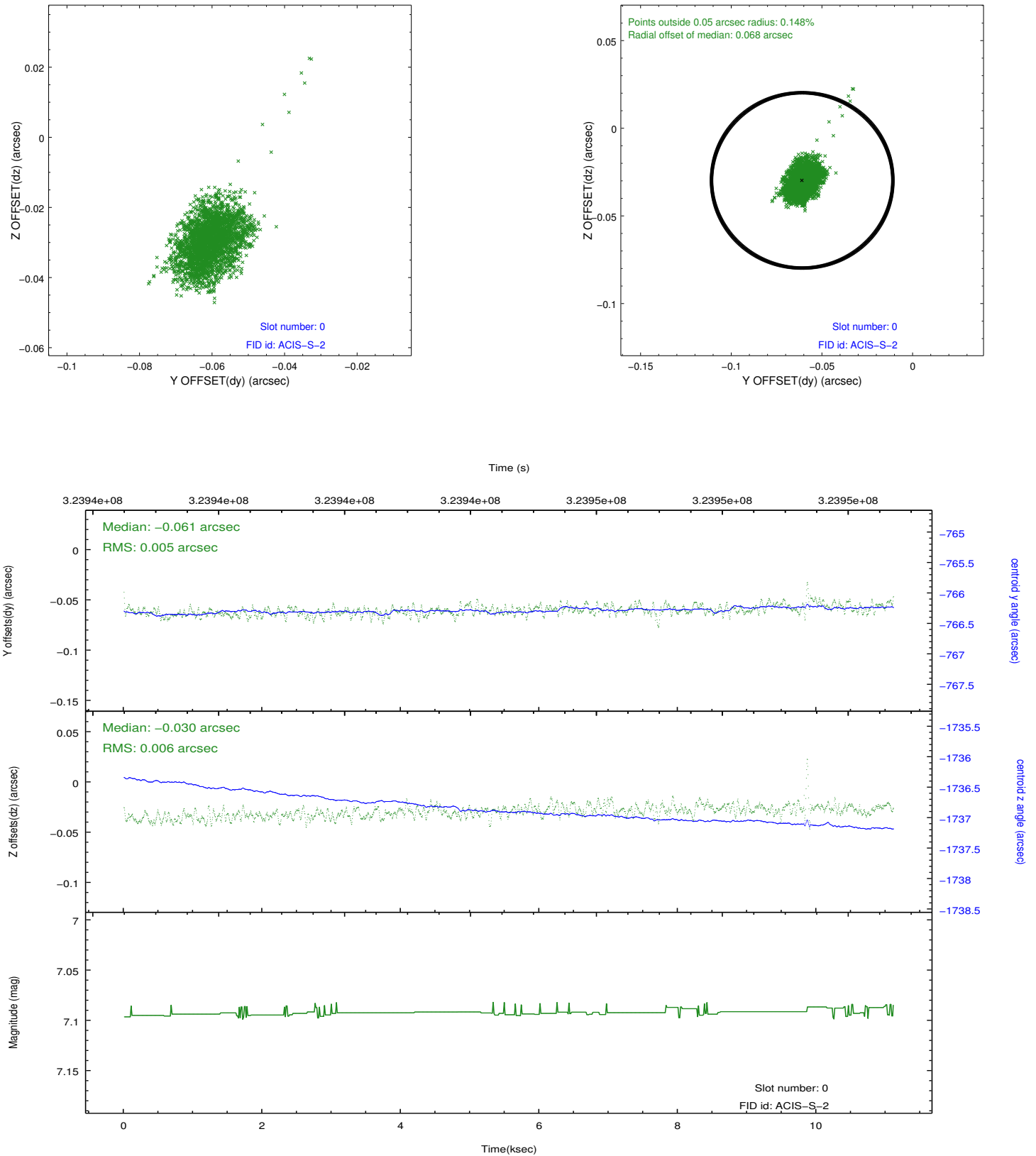


2.4.5 Slot 7

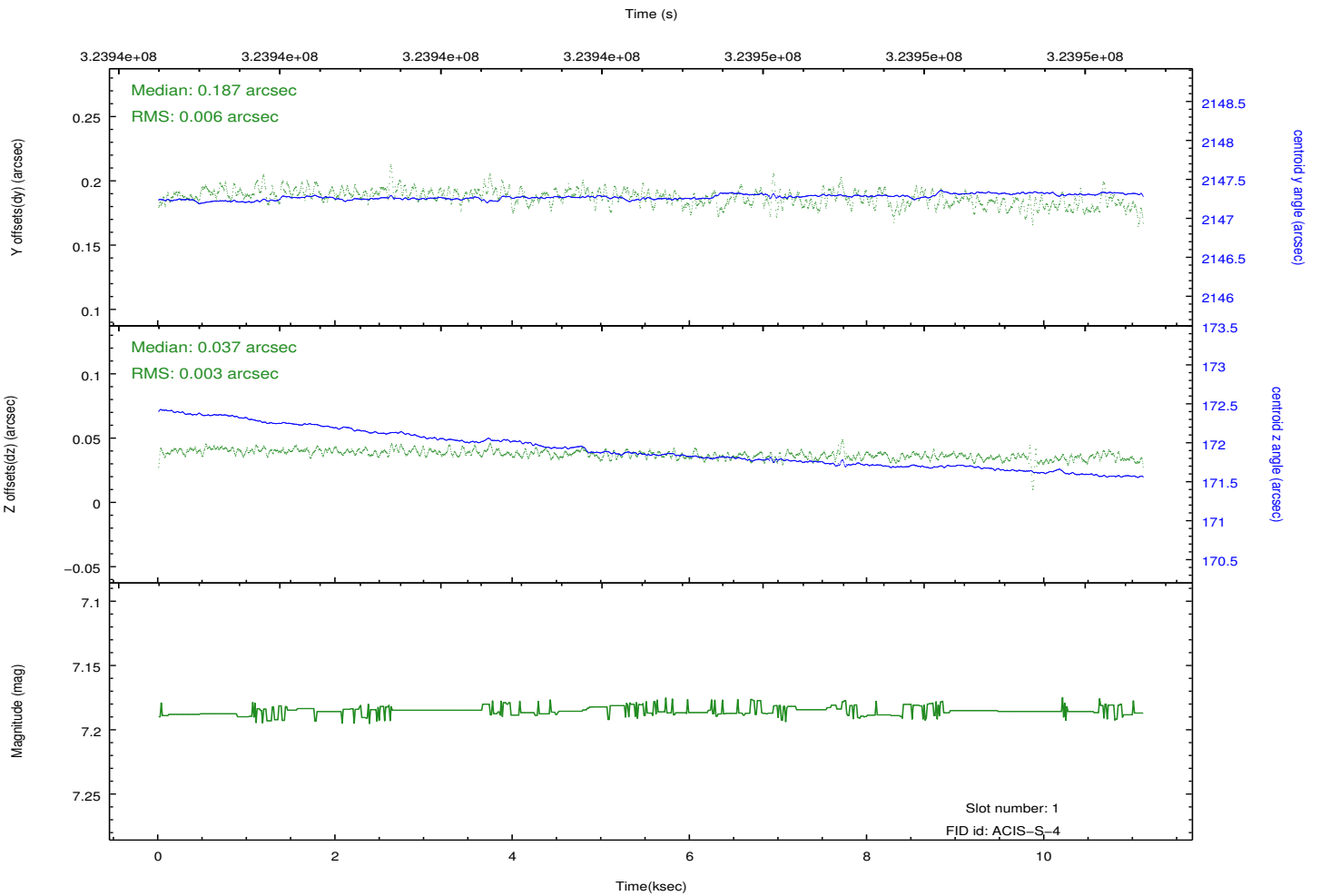
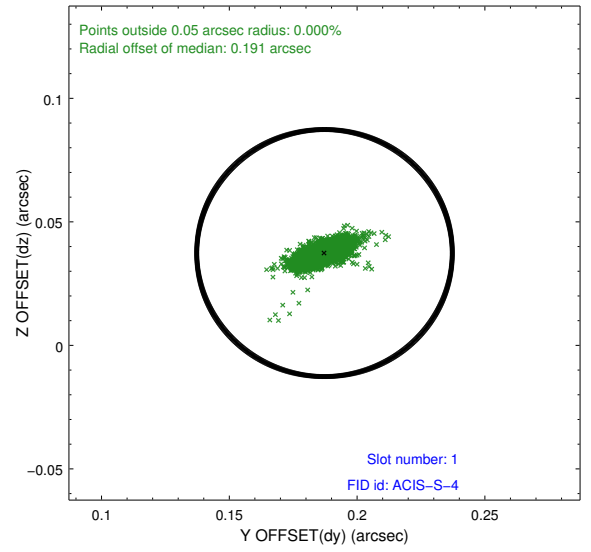
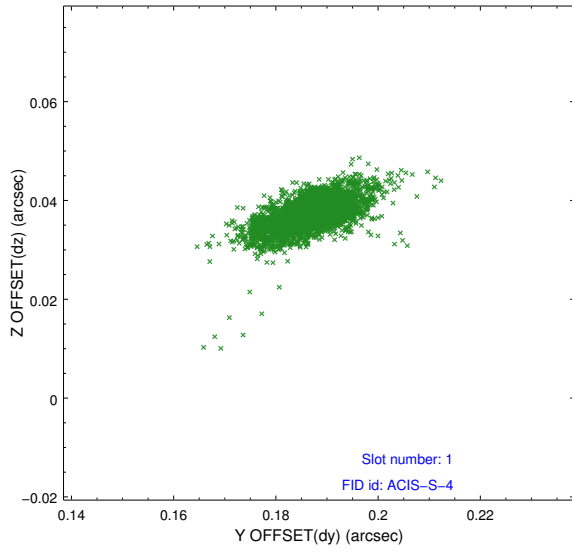


2.5 FID Slots

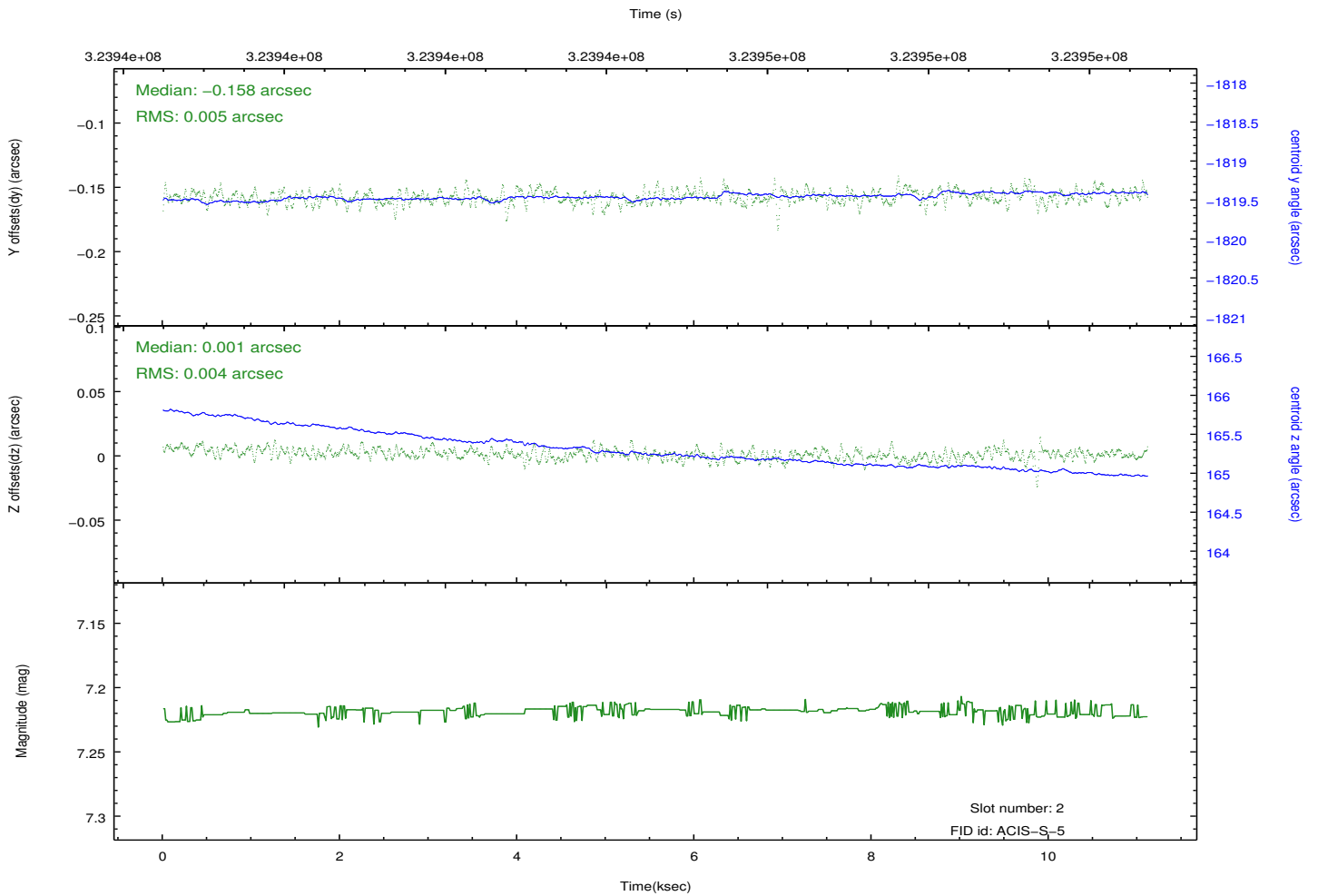
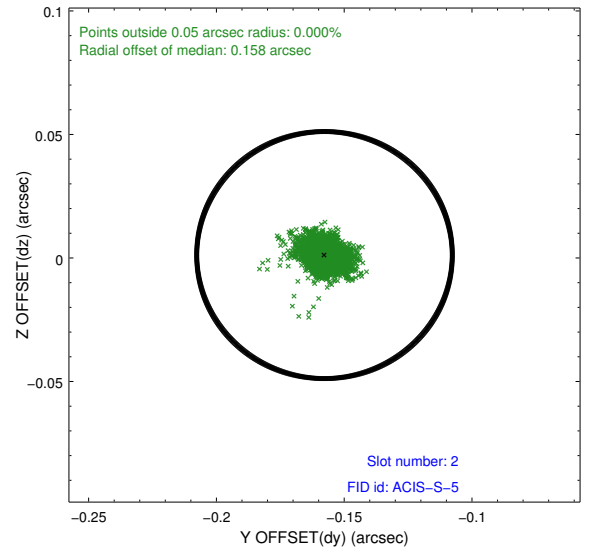
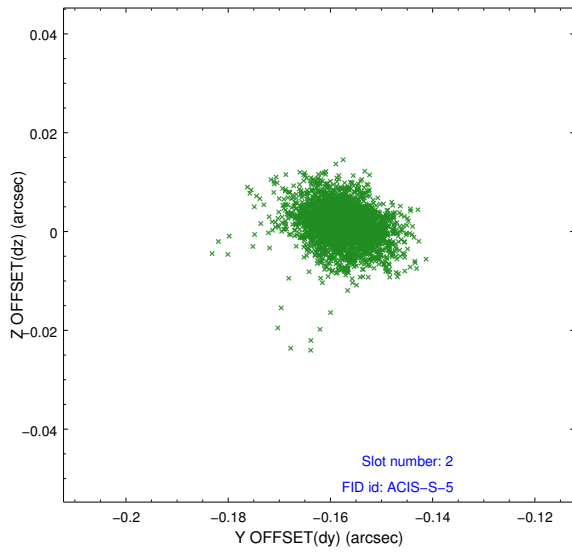
2.5.1 Slot 0



2.5.2 Slot 1



2.5.3 Slot 2



A Summary

A.1 Status

V&V Scientist	Jen Lauer
V&V Date (YYYY-MM-DD)	2012.05.15
V&V Edition	1
V&V Disposition and Status	OK
V&V Charge Time	9.95199996

A.2 Comments