

V&V Reference Report

L2 ASCDS Version : 8.4.5

Observation 909 - L2 Version 4
Chandra X-Ray Center

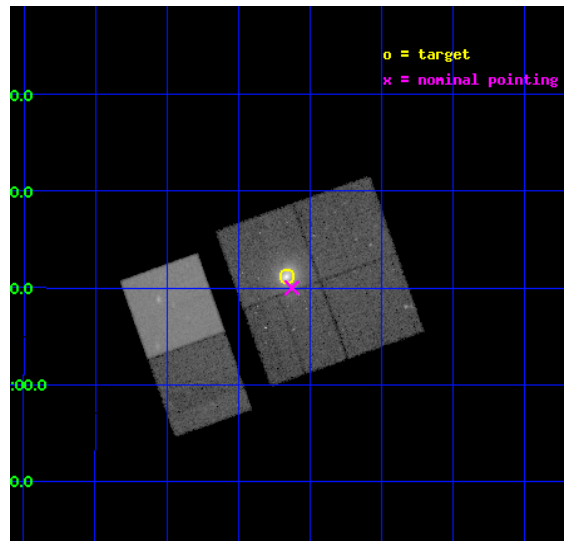
L2 Processing Date : Aug 27 2012

Contents

1	Front	2
2	OBI	3
2.1	OBI	3
2.1.1	Images	3
2.1.2	Bias	3
2.1.3	Parameters	4
2.1.4	Events	4
2.2	Compared Parameters	5
2.3	Aspect	6
2.4	Star Slots	9
2.4.1	Slot 3	9
2.4.2	Slot 4	10
2.4.3	Slot 5	11
2.4.4	Slot 6	12
2.4.5	Slot 7	13
2.5	FID Slots	14
2.5.1	Slot 0	14
2.5.2	Slot 1	15
2.5.3	Slot 2	16
A	Summary	17
A.1	Status	17
A.2	Comments	17

1 Front

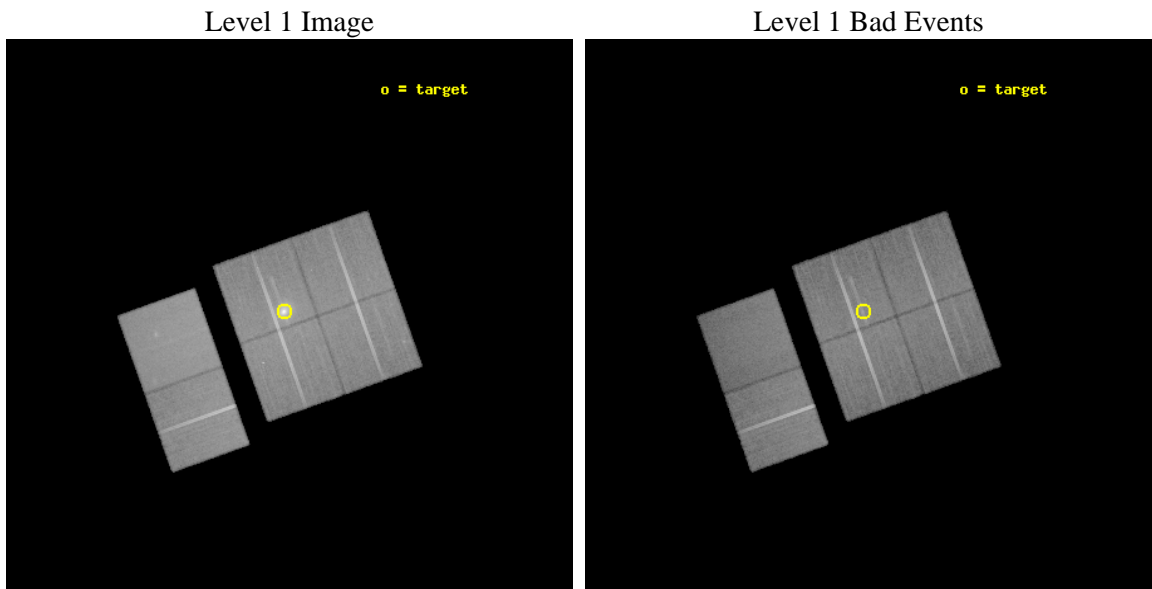
seq_num	800085	Sequence number
obs_id	909	Observation id
title	TOWARDS A UNIVERSAL TEMPERATURE PROFILE AT HIGH REDSHIFT	Proposal
observer	Dr. william forman	Principal investigator
object	ZW 3146	Source name
dtcycle	0	
cycle	P	events from which exps? Prim/Second/Both
ra_targ	155.915	Observer's specified target RA [deg]
dec_targ	4.186111	Observer's specified target Dec [deg]
ra_nom	155.90595673507	Nominal RA [deg]
dec_nom	4.1667436199917	Nominal Dec [deg]
roll_nom	250.44530394183	Nominal Roll [deg]
revision	4	Processing version of data
ontime	46595.20004338	Sum of GTIs [s]
livetime	46005.18356417	Livetime [s]
ontime0	46585.477142751	Sum of GTIs [s]
ontime1	46595.20004338	Sum of GTIs [s]
ontime2	46585.477112815	Sum of GTIs [s]
ontime3	46595.20004338	Sum of GTIs [s]
ontime6	46591.95908317	Sum of GTIs [s]
ontime7	46591.959083155	Sum of GTIs [s]
l2events	365795	Number of level 2 events



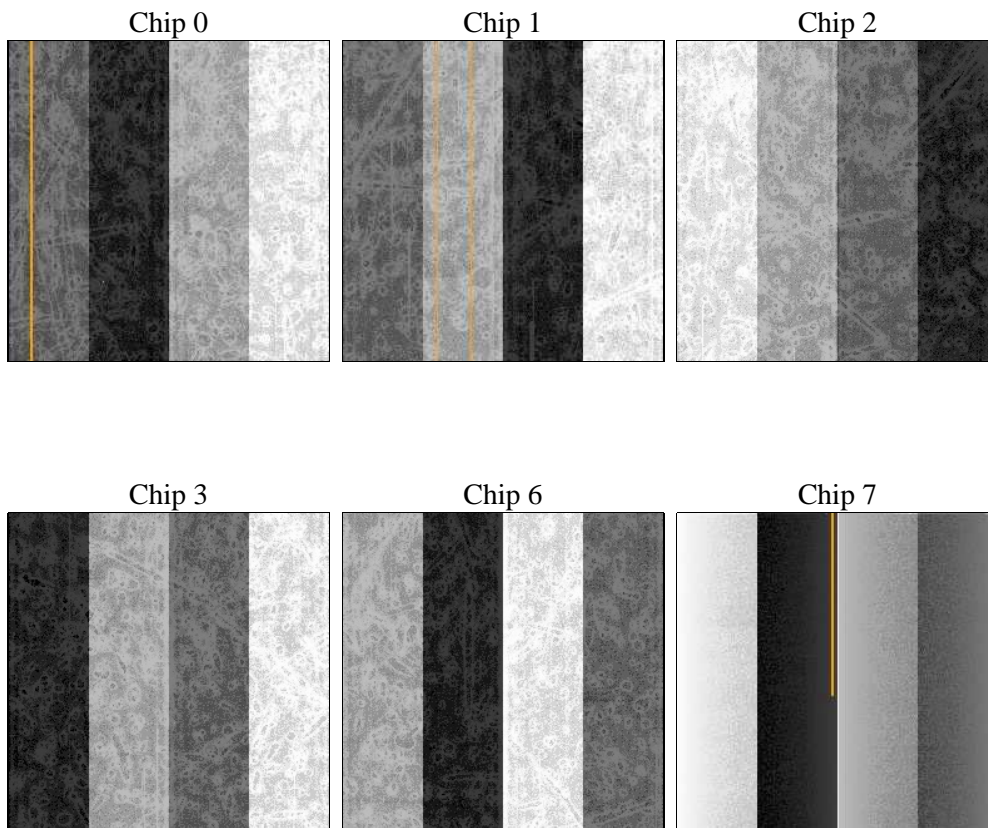
2 OBI

2.1 OBI

2.1.1 Images



2.1.2 Bias



2.1.3 Parameters

obi_num	0	Obi number	sched_exp_time	46500.000000	[s] Scheduled observation exposure time
ascdsver	8.4.5	Processing system revision	ontime	46595.20004338	Sum of GTIs [s]
caldbver	4.5.1.1	 	ontime0	46585.477142751	Sum of GTIs [s]
date	2012-08-27T19:55:00	Date and time of file creation	ontime1	46595.20004338	Sum of GTIs [s]
revision	4	Processing version of data	ontime2	46585.477112815	Sum of GTIs [s]
			ontime3	46595.20004338	Sum of GTIs [s]
			ontime6	46591.95908317	Sum of GTIs [s]
			ontime7	46591.959083155	Sum of GTIs [s]
			l1events	2105124	Number of level 1 events

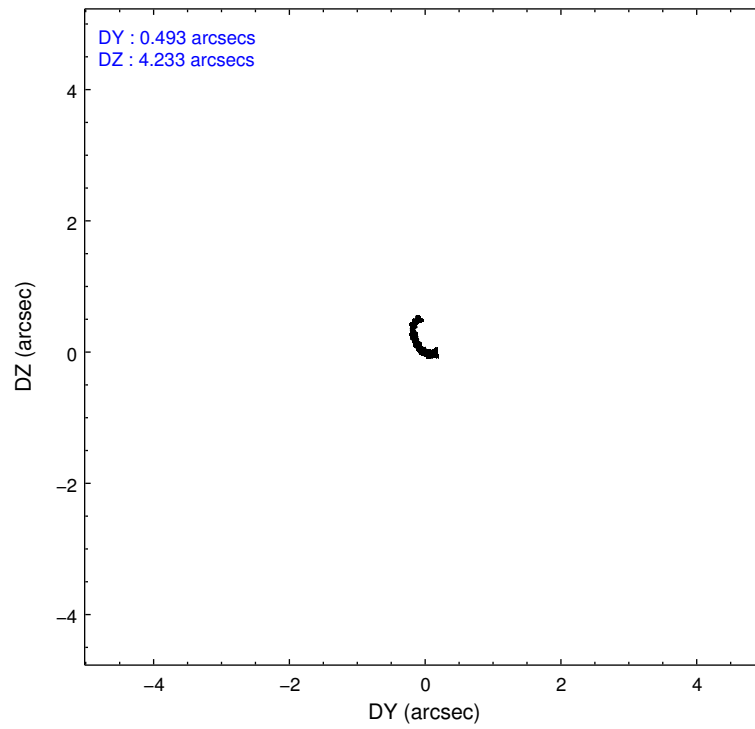
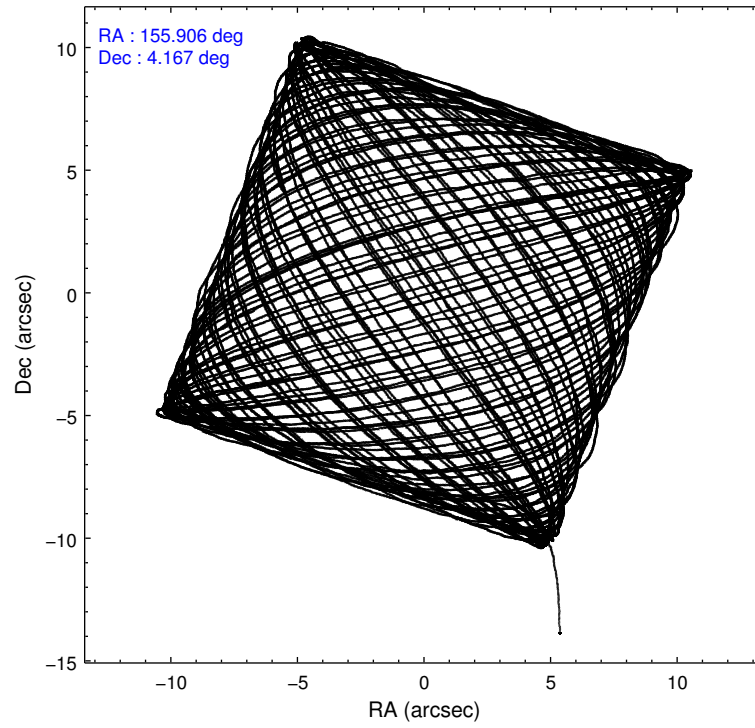
2.1.4 Events

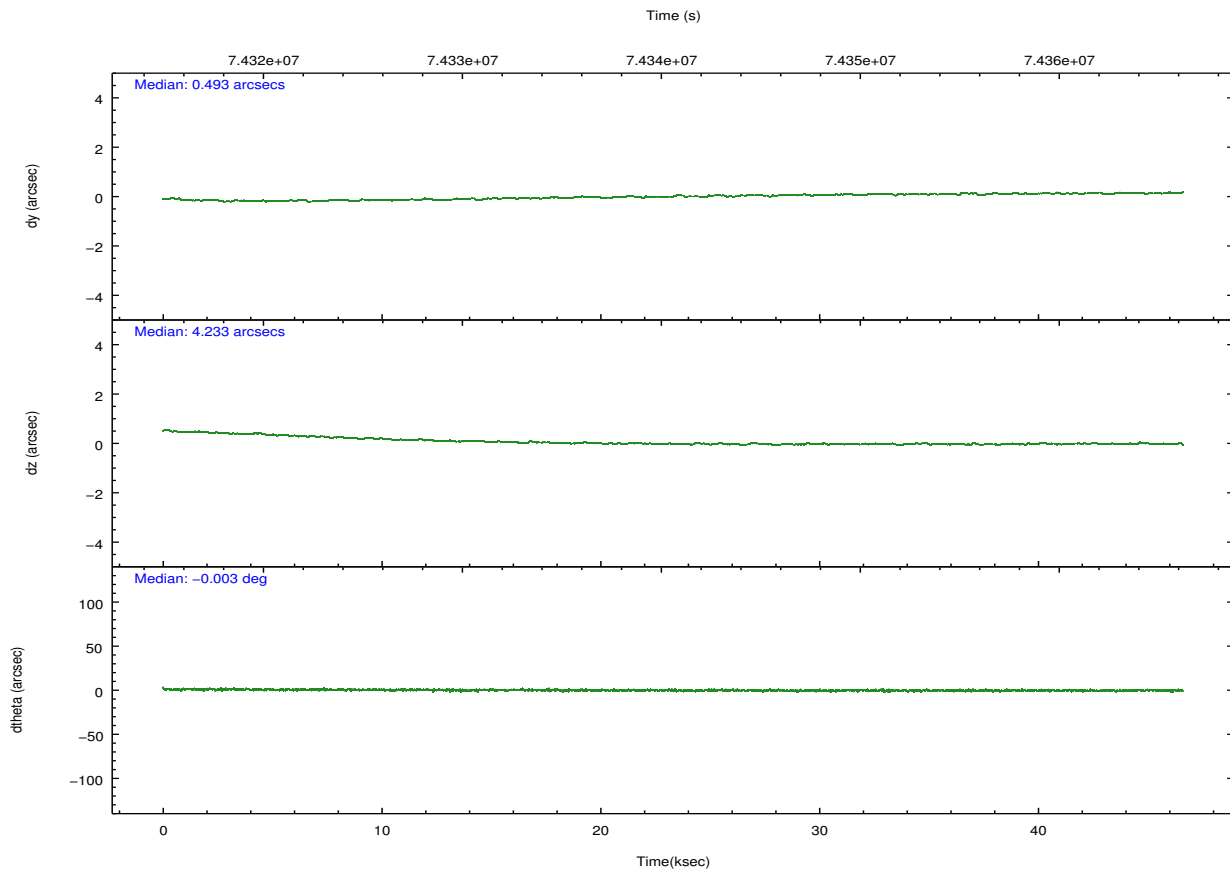
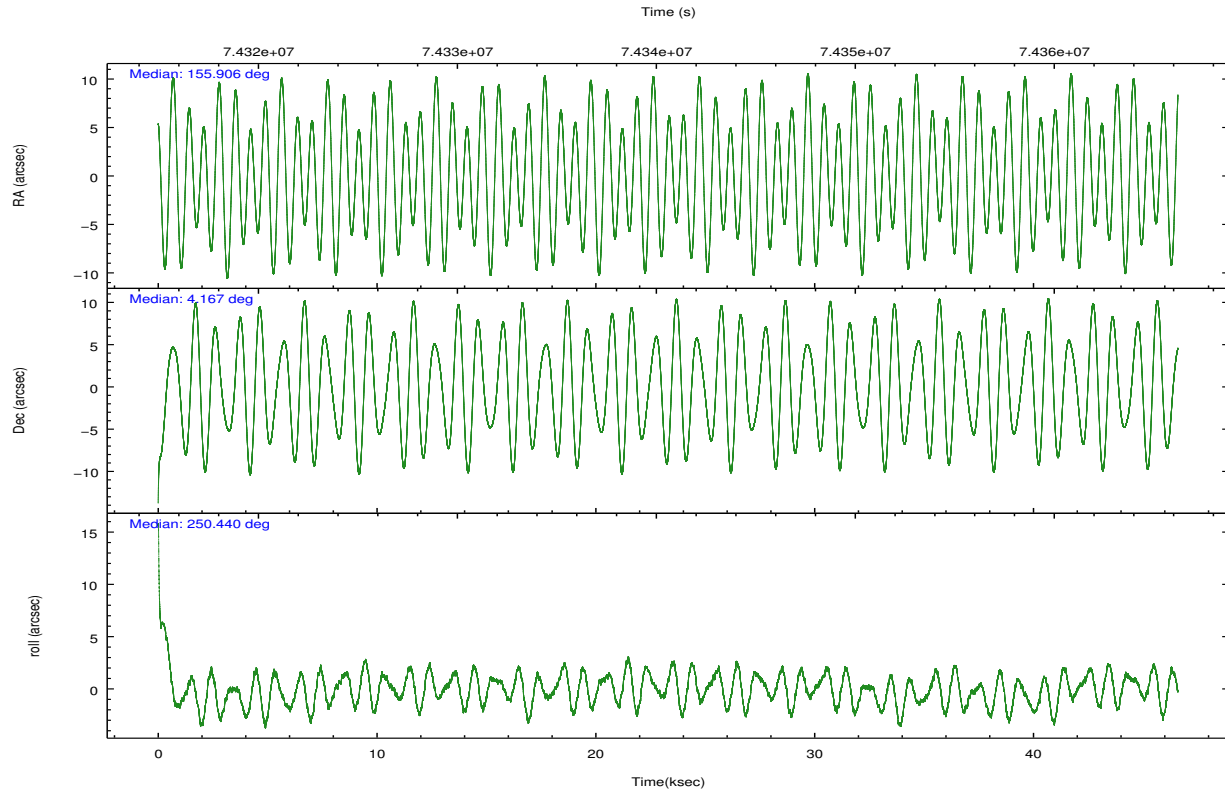
	ccd 0	ccd 1	ccd 2	ccd 3	ccd 6	ccd 7		ccd 0	ccd 1	ccd 2	ccd 3	ccd 6	ccd 7
level 1 events	311034	315066	340393	397751	346984	393896	grade 0 events	21433	21066	21922	72076	19494	18342
rejected events	275479	277733	304659	301910	312144	232822		6%	6%	6%	18%	5%	4%
rejected %	88%	88%	89%	75%	89%	59%	grade 1 events	174	198	227	476	206	372
								0%	0%	0%	0%	0%	0%
							grade 2 events	8879	8943	9064	14241	8342	34104
								2%	2%	2%	3%	2%	8%
							grade 3 events	4474	4595	3948	5626	4292	16047
								1%	1%	1%	1%	1%	4%
							grade 4 events	4117	4553	3951	5492	4117	15968
								1%	1%	1%	1%	1%	4%
							grade 5 events	10254	11244	9794	11317	12415	36796
								3%	3%	2%	2%	3%	9%
							grade 6 events	7411	8289	7197	8453	8184	87610
								2%	2%	2%	2%	2%	22%
							grade 7 events	254292	256178	284290	280070	289934	184657
								81%	81%	83%	70%	83%	46%

2.2 Compared Parameters

Parameter	Planned	Actual	Parameter	Planned	Actual
Instrument	ACIS	ACIS	Obspar format version number	7	7
Detector	ACIS-012367	ACIS-012367	Obspar file type	PREDICTED	ACTUAL
Grating	NONE	NONE	Obspar update status	NONE	UPDATED
Data mode	FAINT	FAINT	Number of optional ACIS chips dropped	0	0
Observation mode	POINTING	POINTING	On-chip summing requested	N	N
[deg] Pointing RA	155.901119	155.9059567350714	Subarray requested	NONE	NONE
[deg] Pointing Dec	4.193916	4.166743619991738	Alternating exposures requested	N	N
[deg] Pointing Roll	250.236968	250.4453039418323	[s] Primary exposure time	0.000000	3.2
[mm] SIM focus pos	-0.782348	-0.7809083437167272			
[mm] SIM defocus	0	0.001439871863259334			
[mm] SIM translation stage pos	-226.292463	-226.2858628250985			
[mm] SIM translation stage offset	-7.3	-7.306590177831225			
[s] Observation start time (MET)	74317388.184000	74316025.43733899			
Observation start date	2000-05-10T03:42:04	2000-05-10T03:20:25			
[s] Observation end time (MET)	74363888.184000	74364875.40163399			
Observation end date	2000-05-10T16:37:04	2000-05-10T16:54:35			
Read mode	TIMED	TIMED			

2.3 Aspect





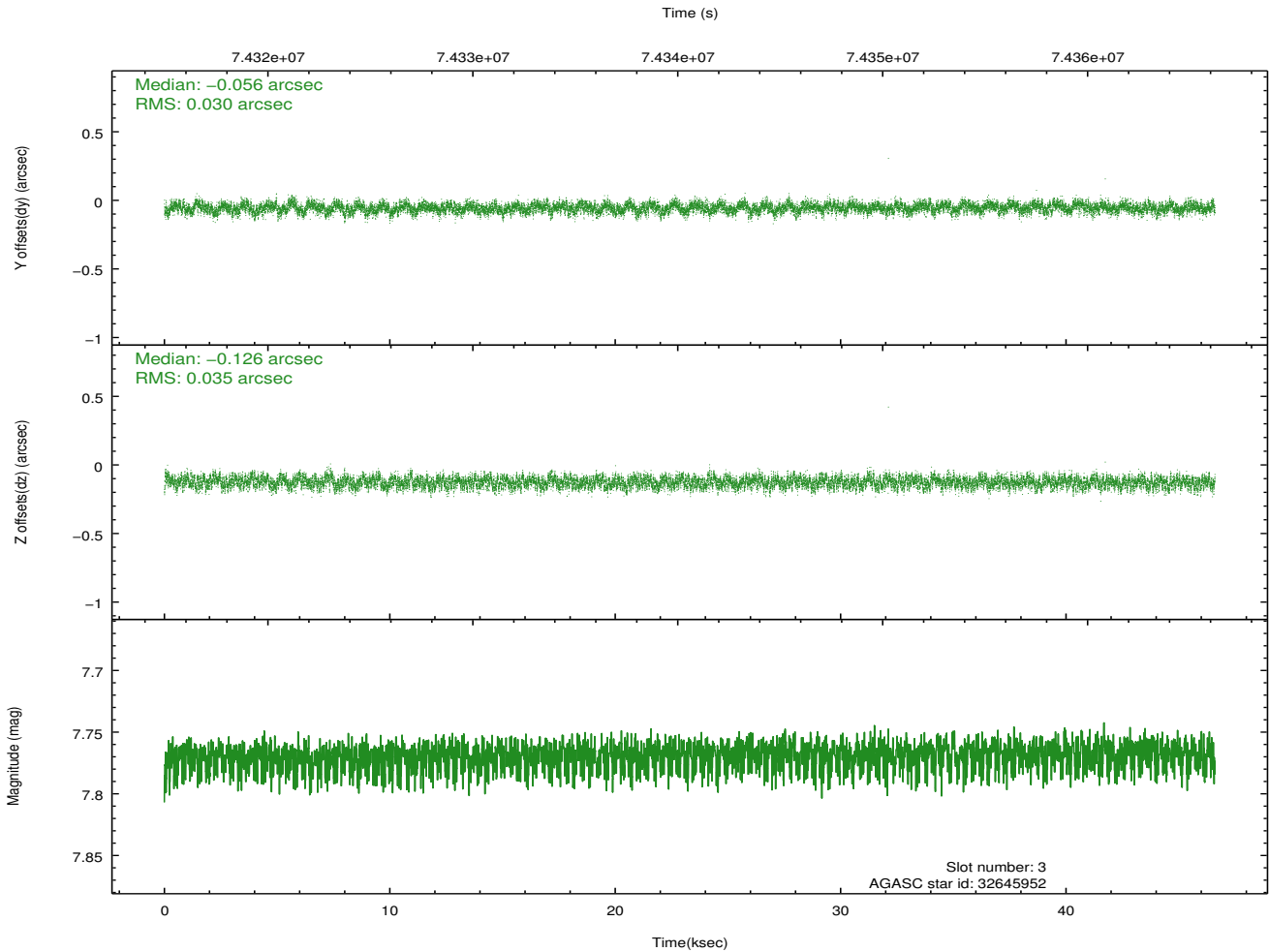
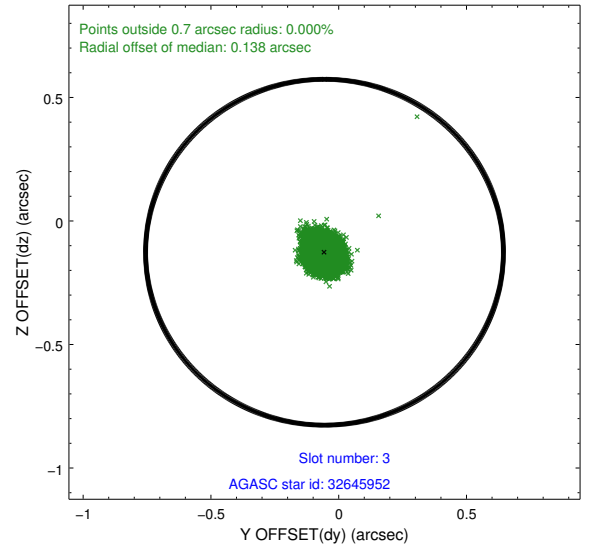
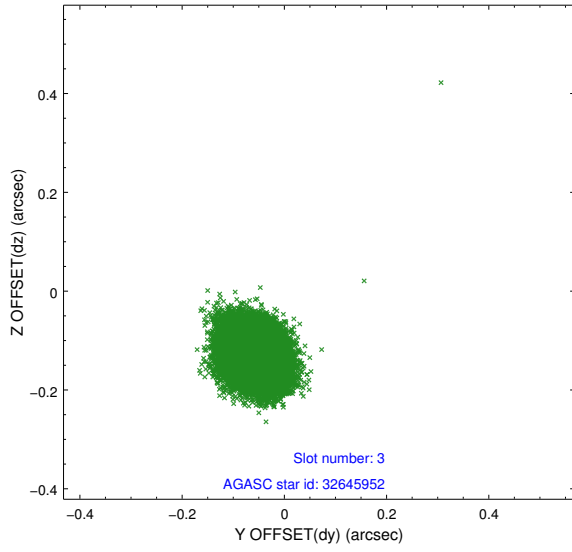
Slot Statistics

slot	status	id	mag	n_pts	med_dy	med_dz	dr1	dr2	ra	dec	mean_y	mean_z
0	FID	ACIS-I-2	7.17	11362	-0.030	-0.048	0.009	0.016	0.000000	0.000000	-755.32	-983.08
1	FID	ACIS-I-4	7.15	11361	-0.043	0.039	0.006	0.012	0.000000	0.000000	2158.66	923.18
2	FID	ACIS-I-5	7.22	11365	-0.029	0.078	0.009	0.014	0.000000	0.000000	-1808.81	920.06
3	GUIDE	32645952	7.77	22726	-0.056	-0.126	0.049	0.078	155.433347	4.300135	207.39	-1709.42
4	GUIDE	32640752	8.22	22729	-0.176	0.037	0.063	0.105	156.390412	4.571973	-1875.59	1192.34
5	GUIDE	32644472	9.33	22716	-0.148	0.002	0.090	0.147	156.216766	4.518464	-1483.30	671.34
6	GUIDE	32647616	9.97	22707	0.094	-0.154	0.147	0.231	155.156922	4.116499	1164.78	-2420.54
7	GUIDE	32649344	9.87	22705	0.285	0.243	0.107	0.174	156.308388	3.482277	1915.80	2244.31

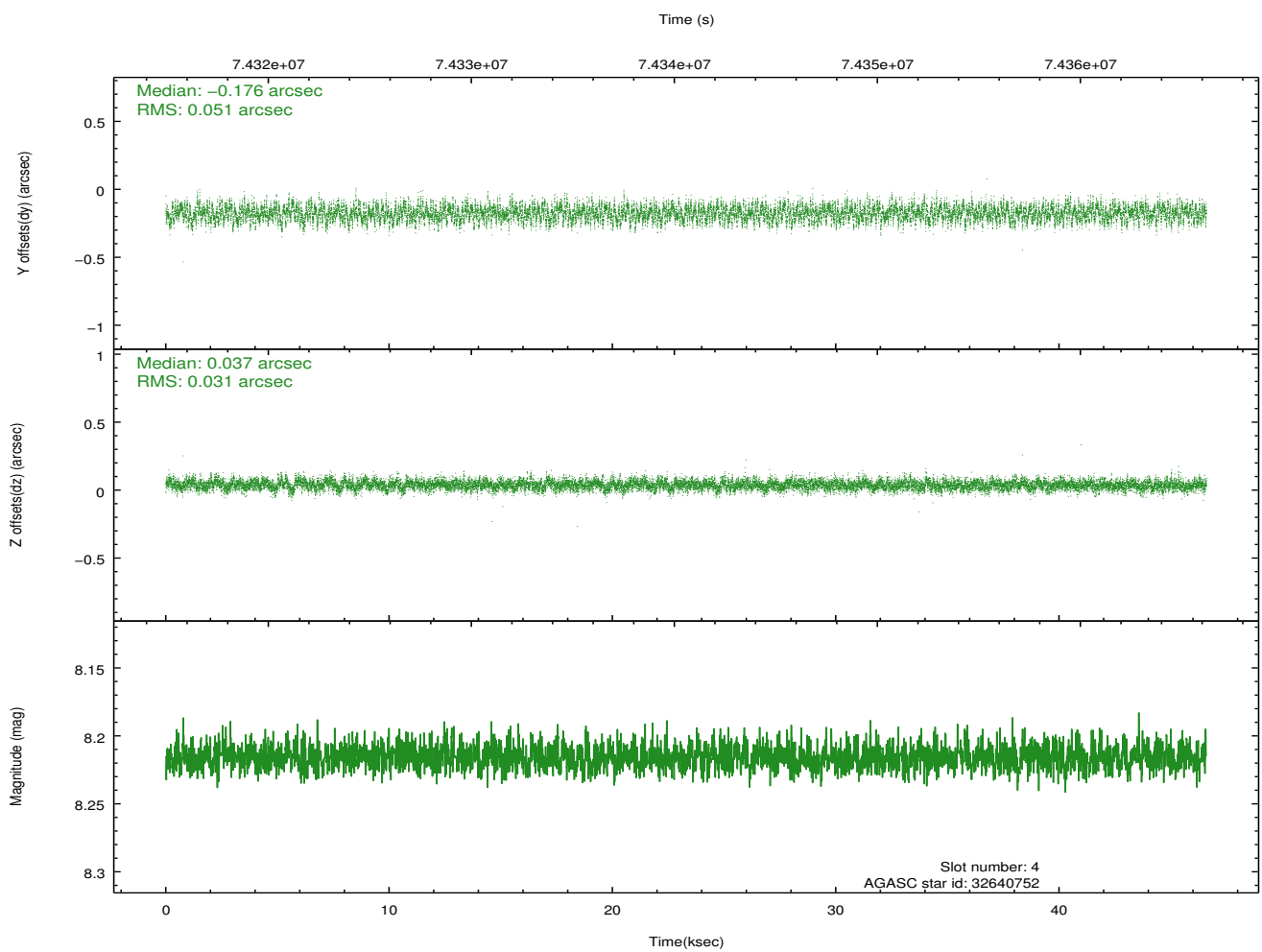
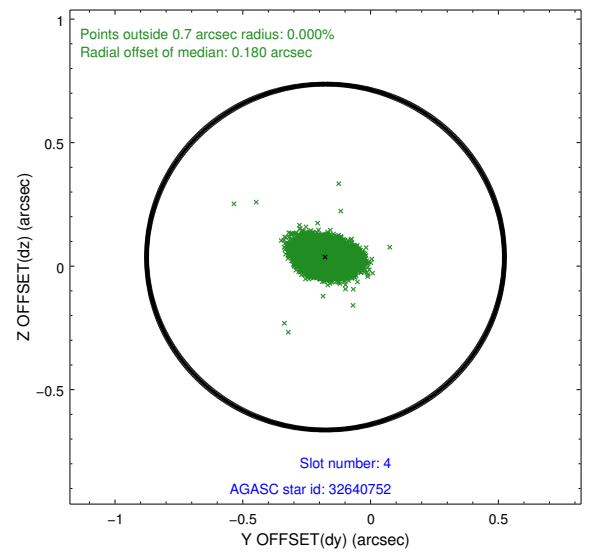
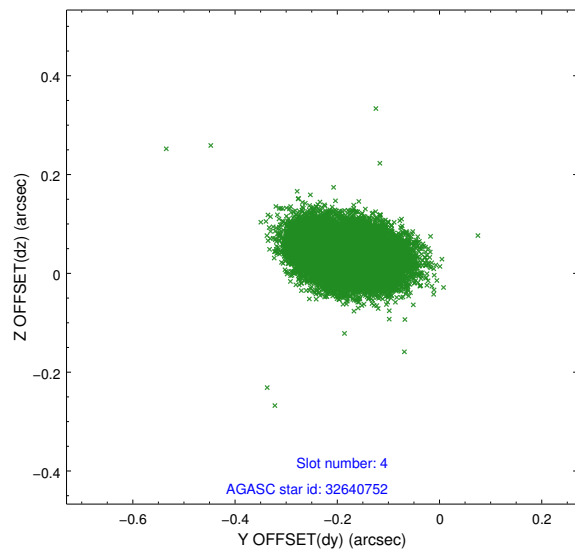
∞

2.4 Star Slots

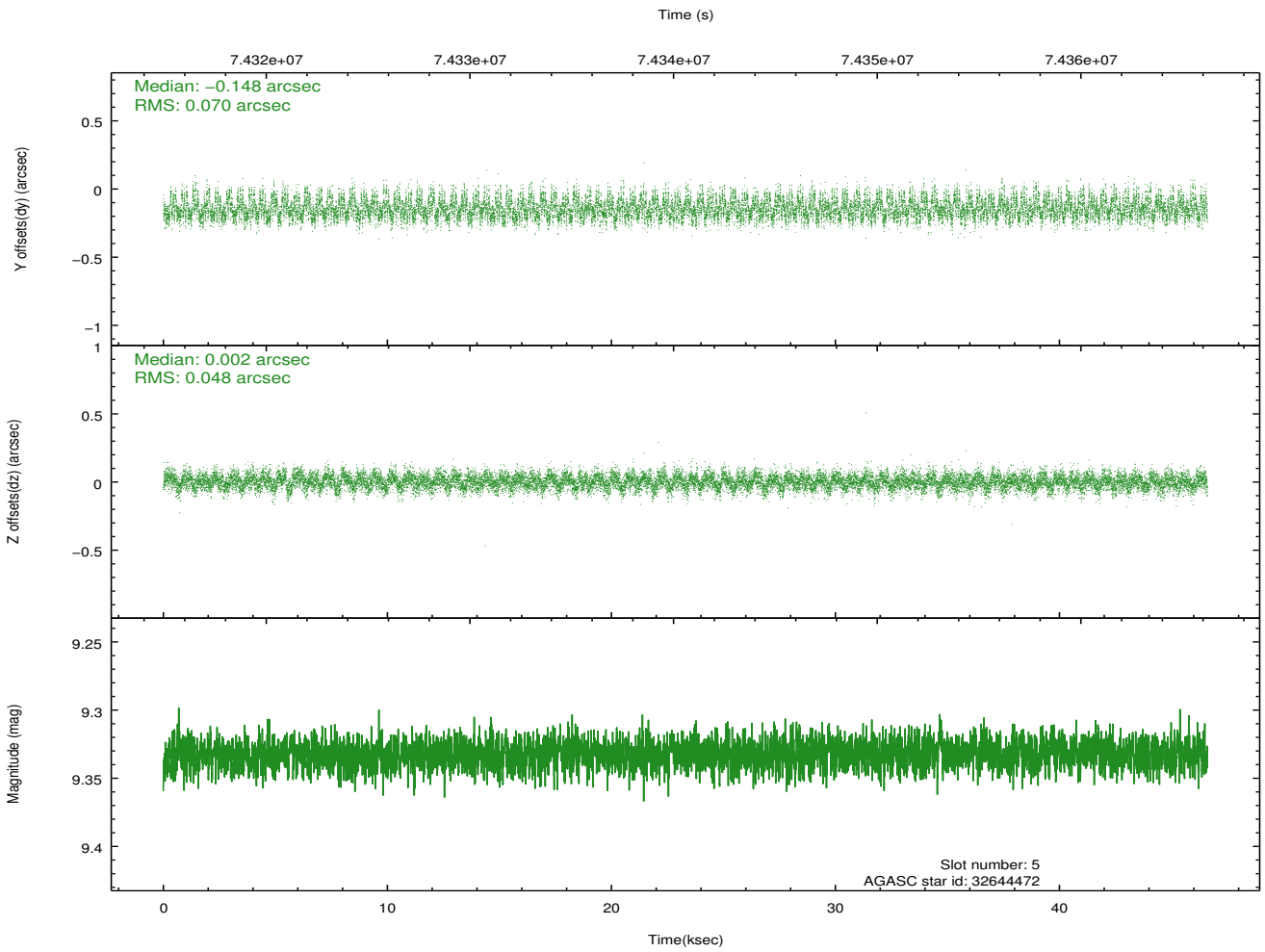
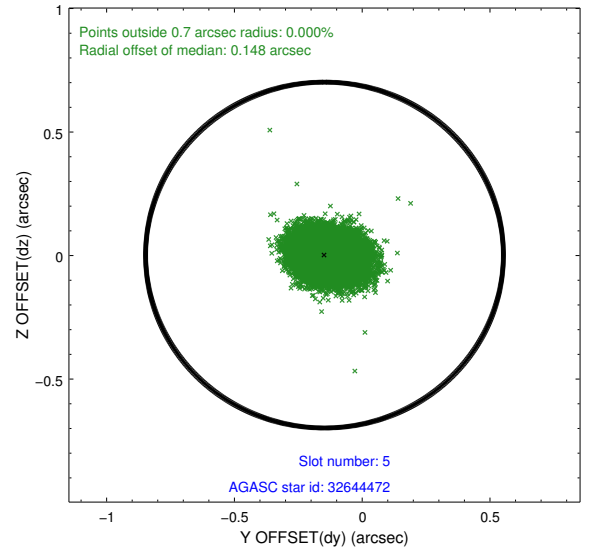
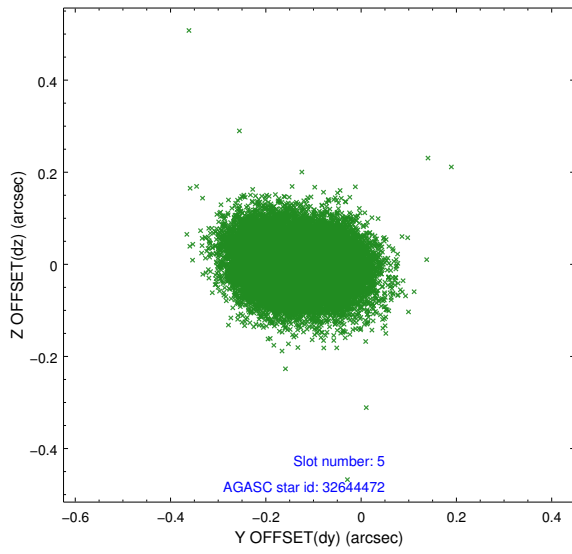
2.4.1 Slot 3



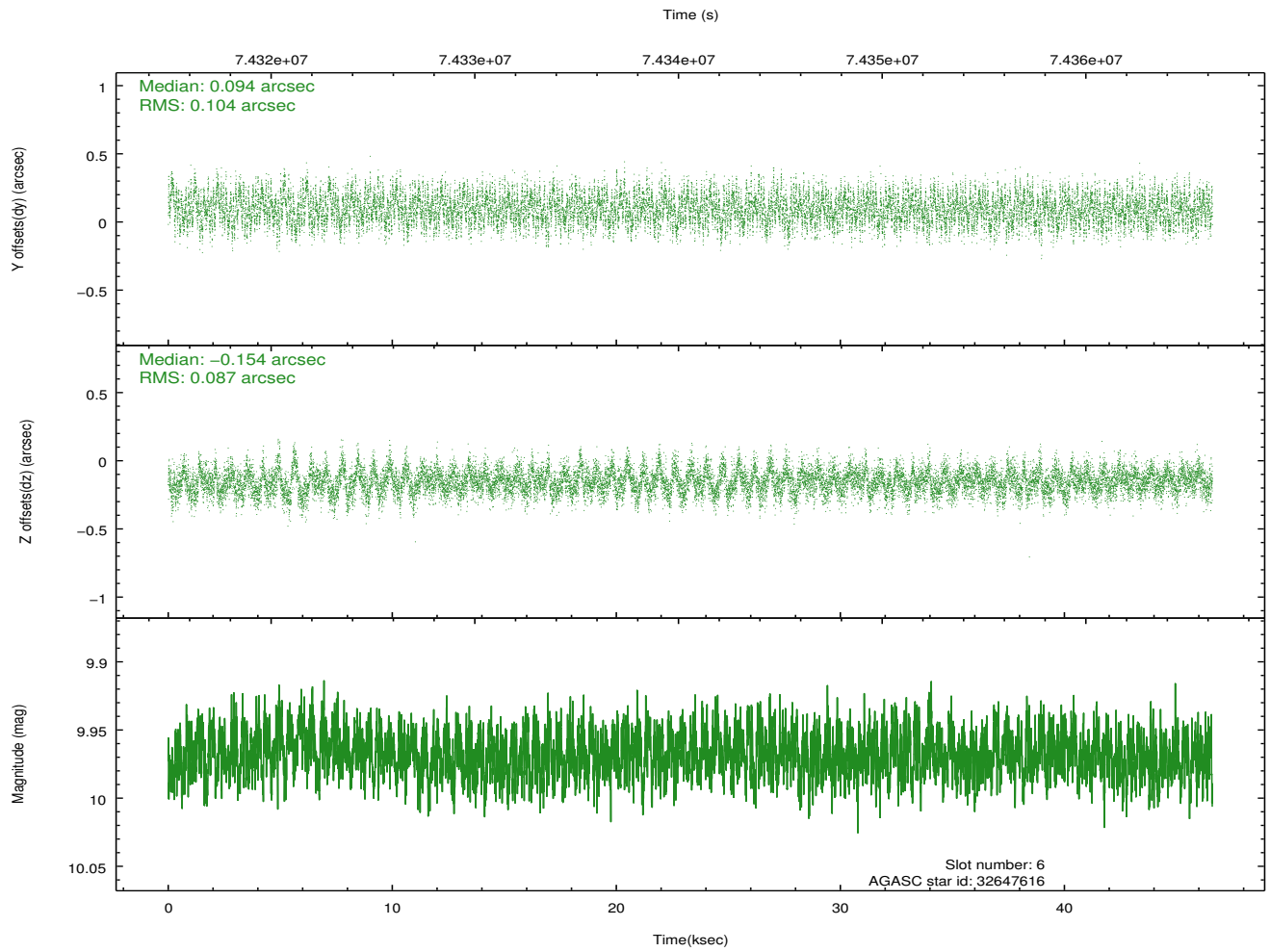
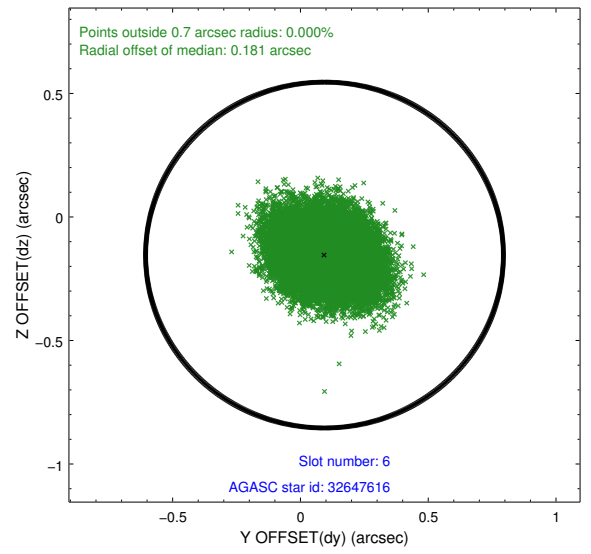
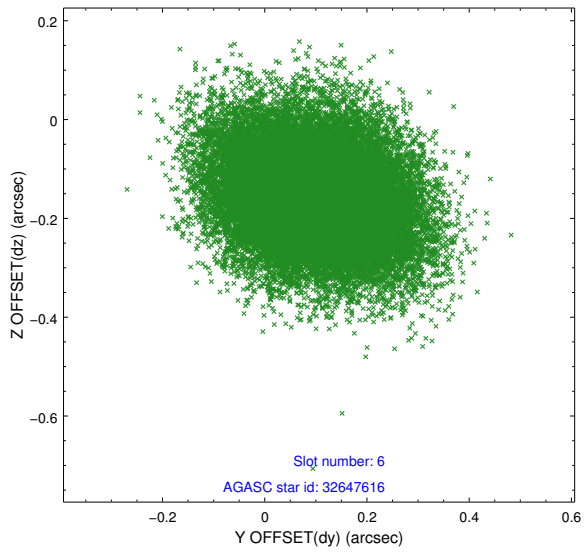
2.4.2 Slot 4



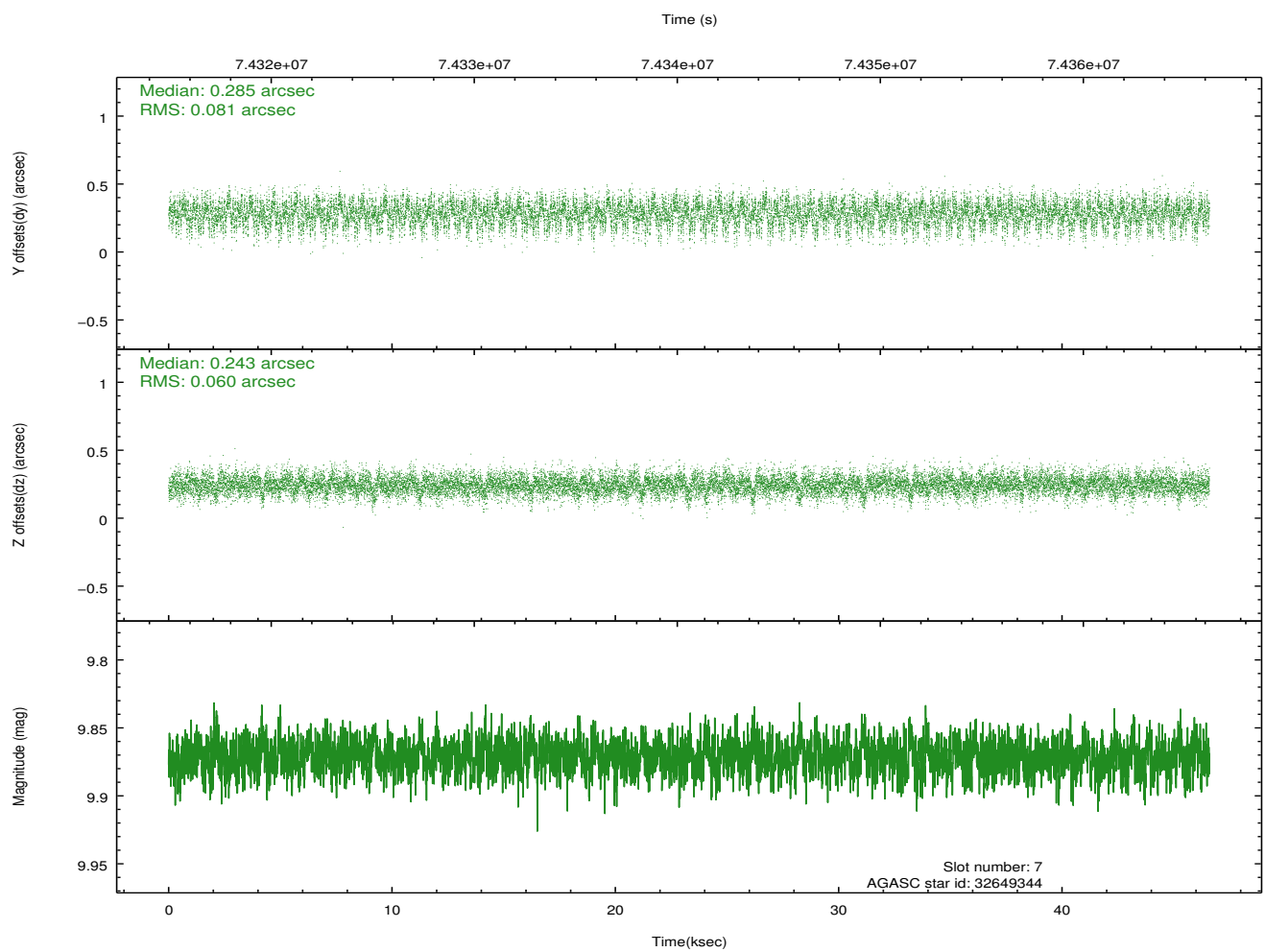
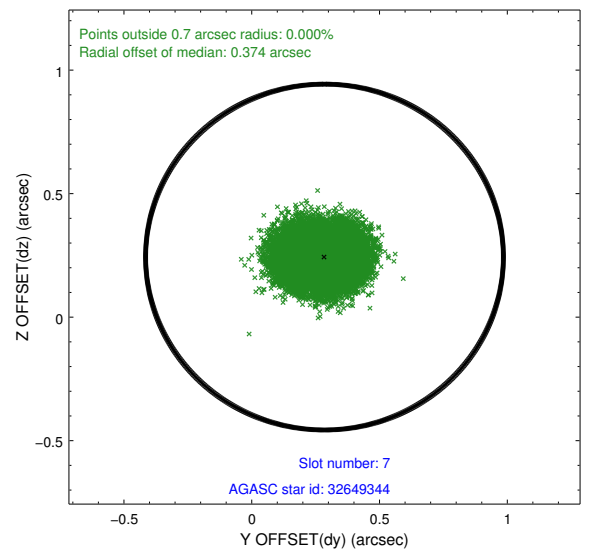
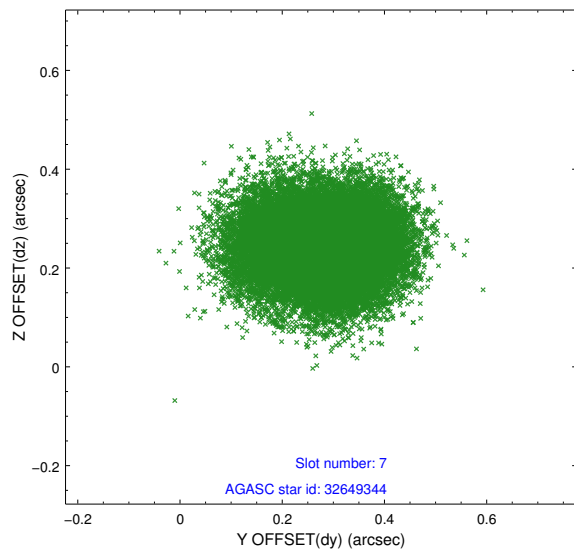
2.4.3 Slot 5



2.4.4 Slot 6

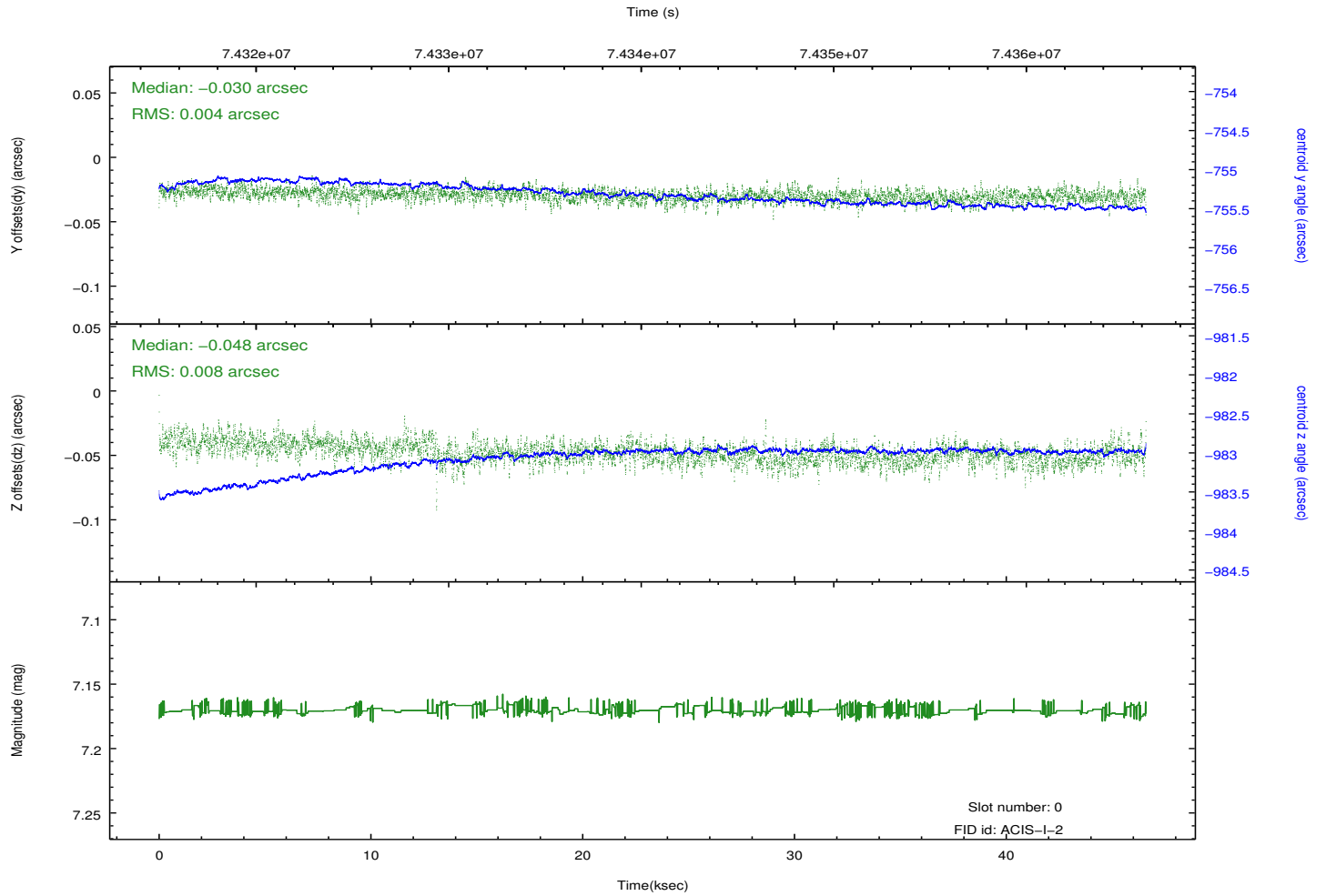
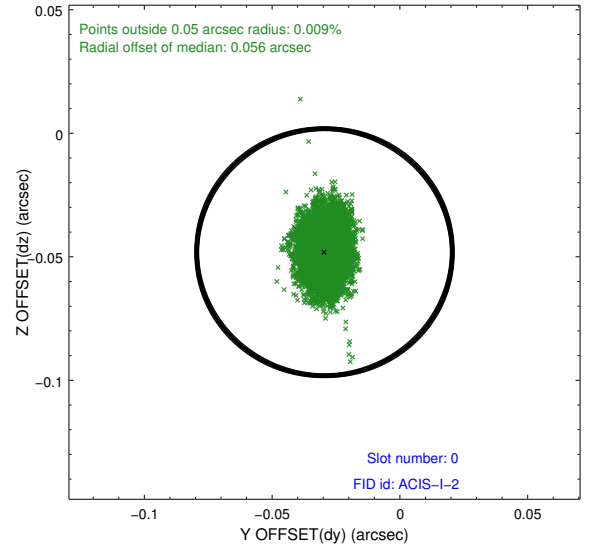
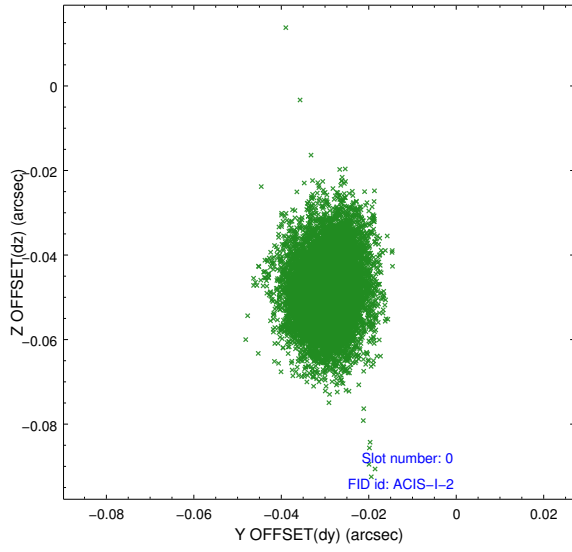


2.4.5 Slot 7

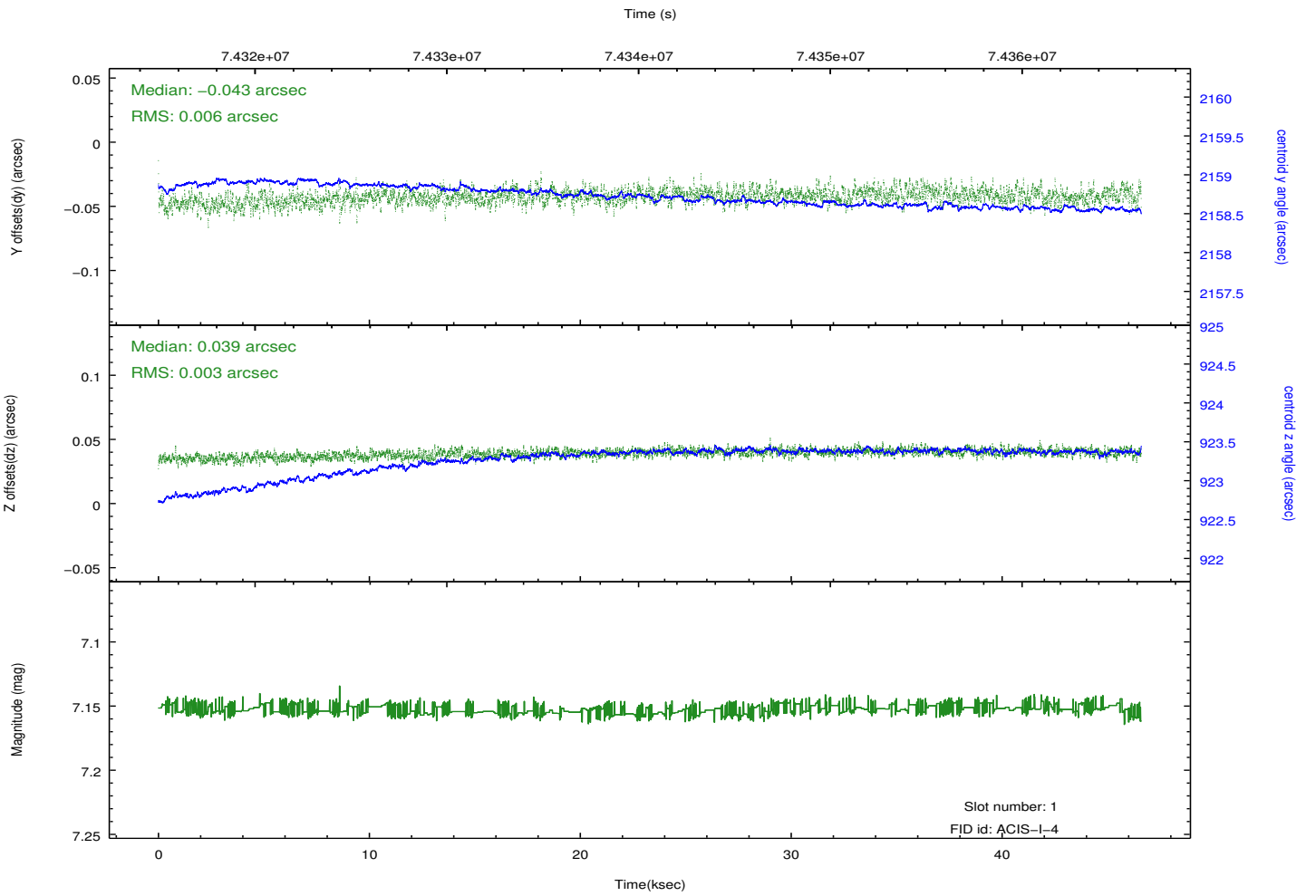
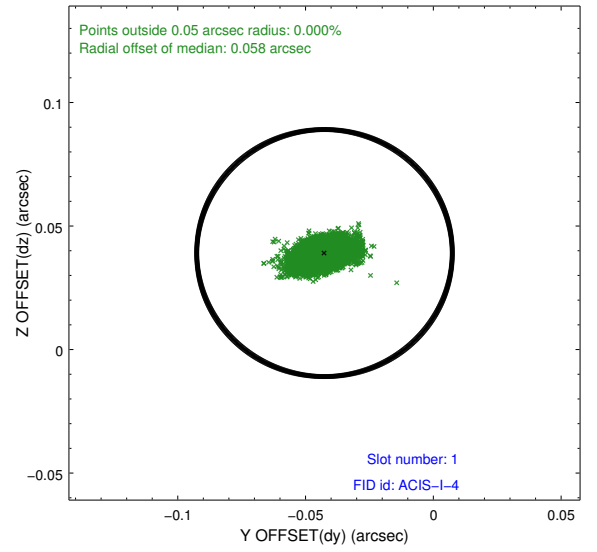
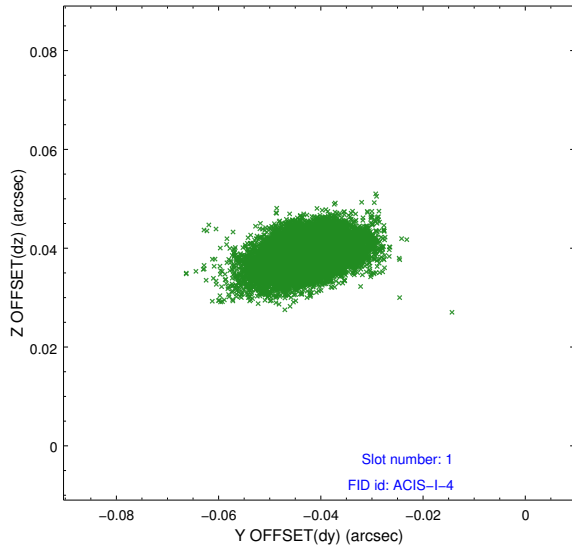


2.5 FID Slots

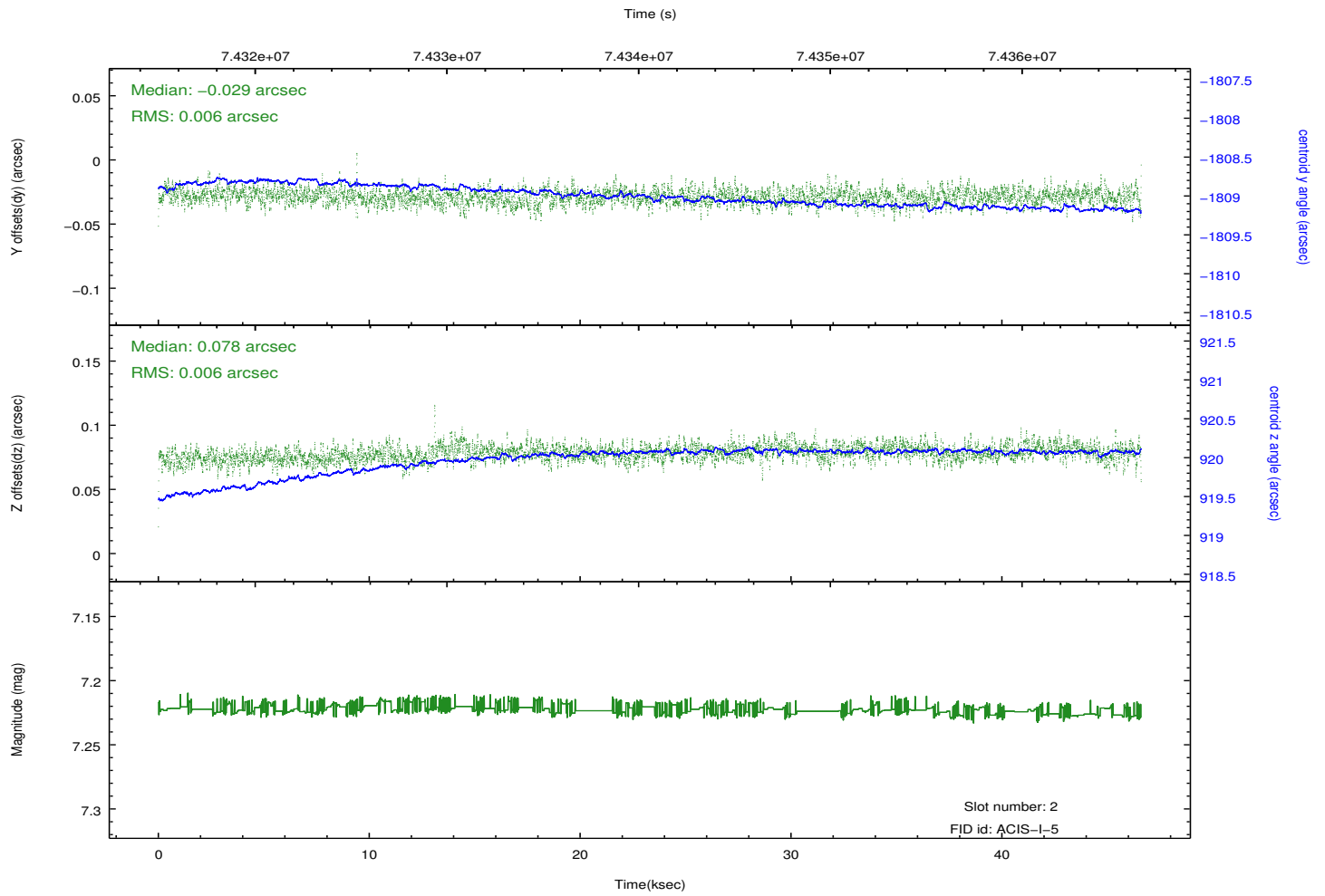
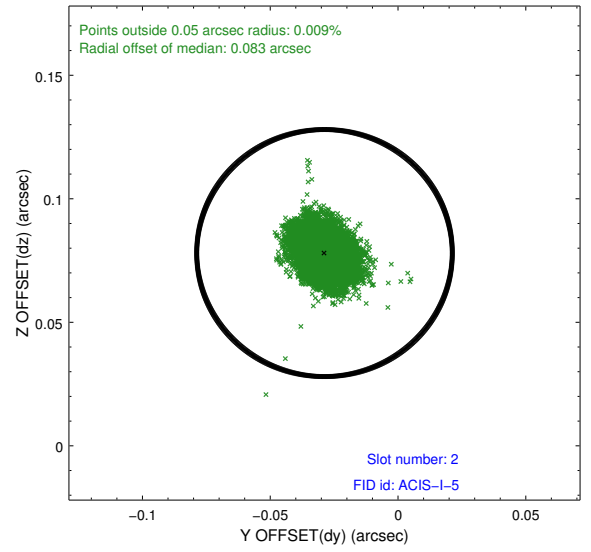
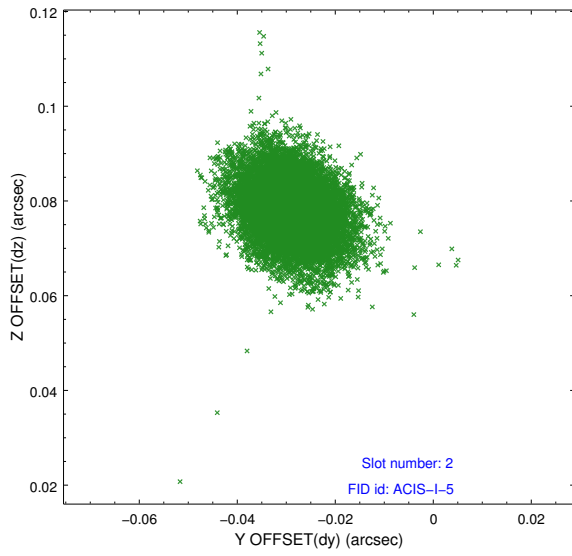
2.5.1 Slot 0



2.5.2 Slot 1



2.5.3 Slot 2



A Summary

A.1 Status

V&V Scientist	Jen Lauer
V&V Date (YYYY-MM-DD)	2012.08.30
V&V Edition	1
V&V Disposition and Status	OK
V&V Charge Time	46.595

A.2 Comments