

V&V Reference Report

L2 ASCDS Version : 8.4.4

Observation 9509 - L2 Version 2
Chandra X-Ray Center

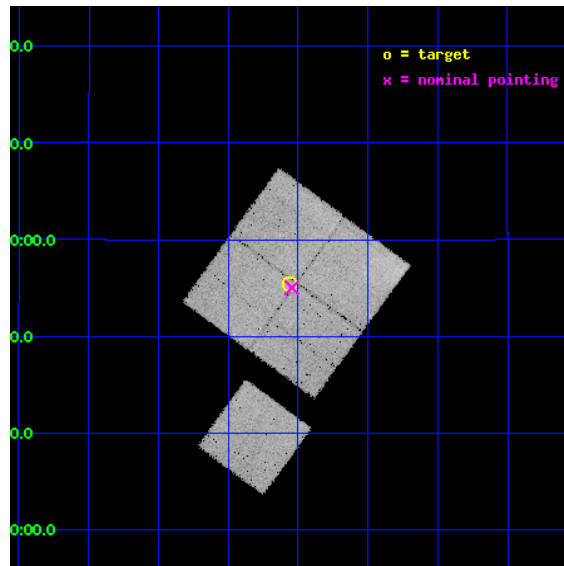
L2 Processing Date : May 12 2012

Contents

1	Front	2
2	OBI	3
2.1	OBI	3
2.1.1	Images	3
2.1.2	Bias	3
2.1.3	Parameters	4
2.1.4	Events	4
2.2	Compared Parameters	5
2.3	Aspect	6
2.4	Star Slots	9
2.4.1	Slot 3	9
2.4.2	Slot 4	10
2.4.3	Slot 5	11
2.4.4	Slot 6	12
2.4.5	Slot 7	13
2.5	FID Slots	14
2.5.1	Slot 0	14
2.5.2	Slot 1	15
2.5.3	Slot 2	16
A	Summary	17
A.1	Status	17
A.2	Comments	17

1 Front

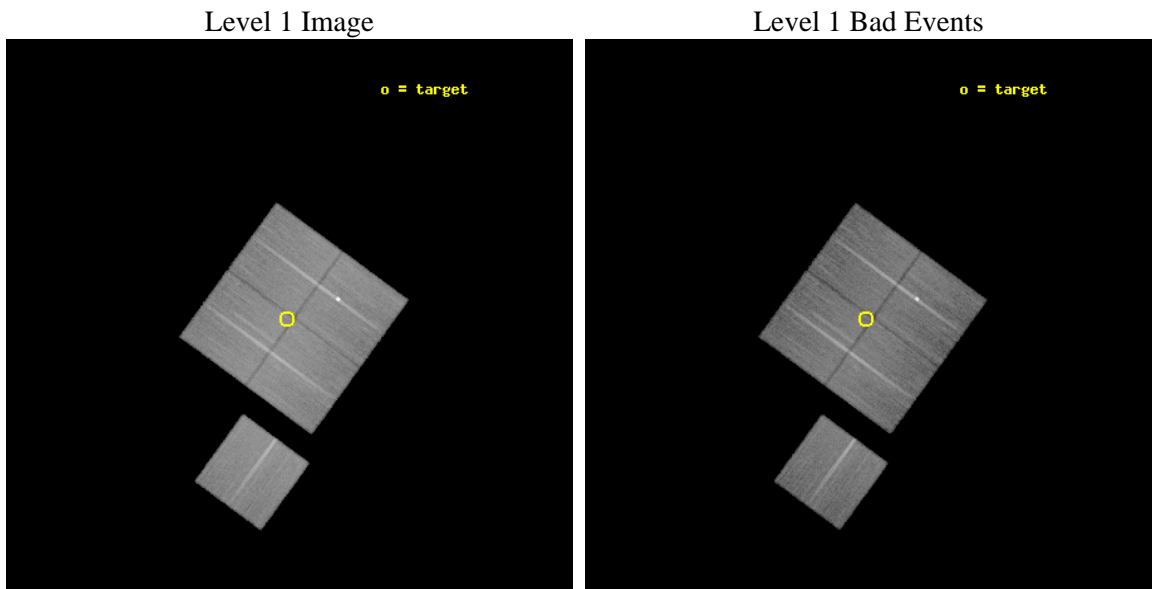
seq_num	600650	Sequence number
obs_id	9509	Observation id
title	Ram Pressure Stripping in the Virgo Cluster - M86 Followup	Proposa
observer	Dr. Stephen Murray	Principal investigator
object	M86 tail	Source name
dtycycle	0	
cycle	P	events from which exps? Prim/Second/Both
ra_targ	186.76607	Observer's specified target RA [deg]
dec_targ	12.92352	Observer's specified target Dec [deg]
ra_nom	186.76112237596	Nominal RA [deg]
dec_nom	12.91702043396	Nominal Dec [deg]
roll_nom	216.14502823754	Nominal Roll [deg]
revision	2	Processing version of data
ontime	26151.60020113	Sum of GTIs [s]
livetime	25809.910291974	Livetime [s]
ontime0	26151.60020113	Sum of GTIs [s]
ontime1	26145.318180382	Sum of GTIs [s]
ontime2	26145.318239987	Sum of GTIs [s]
ontime3	26151.60020113	Sum of GTIs [s]
ontime6	26148.459180892	Sum of GTIs [s]
l2events	124588	Number of level 2 events



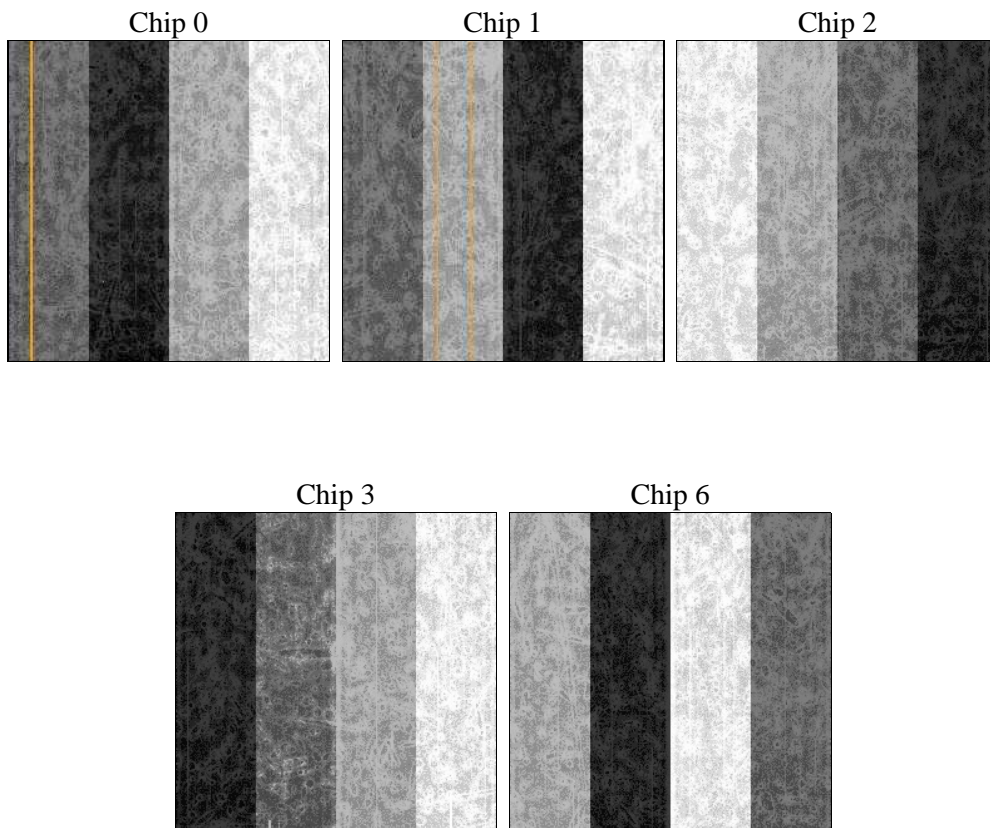
2 OBI

2.1 OBI

2.1.1 Images



2.1.2 Bias



2.1.3 Parameters

obi_num	0	Obi number	sched_exp_time	25975.000000	[s] Scheduled observation exposure time
ascdsver	8.4.4	Processing system revision	ontime	26151.60020113	Sum of GTIs [s]
caldbver	4.4.9	 	ontime0	26151.60020113	Sum of GTIs [s]
date	2012-05-13T00:28:07	Date and time of file creation	ontime1	26145.318180382	Sum of GTIs [s]
revision	2	Processing version of data	ontime2	26145.318239987	Sum of GTIs [s]
			ontime3	26151.60020113	Sum of GTIs [s]
			ontime6	26148.459180892	Sum of GTIs [s]
			l1events	1083090	Number of level 1 events

2.1.4 Events

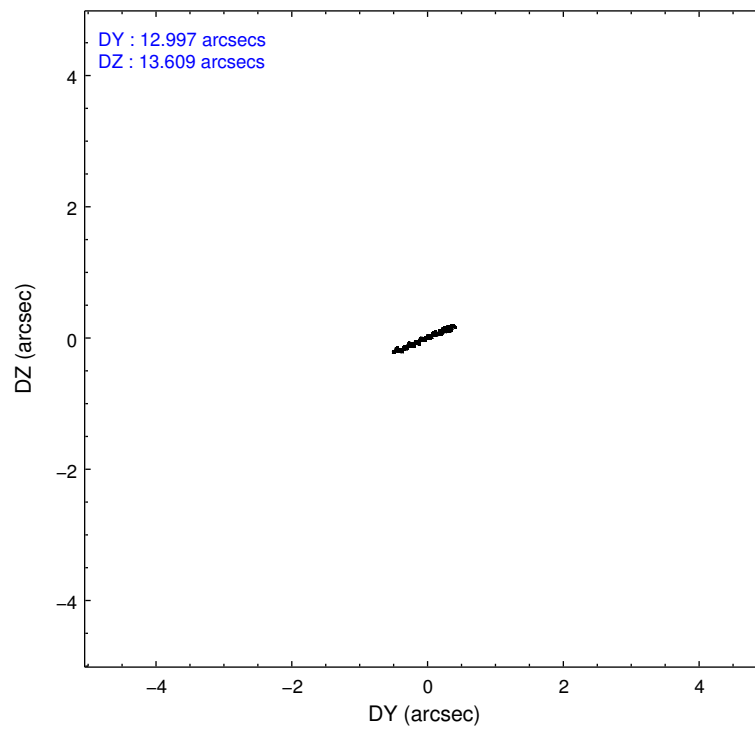
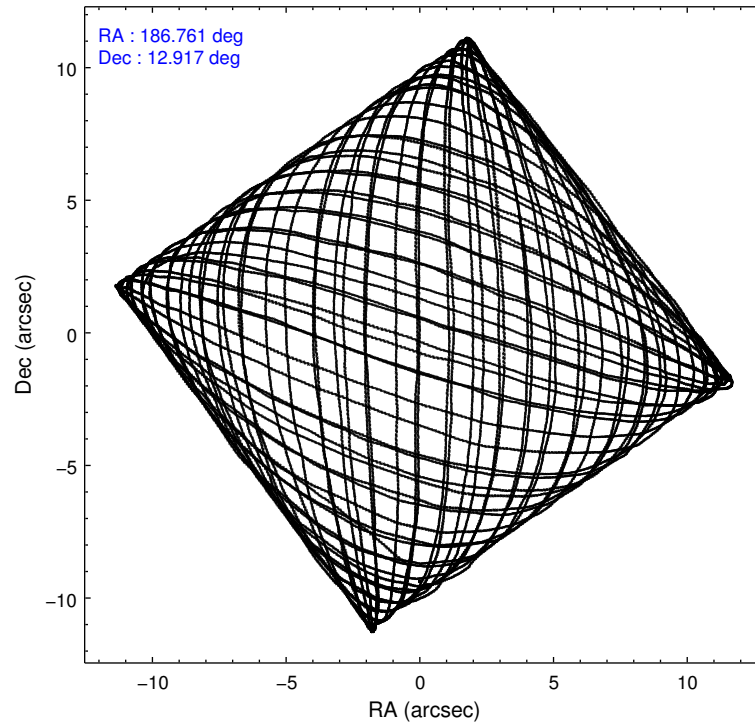
	ccd 0	ccd 1	ccd 2	ccd 3	ccd 6
level 1 events	227329	203327	225371	212976	214087
rejected events	184009	173099	198289	186933	188093
rejected %	80%	85%	87%	87%	87%

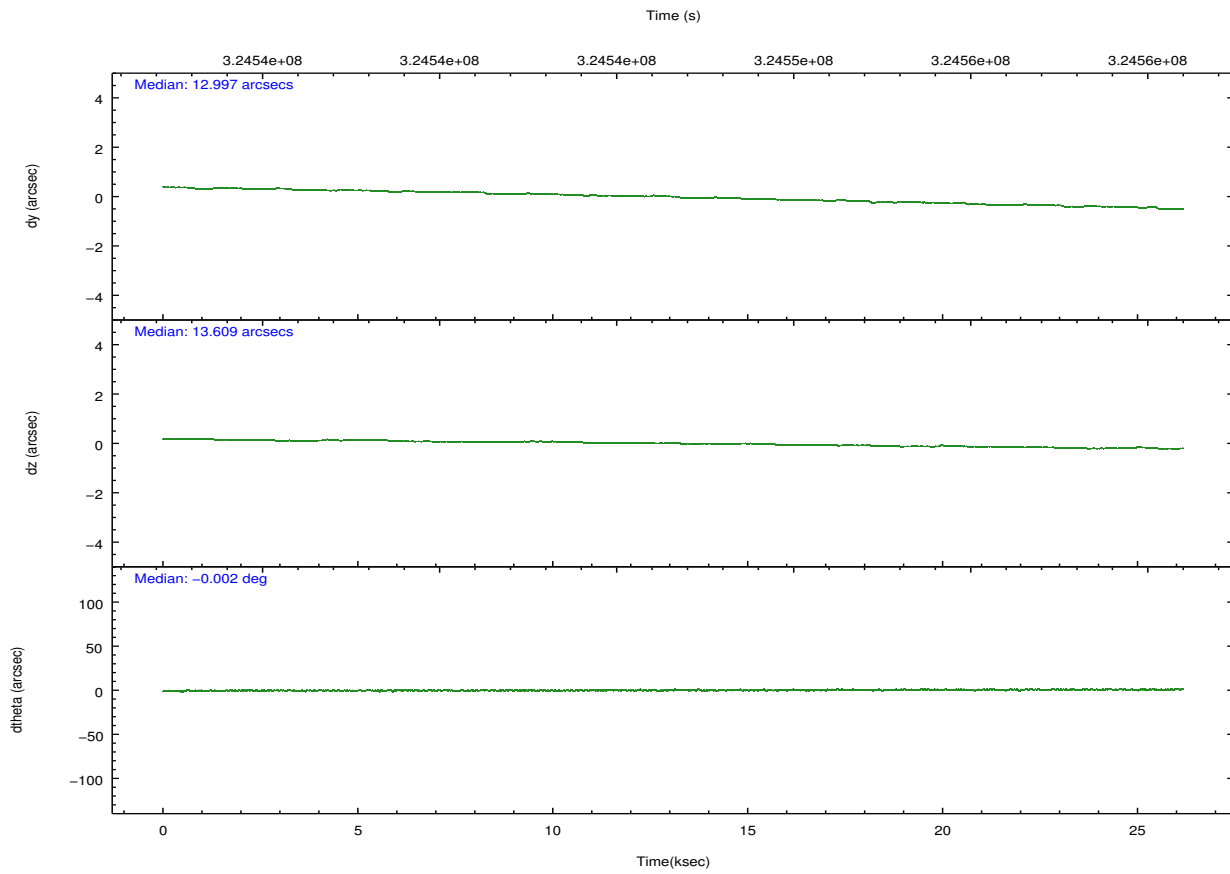
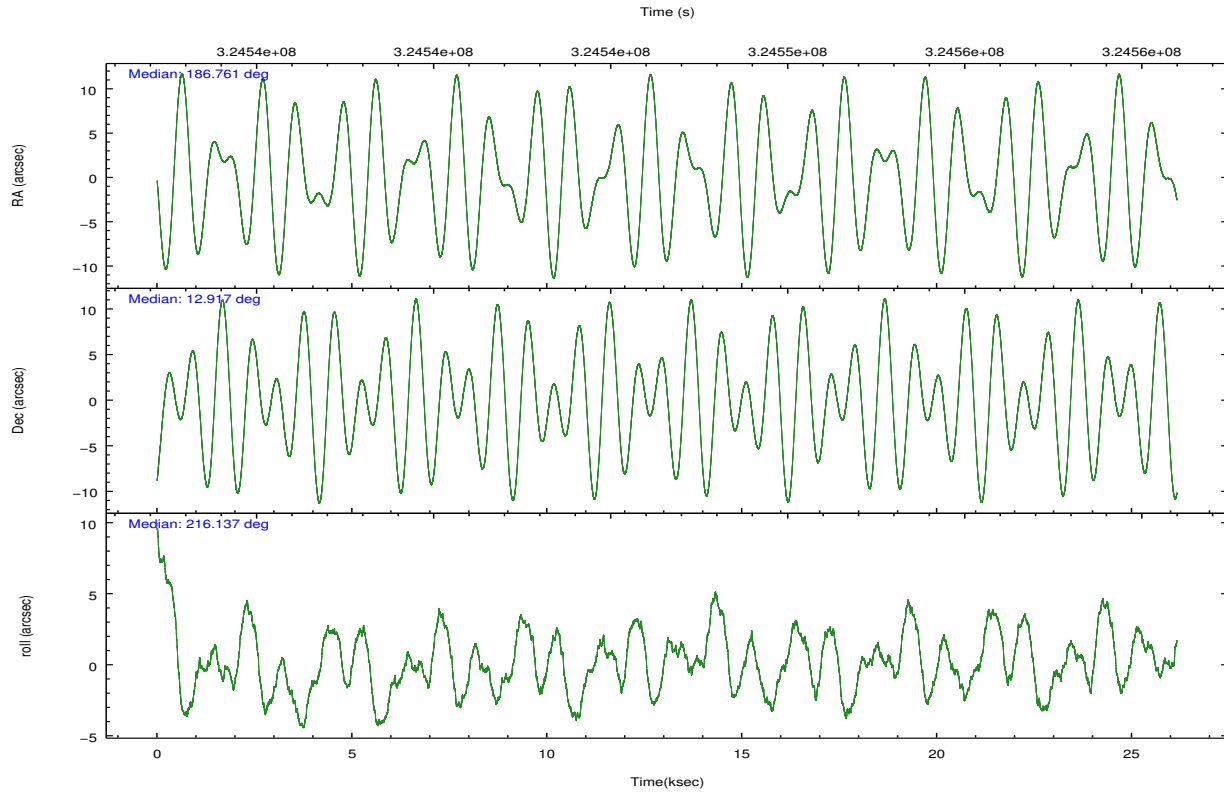
	ccd 0	ccd 1	ccd 2	ccd 3	ccd 6
grade 0 events	19893	14062	12858	11987	11306
	8%	6%	5%	5%	5%
grade 1 events	166	141	150	151	121
	0%	0%	0%	0%	0%
grade 2 events	6317	5955	5514	5088	5176
	2%	2%	2%	2%	2%
grade 3 events	2675	2692	2425	2438	2458
	1%	1%	1%	1%	1%
grade 4 events	2501	2666	2412	2405	2421
	1%	1%	1%	1%	1%
grade 5 events	7522	8272	7080	8630	8387
	3%	4%	3%	4%	3%
grade 6 events	11987	4895	3919	4156	4664
	5%	2%	1%	1%	2%
grade 7 events	176268	164644	191013	178121	179554
	77%	80%	84%	83%	83%

2.2 Compared Parameters

Parameter	Planned	Actual	Parameter	Planned	Actual
Instrument	ACIS	ACIS	Obspar format version number	7	7
Detector	ACIS-01236	ACIS-01236	Obspar file type	PREDICTED	ACTUAL
Grating	NONE	NONE	Obspar update status	NONE	UPDATED
Data mode	VFAINT	VFAINT	CCD I0 on	Y	Y
Observation mode	POINTING	POINTING	CCD I1 on	Y	Y
[deg] Pointing RA	186.772436	186.7611223759561	CCD I2 on	Y	Y
[deg] Pointing Dec	12.942225	12.91702043396009	CCD I3 on	Y	Y
[deg] Pointing Roll	215.933806	216.1450282375382	CCD S0 on	N	N
[mm] SIM focus pos	-0.782348	-0.7809083437167272	CCD S1 on	N	N
[mm] SIM defocus	0	0.001439871863259334	CCD S2 on	O1	Y
[mm] SIM translation stage pos	-233.592463	-233.5874344608287	CCD S3 on	N	N
[mm] SIM translation stage offset	0	-0.005018542100998502	CCD S4 on	N	N
[s] Observation start time (MET)	324533695.184000	324532685.43993	CCD S5 on	N	N
Observation start date	2008-04-14T04:13:50	2008-04-14T03:58:05	Number of optional ACIS chips dropped	0	0
[s] Observation end time (MET)	324559670.184000	324560362.49127	On-chip summing requested	N	N
Observation end date	2008-04-14T11:26:45	2008-04-14T11:39:22	Subarray requested	NONE	NONE
Read mode	TIMED	TIMED	Alternating exposures requested	N	N
			[s] Primary exposure time	0.000000	3.1

2.3 Aspect



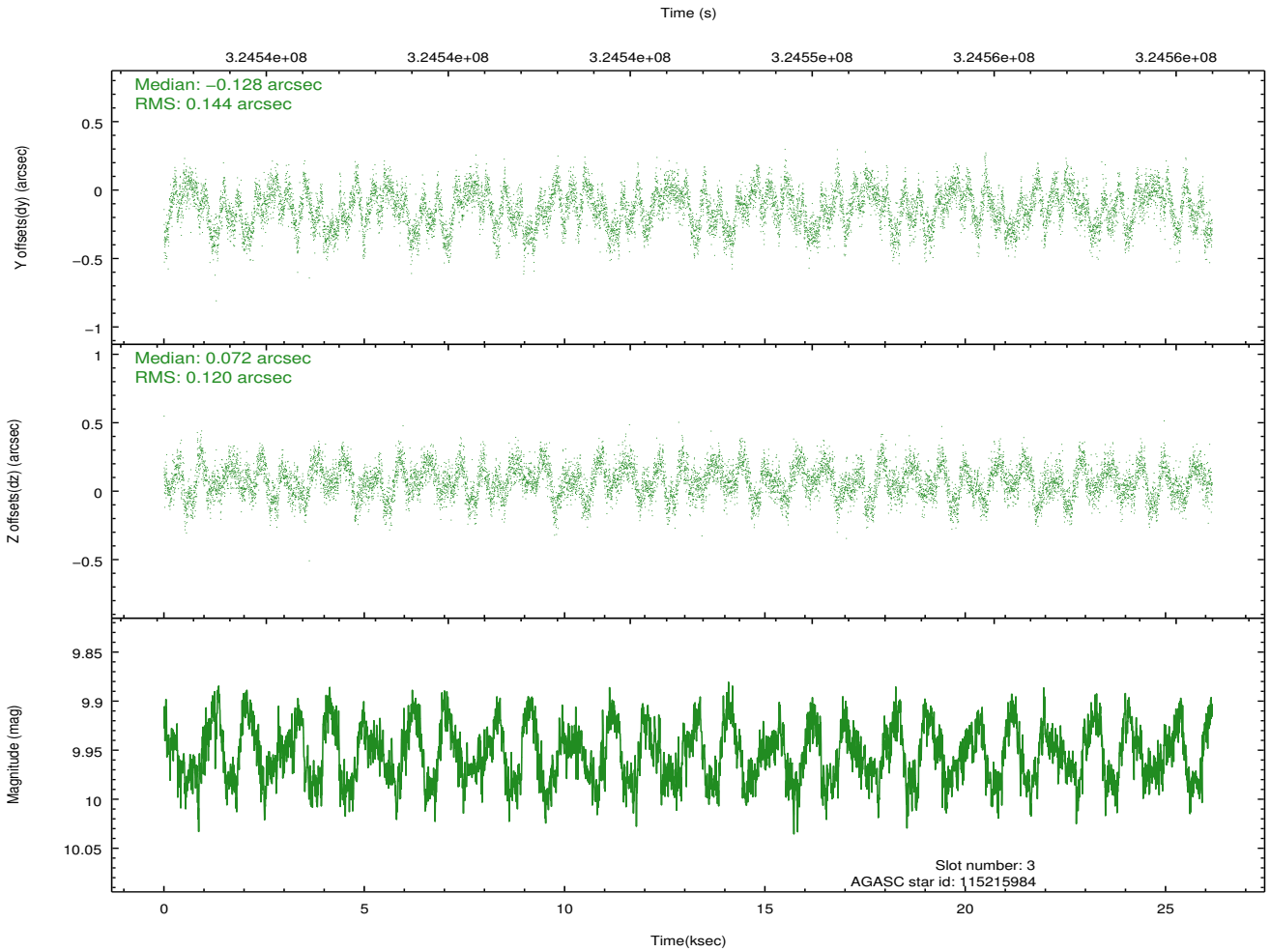
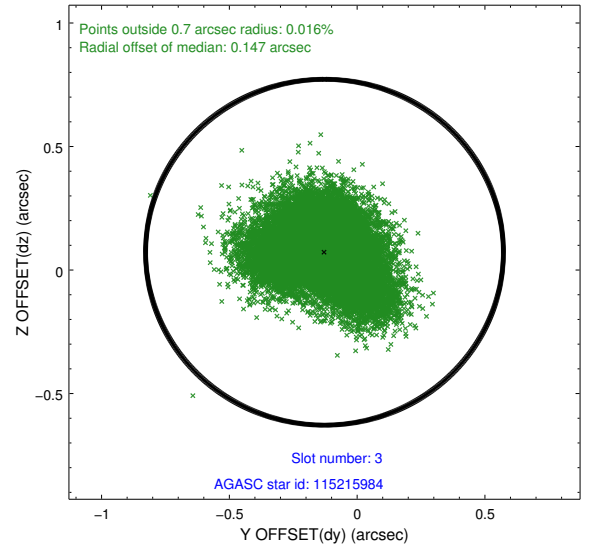
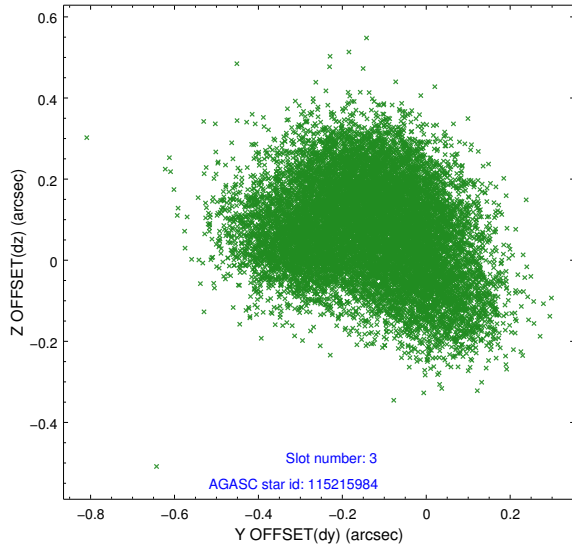


Slot Statistics

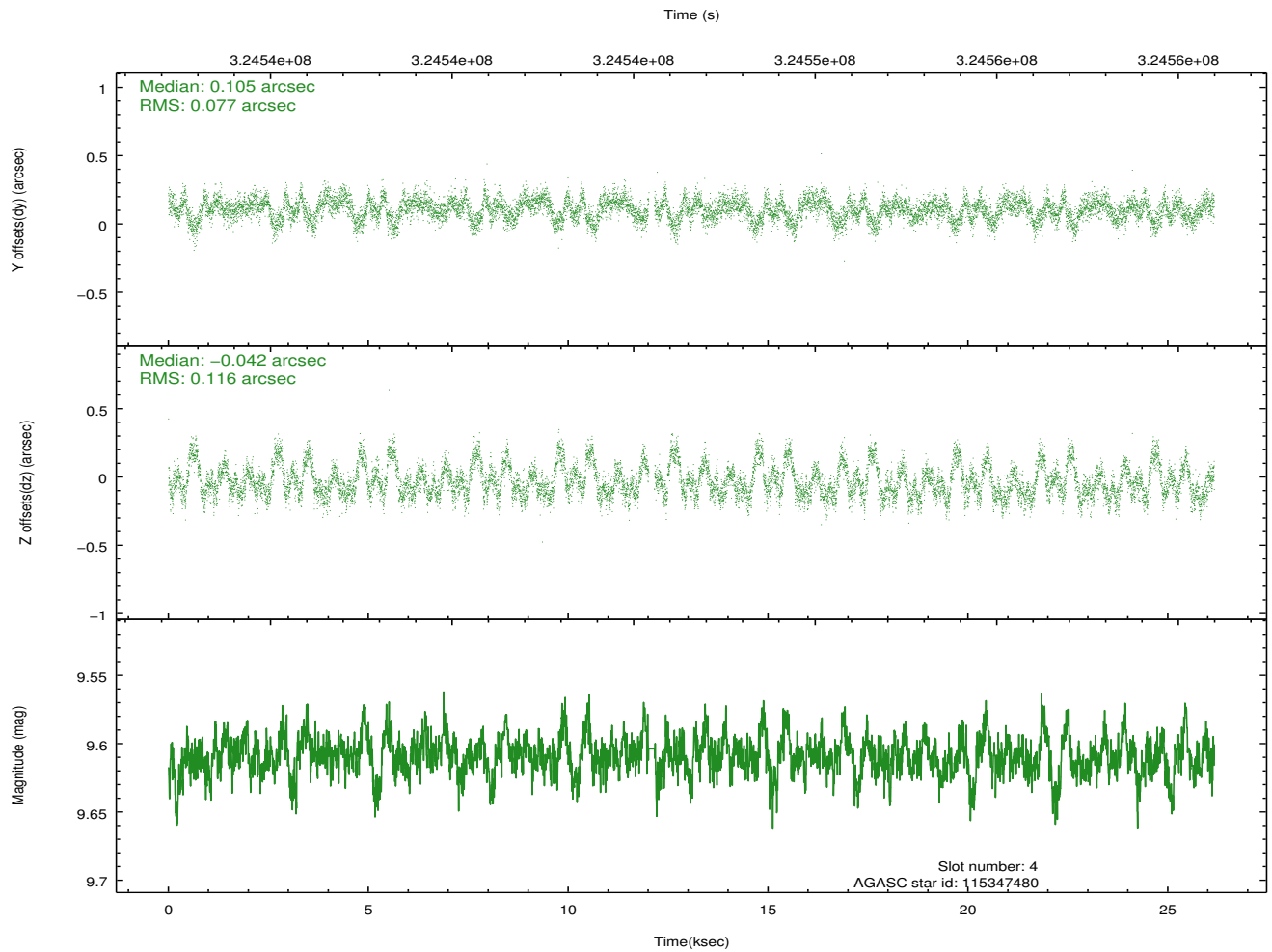
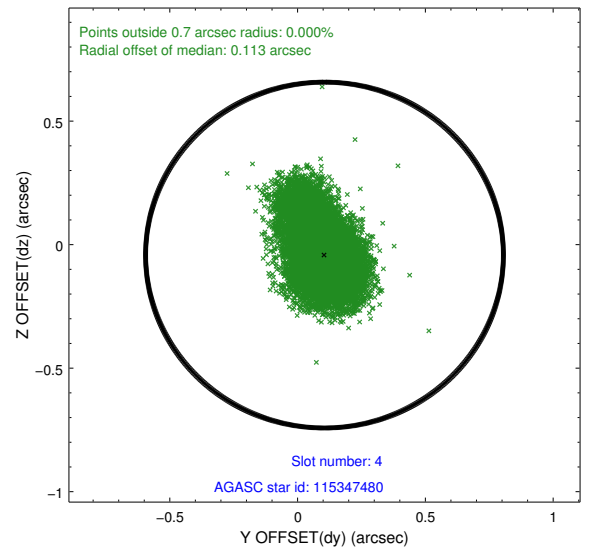
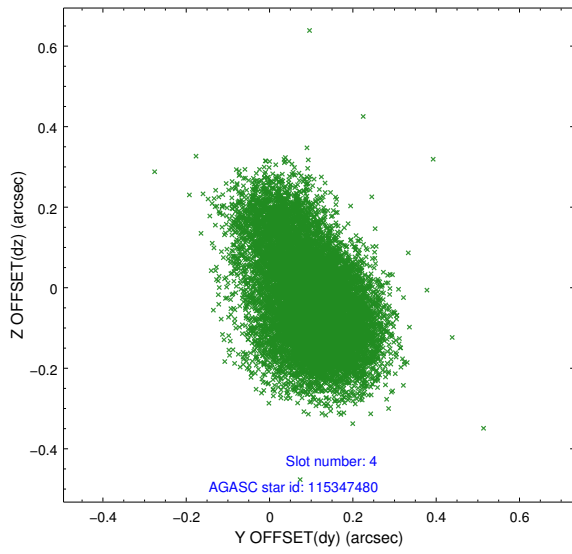
slot	status	id	mag	n_pts	med_dy	med_dz	dr1	dr2	ra	dec	mean_y	mean_z
0	FID	ACIS-I-1	7.07	6381	0.019	0.030	0.011	0.019	0.000000	0.000000	926.58	-837.13
1	FID	ACIS-I-5	7.06	6381	-0.182	0.039	0.009	0.014	0.000000	0.000000	-1821.69	1060.30
2	FID	ACIS-I-6	7.07	6380	0.071	0.002	0.010	0.015	0.000000	0.000000	392.04	1704.90
3	GUIDE	115215984	9.95	12744	-0.128	0.072	0.203	0.314	186.134733	12.875031	1952.96	-1119.20
4	GUIDE	115347480	9.61	12677	0.105	-0.042	0.143	0.254	186.668576	13.310410	-482.52	-1286.82
5	GUIDE	115348424	9.49	12750	-0.022	-0.007	0.115	0.183	187.199498	13.087929	-1520.81	453.12
6	GUIDE	114954440	9.17	12748	0.061	0.005	0.127	0.194	186.915066	12.219118	1120.62	2403.25
7	GUIDE	114952792	9.49	12746	-0.000	-0.039	0.117	0.185	187.070263	12.344747	414.67	2356.08

2.4 Star Slots

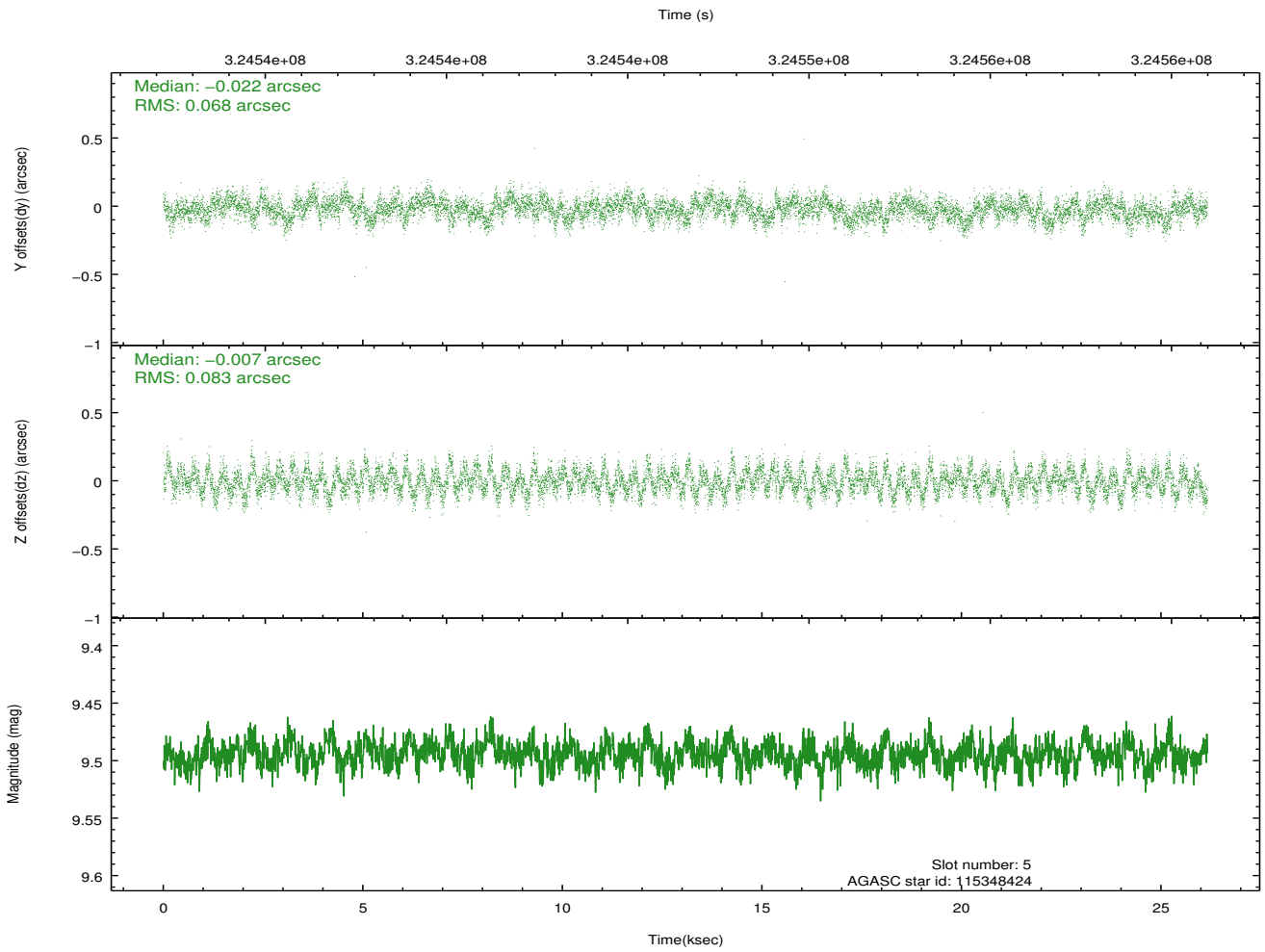
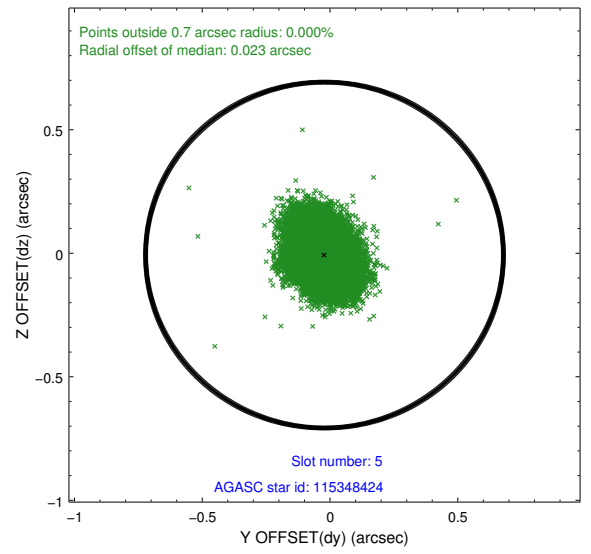
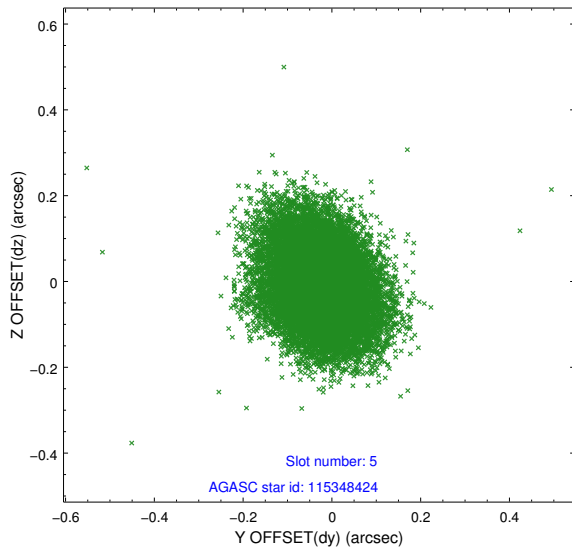
2.4.1 Slot 3



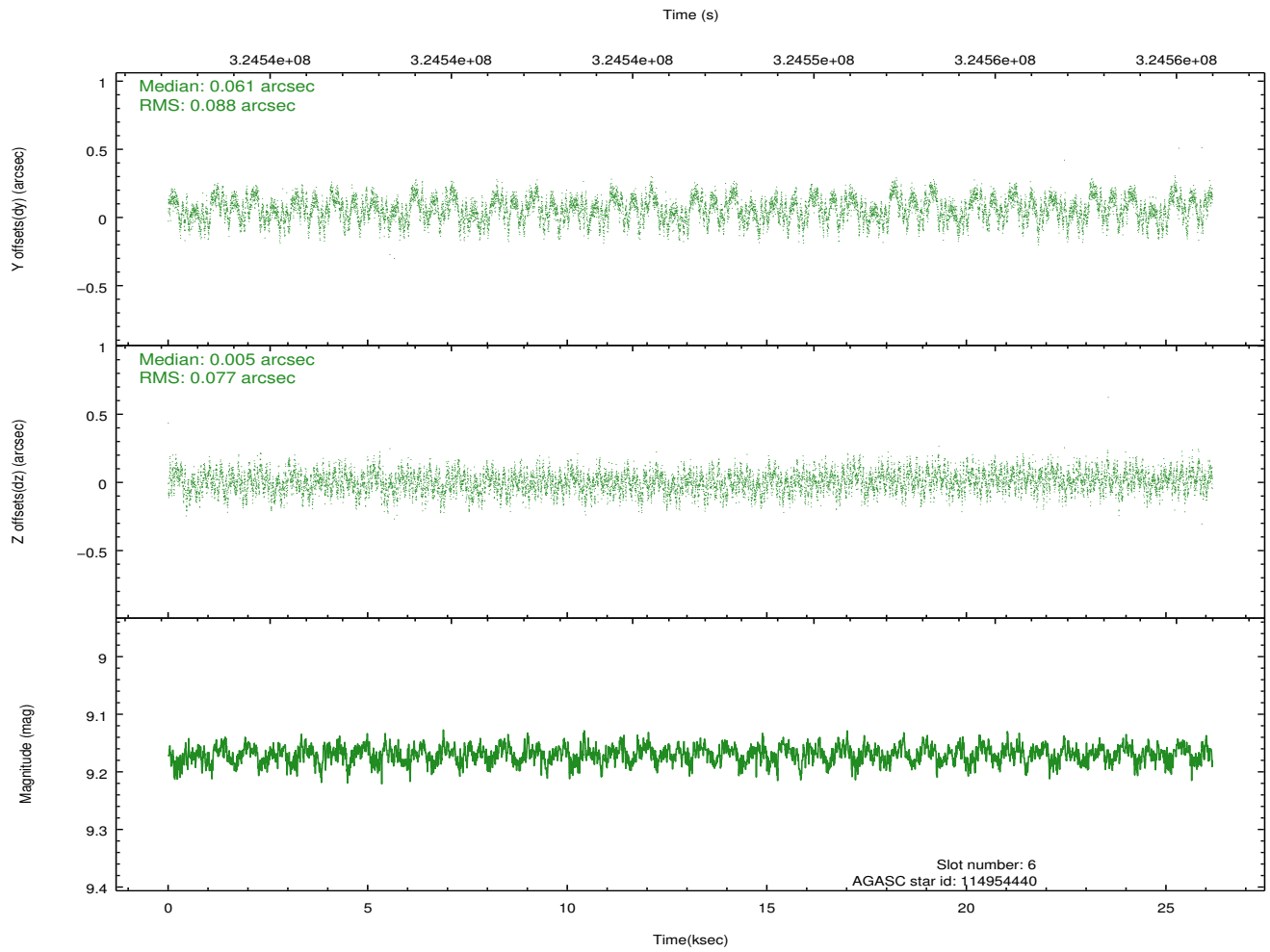
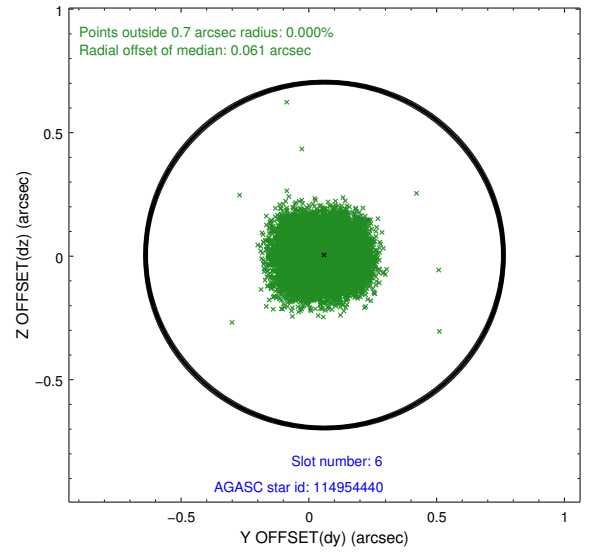
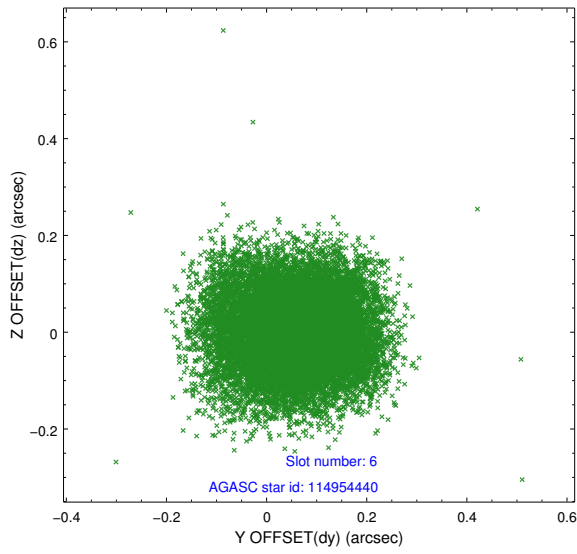
2.4.2 Slot 4



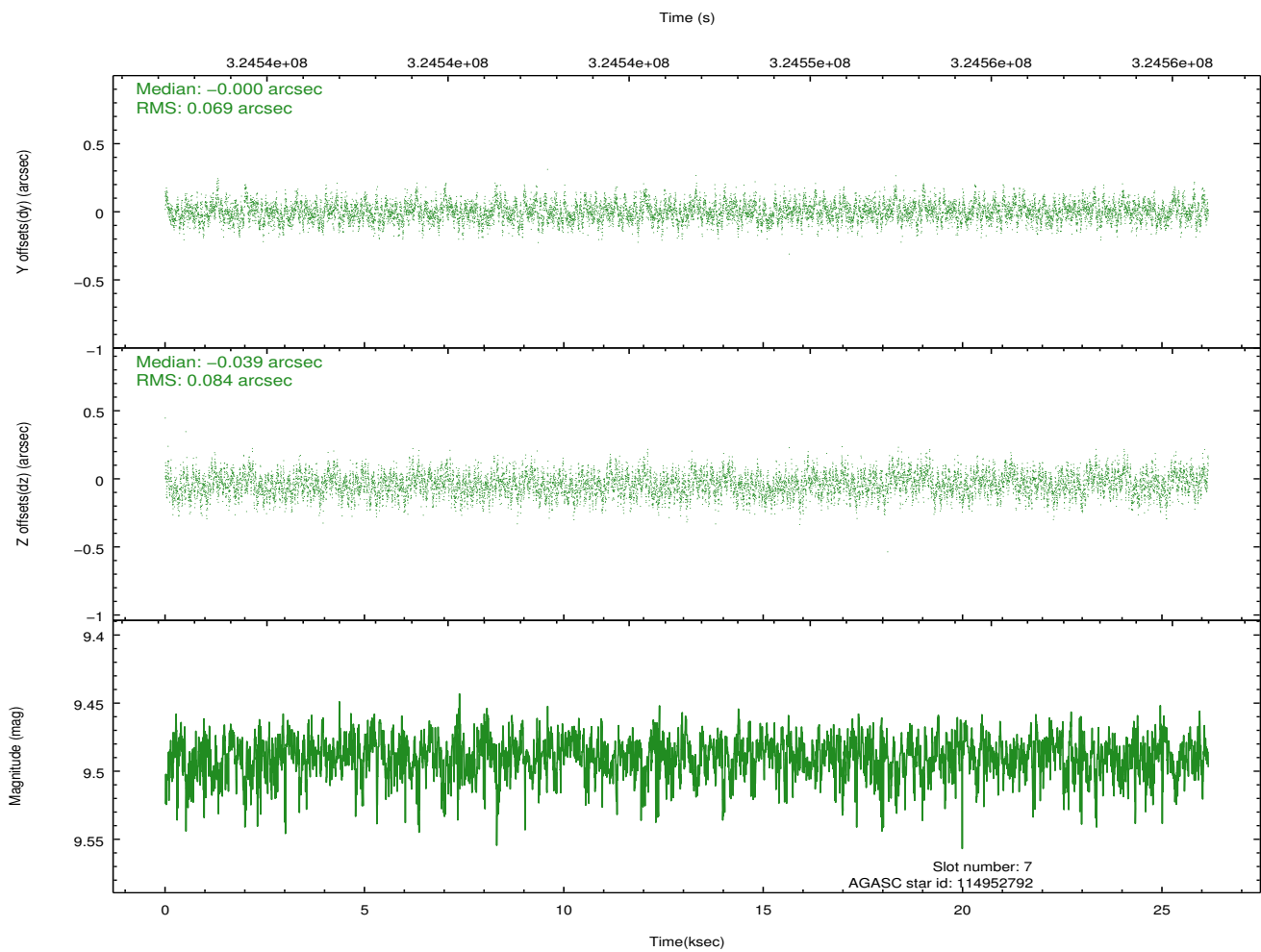
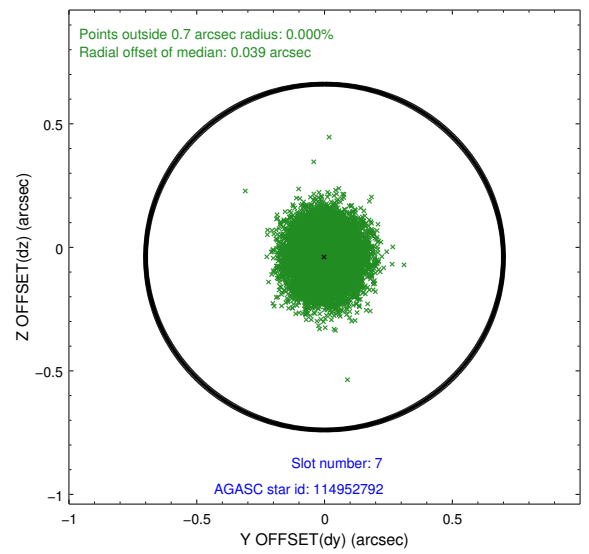
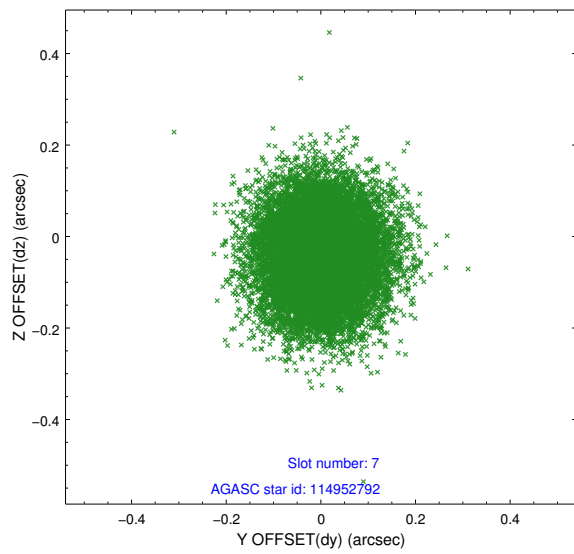
2.4.3 Slot 5



2.4.4 Slot 6

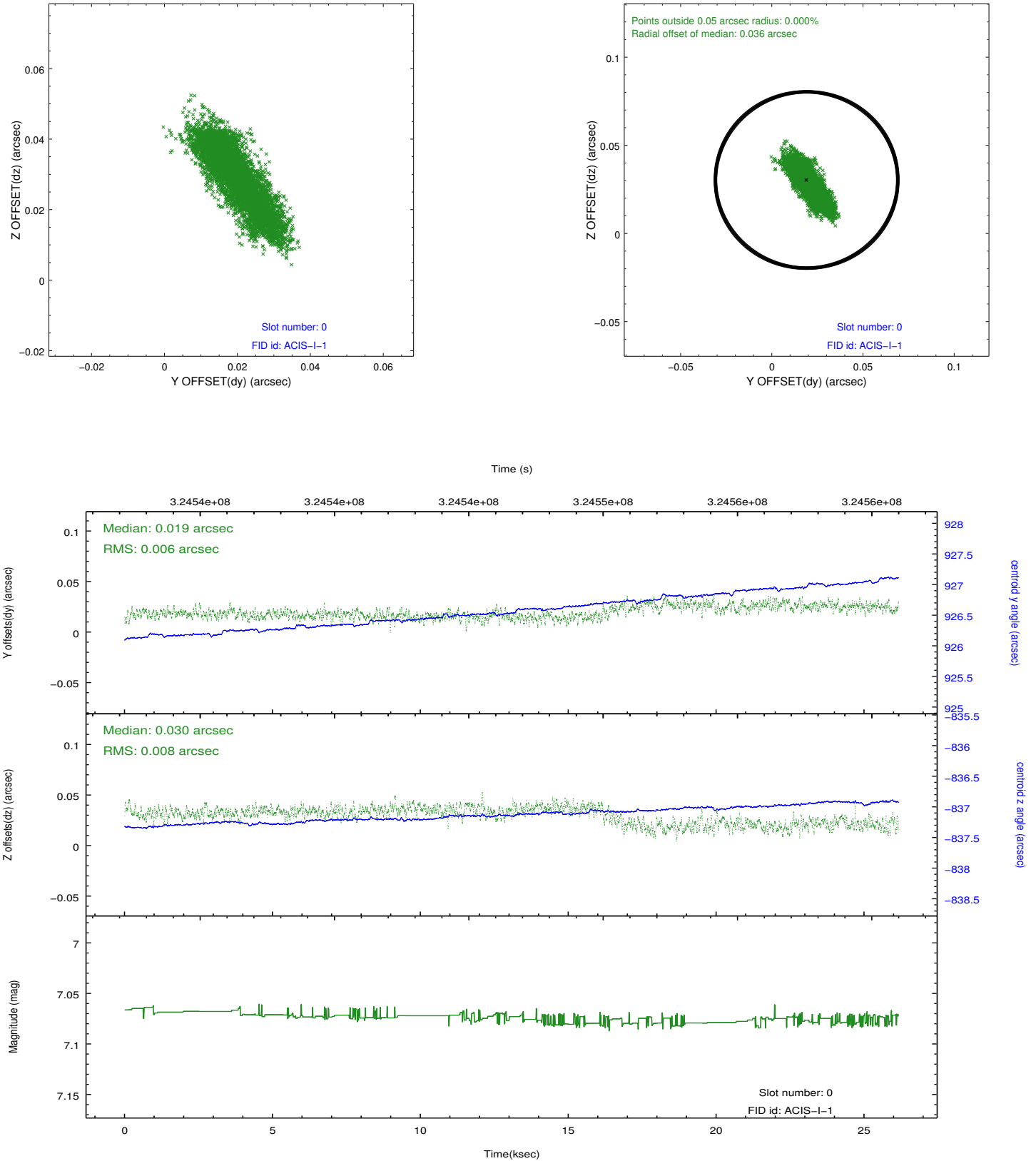


2.4.5 Slot 7

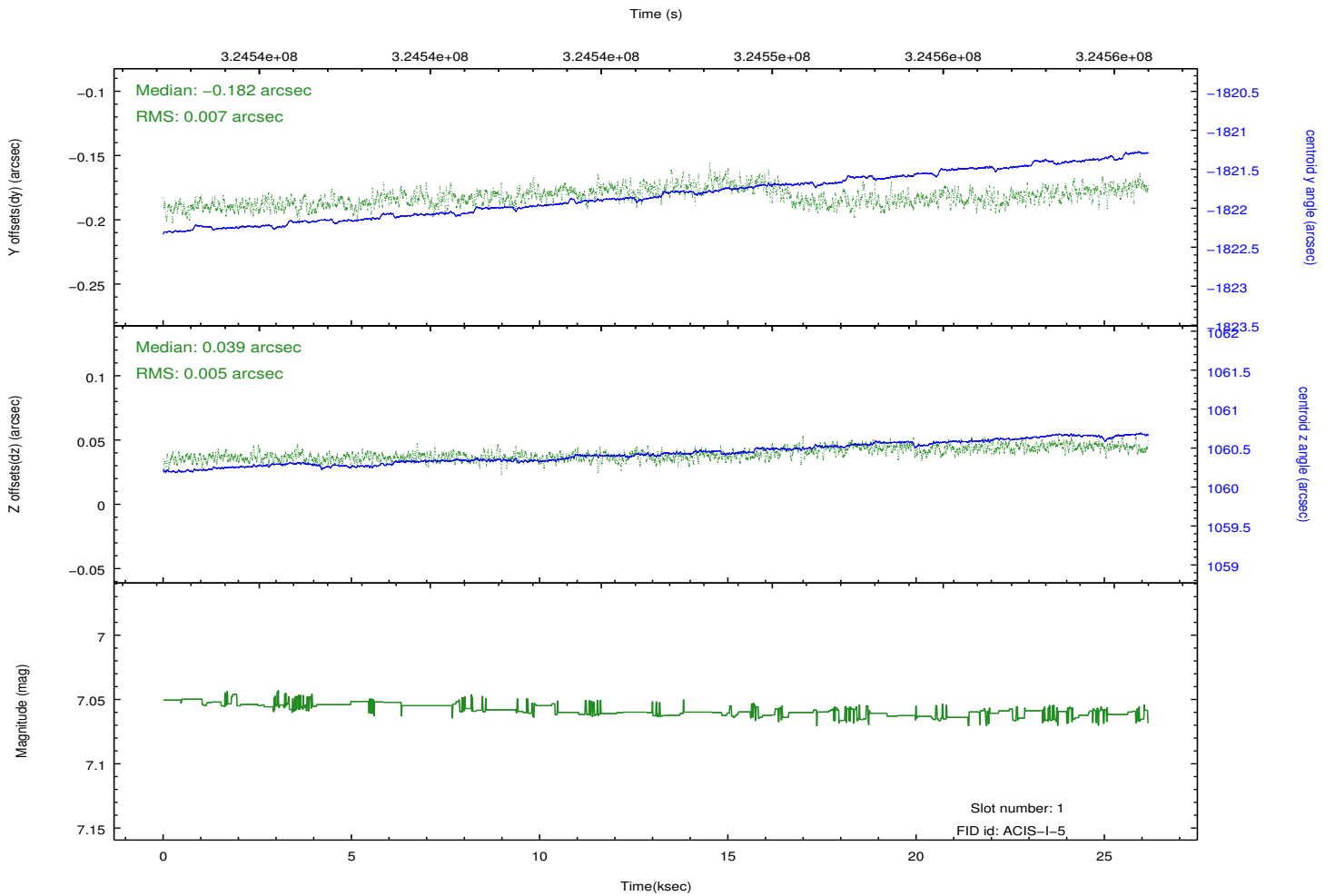
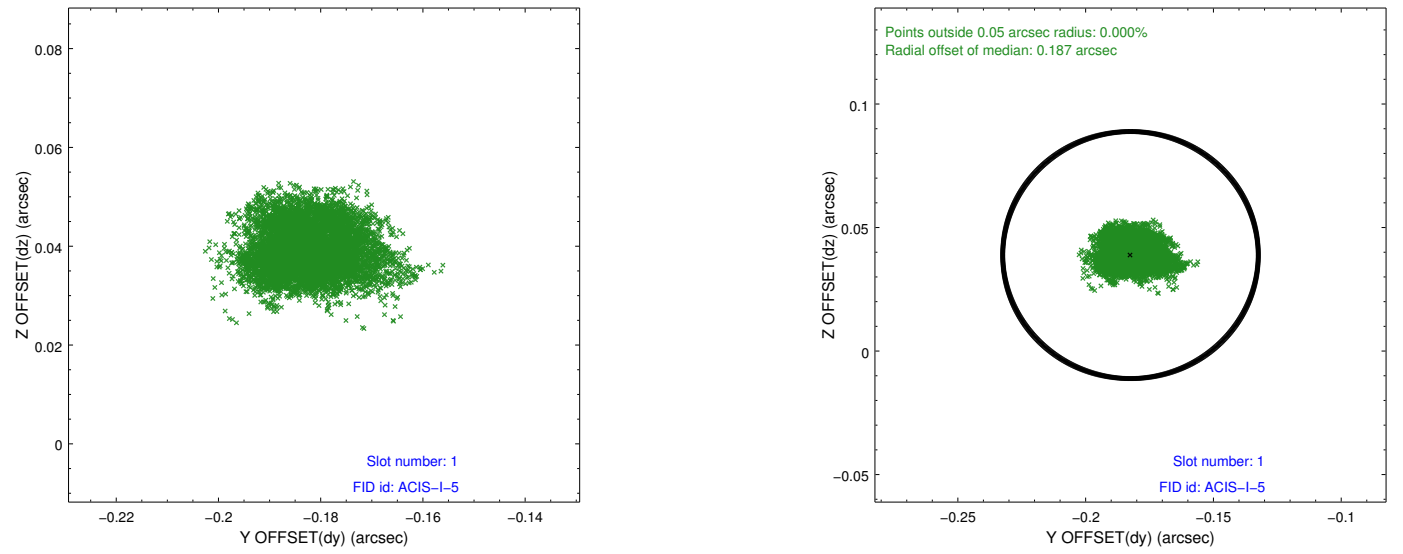


2.5 FID Slots

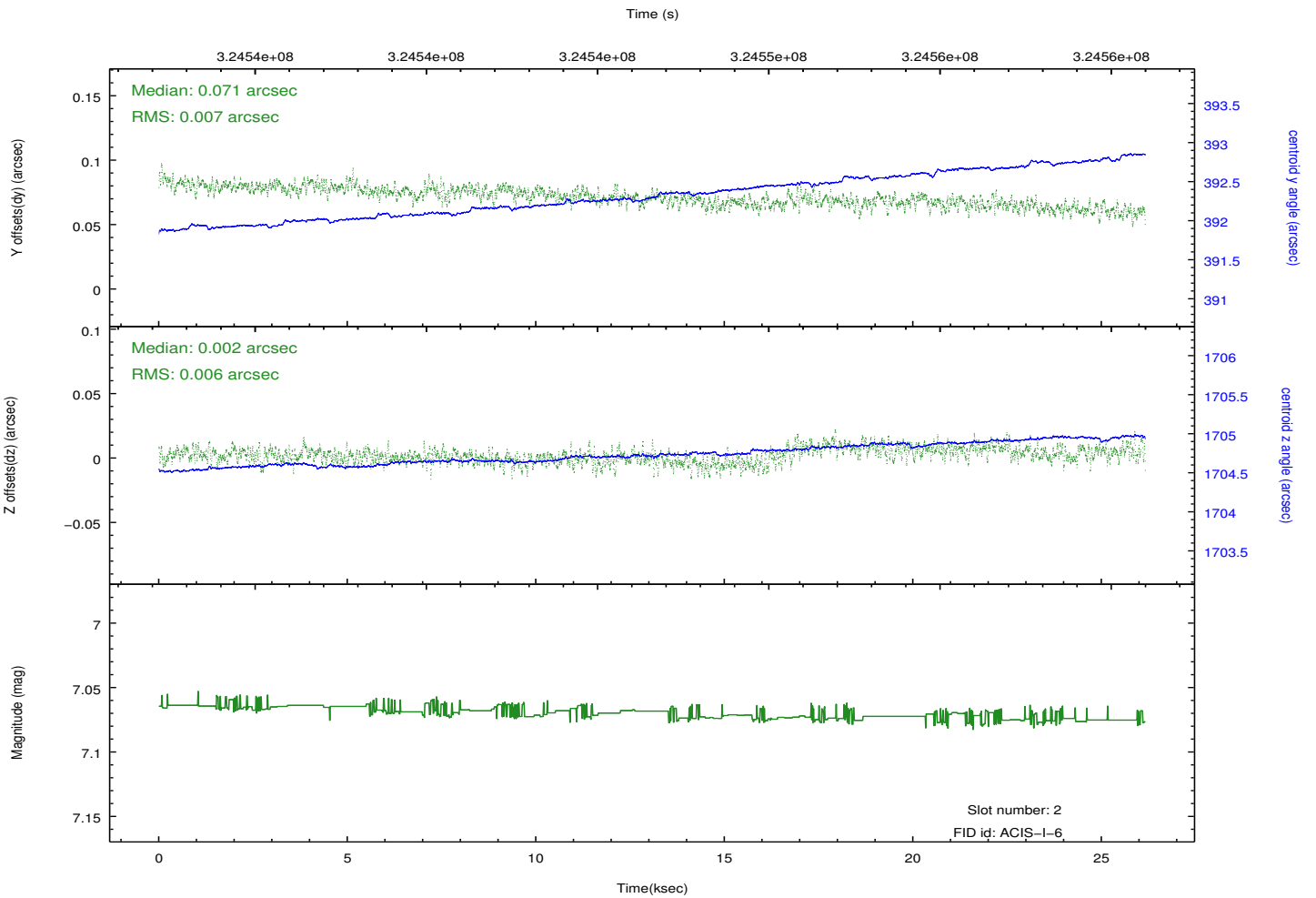
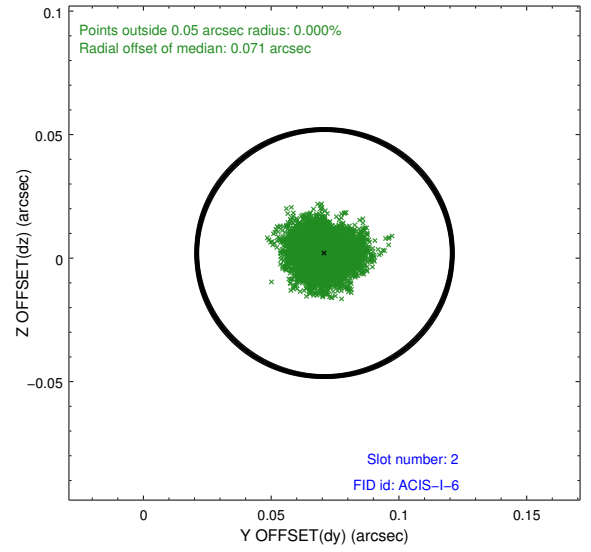
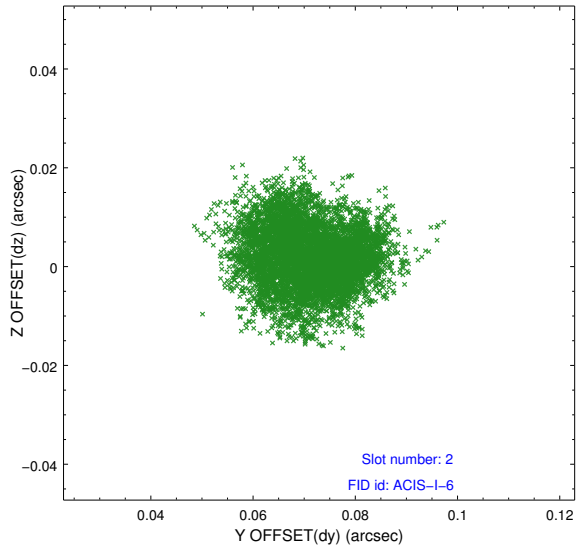
2.5.1 Slot 0



2.5.2 Slot 1



2.5.3 Slot 2



A Summary

A.1 Status

V&V Scientist	Jen Lauer
V&V Date (YYYY-MM-DD)	2012.05.15
V&V Edition	1
V&V Disposition and Status	OK
V&V Charge Time	26.1516002

A.2 Comments

Roll preference met.