

V&V Reference Report

L2 ASCDS Version : 8.4.4

Observation 9729 - L2 Version 2
Chandra X-Ray Center

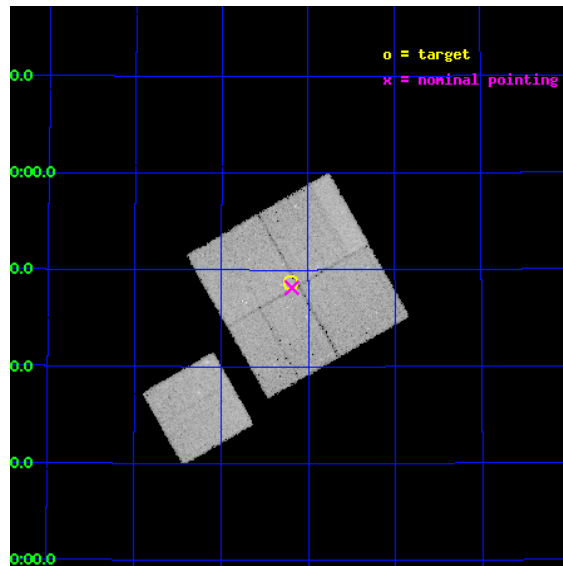
L2 Processing Date : May 17 2012

Contents

1	Front	2
2	OBI	3
2.1	OBI	3
2.1.1	Images	3
2.1.2	Bias	3
2.1.3	Parameters	4
2.1.4	Events	4
2.2	Compared Parameters	5
2.3	Aspect	6
2.4	Star Slots	9
2.4.1	Slot 3	9
2.4.2	Slot 4	10
2.4.3	Slot 5	11
2.4.4	Slot 6	12
2.4.5	Slot 7	13
2.5	FID Slots	14
2.5.1	Slot 0	14
2.5.2	Slot 1	15
2.5.3	Slot 2	16
A	Summary	17
A.1	Status	17
A.2	Comments	17

1 Front

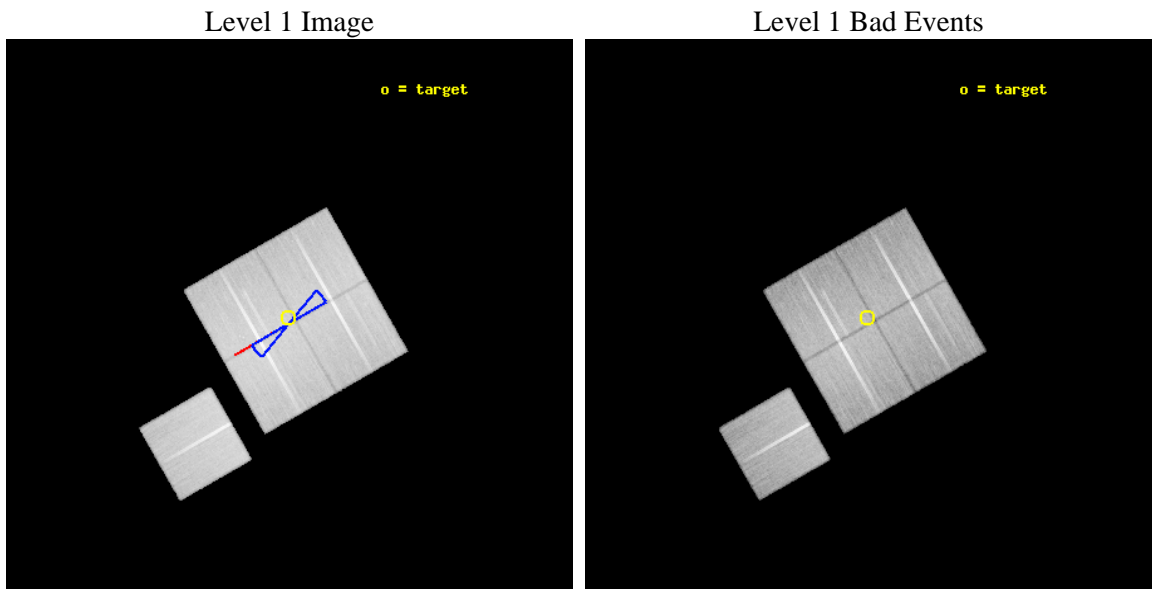
seq_num	900797	Sequence number
obs_id	9729	Observation id
title	The Evolution of Faint AGN at High Redshift	Proposal title
observer	Prof Kirpal Nandra	Principal investigator
object	AEGIS-2	Source name
dtcycle	0	
cycle	P	events from which exps? Prim/Second/Both
ra_targ	214.8	Observer's specified target RA [deg]
dec_targ	52.810611	Observer's specified target Dec [deg]
ra_nom	214.79710426583	Nominal RA [deg]
dec_nom	52.802723287583	Nominal Dec [deg]
roll_nom	240.2109994809	Nominal Roll [deg]
revision	2	Processing version of data
ontime	48722.536523402	Sum of GTIs [s]
livetime	48085.940714714	Livetime [s]
ontime0	48725.677443981	Sum of GTIs [s]
ontime1	48719.395573318	Sum of GTIs [s]
ontime2	48725.677623332	Sum of GTIs [s]
ontime3	48722.536523402	Sum of GTIs [s]
ontime6	48725.677463889	Sum of GTIs [s]
l2events	167528	Number of level 2 events



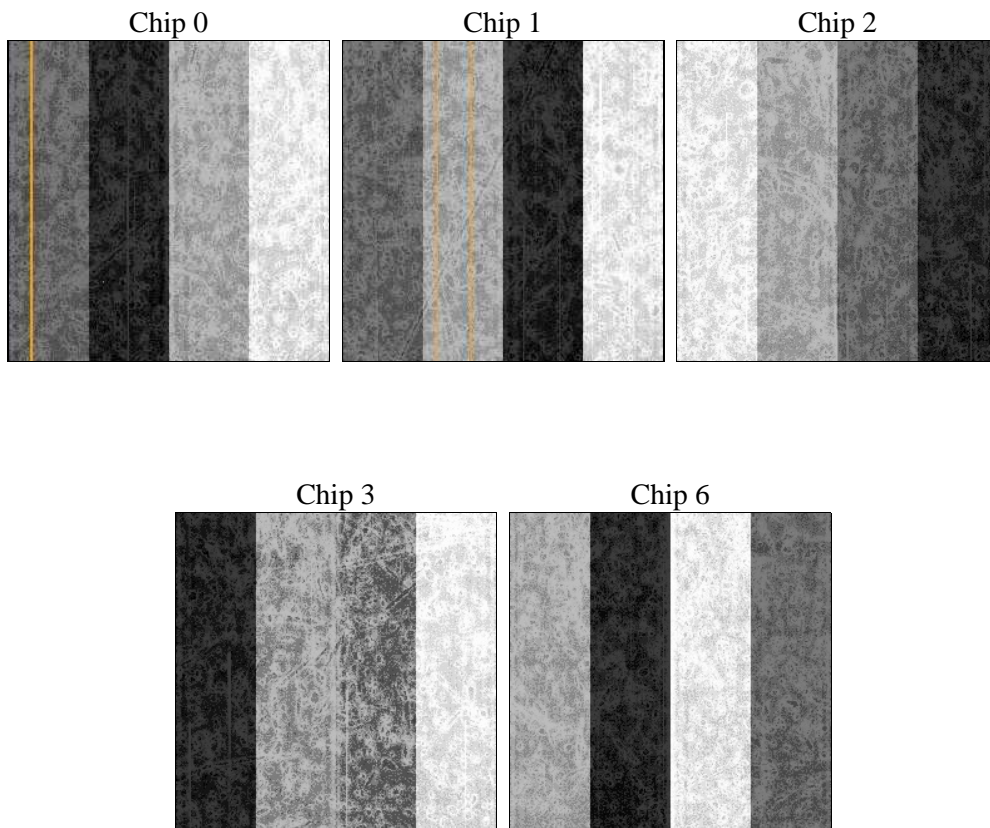
2 OBI

2.1 OBI

2.1.1 Images



2.1.2 Bias



2.1.3 Parameters

obi_num	0	Obi number	sched_exp_time	48576.000000	[s] Scheduled observation exposure time
ascdsver	8.4.4	Processing system revision	ontime	48722.536523402	Sum of GTIs [s]
caldbver	4.4.9	 	ontime0	48725.677443981	Sum of GTIs [s]
date	2012-05-17T18:24:40	Date and time of file creation	ontime1	48719.395573318	Sum of GTIs [s]
revision	2	Processing version of data	ontime2	48725.677623332	Sum of GTIs [s]
			ontime3	48722.536523402	Sum of GTIs [s]
			ontime6	48725.677463889	Sum of GTIs [s]
			l1events	1971099	Number of level 1 events

2.1.4 Events

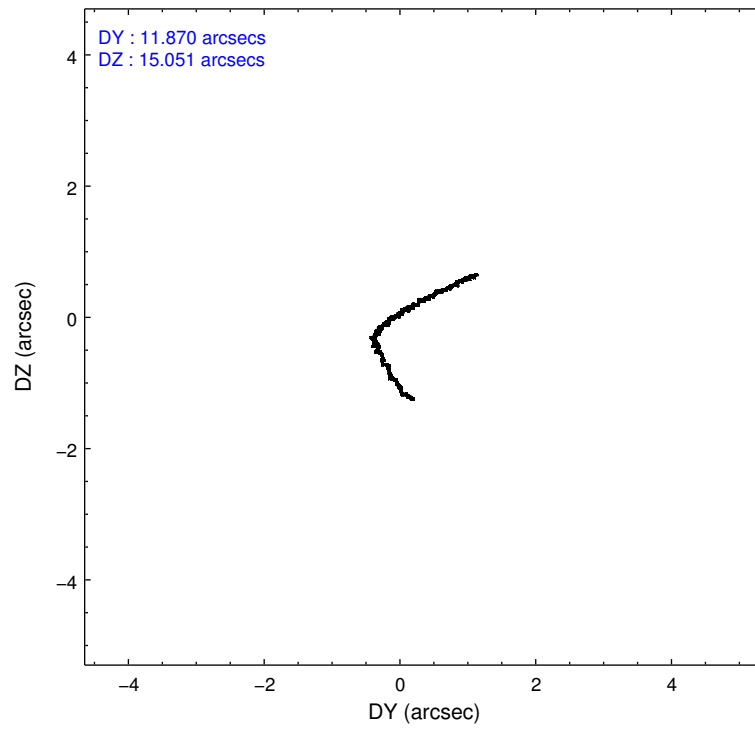
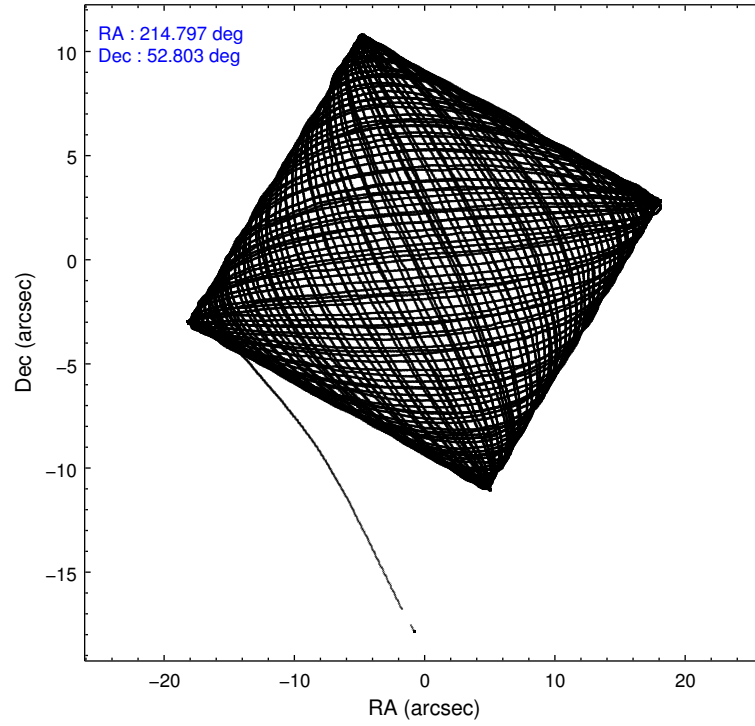
	ccd 0	ccd 1	ccd 2	ccd 3	ccd 6
level 1 events	377868	377702	418087	397980	399462
rejected events	338185	332849	379041	359778	358715
rejected %	89%	88%	90%	90%	89%

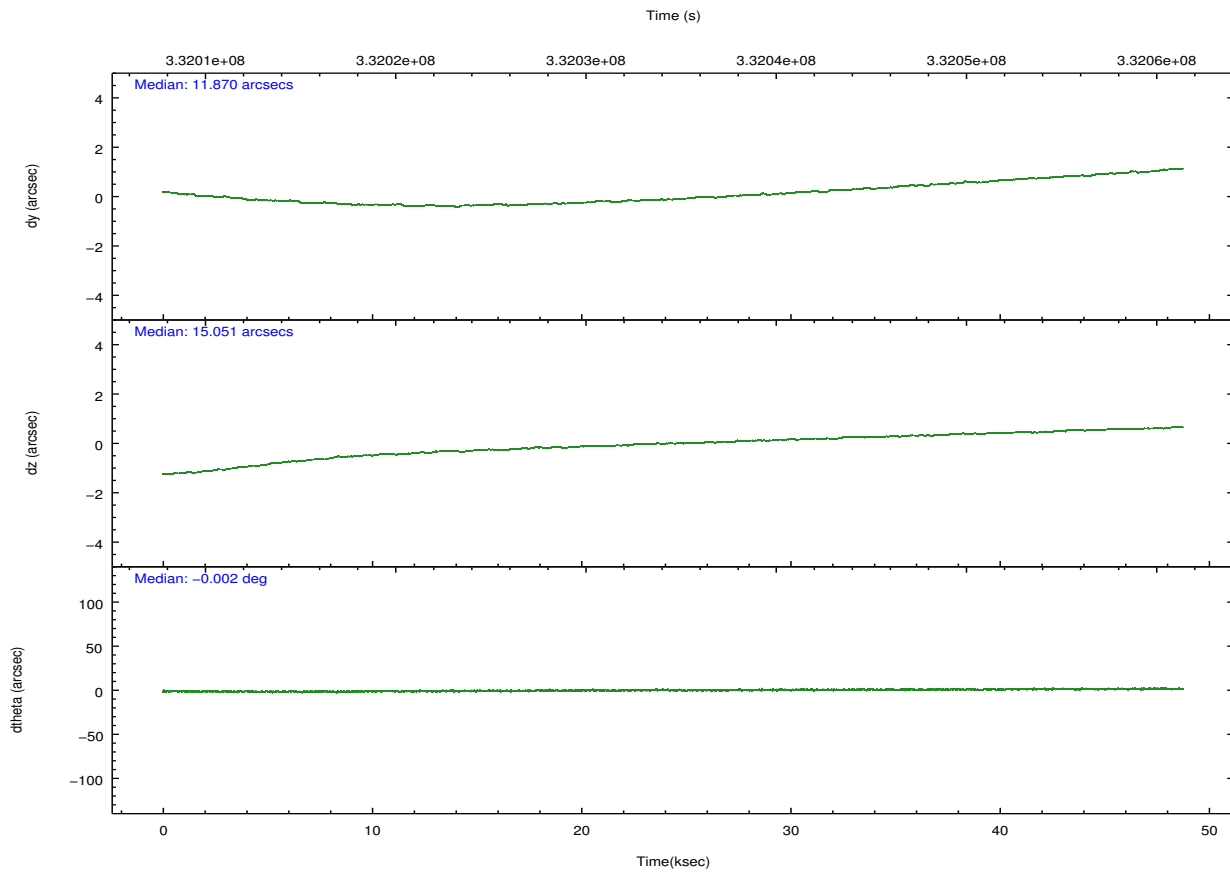
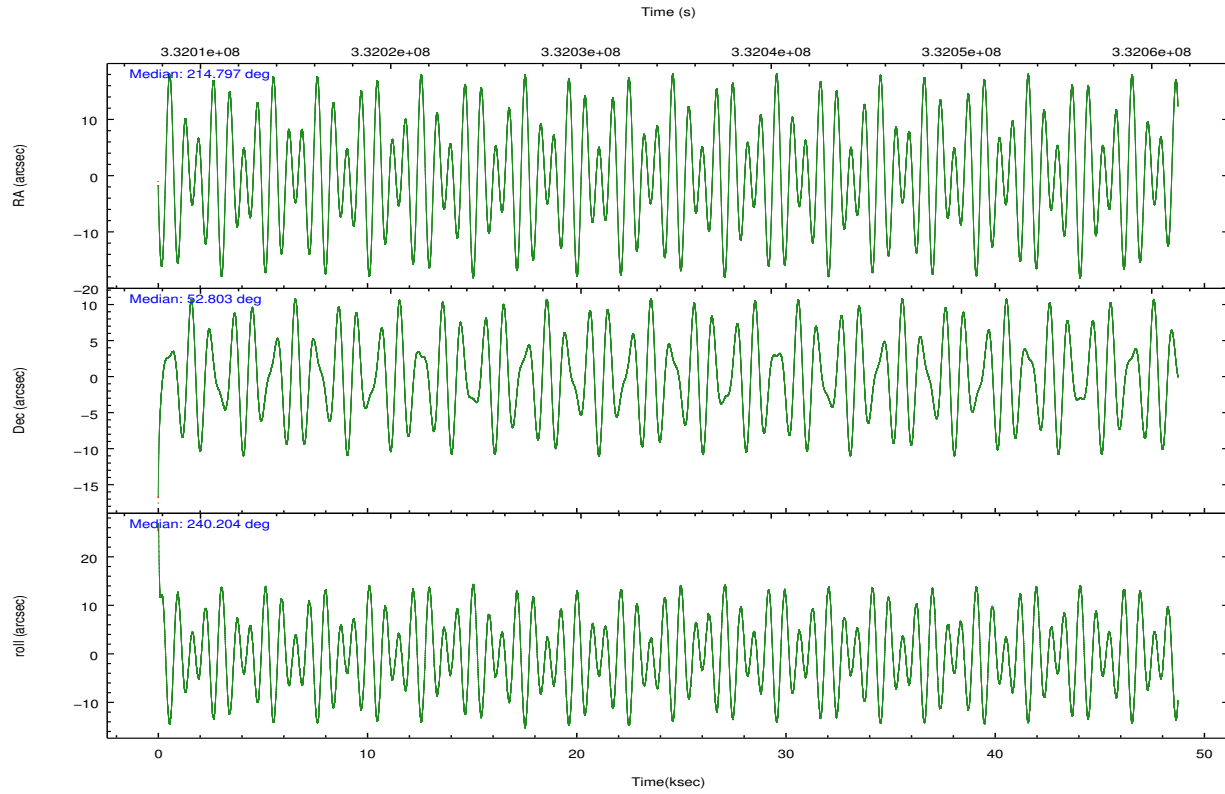
	ccd 0	ccd 1	ccd 2	ccd 3	ccd 6
grade 0 events	13733	16061	13927	13388	14112
	3%	4%	3%	3%	3%
grade 1 events	185	202	222	245	198
	0%	0%	0%	0%	0%
grade 2 events	9825	10234	9409	8595	9012
	2%	2%	2%	2%	2%
grade 3 events	4419	4817	4140	4340	4522
	1%	1%	0%	1%	1%
grade 4 events	4093	4684	4389	4279	4427
	1%	1%	1%	1%	1%
grade 5 events	14394	15789	13411	16504	15922
	3%	4%	3%	4%	3%
grade 6 events	7764	9259	7357	7768	8863
	2%	2%	1%	1%	2%
grade 7 events	323455	316656	365232	342861	342406
	85%	83%	87%	86%	85%

2.2 Compared Parameters

Parameter	Planned	Actual	Parameter	Planned	Actual
Instrument	ACIS	ACIS	Obspar format version number	7	7
Detector	ACIS-01236	ACIS-01236	Obspar file type	PREDICTED	ACTUAL
Grating	NONE	NONE	Obspar update status	NONE	UPDATED
Data mode	VFAINT	VFAINT	CCD I0 on	Y	Y
Observation mode	POINTING	POINTING	CCD I1 on	Y	Y
[deg] Pointing RA	214.796752	214.797104265833	CCD I2 on	Y	Y
[deg] Pointing Dec	52.830222	52.80272328758252	CCD I3 on	Y	Y
[deg] Pointing Roll	240.002589	240.2109994809024	CCD S0 on	N	N
[deg] Roll angle	50.000000	50.000000	CCD S1 on	N	N
[deg] Roll tolerance	10.000000	10.000000	CCD S2 on	O1	Y
Roll constraint allows 180D rotation	Y	Y	CCD S3 on	N	N
[mm] SIM focus pos	-0.782348	-0.7809083437167272	CCD S4 on	N	N
[mm] SIM defocus	0	0.001439871863259334	CCD S5 on	N	N
[mm] SIM translation stage pos	-233.592463	-233.5874344608287	Number of optional ACIS chips dropped	0	0
[mm] SIM translation stage offset	0	-0.005018542100998502	On-chip summing requested	N	N
[s] Observation start time (MET)	332010366.184000	332009278.21739	Subarray requested	NONE	NONE
Observation start date	2008-07-09T17:05:01	2008-07-09T16:47:58	Alternating exposures requested	N	N
[s] Observation end time (MET)	332058942.184000	332059742.04486	[s] Primary exposure time	0.000000	3.1
Observation end date	2008-07-10T06:34:37	2008-07-10T06:49:02			
Read mode	TIMED	TIMED			

2.3 Aspect





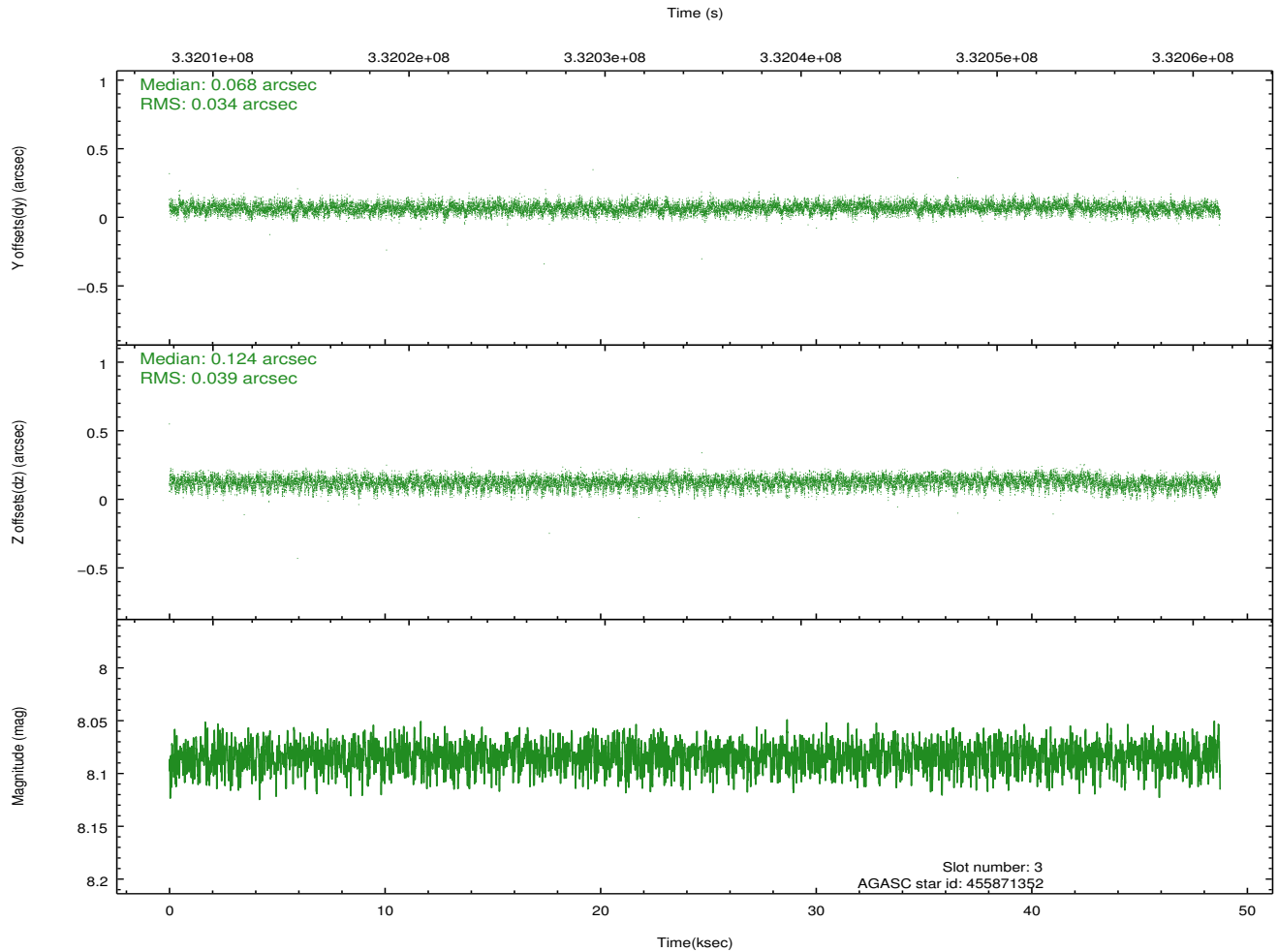
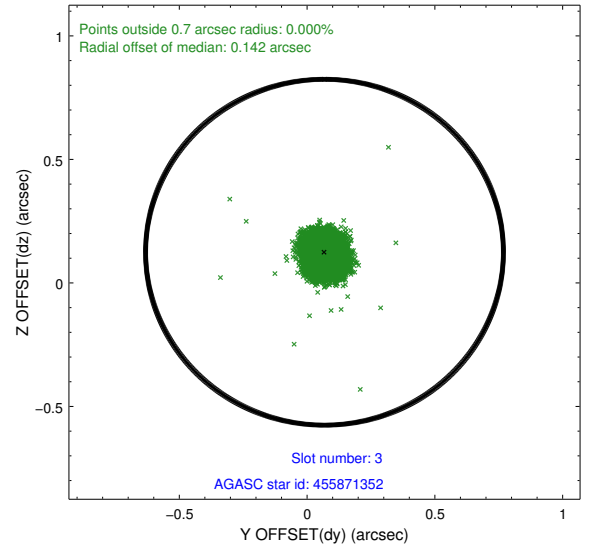
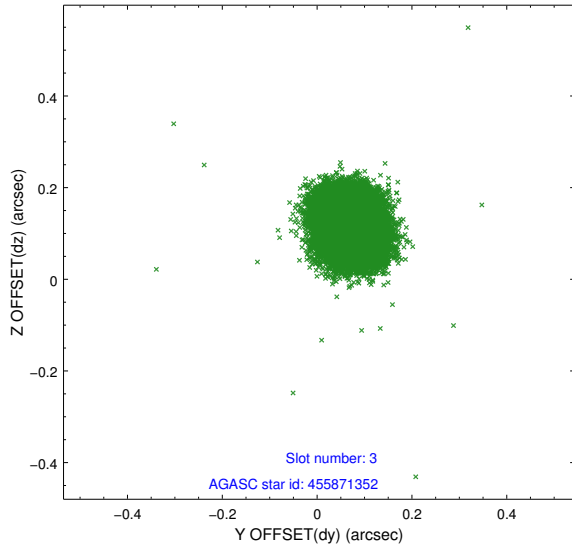
Slot Statistics

slot	status	id	mag	n_pts	med_dy	med_dz	dr1	dr2	ra	dec	mean_y	mean_z
0	FID	ACIS-I-1	7.00	11889	-0.004	0.025	0.025	0.042	0.000000	0.000000	927.54	-838.55
1	FID	ACIS-I-5	6.99	11889	-0.148	0.023	0.013	0.028	0.000000	0.000000	-1820.73	1058.94
2	FID	ACIS-I-6	7.00	11888	0.060	0.025	0.017	0.028	0.000000	0.000000	393.15	1703.43
3	GUIDE	455871352	8.08	23769	0.068	0.124	0.054	0.089	215.099961	52.172669	1714.39	1763.09
4	GUIDE	505806936	7.04	23773	0.107	-0.037	0.067	0.120	213.820815	52.535927	1974.11	-1327.91
5	GUIDE	505812088	8.15	23770	0.052	-0.086	0.077	0.120	214.186617	53.263562	-698.39	-1920.64
6	GUIDE	505812376	7.59	23773	-0.050	-0.231	0.056	0.088	214.039537	52.937930	478.50	-1621.09
7	GUIDE	505815928	8.32	23769	-0.187	0.232	0.075	0.123	216.234742	53.074559	-2343.79	2238.08

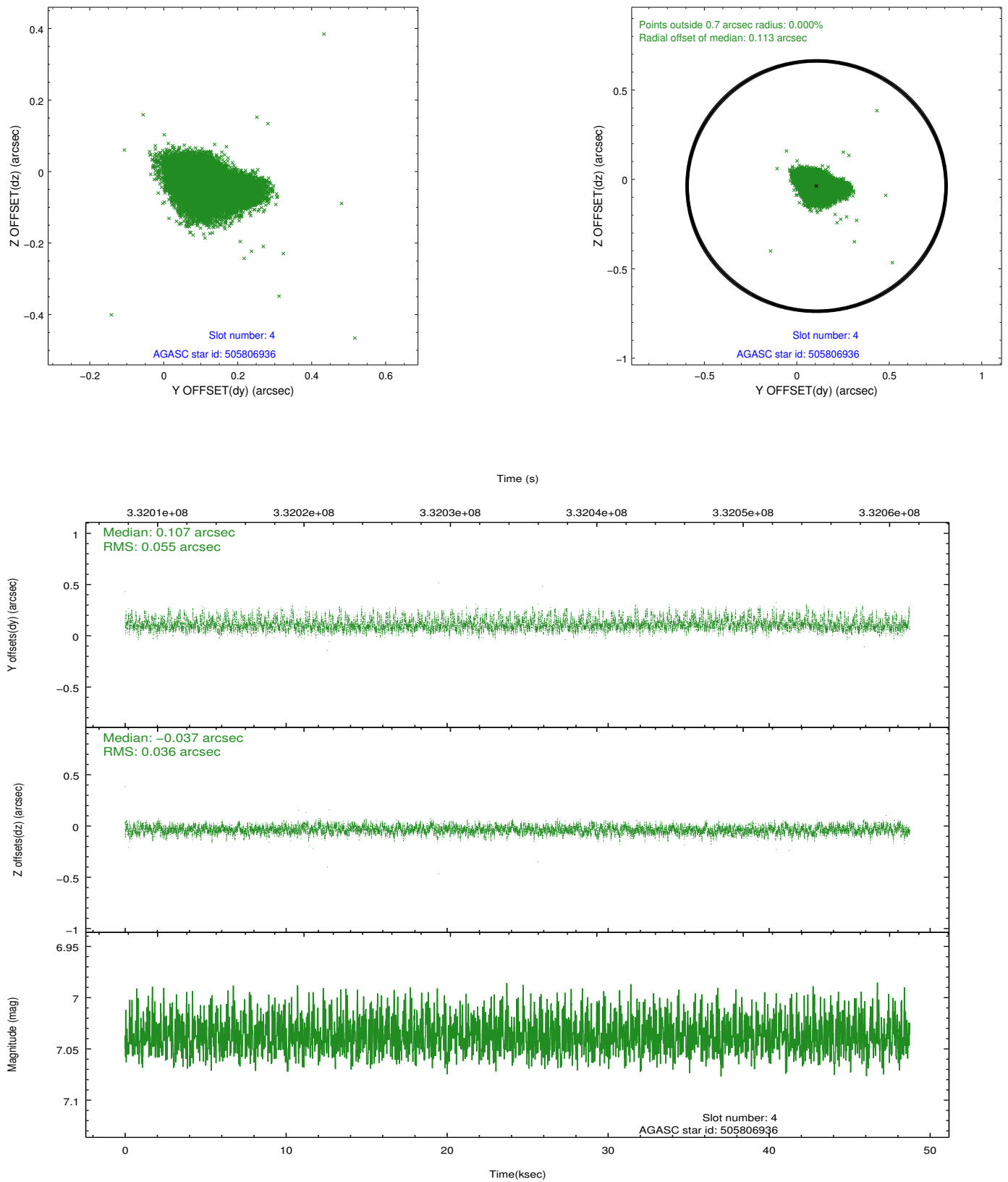
∞

2.4 Star Slots

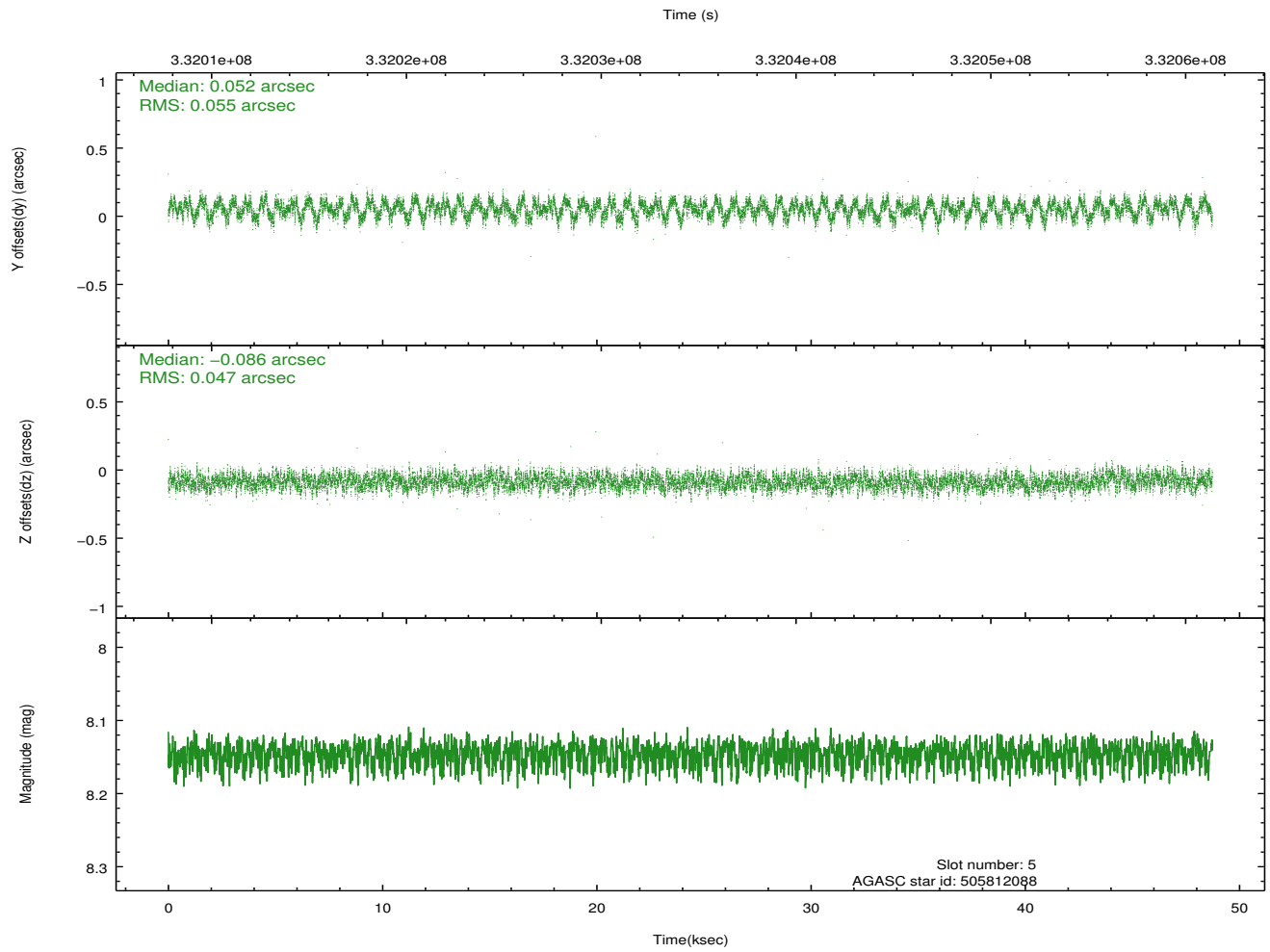
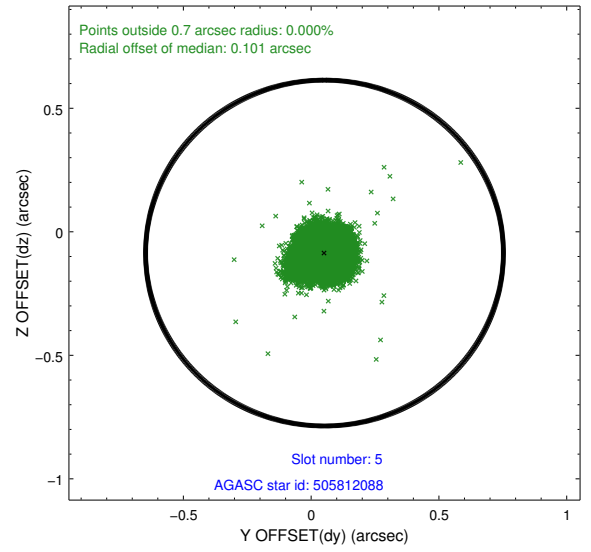
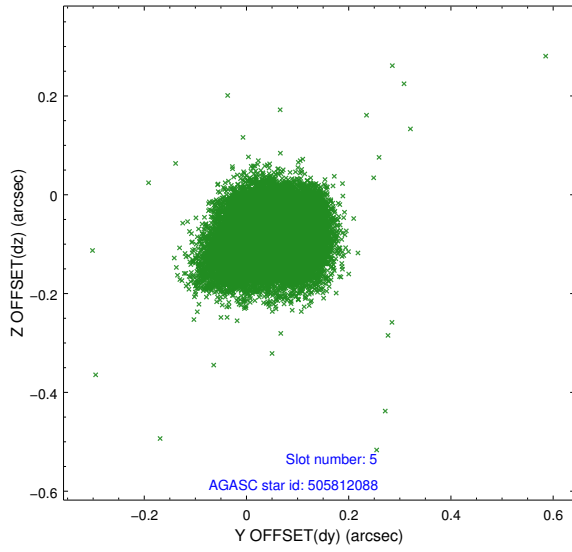
2.4.1 Slot 3



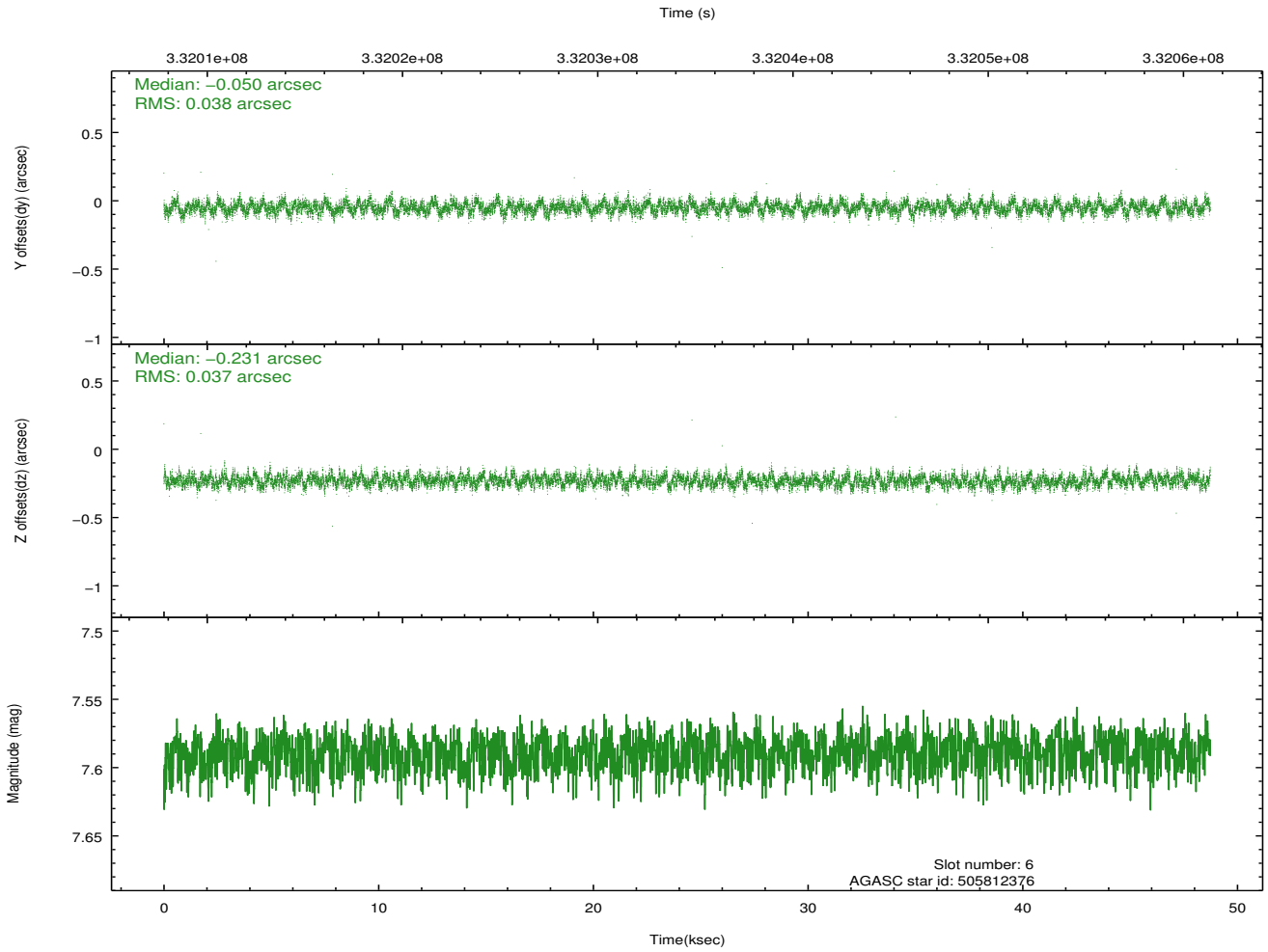
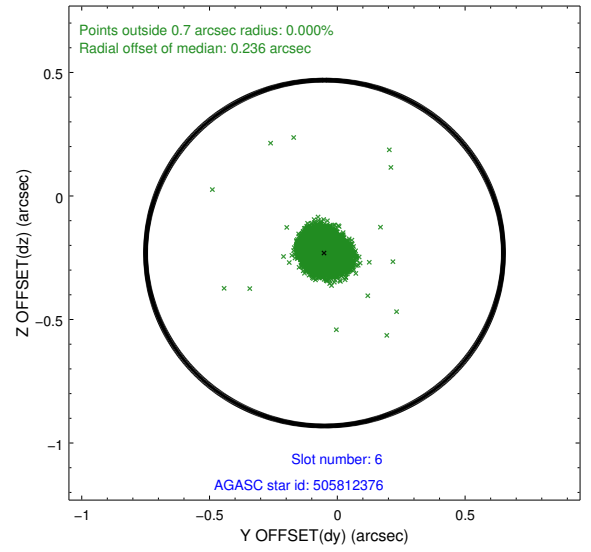
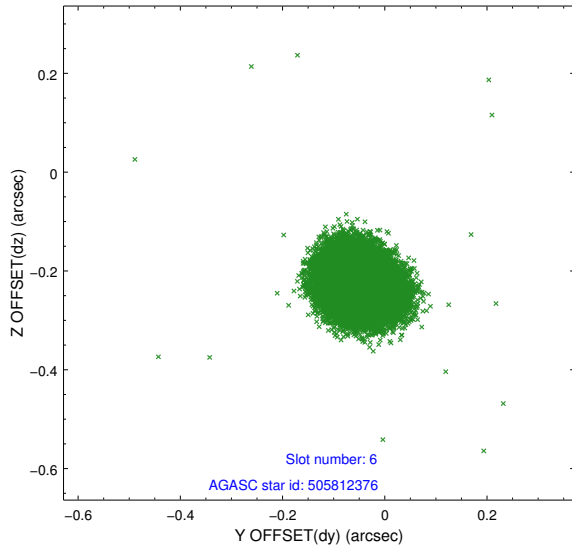
2.4.2 Slot 4



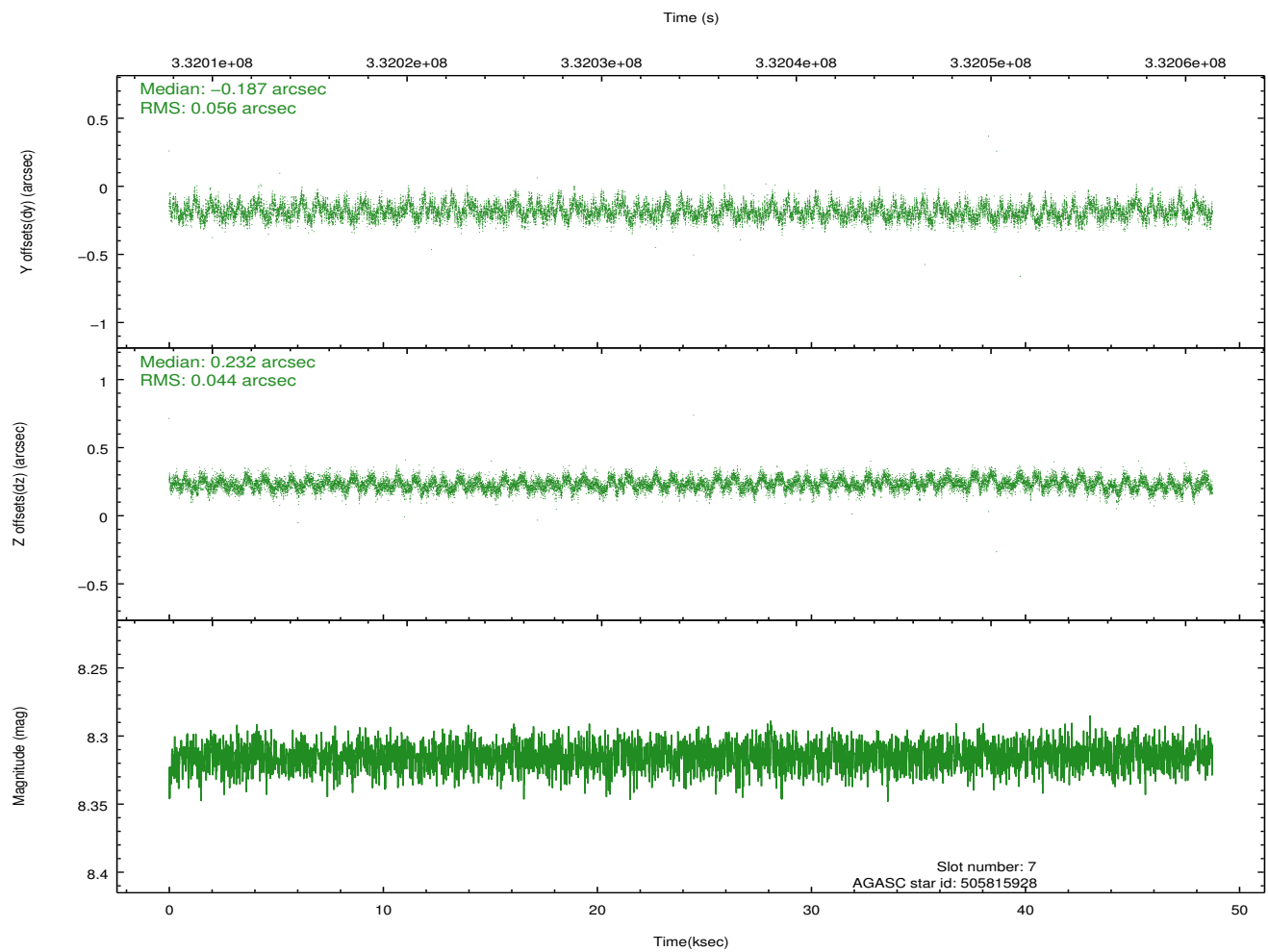
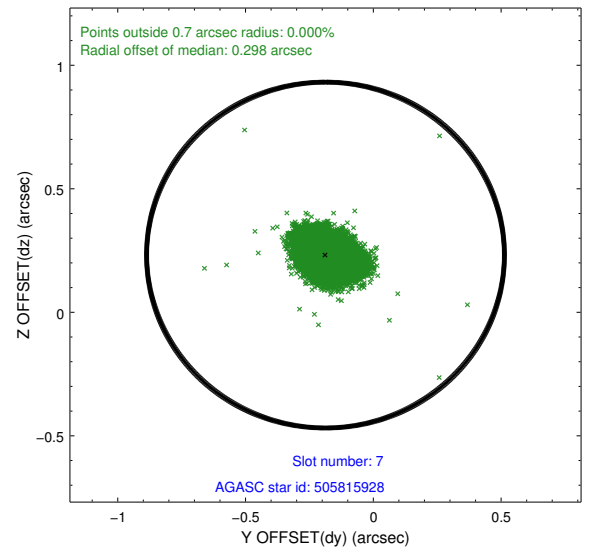
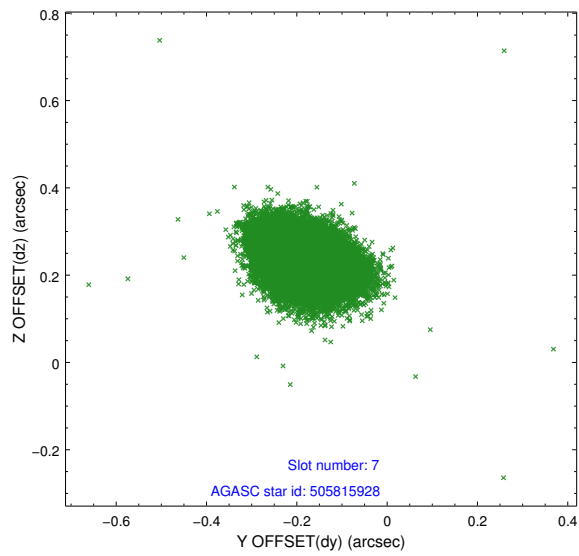
2.4.3 Slot 5



2.4.4 Slot 6

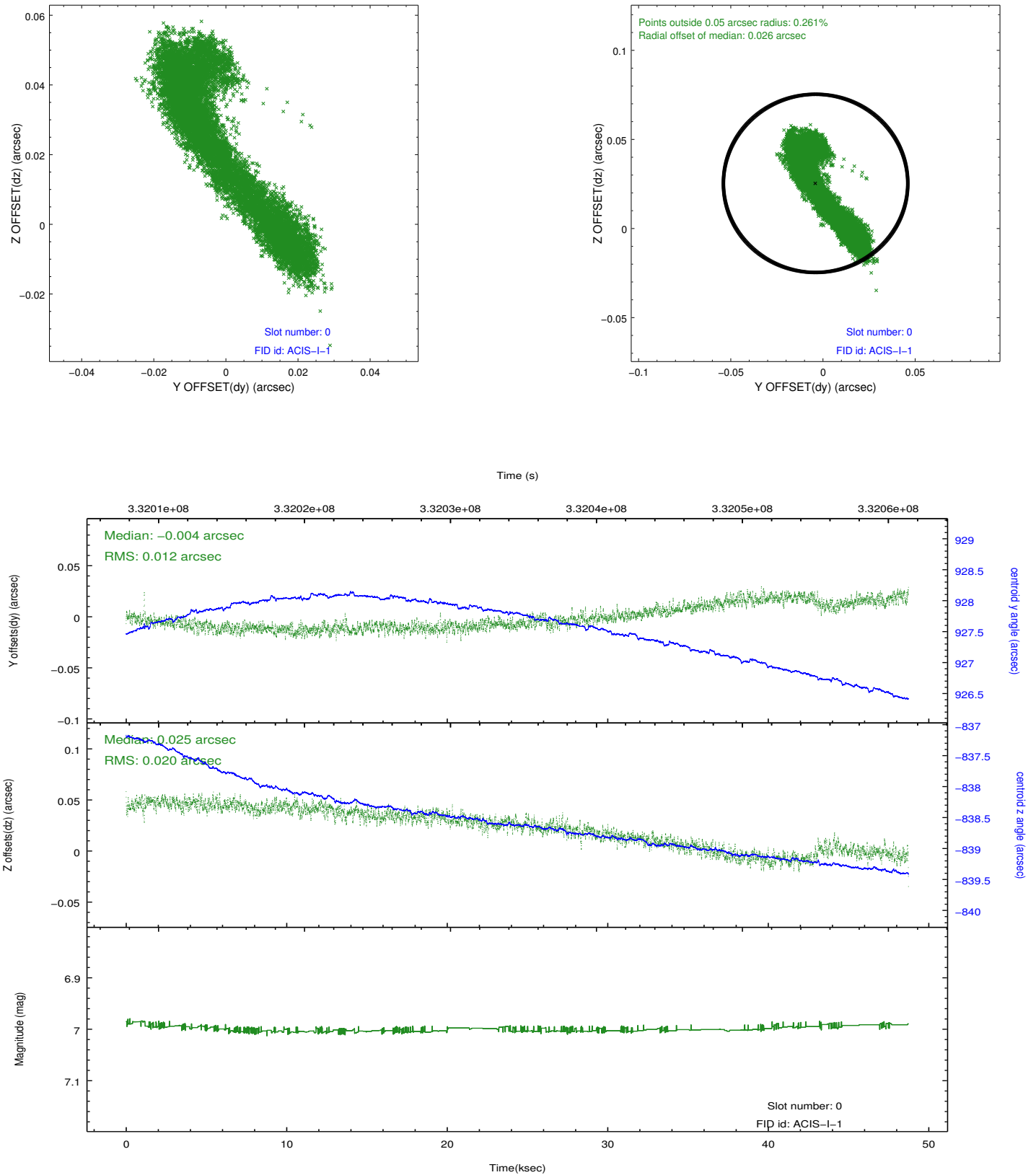


2.4.5 Slot 7

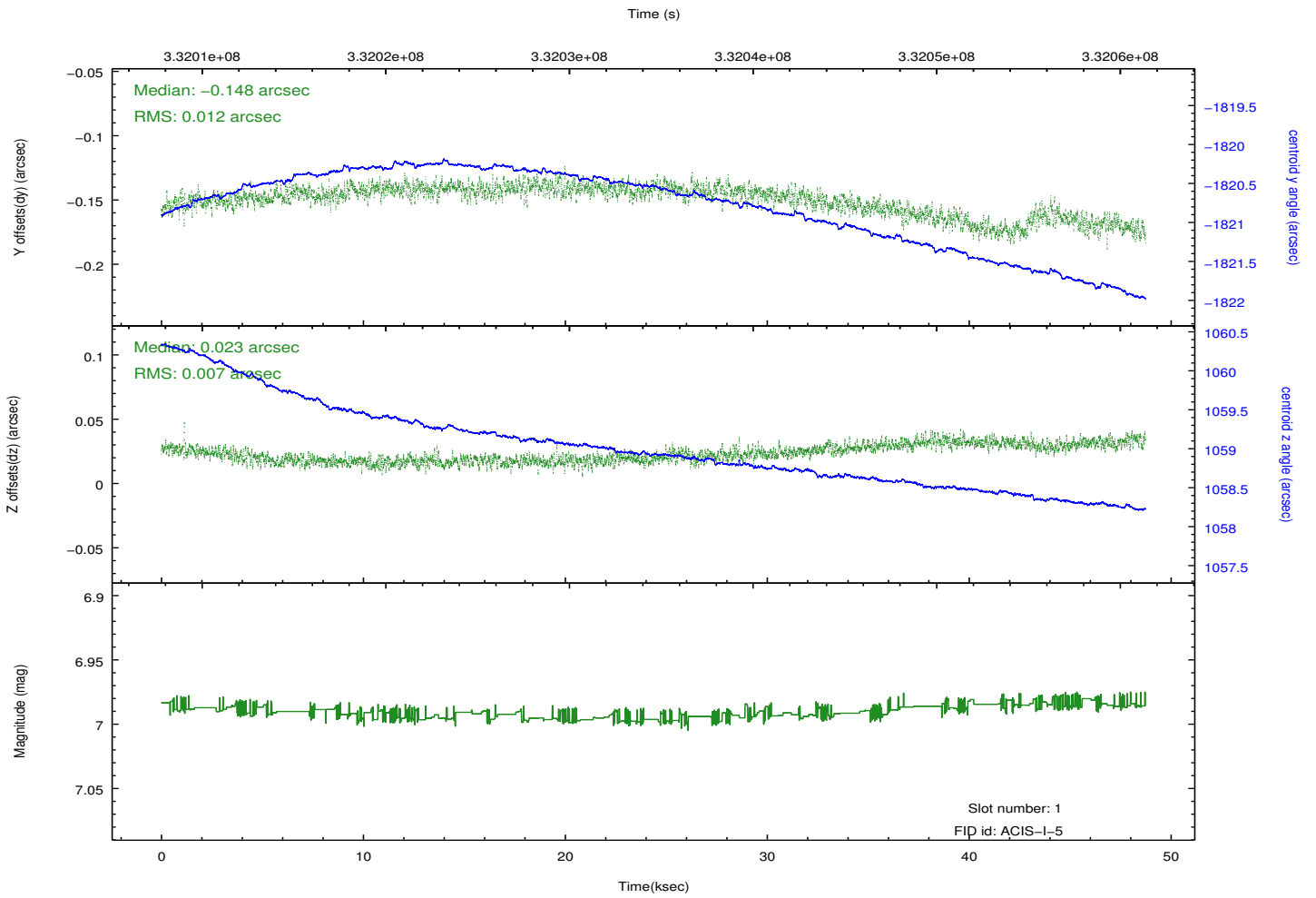
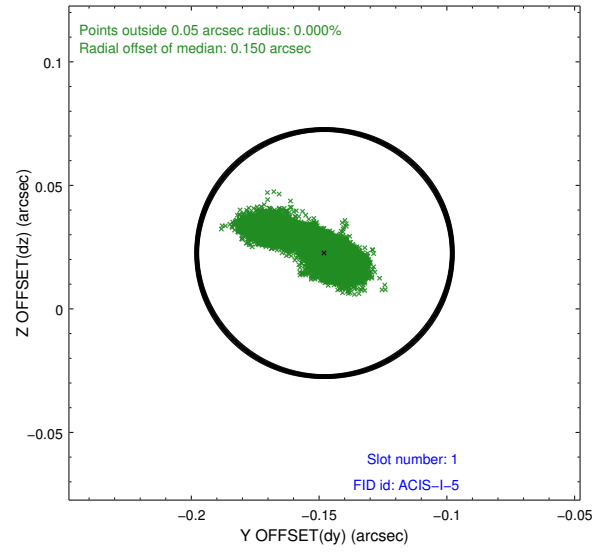
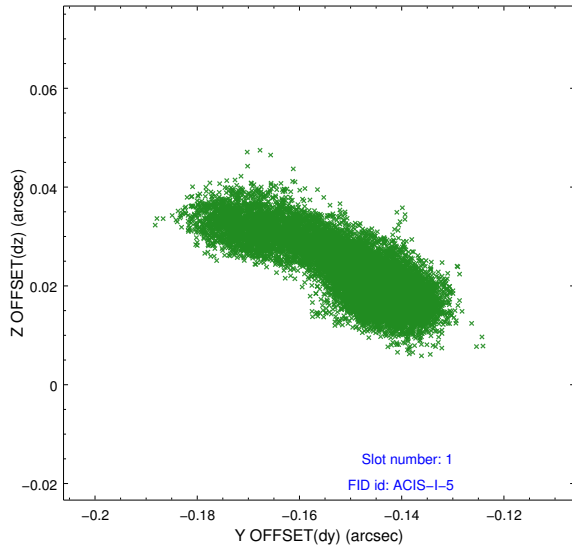


2.5 FID Slots

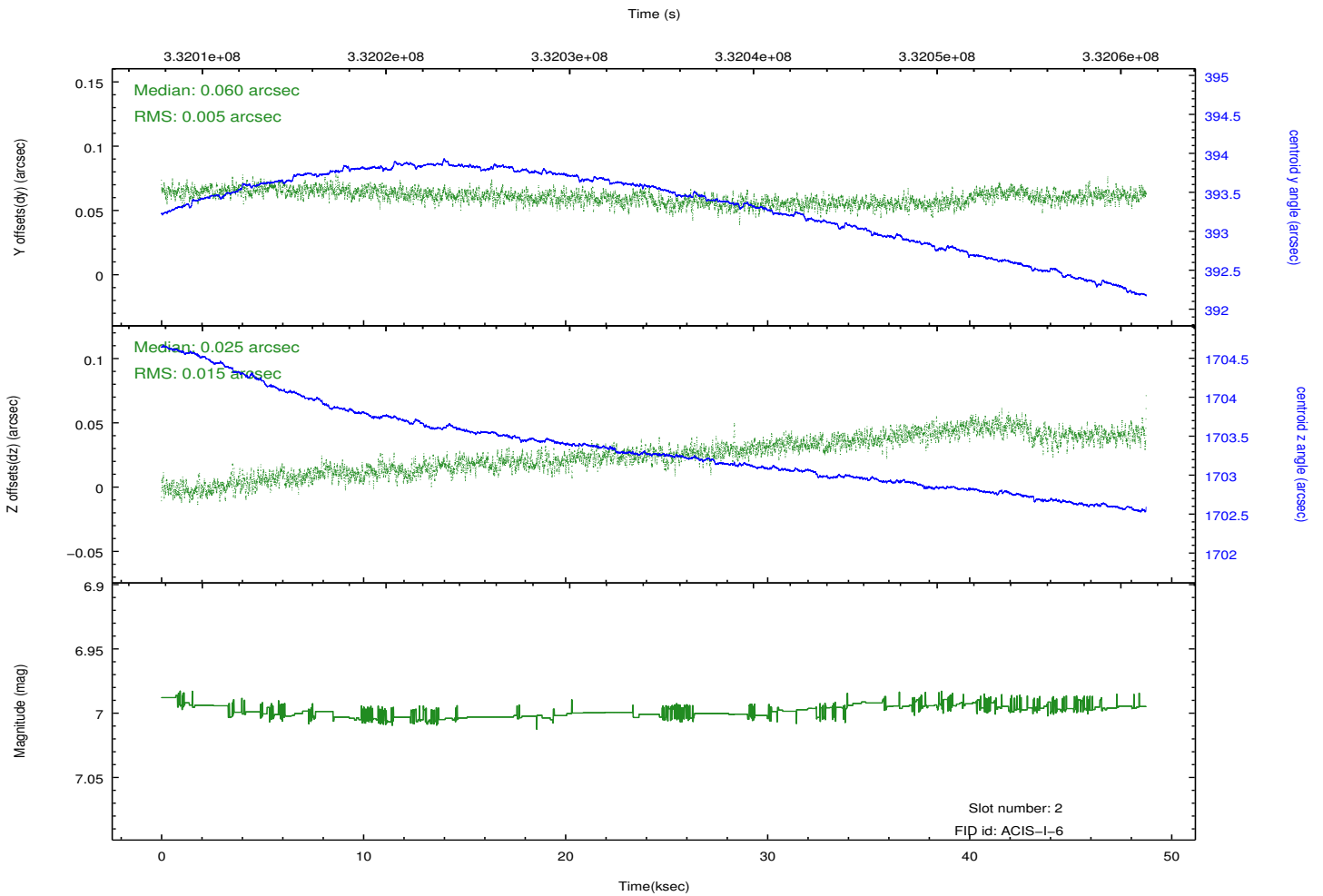
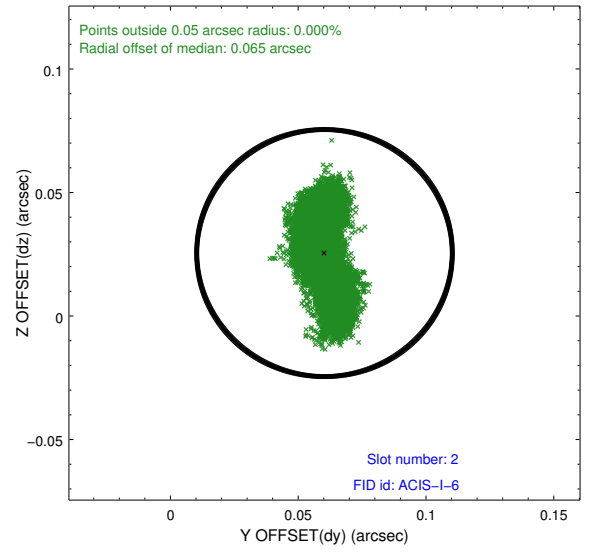
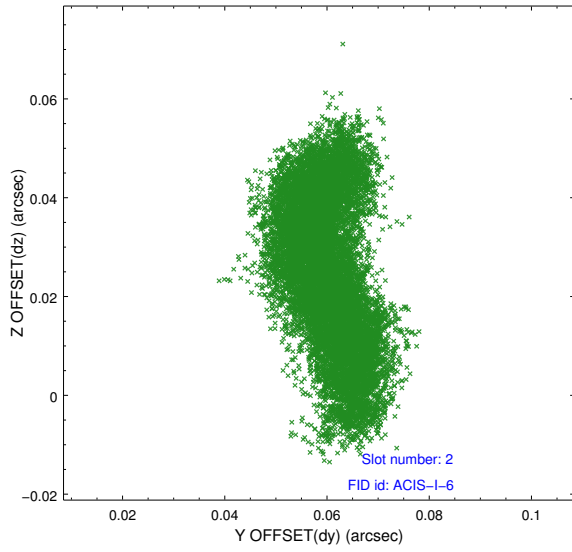
2.5.1 Slot 0



2.5.2 Slot 1



2.5.3 Slot 2



A Summary

A.1 Status

V&V Scientist	Joy Nichols
V&V Date (YYYY-MM-DD)	2012.05.24
V&V Edition	1
V&V Disposition and Status	OK
V&V Charge Time	48.7225365

A.2 Comments

Roll constraint not quite met. Roll is 0.2 degrees outside of constraint.

Joint proposal with Spitzer.