

V&V Reference Report

L2 ASCDS Version : 8.4.4

Observation 9739 - L2 Version 2
Chandra X-Ray Center

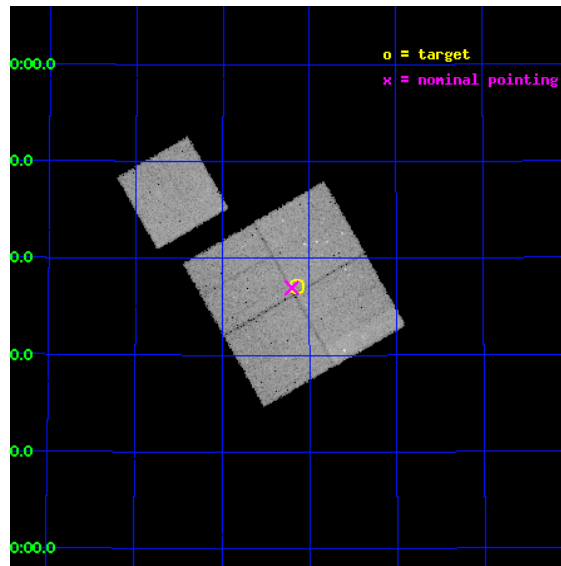
L2 Processing Date : May 22 2012

Contents

1	Front	2
2	OBI	3
2.1	OBI	3
2.1.1	Images	3
2.1.2	Bias	3
2.1.3	Parameters	4
2.1.4	Events	4
2.2	Compared Parameters	5
2.3	Aspect	6
2.4	Star Slots	9
2.4.1	Slot 3	9
2.4.2	Slot 4	10
2.4.3	Slot 5	11
2.4.4	Slot 6	12
2.4.5	Slot 7	13
2.5	FID Slots	14
2.5.1	Slot 0	14
2.5.2	Slot 1	15
2.5.3	Slot 2	16
A	Summary	17
A.1	Status	17
A.2	Comments	17

1 Front

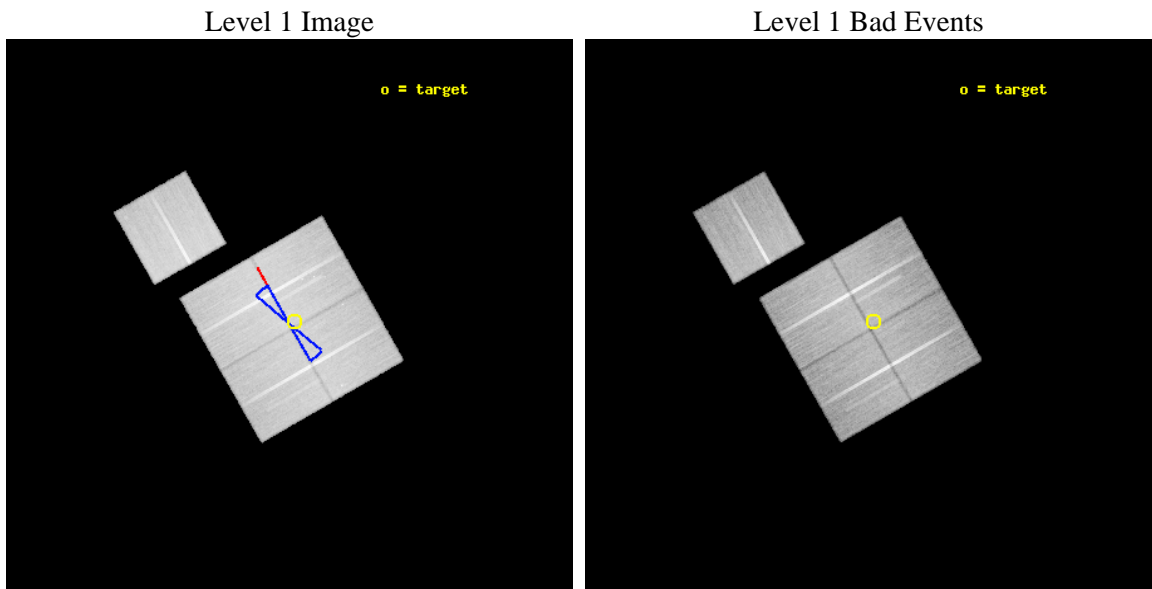
seq_num	900798	Sequence number
obs_id	9739	Observation id
title	The Evolution of Faint AGN at High Redshift	Proposal title
observer	Prof Kirpal Nandra	Principal investigator
object	AEGIS-3	Source name
dtcycle	0	
cycle	P	events from which exps? Prim/Second/Both
ra_targ	214.5375	Observer's specified target RA [deg]
dec_targ	52.617889	Observer's specified target Dec [deg]
ra_nom	214.55049202992	Nominal RA [deg]
dec_nom	52.616136743775	Nominal Dec [deg]
roll_nom	330.19836656337	Nominal Roll [deg]
revision	2	Processing version of data
ontime	43148.777490675	Sum of GTIs [s]
livetime	42585.006947092	Livetime [s]
ontime0	43155.059341669	Sum of GTIs [s]
ontime1	43151.918351412	Sum of GTIs [s]
ontime2	43155.059371531	Sum of GTIs [s]
ontime3	43148.777490675	Sum of GTIs [s]
ontime6	43155.059321821	Sum of GTIs [s]
l2events	150012	Number of level 2 events



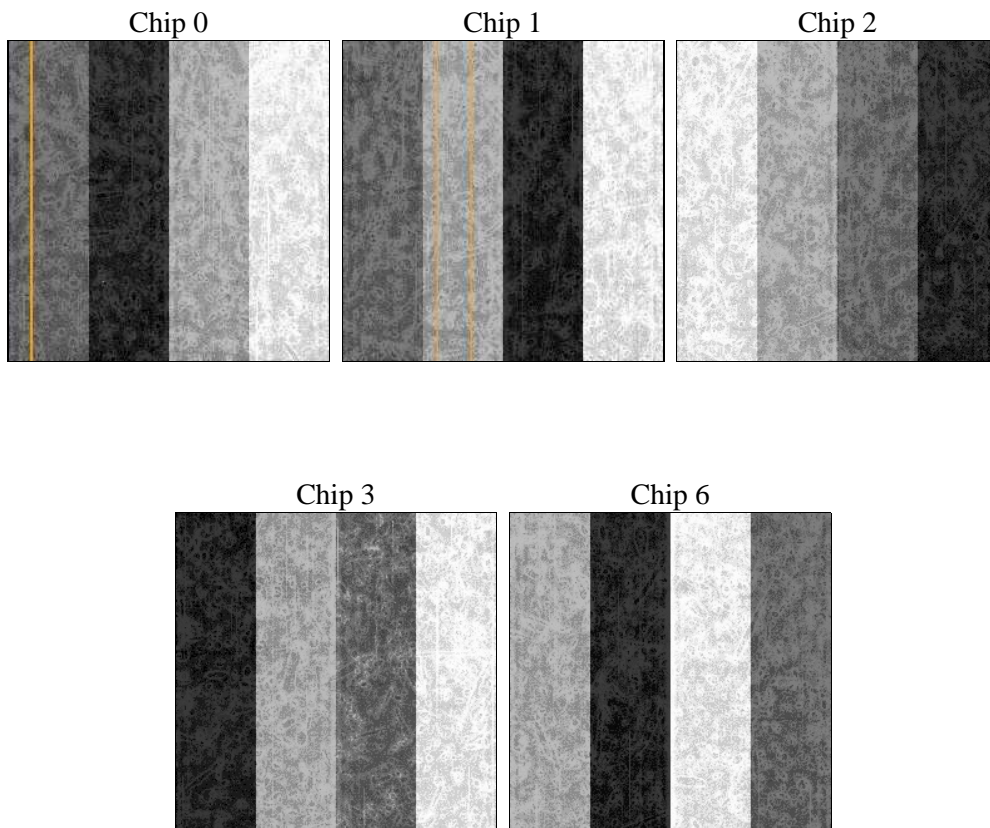
2 OBI

2.1 OBI

2.1.1 Images



2.1.2 Bias



2.1.3 Parameters

obi_num	1	Obi number	sched_exp_time	43000.000000	[s] Scheduled observation exposure time
ascdsver	8.4.4	Processing system revision	ontime	43148.777490675	Sum of GTIs [s]
caldsver	4.4.9	 	ontime0	43155.059341669	Sum of GTIs [s]
date	2012-05-22T10:39:20	Date and time of file creation	ontime1	43151.918351412	Sum of GTIs [s]
revision	2	Processing version of data	ontime2	43155.059371531	Sum of GTIs [s]
			ontime3	43148.777490675	Sum of GTIs [s]
			ontime6	43155.059321821	Sum of GTIs [s]
			l1events	1747158	Number of level 1 events

2.1.4 Events

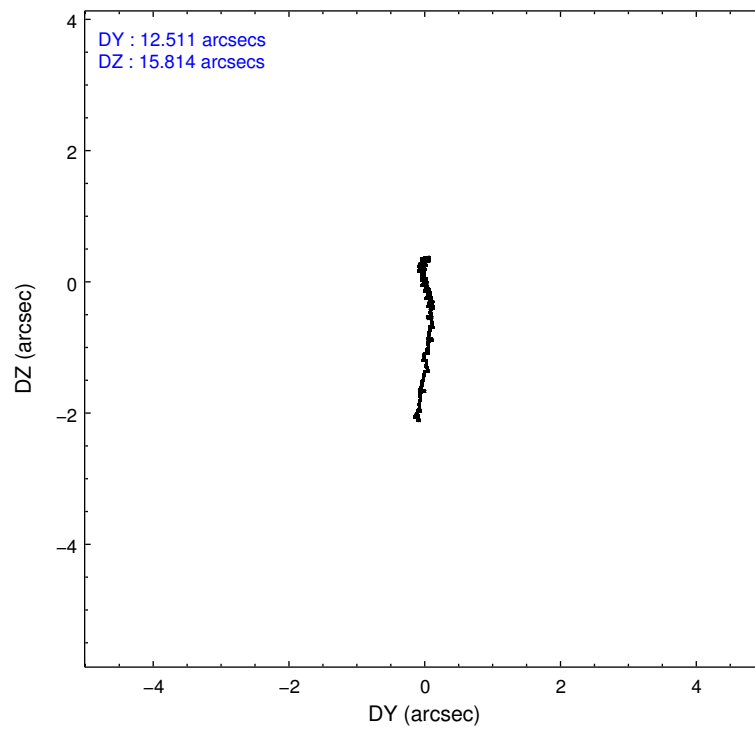
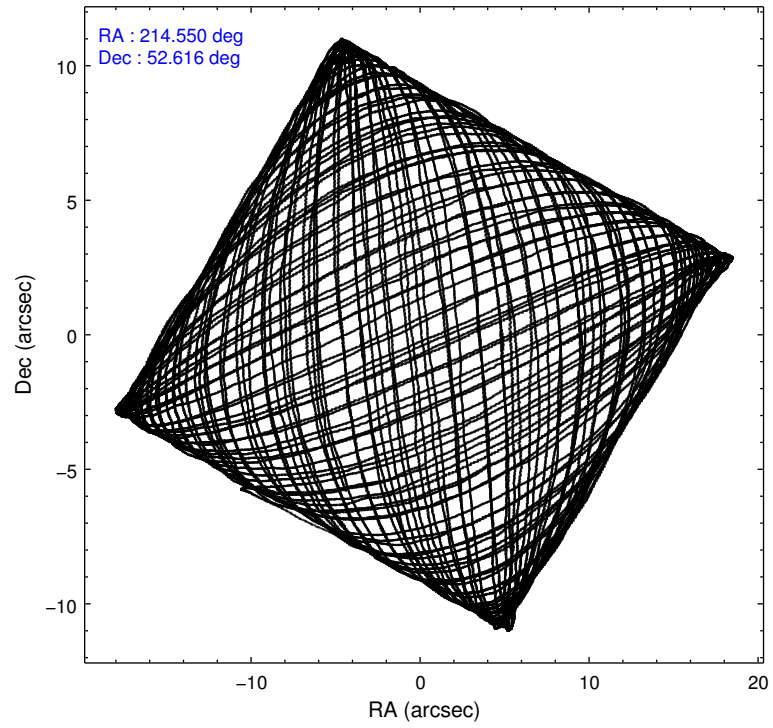
	ccd 0	ccd 1	ccd 2	ccd 3	ccd 6
level 1 events	328378	331481	376242	354272	356785
rejected events	293463	290692	341695	319662	320434
rejected %	89%	87%	90%	90%	89%

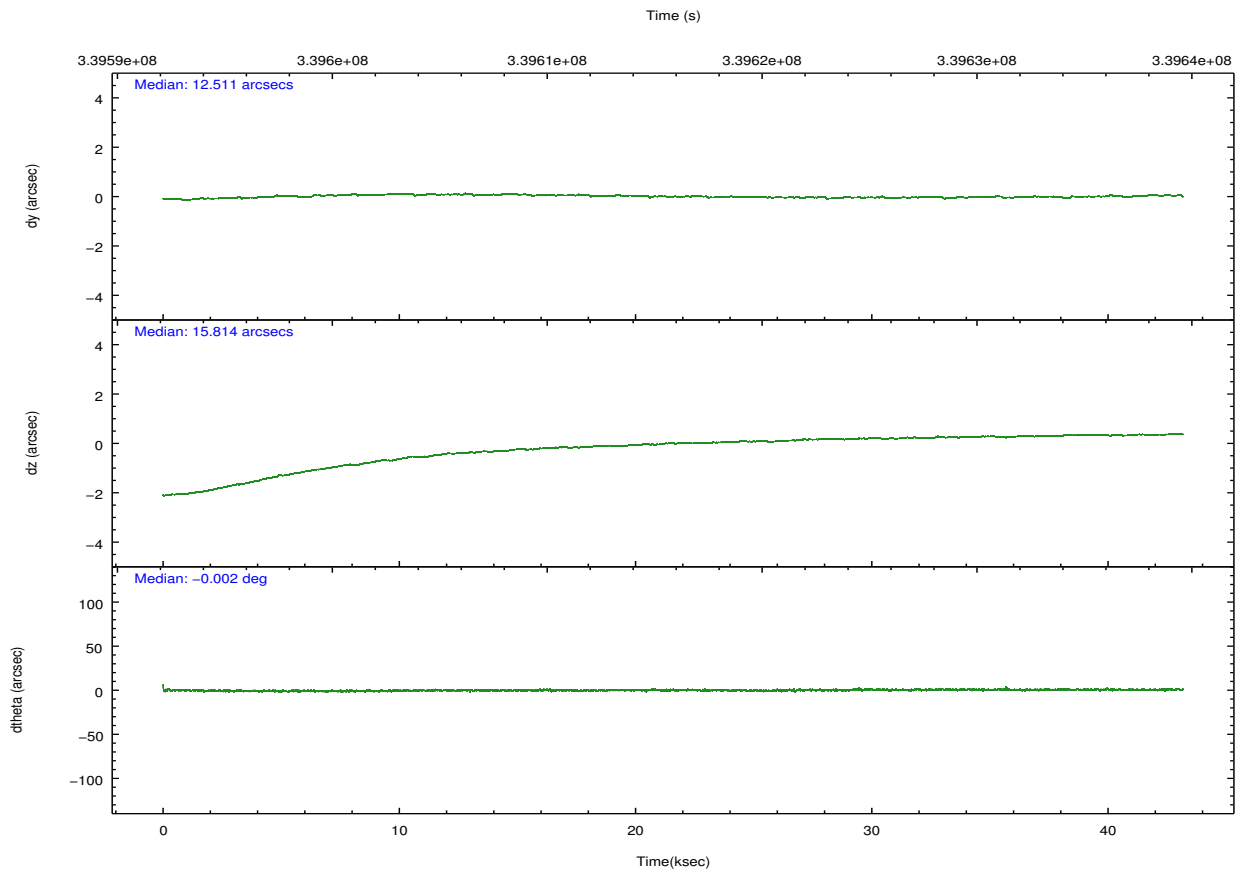
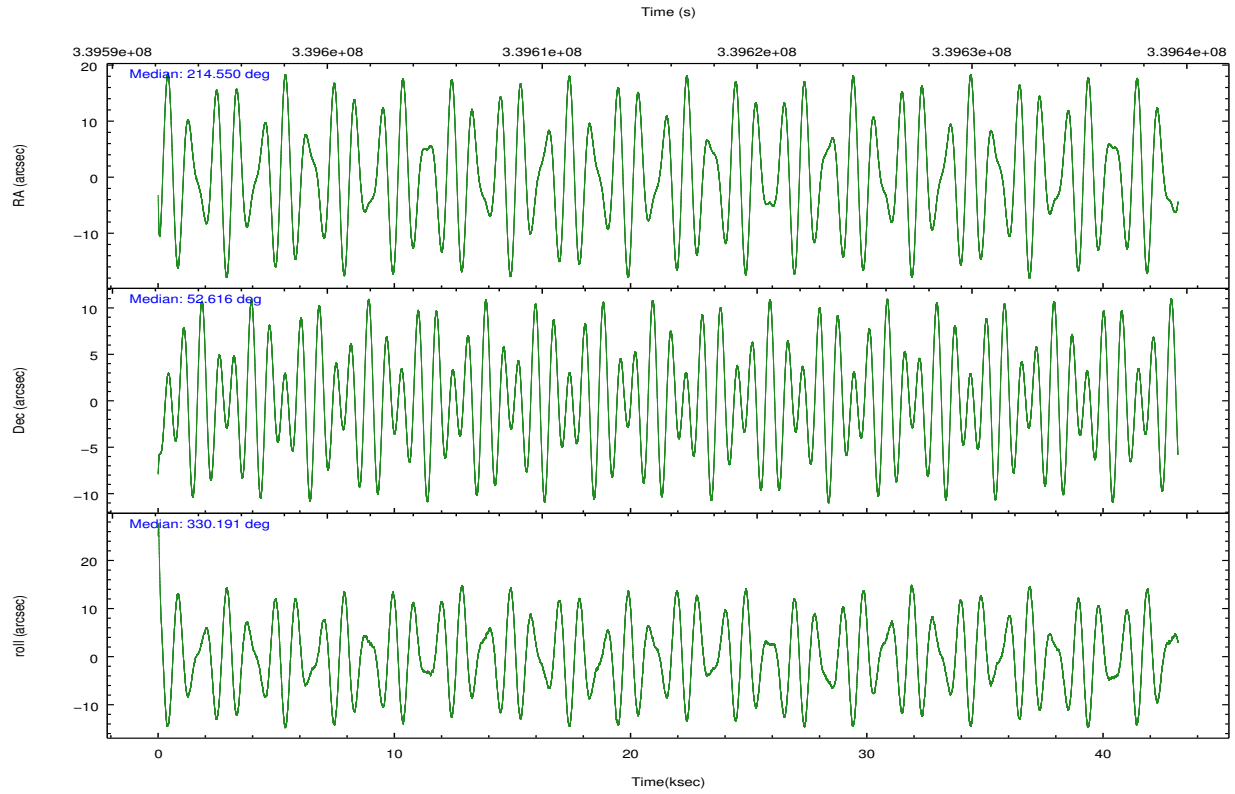
	ccd 0	ccd 1	ccd 2	ccd 3	ccd 6
grade 0 events	12122	14950	12311	12583	12611
	3%	4%	3%	3%	3%
grade 1 events	190	198	224	203	195
	0%	0%	0%	0%	0%
grade 2 events	8587	9469	8379	7659	8262
	2%	2%	2%	2%	2%
grade 3 events	4031	4159	3691	3844	3986
	1%	1%	0%	1%	1%
grade 4 events	3689	4194	3906	3846	3978
	1%	1%	1%	1%	1%
grade 5 events	12652	14005	11820	14655	14201
	3%	4%	3%	4%	3%
grade 6 events	6771	8352	6524	6940	7797
	2%	2%	1%	1%	2%
grade 7 events	280336	276154	329387	304542	305755
	85%	83%	87%	85%	85%

2.2 Compared Parameters

Parameter	Planned	Actual	Parameter	Planned	Actual
Instrument	ACIS	ACIS	Obspar format version number	7	7
Detector	ACIS-01236	ACIS-01236	Obspar file type	PREDICTED	ACTUAL
Grating	NONE	NONE	Obspar update status	NONE	UPDATED
Data mode	VFAINT	VFAINT	CCD I0 on	Y	Y
Observation mode	POINTING	POINTING	CCD I1 on	Y	Y
[deg] Pointing RA	214.505206	214.5504920299192	CCD I2 on	Y	Y
[deg] Pointing Dec	52.615924	52.61613674377521	CCD I3 on	Y	Y
[deg] Pointing Roll	330.025658	330.1983665633697	CCD S0 on	N	N
[deg] Roll angle	50.000000	50.000000	CCD S1 on	N	N
[deg] Roll tolerance	10.000000	10.000000	CCD S2 on	O1	Y
Roll constraint allows 180D rotation	Y	Y	CCD S3 on	N	N
[mm] SIM focus pos	-0.782348	-0.7809083437167272	CCD S4 on	N	N
[mm] SIM defocus	0	0.001439871863259334	CCD S5 on	N	N
[mm] SIM translation stage pos	-233.592463	-233.5874344608287	Number of optional ACIS chips dropped	0	0
[mm] SIM translation stage offset	0	-0.005018542100998502	On-chip summing requested	N	N
[s] Observation start time (MET)	339594442.184000	339593292.82442	Subarray requested	NONE	NONE
Observation start date	2008-10-05T11:46:17	2008-10-05T11:28:12	Alternating exposures requested	N	N
[s] Observation end time (MET)	339637442.184000	339638577.83915	[s] Primary exposure time	0.000000	3.1
Observation end date	2008-10-05T23:42:57	2008-10-06T00:02:57			
Read mode	TIMED	TIMED			

2.3 Aspect



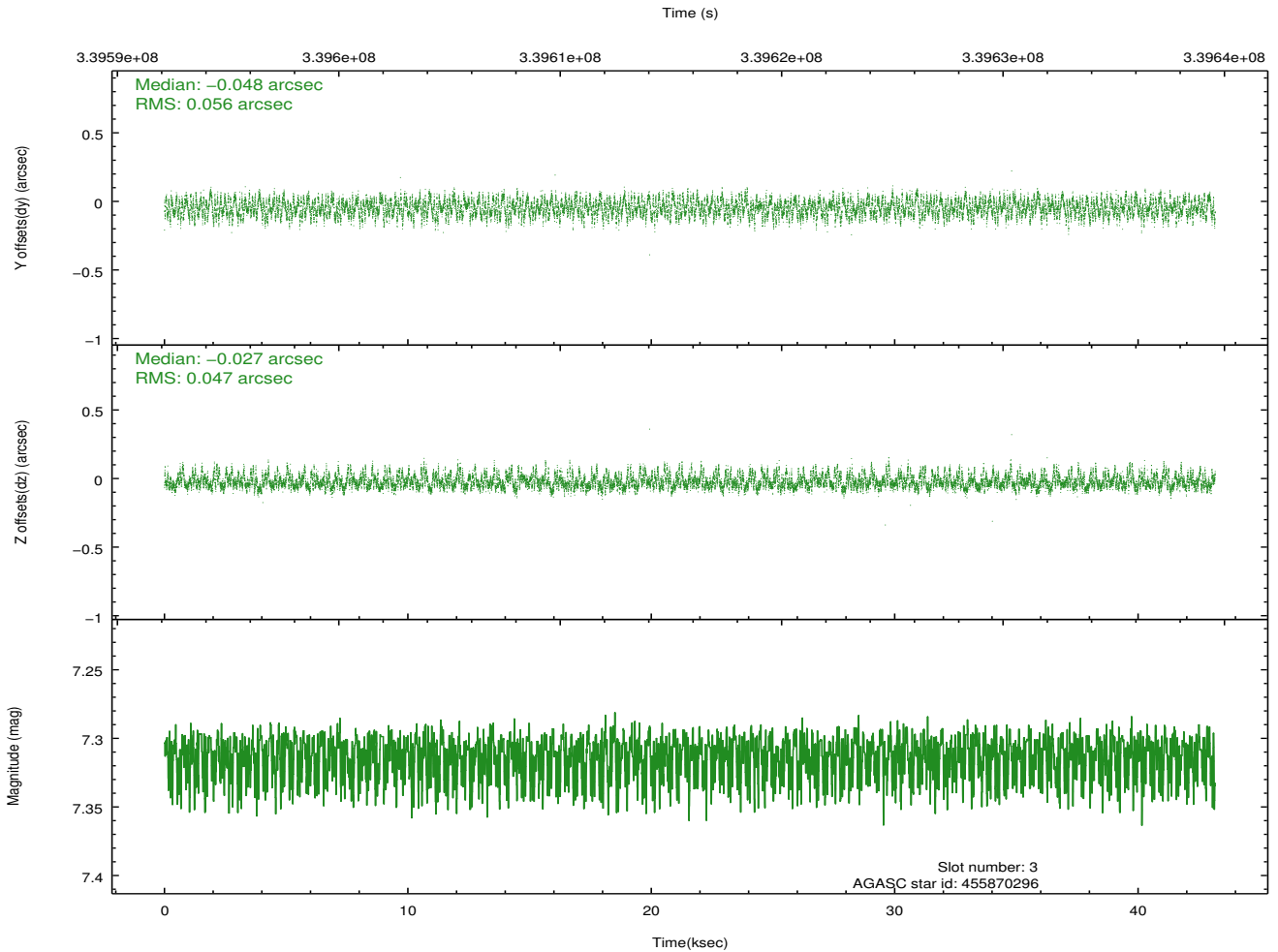
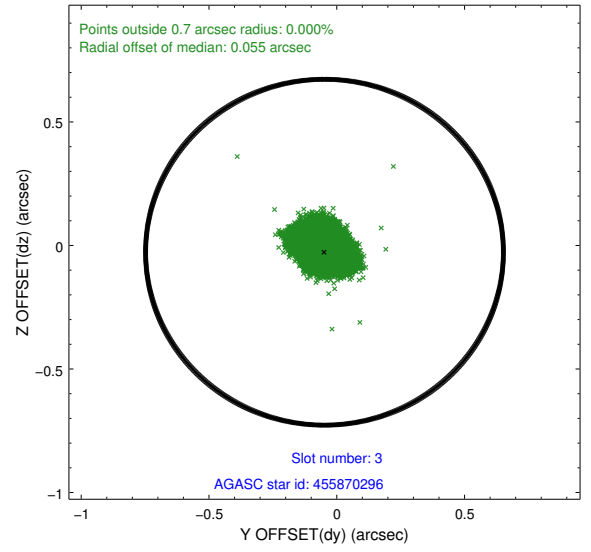
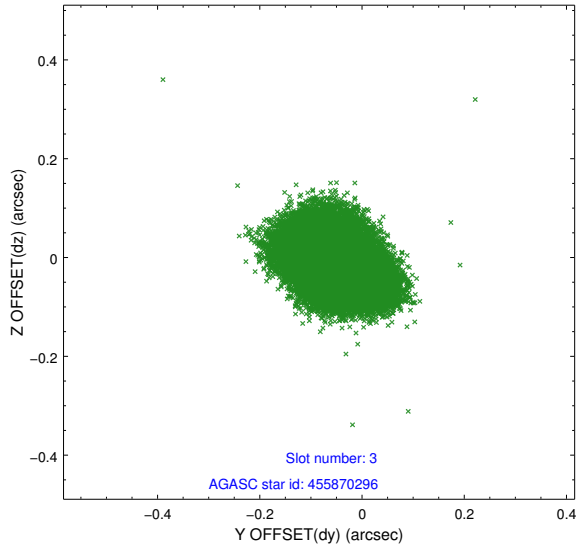


Slot Statistics

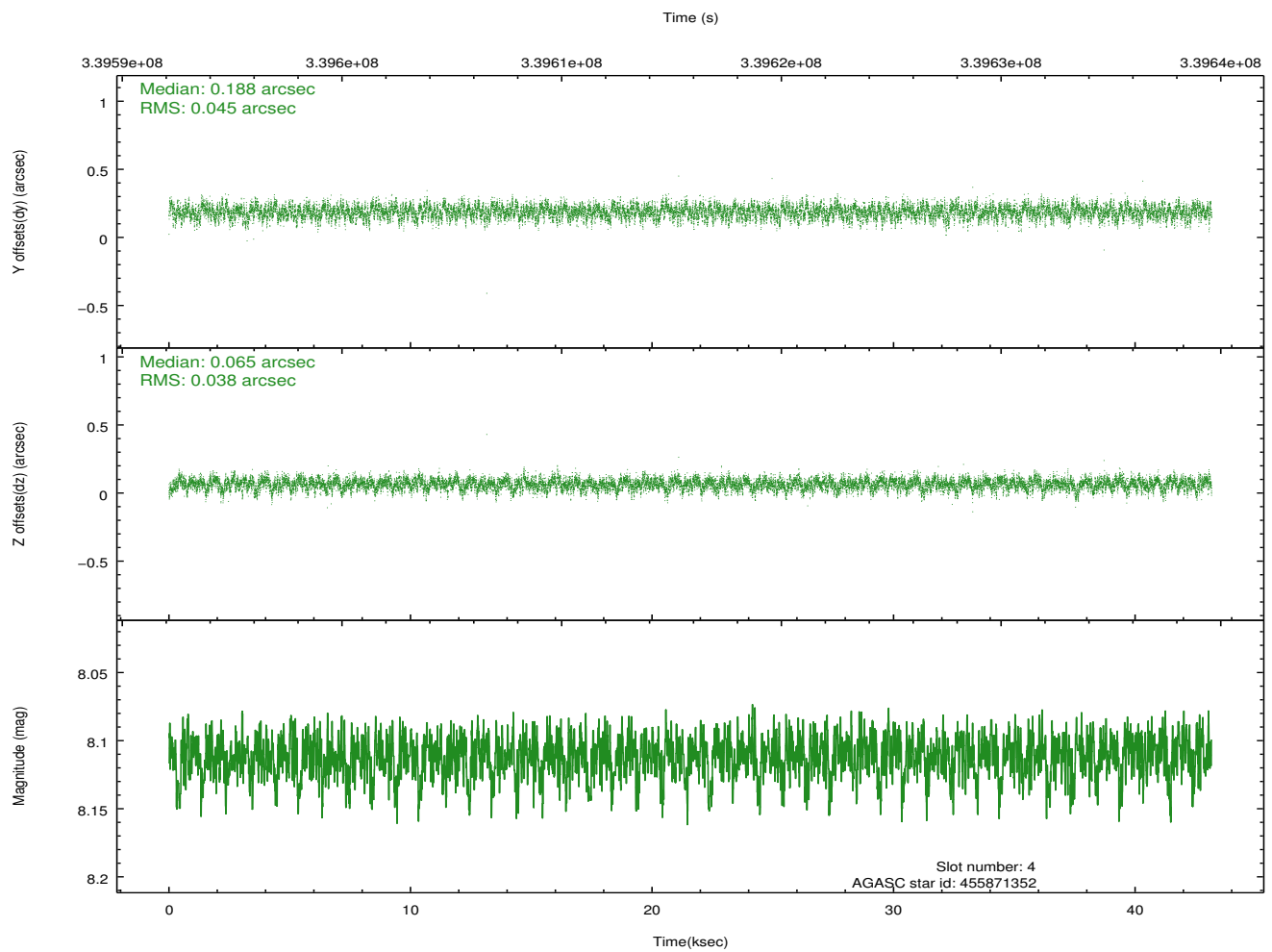
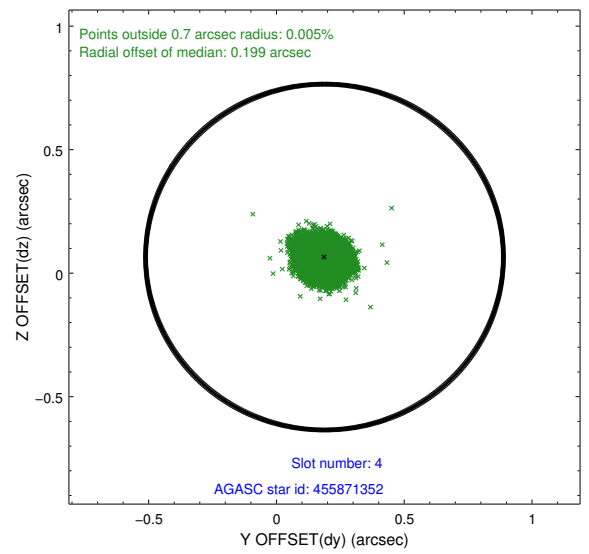
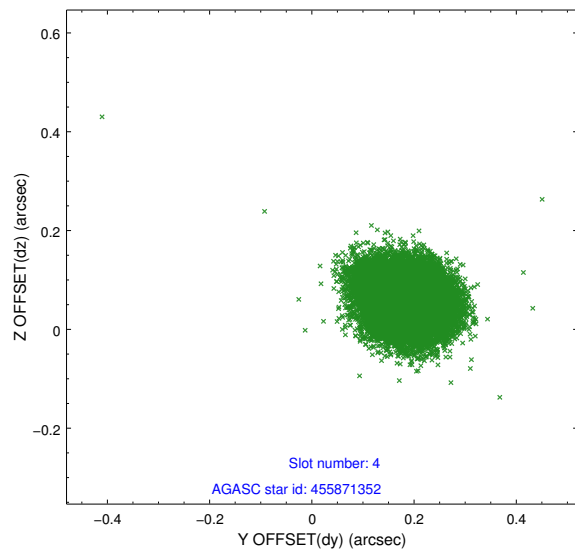
slot	status	id	mag	n_pts	med_dy	med_dz	dr1	dr2	ra	dec	mean_y	mean_z
0	FID	ACIS-I-1	7.03	10529	-0.021	-0.038	0.027	0.090	0.000000	0.000000	926.99	-839.18
1	FID	ACIS-I-4	6.96	10528	0.127	0.058	0.020	0.055	0.000000	0.000000	2147.19	1060.69
2	FID	ACIS-I-5	7.00	10528	-0.204	0.050	0.013	0.036	0.000000	0.000000	-1821.18	1058.56
3	GUIDE	455870296	7.31	21056	-0.048	-0.027	0.079	0.123	214.629779	52.033323	1287.16	-1678.40
4	GUIDE	455871352	8.11	21045	0.188	0.065	0.062	0.101	215.099961	52.172669	1932.59	-721.08
5	GUIDE	505806936	7.01	21057	-0.072	0.056	0.065	0.109	213.820815	52.535927	-1157.49	-991.91
6	GUIDE	505812088	8.14	21052	0.151	0.047	0.073	0.117	214.186617	53.263562	-1759.81	1678.31
7	GUIDE	505812376	7.68	21055	-0.225	-0.149	0.053	0.084	214.039537	52.937930	-1456.16	502.25

2.4 Star Slots

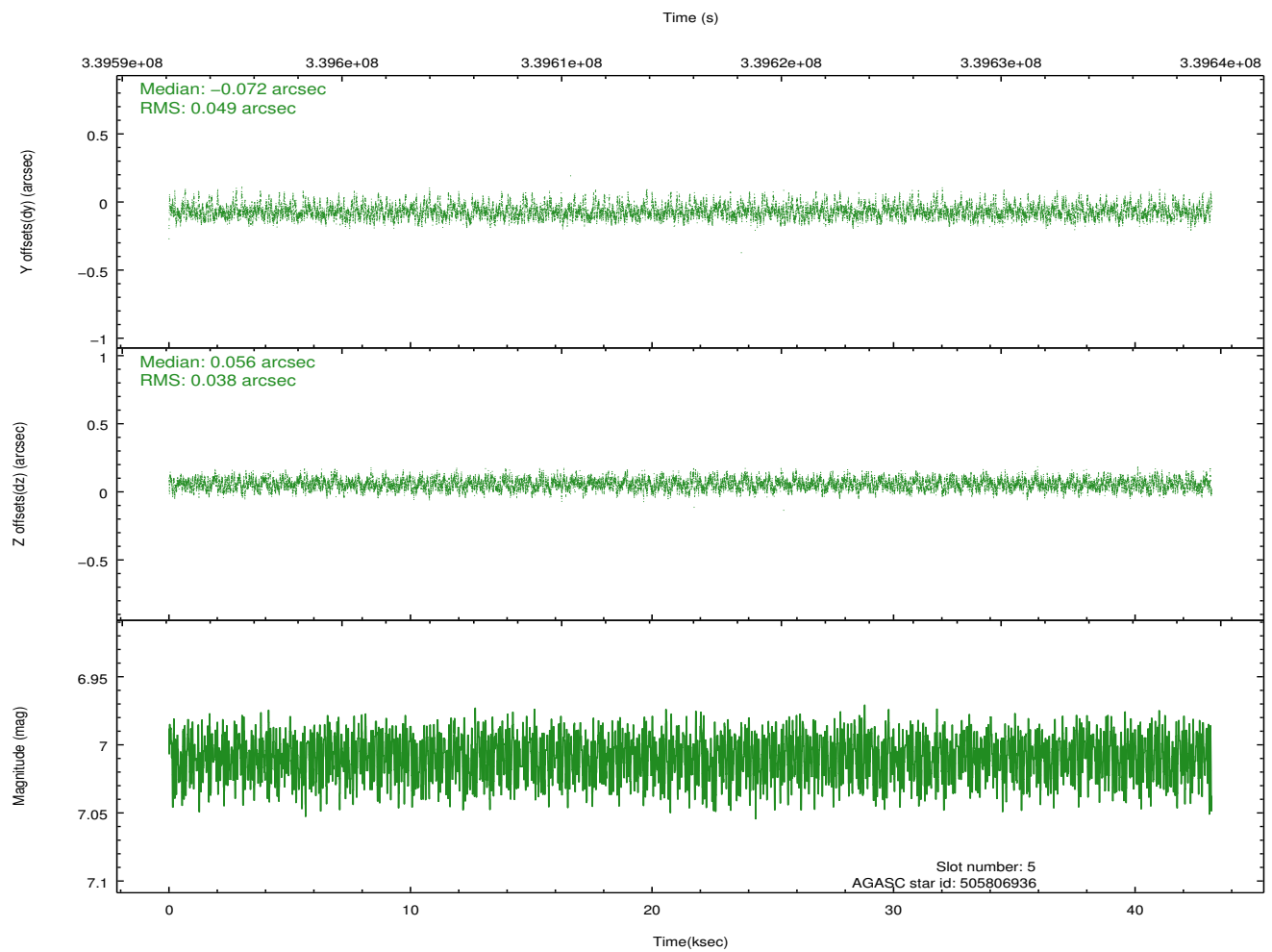
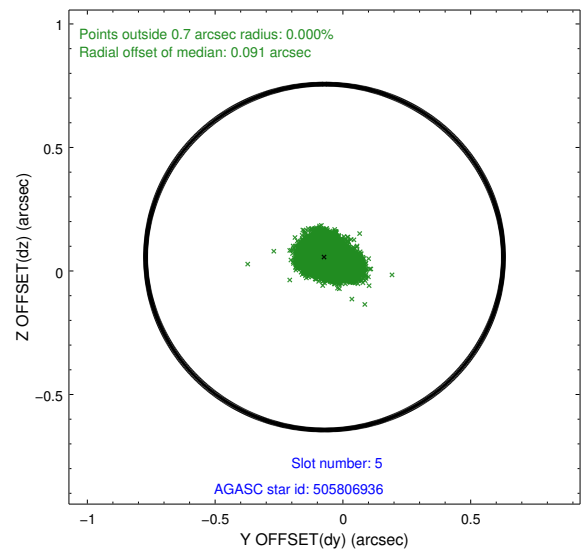
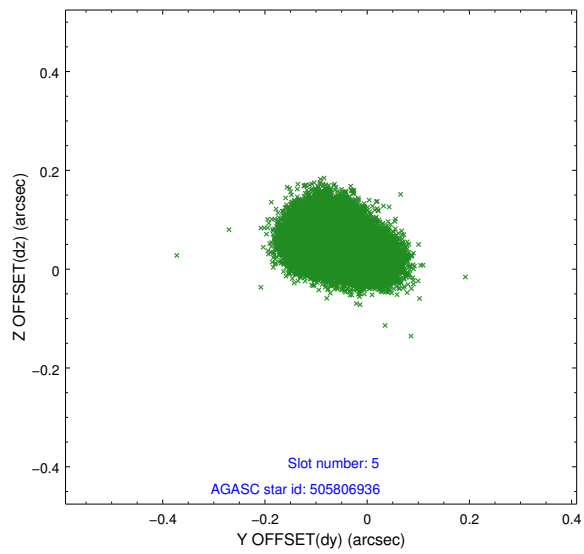
2.4.1 Slot 3



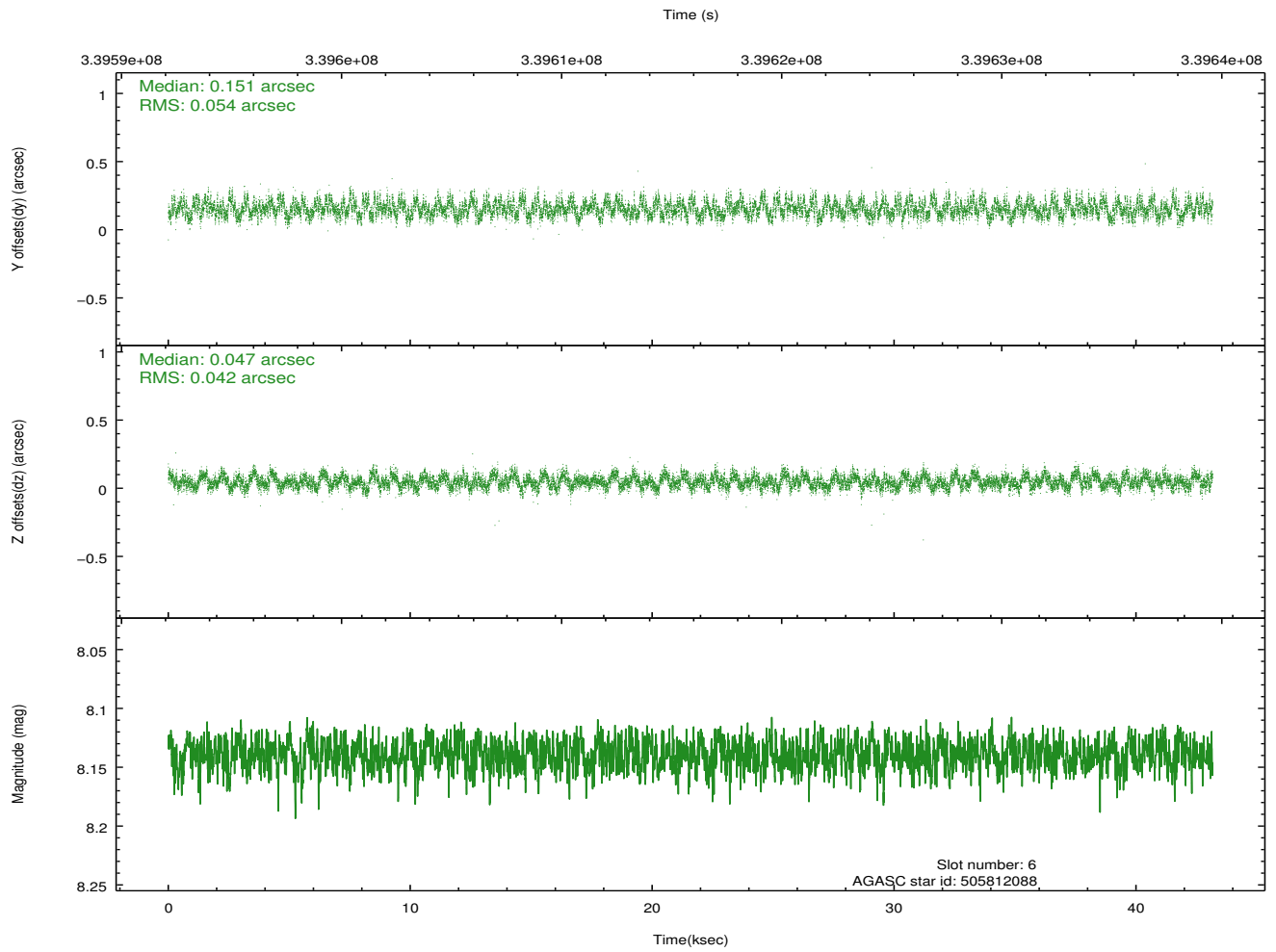
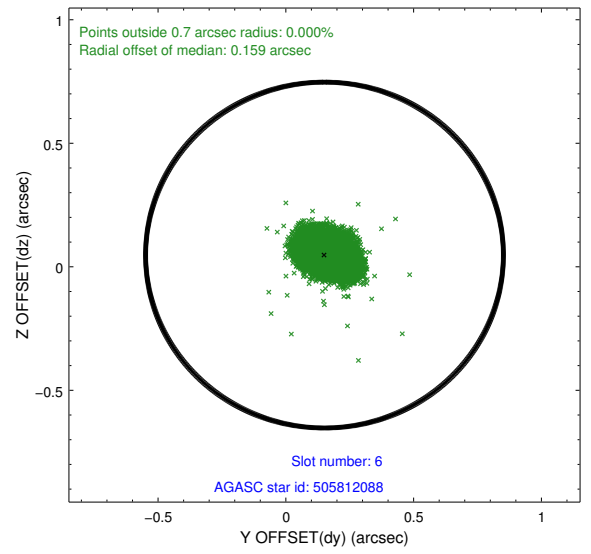
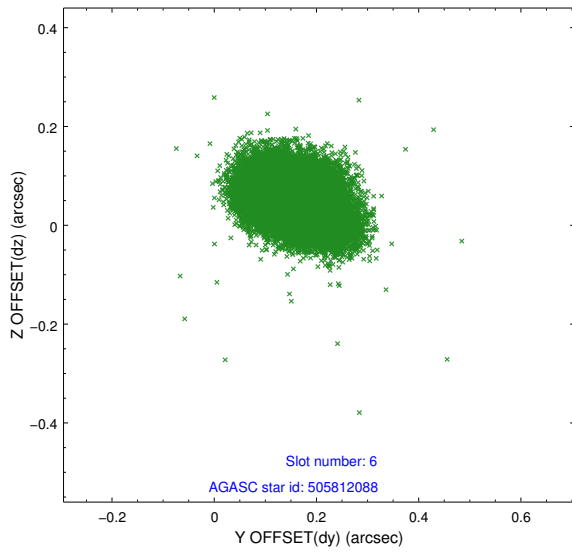
2.4.2 Slot 4



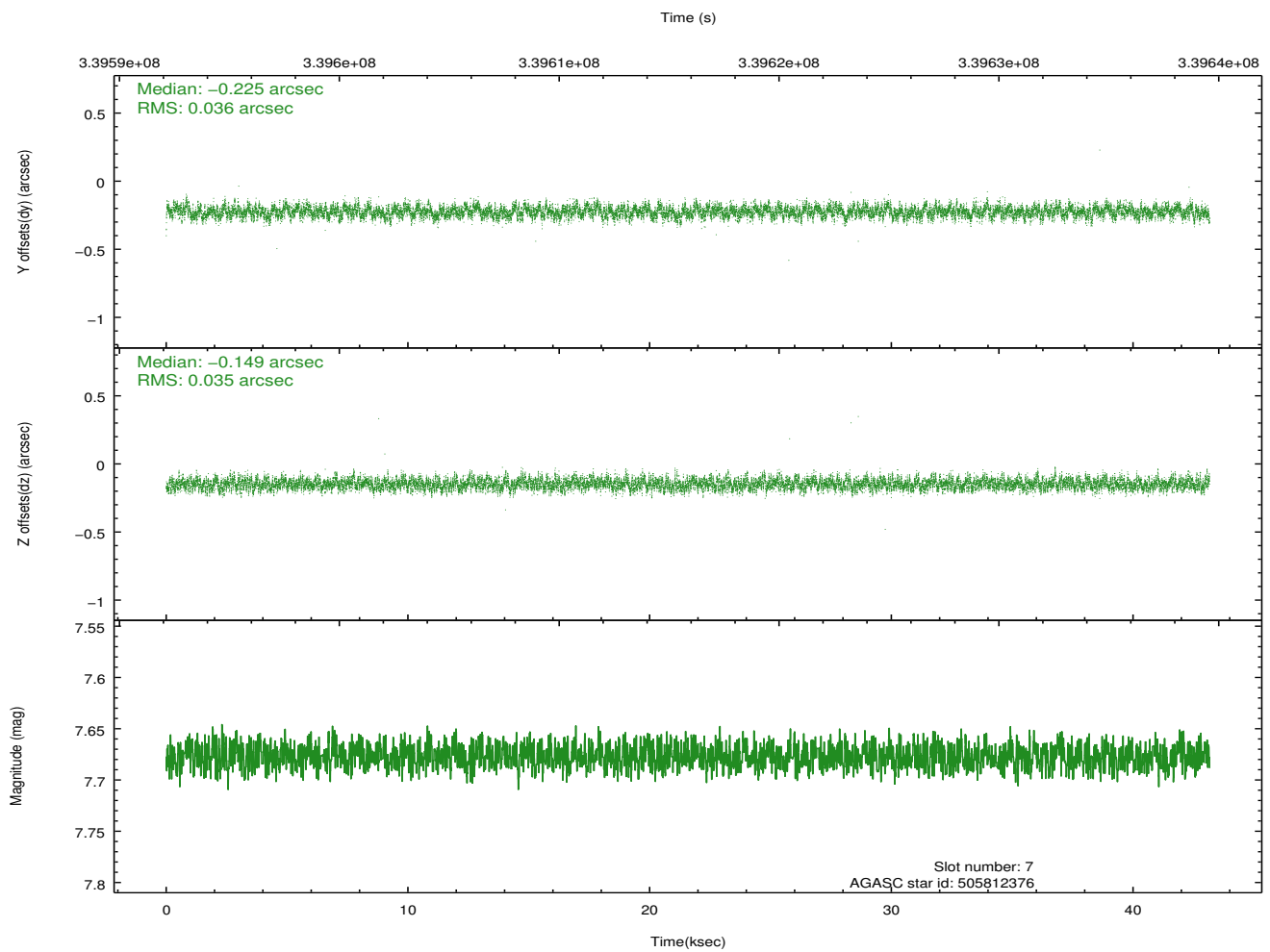
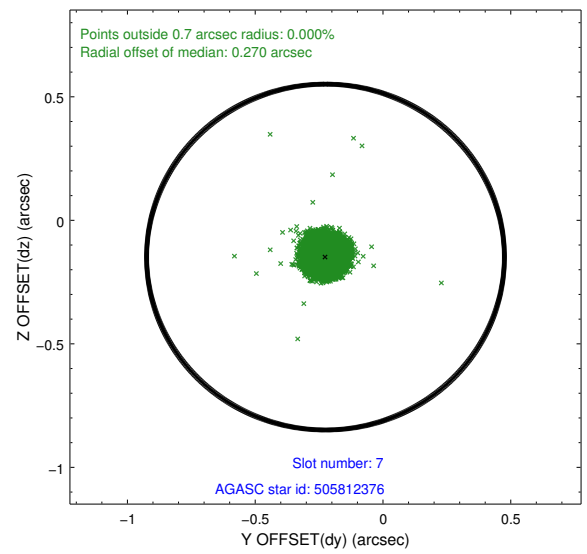
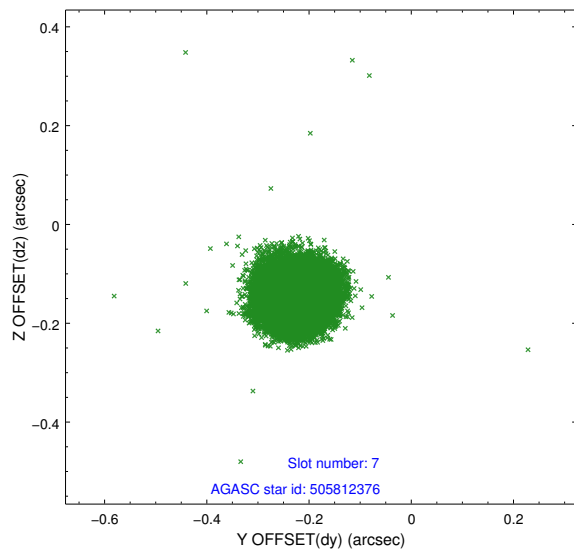
2.4.3 Slot 5



2.4.4 Slot 6

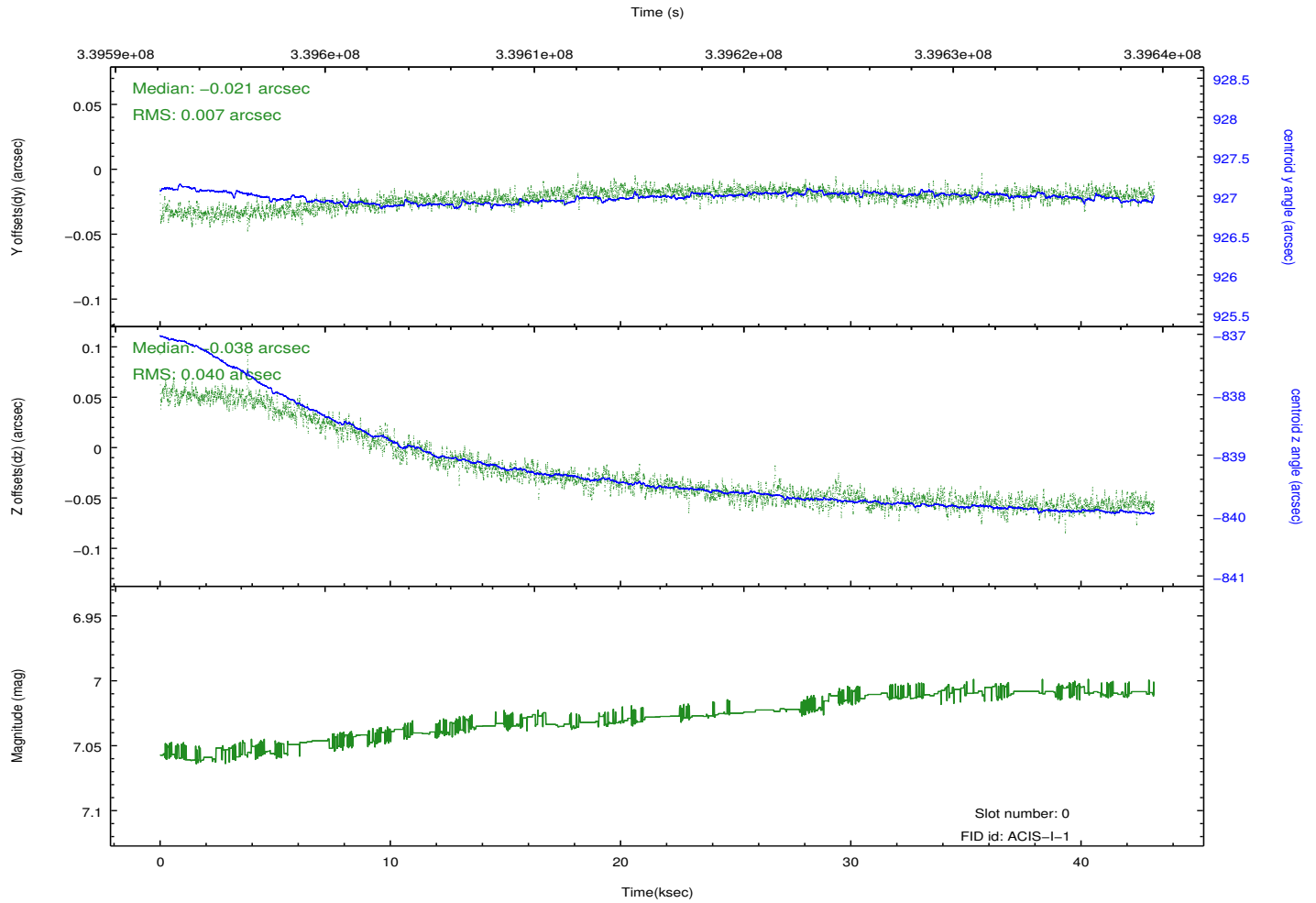
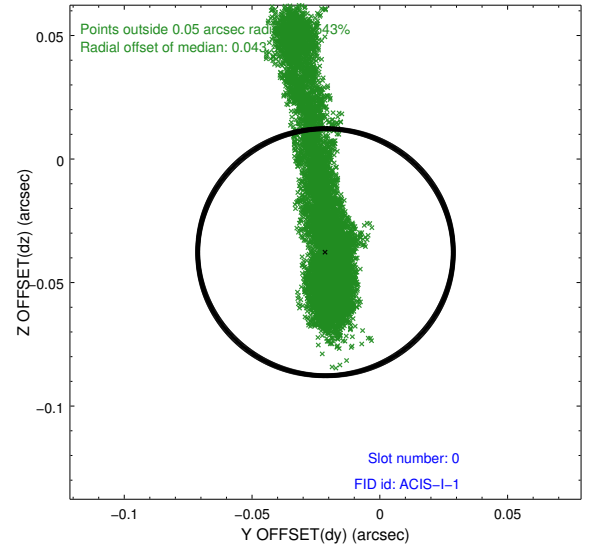
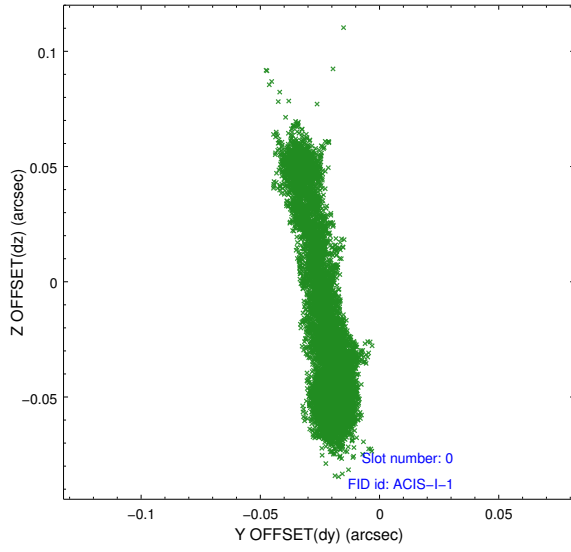


2.4.5 Slot 7

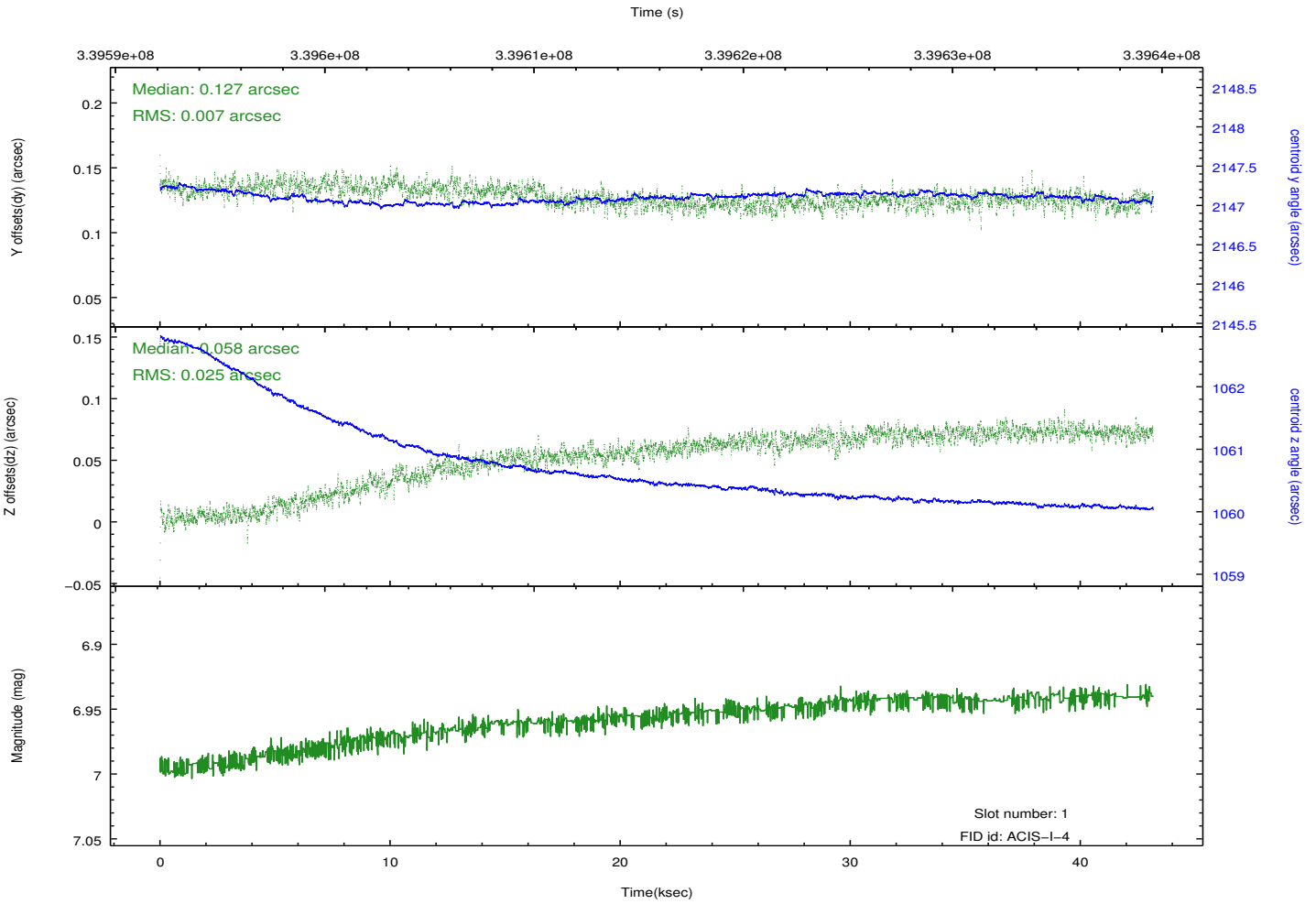
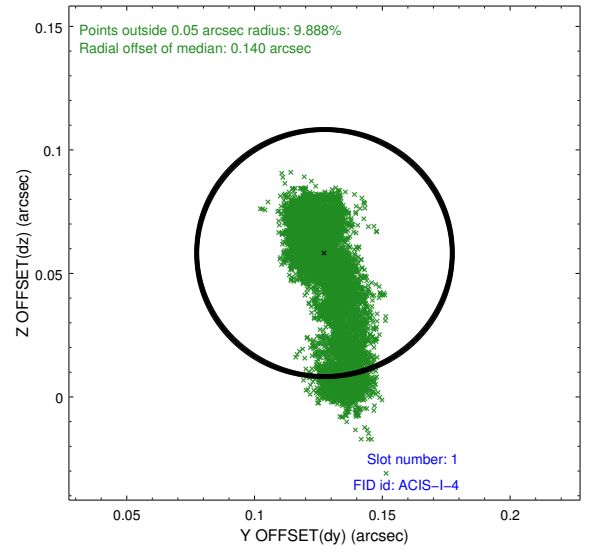
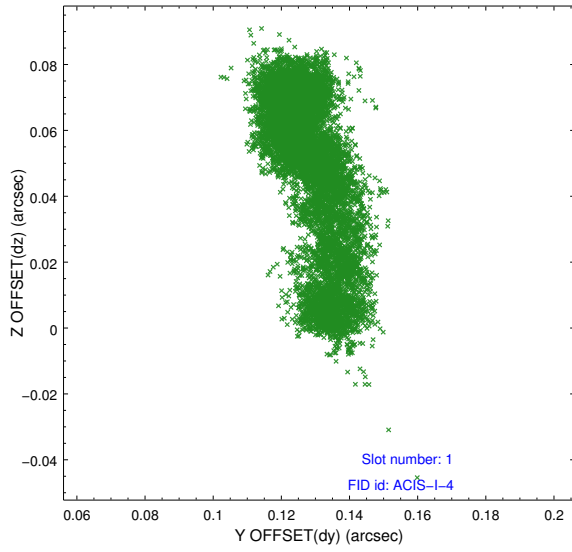


2.5 FID Slots

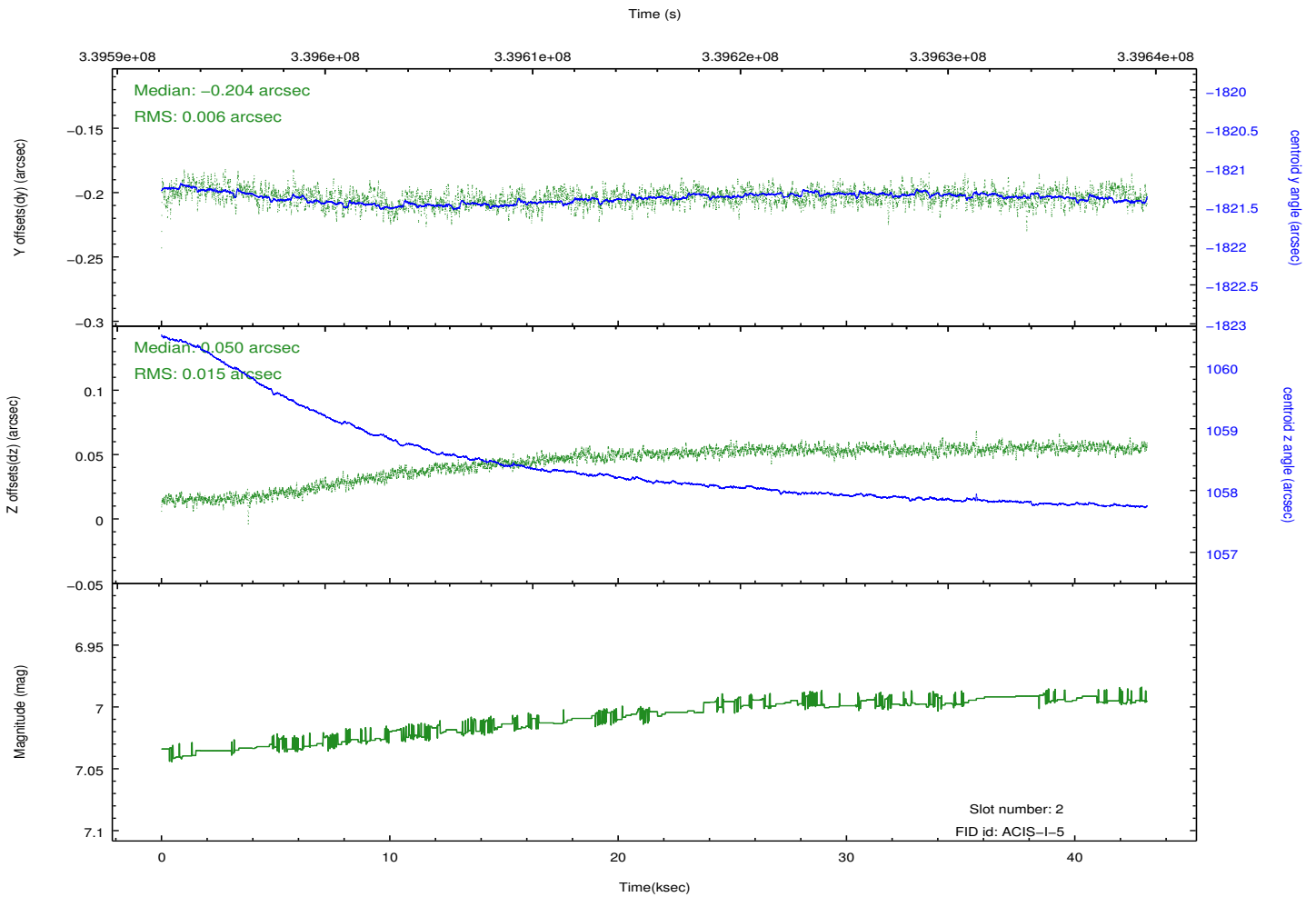
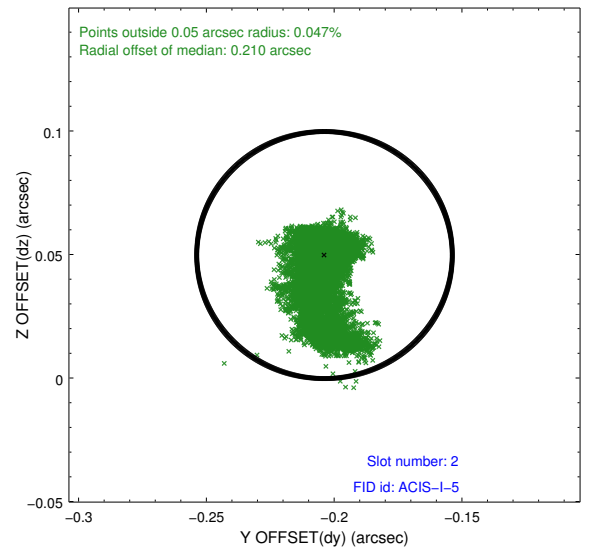
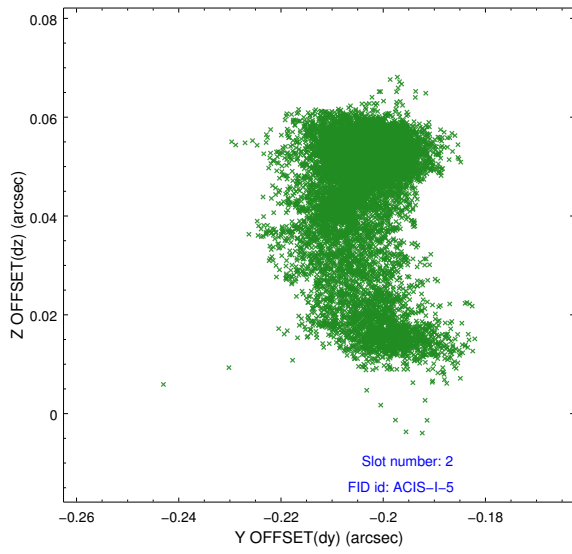
2.5.1 Slot 0



2.5.2 Slot 1



2.5.3 Slot 2



A Summary

A.1 Status

V&V Scientist	Jen Lauer
V&V Date (YYYY-MM-DD)	2012.05.30
V&V Edition	1
V&V Disposition and Status	OK
V&V Charge Time	43.1487774

A.2 Comments

Coordinated with Spitzer. Roll constraint met.