

V&V Reference Report

L2 ASCDS Version : 8.4.4

Observation 9769 - L2 Version 2
Chandra X-Ray Center

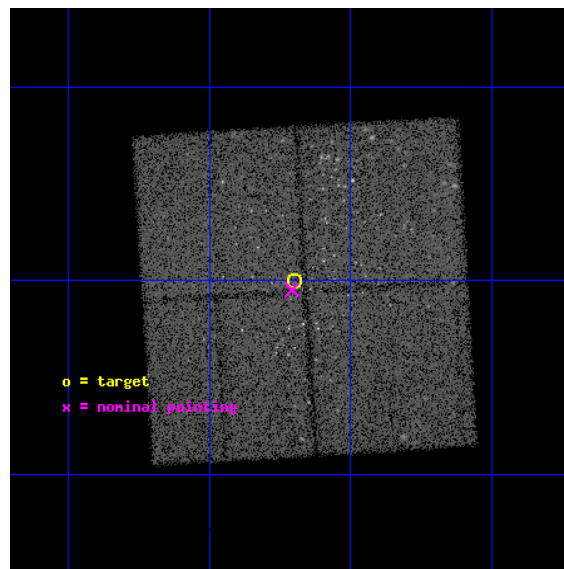
L2 Processing Date : May 12 2012

Contents

1	Front	2
2	OBI	3
2.1	OBI	3
2.1.1	Images	3
2.1.2	Bias	3
2.1.3	Parameters	4
2.1.4	Events	4
2.2	Compared Parameters	5
2.3	Aspect	6
2.4	Star Slots	9
2.4.1	Slot 3	9
2.4.2	Slot 4	10
2.4.3	Slot 5	11
2.4.4	Slot 6	12
2.4.5	Slot 7	13
2.5	FID Slots	14
2.5.1	Slot 0	14
2.5.2	Slot 1	15
2.5.3	Slot 2	16
A	Summary	17
A.1	Status	17
A.2	Comments	17

1 Front

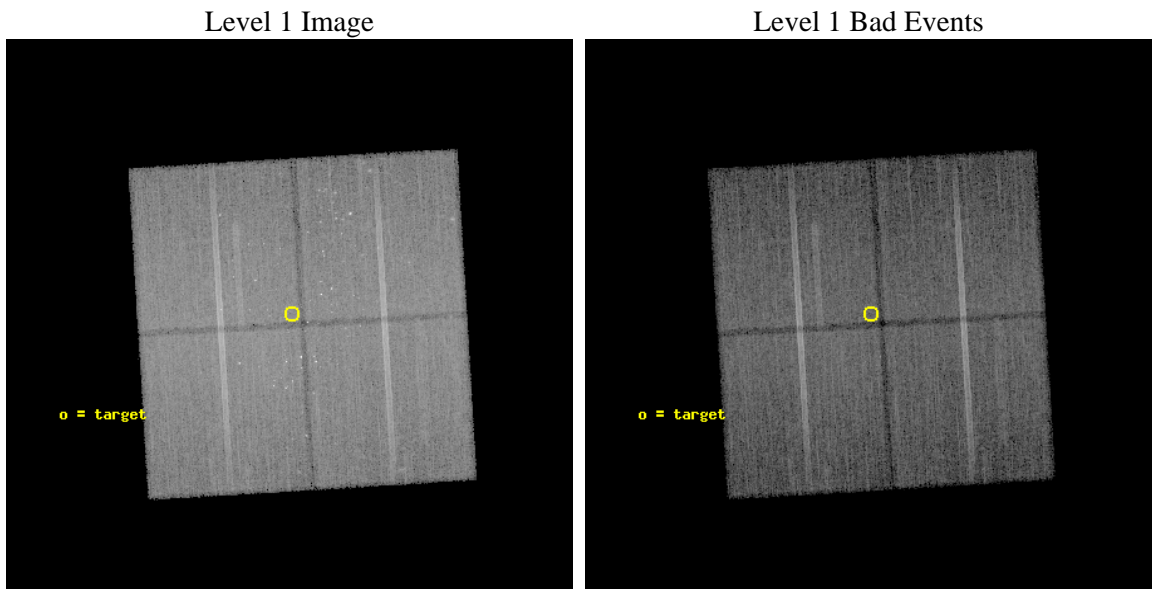
seq_num	200526	Sequence number
obs_id	9769	Observation id
title	The physics of flares in young stellar objects	Proposal title
observer	Dr Giuseppina Micela	Principal investigator
object	NGC 2264 field 1	Source name
dtcycle	0	
cycle	P	events from which exps? Prim/Second/Both
ra_targ	100.3	Observer's specified target RA [deg]
dec_targ	9.5	Observer's specified target Dec [deg]
ra_nom	100.30196385892	Nominal RA [deg]
dec_nom	9.4921653255201	Nominal Dec [deg]
roll_nom	266.56281067702	Nominal Roll [deg]
revision	2	Processing version of data
ontime	30150.55926156	Sum of GTIs [s]
livetime	29756.620008289	Livetime [s]
ontime0	30153.70023191	Sum of GTIs [s]
ontime1	30150.55926156	Sum of GTIs [s]
ontime2	30150.559271634	Sum of GTIs [s]
ontime3	30150.55926156	Sum of GTIs [s]
l2events	138390	Number of level 2 events



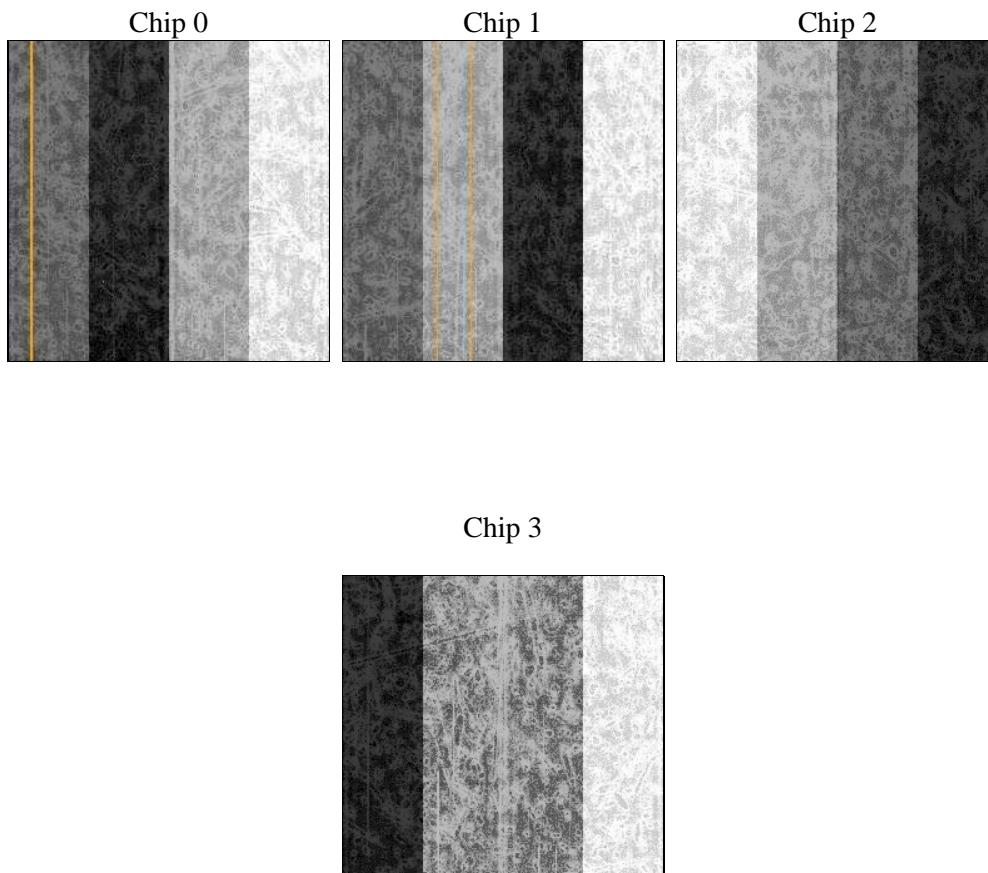
2 OBI

2.1 OBI

2.1.1 Images



2.1.2 Bias



2.1.3 Parameters

obi_num	0	Obi number	sched_exp_time	30000.000000	[s] Scheduled observation exposure time
ascdsver	8.4.4	Processing system revision	ontime	30150.55926156	Sum of GTIs [s]
caldbver	4.4.9	 	ontime0	30153.70023191	Sum of GTIs [s]
date	2012-05-12T02:32:36	Date and time of file creation	ontime1	30150.55926156	Sum of GTIs [s]
revision	2	Processing version of data	ontime2	30150.559271634	Sum of GTIs [s]
			ontime3	30150.55926156	Sum of GTIs [s]
			l1events	1114564	Number of level 1 events

2.1.4 Events

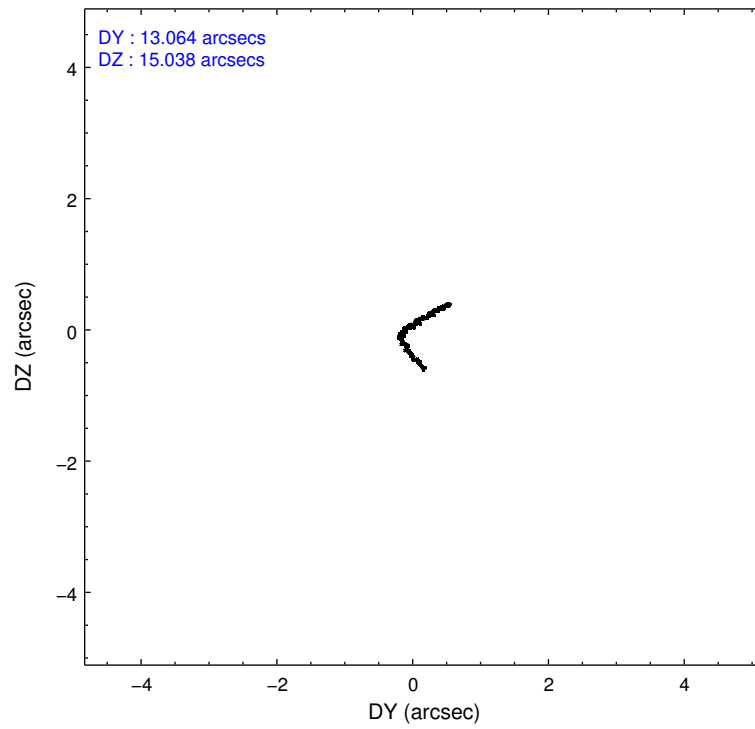
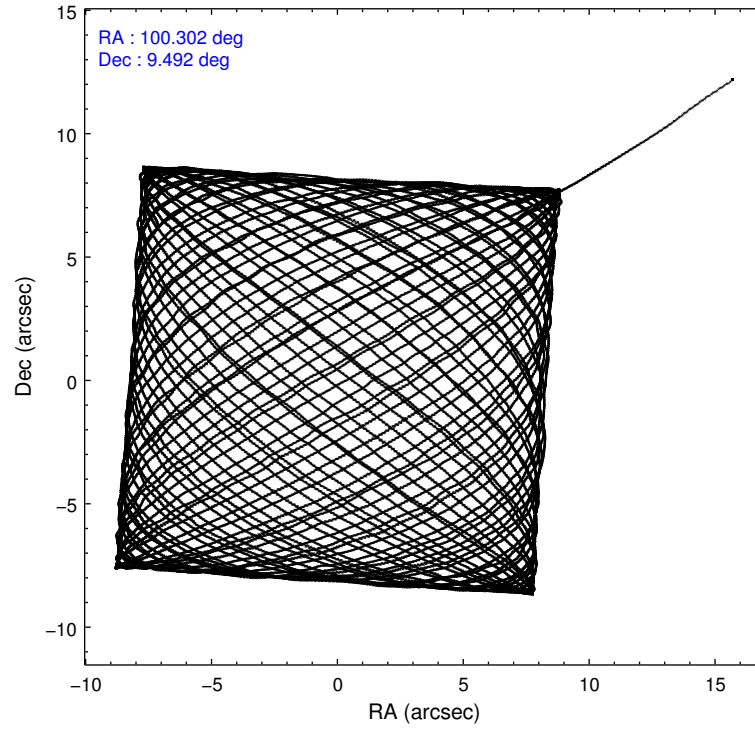
	ccd 0	ccd 1	ccd 2	ccd 3
level 1 events	269077	272641	288570	284276
rejected events	231296	226748	249054	247503
rejected %	85%	83%	86%	87%

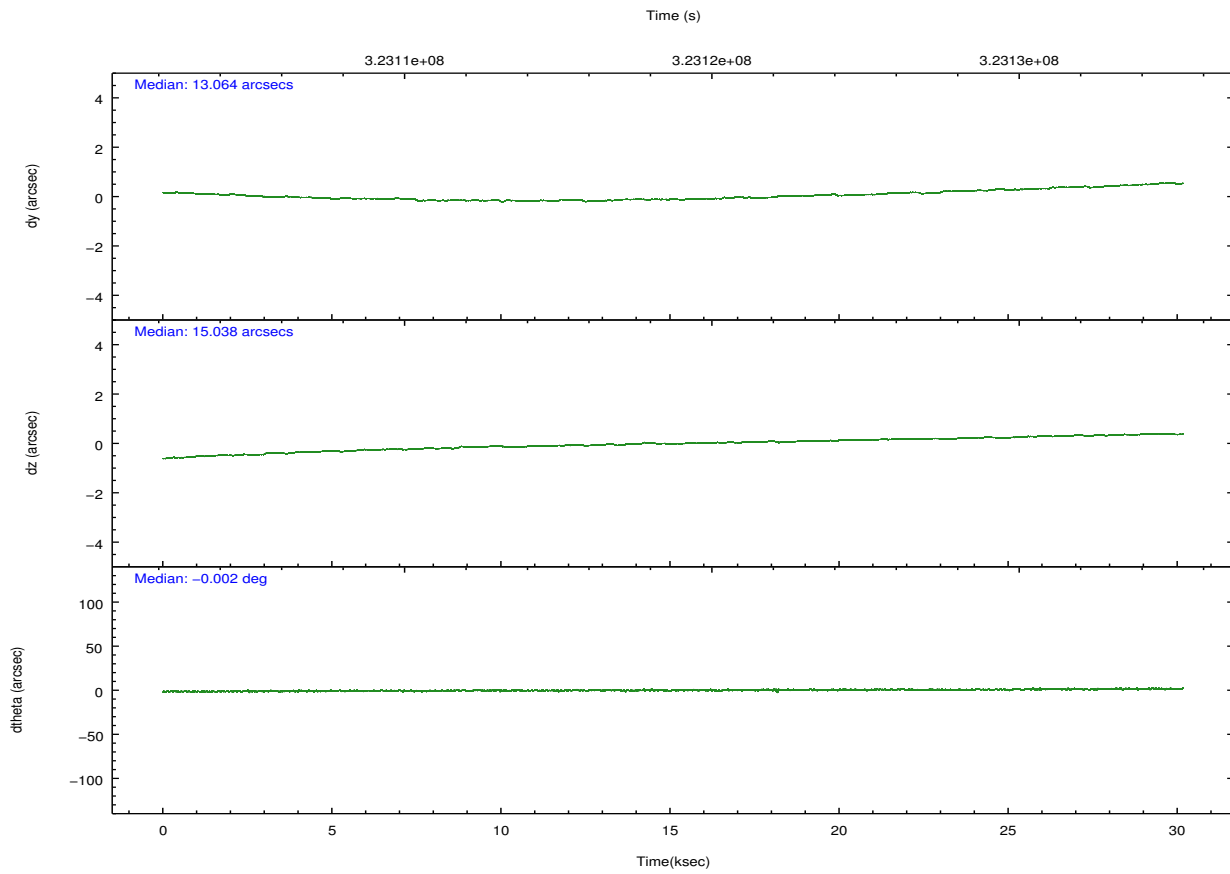
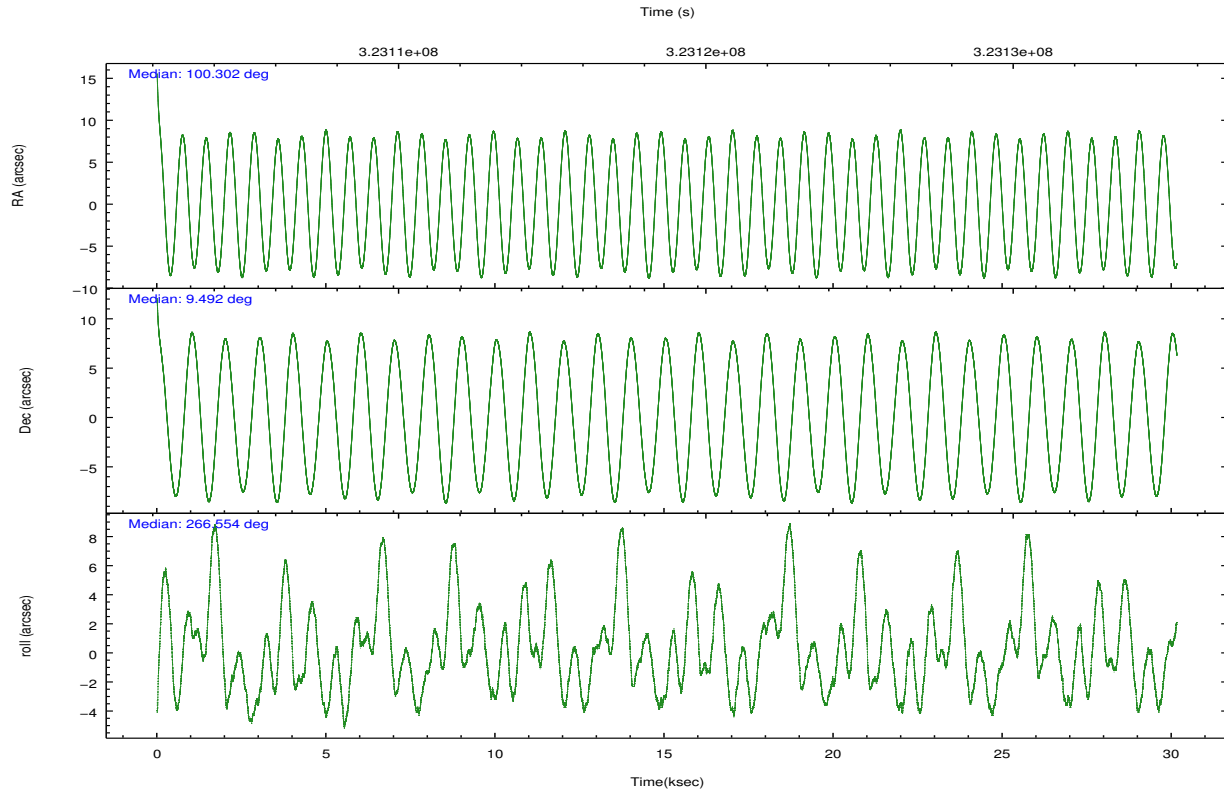
	ccd 0	ccd 1	ccd 2	ccd 3
grade 0 events	16978	21350	19444	16860
	6%	7%	6%	5%
grade 1 events	193	202	246	223
	0%	0%	0%	0%
grade 2 events	8058	9758	7874	7167
	2%	3%	2%	2%
grade 3 events	3278	3825	3220	3392
	1%	1%	1%	1%
grade 4 events	3177	3706	3337	3267
	1%	1%	1%	1%
grade 5 events	12000	12662	11717	13802
	4%	4%	4%	4%
grade 6 events	6450	7450	5807	6252
	2%	2%	2%	2%
grade 7 events	218943	213688	236925	233313
	81%	78%	82%	82%

2.2 Compared Parameters

Parameter	Planned	Actual	Parameter	Planned	Actual
Instrument	ACIS	ACIS	Obspar format version number	7	7
Detector	ACIS-0123	ACIS-0123	Obspar file type	PREDICTED	ACTUAL
Grating	NONE	NONE	Obspar update status	NONE	UPDATED
Data mode	FAINT	FAINT	Number of optional ACIS chips dropped	0	0
Observation mode	POINTING	POINTING	On-chip summing requested	N	N
[deg] Pointing RA	100.289398	100.3019638589188	Subarray requested	NONE	NONE
[deg] Pointing Dec	9.516693	9.492165325520144	Alternating exposures requested	N	N
[deg] Pointing Roll	266.356200	266.5628106770152	[s] Primary exposure time	0.000000	3.1
[s] Window start time (MET)	321580925.184000	321580925.184000			
[s] Window stop time (MET)	323305265.184000	323305265.184000			
[mm] SIM focus pos	-0.782348	-0.7809083437167272			
[mm] SIM defocus	0	0.001439871863259334			
[mm] SIM translation stage pos	-233.592463	-233.5874344608287			
[mm] SIM translation stage offset	0	-0.005018542100998502			
[s] Observation start time (MET)	323103818.184000	323102839.58282			
Observation start date	2008-03-28T15:02:33	2008-03-28T14:47:19			
[s] Observation end time (MET)	323133818.184000	323134592.03437			
Observation end date	2008-03-28T23:22:33	2008-03-28T23:36:32			
Read mode	TIMED	TIMED			

2.3 Aspect





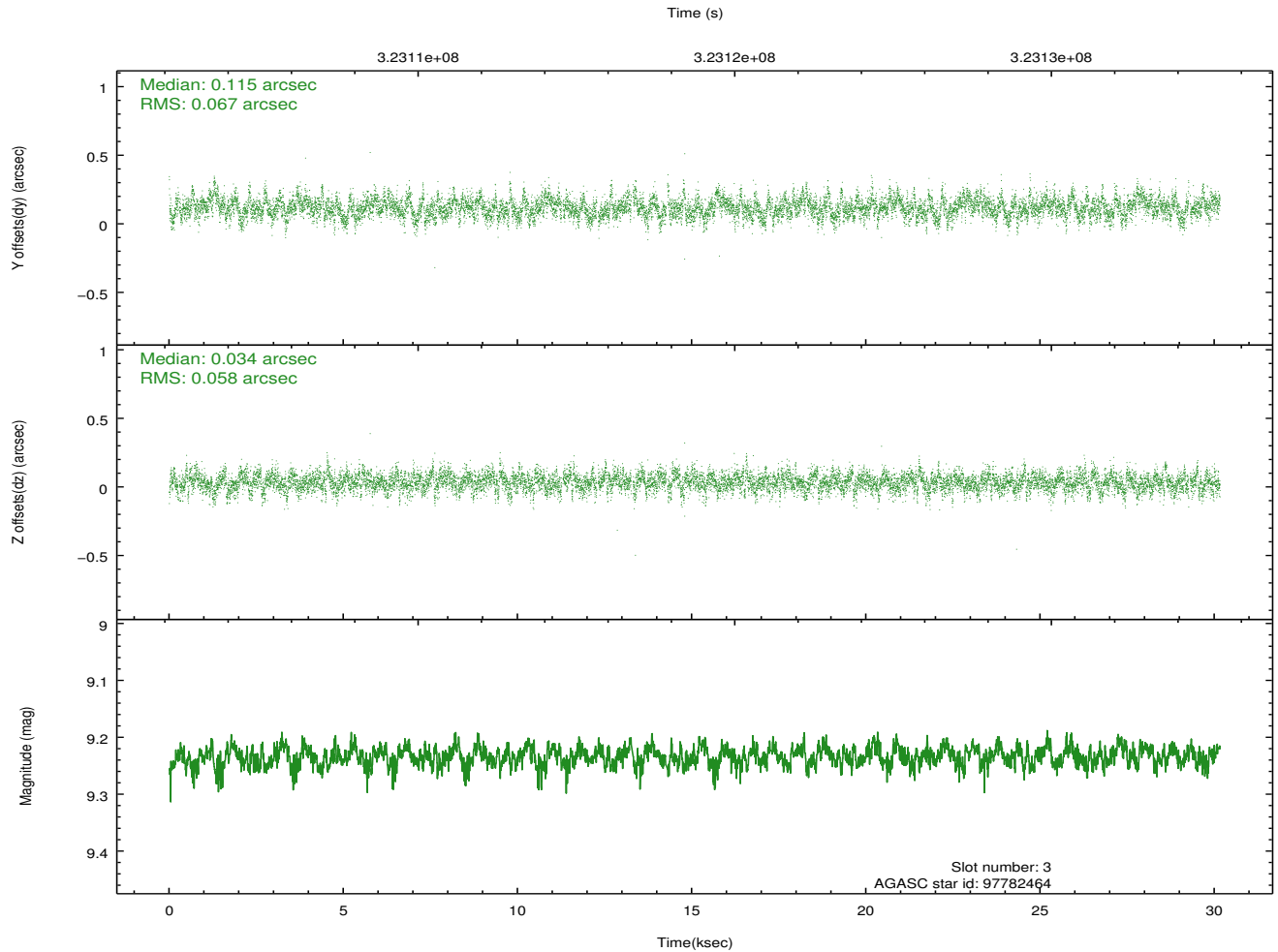
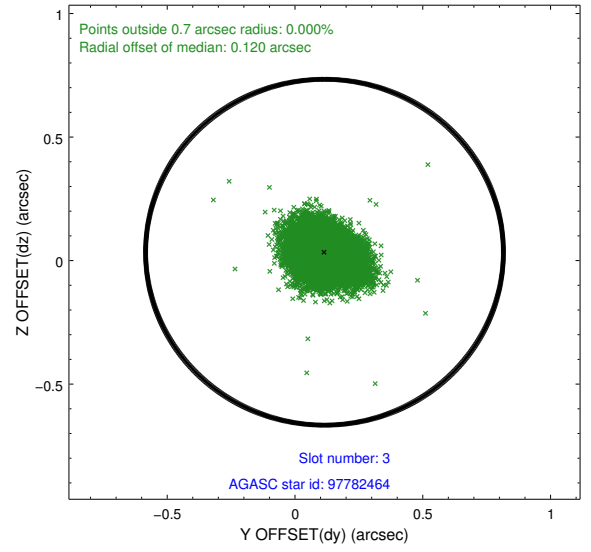
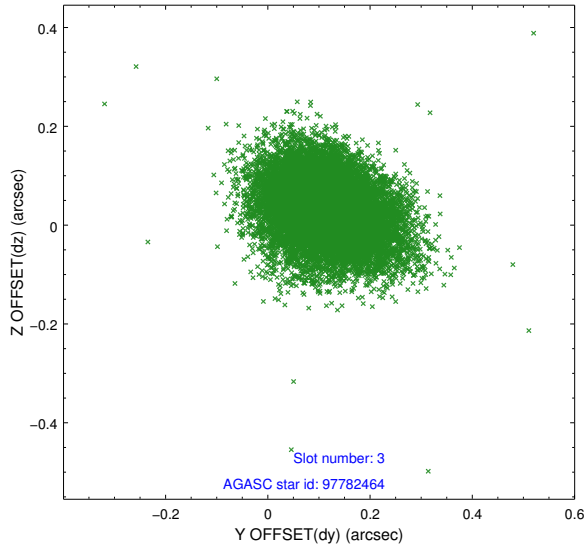
Slot Statistics

slot	status	id	mag	n_pts	med_dy	med_dz	dr1	dr2	ra	dec	mean_y	mean_z
0	FID	ACIS-I-1	7.22	7356	0.028	-0.013	0.018	0.028	0.000000	0.000000	926.42	-838.62
1	FID	ACIS-I-5	7.22	7356	-0.196	0.036	0.010	0.017	0.000000	0.000000	-1821.87	1058.88
2	FID	ACIS-I-6	7.23	7355	0.075	0.048	0.013	0.021	0.000000	0.000000	391.93	1703.47
3	GUIDE	97782464	9.23	14523	0.115	0.034	0.092	0.155	99.688062	9.027901	1891.01	-2021.26
4	GUIDE	97793672	8.56	14705	0.088	-0.181	0.071	0.117	99.657664	9.160198	1422.44	-2158.95
5	GUIDE	98313768	8.03	14708	-0.004	-0.061	0.077	0.122	100.363772	9.853997	-1228.19	186.15
6	GUIDE	98317968	8.35	14705	-0.117	0.047	0.067	0.105	100.431114	10.034480	-1892.08	383.23
7	GUIDE	98315960	8.73	14705	-0.084	0.161	0.062	0.104	100.661368	10.107192	-2206.04	1180.87

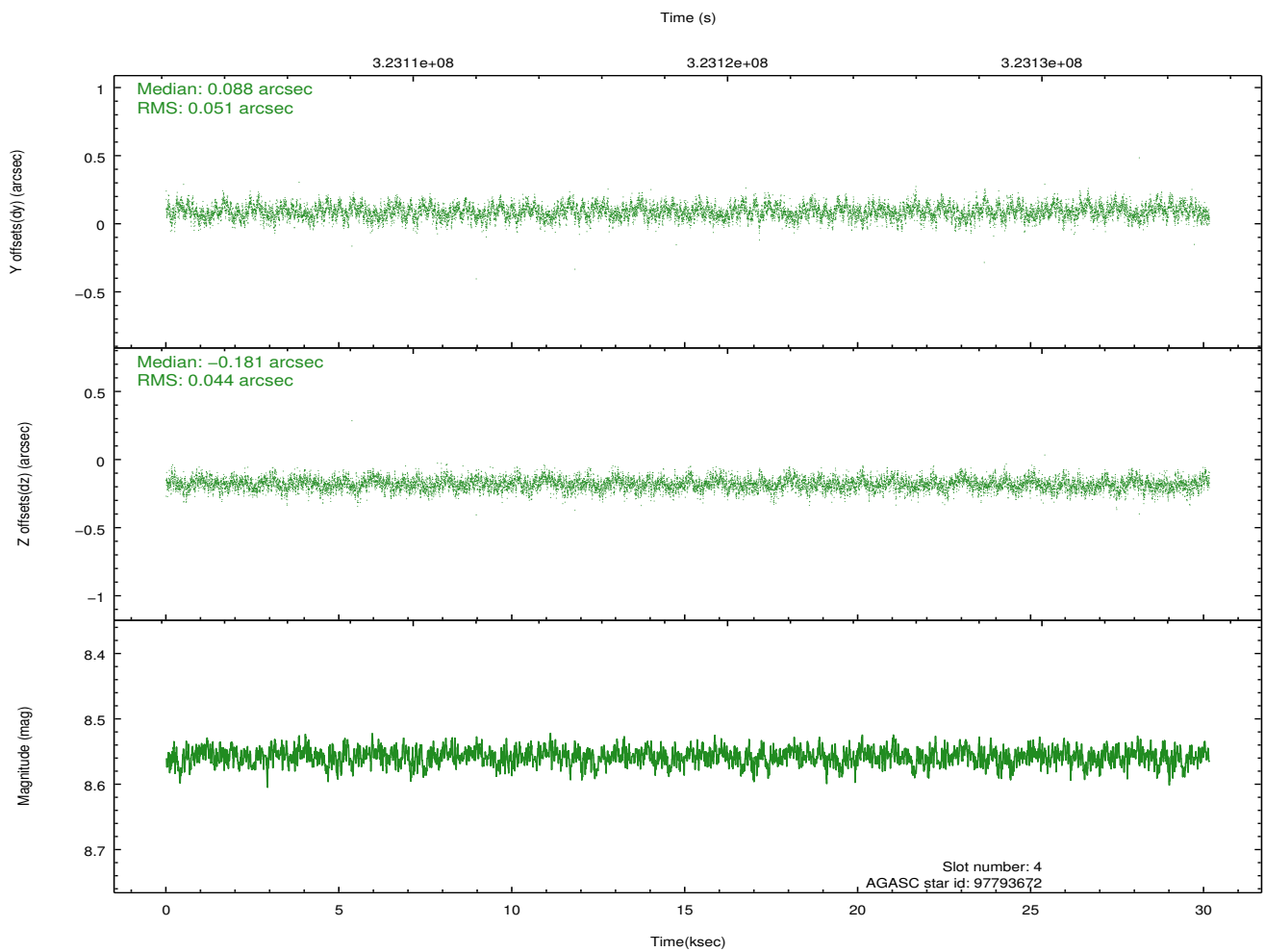
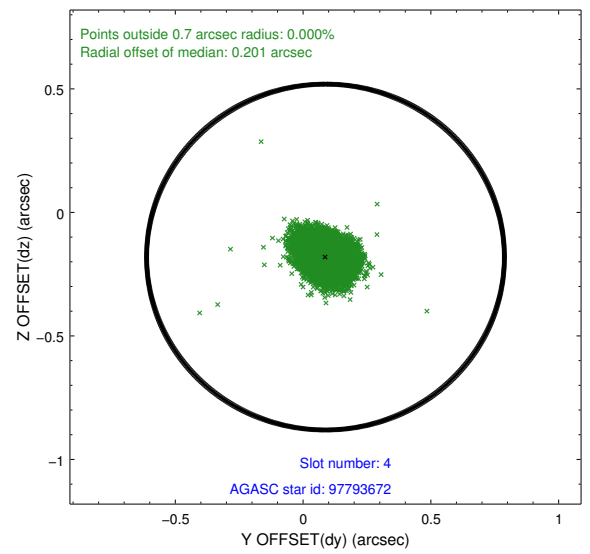
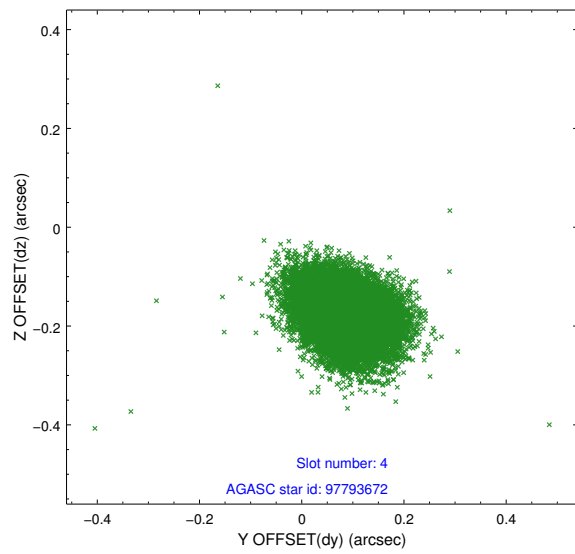
∞

2.4 Star Slots

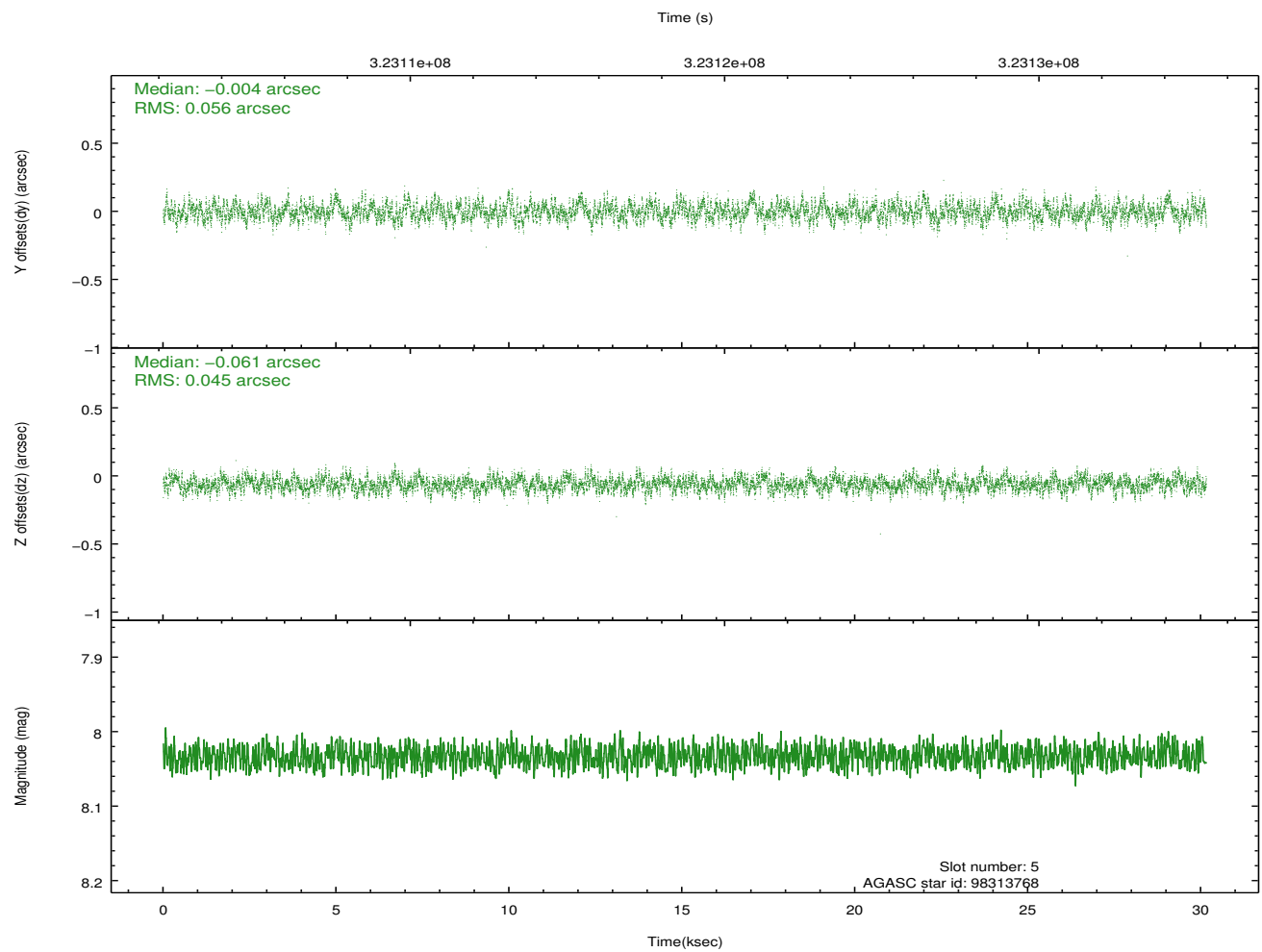
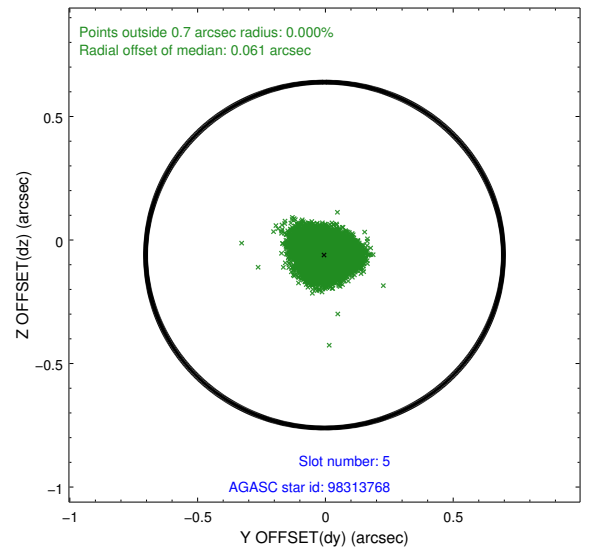
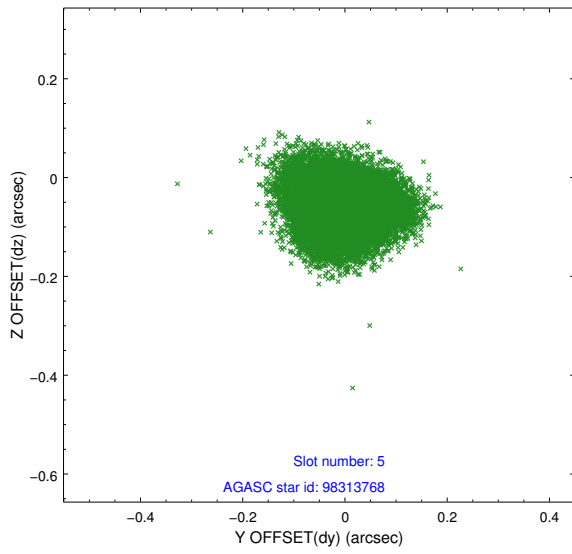
2.4.1 Slot 3



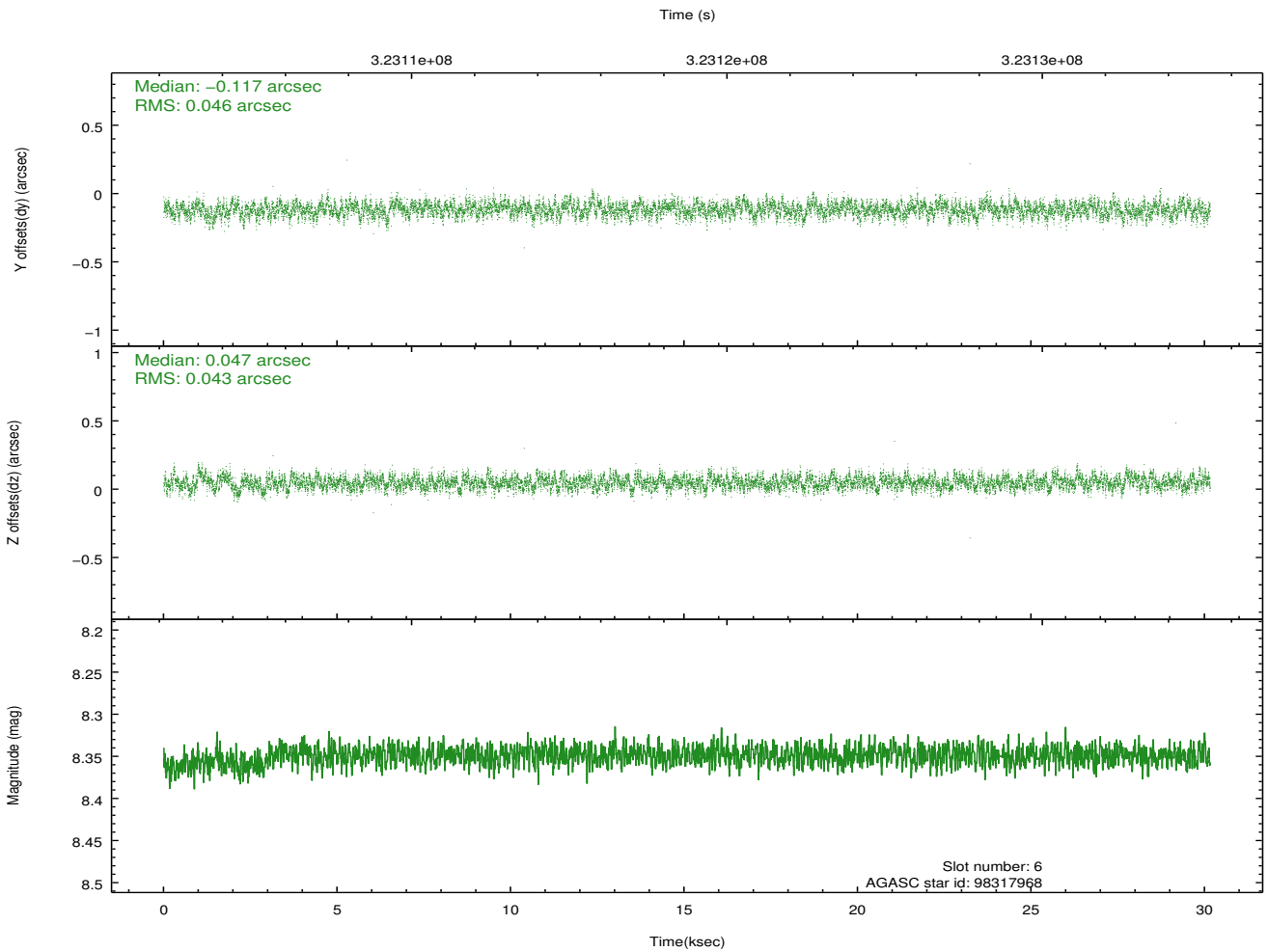
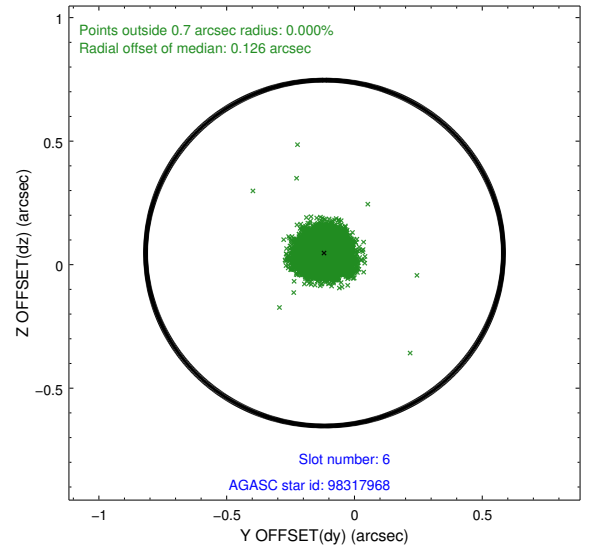
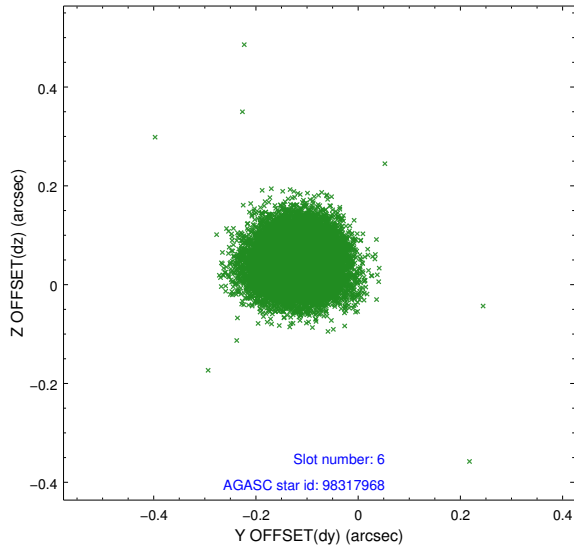
2.4.2 Slot 4



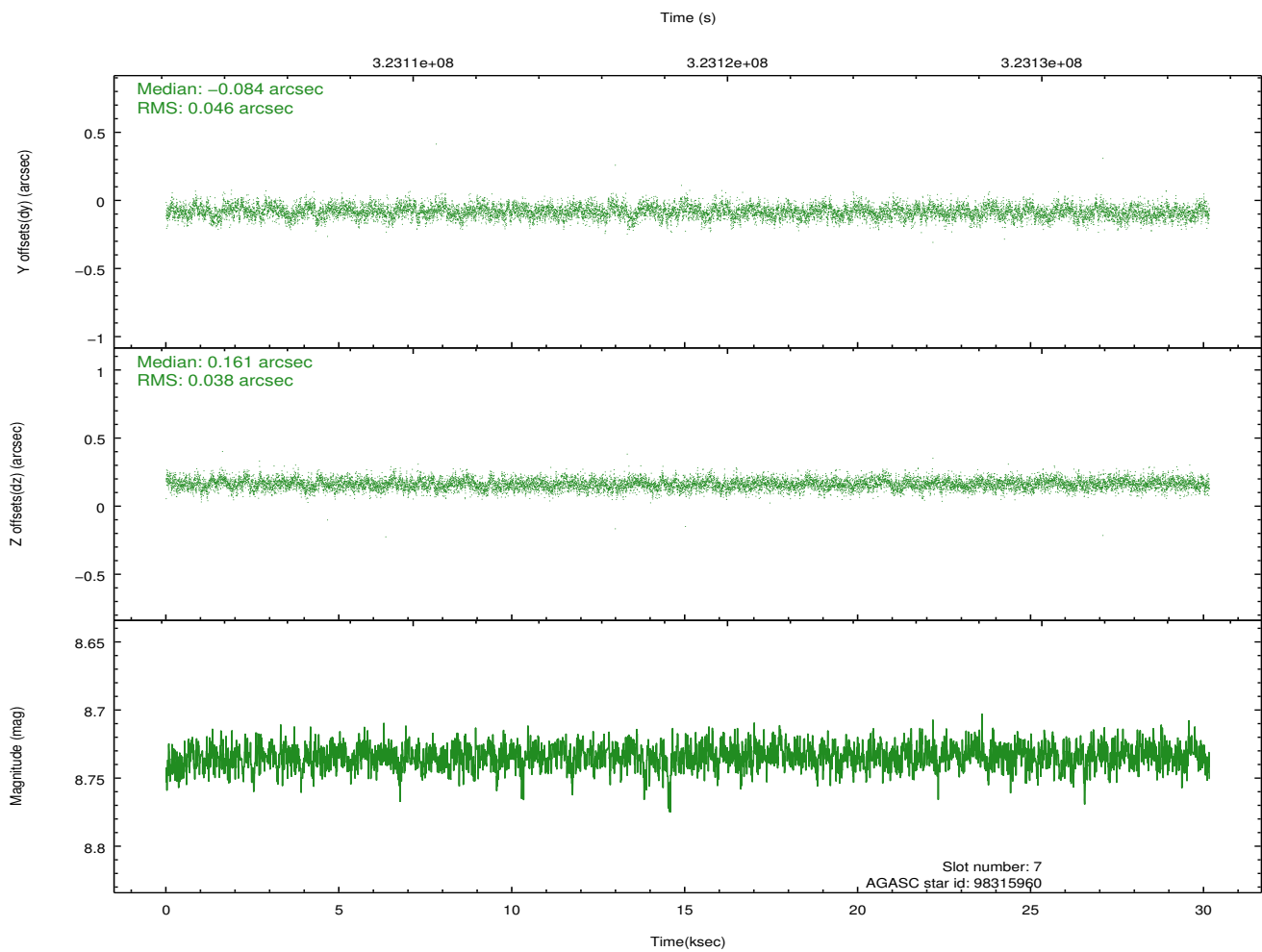
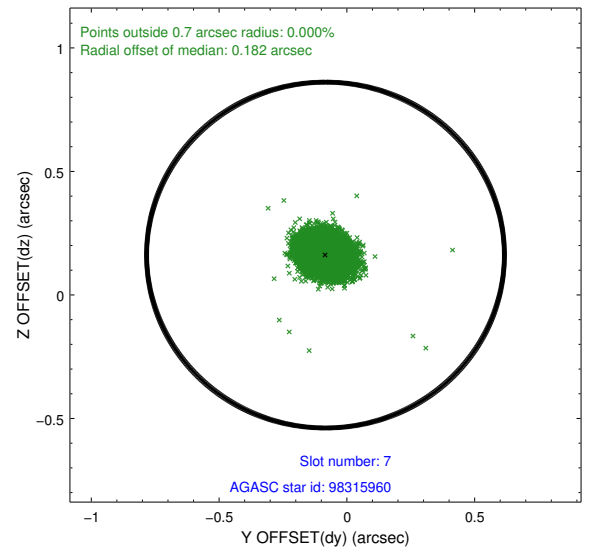
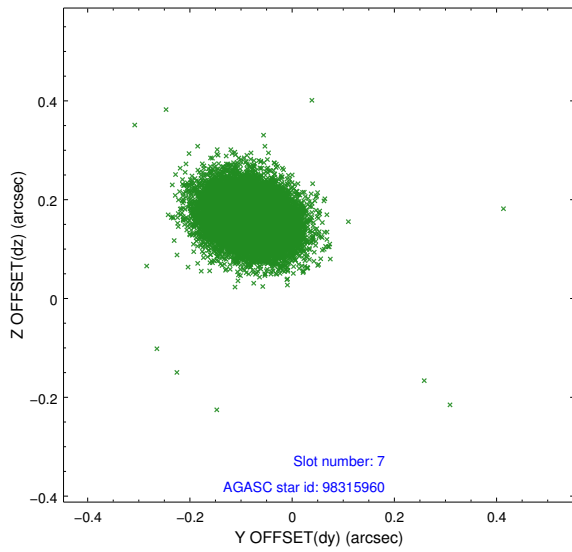
2.4.3 Slot 5



2.4.4 Slot 6

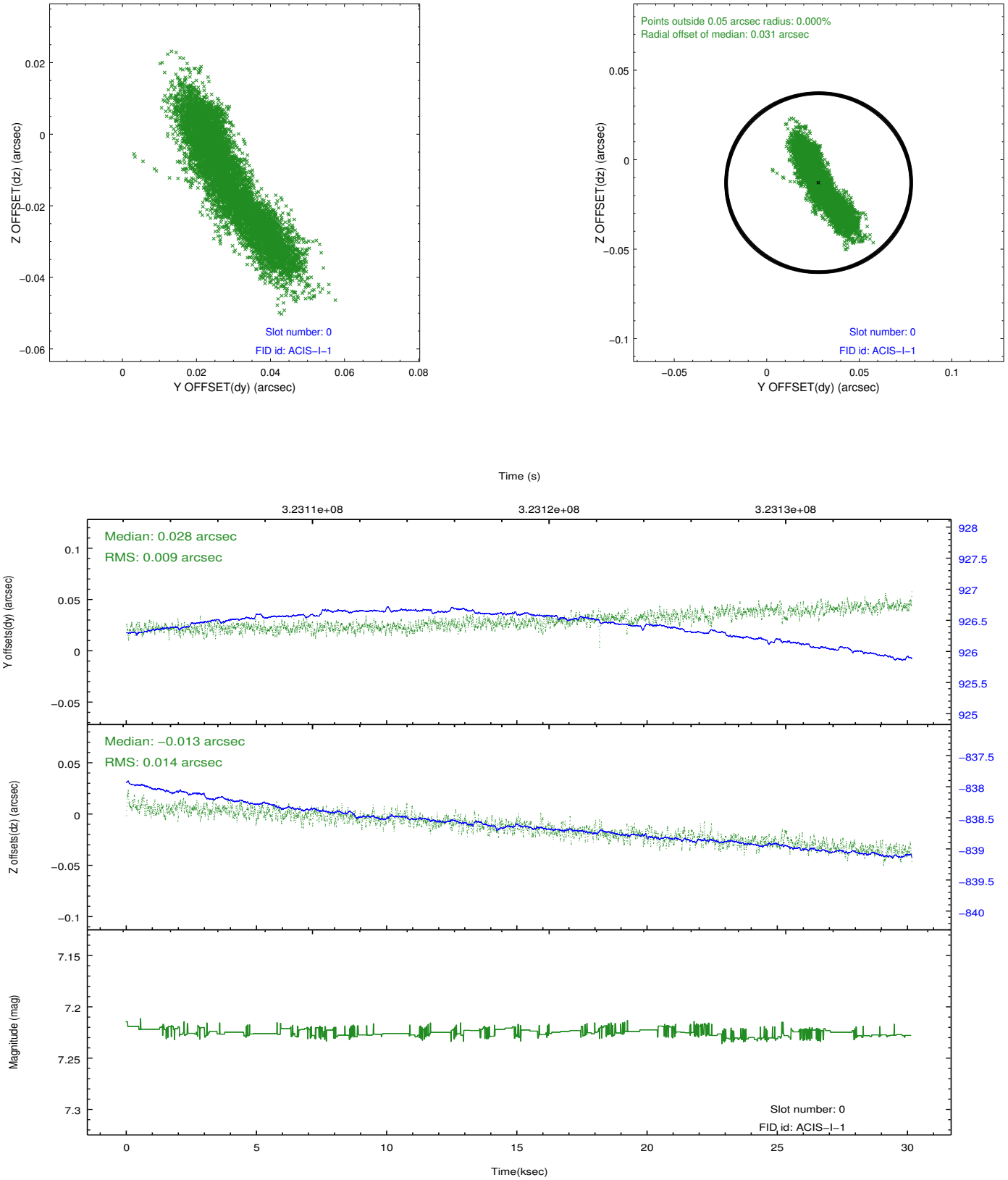


2.4.5 Slot 7

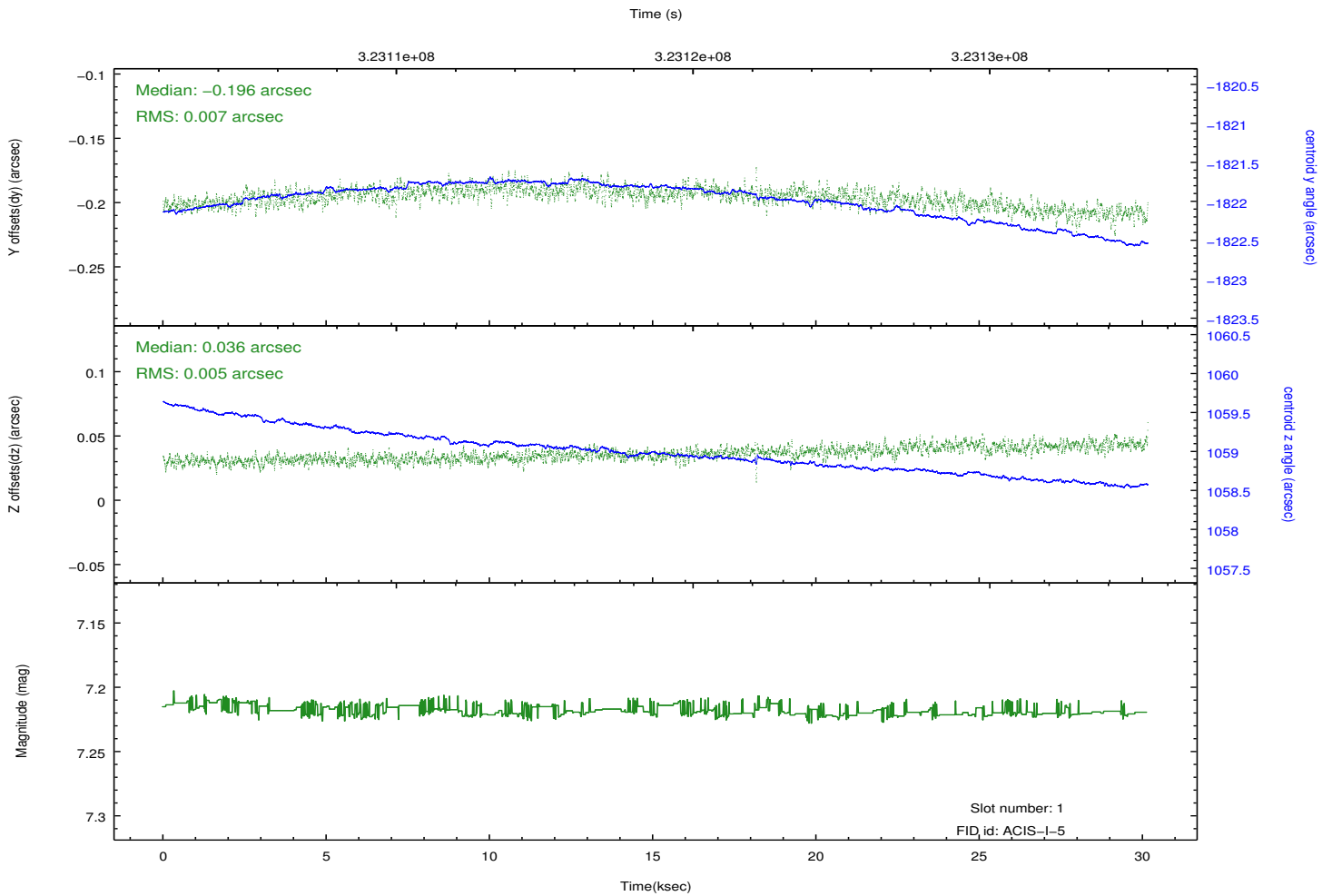
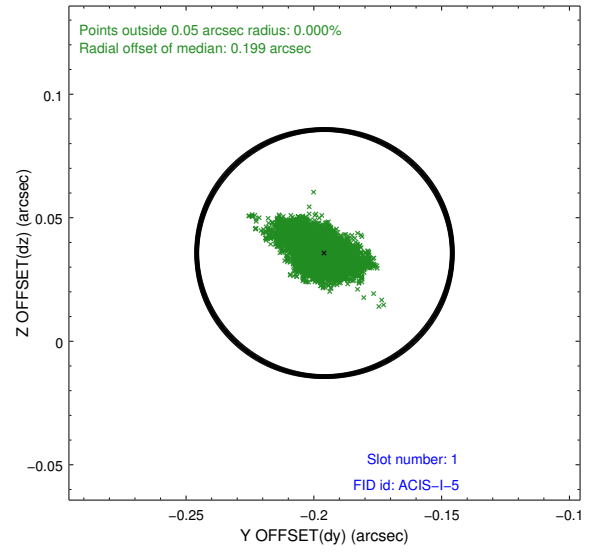
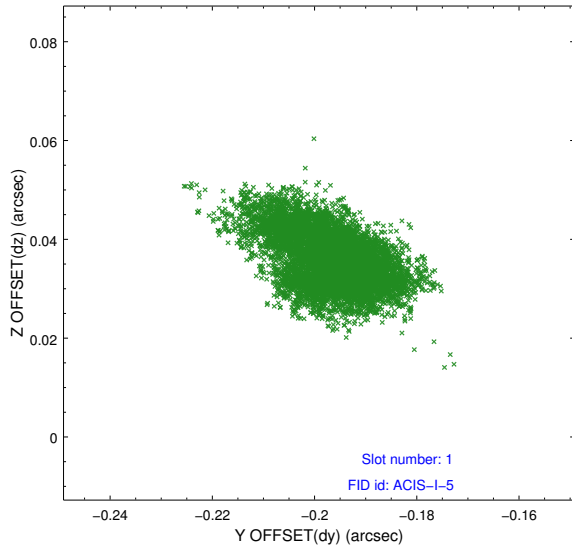


2.5 FID Slots

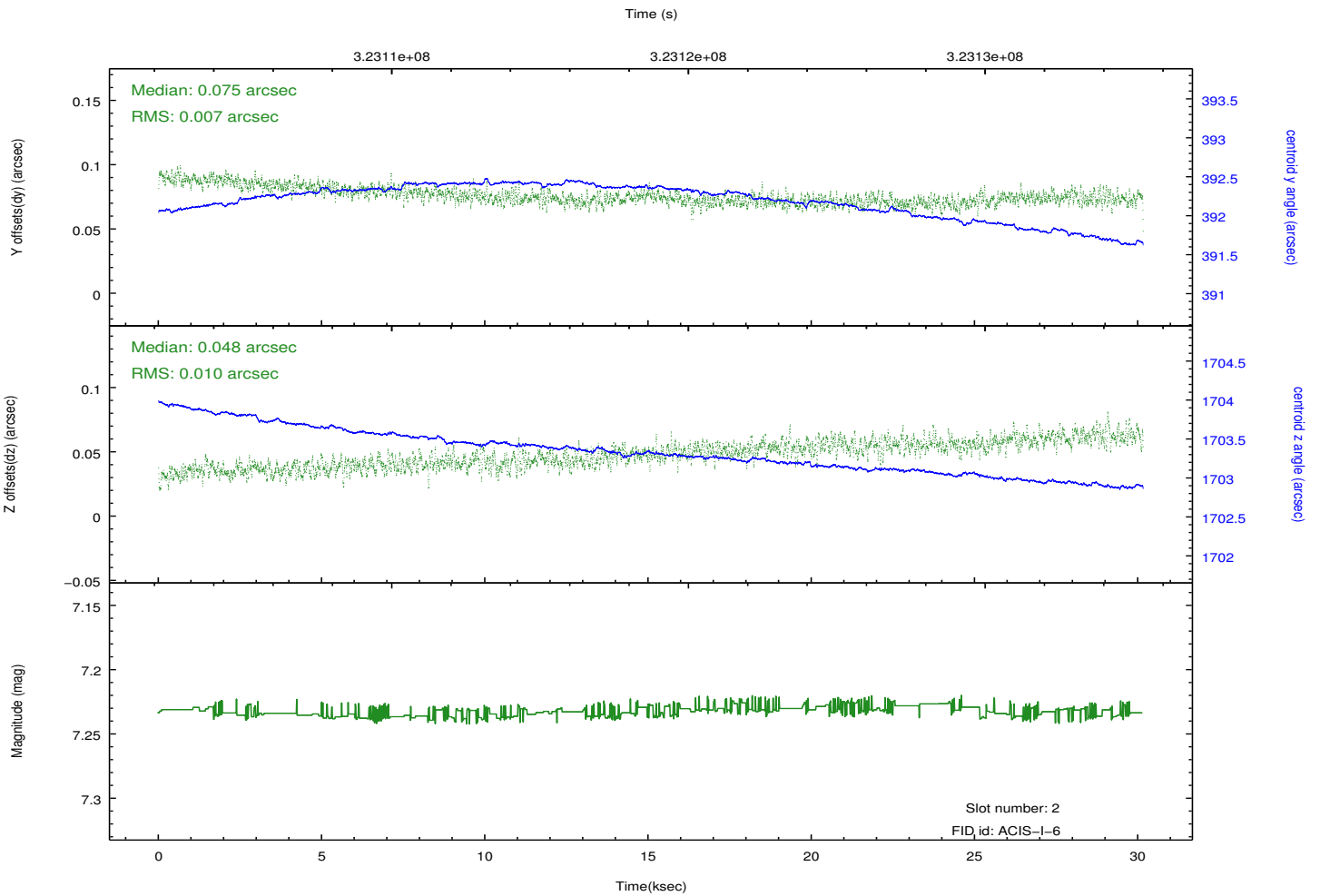
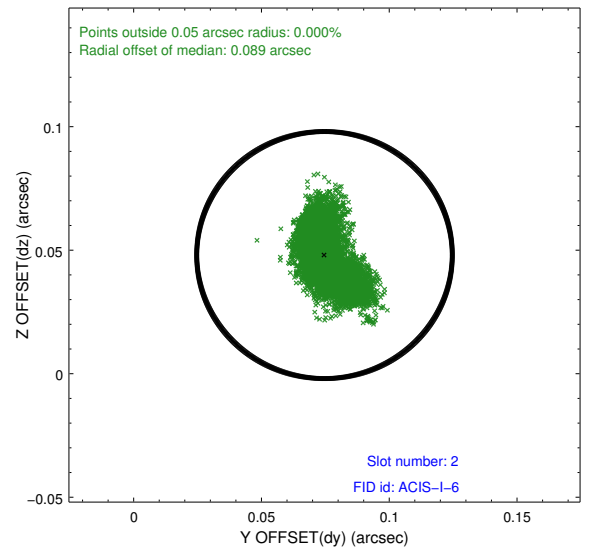
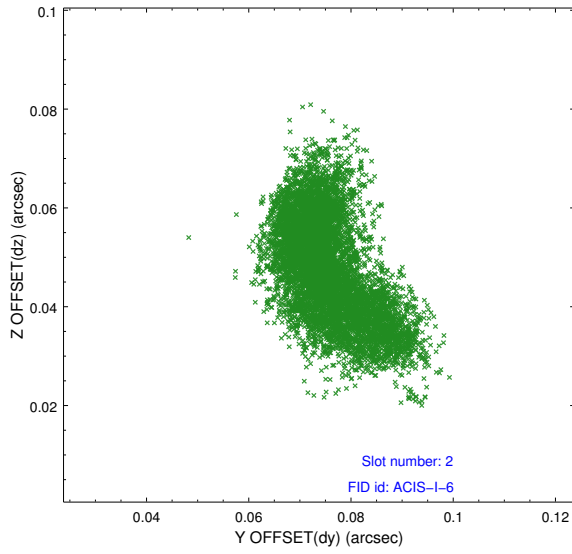
2.5.1 Slot 0



2.5.2 Slot 1



2.5.3 Slot 2



A Summary

A.1 Status

V&V Scientist	Beth Sundheim
V&V Date (YYYY-MM-DD)	2012.05.15
V&V Edition	1
V&V Disposition and Status	OK
V&V Charge Time	30.1505592

A.2 Comments

Window preference met.