

V&V Reference Report

L2 ASCDS Version : 8.4.4

Observation 9849 - L2 Version 2
Chandra X-Ray Center

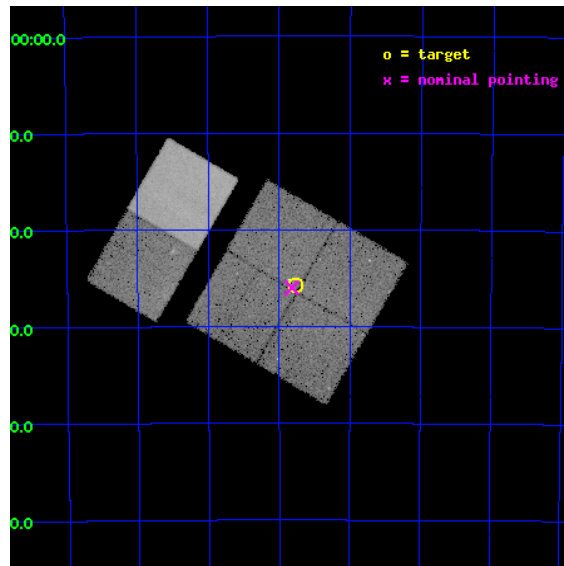
L2 Processing Date : May 13 2012

Contents

1	Front	2
2	OBI	3
2.1	OBI	3
2.1.1	Images	3
2.1.2	Bias	3
2.1.3	Parameters	4
2.1.4	Events	4
2.2	Compared Parameters	5
2.3	Aspect	6
2.4	Star Slots	9
2.4.1	Slot 3	9
2.4.2	Slot 4	10
2.4.3	Slot 5	11
2.4.4	Slot 6	12
2.4.5	Slot 7	13
2.5	FID Slots	14
2.5.1	Slot 0	14
2.5.2	Slot 1	15
2.5.3	Slot 2	16
A	Summary	17
A.1	Status	17
A.2	Comments	17

1 Front

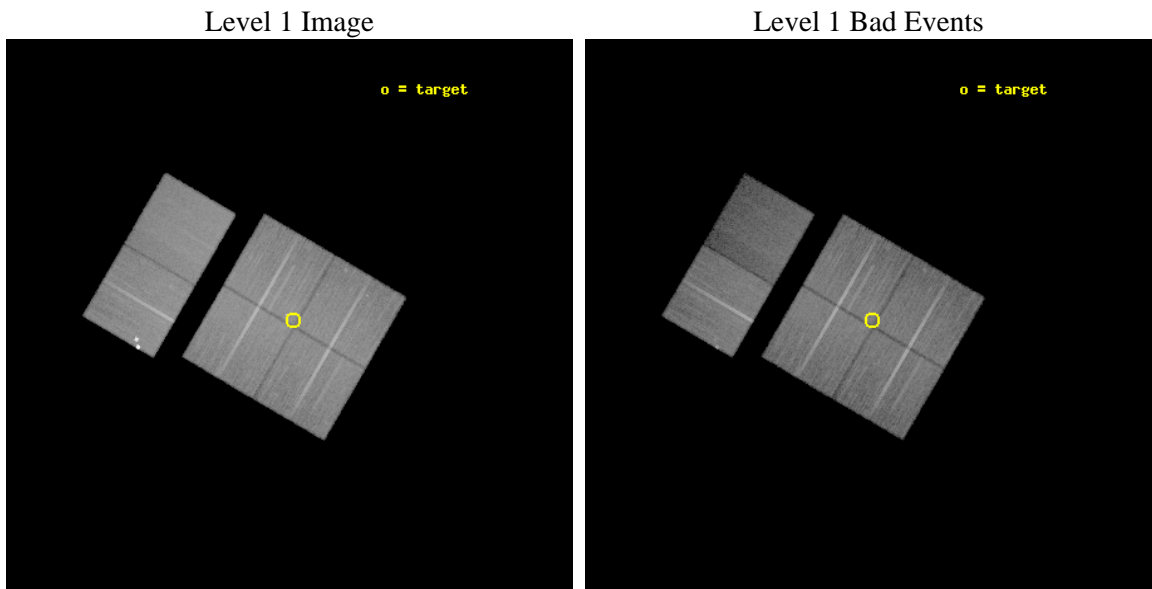
seq_num	900832	Sequence number
obs_id	9849	Observation id
title	The Great Nebula in Carina: Protoplanetary Disks to Starburst Galaxies	Proposal title
observer	Dr. Leisa Townsley	Principal investigator
object	Carina South Pillars Ptg 5	Source name
dtcycle	0	
cycle	P	events from which exps? Prim/Second/Both
ra_targ	161.193333	Observer's specified target RA [deg]
dec_targ	-60.427917	Observer's specified target Dec [deg]
ra_nom	161.20545687012	Nominal RA [deg]
dec_nom	-60.433389817989	Nominal Dec [deg]
roll_nom	300.21924009622	Nominal Roll [deg]
revision	2	Processing version of data
ontime	28844.53651458	Sum of GTIs [s]
livetime	28479.289625138	Livetime [s]
ontime0	28844.41339457	Sum of GTIs [s]
ontime1	28841.213434219	Sum of GTIs [s]
ontime2	28841.254464328	Sum of GTIs [s]
ontime3	28844.53651458	Sum of GTIs [s]
ontime6	28841.377594352	Sum of GTIs [s]
ontime7	28844.577554584	Sum of GTIs [s]
l2events	198734	Number of level 2 events



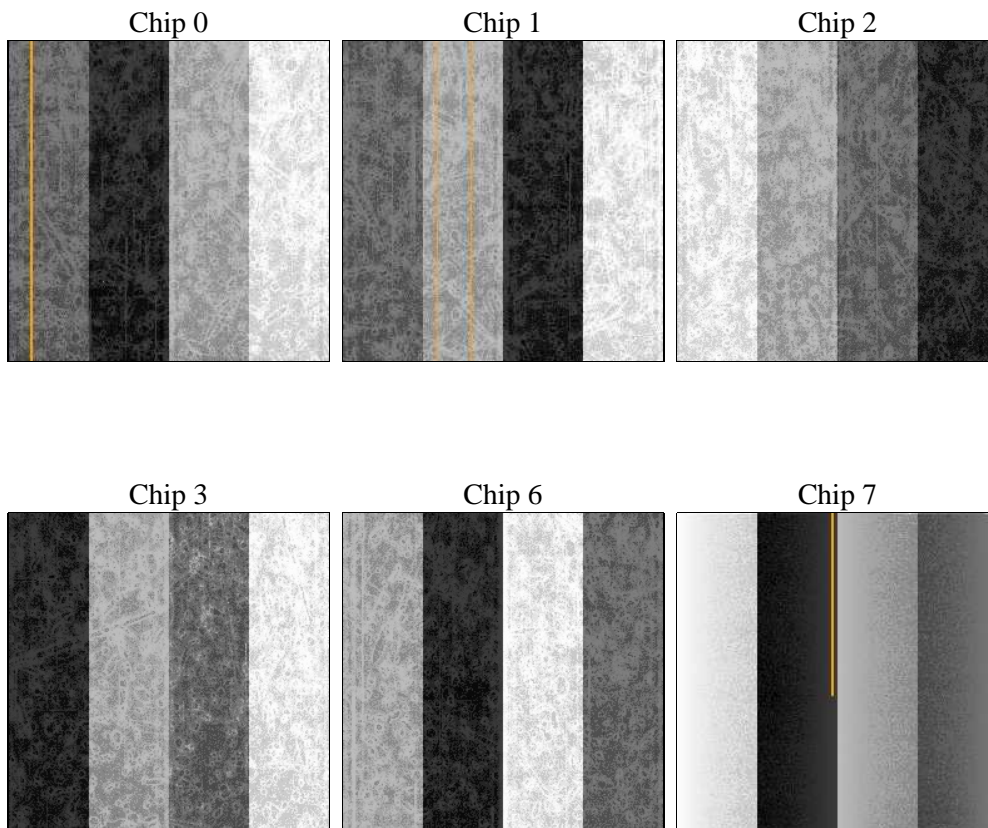
2 OBI

2.1 OBI

2.1.1 Images



2.1.2 Bias



2.1.3 Parameters

obi_num	0	Obi number	sched_exp_time	28800.000000	[s] Scheduled observation exposure time
ascdsver	8.4.4	Processing system revision	ontime	28844.53651458	Sum of GTIs [s]
caldsver	4.4.9	 	ontime0	28844.41339457	Sum of GTIs [s]
date	2012-05-13T13:01:32	Date and time of file creation	ontime1	28841.213434219	Sum of GTIs [s]
revision	2	Processing version of data	ontime2	28841.254464328	Sum of GTIs [s]
			ontime3	28844.53651458	Sum of GTIs [s]
			ontime6	28841.377594352	Sum of GTIs [s]
			ontime7	28844.577554584	Sum of GTIs [s]
			l1events	1299541	Number of level 1 events

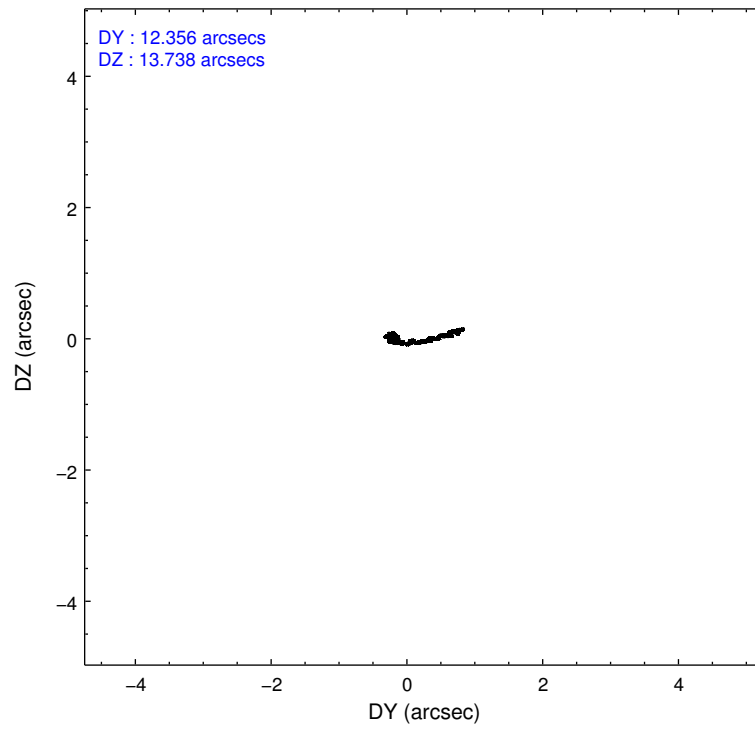
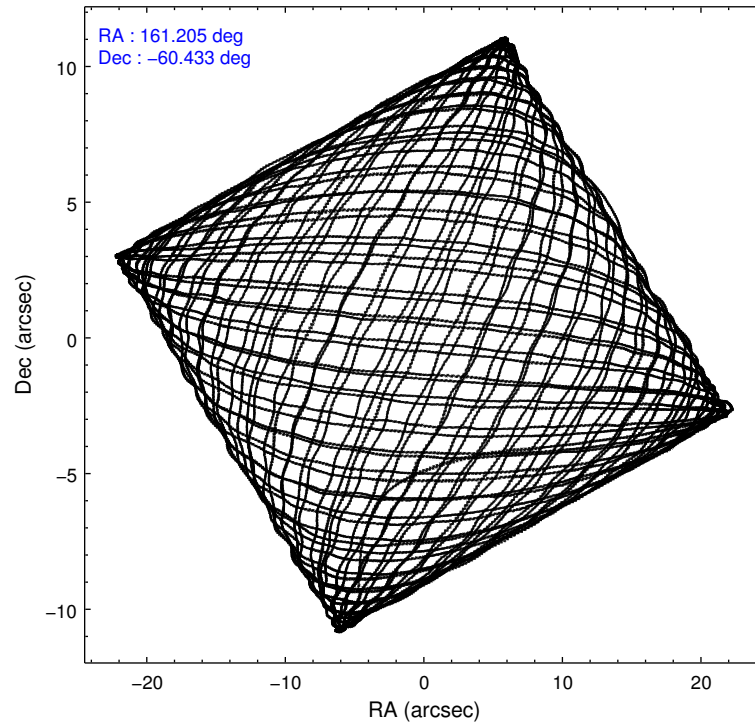
2.1.4 Events

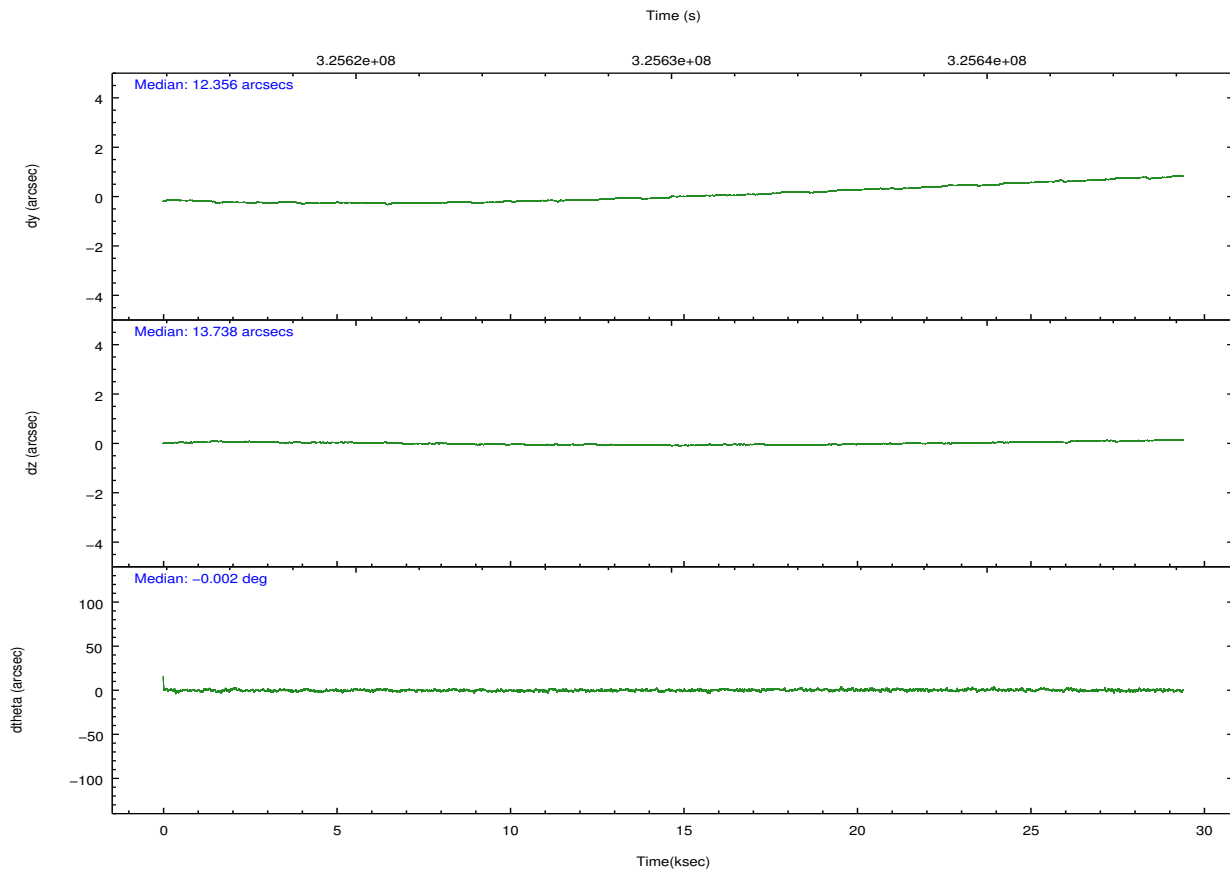
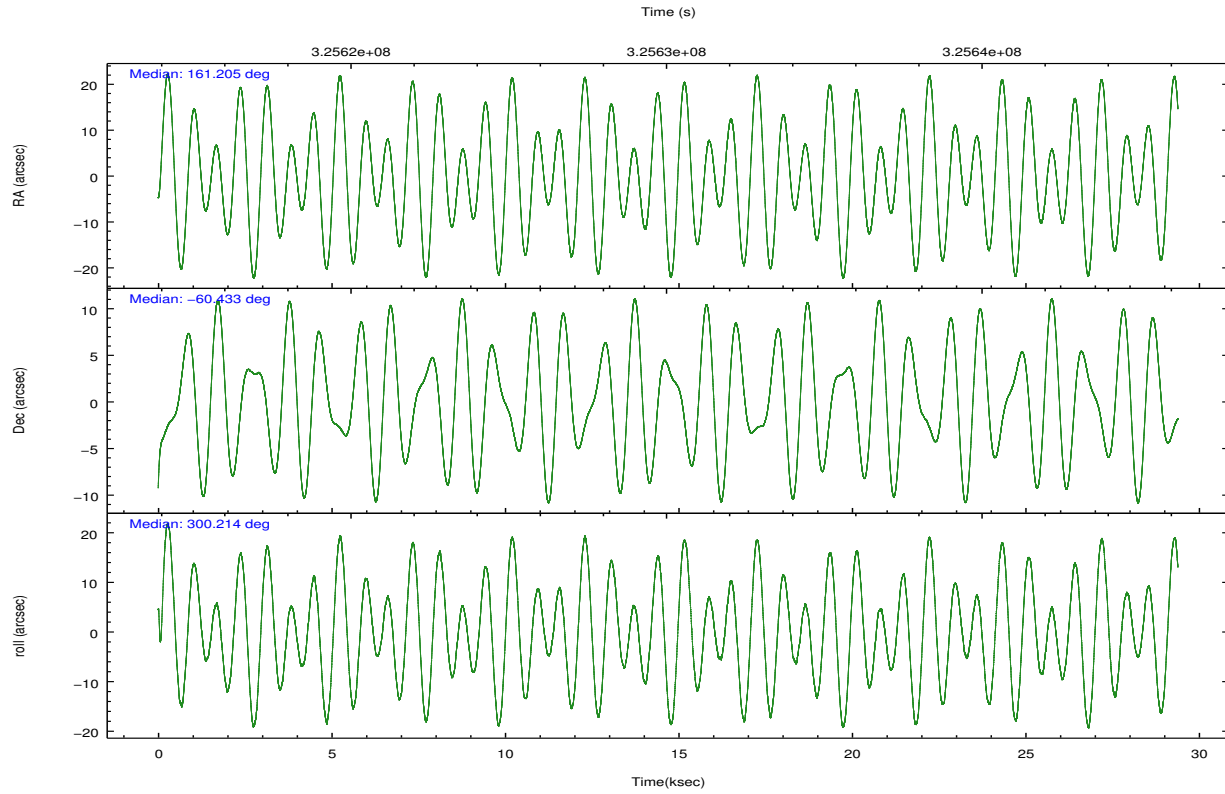
	ccd 0	ccd 1	ccd 2	ccd 3	ccd 6	ccd 7		ccd 0	ccd 1	ccd 2	ccd 3	ccd 6	ccd 7
level 1 events	198056	199601	225676	217023	251034	208151	grade 0 events	8898	9889	9544	9777	26606	11276
rejected events	175509	175155	202759	194089	201112	104381		4%	4%	4%	4%	10%	5%
rejected %	88%	87%	89%	89%	80%	50%	grade 1 events	118	143	126	152	310	321
								0%	0%	0%	0%	0%	0%
							grade 2 events	5337	5135	5282	4639	13693	22288
								2%	2%	2%	2%	5%	10%
							grade 3 events	2368	2517	2137	2316	2486	9780
								1%	1%	0%	1%	0%	4%
							grade 4 events	2189	2454	2351	2242	2452	9681
								1%	1%	1%	1%	0%	4%
							grade 5 events	6456	7038	6065	7191	7842	22268
								3%	3%	2%	3%	3%	10%
							grade 6 events	3758	4453	3605	3962	4690	50757
								1%	2%	1%	1%	1%	24%
							grade 7 events	168932	167972	196566	186744	192955	81780
								85%	84%	87%	86%	76%	39%

2.2 Compared Parameters

Parameter	Planned	Actual	Parameter	Planned	Actual
Instrument	ACIS	ACIS	Obspar format version number	7	7
Detector	ACIS-012367	ACIS-012367	Obspar file type	PREDICTED	ACTUAL
Grating	NONE	NONE	Obspar update status	NONE	UPDATED
Data mode	VFAINT	VFAINT	CCD I0 on	Y	Y
Observation mode	POINTING	POINTING	CCD I1 on	Y	Y
[deg] Pointing RA	161.156967	161.2054568701234	CCD I2 on	Y	Y
[deg] Pointing Dec	-60.419806	-60.43338981798902	CCD I3 on	Y	Y
[deg] Pointing Roll	299.968373	300.2192400962175	CCD S0 on	N	N
[mm] SIM focus pos	-0.782348	-0.7809083437167272	CCD S1 on	N	N
[mm] SIM defocus	0	0.001439871863259334	CCD S2 on	O1	Y
[mm] SIM translation stage pos	-233.592463	-233.5874344608287	CCD S3 on	O2	Y
[mm] SIM translation stage offset	0	-0.005018542100998502	CCD S4 on	N	N
[s] Observation start time (MET)	325615940.184000	325614728.79264	CCD S5 on	N	N
Observation start date	2008-04-26T16:51:15	2008-04-26T16:32:08	Number of optional ACIS chips dropped	0	0
[s] Observation end time (MET)	325644740.184000	325645016.00661	On-chip summing requested	N	N
Observation end date	2008-04-27T00:51:15	2008-04-27T00:56:56	Subarray requested	NONE	NONE
Read mode	TIMED	TIMED	Alternating exposures requested	N	N
			[s] Primary exposure time	0.000000	3.2

2.3 Aspect





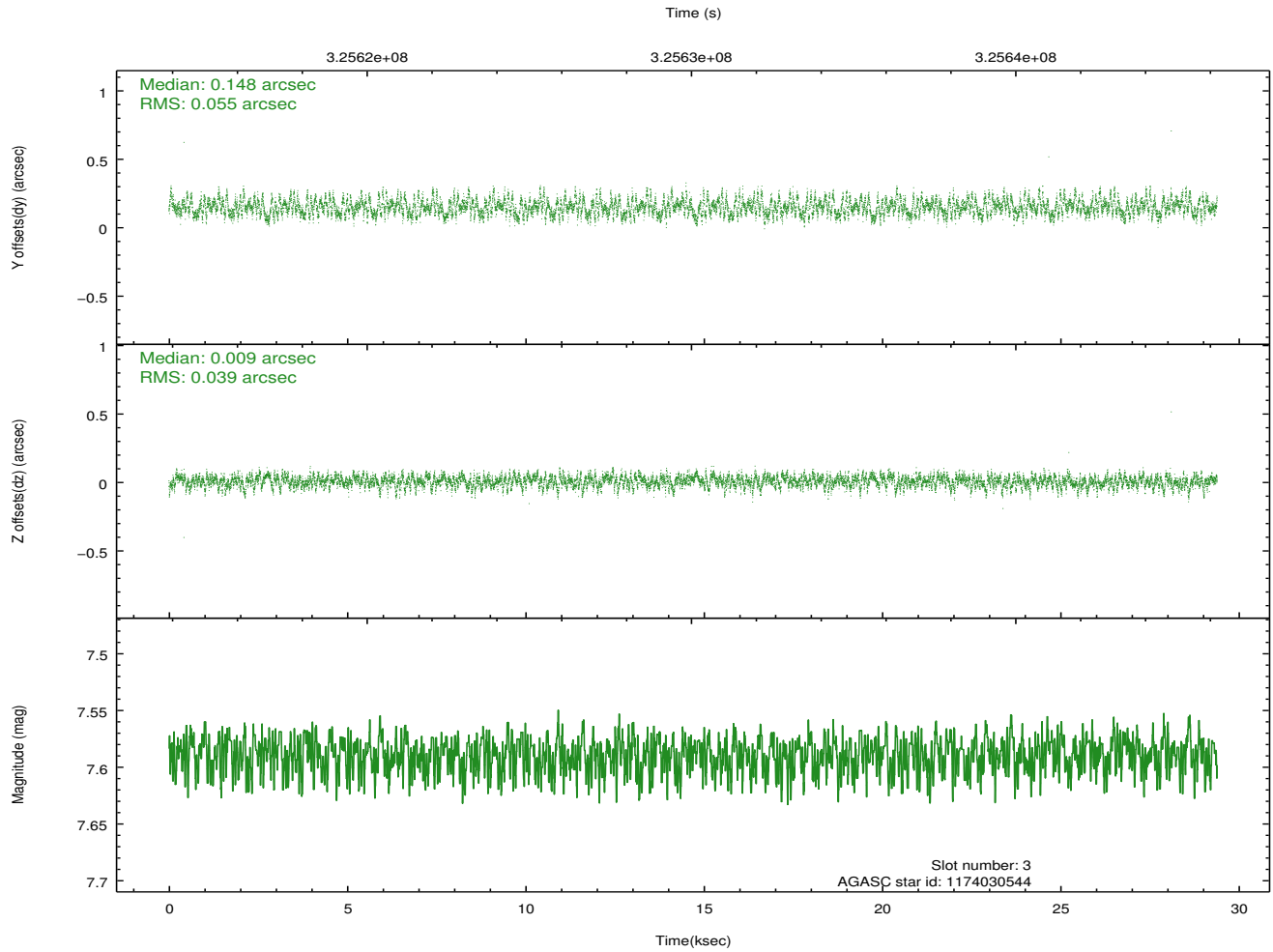
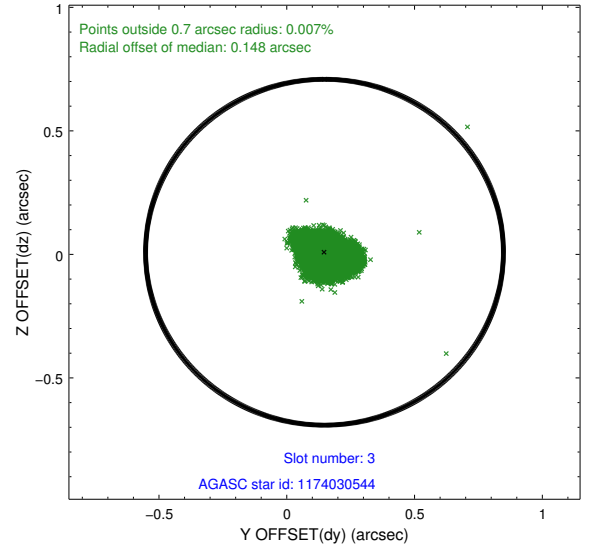
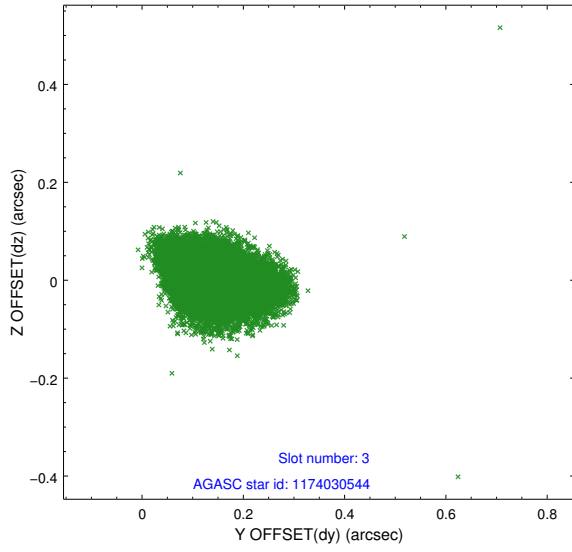
Slot Statistics

slot	status	id	mag	n_pts	med_dy	med_dz	dr1	dr2	ra	dec	mean_y	mean_z
0	FID	ACIS-I-1	7.01	7169	-0.067	0.084	0.010	0.019	0.000000	0.000000	927.01	-837.23
1	FID	ACIS-I-2	6.92	7170	-0.136	-0.097	0.010	0.022	0.000000	0.000000	-767.11	-843.88
2	FID	ACIS-I-4	6.95	7166	0.107	0.080	0.008	0.015	0.000000	0.000000	2147.04	1062.52
3	GUIDE	1174030544	7.59	14334	0.148	0.009	0.072	0.116	160.765344	-60.986885	1429.22	-1613.06
4	GUIDE	1174031160	8.81	14332	-0.130	-0.108	0.063	0.104	162.483783	-60.757597	2239.38	1402.10
5	GUIDE	1174020184	8.15	14335	0.022	0.104	0.063	0.103	159.502388	-60.147833	-2296.42	-2097.97
6	GUIDE	1174012960	7.16	14338	-0.006	0.088	0.048	0.077	160.855674	-60.332270	-540.08	-308.40
7	GUIDE	1174033752	8.45	14328	-0.032	-0.089	0.081	0.126	162.418977	-60.164599	351.74	2406.03

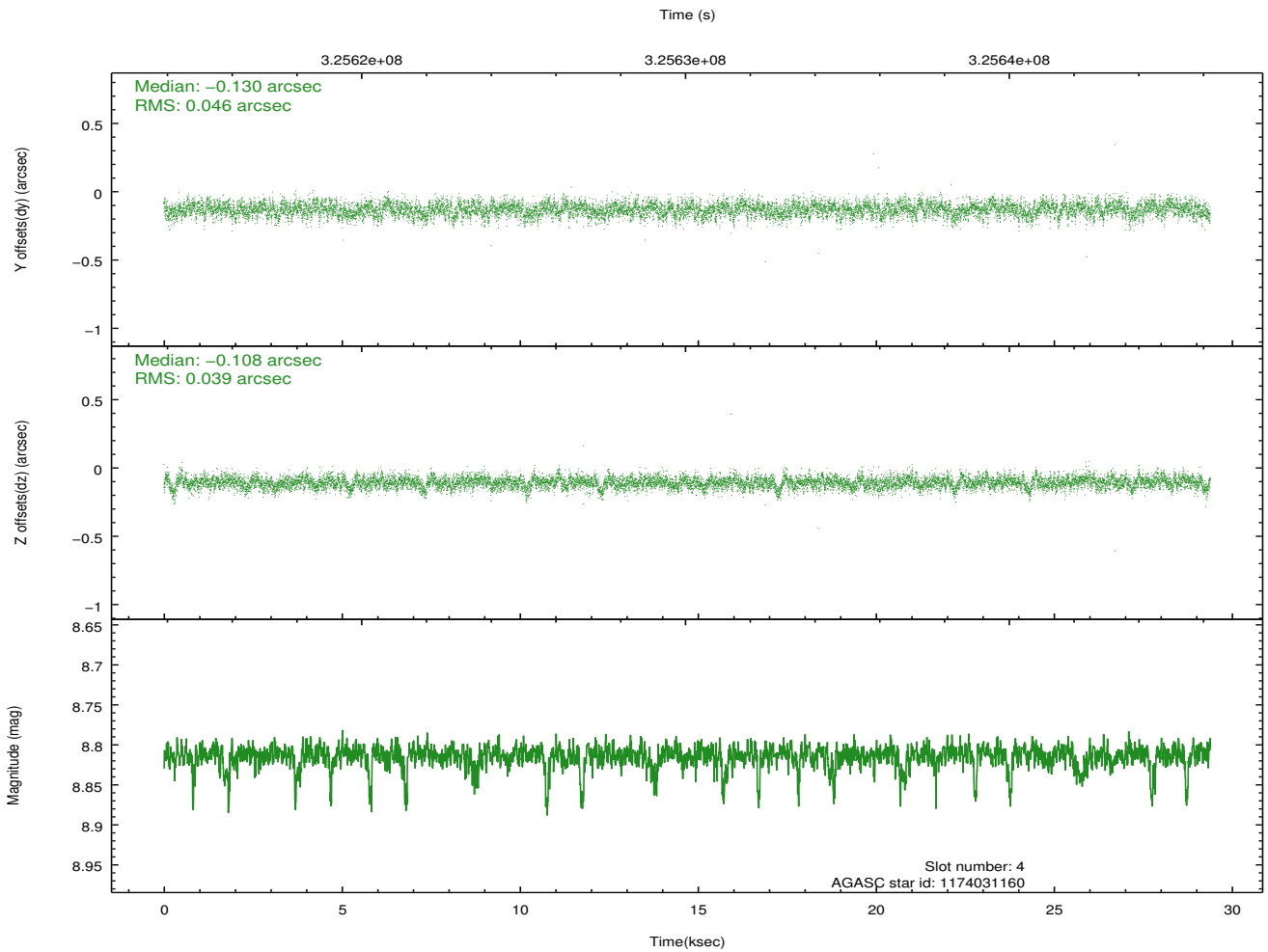
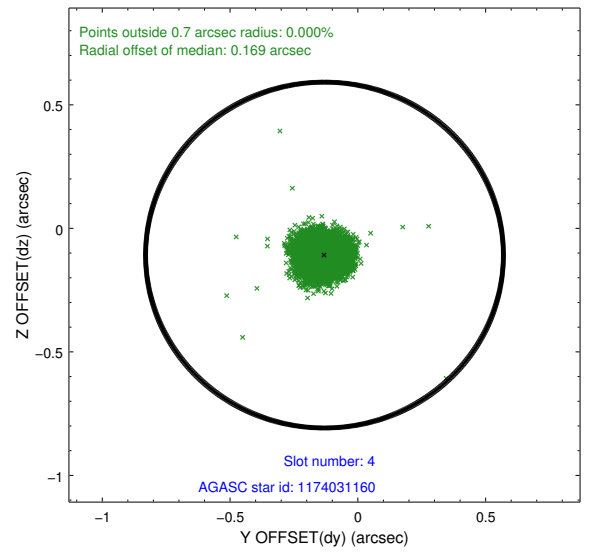
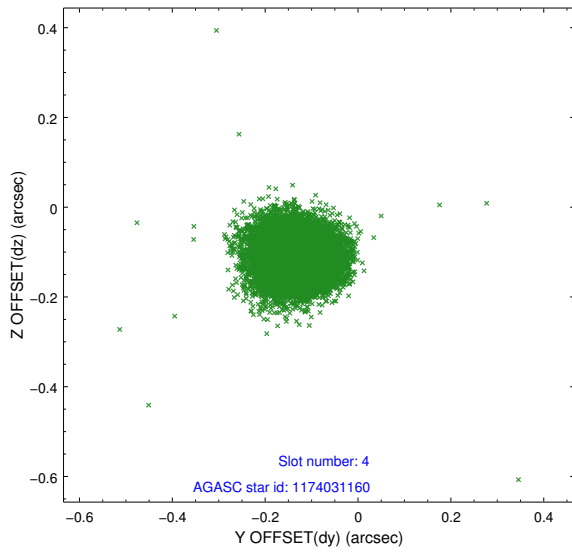
∞

2.4 Star Slots

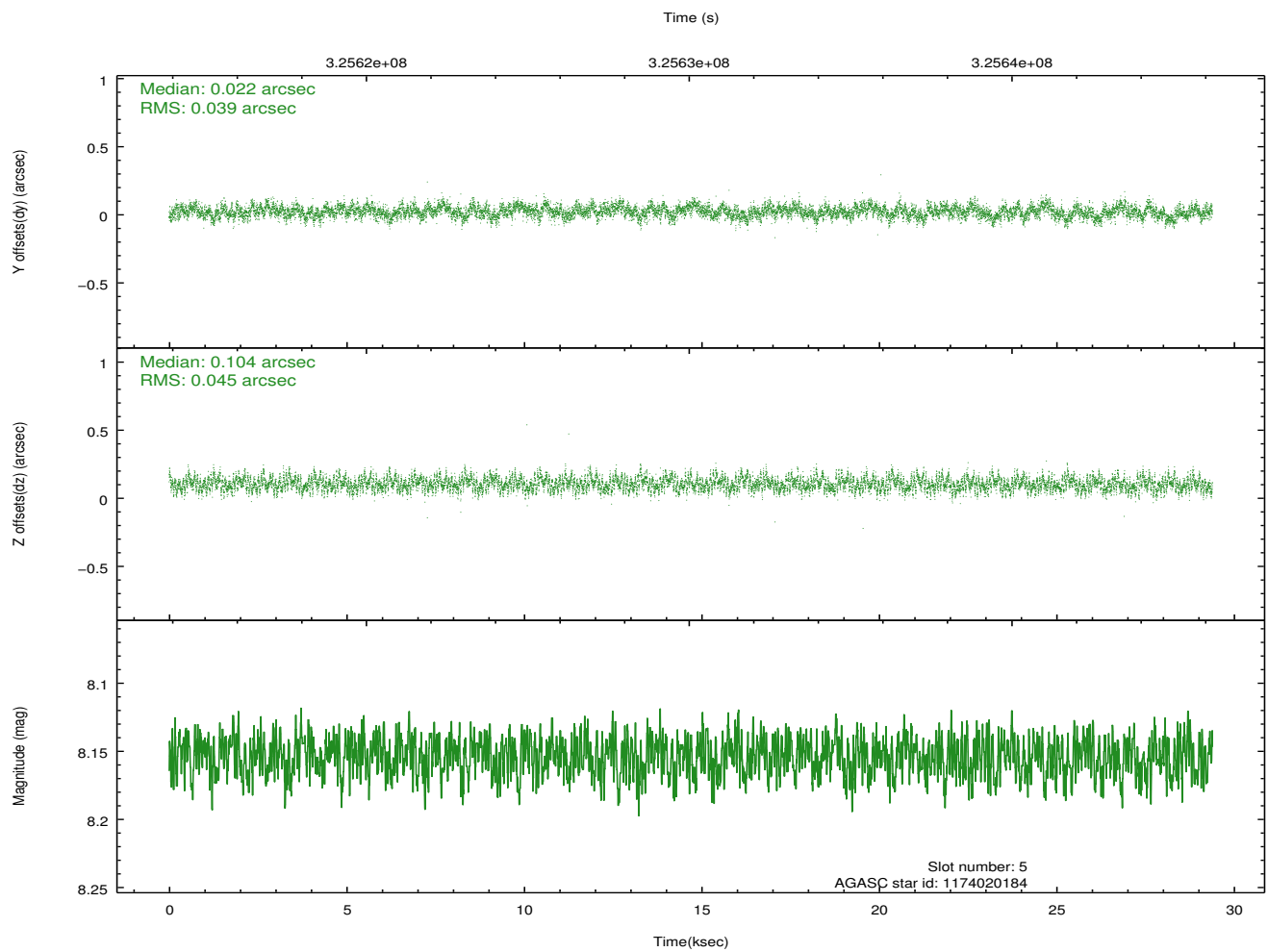
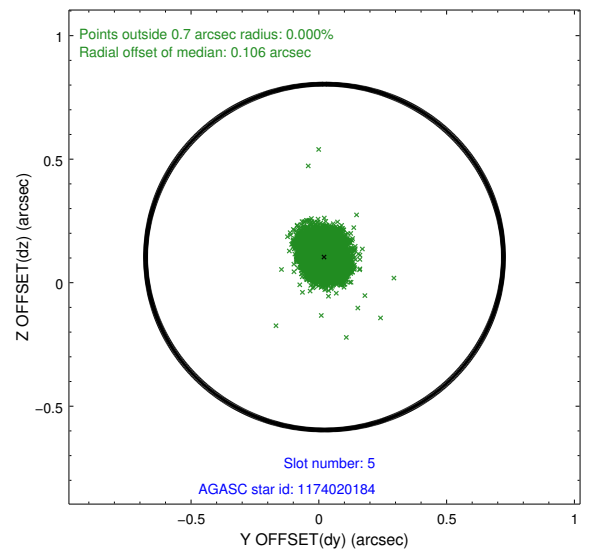
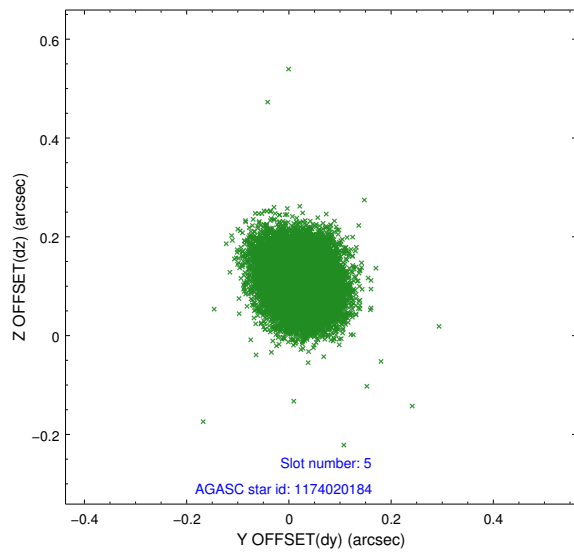
2.4.1 Slot 3



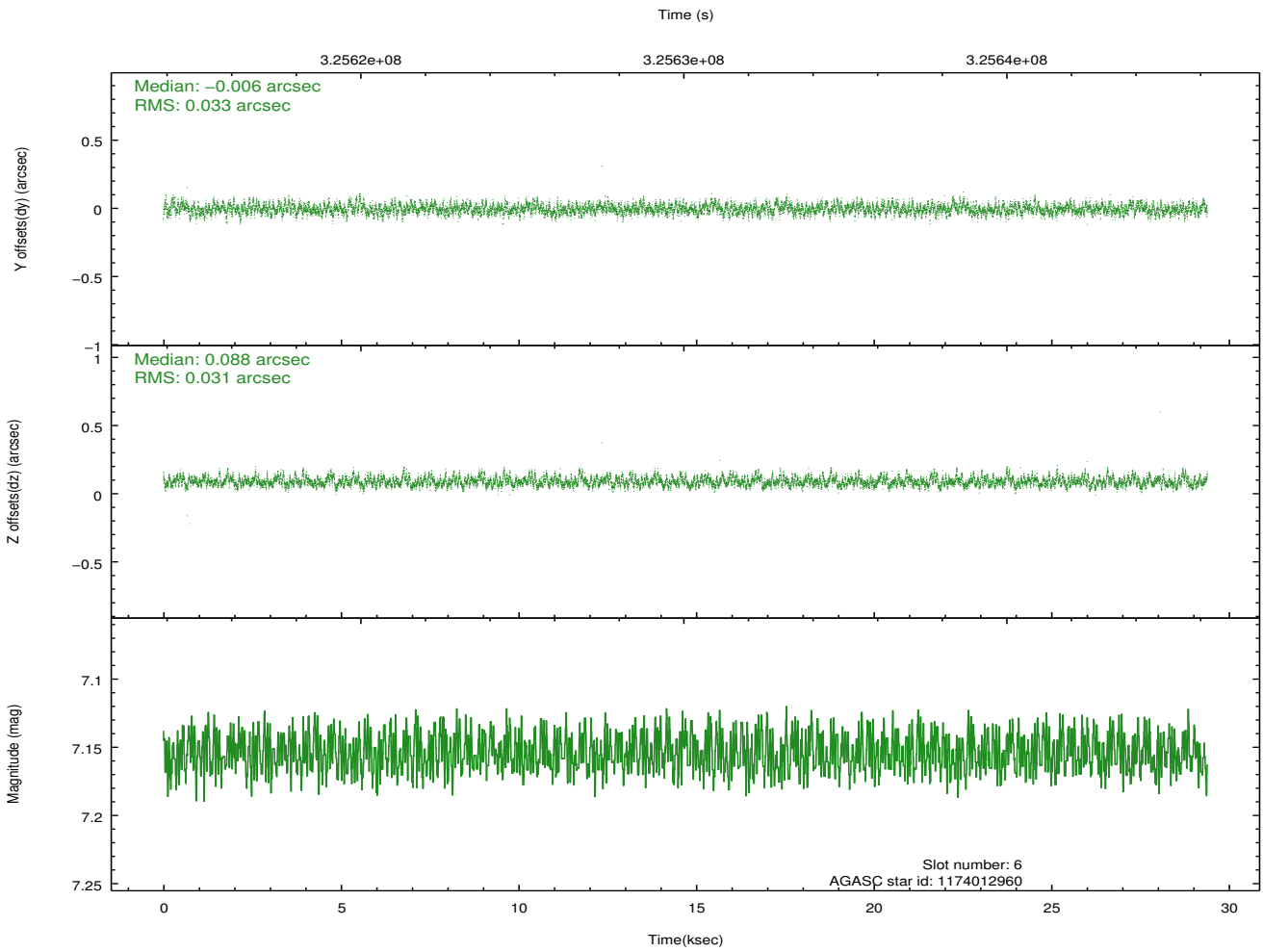
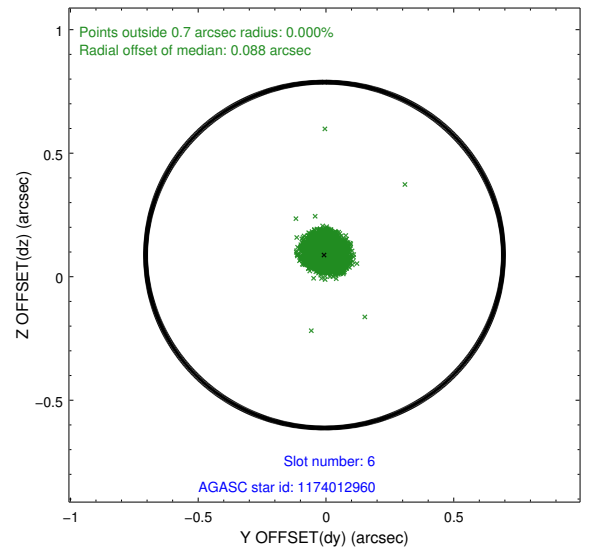
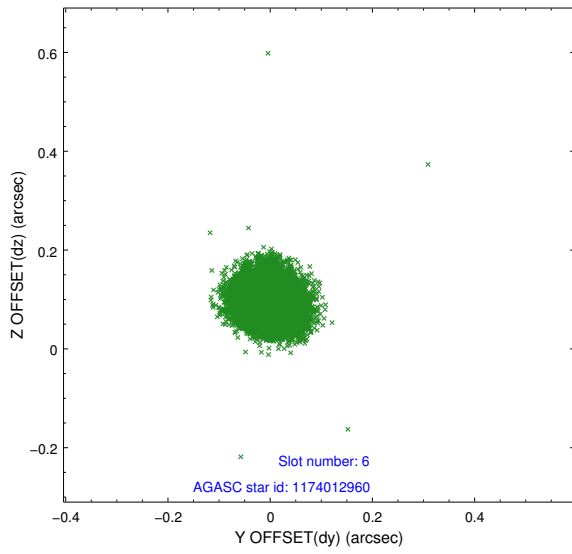
2.4.2 Slot 4



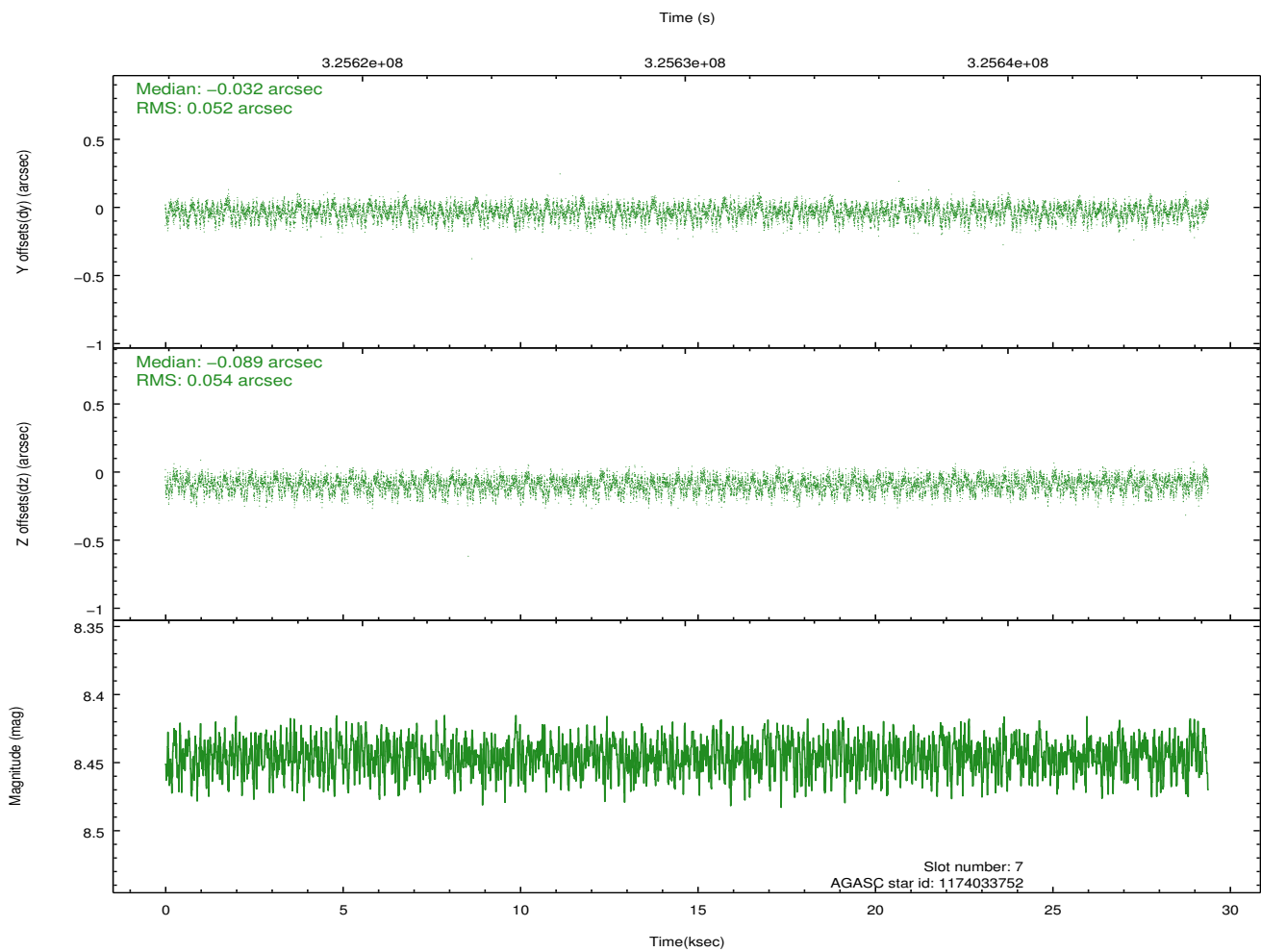
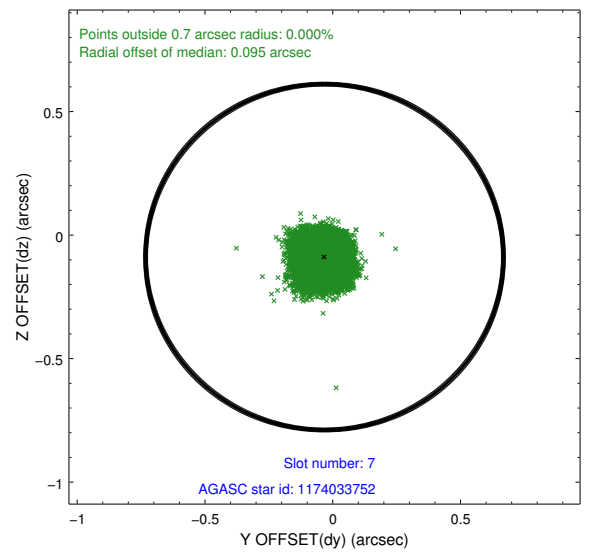
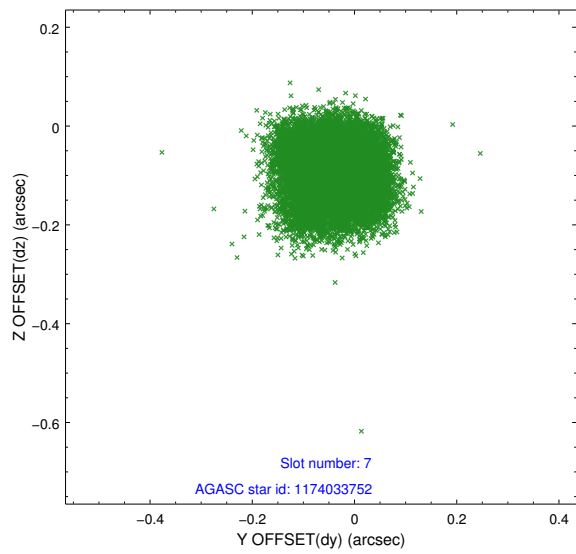
2.4.3 Slot 5



2.4.4 Slot 6

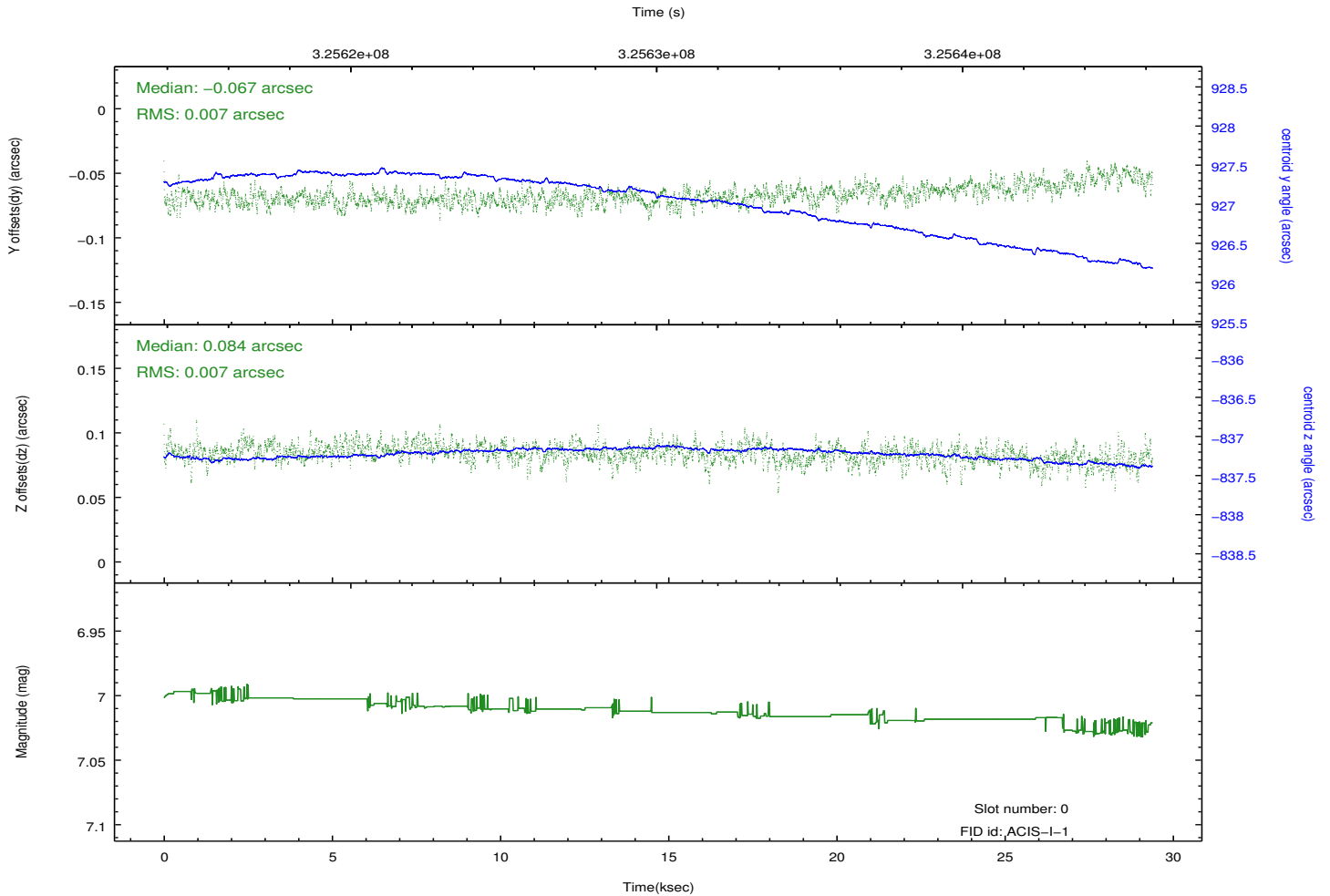
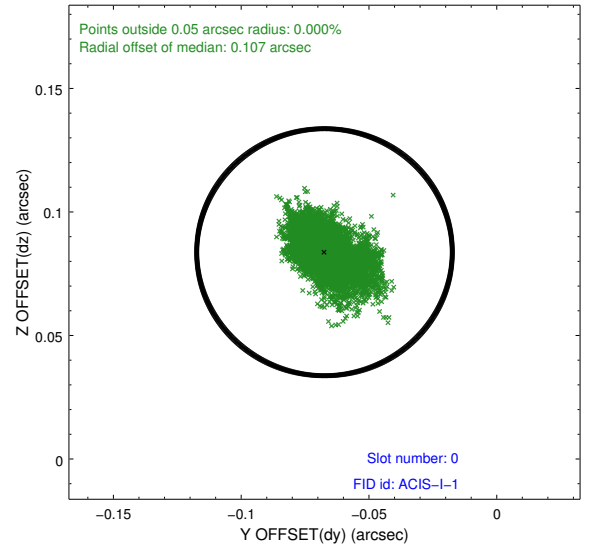
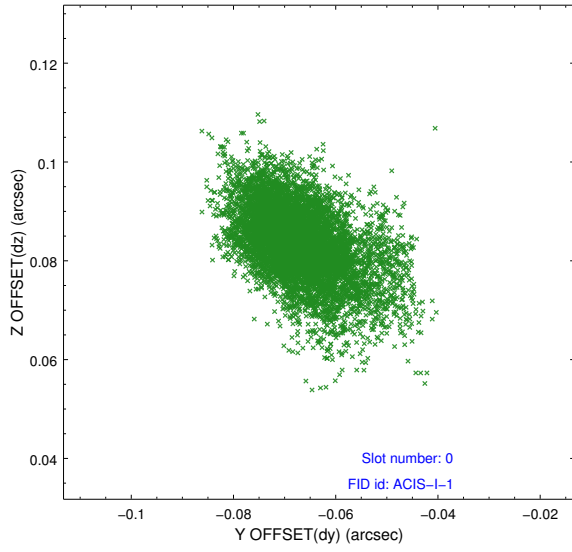


2.4.5 Slot 7

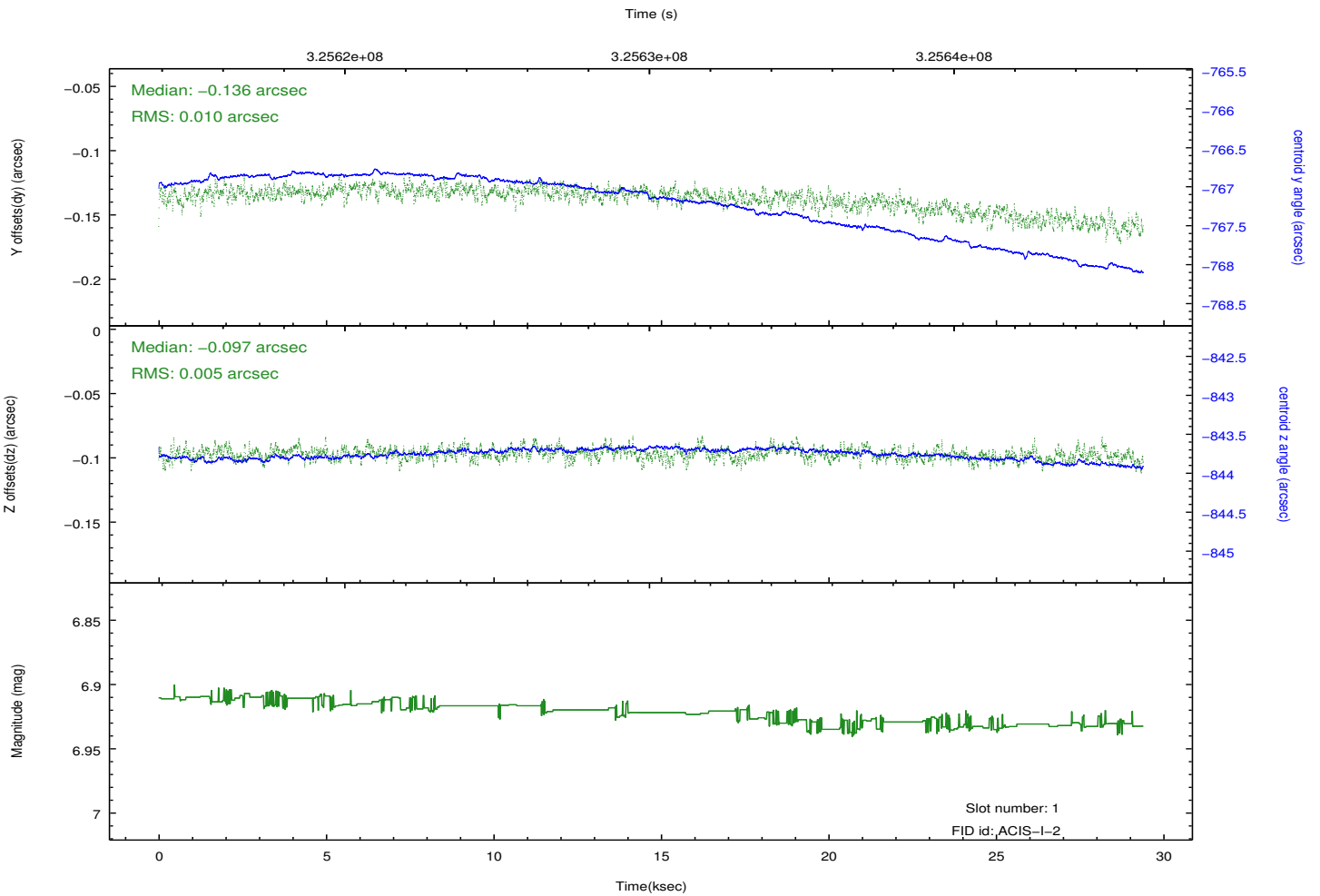
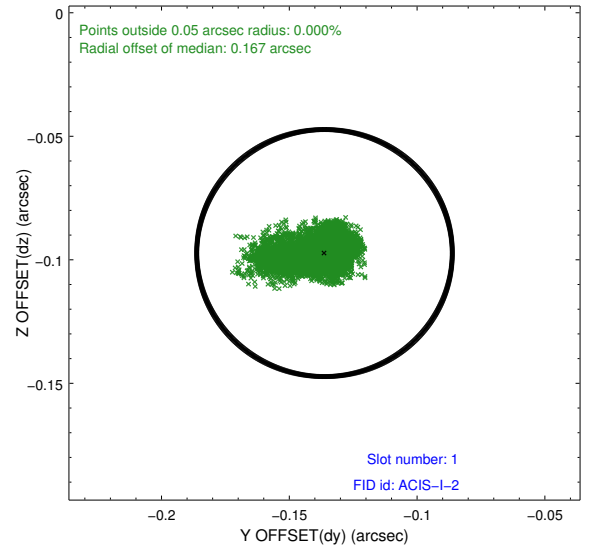
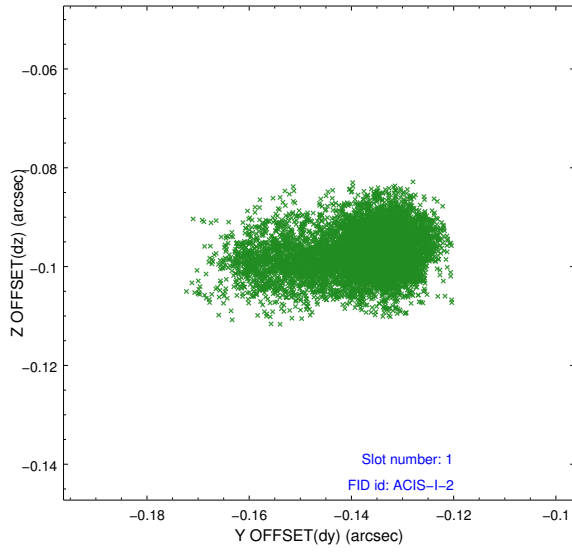


2.5 FID Slots

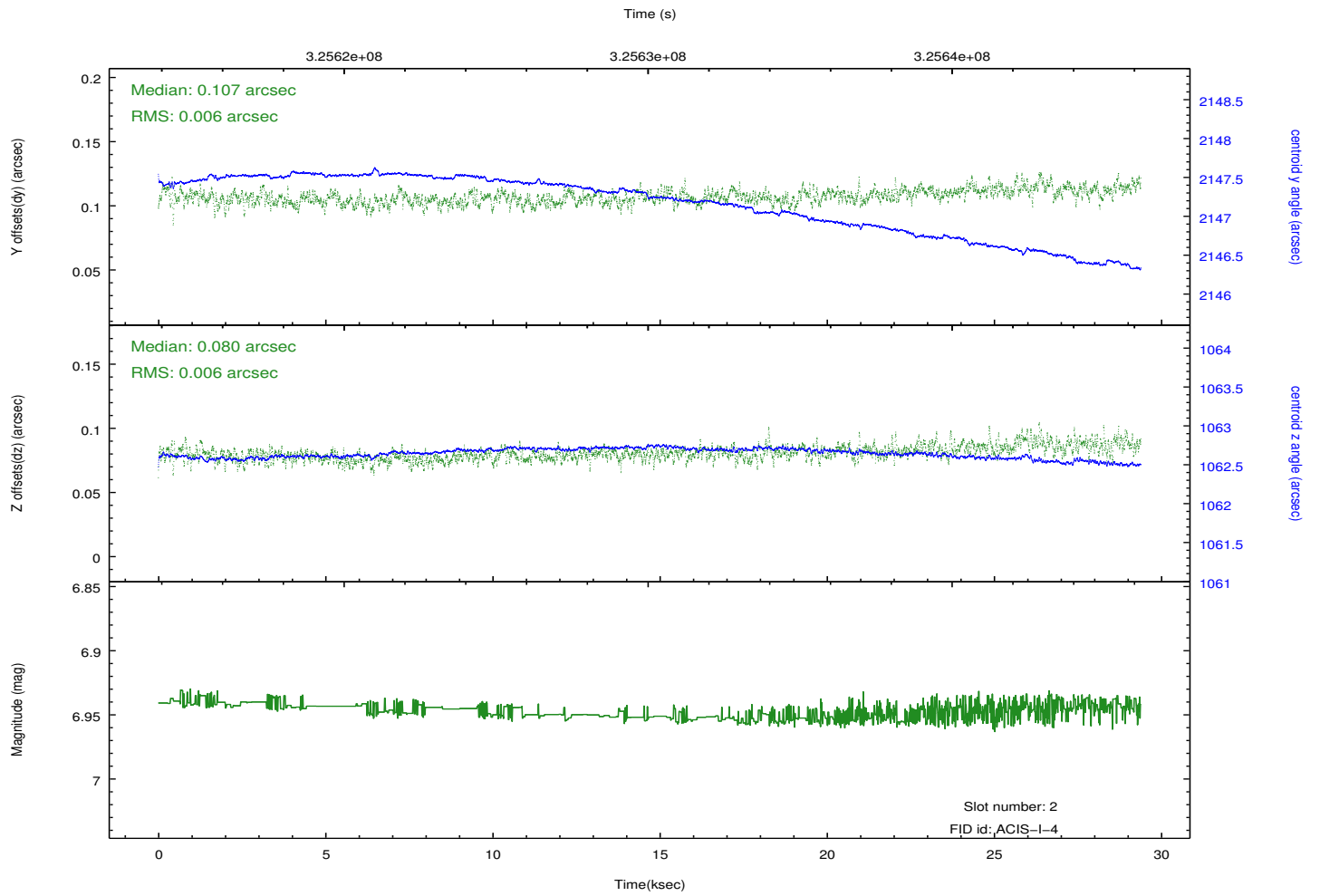
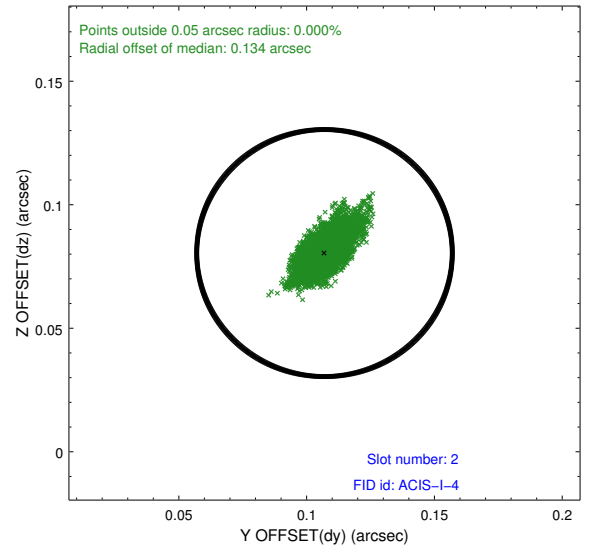
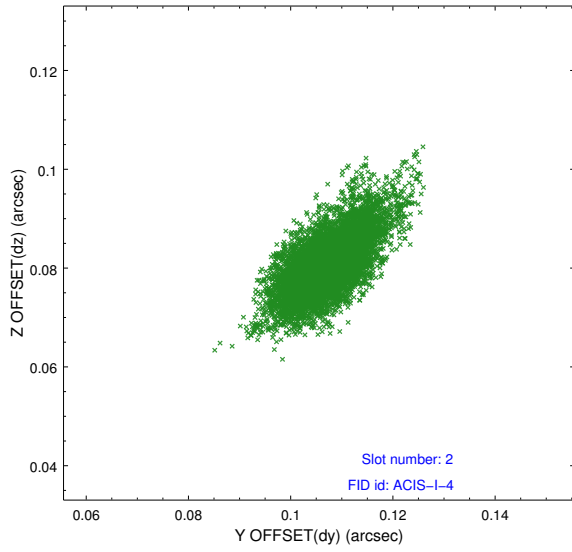
2.5.1 Slot 0



2.5.2 Slot 1



2.5.3 Slot 2



A Summary

A.1 Status

V&V Scientist	Jen Lauer
V&V Date (YYYY-MM-DD)	2012.05.15
V&V Edition	1
V&V Disposition and Status	OK
V&V Charge Time	28.8447998

A.2 Comments