

V&V Reference Report

L2 ASCDS Version : 8.4.5

Observation 999 - L2 Version 5
Chandra X-Ray Center

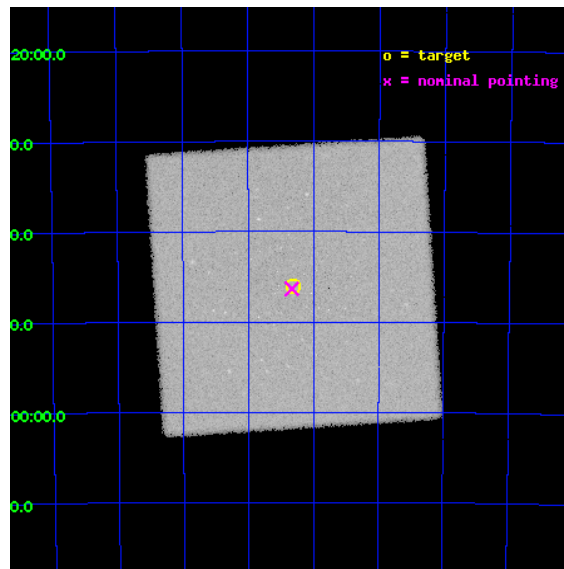
L2 Processing Date : Sep 11 2012

Contents

| | | |
|----------|-------------------------------|-----------|
| 1 | Front | 2 |
| 2 | OBI | 3 |
| 2.1 | OBI | 3 |
| 2.1.1 | Images | 3 |
| 2.1.2 | Parameters | 4 |
| 2.1.3 | Events | 4 |
| 2.2 | Compared Parameters | 5 |
| 2.3 | Aspect | 6 |
| 2.4 | Star Slots | 9 |
| 2.4.1 | Slot 3 | 9 |
| 2.4.2 | Slot 4 | 10 |
| 2.4.3 | Slot 5 | 11 |
| 2.4.4 | Slot 6 | 12 |
| 2.4.5 | Slot 7 | 13 |
| 2.5 | FID Slots | 14 |
| 2.5.1 | Slot 0 | 14 |
| 2.5.2 | Slot 1 | 15 |
| 2.5.3 | Slot 2 | 16 |
| A | Summary | 17 |
| A.1 | Status | 17 |
| A.2 | Comments | 17 |

1 Front

| | | |
|----------|--|---------------------------------------|
| seq_num | 290080 | Sequence number |
| obs_id | 999 | Observation id |
| title | HRC-I CALIBRATION OBSERVATION OF NGC2516 | Proposal title |
| observer | Dr. CXC Calibration | Principal investigator |
| object | NGC2516 | Source name |
| ra_targ | 119.580417 | Observer's specified target RA [deg] |
| dec_targ | -60.768194 | Observer's specified target Dec [deg] |
| ra_nom | 119.58323810364 | Nominal RA [deg] |
| dec_nom | -60.772367358701 | Nominal Dec [deg] |
| roll_nom | 311.29405850532 | Nominal Roll [deg] |
| revision | 5 | Processing version of data |
| ontime | 18178.631952479 | [s] |
| livetime | 18080.712650539 | Ontime multiplied by DTCOR |
| l2events | 548297 | Number of level 2 events |

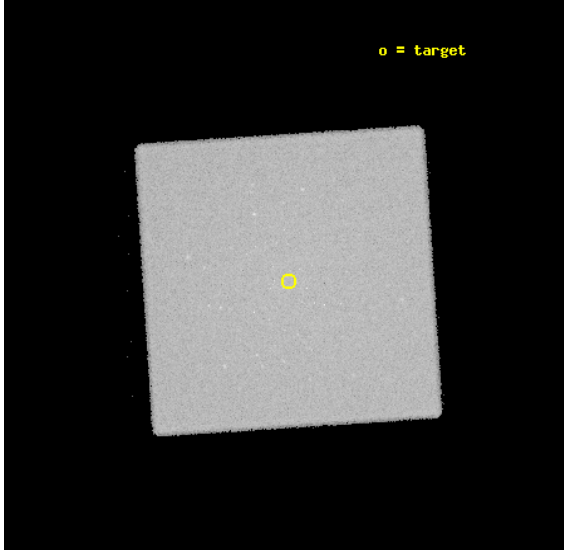


2 OBI

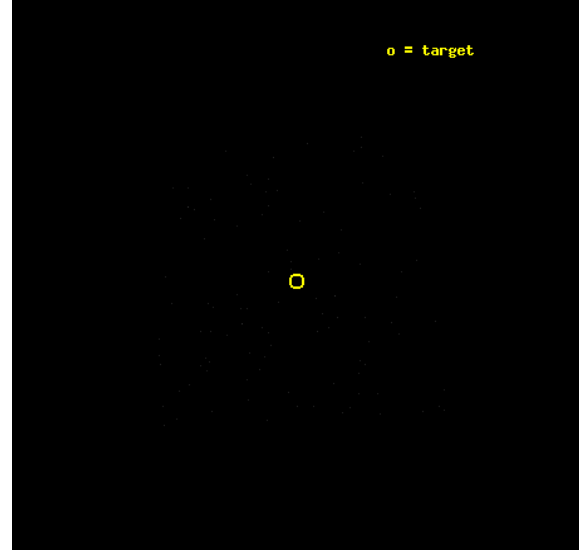
2.1 OBI

2.1.1 Images

Level 1 Image



Level 1 Bad Events



2.1.2 Parameters

| | | | | | |
|----------|---------------------|--------------------------------|----------------|-----------------|---|
| obi_num | 1 | Obi number | sched_exp_time | 18000.000000 | [s] Scheduled observation exposure time |
| ascdsver | 8.4.5 | Processing system revision | ontime | 18178.631952479 | [s] |
| caldbver | 4.5.1.1 | | l1events | 838162 | Number of level 1 events |
| date | 2012-09-11T23:56:49 | Date and time of file creation | | | |
| revision | 5 | Processing version of data | | | |

2.1.3 Events

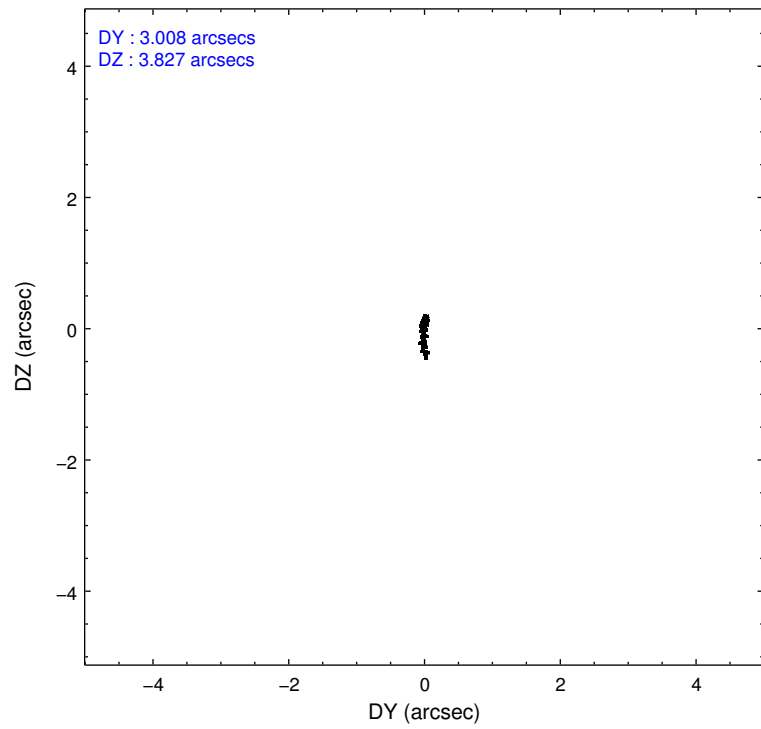
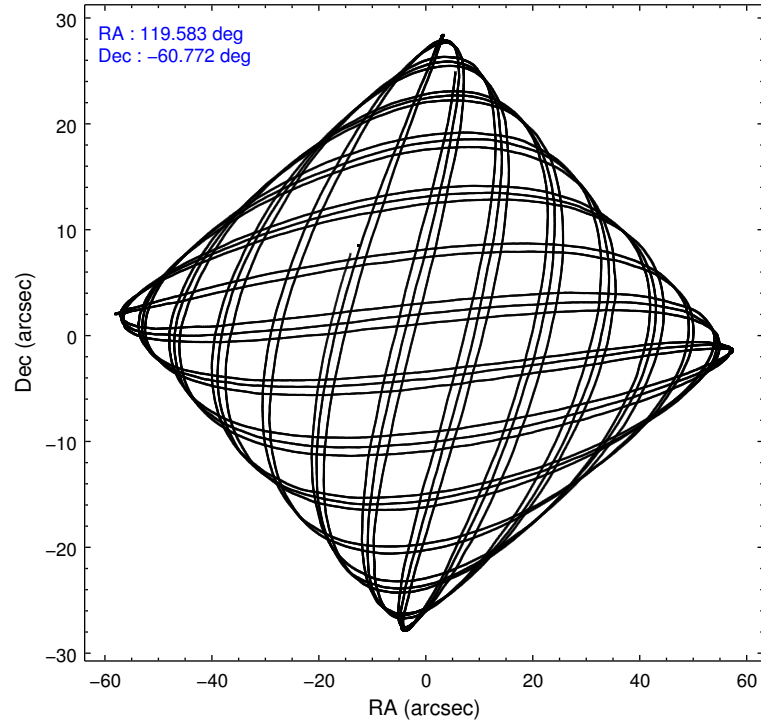
Level 1 Events

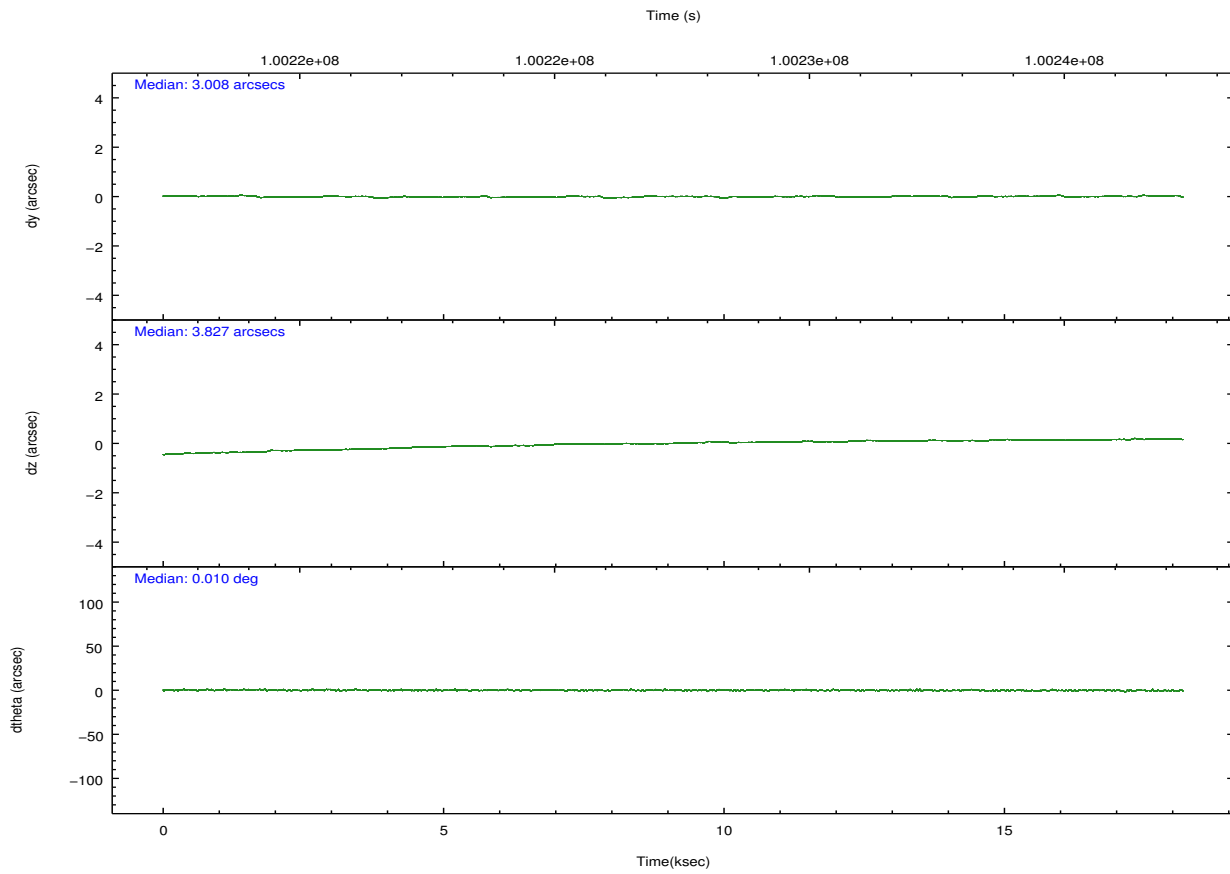
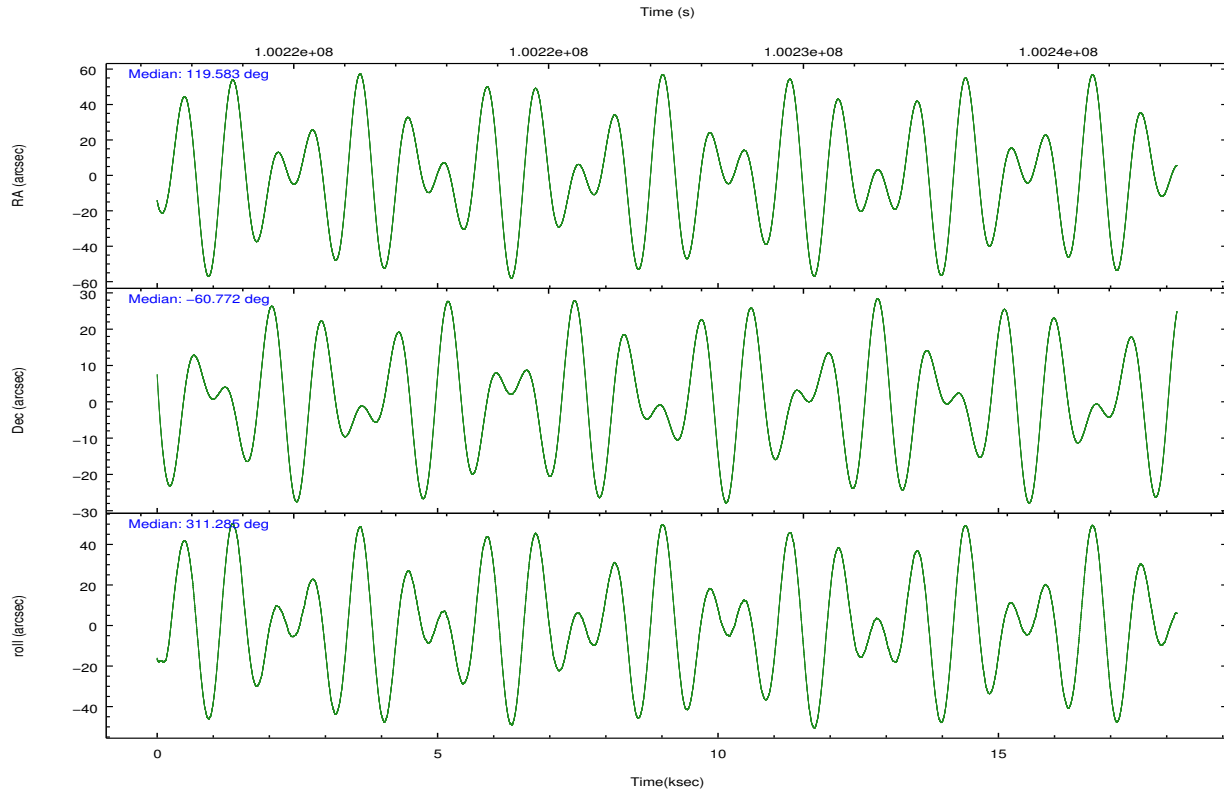
| | segment 0 |
|-----------------|----------------------|
| level 1 events | 838162 |
| rejected events | 42560 |
| rejected % | 5% |

2.2 Compared Parameters

| Parameter | Planned | Actual | Parameter | Planned | Actual |
|-----------------------------------|---------------------|----------------------|------------------------------|-----------|---------|
| Instrument | HRC | HRC | Obspar format version number | 7 | 7 |
| Detector | HRC-I | HRC-I | Obspar file type | PREDICTED | ACTUAL |
| Grating | NONE | NONE | Obspar update status | NONE | UPDATED |
| Data mode | OBSERVING | OBSERVING | | | |
| Observation mode | POINTING | POINTING | | | |
| [deg] Pointing RA | 119.530173 | 119.5832381036392 | | | |
| [deg] Pointing Dec | -60.764042 | -60.7723673587013 | | | |
| [deg] Pointing Roll | 311.343242 | 311.2940585053174 | | | |
| [s] Window start time (MET) | 97372864.184000 | 97372864.184000 | | | |
| [s] Window stop time (MET) | 102124864.184000 | 102124864.184000 | | | |
| [mm] SIM focus pos | -1.040293 | -1.038866356238299 | | | |
| [mm] SIM defocus | 0 | 0.001426264420575141 | | | |
| [mm] SIM translation stage pos | 126.985494 | 126.9804656746847 | | | |
| [mm] SIM translation stage offset | 0 | 0.005023216916882234 | | | |
| [s] Observation start time (MET) | 100218416.184000 | 100217150.65133 | | | |
| Observation start date | 2001-03-05T22:25:52 | 2001-03-05T22:05:50 | | | |
| [s] Observation end time (MET) | 100236416.184000 | 100237219.12711 | | | |
| Observation end date | 2001-03-06T03:25:52 | 2001-03-06T03:40:19 | | | |

2.3 Aspect



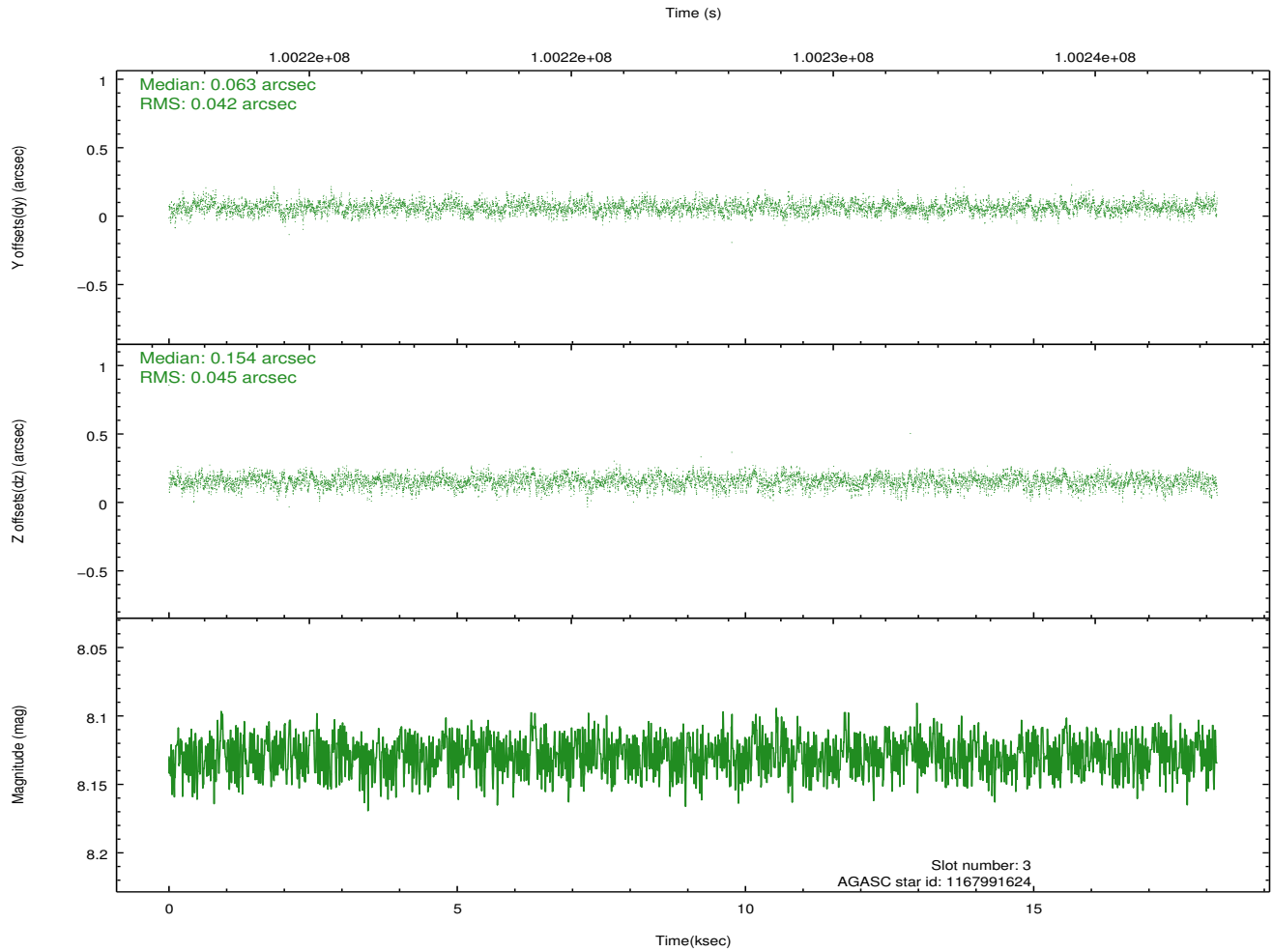
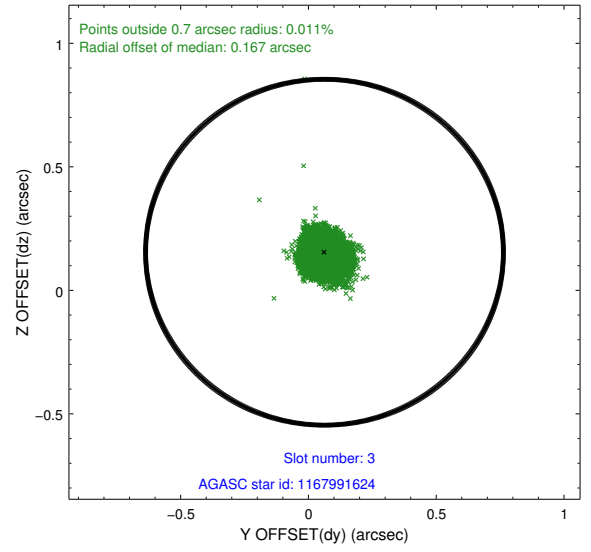
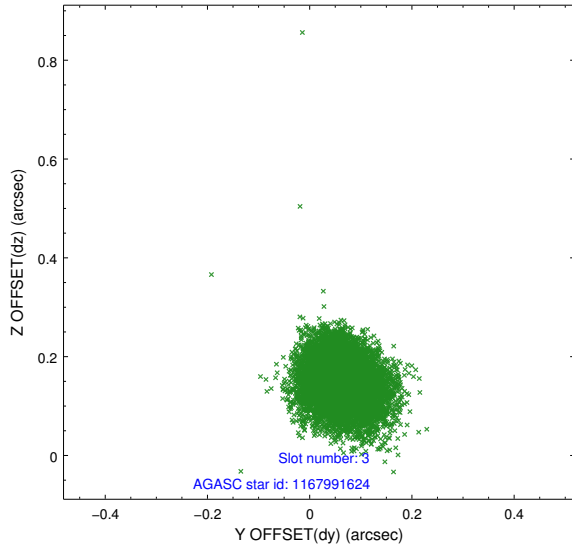


Slot Statistics

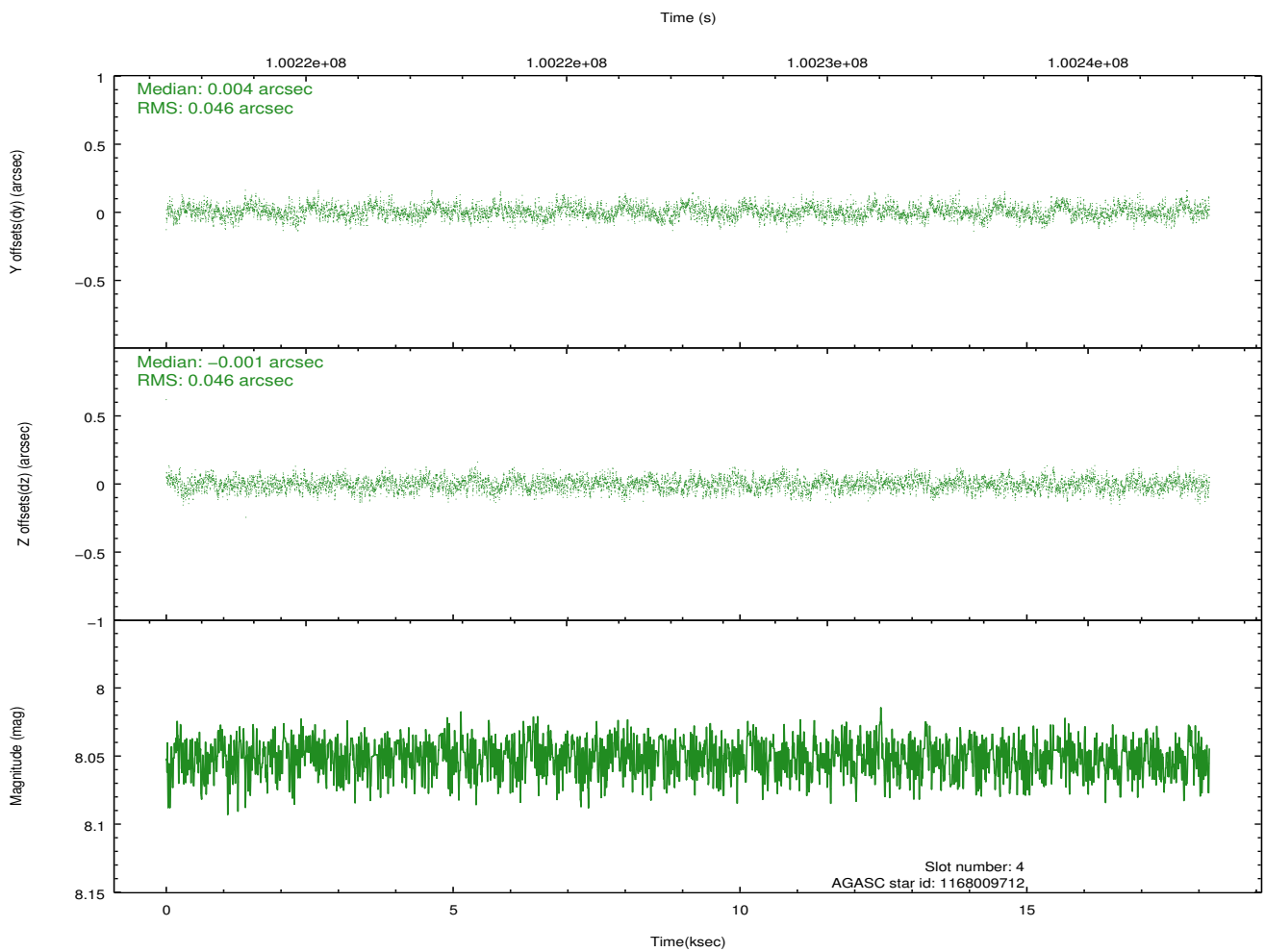
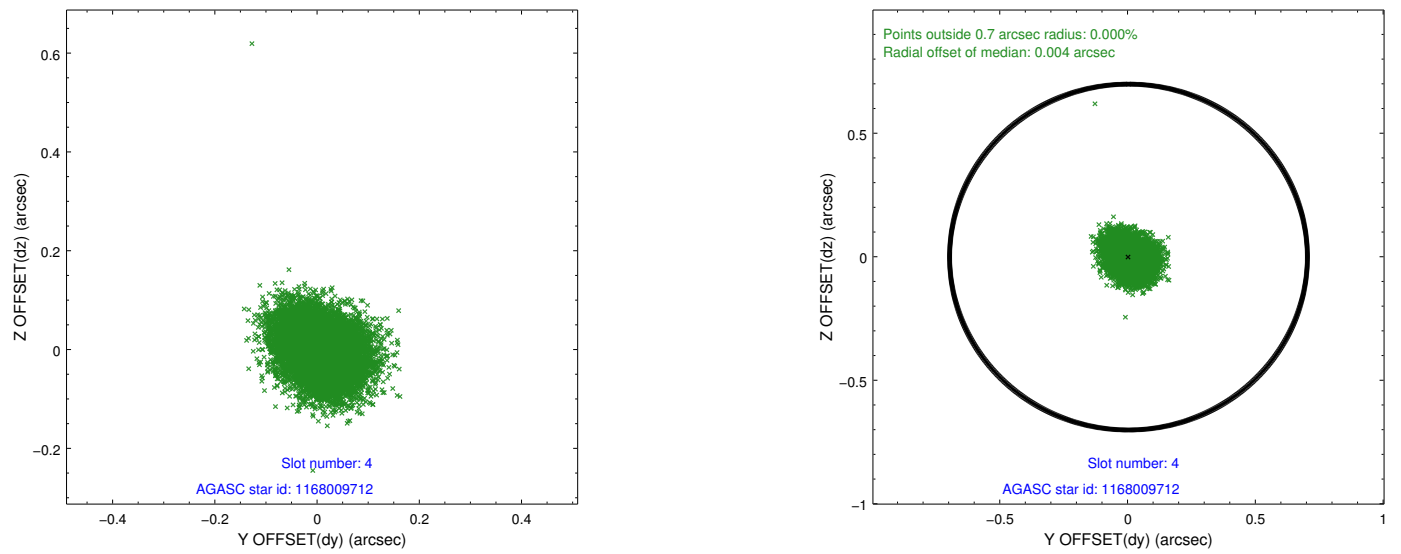
| slot | status | id | mag | n_pts | med_dy | med_dz | dr1 | dr2 | ra | dec | mean_y | mean_z |
|------|--------|------------|------|-------|--------|--------|-------|-------|------------|------------|----------|----------|
| 0 | FID | HRC-I-1 | 6.96 | 4433 | 0.065 | 0.054 | 0.009 | 0.015 | 0.000000 | 0.000000 | -758.45 | -1291.42 |
| 1 | FID | HRC-I-3 | 7.04 | 4433 | 0.007 | -0.072 | 0.010 | 0.019 | 0.000000 | 0.000000 | -1187.11 | 1012.74 |
| 2 | FID | HRC-I-4 | 6.99 | 4435 | 0.041 | -0.071 | 0.007 | 0.011 | 0.000000 | 0.000000 | 1284.11 | 1010.80 |
| 3 | GUIDE | 1167991624 | 8.13 | 8864 | 0.063 | 0.154 | 0.065 | 0.105 | 119.338035 | -60.767508 | -213.44 | -262.12 |
| 4 | GUIDE | 1168009712 | 8.05 | 8867 | 0.004 | -0.001 | 0.070 | 0.110 | 119.512143 | -60.614801 | -424.63 | 330.84 |
| 5 | GUIDE | 1167986712 | 8.44 | 8866 | -0.032 | -0.055 | 0.060 | 0.098 | 119.099343 | -60.382718 | -1535.37 | 329.37 |
| 6 | GUIDE | 1167996384 | 8.57 | 8870 | -0.010 | 0.041 | 0.074 | 0.117 | 118.960902 | -61.169202 | 445.40 | -1708.18 |
| 7 | GUIDE | 1169702696 | 8.74 | 8868 | -0.020 | -0.133 | 0.087 | 0.134 | 120.944763 | -60.544109 | 1079.46 | 2385.00 |

2.4 Star Slots

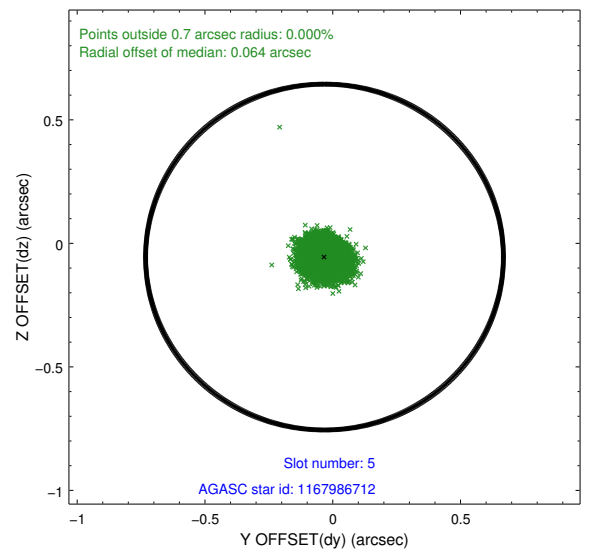
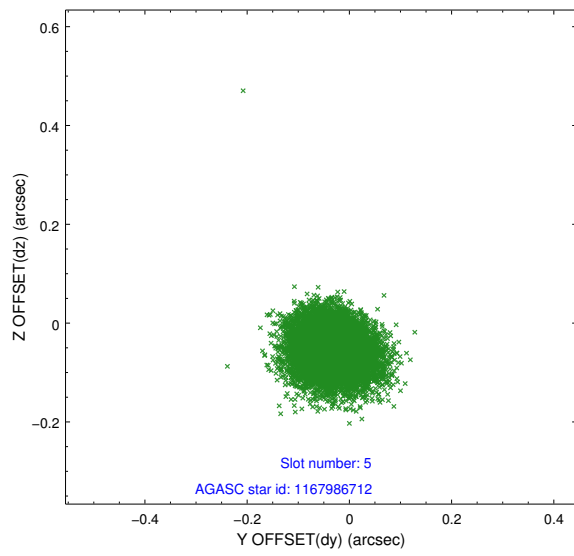
2.4.1 Slot 3



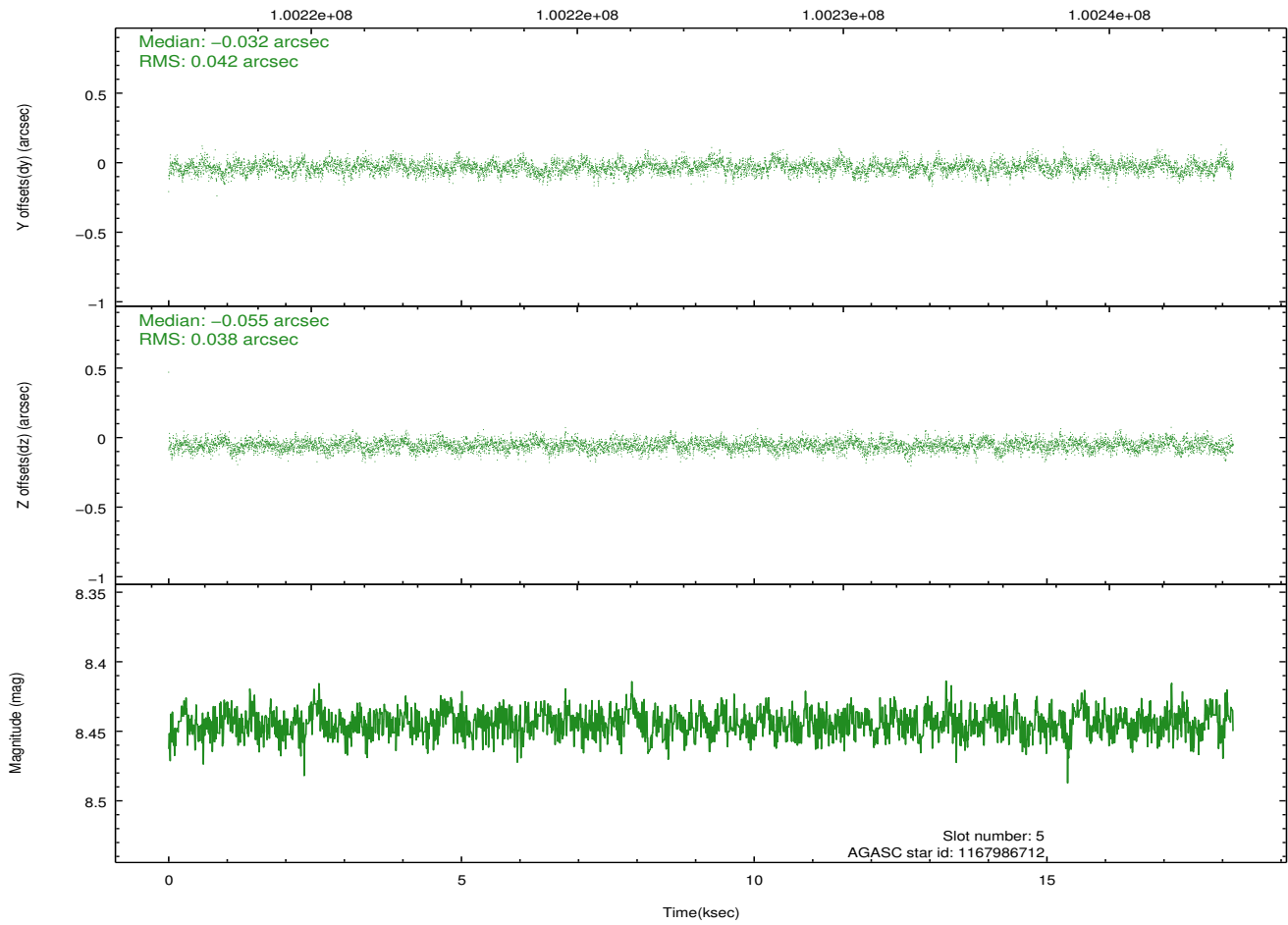
2.4.2 Slot 4



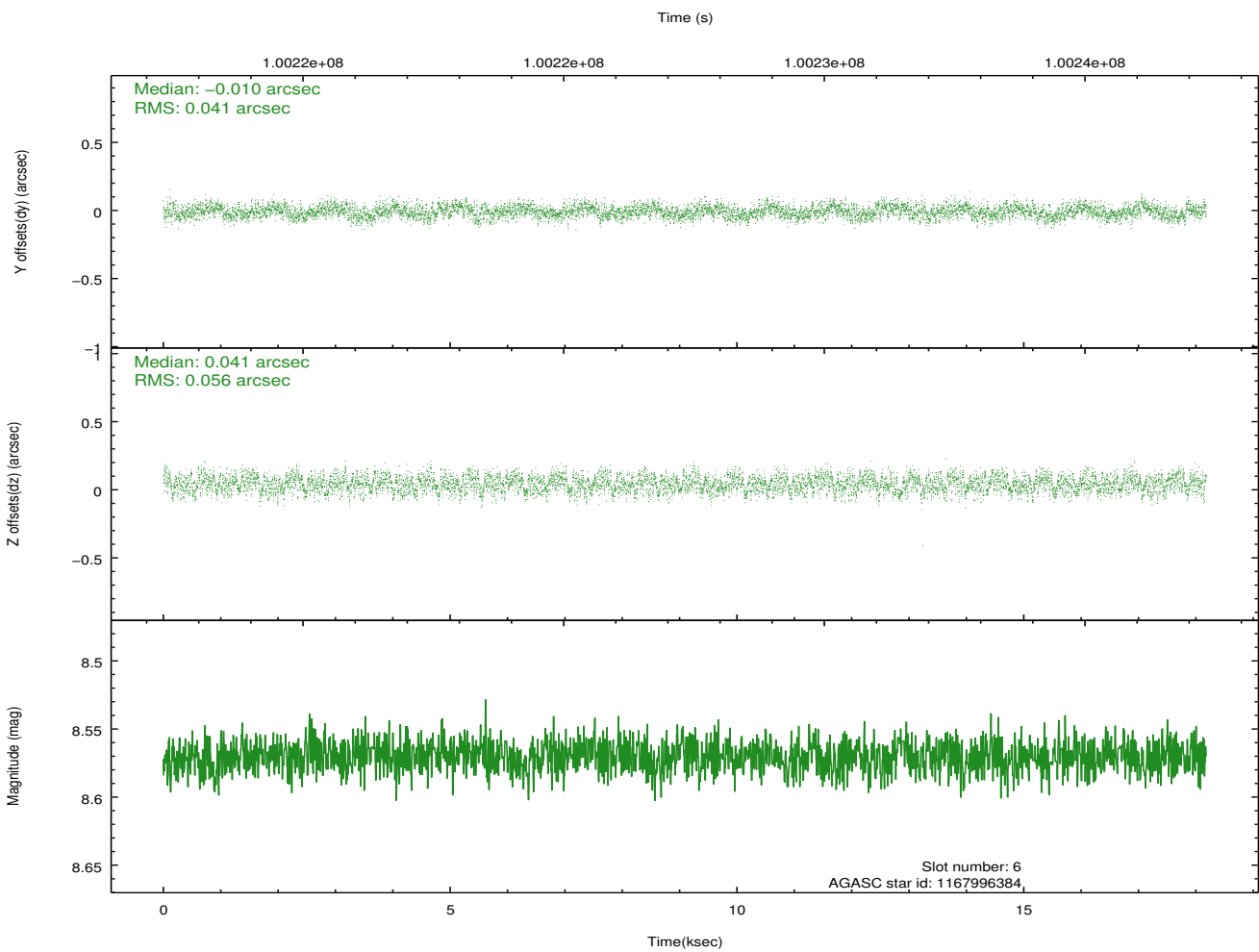
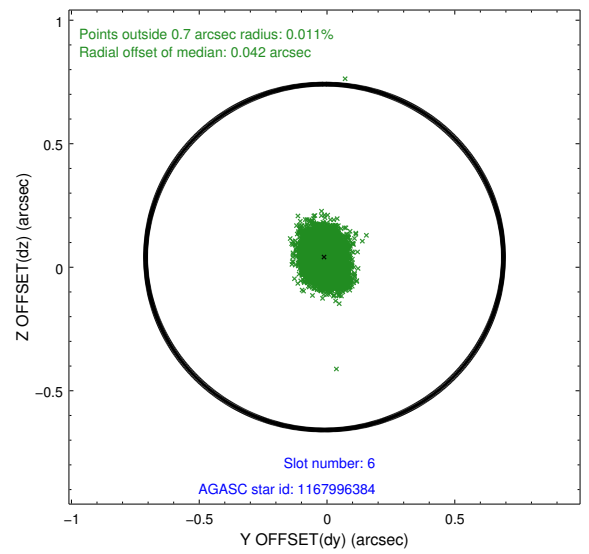
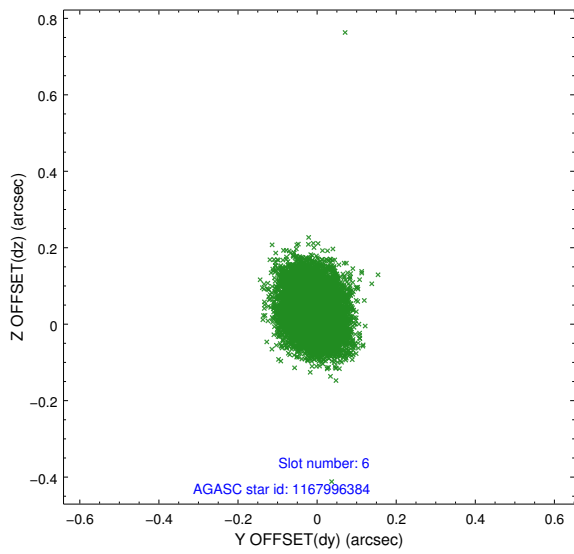
2.4.3 Slot 5



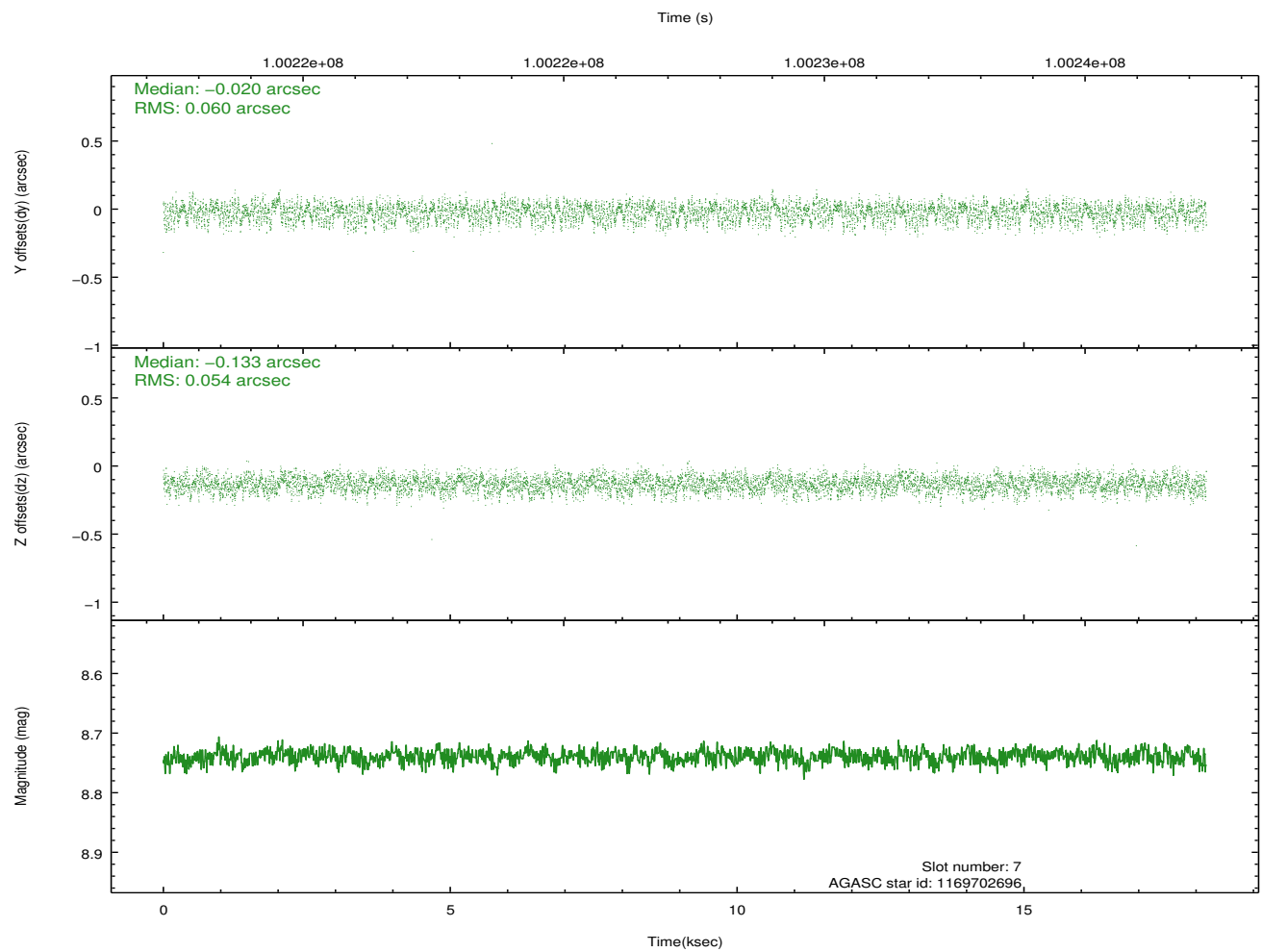
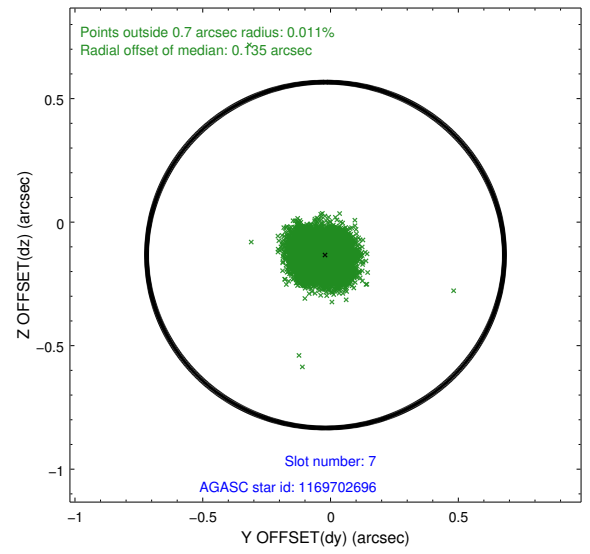
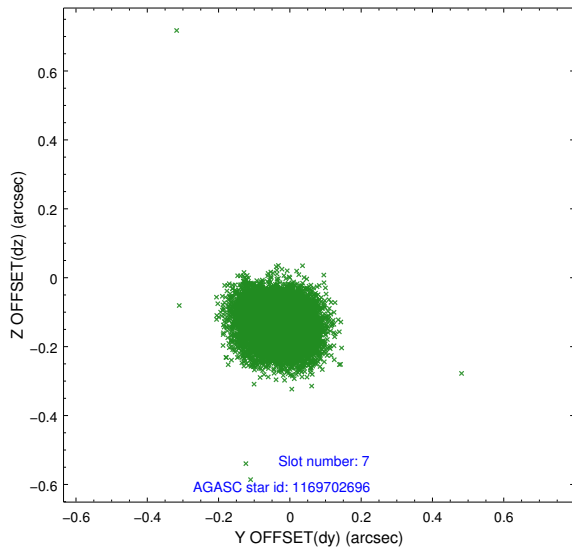
Time (s)



2.4.4 Slot 6

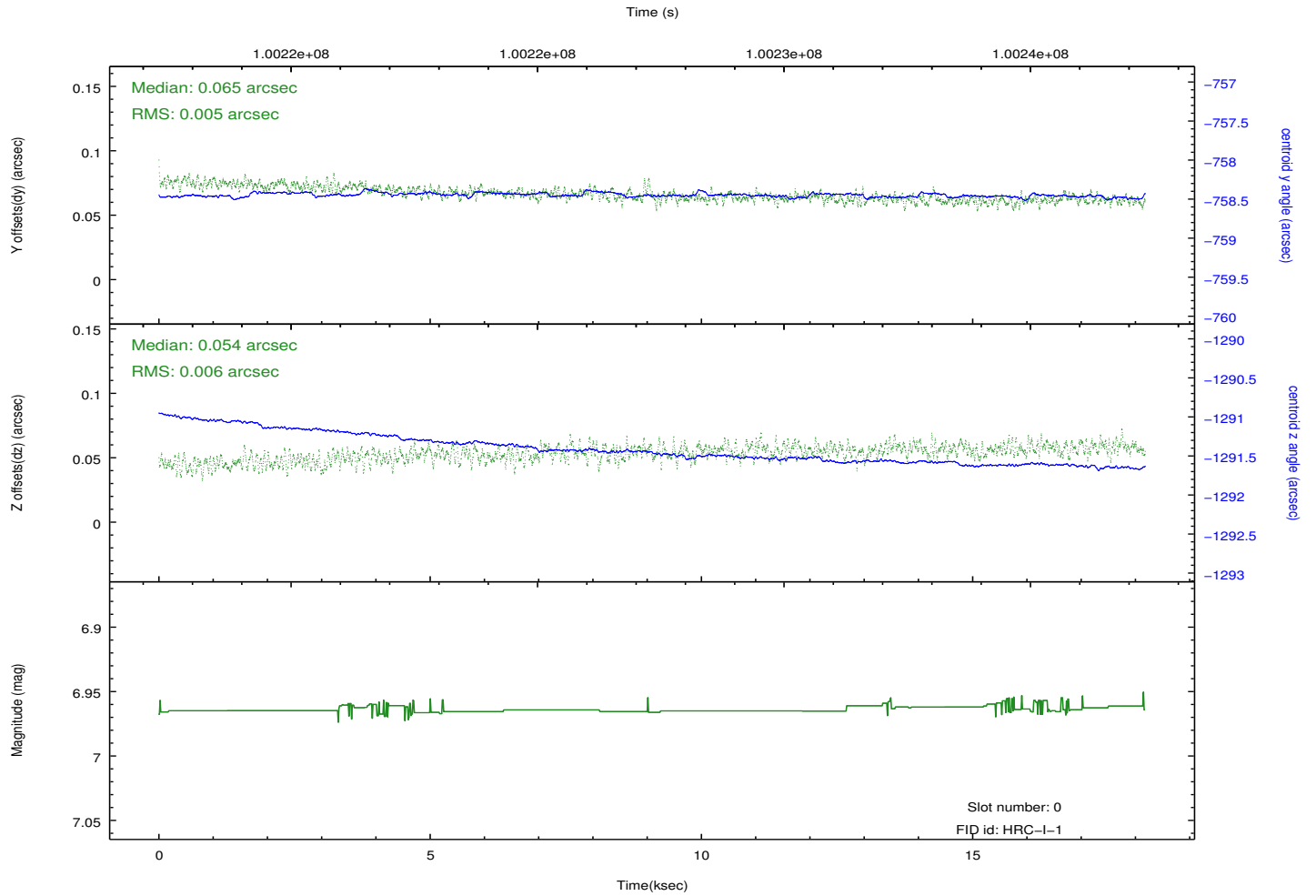
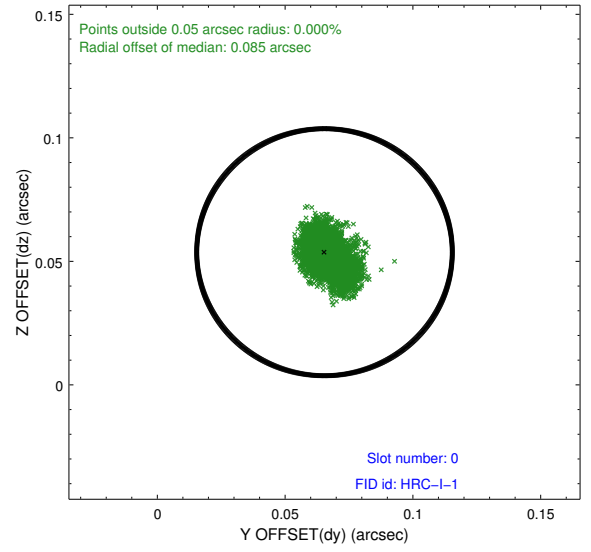
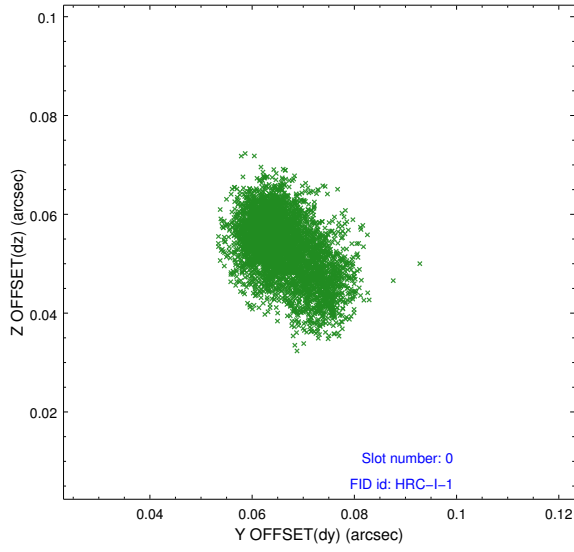


2.4.5 Slot 7

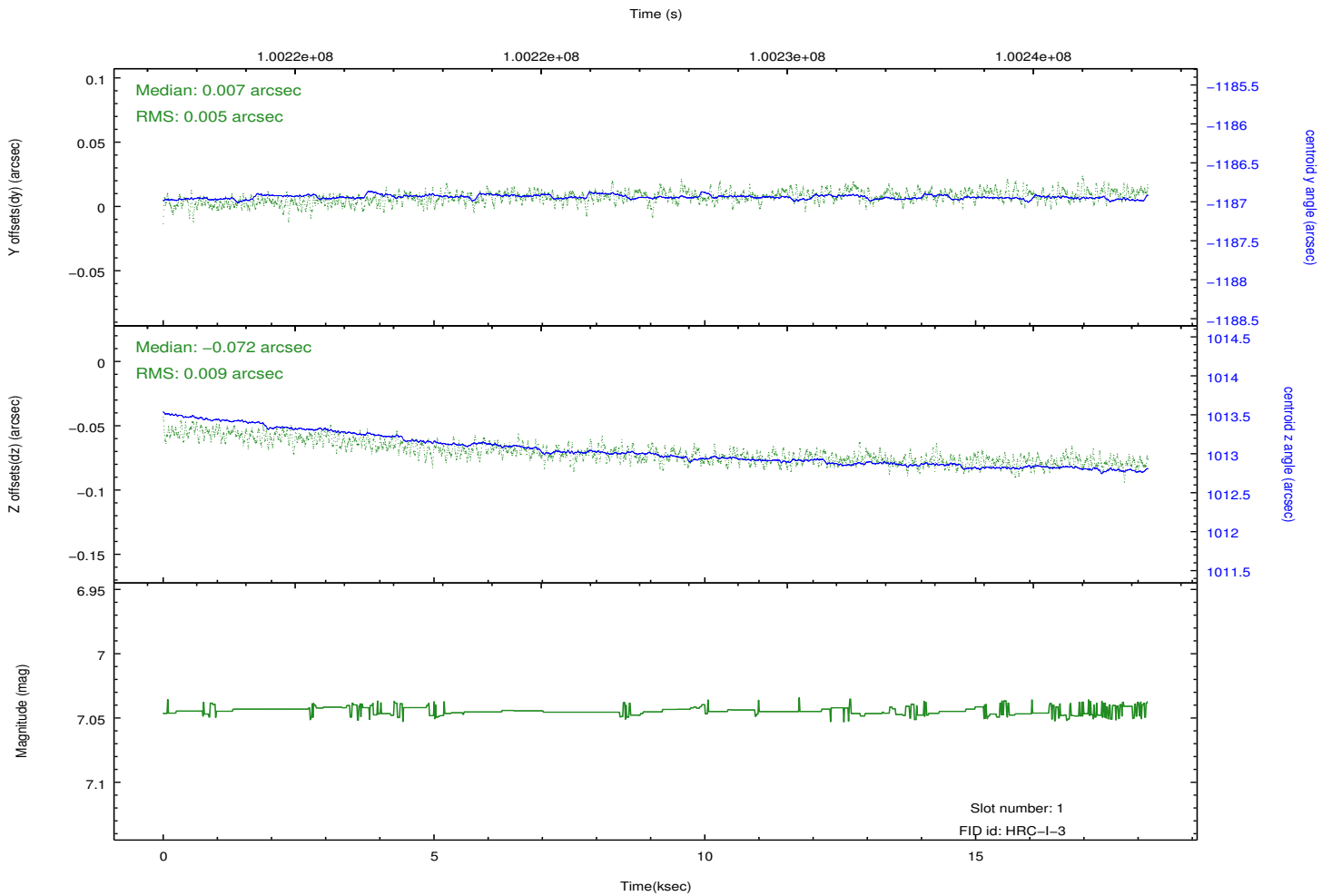
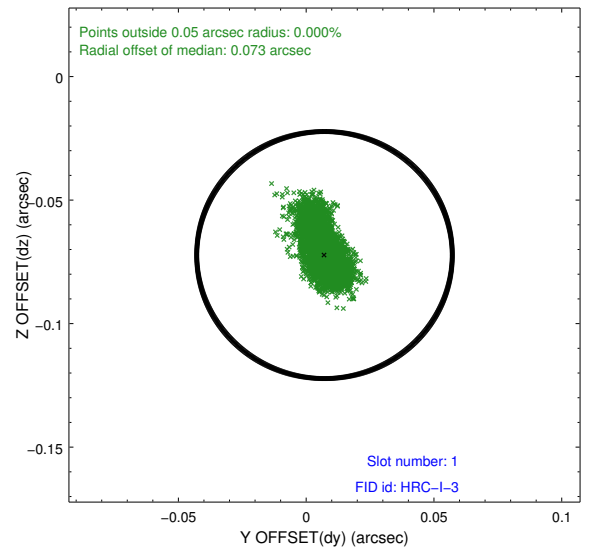
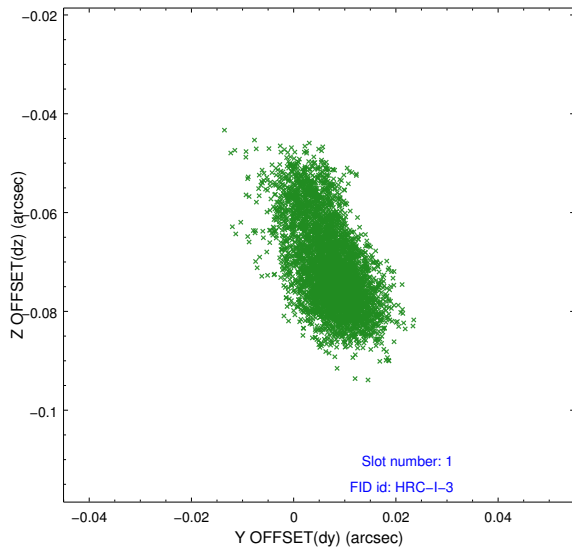


2.5 FID Slots

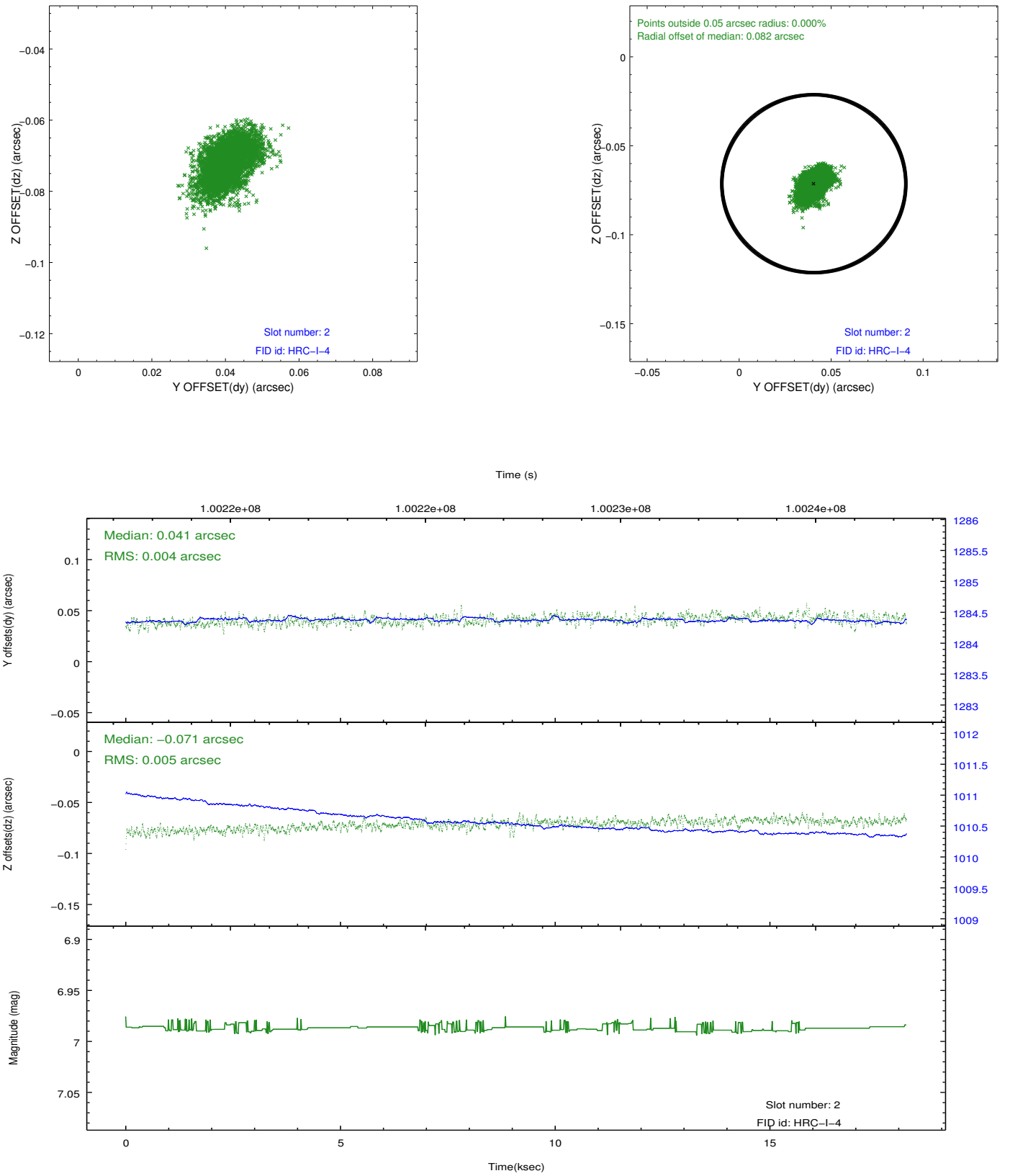
2.5.1 Slot 0



2.5.2 Slot 1



2.5.3 Slot 2



A Summary

A.1 Status

| | |
|----------------------------|------------|
| V&V Scientist | Jen Lauer |
| V&V Date (YYYY-MM-DD) | 2012.09.17 |
| V&V Edition | 1 |
| V&V Disposition and Status | OK |
| V&V Charge Time | 18.172 |

A.2 Comments

Window constraint met.