

V&V Reference Report

L2 ASCDS Version : 7.6.10

Observation 61968 - L2 Version 001
Chandra X-Ray Center

L2 Processing Date : Jun 2 2007

Contents

1	Front	2
2	OBI	3
2.1	OBI	3
2.1.1	Images	3
2.1.2	Bias	3
2.1.3	Parameters	4
2.1.4	Events	4
2.2	Compared Parameters	5
2.3	Star Slots	6
2.4	FID Slots	6
A	Summary	7
A.1	Status	7
A.2	Comments	7

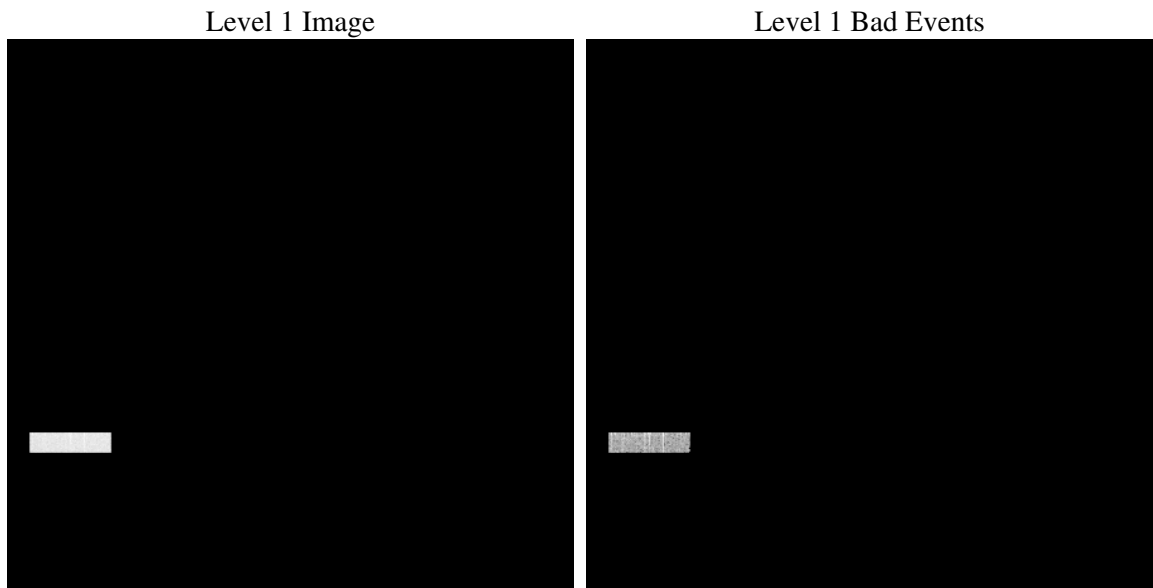
1 Front

seq_num	
obs_id	61968
title	ACIS-4 diagnostics; squeegee IX
observer	CHANDRA engineering request/realtime commanding
object	
dtcycle	0
cycle	P
ra_targ	0.0
dec_targ	0.0
ra_nom	176.83554274046
dec_nom	-44.386820022909
roll_nom	216.51707754999
revision	3
ontime	4408.6726843864
livetime	4262.8821160186
ontime4	4408.6726843864
l2events	70472

2 OBI

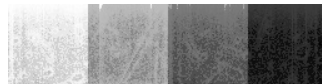
2.1 OBI

2.1.1 Images



2.1.2 Bias

Chip 4



2.1.3 Parameters

obi_num	0
ascdsver	7.6.10
caldbver	3.4.0
date	2007-06-02T14:08:19
revision	3

sched_exp_time	0.0
ontime	4408.6726843864
ontime4	4408.6726843864
l1events	83858

2.1.4 Events

	ccd 4
level 1 events	83858
rejected events	12537
rejected %	14%

	ccd 4
grade 0 events	3725
	4%
grade 1 events	16
	0%
grade 2 events	52296
	62%
grade 3 events	460
	0%
grade 4 events	422
	0%
grade 5 events	495
	0%
grade 6 events	14441
	17%
grade 7 events	12003
	14%

2.2 Compared Parameters

Parameter	Planned	Actual	Parameter	Planned	Actual
Instrument	ACIS	ACIS	Obspar format version number	6	6
Detector	ACIS-4	ACIS-4	Obspar file type	PREDICTED	ACTUAL
Grating	NONE	NONE	Obspar update status	NONE	UPDATED
Data mode	FAINT	FAINT	On-chip summing requested	N	N
Observation mode	SECONDARY	SECONDARY	Subarray requested	NONE	1/4
Pointing RA	0	176.8355427404567	Subarray start row	0	769
Pointing Dec	0	-44.38682002290896	Subarray row count	1024	256
Pointing Roll	0.0	216.517077549989	Alternating exposures requested	N	N
SIM focus pos (mm)	-0.684267	-0.6828225247311905	Primary exposure time	0.000000	1.2
SIM defocus (mm)	0	0.8505141146731063			
SIM translation stage pos (mm)	-190.132523	250.466033080201			
SIM translation stage offset (mm)	0	-0.01005468664627074			
Observation start time	82462391.844	82462391.07568499			
Observation start date	2000-08-12T10:13:12	2000-08-12T10:13:11			
Observation end time	82505661.19599999	82505660.42731			
Observation end date	2000-08-12T22:14:21	2000-08-12T22:14:20			
Read mode	TIMED	TIMED			

2.3 Star Slots

2.4 FID Slots

A Summary

A.1 Status

V&V Scientist	Jen Lauer
V&V Date (YYYY-MM-DD)	2007.06.04
V&V Edition	1
V&V Disposition and Status	OK
V&V Charge Time	4.40867268

A.2 Comments