

# V&V Reference Report

## L2 ASCDS Version : 7.6.10

Observation 62876 - L2 Version 001  
Chandra X-Ray Center

L2 Processing Date : Jun 1 2007

## Contents

<b>1</b>	<b>Front</b>	<b>2</b>
<b>2</b>	<b>OBI</b>	<b>3</b>
2.1	OBI . . . . .	3
2.1.1	Images . . . . .	3
2.1.2	Bias . . . . .	3
2.1.3	Parameters . . . . .	4
2.1.4	Events . . . . .	4
2.2	Compared Parameters . . . . .	5
2.3	Star Slots . . . . .	6
2.4	FID Slots . . . . .	6
<b>A</b>	<b>Summary</b>	<b>7</b>
A.1	Status . . . . .	7
A.2	Comments . . . . .	7

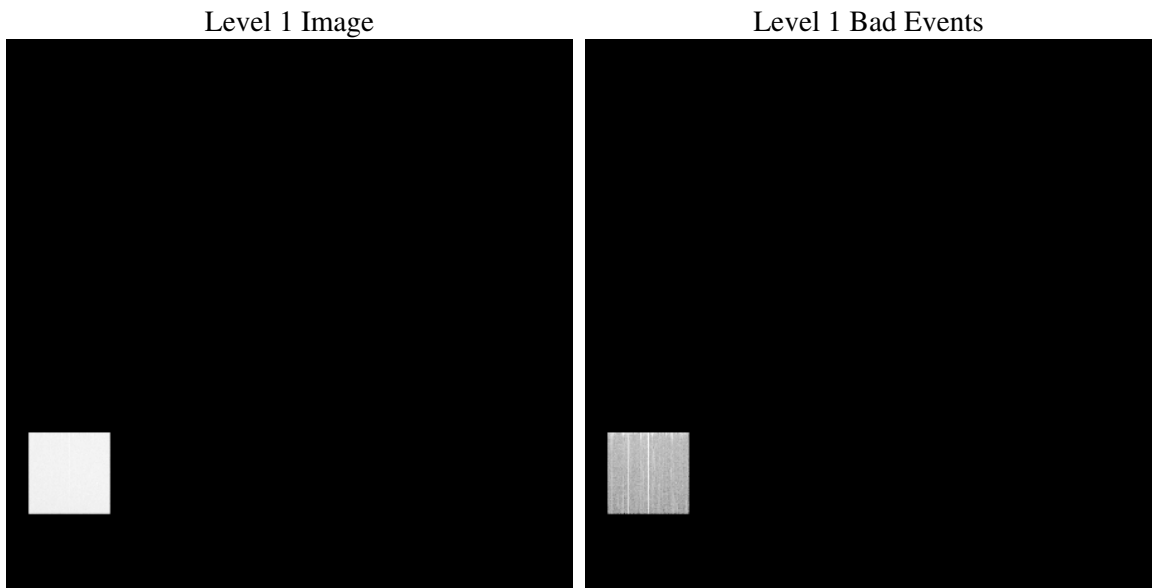
# 1 Front

seq_num	&#160
obs_id	62876
title	ACIS-4 diagnostics; squeegee VII; CAP 625B
observer	CHANDRA engineering request/realtime commanding
object	&#160
dtcycle	0
cycle	P
ra_targ	0.0
dec_targ	0.0
ra_nom	52.273058845528
dec_nom	31.326869899566
roll_nom	95.576528160095
revision	4
ontime	30769.199949056
livetime	30083.30069325
ontime4	30769.199949056
l2events	1748261

## 2 OBI

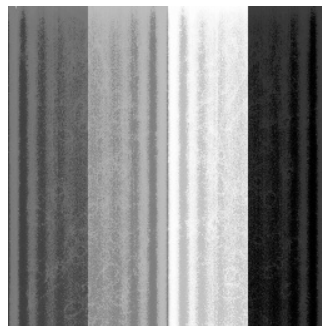
### 2.1 OBI

#### 2.1.1 Images



#### 2.1.2 Bias

Chip 4



### 2.1.3 Parameters

obi_num	0
ascdsver	7.6.10
caldbver	3.4.0
date	2007-06-01T05:38:06
revision	4

sched_exp_time	0.0
ontime	30769.199949056
ontime4	30769.199949056
l1events	2504071

### 2.1.4 Events

	<b>ccd 4</b>
level 1 events	2504071
rejected events	172649
rejected %	6%

	<b>ccd 4</b>
grade 0 events	1680026
	67%
grade 1 events	8152
	0%
grade 2 events	326017
	13%
grade 3 events	110674
	4%
grade 4 events	109194
	4%
grade 5 events	10499
	0%
grade 6 events	105511
	4%
grade 7 events	153998
	6%

## 2.2 Compared Parameters

Parameter	Planned	Actual	Parameter	Planned	Actual
Instrument	ACIS	ACIS	Obspar format version number	6	6
Detector	ACIS-4	ACIS-4	Obspar file type	PREDICTED	ACTUAL
Grating	NONE	NONE	Obspar update status	NONE	UPDATED
Data mode	FAINT	FAINT	On-chip summing requested	N	N
Observation mode	SECONDARY	SECONDARY	Subarray requested	NONE	NONE
Pointing RA	0	52.27305884552771	Alternating exposures requested	N	N
Pointing Dec	0	31.3268698995661	Primary exposure time	0.000000	1.8
Pointing Roll	0.0	95.57652816009491			
SIM focus pos (mm)	-0.684267	-0.7809083437167272			
SIM defocus (mm)	0	0.7524282956875696			
SIM translation stage pos (mm)	-190.132523	250.466033080201			
SIM translation stage offset (mm)	0	-0.01005468664627074			
Observation start time	79900840.899	79900840.130439			
Observation start date	2000-07-13T18:40:41	2000-07-13T18:40:40			
Observation end time	79935809.8	79935809.03173099			
Observation end date	2000-07-14T04:23:30	2000-07-14T04:23:29			
Read mode	TIMED	TIMED			

**2.3 Star Slots**

**2.4 FID Slots**

# A Summary

## A.1 Status

V&V Scientist	Beth Sundheim
V&V Date (YYYY-MM-DD)	2007.06.01
V&V Edition	1
V&V Disposition and Status	OK
V&V Charge Time	30.7691999

## A.2 Comments