

V&V Reference Report

L2 ASCDS Version : 8.4.5

Observation 60708 - L2 Version 4
Chandra X-Ray Center

L2 Processing Date : Oct 29 2012

Contents

1	Front	2
2	OBI	3
2.1	OBI	3
2.1.1	Images	3
2.1.2	Bias	3
2.1.3	Parameters	4
2.1.4	Events	4
2.2	Compared Parameters	5
2.3	Star Slots	6
2.4	FID Slots	6
A	Summary	7
A.1	Status	7
A.2	Comments	7

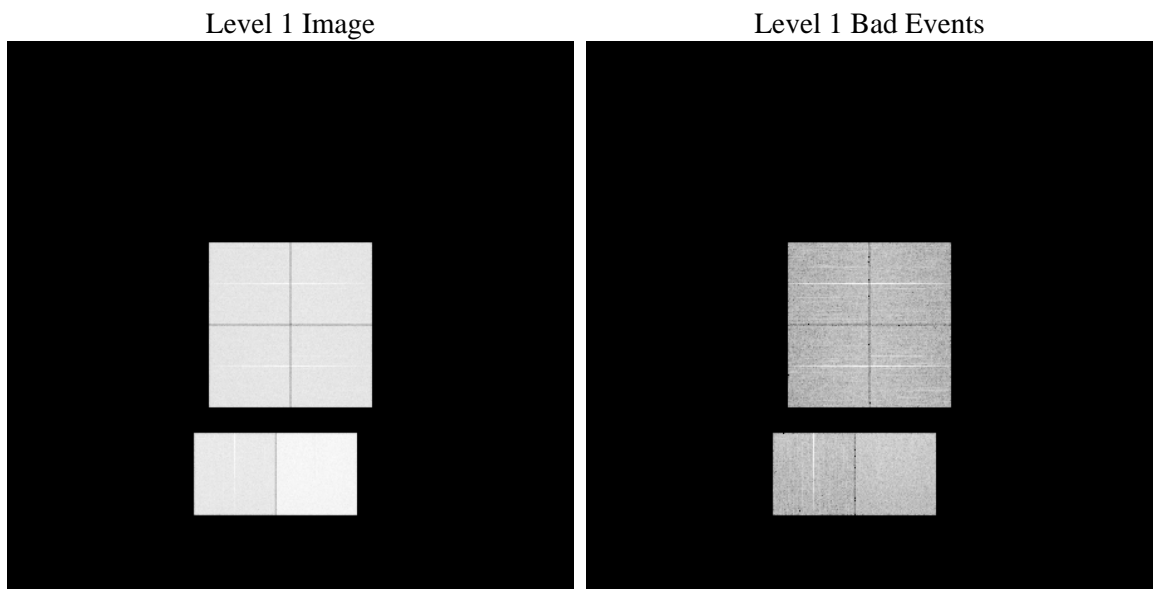
1 Front

seq_num	 	Sequence number
obs_id	60708	Observation id
title	ACIS-012367 diagnostics	Proposal title
observer	CHANDRA engineering request/realtime commanding	Principal investig
object	 	Source name
dtcycle	0	
cycle	P	events from which exps? Prim/Second/Both
ra_targ	0.0	Observer's specified target RA [deg]
dec_targ	0.0	Observer's specified target Dec [deg]
ra_nom	145.16543387655	Nominal RA [deg]
dec_nom	-11.072988929869	Nominal Dec [deg]
roll_nom	231.71552784907	Nominal Roll [deg]
revision	4	Processing version of data
ontime	15602.484391481	Sum of GTIs [s]
livetime	15404.916339428	Livetime [s]
ontime0	8994.1023589075	Sum of GTIs [s]
ontime1	9344.0872123539	Sum of GTIs [s]
ontime2	8857.7226704061	Sum of GTIs [s]
ontime3	8981.2202188075	Sum of GTIs [s]
ontime6	9739.4042211175	Sum of GTIs [s]
ontime7	15602.484391481	Sum of GTIs [s]
l2events	2344769	Number of level 2 events

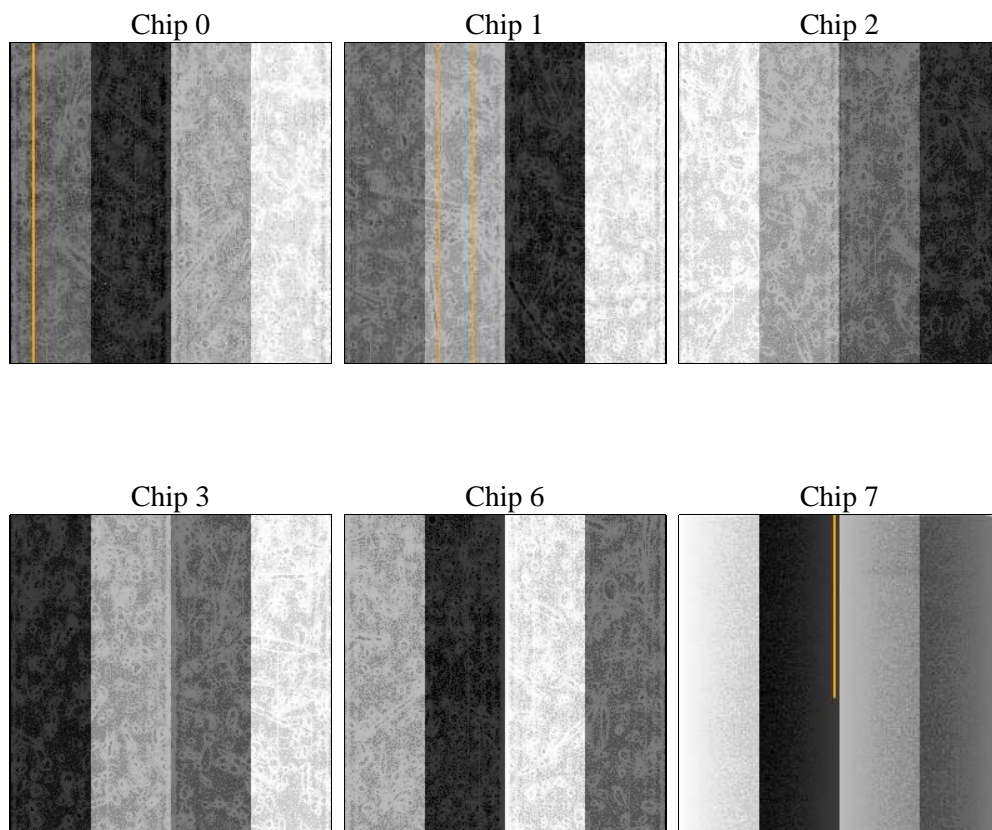
2 OBI

2.1 OBI

2.1.1 Images



2.1.2 Bias



2.1.3 Parameters

obi_num	0	Obi number	sched_exp_time	1200	[s] Scheduled observation exposure time
ascdsver	8.4.5	Processing system revision	ontime	15602.484391481	Sum of GTIs [s]
caldsver	4.5.2	 	ontime0	8994.1023589075	Sum of GTIs [s]
date	2012-10-29T10:26:21	Date and time of file creation	ontime1	9344.0872123539	Sum of GTIs [s]
revision	4	Processing version of data	ontime2	8857.7226704061	Sum of GTIs [s]
			ontime3	8981.2202188075	Sum of GTIs [s]
			ontime6	9739.4042211175	Sum of GTIs [s]
			ontime7	15602.484391481	Sum of GTIs [s]
			l1events	2854780	Number of level 1 events

2.1.4 Events

	ccd 0	ccd 1	ccd 2	ccd 3	ccd 6	ccd 7		ccd 0	ccd 1	ccd 2	ccd 3	ccd 6	ccd 7
level 1 events	407994	425258	410081	418219	465972	727256	grade 0 events	194430	203375	198165	202171	219372	163393
rejected events	60006	60755	61602	64661	67643	87106		47%	47%	48%	48%	47%	22%
rejected %	14%	14%	15%	15%	14%	11%	grade 1 events	1080	900	1098	1132	959	403
								0%	0%	0%	0%	0%	0%
							grade 2 events	61196	65122	60026	61310	69535	143179
								14%	15%	14%	14%	14%	19%
							grade 3 events	22804	23519	22948	23405	25372	65553
								5%	5%	5%	5%	5%	9%
							grade 4 events	22881	23546	22712	23057	25190	64598
								5%	5%	5%	5%	5%	8%
							grade 5 events	3877	4122	3845	4043	4619	15146
								0%	0%	0%	0%	0%	2%
							grade 6 events	51315	53728	49290	48586	64102	211946
								12%	12%	12%	11%	13%	29%
							grade 7 events	50411	50946	51997	54515	56823	63038
								12%	11%	12%	13%	12%	8%

2.2 Compared Parameters

Parameter	Planned	Actual
Instrument	ACIS	ACIS
Detector	ACIS-012367	ACIS-012367
Grating	NONE	NONE
Data mode	FAINT	FAINT
Observation mode	SECONDARY	SECONDARY
[deg] Pointing RA	145.1654380292098	145.1654338765518
[deg] Pointing Dec	-11.07298329460687	-11.07298892986902
[deg] Pointing Roll	231.715529356156	231.7155278490741
[mm] SIM focus pos	-0.68282252473119	-0.68282252473119
[mm] SIM defocus	0.8505140384245534	0.8505140384245534
[mm] SIM translation stage pos	250.4660330802	250.4660330802
[mm] SIM translation stage offset	-0.01005726120527584	-0.01005726120527584
[s] Observation start time (MET)	171557669.123066	171557669.123066
Observation start date	2003-06-09T15:26:00	2003-06-09T14:54:29
[s] Observation end time (MET)	171575007.426601	171575007.426601
Observation end date	2003-06-09T15:46:00	2003-06-09T19:43:27
Read mode	TIMED	TIMED

Parameter	Planned	Actual
Obspar format version number	7	7
Obspar file type	PREDICTED	ACTUAL
Obspar update status	OVERRIDE	OVERRIDE
Number of optional ACIS chips dropped	0	0
On-chip summing requested	N	N
Subarray requested	NONE	NONE
Alternating exposures requested	N	N
[s] Primary exposure time	3.2	3.2

2.3 Star Slots

2.4 FID Slots

A Summary

A.1 Status

V&V Scientist	Jen Lauer
V&V Date (YYYY-MM-DD)	2012.12.06
V&V Edition	1
V&V Disposition and Status	OK
V&V Charge Time	15.602484391481

A.2 Comments