

V&V Reference Report

L2 ASCDS Version : 7.6.7.1

Observation 60009 - L2 Version 001
Chandra X-Ray Center

L2 Processing Date : Apr 15 2006

Contents

1	Front	2
2	OBI	3
2.1	OBI	3
2.1.1	Images	3
2.1.2	Bias	3
2.1.3	Parameters	4
2.1.4	Events	4
2.2	Compared Parameters	5
2.3	Aspect	6
2.4	Star Slots	8
2.5	FID Slots	8
A	Summary	9
A.1	Status	9
A.2	Comments	9

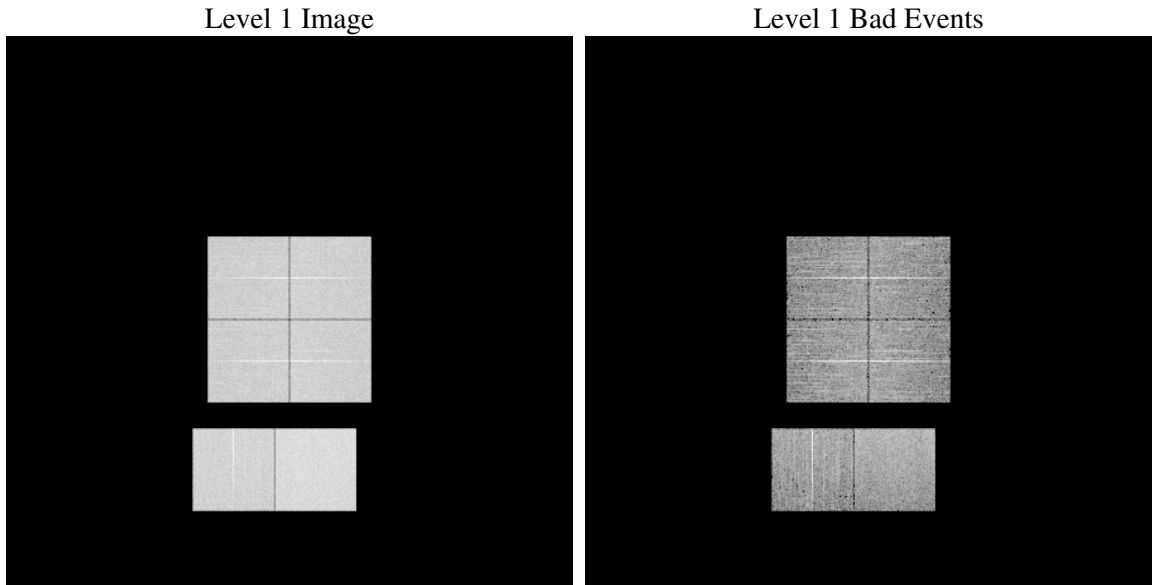
1 Front

seq_num	
obs_id	60009
title	ACIS-012367 diagnostics
observer	CHANDRA engineering request/realtime commanding
object	
dtcycle	0
cycle	P
ra_targ	0.0
dec_targ	0.0
ra_nom	336.00181278273
dec_nom	4.9794411056974
roll_nom	274.98557395355
revision	2
ontime	7798.3999709487
livetime	7699.6519348838
ontime0	6181.1497678459
ontime1	6382.0906257927
ontime2	6006.1369214952
ontime3	6203.8652795553
ontime6	6595.9958437383
ontime7	7798.3999709487
l2events	1057840

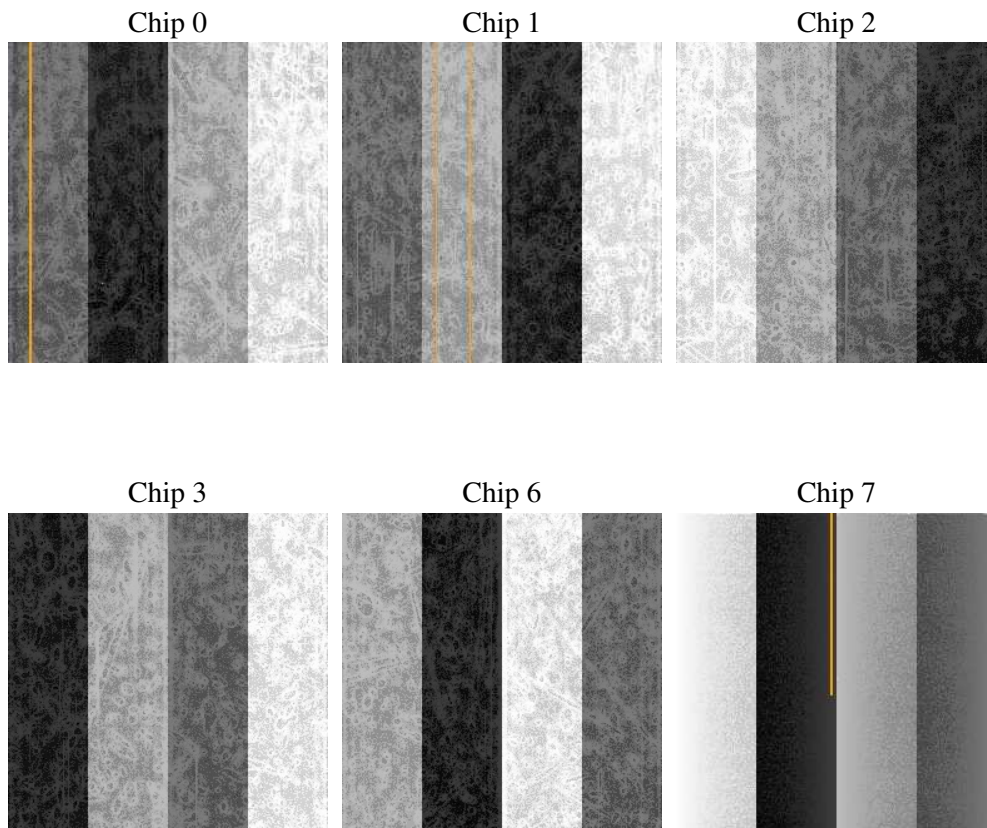
2 OBI

2.1 OBI

2.1.1 Images



2.1.2 Bias



2.1.3 Parameters

obi_num	0
ascdsver	7.6.7.1
caldbver	3.2.1
date	2006-04-15T14:32:57
revision	2

sched_exp_time	0.0
ontime	7801.1109386384
ontime0	6183.8607355356
ontime1	6384.8015934825
ontime2	6008.847889185
ontime3	6206.5478258729
ontime6	6598.7068114281
ontime7	7801.1109386384
l1events	1412958

2.1.4 Events

	ccd 0	ccd 1	ccd 2	ccd 3	ccd 6	ccd 7
level 1 events	216727	222543	216816	221582	243403	291887
rejected events	46099	45922	49668	48510	52160	59883
rejected %	21%	20%	22%	21%	21%	20%

	ccd 0	ccd 1	ccd 2	ccd 3	ccd 6	ccd 7
grade 0 events	93887	96717	93336	97055	103701	40149
	43%	43%	43%	43%	42%	13%
grade 1 events	533	512	611	609	540	105
	0%	0%	0%	0%	0%	0%
grade 2 events	29895	31678	28140	29469	33444	69548
	13%	14%	12%	13%	13%	23%
grade 3 events	11132	11187	11200	11373	11858	16811
	5%	5%	5%	5%	4%	5%
grade 4 events	11158	11190	10976	11452	11682	16432
	5%	5%	5%	5%	4%	5%
grade 5 events	2920	2971	2696	3110	3343	7088
	1%	1%	1%	1%	1%	2%
grade 6 events	24641	25926	23598	23810	30652	89149
	11%	11%	10%	10%	12%	30%
grade 7 events	42561	42362	46259	44704	48183	52605
	19%	19%	21%	20%	19%	18%

2.2 Compared Parameters

Parameter	Planned	Actual	Parameter	Planned	Actual
Instrument	ACIS	ACIS	Obspar format version number	6	6
Detector	ACIS-012367	ACIS-012367	Obspar file type	PREDICTED	ACTUAL
Grating	NONE	NONE	Obspar update status	NONE	UPDATED
Data mode	FAINT	FAINT	On-chip summing requested	N	N
Observation mode	SECONDARY	SECONDARY	Subarray requested	NONE	NONE
Pointing RA	0	336.0018127827276	Alternating exposures requested	N	N
Pointing Dec	0	4.979441105697369	Primary exposure time	3.2	3.2
Pointing Roll	0.0	274.9855739535525			
SIM focus pos (mm)	-0.782348	-0.6828225247311905			
SIM defocus (mm)	0	0.8505141146731063			
SIM translation stage pos (mm)	-233.592463	250.4635187648994			
SIM translation stage offset (mm)	0	-0.007540371344731511			
Observation start time	213829232.668386	213829231.64341			
Observation start date	2004-10-10T21:00:33	2004-10-10T21:00:31			
Observation end time	213850189.819321	213850188.79435			
Observation end date	2004-10-11T02:49:50	2004-10-11T02:49:48			
Read mode	TIMED	TIMED			

2.3 Aspect

2.4 Star Slots

2.5 FID Slots

A Summary

A.1 Status

V&V Scientist	Beth Sundheim
V&V Date (YYYY-MM-DD)	2006.04.16
V&V Edition	1
V&V Disposition and Status	OK
V&V Charge Time	7.79839997

A.2 Comments