

V&V Reference Report

L2 ASCDS Version : 8.1.1

Observation 4 - L2 Version 4
Chandra X-Ray Center

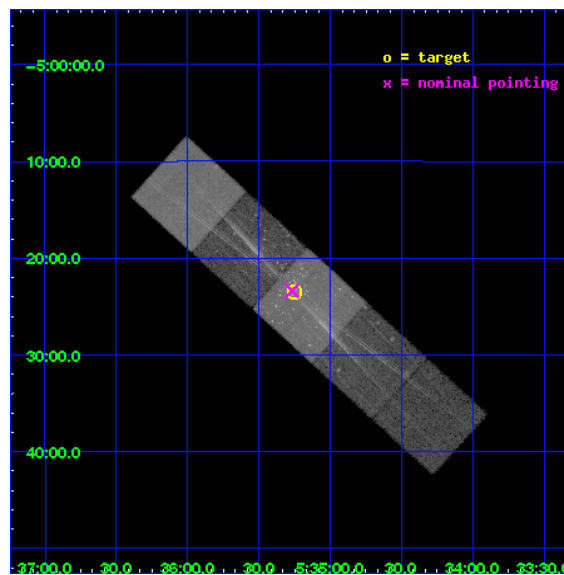
L2 Processing Date : Nov 24 2009

Contents

1	Front	2
2	OBI	3
2.1	OBI	3
2.1.1	Images	3
2.1.2	Bias	3
2.1.3	Parameters	4
2.1.4	Events	4
2.2	Compared Parameters	5
2.3	Aspect	6
2.4	Star Slots	9
2.4.1	Slot 3	9
2.4.2	Slot 4	10
2.4.3	Slot 5	11
2.4.4	Slot 6	12
2.4.5	Slot 7	13
2.5	FID Slots	14
2.5.1	Slot 0	14
2.5.2	Slot 1	15
2.5.3	Slot 2	16
3	Gratings	17
3.1	HEG Arm	17
3.2	MEG Arm	19
A	Summary	21
A.1	Status	21
A.2	Comments	21

1 Front

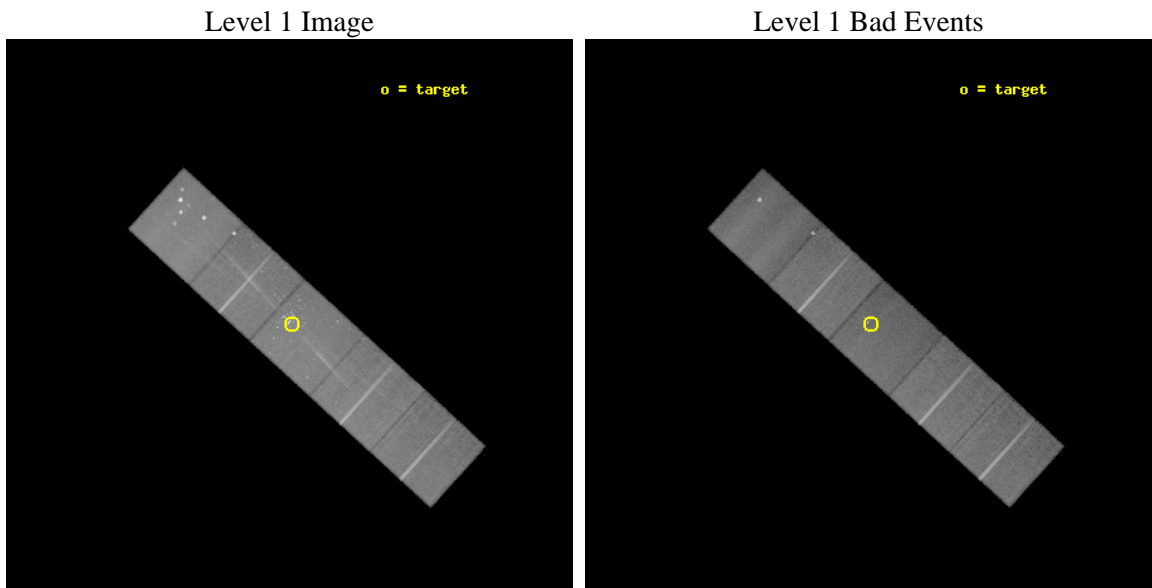
seq_num	200002	Sequence number
obs_id	4	Observation id
title	STELLAR CORONAL SPECTROSCOPY OF STAR-FORMING REGIONS: ORION	Propos
observer	Prof. Claude Canizares	Principal investigator
object	TRAPEZIUM	Source name
dtcycle	0	
cycle	P	events from which exps? Prim/Second/Both
ra_targ	83.8125	Observer's specified target RA
dec_targ	-5.391472	Observer's specified target Dec
ra_nom	83.817188789629	Nominal RA
dec_nom	-5.3898139935195	Nominal Dec
roll_nom	42.308424859957	Nominal Roll
revision	4	Processing version of data
ontime	31308.759058945	Sum of GTIs [s]
livetime	30912.308699869	Livetime [s]
ontime5	31311.964816608	Sum of GTIs [s]
ontime6	31308.682766534	Sum of GTIs [s]
ontime7	31308.759058945	Sum of GTIs [s]
ontime8	31311.882736608	Sum of GTIs [s]
ontime9	31311.841696613	Sum of GTIs [s]
l2events	422890	Number of level 2 events



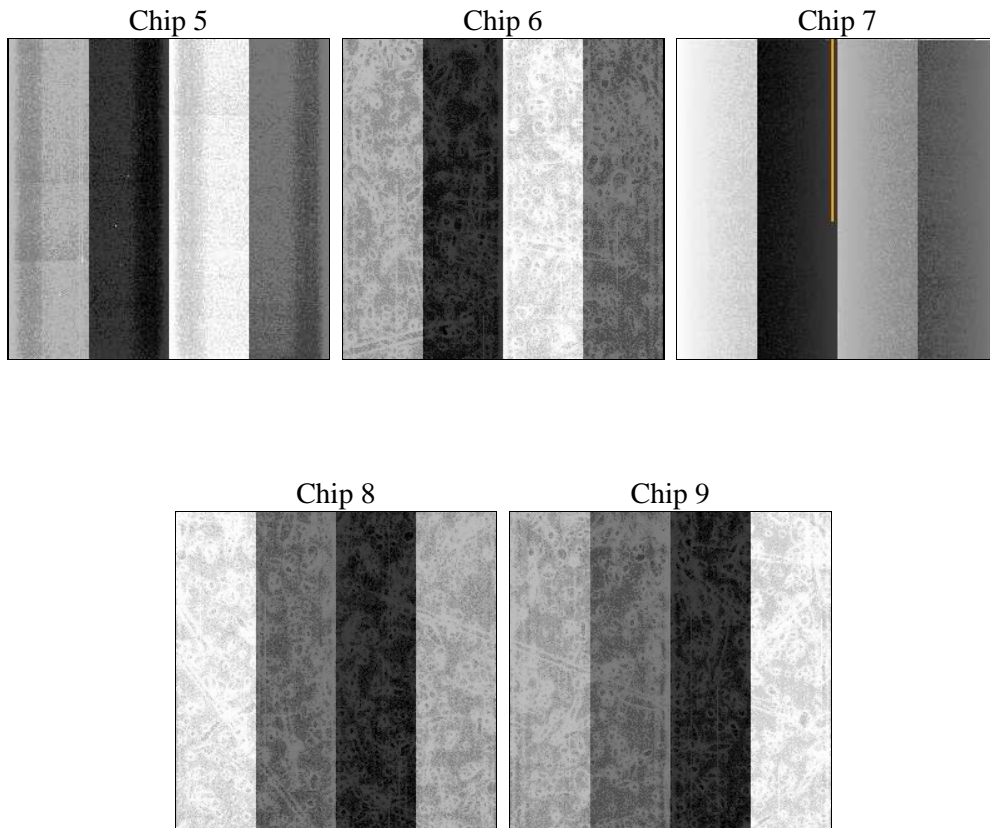
2 OBI

2.1 OBI

2.1.1 Images



2.1.2 Bias



2.1.3 Parameters

obi_num	0	Obi number	sched_exp_time	32145.607000	Scheduled observation exposure time
ascdsver	8.1.1	ASCDS version number	ontime	31308.759058945	Sum of GTIs [s]
caldbver	4.1.4	 	ontime5	31311.964816608	Sum of GTIs [s]
date	2009-11-24T15:26:32	Date and time of file creation	ontime6	31308.682766534	Sum of GTIs [s]
revision	4	Processing version of data	ontime7	31308.759058945	Sum of GTIs [s]
			ontime8	31311.882736608	Sum of GTIs [s]
			ontime9	31311.841696613	Sum of GTIs [s]
			l1events	1617977	Number of level 1 events

2.1.4 Events

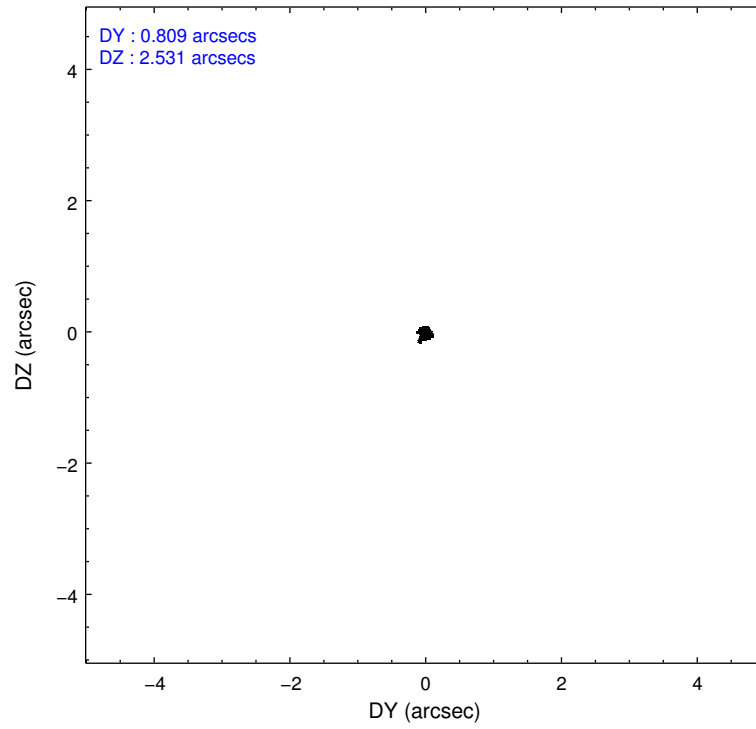
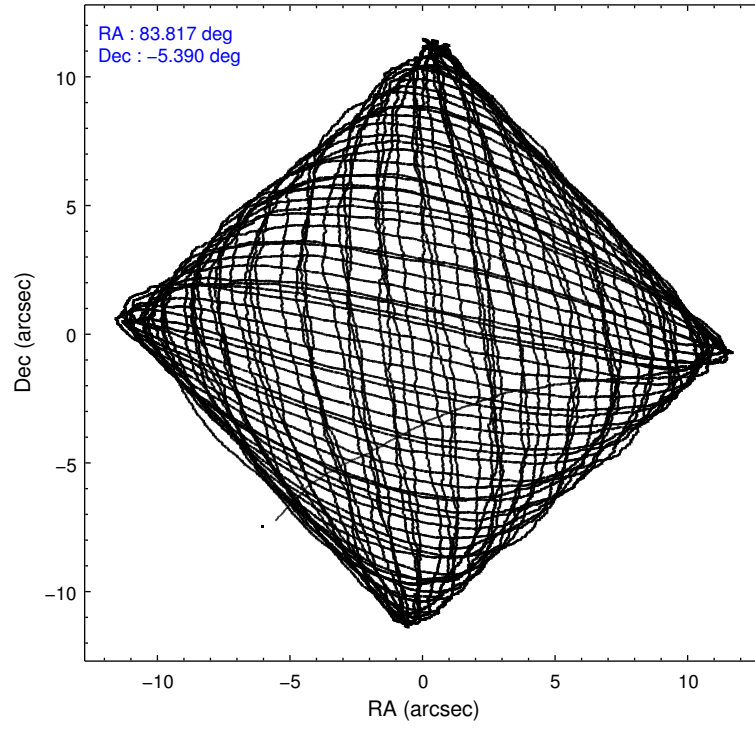
	ccd 5	ccd 6	ccd 7	ccd 8	ccd 9
level 1 events	369515	305860	348734	330302	263566
rejected events	198362	248859	180071	260285	233428
rejected %	53%	81%	51%	78%	88%

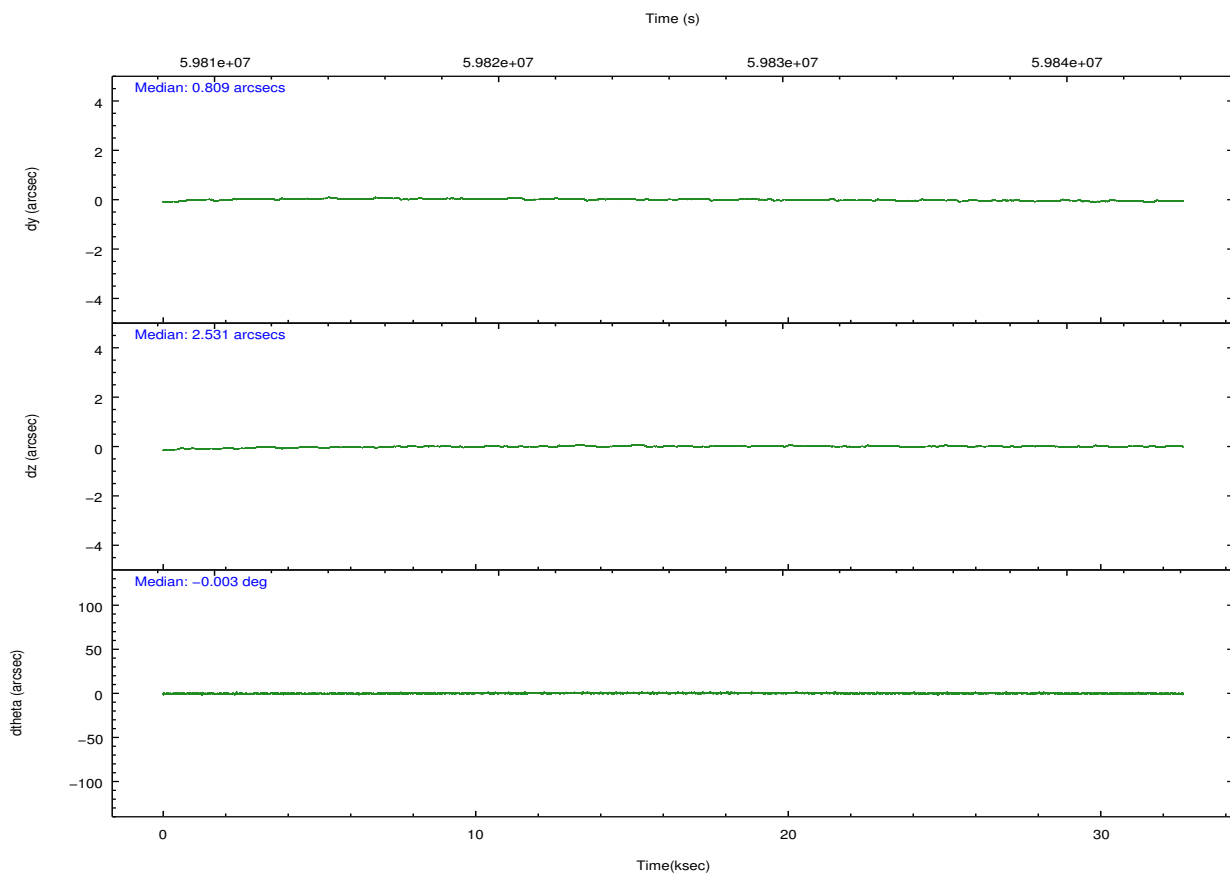
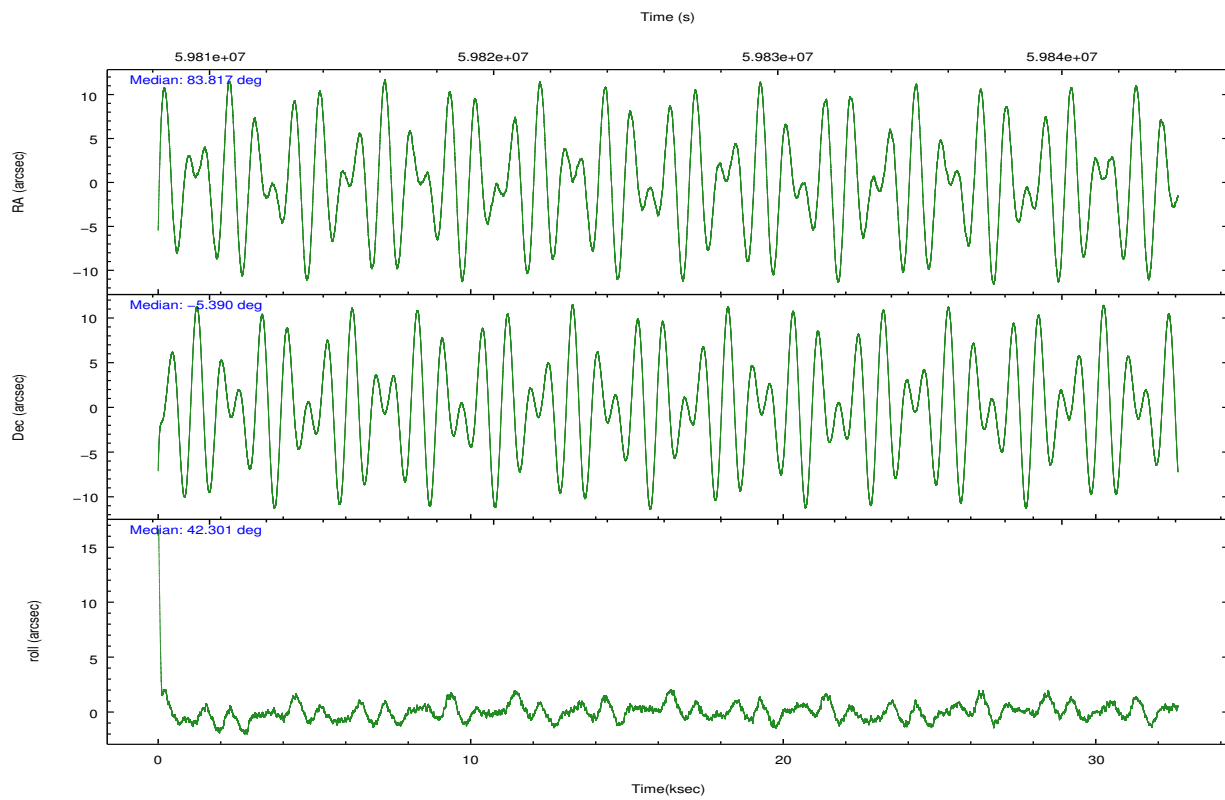
	ccd 5	ccd 6	ccd 7	ccd 8	ccd 9
grade 0 events	34854	23812	17552	24891	8134
	9%	7%	5%	7%	3%
grade 1 events	2589	96	251	145	70
	0%	0%	0%	0%	0%
grade 2 events	39313	19706	39182	20071	11294
	10%	6%	11%	6%	4%
grade 3 events	5561	2476	12725	4819	1732
	1%	0%	3%	1%	0%
grade 4 events	4886	2363	11997	4471	1683
	1%	0%	3%	1%	0%
grade 5 events	15244	5832	18335	7555	5716
	4%	1%	5%	2%	2%
grade 6 events	86590	8656	87238	15781	7302
	23%	2%	25%	4%	2%
grade 7 events	180478	242919	161454	252569	227635
	48%	79%	46%	76%	86%

2.2 Compared Parameters

Parameter	Planned	Actual	Parameter	Planned	Actual
Instrument	ACIS	ACIS	Obspar format version number	6	6
Detector	ACIS-56789	ACIS-56789	Obspar file type	PREDICTED	ACTUAL
Grating	HETG	HETG	Obspar update status	NONE	UPDATED
Data mode	FAINT	FAINT	Number of optional ACIS chips dropped	0	0
Observation mode	POINTING	POINTING	On-chip summing requested	N	N
Pointing RA	83.808665	83.81718878962931	Subarray requested	NONE	NONE
Pointing Dec	-5.416056	-5.389813993519455	Alternating exposures requested	N	N
Pointing Roll	42.150990	42.30842485995671	Primary exposure time	0.000000	3.2
SIM focus pos (mm)	-0.684267	-0.6828225247311905			
SIM defocus (mm)	0	0.001444936568705701			
SIM translation stage pos (mm)	-190.132523	-190.145094680475			
SIM translation stage offset (mm)	0	0.01257209746719923			
Observation start time	59810306.184000	59809074.804785			
Observation start date	1999-11-24T05:57:22	1999-11-24T05:37:54			
Observation end time	59842452.184000	59843319.543523			
Observation end date	1999-11-24T14:53:08	1999-11-24T15:08:39			
Read mode	TIMED	TIMED			

2.3 Aspect



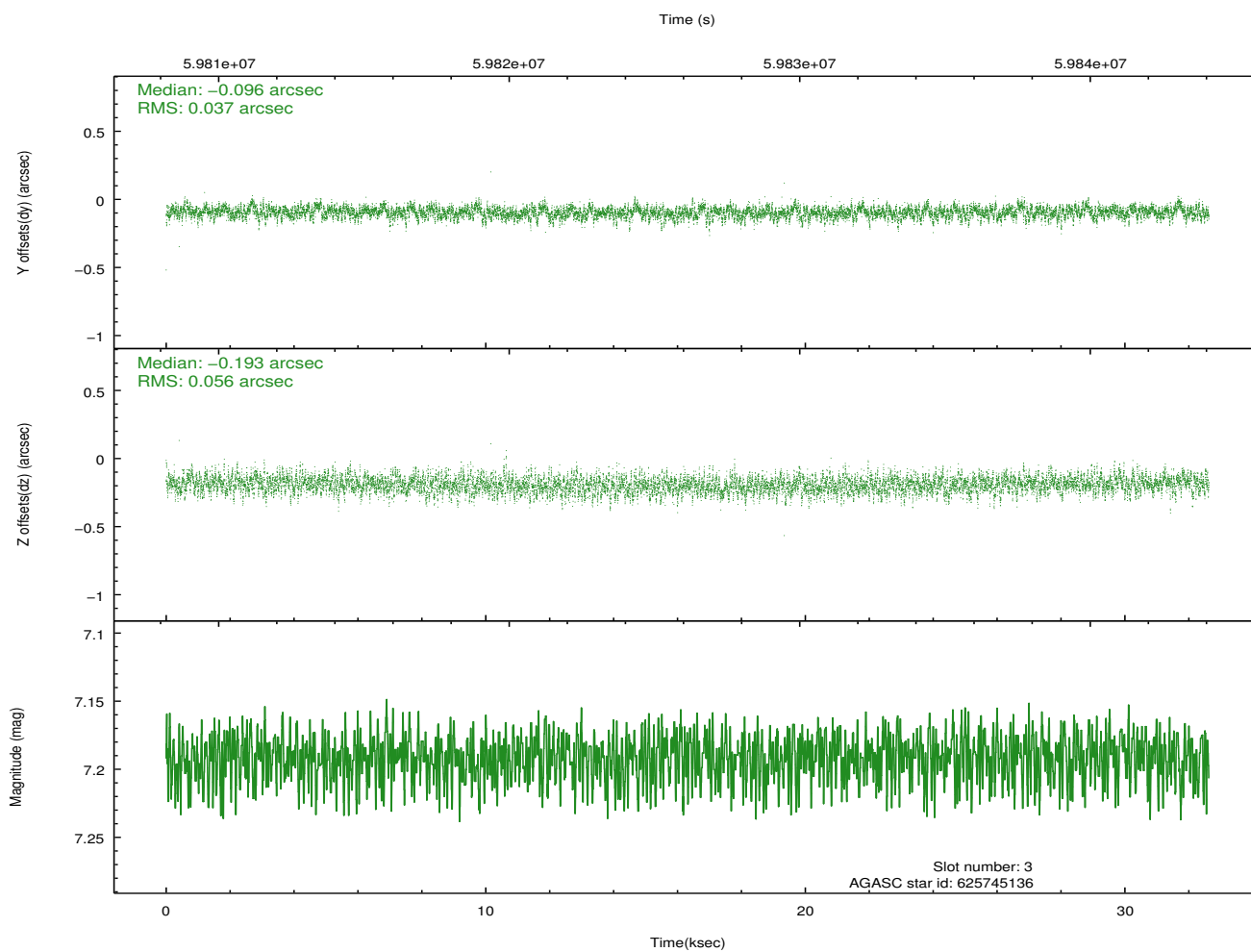
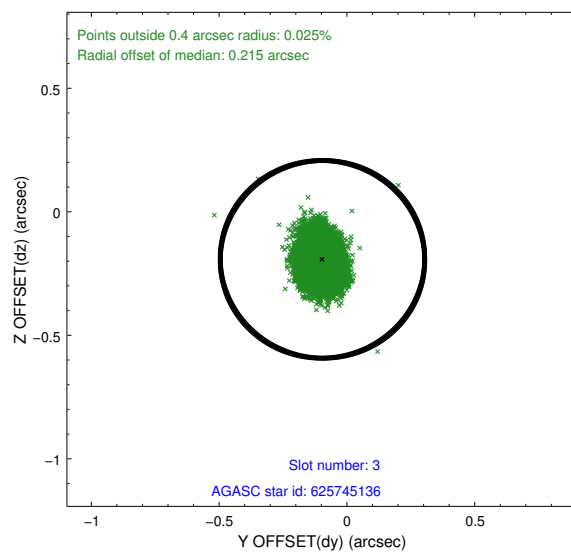
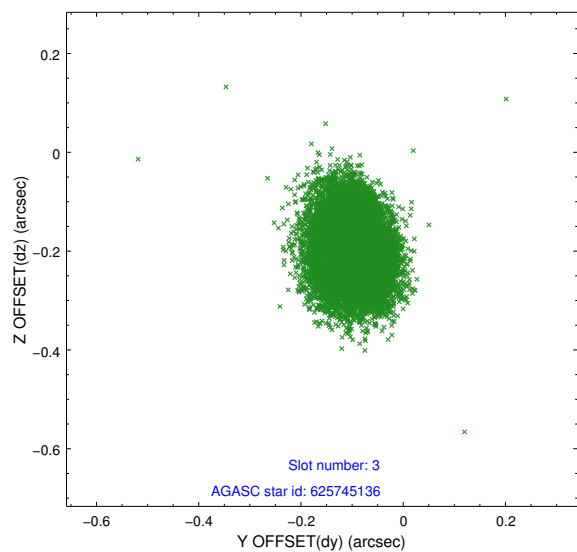


Slot Statistics

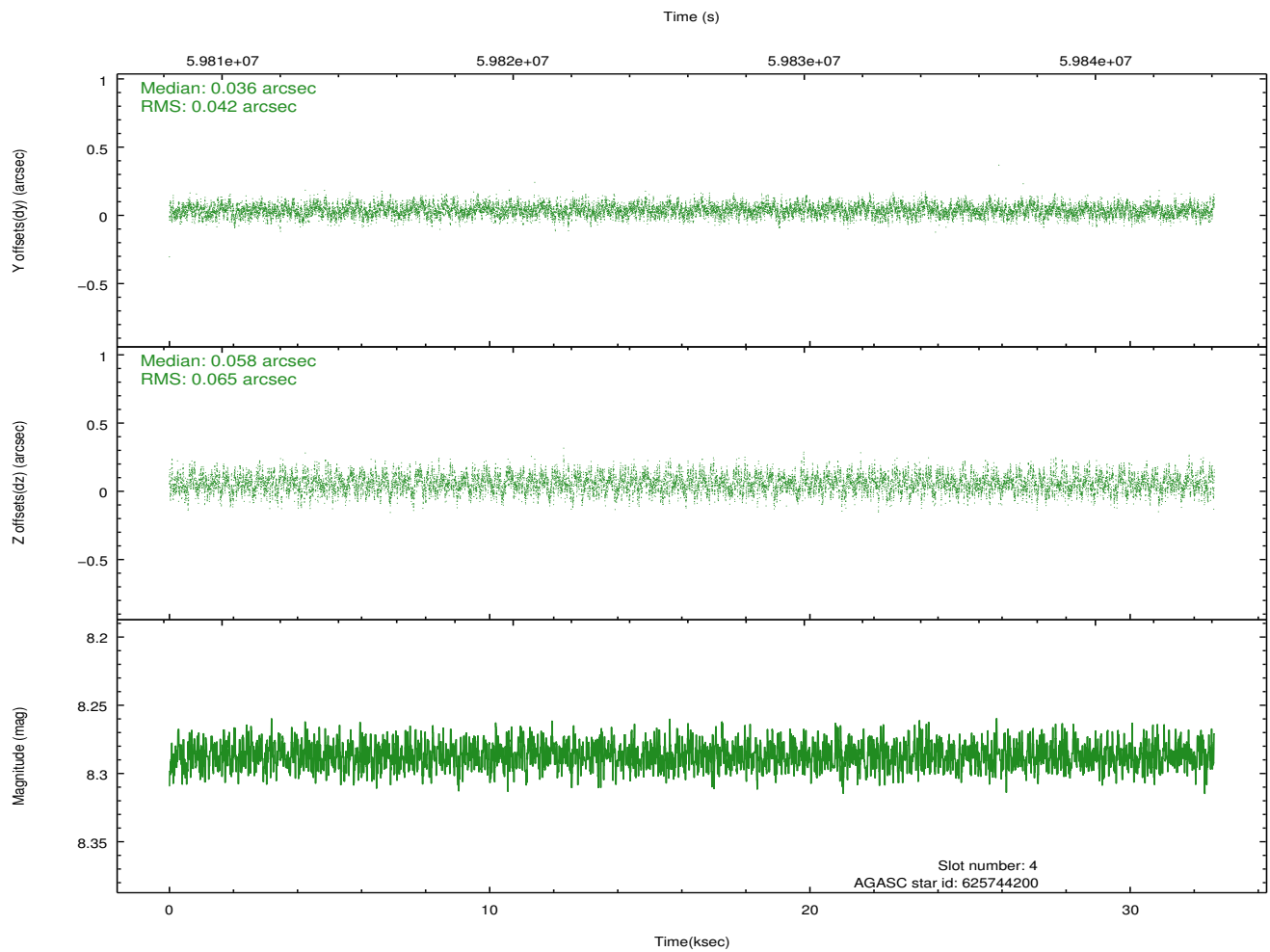
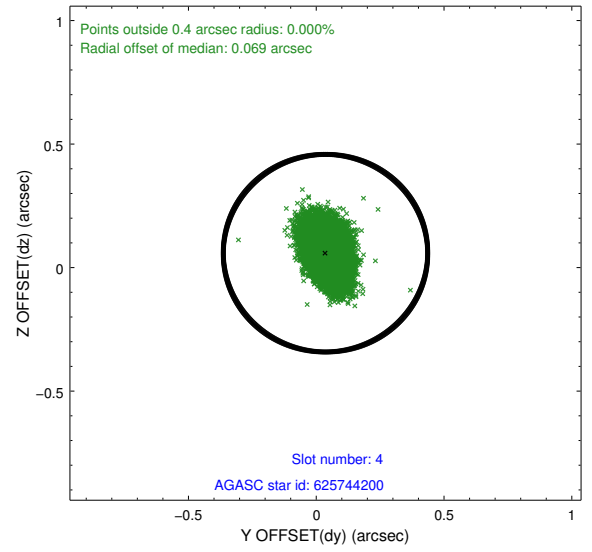
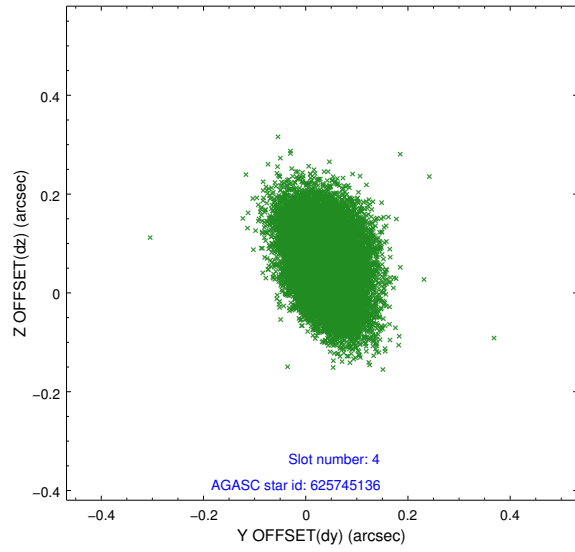
slot	status	id	mag	n_pts	med_dy	med_dz	dr1	dr2	ra	dec	mean_y	mean_z
0	FID	ACIS-S-1	7.20	15917	0.036	-0.070	0.011	0.018	0.000000	0.000000	942.61	-1719.20
1	FID	ACIS-S-5	7.25	15916	-0.055	0.022	0.011	0.018	0.000000	0.000000	-1806.42	178.62
2	FID	ACIS-S-6	7.36	15915	-0.002	0.060	0.011	0.018	0.000000	0.000000	408.29	822.46
3	GUIDE	625745136	7.19	15916	-0.096	-0.193	0.070	0.120	83.600341	-4.804339	923.34	2133.71
4	GUIDE	625744200	8.29	15916	0.036	0.058	0.082	0.136	83.695760	-5.570729	-673.53	-141.58
5	GUIDE	625741512	9.03	15904	0.095	-0.002	0.091	0.150	83.281151	-5.340585	-1220.20	1469.25
6	GUIDE	625872016	10.08	15831	-0.018	0.116	0.131	0.218	84.560440	-5.420362	1986.11	-1820.74
7	GUIDE	626272904	9.78	15904	-0.013	0.023	0.113	0.186	83.894968	-6.083561	-1383.31	-1989.52

2.4 Star Slots

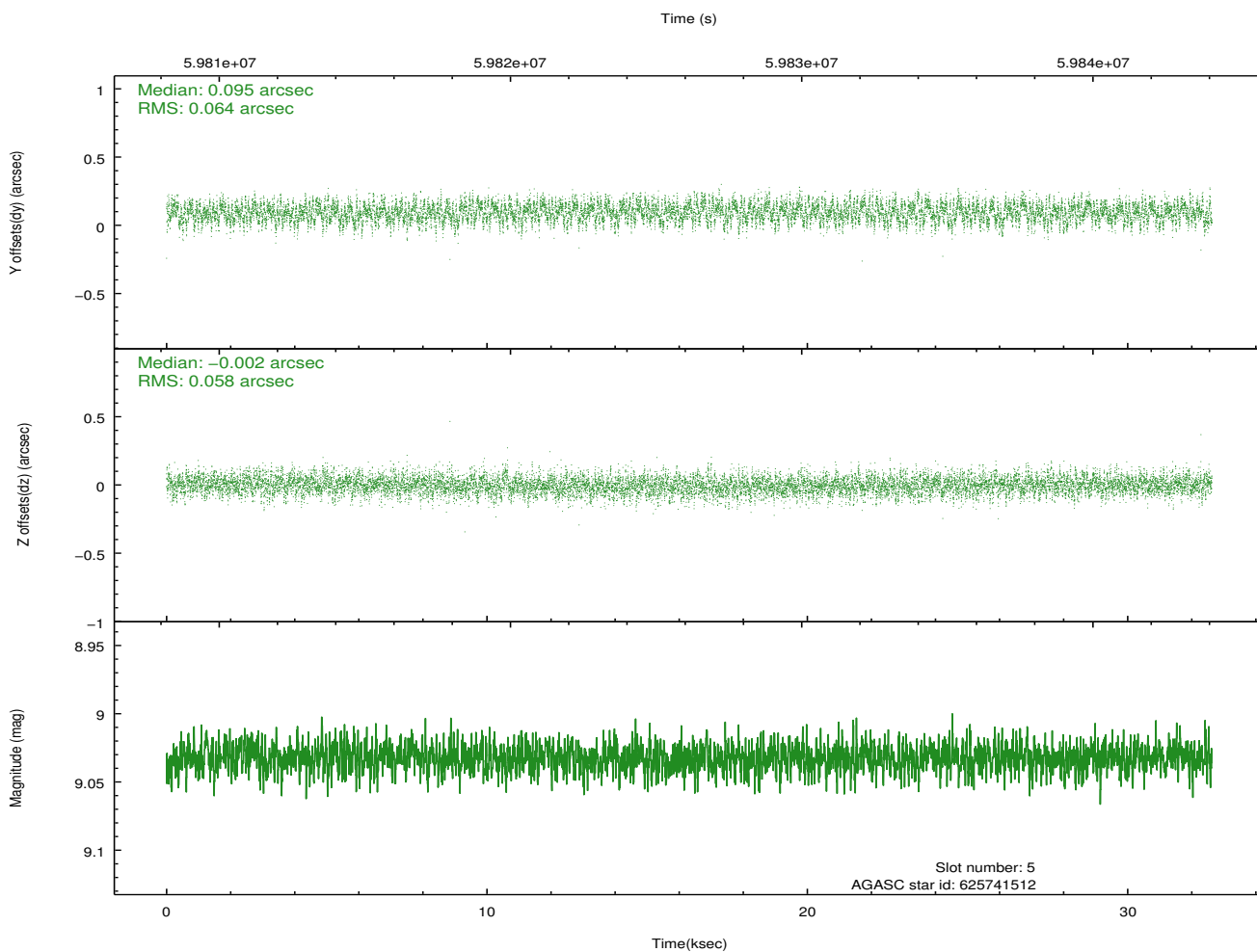
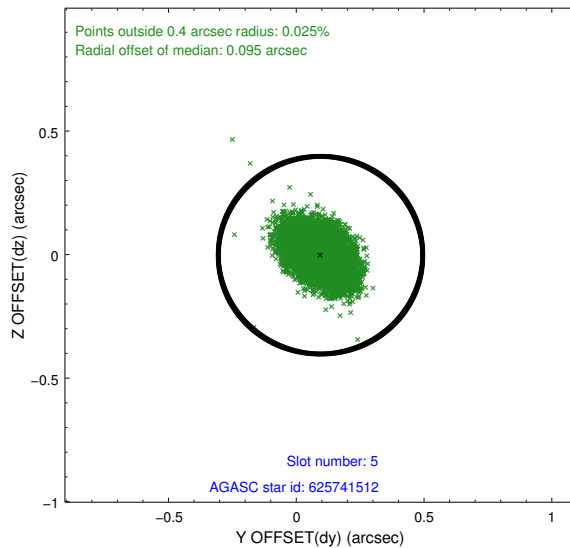
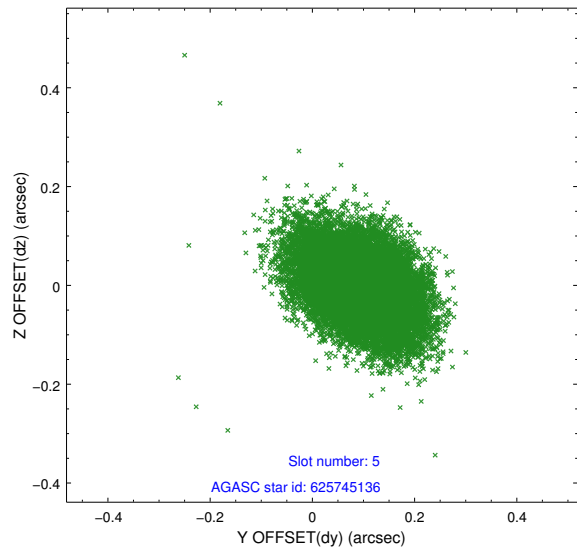
2.4.1 Slot 3



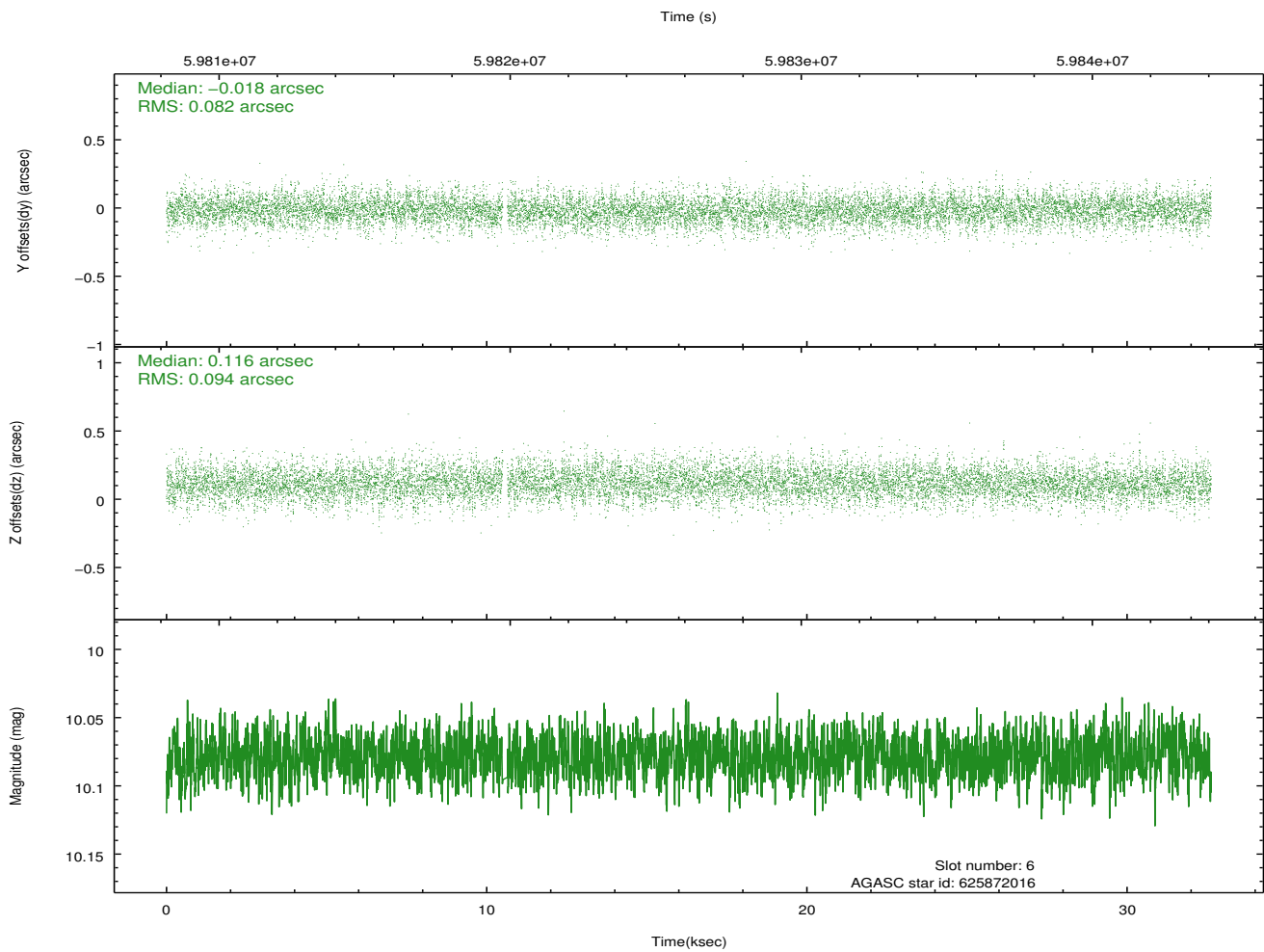
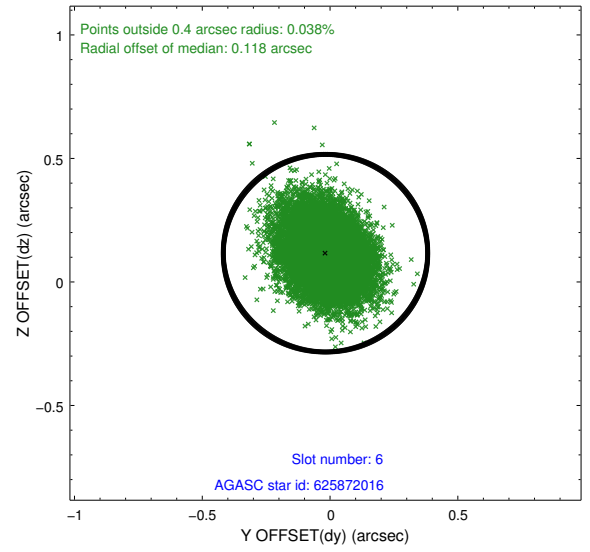
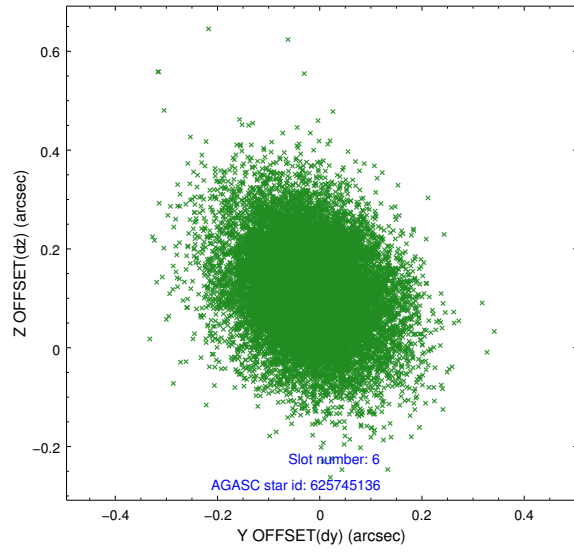
2.4.2 Slot 4



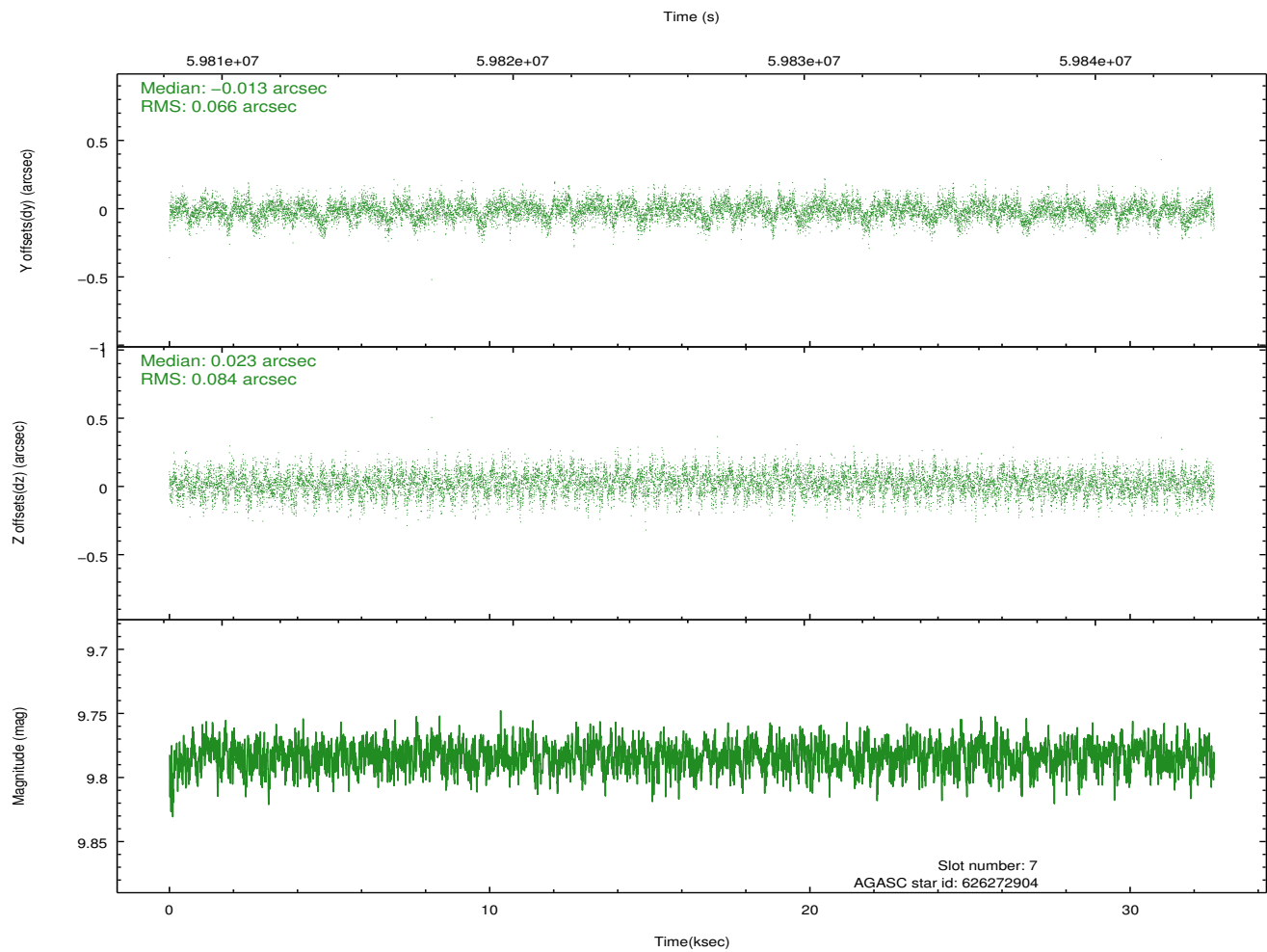
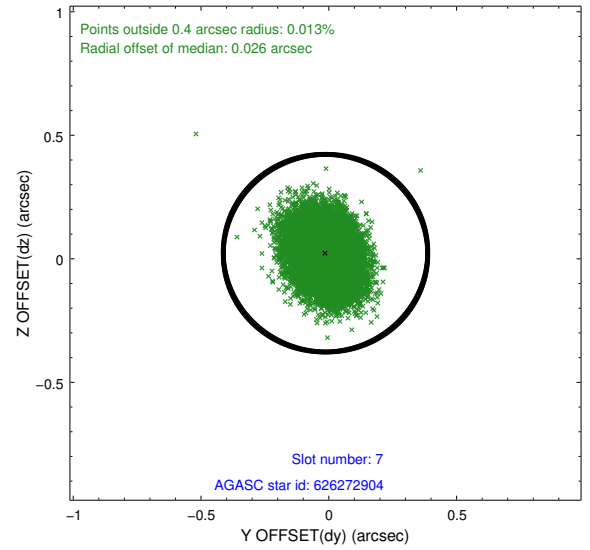
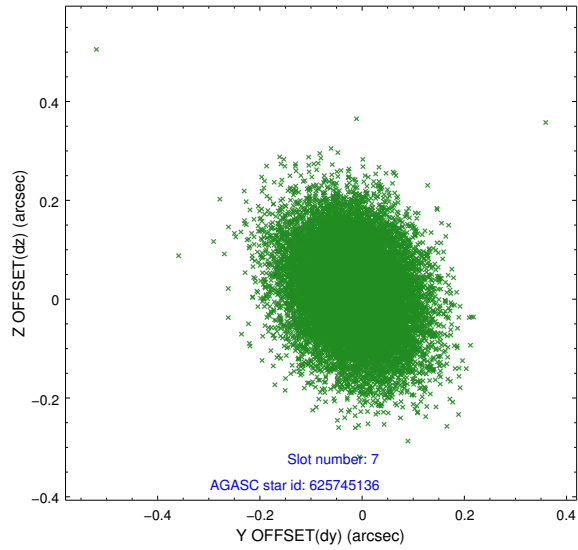
2.4.3 Slot 5



2.4.4 Slot 6

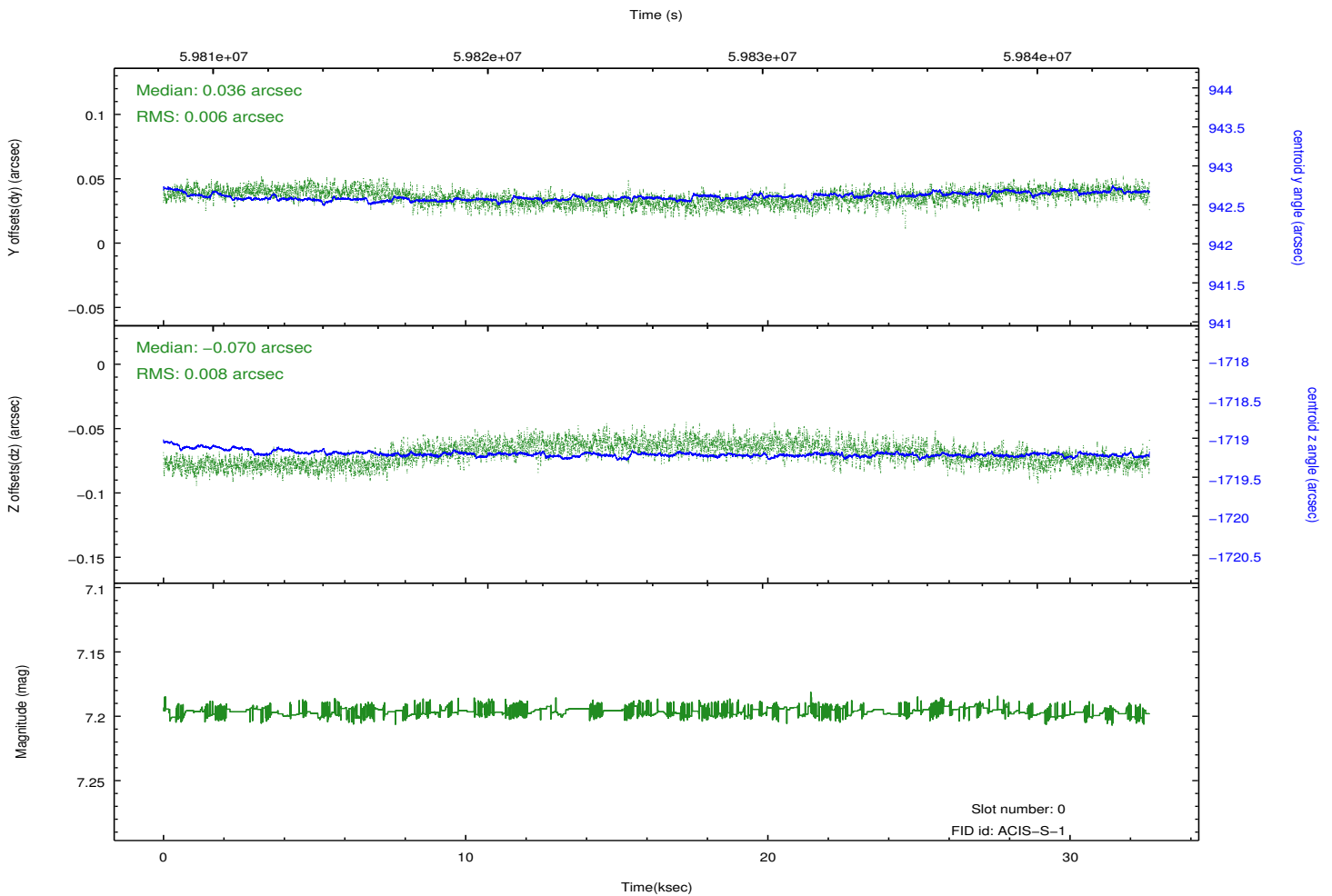
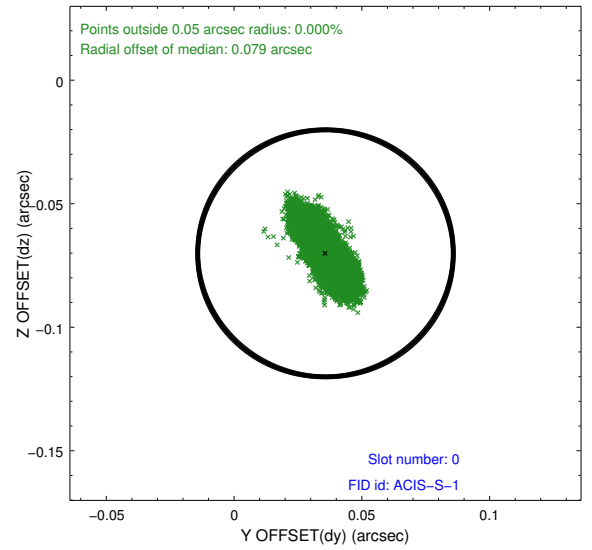
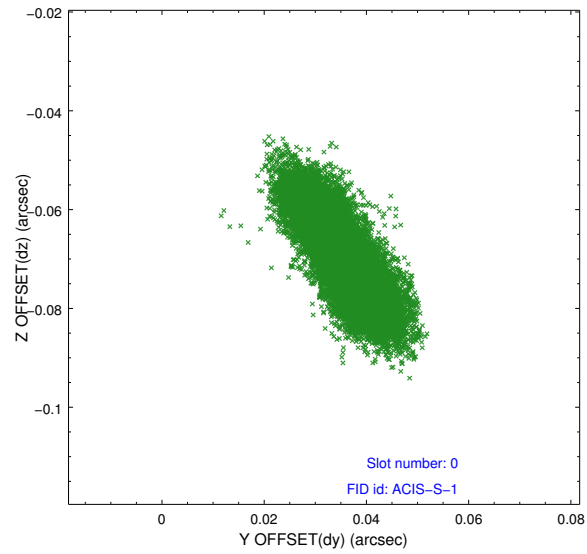


2.4.5 Slot 7

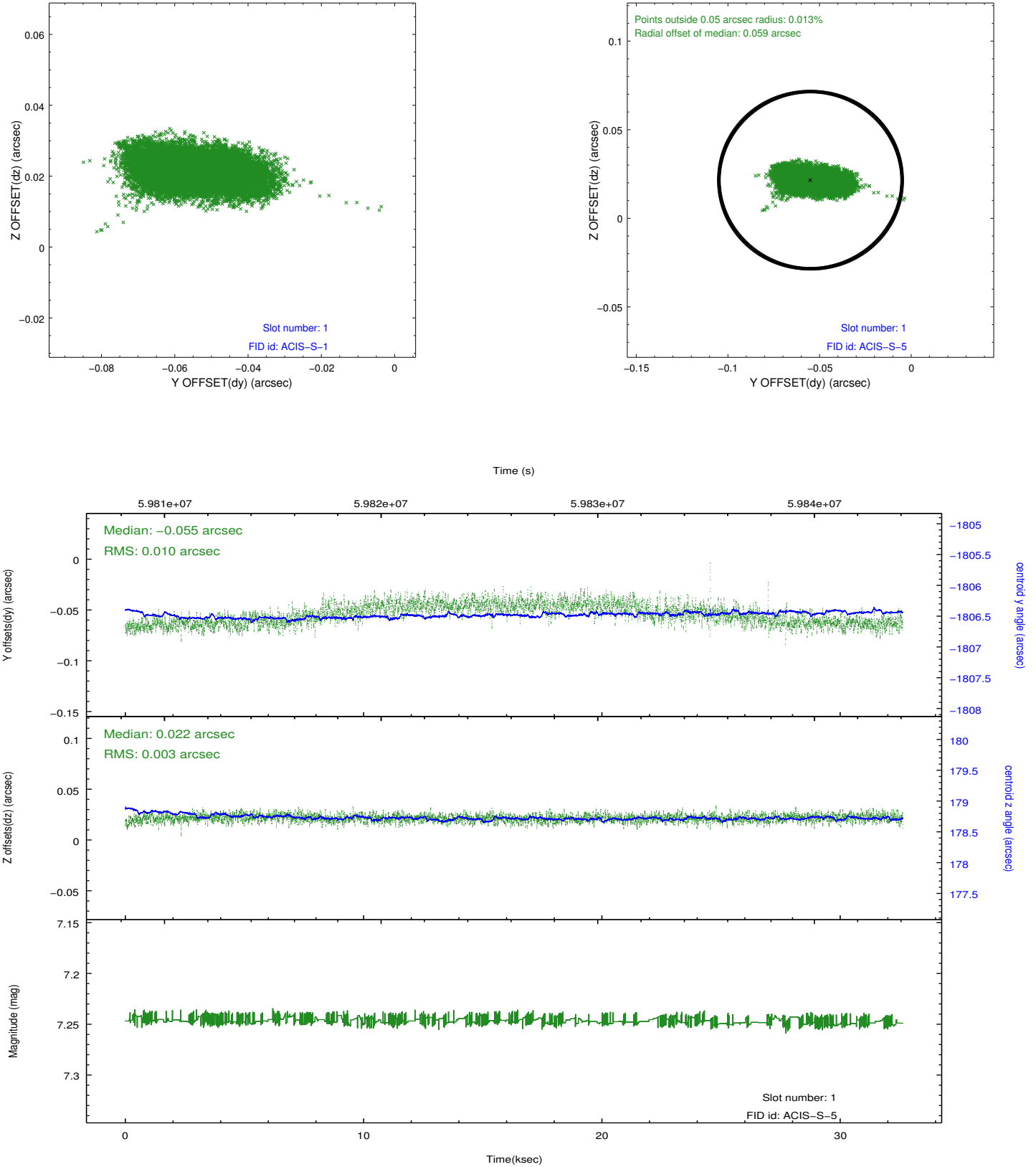


2.5 FID Slots

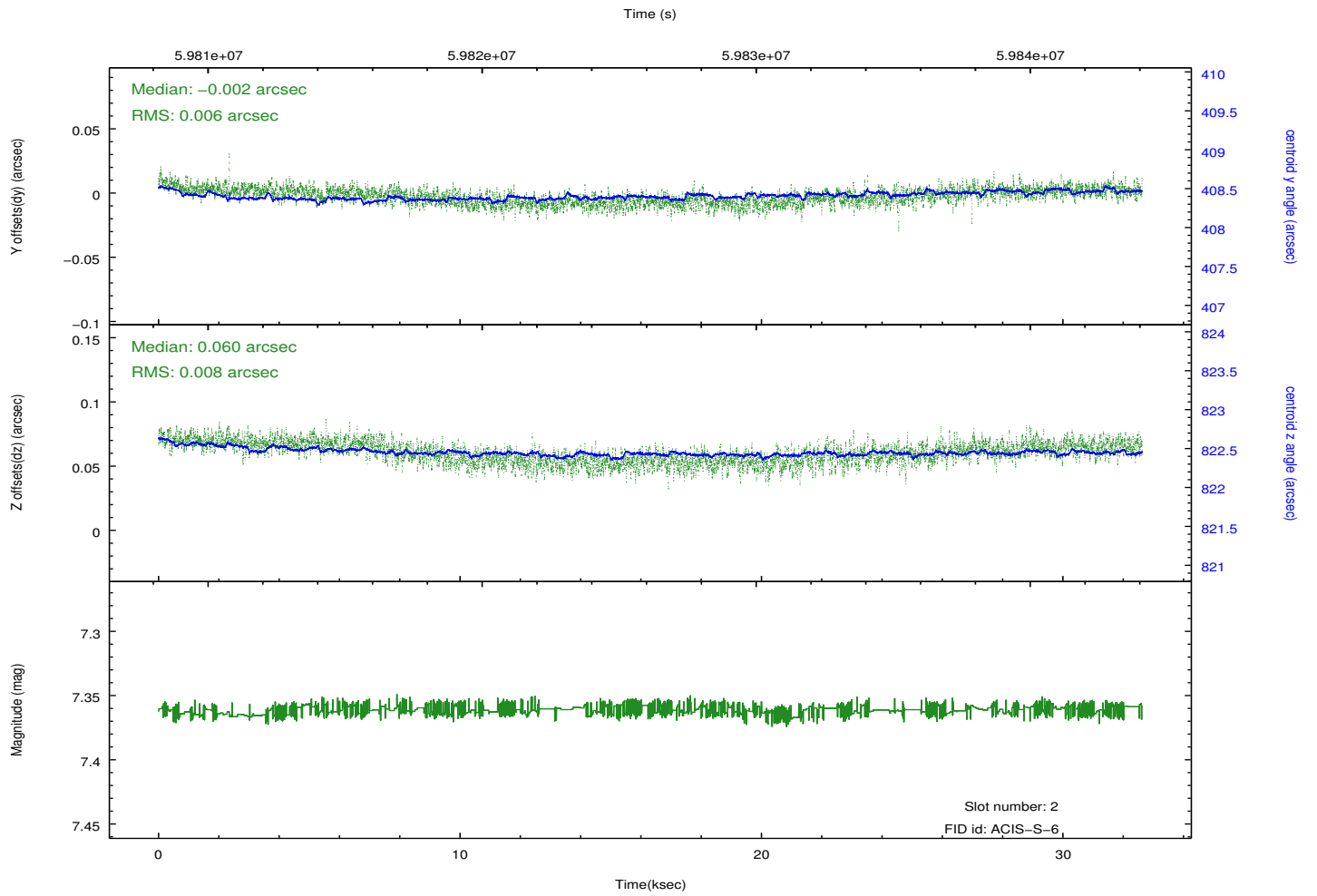
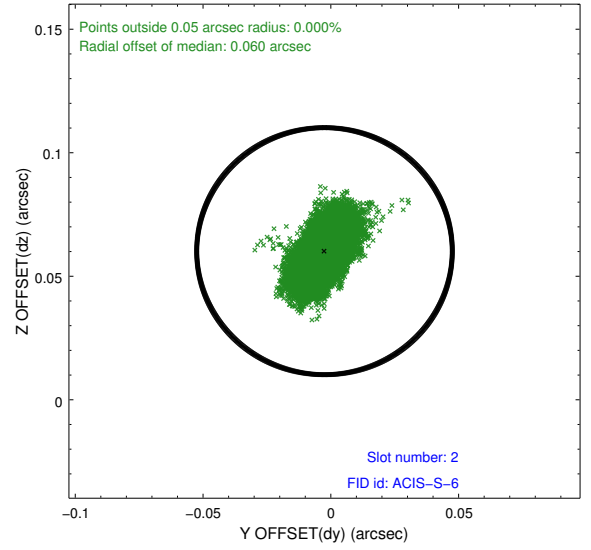
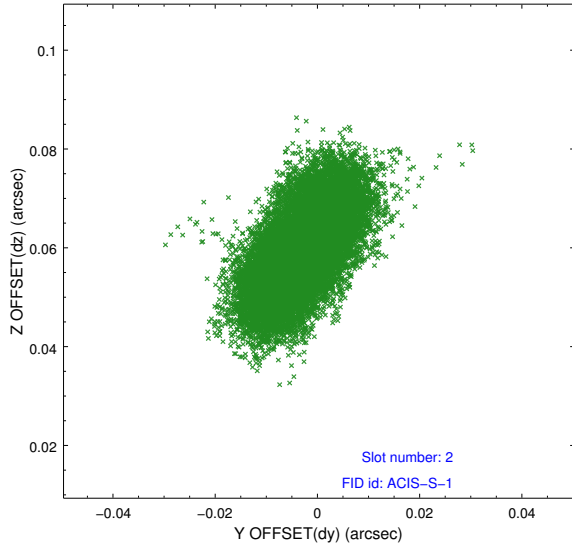
2.5.1 Slot 0



2.5.2 Slot 1

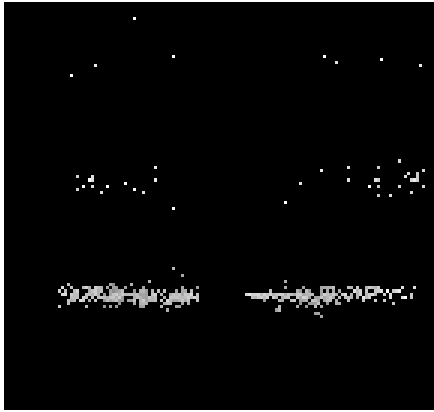


2.5.3 Slot 2

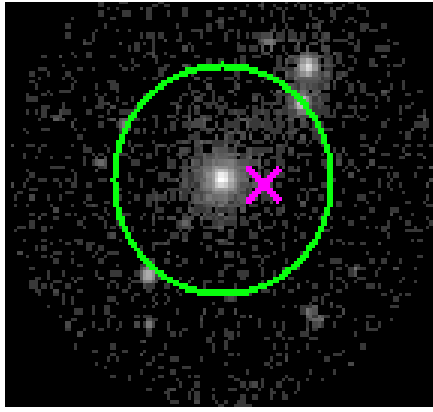


3 Gratings

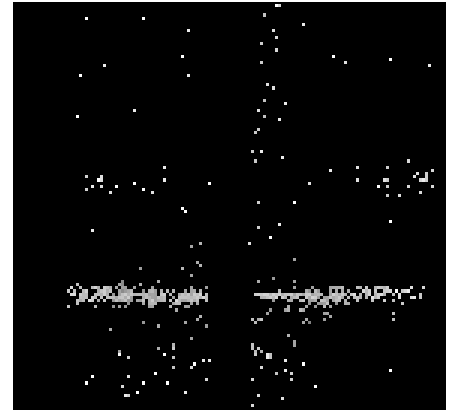
3.1 HEG Arm



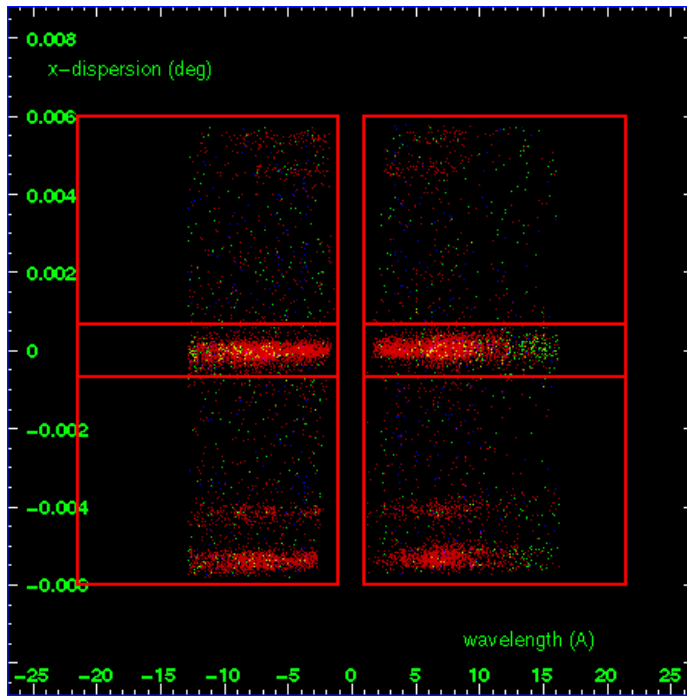
HEG Order Sort 123



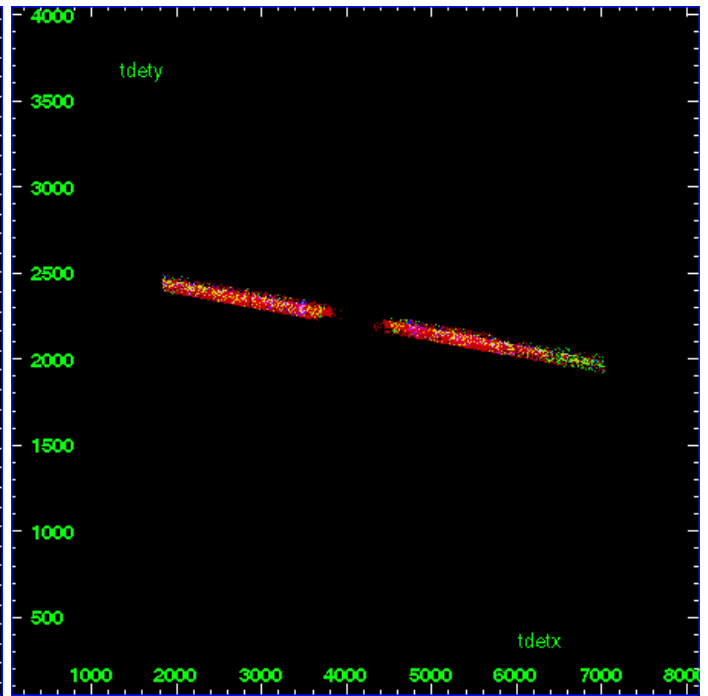
HEG Zero Order



HEG Order Sort ALL

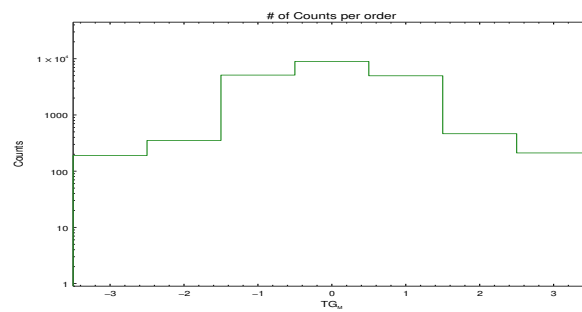


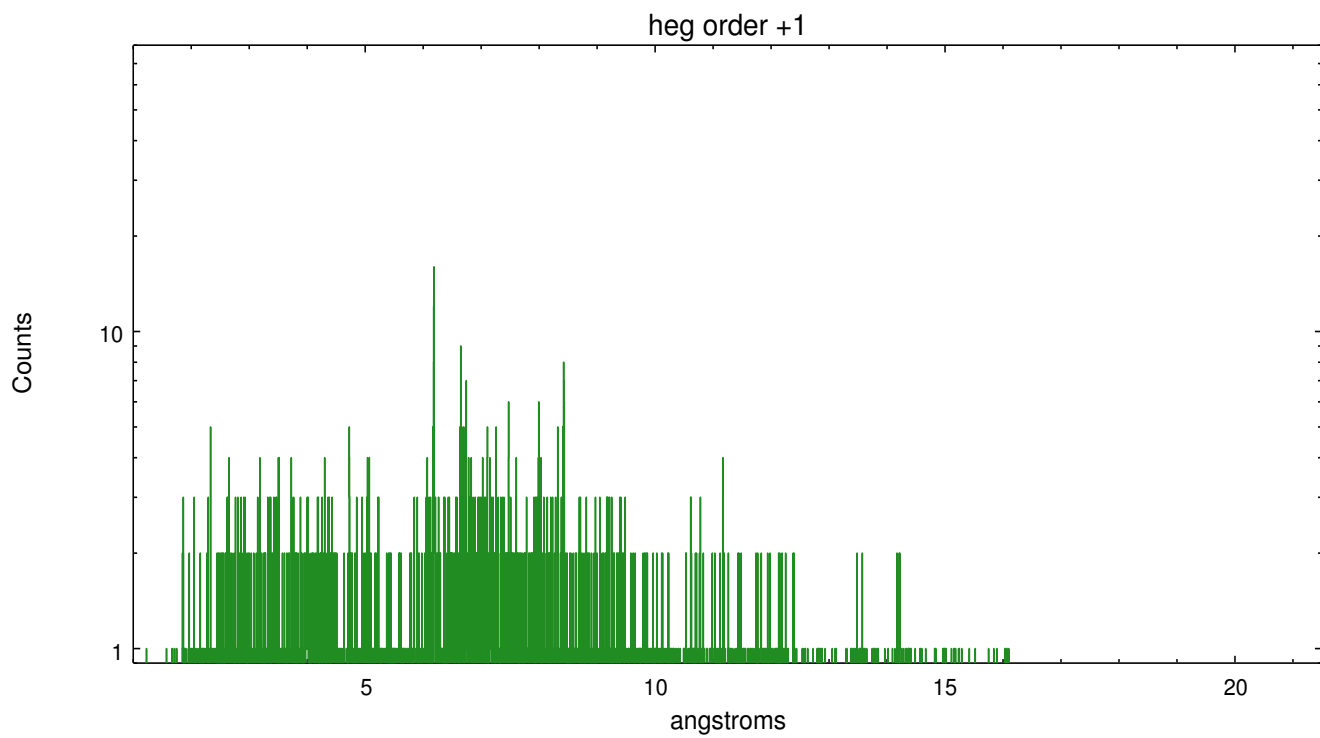
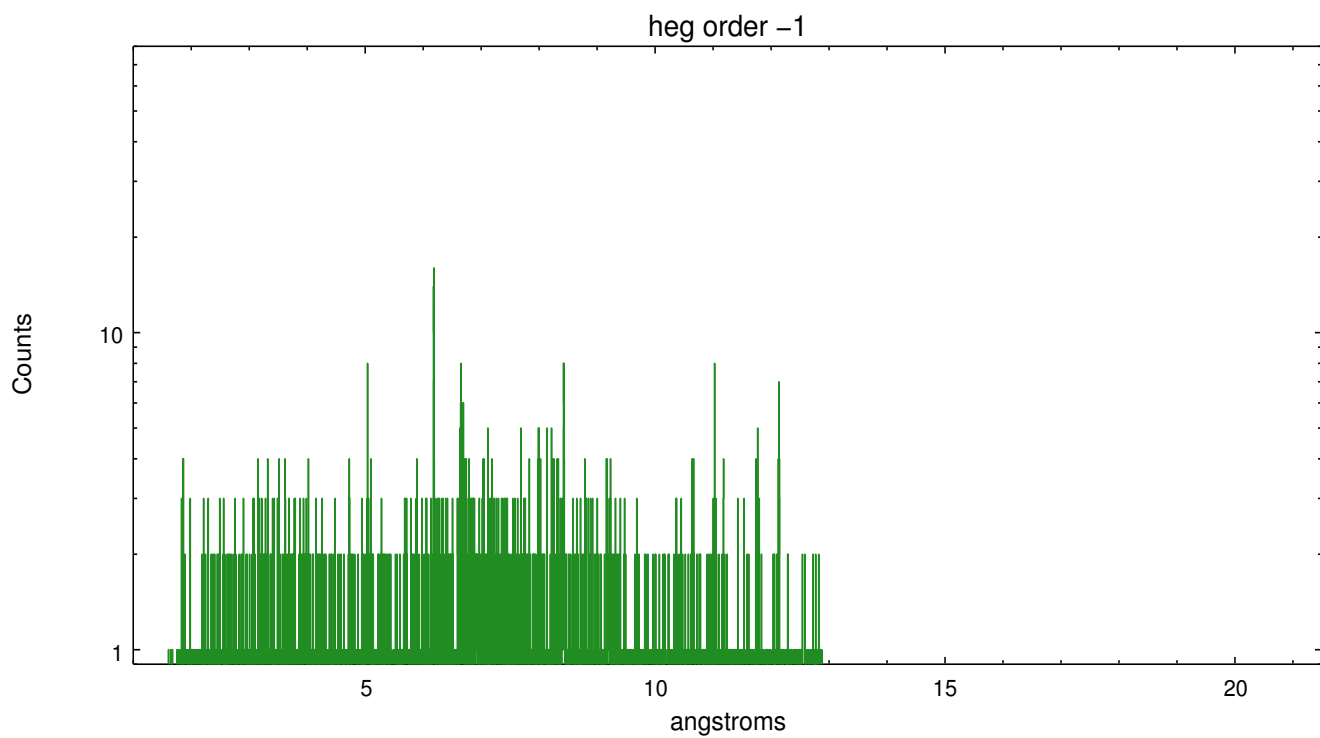
Spot Image HEG



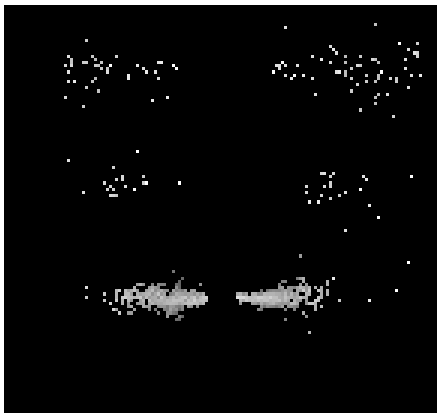
Full Detector HEG

	order -3	order -2	order -1	order 0	order 1	order 2	order 3
Events	190	352	5117	8946	4979	464	211

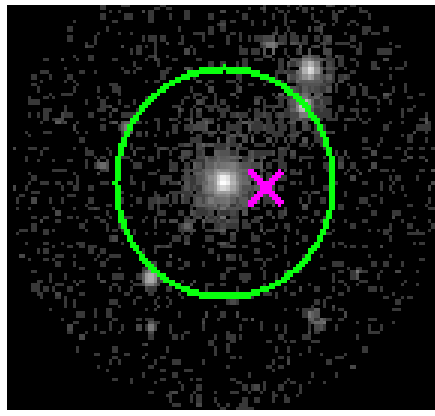




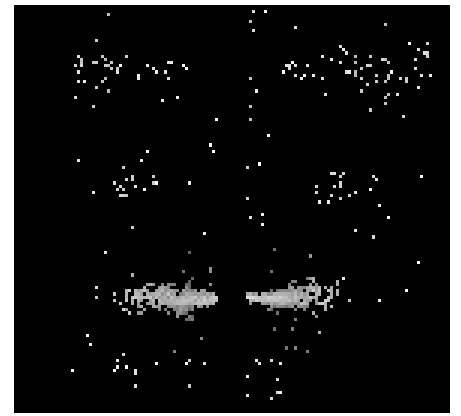
3.2 MEG Arm



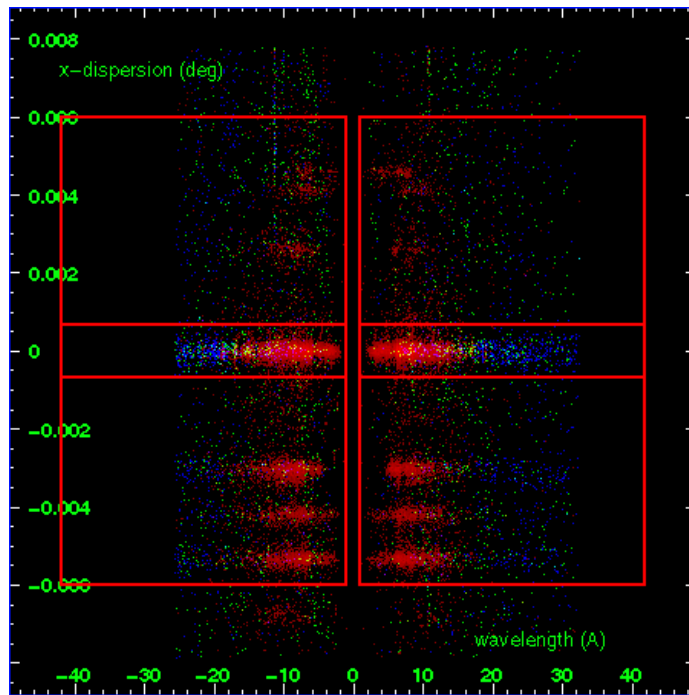
MEG Order Sort 123



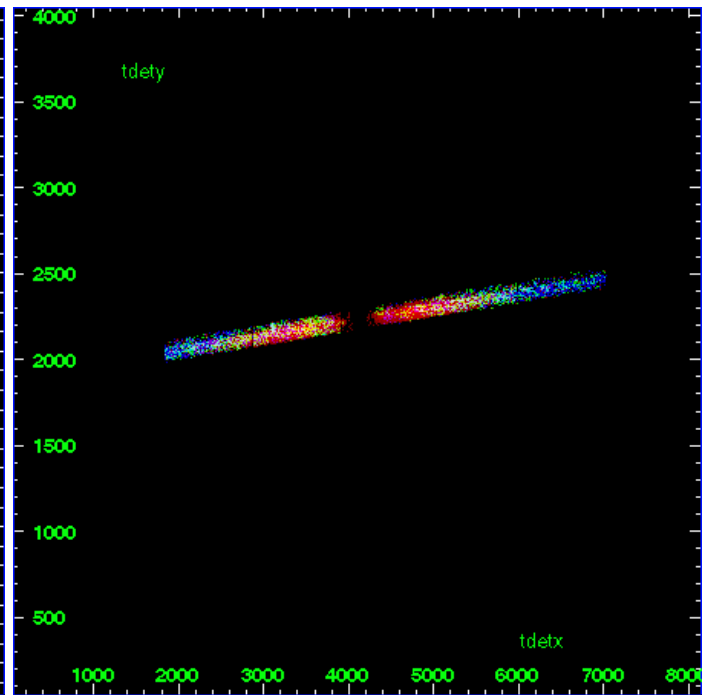
MEG Zero Order



MEG Order Sort ALL

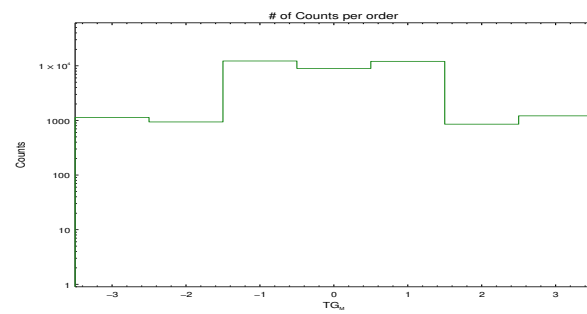


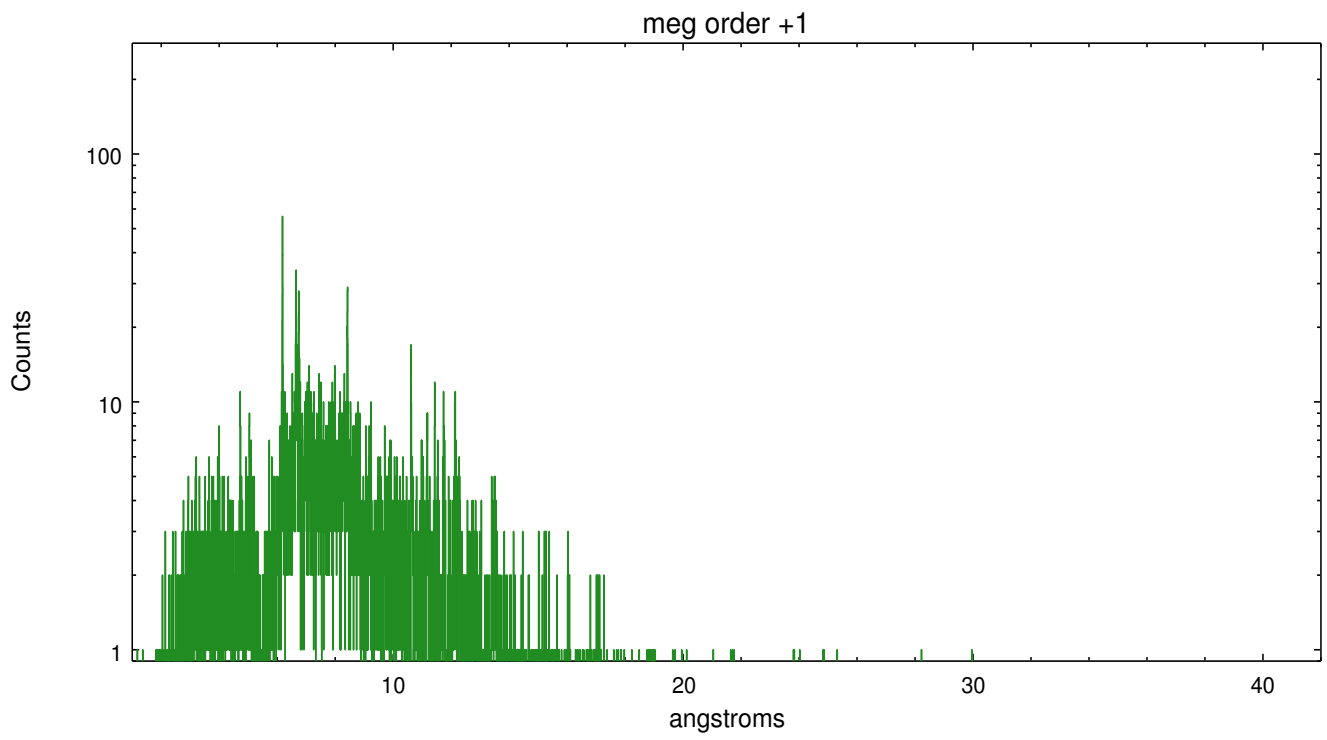
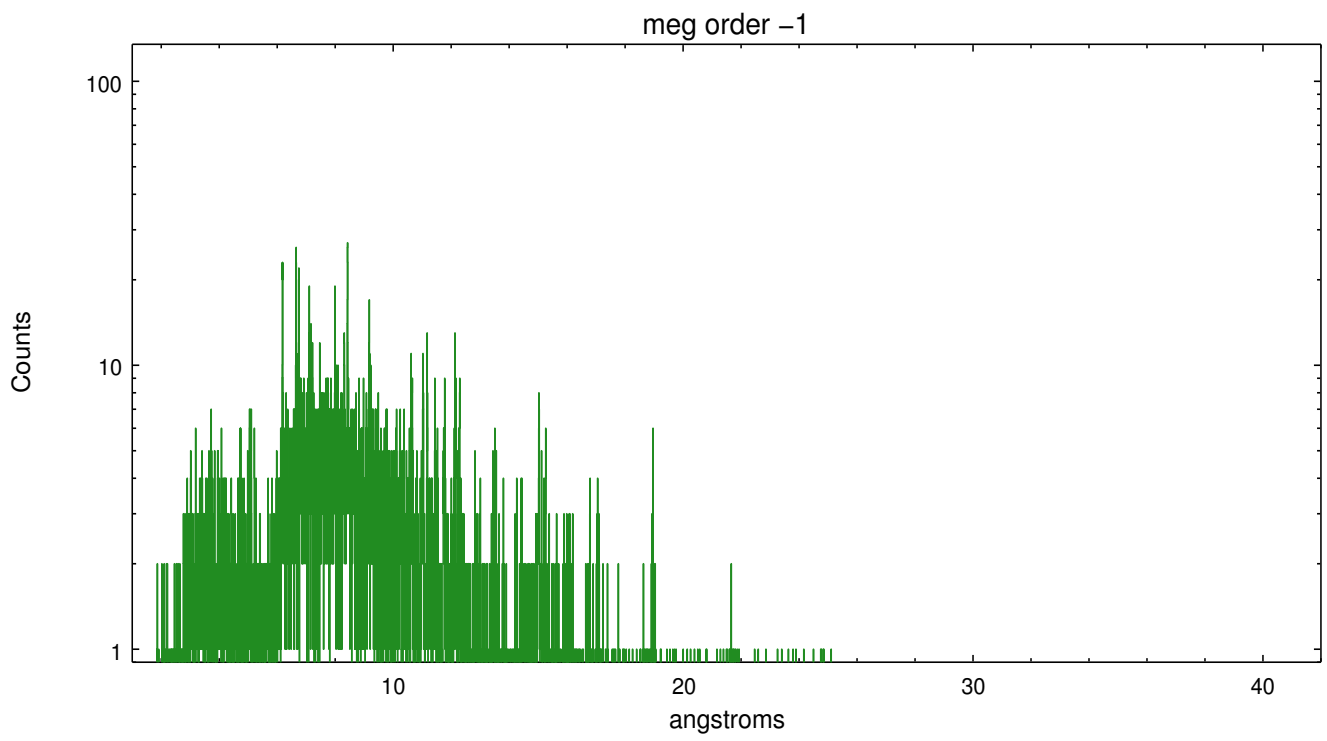
Spot Image MEG



Full Detector MEG

	order -3	order -2	order -1	order 0	order 1	order 2	order 3
Events	1133	938	12244	8946	12046	853	1213





A Summary

A.1 Status

V&V Scientist	David Huenemoerder
V&V Date (YYYY-MM-DD)	2009.12.07
V&V Edition	1
V&V Disposition and Status	OK
V&V Charge Time	31.311

A.2 Comments

Very crowded field; spectral confusion is likely.