

V&V Reference Report

L2 ASCDS Version : 8.4.5

Observation 955 - L2 Version 4
Chandra X-Ray Center

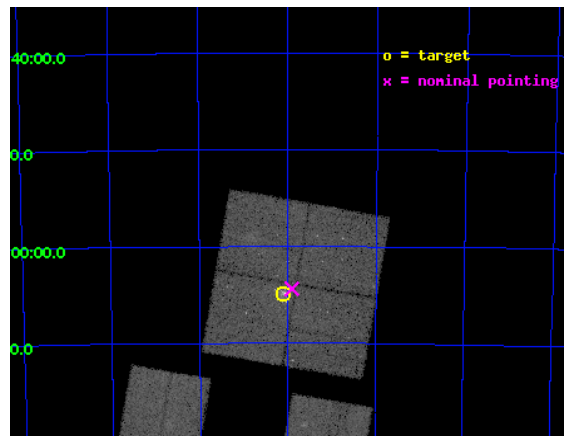
L2 Processing Date : Aug 24 2012

Contents

1	Front	2
2	OBI	3
2.1	OBI	3
2.1.1	Images	3
2.1.2	Bias	3
2.1.3	Parameters	4
2.1.4	Events	4
2.2	Compared Parameters	5
2.3	Aspect	6
2.4	Star Slots	9
2.4.1	Slot 3	9
2.4.2	Slot 4	10
2.4.3	Slot 5	11
2.4.4	Slot 6	12
2.4.5	Slot 7	13
2.5	FID Slots	14
2.5.1	Slot 0	14
2.5.2	Slot 1	15
2.5.3	Slot 2	16
A	Summary	17
A.1	Status	17
A.2	Comments	17

1 Front

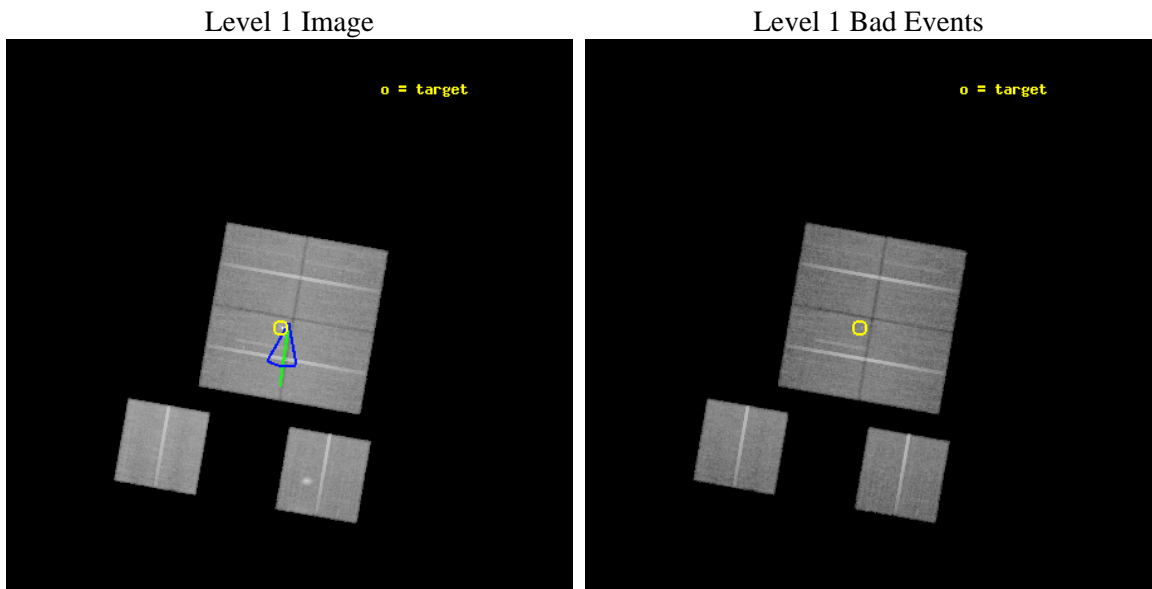
seq_num	300030	Sequence number
obs_id	955	Observation id
title	DIFFUSE X-RAY EMISSION IN GLOBULARS: HOT GAS VS. NON-THERMAL EMISSION IN 47 TUC	Proposal title
observer	Dr. Stephen Murray	Principal investigator
object	47 TUC	Source name
dtcycle	0	
cycle	P	events from which exps? Prim/Second/Both
ra_targ	6.0243	Observer's specified target RA [deg]
dec_targ	-72.0809	Observer's specified target Dec [deg]
ra_nom	5.976958043481	Nominal RA [deg]
dec_nom	-72.072939134884	Nominal Dec [deg]
roll_nom	189.91752501158	Nominal Roll [deg]
revision	4	Processing version of data
ontime	32080.000029862	Sum of GTIs [s]
livetime	31673.783753227	Livetime [s]
ontime0	32073.518119395	Sum of GTIs [s]
ontime1	32076.759079635	Sum of GTIs [s]
ontime2	32080.000029862	Sum of GTIs [s]
ontime3	32080.000029862	Sum of GTIs [s]
ontime6	32080.000029862	Sum of GTIs [s]
ontime8	32080.000029862	Sum of GTIs [s]
l2events	147967	Number of level 2 events



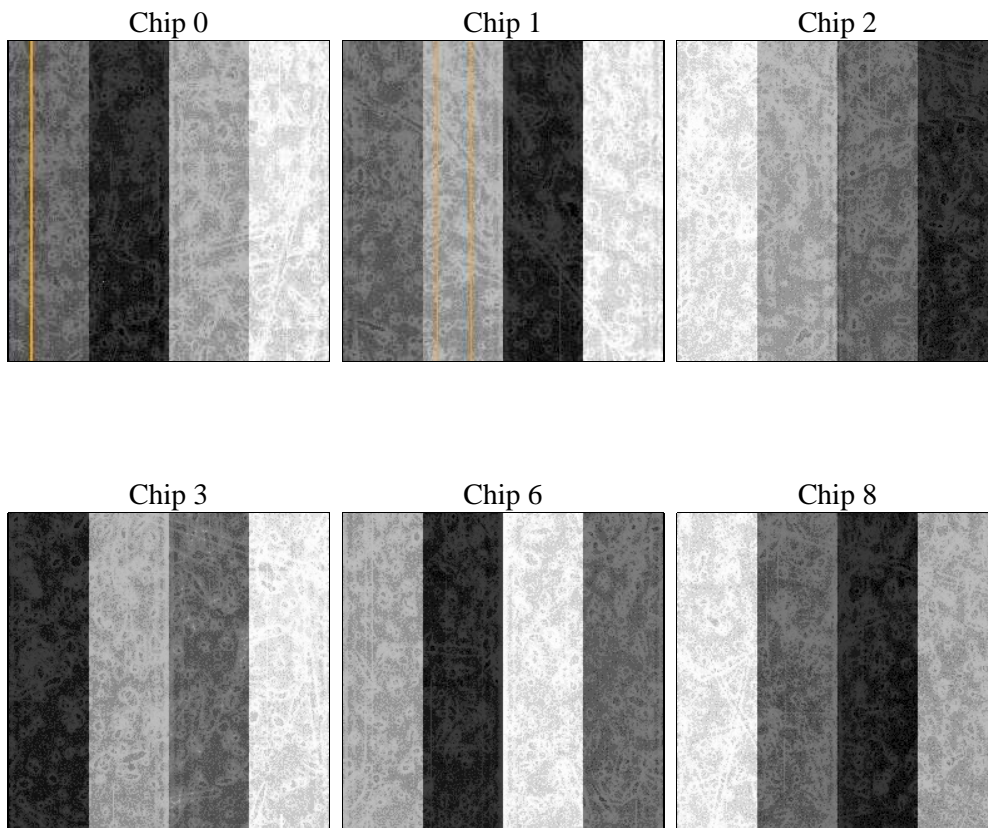
2 OBI

2.1 OBI

2.1.1 Images



2.1.2 Bias



2.1.3 Parameters

obi_num	0	Obi number	sched_exp_time	33000.000000	[s] Scheduled observation exposure time
ascdsver	8.4.5	Processing system revision	ontime	32080.000029862	Sum of GTIs [s]
caldbver	4.5.1.1	 	ontime0	32073.518119395	Sum of GTIs [s]
date	2012-08-24T14:34:43	Date and time of file creation	ontime1	32076.759079635	Sum of GTIs [s]
revision	4	Processing version of data	ontime2	32080.000029862	Sum of GTIs [s]
			ontime3	32080.000029862	Sum of GTIs [s]
			ontime6	32080.000029862	Sum of GTIs [s]
			ontime8	32080.000029862	Sum of GTIs [s]
			l1events	1453034	Number of level 1 events

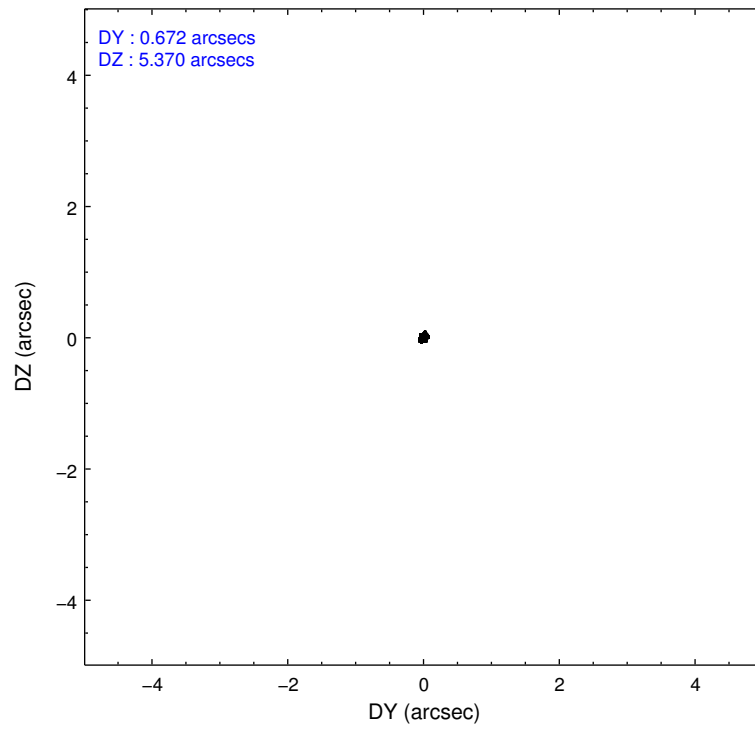
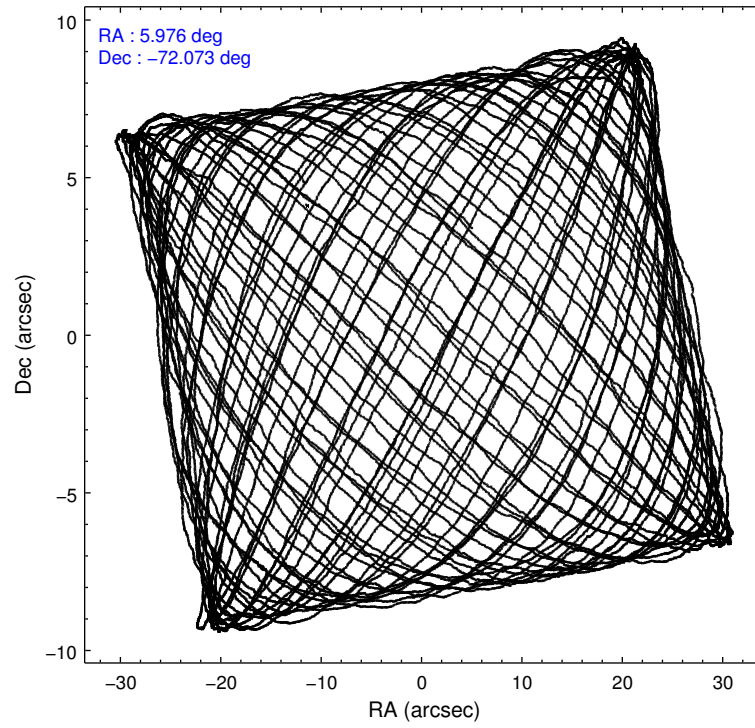
2.1.4 Events

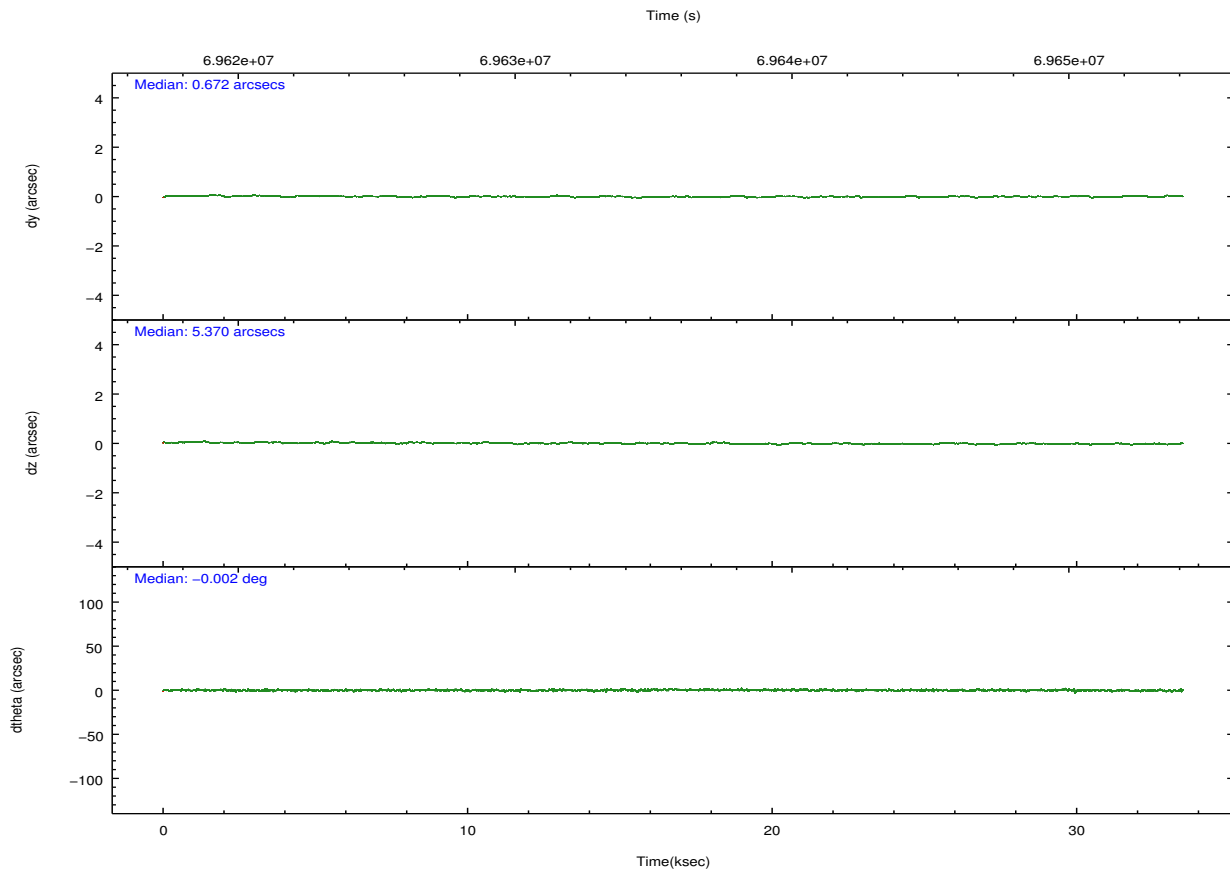
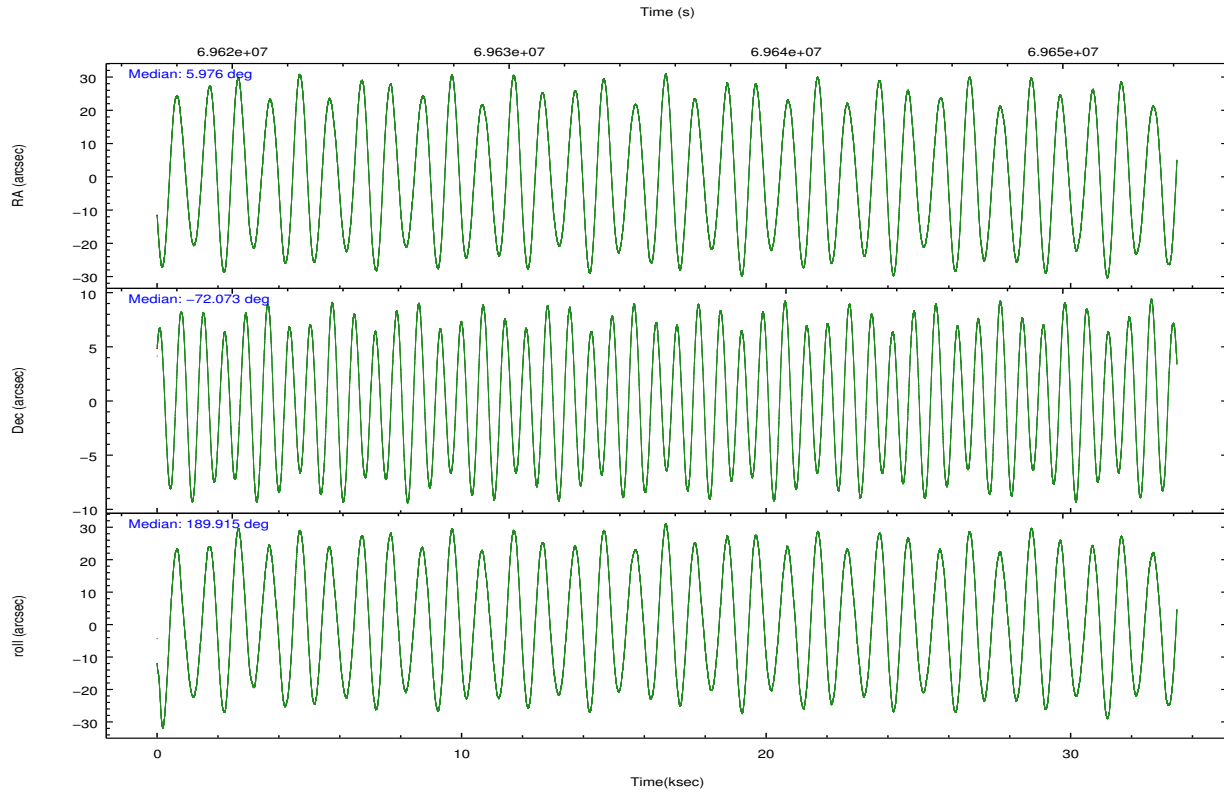
	ccd 0	ccd 1	ccd 2	ccd 3	ccd 6	ccd 8		ccd 0	ccd 1	ccd 2	ccd 3	ccd 6	ccd 8
level 1 events	218747	212551	238908	243702	238679	300447	grade 0 events	11130	11600	10998	18237	18545	16771
rejected events	193295	185499	214287	210465	204322	246313		5%	5%	4%	7%	7%	5%
rejected %	88%	87%	89%	86%	85%	81%	grade 1 events	114	105	111	300	109	161
								0%	0%	0%	0%	0%	0%
							grade 2 events	5187	5035	4949	5419	5534	11572
								2%	2%	2%	2%	2%	3%
							grade 3 events	2634	2873	2319	2695	2846	6056
								1%	1%	0%	1%	1%	2%
							grade 4 events	2402	2840	2232	2646	2790	5640
								1%	1%	0%	1%	1%	1%
							grade 5 events	7176	7757	6864	7893	8178	10877
								3%	3%	2%	3%	3%	3%
							grade 6 events	4102	4707	4126	4247	4646	14102
								1%	2%	1%	1%	1%	4%
							grade 7 events	186002	177634	207309	202265	196031	235268
								85%	83%	86%	82%	82%	78%

2.2 Compared Parameters

Parameter	Planned	Actual	Parameter	Planned	Actual
Instrument	ACIS	ACIS	Obspar format version number	7	7
Detector	ACIS-012368	ACIS-012368	Obspar file type	PREDICTED	ACTUAL
Grating	NONE	NONE	Obspar update status	NONE	UPDATED
Data mode	FAINT	FAINT	Number of optional ACIS chips dropped	0	0
Observation mode	POINTING	POINTING	On-chip summing requested	N	N
[deg] Pointing RA	6.046282	5.976958043481011	Subarray requested	NONE	NONE
[deg] Pointing Dec	-72.055378	-72.07293913488397	Alternating exposures requested	N	N
[deg] Pointing Roll	189.774805	189.9175250115801	[s] Primary exposure time	0.000000	3.2
[deg] Roll angle	190.000000	190.000000			
[deg] Roll tolerance	20.000000	20.000000			
Roll constraint allows 180D rotation	N	N			
[mm] SIM focus pos	-0.782348	-0.7809083437167272			
[mm] SIM defocus	0	0.001439871863259334			
[mm] SIM translation stage pos	-233.592463	-233.5874344608287			
[mm] SIM translation stage offset	0	-0.005018542100998502			
[s] Observation start time (MET)	69619450.184000	69618783.902705			
Observation start date	2000-03-16T18:43:06	2000-03-16T18:33:03			
[s] Observation end time (MET)	69652450.184000	69652583.79144099			
Observation end date	2000-03-17T03:53:06	2000-03-17T03:56:23			
Read mode	TIMED	TIMED			

2.3 Aspect



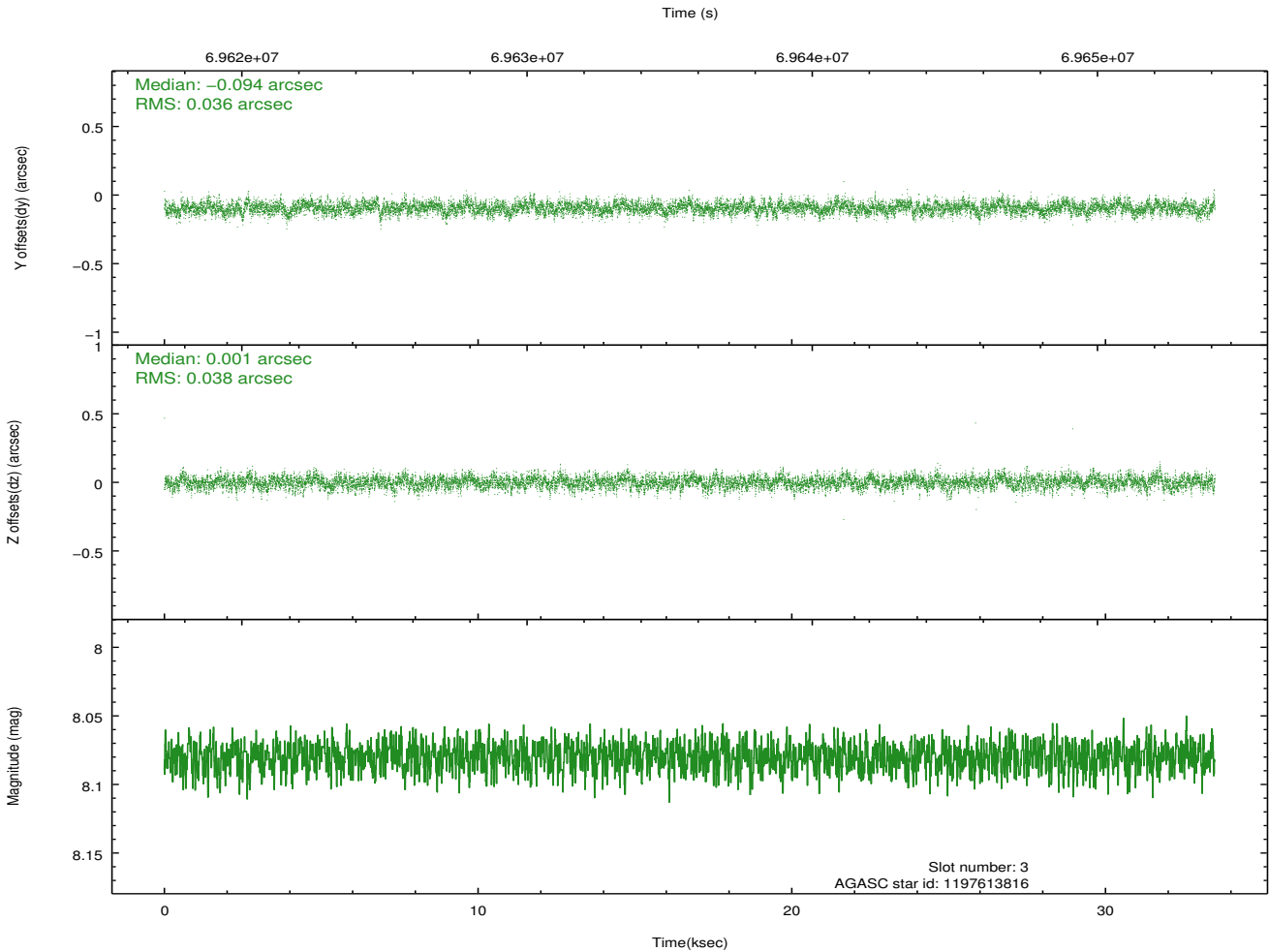
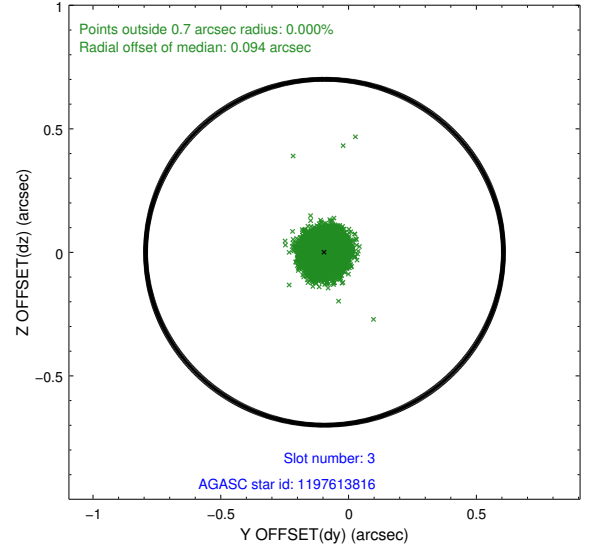
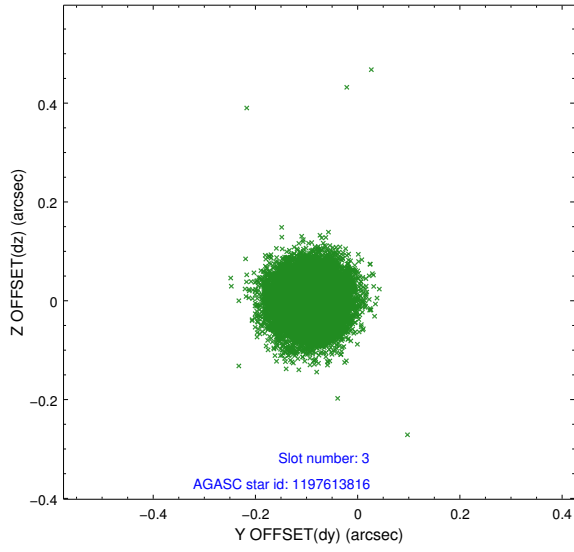


Slot Statistics

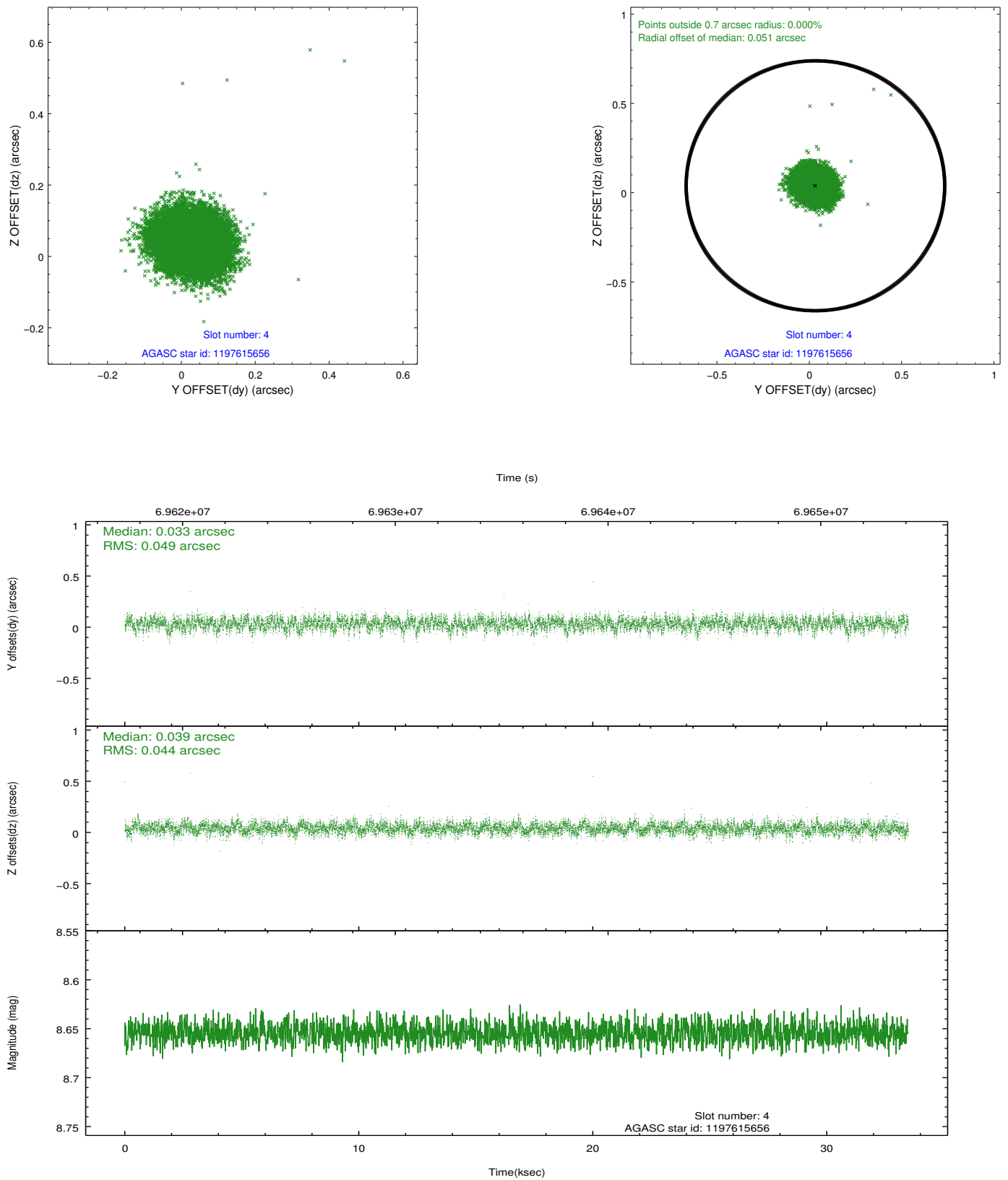
slot	status	id	mag	n_pts	med_dy	med_dz	dr1	dr2	ra	dec	mean_y	mean_z
0	FID	ACIS-I-2	7.15	8167	-0.028	-0.039	0.009	0.016	0.000000	0.000000	-755.02	-835.12
1	FID	ACIS-I-4	7.19	8166	-0.040	0.035	0.006	0.011	0.000000	0.000000	2159.01	1071.09
2	FID	ACIS-I-5	7.23	8167	-0.034	0.073	0.009	0.015	0.000000	0.000000	-1808.78	1069.04
3	GUIDE	1197613816	8.08	16334	-0.094	0.001	0.055	0.090	5.181461	-71.977993	902.51	-430.87
4	GUIDE	1197615656	8.65	16333	0.033	0.039	0.069	0.113	6.909375	-71.882658	-1056.92	-441.57
5	GUIDE	1197607928	9.62	16327	0.076	-0.005	0.095	0.151	7.837743	-72.165759	-1874.27	756.14
6	GUIDE	1197619752	10.01	16315	0.055	0.004	0.128	0.207	4.510721	-71.856694	1578.01	-975.03
7	GUIDE	1197608712	10.07	16324	-0.073	-0.037	0.109	0.177	5.990463	-72.316052	219.01	914.74

2.4 Star Slots

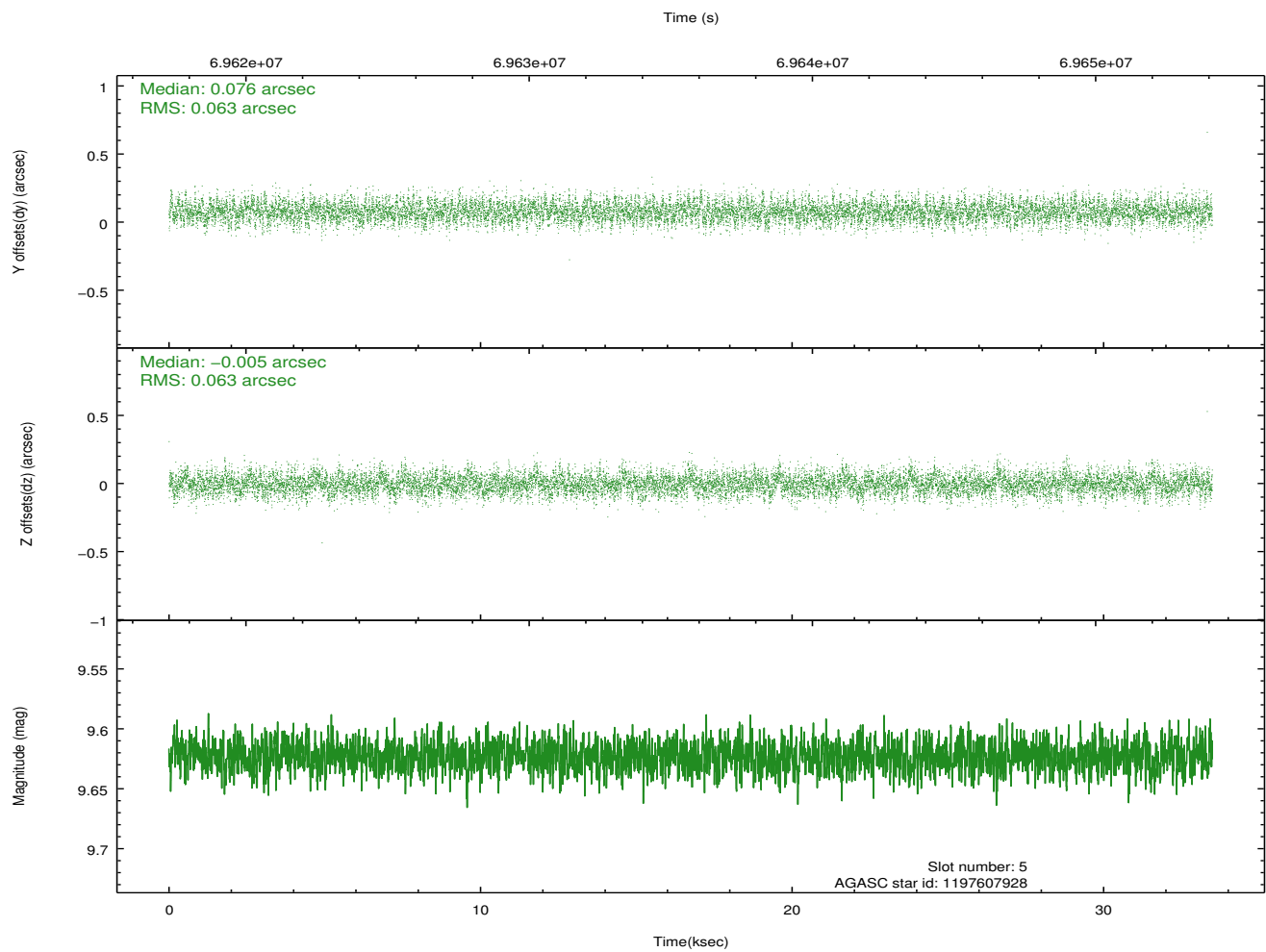
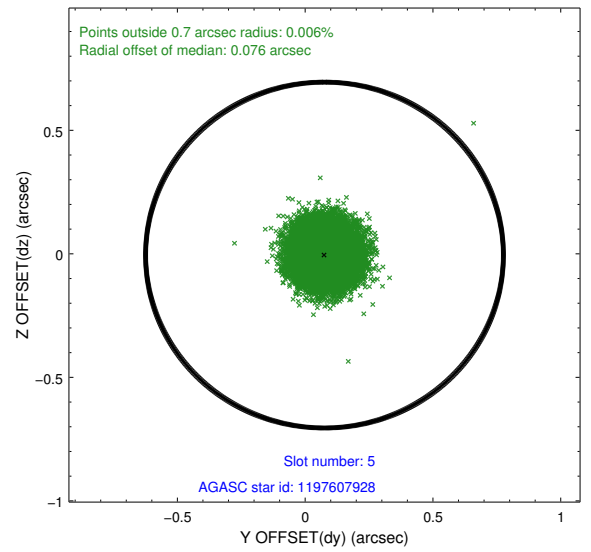
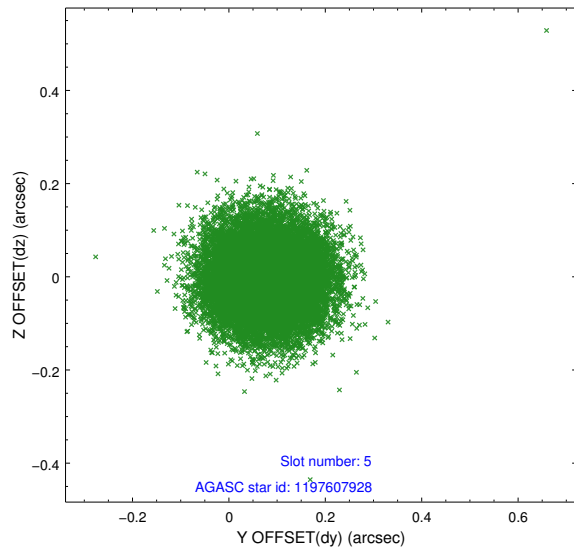
2.4.1 Slot 3



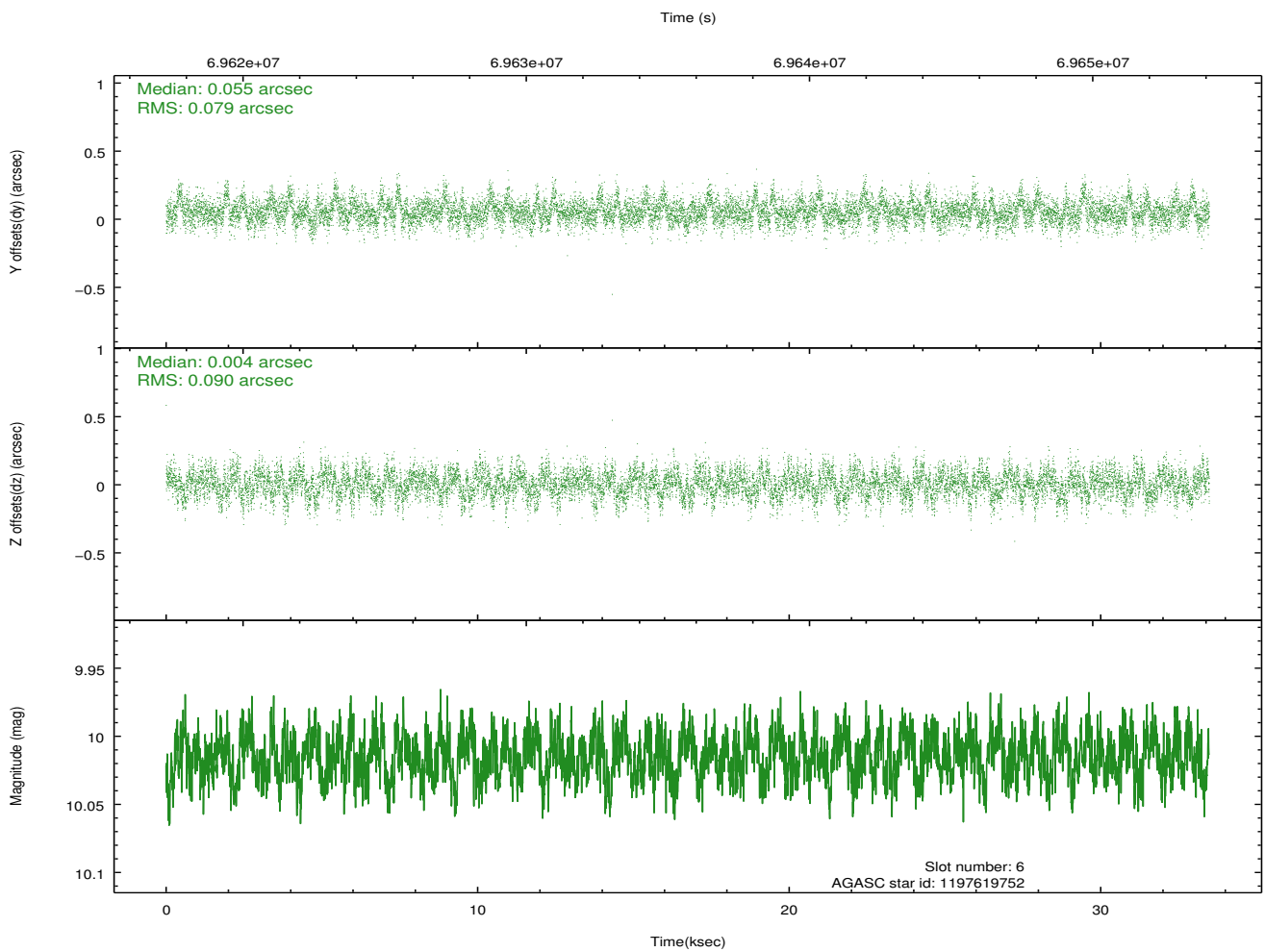
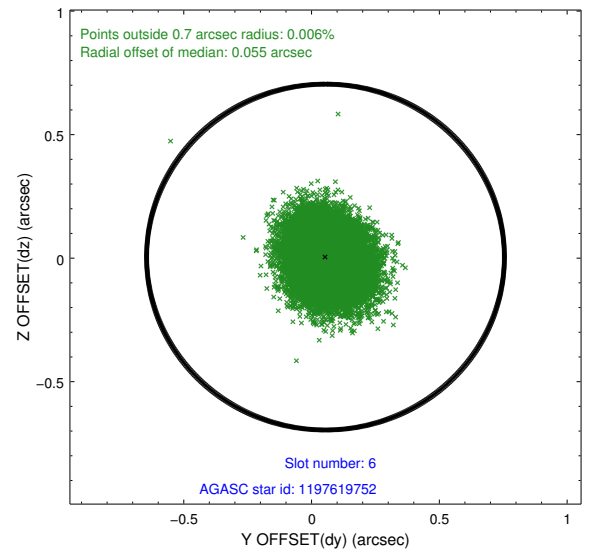
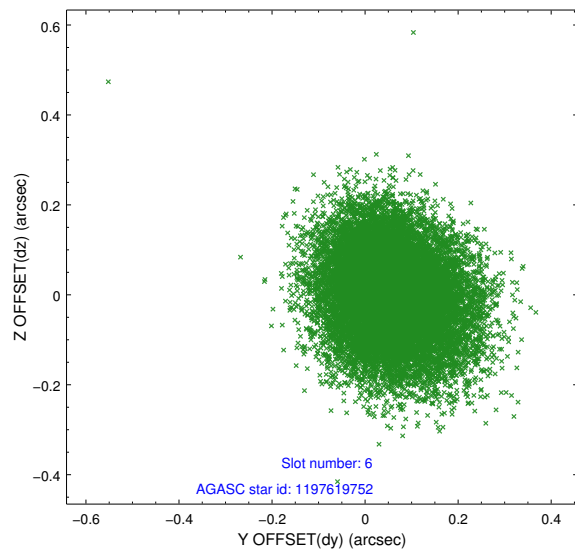
2.4.2 Slot 4



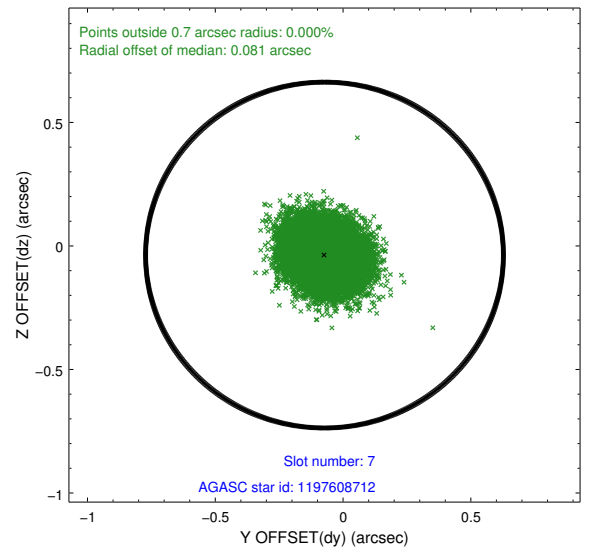
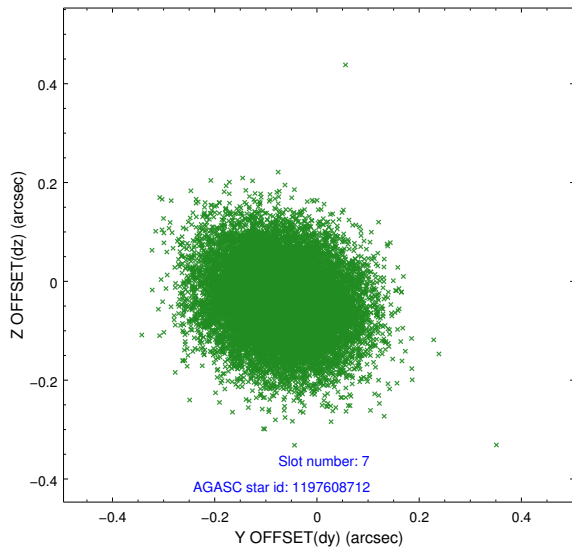
2.4.3 Slot 5



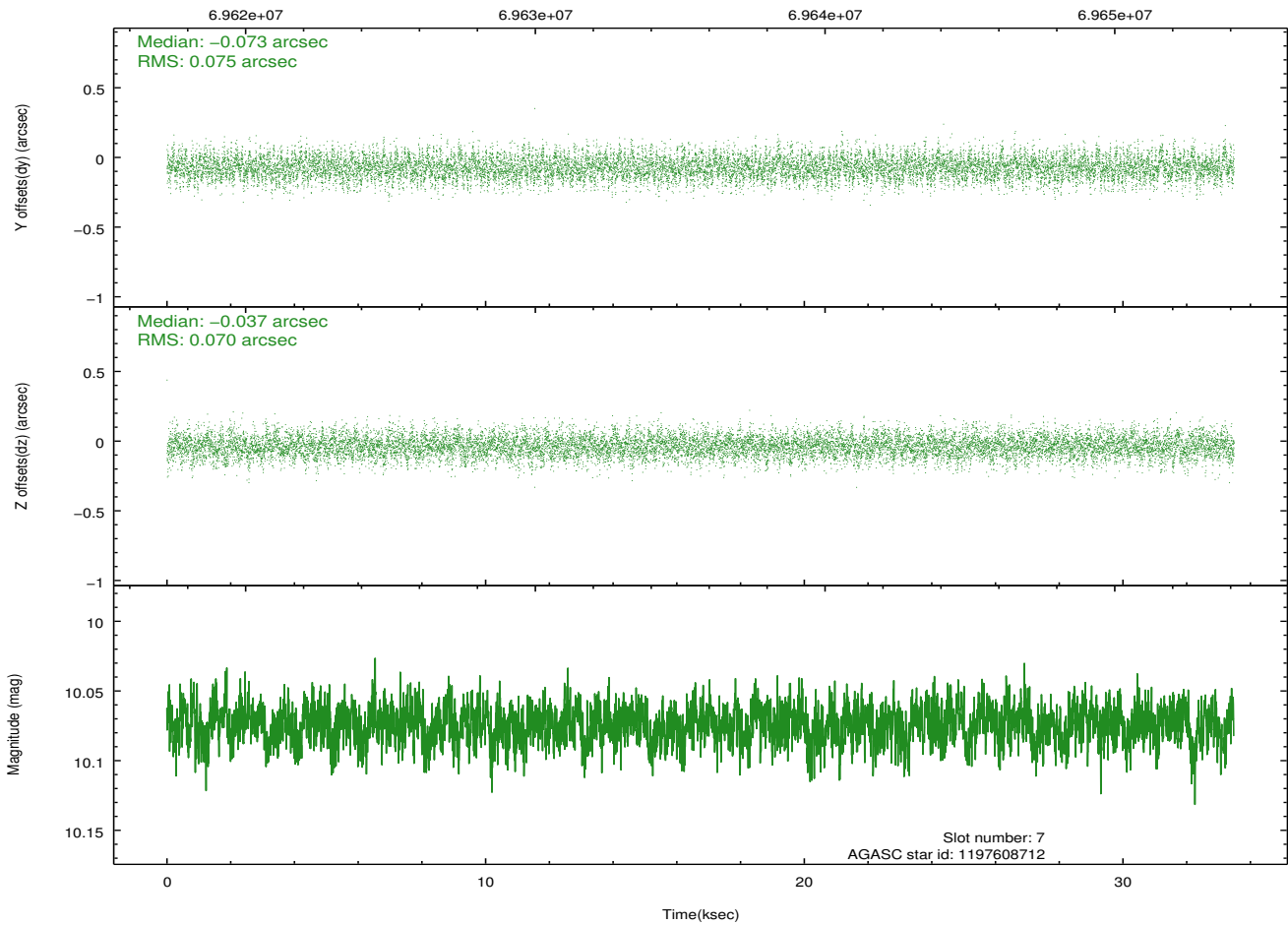
2.4.4 Slot 6



2.4.5 Slot 7

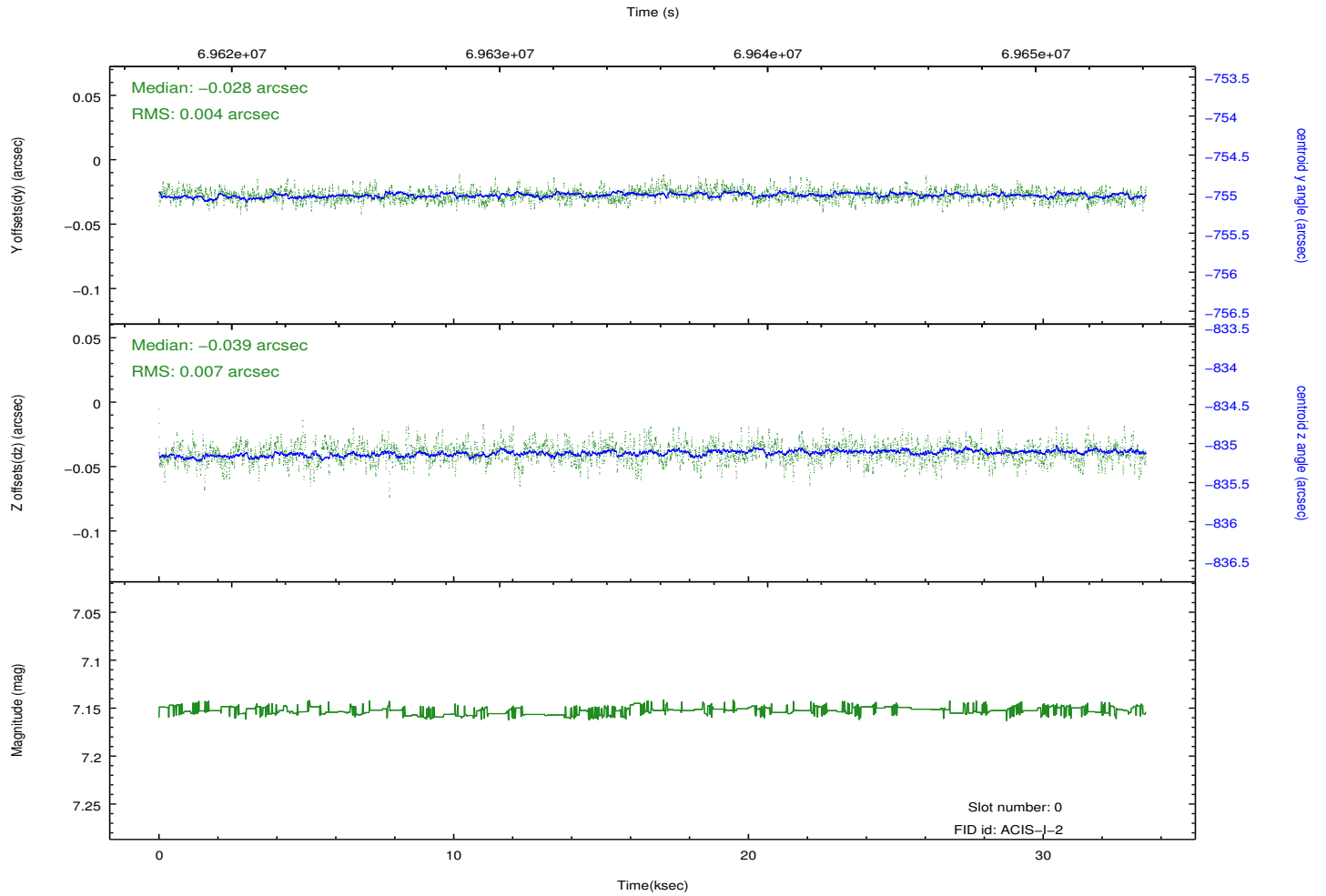
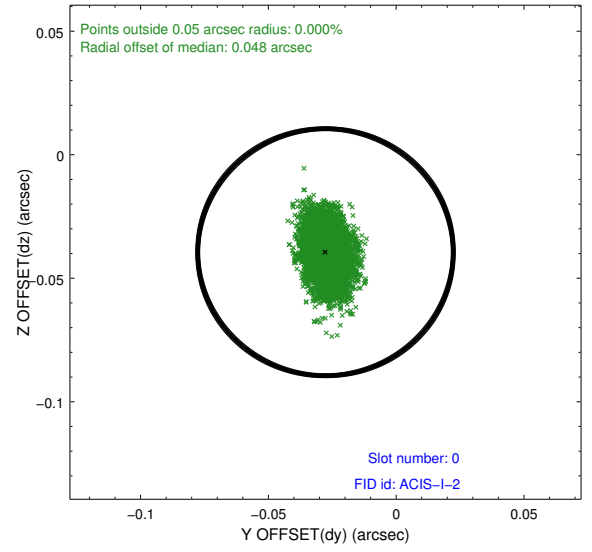
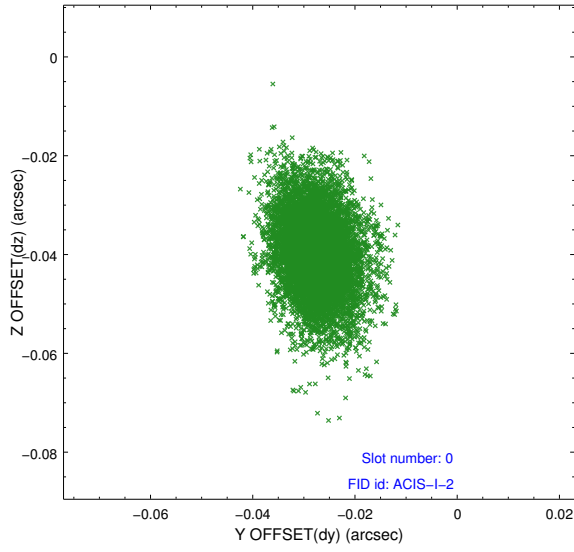


Time (s)

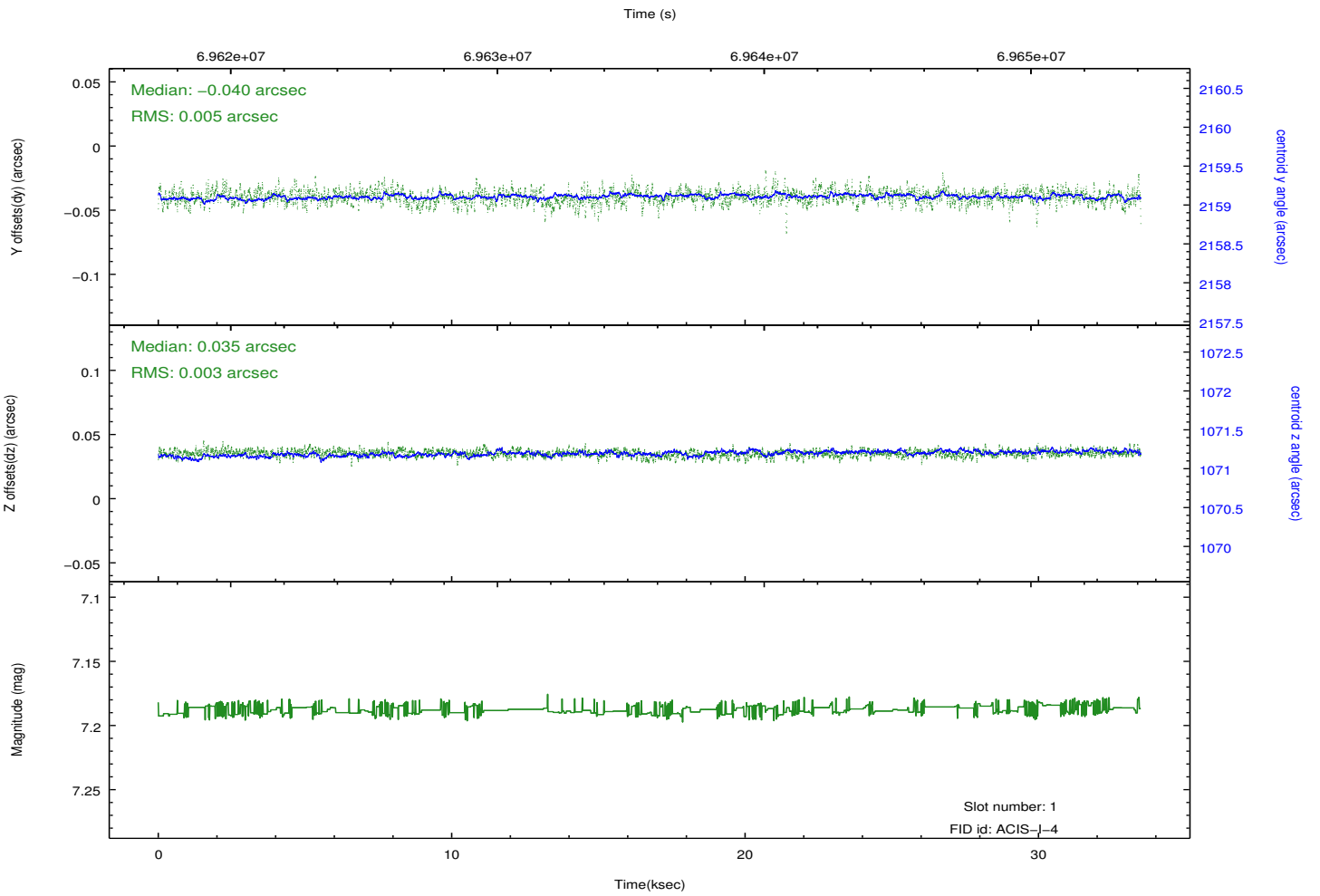
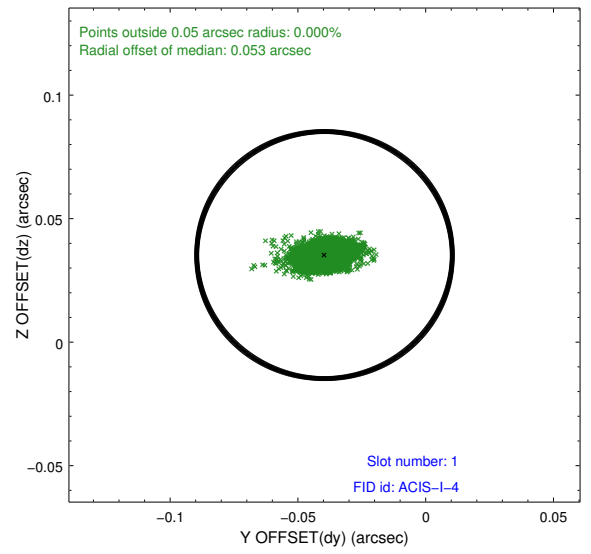
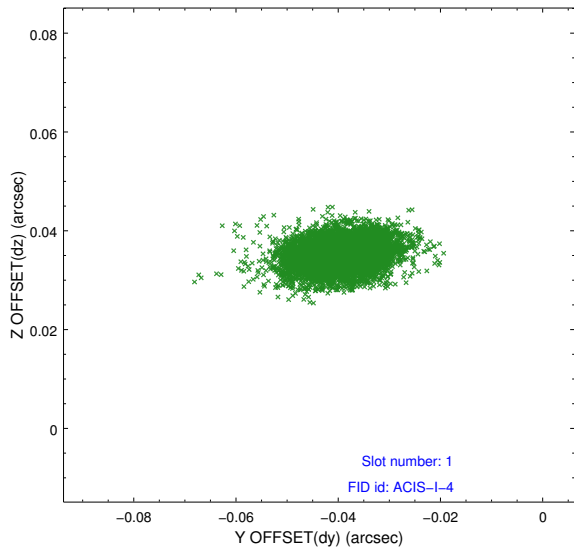


2.5 FID Slots

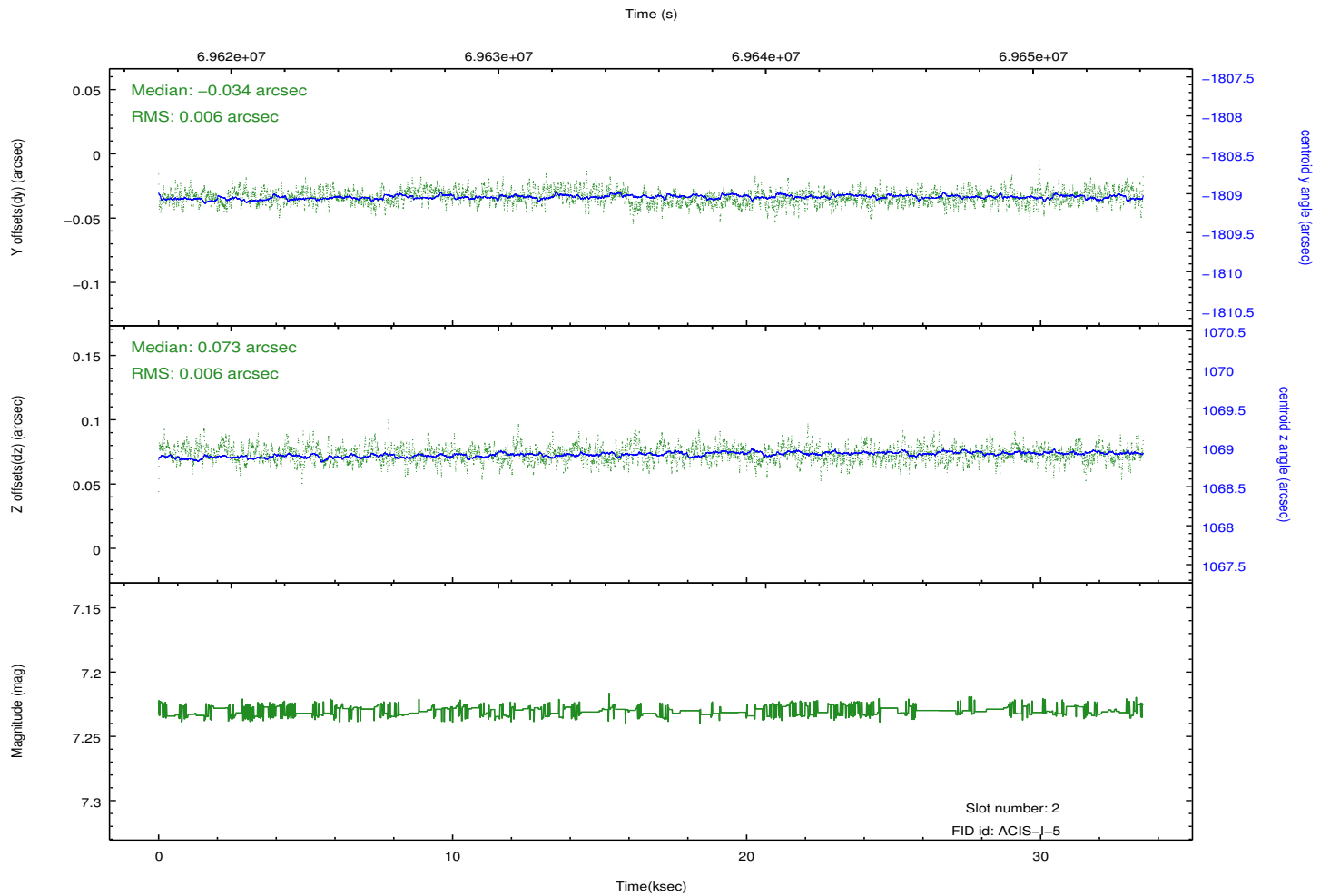
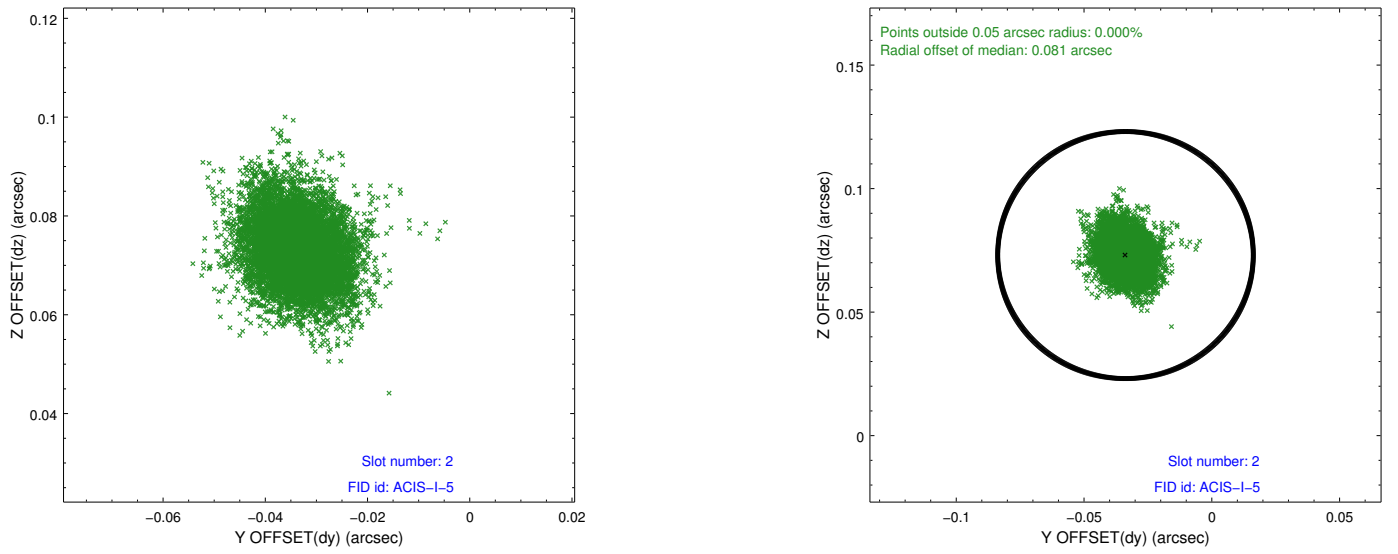
2.5.1 Slot 0



2.5.2 Slot 1



2.5.3 Slot 2



A Summary

A.1 Status

V&V Scientist	Jen Lauer
V&V Date (YYYY-MM-DD)	2012.08.27
V&V Edition	1
V&V Disposition and Status	OK
V&V Charge Time	32.083

A.2 Comments

Roll constraint met.