

V&V Reference Report

L2 ASCDS Version : 10.4.1

Observation 17607 - L2 Version 1
Chandra X-Ray Center

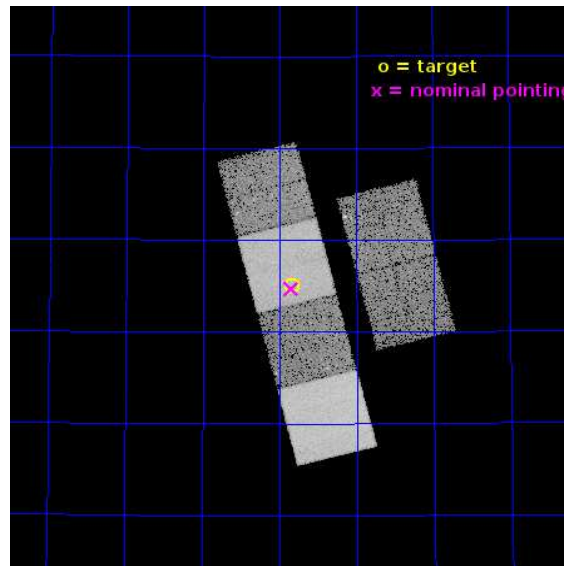
L2 Processing Date : Aug 23 2015

Contents

1	Front	2
2	OBI	3
2.1	OBI	3
2.1.1	Images	3
2.1.2	Bias	3
2.1.3	Parameters	4
2.1.4	Events	4
2.2	Compared Parameters	5
2.3	Aspect	6
2.4	Star Slots	9
2.4.1	Slot 3	9
2.4.2	Slot 4	10
2.4.3	Slot 5	11
2.4.4	Slot 6	12
2.4.5	Slot 7	13
2.5	FID Slots	14
2.5.1	Slot 0	14
2.5.2	Slot 1	15
2.5.3	Slot 2	16
A	Summary	17
A.1	Status	17
A.2	Comments	17

1 Front

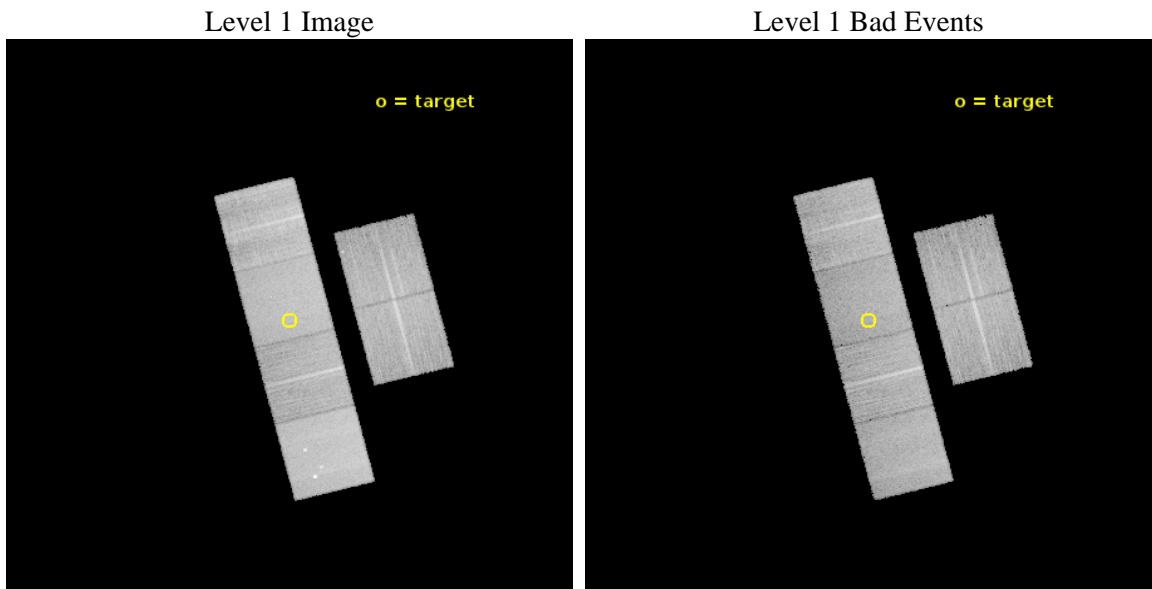
seq_num	703124	Sequence number
obs_id	17607	Observation id
title	X-Ray Production in the Unique Relativistic Tidal Disruption Event Sw1644+57	Proposal title
observer	Dr Bevin Zauderer	Principal investigator
object	Sw1644+57	Source name
dtcycle	0	
cycle	P	events from which exps? Prim/Second/Both
ra_targ	251.207917	Observer's specified target RA [deg]
dec_targ	57.58325	Observer's specified target Dec [deg]
ra_nom	251.2121037336	Nominal RA [deg]
dec_nom	57.578320961774	Nominal Dec [deg]
roll_nom	255.63899922218	Nominal Roll [deg]
revision	1	Processing version of data
ontime	19955.200297356	Sum of GTIs [s]
livetime	19702.515535611	Livetime [s]
ontime2	19951.959276915	Sum of GTIs [s]
ontime3	19955.200297356	Sum of GTIs [s]
ontime5	19955.200297356	Sum of GTIs [s]
ontime6	19955.200297356	Sum of GTIs [s]
ontime7	19955.200297356	Sum of GTIs [s]
ontime8	19955.200297356	Sum of GTIs [s]
l2events	177655	Number of level 2 events



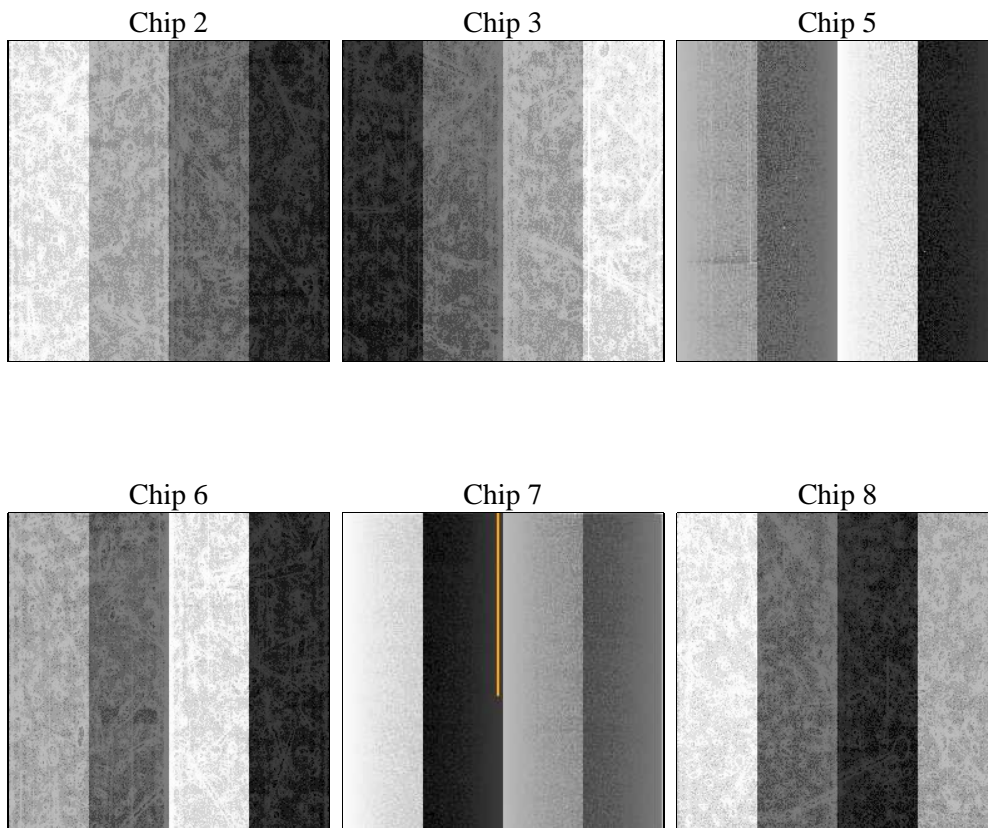
2 OBI

2.1 OBI

2.1.1 Images



2.1.2 Bias



2.1.3 Parameters

obi_num	0	Obi number	sched_exp_time	20000.000000	[s] Scheduled observation exposure time
ascdsver	10.4.1	Processing system revision	ontime	19955.200297356	Sum of GTIs [s]
caldsver	4.6.8	 	ontime2	19951.959276915	Sum of GTIs [s]
date	2015-08-23T19:47:28	Date and time of file creation	ontime3	19955.200297356	Sum of GTIs [s]
revision	1	Processing version of data	ontime5	19955.200297356	Sum of GTIs [s]
			ontime6	19955.200297356	Sum of GTIs [s]
			ontime7	19955.200297356	Sum of GTIs [s]
			ontime8	19955.200297356	Sum of GTIs [s]
			l1events	765261	Number of level 1 events

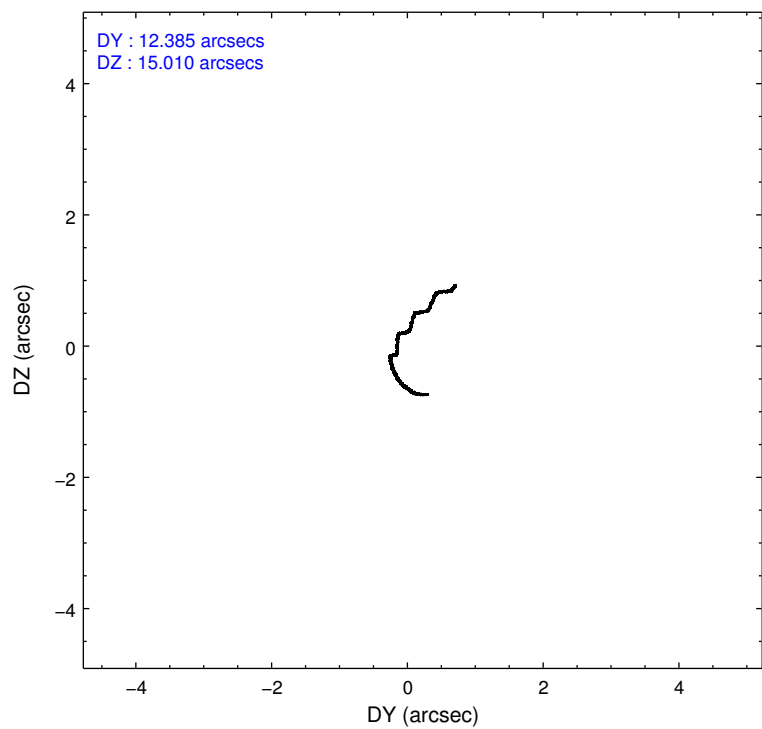
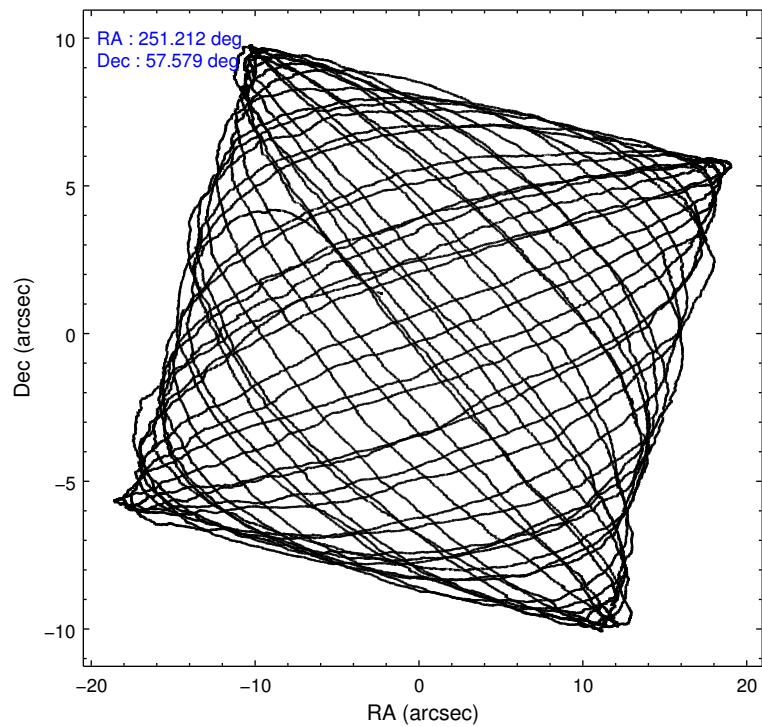
2.1.4 Events

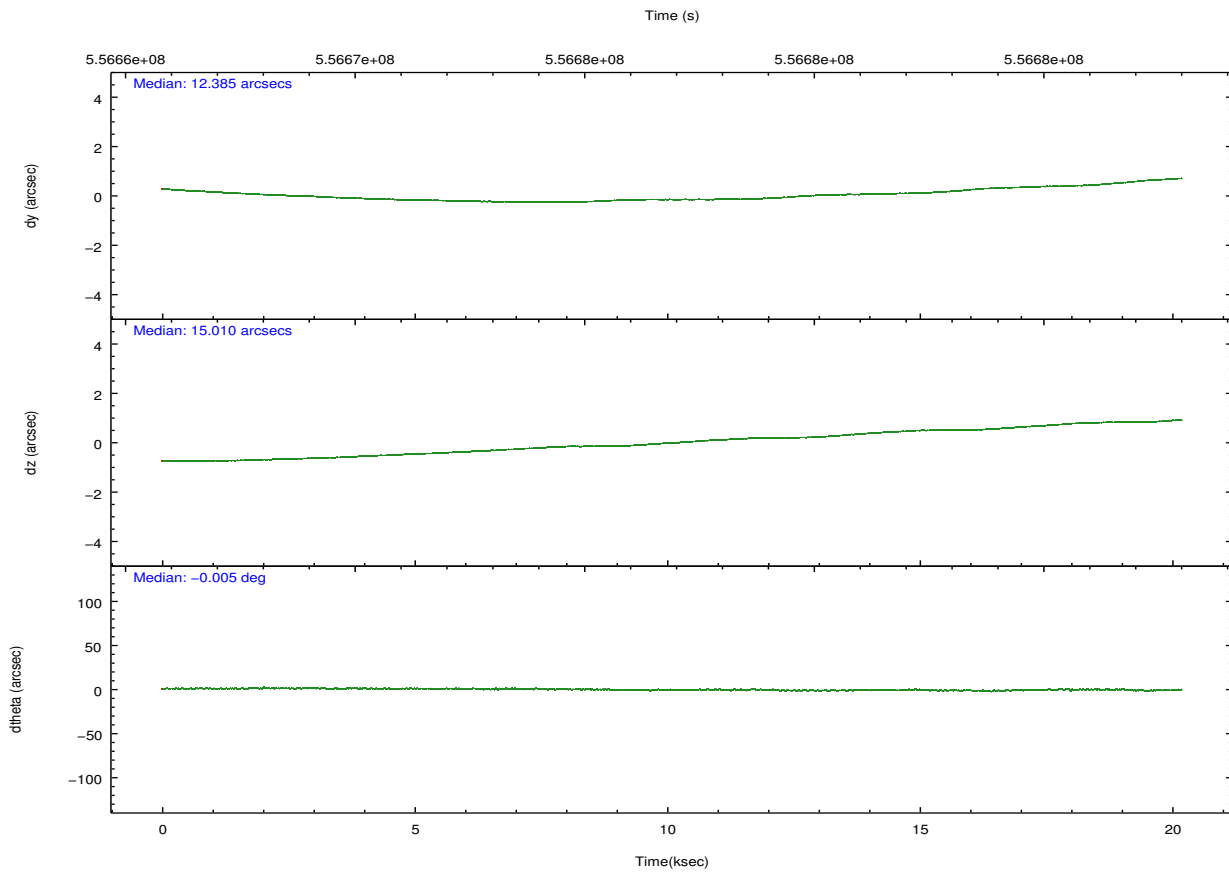
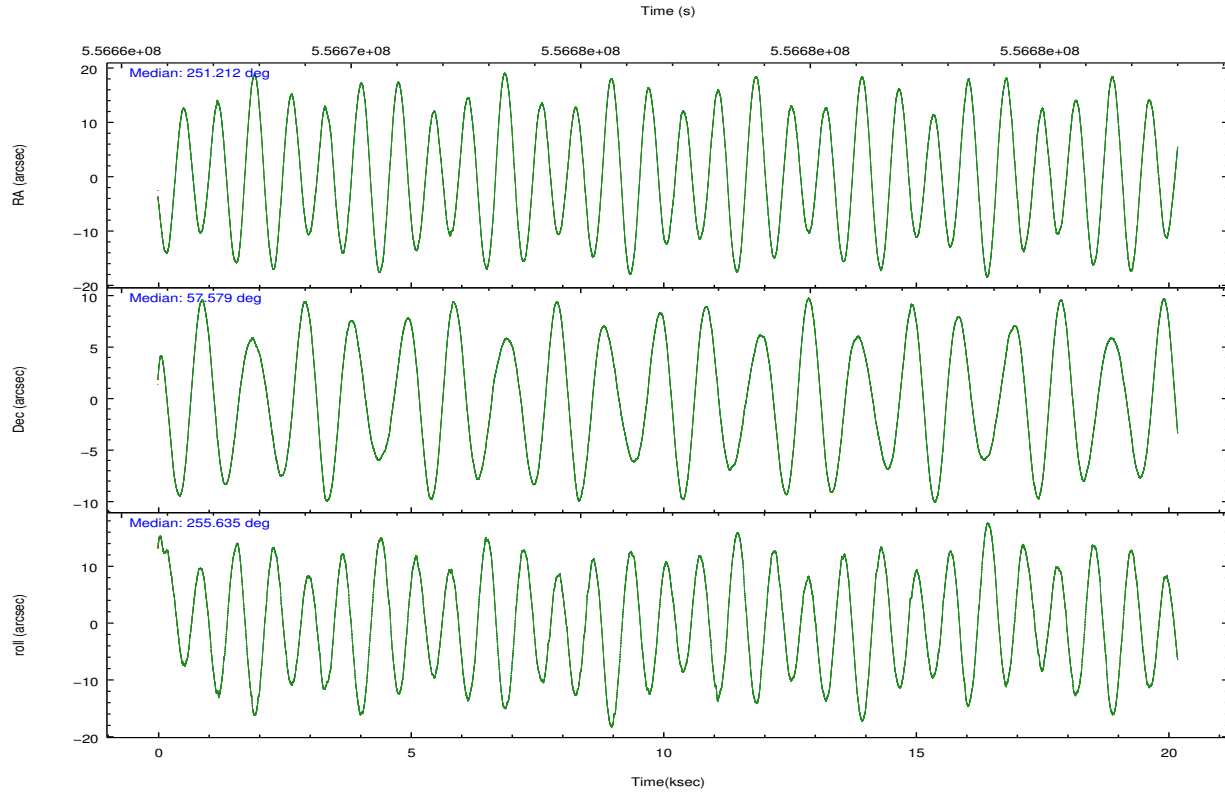
	ccd 2	ccd 3	ccd 5	ccd 6	ccd 7	ccd 8		ccd 2	ccd 3	ccd 5	ccd 6	ccd 7	ccd 8
level 1 events	109112	100930	170817	105001	140396	139005	grade 0 events	3929	4074	6403	3962	5013	9942
rejected events	98016	89597	89737	92700	80505	103453		3%	4%	3%	3%	3%	7%
rejected %	89%	88%	52%	88%	57%	74%	grade 1 events	57	51	393	47	146	89
								0%	0%	0%	0%	0%	0%
							grade 2 events	2676	2363	24746	2889	12594	8677
								2%	2%	14%	2%	8%	6%
							grade 3 events	1177	1247	2288	1199	4524	3530
								1%	1%	1%	1%	3%	2%
							grade 4 events	1115	1249	2224	1160	4402	3264
								1%	1%	1%	1%	3%	2%
							grade 5 events	4308	5358	11298	5139	13517	7560
								3%	5%	6%	4%	9%	5%
							grade 6 events	2199	2403	45444	3092	33375	10143
								2%	2%	26%	2%	23%	7%
							grade 7 events	93651	84185	78021	87513	66825	95800
								85%	83%	45%	83%	47%	68%

2.2 Compared Parameters

Parameter	Planned	Actual	Parameter	Planned	Actual
Instrument	ACIS	ACIS	Obspar format version number	7	7
Detector	ACIS-235678	ACIS-235678	Obspar file type	PREDICTED	ACTUAL
Grating	NONE	NONE	Obspar update status	NONE	UPDATED
Data mode	VFAINT	VFAINT	CCD I0 on	N	N
Observation mode	POINTING	POINTING	CCD I1 on	N	N
[deg] Pointing RA	251.197681	251.2121037335966	CCD I2 on	O1	Y
[deg] Pointing Dec	57.604638	57.57832096177413	CCD I3 on	O2	Y
[deg] Pointing Roll	255.494543	255.638999222177	CCD S0 on	N	N
[mm] SIM focus pos	-0.684267	-0.6828225247311905	CCD S1 on	Y	Y
[mm] SIM defocus	0	0.001444936568705701	CCD S2 on	Y	Y
[mm] SIM translation stage pos	-190.132523	-190.1425803651734	CCD S3 on	Y	Y
[mm] SIM translation stage offset	0	0.01005778216563158	CCD S4 on	Y	Y
[s] Observation start time (MET)	556666990.184000	556665840.33494	CCD S5 on	N	N
Observation start date	2015-08-22T21:42:02	2015-08-22T21:24:00	Number of optional ACIS chips dropped	0	0
[s] Observation end time (MET)	556686990.184000	556688478.99872	On-chip summing requested	N	N
Observation end date	2015-08-23T03:15:22	2015-08-23T03:41:18	Subarray requested	NONE	NONE
Read mode	TIMED	TIMED	Alternating exposures requested	N	N
			[s] Primary exposure time	0.000000	3.2

2.3 Aspect



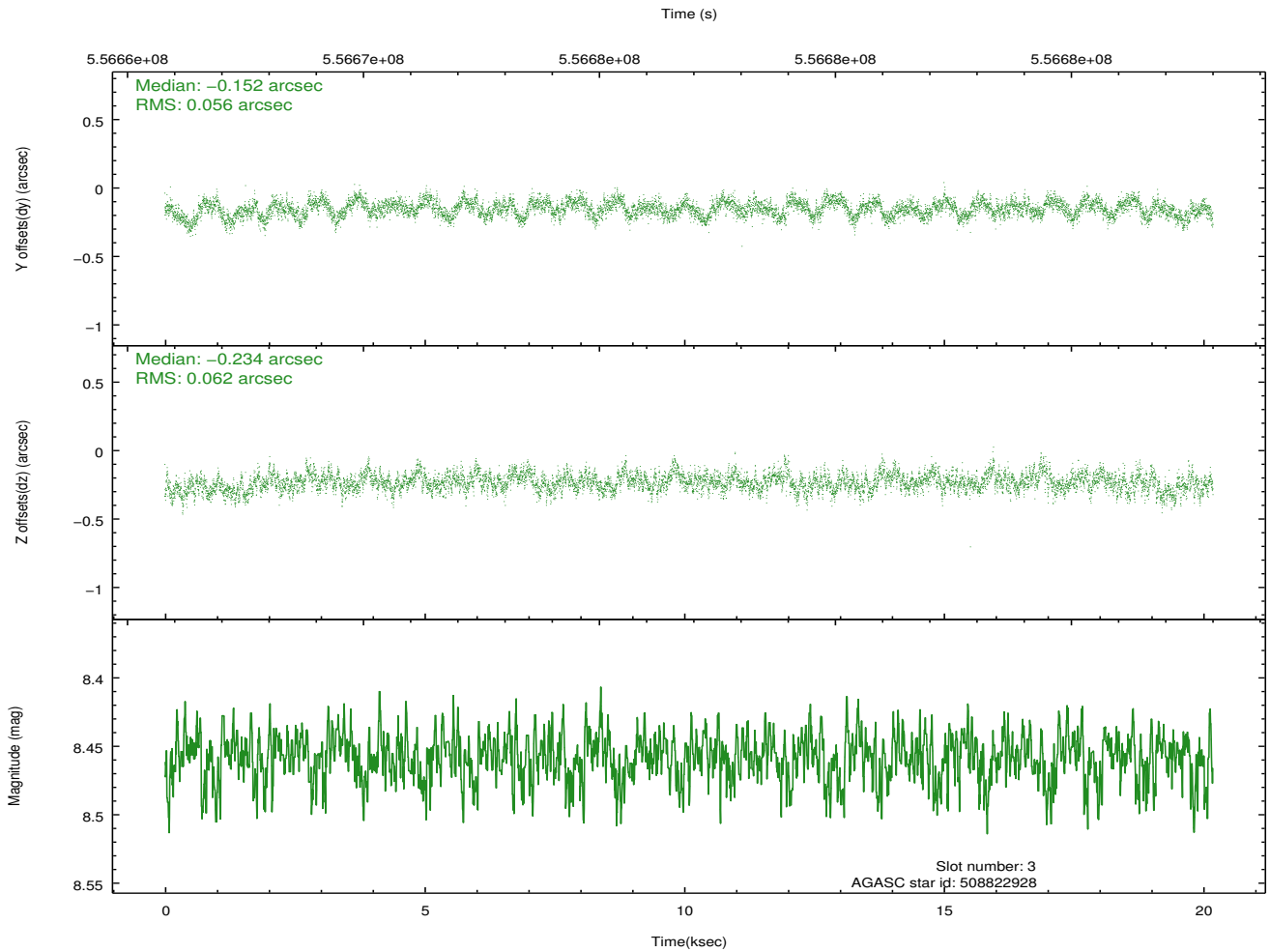
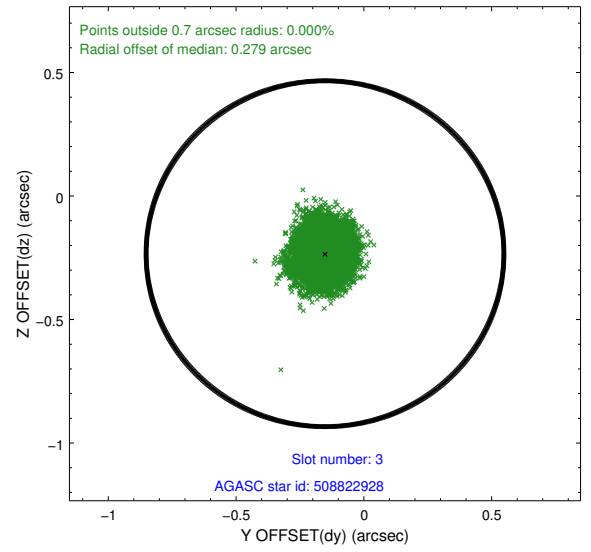
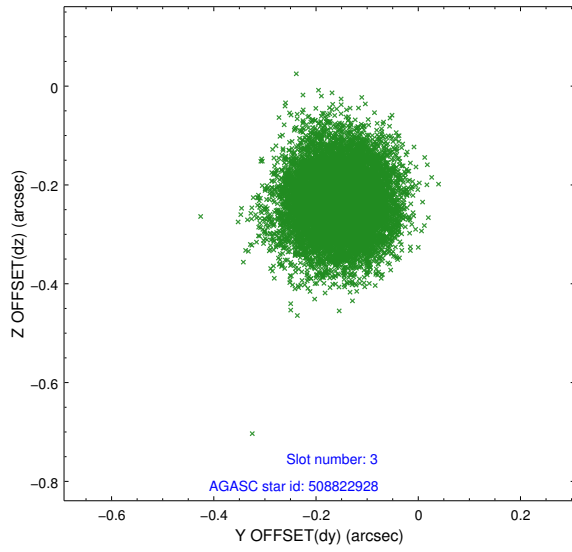


Slot Statistics

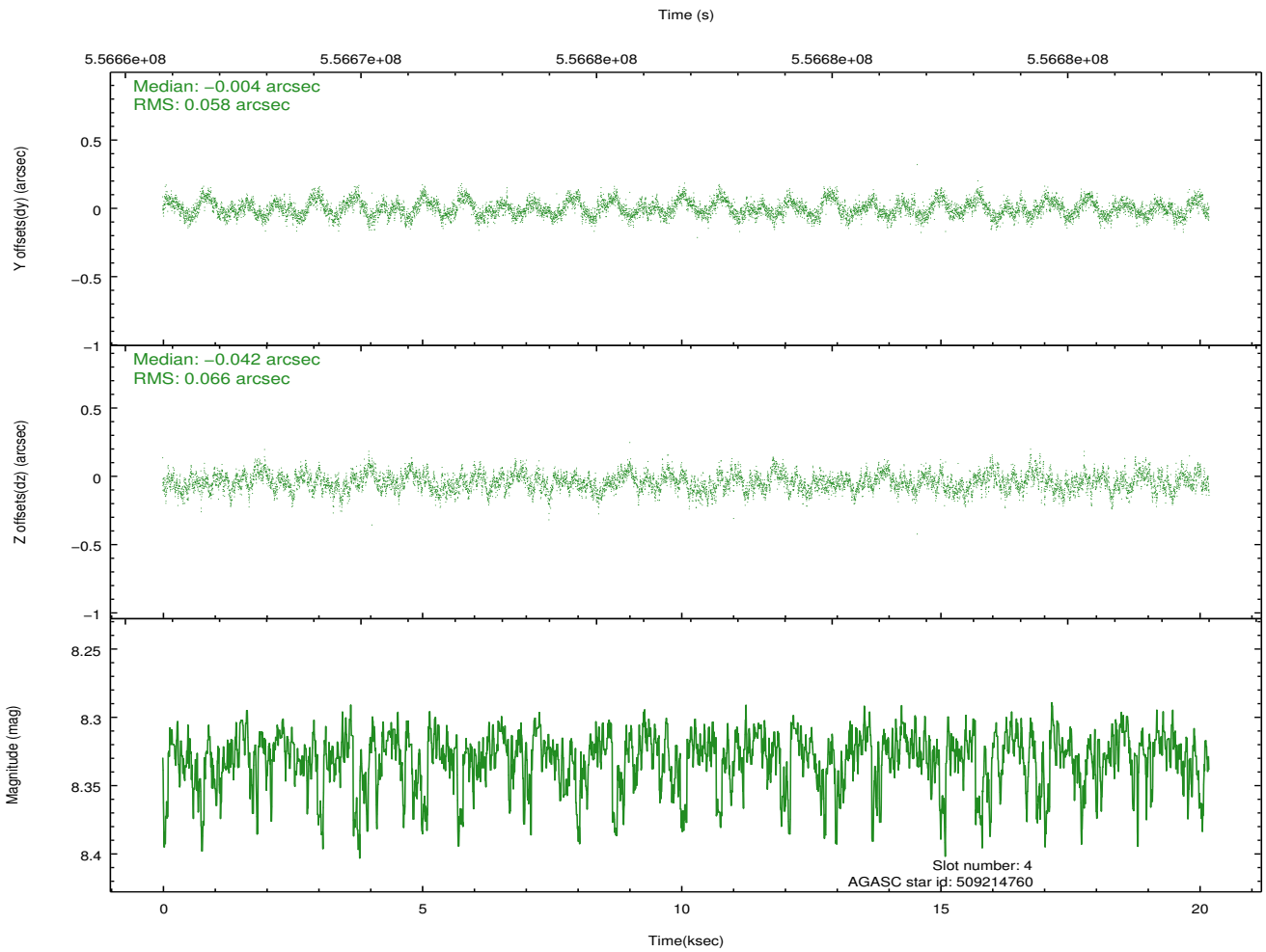
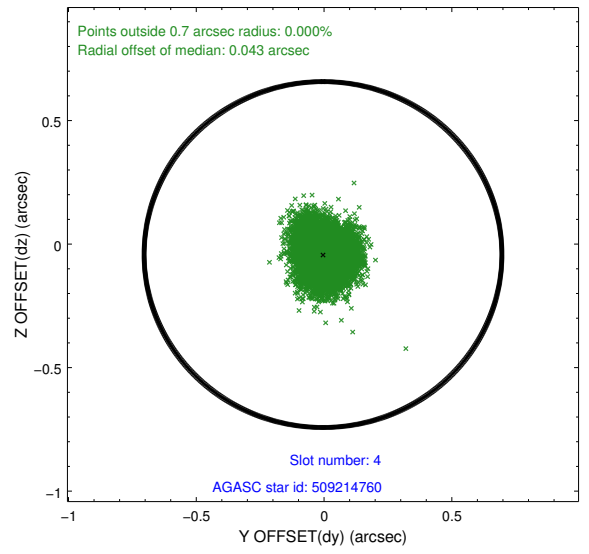
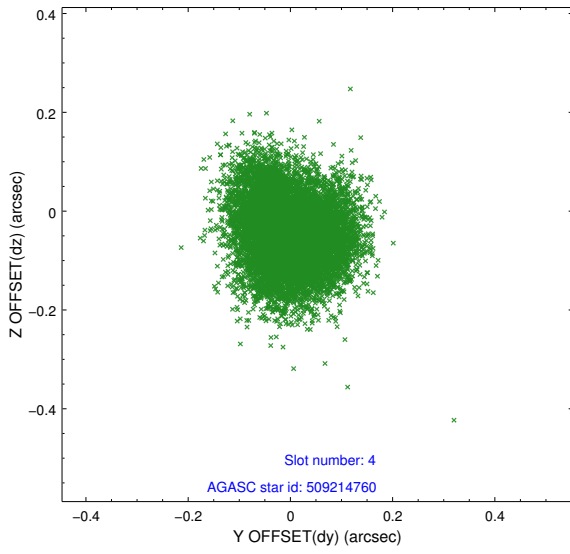
slot	status	used	id	mag	n_pts	med_dy	med_dz	dr1	dr2	ra	dec	mean_y	mean_z
0	FID		ACIS-S-2	7.11	4925	-0.077	-0.048	0.012	0.021	0.000000	0.000000	-765.38	-1736.42
1	FID		ACIS-S-4	7.21	4925	0.266	0.051	0.010	0.018	0.000000	0.000000	2148.12	172.02
2	FID		ACIS-S-5	7.24	4925	-0.219	0.006	0.015	0.023	0.000000	0.000000	-1818.16	165.79
3	GUIDE	used	508822928	8.46	9847	-0.152	-0.234	0.089	0.143	251.922984	56.892498	2116.95	2021.50
4	GUIDE	used	509214760	8.33	9842	-0.004	-0.042	0.094	0.150	250.589992	57.556199	458.55	-1093.22
5	GUIDE	used	509220344	9.52	9839	0.218	-0.070	0.174	0.271	250.285455	58.089133	-1264.19	-2120.21
6	GUIDE	used	509223192	7.70	9848	-0.052	0.186	0.068	0.109	251.320493	58.085113	-1732.92	-206.72
7	GUIDE	used	509228136	9.24	9838	-0.009	0.155	0.134	0.215	249.958671	57.735608	120.00	-2427.79

2.4 Star Slots

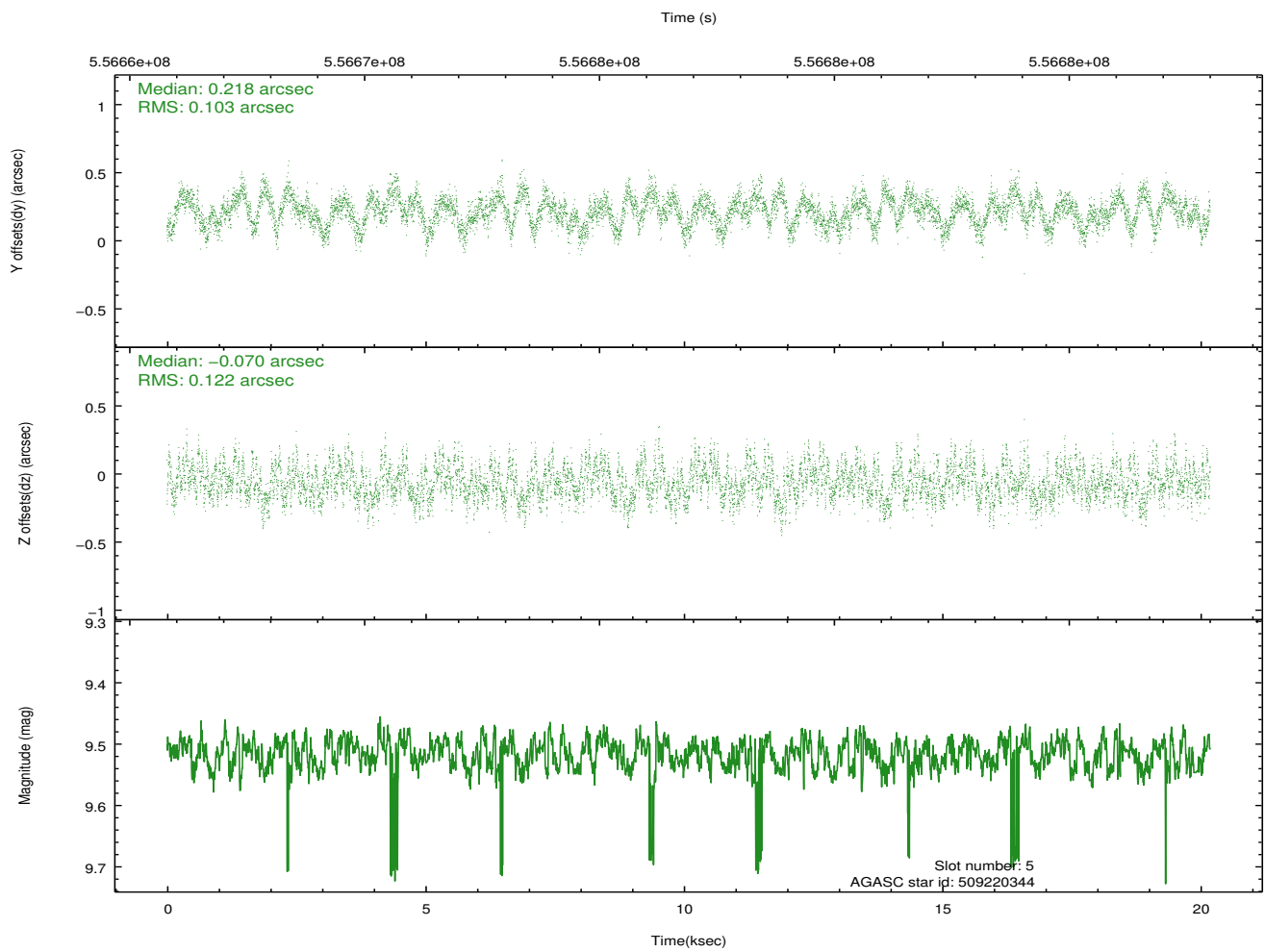
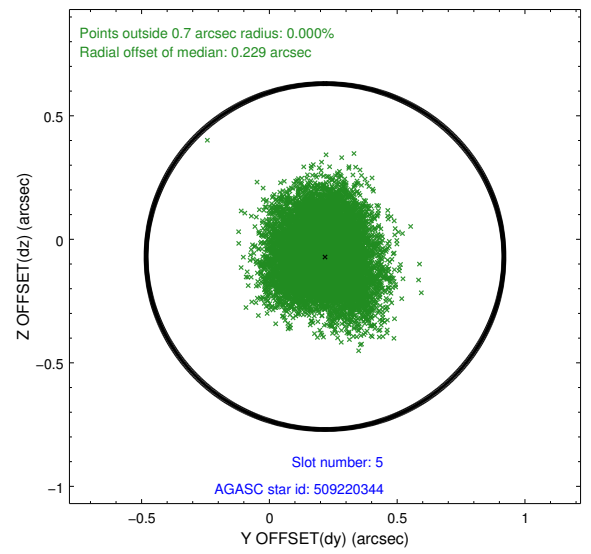
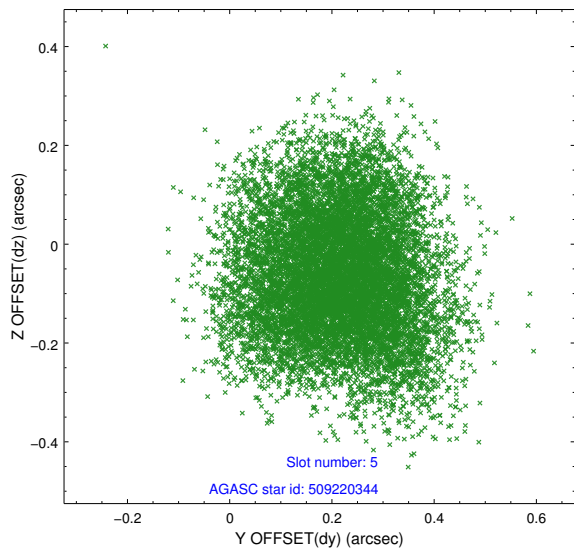
2.4.1 Slot 3



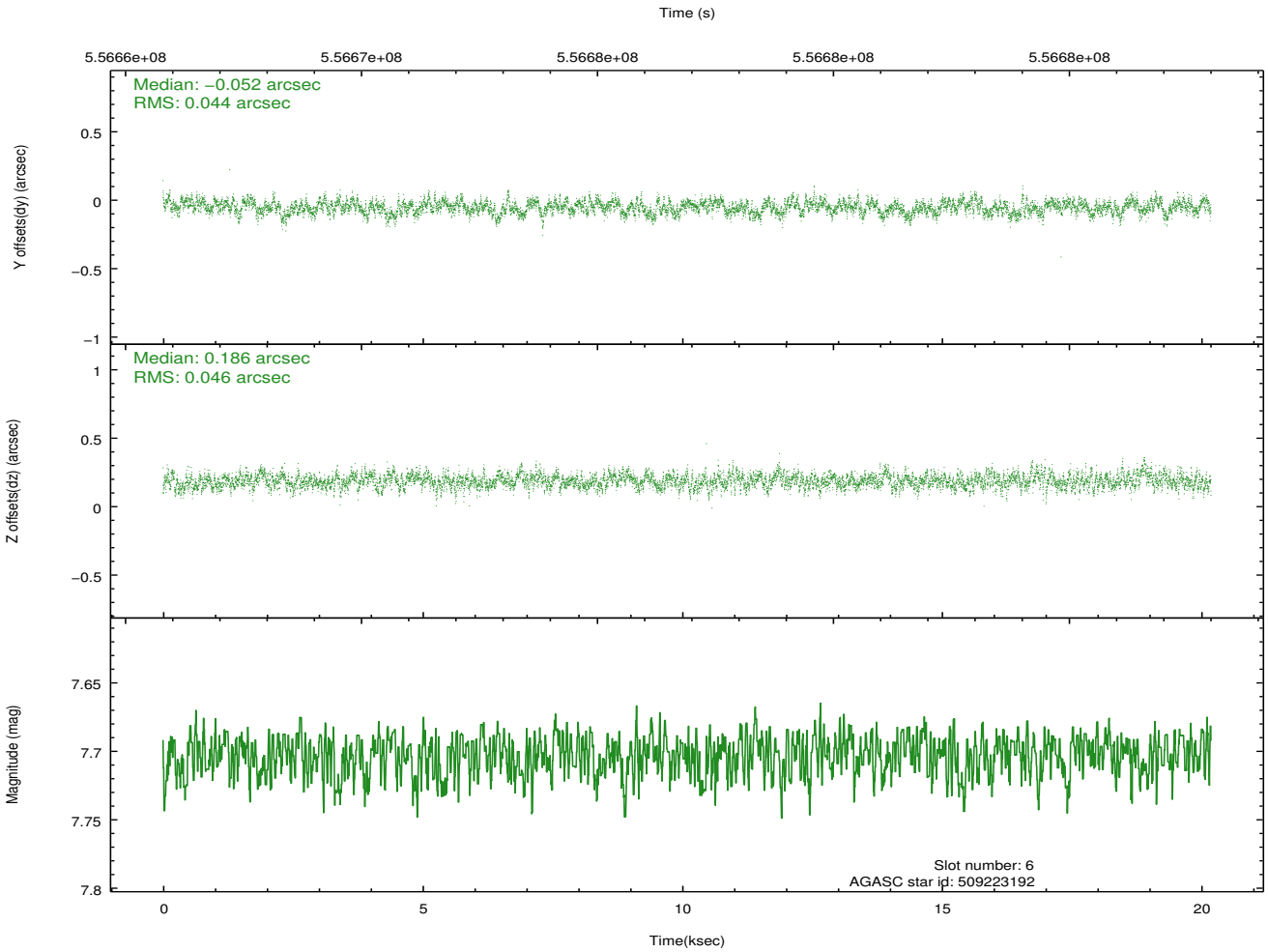
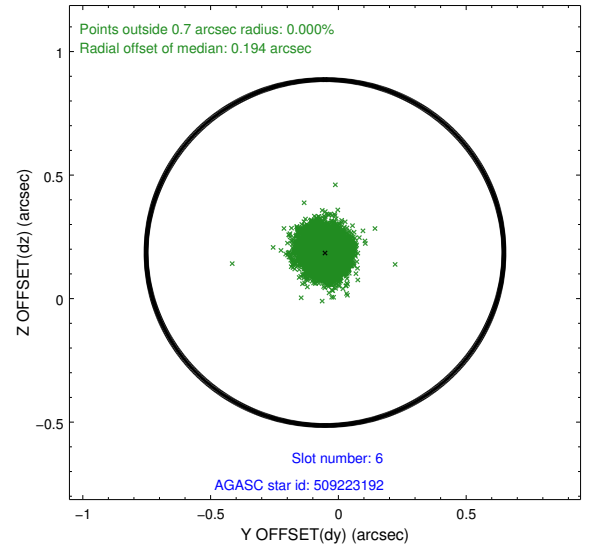
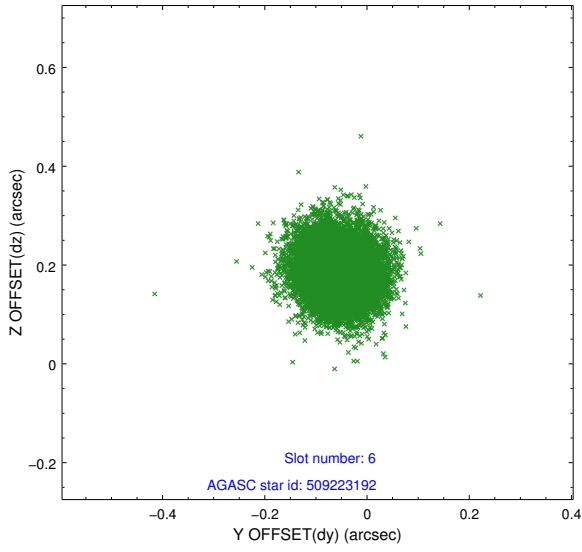
2.4.2 Slot 4



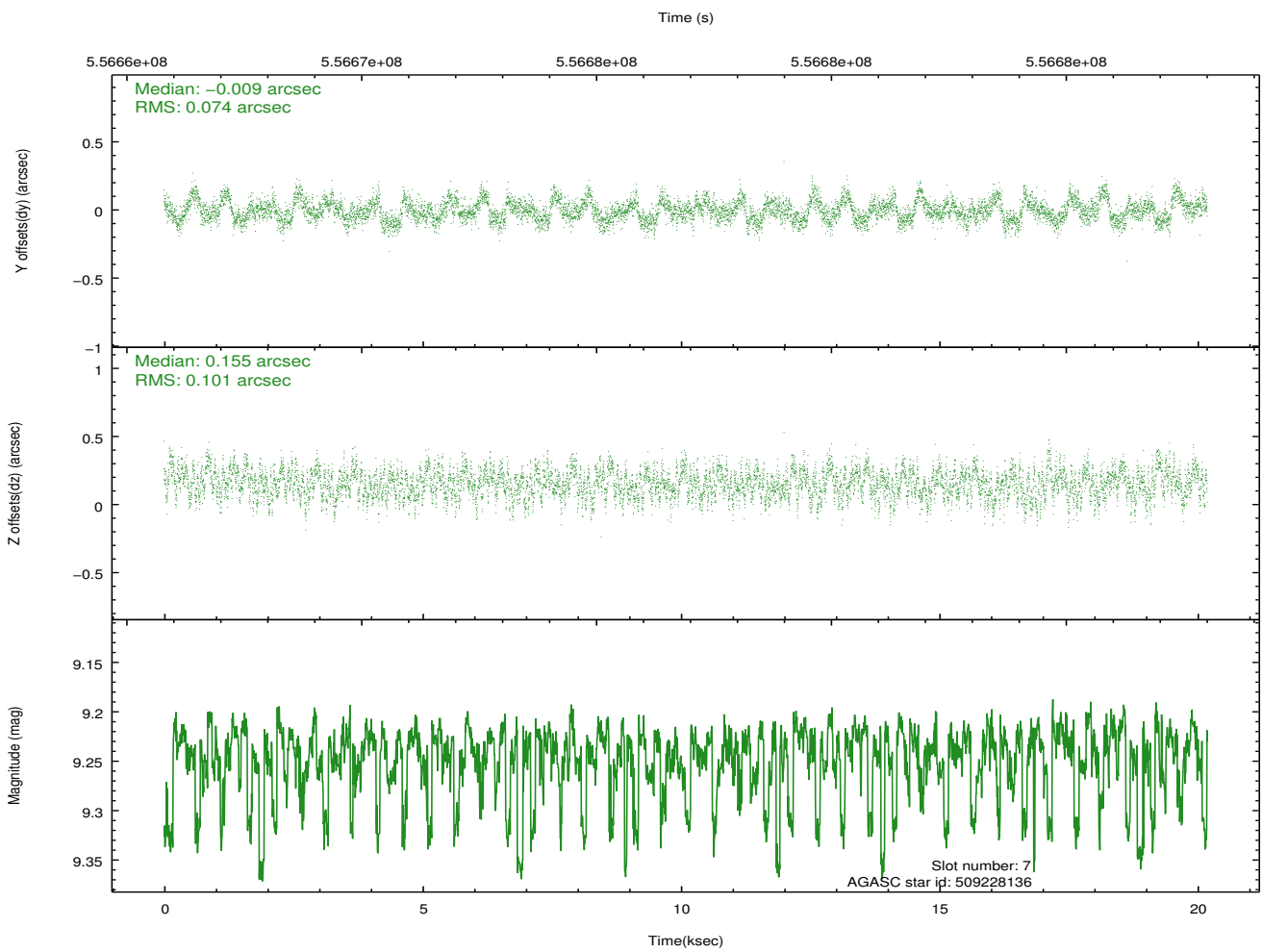
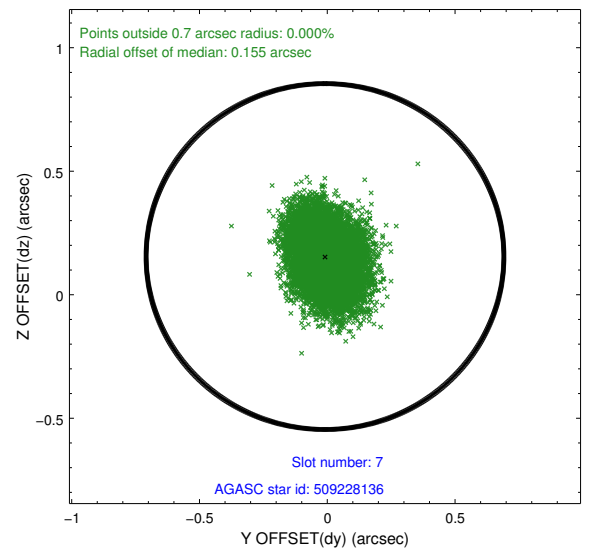
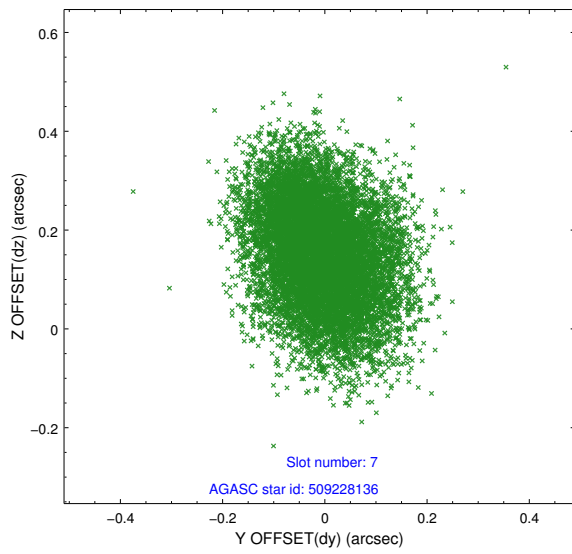
2.4.3 Slot 5



2.4.4 Slot 6

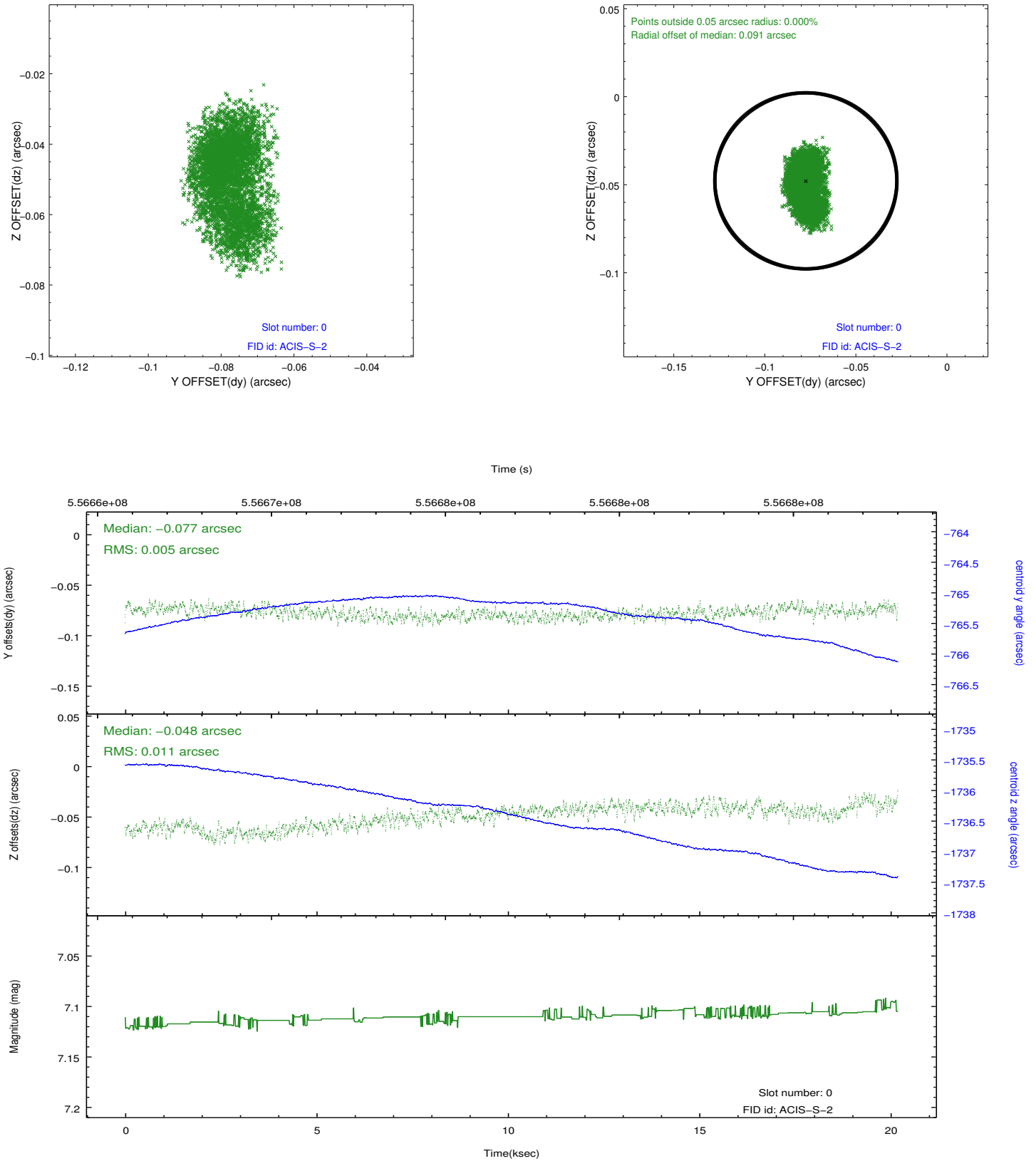


2.4.5 Slot 7

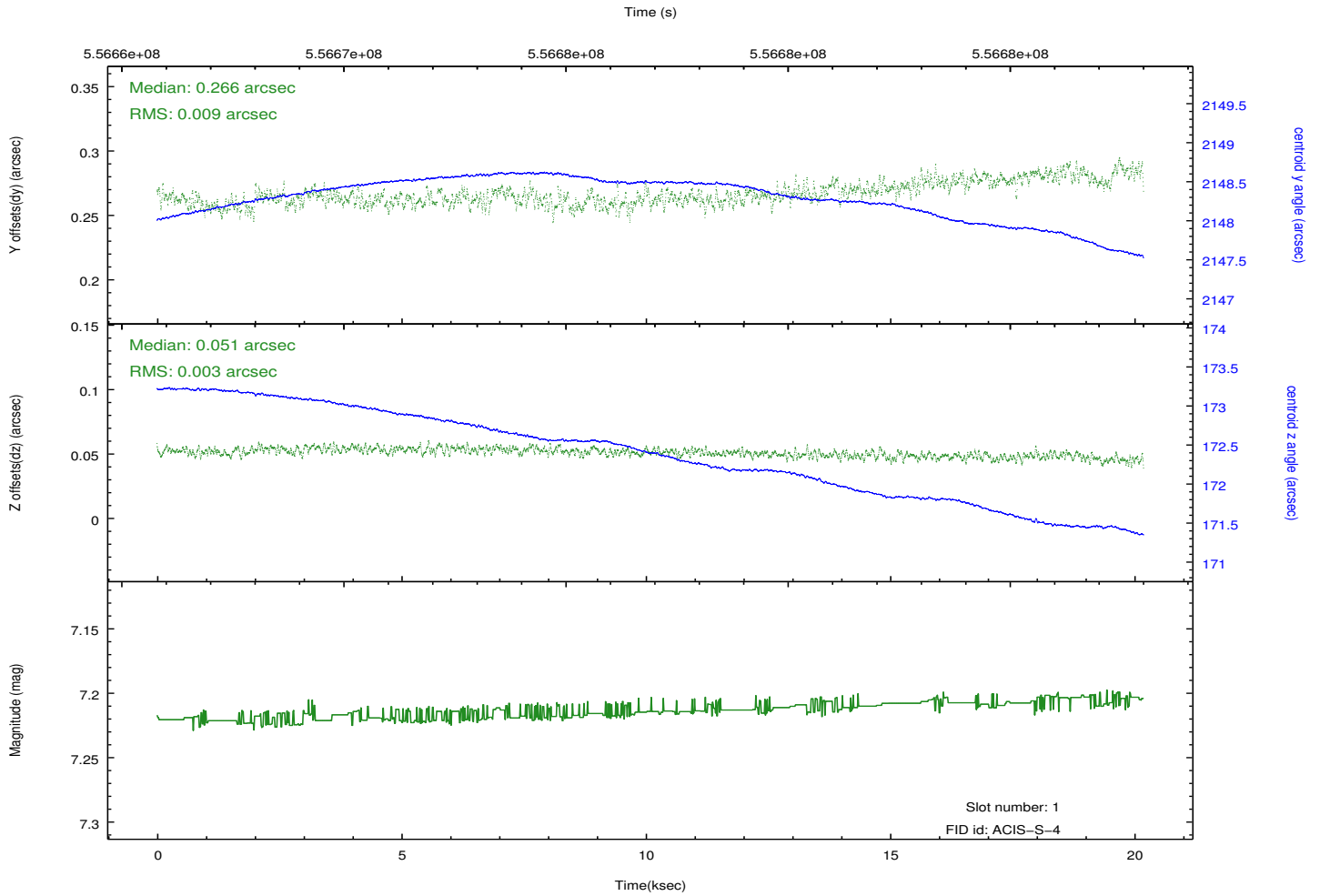
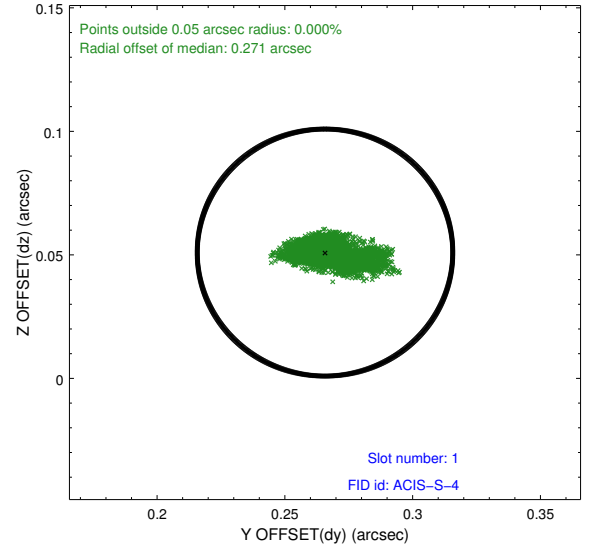
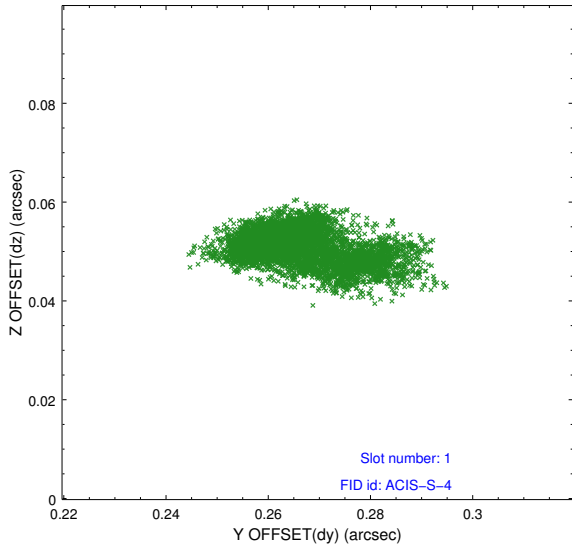


2.5 FID Slots

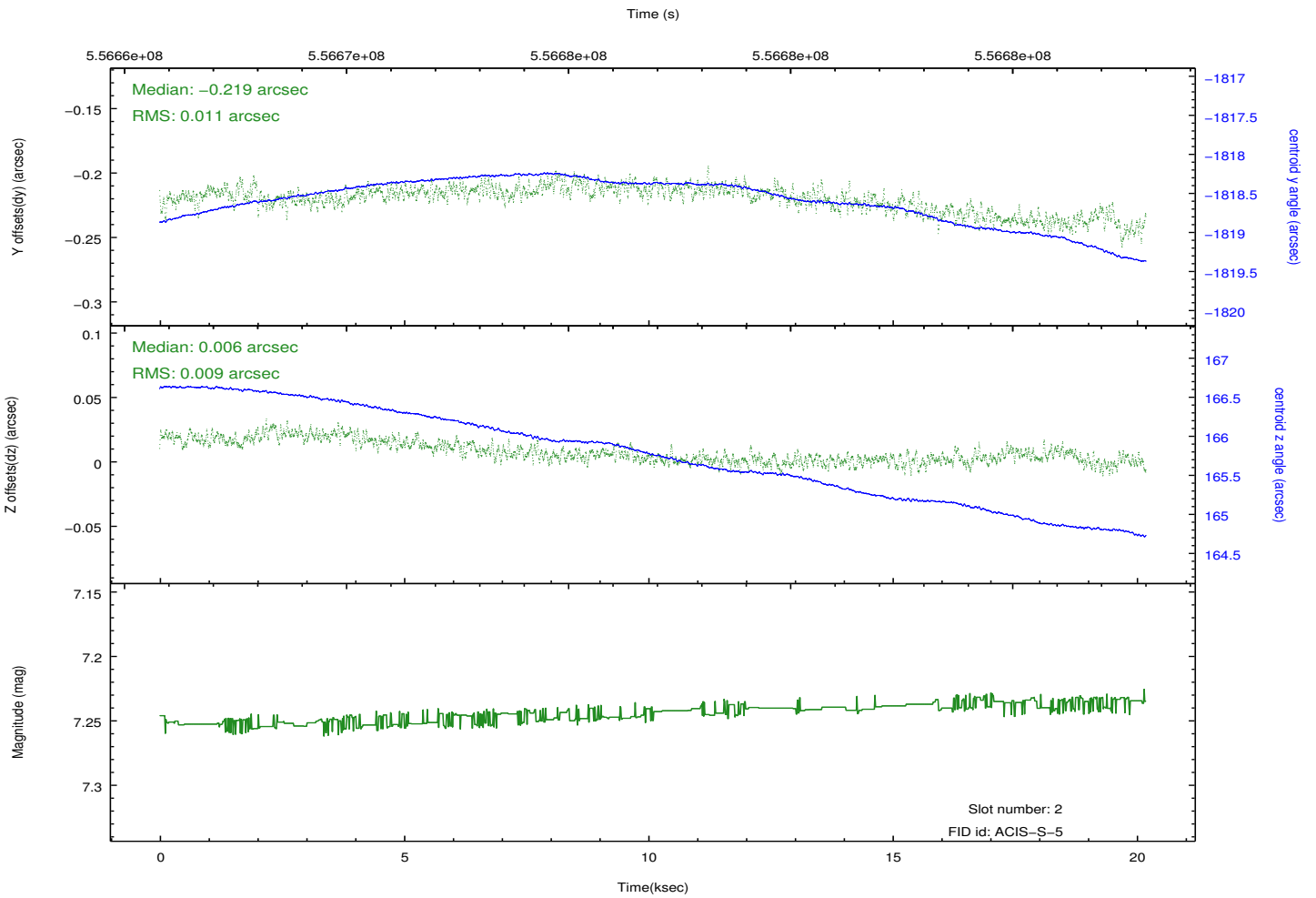
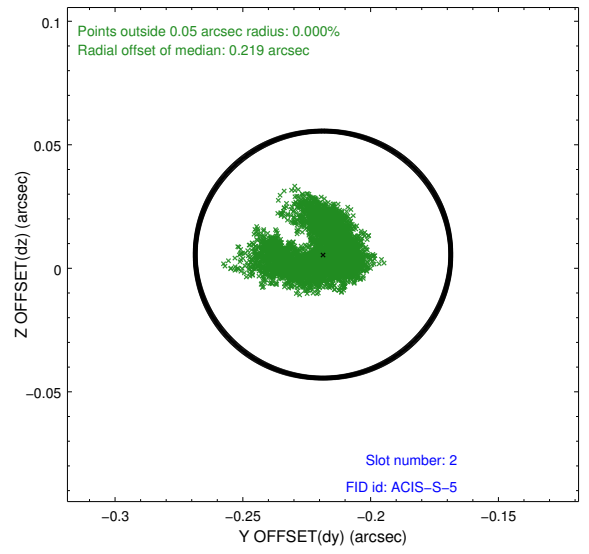
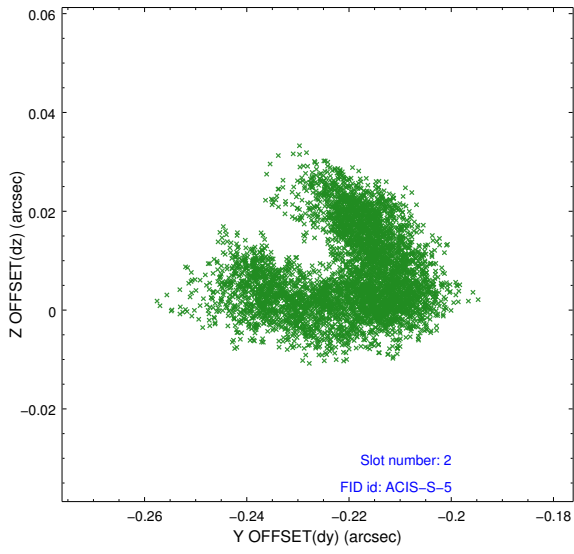
2.5.1 Slot 0



2.5.2 Slot 1



2.5.3 Slot 2



A Summary

A.1 Status

V&V Scientist	Joy Nichols
V&V Date (YYYY-MM-DD)	2015.08.25
V&V Edition	1
V&V Disposition and Status	OK
V&V Charge Time	19.955200297356

A.2 Comments